

From outcrop scanlines to discrete fracture networks, an integrative workflow

Lepillier, Baptiste; Bruna, Pierre-Olivier; Bruhn, David; Bastesen, Eivind; Daniilidis, Alexandros; Garcia, Oscar; Torabi, Anita; Wheeler, Walter

DOI

[10.1016/j.jsg.2020.103992](https://doi.org/10.1016/j.jsg.2020.103992)

Publication date

2020

Document Version

Final published version

Published in

Journal of Structural Geology

Citation (APA)

Lepillier, B., Bruna, P.-O., Bruhn, D., Bastesen, E., Daniilidis, A., Garcia, O., Torabi, A., & Wheeler, W. (2020). From outcrop scanlines to discrete fracture networks, an integrative workflow. *Journal of Structural Geology*, 133, Article 103992. <https://doi.org/10.1016/j.jsg.2020.103992>

Important note

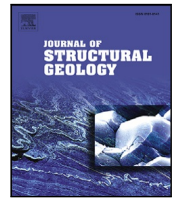
To cite this publication, please use the final published version (if applicable).
Please check the document version above.

Copyright

Other than for strictly personal use, it is not permitted to download, forward or distribute the text or part of it, without the consent of the author(s) and/or copyright holder(s), unless the work is under an open content license such as Creative Commons.

Takedown policy

Please contact us and provide details if you believe this document breaches copyrights.
We will remove access to the work immediately and investigate your claim.



From outcrop scanlines to discrete fracture networks, an integrative workflow

Baptiste Lepillier^{a,*}, Pierre-Olivier Bruna^a, David Bruhn^{a,b}, Eivind Bastesen^c, Alexandros Daniilidis^a, Óscar Garcia^e, Anita Torabi^{c,d}, Walter Wheeler^c

^a Delft University of Technology, Stevinweg 1, Delft 2628CN, The Netherlands

^b GFZ German Research Centre for Geosciences, Telegrafenberg, Potsdam, Germany

^c NORCE Norwegian Research Centre, PB 22 Nygårdstangen, 5838 Bergen, Norway

^d UiO University of Oslo, Postboks 1047 Blindern, 0316 Oslo, Norway¹

^e Instituto Politécnico Nacional ESIA Ticoman, Mexico City, Mexico

ARTICLE INFO

Keywords:

EGS
Fracture
Scanline
DFN
Python
MPS

ABSTRACT

Understanding fractures and fracture networks is essential for the investigation and use of subsurface reservoirs. The aim is to predict the fractures and the fracture network when there is no direct access to subsurface images available. This article presents a universal workflow to numerically compute a discrete fracture network by combining the 1D scanline survey method, processed with the newly written SkaPy script, together with the multiple point statistic method (MPS). This workflow is applied to a potential geothermal site in Mexico called Acozulco. We use Las Minas outcrops and quarries as surface analogues for the Acozulco reservoir, as Las Minas and Acozulco are both formed by the influence of a plutonic intrusion into the Jurassic–Cretaceous carbonate sequence of the Sierra Madre Oriental in the Trans-Mexican volcanic belt (TMVB). The intrusion is associated with contact metamorphism and metasomatic phenomena, providing the basis for the mining activities at Las Minas. The results obtained using this workflow demonstrate the feasibility of the approach, which presents a solution combining the efficiency of data processing and an interpretation-driven approach to build realistic discrete fracture networks. This workflow can be used in the process of estimating the permeability of a fracture controlled reservoir, with using only scanline surveys data as input. This is essential in the process of evaluating the feasibility to develop an enhanced geothermal system.

1. Introduction

The use of the subsurface and the exploitation of subsurface resources require prior knowledge of fluid flow through fracture networks, particularly in low permeability rocks. For nuclear waste disposal, for the enhancement of hydrocarbon recovery from a field, or the development of an enhanced geothermal system (EGS), it is fundamental to constrain the fractures and the fracture network. The question we address here is how to predict the fractures and the fracture network of an area when there is no large scale information available, for example from seismic data or aerial images (Unmanned Aerial Vehicle - UAV, or drone). To overcome this potential problem, we developed a workflow to numerically compute a discrete fracture network based on the combination of the scanline survey method performed at single outcrops, processed with the newly written SkaPy

script, together with the Multiple Point Statistic method (MPS) (e.g. Liu et al., 2002; Chugunova et al., 2017) proposed by (Bruna et al., 2019). This workflow is then applied to the case study of the Acozulco EGS test site in Mexico.

The development of EGS requires stimulation treatments of the reservoir to enable or increase the flow rate of the geothermal fluid for the extraction of heat from high temperature and initially low permeability rocks, (e.g. Gallup, 2009). In EGS, the production and injection wells are hydraulically connected by increasing the rock permeability (Tester et al., 2006), which for a fractured tight reservoir corresponds to stimulating the pre-existing natural fractures and using them as fluid pathways and heat exchangers.

Reservoir permeability is measured at two scales: the matrix rock permeability, referring to the natural pore space of the rock; and the

* Corresponding author.

E-mail addresses: b.p.lepillier@tudelft.nl (B. Lepillier), P.B.R.Bruna@tudelft.nl (P.-O. Bruna), D.F.Bruhn@tudelft.nl (D. Bruhn), Eivind.bastesen@uib.no (E. Bastesen), A.Daniilidis@tudelft.nl (A. Daniilidis), oscarghdez85@gmail.com (Ó. Garcia), anita.torabi@geo.uio.no (A. Torabi), wawh@norceresearch.no (W. Wheeler).

¹ Now at.

<https://doi.org/10.1016/j.jsg.2020.103992>

Received 24 July 2019; Received in revised form 14 January 2020; Accepted 14 January 2020

Available online 16 January 2020

0191-8141/© 2020 The Authors. Published by Elsevier Ltd. This is an open access article under the CC BY license (<http://creativecommons.org/licenses/by/4.0/>).

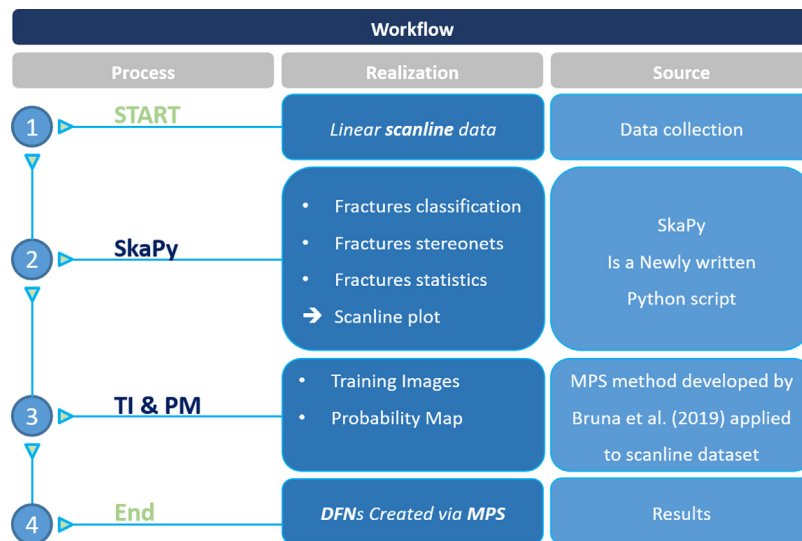


Fig. 1. Workflow chart, from scanline to DFN.

Index	m_in	m_out	Dir.	Surf_Dir	Surf_Dip	Type	Str.	F_Az	F_Dip	F_Quadrant	F_F	Q
0	0	1	N	160	54	fracture	N	160	82	E	F5	1
1	0	1	N	160	54	fracture	N	150	89	E	F5	1
2	0	1	N	160	54	fracture	N	150	80	W	F5	1
3	0	1	N	160	54	fracture	N	70	85	S	F1	5
4	0	1	N	160	54	fracture	N	28	60	E	F3	2
5	0	1	N	160	54	fracture	N	93	30	N	F6	8
6	1	2	N	160	67	fracture	N	172	85	W	F5	4
174	2.95	5.5	N	20	90	fracture	N	140	10	W	F2	3
175	2.95	5.5	N	20	90	fracture	N	142	50	SW	F2	2
176	2.95	5.5	N	20	90	fracture	N	95	60	N	F4	4
177	2.95	5.5	N	20	90	fracture	N	280	15	N	F6	1
599	157	158	N	170	70	fracture	N	216	55	NW	F3	2
600	157	158	N	170	70	fracture	N	48	63	SW	F1	1
601	158	159	N	170	70	fracture	N	208	88	NW	F3	7
602	159	160	N	107	70	fracture	N	190	59	W	F3	7
603	160	161	N	112	70	fracture	N	25	34	SW	F3	15
604	160	161	N	112	70	fault	N	180	64	W	F5	1
605	161	162	N	112	70	fault	N	347	46	E	F5	1
606	161	162	N	112	70	fracture	N	39	35	SW	F3	15

Fig. 2. Example of a Scanline input dataset; Description of the headers: (1) Index: single index to reference all rows of the dataset; (2) m in, m out: these stands for “meter in and out” as to describe the interval treated in this row; (3) Dir, Surf Dir, Surf Dip : Survey orientation (‘Dir’ = Direction of the outcrop relative to the North ‘N’) and slope of the outcrop; (4) Type: stands for the type of structural feature; (5) Str, F Az, F Dip, F Quadrant: (‘Str’ = Structural measurement direction relative to the North ‘N’) are used to fill information relative to the structural feature, such as strike, dip, quadrant towards which it dips; (6) F F: is the “a priori” structural set; and (7) Q: stands for the number of these features, when a same feature is being repeated within the same interval.

reservoir bulk permeability, which includes faults and fractures and the pore network of the rock.

In nature, fractures are organized as networks, from microscopic to regional scale (e.g. Gillespie et al., 1993; Zhang et al., 2016). These networks generally present a regular arrangement (i.e. orthogonal networks, conjugated network; Healy et al. (2015)) which may vary in terms of orientation, size, density and topology (Bruna et al., 2019) at various scale (from metre scale to reservoir scale). Fracture network geometries vary spatially due to local variation of the stress field and over time. Hence, it is difficult to predict the geometry of these networks. Understanding fracture network starts with the characterization of the fracture geometry. The International Society for Rock Mechanics (ISRM) proposes a method for this fracture characterization (ISRM, 1978). The key elements used to describe fractures are:

- the orientation (strike and dip);
- the length (also called fracture “trace”, or “extent”);
- the connectivity (also called “abutment” or “node” as for example in term of modelling (Peacock et al., 2016));
- the aperture (“mechanical aperture” when measured at the outcrop);

- the filling (cement or clay filling the fracture void);
- and finally, the shape, commonly described with a joint roughness coefficient (JRC) (Barton and Choubey, 1977; Tse and Cruden, 1979; Li and Zhang, 2015).

Because the reservoir is not accessible, these fracture networks cannot be measured directly. Therefore, reservoir properties can best be studied at suitable analogue outcrops (Barbier et al., 2012). Analogues are rock sections, made of comparable composition and geometry, cropping out at the surface. Therefore, outcrop analogues can be used to measure the fracture geometries. As explained in Li et al. (2018), an analogue can always have its own local variations from the subsurface reservoir. For this reason, the surface analogue is used as the base case, which can evolve as new information becomes available, to better represent reservoir geometries.

When working on large-scale outcrops, a common method is to use aerial images of wide, well-exposed surfaces, where fracture networks can be explicitly characterized. Unfortunately, there is no suitable outcrop available to be imaged near Acoculco. For that reason, we used another method, based on simple and systematic measurements. The

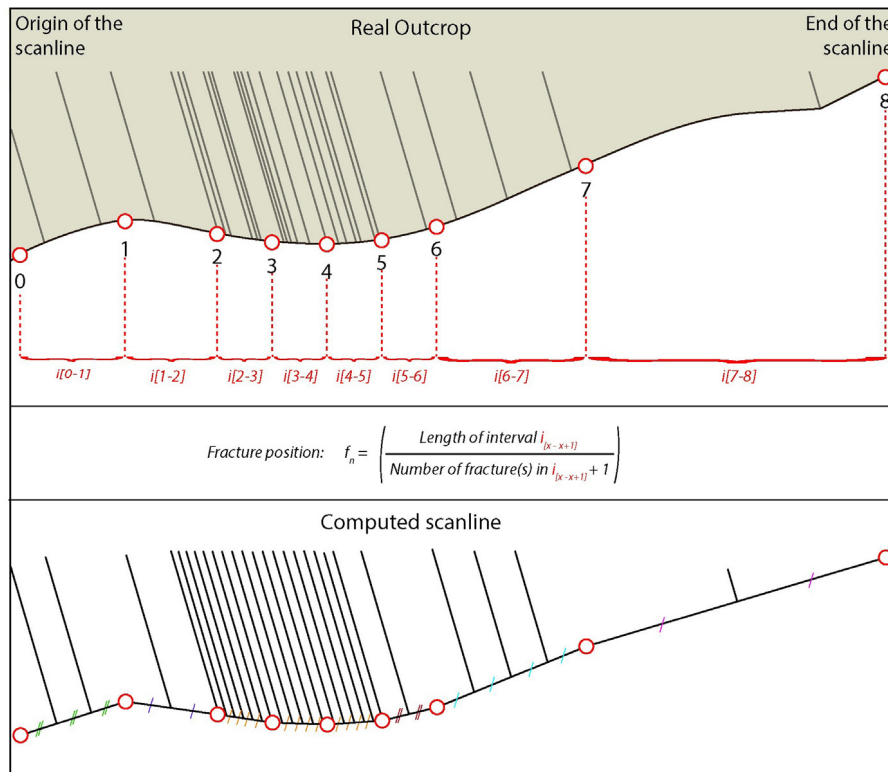


Fig. 3. Illustration of the method used to build the scanline in SkaPy: Upper part: shows the simplified fractures (as grey straight lines) in the real outcrop (brown background). Red and white dots with numbering from 0 to 8 represent the stations. These stations delimit intervals (here marked in red); Middle part: gives the expression used to calculate fracture positioning from the dataset to computed scanline; Lower part: shows the computed scanline. Small coloured oblique lineaments in between the fractures describe equal spacing.

scanline survey method is a common approach to obtain the statistics required to predict the fracture geometry of the network at the scale of a geothermal field. The method consists of reporting, measuring and describing all fractures visible at the surface of the rock and intersecting with the measuring tape (ISRM, 1978; Lavenu et al., 2014). The dataset, created from the scanline survey, can then be used for computing a global discrete fracture network (DFN).

A Discrete Fracture Network (DFN) model is a mathematical representation of fracture distribution in space and fracture characteristics. As explained in Lei et al. (2017), the DFN concept is broad, since the geometry of the DFN depends on the need for which it is created, or on the way the fracture characteristics are obtained. For example, a DFN can be generated by digitizing fractures on large scale imagery or it can also be obtained from samples at a laboratory scale. In the context of this article, we compute the DFNs numerically from scanline datasets. We use the scanline datasets as input to extrapolate to a much larger geographical domain. We assume that the fracture parameters measured at the outcrop are representative of the geometry of the network in its near neighbourhood. The extrapolation far from this point is unknown and has been taken into consideration by means of gradual transitions from one sampling area to the other. Common approaches as used in standard software tools would achieve this using a stochastic method, which honours the scanline input data and returns statistically accurate results. In this workflow, we extrapolate the scanline surveys with the multiple point statistics (MPS) method, which in addition to being statistically accurate preserves the geological patterns and therefore preserves the geometry of the fractures.

This article presents a new workflow using the specially developed Python^{TM2} based SkaPy script, which computes statistics on multiple

scanline surveys, classifies the fractures, and represents them in a georeferenced system. This representation is further analysed to provide the input for the calculation of the DFN by the MPS method proposed by Bruna et al. (2018, 2019). In this article, Bruna et al. (2019) analyses applicability of the MPS method to reproduce a known fracture network (i.e. manually interpreted from an outcrop), preserving the geometrical characteristics of the fractures. This workflow combines the efficiency of data processing and an interpretation-driven approach. The script is freely available on GitHubTM.

We apply the present workflow to the Acoculco geothermal field, within the framework of the GEMex project (e.g. Jolie et al., 2018), where two exploratory wells reached high temperatures (300 °C) at reasonable depth (2 km). Unfortunately, the wells did not access any productive geothermal layers. For this reason, Acoculco could eventually be developed as an EGS. Thus, the objective of this paper is to provide a characterization of the existing fracture network prior to stimulation.

2. Background, existing methods

2.1. Existing methods for the scanline survey

The linear scanline survey method has been widely described (ISRM, 1978; Lavenu et al., 2014; Watkins et al., 2015). The principle of this method is based on laying a measuring tape along the outcrop and reporting every fracture crossing this tape, describing the fracture characteristics such as strike, dip, length, connectivity, aperture, filling and shape. Even though the method is known for potentially biasing the fracture representativity (Terzaghi, 1965), it is still broadly used. Several studies have discussed the fracture length and the fracture representativity in the scanline survey (Priest and Hudson, 1981). As more recently explained in Zeeb et al. (2013), “[the] probability of a fracture [to intersect] with [the] scanline is proportional to [its]

² Python Software Foundation (2019).

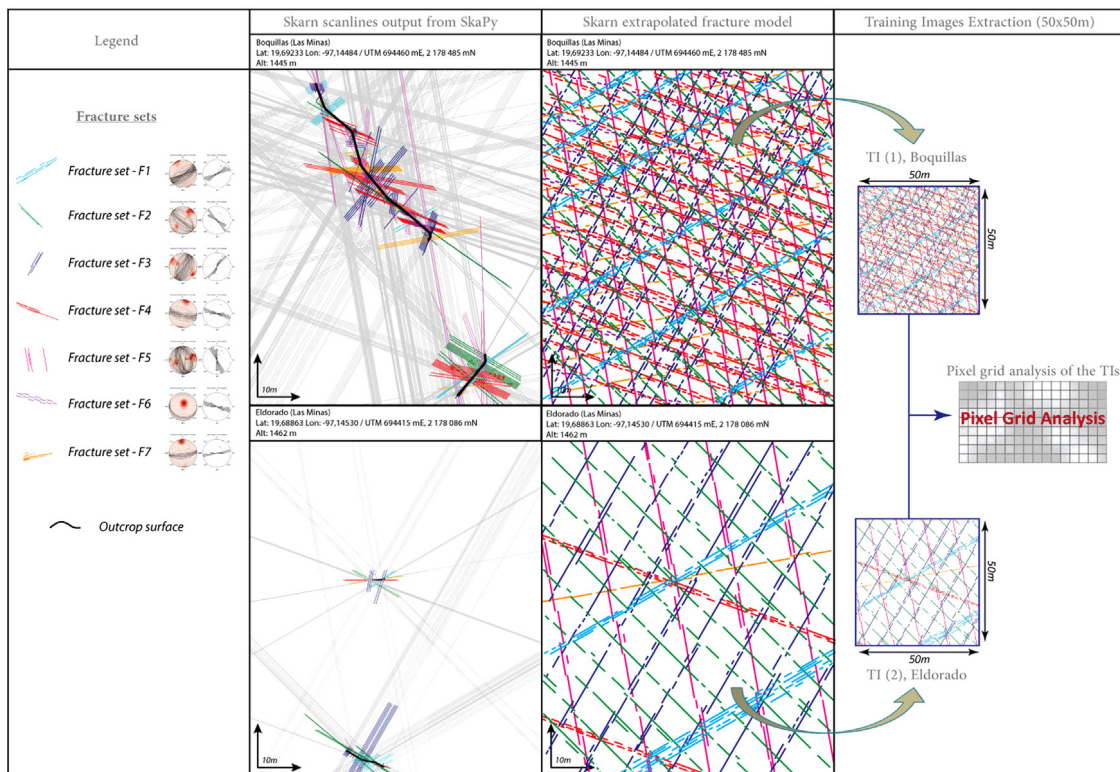


Fig. 4. From SkaPy output to Training Images creation.

length. Therefore, short fractures are underrepresented” (p. 13). This under-representation impacts the statistical distribution of the fracture lengths. The measured fracture lengths are also controlled by the outcrop dimensions. Nonetheless, the method remains a good tool thanks to its simplicity and reliability to give exhaustive characterization of the fractures. Some variations of this linear scanline survey exist as for example the circular window surveys proposed by Mauldon (1998), Mauldon et al. (2001) and a mixed method of transect linear scanlines and circular windows Watkins et al. (2015).

2.2. Existing scripts for scanline or fracture data processing

Markovaara-Koivisto and Laine (2012) published a MATLAB[®] script for scanline data processing. The script automates the dataset computation: it classifies the fractures into sets, provides statistics on the fractures, and builds a 2D or 3D visualization of the scanline. The advantage of their MATLAB[®] script is that it handles the shape of the fractures, comparable to the joint roughness coefficient (JRC), named “undulation” of the discontinuities. FraNEP is a script developed in Visual Basic[™], written by Zeeb et al. (2013). The FraNEP script automatically analyses the statistical properties of 2D fracture networks by applying the linear and circular scanlines methods. The script includes length and orientation corrections in the calculations and also analyses fractures as a network, calculating their spacing, intensity and length distributions. The script includes the fractures classification into sets and computes rose diagrams of the fractures. More recently, Healy et al. (2017) published a MATLAB[®] script under the name FracPaQ. This script is intended to be a “software-based toolbox” to quantify fracture patterns in 2D. Similarly to FraNEP, the FracPaQ toolbox is mainly implemented to process photography or interpreted imagery of fracture networks and to analyse the statistical distributions of the fracture properties. Among other results, the code estimates the bulk

permeability of the system studied. The strength of FracPaQ is that it can process a wide range of spatial scales.

None of these approaches combine a multiple scanline datasets analysis, classification of the fractures, and geographic representation. To transfer this information into a DFN, we needed to develop our own method. SkaPy is designed to fill this gap.

One advantage of scripting is to automate a workflow, which increases efficiency and reduces personal bias. This means, scripting also contributes to decreasing the risk of error. Another advantage is the possibility to analyse the statistical distributions of the fractures. Even more important is the possibility to run these statistics on multiple scanline surveys together. However, to compute any statistics on the fractures, it is fundamental to first separate the fractures into sets.

SkaPy has been written in the continuation of the Markovaara-Koivisto and Laine (2012) script, which processes scanline datasets. SkaPy is a flexible tool that handles surveys with constant or varying orientations. This allows surveys along curved outcrop surfaces. To compute the statistical analysis on fracture characteristics, SkaPy analyses not only one scanline dataset but processes multiple datasets. Therefore, it becomes easy to constrain the fracture characteristics over multiple outcrops. Then, as in the Markovaara-Koivisto and Laine (2012) script, SkaPy generates statistical plots, such as histograms, box-plots and stereonets. Because visualization is also important, SkaPy plots the scanline(s) in a geo-referenced system. A geo-referenced representation of the discretized fractures is the first step towards extrapolation to a DFN.

2.3. Existing methods for DFN computation

Many tools already exist and are still being developed to improve DFN generation. Commonly used programs and algorithms for this purpose include the Move[™] software from Midland Valley, and

³ The MathWorks Inc. (2019).

⁴ Midland Valley (2019).

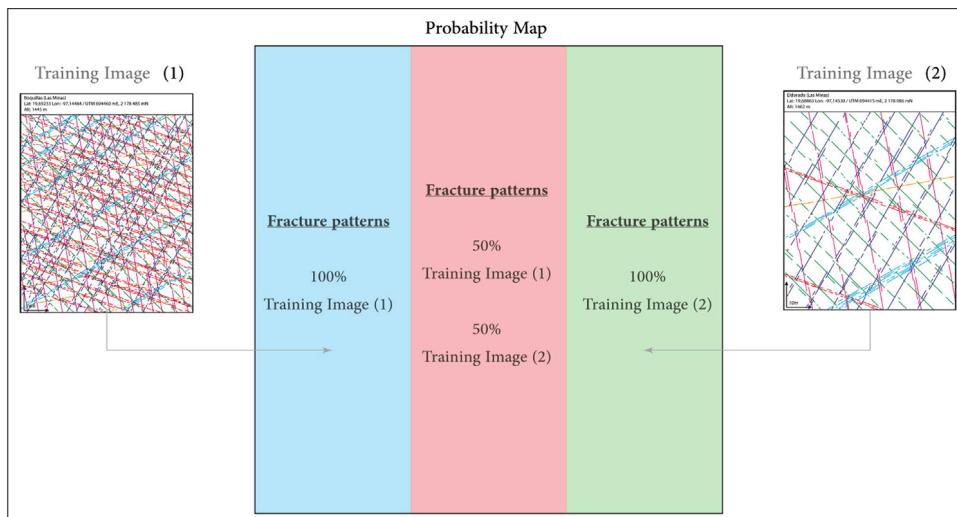


Fig. 5. Training images and Probabilistic map, as used in this study. Here Training Image (1) corresponds to the TI of Boquillas outcrop, and Training Image (2) corresponds to the TI of Eldorado outcrop, for the Skarn lithology.

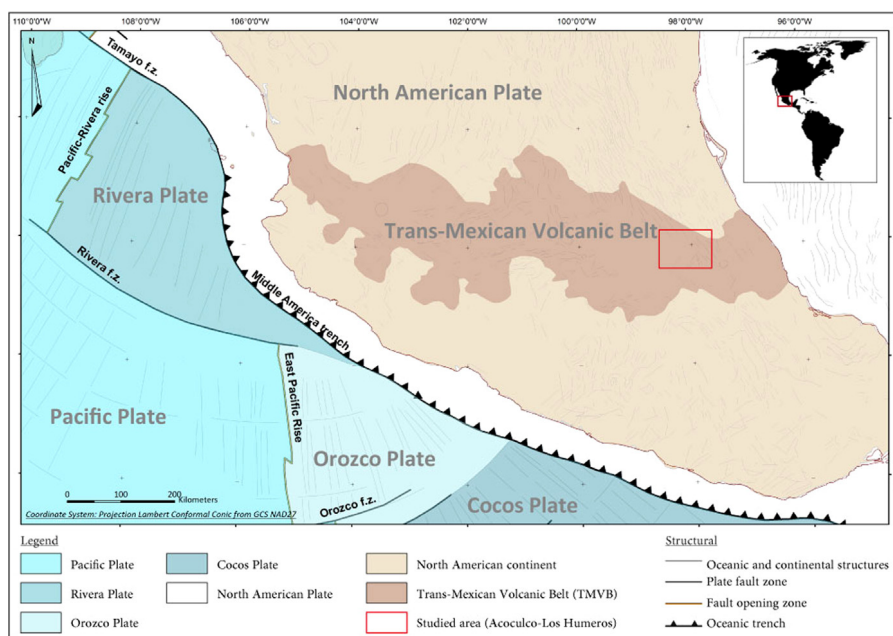


Fig. 6. Simplified tectonic map of Mexico, indicating Acapulco site location, modified from Padilla (2013).

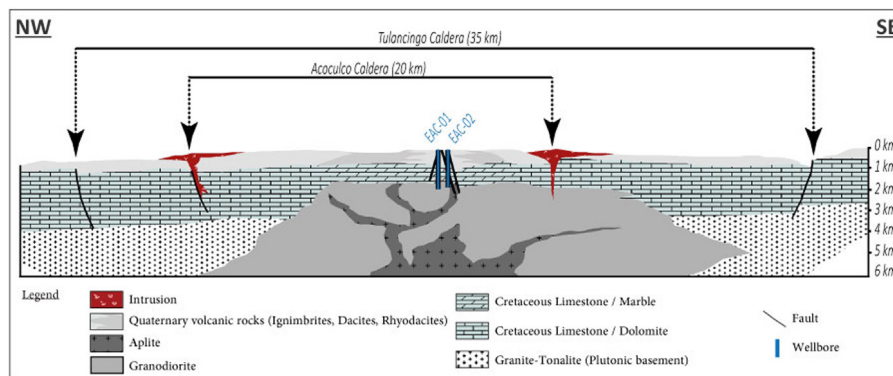


Fig. 7. Schematic geological section of the Tulancingo–Acozulco caldera Complex, modified from López-Hernández et al. (2009).

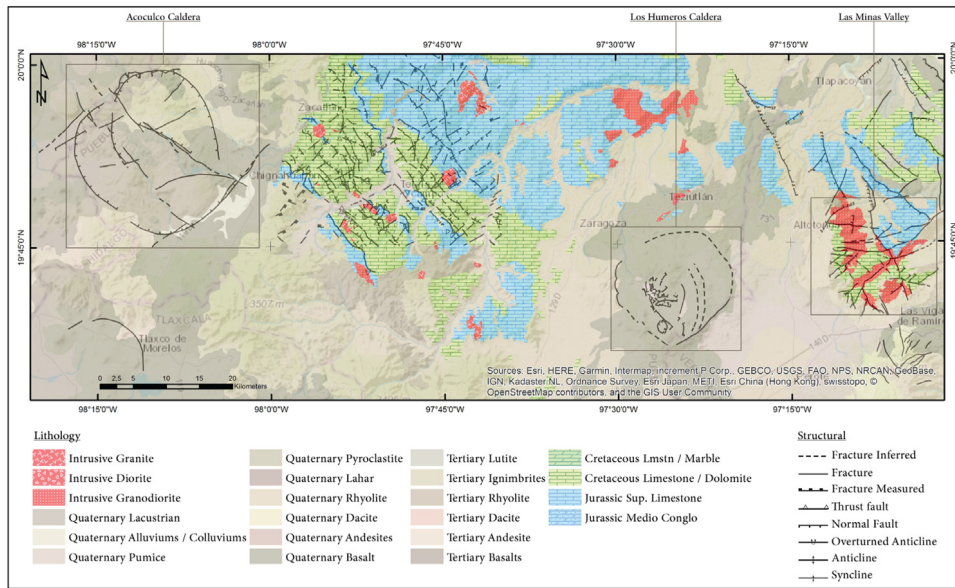


Fig. 8. Geological map of Acoculco – Los Humeros – Las Minas area, modified from (Servicio Geológico Mexicano, 1997, 2002) maps.

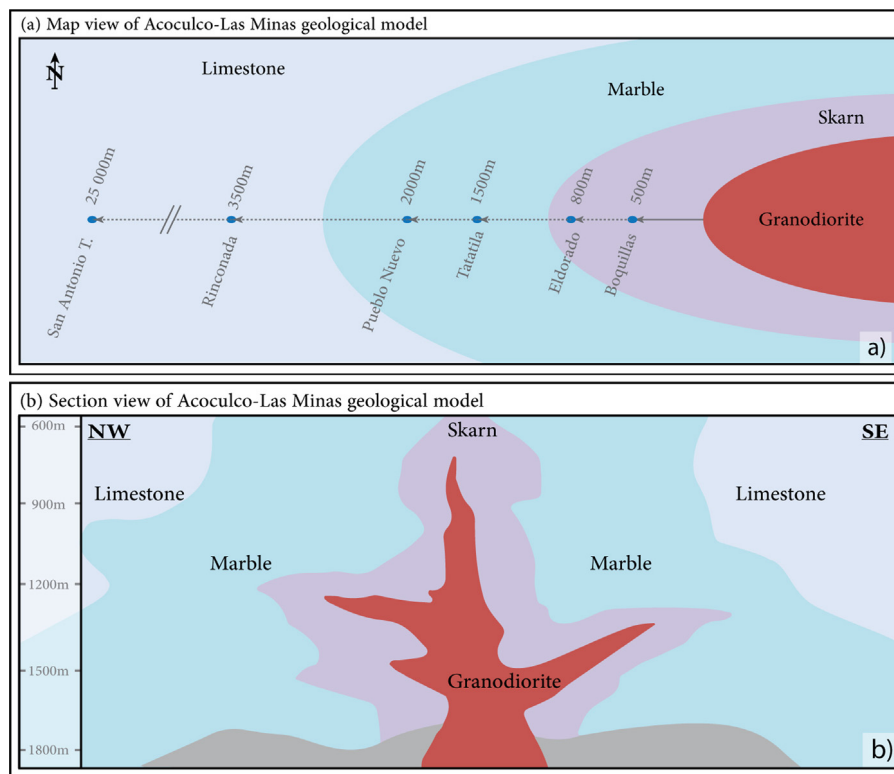


Fig. 9. Acoculco–Las Minas conceptual model: (a) Map view, (b) Section view.

FracMAN^{TM5} from Golder Associates, which was implemented in Petrel^{TM6} (Schlumberger). FracMANTM is very effective at assessing the influence of fractures on bulk permeability (Chesnaux et al., 2009). The two most common methods to express the role of fractures on the reservoir flow are: (i) conversion of the DFN into an equivalent

porous medium (Dershowitz et al., 2004); (ii) or more generally, to upscale the DFN into a continuum of fluid flow model representative of the fractured reservoir (Surette, 2006). For creating DFNs, most of the methods, such as FracMANTM or MoveTM, use similar approaches based on statistics to populate a simulation domain. The results of these models are statistically correct but often do not represent the geology correctly. The multiple point statistic approach is an emerging method that, in addition to being statistically accurate, identifies the fracture network patterns and preserves them throughout the extrapolation.

⁵ Golder Associates (2019).

⁶ Schlumberger Limited (2019).

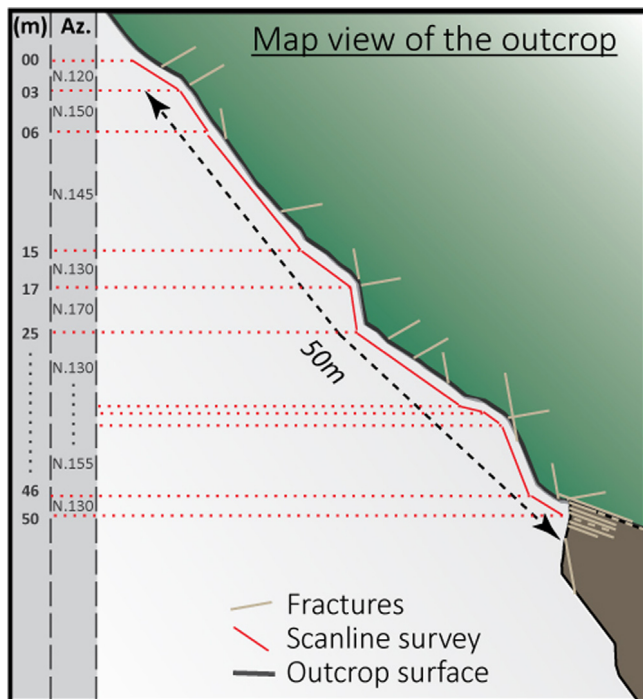


Fig. 10. Illustration describing the scanline survey method on a map view.

Table 1
Fracture sets, colours and orientations.

Fracture set	Pixel code	Pixel colour	Average strike	Average Dip
Fracture set F1	161	Cyan	N 60°	70°
Fracture set F2	140	Green	N 135°	60°
Fracture set F3	69	Navy	N 30°	68°
Fracture set F4	123	Red	N 130°	73°
Fracture set F5	127	Magenta	N 170°	56°
Fracture set F6	90	Violet	N 105°	20°
Fracture set F7	173	Orange	N 80°	74°
No fracture	255	White	NA	NA

3. Method: Workflow description

The workflow developed in this article can be summarized into four steps (Fig. 1): (1) the data collection using the linear scanline survey. The data, from one or several surveys, is gathered in one table-like file format (such as “.csv”); (2) the file is loaded in the Python™ script SkaPy which processes the dataset; (3) using the output from SkaPy, the users manually create, so called Training Images (TIs), an extrapolation of the fractures and their distribution to the outcrop scale and a probabilistic map; (4) The MPS method computes the DFN.

3.1. Using SkaPy

SkaPy is made of two scripts. The first one classifies, analyses and plots the scanline; the second one assigns the geo-referenced coordinates. To run properly, SkaPy uses common Python™ open-source libraries such as Numpy, Matplotlib, Pandas and mplstereonet. The input file is loaded and converted into a Pandas DataFrame, which is a Python™ library implemented to manipulate numerical tables. For the analysis of the scanlines, the input data must contain at least the following information: the name of the outcrop; the name of the survey; the lithology; the position along the scanline survey; the orientation of the survey and the slope of the outcrop; the type of discontinuity (stylolite, fracture, fault, dyke); the structural measurements (strike, dip); the “*a priori*” fracture family, even though this is re-calculated

during the script compilation; and the quantity “Q” that this fracture type has been observed in the interval; the aperture of the fracture (and when possible the filling material) and the length of the fracture trace. To be able to plot the scanline in a georeferenced system, the geographic coordinates of the starting point of the scanline survey are necessary (Fig. 2).

The first SkaPy script is split in seven parts. In SkaPy part–1, the script plots the statistical distribution and histogram of the length and aperture measurements for the whole dataset. This gives a global overview of the data to identify eventual correlations between the two parameters, the fracture trace length and the fracture aperture. In SkaPy part–2, the users need to define the values to be used for the classification of the fractures into sets. The script returns a stereoplot with all the structural measurements, and then one stereoplot per set defined. Proceeding on from this classification, the script computes box-plots, showing the distributions of the fracture heights and fracture apertures per set. The box-plot format emphasizes which values are representative of the core of the distribution as opposed to the ones behaving as outliers. (i) In SkaPy part–3, a first batch of plots is generated, gathering the data per outcrop. (ii) In SkaPy part–4 a second batch of plots is generated, gathering the data per lithology. In SkaPy part–5, the script builds and plots the scanlines. Fig. 3 shows the method used to script the construction of the scanline. For clarity, the fields “m in” and “m out” of the table are here referred to as “stations”. The offsets calculated between these stations would be called the “intervals”. In a first loop, SkaPy builds the trace of the scanline survey: it calculates the length of an interval by determining the positions of the stations, and compiles these intervals following the orientation given in “Surf Dir”. Then, in a second loop, SkaPy calculates the quantity of fractures Q belonging to each of the fracture sets within this interval. The algorithm then splits the intervals into $(Q + 1)$ sections in order to equally distribute the fractures, and to assign a specific position to each of the fractures. X and Y coordinates are calculated from the origin station of the scanline.

In SkaPy part–6, the script is used for the extrapolation of the scanlines into training images (TIs). In this part, instead of using the fracture length and strike values as in SkaPy part–5, the script plots the average strike value representative for each set, and extends the lengths of the fractures such that they fill the entire plot. The objective of this step is to offer guidance to the users for the following step of the workflow, which consists of creating the training images (TIs). In SkaPy part–7, the script computes the stereonets and rose diagrams for each outcrop. The second script, SkaPy–UTM, assigns the UTM coordinates to the scanline, including all the fractures, by modifying the origin of the reference system.

3.2. Method: DFN creation using Multiple point statistics

Multiple point statistics (MPS) is used to extrapolate geological patterns to larger scales. Classical geostatistical methods use variograms; the MPS method uses the training images (TIs) as input data for the simulation. The concept is based on analysing the pixel content of the TI to identify the spatial patterns to be reproduced into a larger domain (Tahmasebi, 2018). The TI is considered as a grid of pixels which contains geological patterns. For that reason, the TI needs to include the possible range and shape of the geological entities to be modelled (Bruna et al., 2019). In this study, we used the Direct sampling (MPS) code as presented in Straubhaar et al. (2011).

3.2.1. Creation of the training image

The TIs of the fracture network, created from the scanline generated by SkaPy (Fig. 4), are then extrapolated into a larger model, creating the DFN. Scanline surveys provide datasets of very localized data, usually from tens to hundreds of metres. In comparison, the DFN is often used to represent fracture geometries over a much larger area, such as kilometre scale reservoirs. Building the TIs is the opportunity

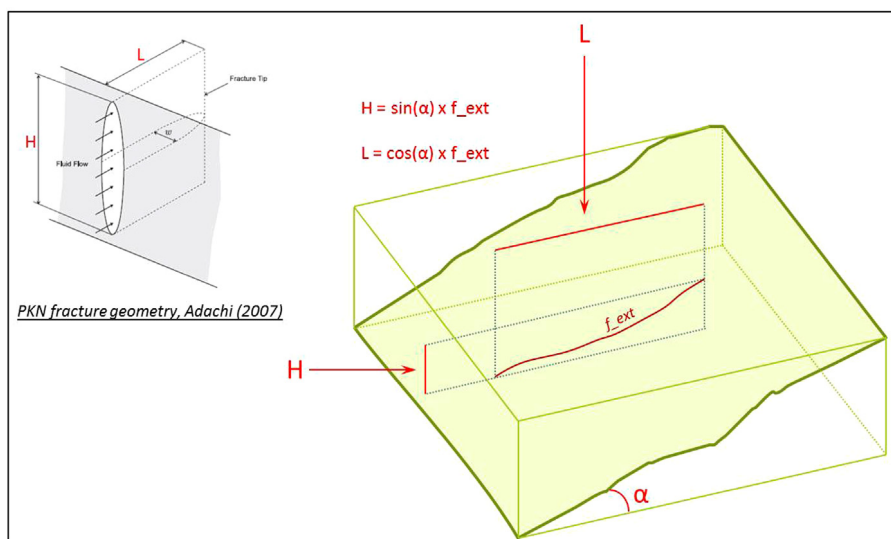


Fig. 11. Fracture dimensions correction: the fracture extent (f_{ext}) is measured at the outcrop surface; from this value, we calculate the length (L) and height (H) of the fracture using trigonometry rules with the angle (α) given by the dipping of the outcrop surface.

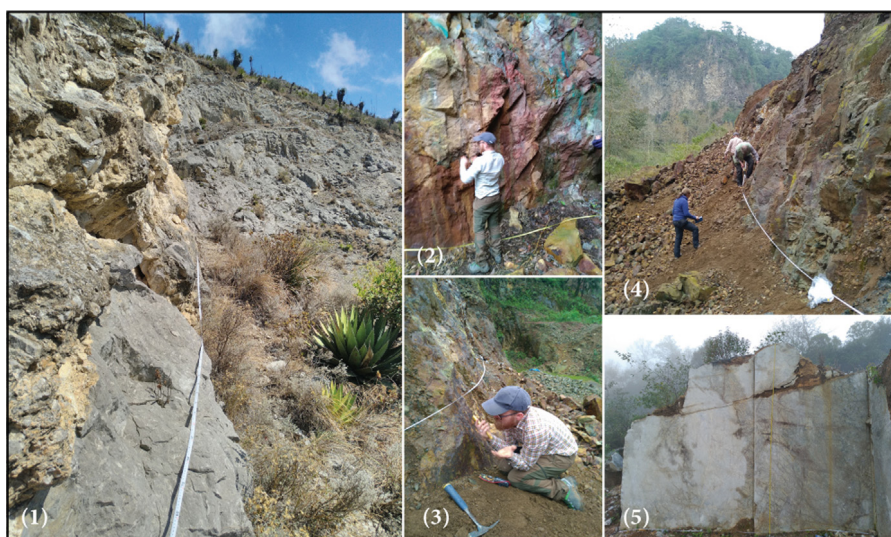


Fig. 12. Illustration of scanlines at the outcrops: (1) at San Antonio Tenextepec outcrop, limestone; (2) at Eldorado outcrop, skarn; (3,4) at Boquillas outcrop, skarn; (5) at Pueblo Nuevo outcrop, Marble.

Table 2

Lithology from EAC 1 and EAC 2 well-markers (Abbreviations: Measured Depth (MD) and Total Depth (TD)).

Lithology	EAC 1 well-marker depth	EAC 2 well-marker depth
Recent volcano-clastic deposits	From 0 to 830 m MD	From 0 to 340 m MD
Carbonates section	From 830 to 1650 m MD	From 340 to 1580 m MD
Granodiorite – Granite	From 1650 to 2000 m MD (TD)	From 1580 to 1900 m MD (TD)

for the users to adjust this scaling issue: not every fracture reported in the scanline is represented in the DFN. Users can decide which fractures matter and need to be represented at a larger scale. The method used to populate the TIs from the scanlines is: (i) the scanline is used as firm value; (ii) the guidelines, created in SkaPy part-6, are displayed in the background (Section 3.1); (iii) the users manually digitize the fractures following the guidelines; for the fracture lengths, use the values of the distribution from the quantiles calculated in SkaPy part-4, excluding the outliers. Because the TIs are created from the scanlines output from SkaPy, the georeferences are derived from the scanline coordinates.

3.2.2. Training images and probability map

The TI is the only input for fracture geometries in the MPS method. For this reason, all ranges of dimensions, orientations of the fracture patterns need to be represented in the TI. The TI is saved as an image format, so that it can be analysed as a grid where every pixel has a colour value coding the structural entity. A reference table is given in Table 1 as an example. The algorithm of the MPS analyses the value of every pixel and pixel associations to identify the pattern composing the TI.

The MPS then builds one DFN based on two TIs and a probability map (Fig. 5). The probability map is a representation of the destination

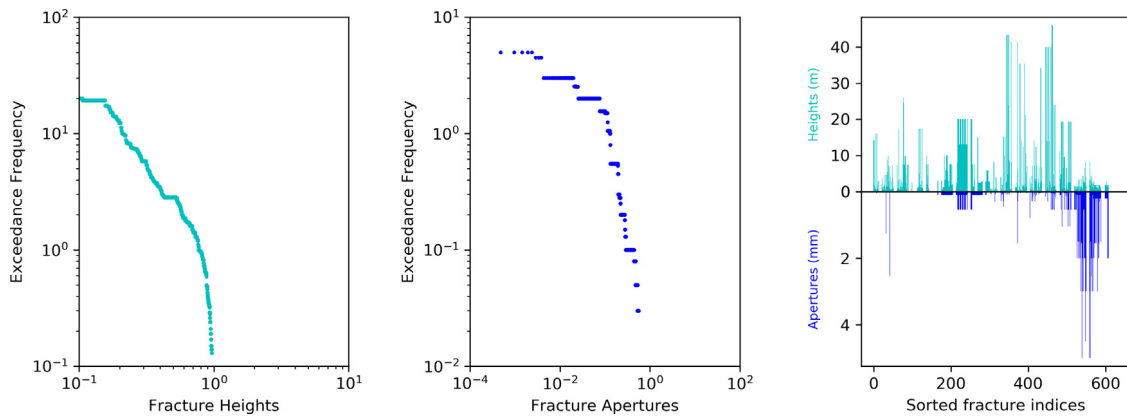


Fig. 13. SkaPy output part-1: The dataset at glance, from left to right: exceedance frequency of the fracture heights, then exceedance frequency of the fracture apertures and finally plotting fracture apertures against fracture heights; fractures are in this last plot sorted by using fracture numerical index from the database. As the database consists of a succession of scanline surveys, fractures are plotted in the following order: (from start to end of surveys) Boquillas, Eldorado, Pueblo Nuevo, Tatatila, Rinconada, San Antonio Tenextepac.

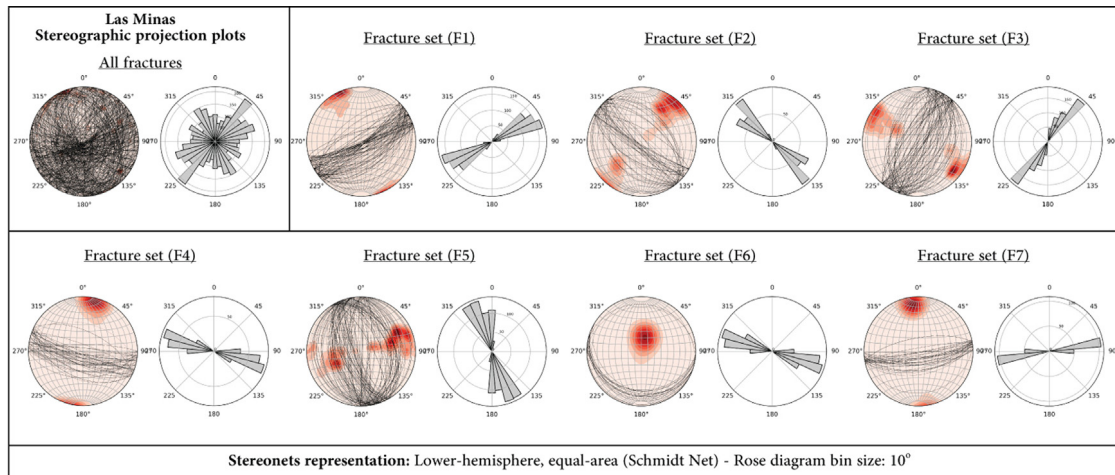


Fig. 14. SkaPy output part-2: Las Minas stereonet plots and rose diagrams - On the left, before classification into sets; On the right, fractures are separated into sets.

domain where to populate the extrapolated fracture networks. This map defines the areas where each TI should be used to populate the DFN in the simulated domain. The probability map could represent geological entities, such as faults or fluvial channels or different lithologies. In this study, however, we linearly interpolate between the two TIs for simplicity.

4. Results: Case study of Acoculco geothermal site in Mexico

4.1. Geological context

4.1.1. Acoculco within the regional geological context

The method we developed creates discrete fracture networks (DFNs), where the main input are scanline datasets measured at outcrops near the Acoculco test site.

When reporting a scanline in the field, measurements are done objectively. Later, when processing the data, the users want to set these measurements in context. This is why it is essential to know the regional structural context to classify the scanline dataset.

Acoculco is located in the Trans-Mexican volcanic belt (TMVB), about 100 km North-East of Mexico City. The TMVB is a mountain range resulting from the subduction of the Avalon, Rivera, Orozco and Cocos plates beneath the North American plate (Ferrari et al., 2012; Manea et al., 2013) (Fig. 6). The TMVB is composed of a thick series of Pliocene to Quaternary volcanic deposits forming a

high volcanic plateau. This plateau overlies a fold and thrust belt resulting from the Sierra Madre Oriental, a Laramide deformation of the Jurassic to Cretaceous deposition of the carbonate sequence (Carrasco Núñez et al., 2017; Norini et al., 2015; López-Hernández et al., 2009; Campos-Enriquez and Garduño-Monroy, 1987).

Two geothermal exploration wells, EAC1 & EAC2, were drilled in Acoculco, about 500 m apart, in 1995 and 2008. Since the wells are really close to each other and even though the well-markers position suggest a fault could cause an offset between the two wells, their lithological sequence is very similar and can be summarized, as described by (Viggiano-Guerra et al., 2011; López-Hernández et al., 2009), in Table 2:

Fig. 7 is a representation of the geological section in Acoculco adapted from the model of López-Hernández et al. (2009), based on gravity, magnetic and well data, which has been further developed by Lorenzo Pulido et al. (2010) and Canet et al. (2015). The carbonate section consists of dolomitic limestones, limestones metamorphised into marbles or metasomatised into skarns due to the intrusion of a granodioritic pluton.

4.1.2. Las Minas analogue

Las Minas is a village located down in a valley, about 120 km East of Acoculco. Las Minas valley is considered here as an excellent analogue of the Acoculco geothermal system. As seen on the geological map (Fig. 8), Acoculco and Las Minas are made of rocks that were deposited

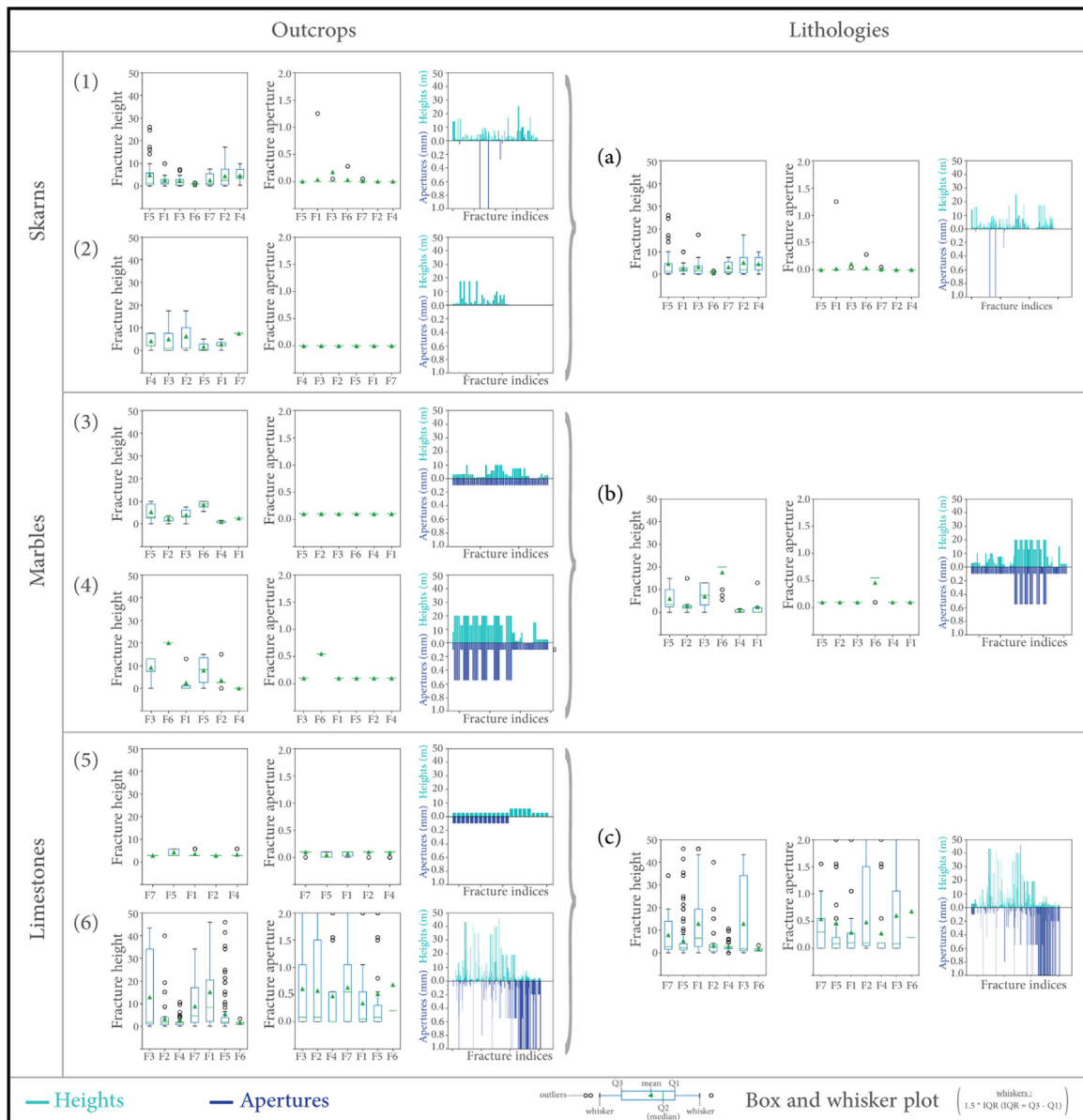


Fig. 15. SkaPy output part-3,4: Tri-plots showing the fracture heights box-plots, apertures box-plots and distributions, per outcrops and finally, per lithologies: (1) Outcrop: Boquillas, (2) Outcrop: Eldorado, (3) Outcrop: Pueblo Nuevo, (4) Outcrop: Tatatila, (5) Outcrop: Rinconada, (6) Outcrop: San Antonio Tenextepec, (a) lithology: Skarns, (b) lithology: Marbles, (c) lithology: Limestones.

in the same geological environment. The exposed rock sequence in the Las Minas analogue is comparable to the log of Acoculco wellbores, from the recent volcanic cover, overlaying the carbonate sequence made of the Early Cretaceous limestones called the Tamaulipas Formation, all the way to the granodioritic pluton, which is exposed deep in the valley, where the river Rio Las Minas runs. Hundreds of metres away from the river bed, two outcrops, named Boquillas and Eldorado, expose skarns; higher on the flanks of the valley, two marble outcrops are found: Pueblo Nuevo and Tatatila. Further away is first one outcrop made of marblized dolomitic limestones called Rinconada, and much further, beyond the influence of the intrusion, San Antonio Tenextepec is made of unaltered dolomitic limestones. These outcrops represent a proximal to distal context for the granodioritic intrusion into the carbonates. Fig. 9 is a simplified representation of the geological context.

4.1.3. Structural context

Four major structural trends are identified in the region from Acoculco to Las Minas. The Acoculco Caldera is located at the intersection of two regional fault systems, one trending NE and the other NW (López-Hernández et al., 2009). The main structures in the region are inherited from: (i) the Laramide Orogeny, Late Cretaceous with a NE - SW compression, inducing NW - SE thrusts and folds affecting the lithological sequence from the metamorphic basement up to the Mesozoic sedimentary rocks; (ii) the Eocene–Pliocene extensional and transtensional phases that produced N - S to NE striking faults (Carrasco Núñez et al., 2017; Norini et al., 2015). A micro-structural study identified two major structural directions: (i) the first direction is from N140 to N170; (ii) these structures are cut by a second trend oriented from N40 to N70; this confirms the regional trends and identifies the direction N40 as a maximum regional stress (Campos-Enriquez and Garduño-Monroy, 1987).

In the Los Humeros Volcanic Complex (a ten of kilometres westwards from Las Minas), the main structures driving the ascending hot

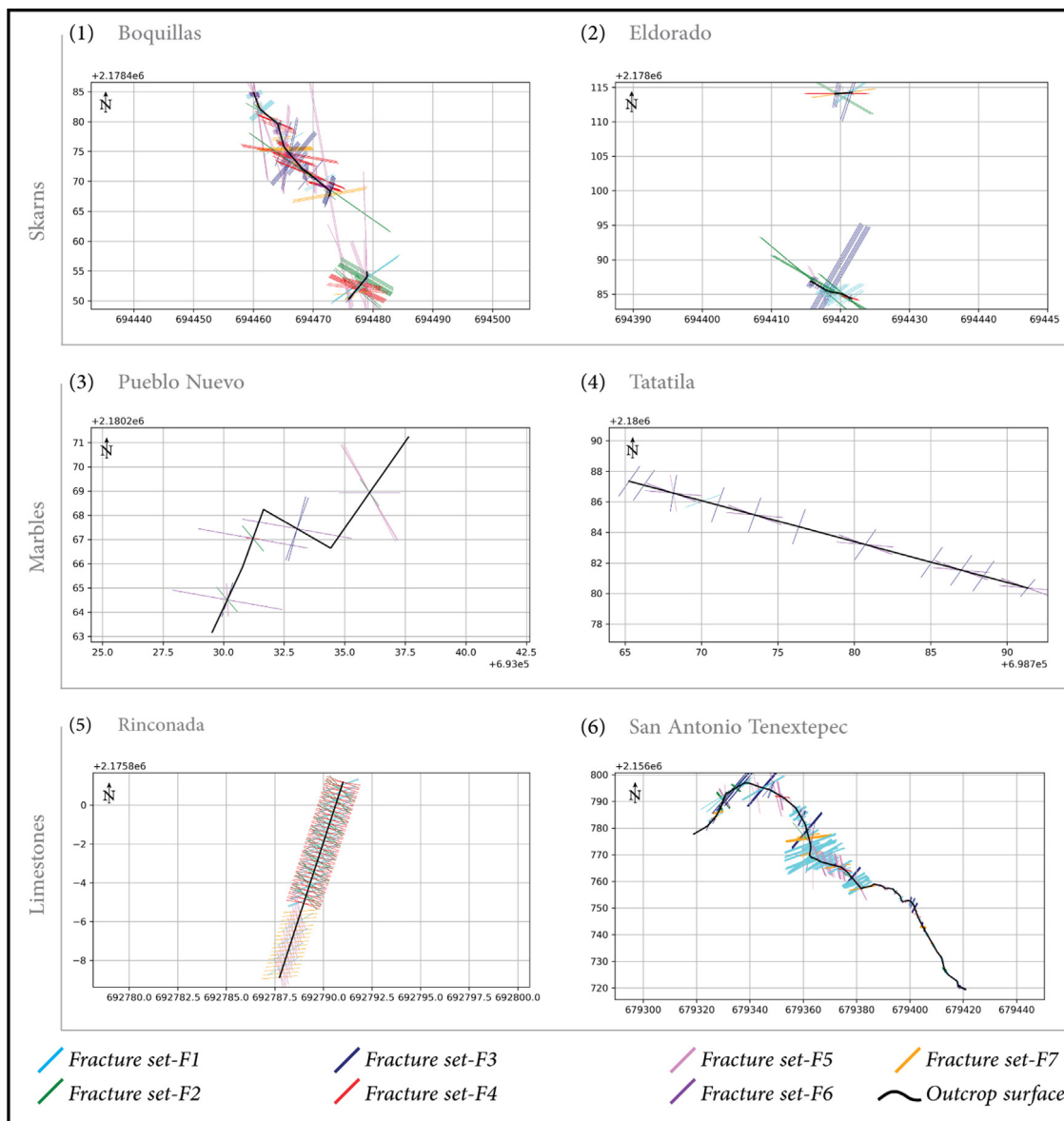


Fig. 16. SkaPy output part-5: Scanlines in Las Minas: (1) Skarn: Boquillas, (2) Skarn: Eldorado, (3) Marble: Pueblo Nuevo, (4) Marble: Tatatila, (5) Limestone: Rinconada, (6) Limestone: San Antonio Tenex-tepec.

The black line represents the trace of the scanline, thus an approximation of the outcrop morphology. Along this line, fractures are plotted as vectors. The vector colour depends on the fracture set and its length depends on the fracture height. These scanlines are all plotted in the same grid UTM Q14.

fluids have been identified as the NNW - SSE east-dipping faults (Norini et al., 2015). Additionally, Carrasco Núñez et al. (2017) report that producing geothermal wells are located along the main NNW - SSE active faults or near the N-S striking fault splays NW - SE and NE - SW-trending regional faults systems appear to have been permeable fluid flow pathways (López-Hernández et al., 2009).

4.2. Case Study: Applying the scanline survey

In the Aocolco field, we want to predict the distribution of the fractures in the reservoir formation which corresponds to the carbonate sequence. As described in Section 4.1.2, the carbonate sequence includes three lithologies: the limestones, marbles and skarns. For that reason, the linear scanline survey method was recorded in two outcrops for each of these rock types, for a total of six outcrops (Table 3).

The trace of the scanline survey follows the direction of the outcrop walls. As explained in Section 3.1, each interval is delimited by two stations in between which the wall follows a constant direction (Fig. 10).

Table 3
Outcrop names, locations and lithologies.

Outcrop	Lithology	Latitude [dec.deg]	Longitude [dec.deg]
Boquillas	Skarn	19.692 277	-97.144 793
Eldorado	Skarn	19.688 609	-97.145 828
Pueblo Nuevo	Marble	19.708 514	-97.158 178
Tatatila	Marble	19.696 589	-97.136 941
Rinconada	Limestone	19.668 151	-97.161 12
San Antonio Tenex-tepec	Limestone	19.496 045	-97.291 252

Within these intervals, fractures are counted individually or per group of fractures having the same strike and dip values; the number of fractures is then reported in column “Q” of the dataset (Fig. 2). The value reported for the aperture is the average value of the aperture measured for a fracture, or a set of fracture. The length and height of the fractures are measured along the outcrop. Because of that, if a

fracture trace is longer than the outcrop, its measurement is limited to the length of the trace visible within the outcrop.

The fracture trace length measurements closely depend on the morphology of the outcrop. The height and slope of the outcrop walls change from the start to the end of the survey. For that reason, we applied a correction on our fracture trace length measurement, by converting it into a vertical height and a horizontal length, based on the slope of the outcrop, using a simple trigonometric rule (see Fig. 11). The measurements are well constrained up to 5 m ($\pm 1 \times 10^{-3}$ m), fairly well constrained up to 10 m and eventually less over 20 m (± 5 m), depending on the regularity of the outcrop morphology and its accessibility for the measurements. Fig. 12 shows a sample of the Las Minas outcrops.

4.3. Case Study: Running SkaPy

The dataset, containing the scanlines from the six outcrops, is composed of about 600 rows. The total length of scanlines is 257 m, which includes 2090 fractures (Table 4).

According to this dataset, most of the fractures in the skarn outcrops, Boquillas and Eldorado are tight to closed (in this study, fracture aperture classification results from qualitative and quantitative description. As indication, open fracture refers to aperture > 0.1 cm, partly open: aperture of the fracture varies from 0.05 to 0.1 cm, tight to partly open: aperture of the fracture varies but is always < 0.05 cm, closed: the fracture never has any aperture). In the marble outcrops, the quantity of fractures is much lower, but most of them are open to widely open. Regarding the limestone outcrops, Rinconada is located on a regional fault and San Antonio Tenextepec is on a thrust fault. Both of them are highly fractured. As the scanline in San Antonio Tenextepec is the longest, a higher range of variability within the dataset is expected.

When running SkaPy, the first figure shows the distribution of fracture heights and fracture apertures for the whole dataset. In this case there is no direct correlation between the size of the fracture and the width of the aperture (Fig. 13).

In SkaPy, part 2, we first classified the fractures in 4 sets, based on the regional structures described in the literature presented in Section 4.1.3. These 4 sets are: N50, N100, N135, N170. Since there is a large amount of fractures, we decided to apply a more detailed classification, adding 3 more sets, based on the dip angle of the fractures (Fig. 14).

As the objective is to characterize the fractures, we want to calculate the representative values, per lithology, of the fractures height and aperture. In Fig. 15, the left column shows the box-plots and distributions of fracture heights and apertures measured in the outcrops, and the right column shows the box-plots and distributions recalculated for all the examples of a given rock type. Then, SkaPy builds the scanlines, and SkaPy-UTM plots them in the UTM system (Fig. 16).

4.4. Case Study: Creating the Training Images (TIs) and running MPS

Following the workflow chart (Fig. 1), the next step is the creation of the TIs. Fig. 4 shows the method used to create the TI of the Boquillas outcrop, one of the two skarn outcrops. In this example, the scanline survey is made of two orthogonal sections separated by 20 m: the main one is about 25 m and the second one 6 m long. We used the output from SkaPy part-6, where the extended fractures serve for guidance. This tool emphasizes the fracture patterns. In this case, the scanline shows that the blue and red sets, representing sets F3 and F4 respectively, are organized as clusters of fractures, while the sets yellow F7 and green F2, are much more equally distributed. This extrapolation works as the process of up-scaling: the scanline is a very high resolution dataset (decimetric), extrapolated to a DFN of a much larger scale, as in this case $(600 \times 600)\text{m}^2$. Therefore, not all fractures can be populated, and the TI serves as a transition tool representative of the scanline survey at a large scale.

Following this method, Fig. 17 shows the TIs obtained for the three lithologies: the skarns, the marbles and the limestones. These training images, together with a probabilistic map, as presented in Fig. 5, are used as inputs for the computation of the DFNs, using the multiple point statistics method.

In this case study, the objective is to obtain a DFN model representing the transition of the fracture distributions, from one outcrop to the second, within the same rock type. For this reason, we used a linear extrapolation from one TI to the other. Therefore, the probability map consists of a domain of $(600 \times 600)\text{m}^2$, divided into three equivalent sub-domains of $(200 \times 600)\text{m}^2$. The first sub-domain is populated using one TI, the second with the other TI and the third, in the middle is populated with the calculated interpolation.

4.5. Case Study: created DFNs

The fracture patterns are very well preserved during the MPS extrapolation (Fig. 18). For example, the marble rock type stays, after extrapolation, consistent to its sparse and homogeneous fracture distribution, while the extrapolation of the fracture distribution for the limestones well represents the influence of regional faults, which causes the higher fracture frequency. Another element to control the fracture patterns extrapolation is the fracture lengths. The 3 created DFNs show longer fractures on their right side, corresponding to the influence of the second TIs of these three lithologies.

5. Discussion & way forward

In the process of generating DFNs, several issues affect the quality of the resulting model. When DFN is created following the method described here, one has to be aware that the error or biases induced by the scanline survey itself, as for example the fracture trace length or fracture representativity, are not overcome. Scanline data collection also present a limitation regarding fracture relationships, as in this study, we do not report information regarding fracture abutments. A first clear solution, would be to complete the scanline dataset with interpretation of virtual outcrop images from drone imagery as developed by NORCE Research with Lime™ software (Buckley et al., 2019). This would mitigate the issue of fractures representativity and provide data on fractures relationships. Eventually, this could be coupled with the Facets plugin developed by Dewez et al. (2016) and implemented in the CloudCompare™ platform.⁷ This Facets plug-in is an algorithm that detects automatically the orientations of the outcrop surfaces. Assuming these surfaces are the result of erosion working along weaknesses of the rock, the algorithm could be used to estimate the most frequent fracture directions over an outcrop.

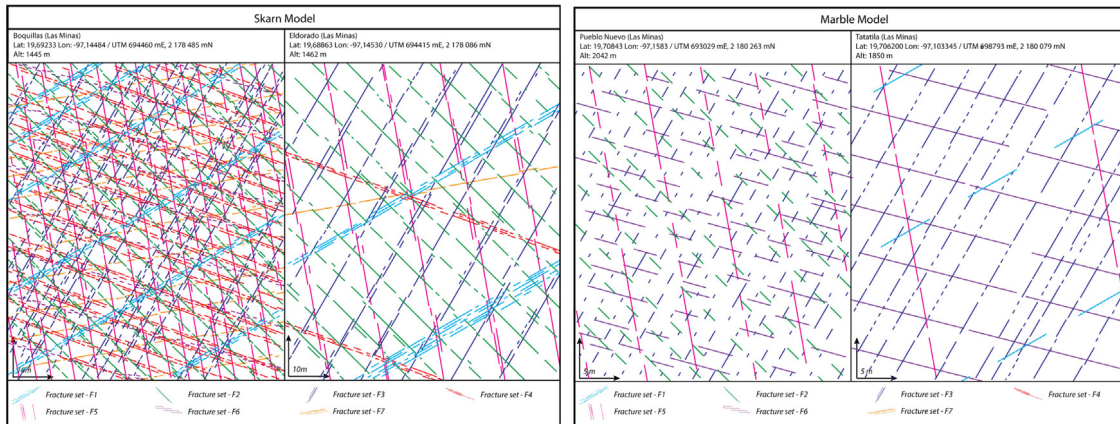
Another solution would be to integrate the circular scanlines surveys at regular intervals along the linear one, as proposed by Watkins et al. (2015), to obtain a more complete dataset and reduce these biases, providing data on fracture chronologies and topology relationships.

Another limitation is the accessibility of the reservoir itself. In this study we used Las Minas as analogue system of the Acozulco geothermal field. This gives us a good prediction of the fracture network at the surface. By essence, there might be differences regarding past and present tectonic stresses between Acozulco subsurface reservoir and its surface analogue of Las Minas. To get a more accurate model, it would be possible to correct Las Minas fracture models by calibrating to the Acozulco well core samples. In addition, the present day local stress field in Acozulco at depth may differ from the one at the surface of Las Minas. This may be compensated by measuring the current stress field downhole, and applying a correction on the fracture aperture and orientation. More generally, using well log data, such as Formation

⁷ CloudCompare (2019).

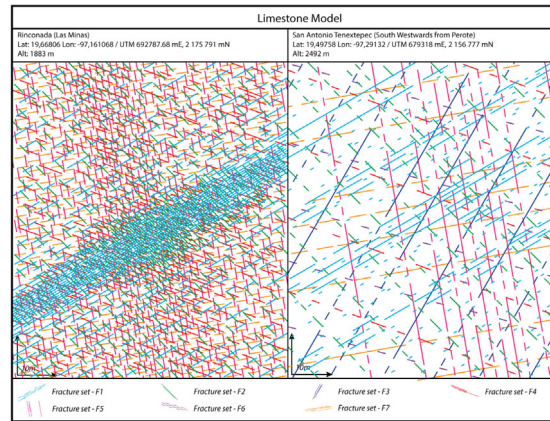
Table 4
Scanline surveys realized and frequency of measured fractures.

Outcrop	Lithology	ScL-length	Nbr.Fractures	Frequency: fracture/metre
Boquillas	Skarn	29 m	351	12.10
Eldorado	Skarn	10 m	104	10.40
Pueblo Nuevo	Marble	15 m	50	3.33
Tatavila	Marble	30 m	63	2.10
Rinconada	Limestone	11 m	224	20.36
San Antonio Tenextepec	Limestone	162 m	1298	8.01
Average		257 m	2090	8.13



(a) Skarn TIs.

(b) Marble TIs.



(c) Limestone TIs.

Fig. 17. Results of the manually populated TIs, from left to right: for the skarns, marbles, limestones.

Imagery (FMI), would significantly refine the prediction of the fracture distribution in the subsurface.

Regarding the approach itself, three elements related to SkaPy have to be considered: [Markovaara-Koivisto and Laine \(2012\)](#) in their MATLAB[®] script, include an automatic classification of the fractures into sets. SkaPy does not automatize this part; we ask the users to define their own sets. We prefer to leave this classification to the users rather than to statistics. This could be debated as it makes room for personal bias. The choice of leaving this is based on the assumption that the users know which fracture sets to expect, and reinforces the will to keep control on the geological meaning of this processing. The users can control the quality of their classification by checking the plotted stereonet ([Fig. 12](#)). Nevertheless, the automated classification tool could be implemented for guidance.

In the SkaPy scripts, as described in this manuscript, fracture geometry is not taken into account. We see two possible ways to improve this limitation: the first would be to integrate the fracture abutments;

and the second is the classification of fracture shapes proposed by [ISRM \(1978\)](#).

A starting point to define the fracture abutment could be made by defining a chronology of the fractures determining the ‘priority’ on fracture intersections.

Regarding the fracture typology, the populating of the TIs, could follow a similar classification, as initiated by [Markovaara-Koivisto and Laine \(2012\)](#) describing the fracture tortuosity.

In SkaPy part–5, at the scanline construction, the script induces a small error of fracture positioning, which is described in the [Fig. 3](#). As explained in [3.1](#), the scanline is built using “stations” and “intervals”. In these intervals, fractures from the same set are distributed at equal distances over the interval. As a consequence of that method, a single fracture will be placed in the middle of the interval instead of its exact position in reality. This error is kept small by the choice of interval length. The larger the interval, the bigger the error.

This workflow has been developed to analyse the feasibility of establishing an enhanced geothermal system in the Acoculco field.

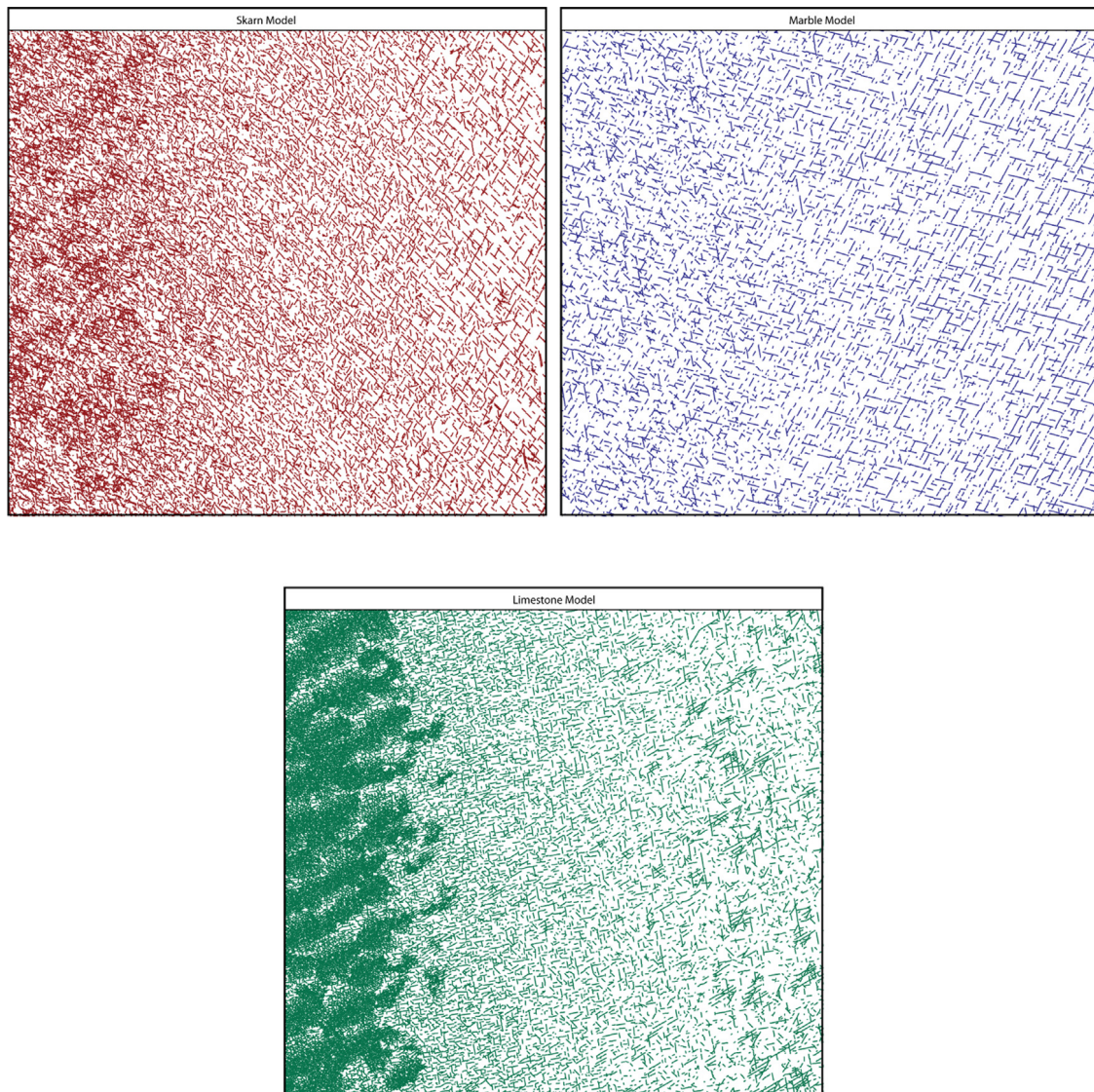


Fig. 18. Results of computed DFNs using the MPS method, from left to right: for the skarns, marbles, limestones.

For that reason, we need to predict the fractures and the fracture network structuring the reservoir formations. The aim is to be able to calculate the role of the fractures for the fluid flow circulation. The DFN provides the basis for simulating the fluid circulation using a doublet of two wells, one injector and one producer, connected by fractures. Preliminary results are presented in Fig. 19 and the full study is available in Lepillier et al. (2019).

6. Conclusion

In the context of developing an enhanced geothermal system (EGS), it is fundamental to evaluate the fracture system present in the subsurface. Very often no detailed information for such an evaluation is available. In the study presented here, we propose a workflow to predict the fractures and the fracture network from outcrops. The four steps from data collection in suitable analogue systems at the surface to generating a Discrete Fracture Network provide results that go well beyond a statistical representation of the fracture networks observed at the surface. By preserving the real fracture distribution as well as measured fracture characteristics such as apertures, derived lengths and orientations, the DFNs computed this way can be used to predict reservoir properties, such as bulk permeability and provide the basis for reservoir enhancement procedures for a potential EGS development.

While the method cannot replace information retrieved from direct access to the subsurface by downhole images and measurements, it does provide, to our knowledge, the currently most realistic extrapolation of a surface fracture model from outcrop to field scale.

Data availability

The dataset used and the SkaPy script presented in this study are available in the repository: <https://github.com/BatLep/SkaPy.git>.

Declaration of competing interest

The authors declare that they have no known competing financial interests or personal relationships that could have appeared to influence the work reported in this paper.

CRediT authorship contribution statement

Pierre-Olivier Bruna: Conceptualization, Methodology, Software, Validation, Formal analysis, Writing - original draft, Writing - review & editing, Visualization. **David Bruhn:** Resources, Writing - original

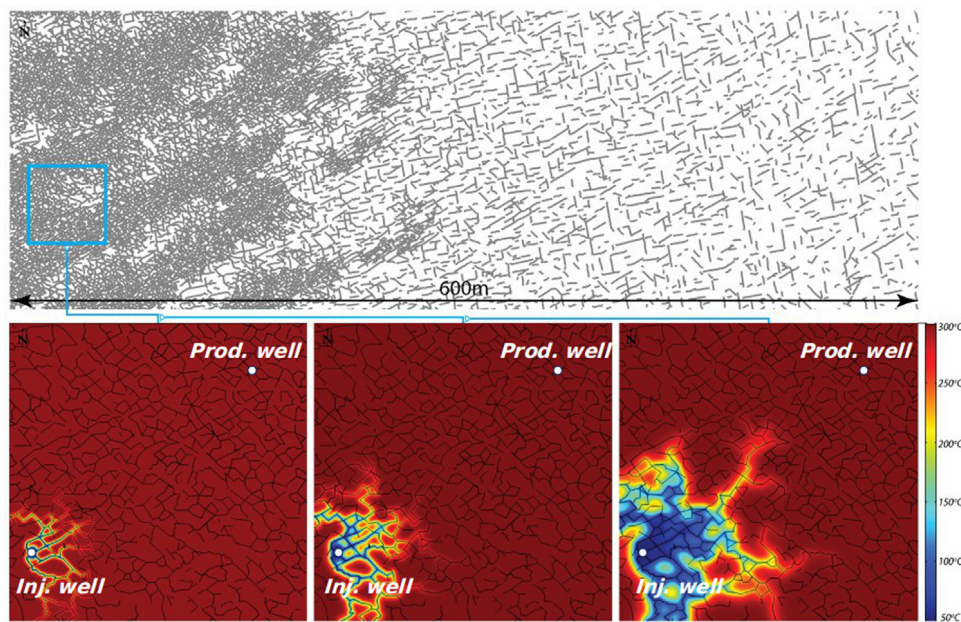


Fig. 19. Preliminary result of a fracture controlled fluid flow simulation of a doublet of wells pumping via the DFN created in using this workflow. The upper part of the figure shows the entire created DFN for the Limestones; The lower part of the figure shows, 3 different stages in chronological order from left to right, of the fluid flow from injection well into the fracture network.

draft, Supervision. **Eivind Bastesen**: Methodology, Validation, Investigation, Writing - original draft. **Alexandros Daniilidis**: Conceptualization, Methodology, Software, Validation, Formal analysis, Writing - original draft, Writing - review & editing, Visualization. **Oscar Garcia**: Methodology, Validation, Investigation, Writing - original draft. **Anita Torabi**: Methodology, Validation, Investigation, Writing - original draft. **Walter Wheeler**: Methodology, Validation, Investigation, Writing - original draft.

Acknowledgements

This work is part of the GEMex consortium, a European–Mexican collaboration, which aims at investigating non-conventional geothermal systems: (i) an enhanced geothermal system, as studied in the case of Acoculco site; (ii) and a supercritical system, as studied in the geothermal field of Los Humeros. We would like to thank all the GEMex team, and especially our Mexican partners who guided us in the field. GEMex has received funding from the European Union's Horizon 2020 research and innovation programme under grant agreement No. 727550, Mexican Energy Sustainability Fund CONACYT-SENER, project 2015-04-268074. This study also received funding from the DESTRESS project, Grant agreement number 691728, part of the European Union's Horizon 2020 research and innovation programme. More information is available on: www.gemex-h2020.eu. We would like to extend this acknowledgement with thanking The RandLab research group hosted by the University of Neuchâtel in Switzerland for providing Delft University of Technology licenses to use Ar2Gems software; more information is available on: www.randlab.org.

References

Barbier, M., Hamon, Y., Callot, J.P., Floquet, M., Daniel, J.M., 2012. Sedimentary and diagenetic controls on the multiscale fracturing pattern of a carbonate reservoir: The Madison Formation (Sheep Mountain, Wyoming, USA). *Mar. Pet. Geol.* 29 (1), 50–67. <http://dx.doi.org/10.1016/j.marpetgeo.2011.08.009>.

Barton, N., Choubey, V., 1977. The shear strength of rock joints in theory and practice. *Rock Mech.* 10 (1–2), 1–54. <http://dx.doi.org/10.1007/BF01261801>.

Bruna, P.-O., Prabhakaran, R., Bertotti, G., Succo, A., Bistacchi, A., Storti, F., 2018. Multiscale 3D prediction of fracture network geometry and fluid flow efficiency in folded carbonate reservoir analogues; Case study of the Island of Pag (Croatia). In: *Third EAGE Workshop on Naturally Fractured Reservoirs*, vol. 2018, no. February. EAGE, Muscat, Oman, p. 1.

Bruna, P.O., Straubhaar, J., Prabhakaran, R., Bertotti, G., Bisdorn, K., Mariethoz, G., Meda, M., 2019. A new methodology to train fracture network simulation using multiple-point statistics. *Solid Earth* 10 (2), 537–559. <http://dx.doi.org/10.5194/se-10-537-2019>.

Buckley, S.J., Ringdal, K., Naumann, N., Dolva, B., Kurz, T.H., Howell, J.A., Dewez, T.J.B., 2019. LIME : Software for 3-d visualization, interpretation, and communication of virtual geoscience models. *Geosphere* 15 (1), 1–14. <http://dx.doi.org/10.1130/GES02002.1/4610849/ges02002.pdf>.

Campos-Enriquez, J.O., Garduño-Monroy, V.H., 1987. The shallow structure of Los Humeros and Las Derrumbadas geothermal fields, Mexico. *Geothermics* 16 (5–6), 539–554. [http://dx.doi.org/10.1016/0375-6505\(87\)90038-1](http://dx.doi.org/10.1016/0375-6505(87)90038-1).

Canet, C., Trillaud, F., Prol-Ledesma, R.M., González-Hernández, G., Peláez, B., Hernández-Cruz, B., Sánchez-Córdova, M.M., 2015. Thermal history of the Acoculco geothermal system, eastern Mexico: Insights from numerical modeling and radiocarbon dating. *J. Volcanol. Geotherm. Res.* 305, 56–62. <http://dx.doi.org/10.1016/j.jvolgeores.2015.09.019>.

Carrasco Núñez, G., Hernández, J., De León, L., Dávila, P., Norini, G., Bernal, J.P., Jicha, B., Navarro, M., López-Quiróz, P., Digitalis, T., 2017. Geologic Map of Los Humeros volcanic complex and geothermal field, eastern Trans-Mexican Volcanic Belt. *Mapa geológico del complejo volcánico Los Humeros y campo geotérmico, sector oriental del Cinturón Volcánico Trans-Mexicano*. *Terra Digit.* 1 (2), 1–11. <http://dx.doi.org/10.22201/igg.terradigitalis.2017.2.24.78>.

Chesnaux, R., Allen, D.M., Jenni, S., 2009. Regional fracture network permeability using outcrop scale measurements. *Eng. Geol.* 108 (3–4), 259–271. <http://dx.doi.org/10.1016/j.enggeo.2009.06.024>.

Chugunova, T., Corgel, V., Gomez, J.P., 2017. Explicit fracture network modelling: From multiple point statistics to dynamic simulation. *Math. Geosci.* 49 (4), 541–553. <http://dx.doi.org/10.1007/s11004-017-9687-9>.

CloudCompare, 2019. CloudCompare. CloudCompare, URL: <http://www.cloudcompare.org/>.

Dershowitz, W., La Pointe, P., Doe, T., 2004. Advances in discrete fracture network modeling. In: *Proceedings of the US EPA/NGWA Fractured Rock Conference*, vol. 2004, pp. 882–894.

Dewez, T.J., Girardeau-Montaut, D., Allanic, C., Rohmer, J., 2016. Facets : A cloud-compare plugin to extract geological planes from unstructured 3d point clouds. *Int. Arch. Photogramme. Remote Sens. Spat. Inf. Sci. ISPRS Arch.* 41 (June), 799–804. <http://dx.doi.org/10.5194/isprsarchives-XLI-B5-799-2016>.

Ferrari, L., Orozco-Esquivel, T., Manea, V., Manea, M., 2012. The dynamic history of the Trans-Mexican Volcanic Belt and the Mexico subduction zone. *Tectonophysics* 522–523, 122–149. <http://dx.doi.org/10.1016/j.tecto.2011.09.018>.

Gallup, D.L., 2009. Production engineering in geothermal technology: A review. *Geothermics* 38 (3), 326–334. <http://dx.doi.org/10.1016/j.geothermics.2009.03.001>.

Gillespie, P., Howard, C., Walsh, J., Watterson, J., 1993. Measurement and characterisation of spatial distributions of fractures. *Tectonophysics* 226 (1–4), 113–141. [http://dx.doi.org/10.1016/0040-1951\(93\)90114-Y](http://dx.doi.org/10.1016/0040-1951(93)90114-Y).

- Golder Associates, 2019. FracMan®7.7. Copyright © 2018 Golder Associates. All rights reserved. URL: <http://www.golder.com>.
- Healy, D., Blenkinsop, T.G., Timms, N.E., Meredith, P.G., Mitchell, T.M., Cooke, M.L., 2015. Polymodal faulting: Time for a new angle on shear failure. *J. Struct. Geol.* 80, 57–71. <http://dx.doi.org/10.1016/j.jsg.2015.08.013>.
- Healy, D., Rizzo, R.E., Cornwell, D.G., Farrell, N.J., Watkins, H., Timms, N.E., Gomez-Rivas, E., Smith, M., 2017. FracPaQ: A MATLAB™ toolbox for the quantification of fracture patterns. *J. Struct. Geol.* 95, 1–16. <http://dx.doi.org/10.1016/j.jsg.2016.12.003>.
- ISRM, 1978. Suggested methods for the quantitative description of discontinuities in rock masses. *Int. J. Rock Mech. Min. Sci. Geomech. Abstr.* 16 (2), 22. [http://dx.doi.org/10.1016/0148-9062\(79\)91476-1](http://dx.doi.org/10.1016/0148-9062(79)91476-1).
- Jolie, E., Bruhn, D., Hernández, A.L., Liotta, D., Garduño-Monroy, H., Lelli, M., Hersir, G.P., Arango-Galván, C., Bonté, D., Calcagno, P., Deb, P., Clauser, C., Peters, E., Ochoa, A.F.H., Huenges, E., González Acevedo, Z.I., Kieling, K., Trumpy, E., Vargas, J., Carlos Gutiérrez-Negrín, L., Aragón-Aguilar, A., Halldórsdóttir, S., González Partida, E., Van Wees, J.-D., Angel, M., Montes, R., Didier, H., León, D., Team, G., 2018. GEMex – A Mexican-European research cooperation on development of superhot and engineered geothermal systems. In: *Proceedings Geothermal Reservoir Engineering Stanford University*, pp. 1–10.
- Lavenu, A.P., Lamarche, J., Salardon, R., Gallois, A., Marié, L., Gauthier, B.D., 2014. Relating background fractures to diagenesis and rock physical properties in a platform-slope transect. Example of the Maiella Mountain (central Italy). *Mar. Pet. Geol.* 51, 2–19. <http://dx.doi.org/10.1016/j.marpetgeo.2013.11.012>.
- Lei, Q., Latham, J.P., Tsang, C.F., 2017. The use of discrete fracture networks for modelling coupled geomechanical and hydrological behaviour of fractured rocks. *Comput. Geotech.* 85, 151–176. <http://dx.doi.org/10.1016/j.compgeo.2016.12.024>.
- Lepillier, B., Daniilidis, A., Doonechaly Gholizadeh, N., Bruna, P.-O., Kummerow, J., Bruhn, D., 2019. A fracture flow permeability and stress dependency simulation applied to multi-reservoirs, multi-production scenarios analysis. *Geotherm. Energy* 7 (1), <http://dx.doi.org/10.1186/s40517-019-0141-8>.
- Li, J.Z., Laubach, S.E., Gale, J.F., Marrett, R.A., 2018. Quantifying opening-mode fracture spatial organization in horizontal wellbore image logs, core and outcrop: Application to Upper Cretaceous Frontier Formation tight gas sandstones, USA. *J. Struct. Geol.* 108, 137–156. <http://dx.doi.org/10.1016/j.jsg.2017.07.005>.
- Li, Y., Zhang, Y., 2015. Quantitative estimation of joint roughness coefficient using statistical parameters. *Int. J. Rock Mech. Min. Sci.* 77, 27–35. <http://dx.doi.org/10.1016/j.ijrmms.2015.03.016>.
- Liu, X., Srinivasan, S., Wong, D., 2002. Geological characterization of naturally fractured reservoirs using multiple point geostatistics. In: *SPE/DOE Improved Oil Recovery Symposium*. Society of Petroleum Engineers, Tulsa, Oklahoma, p. 12. <http://dx.doi.org/10.2118/75246-MS>.
- López-Hernández, A., García-Estrada, G., Aguirre-Díaz, G., González-Partida, E., Palma-Guzmán, H., Quijano-León, J.L., 2009. Hydrothermal activity in the tulancingo-acoculco Caldera complex, central Mexico: Exploratory studies. *Geothermics* 38 (3), 279–293. <http://dx.doi.org/10.1016/j.geothermics.2009.05.001>.
- Lorenzo Pulido, C., Flores Armenta, M., Ramírez Silva, G., 2010. Characterization of the acoculco geothermal zone as a HDR system. *Grc Trans.* 34, 369–372.
- Manea, V.C., Manea, M., Ferrari, L., 2013. A geodynamical perspective on the subduction of Cocos and Rivera plates beneath Mexico and Central America. *Tectonophysics* 609 (January), 56–81. <http://dx.doi.org/10.1016/j.tecto.2012.12.039>.
- Markovaara-Koivisto, M., Laine, E., 2012. MATLAB script for analyzing and visualizing scanline data. *Comput. Geosci.* 40, 185–193. <http://dx.doi.org/10.1016/j.cageo.2011.07.010>.
- Mauldon, M., 1998. Estimating mean fracture trace length and density from observations in convex windows. *Rock Mech. Rock Eng.* 31 (4), 201–216. <http://dx.doi.org/10.1007/s006030050021>.
- Mauldon, M., Dunne, W.M., Rohrbaugh, M.B., 2001. Circular scanlines and circular windows: New tools for characterizing the geometry of fracture traces. *J. Struct. Geol.* 23 (2–3), 247–258. [http://dx.doi.org/10.1016/S0191-8141\(00\)00094-8](http://dx.doi.org/10.1016/S0191-8141(00)00094-8).
- Midland Valley, 2019. Move. ©Midland Valley Exploration Ltd 2019. URL: <https://www.mve.com/software>.
- Norini, G., Gropelli, G., Sulpizio, R., Carrasco-Núñez, G., Dávila-Harris, P., Pellicoli, C., Zucca, F., De Franco, R., 2015. Structural analysis and thermal remote sensing of the los humeros volcanic complex: Implications for volcano structure and geothermal exploration. *J. Volcanol. Geotherm. Res.* 301, 221–237. <http://dx.doi.org/10.1016/j.jvolgeores.2015.05.014>.
- Padilla, R.J., 2013. Gis project of the tectonic map of Mexico. AAPG datapages. URL: <http://www.datapages.com/gis-map-publishing-program/gis-open-files/geographic/tectonic-map-of-mexico-2013>.
- Peacock, D.C., Nixon, C.W., Rotevatn, A., Sanderson, D.J., Zuluaga, L.F., 2016. Glossary of fault and other fracture networks. *J. Struct. Geol.* 92 (September), 12–29. <http://dx.doi.org/10.1016/j.jsg.2016.09.008>.
- Priest, S.D., Hudson, J.A., 1981. Estimation of discontinuity spacing and trace length using scanline surveys. *Int. J. Rock Mech. Min. Sci. Geomech. Abstr.* 18 (3), 183–197. [http://dx.doi.org/10.1016/0148-9062\(81\)90973-6](http://dx.doi.org/10.1016/0148-9062(81)90973-6).
- Python Software Foundation, 2019. Python. Copyright ©2001–2018. Python Software Foundation. URL: <https://www.python.org/>.
- Schlumberger Limited, 2019. Petrel. © 2018 Schlumberger Limited. All rights reserved. URL: <https://www.software.slb.com/products/petrel/petrel-2018>.
- Servicio Geológico Mexicano, 1997. Carta Geológico-Minera Zacatlán E14-B14, Puebla, Esc. 1:50,000 Edition: 1. Servicio Geológico Mexicano E14-B14. URL: <http://www.gob.mx/sgm>.
- Servicio Geológico Mexicano, 2002. Carta Geológico-Minera Huauchinango F14-D83, Hidalgo y Puebla, Esc. 1:50,000 Edition: 1. Servicio Geológico Mexicano F14-D83. URL: <http://www.gob.mx/sgm>.
- Straubhaar, J., Renard, P., Mariethoz, G., Froidevaux, R., Besson, O., 2011. An improved parallel multiple-point algorithm using a list approach. *Math. Geosci.* 43 (3), 305–328. <http://dx.doi.org/10.1007/s11004-011-9328-7>.
- Surette, M.J., 2006. Quantifying Heterogeneity in Variably Fractured Rock Using a Hydrostructural Domain Approach (M.Sc. thesis). Simon Fraser University, British Columbia, Burnaby, p. 129.
- Tahmasebi, P., 2018. Handbook of Mathematical Geosciences, no. June. Springer International Publishing, http://dx.doi.org/10.1007/978-3-319-78999-6_30.
- Terzaghi, R.D., 1965. Sources of error in joint surveys. *Géotechnique* 15 (3), 287–304. <http://dx.doi.org/10.1680/geot.1965.15.3.287>.
- Tester, J.W., Anderson, B.J., Batchelor, A.S., Blackwell, D.D., DiPippo, R., 2006. The Future of Geothermal Energy - Impact of Enhanced Geothermal Systems (EGS) on the United States in the 21st Century. Massachusetts Institute of Technology, p. 358, URL: [www.1.eere.energy.gov/geothermal/pdfs/future_\(*\)_geo_\(*\)_energy.pdf](http://www.1.eere.energy.gov/geothermal/pdfs/future_(*)_geo_(*)_energy.pdf).
- The MathWorks Inc., 2019. MATLAB. © 1994–2019 The MathWorks, Inc. URL: <https://it.mathworks.com/>.
- Tse, R., Cruden, D.M., 1979. Estimating joint roughness coefficients. *Int. J. Rock Mech. Min. Sci. Geomech. Abstr.* 16 (5), 303–307. [http://dx.doi.org/10.1016/0148-9062\(79\)90241-9](http://dx.doi.org/10.1016/0148-9062(79)90241-9).
- Viggiano-Guerra, J.C., Armenta, M.F., Silva, G.R.R., 2011. Evolución del sistema geotérmico de Acoculco, Pue., México: Un estudio con base en estudios petrográficos del pozo EAC-2 y en otras consideraciones. *Geotermia* 24 (1), 14–24.
- Watkins, H., Bond, C.E., Healy, D., Butler, R.W., 2015. Appraisal of fracture sampling methods and a new workflow to characterise heterogeneous fracture networks at outcrop. *J. Struct. Geol.* 72, 67–82. <http://dx.doi.org/10.1016/j.jsg.2015.02.001>.
- Zeeb, C., Gomez-Rivas, E., Bons, P.D., Virgo, S., Blum, P., 2013. Fracture network evaluation program (FraNEP): A software for analyzing 2D fracture trace-line maps. *Comput. Geosci.* 60, 11–22. <http://dx.doi.org/10.1016/j.cageo.2013.04.027>.
- Zhang, L., Kang, Q., Chen, L., Yao, J., 2016. Simulation of flow in multi-scale porous media using the lattice Boltzmann method on quadtree grids. *Commun. Comput. Phys.* 19 (04), 998–1014. <http://dx.doi.org/10.4208/cicp.110315.190815a>.