

Nonlinear and dot-dependent Zeeman splitting in GaAs/AlGaAs quantum dot arrays

Michal, V. P.; Fujita, T.; Baart, T. A.; Danon, J.; Reichl, C.; Wegscheider, W.; Vandersypen, L. M.K.; Nazarov, Y. V.

DOI

[10.1103/PhysRevB.97.035301](https://doi.org/10.1103/PhysRevB.97.035301)

Publication date

2018

Document Version

Final published version

Published in

Physical Review X

Citation (APA)

Michal, V. P., Fujita, T., Baart, T. A., Danon, J., Reichl, C., Wegscheider, W., Vandersypen, L. M. K., & Nazarov, Y. V. (2018). Nonlinear and dot-dependent Zeeman splitting in GaAs/AlGaAs quantum dot arrays. *Physical Review X*, 9(3), Article 035301. <https://doi.org/10.1103/PhysRevB.97.035301>

Important note

To cite this publication, please use the final published version (if applicable).
Please check the document version above.

Copyright

Other than for strictly personal use, it is not permitted to download, forward or distribute the text or part of it, without the consent of the author(s) and/or copyright holder(s), unless the work is under an open content license such as Creative Commons.

Takedown policy

Please contact us and provide details if you believe this document breaches copyrights.
We will remove access to the work immediately and investigate your claim.

Nonlinear and dot-dependent Zeeman splitting in GaAs/AlGaAs quantum dot arrays

V. P. Michal,¹ T. Fujita,¹ T. A. Baart,¹ J. Danon,² C. Reichl,³ W. Wegscheider,³ L. M. K. Vandersypen,¹ and Y. V. Nazarov⁴

¹*QuTech and Kavli Institute of Nanoscience, TU Delft, 2600 GA Delft, The Netherlands*

²*Center for Quantum Spintronics, Department of Physics, Norwegian University of Science and Technology, NO-7491 Trondheim, Norway*

³*Solid State Physics Laboratory, ETH Zürich, 8093 Zürich, Switzerland*

⁴*Kavli Institute of Nanoscience, Delft University of Technology, Lorentzweg 1, NL-2628 CJ, Delft, The Netherlands*



(Received 26 September 2017; published 5 January 2018)

We study the Zeeman splitting in lateral quantum dots that are defined in GaAs-AlGaAs heterostructures by means of split gates. We demonstrate a nonlinear dependence of the splitting on magnetic field and its substantial variations from dot to dot and from heterostructure to heterostructure. These phenomena are important in the context of information processing since the tunability and dot-dependence of the Zeeman splitting allow for a selective manipulation of spins. We show that spin-orbit effects related to the GaAs band structure quantitatively explain the observed magnitude of the nonlinear dependence of the Zeeman splitting. Furthermore, spin-orbit effects result in a dependence of the Zeeman splitting on predominantly the out-of-plane quantum dot confinement energy. We also show that the variations of the confinement energy due to charge disorder in the heterostructure may explain the dependence of Zeeman splitting on the dot position. This position may be varied by changing the gate voltages, which leads to an electrically tunable Zeeman splitting.

DOI: [10.1103/PhysRevB.97.035301](https://doi.org/10.1103/PhysRevB.97.035301)

I. INTRODUCTION

The realization of quantum coherent devices is an important direction in nanoscience and underlies the fields of quantum computation, information and simulation [1–3]. The spin of an electron confined in a semiconductor quantum dot realizes an addressable and readable two-level system (qubit) with long coherence time [4,5]. Spin-orbit coupling (SOC) plays a major role in semiconductor-based devices, and understanding its details is important for the operation of spin qubits in these systems. In GaAs heterostructures, SOC makes possible manipulation of the spin state by time-dependent electric fields [6]. It also influences the level splitting of the qubit (Zeeman splitting). Usually the Zeeman splitting E_Z is almost linear in magnetic field B and can be characterized by an effective g factor:

$$|g_{\text{eff}}| = E_Z / \mu_B B, B \rightarrow 0, \quad (1)$$

where μ_B is the Bohr magneton. In GaAs, the bulk g factor for electron carriers is $g_G = -0.44$. In addition, the g factor in nanostructures is affected by details of electron confinement [8–12]. Deviations from the bulk GaAs g factor have been observed in various heterostructures and quantum-dot configurations, including dot-to-dot variations in quantum-dot arrays [6,7,12–17]. A nonlinear Zeeman splitting has also been observed, both for 2D electron gases [18] and quantum dots [14]. Apart from SOC, the observed Zeeman splitting can also be affected by dynamical nuclear polarization (see Ref. [19] for a review).

In this paper, we investigate the origin of the nonlinear and dot-dependent Zeeman splitting. We extract the Zeeman splitting from electric-dipole spin resonance (EDSR) data for a number of different quantum dots defined in AlGaAs/GaAs heterostructures (double, triple, and quadruple dot arrays) showing g factor inhomogeneities and g factor variations upon changing voltages. With a detailed analysis of the SOC in

GaAs, we demonstrate that the observed nonlinearity can be quantitatively explained by the interplay of SOC and vertical confinement, so that the splitting depends on the vertical confinement energy E_{z0} . The actual confinement energy depends on the position of the dot in the heterostructure owing to irregular placing of the donors and other sources of irregular electrostatic potential. We demonstrate that this is consistent with dot-to-dot variations of the Zeeman splitting as well as the dependence of the splitting on gate voltages. The understanding of the mechanism behind the dot-dependence and electrical tunability will permit efficient engineering of spin-based quantum coherent devices.

The paper is organized as follows. In Sec. II, we present the model that we use in the theoretical analysis of SOC effect. In Sec. III, we give the dependence of the Zeeman splitting on confinement energy, and the nonlinear Zeeman effect. In Sec. IV, we estimate the spatial variations in the splitting that can be expected from random placement of the donors. We describe experimental details in Sec. V. In Sec. VI, we compare experimental and theoretical results. The details of the theoretical calculations and the full EDSR data are presented in the appendices. We finally conclude with a summary of the results and perspectives.

II. MODEL

The effective mass Hamiltonian for the electron with SOC up to second order of $k \cdot p$ perturbation theory writes:

$$H_0 = \sum_{\alpha=x,y,z} \left(\frac{\hat{p}_\alpha^2}{2m} + \frac{g}{2} \mu_B \sigma_\alpha B_\alpha \right) + U(x, y, z). \quad (2)$$

Here B_α are the vector components of the applied magnetic field, σ_α the Pauli matrices, $\hat{p}_\alpha = p_\alpha + eA_\alpha(\mathbf{r})$ is the gauge-invariant momentum, $e > 0$ is the elementary charge, $\mu_B = \hbar e / 2m_0$ is the Bohr magneton, m_0 is the electron bare

TABLE I. Effective masses and bulk g factors of GaAs and $\text{Al}_{0.3}\text{Ga}_{0.7}\text{As}$ [20].

Parameter	GaAs	$\text{Al}_{0.3}\text{Ga}_{0.7}\text{As}$
m	$m_G = 0.067m_0$	$m_A = 0.090m_0$
g	$g_G = -0.44$	$g_A = 0.45$

mass, m, g are the medium-dependent electron effective mass and g factor, and $U(x, y, z)$ is the gate-defined confining potential. We choose our coordinate system such that the z axis corresponds to the heterostructure growth direction (crystal axis [001]) and the x axis ([100]) and y axis ([010]) define the heterostructure plane.

The confining potential consists of the triangular potential along the z direction and the gate-defined parabolic in-plane potential. Neglecting the disorder potential due to randomly distributed donors, dot potential energy for $z > 0$ (GaAs) reads

$$U(x, y, z) = \frac{1}{2}m_G\omega_0^2(x^2 + y^2) + e\mathcal{E}z. \quad (3)$$

Here $\mathcal{E} = en_0/\varepsilon_G\varepsilon_0$, $\varepsilon_G \approx 12.9$ being the dielectric constant of GaAs, ε_0 the vacuum permittivity, and n_0 the electron planar concentration in the heterostructure inversion layer. This expression for the electric field corresponds to the condition $\partial_z U_H(z) \rightarrow 0$ as $z \rightarrow \infty$ with $U_H(z)$ the Hartree potential in the presence of the 2D electron gas of density n_0 . On the other hand, $U(x, y, z) = \Delta \approx 300 \text{ meV}$ for $z < 0$ (AlGaAs). The system-specific parameters for the AlGaAs-GaAs heterostructure are given in Table I.

At zero magnetic field, the z component of the wave function is $\psi_{z,n}(z) = c_- \exp(z\sqrt{2m_A(\Delta - E_{z,n})}/\hbar)$ if $z < 0$ and $\psi_{z,n}(z) = c_+ \text{Ai}(z/z_0 - E_{z,n}/E_{z0})$ if $z > 0$, where Ai is the Airy function, and

$$E_{z0} = \frac{(\hbar e\mathcal{E})^{2/3}}{(2m_G)^{1/3}} = \frac{\hbar^2}{2m_G z_0^2}. \quad (4)$$

Boundary conditions $\psi_{z,n}(0-) = \psi_{z,n}(0+)$ and $\psi'_{z,n}(0-)/m_A = \psi'_{z,n}(0+)/m_G$ lead to energy levels $E_{z,n} = E_{z0}(|a_n| - \sqrt{m_A E_{z0}/m_G \Delta})$ in the regime $E_{z0}/\Delta \ll 1$, where a_n are the Airy function zeros ($n \geq 1$; for the ground state: $a_1 \approx -2.34$).

To take SOC into account, Eq. (2) should be supplemented with six other terms describing the spin splitting [21]:

$$H_1 = \sum_l H_1^{(l)}, \quad H_1^{(l)} = \gamma_l \sum_{\alpha=x,y,z} \sigma_\alpha \mathcal{K}_\alpha^{(l)*}, \quad (5)$$

that are derived up to fourth order in $k \cdot p$ perturbation theory. For in-plane magnetic field $\mathbf{B} = (B_x, B_y, 0)$, the relevant irreducible tensor components of the point group T_d read [21]:

$$\mathcal{K}^{(2)*} = \frac{1}{2\hbar^3} (\{\hat{p}_x, \hat{p}_y^2 - \hat{p}_z^2\}, \{\hat{p}_y, \hat{p}_z^2 - \hat{p}_x^2\}, \{\hat{p}_z, \hat{p}_x^2 - \hat{p}_y^2\}),$$

$$\mathcal{K}^{(3)*} = \frac{e}{\hbar^3} (\hat{p}_x^2 + \hat{p}_y^2 + \hat{p}_z^2)(B_x, B_y, 0),$$

$$\mathcal{K}^{(4)*} = \frac{e}{2\hbar^3} (\{\hat{p}_x, \hat{p}_y\}B_y, \{\hat{p}_y, \hat{p}_x\}B_x, \{\hat{p}_z, \hat{p}_x\}B_x + \{\hat{p}_z, \hat{p}_y\}B_y),$$

TABLE II. Spin-orbit coupling parameters of GaAs [20,21].

γ_2	γ_3	γ_4
$27.6 \text{ eV} \cdot \text{\AA}^3$	$493 \text{ eV} \cdot \text{\AA}^4$	$-433 \text{ eV} \cdot \text{\AA}^4$
γ_5	γ_6	γ_7
$58 \text{ eV} \cdot \text{\AA}^4$	5.5\AA^2	-5.2\AA^3

$$\mathcal{K}^{(5)*} = \frac{e}{\hbar^3} (\hat{p}_x^2 B_x, \hat{p}_y^2 B_y, 0),$$

$$\mathcal{K}^{(6)*} = \frac{e\mathcal{E}}{\hbar} (\hat{p}_y, -\hat{p}_x, 0),$$

$$\mathcal{K}^{(7)*} = \frac{e^2\mathcal{E}}{\hbar} (B_y, B_x, 0).$$

Here $\{a, b\} = ab + ba$ and $e\mathcal{E} = \partial_z U$ is the potential energy gradient along the crystal growth direction at the heterostructure interface [22]. The coefficients of the invariant decomposition for GaAs found in literature are given in Table II.

We choose the gauge where the potential vector components write $A_x = B_y(z - a)$, $A_y = -B_x(z - a)$ and the canonical momenta are

$$\hat{p}_x = p_x + eB_y \tilde{z}, \quad \hat{p}_y = p_y - eB_x \tilde{z}, \quad \hat{p}_z = p_z, \quad \tilde{z} = z - a.$$

Hence we solve the problem by the method of perturbation: the simply computable part is

$$H = \sum_\alpha (p_\alpha^2/2m + g\mu_B \sigma_\alpha B_\alpha/2) + U(x, y, z), \quad (6)$$

and the perturbation includes the influence of the magnetic field on the electron motion and SOC:

$$H' = e^2 B^2 \tilde{z}^2/2m + e\tilde{z}(p_x B_y - p_y B_x)/m + H_1. \quad (7)$$

Parameter a is fixed by the requirement of vanishing z -averaged group velocity at zero momentum in the x and y directions: $v_x, v_y \rightarrow 0$ as $p_x, p_y \rightarrow 0$. This corresponds to the condition at second order of perturbation theory:

$$\langle \tilde{z} \rangle + \frac{e^2 B^2}{m} \sum_{n \neq 1} \frac{\langle 1 | \tilde{z} | n \rangle \langle n | \tilde{z}^2 | 1 \rangle}{E_{z,1} - E_{z,n}} = 0, \quad (8)$$

where $|n\rangle$ is the eigenstate of the z -dependent part of H with energy $E_{z,n}$, and $\langle \cdot \rangle$ stands for averaging over the ground state ($n = 1$). Therefore up to second order in magnetic field a has the explicit expression:

$$a = \langle z \rangle - \frac{e^2 B^2}{m E_{z0}} \sum_{n \neq 1} \frac{\langle 1 | z | n \rangle \langle n | (z - \langle z \rangle)^2 | 1 \rangle}{|a_n| - |a_1|}. \quad (9)$$

Here $\langle z \rangle = \frac{2}{3}|a_1|z_0 \approx 1.56z_0$ and we numerically compute $\sum_{n \neq 1} \frac{\langle 1 | z | n \rangle \langle n | (z - \langle z \rangle)^2 | 1 \rangle}{|a_n| - |a_1|} \approx 0.16z_0^3$, giving $a/z_0 \approx 1.56 - 0.32\hbar^2\omega_L^2/E_{z0}^2$, where $\omega_L = eB/2m_G$ is the Larmor frequency in the GaAs conduction band.

III. THEORETICAL ANALYSIS: DEPENDENCE OF THE ZEEMAN SPLITTING ON CONFINEMENT ENERGY

Let us examine the Zeeman splitting corrections due to SOC of the confined electron. The details of the perturbative

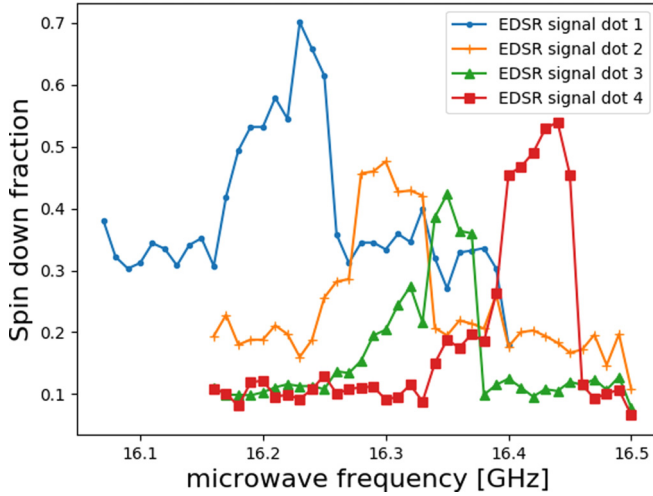


FIG. 1. Electric-dipole spin resonance response in a quadruple quantum dot, measured using adiabatic rapid passage to invert the spin, as in Ref. [30]. The spin-down probability as a function of the microwave carrier frequency is shown at magnetic field $B = 2.7$ T. The resonance frequency is taken to be the high-frequency edge of the resonance peak subtracted by the half-width of the frequency modulation applied for the spin inversion technique.

calculation are given in Appendix A. We concentrate on two special directions of the magnetic field $B_y = \pm B_x = \pm B/\sqrt{2}$, which correspond to the experimental configurations [13,15–17]. It turns out that the Zeeman splitting can be approximated with two terms that are linear and cubic in B :

$$E_Z = \mu_B B (|g_{\text{eff}}| - \kappa \hbar^2 \omega_L^2). \quad (10)$$

Both g_{eff} and κ depend on the magnetic field orientation. The corrections to g_{eff} come from three leading mechanisms. The first mechanism arises from the penetration of the electron wave function into the AlGaAs layer with effective g factor g_A and effective mass m_A , which both differ substantially from the values in GaAs [23]. The second mechanism is due to the spin splitting of the GaAs electron spectrum in the absence of inversion symmetry, that is cubic in electron momentum [24,25]. The third mechanism has been studied in Refs. [20,26] and is the momentum dependence of the electron g factor. With these corrections, g_{eff} can be expressed as

$$g_{\text{eff}} - g_G = g_{\text{eff}}^{(1)} + g_{\text{eff}}^{(2)} + g_{\text{eff}}^{(3)}, \quad (11)$$

$$g_{\text{eff}}^{(1)} = \frac{1}{2}(g_A - g_G)(m_A/m_G)^{1/2}(E_{z0}/\Delta)^{3/2}, \quad (12)$$

$$g_{\text{eff}}^{(2)} \approx \pm 0.97(E_{z0}/E^{(2)})^{1/2}, \quad (13)$$

$$g_{\text{eff}}^{(3)} \approx 1.56E_{z0}/E^{(3)}. \quad (14)$$

The numerical factors in the expressions for $g_{\text{eff}}^{(1)}$, $g_{\text{eff}}^{(2)}$, and $g_{\text{eff}}^{(3)}$ depend on the details of the wave function in the z direction. To come to concrete values, we took Airy functions corresponding to an unscreened confining electric field \mathcal{E} . In the above equations, E_{z0} enters the corrections in a ratio with the band structure energy scales: $\Delta \approx 0.3$ eV is the misalignment of the edges of the conduction bands of GaAs

and AlGaAs, $E^{(2)} \approx 1.2$ eV and $E^{(3)} \approx 0.4$ eV characterize the SOC. The \pm sign in the expression for $g_{\text{eff}}^{(2)}$ corresponds to $B_y = \pm B_x$. Let us note that the corrections are proportional to different powers of E_{z0} and could be expected to be of different orders of magnitude. However, for the E_{z0} of interest, $g_{\text{eff}}^{(2)}$ and $g_{\text{eff}}^{(3)}$ have comparable magnitudes while $g_{\text{eff}}^{(1)}$ is one order of magnitude smaller. In Eq. (14), we neglected corrections of relative magnitude $\hbar\omega_0/E_{z0} \ll 1$, where $\hbar\omega_0$ is the in-plane confinement energy (see Appendix A).

The nonlinear Zeeman effect is analyzed in a similar way. We give a compact expression:

$$\kappa \approx (\mp 0.26E_{z0}^{-3/2} + 4.0E_{z0}^{-1}) \text{ eV}^{-2}. \quad (15)$$

Here E_{z0} is expressed in eV. The first term is due to the cubic spin splitting of the electron spectrum due to the absence of inversion symmetry. The second term is contributed to by the g factor momentum dependence and Bychkov-Rashba spin splitting. Again, we keep here different powers of E_{z0} since both terms are of comparable magnitude for the E_{z0} of interest.

IV. THEORETICAL ANALYSIS: DOT-DEPENDENT ZEEMAN SPLITTING

We have seen in the previous section that the Zeeman splitting E_Z depends on the confining energy E_{z0} as a result of SOC. We note that E_{z0} is a function of the confining field \mathcal{E} . As a matter of fact, the confining field is not constant over the heterostructure but fluctuates from point to point (Appendix B). The reason for this is that dopants (Si atoms) in the doping layer are not uniformly distributed but their positions are random [27–29]. The fluctuations of the electric field exhibit a correlation length that is approximately equal to d , the separation between the doping layer and the 2D gas, and have a relative amplitude $\delta\mathcal{E}/\mathcal{E} \sim 1/2n_0^{1/2}d$, where n_0 is the 2D electron concentration.

In a typical GaAs quantum dot, the electron wave function extends over a diameter somewhat larger than d . The relative variation of the field \mathcal{E} over this state reads $\delta\mathcal{E}/\mathcal{E} = 1/4(\pi n_0)^{1/2}\ell$, with $\ell = \sqrt{\hbar/2m_G\omega_0}$. This results in a fluctuation of the effective g factor that is evaluated from Eqs. (11)–(14) and reads:

$$\begin{aligned} \delta g_{\text{eff}} &= \frac{\delta\mathcal{E}}{\mathcal{E}} \left(g_{\text{eff}}^{(1)} + \frac{1}{3}g_{\text{eff}}^{(2)} + \frac{2}{3}g_{\text{eff}}^{(3)} \right) \\ &= \frac{1}{4(\pi n_0)^{1/2}\ell} \left(g_{\text{eff}}^{(1)} + \frac{1}{3}g_{\text{eff}}^{(2)} + \frac{2}{3}g_{\text{eff}}^{(3)} \right). \end{aligned} \quad (16)$$

Changing the gate voltages displaces the dot and changes its shape, both of which affect the expectation value of \mathcal{E} and hence g_{eff} . We explain the gate tunability of E_Z by these effects. The maximum variation of g_{eff} by gate voltages occurs when a dot is displaced by a full correlation length of the electric field, in which case g_{eff} changes by the order of δg_{eff} .

V. EXPERIMENT

The Zeeman splitting energies are measured by searching for a resonant response in EDSR experiments. Figure 1 shows as an example a measurement from a quadruple quantum dot device (see Refs. [15,30] for details, the measurements on this

TABLE III. The table summarizes for different devices the measured values of the effective g factor g_{eff} (averaged over the ensemble of dots) relative to the bulk g factor, its standard deviation across the measured devices, the parameter κ that captures the nonlinear Zeeman effect obtained from fitting the field-dependent data to Eq. (2), the electron concentration n_0 in the two-dimensional electron system, and the orientation of the magnetic field.

Device	Ref.	$\overline{g_{\text{eff}}} - g_G$	Std. dev. of g_{eff}	κ [10^2 eV^{-2}]	n_0 [10^{-3} nm^{-2}]	Field orientation
A double dot GaAs/ $\text{Al}_{0.3}\text{Ga}_{0.7}\text{As}$	[13]	0.0793 (0.0006)	0.0011	3.0 (0.2)	1.2	[110]
B triple dot GaAs/ $\text{Al}_{0.25}\text{Ga}_{0.75}\text{As}$	[15,16]	0.005 (0.001)	0.002	3 (1)	2	[$\bar{1}\bar{1}0$]
C quadruple dot GaAs/ $\text{Al}_{0.307}\text{Ga}_{0.693}\text{As}$	[17]	0.0054 (0.0002)	0.0014	6.0 (0.1)	2.2	[110]

sample were reported in Ref. [17]). Data for this and two other devices are summarized in Table III. We see that the dot-to-dot variations of the g factor in the same sample are about 1% of the GaAs bulk value of -0.44 .

We plot in Fig. 2 E_Z for the four different dots as a function of the magnetic field. The solid lines correspond to fit with Eq. (10). We observe that the data collapse (lower part of Fig. 2) upon shifting g_{eff} for each dot individually, which means that there is no dot-to-dot dependence seen in κ . This is consistent with the fact that the possible variations of κ are of the same order of magnitude as the experimental uncertainties. In Fig. 4 of Appendix D, we show additional measurements for the double and triple dot devices.

We observe that tuning the dots by gate voltages changes the Zeeman splitting. Figure 3 shows resonant responses measured in dot 1 of the quadruple dot sample for a set of five different gate voltage conditions (see Appendices). We observe up to 300 MHz differences in the resonance frequency when changing the gate voltages up to 20 mV. A modest change in gate voltage can thus lead to a 2% change in g factor, indicating significant electrical tunability. The absence of hysteresis and the weak time-dependence of the splitting indicate that the observed shifts of the resonance lines are unlikely due to magnetic field variations caused by the background nuclear spins.

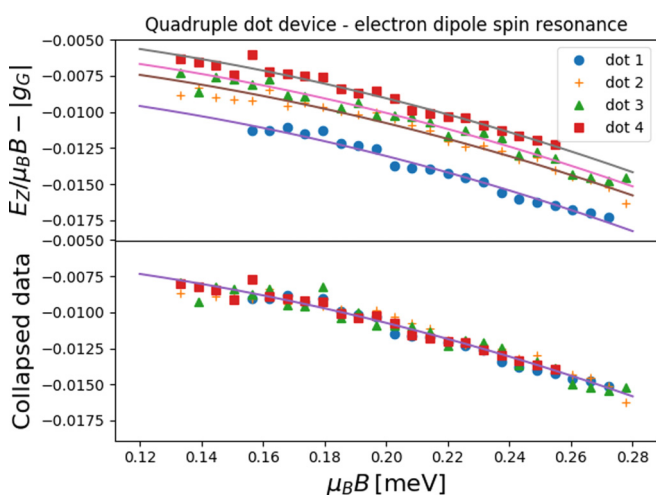


FIG. 2. Magnetic field dependence of the Zeeman splitting for the four dots in the quadruple dot device of Fig. 1. The top panel shows the bare data showing different Zeeman splittings for the four different dots. The bottom panel shows the collapsed data obtained by subtracting $(g_i - \bar{g})\mu_B B$ from the resonance energy E_Z of dot i , where \bar{g} is the mean g factor of the four dots.

VI. COMPARISON BETWEEN THEORY AND EXPERIMENT

Let us compare our predictions of Eqs. (11)–(16) with the measurement results of Table III. We estimate the confining energies for the structures A,B,C as $E_{z0} = 12, 16,$ and 18 meV, respectively. Depending on the magnetic field orientation, the contributions from the dominant terms $g_{\text{eff}}^{(2)}$ and $g_{\text{eff}}^{(3)}$ add up (B along [110]) or subtract from each other (B along [$\bar{1}\bar{1}0$]). Consistent with this prediction, the experimentally measured deviation from g_G is ten times bigger for device A than for device B and C. Furthermore, in this confinement energy range, both $g_{\text{eff}}^{(2)}$ and $g_{\text{eff}}^{(3)}$ are close to the maximum $g_{\text{eff}} - g_G \approx 0.08$ measured in structure A. For structure C we compute $g_{\text{eff}}^{(2)} \approx \pm 0.12$ and $g_{\text{eff}}^{(3)} \approx 0.07$, yielding a partial cancellation of their contributions. In the experiment, an even smaller residual value for $g_{\text{eff}} - g_G$ is observed (a similar observation applies to device B). We note that a very good agreement is obtained if $g_{\text{eff}}^{(2)}$ is roughly half the predicted value. Then, for the [$\bar{1}\bar{1}0$] orientation, the terms $g_{\text{eff}}^{(2)}$ and $g_{\text{eff}}^{(3)}$ almost exactly compensate each other, resulting in $g_{\text{eff}} - g_G$ that is one order of magnitude smaller than for the other direction. In this situation, the smaller term $g_{\text{eff}}^{(1)} \approx 0.007$ becomes significant. We note that the concrete values of

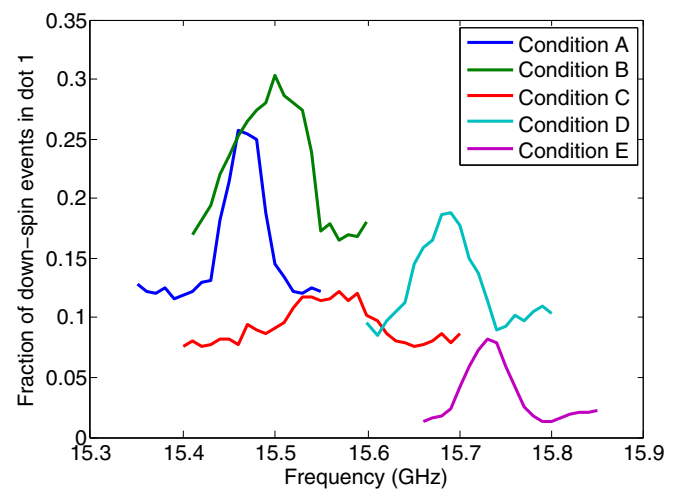


FIG. 3. EDSR measurement on dot 1 in the quadruple quantum dot sample (Table III) in a magnetic field of magnitude $B = 2.5$ T. Each condition corresponds to a gate voltage condition listed in Appendix. We observe up to 300 MHz difference in the resonance frequencies when tuning gate voltages by up to 20 mV. Resonance peaks are predominantly broadened by the 44 MHz frequency modulation applied for adiabatic spin inversion.

the numerical coefficients in Eqs. (12)–(14) do depend on the details of the confinement in the z direction. We use a simple model for confinement, which disregards the screening of the confining field by 2D carriers. Accounting for screening would generally reduce these coefficients.

Equation (16) gives g factor fluctuations $\delta g_{\text{eff}} \approx 10^{-3}$ and $\delta g_{\text{eff}} \approx 2 \times 10^{-3}$ for the structures B and C. This agrees with the experimental values $\delta g_{\text{eff}} \sim 10^{-3} - 2 \times 10^{-3}$. For the structure A, where the magnetic field orientation is different and g factor variations can be larger, we predict $\delta g_{\text{eff}} = 10^{-2}$. This is larger than the observed g factor difference for the two dots in this device, but, as noted before, δg_{eff} is the typical variation and it is possible that larger differences would be observed for a multidot device.

Finally, in agreement with the experimental observations, we predict the parameter of the nonlinear Zeeman effect κ to be positive for the two orientations of the magnetic field. For device B, Eq. (15) is evaluated as $\kappa \approx 3.5 \times 10^2 \text{ eV}^{-2}$ in excellent agreement with the measurement. For the other structures, the prediction for κ agrees within a factor of 2 to 3.

VII. CONCLUSION

We have studied the Zeeman splitting in lateral quantum dots defined by electrostatic gates in GaAs-AlGaAs heterostructures. We studied the nonlinear field dependence of the splitting, its spatial variations within a given structure, and its changes from structure to structure. We evaluated the SOC effects and found that they can explain the observed nonlinear Zeeman splitting and the dependence of splitting on confinement energy. As a consequence, the variations of confinement energy due to charge disorder in the heterostructure may explain the dependence of Zeeman splitting on the dot position. This position can be varied by changing the gate voltages and provide tunability of the Zeeman splitting. These observations are important for quantum information processing since the Zeeman splitting differences enable site-selective manipulation.

ACKNOWLEDGMENTS

This paper was partly supported by the Research Council of Norway through its Centres of Excellence funding scheme, Project No. 262633, QuSpin, the European Research Council (ERC-Synergy), the Intelligence Advanced Research Projects Activity (IARPA) Multi-Qubit Coherent Operations (MQCO) Program, the Japan Society for the Promotion of Science (JSPS) Postdoctoral Fellowship for Research Abroad, and the Swiss National Science Foundation. We also acknowledge helpful discussions with Mark Rudner and Bertrand Halperin.

APPENDIX A: EVALUATION OF ZEEMAN SPLITTING CORRECTIONS

The first mechanism of the g factor deviation with respect to the GaAs bulk value comes from averaging g in Eq. (2) for the ground state wave function, taking into account the wave-function penetration in the AlGaAs layer. Because the g factors of the two materials have opposite signs, one may expect a significant effect. We find that the averaged g factor

reads

$$\langle g \rangle = g_G + \frac{1}{2}(g_A - g_G)(m_A/m_G)^{1/2}(E_{z0}/\Delta)^{3/2}. \quad (\text{A1})$$

The higher-order correction to the effective g factor that is quadratic in B is of the order $(\mu_B B/E_{z0})^2(E_{z0}/\Delta)^{7/2}$.

The second mechanism, arising from bulk inversion asymmetry [term (2) in Eq. (5), Dresselhaus spin-orbit effect] leads to a dependence of the Zeeman splitting on the in-plane field orientation [24,25]. Assuming $E_{z0} \gg \hbar\omega_0$ the energy correction at first order of perturbation theory is

$$\langle H_1^{(2)} \rangle = -\frac{\gamma_2}{\hbar^3} e B_y \sigma_x (\langle p_z \tilde{z} p_z \rangle - e^2 B_x^2 \langle \tilde{z}^3 \rangle) + (x \leftrightarrow y). \quad (\text{A2})$$

We compute $\langle p_z \tilde{z} p_z \rangle = (\hbar^2/z_0)(-4a_1^2/45 + C\hbar^2\omega_L^2/E_{z0}^2)$, with $4a_1^2/45 \approx 0.49$, $C \approx 0.25$, and $(z - \langle z \rangle)^3 \approx 0.21z_0^3$, leading to

$$\langle H_1^{(2)} \rangle \approx (2m_0\gamma_2/\hbar^2 z_0)(0.49 - 0.25\hbar^2\omega_L^2/E_{z0}^2 + 0.21z_0^4 e^2 B_x^2/\hbar^2) \mu_B B_y \sigma_x + (x \leftrightarrow y). \quad (\text{A3})$$

Defining $E^{(2)} = \hbar^6/8m_0^2 m_G \gamma_2^2 \approx 1.2 \text{ eV}$, this becomes in the special case $B_x = \pm B_y$:

$$\langle H_1^{(2)} \rangle \approx \left(\frac{E_{z0}}{E^{(2)}} \right)^{1/2} \left(0.49 - 0.14 \frac{\hbar^2\omega_L^2}{E_{z0}^2} \right) \mu_B (B_y \sigma_x + B_x \sigma_y). \quad (\text{A4})$$

The second-order correction in H' of third power in magnetic field is

$$\delta \langle H_1^{(2)} \rangle = -\frac{e^3 B^2 \gamma_2}{\hbar^3 m} \sum_{n \neq 1} \frac{\langle 1|\tilde{z}^2|n\rangle \langle n|p_z \tilde{z} p_z|1\rangle}{E_{z,1} - E_{z,n}} (B_y \sigma_x + B_x \sigma_y) \approx 0.008 \left(\frac{E_{z0}}{E^{(2)}} \right)^{1/2} \frac{\hbar^2\omega_L^2}{E_{z0}^2} \mu_B (B_y \sigma_x + B_x \sigma_y). \quad (\text{A5})$$

The third mechanism, term Eqs. (3)–(5) appear at fourth order in $k \cdot p$ perturbation theory [20]. To first order in H' and in the regime $E_{z0} \gg \hbar\omega_0$, term Eq. (3) evaluates as

$$\langle H_1^{(3)} \rangle = \frac{e\gamma_3}{\hbar^3} \left(\frac{|a_1|\hbar^2}{3z_0^2} + \frac{4}{45} a_1^2 z_0^2 e^2 B^2 \right) (B_x \sigma_x + B_y \sigma_y) \approx \frac{E_{z0}}{E^{(3)}} \left(0.78 + 0.49 \frac{\hbar^2\omega_L^2}{E_{z0}^2} \right) \mu_B (B_x \sigma_x + B_y \sigma_y), \quad (\text{A6})$$

with $E^{(3)} = \hbar^4/4m_0 m_G \gamma_3 \approx 0.43 \text{ eV}$. Taking into account the in-plane confinement energy leads to a correction to Zeeman splitting equal to $\hbar\omega_0/E^{(3)}$, negligible when $\hbar\omega_0/E_{z0} \ll 1$. The second-order correction is

$$\delta \langle H_1^{(3)} \rangle = \frac{e^3 B^2 \gamma_3}{\hbar^3 m} \sum_{n \neq 1} \frac{\langle 1|\tilde{z}^2|n\rangle \langle n|p_z^2|1\rangle}{E_{z,1} - E_{z,n}} (B_x \sigma_x + B_y \sigma_y) \approx 0.32 \frac{\hbar^2\omega_L^2}{E^{(3)} E_{z0}} \mu_B (B_x \sigma_x + B_y \sigma_y). \quad (\text{A7})$$

Term Eq. (4) develops as ($B_x = \pm B_y$):

$$\langle H_1^{(4)} \rangle = -\frac{e^3 \gamma_4}{\hbar^3} \langle \tilde{z}^2 \rangle B_y^2 B_x \sigma_x + (x \leftrightarrow y) \approx 0.24 \frac{\hbar^2\omega_L^2}{E^{(4)} E_{z0}} \mu_B (B_x \sigma_x + B_y \sigma_y), \quad (\text{A8})$$

with $E^{(4)} = \hbar^4/4m_0m_G|\gamma_4| \approx 0.5$ eV, and term Eq. (5) as:

$$\begin{aligned} \langle H_1^{(5)} \rangle &= \frac{e^3\gamma_5}{\hbar^3} (\tilde{z}^2) B_y^2 B_x \sigma_x + (x \leftrightarrow y) \\ &\approx 0.24 \frac{\hbar^2 \omega_L^2}{E^{(5)} E_{z0}} \mu_B (B_x \sigma_x + B_y \sigma_y), \end{aligned} \quad (\text{A9})$$

with $E^{(5)} = \hbar^4/4m_0m_G\gamma_5 \approx 3.7$ eV.

Moreover, structural inversion asymmetry induces an interaction Eq. (6) (Bychkov-Rashba effect), which leads to

$$\begin{aligned} \langle H_1^{(6)} \rangle &= -\frac{\gamma_6}{\hbar} e^2 (\mathcal{E}\tilde{z}) (B_x \sigma_x + B_y \sigma_y) \\ &\approx -0.32 \frac{\hbar^2 \omega_L^2}{E^{(6)} E_{z0}} \mu_B (B_x \sigma_x + B_y \sigma_y), \end{aligned} \quad (\text{A10})$$

with $E^{(6)} = \hbar^2/2m_0\gamma_6 \approx 0.73$ eV. The last invariant Eq. (7) gives

$$\langle H_1^{(7)} \rangle = -\left(\frac{E_{z0}}{E^{(7)}}\right)^{3/2} \mu_B (B_y \sigma_x + B_x \sigma_y), \quad (\text{A11})$$

where $E^{(7)} = \hbar^2/(2m_0|\gamma_7|)^{2/3}(2m_G)^{1/3} \approx 3.13$ eV. This term can therefore be neglected.

As a result, the model predicts a Zeeman energy splitting of the form

$$E_Z = \mu_B B (|g_{\text{eff}}| - \kappa \hbar^2 \omega_L^2). \quad (\text{A12})$$

The effective g factor can be written as

$$g_{\text{eff}} - g_G = g_{\text{eff}}^{(1)} + g_{\text{eff}}^{(2)} + g_{\text{eff}}^{(3)}, \quad (\text{A13})$$

where corrections $g_{\text{eff}}^{(1)}$, $g_{\text{eff}}^{(2)}$, and $g_{\text{eff}}^{(3)}$ correspond to wavefunction penetration in the AlGaAs material, Dresselhaus bulk inversion asymmetry SOC, and fourth order in momentum dispersion respectively, with expressions

$$g_{\text{eff}}^{(1)} = \frac{1}{2} (g_A - g_G) (m_A/m_G)^{1/2} (E_{z0}/\Delta)^{3/2}, \quad (\text{A14})$$

$$g_{\text{eff}}^{(2)} = \pm \frac{8a_1^2}{45} (E_{z0}/E^{(2)})^{1/2}, \quad (\text{A15})$$

$$g_{\text{eff}}^{(3)} = \frac{2|a_1|}{3} E_{z0}/E^{(3)}. \quad (\text{A16})$$

In $g_{\text{eff}}^{(2)}$, the positive sign corresponds to $B_x = B_y$ and the negative sign to $B_x = -B_y$. When E_{z0} is expressed in eV this becomes

$$g_{\text{eff}} - g_G \approx 3.1 E_{z0}^{3/2} \pm 0.89 E_{z0}^{1/2} + 3.6 E_{z0}, \quad (\text{A17})$$

and, in addition, the nonlinear Zeeman effect parameter evaluates to

$$\kappa \approx (\mp 0.26 E_{z0}^{-3/2} + 4.0 E_{z0}^{-1}) \text{eV}^{-2}. \quad (\text{A18})$$

APPENDIX B: FLUCTUATIONS OF THE ELECTRIC FIELD

Electrostatic potential fluctuations due to randomly distributed donors at distance d from the doping plane read

$$\delta\varphi(\mathbf{r}, d) = -\frac{e}{4\pi\epsilon_0\epsilon} \int d^2\mathbf{r}' \frac{\delta n(\mathbf{r}')}{\sqrt{|\mathbf{r} - \mathbf{r}'|^2 + d^2}}, \quad (\text{B1})$$

where \mathbf{r} is the position vector in the heterostructure plane, $\delta n(\mathbf{r}) = n(\mathbf{r}) - n_0$ is the donor density fluctuation in the doping plane with short-range correlations [31]

$$\overline{\delta n(\mathbf{r})\delta n(\mathbf{r}')} = n_0 \delta(\mathbf{r} - \mathbf{r}'), \quad (\text{B2})$$

n_0 being the mean concentration of the 2D electron system, and overlining represents averaging over disorder realizations. It is taken into account the screening of dopant charges by negatively charged electrons. Therefore, we take n_0 as the effective density of donors. Computing the derivative of $\delta\varphi(\mathbf{r}, d)$ with respect to d leads to the electric field fluctuation

$$\delta\mathcal{E}(\mathbf{r}, d) = \frac{ed}{4\pi\epsilon_0\epsilon} \int d^2\mathbf{r}' \frac{\delta n(\mathbf{r}')}{(|\mathbf{r} - \mathbf{r}'|^2 + d^2)^{3/2}}. \quad (\text{B3})$$

The correlator evaluates as

$$\overline{\delta\mathcal{E}(\mathbf{r}_1, d)\delta\mathcal{E}(\mathbf{r}_2, d)} = \left(\frac{e}{2\epsilon_0\epsilon}\right)^2 n_0 \tilde{\delta}(\mathbf{r}_1, \mathbf{r}_2), \quad (\text{B4})$$

with

$$\begin{aligned} \tilde{\delta}(\mathbf{r}_1, \mathbf{r}_2) &= \frac{d^2}{4\pi^2} \int dx dy \frac{1}{((x_1 - x)^2 + (y_1 - y)^2 + d^2)^{3/2}} \\ &\times \frac{1}{((x_2 - x)^2 + (y_2 - y)^2 + d^2)^{3/2}}. \end{aligned} \quad (\text{B5})$$

TABLE IV. Extracted resonance frequencies of dot 1 for five different gate voltage conditions (before subtraction of 22 MHz, which comes from the adiabatic inversion method). Conditions are ordered according to the frequency values, with maximum difference of 300 MHz between conditions A and E. We give the gate voltages that differ between the measurements. The accuracy of the resonance frequency is ± 20 MHz, which includes ± 5 MHz from the measurement resolution and ± 15 MHz from the expected random nuclear spin distributions.

Quantity/Parameter	Mean	Tuning A	Tuning B	Tuning C	Tuning D	Tuning E
Resonance frequency [GHz]	15.624	-0.144	-0.084	-0.024	+0.096	+0.156
V_{D1} [mV]	-395.0	+0.0	-15.0	+5.0	+5.0	+5.0
V_{D2} [mV]	-477.0	-3.0	+2.0	-3.0	+2.0	+2.0
V_{D3} [mV]	-260.0	-1.0	-1.0	-6.0	+4.0	+4.0
V_{P1} [mV]	257.0	-1.6	+14.9	-4.9	-5.2	-3.2
V_{P2} [mV]	75.8	+2.3	+2.1	-1.2	-1.6	-1.6
V_{P3} [mV]	-92.1	+2.9	+1.9	+8.5	-6.6	-6.6
V_{P4} [mV]	33.7	+6.6	-2.9	+3.9	-3.8	-4.0
V_{SD1b} [mV]	-246.9	-0.6	+0.4	-0.6	+0.4	+0.4
V_{SD2b} [mV]	-31.4	-2.6	+1.4	-3.6	+3.4	+1.4

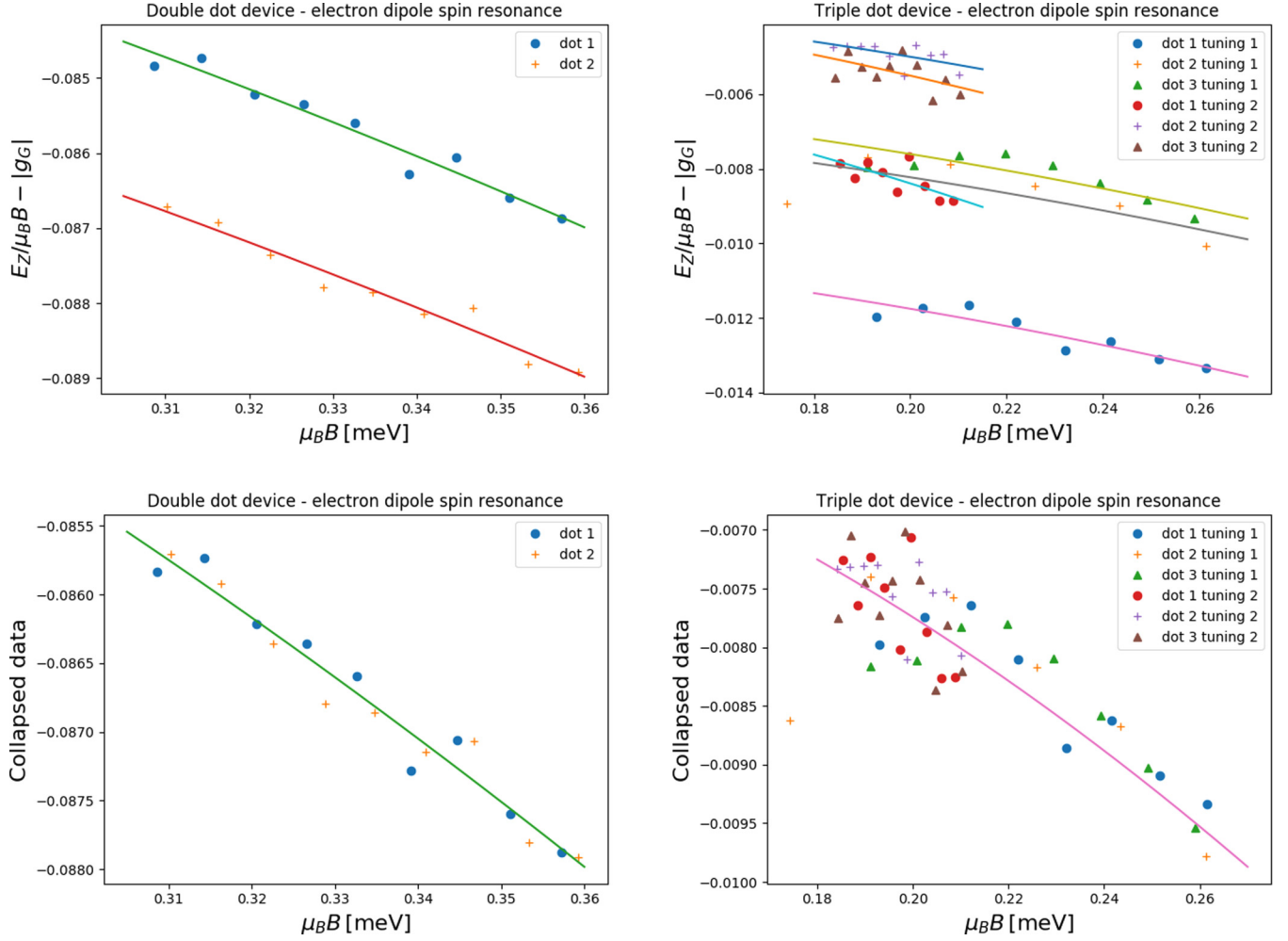


FIG. 4. Experimental data for the double- and triple-dot devices. The bare data are shown on the top and the collapsed data are on the bottom. Data collapse is obtained as in Fig. 2 of the main text, where g factors for the different dots are shifted by a constant value.

Here $x_{1/2}$, $y_{1/2}$ are the coordinates of $\mathbf{r}_{1/2}$. $\tilde{\delta}(\mathbf{r}_1, \mathbf{r}_2)$ satisfies the properties $\int d^2\mathbf{r}_1 \tilde{\delta}(\mathbf{r}_1, \mathbf{r}_2) = 1$, $\tilde{\delta}(\mathbf{r}_1, \mathbf{r}_2) \rightarrow 0$ as $d \rightarrow 0$ if $|\mathbf{r}_1 - \mathbf{r}_2| \neq 0$ and $\tilde{\delta}(\mathbf{r}_1, \mathbf{r}_2) \rightarrow \infty$ as $d \rightarrow 0$ if $|\mathbf{r}_1 - \mathbf{r}_2| = 0$. So it realizes the Dirac delta function when d is the smallest length scale.

Let us consider the quantum mechanical average

$$\langle \delta\mathcal{E} \rangle = \int d^2\mathbf{r} \delta\mathcal{E}(\mathbf{r}, d) \psi(\mathbf{r})^2, \quad (\text{B6})$$

$\psi(\mathbf{r}) = \exp(-|\mathbf{r}|^2/4\ell^2)/\sqrt{2\pi}\ell$ being the ground state wave function with characteristic length $\ell = \sqrt{\hbar/2m_G\omega_0}$. We obtain the typical magnitude of the electric field fluctuation:

$$\overline{\langle \delta\mathcal{E} \rangle^2} = \left(\frac{e}{2\epsilon_0\epsilon} \right)^2 n_0 \int d^2\mathbf{r} \psi(\mathbf{r})^4 = \left(\frac{en_0^{1/2}}{4\sqrt{\pi}\epsilon_0\epsilon\ell} \right)^2. \quad (\text{B7})$$

APPENDIX C: SUMMARY OF ELECTROSTATIC GATE TUNINGS FOR THE QUADRUPLE DOT DEVICE

Values of the resonance frequencies for dot 1 and voltages applied to electrostatic gates in the quadruple dot device are given in Table IV for different tuning configurations. This

corresponds to the resonance lines shown in Fig. 3 of the main text.

APPENDIX D: EDSR DATA FOR DIFFERENT SETUPS

In Fig. 4 we show the plots of EDSR data collapse obtained similarly as in Fig. 2. The fitted parameters, uncertainties, and dot-to-dot fluctuations are summarized in Table I of the main text.

APPENDIX E: TEMPORAL VARIATION IN RESONANCE FREQUENCY

Figure 5 shows measurements where the resonance frequency of the spin in each dot changes with time while the microwave excitation is continuously measured. The total measurement times were on the order of hours and each frequency sweep was on the order of minutes. Although Figs. 5(d) and 5(e) indicated a monotonic frequency shift, the EDSR measurements in the main text were taken with only a few sweeps. Therefore, we expect only a MHz order shift on the resonance frequency, and, consequently, these temporal shifts will not explain the gate voltage nor the dot dependent

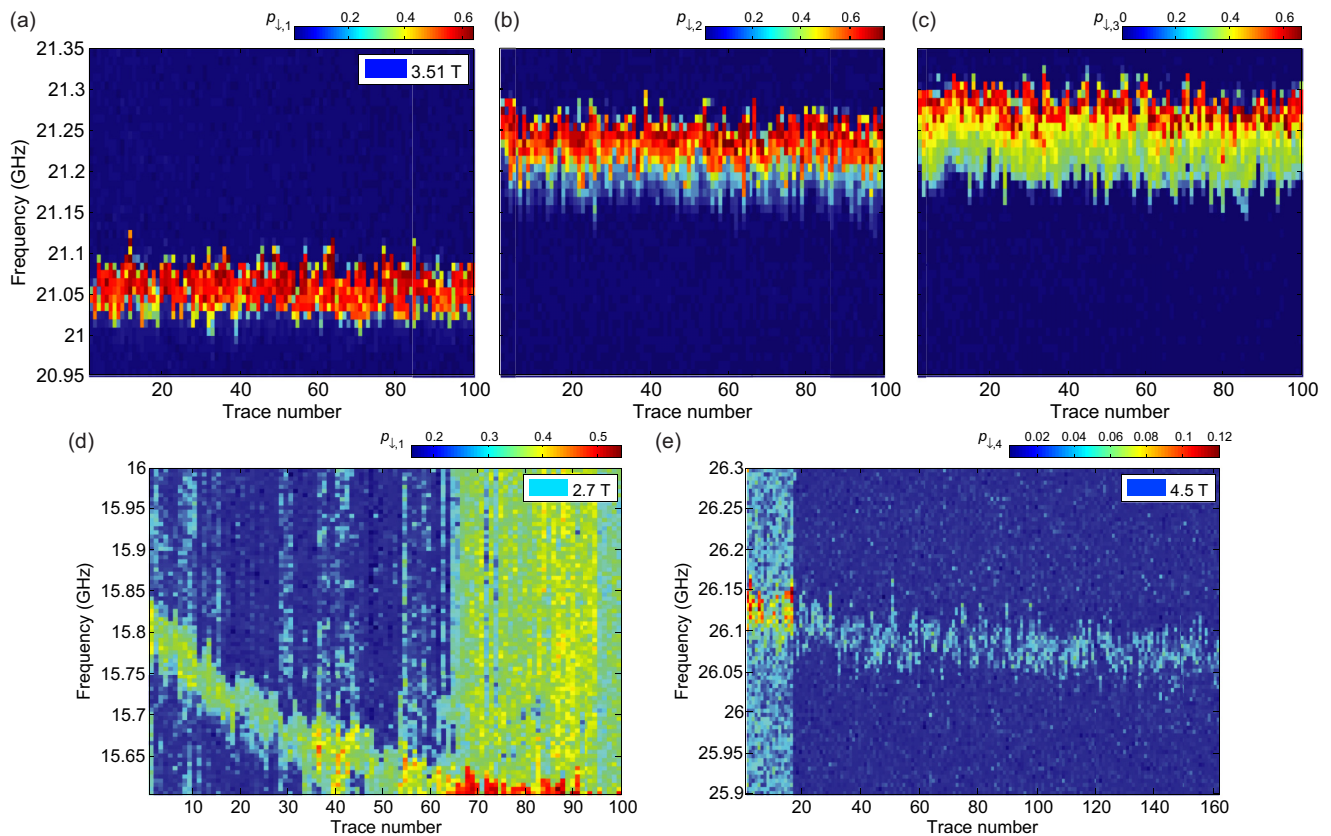


FIG. 5. (a)–(e) Continuously measured resonance frequencies showing time dependence. Microwave resonance conditions give the Zeeman splitting. The frequency is swept from high to low values for each case. (a)–(c) Measured resonance on a triple quantum dot as in Ref. [15]. The total measurement time is 12 h. (d), (e) Measurement on a quadruple quantum dot as in Ref. [17]. (d) Down spin fraction of dot 1 is measured at $B = 2.7$ T. Total measurement time is 8.5 h, where a total shift of 200 MHz is observed. (e) Measurement on dot 4 at 4.5 T. Total measurement time is 22.8 h.

frequency shift shown in the main text. Additionally, there are smaller frequency fluctuations (about 5 MHz) on top of each sweep.

These slow and fast frequency variations presumably originate from the interaction with nuclear spins. The slower

shift in Figs. 5(d) and 5(e) could be due to dynamic-nuclear polarization [19] similarly as in Ref. [32]. The faster variation matches the observations of an electron spin interacting with a random distribution of nuclear spins [33,34].

-
- [1] M. H. Devoret and R. J. Schoelkopf, *Science* **339**, 1169 (2013).
 [2] R. Hanson, L. P. Kouwenhoven, J. R. Petta, S. Tarucha, and L. M. K. Vandersypen, *Rev. Mod. Phys.* **79**, 1217 (2007).
 [3] R. Hanson and D. D. Awschalom, *Nature* **453**, 1043 (2008).
 [4] M. Veldhorst, C. H. Yang, J. C. C. Hwang, W. Huang, J. P. Dehollain, J. T. Muhonen, S. Simmons, A. Laucht, F. E. Hudson, K. M. Itoh, A. Morello, and A. S. Dzurak, *Nature* **526**, 410 (2015).
 [5] F. K. Malinowski, F. Martins, P. D. Nissen, E. Barnes, Ł. Cywiński, M. S. Rudner, S. Fallahi, G. C. Gardner, M. J. Manfra, C. M. Marcus, and F. Kuemmeth, *Nat. Nanotechnol.* **12**, 16 (2017).
 [6] K. C. Nowack, F. H. L. Koppens, Yu. V. Nazarov, and L. M. K. Vandersypen, *Science* **318**, 1430 (2007).
 [7] F. H. Koppens, C. Buizert, K. J. Tielrooij, I. T. Vink, K. C. Nowack, T. Meunier, L. P. Kouwenhoven, and L. M. K. Vandersypen, *Nature* **442**, 766 (2006).
 [8] G. Allison, T. Fujita, K. Morimoto, S. Teraoka, M. Larsson, H. Kiyama, A. Oiwa, S. Haffouz, D. G. Austing, A. Ludwig, A. D. Wieck, and S. Tarucha, *Phys. Rev. B* **90**, 235310 (2014).
 [9] A. Kogan, S. Amasha, D. Goldhaber-Gordon, G. Granger, M. A. Kastner, and H. Shtrikman, *Phys. Rev. Lett.* **93**, 166602 (2004).
 [10] R. M. Potok, J. A. Folk, C. M. Marcus, V. Umansky, M. Hanson, and A. C. Gossard, *Phys. Rev. Lett.* **91**, 016802 (2003).
 [11] T. Nakajima, M. R. Delbecq, T. Otsuka, S. Amaha, J. Yoneda, A. Noiri, K. Takeda, G. Allison, A. Ludwig, A. D. Wieck, and S. Tarucha, *arXiv:1604.02232*.
 [12] A. Noiri, J. Yoneda, T. Nakajima, T. Otsuka, M. R. Delbecq, K. Takeda, S. Amaha, G. Allison, A. Ludwig, A. D. Wieck, and S. Tarucha, *Appl. Phys. Lett.* **108**, 153101 (2016).
 [13] M. Shafiei, Ph.D. thesis, Technische Universiteit, Delft, 2013.
 [14] R. Hanson, B. Witkamp, L. M. K. Vandersypen, L. H. W. van Bevern, J. M. Elzerman, and L. P. Kouwenhoven, *Phys. Rev. Lett.* **91**, 196802 (2003).

- [15] T. A. Baart, T. Fujita, C. Reichl, W. Wegscheider, and L. M. K. Vandersypen, *Nat. Nano.* **11**, 330 (2016).
- [16] T. A. Baart, T. Fujita, C. Reichl, W. Wegscheider, and L. M. K. Vandersypen, *Nat. Nano.* **12**, 26 (2017).
- [17] T. Fujita, T. A. Baart, C. Reichl, W. Wegscheider, and L. M. K. Vandersypen, *NPJ Quantum Inf.* **3**, 22 (2017).
- [18] M. Dobers, K. v. Klitzing, and G. Weimann, *Phys. Rev. B* **38**, 5453 (1988).
- [19] E. A. Chekhovich, M. N. Makhonin, A. I. Tartakovskii, A. Yacoby, H. Bluhm, K. C. Nowack, and L. M. K. Vandersypen, *Nat. Mater.* **12**, 494 (2013).
- [20] M. Braun and U. Rössler, *J. Phys. C: Solid State Phys.* **18**, 3365 (1985); G. Lommer, F. Malcher, and U. Rössler, *Phys. Rev. B* **32**, 6965 (1985); *Superlattices Microstruct.* **2**, 273 (1986).
- [21] R. Winkler, *Spin Orbit Coupling Effects in Two-Dimensional Electron and Hole Systems* (Springer, Berlin, Heidelberg, 2003).
- [22] Rigorously the electric field that appears in the term Eq. (6) is the effective electric field acting in the valence band [21]. Taking this into account somewhat changes the contribution of this term to the Zeeman splitting but does not significantly change the results.
- [23] G. Salis, Y. Kato, K. Ensslin, D. C. Driscoll, A. C. Gossard, and D. D. Awschalom, *Nature* **414**, 619 (2001).
- [24] V. K. Kalevich and V. L. Korenev, *JETP Lett.* **57**, 571 (1993).
- [25] V. I. Fal'ko, B. L. Altshuler, and O. Tsyplatyev, *Phys. Rev. Lett.* **95**, 076603 (2005).
- [26] E. L. Ivchenko and A. A. Kiselev, *Soviet Phys. Semicond.* **26**, 827 (1992).
- [27] B. Grandidier, D. Stiévenard, J. P. Nys, and X. Wallart, *Appl. Phys. Lett.* **72**, 2454 (1998).
- [28] N. S. Averkiev, A. M. Monakhov, A. Shik, P. M. Koenraad, and J. H. Wolter, *Phys. Rev. B* **61**, 3033 (2000).
- [29] P. Barthelemy and L. M. K. Vandersypen, *Ann. Phys.* **525**, 808 (2013).
- [30] M. Shafiei, K. C. Nowack, C. Reichl, W. Wegscheider, and L. M. K. Vandersypen, *Phys. Rev. Lett.* **110**, 107601 (2013).
- [31] The calculation based on the short-range correlation of the local density of dopants remains valid in the regime where the correlation length of the random dopant density is smaller than the distance d .
- [32] I. T. Vink, K. C. Nowack, F. H. L. Koppens, J. Danon, Y. V. Nazarov, and L. M. K. Vandersypen, *Nat. Phys.* **5**, 764 (2009).
- [33] H. Bluhm, S. Foletti, D. Mahalu, V. Umansky, and A. Yacoby, *Phys. Rev. Lett.* **105**, 216803 (2010).
- [34] M. R. Delbecq, T. Nakajima, P. Stano, T. Otsuka, S. Amaha, J. Yoneda, K. Takeda, G. Allison, A. Ludwig, A. D. Wieck, and S. Tarucha, *Phys. Rev. Lett.* **116**, 046802 (2016).