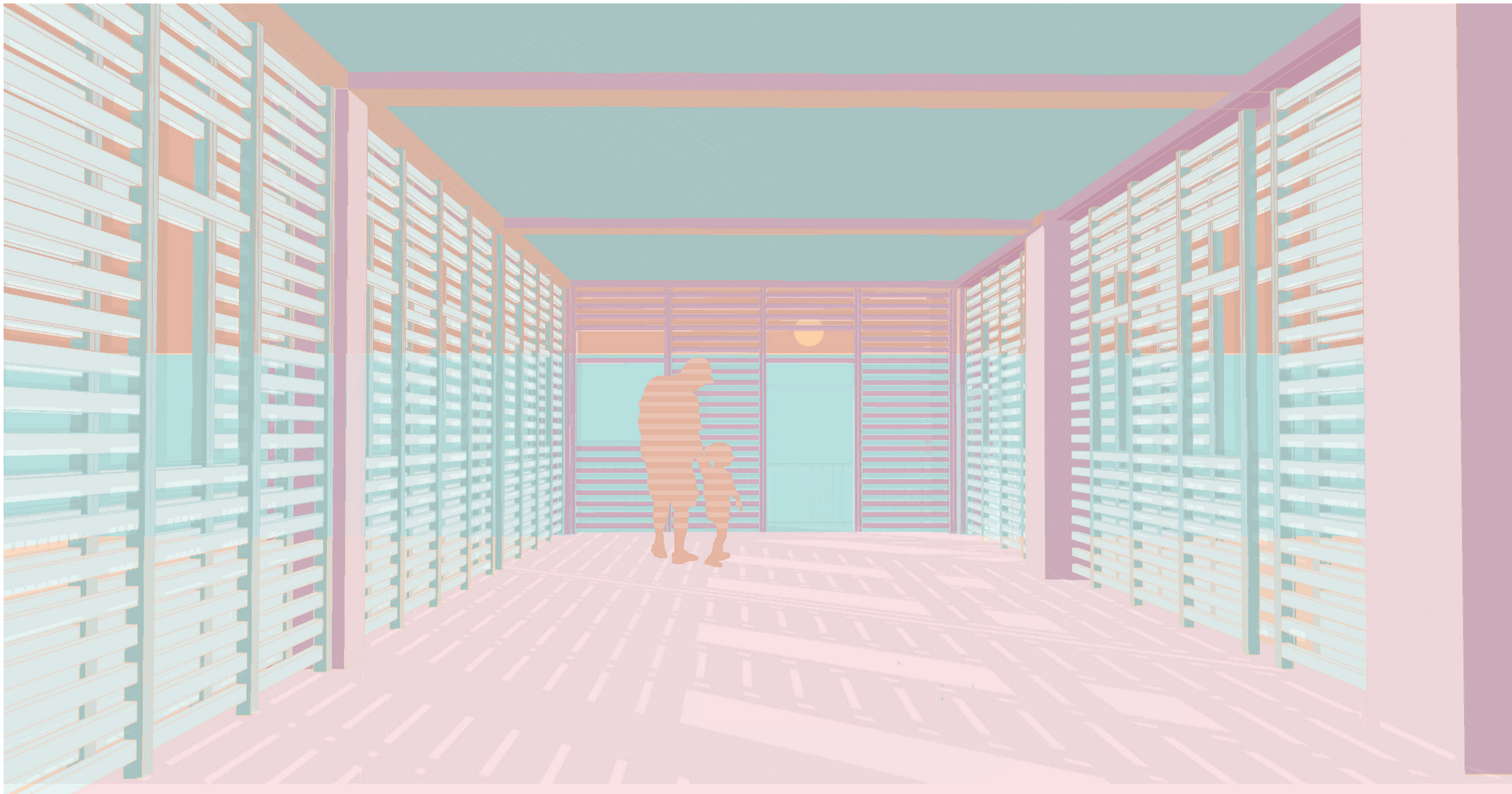
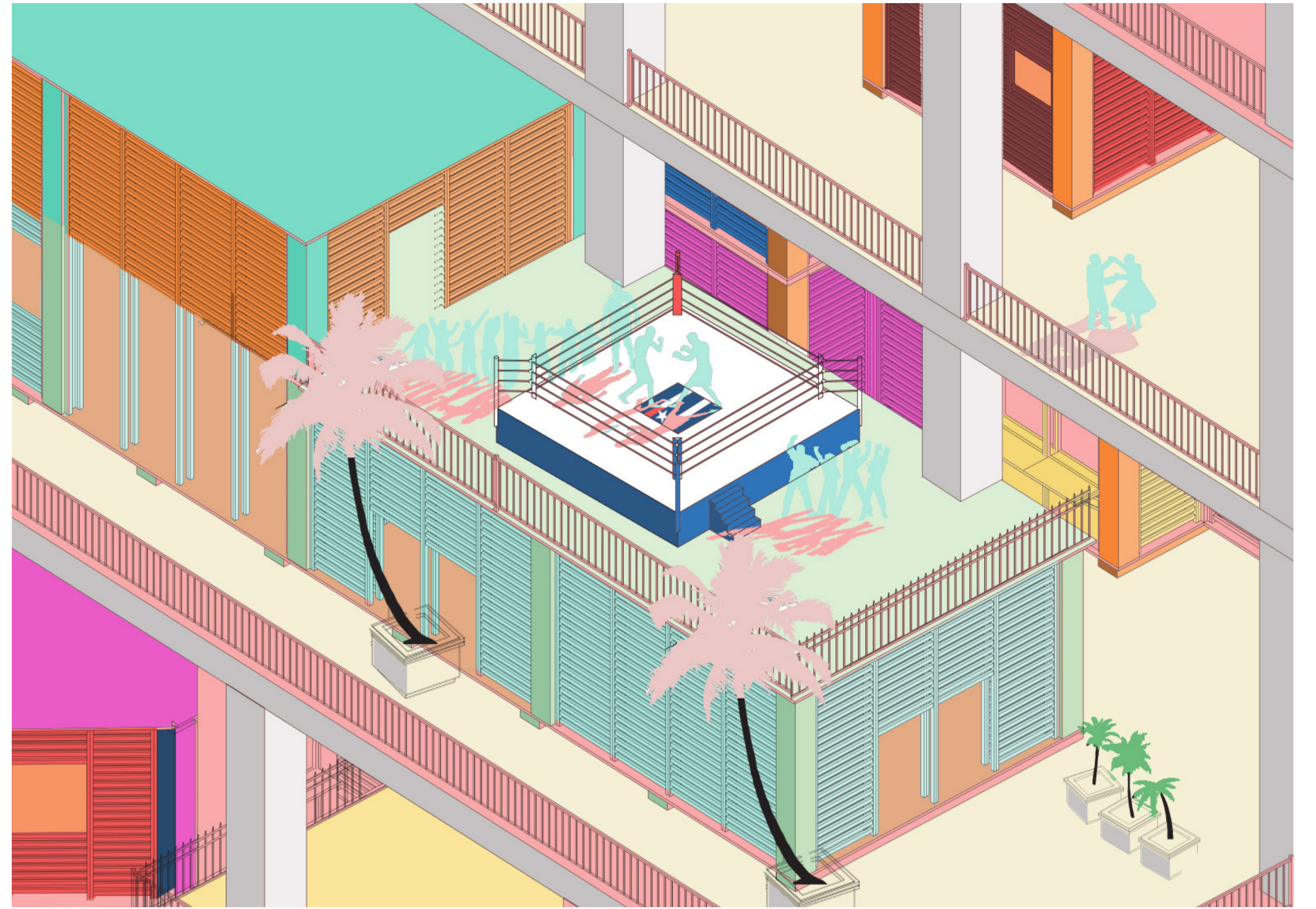
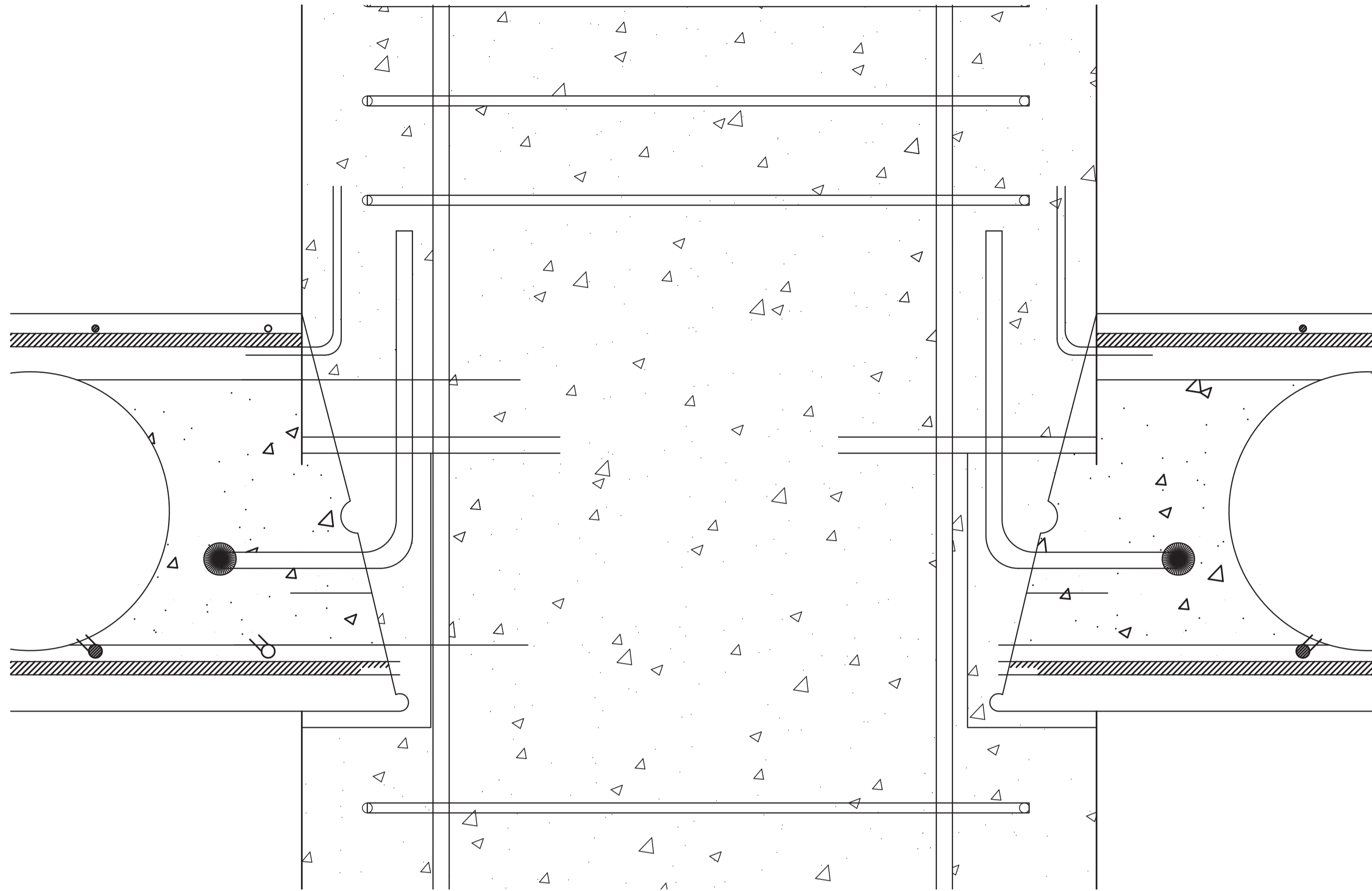


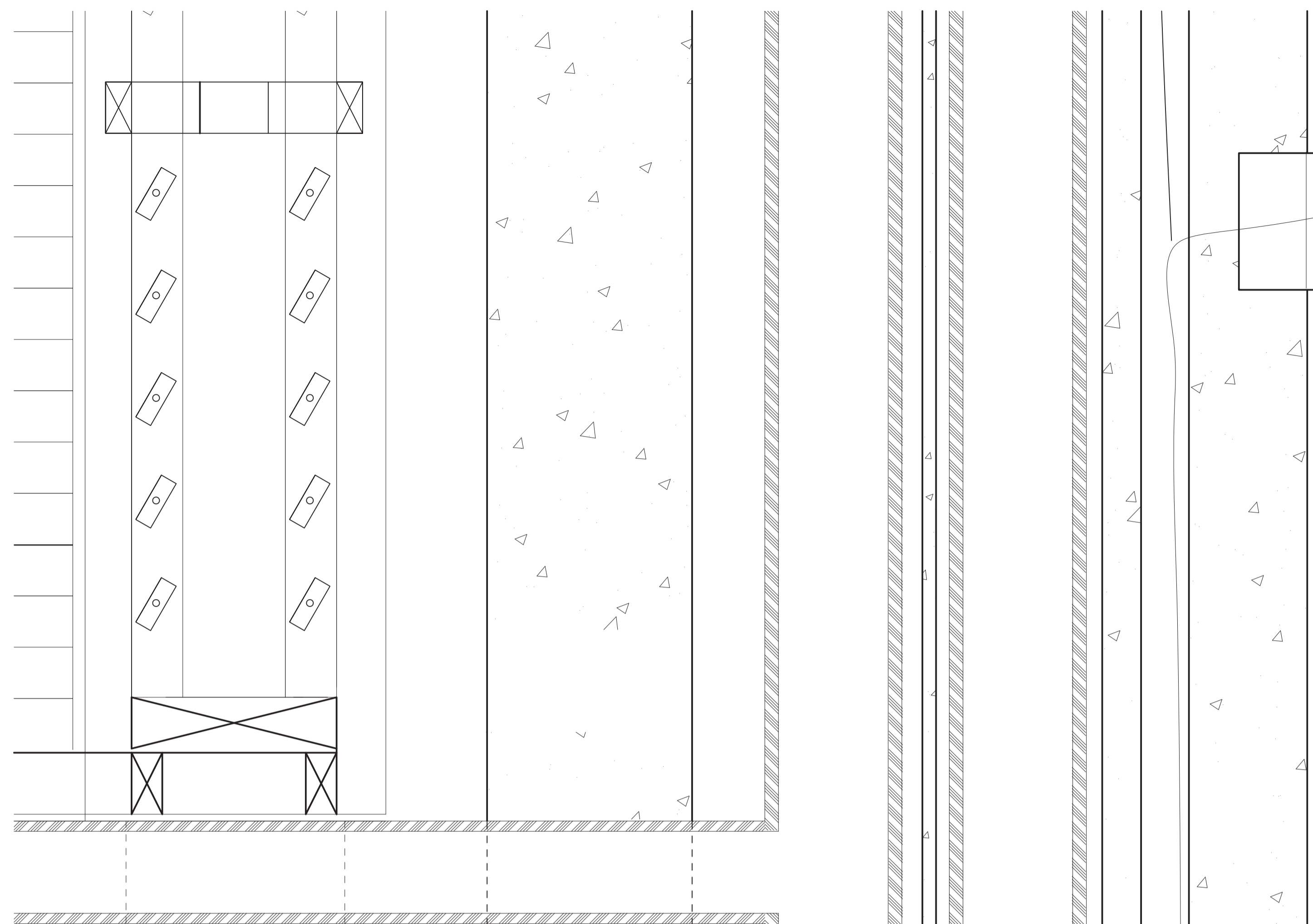


A
NEW
CUBAN
SOCIAL
SPACE
IN
VEDADO





Structural cut column 1-5



Column 1-5 section

BUILDING TECHNOLOGY:

Bubble deck slabs resting on structural columns which carry wiring, gas and piping to work as nodes for supplying temporary structures trough-out the tower.



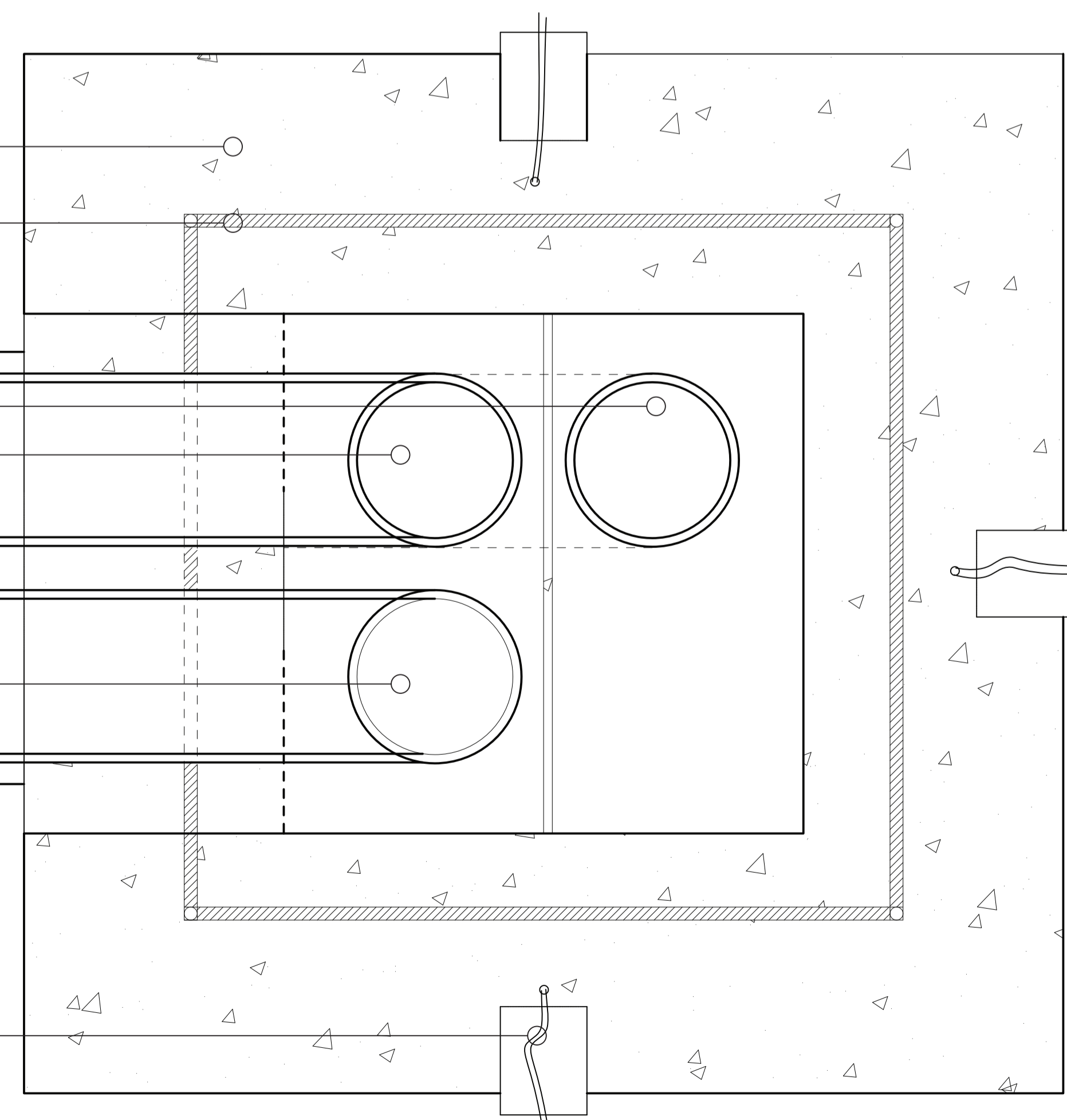
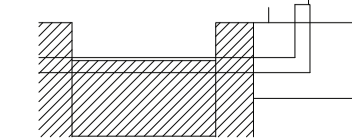
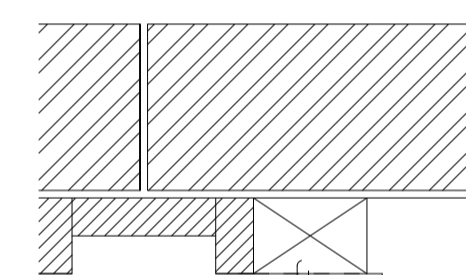
Structural concrete
400 mm
Steel rebar
25 mm

Wastewater pipes
200 mm

Potable water
pipes 20 mm

Gas pipes
200 mm

Wire canals
and electric outlet
100 mm x 75 mm



Column 1-5 plan

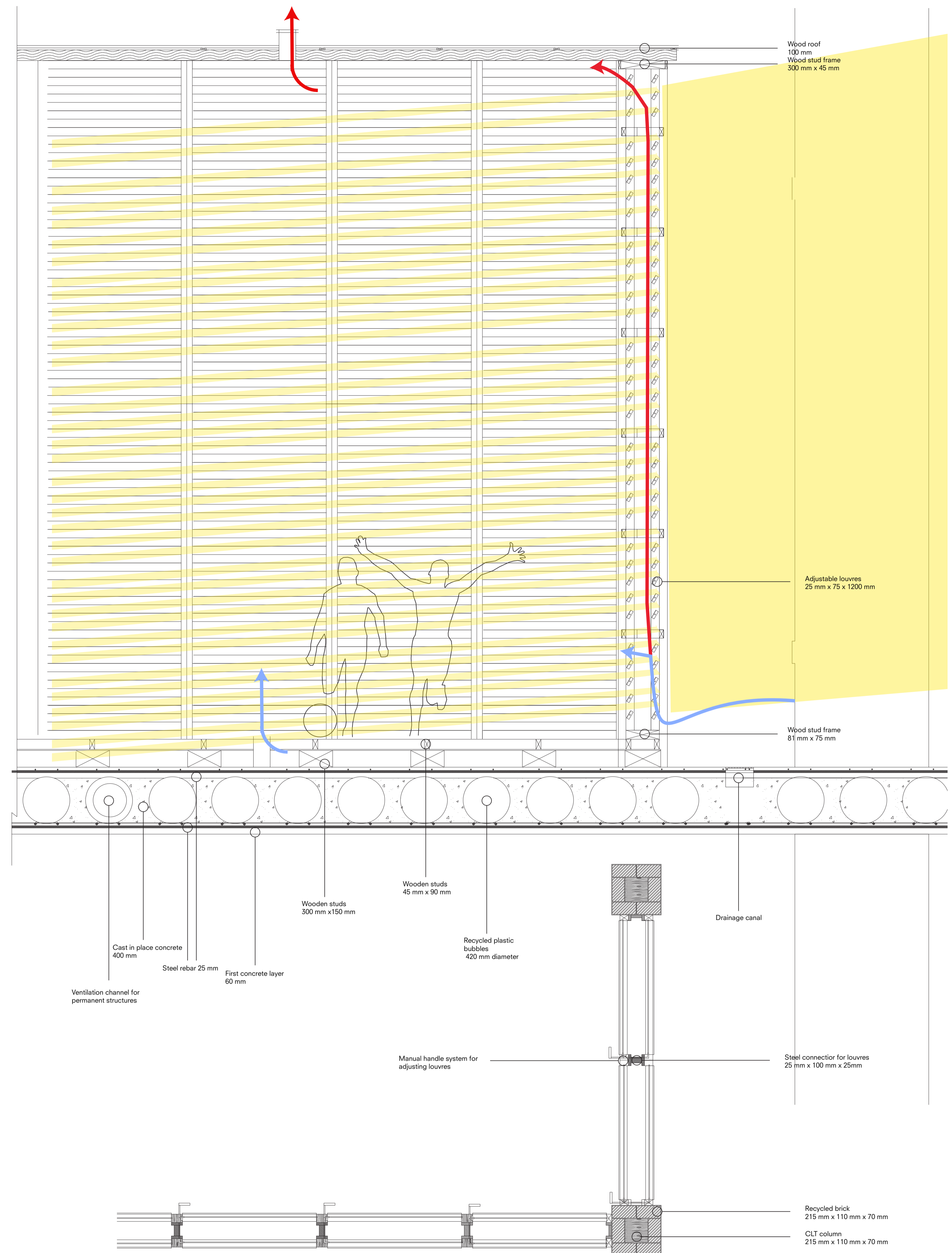


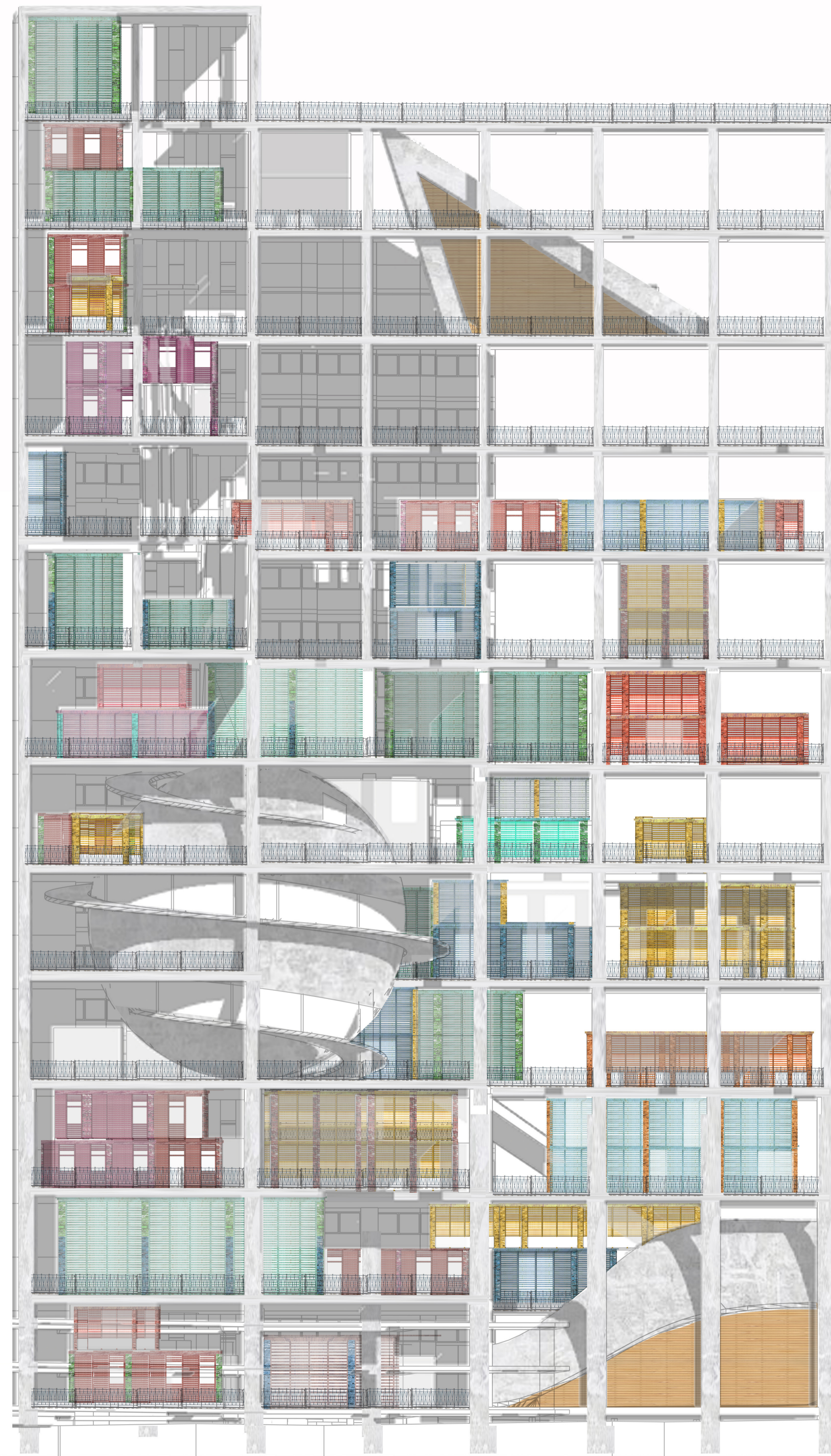
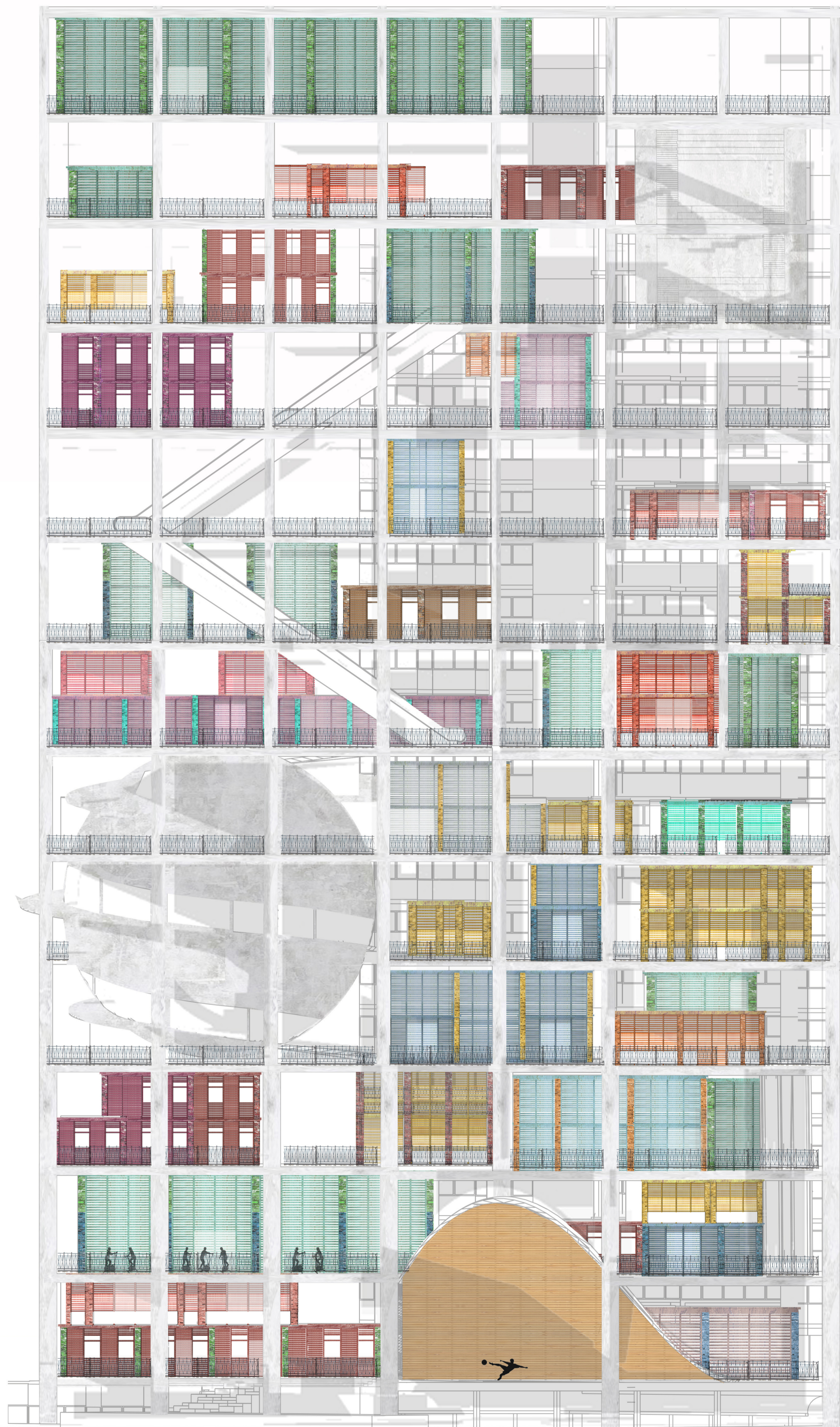
CLIMATE PRINCIPLES:

Temporary structures built by cuban from recycled brick and wood.

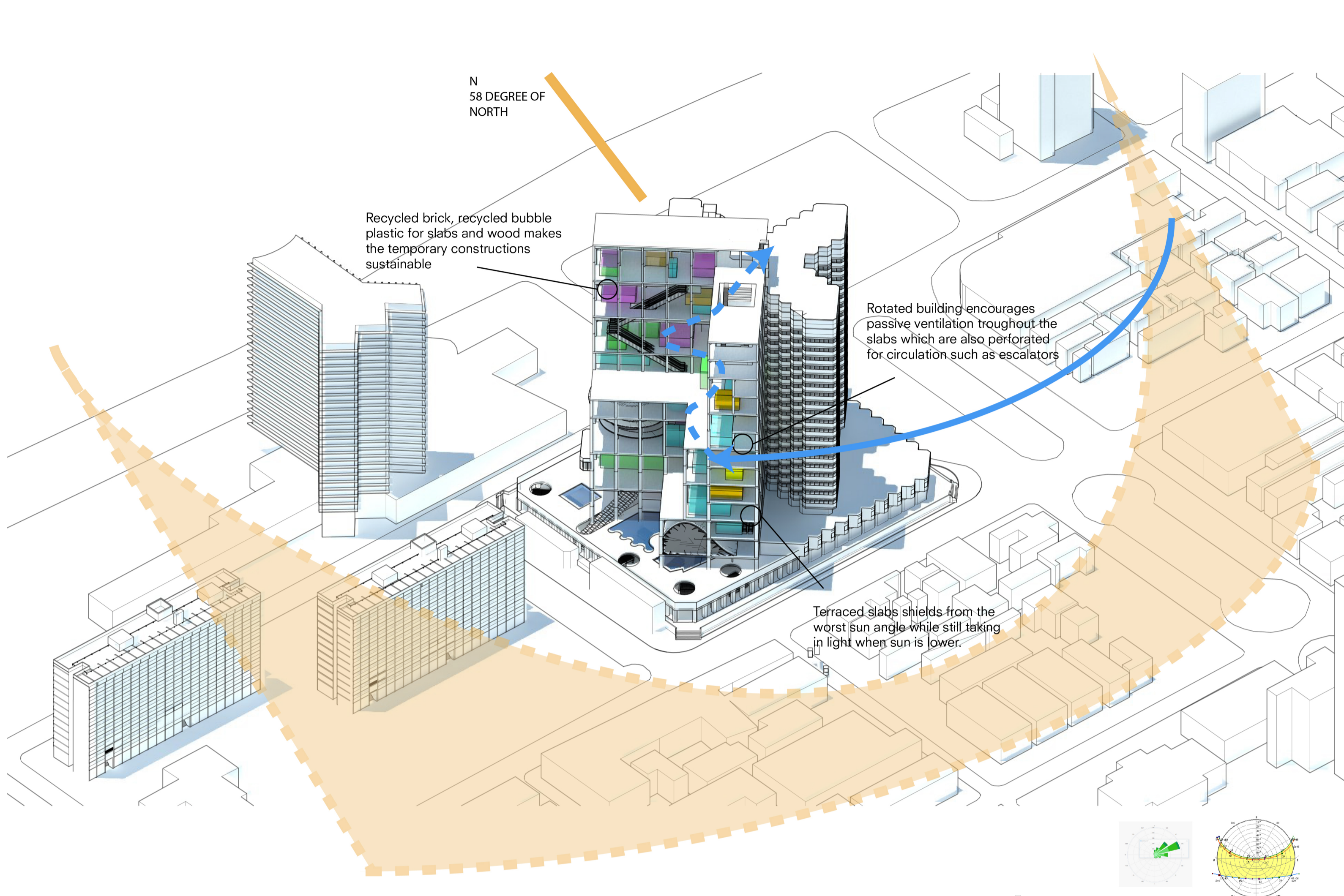
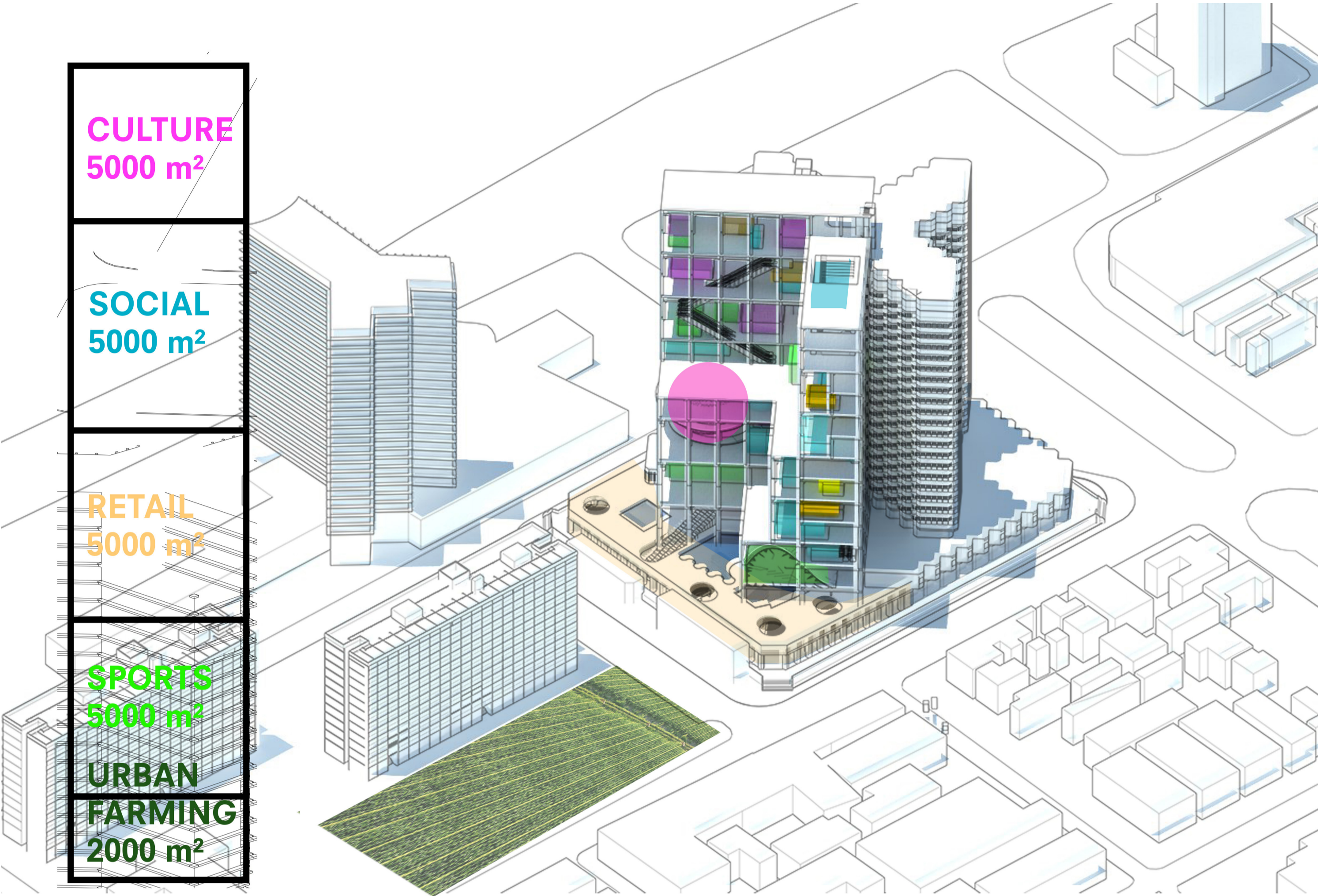
Sun shading from louvres decrease temperature and give light.

Double skin facade and self regulation ducts give enough passive ventilation to offset need of HVAC.



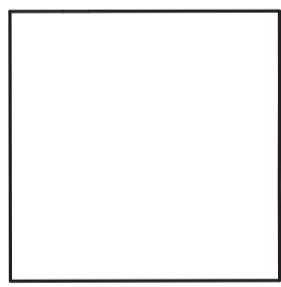


PROGRAM AND PRINCIPLES

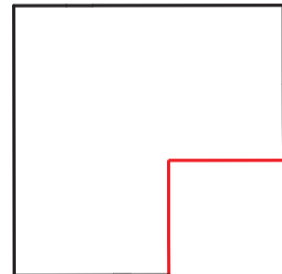


Vertical stacking of social and public space adjoins the failing luxury hotel. A new tourist-Cuban symbiosis emerges.

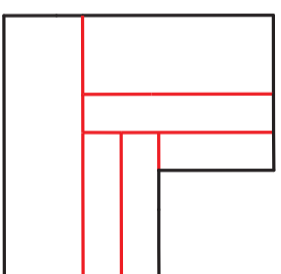
Cubans create their own spaces from the designated units made from wood and brick trough the use of traditional Cuban louveres in the superstructure.



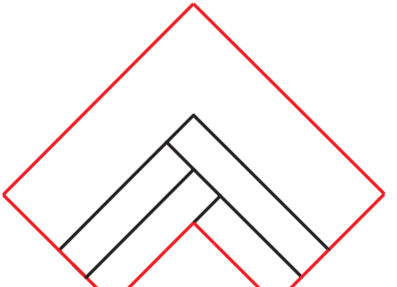
START WITH BLOCK



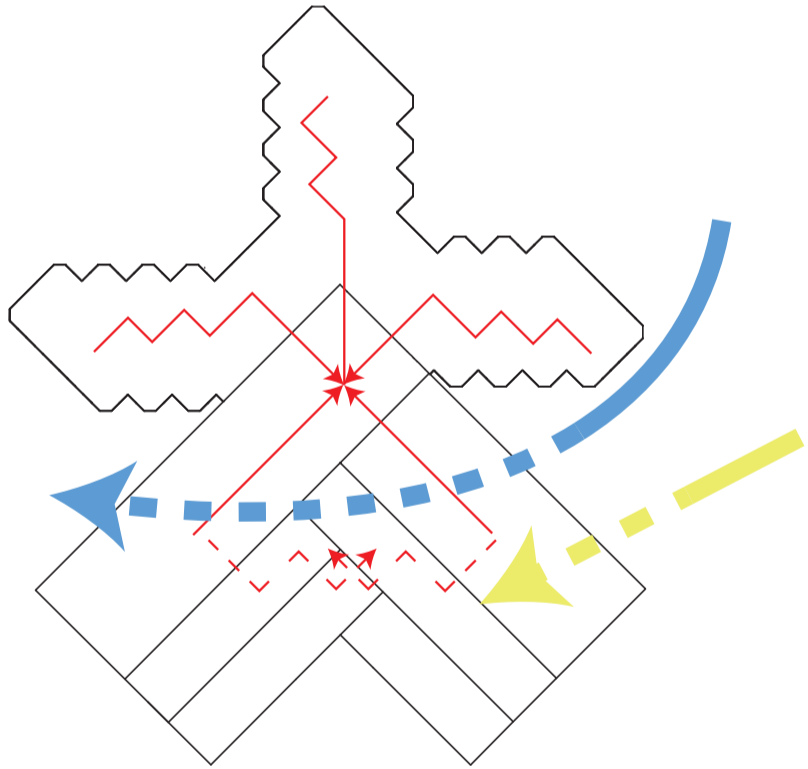
CUT HOLE TO SPUR MOVEMENT



CUBAN TERRACING FOR SHADING AND VIEW

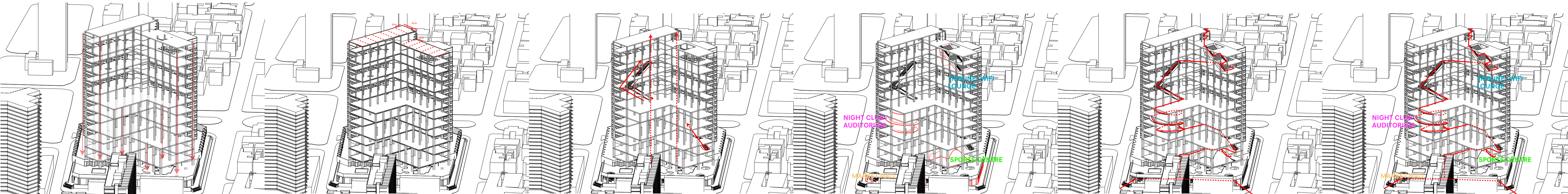


ROTATE FOR BETTER LIGHT, WIND AND CONNECTION TO MELIA



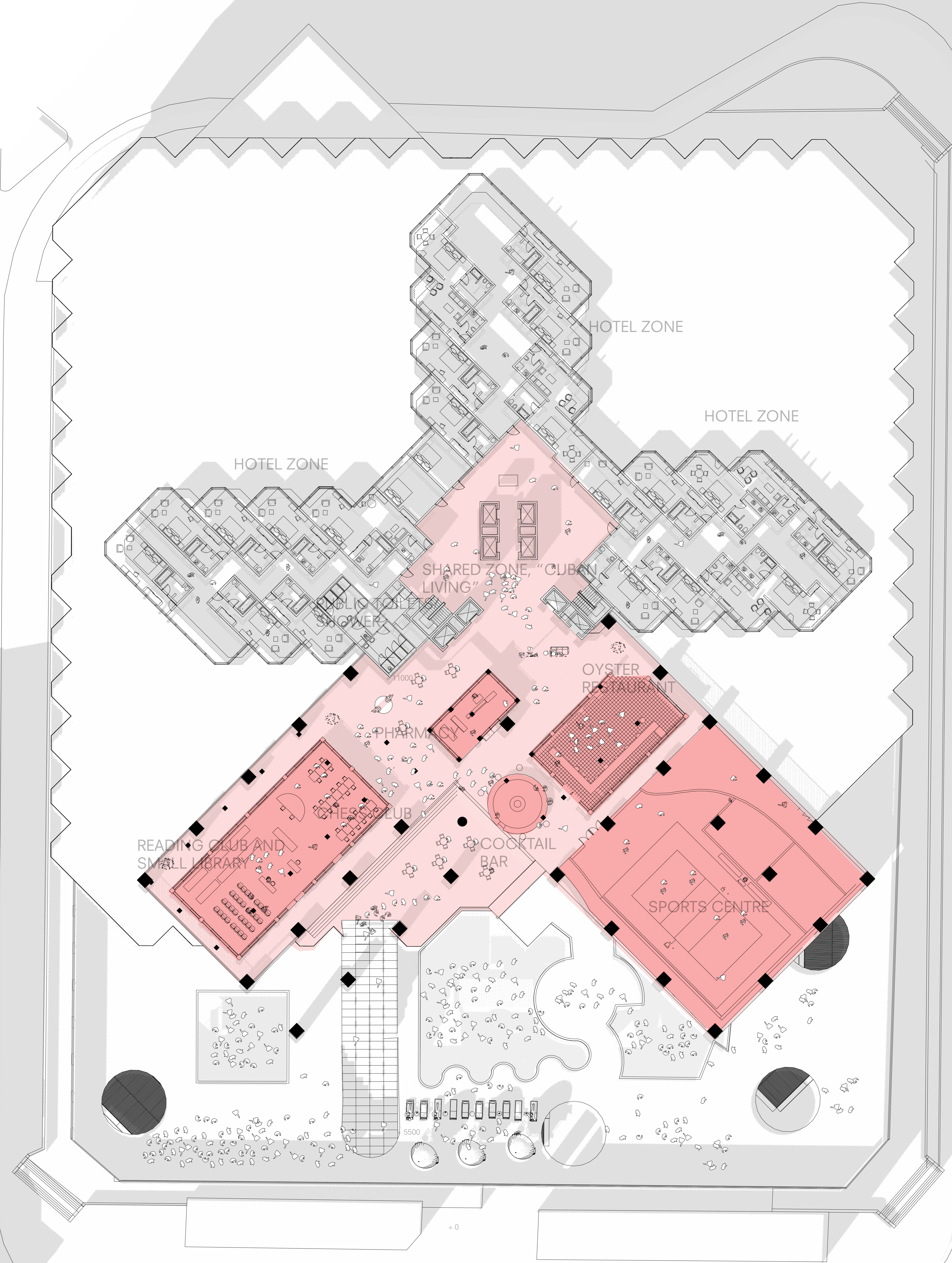
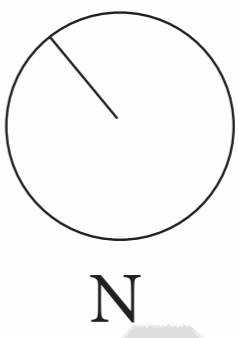
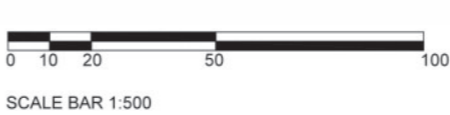
THE SOCIAL TOWER:

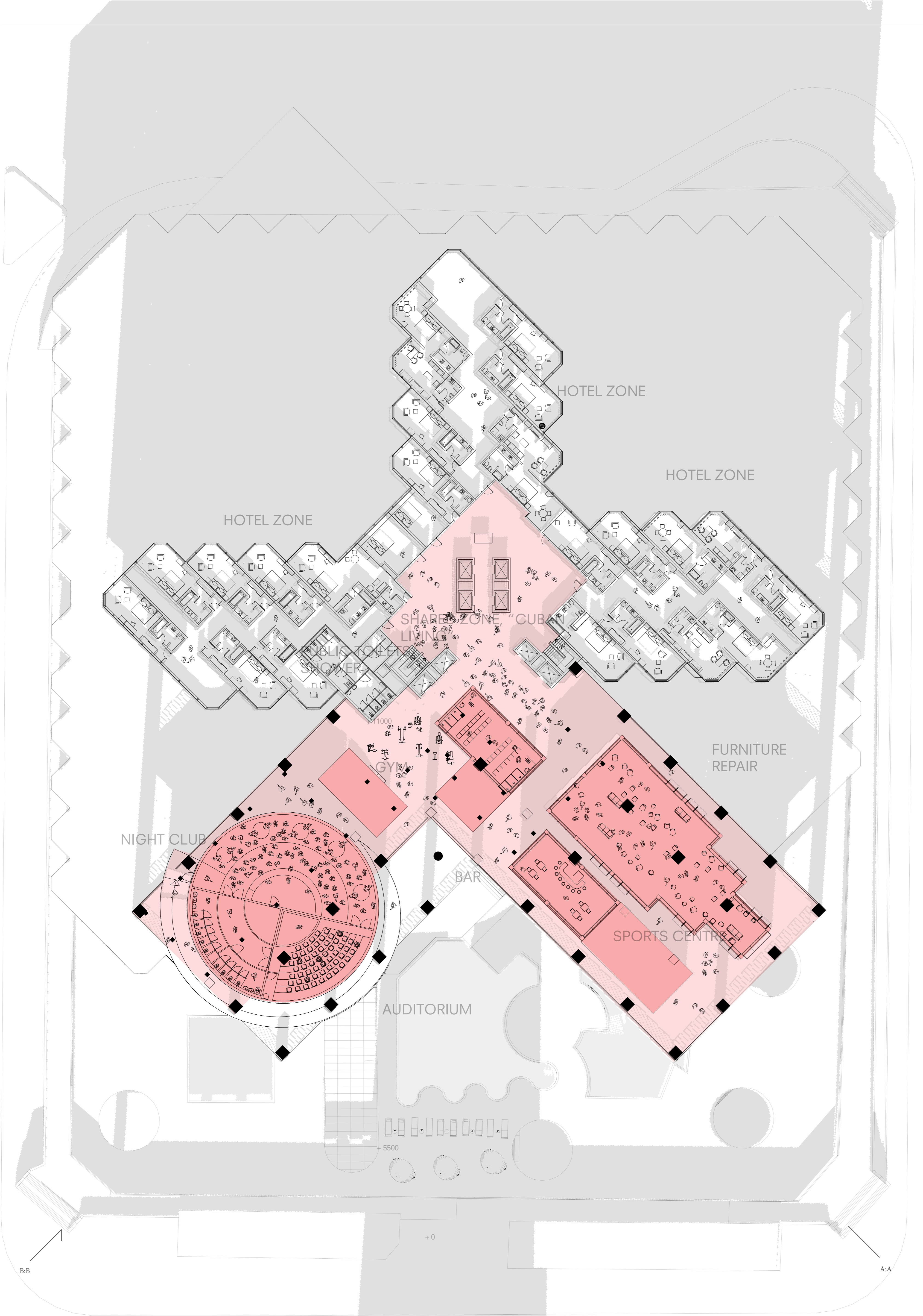
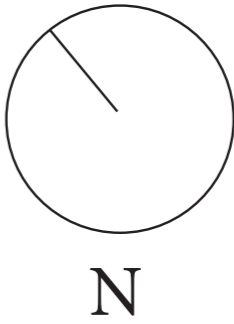
By rotating the structure a clear direction and meeting point is defined. Also the rotation betters the inflow of light and air



PLANS:

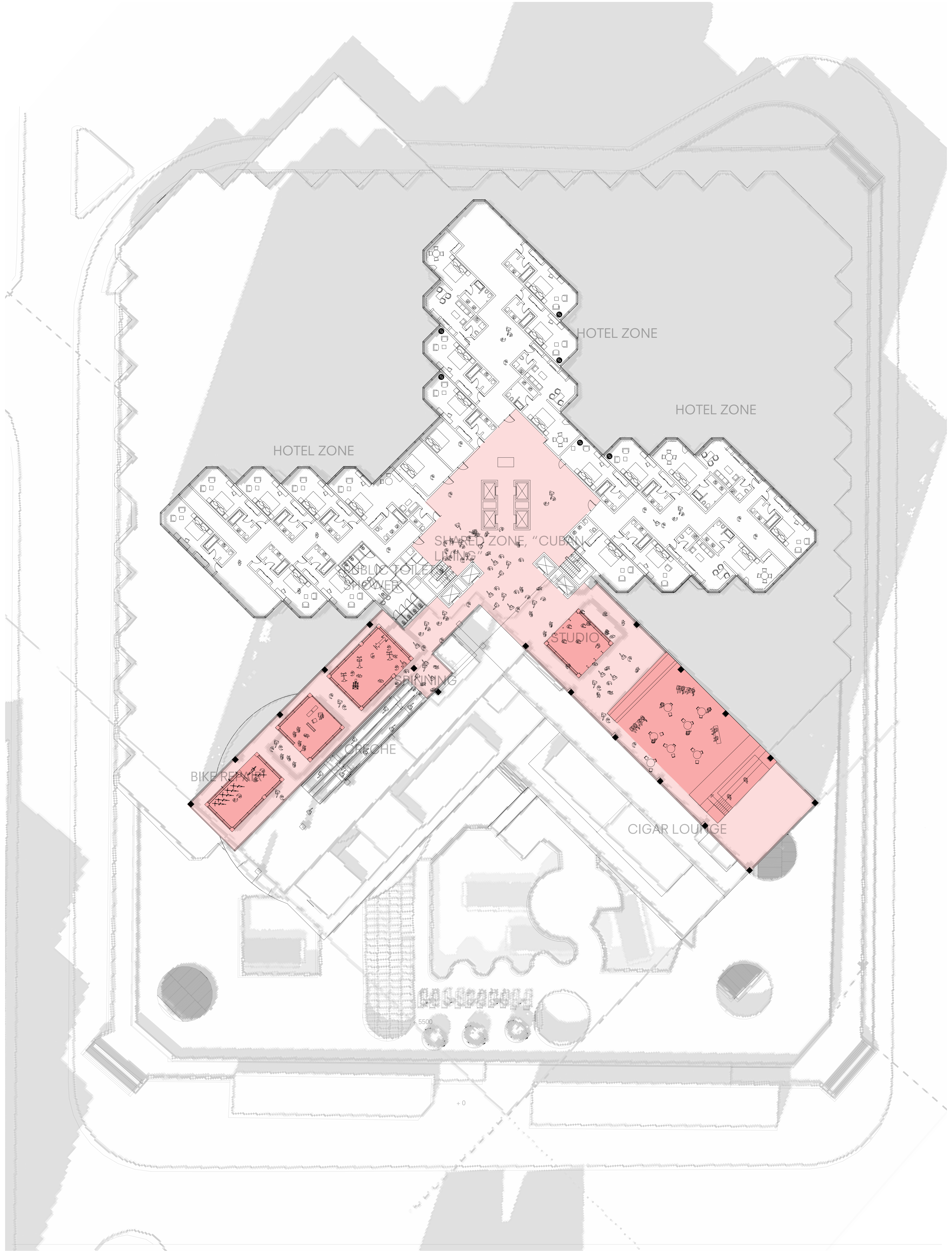
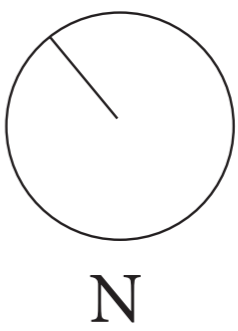
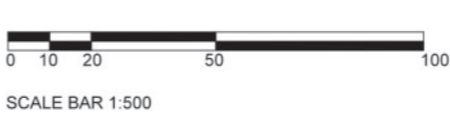
LEVEL 3
SCALE 1:200





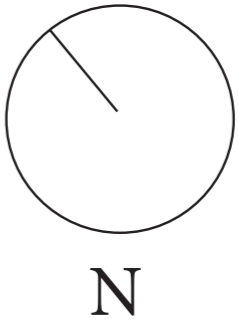
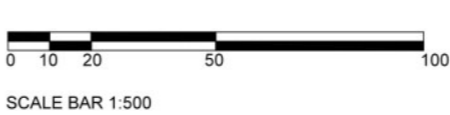
PLANS:

LEVEL 23
SCALE 1:200



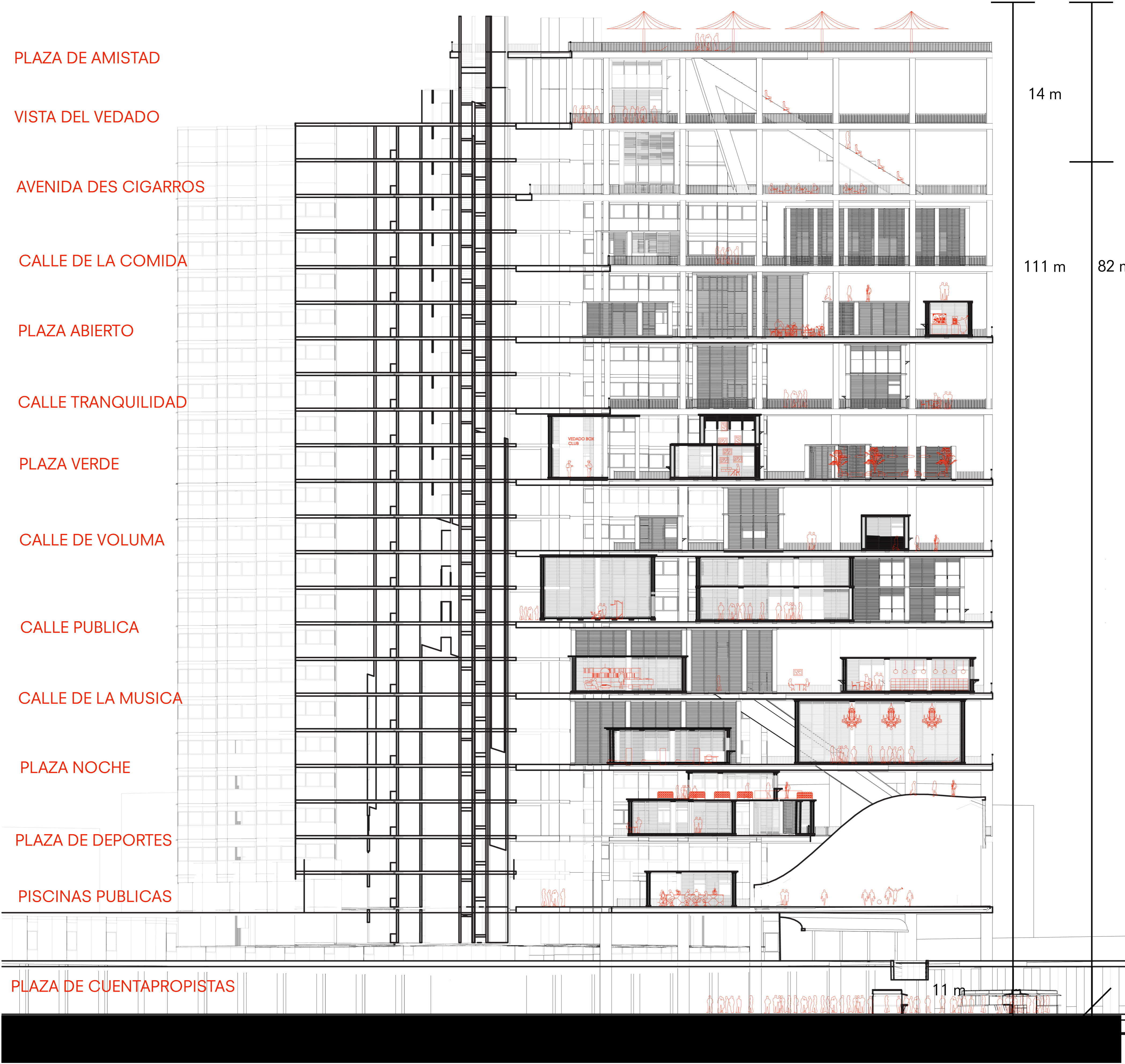
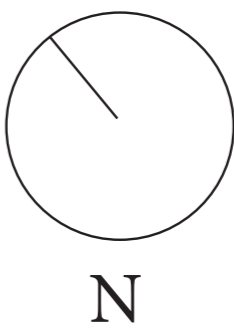
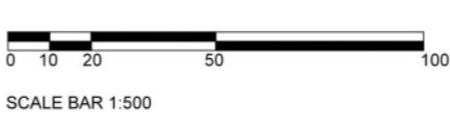
SECTIONS:

A:A
SCALE 1:200



SECTIONS:

B:B
SCALE 1:200



PLANS:

GROUND LEVEL
SCALE 1:500

