

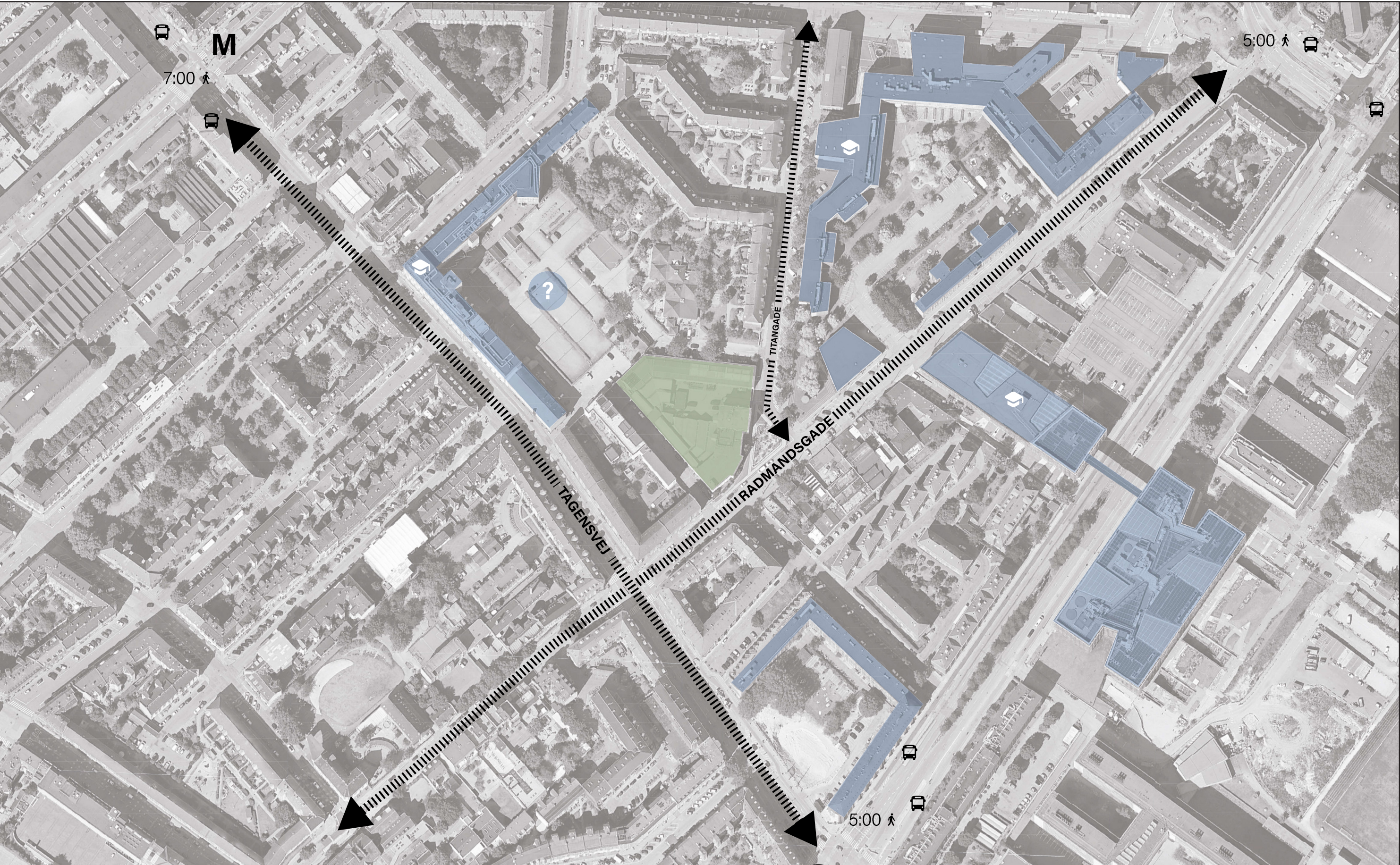
# legacy lab

A holistic approach to the adaptive reuse of industrial heritage

Justin Roelofs

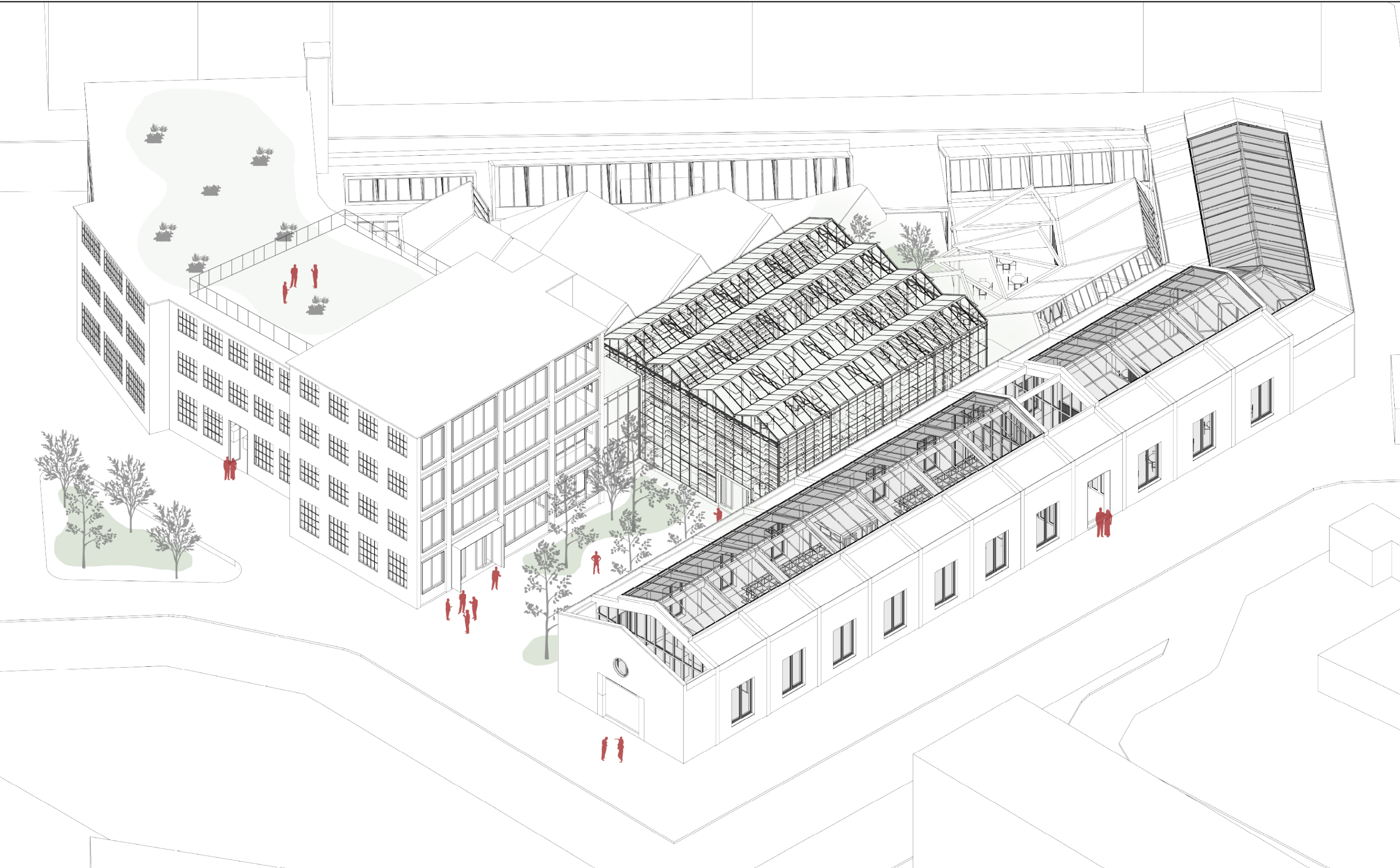
Haraldsgade-kvarteret in Copenhagen, shaped by its industrial past, transitioned from fields to a thriving industrial hub in the late 1800s. Industrial decline in the mid-1900s led to residential developments, replacing most industrial structures while some remain and contribute to the neighbourhood's identity. Urban redevelopment often prioritizes new construction, erasing historical narratives and triggering gentrification.

With Legacy Lab, the goal is to reuse both tangible and intangible elements of industrial heritage to create a hybrid public condenser that contributes to preserving neighbourhood identity in an area undergoing urban redevelopment.

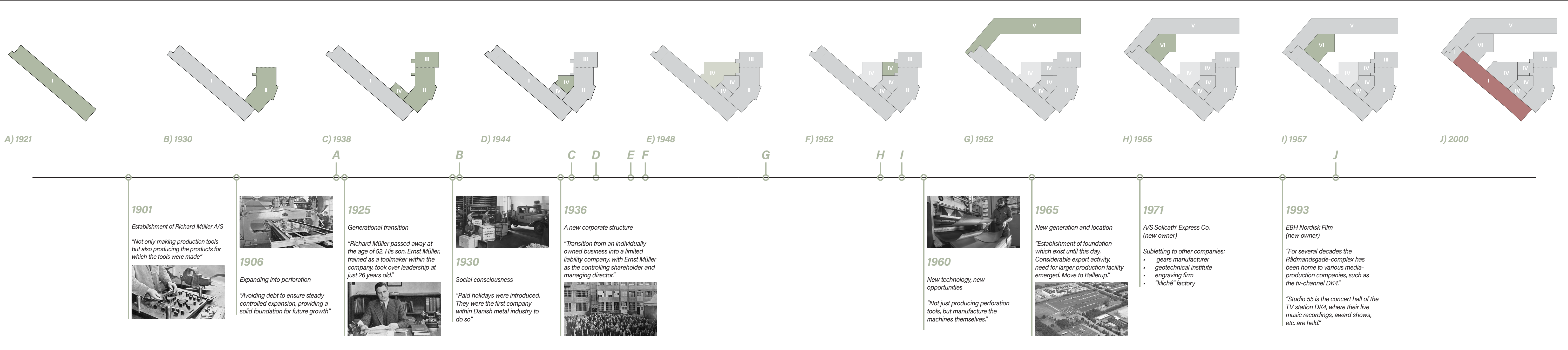


**Site attributes**

- marked for demolition: **no**
- listed heritage: **no**
- conservation value: **low**
- site area: **5729 m<sup>2</sup>**
- vacant: **yes**



Site axonometric



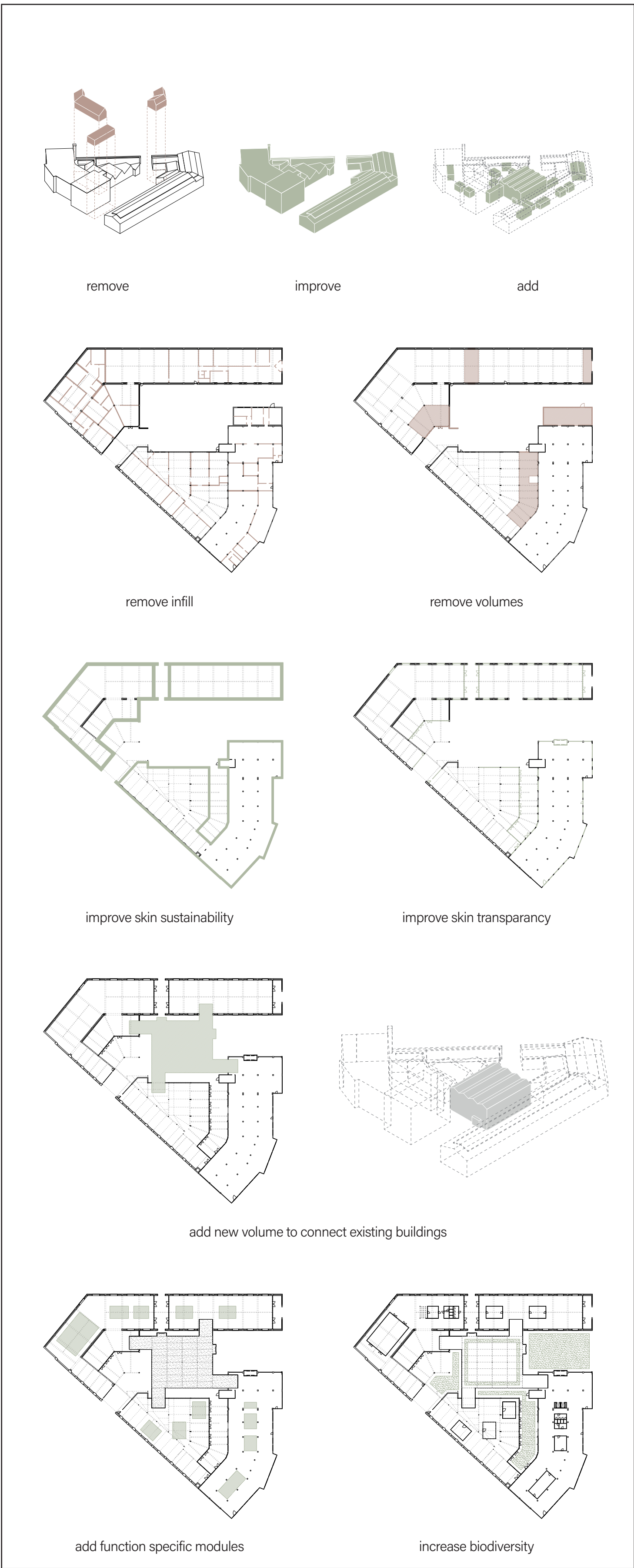
Site history

	area	structural components			materials	internal organization
	2550 m <sup>2</sup>					
	1725 m <sup>2</sup>					
	950 m <sup>2</sup>					

Existing components & characteristics





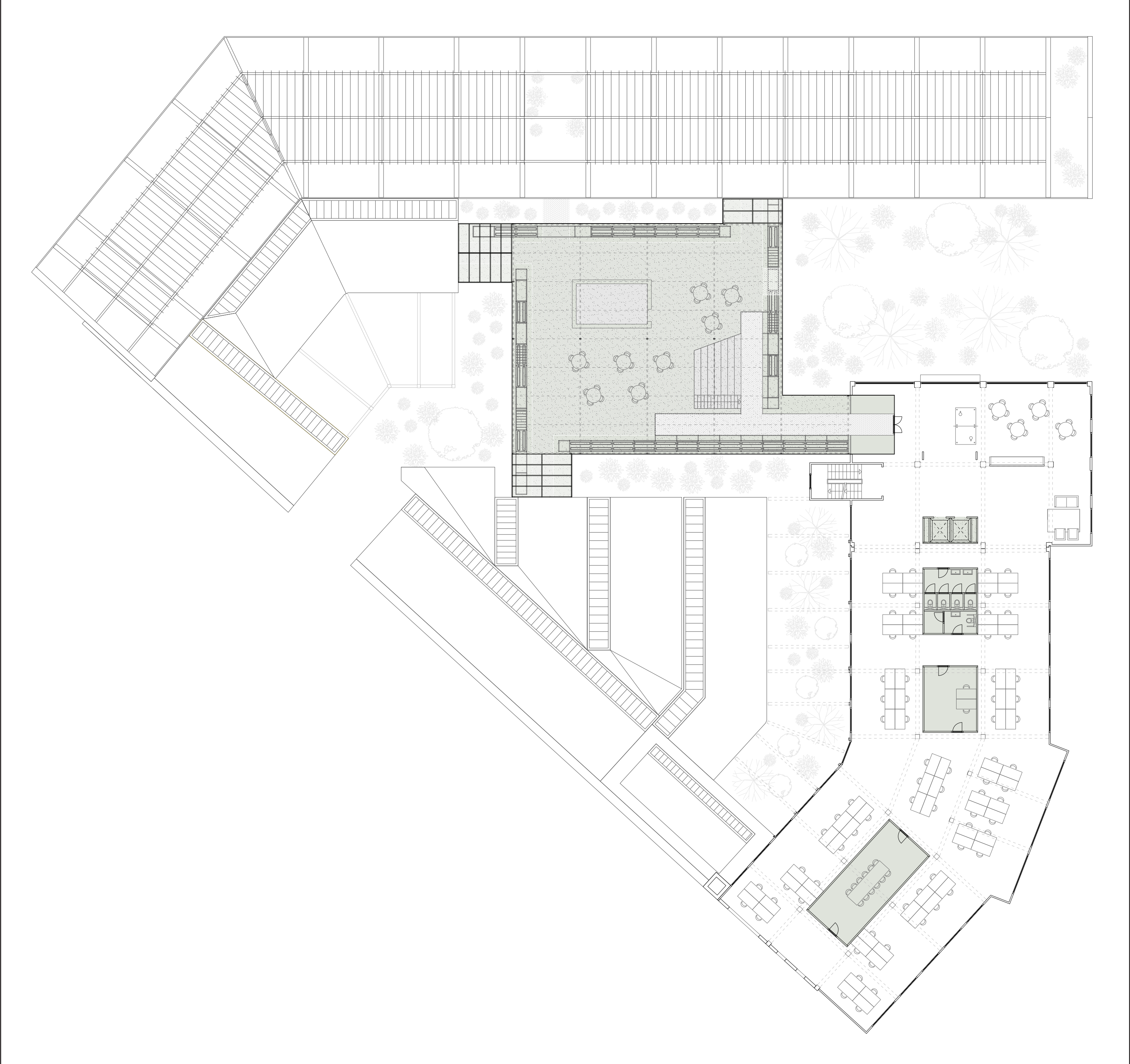


Concept diagram



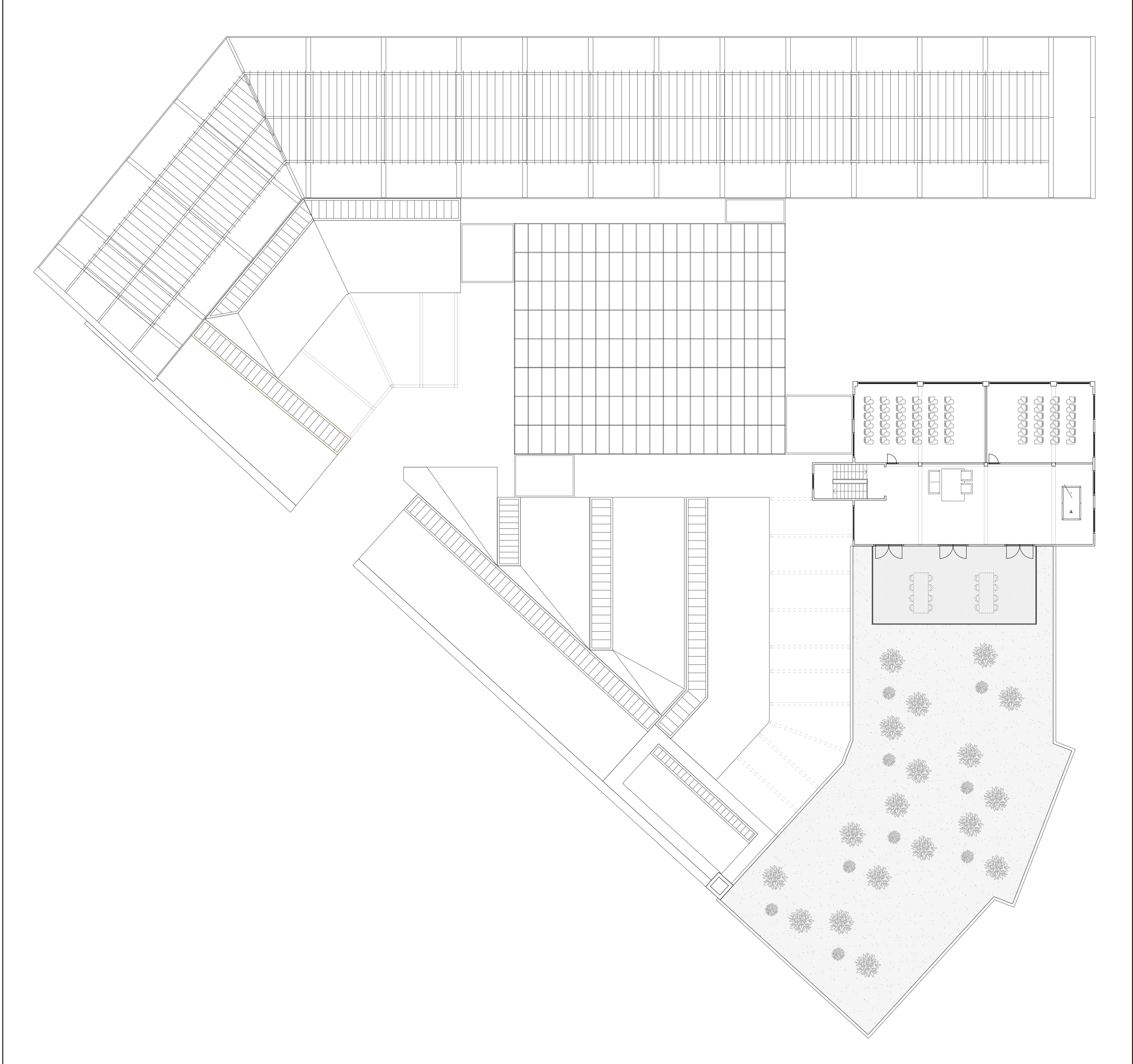
Floorplan level 0

1:150



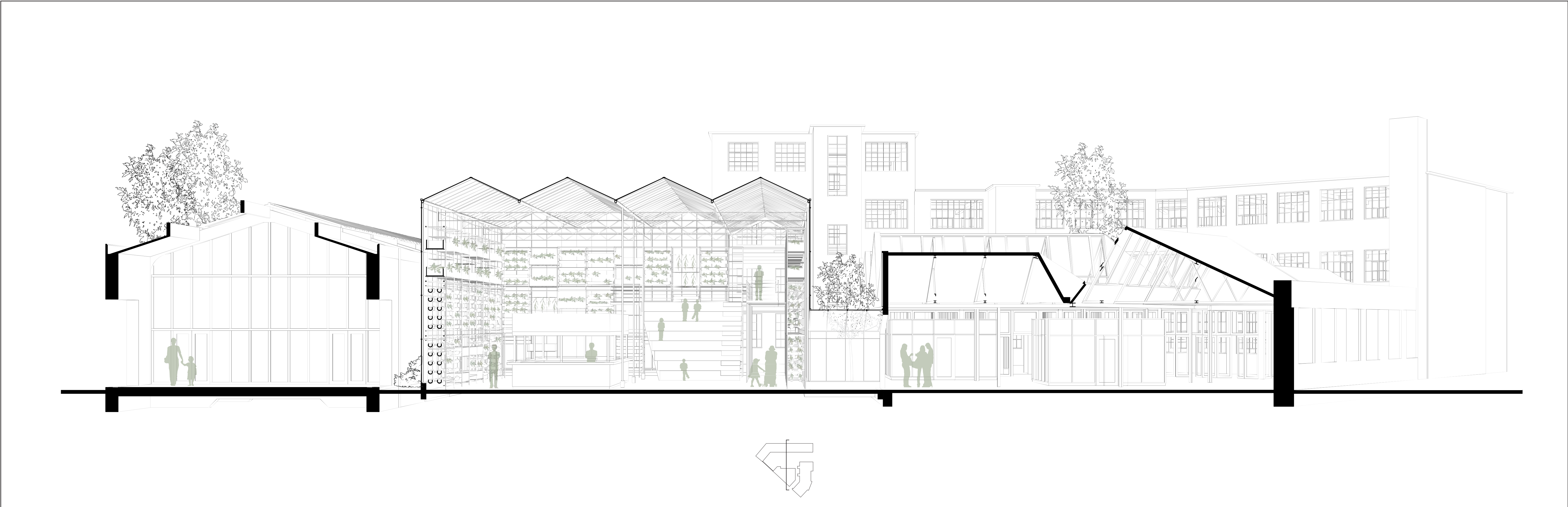
Floorplan level 1

1:150



Floorplan level 3

1:150



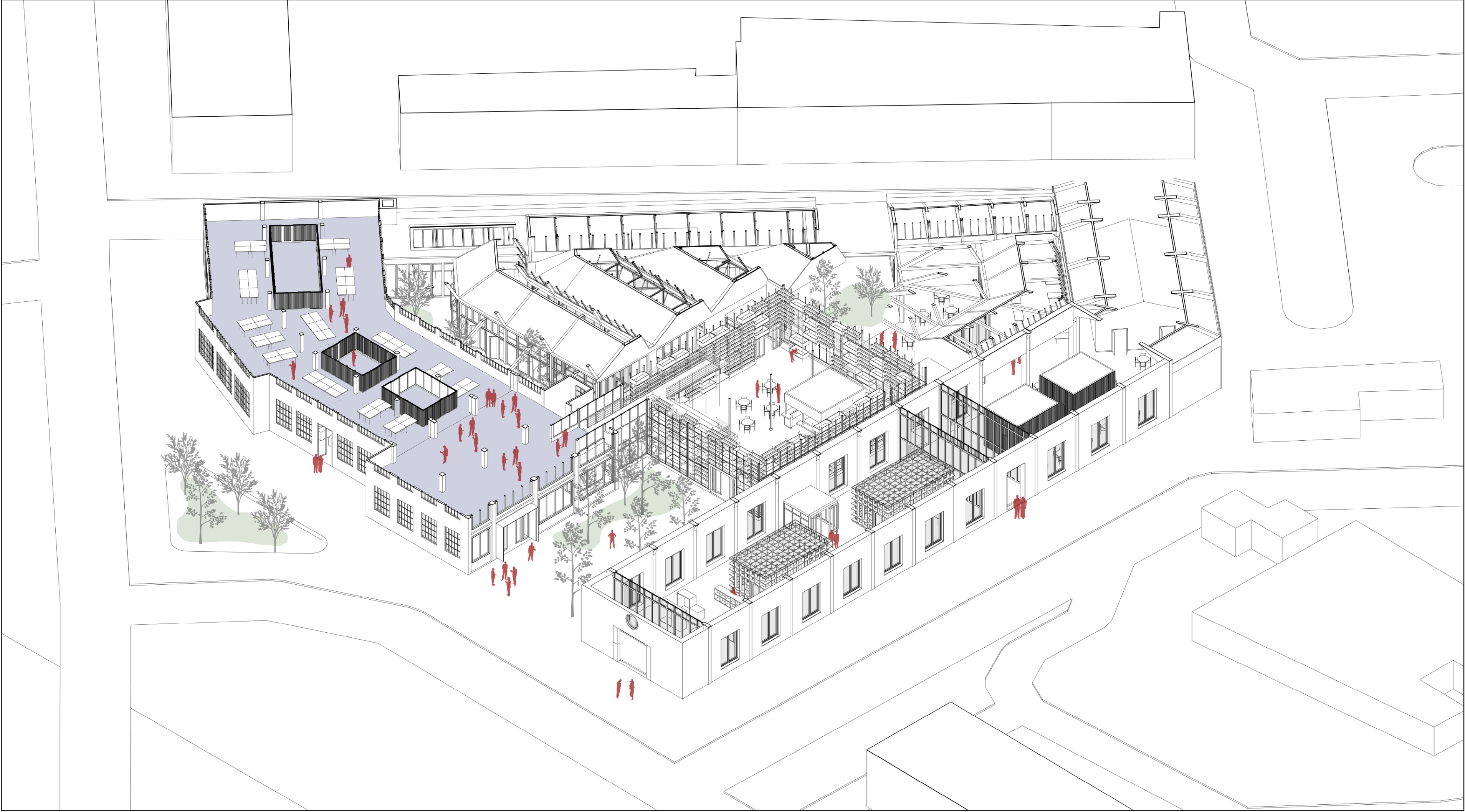
Section

1:100

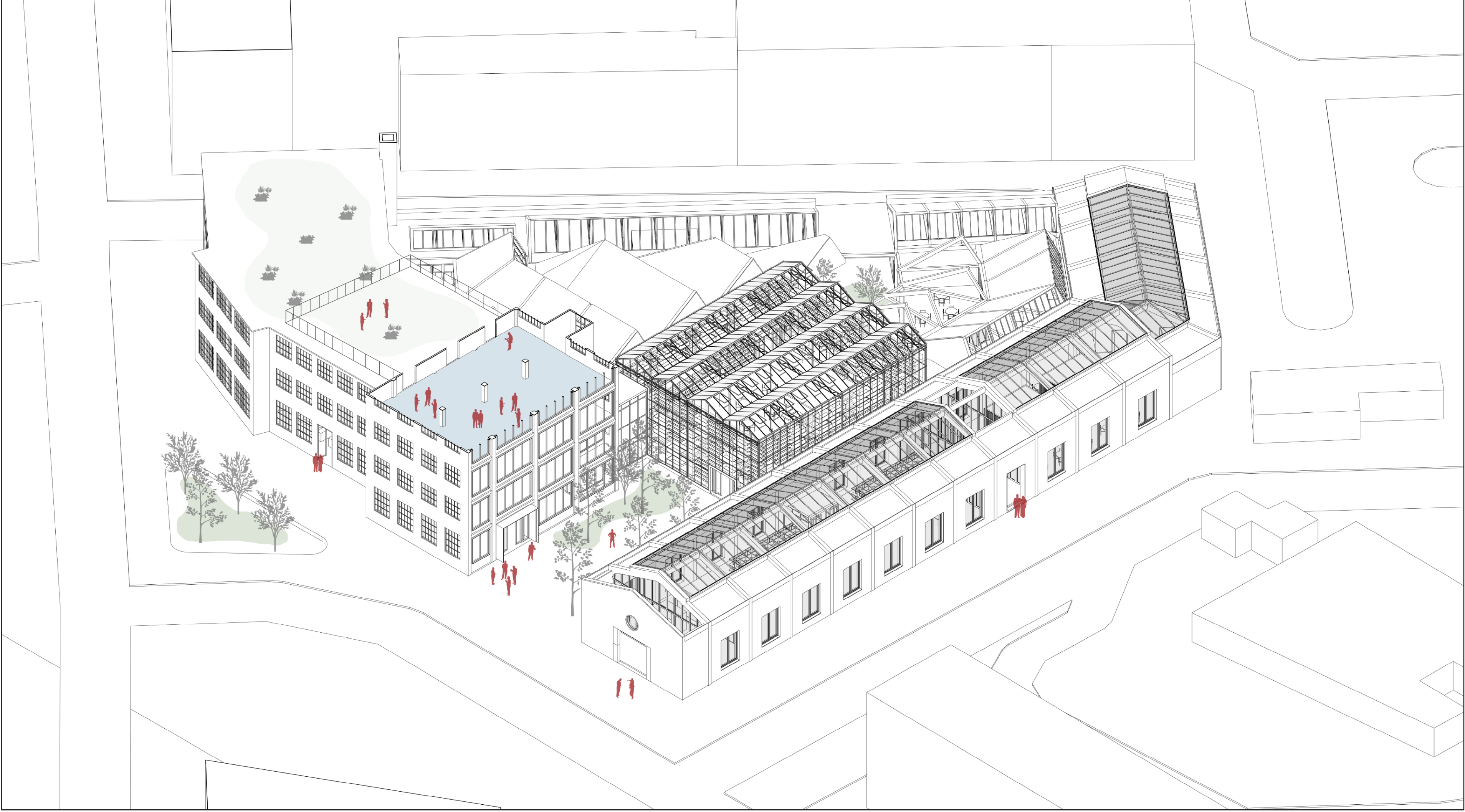




Programmatic placement level 0

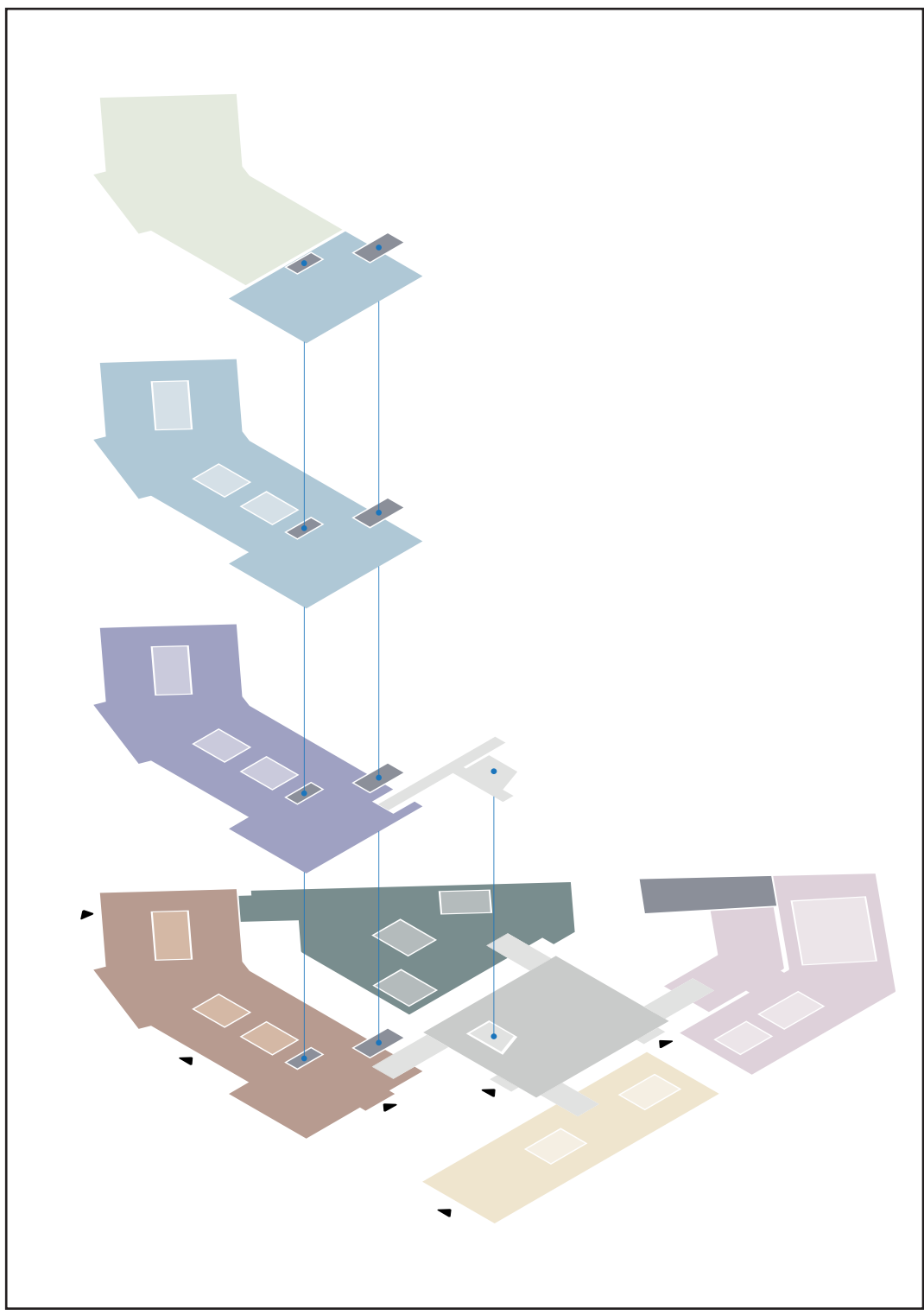


Programmatic placement level 1

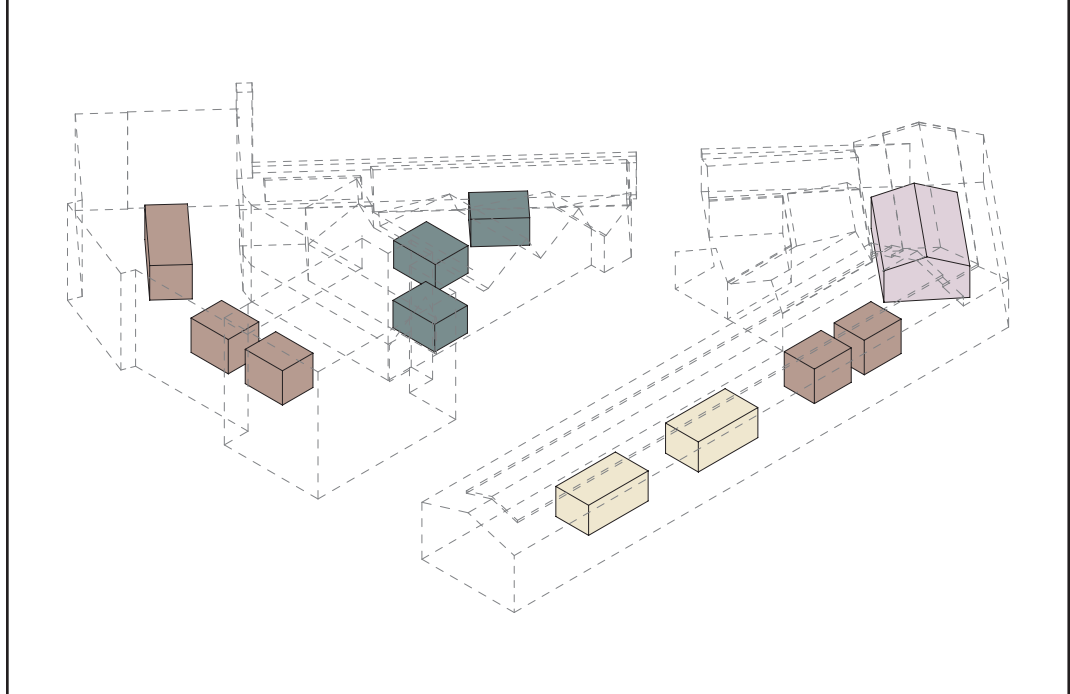


Programmatic placement level 3

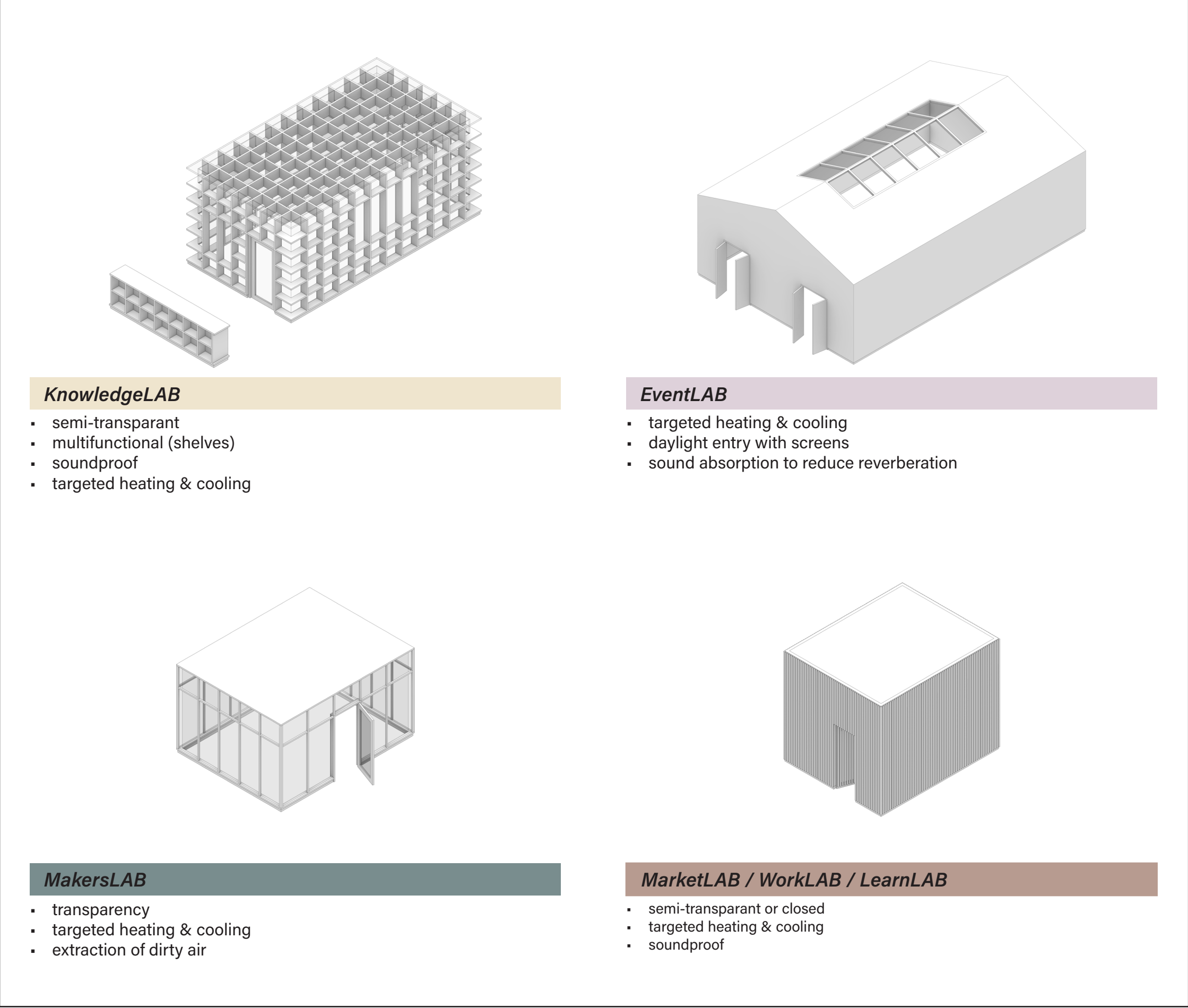
<b>GreenLAB</b>	<b>443 m<sup>2</sup></b>
• Central Café	21 m <sup>2</sup>
• Open area	422 m <sup>2</sup>
<b>KnowledgeLAB</b>	<b>366 m<sup>2</sup></b>
• Open library	320 m <sup>2</sup>
• Writing room	23 m <sup>2</sup>
• Counter + storage	23 m <sup>2</sup>
<b>Restaurant + EventLAB</b>	<b>558 m<sup>2</sup></b>
• Restaurant	426 m <sup>2</sup>
• EventLAB (multifunctional room)	100 m <sup>2</sup>
• Kitchen + bar	32 m <sup>2</sup>
<b>MakersLAB</b>	<b>516 m<sup>2</sup></b>
• Open workspace	441 m <sup>2</sup>
• Machine room	25 m <sup>2</sup>
• Paint studio	25 m <sup>2</sup>
• Textile studio	25 m <sup>2</sup>
<b>MarketLAB</b>	<b>730 m<sup>2</sup></b>
• Open retail area	652 m <sup>2</sup>
• Storage	78 m <sup>2</sup>
<b>WorkLAB</b>	<b>830 m<sup>2</sup></b>
• Open office	672 m <sup>2</sup>
• Focus rooms M	20 m <sup>2</sup>
• Focus room L	38 m <sup>2</sup>
• Canteen	100 m <sup>2</sup>
<b>LearnLAB</b>	<b>830 m<sup>2</sup></b>
• Open studio	672 m <sup>2</sup>
• Focus rooms M	20 m <sup>2</sup>
• Focus room L	38 m <sup>2</sup>
• Canteen	100 m <sup>2</sup>
<b>Services</b>	<b>227 m<sup>2</sup></b>
• Services	85 m <sup>2</sup>
• Toilets	82 m <sup>2</sup>
• Staircases + elevators	60 m <sup>2</sup>
<b>Rooftop garden</b>	<b>233 m<sup>2</sup></b>
<b>TOTAL</b>	<b>4500 m<sup>2</sup></b>



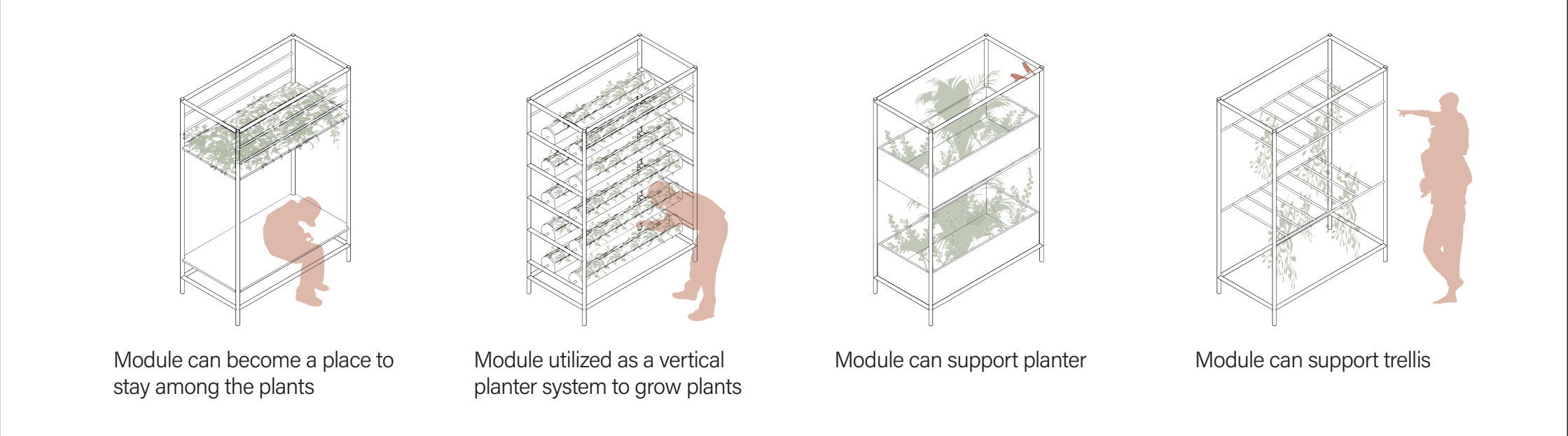
Programmatic placement



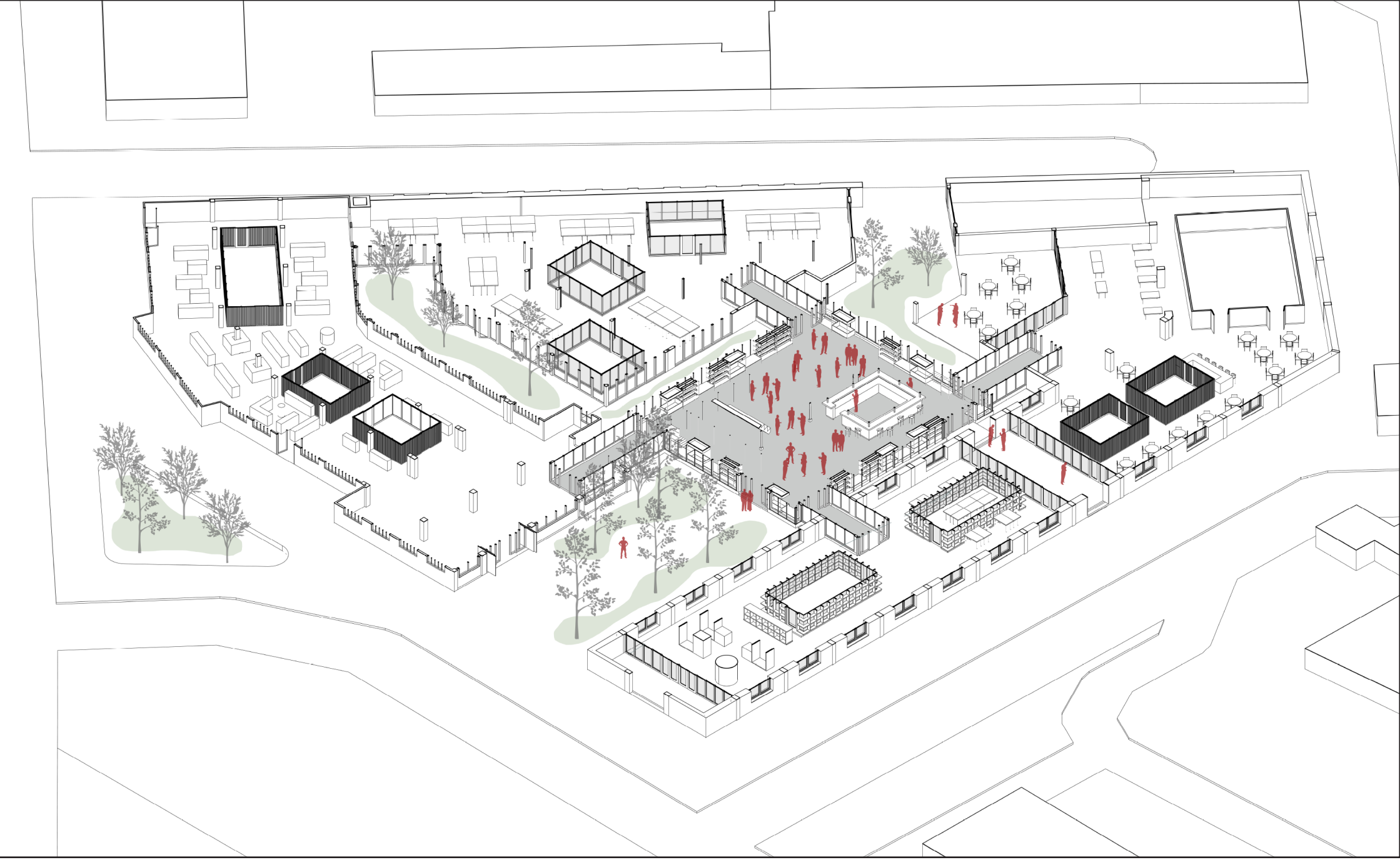
Modules placement



Specialised modules



Modular planter system



Programmatic placement level 0 (evening / night)



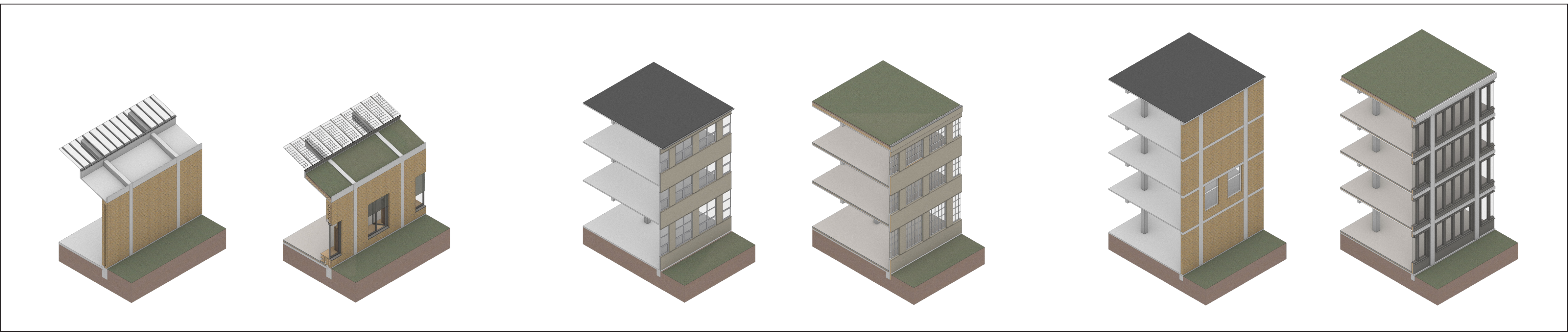


1. preserved in place  
(existing structure + skin)

2. re-use and upcycling  
(i.e. removed brick as base layer)

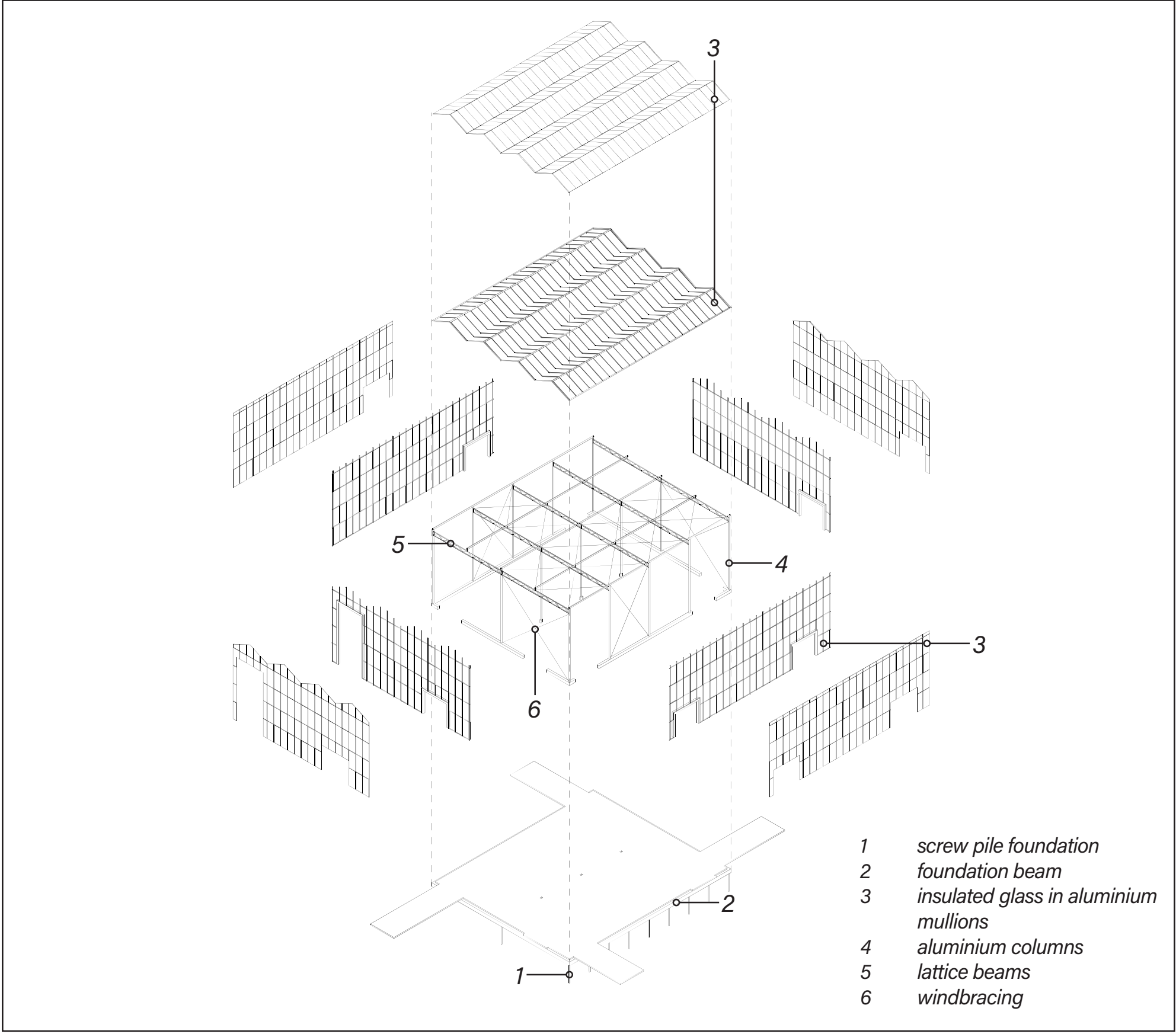
3. new, biogene materials  
(i.e. timber facade elements)

4. new, reusable materials  
(i.e. design for disassembly)

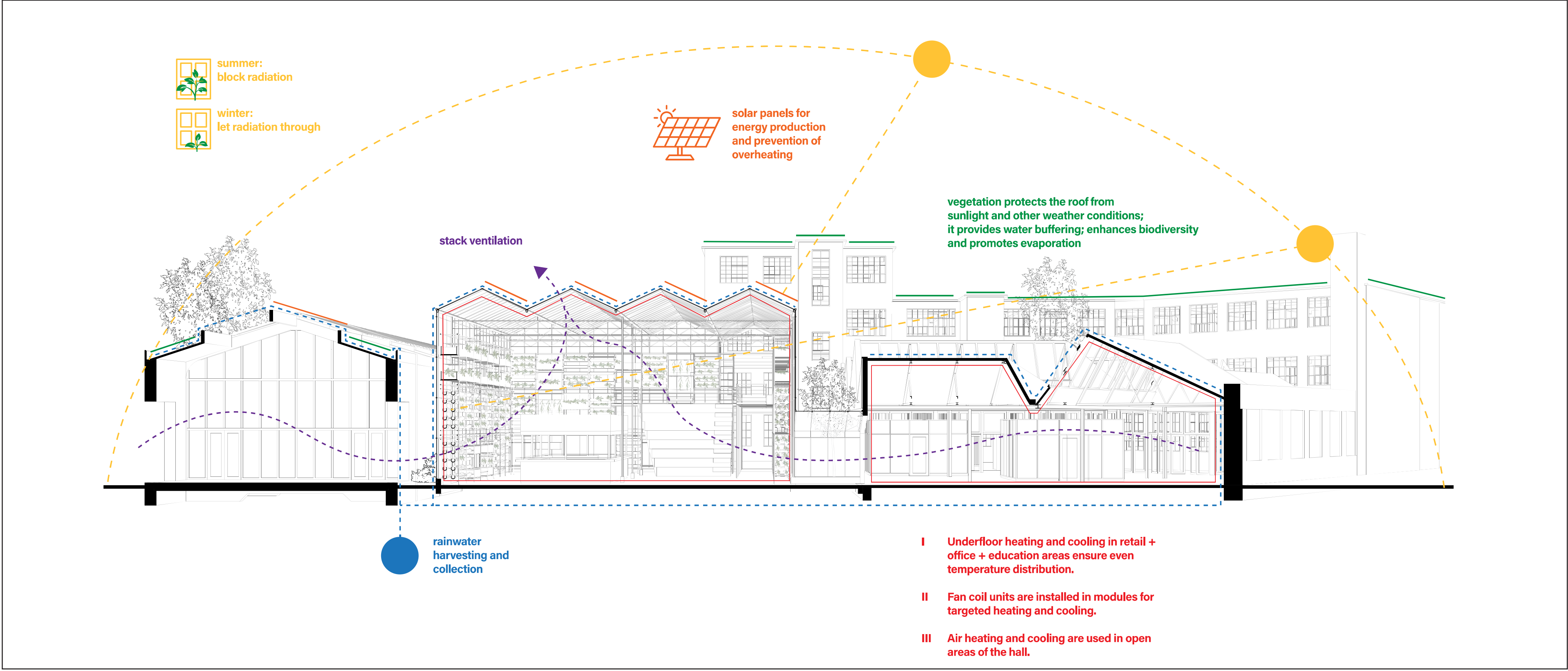


‘Resource stair’ approach on materials

Existing facades (left) and facade improvements (right)



Greenhouse structural axonometric

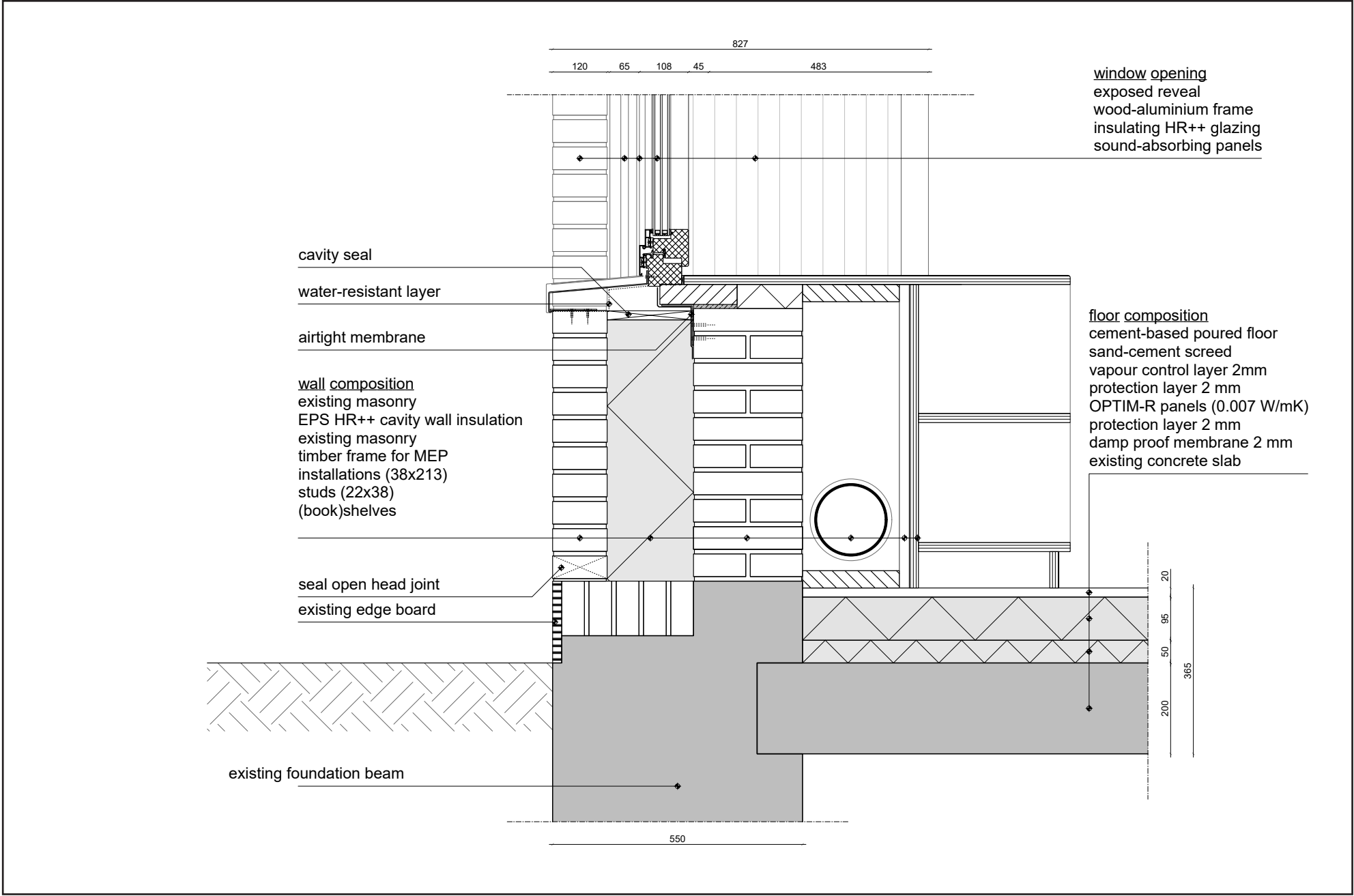


Climate & comfort



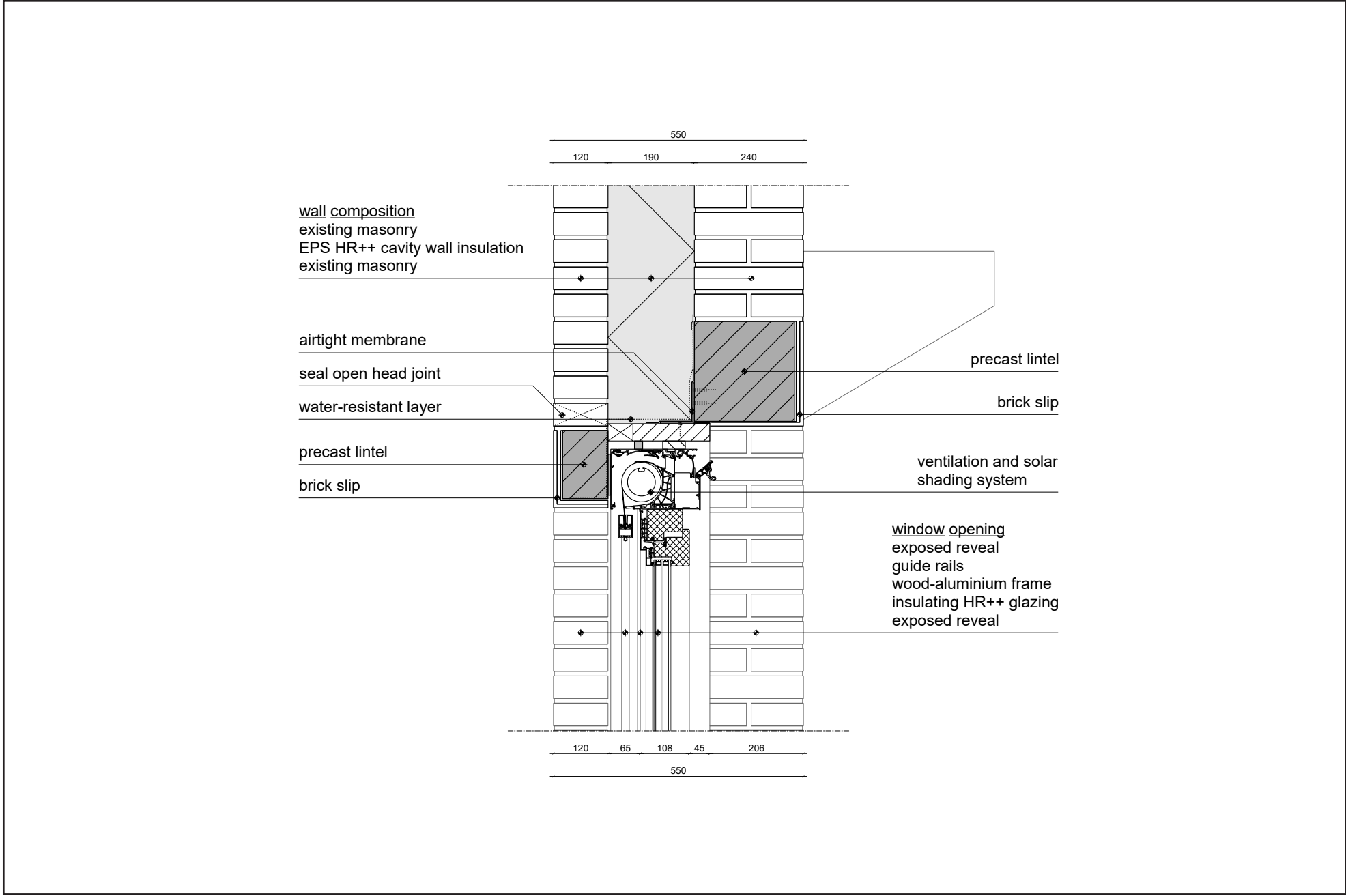
Facade fragment

1:20 (scaled)



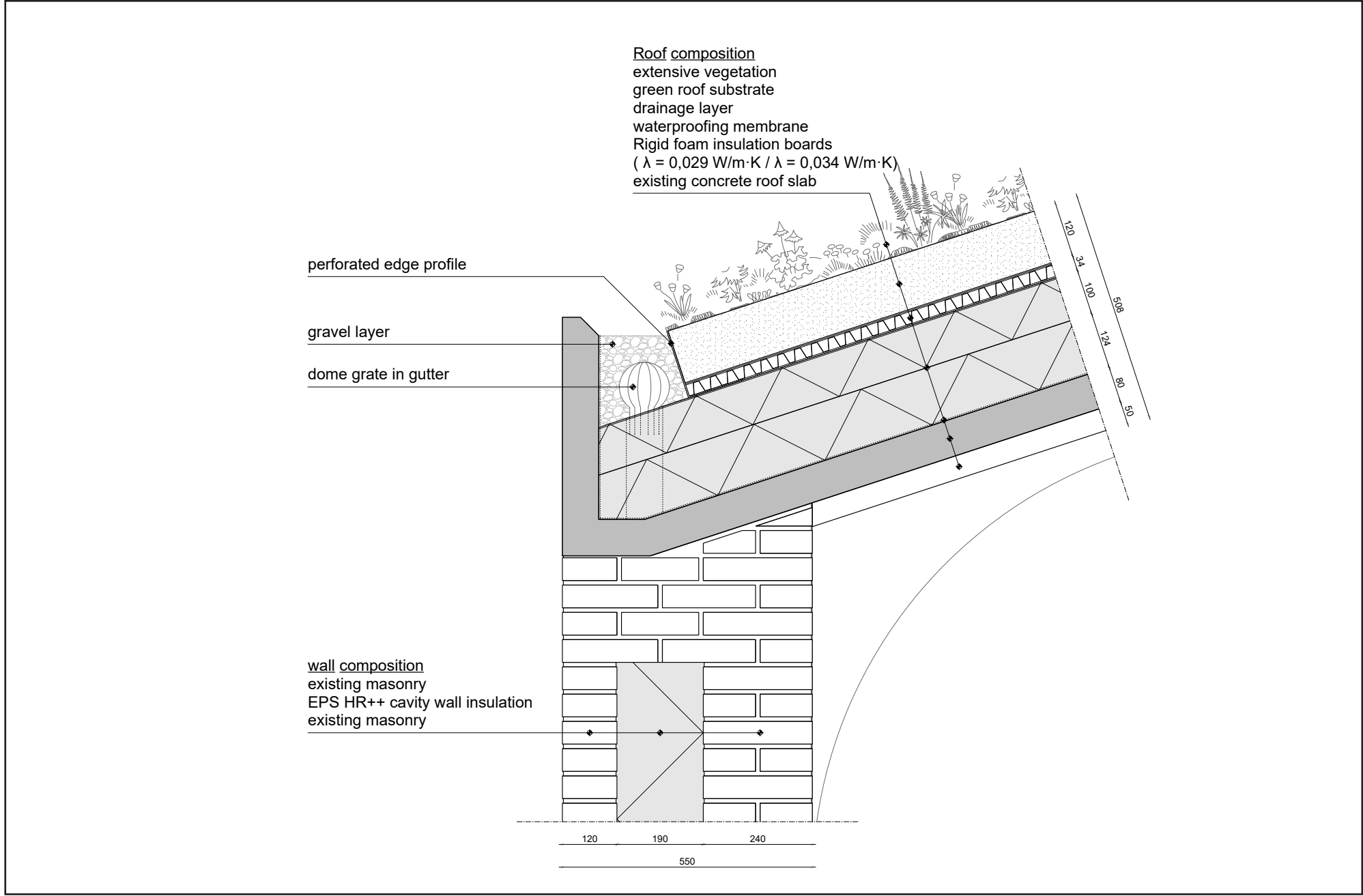
Detail H01

1:10



Detail H02

1:10



Detail H03

1:10



