

**The Risk of Successive Disasters
A Blow-by-Blow Network Vulnerability Analysis**

Oostenbrink, Jorik; Kuipers, Fernando

DOI

[10.23919/IFIPNetworking.2019.8816845](https://doi.org/10.23919/IFIPNetworking.2019.8816845)

Publication date

2019

Document Version

Accepted author manuscript

Published in

IFIP Networking 2019

Citation (APA)

Oostenbrink, J., & Kuipers, F. (2019). The Risk of Successive Disasters: A Blow-by-Blow Network Vulnerability Analysis. In *IFIP Networking 2019* (pp. 1-9). Article 8816845 IEEE. <https://doi.org/10.23919/IFIPNetworking.2019.8816845>

Important note

To cite this publication, please use the final published version (if applicable). Please check the document version above.

Copyright

Other than for strictly personal use, it is not permitted to download, forward or distribute the text or part of it, without the consent of the author(s) and/or copyright holder(s), unless the work is under an open content license such as Creative Commons.

Takedown policy

Please contact us and provide details if you believe this document breaches copyrights. We will remove access to the work immediately and investigate your claim.

The Risk of Successive Disasters: A Blow-by-Blow Network Vulnerability Analysis

Jorik Oostenbrink
Delft University of Technology
J.Oostenbrink@tudelft.nl

Fernando Kuipers
Delft University of Technology
F.A.Kuipers@tudelft.nl

Abstract—It is often assumed that a network will not be struck by multiple disasters in a relatively short period of time; that is, a subsequent disaster will not strike within the recovery phase of a previous disaster. However, recent events have shown that combinations of disasters are not implausible. This realization calls for a new perspective on how we assess the vulnerability of our networks and shows a need for a framework to assess the vulnerability of networks to successive independent disasters.

We propose a network and disaster model capable of modeling a sequence of disasters in time, while taking into account recovery operations. Based on that model, we develop both an exact and a Monte Carlo method to compute the vulnerability of a network to successive disasters. By applying our approach to real empirical disaster data, we show that the probability of a second disaster striking the network during recovery can be significant even for short repair times. Our framework is a first step towards determining the vulnerability of networks to such successive disasters.

I. INTRODUCTION

Disasters can inflict significant damage on networks. The 2011 earthquake near the coast of Japan, for example, caused extensive damage to telecommunications buildings and equipment. The total cost of emergency restoration and reconstruction of the local NTT East network was around 80 billion yen (1 billion dollars at the time) [1]. Large network outages such as these can have a massive impact on our economy and further exacerbate the impact of disasters on society. Hence, efforts into developing new methods to improve the resilience of communication networks to disasters have increased significantly in the last decade.

The rate at which disasters strike an area is typically very low. Therefore, it is commonly assumed that a network will only be affected by single (possibly composite¹) isolated disasters. The probability that two or more independent disasters will occur shortly after one another is seen as negligible and safe to ignore. Recent events have shown that this assumption might not be as rock solid as first thought.

The 2017 Atlantic hurricane season was extremely active and, due to global warming, the intensity of hurricanes is projected to keep increasing [2]. The continental United States was hit by 3 hurricanes (Harvey, Irma, and Nate), of which two were categorized as major hurricanes (Harvey and Irma)

¹Highly correlated disasters such as an earthquake and its aftershocks, can be modeled as a single composite disaster.

[3]. Hurricane Irma hit the East Coast only 16 days after Harvey [4], [5]. Out of the top 5 costliest US mainland tropical cyclones on record, 3 occurred in 2017 [6].

In total, there were 16 billion-dollar weather and climate disaster events in the United States in 2017 [7]. The total cost of these events exceeded 300 billion dollars. For the past five years (2013-2017), the United States has had an average of 11.6 major disasters per year with a cost of more than 1 billion dollars.

Also in 2017, Mexico was hit by two major earthquakes in two weeks (where the second quake is not considered an aftershock of the first [8]), leading to a combined economic loss of nearly 6 billion dollars [9], [10].

Recovering a network after a disaster can take several weeks to months, as a large amount of hardware will need to be replaced or repaired in a potentially very inaccessible area [1]. In the context of this paper, a network is said to be affected by multiple successive disasters if a disaster strikes the network during its recovery from a previous disaster. Depending on the moment in the recovery phase when the next disaster occurs, the total impact and final recovery time will differ significantly.

To increase the resilience of our networks to disasters, it is essential to be able to compute the vulnerability of networks to these disasters. *While previous work has been instrumental in computing the vulnerability of a network to a single disaster, it has not addressed multiple successive disasters.* In this paper, we propose a framework to assess the vulnerability of a network to successive disasters. Our main contributions are as follows:

- We compose a network and disaster model capable of modeling a sequence of disasters in time (Sec. II).
- We develop a method to compute the vulnerability of a network to successive disasters by modeling the network state as a discrete-time Markov chain (Sec. IV). Our methodology allows for arbitrary precision by only computing the effect of at most k successive disasters, with corresponding error bounds. Our results for the Markov chain are subsequently used to derive a faster Monte Carlo method in Sec. V.
- We apply our methods to empirical disaster data in Sec. VI. These experiments show that the probability of a second disaster striking the network during recovery can be significant, even for short repair times.

To the best of our knowledge, we are the first to propose models and methods for assessing the impact of successive disasters on networks, while taking into account recovery operations.

II. NETWORK AND DISASTER MODEL

We model the network as a directed multigraph $G = (V, E, \psi)$ with nodes $v \in V$ connected by links $e \in E$, where $\psi : E \rightarrow V \times V$ and $e \in E$ connects v_1 to v_2 if and only if $\psi(e) = (v_1, v_2)$. Thus, we permit the same pair of nodes to be connected by multiple links. We define a failure set s , where network component $c \in V \cup E$ is functioning if and only if $c \notin s$. In the remainder of the paper, we refer to the failure set of a network as the state of that network.

Given such a network, we are interested in three factors: (1) the number of successive disasters we can expect the network to be struck by, (2) the impact of being struck by one or more disasters, and (3) the total time it takes to fully recover from these disasters. To assess these attributes, we need to model the occurrence of disasters over time.

The occurrence of disasters is inherently unpredictable. A common stochastic model for disaster occurrences [11]–[13], which we will also employ, is the Poisson process. We model all disaster processes as mutually independent Poisson processes and assume we are given a multiset of disaster processes $d = (a_d, \lambda_d) \in D^*$, where $a_d \subseteq V \cup E$ are the components affected by d and λ_d is the rate of d .

If disaster process d triggers at time t , when the network state is s , the new network state at time t will be $s \cup a_d$. That is, all components in a_d fail. We assume at most one disaster can strike the network at any given time t .

The combination of multiple Poisson processes is again Poissonian, with as rate the sum of its component rates. Thus, we can merge all disaster processes that affect the same components without affecting the outcome of our analysis. Hence, we transform the set D^* to

$$D = \{(a_d, \lambda_d) | a_d \neq \emptyset \wedge \lambda_d = \sum_{(a_d, \lambda_d^*) \in D^*} \lambda_d^* > 0\} \quad (1)$$

Let $(T_n)_{n=1}^\infty$ be the ordered sequence such that T_1 is the occurrence time of the first disaster, and for all $n > 1$, T_n is the time between disasters $n - 1$ and n . Let $(D_n)_{n=1}^\infty$ be the ordered sequence of disasters. In other words, the first disaster $D_1 \in D$ occurs at time $T_1 \in \mathbb{R}$, the second $D_2 \in D$ at $T_1 + T_2 \in \mathbb{R}$, etc. Then, for all $n \in \mathbb{N}$:

$$T_n \sim \text{Exp}(\lambda_D) \quad (\text{where } \lambda_D := \sum_{(a_d, \lambda_d) \in D} \lambda_d) \quad (2)$$

the T_n are exponentially distributed with rate λ_D , and D_n and T_n are independent for all $n \in \mathbb{N}$:

$$P(D_n = d \wedge T_n = t) = P(D_n = d)P(T_n = t) \quad (3)$$

A. Example Network and Disasters Instance

To illustrate our network and disaster model, we give an example in Fig. 1. We consider a small triangle network of 3 nodes and 3 links. Its representative set of disasters contains

four (types of) disasters. As each of these disasters affects a different set of components, $D^* = D$. The total disaster rate is $\lambda_D = 1.6$ disasters per year.

A network topology and set of disasters are not sufficient to properly compute the vulnerability of the network to successive disasters, as the impact of these disasters significantly depends on how quickly, and in what order, the network can be repaired. Thus, we also need to include some repair properties.

Our framework can include any repair function, but in the example the following repair rules hold: nodes can be repaired in half a month, while links take a full month to repair, and repairs are performed according to a predetermined priority and cannot be performed concurrently.

III. PROBLEM STATEMENT

We consider a deterministic repair model. We assume that, given a certain starting state, the recovery of the network is fixed (until a new disaster occurs). For example, if disaster 4 of the example instance occurs, all nodes will be damaged. Afterwards, the nodes will be repaired one by one. Thus, unless another disaster occurs during repair, the state of the network will be

- $\{n1, n2, n3\}$ at time 0
- $\{n2, n3\}$ at time $\frac{1}{24}$
- $\{n3\}$ at time $\frac{2}{24}$
- \emptyset at time $\frac{3}{24}$

Generalizing the above example, we define repair functions $r_{s_0} : \mathbb{R}^+ \rightarrow V \cup E$ for each $s_0 \in V \cup E$. $r(t)_{s_0} \in V \cup E$ is the state of the network at time $t + C$, given that the state of the network was s_0 after being struck by a disaster at some time C . We assume the network does not degrade further in the recovery phase:

$$r(b)_{s_0} \subseteq r(a)_{s_0} \quad 0 \leq a \leq b, s_0 \in V \cup E \quad (4)$$

Different repair strategies can be compared by changing the repair functions. Additionally, by increasing the amount of components being repaired simultaneously, the benefits of acquiring more personnel can be assessed and compared to the additional cost in salary.

In the following, we elaborate on our research objectives with respect to three properties.

A. Number of Successive Disasters N

Network operators should decide on how many successive disasters they prepare for. To do so, knowing the probability of at least n successive disasters is essential. In addition, the expected number of successive disasters is also of interest. Hence, our goal is to compute $P(N \geq n)$, as well as $E[N]$.

B. Impact

While knowing the expected number of successive disasters is useful, it is also important to consider their impact. Suppose we have a measure $M : V \times E \rightarrow [0, 1]$ that assigns a value $M(s)$ between 0 (worst case) and 1 (best case) to each state s of the network. We require that $M(a) \leq M(b)$ if $b \subseteq a$.

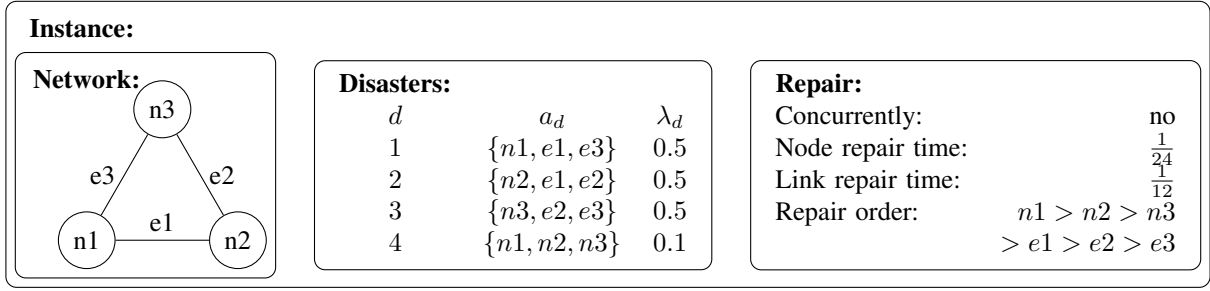


Fig. 1. Example problem instance.

We analyze the minimum value of M during the disaster-and-recovery process. In the one-disaster case, this would simply be the value of M directly after the disaster. Successive disasters, although rare, can have a significantly higher impact on the network than single disasters. Therefore, given a critical value m , we want to compute the probability that the network reaches a state at least as bad as m during the disaster-and-recovery process, $P(M_{\min} \leq m)$, where M_{\min} is the minimum value of M between T_1 and full recovery.

C. Total Time to Full Recovery

Let T_{total} be the total repair time, from the start of the first disaster to the time when all damage from all previous disasters has been repaired. We aim to compute the expected time to full recovery, $E[T_{\text{total}}]$.

IV. ANALYSIS

In this section, we describe methods for computing the properties introduced in the previous section by modeling the state of the network as a Discrete-Time Markov Chain (DTMC).

A. Markov Chain

Let A_n be the state of network G directly after the n th disaster strikes the network. Now, because the disaster processes are independent and memoryless, and the repair function is deterministic,

$$P(A_n = a_n | A_1 = a_1, A_2 = a_2, \dots, A_{n-1} = a_{n-1}) = P(A_n = a_n | A_{n-1} = a_{n-1}) \quad (5)$$

that is, $(A_n)_{n=1}^{\infty}$ satisfy the Markov property and form a (discrete-time) Markov chain.

The transition probabilities of this Markov chain depend on which disaster strikes next, as well as at which stage of the repair process this disaster strikes. By property (3), these two factors are independent. Thus, the transition probabilities can be calculated by summing over all possible disasters $d \in D$:

$$P(A_n = a_n | A_{n-1} = a_{n-1}) = \sum_{d \in D} \frac{\lambda_d}{\lambda_D} (\exp(-\lambda_D \mathcal{M}_{a_{n-1}, d, a_n}) - \exp(-\lambda_D \mathcal{S}_{a_{n-1}, d, a_n})) \quad (6)$$

Here, $\frac{\lambda_d}{\lambda_D}$ is the probability that the network will be struck by disaster $d = (a_d, \lambda_d)$. $[\mathcal{M}_{a_{n-1}, d, a_n}, \mathcal{S}_{a_{n-1}, d, a_n}]$ is the

period of time during which the occurrence of disaster d will result in network state a_n and $\exp(-\lambda_D \mathcal{M}_{a_{n-1}, d, a_n}) - \exp(-\lambda_D \mathcal{S}_{a_{n-1}, d, a_n})$ the probability that the next disaster will occur in this period of time².

We are specifically interested in the chain of network states until full recovery. Thus, we construct an additional Markov chain $(S_n)_{n=1}^{\infty}$ by adding an absorbing state \emptyset to $(A_n)_{n=1}^{\infty}$ such that $S_n = \emptyset$ if and only if the network has been fully repaired.

Let $R_s := \min\{t \geq 0 | r(t)_s = \emptyset\}$ be the time it takes to fully repair the network (assuming no subsequent disasters occur), starting from network state $s \in V \cup E$. The probability that, starting in state s , the network is fully recovered before the next disaster strikes is $\exp(-\lambda_D R_s)$. Therefore, the transition probabilities to the absorbing state \emptyset are

$$P(S_n = \emptyset | S_{n-1} = s_{n-1}) = \begin{cases} 1 & \text{if } s_{n-1} = \emptyset \\ \exp(-\lambda_D R_{s_{n-1}}) & \text{if } s_{n-1} \neq \emptyset \end{cases} \quad (7)$$

and the transition probabilities to all other states are

$$P(S_n = s_n \neq \emptyset | S_{n-1} = s_{n-1}) = \begin{cases} 0 & \text{if } s_{n-1} = \emptyset \\ \sum_{d \in D} \frac{\lambda_d}{\lambda_D} (\exp(-\lambda_D \min(\mathcal{M}_{s_{n-1}, d, s_n}, R_{s_{n-1}})) - \exp(-\lambda_D \min(\mathcal{S}_{s_{n-1}, d, s_n}, R_{s_{n-1}}))) & \text{if } s_{n-1} \neq \emptyset \end{cases} \quad (8)$$

$S_1 = A_1 = a_{D_1}$, so the initial distribution of the Markov chain $(S_n)_{n=1}^{\infty}$ is

$$P(S_1 = s_1) = \begin{cases} \frac{\lambda_d}{\lambda_D} & \exists d \in D \text{ s.t. } a_d = s_1 \\ 0 & \text{otherwise} \end{cases} \quad (9)$$

B. Number of Successive Disasters N

We can now compute the probability $P(N \geq n) = 1 - P(S_n = \emptyset)$ of at least n successive disasters without full recovery. This probability decreases exponentially with n .

Lemma 1:

$$P(N \geq n) \leq (1 - \exp(-\lambda_D R))^{n-1} \quad (10)$$

² $\mathcal{M}_{a_{n-1}, d, a_n}$ is the first time at which $r_{a_{n-1}} \cup a_d = a_n$ (or ∞ if no such time exists), and $\mathcal{S}_{a_{n-1}, d, a_n}$ is the first time after $\mathcal{M}_{a_{n-1}, d, a_n}$ at which $r_{a_{n-1}} \cup a_d \neq a_n$ (or ∞).

where $R := \max_{s \subseteq V \cup E} R_s$.

Proof: See Appendix. ■

Remark 1: If $R_s = R \forall s \in V \cup E - \emptyset$, then

$$P(N \geq n) = (1 - \exp(-\lambda_D R))^{n-1}$$

Typically, $R = \max_{s \subseteq V \cup E} R_s$ will be the amount of time it takes to repair all network components ($R_{V \cup E}$).

Unfortunately, computing $E[N]$ directly is intractable in most cases, as the number of possible states can be as high as $2^{|V|+|E|}$. However, we can approximate (from below) the expected number of successive disasters by only constructing the Markov model for k successive disasters and computing the distribution of S_1 to S_k . The choice of k depends on the required accuracy.

Theorem 1 (Stopping conditions 1): Let $\hat{E}[N] = \sum_{n=1}^k P(N \geq n)$, then

$$0 \leq E[N] - \hat{E}[N] \leq \frac{(1 - \exp(-\lambda_D R))^k}{\exp(-\lambda_D R)} \quad (11)$$

In addition, if $P(N \geq k) \leq \epsilon \frac{\exp(-\lambda_D R)}{1 - \exp(-\lambda_D R)}$, then

$$E[N] - \hat{E}[N] \leq \epsilon \quad (12)$$

Proof: We start by proving (11).

$$\begin{aligned} E[N] - \hat{E}[N] &= \sum_{n=k+1}^{\infty} P(N \geq n) \\ &\leq \sum_{n=k+1}^{\infty} (1 - \exp(-\lambda_D R))^{n-1} \text{ (Lemma 1)} \\ &= \frac{(1 - \exp(-\lambda_D R))^k}{\exp(-\lambda_D R)} \end{aligned}$$

If $P(N \geq k) \leq \epsilon \frac{\exp(-\lambda_D R)}{1 - \exp(-\lambda_D R)}$, then (for $n \geq k$):

$$P(N \geq n) \leq \epsilon \exp(-\lambda_D R) (1 - \exp(-\lambda_D R))^{n-k-1}$$

This can be proved analogously to Lemma 1. But this means that the absolute error

$$\begin{aligned} E[N] - \hat{E}[N] &\leq \sum_{n=k+1}^{\infty} \epsilon \exp(-\lambda_D R) (1 - \exp(-\lambda_D R))^{n-k-1} \\ &= \sum_{n=0}^{\infty} \epsilon \exp(-\lambda_D R) (1 - \exp(-\lambda_D R))^n \\ &= \epsilon \end{aligned}$$

Thus, to guarantee an upper bound on the absolute error, we can either choose the number of steps k beforehand, or test if $P(N \geq k)$ is below the threshold after every iteration, where the latter requires fewer iterations than the former. ■

C. Impact

As M is minimal directly after a disaster, $M_{\min} = \min M(S_n)$. The cumulative distribution function $\hat{P}(M_{\min} \leq m)$ is the hitting probability of $M^{\leq m} := \{s \in V \times E | M(s) \leq m\}$. We can take a similar approach as before and approximate these probabilities as

$$\hat{P}(M_{\min} \leq m) := P(M_{\min}^k \leq m) \quad (13)$$

where $M_{\min}^k = \min_{n \leq k} M(S_n)$.

Suppose we have computed the first k states and corresponding transition probabilities of the Markov chain $(S_n)_{n=1}^{\infty}$. To compute $P(M_{\min}^k \leq m)$ we construct a new Markov chain $(S_n^{\leq m})_{n=1}^{\infty}$ by replacing all $s \in M^{\leq m}$ with a single absorbing state $\mathcal{A}^{\leq m}$. Now,

$$P(M_{\min}^k \leq m) = P(S_k^{\leq m} = \mathcal{A}^{\leq m}) \quad (14)$$

Theorem 2 (Stopping conditions 2): Let

$$\hat{P}(M_{\min} \leq m) = P(M_{\min}^k \leq m) = P(S_k^{\leq m} = \mathcal{A}^{\leq m})$$

Then

$$\begin{aligned} 0 \leq P(M_{\min} \leq m) - \hat{P}(M_{\min} \leq m) &\leq \\ 1 - \hat{P}(M_{\min} \leq m) - P(S_k^{\leq m} = \emptyset) &\leq P(N \geq k) \\ &\leq (1 - \exp(-\lambda_D R))^{k-1} \end{aligned} \quad (15)$$

Proof: If $m \geq 1$, then

$P(M_{\min} \leq m) = \hat{P}(M_{\min} \leq m) = 1$, so we assume that $m < 1$.

In this case

$$\begin{aligned} P(M_{\min} \leq m) - \hat{P}(M_{\min} \leq m) &= P(M_{\min} \leq m) - P(M_{\min}^k \leq m) \\ &= P(M_{\min} \leq m \wedge M_{\min}^k > m) \\ &\leq 1 - P(M_{\min}^k \leq m) - P(S_k^{\leq m} = \emptyset) \\ &\leq P(N \geq k) \end{aligned}$$

D. Total Time to Full Recovery

The total time to full recovery, or the total repair time, T_{total} , is equivalent to the sum of the time spent on repair in all states of $(S_n)_{n=1}^{\infty}$:

$$T_{\text{total}} = \sum_{n=1}^{\infty} \mathcal{R}_n \quad (16)$$

where \mathcal{R}_n is the time spent on repairs between the n th and $(n+1)$ th disaster. Thus, \mathcal{R}_n is 0 if $S_n = \emptyset$ and \mathcal{R}_n is the minimum between the total repair time of failures S_n and the time till the next disaster otherwise:

$$\mathcal{R}_n = \begin{cases} 0 & \text{if } S_n = \emptyset \\ \min(R_{S_n}, T_{n+1}) & \text{if } S_n \neq \emptyset \end{cases} \quad (17)$$

The expected value of \mathcal{R}_n is

$$\begin{aligned}
E[\mathcal{R}_n] &= \sum_{s \neq \emptyset} P(S_n = s) \left(\int_0^{R_s} \lambda_D \exp(-\lambda_D t) dt + \exp(-\lambda_D R_s) R_s \right) \\
&= \sum_{s \neq \emptyset} P(S_n = s) \left(\frac{1}{\lambda_D} (1 - \exp(-\lambda_D R_s)) \right) \\
&= \frac{1}{\lambda_D} \sum_{s \neq \emptyset} P(S_n = s) (1 - \exp(-\lambda_D R_s))
\end{aligned} \tag{18}$$

As before, we propose approximating $E[T_{\text{total}}]$ by truncating (16). That is, we approximate $E[T_{\text{total}}]$ by summing the expected values of \mathcal{R}_1 to \mathcal{R}_k , which only requires the distributions of S_1 to S_k .

Theorem 3 (Stopping conditions 3): Let $\hat{E}[T_{\text{total}}] := \sum_{n=1}^k E[\mathcal{R}_n]$, then

$$0 \leq E[T_{\text{total}}] - \hat{E}[T_{\text{total}}] \leq \frac{(1 - \exp(-\lambda_D R))^k}{\lambda_D \exp(-\lambda_D R)} \tag{19}$$

In addition, if $P(N \geq k) \leq \epsilon \lambda_D \frac{\exp(-\lambda_D R)}{1 - \exp(-\lambda_D R)}$, then

$$E[T_{\text{total}}] - \hat{E}[T_{\text{total}}] \leq \epsilon \tag{20}$$

Proof: By the monotone convergence theorem,

$$E[T_{\text{total}}] = E\left[\sum_{n=1}^{\infty} \mathcal{R}_n\right] = \sum_{n=1}^{\infty} E[\mathcal{R}_n]$$

In addition, by (18), $E[\mathcal{R}_n] \leq \frac{1}{\lambda_D} P(N \geq n)$.

Now, the proof follows analogously to that of Theorem 1. \blacksquare

V. MONTE CARLO

The Markov chain in Sec. IV has a large number of states. Most of these states have a very small probability of ever being reached. However, we can not simply ignore these states, as the aggregate of their probabilities is relatively high. This is a perfect use case for Monte Carlo simulations.

We propose an efficient Monte Carlo method, based on the results from Sec. IV, for estimating $P(N \geq n)$, $E[N]$, $E[M_{\text{min}}]$, and $E[T_{\text{total}}]$. The method is given in detail in Fig. 2. The main idea is to simulate many sequences of successive disasters simultaneously, and cut off these sequences when the error bounds on the values of interest are small enough. As all sequences are cut off after the same number n of successive disasters, we only allow transitions to subsequent disaster states and keep track of the probability of reaching the absorbing state separately. This allows us to closer estimate the values of interest.

In essence, we approximate the lower bounds described in Sec. IV. By Theorems 1 to 3, these lower bounds, combined with $P(N \leq n)$, give us the upper bounds as well. The method can be tuned with respect to two values: Stopping condition

Input: Number of simulations η , and bound β

Output: $\hat{P}(N \geq n)$, $\hat{E}[N]$, $\hat{P}(M_{\text{min}} \leq m)$, $\hat{E}[M_{\text{min}}]$, and $\hat{E}[T_{\text{total}}]$

Let $\text{State}_{i,j}$ be the network state in simulation i after the j th disaster

$\hat{P}(N \geq 1) \leftarrow 1$

$\hat{P}(M_{\text{min}} \leq m) \leftarrow 0$

for $i = 1$ to $i = \eta$ **do**

 Sample starting state $\text{State}_{i,1}$ from S_1

$P_{i,1} \leftarrow 1$

$M_{i,1} \leftarrow M(\text{State}_{i,1})$

if $M_{i,i} \leq m$ **then**

$\hat{P}(M_{\text{min}} \leq m) \leftarrow \hat{P}(M_{\text{min}} \leq m) + \frac{1}{\eta}$

end if

end for

$n \leftarrow 1$

while $\hat{P}(N \geq n) > \beta$ **do**

$n \leftarrow n + 1$

for $i = 1$ to $i = \eta$ **do**

$P(S_n = \emptyset) \leftarrow \exp(-\lambda_D R_{\text{State}_{i,n-1}})$

$P_{i,n} \leftarrow P_{i,n-1} (1 - P(S_n = \emptyset))$

 Sample next disaster occurrence time T_n , conditioned on $T_n < R_{\text{State}_{i,n-1}}$

 Compute $\text{State}_{i,n}$, given occurrence time T_n

$M_{i,n} \leftarrow \min(M_{i,n-1}, M(\text{State}_{i,n}))$

if $M_{i,n-1} > m$ and $M_{i,n} \leq m$ **then**

$\hat{P}(M_{\text{min}} \leq m) \leftarrow \hat{P}(M_{\text{min}} \leq m) + \frac{1}{\eta} P_{i,n}$

end if

end for

$\hat{P}(N \geq n) \leftarrow \frac{1}{\eta} \sum_{i=1}^{\eta} P_{i,n}$

end while

$\hat{E}[N] \leftarrow \sum_{j=1}^n \hat{P}(N \geq j)$

$\hat{E}[M_{\text{min}}] \leftarrow \sum_{i=1}^{\eta} \sum_{j=1}^{n-1} P_{i,j} \exp(-\lambda_D R_{\text{State}_{i,j}}) M_{i,j}$

$\hat{E}[M_{\text{min}}] \leftarrow \frac{1}{\eta} \hat{E}[M_{\text{min}}] + \frac{1}{\eta} \sum_{i=1}^{\eta} P_{i,n} M_{i,n}$

$\hat{E}[T_{\text{total}}] \leftarrow \frac{1}{\eta \lambda_D} \sum_{i=1}^{\eta} \sum_{j=1}^n P_{i,j} (1 - \exp(-\lambda_D R_{\text{State}_{i,j}}))$

Fig. 2. Monte Carlo method for estimating $P(N \geq n)$, $E[N]$, $P(M_{\text{min}} \leq m)$, $E[M_{\text{min}}]$, and $E[T_{\text{total}}]$.

β gives the maximum difference between the approximated bounds, while the number of simulations η can be adjusted to affect the accuracy of the approximation of the bounds itself. When the probability of subsequent disasters is too high, lowering β can keep computation times manageable by reducing the number of successive disasters taken into account.

VI. EXPERIMENTS

To demonstrate our methods, we apply them to a version of the Sinet topology (Fig. 3) from the Topology Zoo [14], where all nodes without geographical information have been removed. This backbone network of 47 nodes connected by

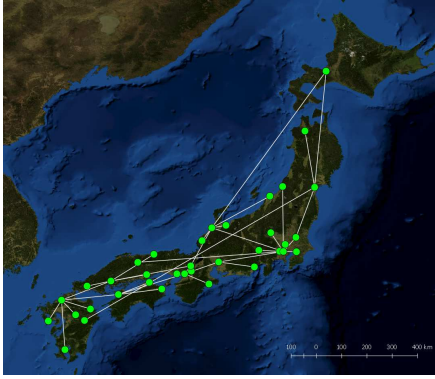


Fig. 3. Sinet Topology.

49 bidirectional links is located in Japan, and hence is vulnerable to a variety of different disasters such as earthquakes, landslides, and typhoons. All experiments are performed on an Intel Xeon Processor E5-2620 v3.

A. Dataset

We create a set of disasters D^* by combining datasets from two sources: (1) the Japan Seismic Hazard Information Station (J-SHIS) [15] and (2) the International Best Track Archive for Climate Stewardship (IBTrACS) [16].

1) *Earthquake Data (J-SHIS)*: The National Research Institute for Earth Science and Disaster Resilience (NIED) provides a large amount of data on Japanese earthquakes through the Japan Seismic Hazard Information Station (J-SHIS). We use the 2016 version of this dataset. J-SHIS provides maps of the effect of a significant number of modeled earthquakes: the Scenario Earthquake Shaking Maps. These maps give, among other data, the JMA seismic intensities for each affected Divided Quarter Grid Square [17] cell in Japan.

We create a disaster process $d \in D^*$ for each earthquake scenario. The affected components a_d of each scenario are the set of network components that intersect (or lie within) one or more grid cells with a seismic intensity larger than or equal to 5.5. The disaster rates λ_d are the inverse of the mean recurrence intervals of each fault, divided by the total number of scenarios of the fault.

2) *Tropical Cyclone Data (IBTrACS)*: IBTrACS is a collection of tropical cyclone data from numerous agencies maintained by the National Centers for Environmental Information (NCEI) of the (U.S.) National Oceanic and Atmospheric Administration (NOAA). In our experiments, we use IBTrACS beta version 4 and limit ourselves to cyclones from 1980 to 2017. We filter out any storms that never reached wind speeds of 74 mph, leaving us with a set of 1649 historical storms. As disaster area, we would prefer to use the regions that reached 74 mph winds. Unfortunately, this information is only available for some storms (in the form of the radius maximum extent per quadrant). Therefore, we apply the concept of the hurricane strike circle instead.

A strike circle is a circle with diameter 231.5 km, centered 23.15 km to the right of the hurricane center (based on its

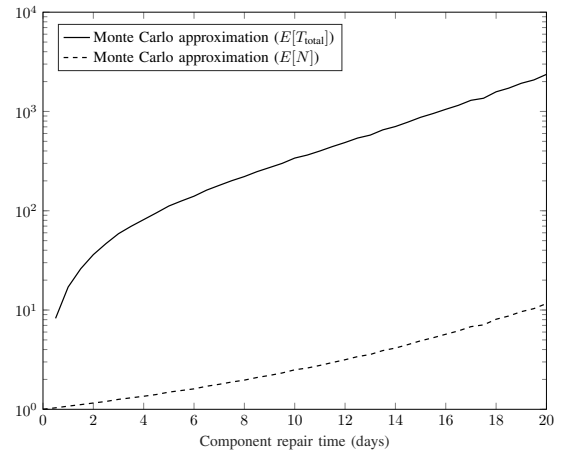


Fig. 4. Approximations of the expected number of successive disasters, $E[N]$, and the expected time to full recovery, $E[T_{\text{total}}]$, against the component repair time.

direction of motion). It is meant to depict the typical extent of hurricane force winds [18].

For each typhoon-level storm, we find the first registered center point p_a where the storm had a maximum sustained wind speed of at least 74 mph, as well as the last center point p_b with at least 74 mph maximum sustained wind speed. Then, we select the range of center points from p_a up to and including the first registered center point after p_b . Connecting these points forms a track. a_d is the selection of all components within or intersecting a strike circle of any point (including points on the line segment between registered center points) on this track. The resulting set of disasters includes many storms that do not affect any components of Sinet (e.g. hurricanes striking the U.S.). However, this is not an issue, as empty a_d are filtered out when generating D .

The final set D^* is the union of the earthquake scenarios and historical tropical cyclones. This set of 2304 potential disasters can be reduced to a set D of 160 unique scenarios affecting Sinet. The total rate λ_D of these scenarios is 1.648 per year.

B. The Effect of Component Repair Time

We first examine the effect of repair time. In a one-disaster scenario, the relation between component repair time and total repair time is simple: Ignoring start-up time, if repairing components takes twice as long, the total time to full recovery will also take twice as long. However, if we take the possibility of multiple disasters into account, we encounter another effect of repair time: When the time to repair the network increases, so does the probability that the network will be struck by a subsequent disaster during recovery. These subsequent disasters further increase the expected total recovery time on top of the increase in component repair time itself. Our experiments show this effect can be significant.

We consider a situation where components are repaired one-by-one, using a greedy strategy that tries to maximize the number of connected node-pairs. We vary the time it takes

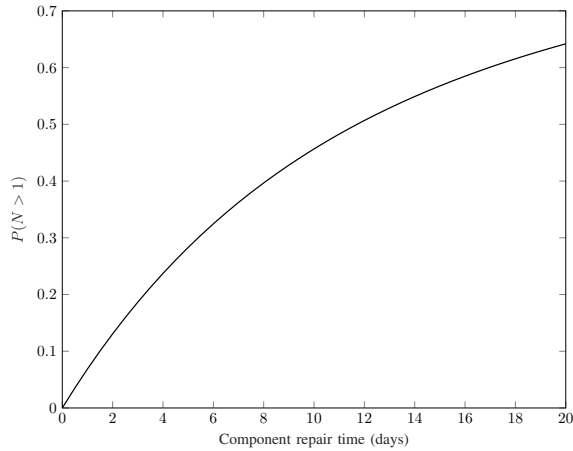


Fig. 5. The probability of a successive disaster during recovery of the first disaster, $P(N > 1)$, against the component repair time. Exact.

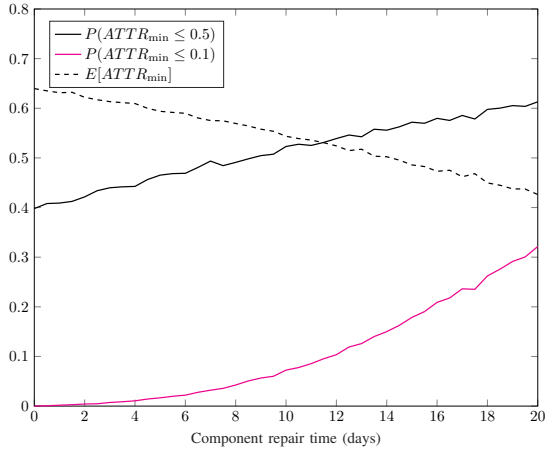


Fig. 6. Approximations of $P(\text{ATTR}_{\min} \leq 0.5)$, $P(\text{ATTR}_{\min} \leq 0.1)$, and $E[\text{ATTR}_{\min}]$ against the component repair time. Computed by Monte Carlo simulations.

to repair a component between 0 and 20 days. As we would need to compute a large number of steps of the DTMC to get precise results for higher repair times, we approximate all results. We use $\eta = 10,000$ simulations for each Monte Carlo approximation and set $\beta = 0.05$.

The expected number of successive disasters and the expected time to full network recovery are plotted in Fig. 4. $E[N]$ rapidly increases with the (component) repair time. Although, as could be expected, for more reasonable repair times³ $E[N]$ remains below 2. Due to the influence of subsequent disasters, $E[T_{\text{total}}]$ grows exponentially in the component repair time.

Fig. 5 shows the probability of a subsequent disaster during recovery of the first disaster, $P(N > 1)$. This value can be computed exactly by computing one step of the DTMC. Interestingly, even with a component repair time of less than 5

³When components are repaired non-concurrently and the component repair time is 20 days, it can take more than 5 years to fully repair Sinet.

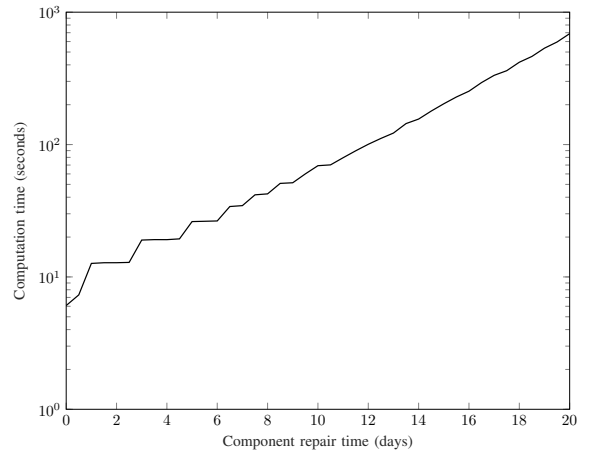


Fig. 7. Computation time of the Monte Carlo approximations against the component repair time.

days, the probability of facing more than 1 disaster is relatively high. Probabilities of around 0.2, or even 0.1, are significant enough to stop ignoring the possibility of subsequent disasters.

Next, we consider the connection between repair time and network performance. To do so, we analyze the minimum value of the Average Two-Terminal Reliability (ATTR) survivability measure in the period after the first disaster strikes and before all damage has been repaired.

The ATTR of a network is the number of connected node pairs, divided by the total number of node pairs. We choose this metric because it is of vital importance that as many areas remain connected as possible after a disaster.

In Fig. 6, we have plotted $E[\text{ATTR}_{\min}]$ against the component repair time. While the repair time does affect the expected minimum ATTR, this effect is much smaller than that on the expected time to full recovery.

A similar outcome can be observed when computing the probability that at most half of all node pairs remain connected (Fig. 6). However, while $P(\text{ATTR}_{\min} \leq 0.5)$ increases relatively slowly with the repair time, $P(\text{ATTR}_{\min} \leq 0.1)$ increases much faster.

Fig. 7 shows the computation time of the Monte Carlo method (parallelized to 11 threads) against the component repair time. The computation time grows exponentially in the component repair time, as the method has to simulate longer sequences of disasters to keep satisfying the stopping condition. Nevertheless, even for unrealistically large $E[N]$ and $P(N \geq 1)$, the computation time is more than manageable.

The repair time has a significant effect on both the total recovery time and ATTR during the recovery process. Thus, reducing it, by repairing more components at once or by decreasing the time it takes to repair individual components, should be a high priority.

C. Concurrent Repair

To evaluate our methods, we consider a use-case in which multiple components can be repaired simultaneously. In addi-

TABLE I

COMPARISON OF THE EXACT RESULTS FROM SEC. IV AND THE RESULTS OF THE MONTE CARLO METHOD FROM SEC. V. THE EXACT COLUMN SHOWS THE LOWER AND UPPER BOUNDS OF THE VALUE. THE RUNTIME OF THE EXACT COMPUTATION ONLY INCLUDES THE TIME TO COMPUTE S_1 TO S_k . THE MONTE CARLO APPROXIMATION IS OBTAINED BY PERFORMING 50,000 MONTE CARLO SIMULATIONS WITH STOPPING CONDITION $\hat{P}(N \geq n) \leq 0.0001 \frac{\exp(-\lambda_D R)}{1 - \exp(-\lambda_D R)}$.

	Exact	Monte Carlo
$E[N]$	1.0850 - 1.0851	1.0851
$P(N > 1)$	0.0763	0.0763
$P(\text{ATTR}_{\min} \leq 0.5)$	0.3834 - 0.3834	0.3825
$P(\text{ATTR}_{\min} \leq 0.1)$	0.0021 - 0.0022	0.0021
$E[T_{\text{total}}]$ (days)	19.4576 - 19.4674	19.4816
1-Threaded Computation Time (s)	1,556.7398	120.1504

tion, we assume only nodes are damaged by the disasters. As Sinet is a backbone network and individual nodes are connected to many additional network components (which will also be affected by the disaster) that are not included in our topology, we assume repairing a single node takes half a month. However, by sending out multiple repair crews, 10 nodes can be repaired simultaneously.

To compute exact lower and upper bounds of the properties of interest, we construct the DTMC up to 5 successive disasters. By applying the methods from Sec. IV and limiting ourselves to 5 successive disasters, we obtain lower bounds of $E[N]$, $P(\text{ATTR}_{\min} \leq m)$, and $E[T_{\text{total}}]$. By computing the upper bound on the error, applying Theorems 1, 2, and 3, we can obtain the upper bounds on these values as well.

We approximate the lower bounds of these properties with our Monte Carlo method from Sec. V. We set the number of simulations η to 10,000, and choose β such that the difference between the approximation of the lower and upper bounds of $E[N]$ is smaller or equal to $\epsilon = 0.0001$. That is, the method stops if $\hat{P}(N \leq n) \leq \beta = 0.0001 \frac{\exp(-\lambda_D R)}{1 - \exp(-\lambda_D R)}$. The resulting values can be found in Table I.

The computation time of the Monte Carlo method is much lower than that of the exact bounds. In addition, the Monte Carlo approximations are quite accurate. Thus, this method can be a good alternative for the exact approach, especially when the network or repair times are very large.

The probability of a second disaster striking the network during repair of a previous disaster has a low, yet still significant, probability (0.0763), but a very high impact. It is disastrous to the network if more than 90% of all node pairs lose their connection. While this outcome is not even considered feasible when only considering a single disaster, our successive disaster model shows that it is possible, although with low probability.

VII. RELATED WORK

The amount of research into assessing the impact of multiple regional failures is rather sparse. In [13], disaster occurrences were characterized by independent Poisson processes. However, in contrast to our framework, the methodology of [13] did

not consider the difference between single or multiple disaster occurrences in a short period of time.

When the possibility of more than one regional failure is considered, it is often in the form of deliberate, simultaneous attacks. In this case, the goal is to find a set of attack locations where the damage to the network is maximized [19]–[21] or to compute the minimum number of regional failures required to disconnect two nodes [22]–[24].

In [25], Neumayer and Modiano showed how to compute the average two-terminal reliability after a randomly located disk or line cut. They briefly discussed how to extend their approach to multiple simultaneous events.

Regional failures can be modeled as Shared-Risk Link Groups (SRLG). SRLGs reflect possible combinations of links that can fail simultaneously, for example due to disasters or cable cuts. Yang et al. considered the problem of finding a set of at most k paths with an availability of at least δ under, potentially multiple simultaneous, single link failures and SRLG failures [26]. As this problem is NP-hard, they provided both a heuristic and an integer non-linear program formulation to find these paths.

Rahnamay-Naeini et al. proposed a model for multiple correlated random disasters, based on spatial point processes [27]. Using their model, Monte Carlo simulations can be performed by randomly generating a fixed number of disaster events and their effects. The model from [27] does not take into account network repair or disaster processes over time.

Heegaard and Trivedi considered the recovery of a network after a single pre-selected disaster [28]. They proposed a detailed model of the performance of a network directly after the failure event and during subsequent recovery operations.

To the best of our knowledge, none of the work on multiple regional failure events consider time or network repair.

VIII. CONCLUSION

Recently, natural disasters have struck the same area shortly after one another on a number of occasions. Successive disasters like these are rare, but can inflict a massive amount of damage on the network. Consequently, the risk of successive disasters is significant and should be considered when evaluating the vulnerability of a network.

To this end, we have composed a network and disaster model capable of modeling a sequence of disasters in time and applied this model to construct a discrete-time Markov chain of the network state after one or more successive disasters. We have shown how to adopt this Markov chain to compute with arbitrary precision (1) the probability of more than one successive disaster, (2) the expected number of successive disasters, and (3) the expected time to fully recover from these disasters. Analogously to the expected survivability metrics in single-disaster models, we considered the minimum value of a metric during the disaster-and-recovery process.

Building upon these results, we have developed a Monte Carlo method that can compute the vulnerability of networks to disasters in a matter of minutes. Since these types of analyses only need to be conducted sporadically and can be

done well in advance, this computation time can be considered to be very fast.

We have applied our model to empirical disaster data. Our experiments show that when considering successive disasters, the expected time to complete recovery grows exponentially in the time it takes to repair a network component. Additionally, the probability of a second disaster striking the network during recovery can be significant, even for short repair times. Our framework is a first step towards determining the vulnerability of a network to these successive disasters.

REFERENCES

- [1] M. Kazama and T. Noda, "Damage statistics (summary of the 2011 off the Pacific coast of Tohoku earthquake damage)," *Soils and Foundations*, vol. 52, no. 5, pp. 780 – 792, 2012, special Issue on Geotechnical Aspects of the 2011 off the Pacific Coast of Tohoku Earthquake. [Online]. Available: <http://www.sciencedirect.com/science/article/pii/S0038080612000947>
- [2] "Climate change impacts in the United States: The third national climate assessment," U.S. Global Change Research Program, 2014. [Online]. Available: <https://nca2014.globalchange.gov/>
- [3] P. J. Klotzbach and M. M. Bell, "Summary of 2017 Atlantic tropical cyclone activity and verification of authors' seasonal and two-week forecasts," Department of Atmospheric Science - Colorado State University, November 2017. [Online]. Available: <http://tropical.colostate.edu/media/sites/111/2017/11/2017-11.pdf>
- [4] E. S. Blake and D. A. Zelinsky, "Tropical cyclone report Hurricane Harvey," National Hurricane Center, May 2018. [Online]. Available: https://www.nhc.noaa.gov/data/tcr/AL092017_Harvey.pdf
- [5] J. P. Cangialosi, A. S. Latta, and R. Berg, "Tropical cyclone report Hurricane Irma," National Hurricane Center, June 2018. [Online]. Available: https://www.nhc.noaa.gov/data/tcr/AL112017_Irma.pdf
- [6] "Costliest U.S. tropical cyclones tables updated," NHC, 2017. [Online]. Available: <https://www.nhc.noaa.gov/news/UpdatedCostliest.pdf>
- [7] "U.S. billion-dollar weather and climate disasters," NOAA National Centers for Environmental Information (NCEI), 2018. [Online]. Available: <https://www.ncdc.noaa.gov/billions/>
- [8] A. Witze, "Pair of deadly Mexico quakes puzzles scientists," Nature News, September 2017. [Online]. Available: <https://www.nature.com/news/pair-of-deadly-mexico-quakes-puzzles-scientists-1.22650>
- [9] D. Agren, N. Lakhani, R. Carroll, and S. Jones, "At least 225 dead after powerful earthquake hits central Mexico," The Guardian, September 2017. [Online]. Available: <https://www.theguardian.com/world/2017/sep/19/mexico-city-earthquake-anniversary-1985>
- [10] "Weather, climate & catastrophe insight," Aon Benfield, 2017. [Online]. Available: <http://thoughtleadership.aonbenfield.com/Documents/20180124-ab-if-annual-report-weather-climate-2017.pdf>
- [11] J. W. Baker, "An introduction to probabilistic seismic hazard analysis," *Report for the US Nuclear Regulatory Commission*, vol. 1, 2008.
- [12] R. W. Katz, "Stochastic modeling of hurricane damage," *Journal of Applied Meteorology*, vol. 41, no. 7, pp. 754–762, 2002.
- [13] F. Iqbal and F. Kuipers, "On centrality-related disaster vulnerability of network regions," in *Resilient Networks Design and Modeling (RNDM), 2017 9th International Workshop on*. IEEE, 2017, pp. 1–6.
- [14] S. Knight, H. Nguyen, N. Falkner, R. Bowden, and M. Roughan, "The internet topology zoo," *Selected Areas in Communications, IEEE Journal on*, vol. 29, no. 9, pp. 1765–1775, october 2011.
- [15] J-SHIS. [Online]. Available: <http://www.j-shis.bosai.go.jp/en/>
- [16] K. R. Knapp, M. C. Kruk, D. H. Levinson, H. J. Diamond, and C. J. Neumann, "The international best track archive for climate stewardship (IBTrACS)," *Bulletin of the American Meteorological Society*, vol. 91, no. 3, pp. 363–376, 2010. [Online]. Available: <https://doi.org/10.1175/2009BAMS2755.1>
- [17] *Standard Grid Square and Grid Square Code Used for the Statistics*, the Administrative Management Agency Announcement 143, July 1973. [Online]. Available: www.stat.go.jp/english/data/mesh/02.html
- [18] (2017, June) Glossary of NHC terms. [Online]. Available: www.nhc.noaa.gov/aboutgloss.shtml
- [19] P. K. Agarwal, A. Efrat, S. K. Ganjugunte, D. Hay, S. Sankaraman, and G. Zussman, "Network vulnerability to single, multiple, and probabilistic physical attacks," in *Proceedings - IEEE Military Communications Conference MILCOM*, 2010, pp. 1824–1829.
- [20] —, "The resilience of WDM networks to probabilistic geographical failures," *IEEE/ACM Transactions on Networking*, vol. 21, no. 5, pp. 1525–1538, 2013.
- [21] K. M. Sullivan and J. Cole Smith, "Exact algorithms for solving a Euclidean maximum flow network interdiction problem," *Networks*, vol. 64, no. 2, pp. 109–124, 2014.
- [22] D. Bienstock, "Some generalized max-flow min-cut problems in the plane," *Mathematics of Operations Research*, vol. 16, no. 2, pp. 310–333, 1991.
- [23] S. Neumayer, A. Efrat, and E. Modiano, "Geographic max-flow and min-cut under a circular disk failure model," *Computer Networks*, vol. 77, pp. 117–127, 2015.
- [24] A. Sen, S. Murthy, and S. Banerjee, "Region-based connectivity - A new paradigm for design of fault-tolerant networks," in *2009 International Conference on High Performance Switching and Routing, HPSR 2009*, 2009.
- [25] S. Neumayer and E. Modiano, "Network reliability under geographically correlated line and disk failure models," *Computer Networks*, vol. 94, pp. 14 – 28, 2016. [Online]. Available: <http://www.sciencedirect.com/science/article/pii/S1389128615004740>
- [26] S. Yang, S. Trajanovski, and F. A. Kuipers, "Availability-based path selection and network vulnerability assessment," *Networks*, vol. 66, no. 4, pp. 306–319, dec 2015. [Online]. Available: <http://doi.wiley.com/10.1002/net.21652>
- [27] M. Rahnamay-Naeini, J. E. Pezoa, G. Azar, N. Ghani, and M. M. Hayat, "Modeling stochastic correlated failures and their effects on network reliability," in *Proceedings - International Conference on Computer Communications and Networks, ICCCN*, 2011.
- [28] P. E. Heegaard and K. S. Trivedi, "Network survivability modeling," *Computer Networks*, vol. 53, no. 8, pp. 1215–1234, jun 2009. [Online]. Available: <http://linkinghub.elsevier.com/retrieve/pii/S1389128609000425>

APPENDIX A PROOF OF LEMMA 1

By induction:

Trivially, $P(N \geq 1) = 1 \leq (1 - \exp(-\lambda_D R))^0$.

Now, suppose

$$\forall k < n \quad P(N \geq k) \leq (1 - \exp(-\lambda_D R))^{k-1},$$

then

$$\begin{aligned} P(N \geq n) &= P(N \geq n-1)P(N \geq n|N \geq n-1) \\ &\leq (1 - \exp(-\lambda_D R))^{n-2}P(N \geq n|N \geq n-1) \end{aligned}$$

By direct application of (7):

$$\begin{aligned} P(N \geq n|N \geq n-1) &= 1 - P(S_n = \emptyset|S_{n-1} \neq \emptyset) \\ &= 1 - \frac{1}{P(S_{n-1} \neq \emptyset)} \sum_{s \neq \emptyset} P(S_{n-1} = s)P(S_n = \emptyset|S_{n-1} = s) \\ &= 1 - \frac{1}{P(S_{n-1} \neq \emptyset)} \sum_{s \neq \emptyset} P(S_{n-1} = s) \exp(-\lambda_D R_s) \\ &\leq 1 - \frac{1}{P(S_{n-1} \neq \emptyset)} \sum_{s \neq \emptyset} P(S_{n-1} = s) \exp(-\lambda_D R) \\ &= (1 - \exp(-\lambda_D R)) \end{aligned}$$

So,

$$P(N \geq n) \leq (1 - \exp(-\lambda_D R))^{n-1}$$

■