

HEALING BY TRANSFORMING CREATING THE EMPOWERED HEALING ENVIRONMENT

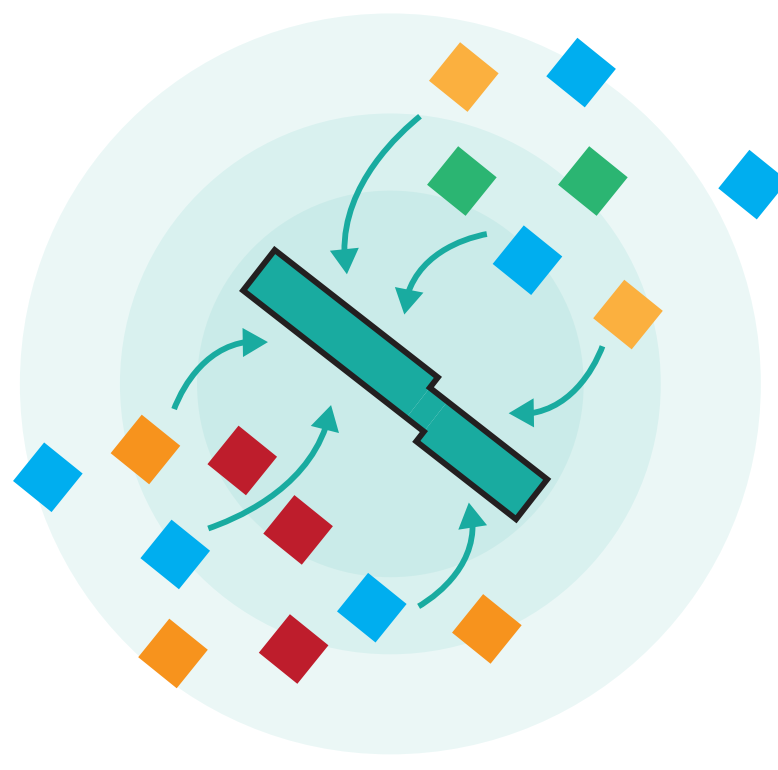
Jaap Koopmans / 4555953

//Graduation studio 2022-2023:
Architectural Engineering

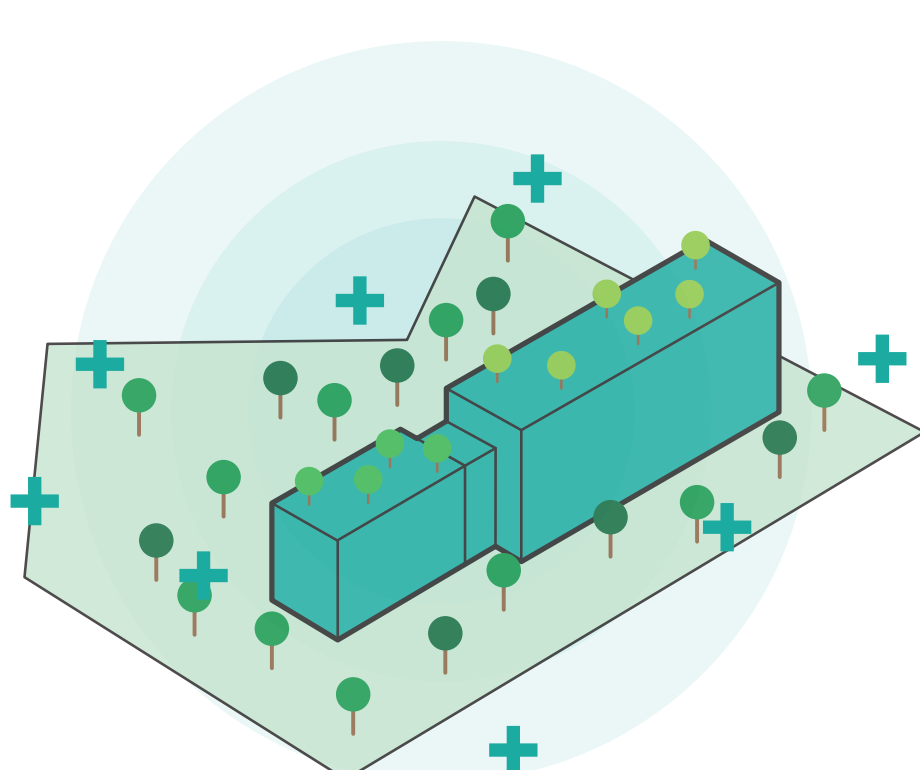
//Tutors:
Anne Snijders (architecture)
Paddy Tomesen (building technology)
Andy Jenkins (research tutor)

Overall design question:

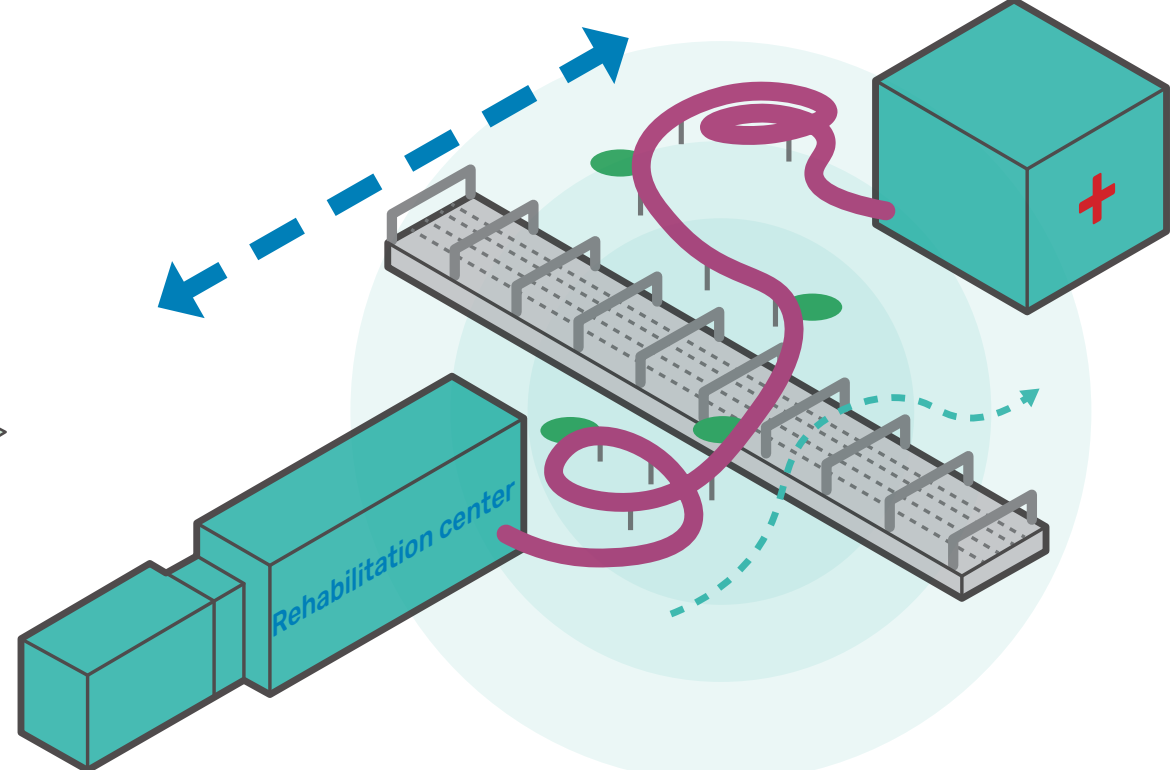
In what way can the healing environment as an user-centred design approach of a rehabilitation hotel within an urban context be of value for the (medical) well-being of the users, the surrounding context and all its inhabitants?



Small-scale functional differentiation for locals



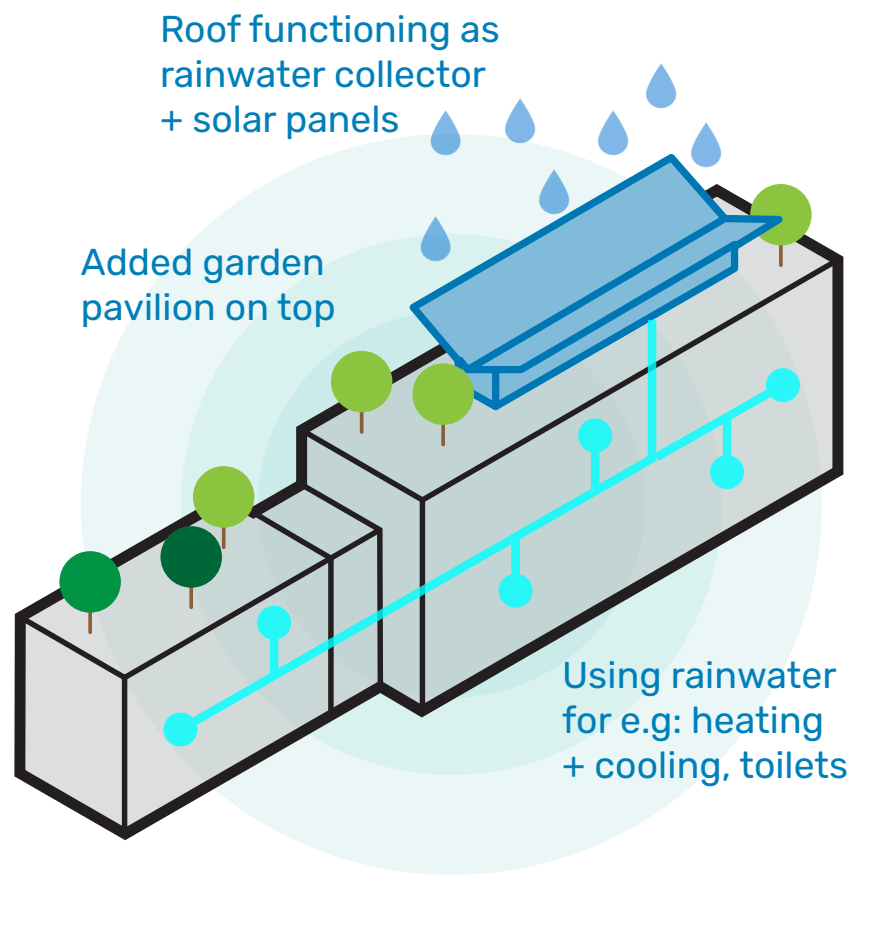
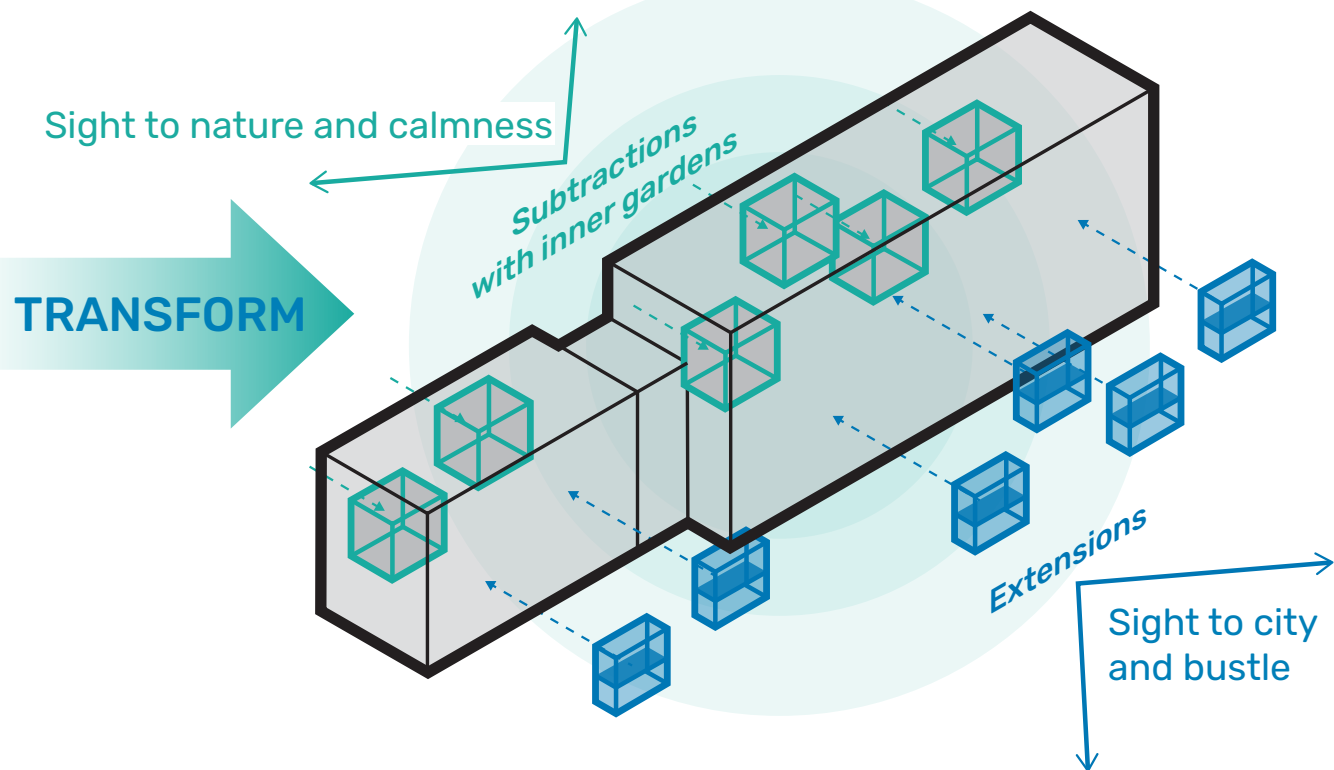
Making the local area healthier



Forming a new physical connection with LUMC



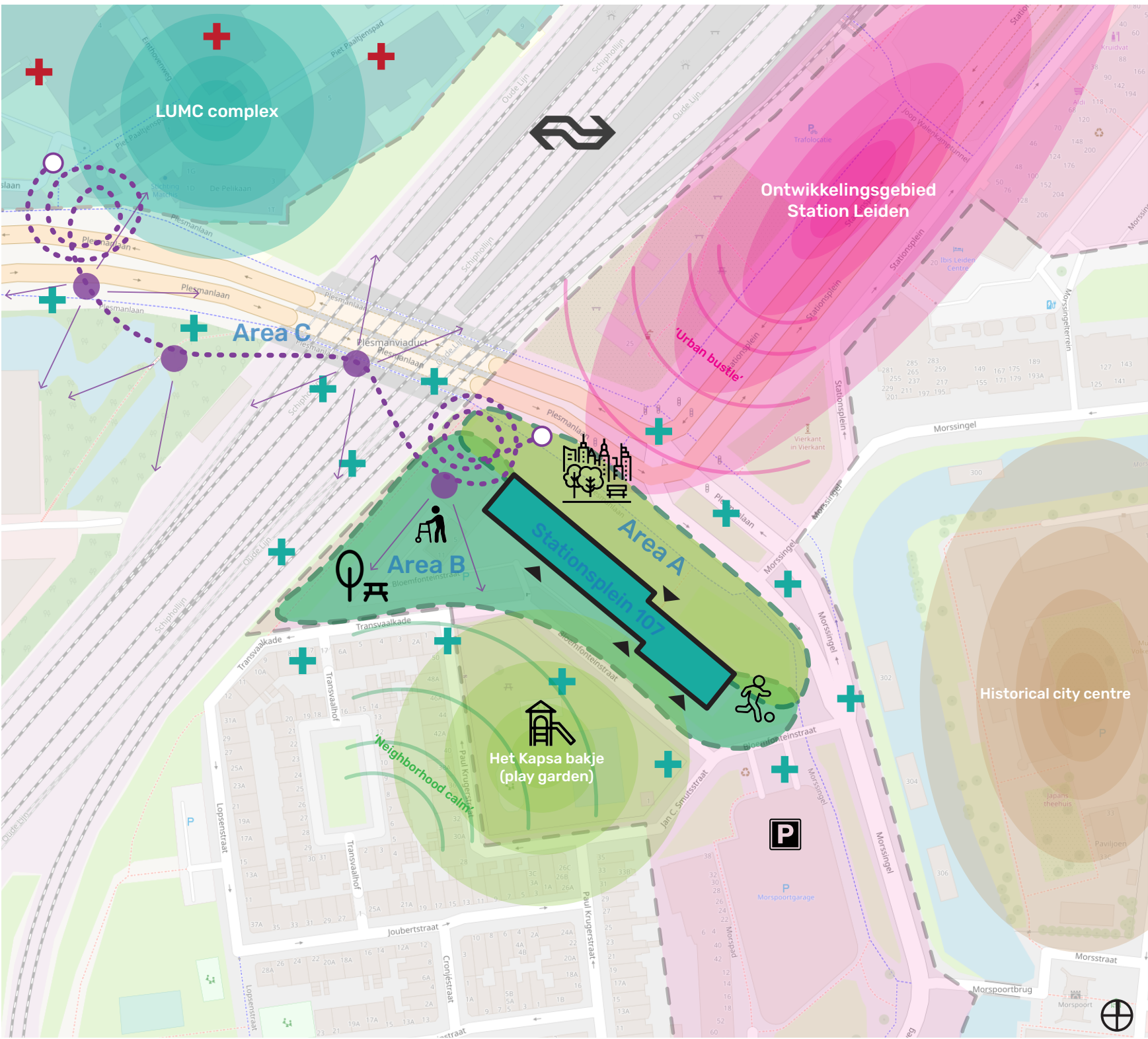
Existing building: Stationsplein 107 - Leiden



Added garden pavilion on top

Using rainwater for e.g. heating + cooling, toilets

Macro-scale area vision

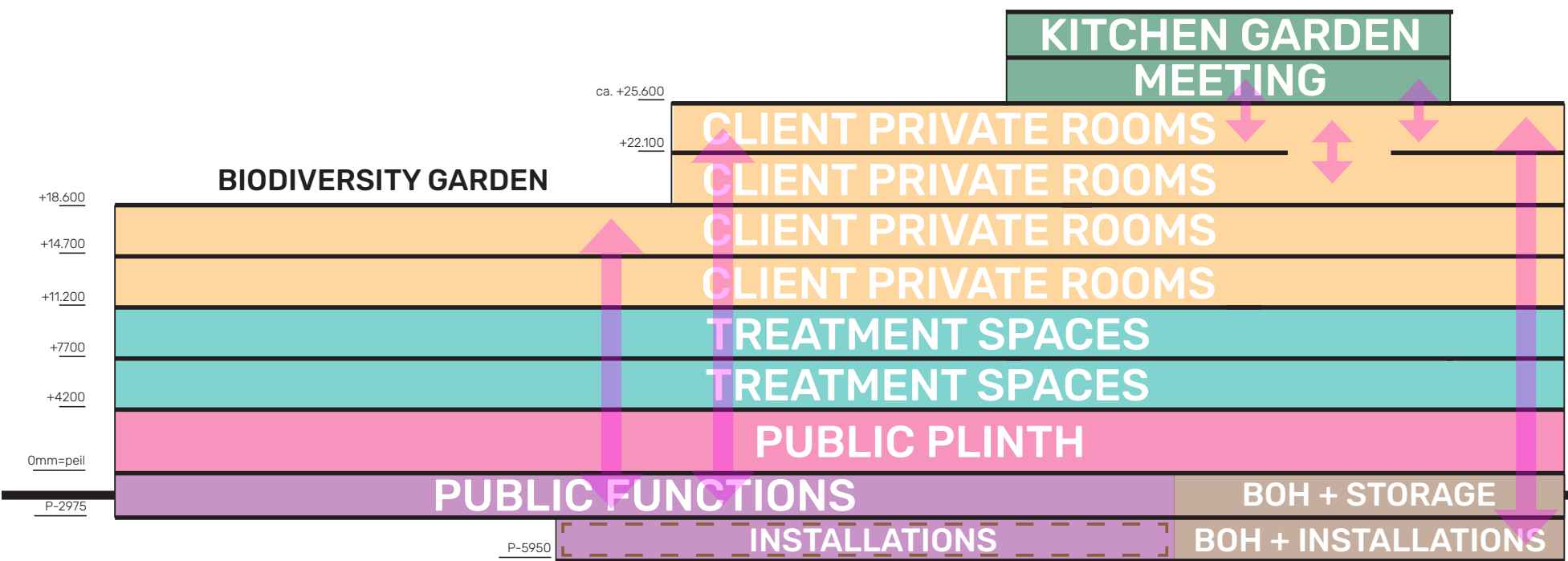
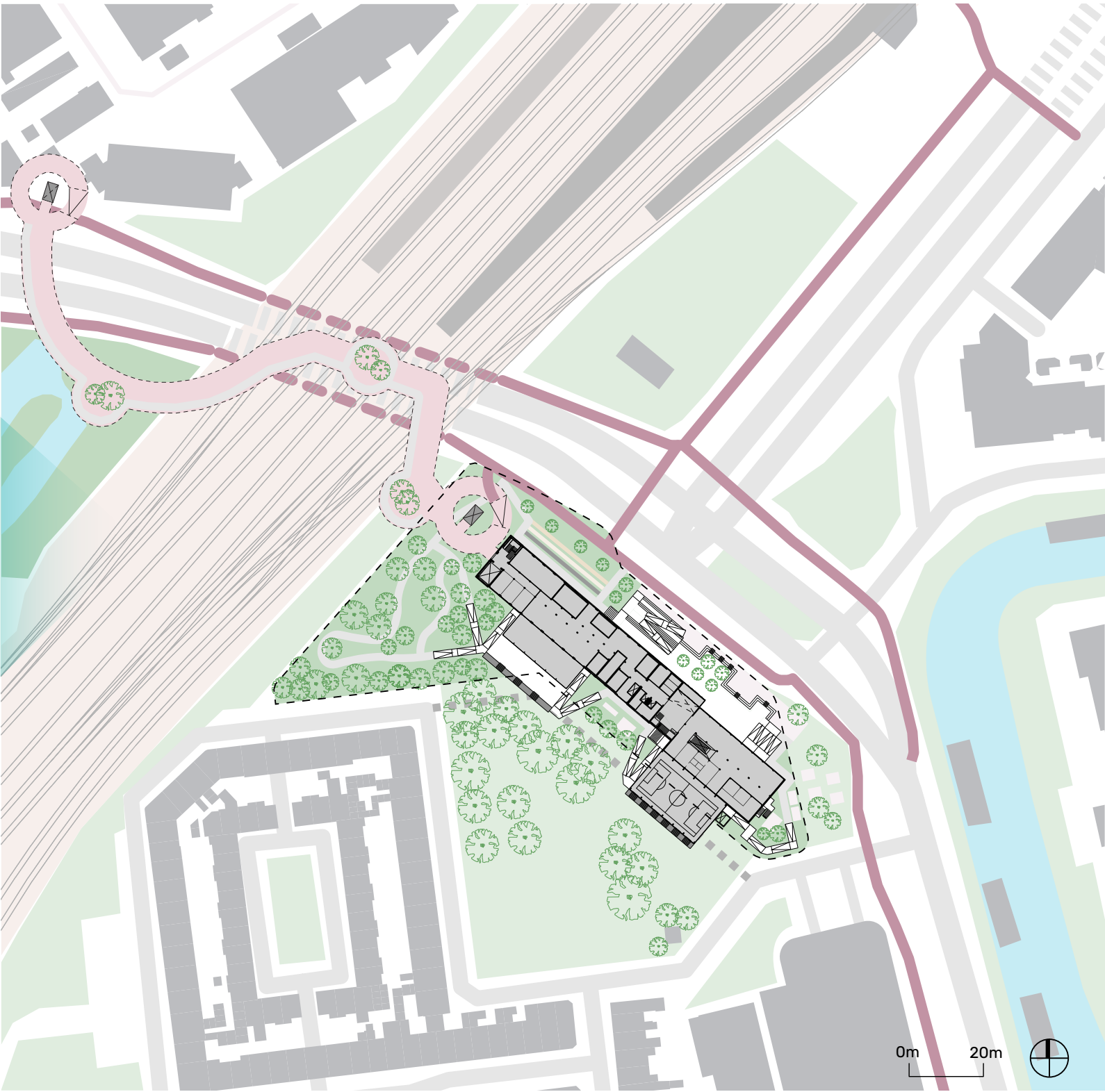


- Area A: 'Entrance to the city'**
- Public atmosphere
 - Urban bustle, spaces to rest and meet
 - Main entrance to the building
 - Enlarged 'terp' to provide extra seating spaces on tribune structure
 - Training facilities on different substrates

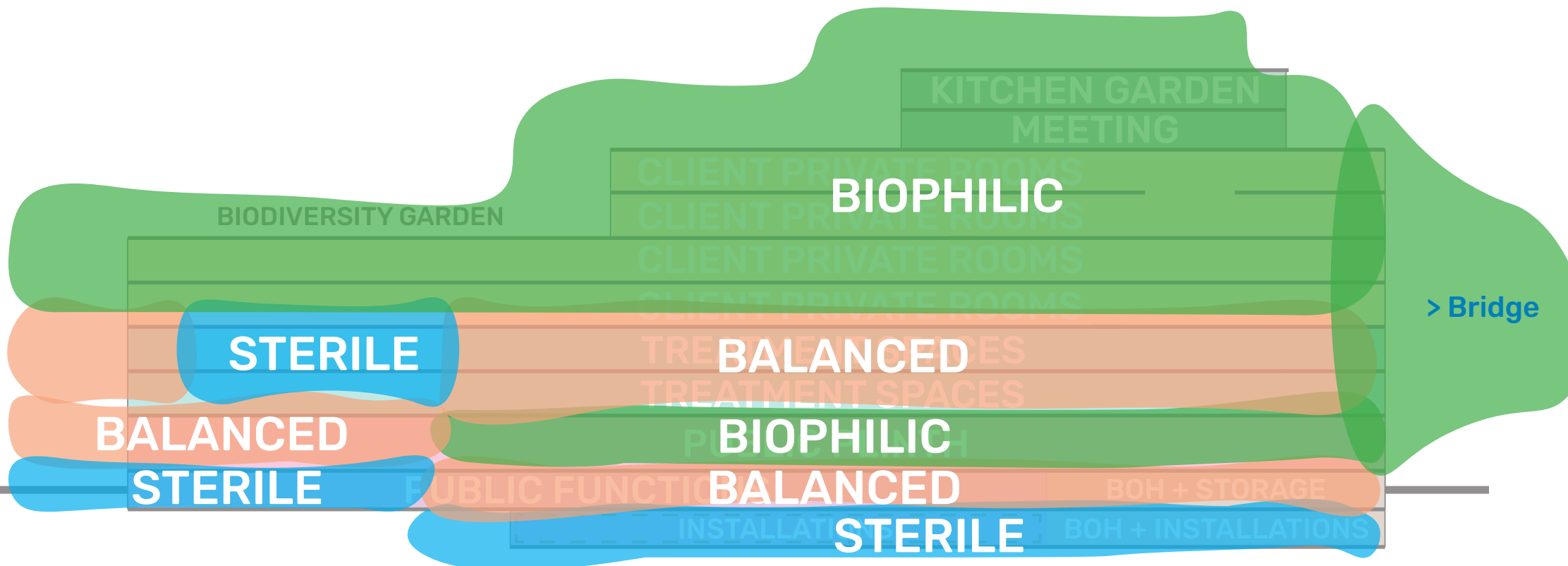
- Area B: 'The quiet backyard'**
- Practice at rest in a calming space
 - Public park but with a private feeling of calmness
 - Much greenery
 - Enlarged 'terp' by underground functions (auditorium), providing space for terrace

- Area C: 'The pictorial bridge'**
- Continuing the green ribbon
 - Viewpoints on the route
 - Practise space for mobility exercises
 - Connection to the medical area of Leiden (LUMC)

Site plan after transformation



Program division



Atmospheres



Cross section



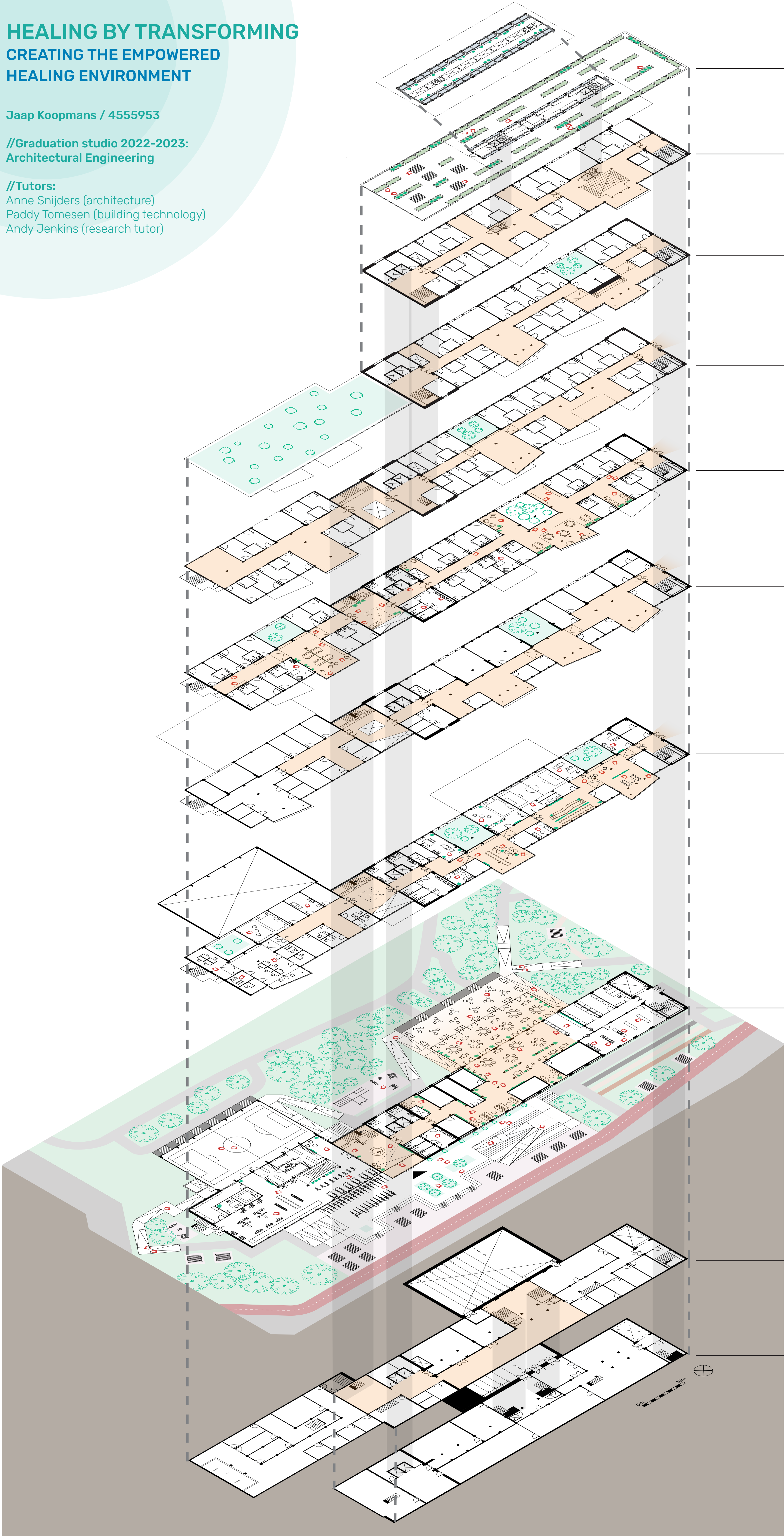
Long section

HEALING BY TRANSFORMING
CREATING THE EMPOWERED
HEALING ENVIRONMENT

Jaap Koopmans / 4555953

//Graduation studio 2022-2023:
Architectural Engineering

//Tutors:
Anne Snijders (architecture)
Paddy Tomesen (building technology)
Andy Jenkins (research tutor)



Roof: Biophilic
• Garden roof pavilion
• Kitchen garden ca. 750 m2
• Communal meeting space

Level +6: Biophilic
• Short-stay private apartments (with shared bathrooms)
• Private spaces for families/visitors
• Small multifunctional auditorium (ca. 45 m2)
• Communal meeting space

Level +5: Biophilic
• Short-stay private apartments (with shared bathrooms)
• Private spaces for families/visitors
• Small multifunctional auditorium (ca. 45 m2)
• Communal meeting spaces

Level +4: Biophilic
• Short-stay private apartments (with shared bathrooms)
• Multifunctional activity space ca. 30 m2
• Communal meeting spaces
• Communal kitchen
• Roof: biodiversity garden ca. 550 m2

Level +3: Biophilic
• Short-stay private apartments (with shared bathrooms)
• Private spaces for families/visitors
• Multifunctional activity space ca. 40 m2
• Communal meeting spaces
• Communal kitchen

Level +2: Balanced + sterile
• Treatment spaces for practioners
• Meeting spaces for staff/clients
• Workplaces for staff
• Private spaces for families/visitors
• Communal activity spaces
• Communal waiting/meeting space

Level +1: Balanced + sterile
• Treatment spaces for practioners
• Meeting spaces for staff/clients
• Workplaces for staff
• Private spaces for families/visitors
• Communal activity spaces
• Communal waiting/meeting space
• Small gymnasium hall 80 m2

Ground floor: Biophilic + balanced
• Entrance area with info desk
• Fitness area with changing rooms ca. 440 m2
• Sports hall ca. 320 m2
• Pop-up stores/exhibition spaces 17-40 m2
• Cafetaria with winter garden & outdoor area
• Outdoor activity areas
• Bike storage
• Back of house + storage

Level -1: Balanced + Sterile
• Wellness center with swimming pool ca. 450 m2
• Foyer of auditorium
• Multifunctional spaces
• Back of house auditorium + storage

Level -2: Sterile + balanced
• Entrance area to large auditorium
• Auditorium hall ca. 300 m2
• Backstage auditorium hall
• Main installation rooms + water reservoirs

HEALING BY TRANSFORMING
CREATING THE EMPOWERED
HEALING ENVIRONMENT

Jaap Koopmans / 4555953

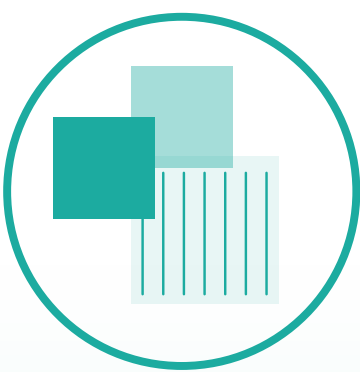
//Graduation studio 2022-2023:
Architectural Engineering

//Tutors:
Anne Snijders (architecture)
Paddy Tomesen (building technology)
Andy Jenkins (research tutor)

Key ingredients for the user experience (atmospheres):



Acoustic comfort



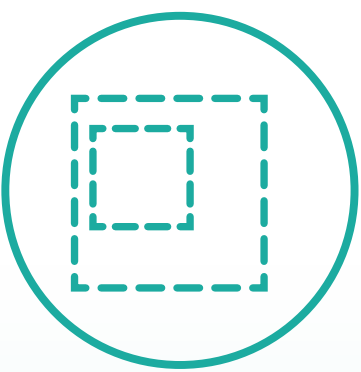
Materiality



Relaxation by
social interaction



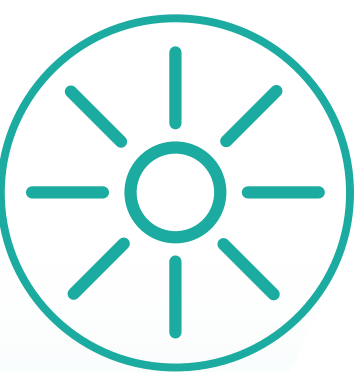
Nature



Space



(Fresh) air



Daylight

Supporting the healing process



Sterile atmosphere

- Suitable for:
- Spaces with less distraction of other people
 - Low infection rate spaces
 - Calming space for people with too many incentives
 - Specific treatment spaces which do require not having any chances of infection or external incentives

Biophilic atmosphere

- Suitable for:
- Entrance spaces where people are introduced to the building
 - Cafeteria/restaurant spaces
 - Spaces where people can meet each other
 - Patient rooms where people can feel at home

Balanced atmosphere

- Suitable for:
- Spaces demanding less distraction/incentives
 - Welcoming spaces to feel at ease
 - Treatment/exercise spaces



Sterile



Biophilic



Balanced

