

# 72 50

## LEIDEN HUMANITIES Campus & Boutique Residences

### Beyond the Boundaries

The Proposed Addition and Alteration of the Humanities Faculty Building (Cluster1)

AR3AR111

Heritage and Architecture Graduation Studio (2017-18)  
MSc4 Future of Structuralism

Original Architect: Joop van Stigt  
Year of Construction: 1975 - 82



### The Proposed Addition and Alteration of the Humanities Faculty Building (Cluster1)

#### DEVELOPMENT KEY OBJECTIVES: BUILDING SCALES

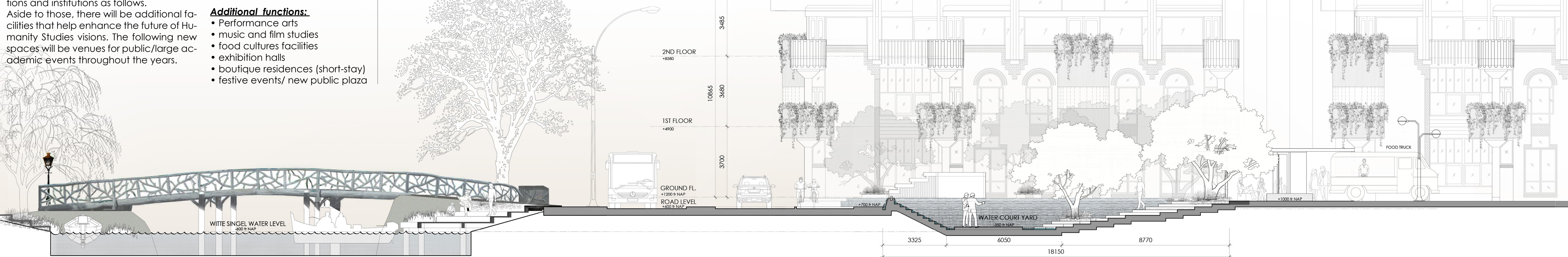
In this graduation project, the development key objectives on the building scale is aimed towards reactivate/reuse/reconfigure the academic facilities of Humanities Faculty Buildings while retaining the existing heritage values in both tangible and intangible aspects. This redevelopment proposal of Leiden Humanity buildings contains several original functions and institutions as follows.

#### Existing functions:

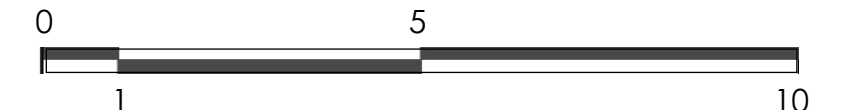
- Office space of
- Centre for the Arts in Society
- Institute for Area Studies
- Centre for Religion Studies
- Centre for Linguistics
- Library of Near East Study
- Lecture rooms / Student's area
- 80% of the original parking lots

#### Additional functions:

- Performance arts
- music and film studios
- food cultures facilities
- exhibition halls
- boutique residences (short-stay)
- festive events/ new public plaza



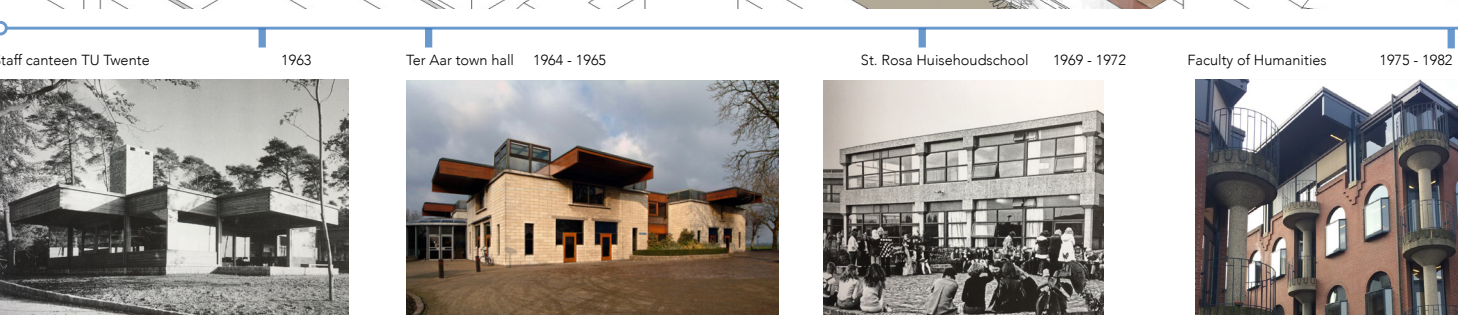
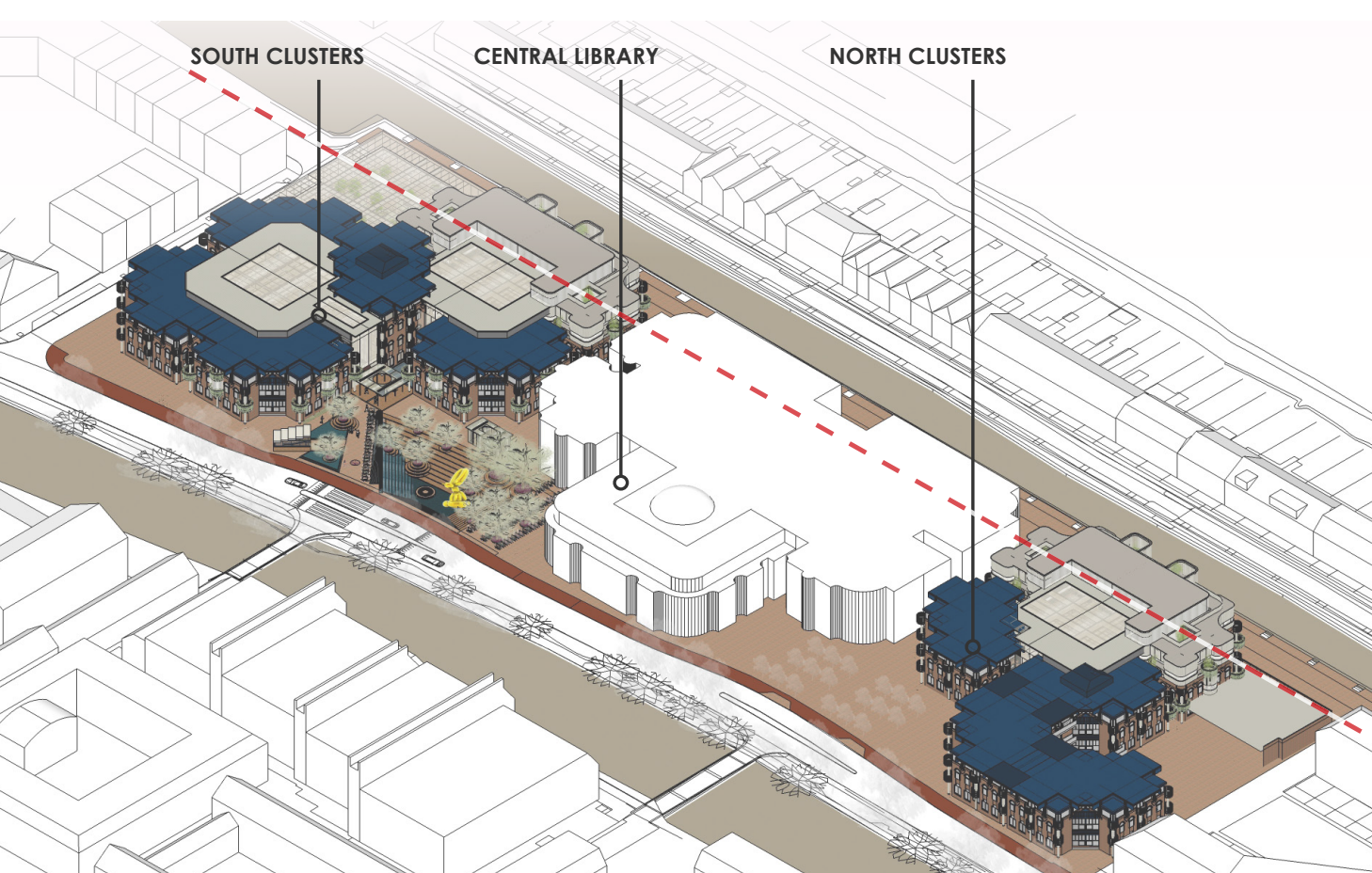
Section A-A | 1:100



#### DEVELOPMENT KEY OBJECTIVES: CAMPUS SCALE

The major interventions and/or addition should be located on the rear buildings along Moliebaan Street. The existing timber structures on these blocks will be removed/replaced by the light weight structural framings with selected facade materials that corresponded with the original brick and concrete facade. This intervention strategy help retain the building composition along Witte Sigel

waterfront and open plazas. In addition, this method will also retain the building scales in relation with the historical contexts around the site.



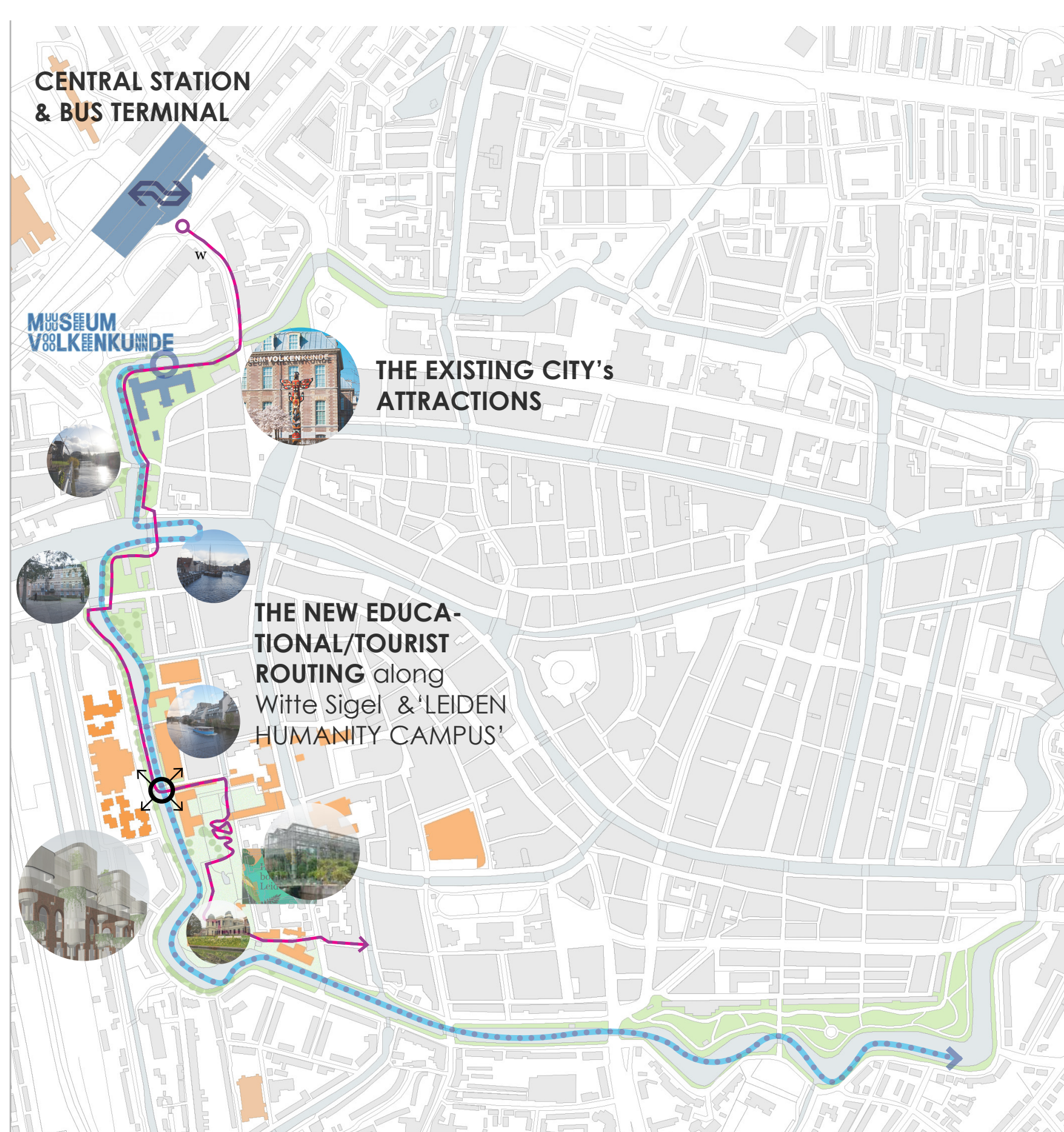
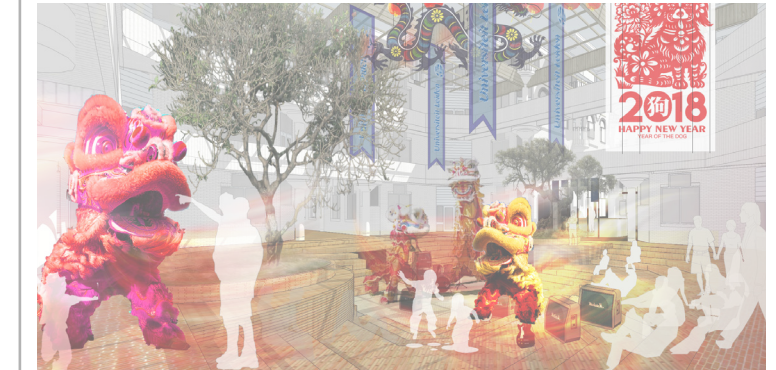
#### DEVELOPMENT KEY OBJECTIVES: URBAN SCALE

The redevelopment could be an extension of National Museum of Ethnology and Royal Museum of Antiquities (representing historical perspectives). The additional programs will be an illustration of World's contemporary and/or new culture through the lens of university students.

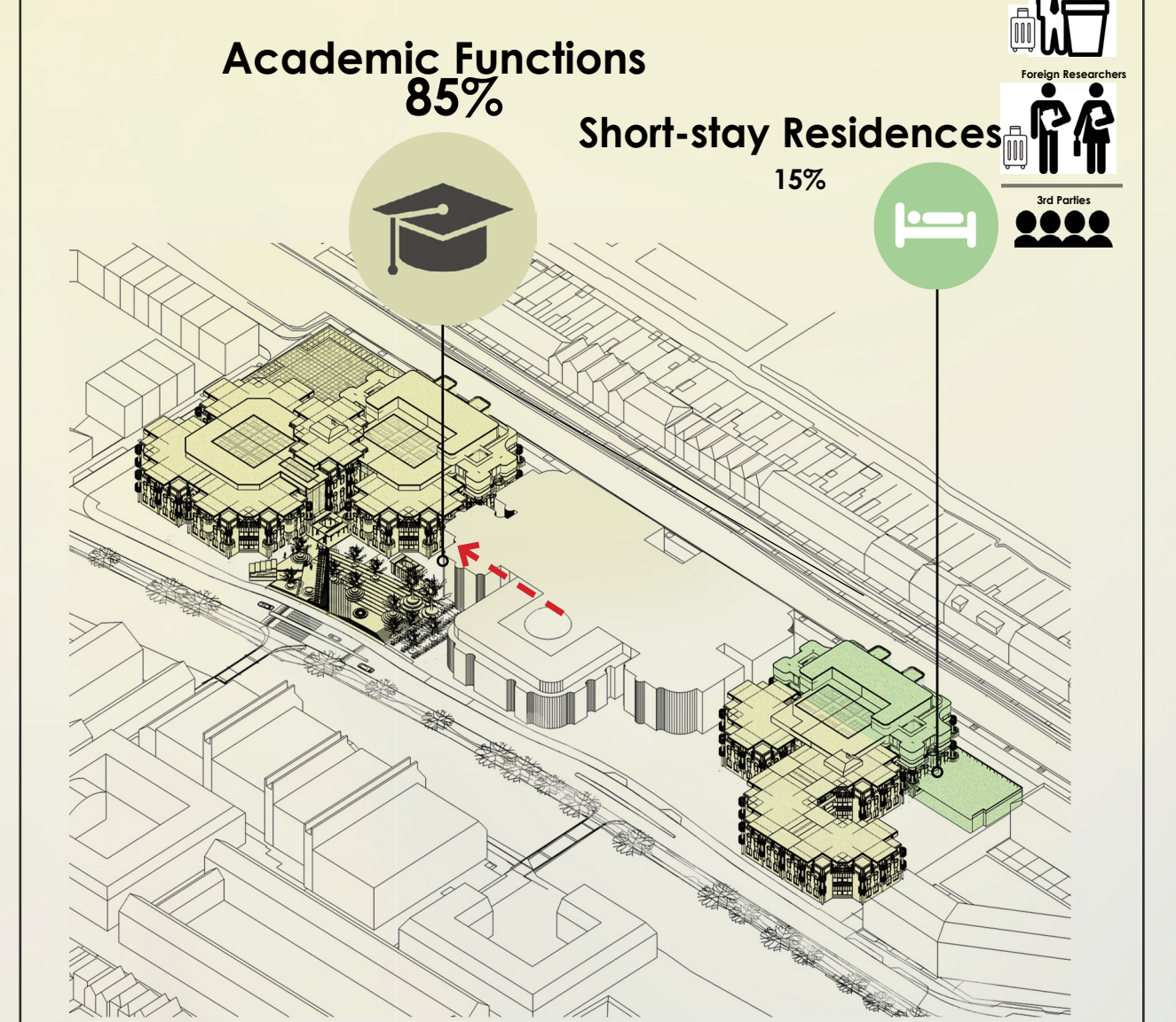
The redevelopment should help increase the tourism activities and reinforce 'City of Educations' branding.



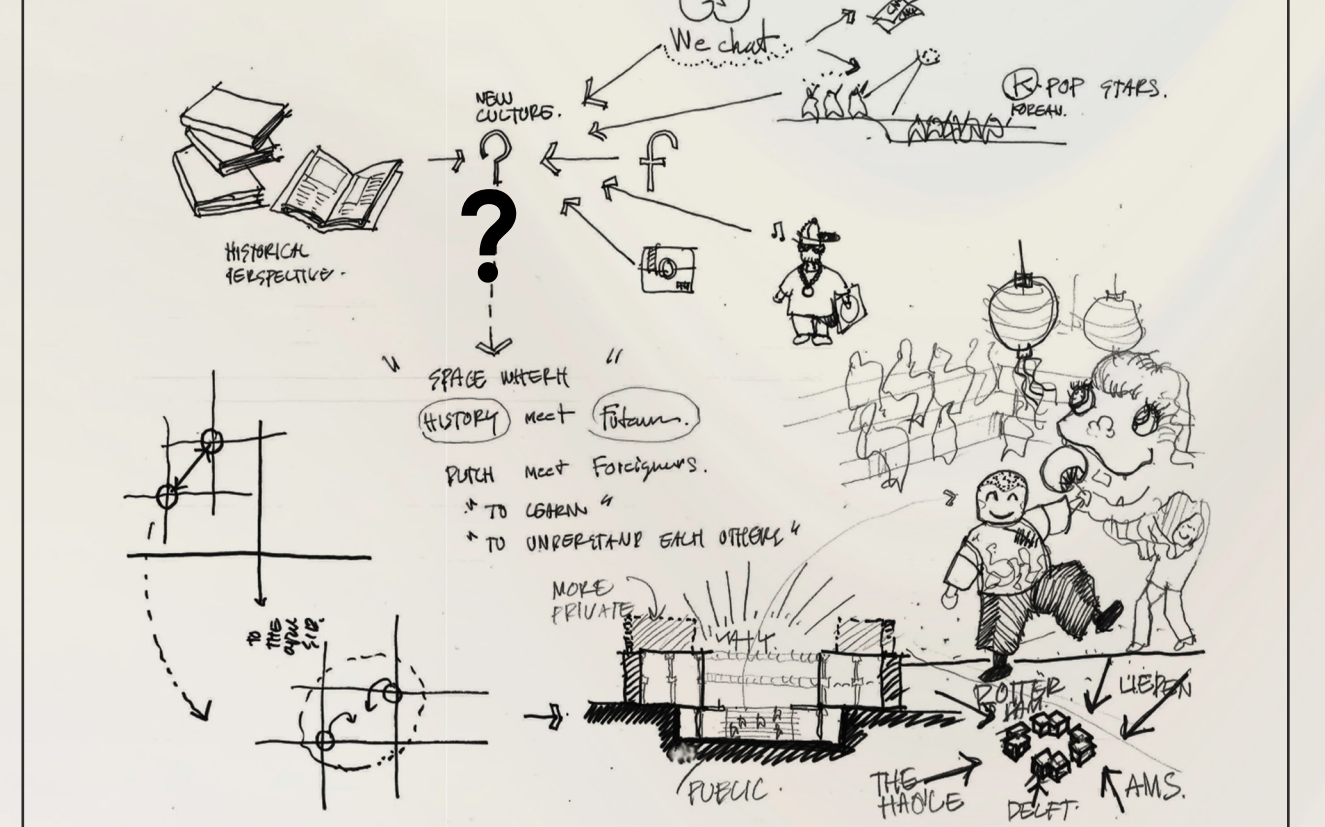
'LIVING' MUSEUM  
CONTEMPORARY & FUTURE CULTURES



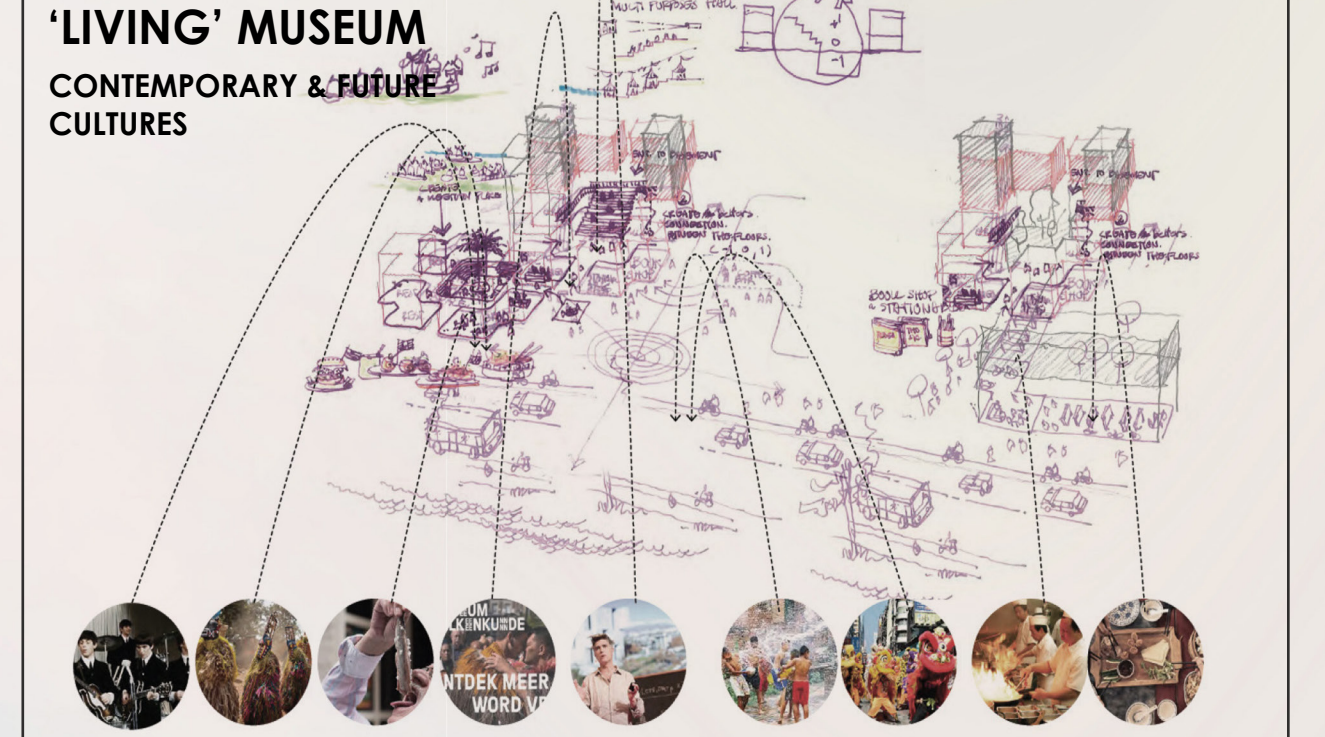
### PROGRAM PROPOSALS



### Programmatic Starting Points



### Development Key Objectives



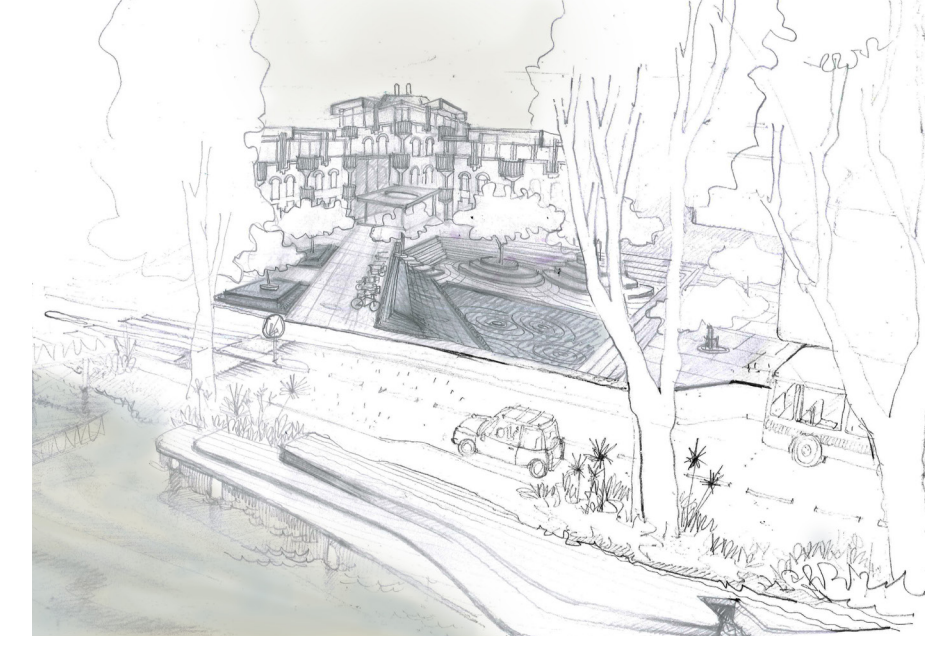
### Area Tabulation | New GFA: 19,500 sq.m.

Category	Sub-category	Area (sqm)	Units	Total Area (sqm)
Student's workspace	S	30 sqm	18 units	2100 sqm
	M	50sqm	8 units	
	L	85 sqm	3 units	
	XL	400 sqm	3 units	
Library				2200 sqm
Exhibition hall	Hall 1	150 sqm		800 sqm
	Hall 2	230sqm		
	Hall 3	420 sqm		
Office				5500 sqm
Book shop				300 sqm
F&B				1550 sqm
Residences 28 Units	Studio	25-28 sqm	18 units	2000 sqm
	1 bedroom	38-45 sqm	4 units	
	2 bedrooms	90 sqm	4 units	
	3 bedrooms	180 sqm	2 units	
Circulation				1550 sqm
M&E				850 sqm
Others				650 sqm
				<b>19500 sqm</b>

**TRANSFORMATION FRAMEWORKS & INTERVENTION STRATEGIES |**

Proposed alterations to the ground floor facilities

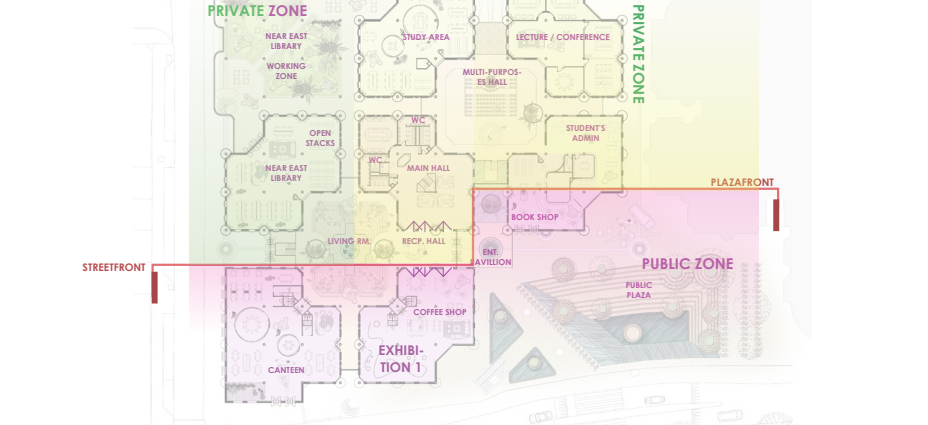
**The Threshold**  
An alteration to the existing public plaza is aimed to strengthen the relationship between the water-scape and the brick masonry buildings. The new space will be a venue for large events and outdoor performances.



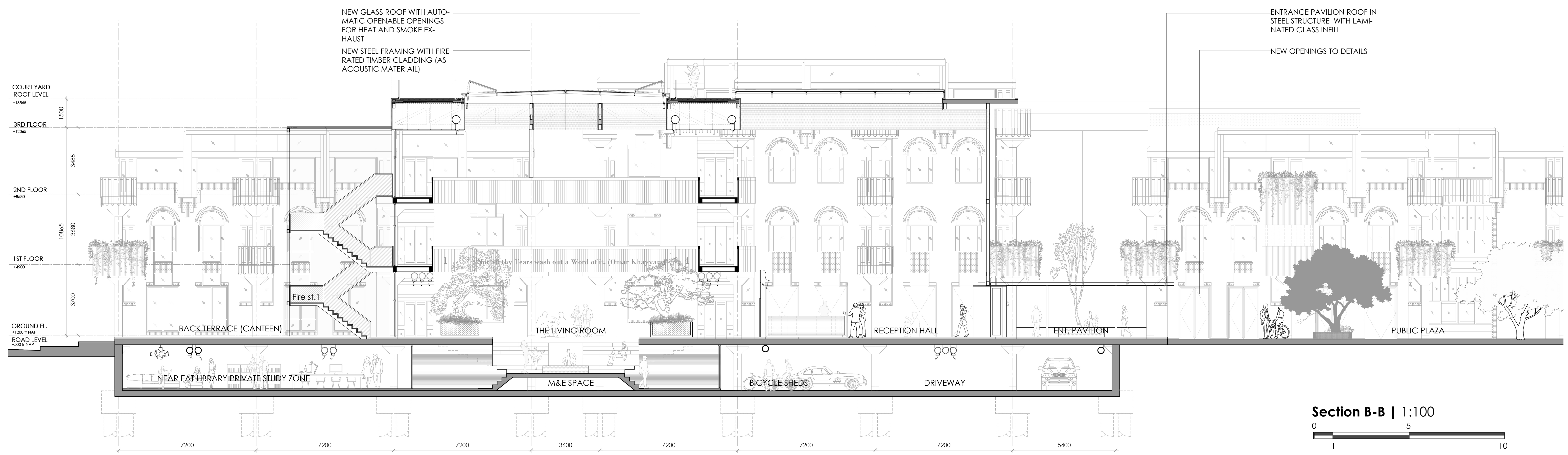
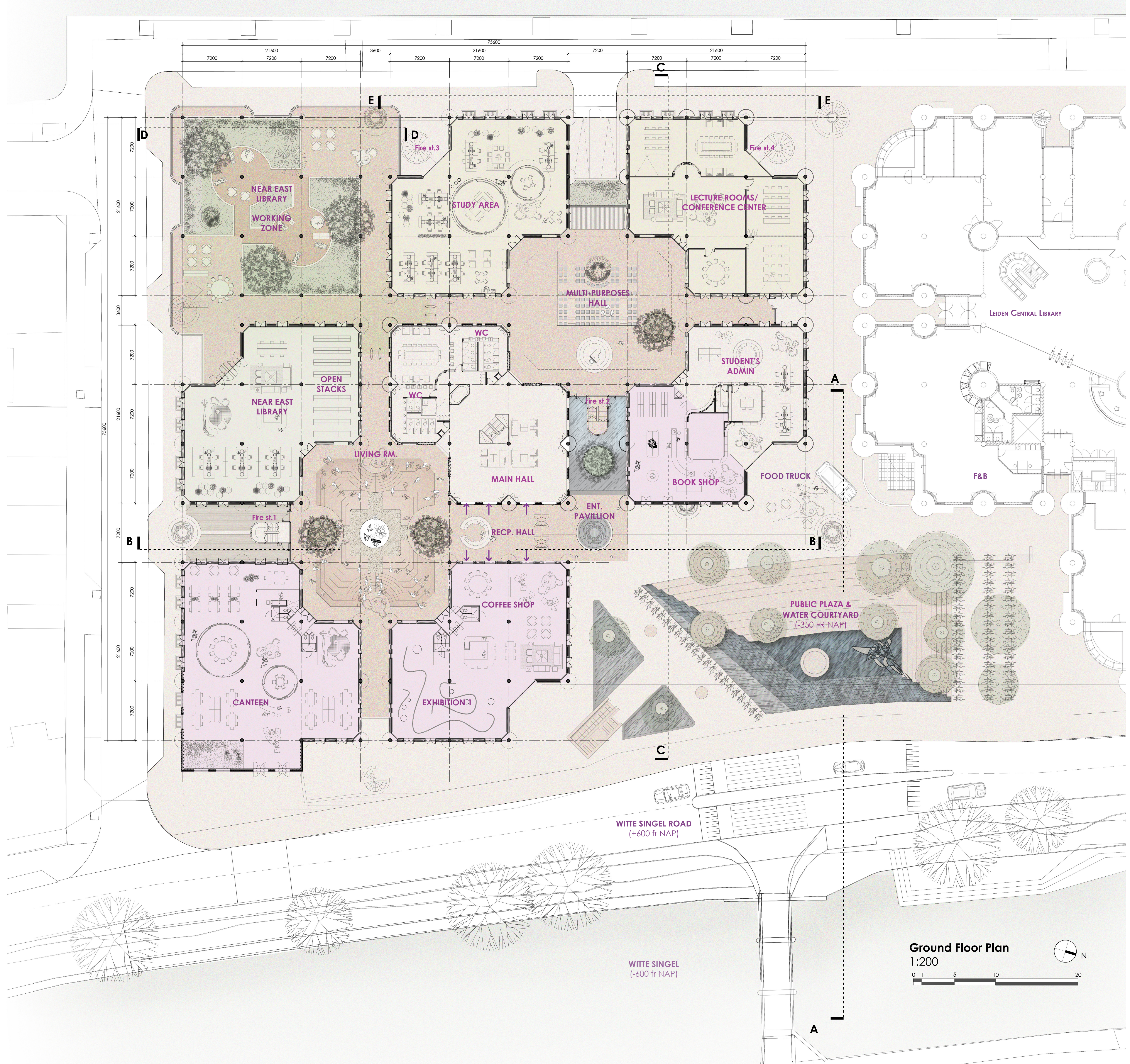
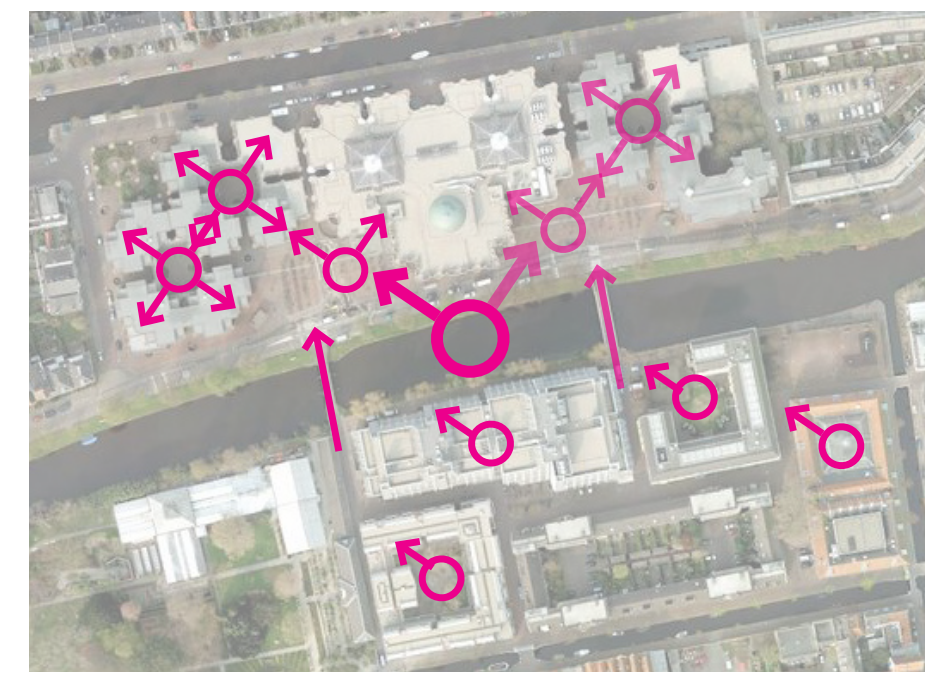
**Sunken and Raised Courtyards**  
An improvement of the way finding issue in this structuralism buildings will be done through several alteration to courtyard experiences. These actions are aimed to:  
a) To bring the communal courtyards back to life.  
b) To create a meeting place for all.  
Future alterations and/or new functions should enhance community spirit where the building users meet and gather.

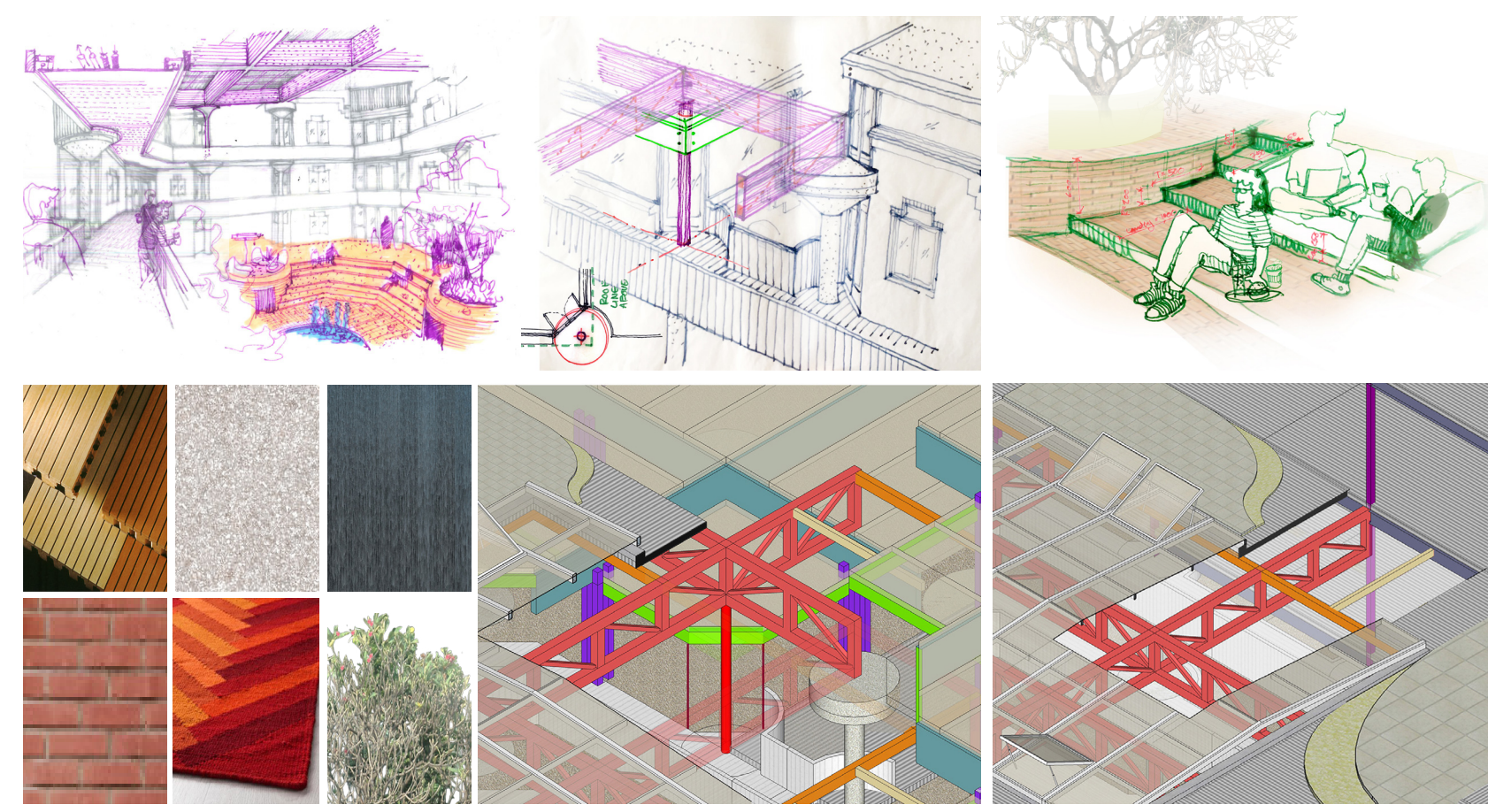
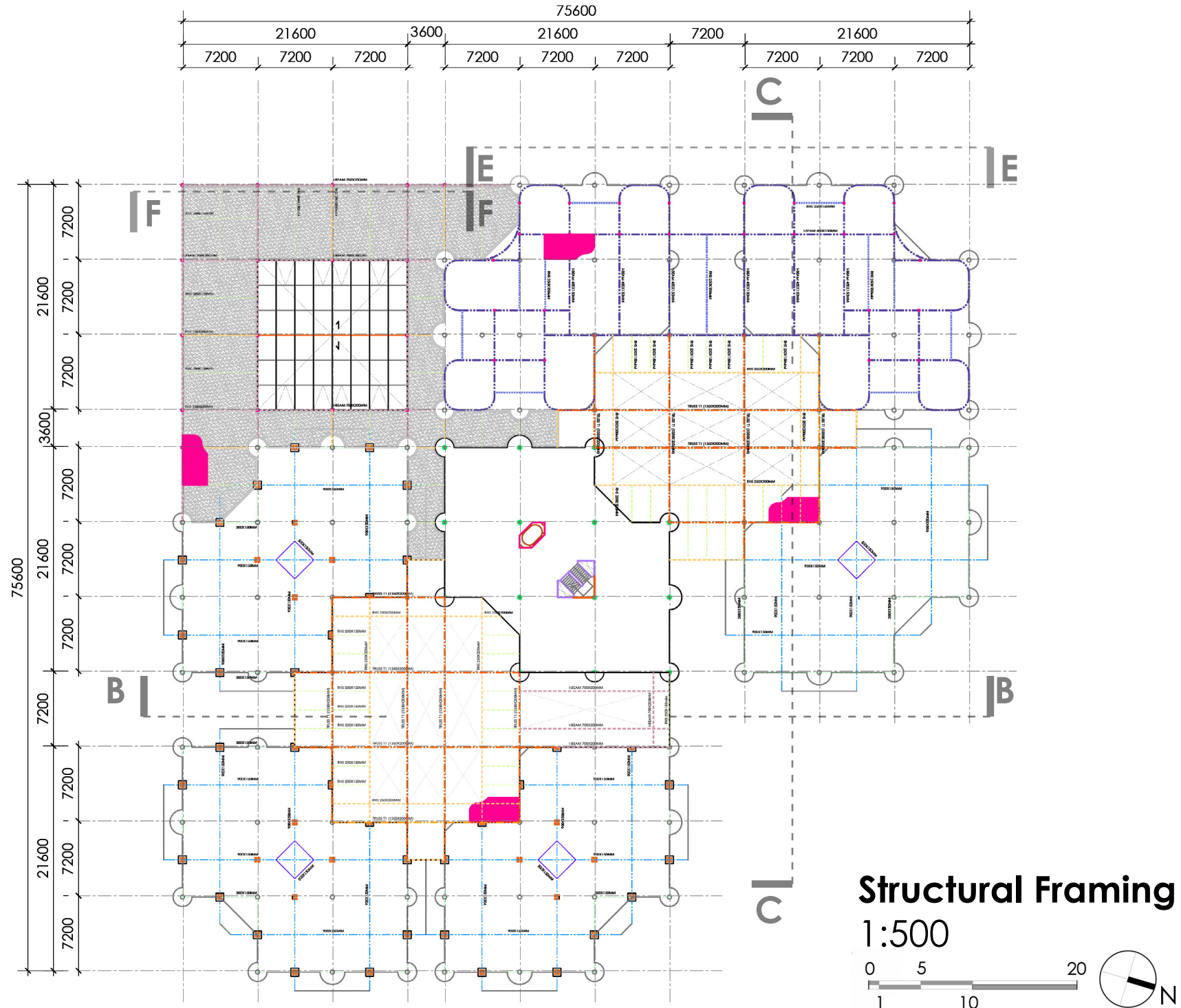
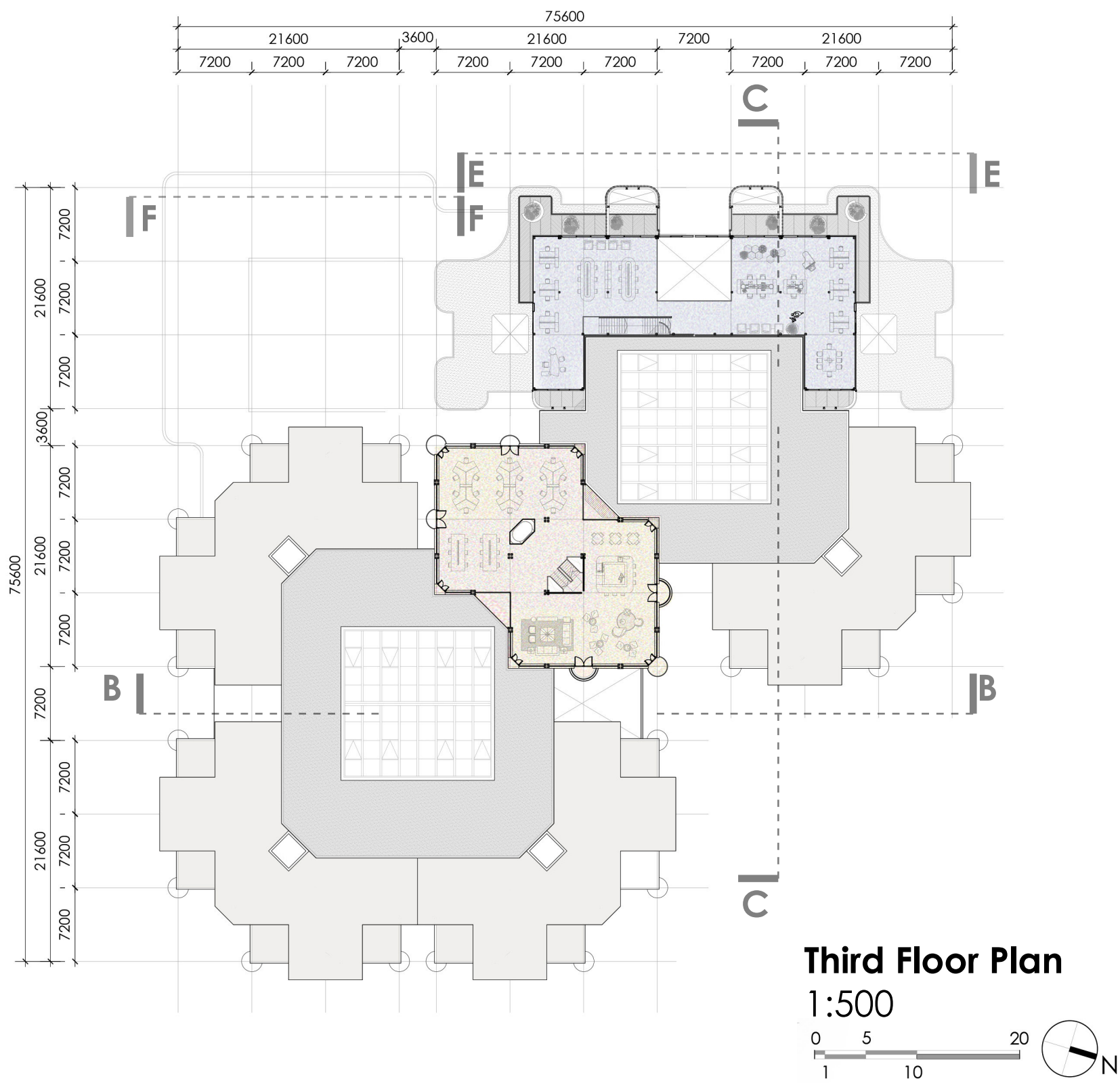
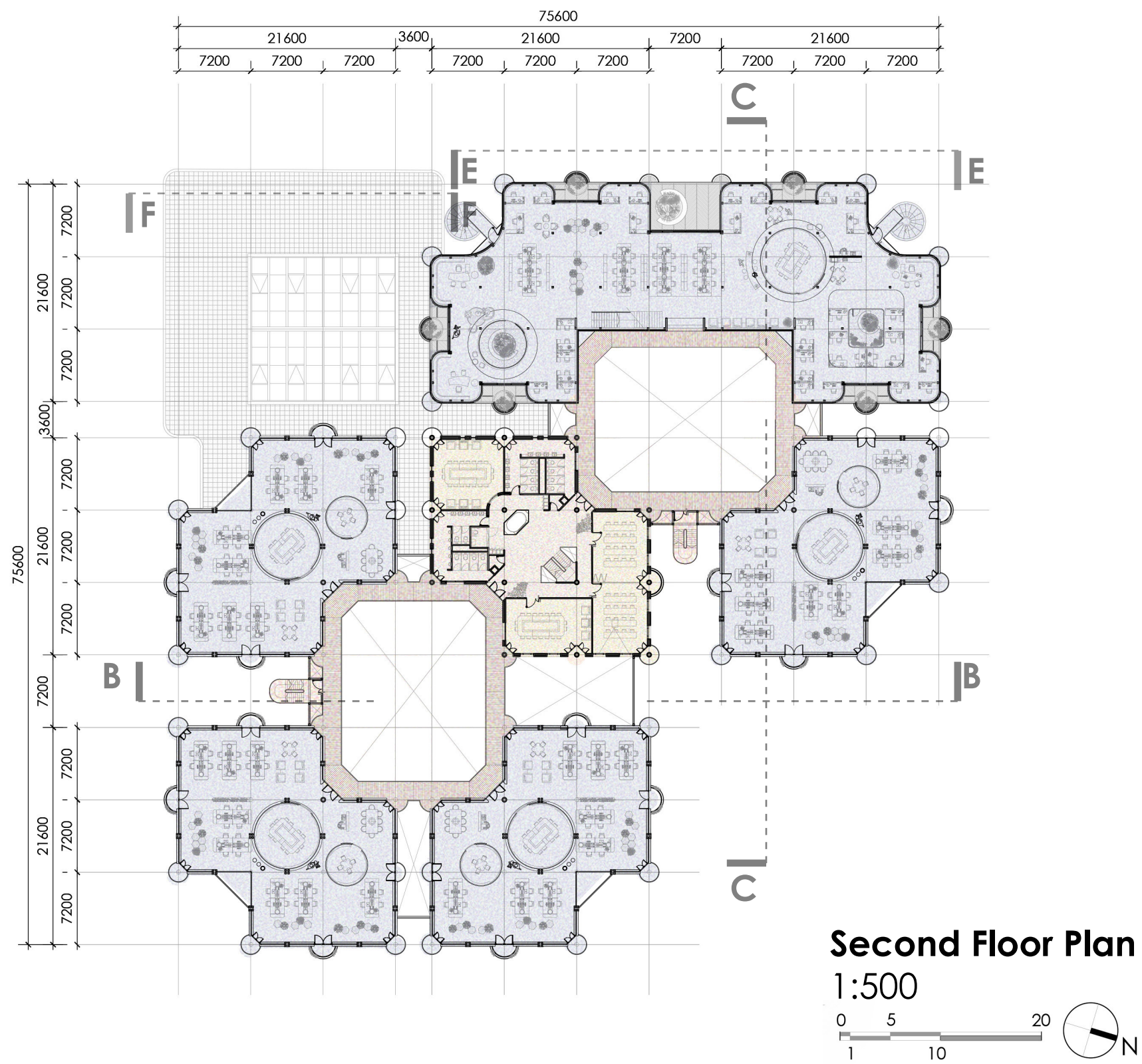
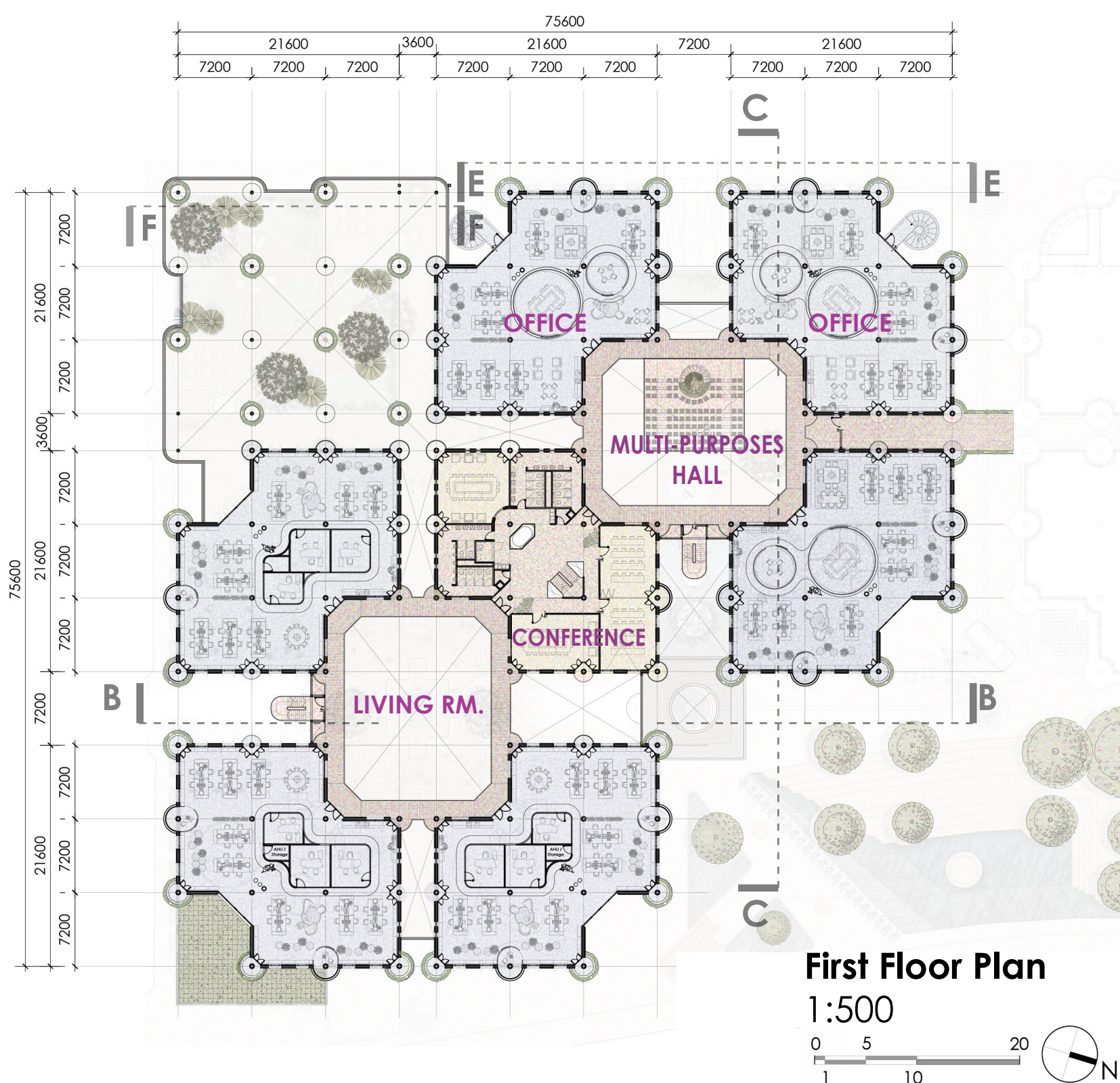
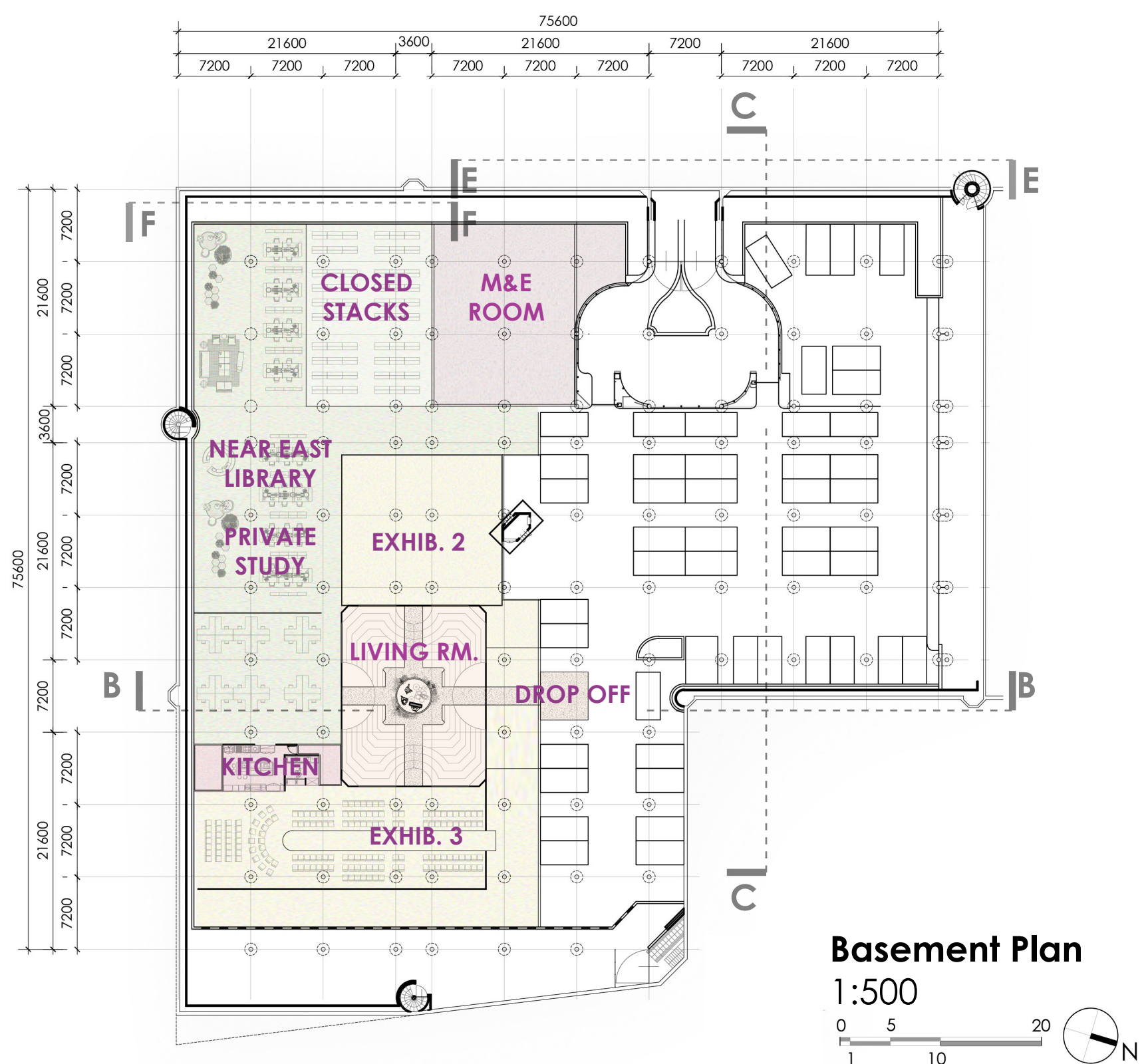


**Functional Reconfiguration**  
Another method that helps improve the wayfinding and internal circulation routings are the new configurations of the existing functions. Public spaces and communal facilities will be positioned along the Witte Singel side. Other Private functions will be located at the rear side of the complex. The Near East Library will be relocated to the 'Mushroom garden', the most quiet corner of campus.

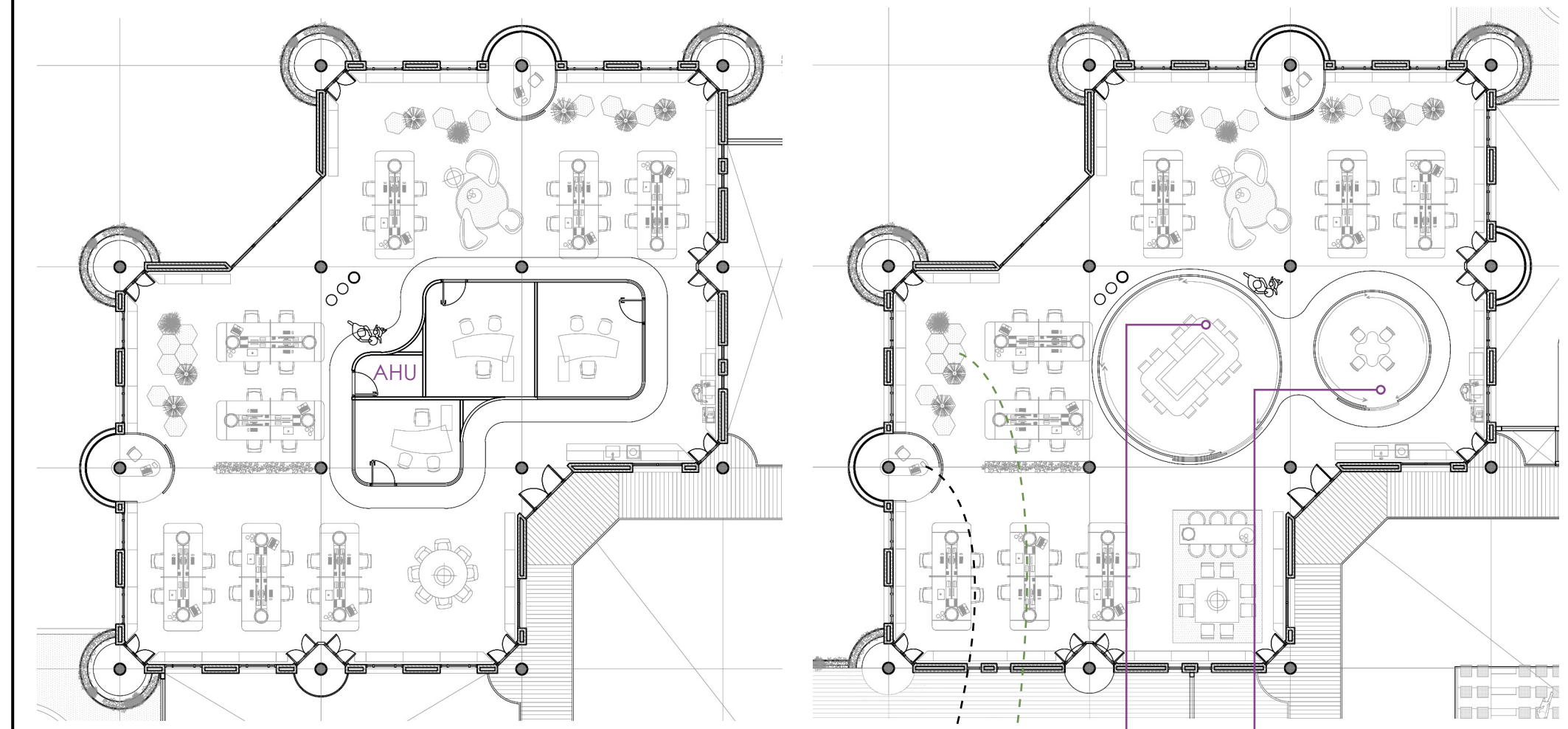


**The Living Room**  
In addition, these buildings will be to be transformed into a Club House of the inner city campus, with series of facilities for the future humanity studies. It will be the venue for the future cultural events, festival and contemporary exhibitions.





**The New Interior**

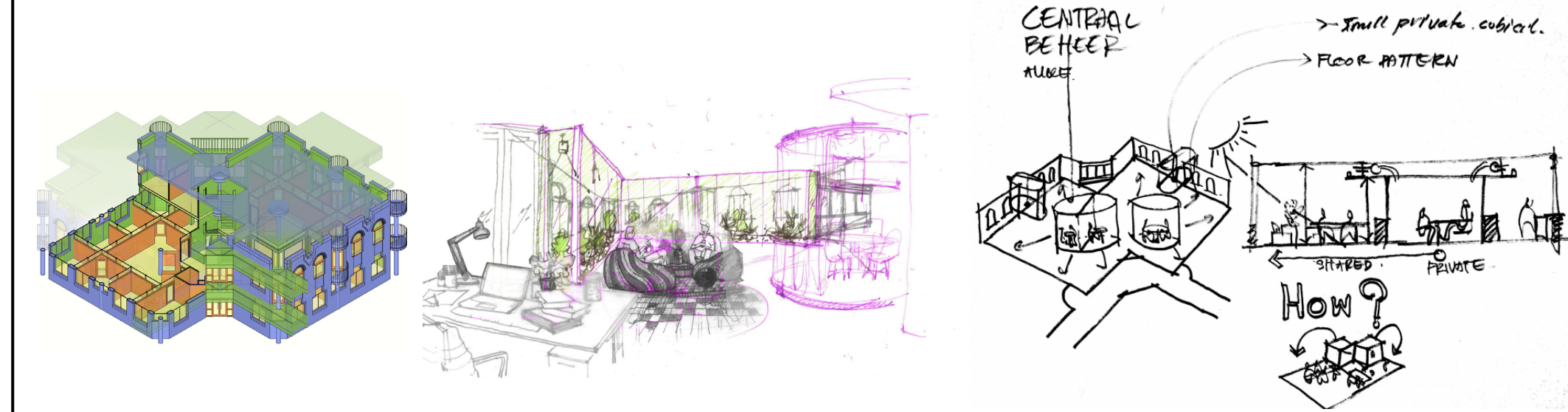
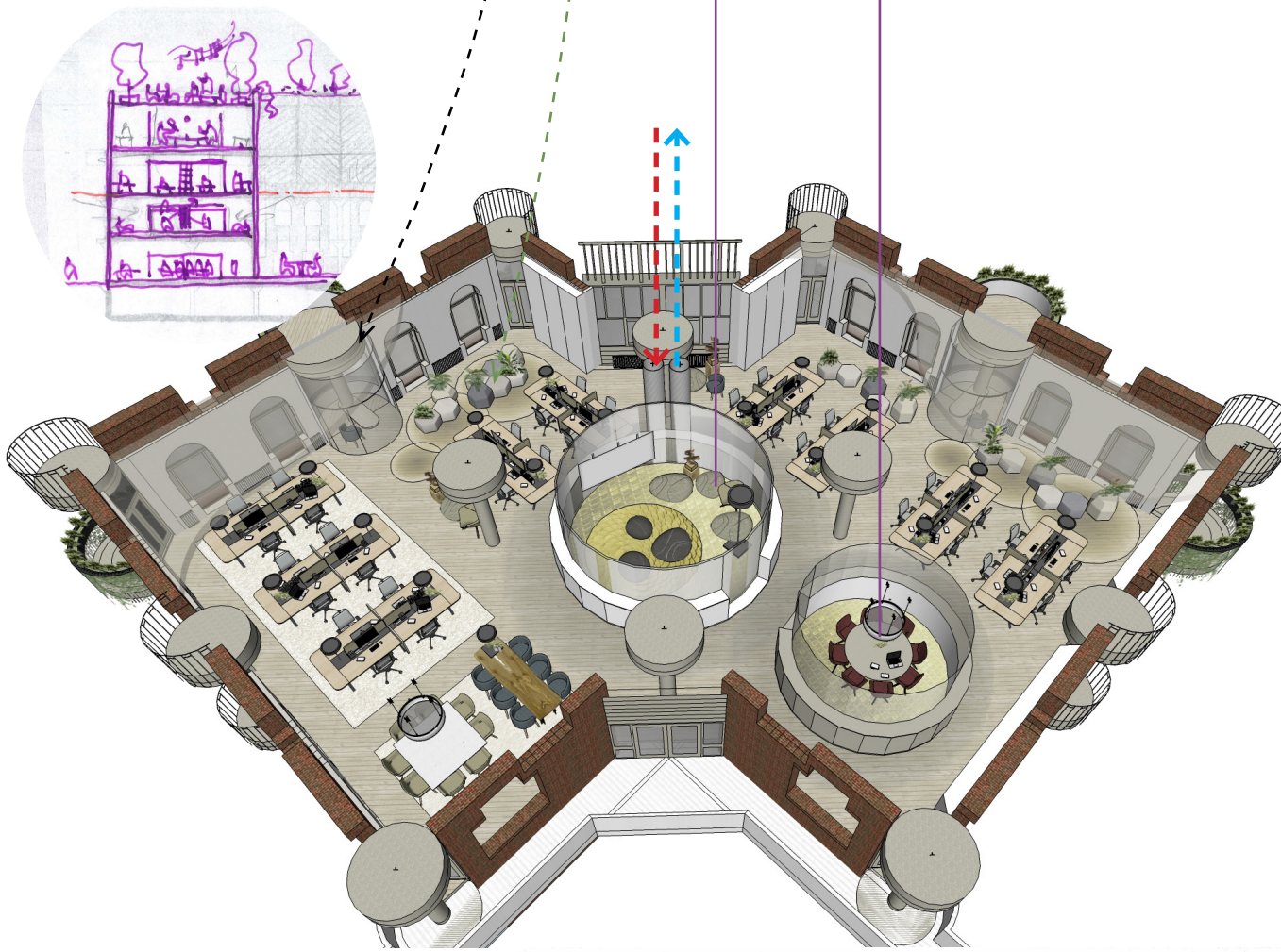


To improve the building efficiency and space qualities, the 'REVERSE' Method will be applied to the new interior design. The rearrangement of the existing office layouts is the key to achieve these goals.

- Private rooms and communal functions to be positioned at the center.
- Common spaces and open workspace to be located adjacent to the facades.

Aside to that, the new design will also help improve climate control including heating system, condensation and daylighting.

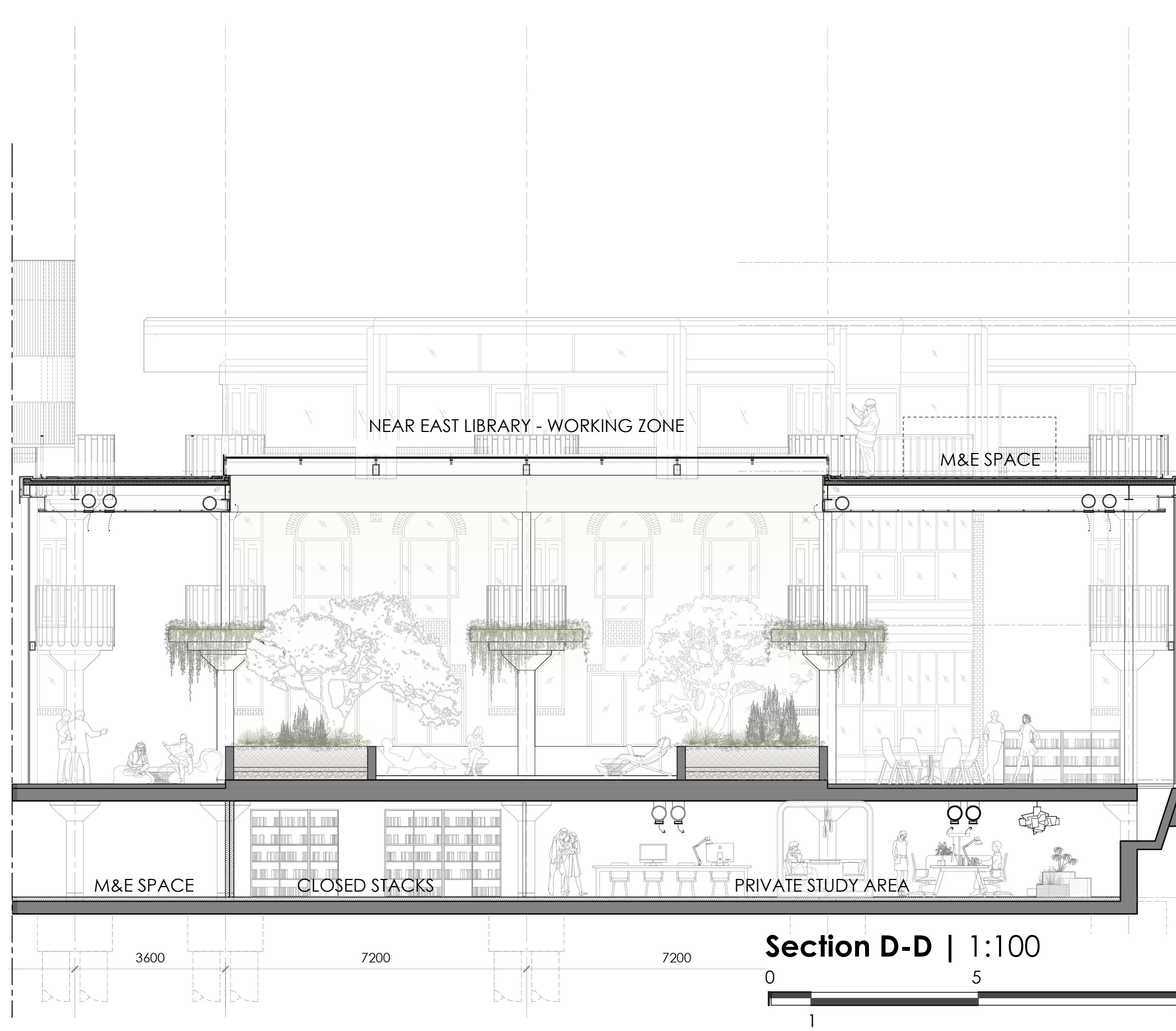
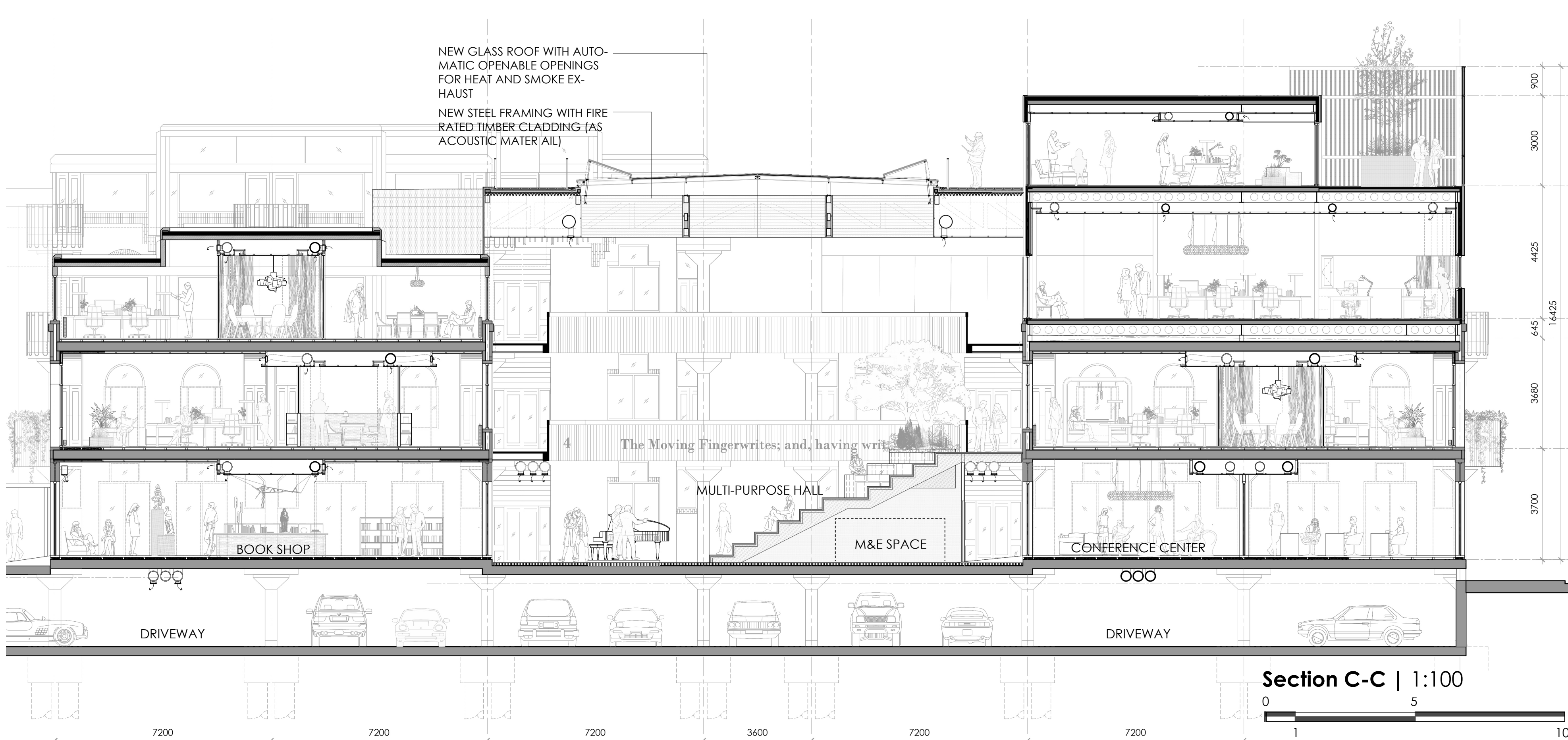
At the same time, the new layout offers several working spaces for various usages. This area range from private office cubicles, shared desks, individual cells, and communal seating area along the building facades.



**The Garden Library**

Near East Library will be situated on the quietest corner of the site. This function will be shared by the internal users and external visitors.

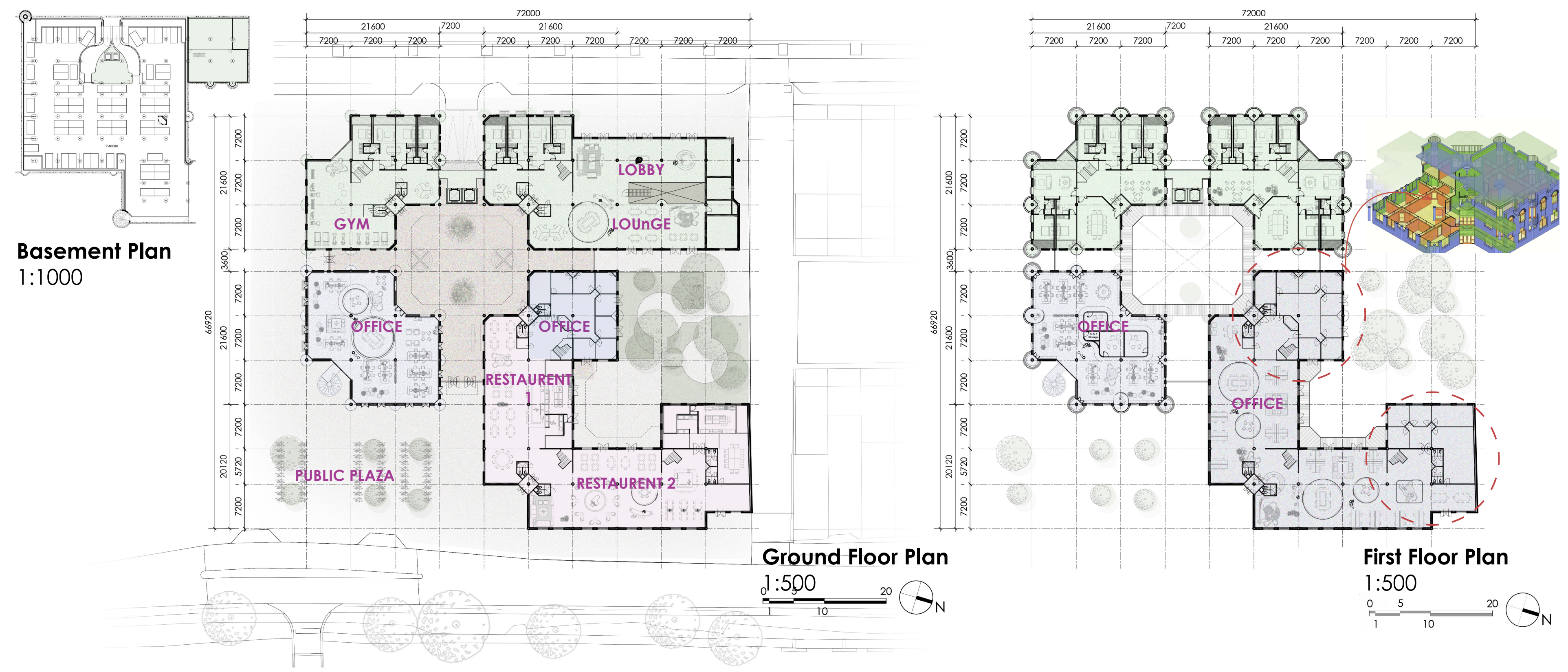
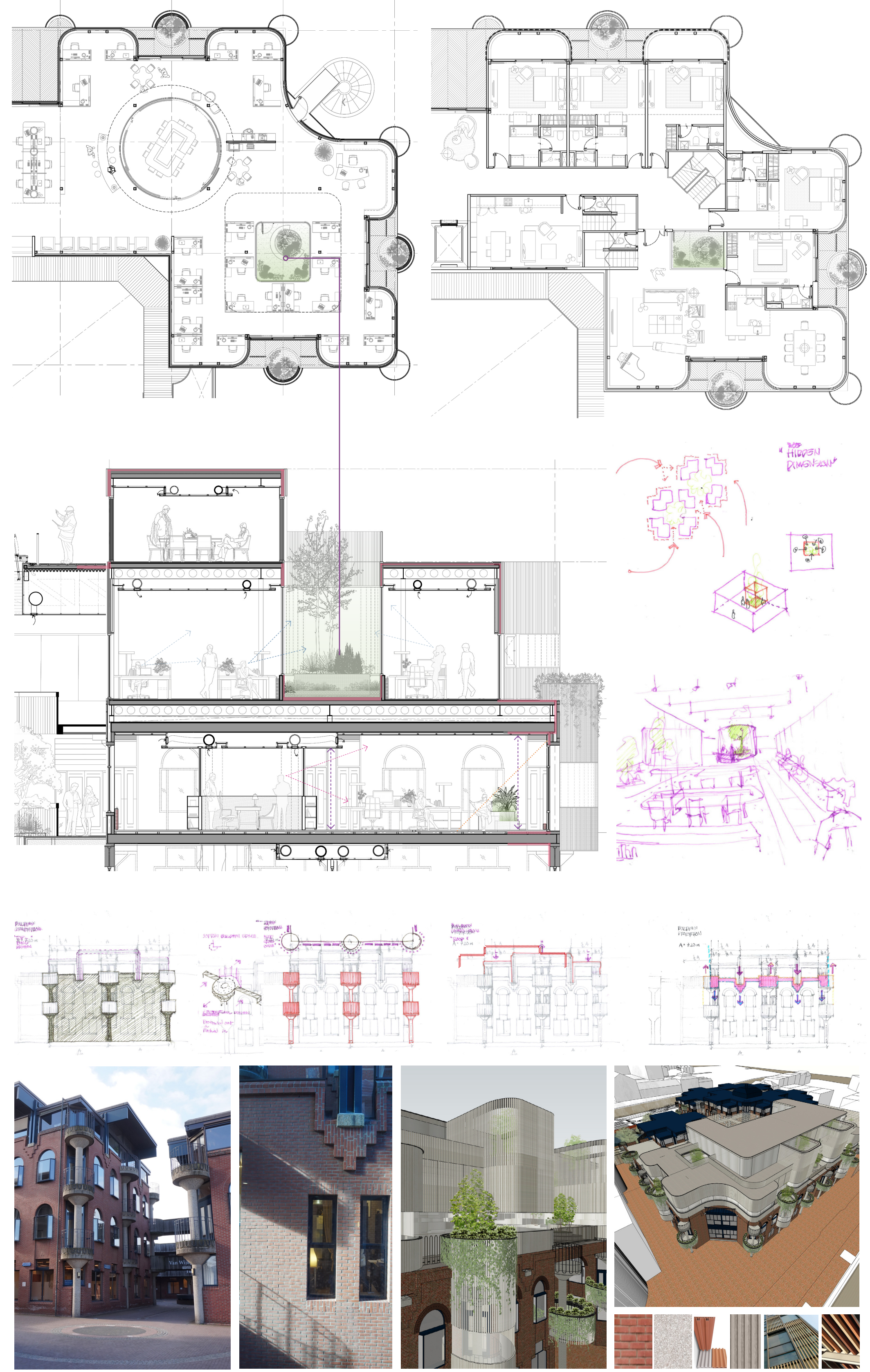
The original 'mushroom garden' of the South Cluster will be covered by a new glass roof. The new interior space will house large library's working space. Lush trees and shrubs will be planted in this hall. The green environment will contribute to the new image of University library. This improved learning environment is a reinterpretation of the original humanity design approach.







**The Additions**



**Unit Tabulation**

Residences 26 Units		2000 sqm
Studio 25-38 sqm	16 units	
1 bedroom 38-45 sqm	4 units	
2 bedrooms 90 sqm	4 units	
2 bedrooms (duplex) 94 sqm	2 units	
3 bedrooms (duplex) 198 sqm	2 units	

