

Hidden Communities

<EXCAVATING> PLACELESS CULTURES in
POST-COLONIAL LONDON by
COMMENSALITY

The Place

<VITALIZING> PLACELESS CULTURES in
POST-COLONIAL LONDON by
COMMENSALITY

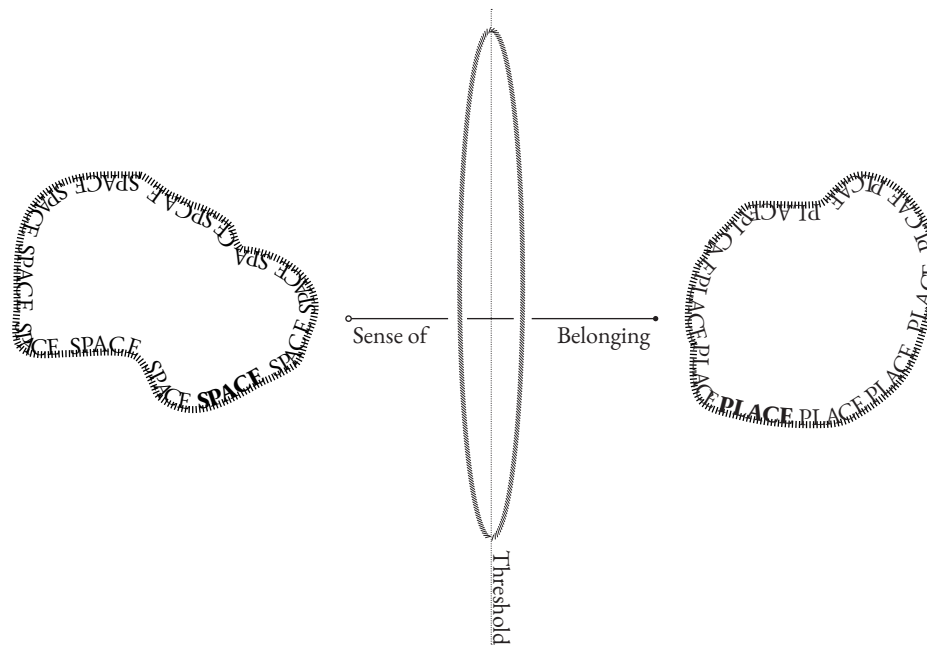


**EXCAVATING PLACELESS CULTURES in POST-COLONIAL
LONDON by COMMENSALITY**

“Imagination of both the urban and the diasporic,..., has largely remained circumscribed by reference to the model of the state as nation-state, supported by the idea of the nation as ideally ethnically homogeneous. “

<King 2015>

Space and Place
Placeness-less<ness>



-What are the spatial outcomes and uses of thresholds between “places” and “spaces” of belonging for diverse ethnic groups in post-colonial London?

-How does the built environment influence the behavioral patterns of different ethnic communities in London?

-Does social conduct of segregated communities have a visible shaping effect on the urban morphological layer of the city of London?

-When does the threshold between spaces and places of communities becomes visible?

-What are the material and intangible qualities of transitions of space to place as sense of belonging to a community reflected as thresholds in the city?

-How can architecture redefine itself for tackling the issue of otherness by understanding the thresholds of ethnic minorities in London?

“Not only are the ‘colonial city’ and the ‘imperial city’ umbilically connected in terms of economic linkages as well as cultural hybridization, but their ‘post-equivalents’ cannot be disentangled one from the other and need to be analyzed within a single ‘postcolonial’ framework of intertwining histories and relations”

<Yeoh 2001>

Ethnoscapes

Ethno.; <People>

Scape.;

Hidden Communities

<Excavating> Placeless Cultures in Post colonial London by Commensality



001-AFGHAN TOTAL-44,505 WARD AVERAGE-71.21	002-AFRICAN TOTAL-607,441 WARD AVERAGE-971.9	003-ALBANIAN TOTAL-8,932 WARD AVERAGE-14.29	004-ARAB TOTAL-110,207 WARD AVERAGE-176.3	005-AUSTRALIAN TOTAL-47,758 WARD AVERAGE-76.41	006-BALTIC STATES TOTAL-35,303 WARD AVERAGE-56.48	007-BANGLADESHI TOTAL-222,5454 WARD AVERAGE-356.1	008-BOSNIAN TOTAL-1,381 WARD AVERAGE-2.210
--	--	---	---	--	---	---	--



009-BRAZILIAN TOTAL-13,161 WARD AVERAGE-21.06	010-BRITISH TOTAL-3,691,371 WARD AVERAGE-5.906	010-CARRIBBEAN TOTAL-475,347 WARD AVERAGE-760.6	011-CHILEAN TOTAL-636 WARD AVERAGE-1.018	012-CHINESE TOTAL-126,346 WARD AVERAGE-202.2	013-COLOMBIAN TOTAL-3,425 WARD AVERAGE-5.840	015-CYPRriot TOTAL-33,281 WARD AVERAGE-53.25	016-ECUADORIAN TOTAL-848 WARD AVERAGE-1.357
---	--	---	--	--	--	--	---



017-FILIPINO TOTAL-52,216 WARD AVERAGE-83.55	018-GREEK TOTAL-25,552 WARD AVERAGE-40.88	019-INDIAN TOTAL-546,016 WARD AVERAGE-873.6	020-INDONESIAN TOTAL-1,981 WARD AVERAGE-3.170	021-IRANIAN TOTAL-36,250 WARD AVERAGE-58.00	022-IRISH TOTAL-177,903 WARD AVERAGE-284.6	023-ISRAELI TOTAL-2,947 WARD AVERAGE-4.715	024-ITALIAN TOTAL-13,161 WARD AVERAGE-21.06
--	---	---	---	---	--	--	---



025-JAPANESE TOTAL-21,441 WARD AVERAGE-34.31	026-KOREAN TOTAL-12,612 WARD AVERAGE-20.18	027-KURDISH TOTAL-20,988 WARD AVERAGE-33.58	028-LATIN AMERICAN TOTAL-48,065 WARD AVERAGE-76.90	029-NEPALESE TOTAL-22,067 WARD AVERAGE-35.31	030-NIGERIA TOTAL-1,501 WARD AVERAGE-2.402	031-NORTH AMERICAN TOTAL-37,409 WARD AVERAGE-59.85	032-PAKISTANI TOTAL-224,569 WARD AVERAGE-359.3
--	--	---	--	--	--	--	--



033-POLISH TOTAL-136,598 WARD AVERAGE-218.6	034-VIETNAMESE TOTAL-16,499 WARD AVERAGE-26.40	035-TURKISH TOTAL-87,910 WARD AVERAGE-140.7	036-THAI TOTAL-9,475 WARD AVERAGE-15.16	037-SRI LANKAN TOTAL-101,061 WARD AVERAGE-161.7
---	--	---	---	---

Data Source: London Datastore(2011)Detailed Ethnicity by Age & Sex Ward Tools (2011 Census), Mayor of London,CT0222

Hidden Communities

<Excavating> Placeless Cultures in Post colonial London by Commensality

“There is no **London** effect, there is **Localities** effect”

Mapping
London Localities Map
Adam Towle-Mark Brearley



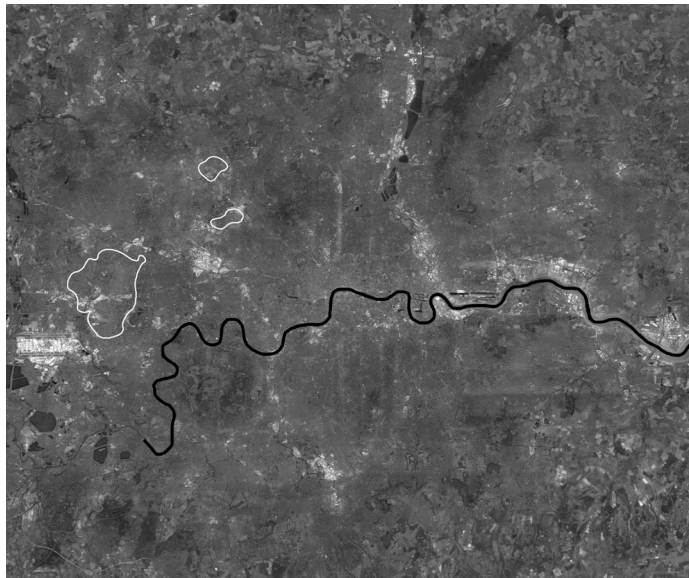
Hidden Communities

<Excavating> Placeless Cultures in Post colonial London by Commensality

Mapping
Catalogue



001-AFGHAN
TOTAL-44,505
WARD AVERAGE-71.21



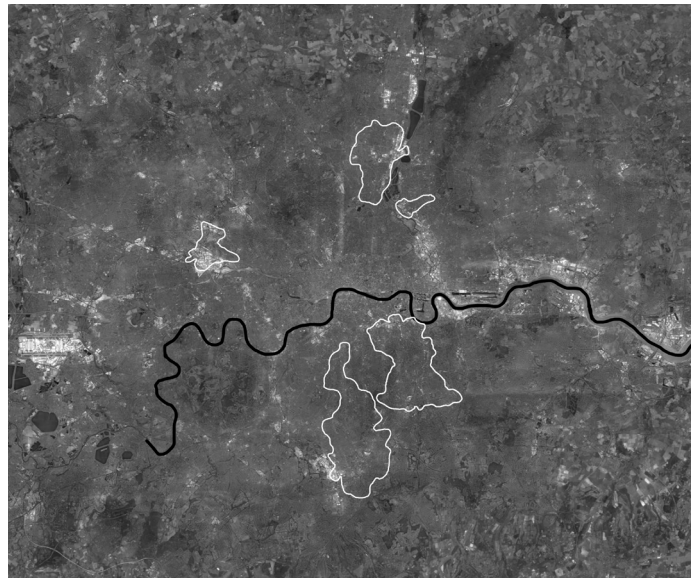
Hidden Communities

<Excavating> Placeless Cultures in Post colonial London by Commensality

Mapping
Catalogue



010-CARRIBBEAN
TOTAL-475,347
WARD AVERAGE-760.6



Mapping
London Ethnic Stains Map



Ethnoscapes

Ethno;; <People>

Scape;; <material shape and meaning given by human action>

Ethnoscapes
Networks of Connection



-Where does your community live?

-Places where turkish people live are actually predetermined. It is mostly Dalston, Stoke Newington high street, Harringey or Essex

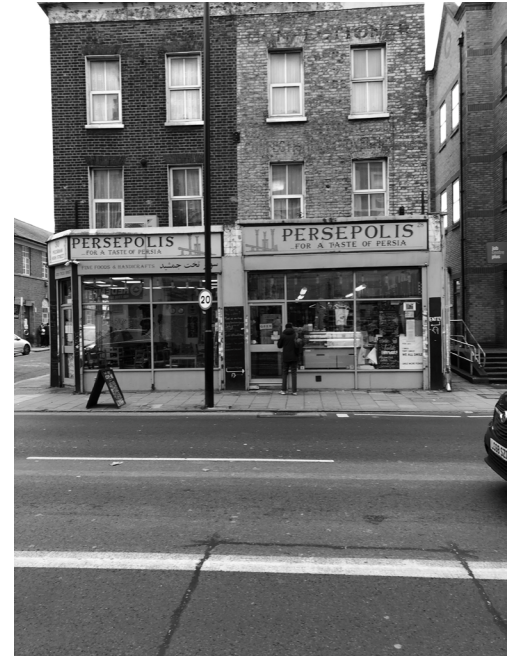
-Why do you think people choose these locations? Why did you choose this place?

-It is mostly **networking**. The first reason is the language. finding someone you can communicate with to overcome the language barrier. **Secondly it is the feeling of safety**. Since you are new, you first try to find your space in city where you can communicate and find your needs easily. For example, I found my house through these connections. I found my lawyer who is helping me through my asylum application through these **connections**. And since you have an instant connection through language, and you need safety normally you trust people you can communicate more.

Hidden Communities

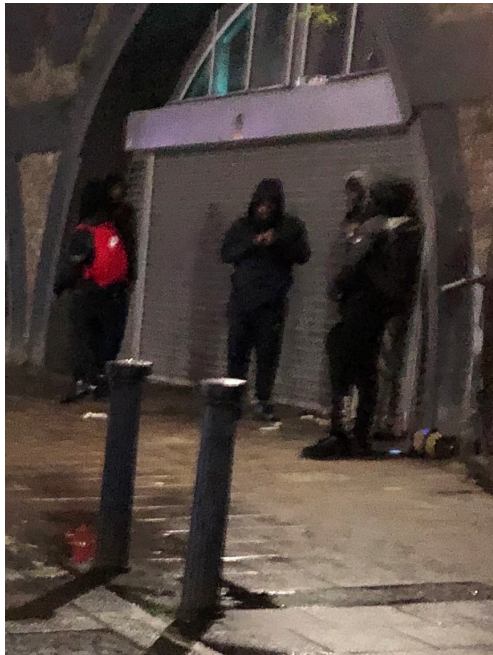
<Excavating> Placeless Cultures in Post colonial London by Commensality

Ethnoscapes <Urban Scale>
Network points of sense of belonging



Ethnoscapes<Human Scale>

Network points of sense of belonging



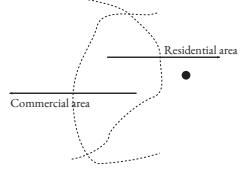
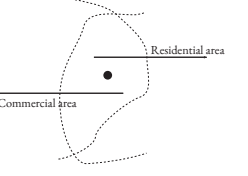
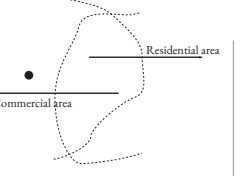
“And with that conversation it becomes real and tangible, for once we’ve declared a possibility, and done so with a sense of belonging and in the presence of others, that possibility has been brought into the room, and thus into the institution, into the community.”

Hidden Communities

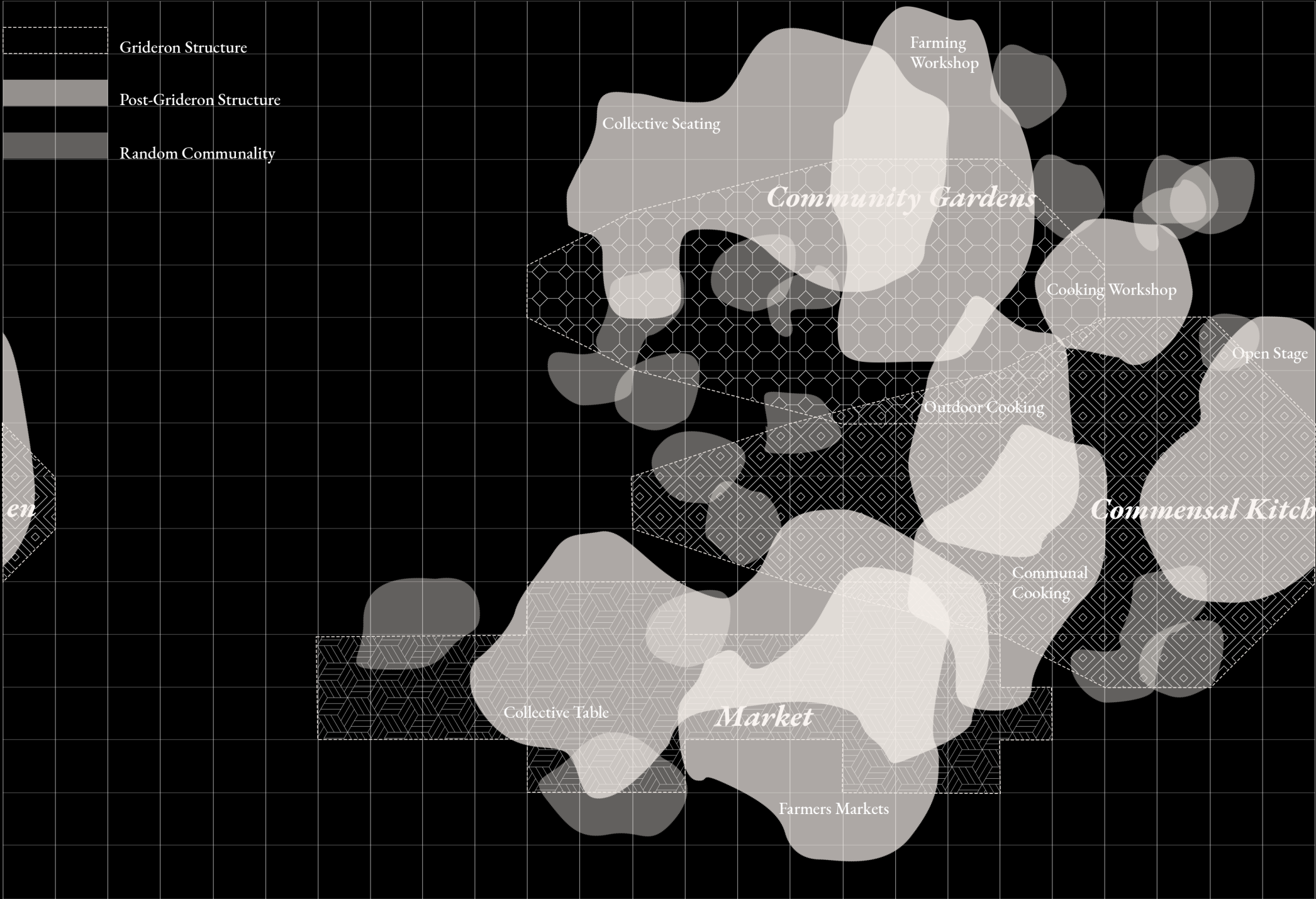
<Excavating> Placeless Cultures in Post colonial London by Commensality



Intervention Matrix
 Causes of gatherings

 <p><i>Communalty</i></p>	 <p><i>Commensality</i></p>	 <p><i>Conviviality</i></p>	<p><i>Geography</i></p>
<p>Production of Place</p>	<p>Production of Place Construction of Space</p>	<p>Construction of Space</p>	<p><i>Structure</i></p>
<p>Collective Housing</p>	<p>Communal Kitchen <i>Urban Dining Room</i></p>	<p>Market</p>	<p><i>Spatial Agency</i></p>
<p>Residents</p>	<p>Community</p>	<p>Neighbourhood</p>	<p><i>Scale</i></p>
<p>Togetherness in Privacy</p>	<p>Togetherness in Common</p>	<p>Togetherness in Public</p>	<p><i>Mode of Production</i></p>
<p>Timber</p>	<p>Timber/ Memorabilia</p>	<p>Timber</p>	<p><i>Materiality</i></p>
<p>Unused</p>	<p>Unbuilt <i>Urban Farm</i></p>	<p>Vacant <i>Unused</i></p>	<p><i>Site Condition</i></p>
	<p>Local Community(ies) <i>Locals community groups</i> <i>Families/Guests</i> <i>Neighbourhood schools</i> <i>Brixton Neighbourhood Forum</i> <i>Cooking schools</i> <i>Mazi Mas London</i></p>	<p>Commercial Actors <i>Lambeth Borough Council</i> <i>Brixton Market Shops</i> <i>Neighbourhood Entrepreneurs</i></p>	<p><i>Actors</i></p>

0 1 2 3 4 5 6 7 8 9 10 11 12 13 14 15 16 17 18 19 20 21 22 23 24 24



Grideron Structure

Post-Grideron Structure

Random Communality

Farming Workshop

Collective Seating

Community Gardens

Cooking Workshop

Open Stage

Outdoor Cooking

Commensal Kitchen

Communal Cooking

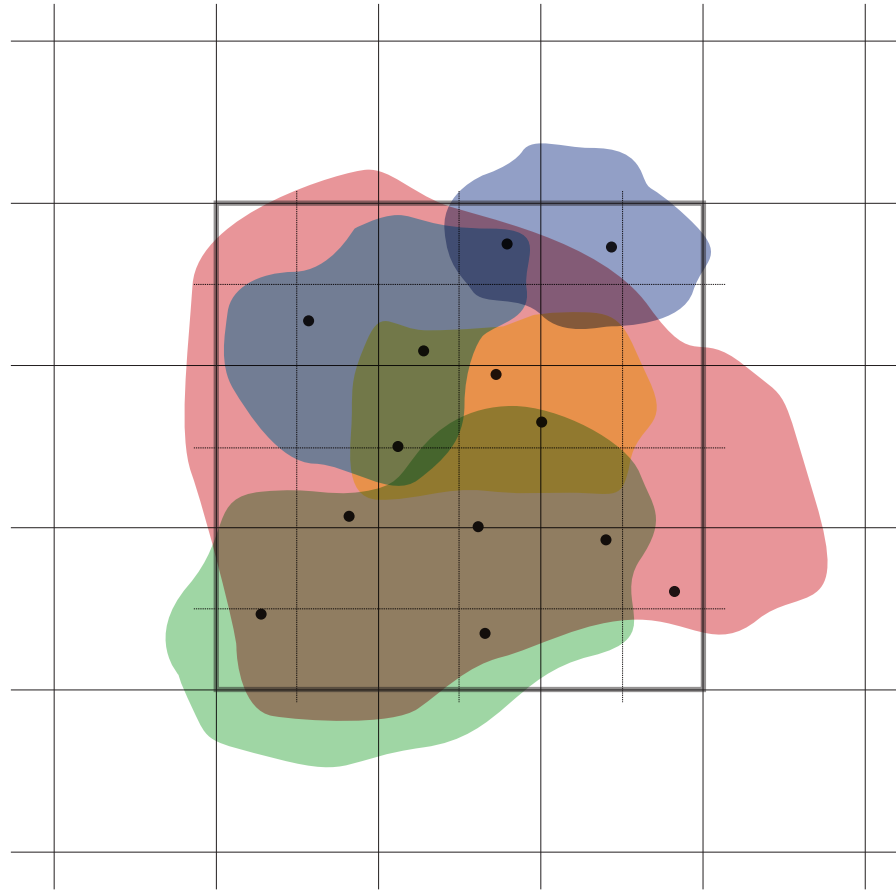
Collective Table

Market

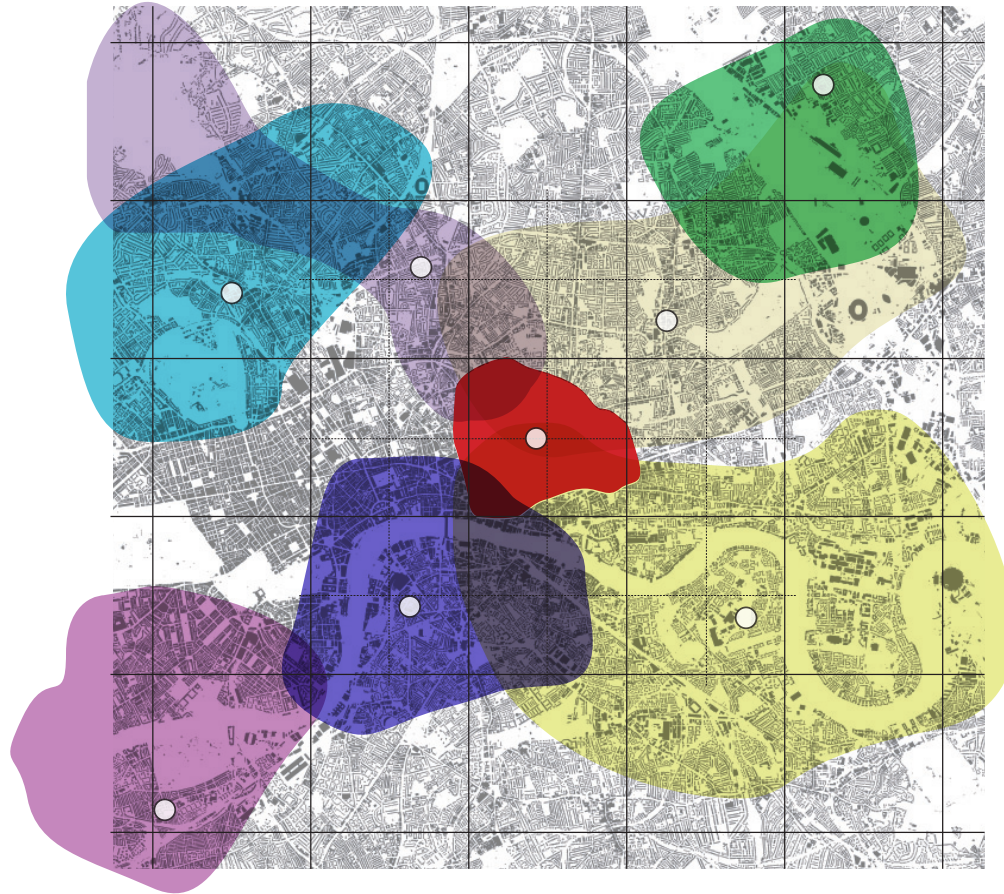
Farmers Markets

en

The place
Concept

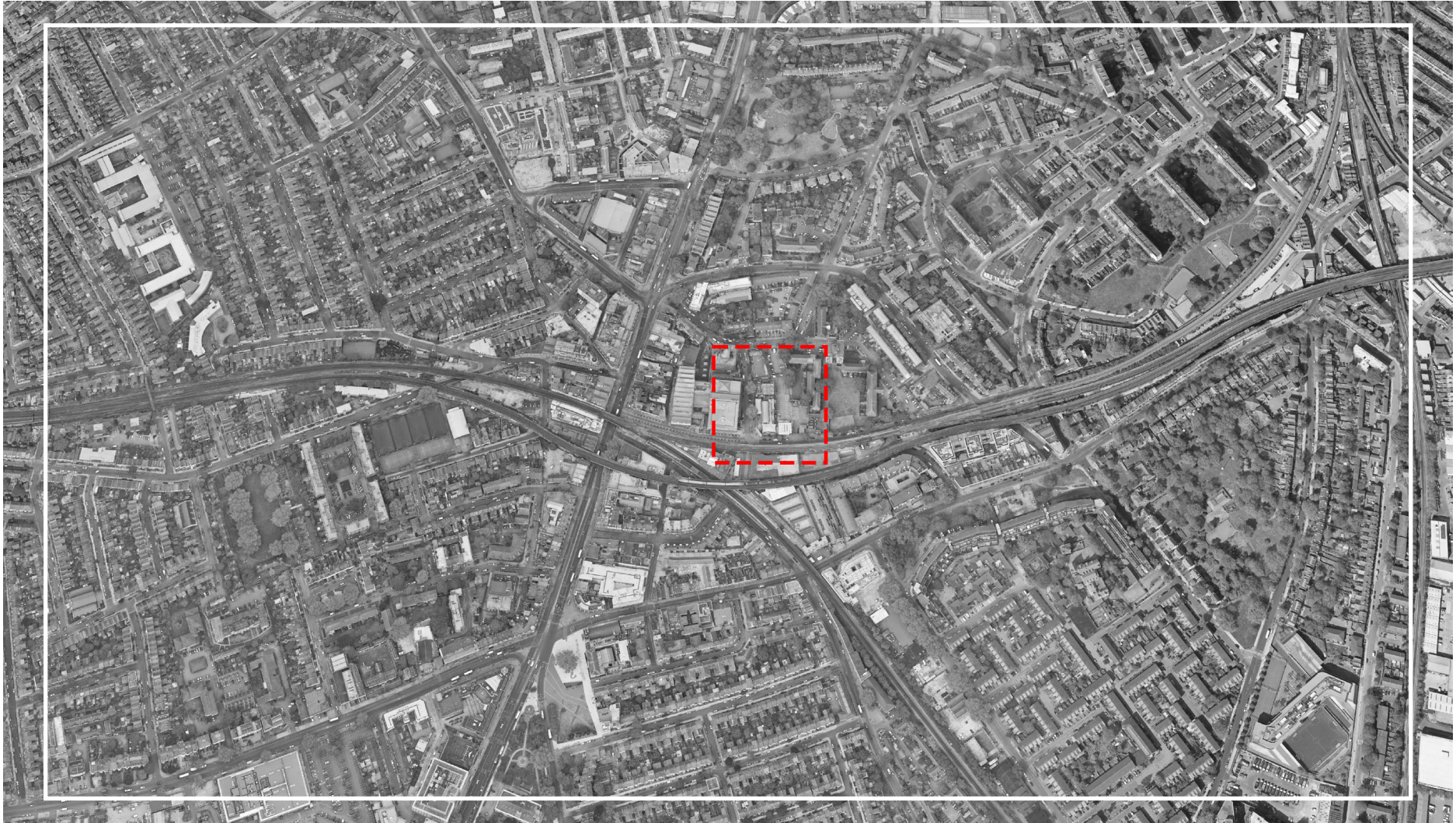


The place
Network

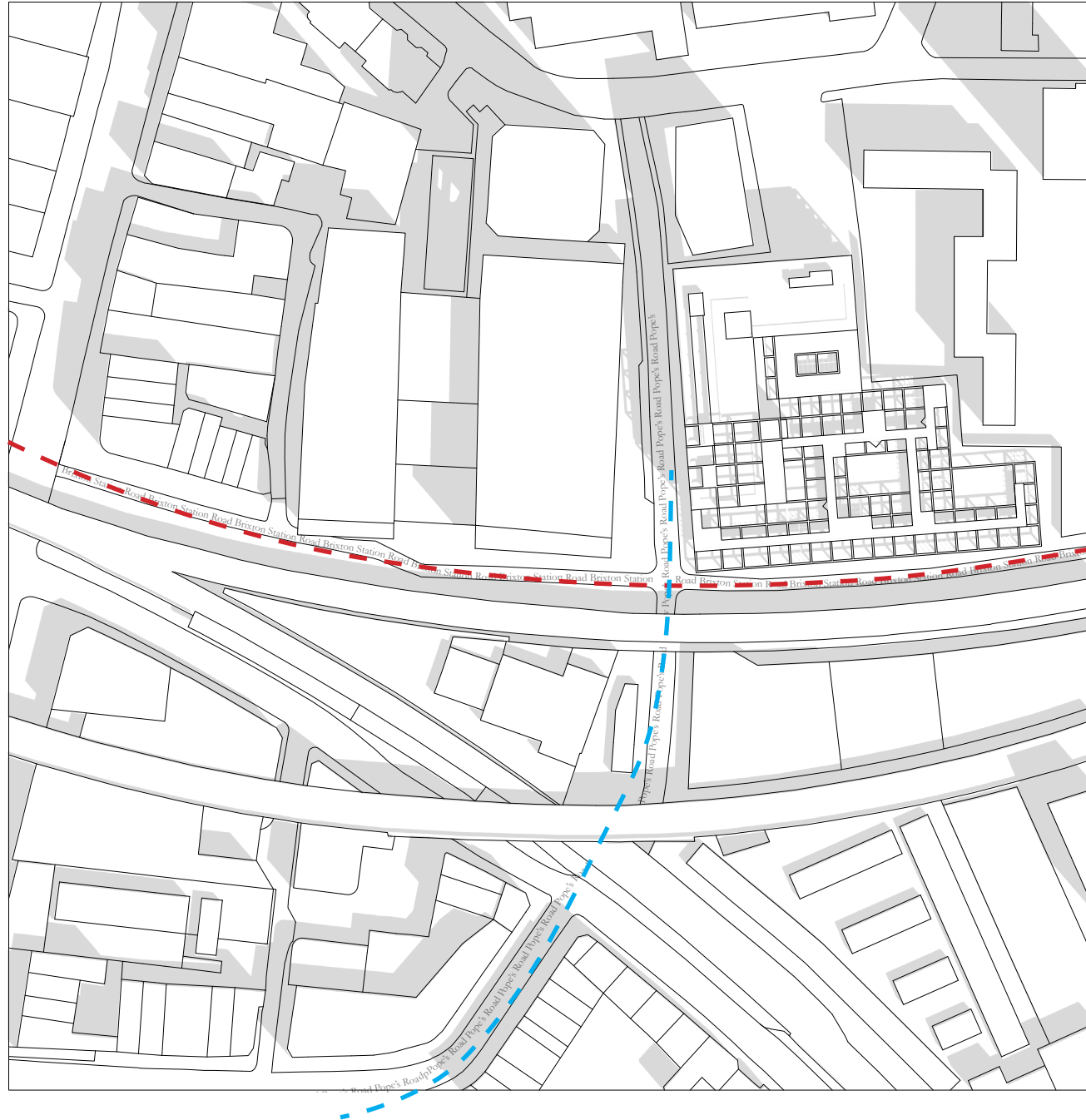




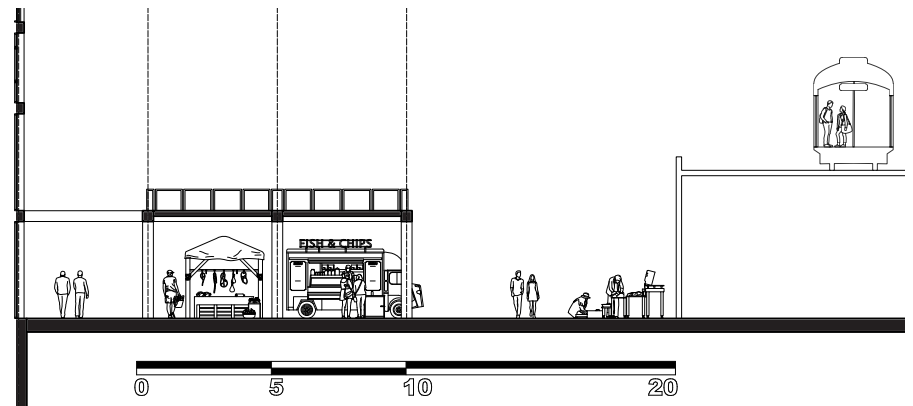
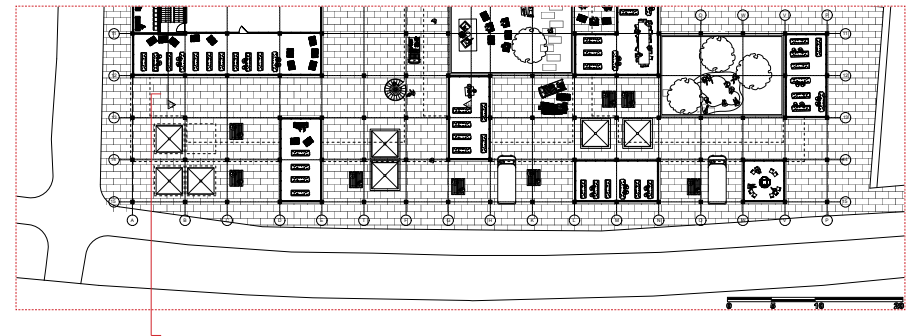
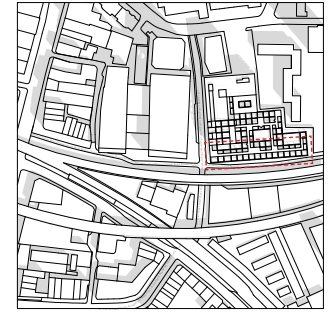
Site
Location



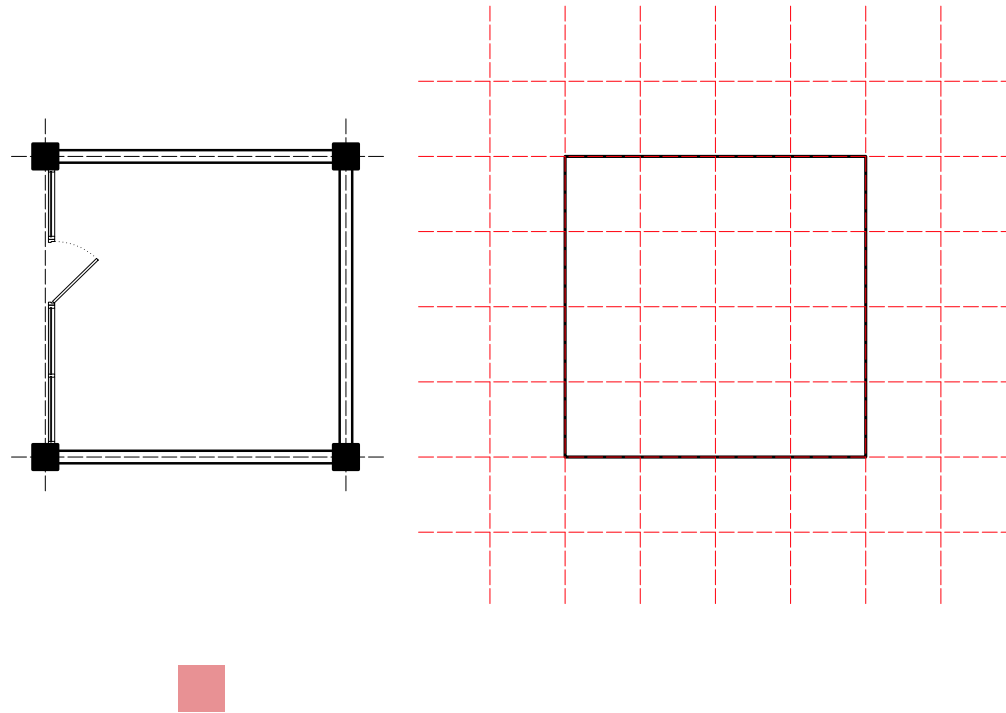
Site Plan



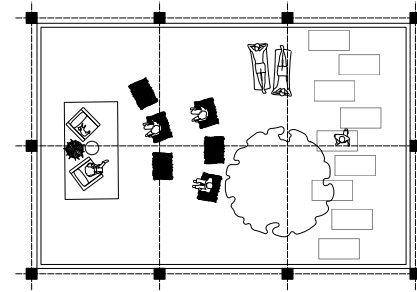
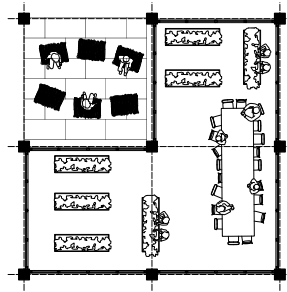
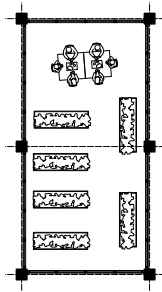
Site Approach



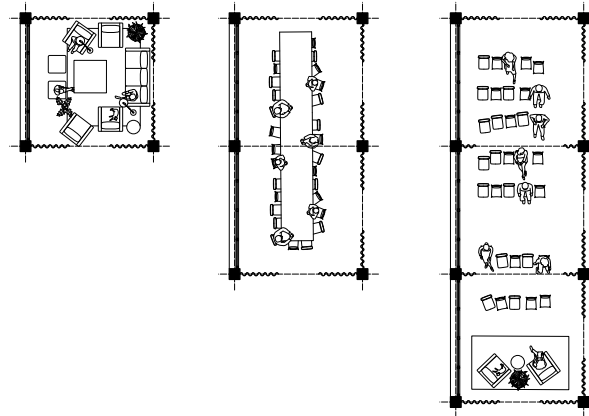
Modular Program



Modular Program
Hard Borders



Modular Program
Soft Borders



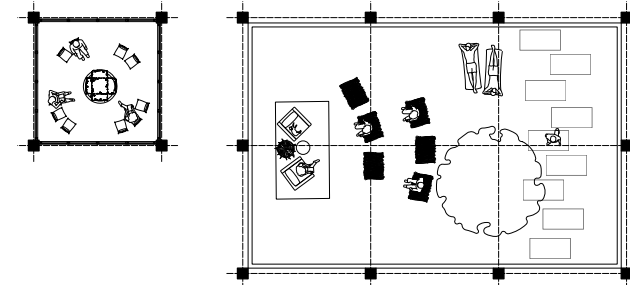
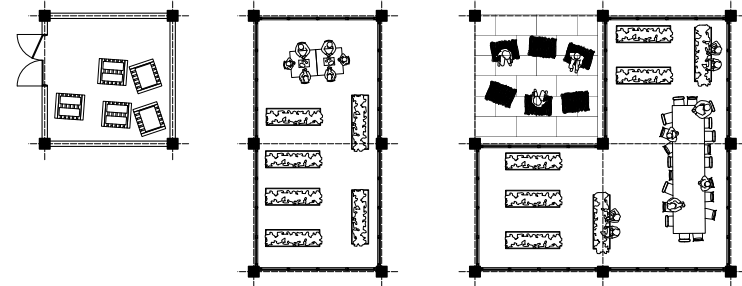
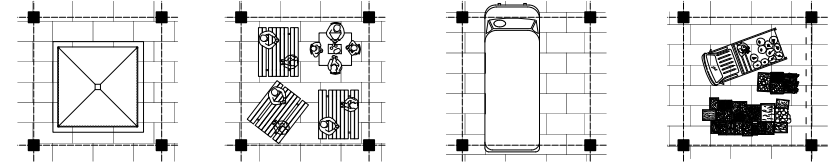
Ground Floor Plan



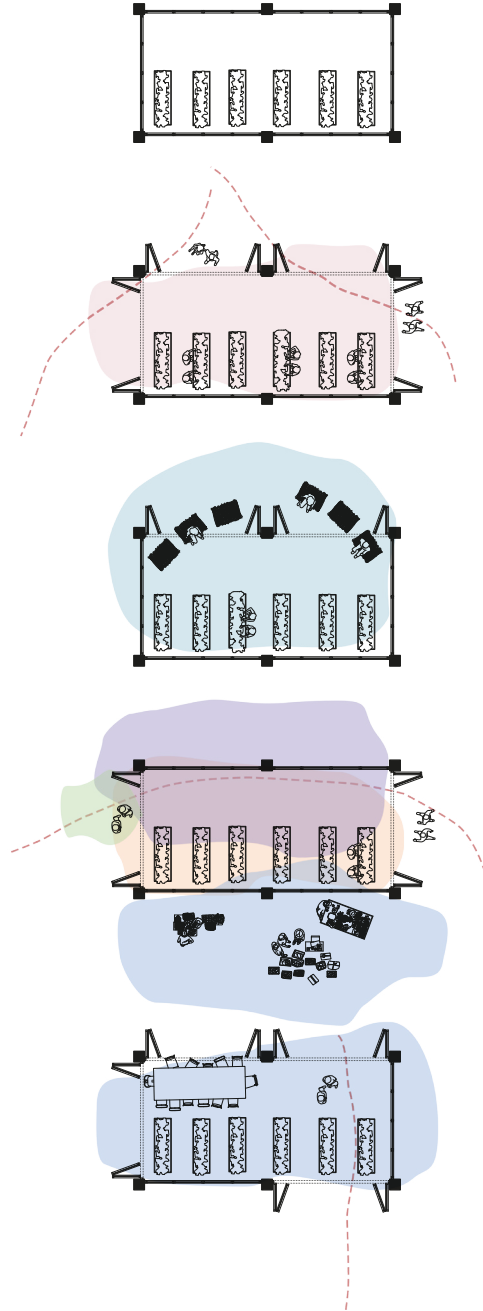
Market Square
Community Garden View



Market Square
Community Garden Program



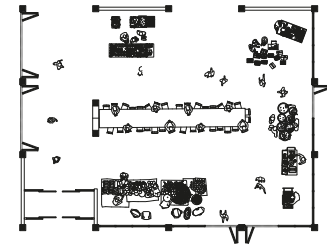
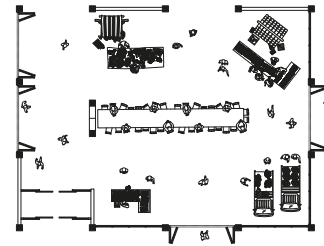
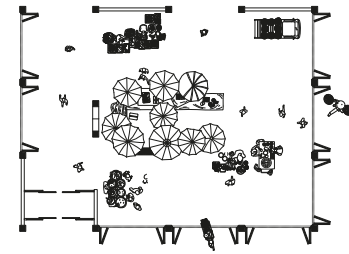
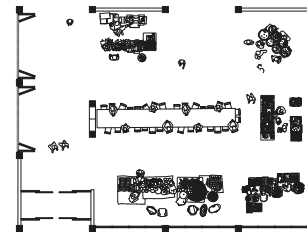
Market Square
Community Garden Temporality



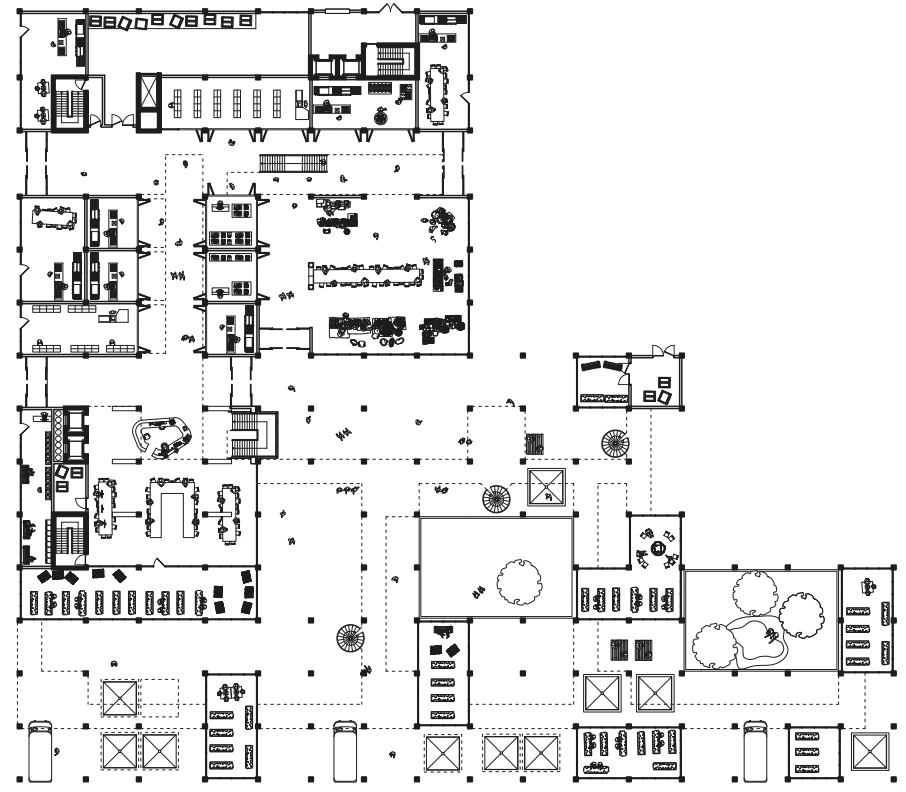
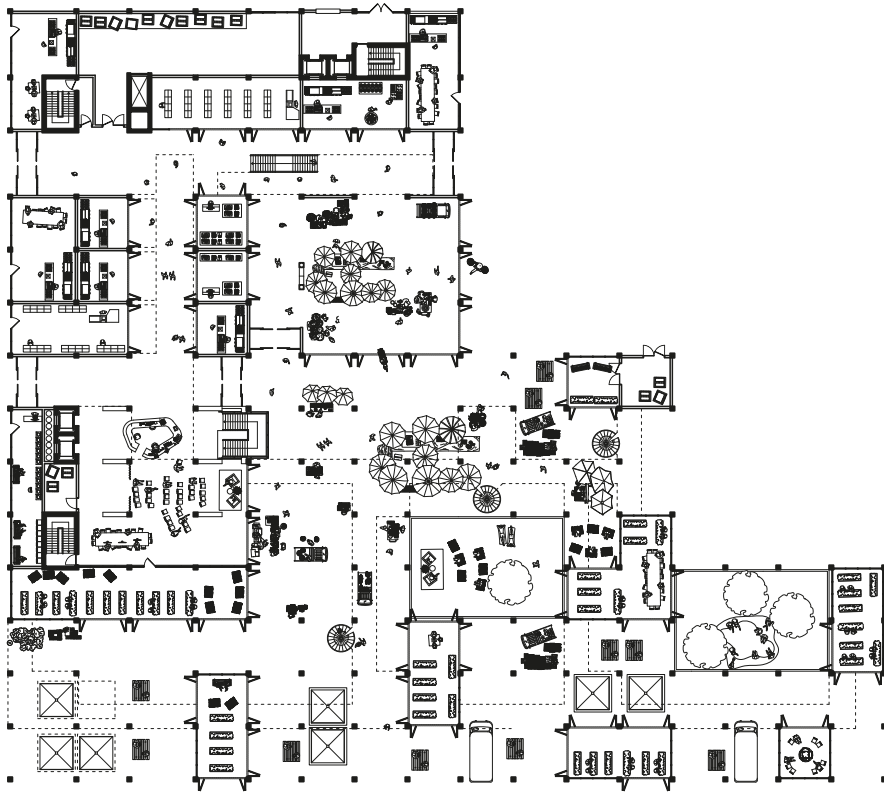
Entrance Corner



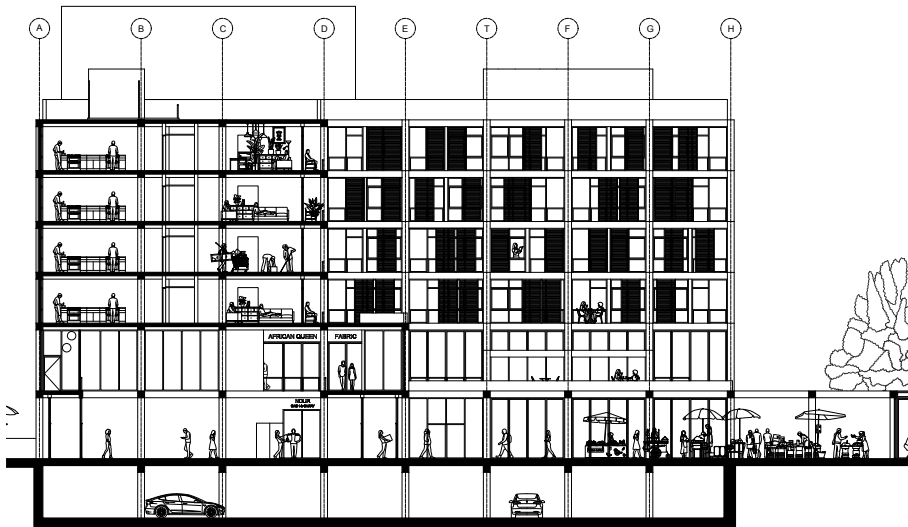
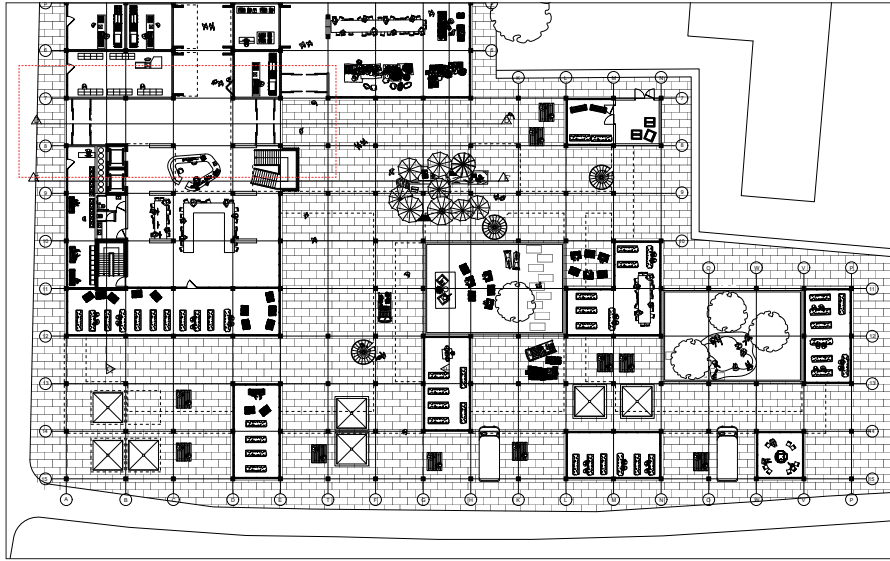
Market Temporality



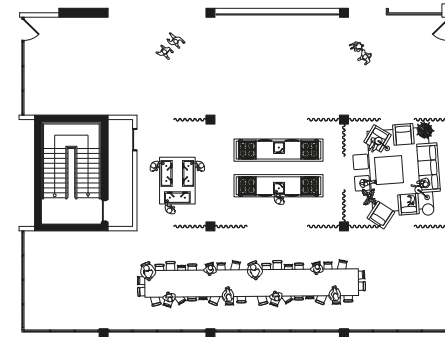
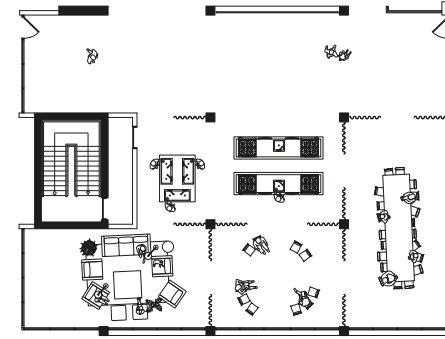
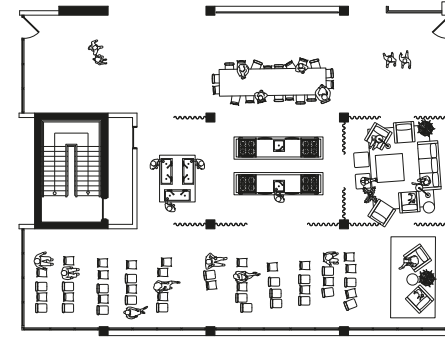
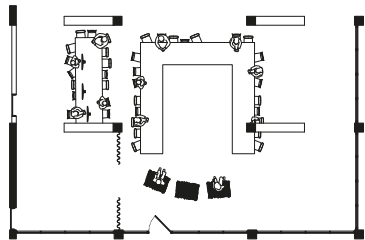
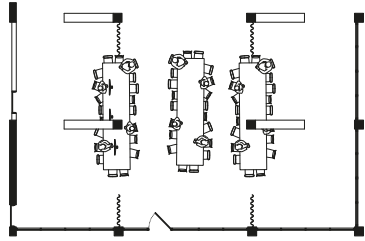
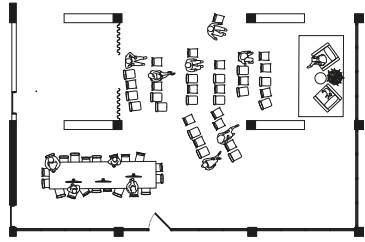
Market Sprawl



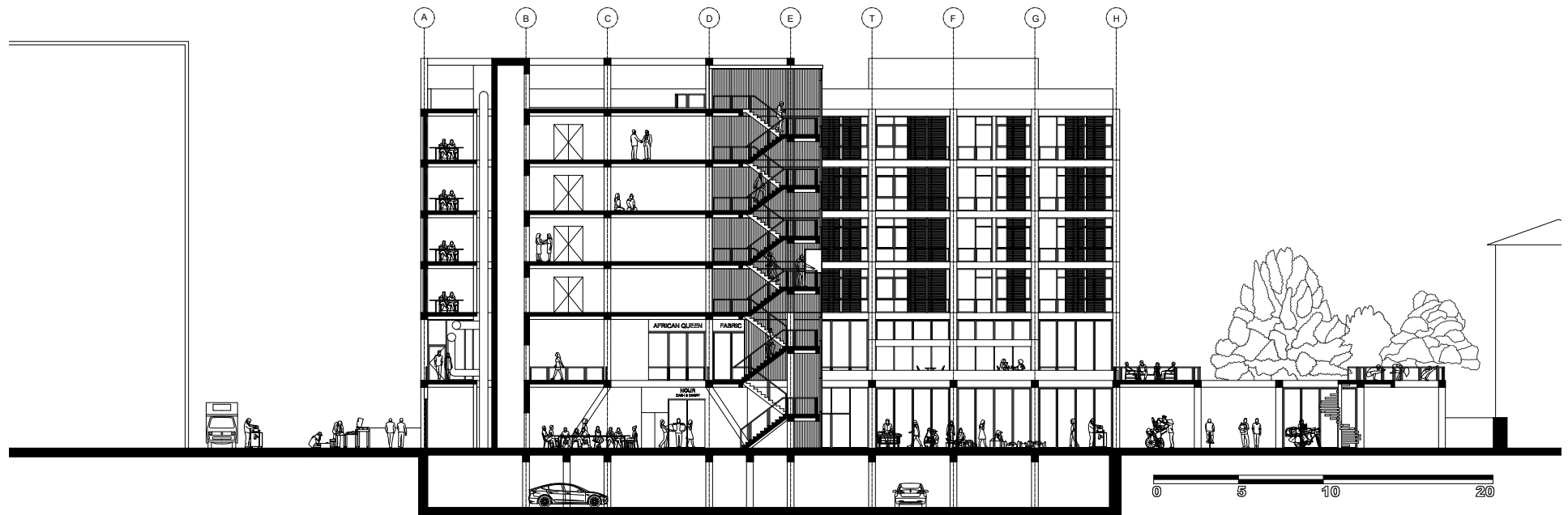
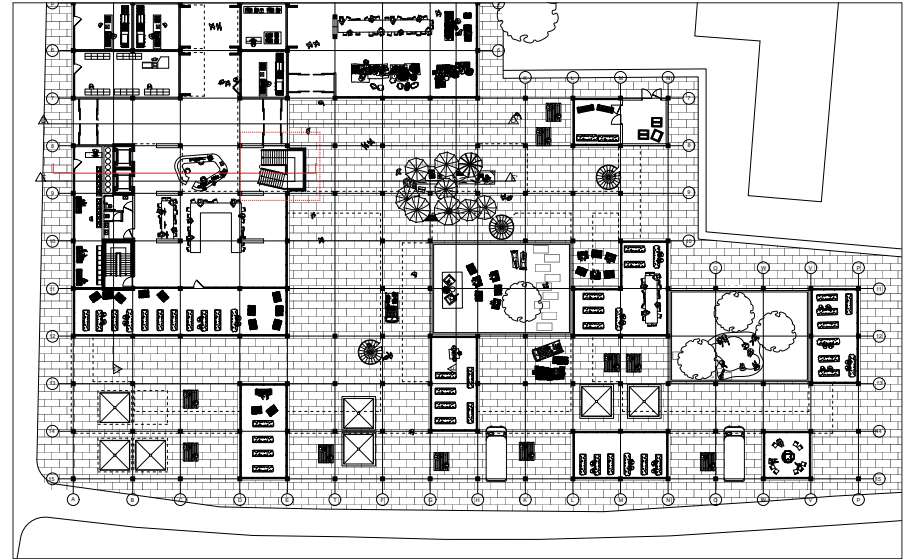
Main Entrance



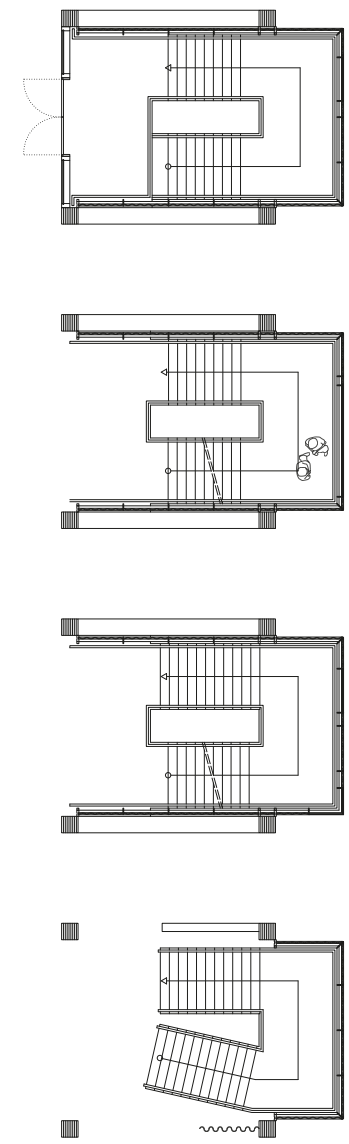
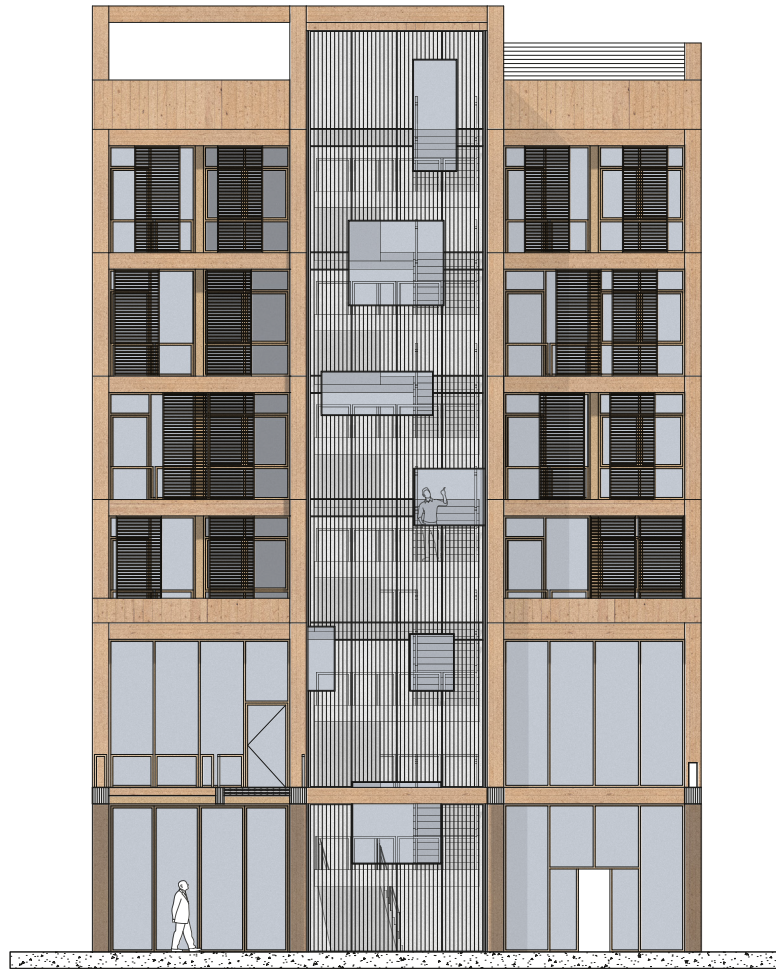
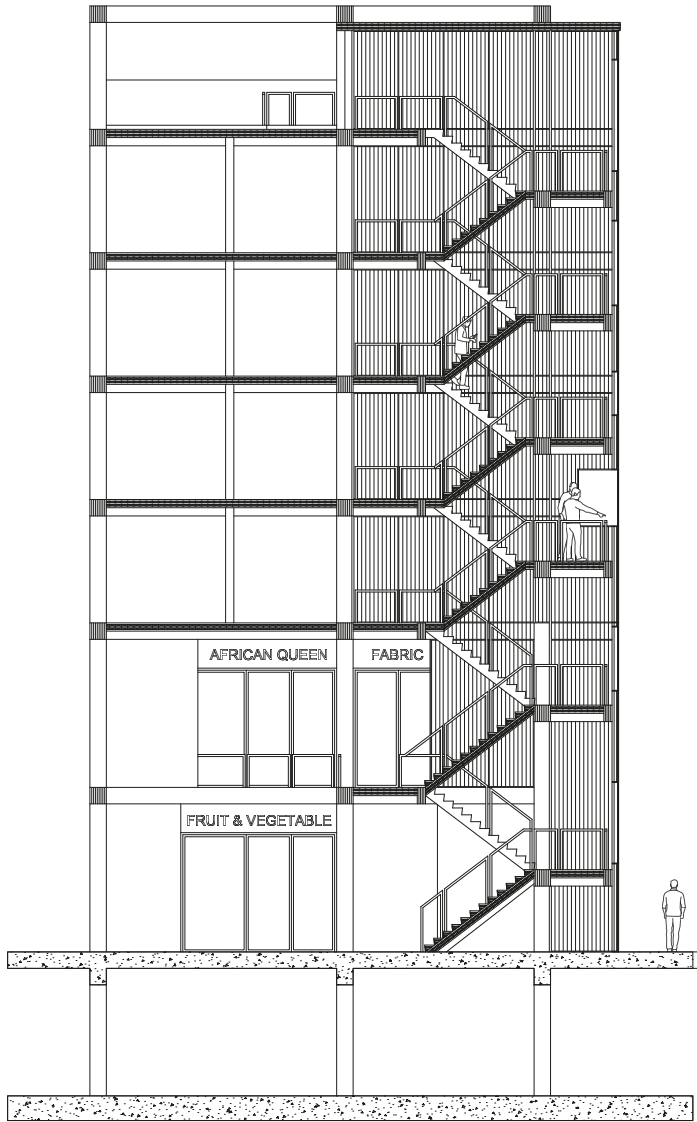
Market Entrance
Commensality Temporality



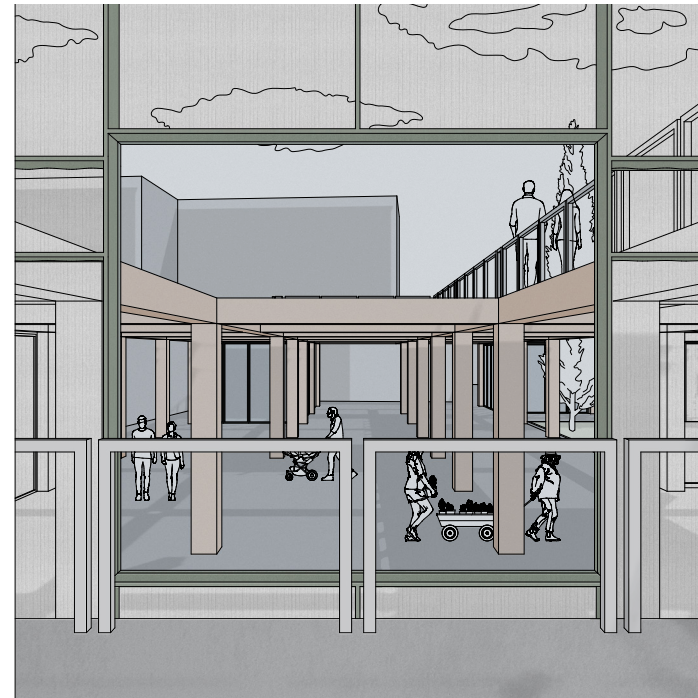
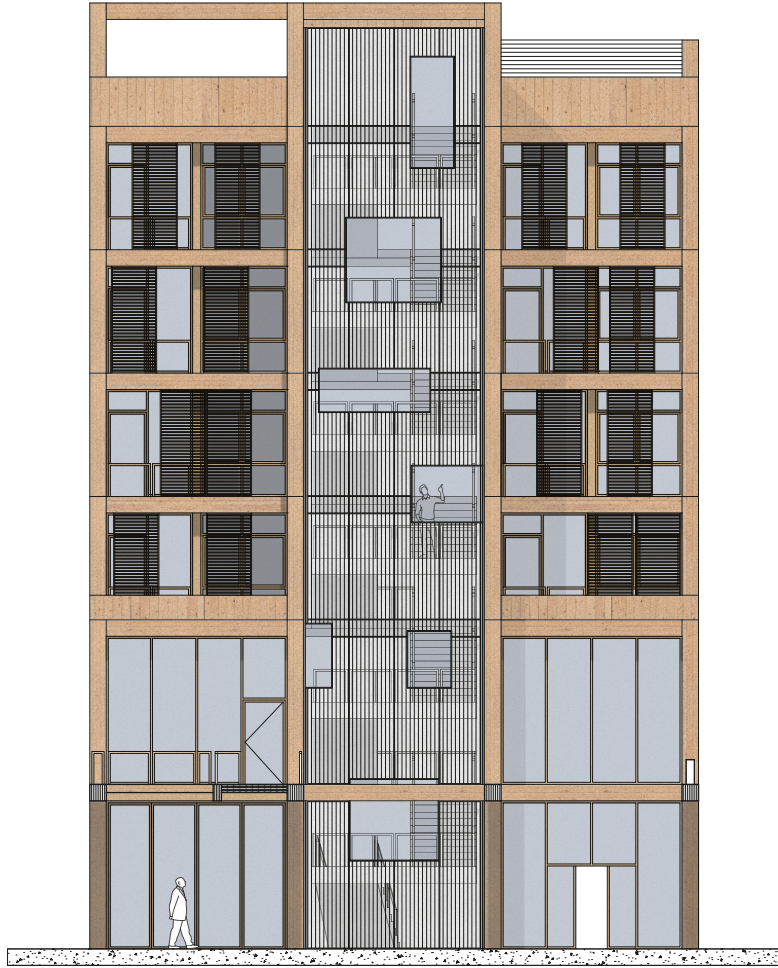
Main Staircase



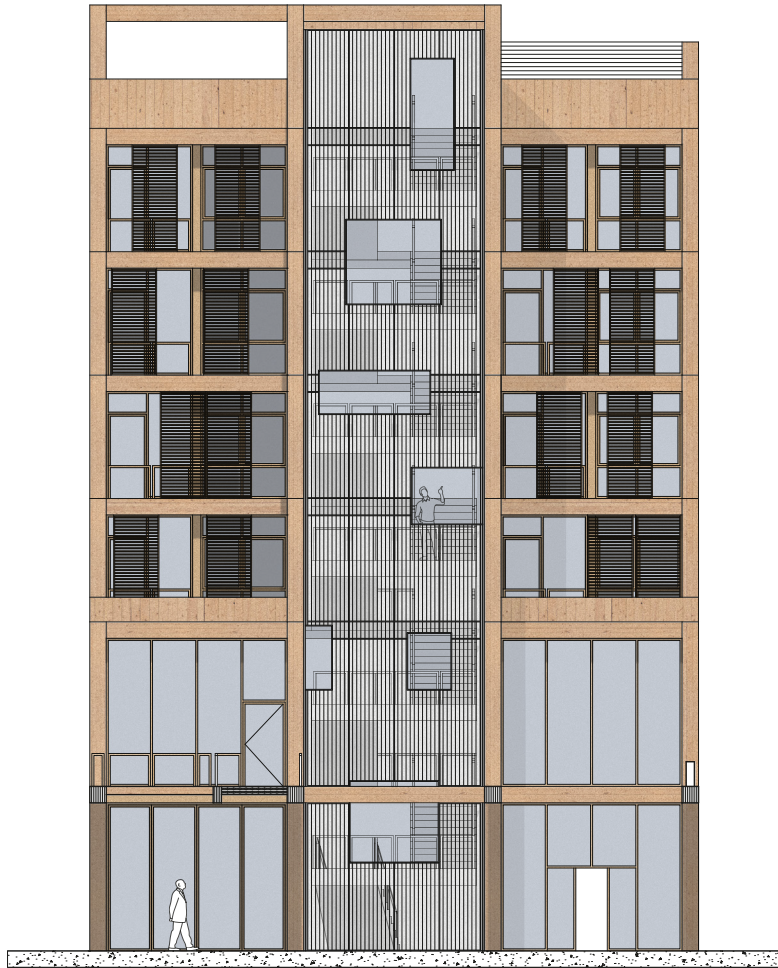
Main Staircase



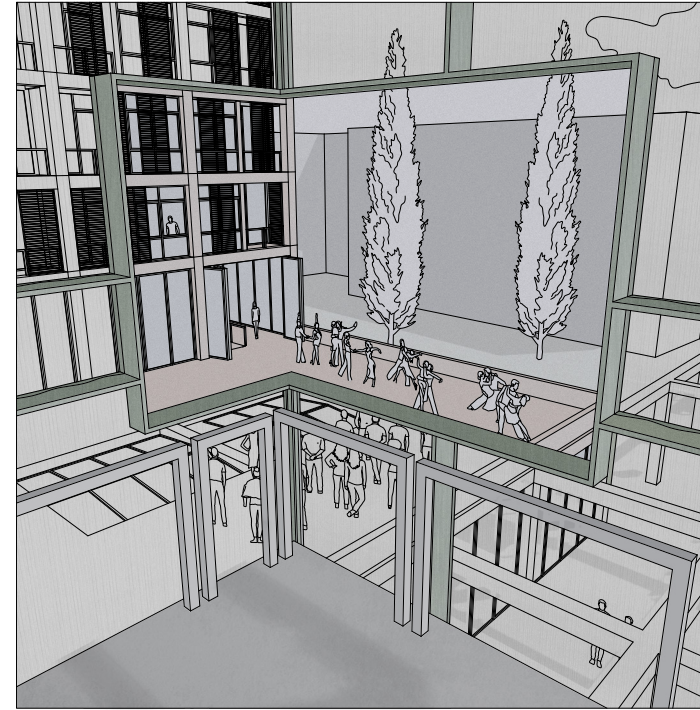
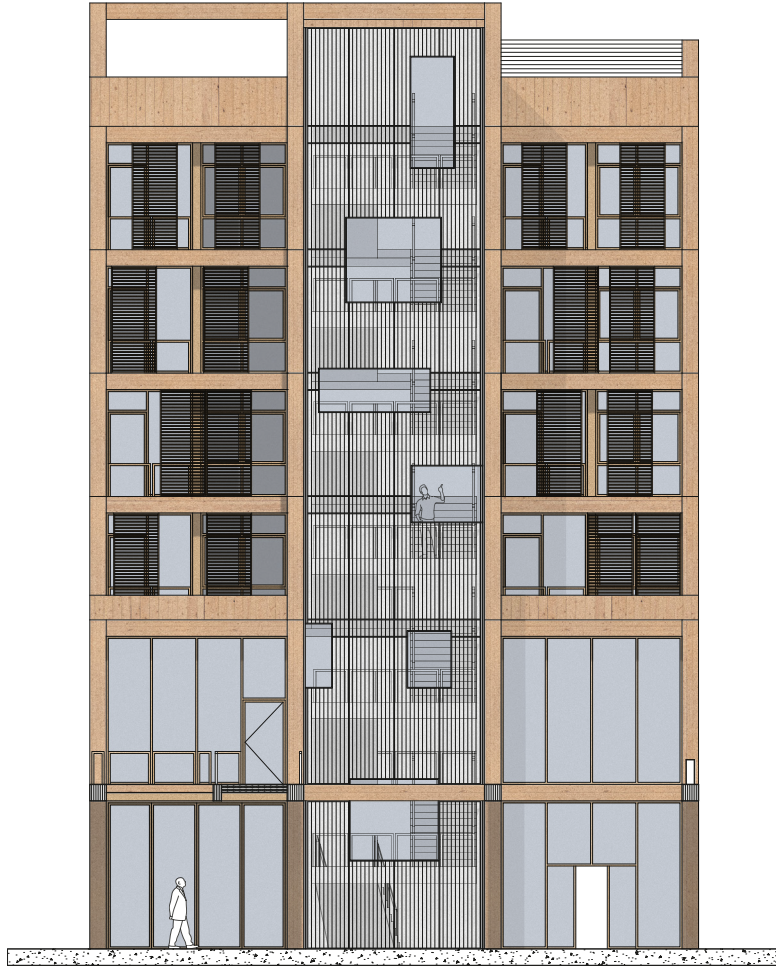
Main Staircase
Stor<e>y view



Main Staircase
Stor<e>y view



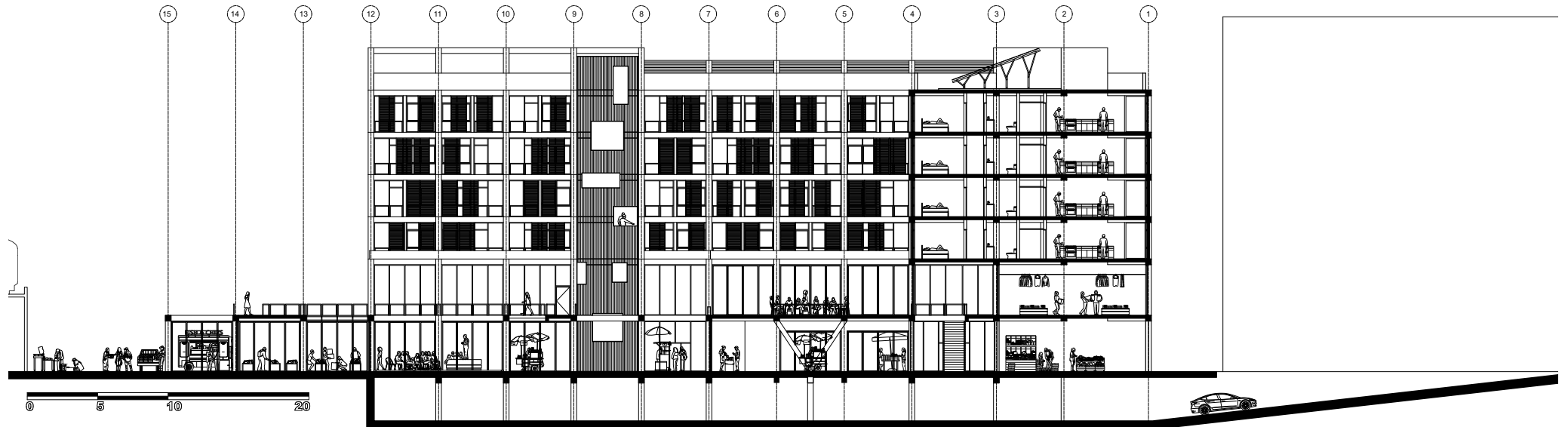
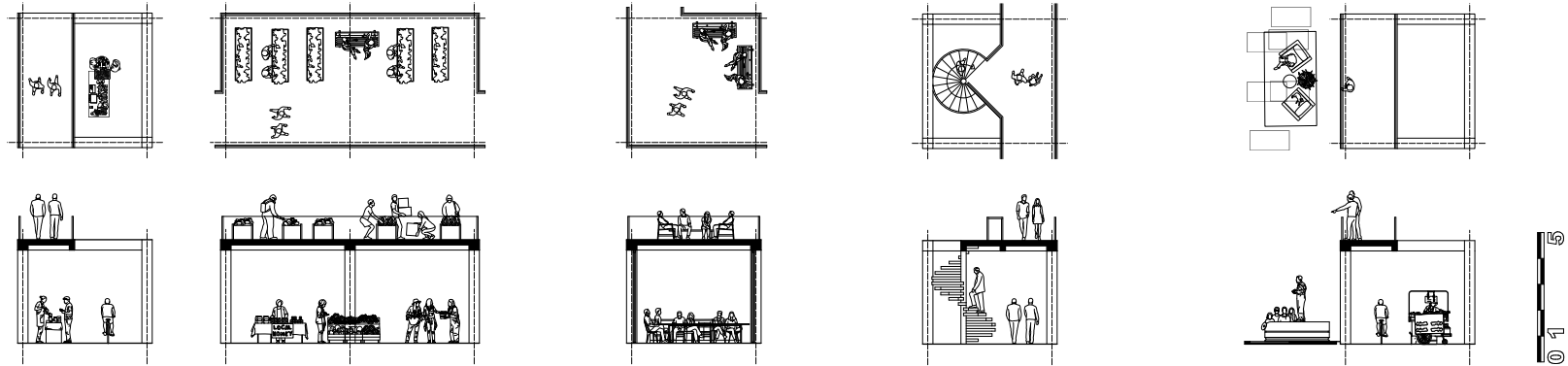
Main Staircase
Stor<e>y view



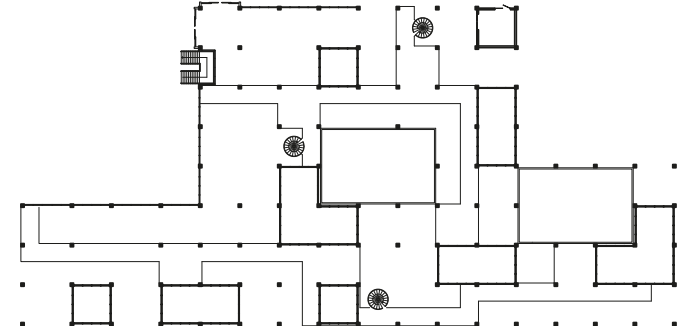
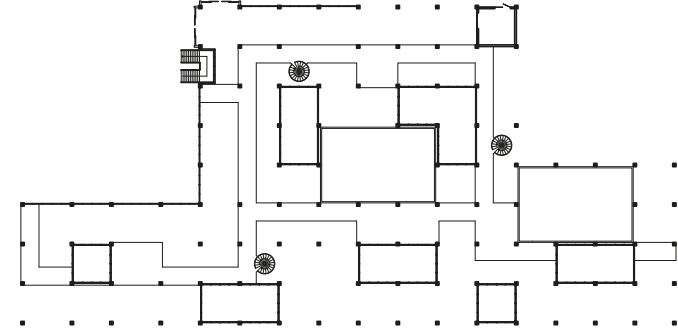
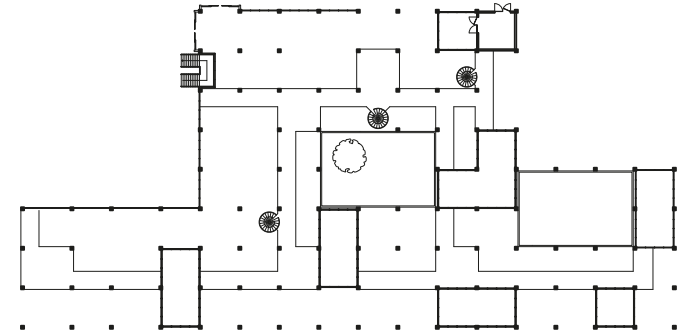
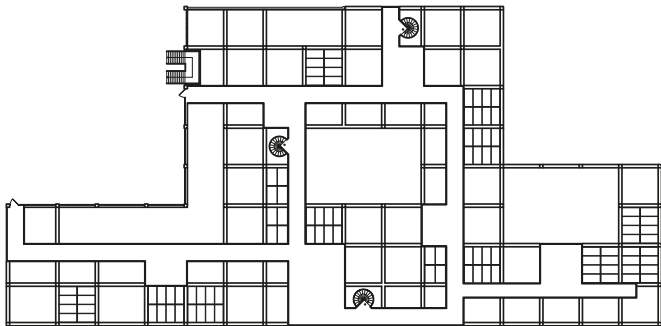
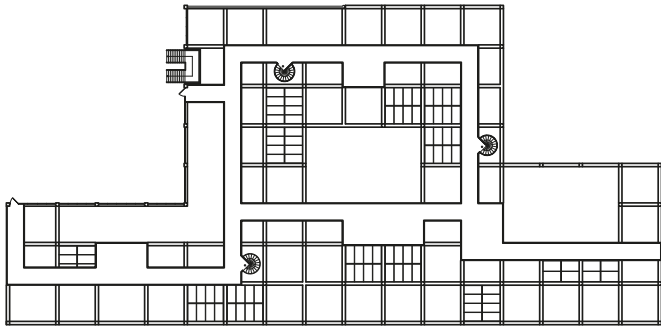
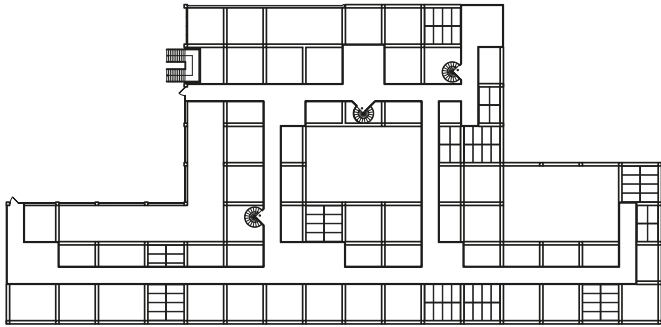
Second Floor Plan



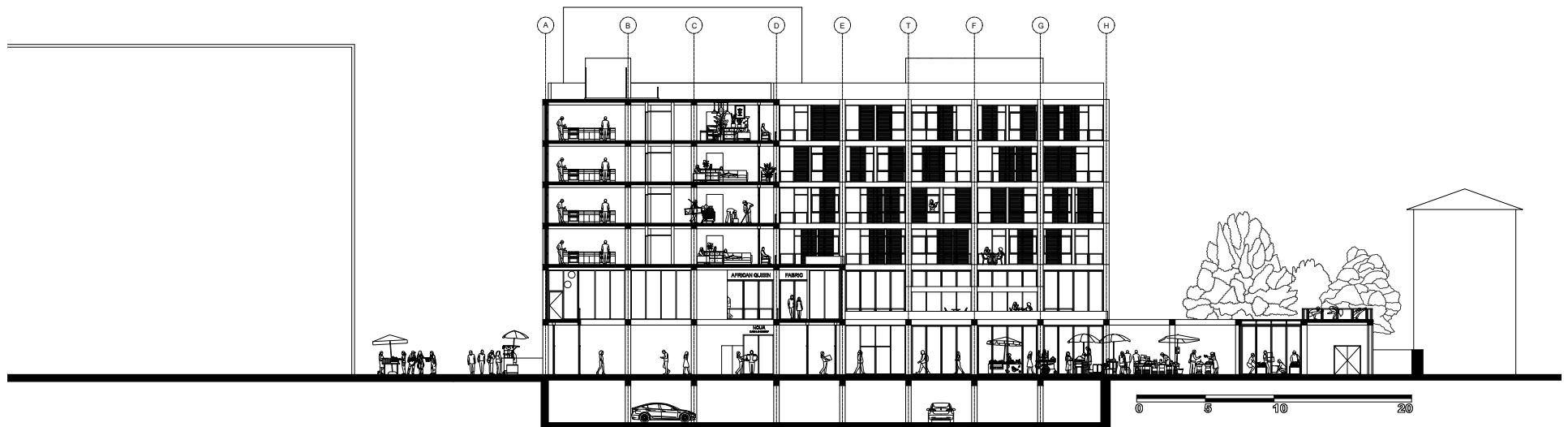
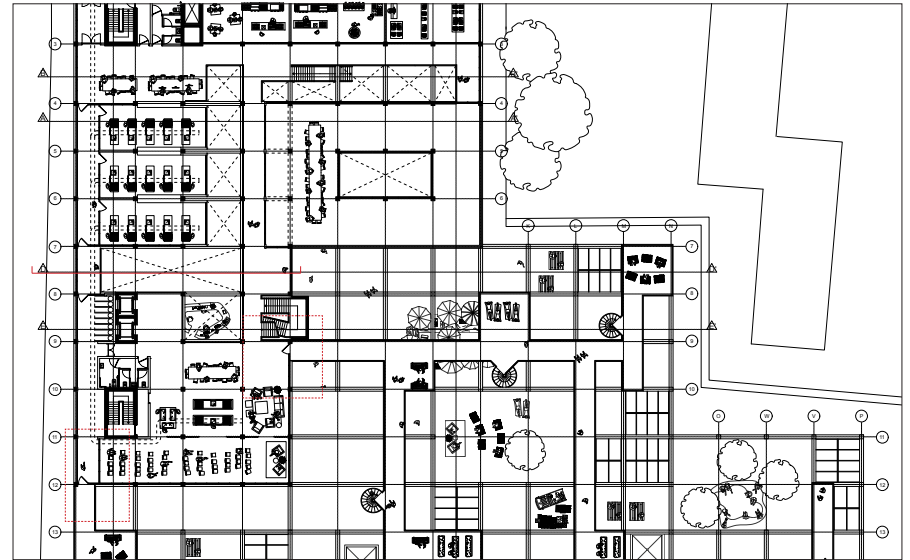
Pathways
Programme



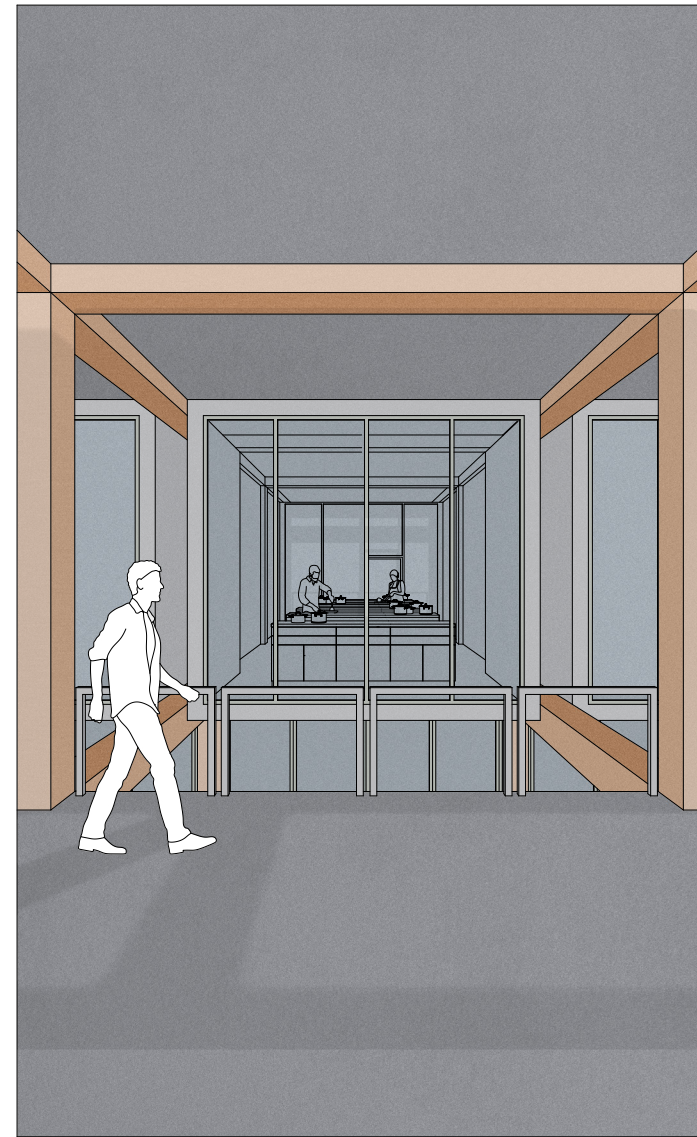
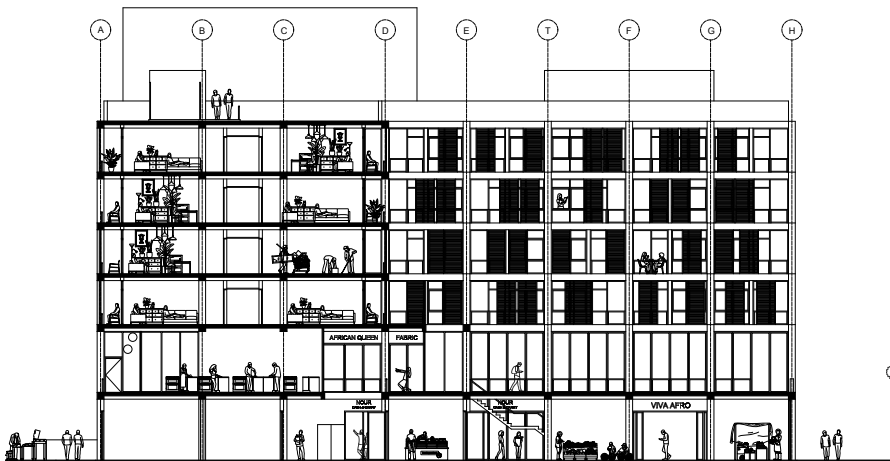
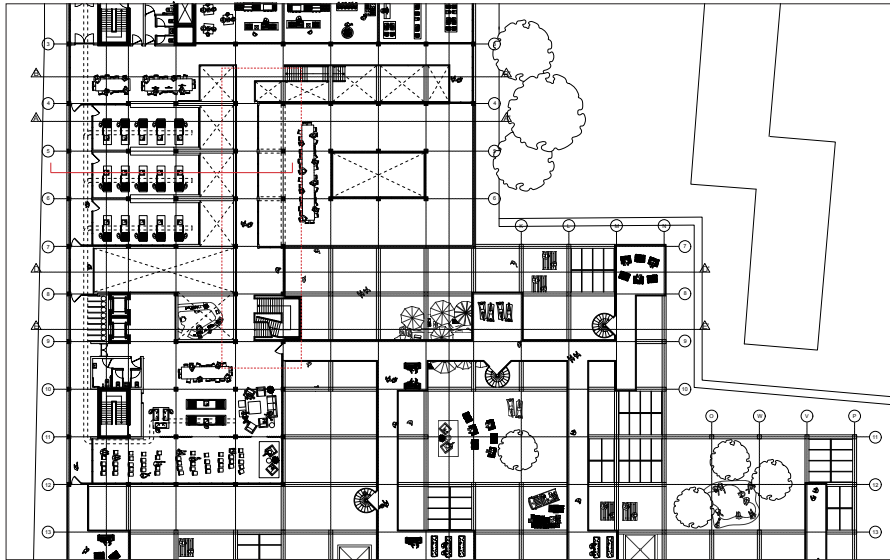
Pathways
Temporality



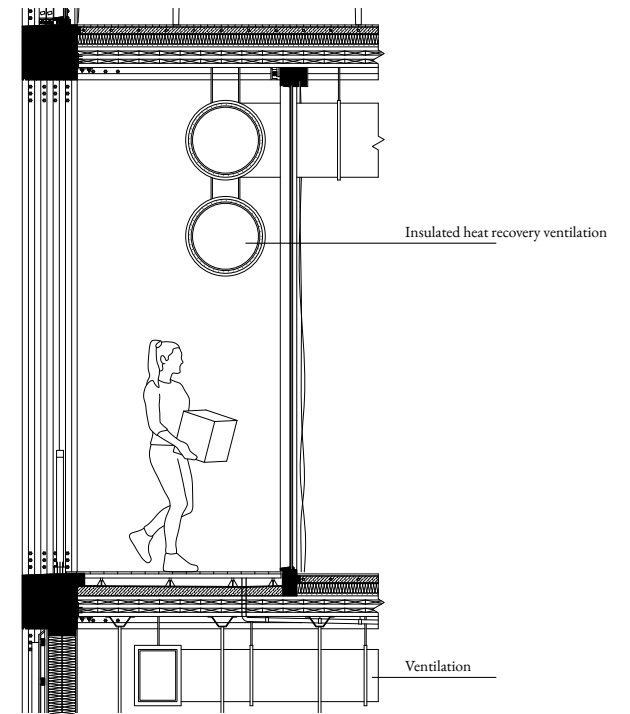
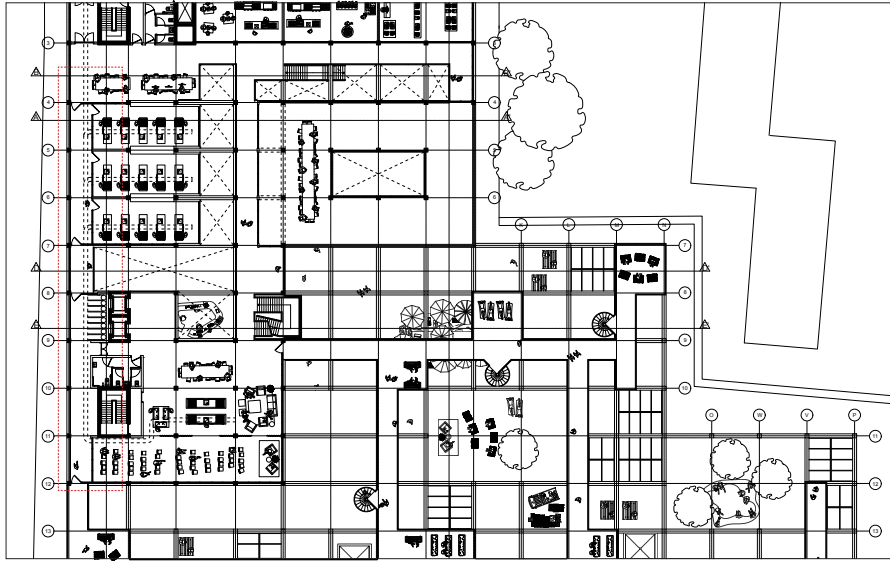
Pathways
Main Connections



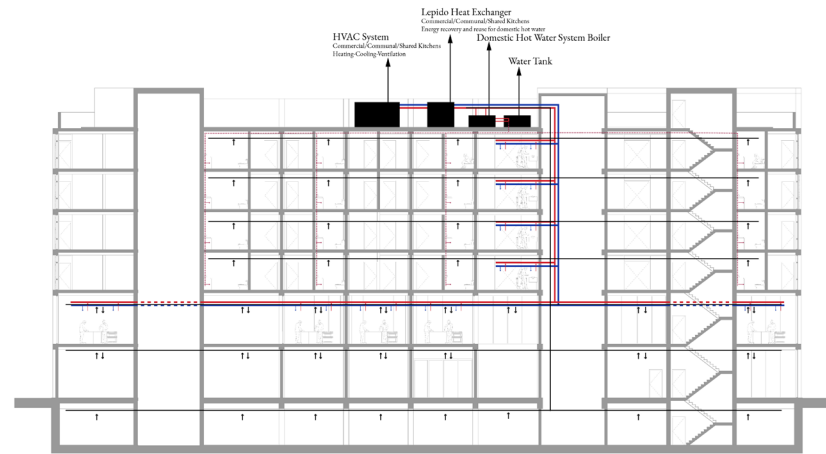
Pathways
Front of the house



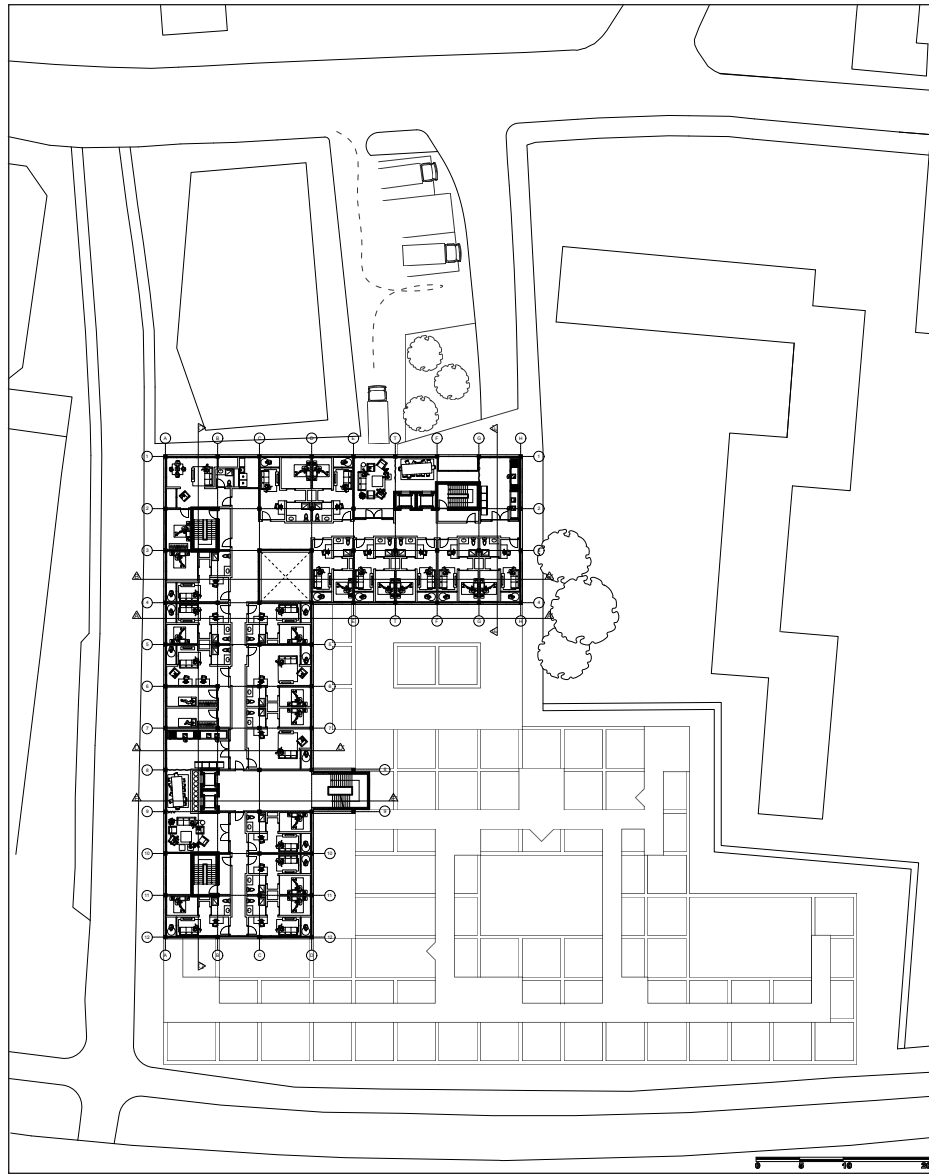
Pathways
Back of the house



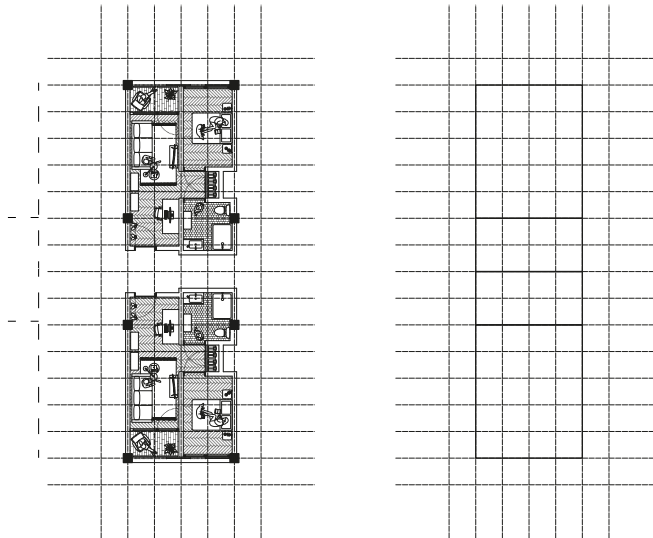
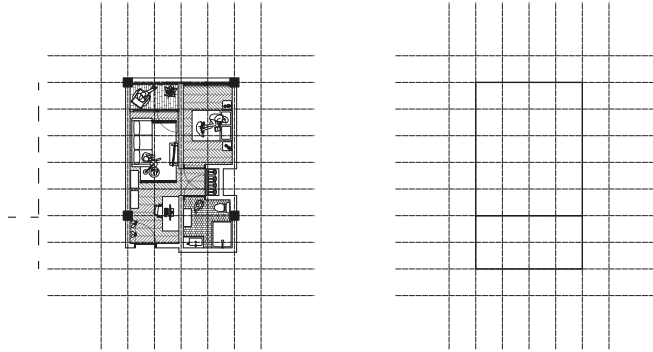
Energy Recovery
Back of the house



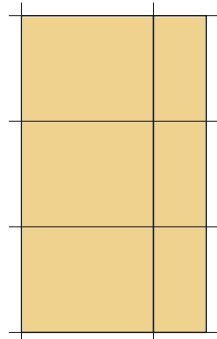
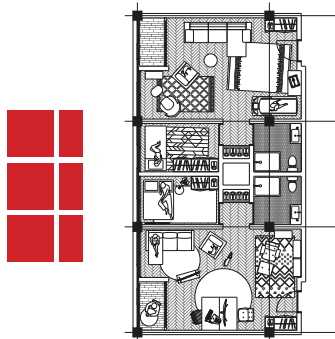
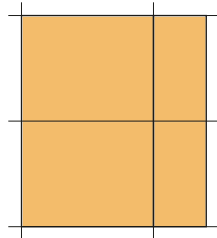
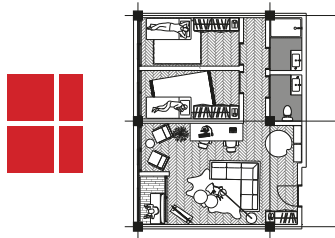
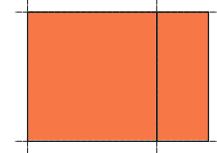
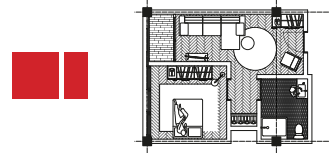
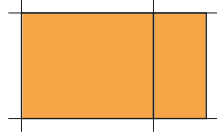
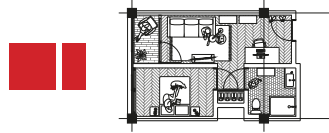
Residential Floor



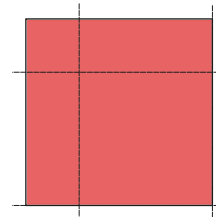
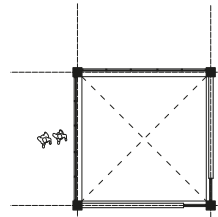
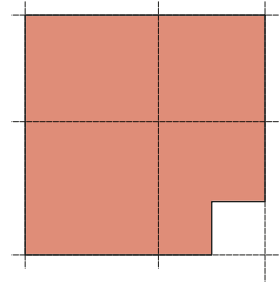
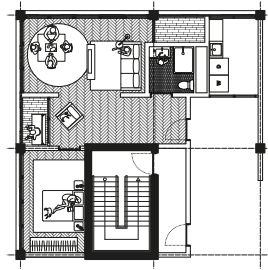
Modular Program
Residential Floor



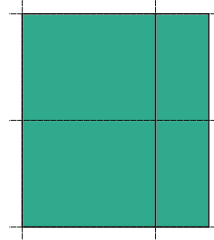
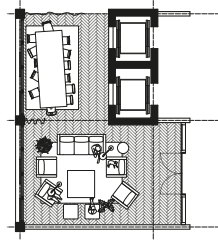
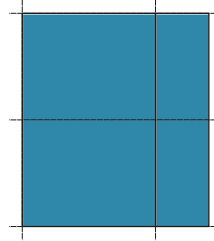
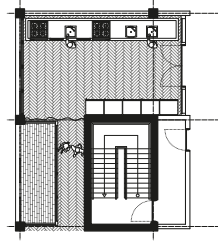
Modular Program
Base Module



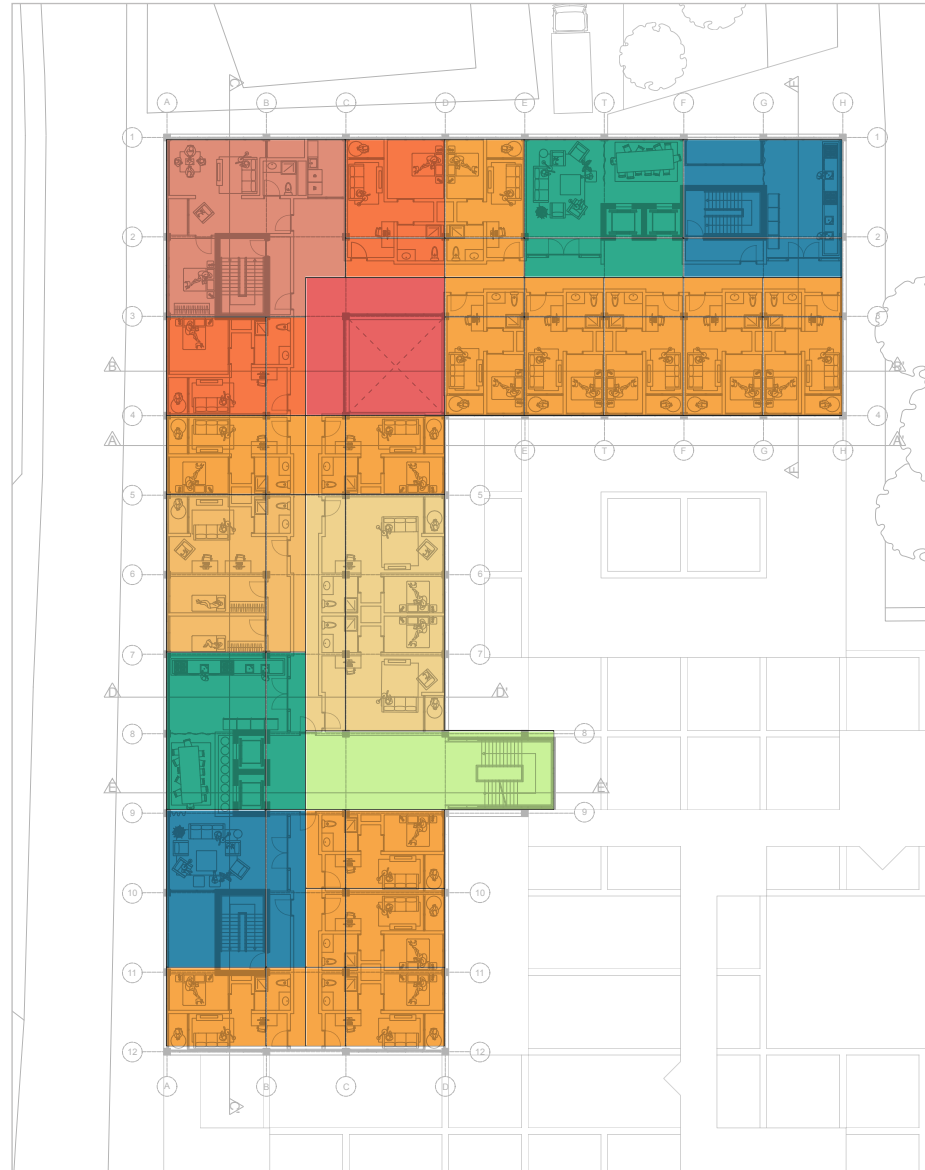
Modular Program
Corner Modules



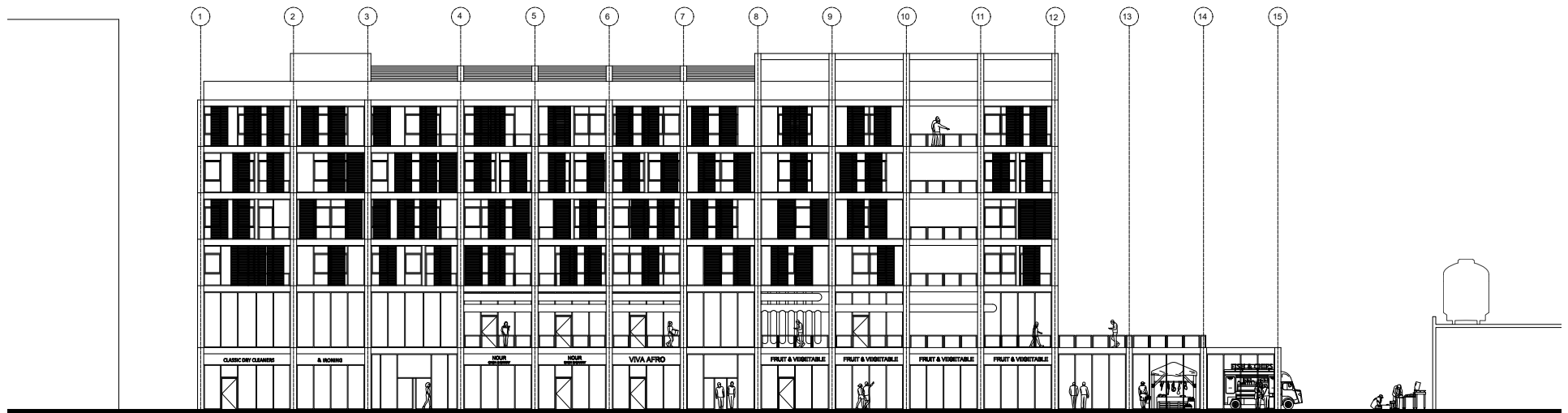
Modular Program
Circulation Modules



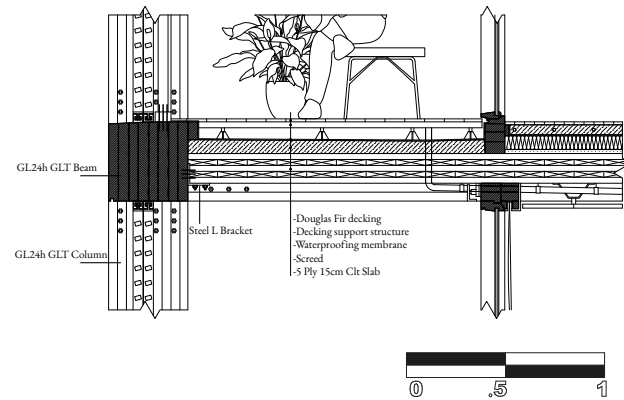
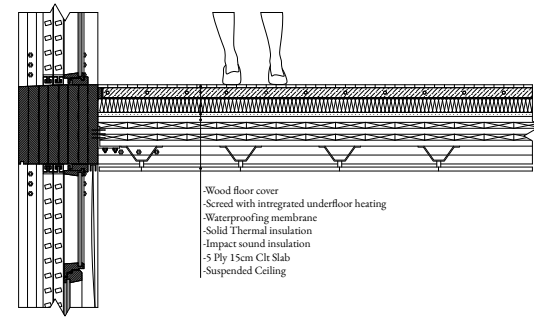
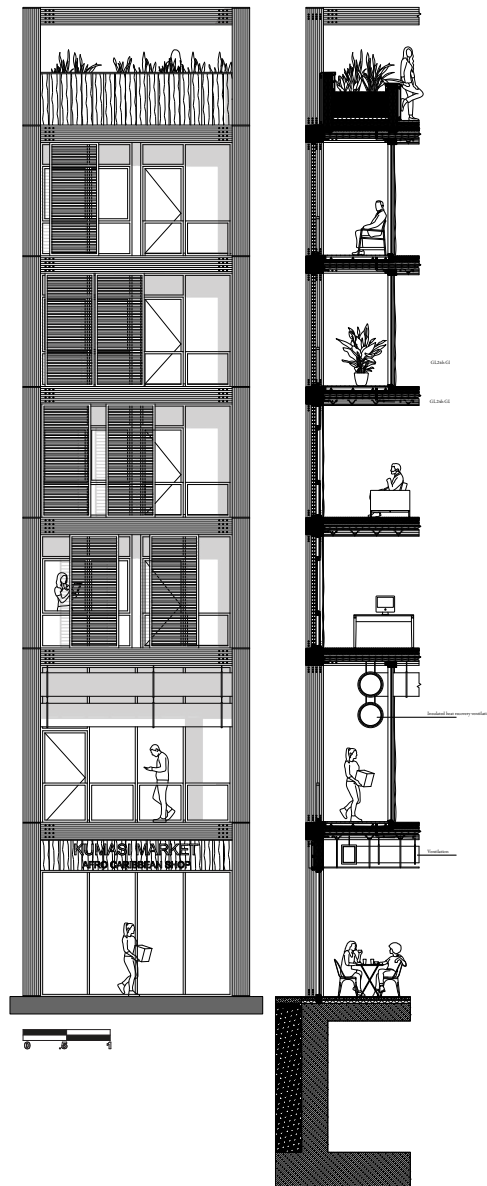
Modular Program
Floor Layout



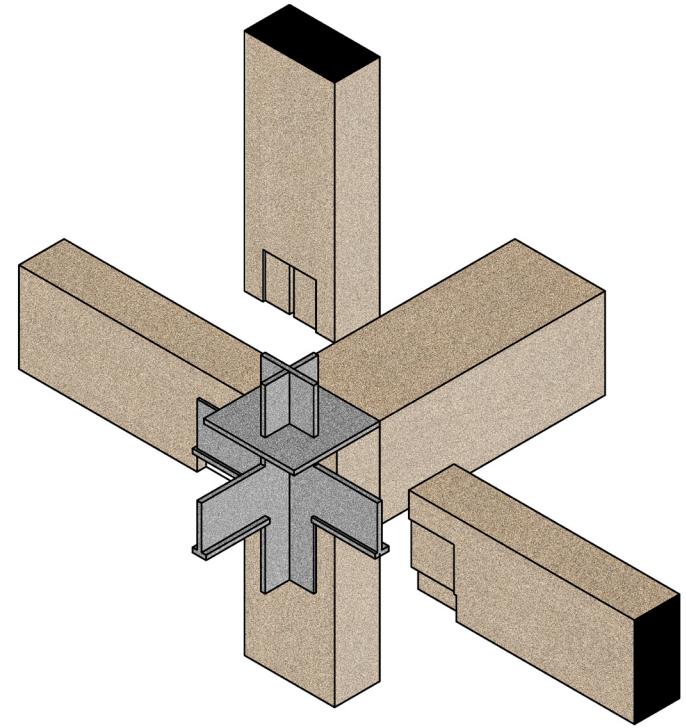
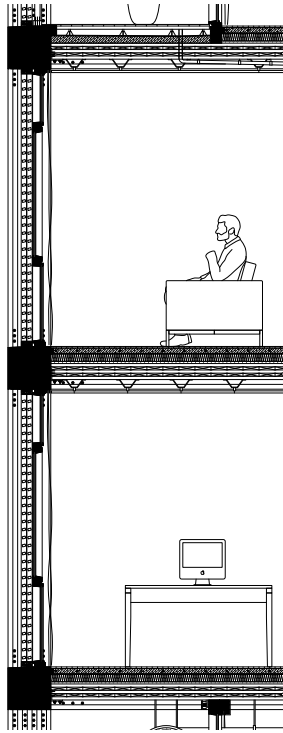
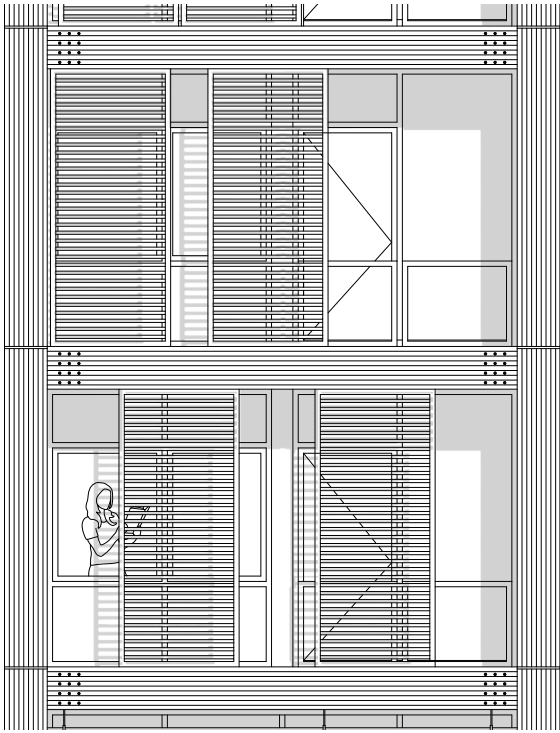
Residential Floor
Individuality



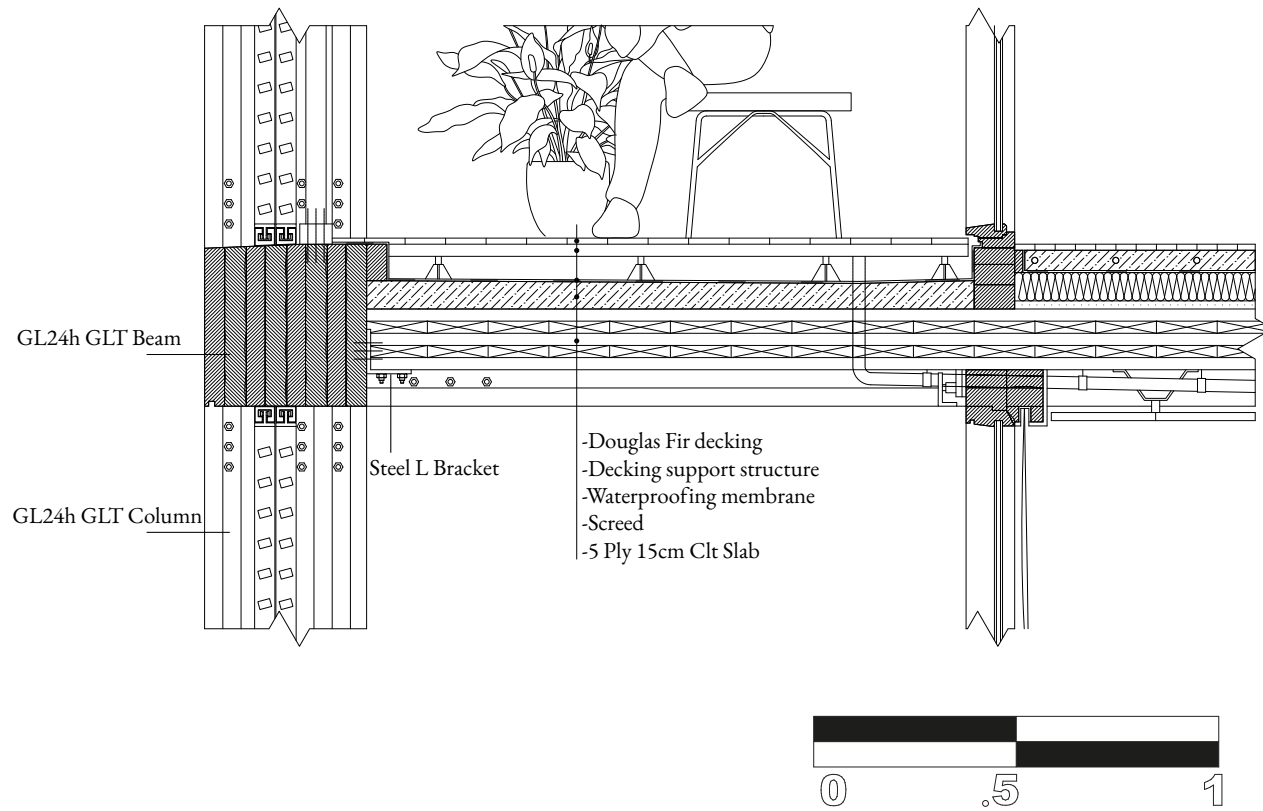
Facade Layering
Individuality



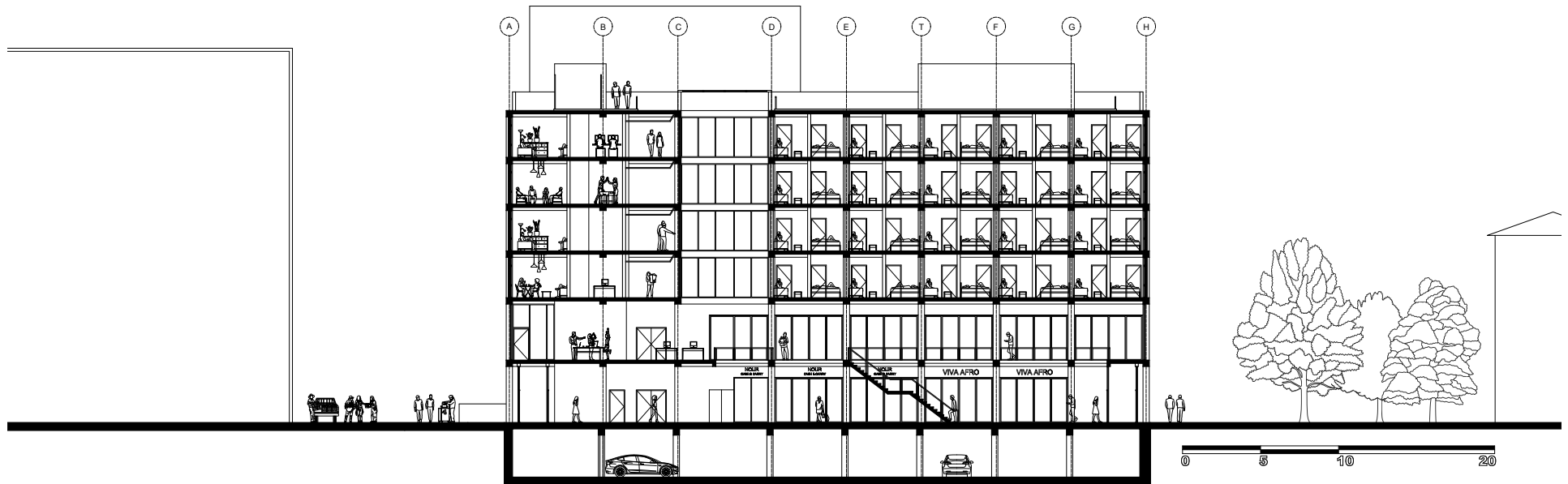
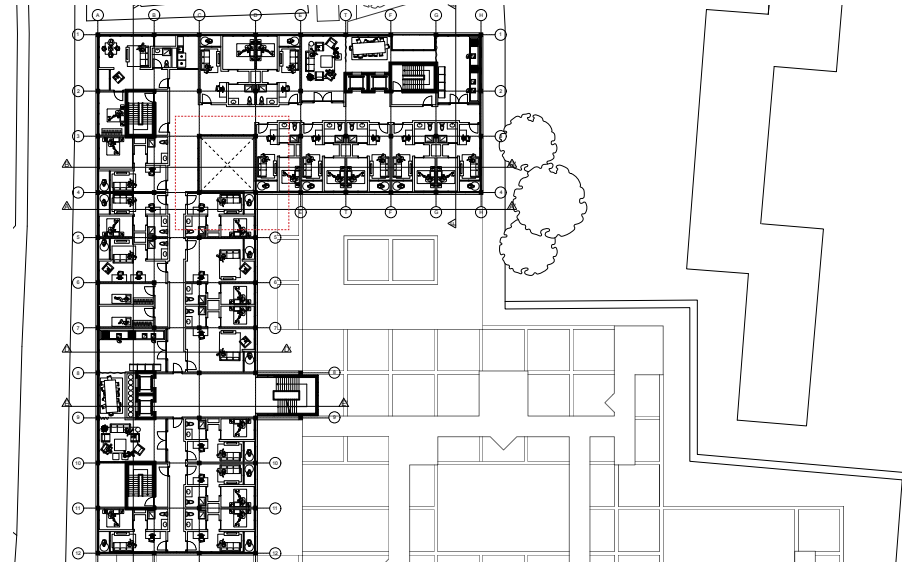
Structure
Connection



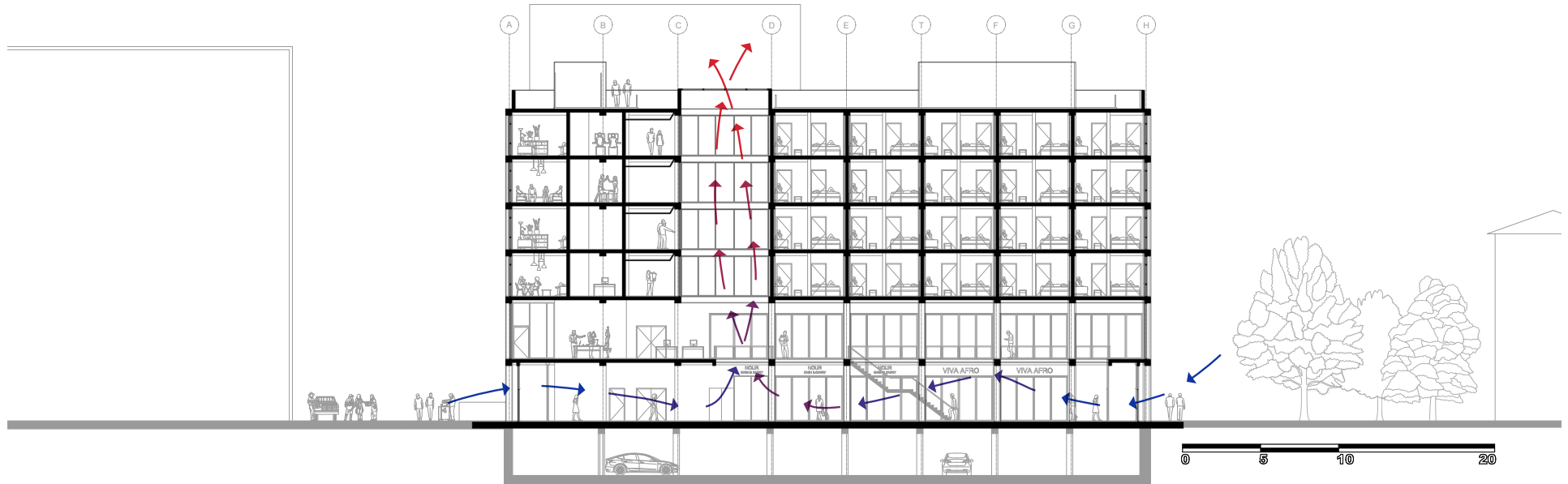
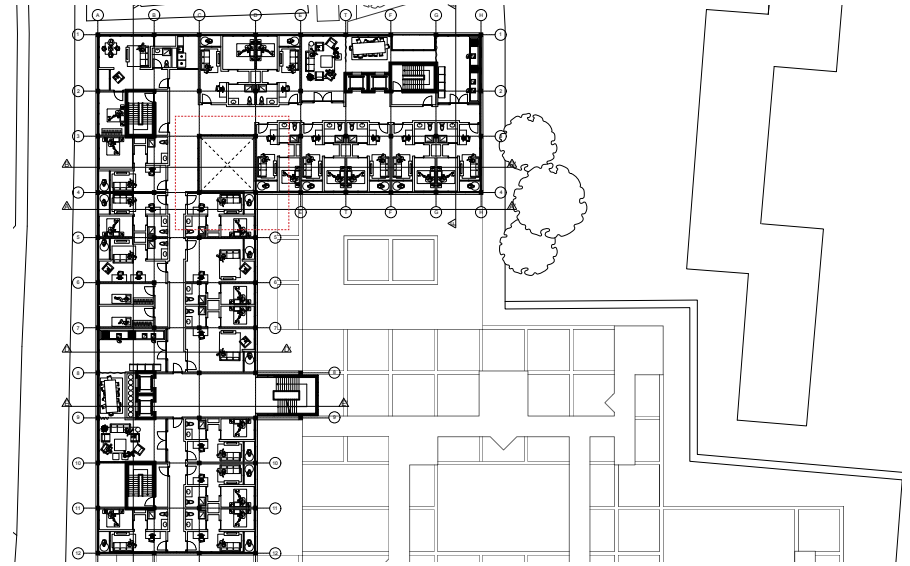
Structure
Slab connection



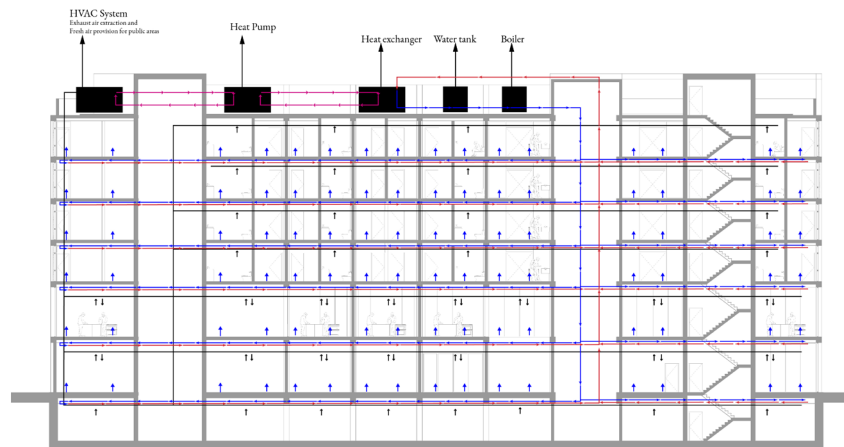
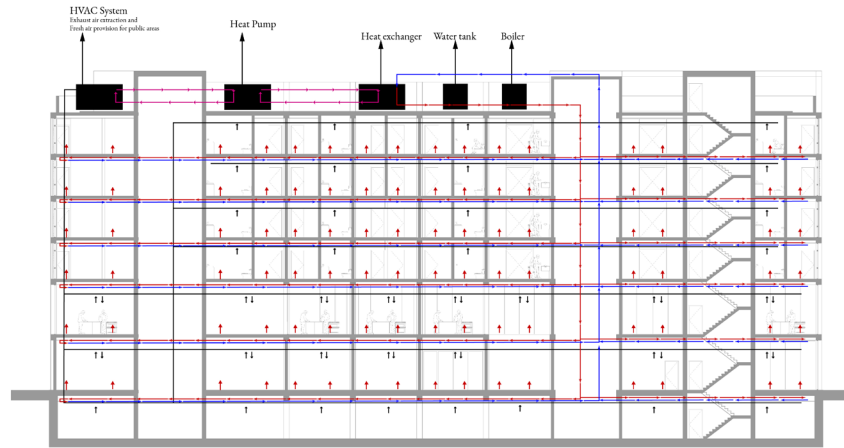
Residential Floor
Atrium



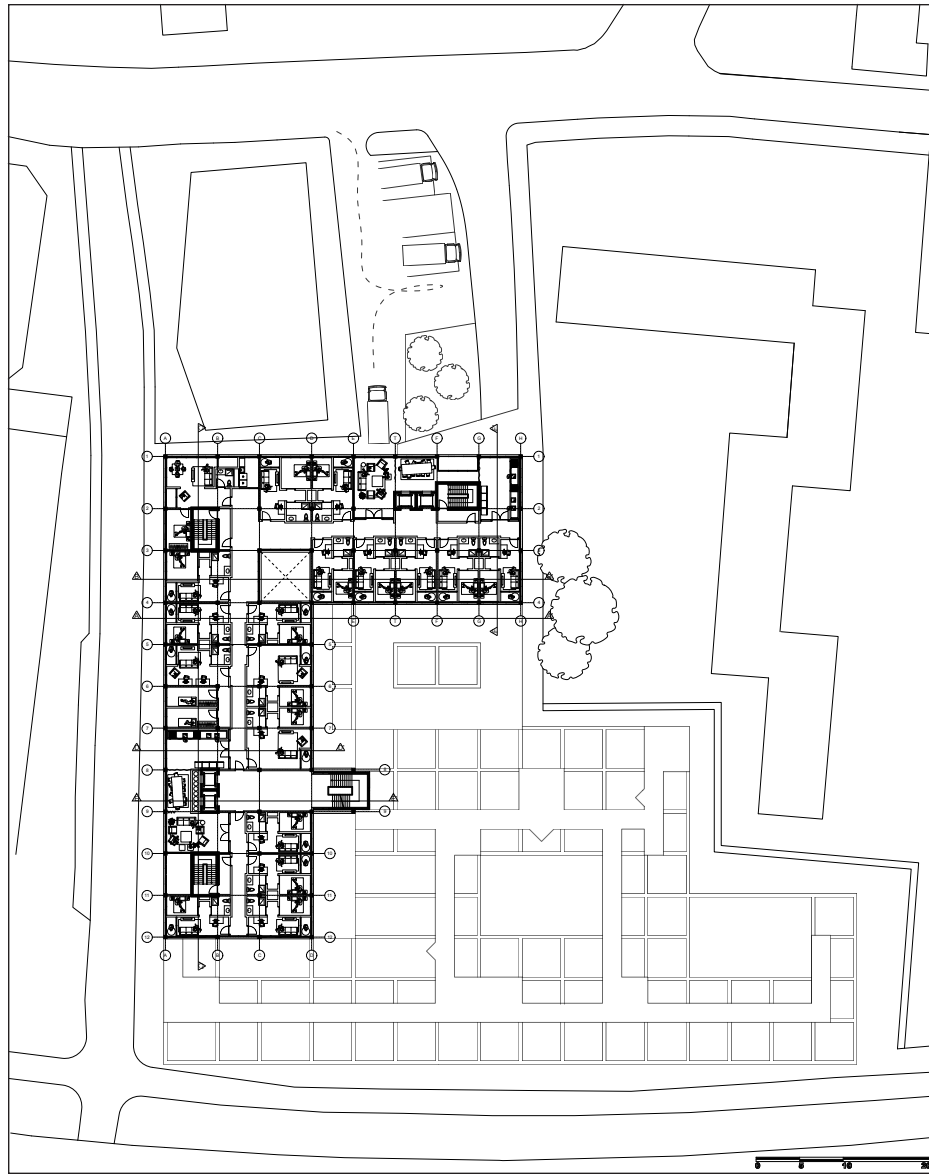
Residential Floor
Atrium-Natural Ventilation



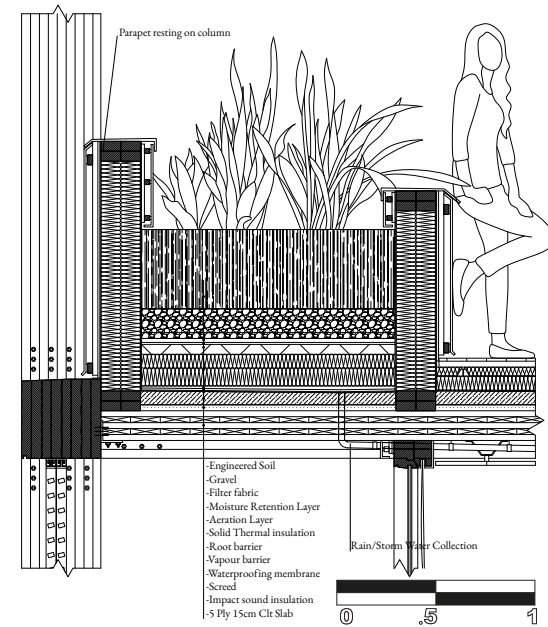
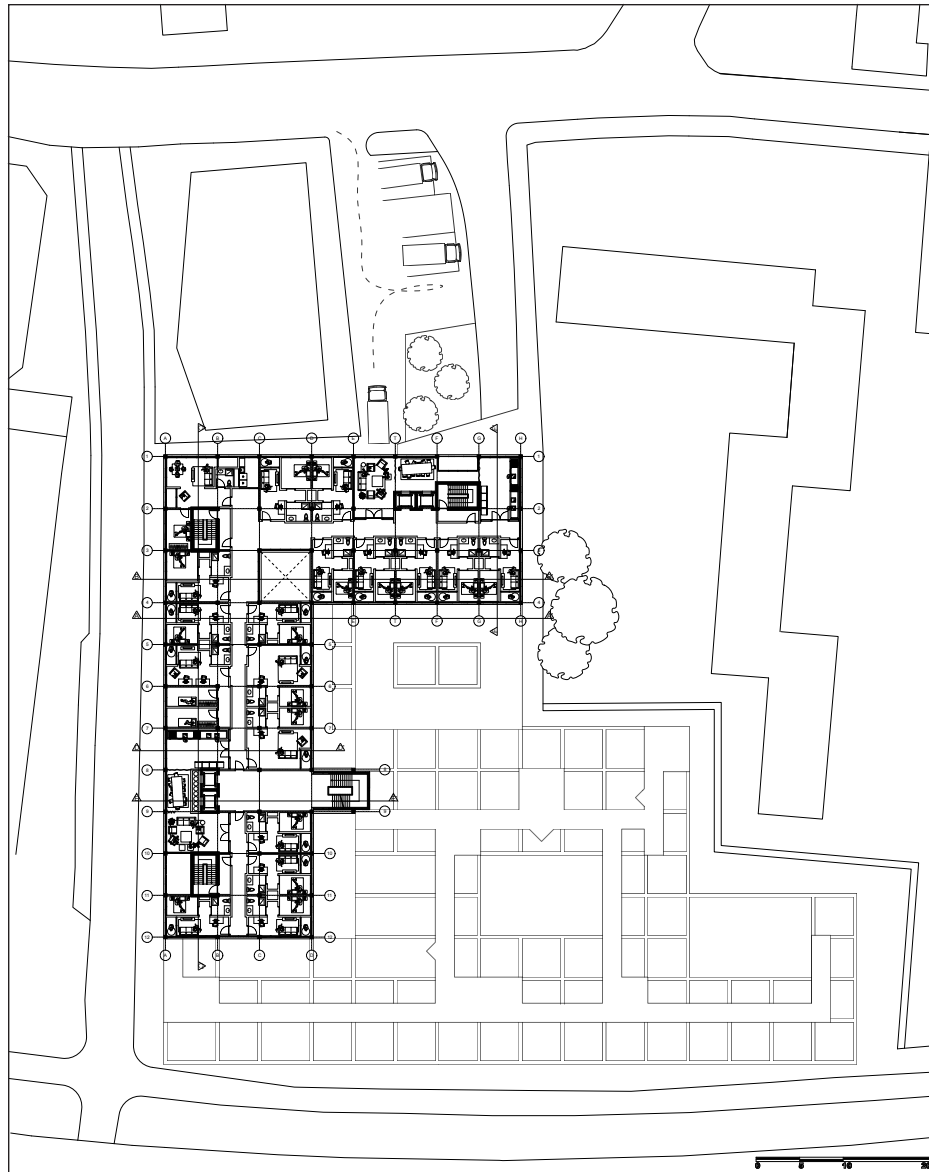
Residential Floor
Heating-Cooling



Rooftop Plan



Rooftop Plan
Perimeter Green Roof



Rooftop Plan
Perimeter Green Roof

