

Standardized indicators and the Resilient City Planner

learning from peer cities & accelerating joint decision making
and local actions

G | M | F The German Marshall Fund
of the United States

STRENGTHENING TRANSATLANTIC COOPERATION

How do we perform ? goals, actions, monitor



*Anticipate changes, how to
expect the unexpected, try to set
up an early warning system*

If you can't measure it you can't manage it!

Many city rankings, assessments, how can they help to improve our vision, policies and actions.... so we assessed them!

The Economist's World's Most Liveable Cities 2011 (Top 10)^[7]

	City	Country	Rating
1	Melbourne	Australia	97.5
2	Vienna	Austria	97.4
3	Vancouver	Canada	97.3
4	Toronto	Canada	97.2
5	Calgary	Canada	96.6
6	Sydney	Australia	96.1
7	Helsinki	Finland	96.0
8	Perth	Australia	95.9
9	Adelaide	Australia	95.9
10	Auckland	New Zealand	95.7

Mercer 2010 Quality of Living Survey^[12]

	City	Country	Rating
1	Vienna	Austria	108.6
2	Zurich	Switzerland	108
3	Geneva	Switzerland	107.9
4	Auckland	New Zealand	107.4
4	Vancouver	Canada	107.4
6	Düsseldorf	Germany	107.2
7	Frankfurt	Germany	107
7	Munich	Germany	107
9	Bern	Switzerland	106.5

Monocle's Most Livable Cities Index 2010

	City	Country	2009
1	Munich	Germany	(04)
2	Copenhagen	Denmark	(02)
3	Zurich	Switzerland	(01)
4	Tokyo	Japan	(03)
5	Helsinki	Finland	(05)
6	Stockholm	Sweden	(06)
7	Paris	France	(08)
8	Vienna	Austria	(07)
9	Melbourne	Australia	(09)
		Spain	(12)

2008 US City Sustainability Rankings

Cities are listed by their 2008 rankings with scores in parentheses. (Based on 2008 Rankings)

1. Portland, OR (91)	18. Albuquerque, NM (86)	35. Charlotte, NC (80)
2. San Francisco, CA (88)	19. Atlanta, GA (86)	36. Houston, TX (80)
3. Seattle, WA (87)	20. Kansas City, MO (85)	37. Denver, CO (80)
4. Chicago, IL (86)	21. San Jose, CA (85)	38. El Paso, TX (80)
5. New York, NY (86)	22. Boston, AZ (85)	39. San Diego, CA (80)
6. Boston, MA (85)	23. Jacksonville, FL (85)	40. Nashville, TN (80)
7. Minneapolis, MN (85)	24. Dallas, TX (85)	41. Raleigh, TX (80)
8. Philadelphia, PA (85)	25. Omaha, NE (85)	42. Long Beach, CA (80)
9. Denver, CO (85)	26. San Diego, CA (85)	43. Colorado Springs, CO (80)
10. Baltimore, MD (85)	27. New Orleans, LA (85)	44. Indianapolis, IN (80)
11. Denver, CO (84)	28. San Antonio, TX (85)	45. Virginia Beach, VA (80)
12. Milwaukee, WI (84)	29. Louisville, KY (85)	46. Memphis, TN (80)
13. Austin, TX (84)	30. Columbus, OH (85)	47. San Diego, CA (80)
14. Sacramento, CA (84)	31. Detroit, MI (85)	48. Tulsa, OK (80)
15. Washington, DC (84)	32. Phoenix, AZ (85)	49. Salt Lake City, UT (80)
16. Cleveland, OH (84)	33. San Antonio, TX (85)	50. Oklahoma City, OK (80)
17. Portland, ME (84)	34. Miami, FL (85)	51. Mesa, AZ (80)

Smarter Cities

Rankings: Overall, Local, Global (2008-2009)

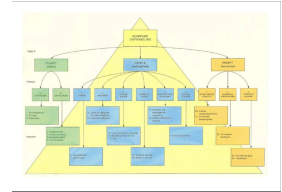
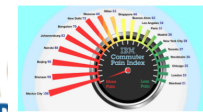
City: [Search]

Rankings: Overall, Local, Global (2008-2009)

City: [Search]

Rankings: Overall, Local, Global (2008-2009)

City: [Search]

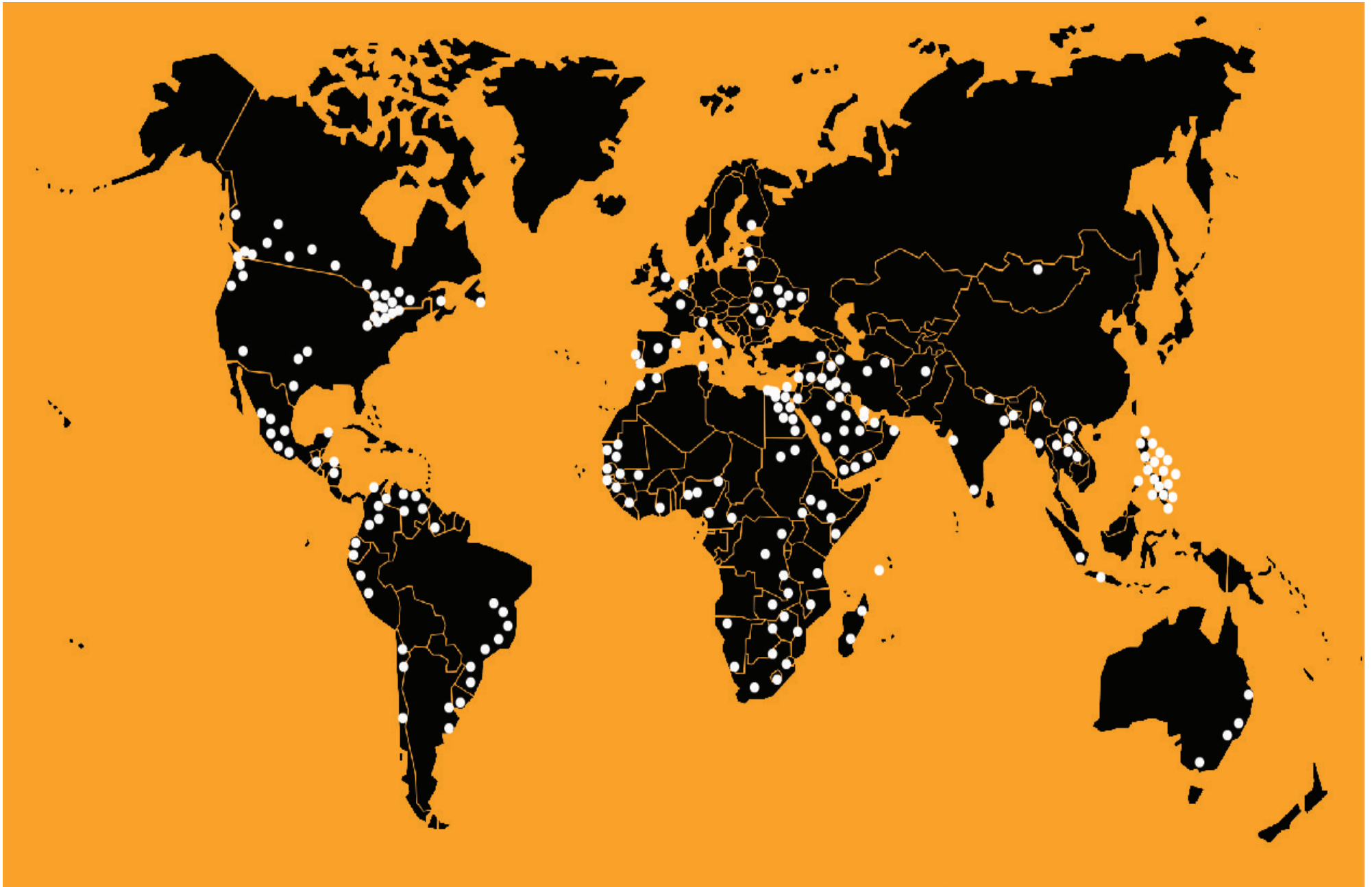


Notions for improvement to be used in our city

- Standardize indicators now apples and pears
- Indicator evolution policy feedback
- Weighing is a black box
- Results in numbers and %, no maps
- Use of local potentials (renewables)
- Flexibility, adaptation capacity
- Governance
- no footprint, indirect impacts elsewhere

*The **Global Cities Indicators Facility (GCIF)** gave the opportunity to choose peer cities and feedback*

GCIF and its global reach – 260 cities worldwide and growing.....+ 330 cities in China



NOW IN ISO PROCEDURE AS THERE IS A NEED FOR STANDARDIZED CITY INDICATORS (RESILIENCE = SUST. STILL TO BE WORKED OUT WITH MEMBERS)

Cities and standardized indicators:

- More effective governments and delivery of services
- International benchmarks and targets
- Informed decision making for policy makers
- Local benchmarking and planning
- Learning across cities
- Leverage for funding and membership status in international entities
- Leverage for funding by cities with senior levels of government
- Framework for sustainability planning
- **Policy snapshots** and relation to businesses etc.

PM10 Concentration

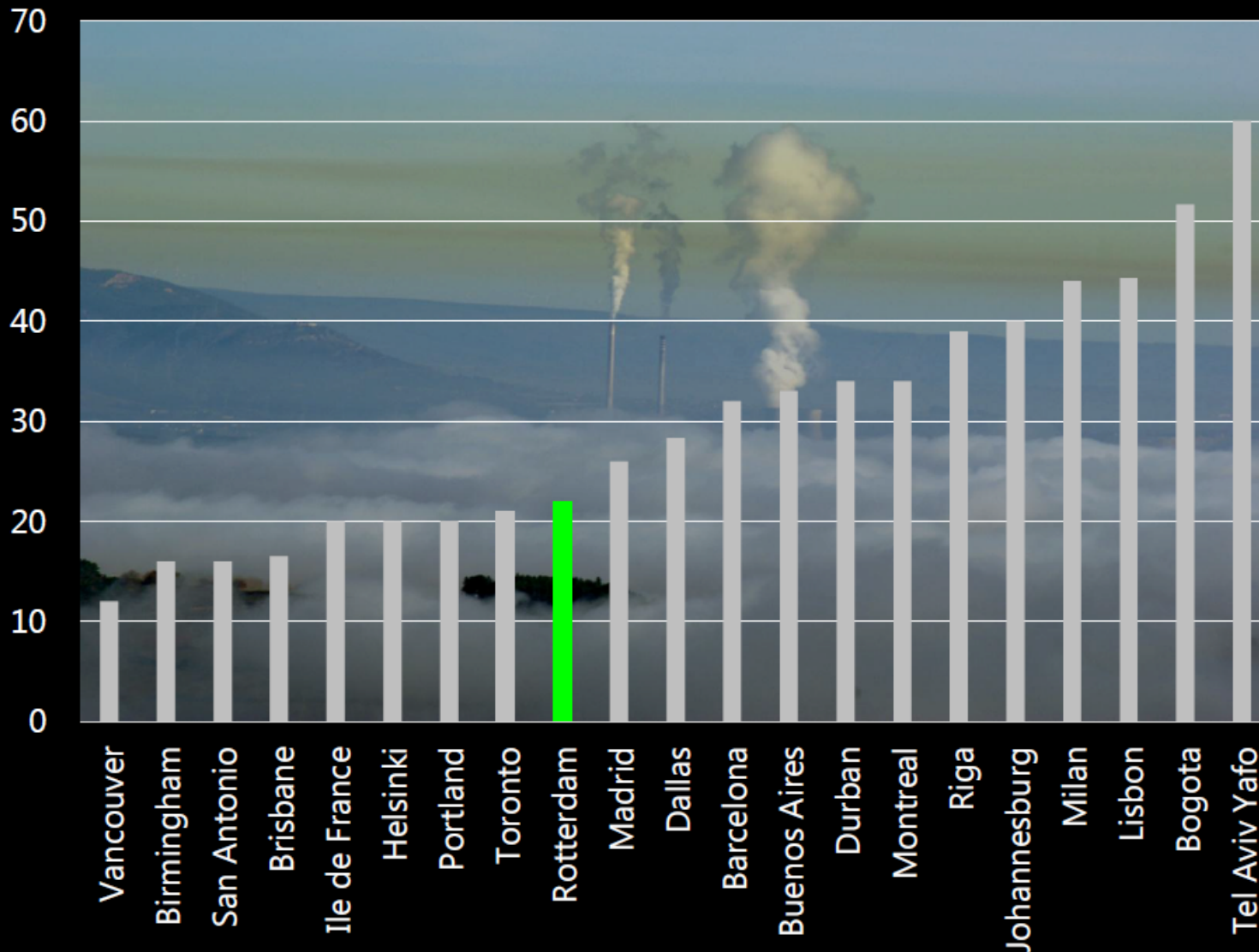


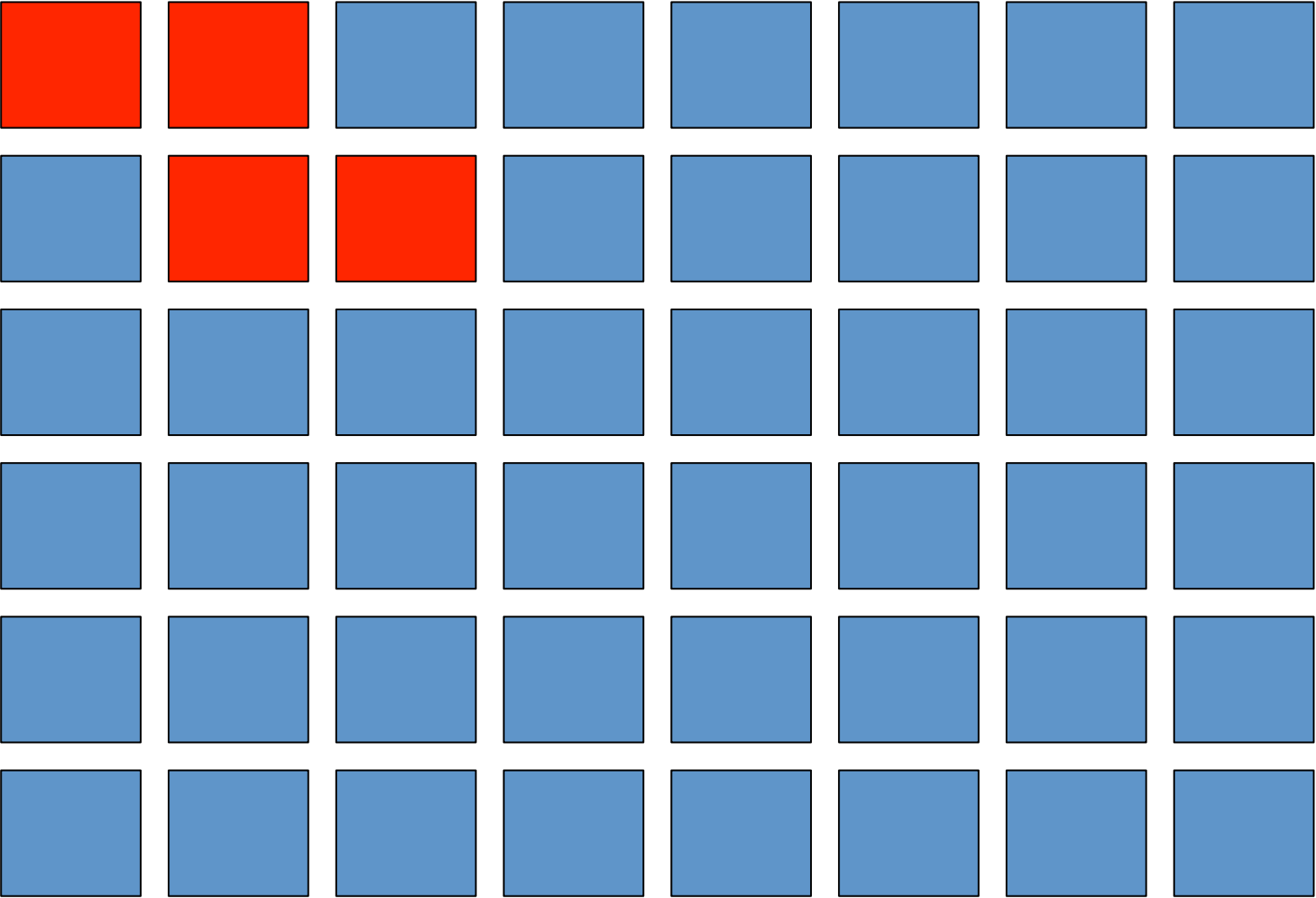
Photo Source: David Perez, 2012, Wikimedia Commons

Not 1 number but standerdized data in a local
scalable GIS transition approach

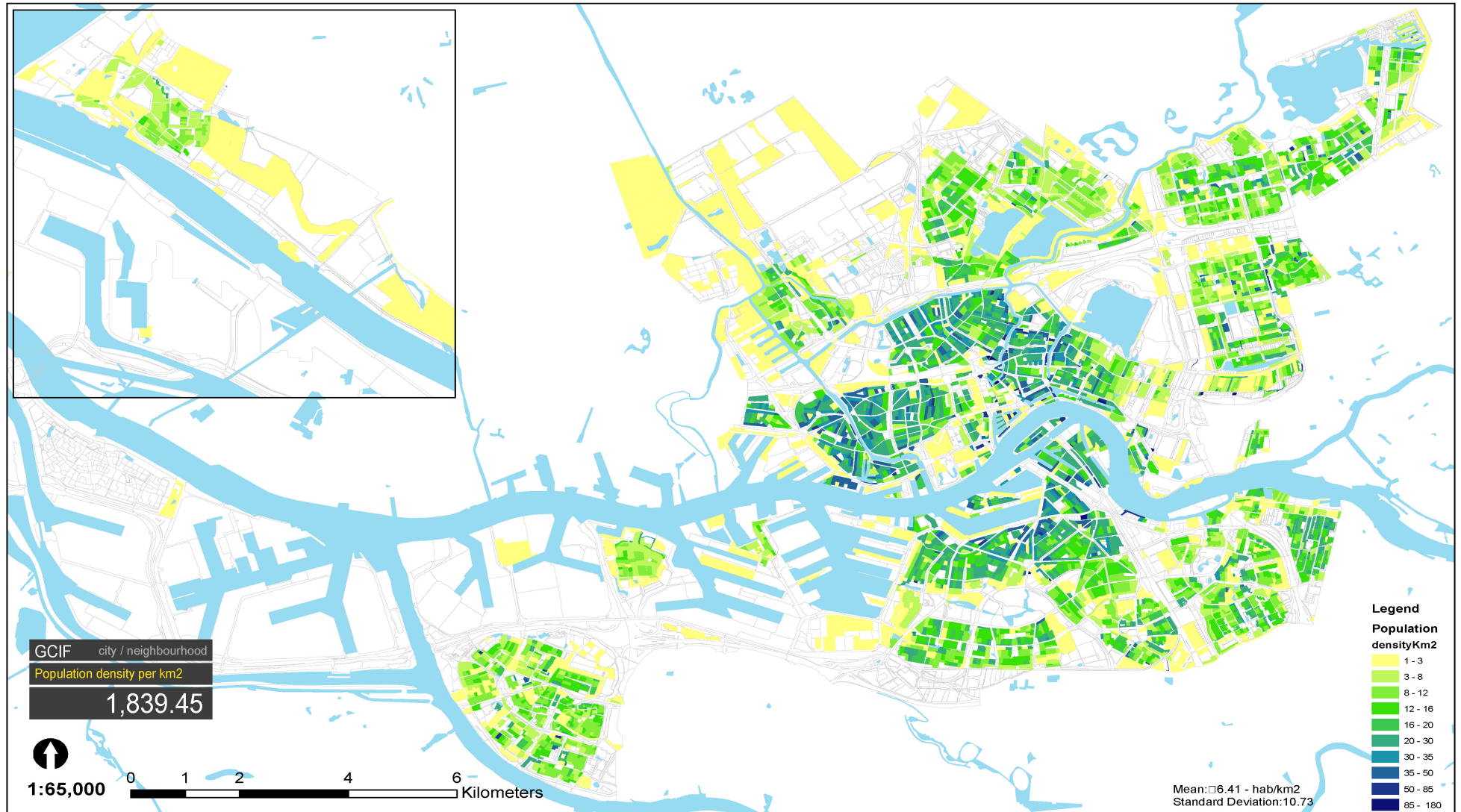


6,3

Detailed data at all scales to facilitate fast and flexible



A map is easier to read than dozens of excell sheets

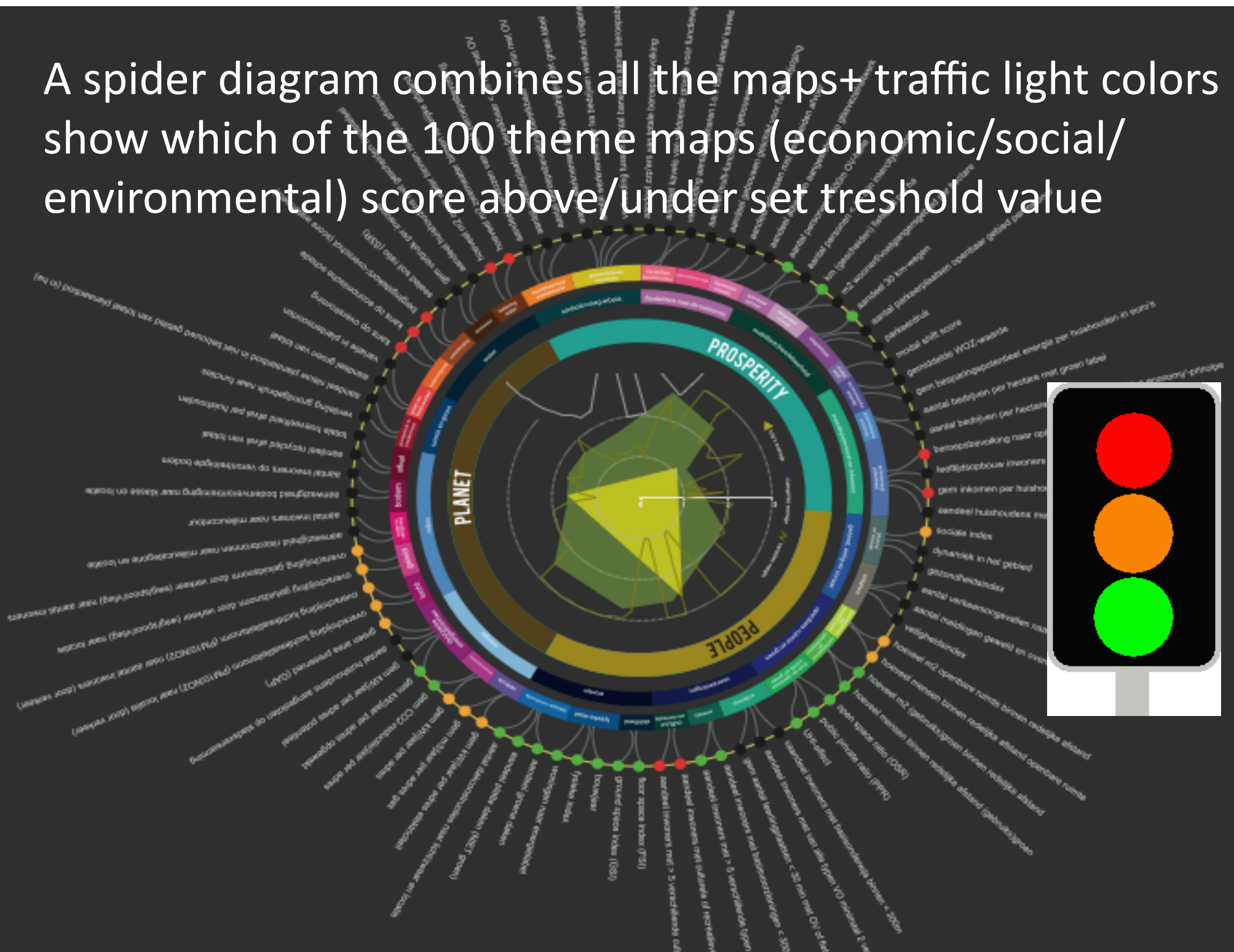


GCIF Indicators

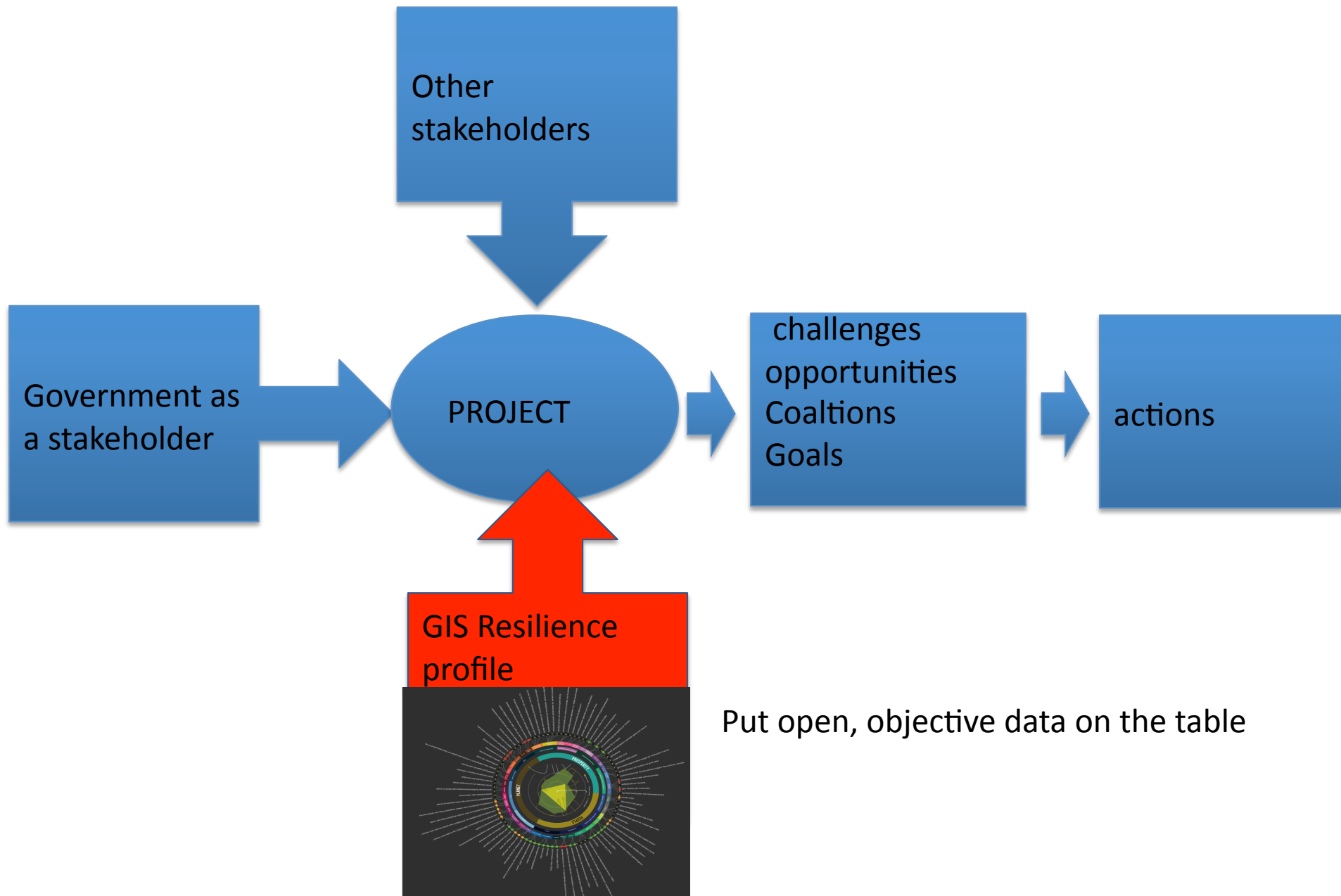
Urban Planning, Shelter and Environmen - Population density per Km2

Gemeente Rotterdam
dS+V, afd. Ruimtelijke Ordening
trainee: Raed Gindeya M.

A spider diagram combines all the maps+ traffic light colors show which of the 100 theme maps (economic/social/environmental) score above/under set treshhold value



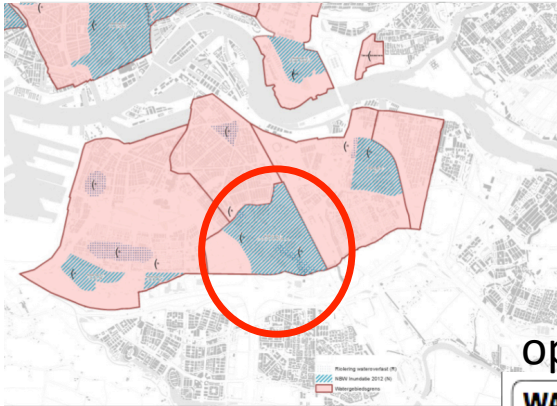
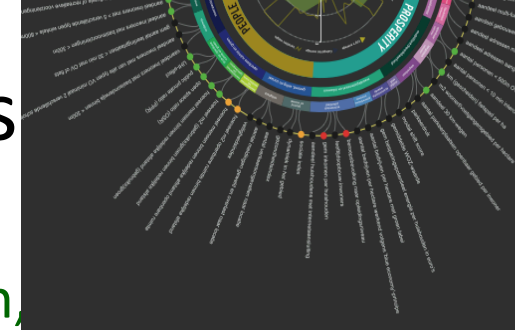
Facilitate the transition process



Result: Stakeholder chosen themes

Waterproblems, recreation shortage

Possible solution : what have other cities done? watergarden,



oplossing

WATERPLEIN
Regenwater opvangen tijdens hevige regenbuien vermindert de druk op het riool. Het water komt na de regenbui weer langzaam vrij.



Group topic **Environment** map code **En1 - L**

Monitorin aim
Water for recreational uses.

Core variables / measurement
Water bodies for recreational use in 500m walking range from households

Threshold
Walking distance of max 250m² from a household, and with an area of average 1500m²

0m - 65m - score 1
65m - 125m - score 2
125m - 180m - score 3
180m - 250m - score 4
> 250m - score 5

Legend
Lombardijen water scores ranges 1 to 5

- 1 - optimal
- 2
- 3
- 4
- 5 - sufficient

Watersquare finished in nov 2012



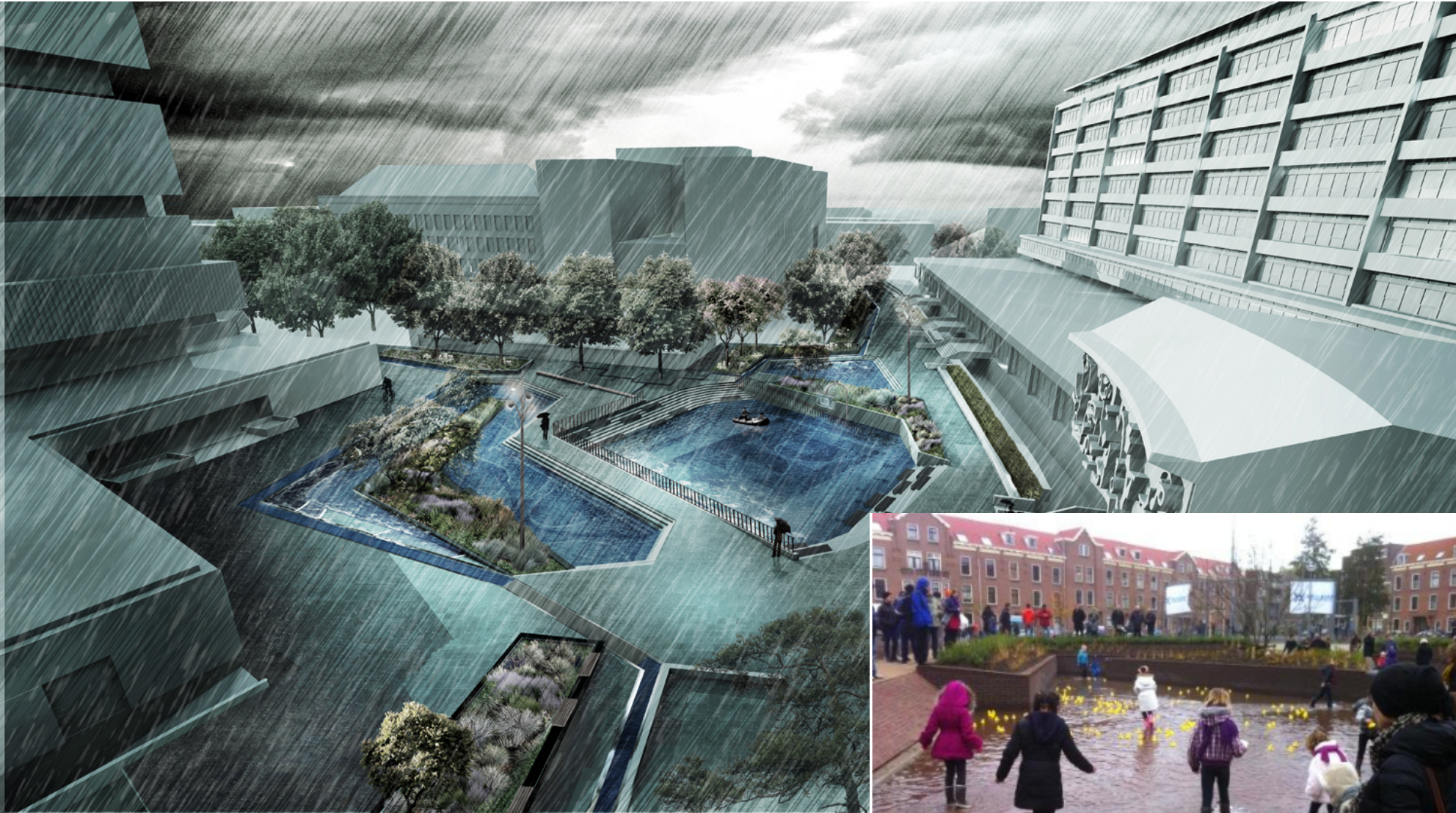
Study from the 'De urbanisten' Rotterdam

Watersquare finished in nov 2012



Nico Tillie – German Marshall Fund TCN meeting, Charlotte NC USA, 23rd of September 2013

Watersquare finished in nov 2012



Follow up in Rotterdam

We see this as an ongoing process, learning from other cities, new insights make it very useful for us.

local data use **local** political goals for thresholds.... like to compare with other cities..so use standards framework

New indicators which show potentials (ecosystem services, energy potentials etc)

Localise sustainability and resilience indicators and use them in transition process!!

Project Proposal

- **Case study with a few cities (1 or 2 US and 1 or 2 European) , Join up with ESRI, GCIF, ISO other organizations, see if we can use this and scale it up, make it work and apply for money**