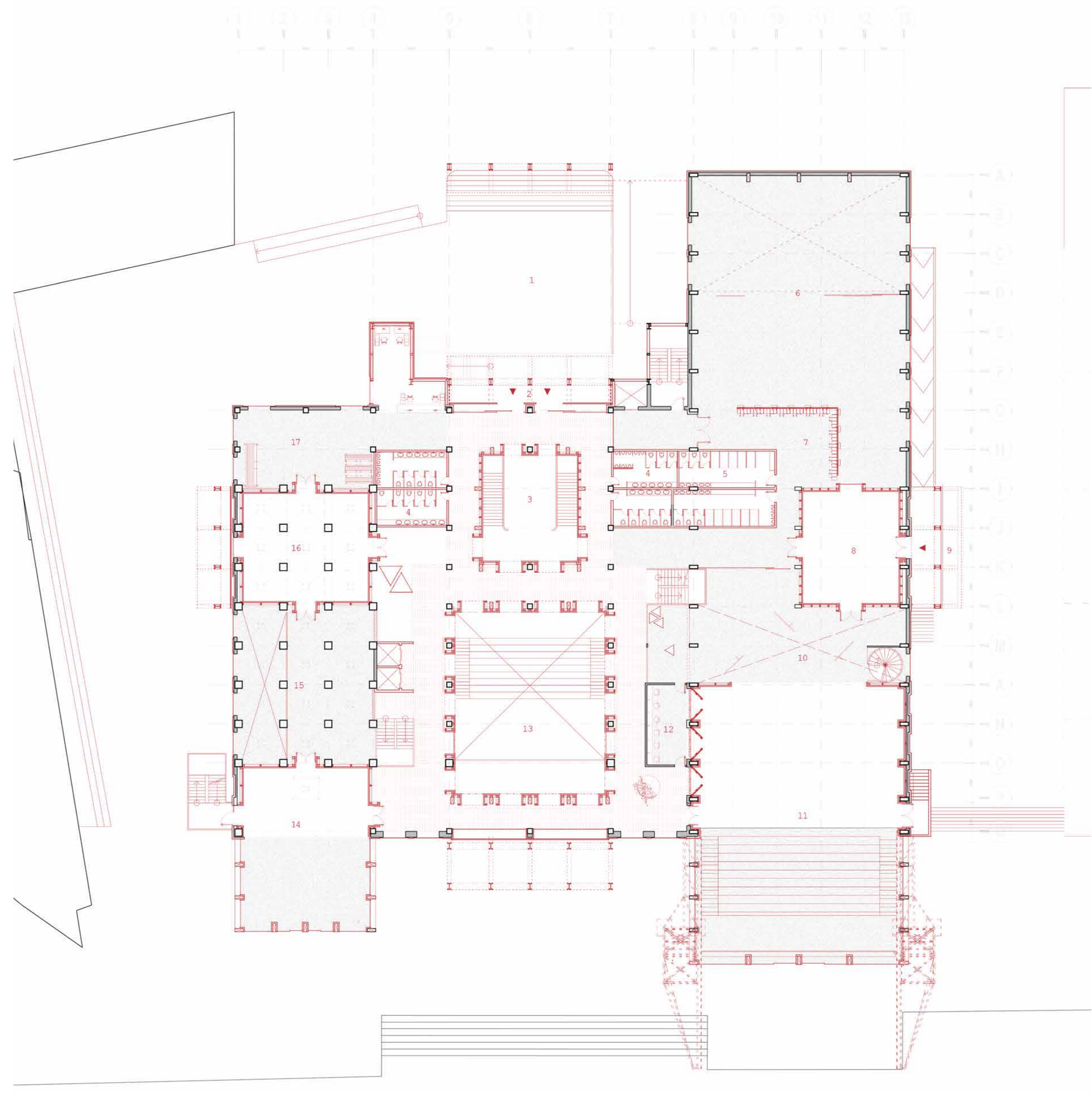


Lower ground level

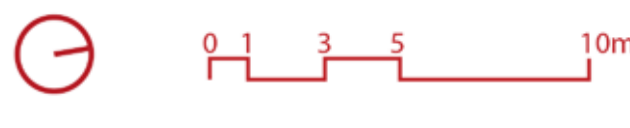
- Legend
- 1. Lower entrance
 - 2. Fire escape
 - 3. Information desk
 - 4. Lower stage vestibule
 - 5. Toilets
 - 6. Kitchen
 - 7. Canteen
 - 8. South Entrance
 - 9. Coworking spaces
 - 10. Cafe / Bar
 - 11. Main hall / stage space
 - 12. East entrance
 - 13. LBB nightclub
 - 14. Backstage appropriate
 - 15. Admin
 - 16. Sunken court
 - New addition

The fourth wall of stage : Landbouwelang, Maastricht

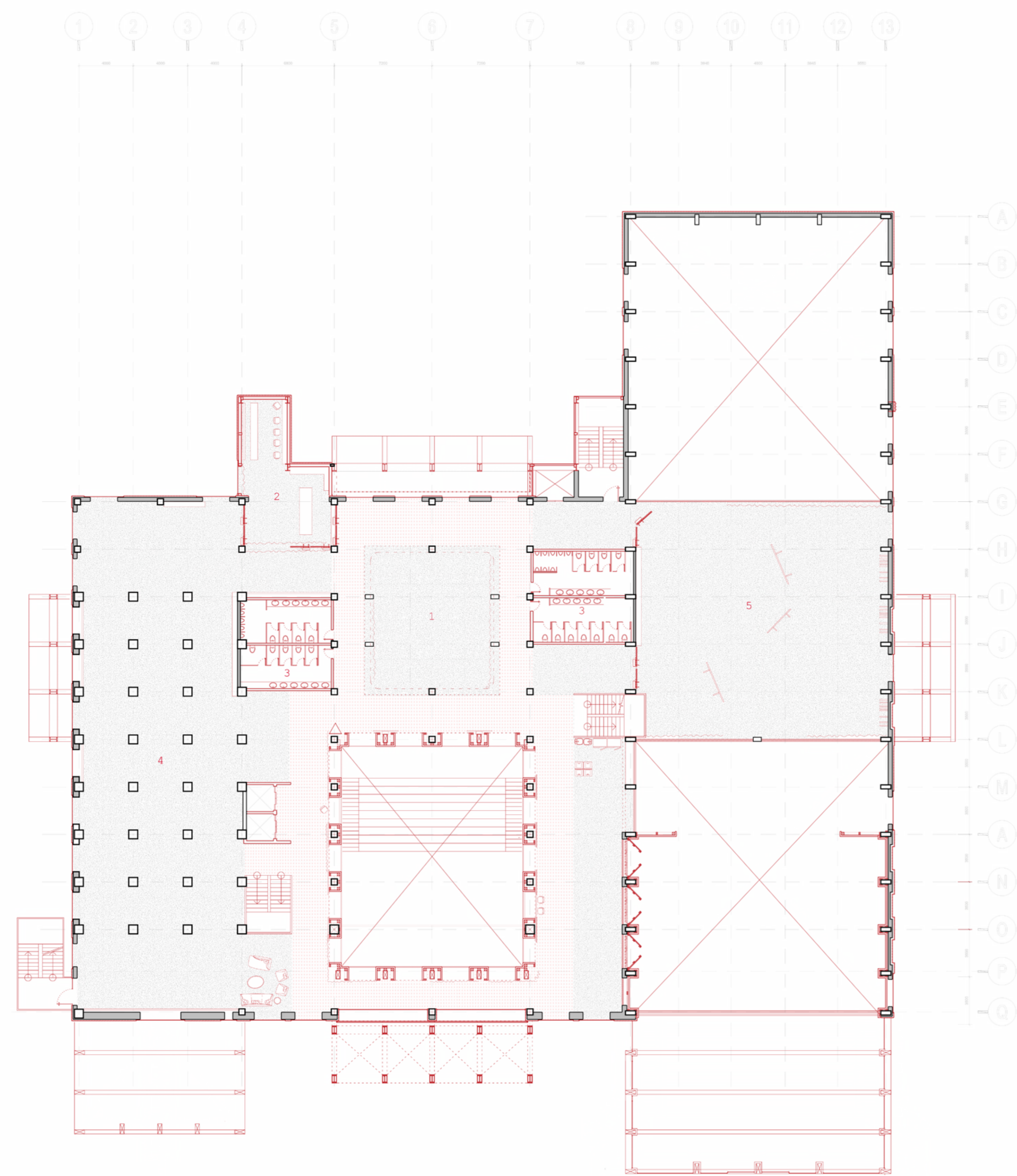


First level

- Legend
- 1. Sunken court
 - 2. Main west entrance
 - 3. Entrance vestibule stage
 - 4. Toilet
 - 5. Toilets & changing rooms
 - 6. Performance art rehearsal space
 - 7. Lockers
 - 8. North theatre stage vestibule
 - 9. North entrance
 - 10. Theatre backstage
 - 11. Theatre
 - 12. Green room
 - 13. Atrium
 - 14. Exhibition/Gallery stage space
 - 15. Exhibition backstage extension
 - 16. Exhibition Stage vestibule
 - 17. Exhibition backstage
 - New addition

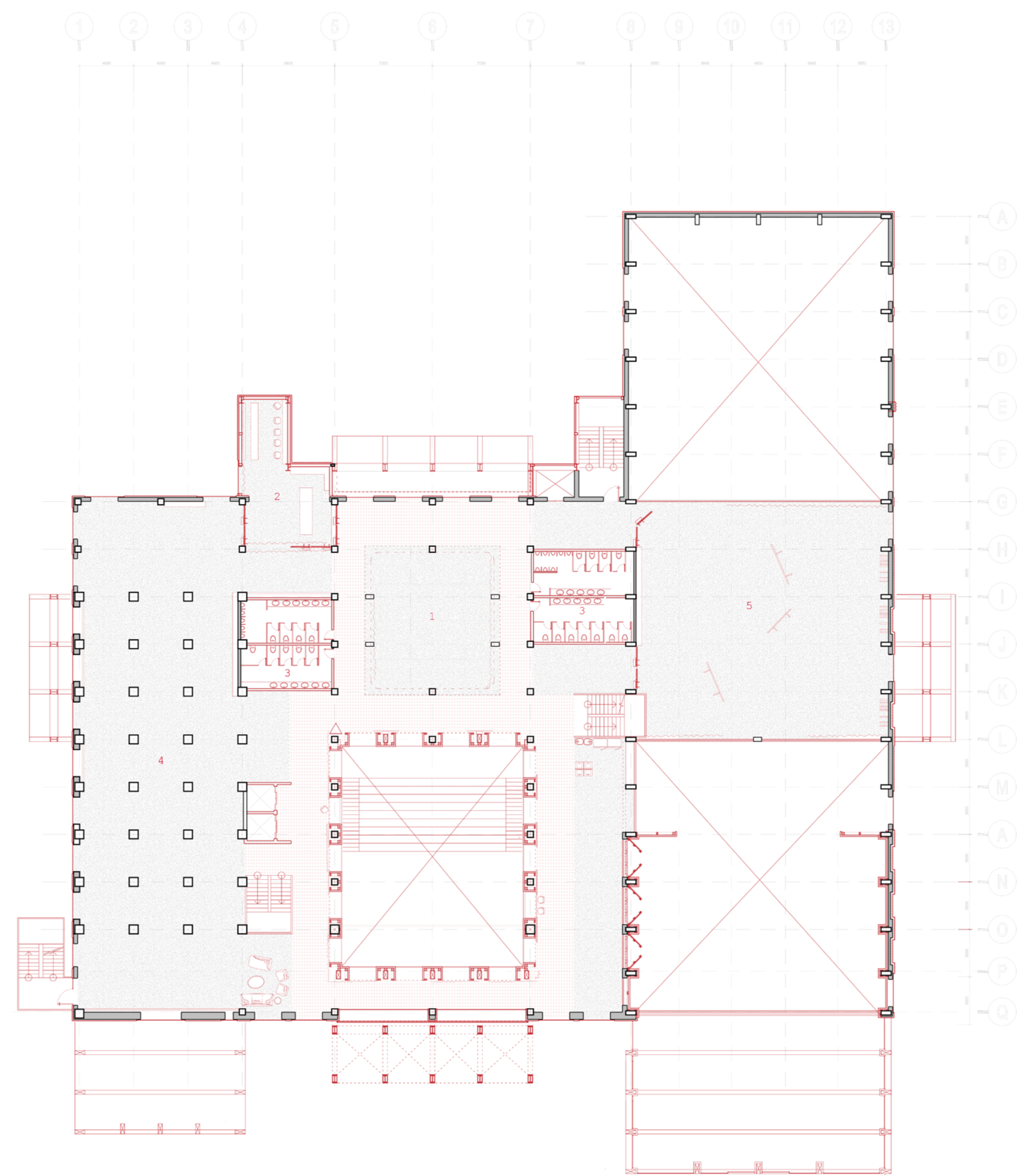


Mec 3/4 Urban Architecture studio
Vineet Dhali



Second level

- Legend
- 1. Mixed media backstage space
 - 2. Enclosed appropriable space
 - 3. Toilets
 - 4. Large visual arts production space
 - 5. Performance art production space
 - New addition



Third level

- Legend
- 1. Mixed media backstage space
 - 2. Enclosed appropriable space
 - 3. Toilets
 - 4. Large visual arts production space
 - 5. Performance art production space
 - New addition

