



into the climate  
*typology booklet*

content

---

*large house:*

*16 renting rooms for workers*

*big house:*

*two family houses*

*medium house 1:*

*one family house, three worker flats*

*medium house 2: t*

*hree worker flats, one family house*

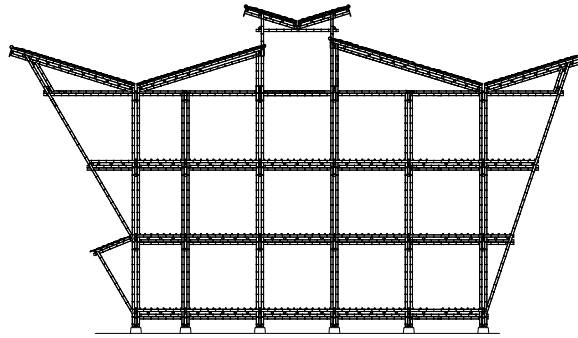
*small house:*

*five worker flats*

*tiny house:*

*three worker flats*





large house: 16 renting rooms for workers

---

*plot: 19m x 14m      3 floors*

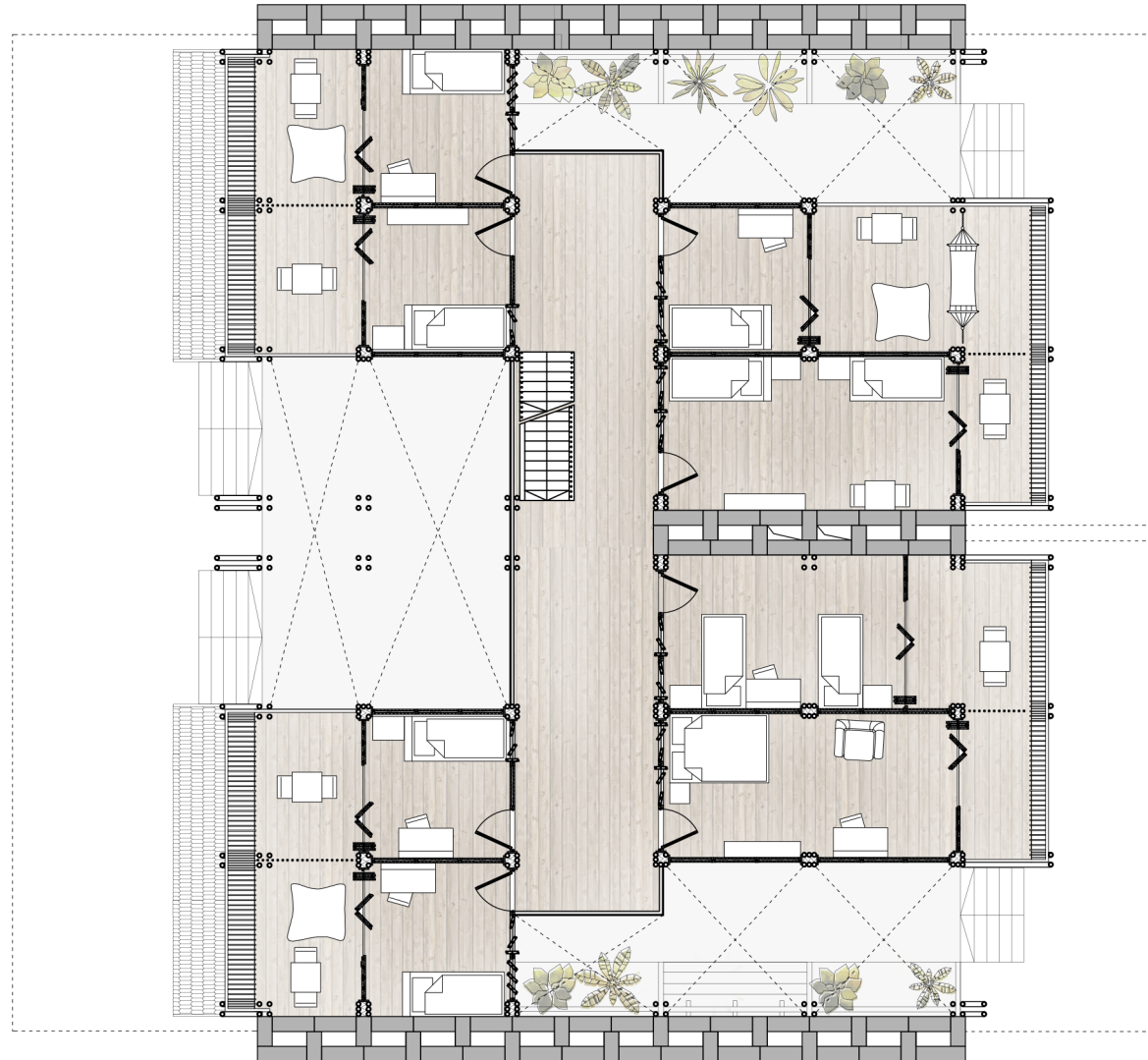
16 renting rooms for workers  
*ground floor*



scale 1:150



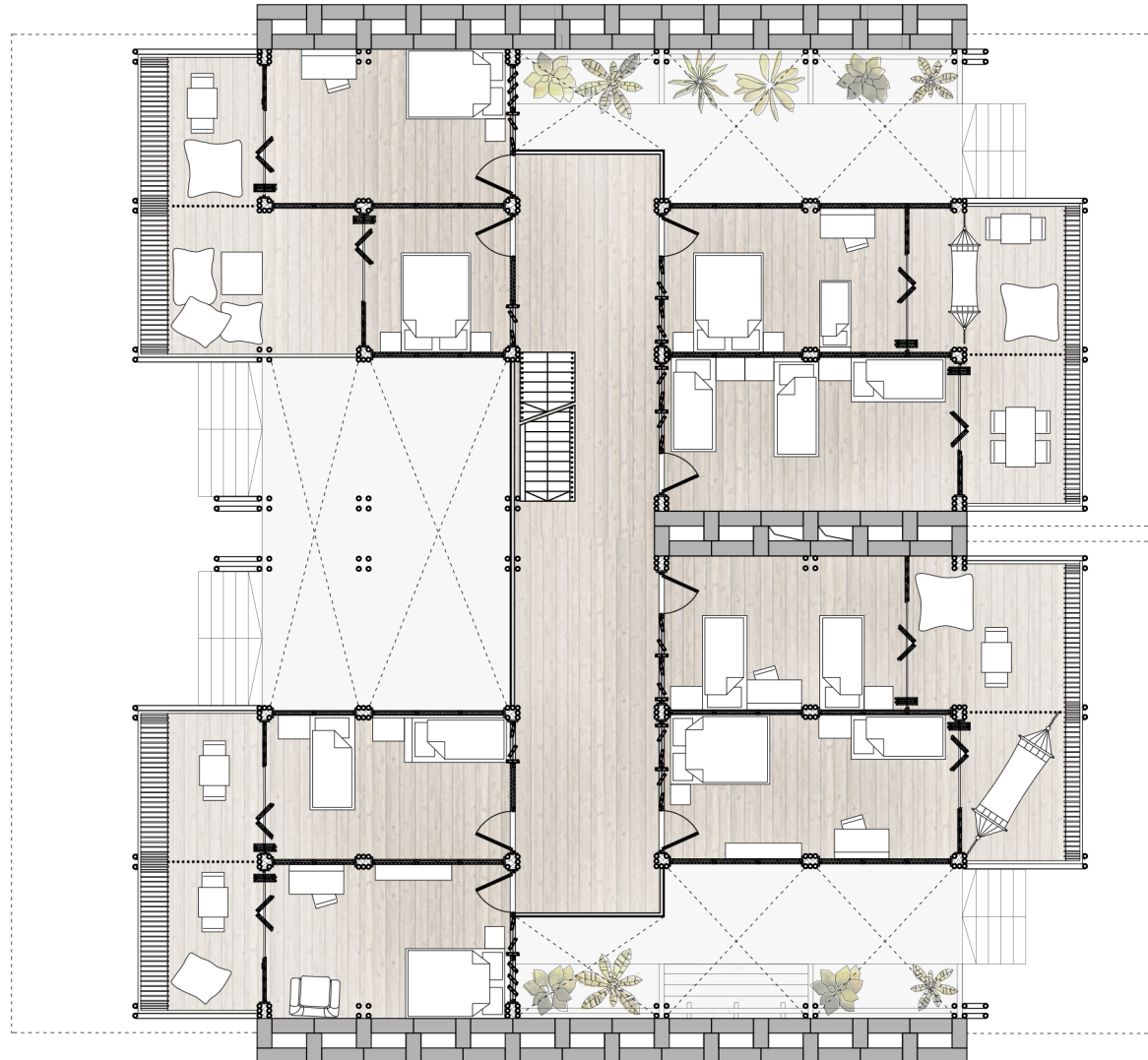
16 renting rooms for workers  
*first floor*



scale 1:150

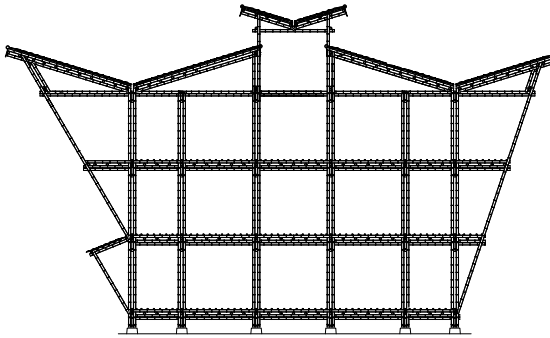


16 renting rooms for workers  
*second floor*



scale 1:150



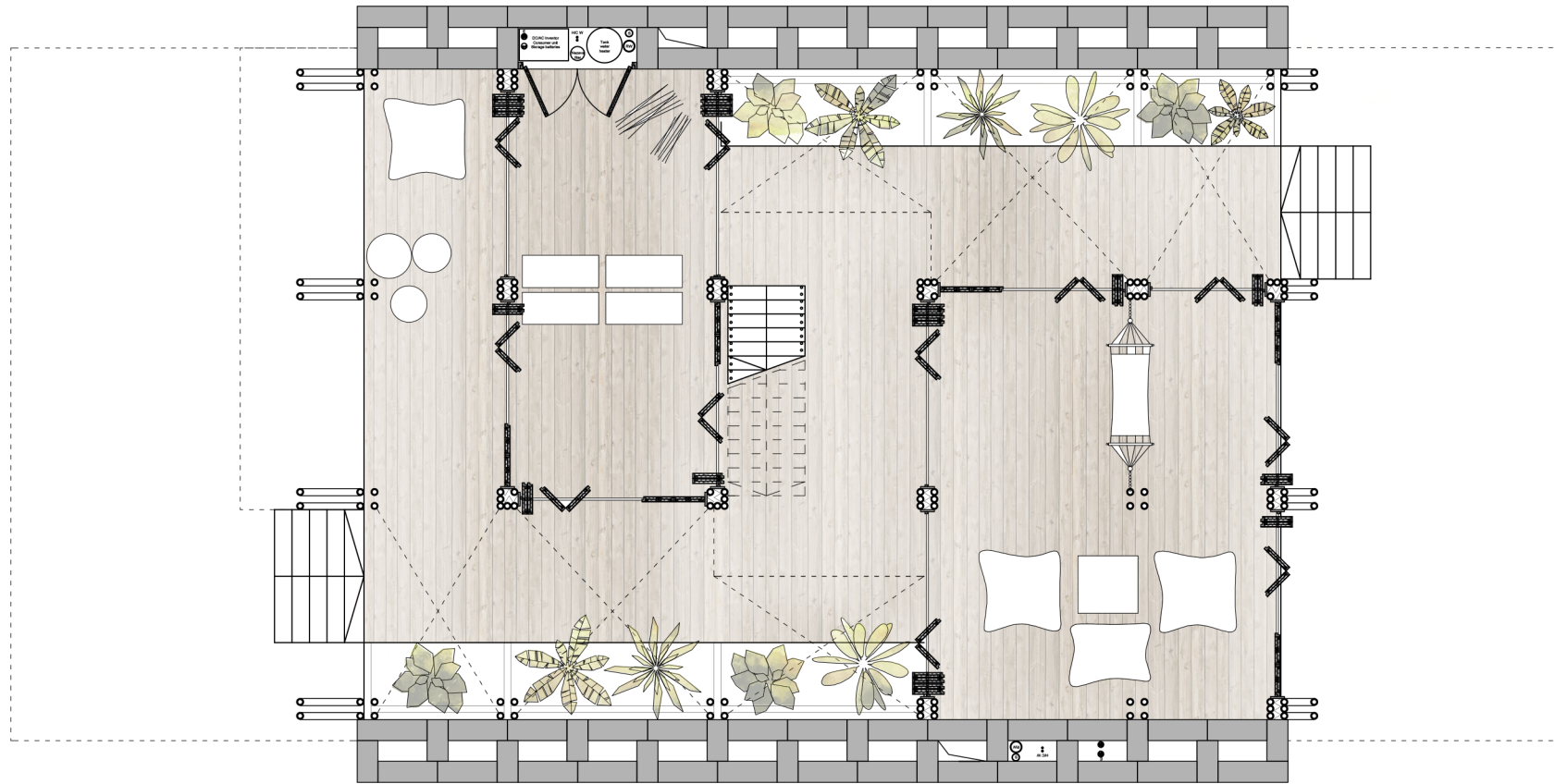


big house: two family houses

---

*plot: 9m x 13m*      *3 floors*

two family houses  
*ground floor*

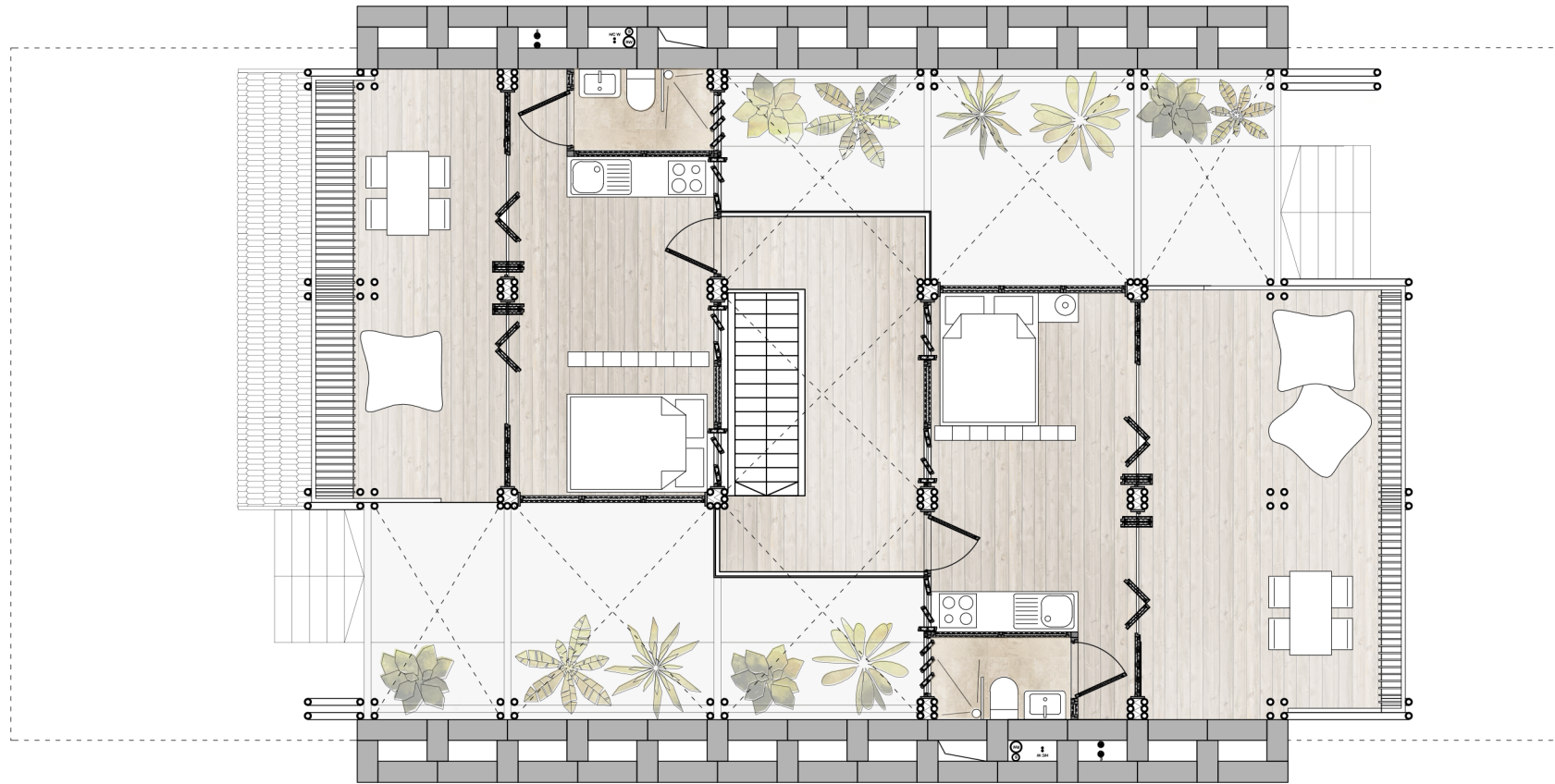


scale 1:100





two family houses  
*first floor - stage 1*

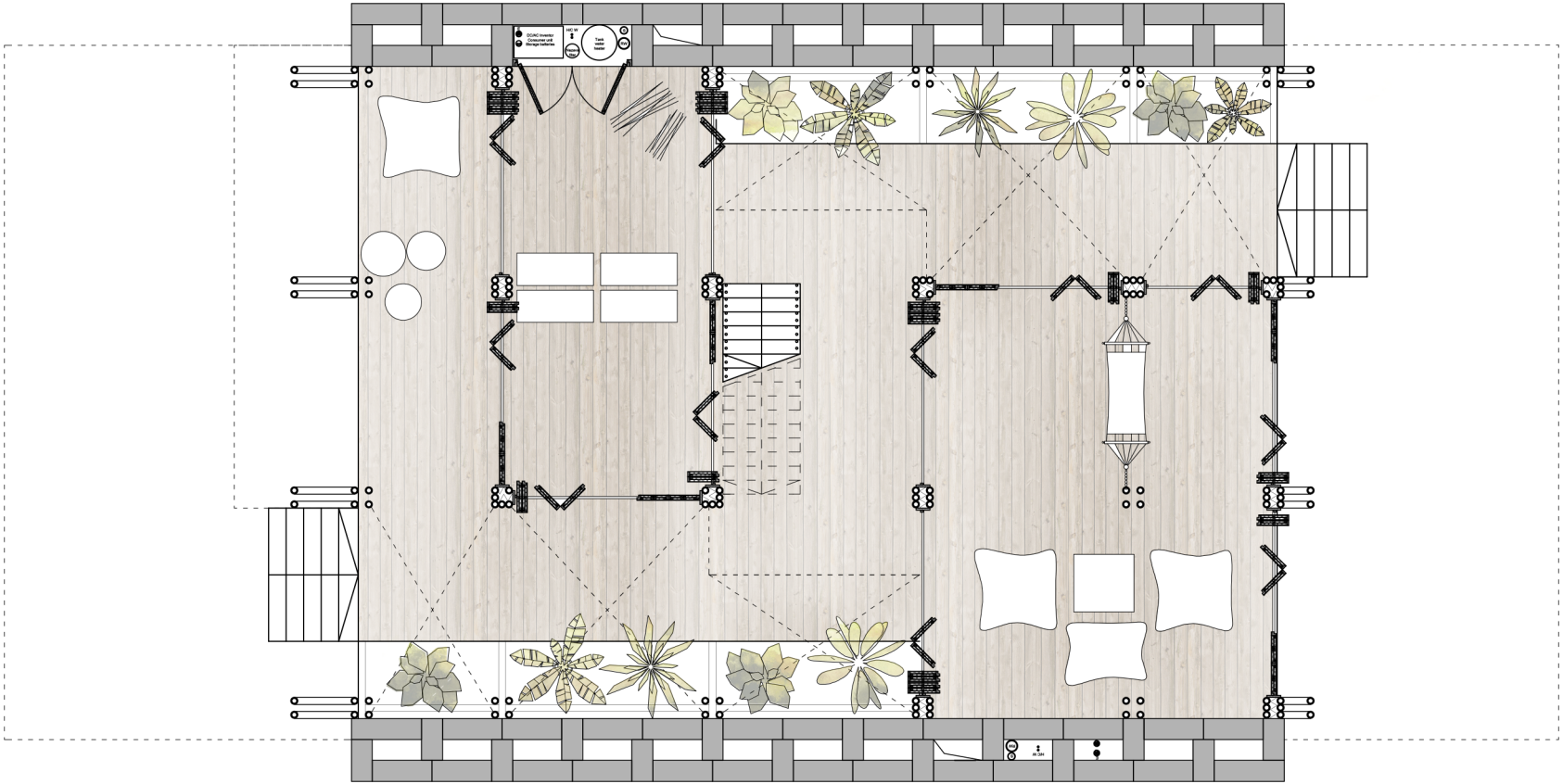


scale 1:100



two family houses

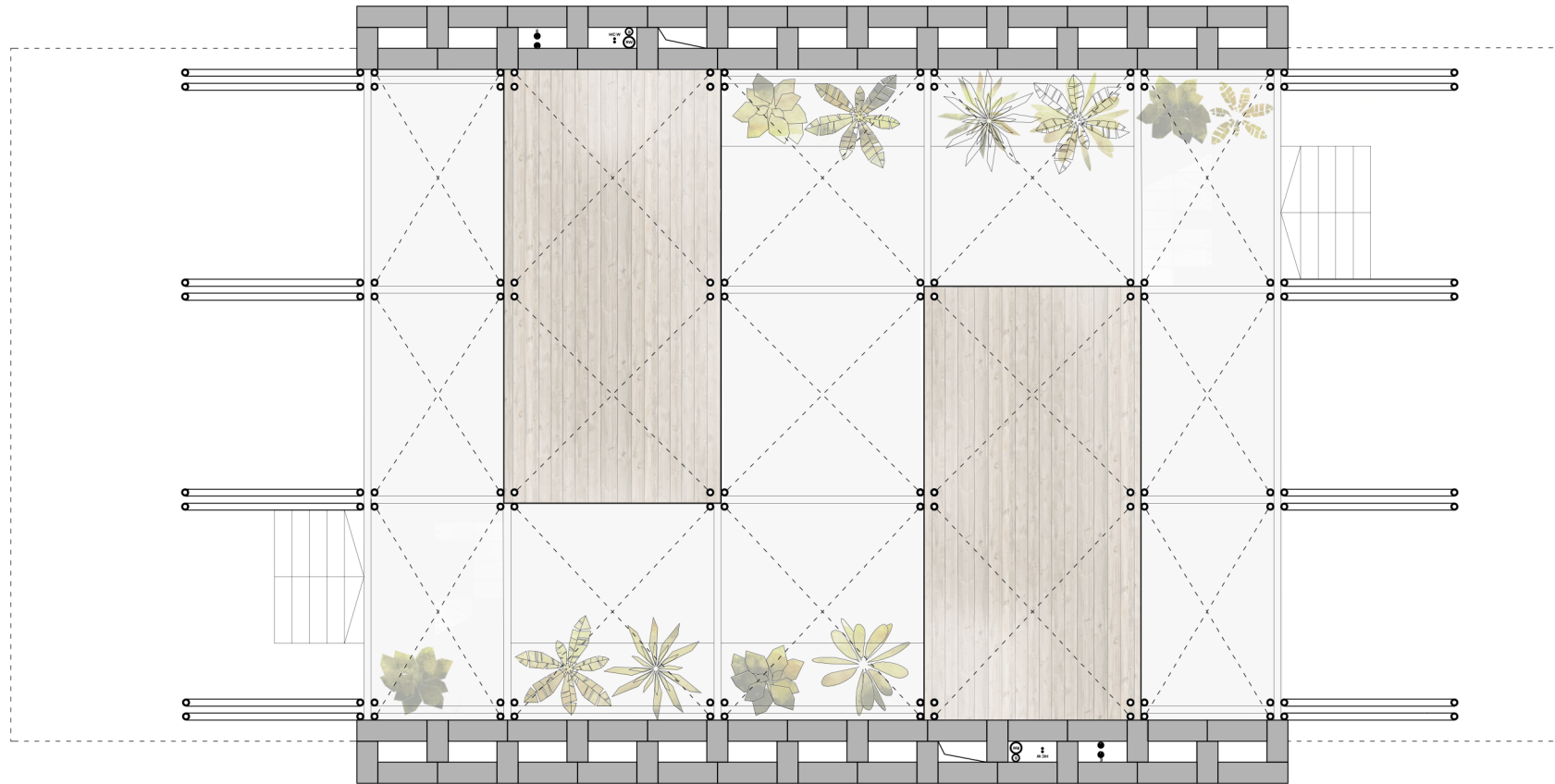
*first floor - stage 2*



scale 1:100



two family houses  
*second floor - stage 1*

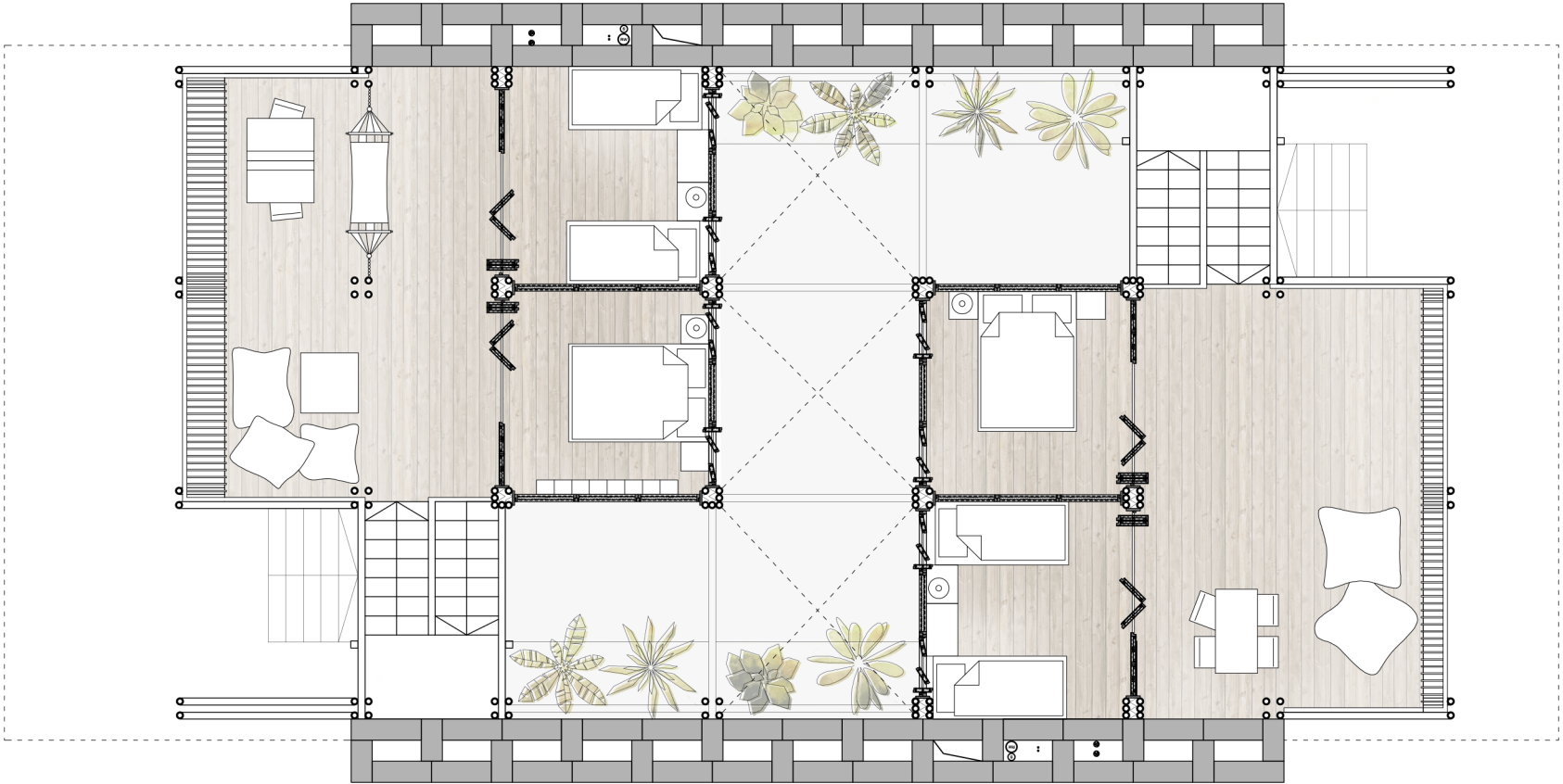


scale 1:100



two family houses

second floor - stage 2

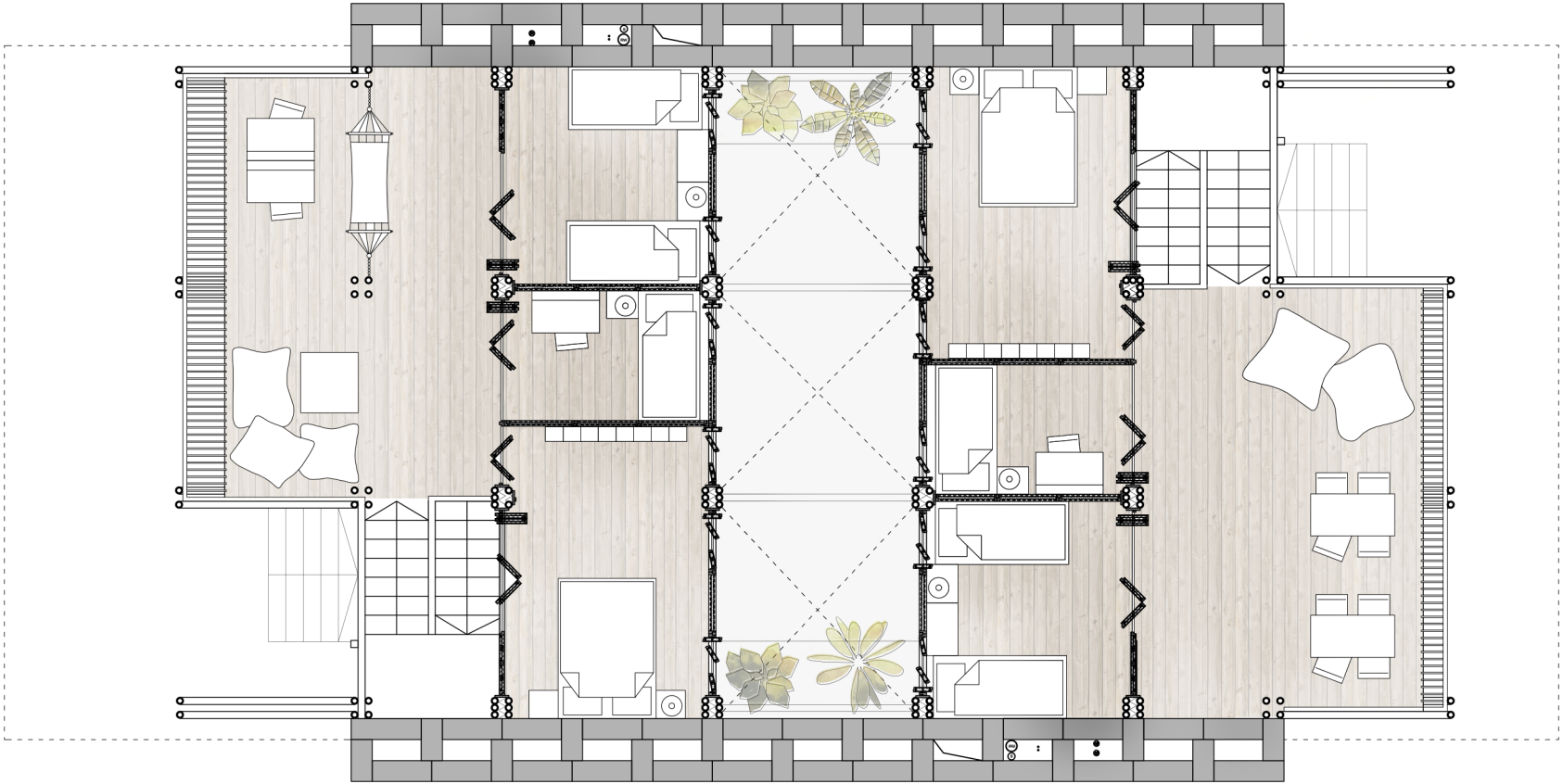


scale 1:100



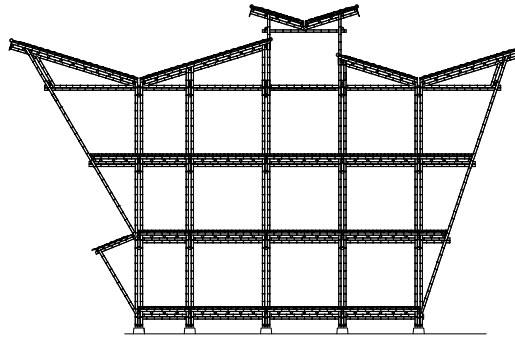
two family houses

second flor - stage 3



scale 1:100



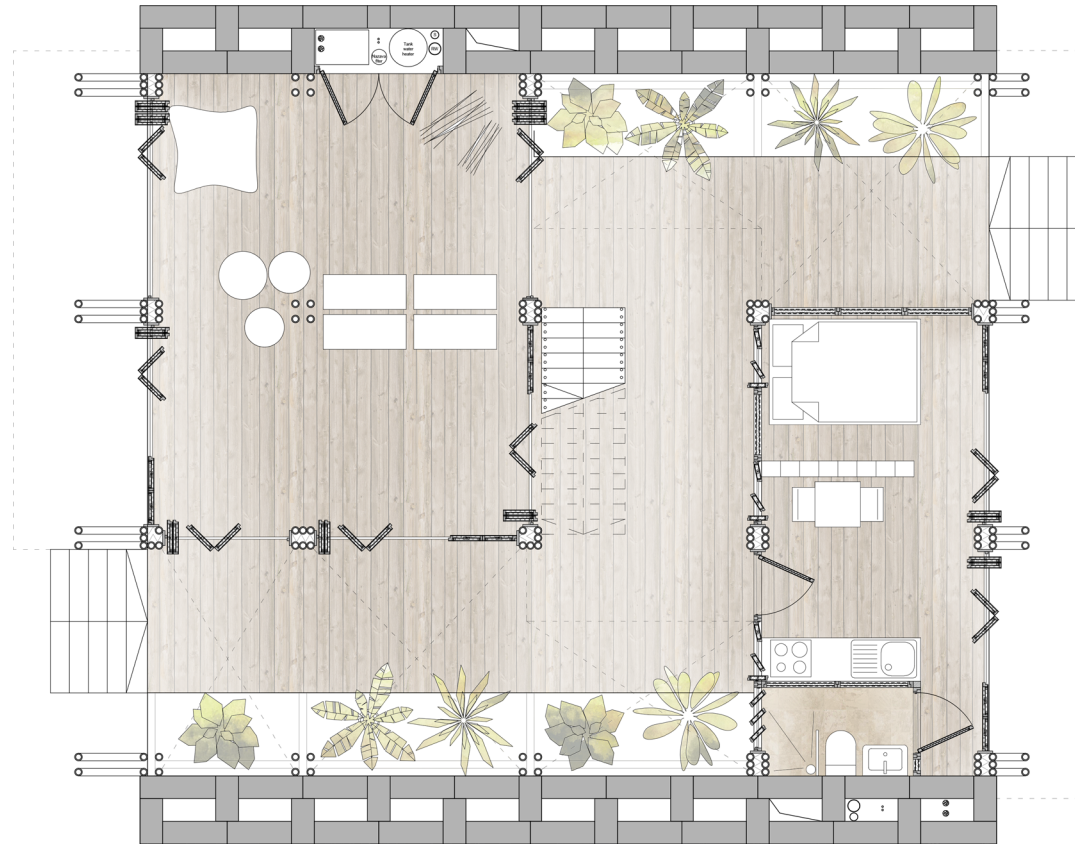


medium house 1: one family houses, three worker flats

---

*plot: 9m x 11m      3 floors*

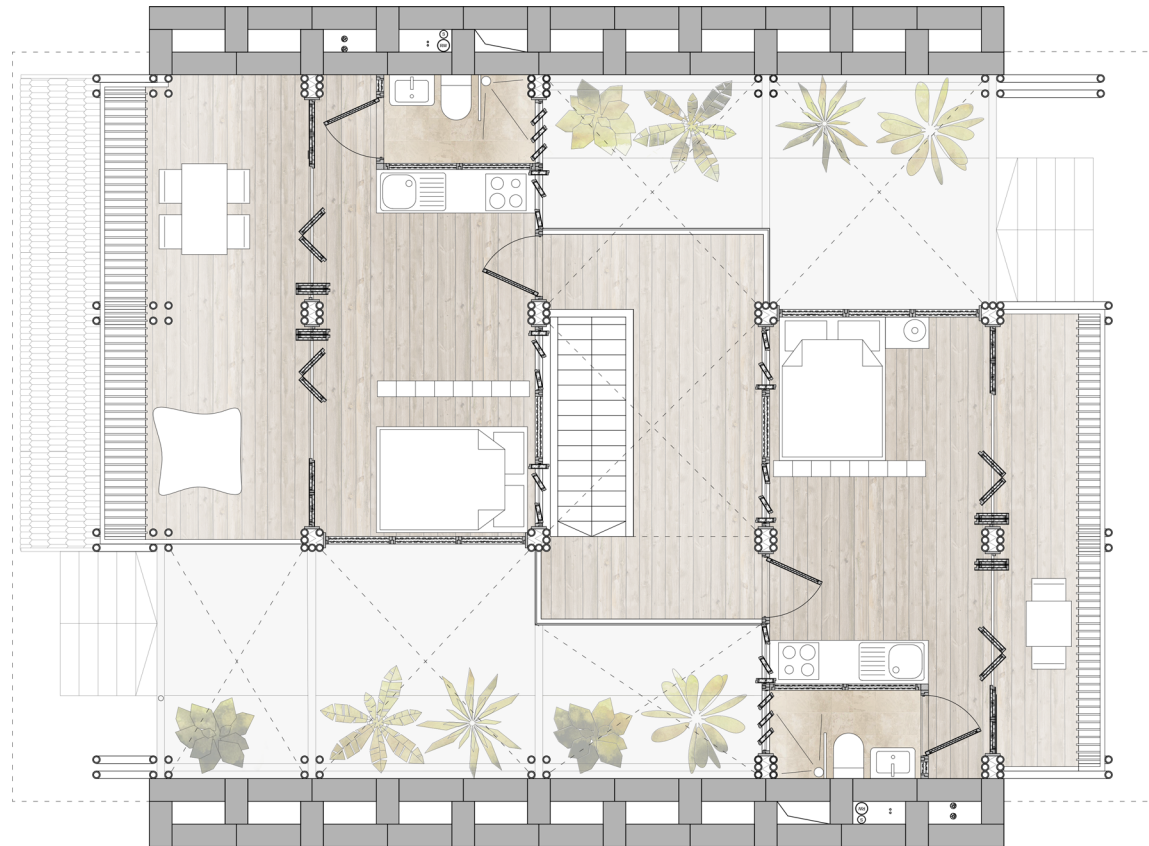
one family house, three worker flats  
*ground floor*



scale 1:100



one family house, three worker flats  
*first floor - stage 1*

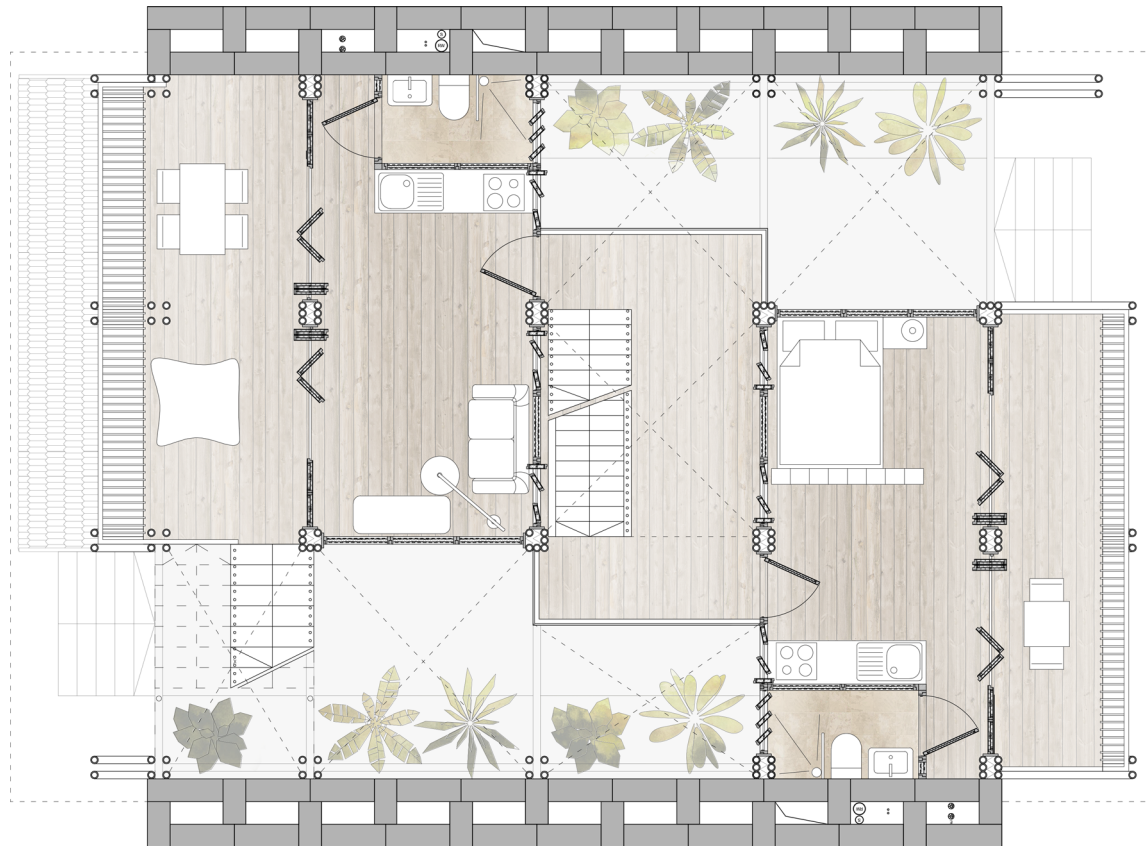


scale 1:100





one family house, three worker flats  
*first floor - stage 2*



scale 1:100



one family house, three worker flats  
*second floor - stage 1*



scale 1:100



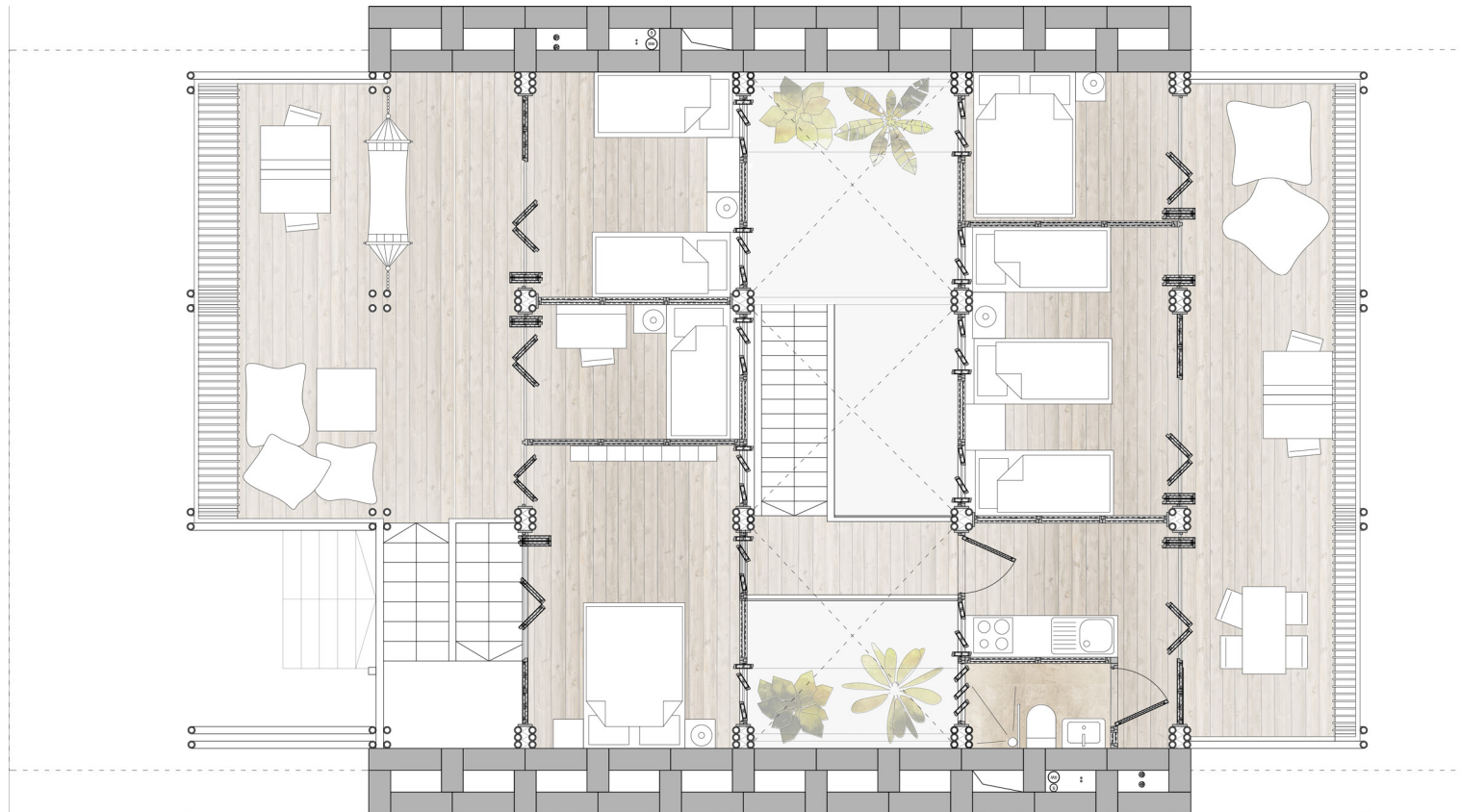
one family house, three worker flats  
*second floor - stage 2*



scale 1:100

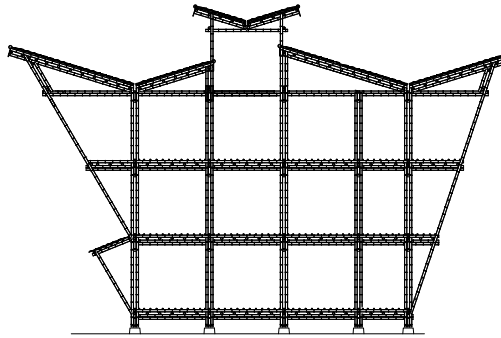


one family house, three worker flats  
second flor - stage 3



scale 1:100



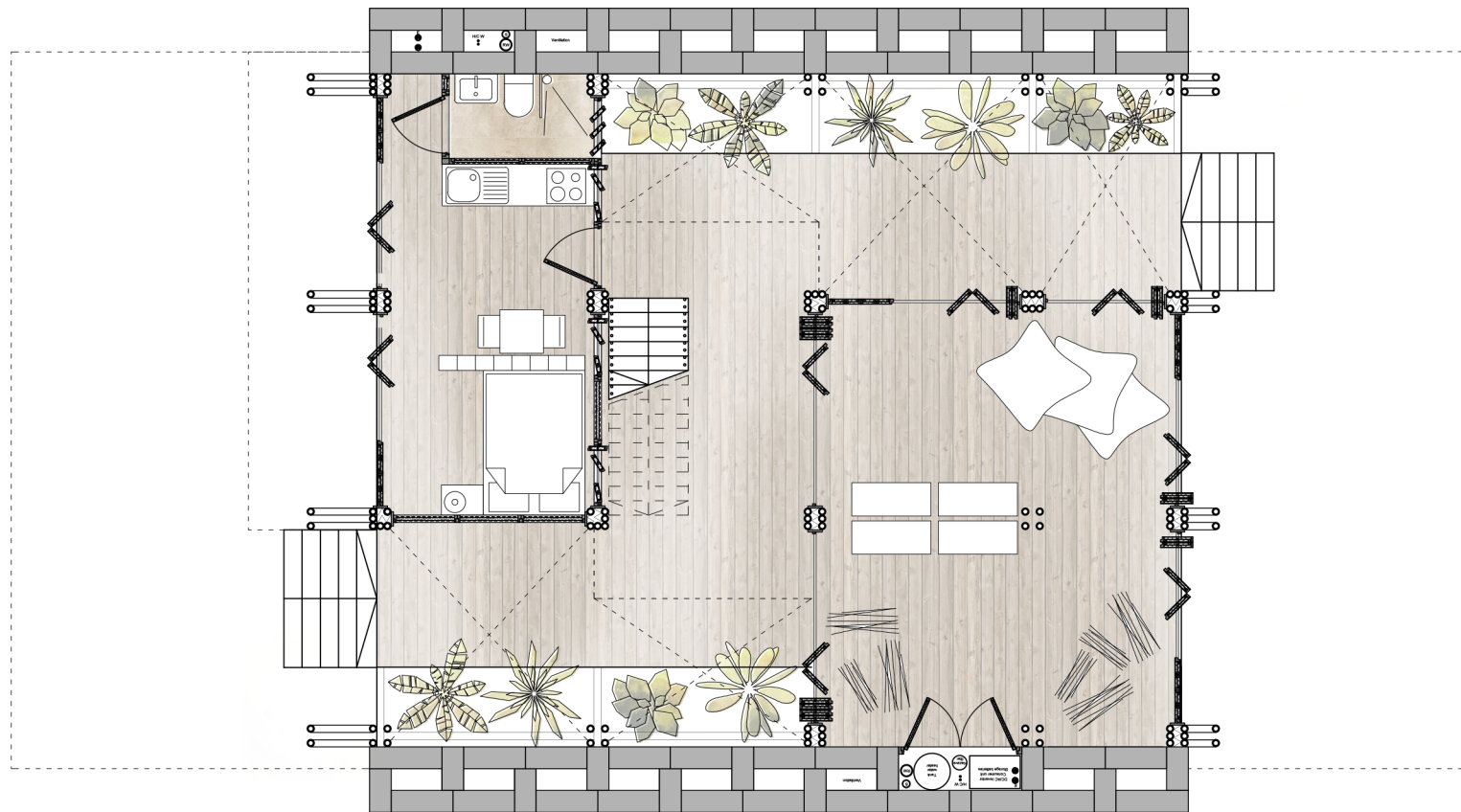


medium house 2: three worker flats, one family house

---

*plot: 9m x 11m      3 floors*

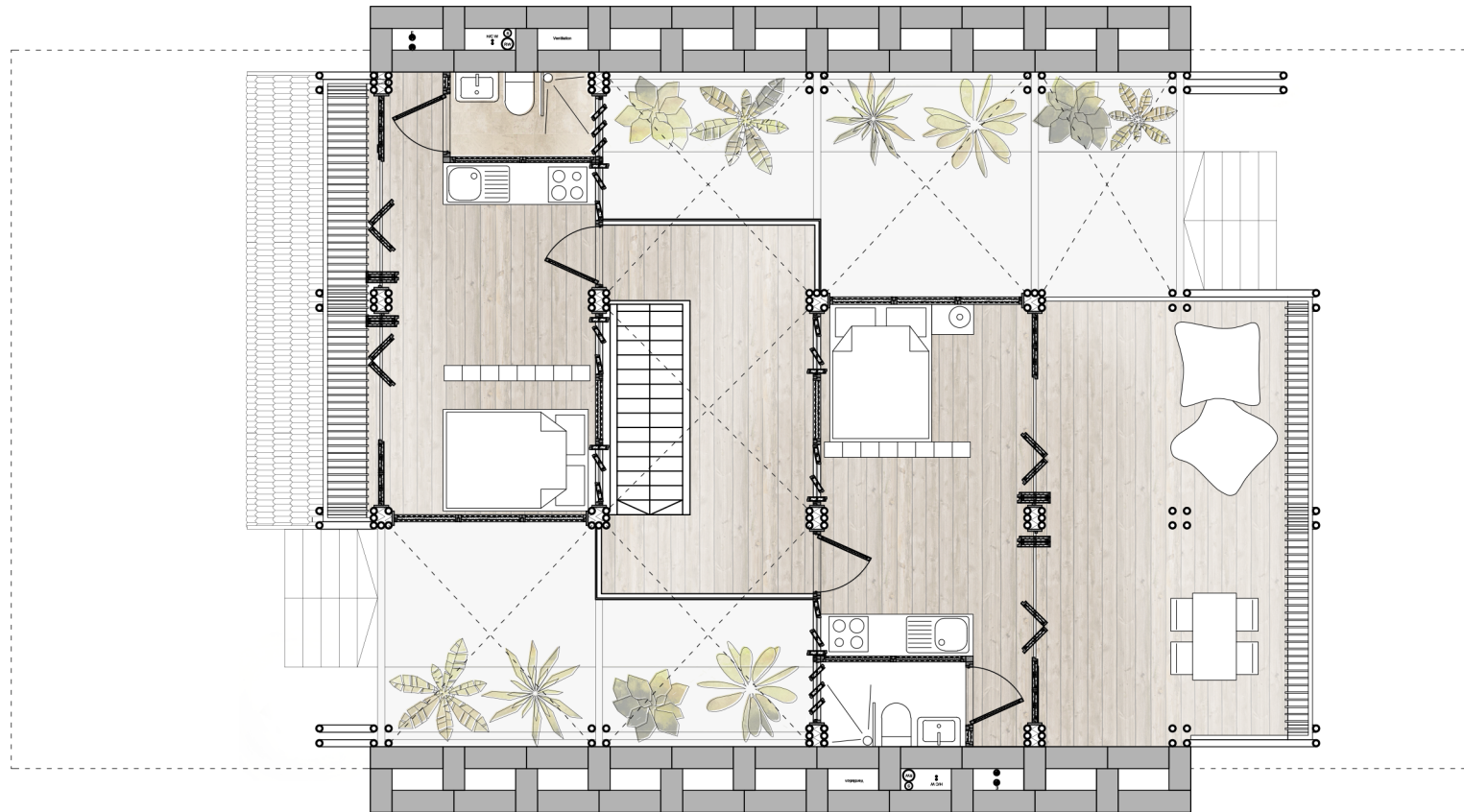
three, worker flats, one family house  
*ground floor*



scale 1:100



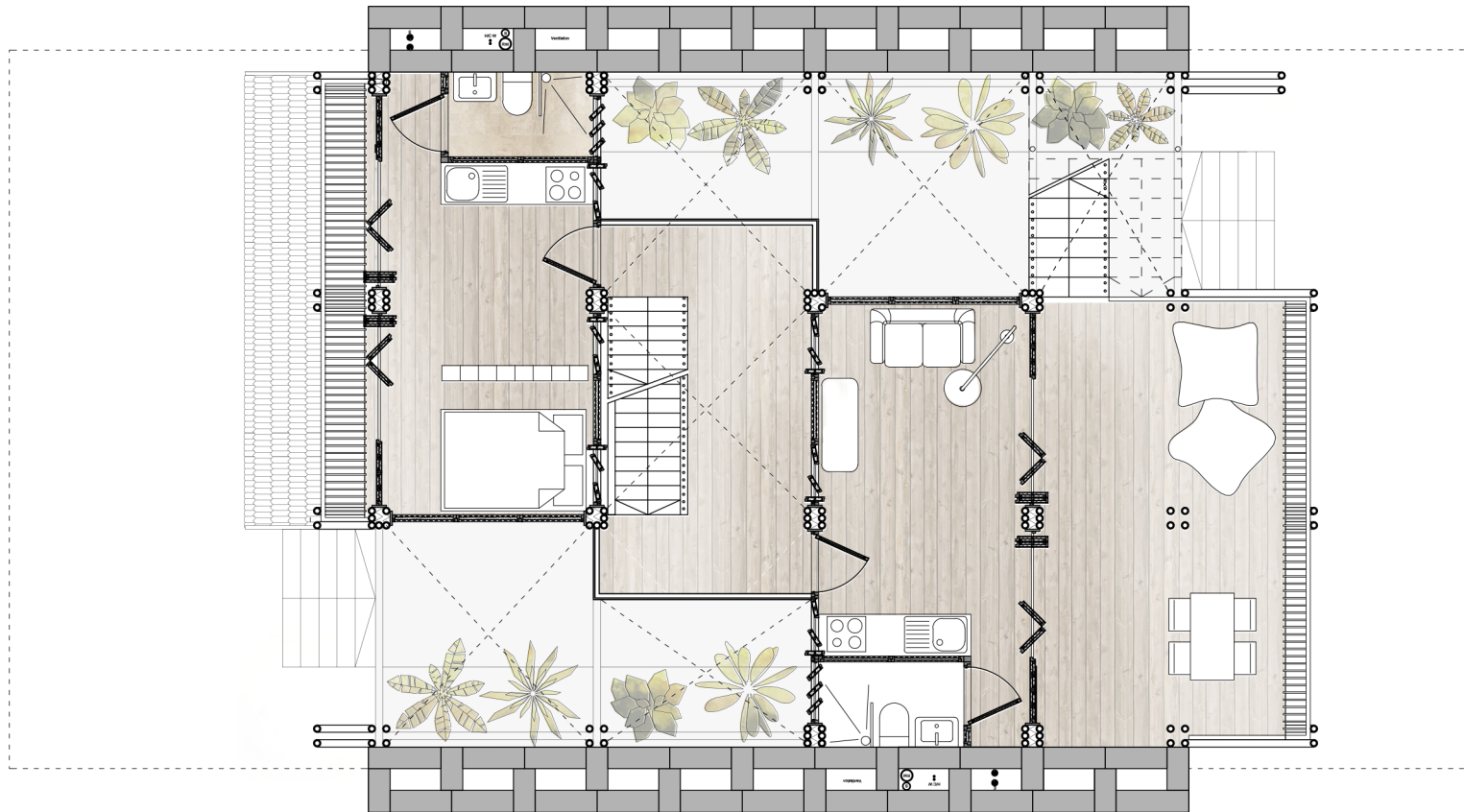
three, worker flats, one family house  
*first floor - stage 1*



scale 1:100



three, worker flats, one family house  
*first floor - stage 2*

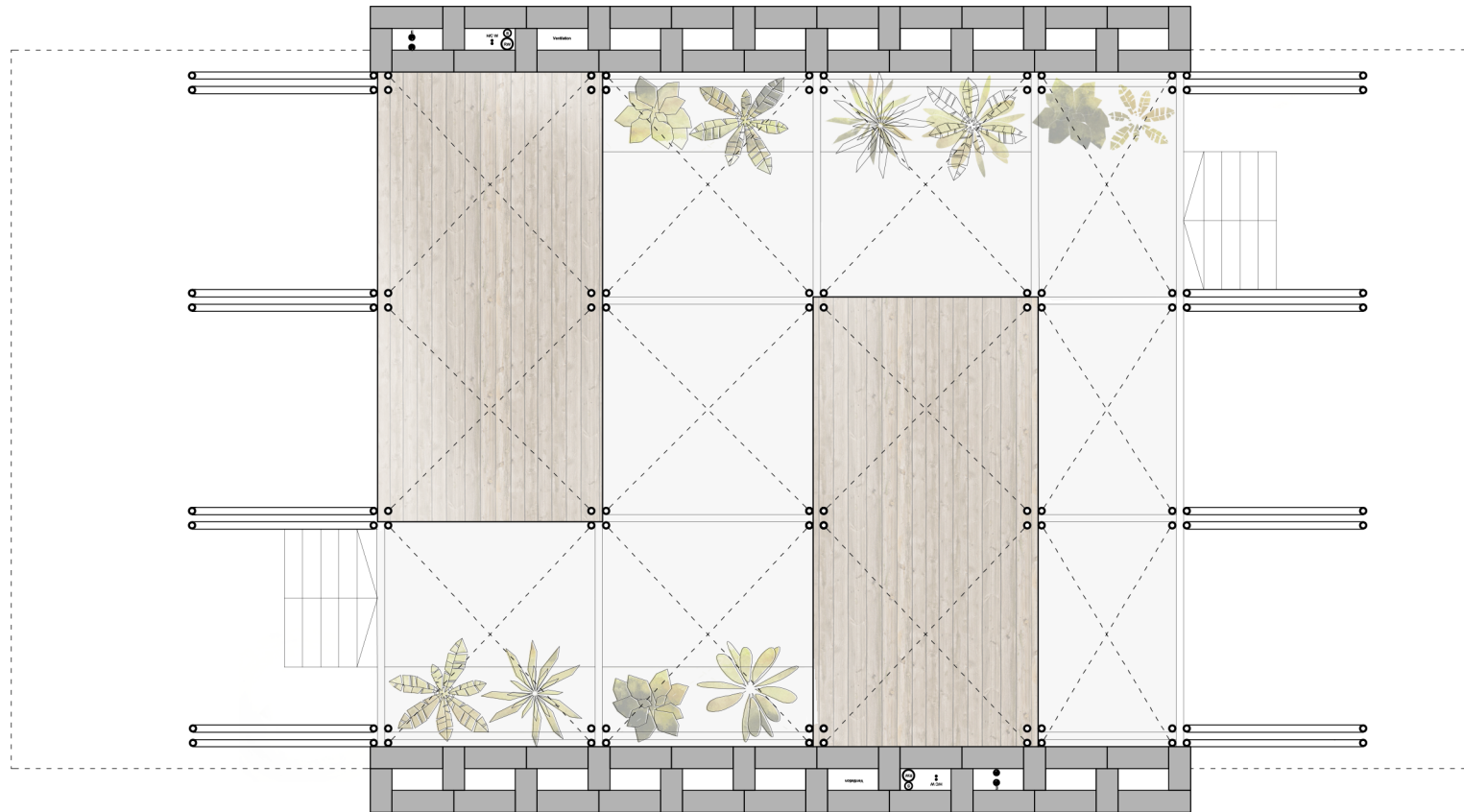


scale 1:100





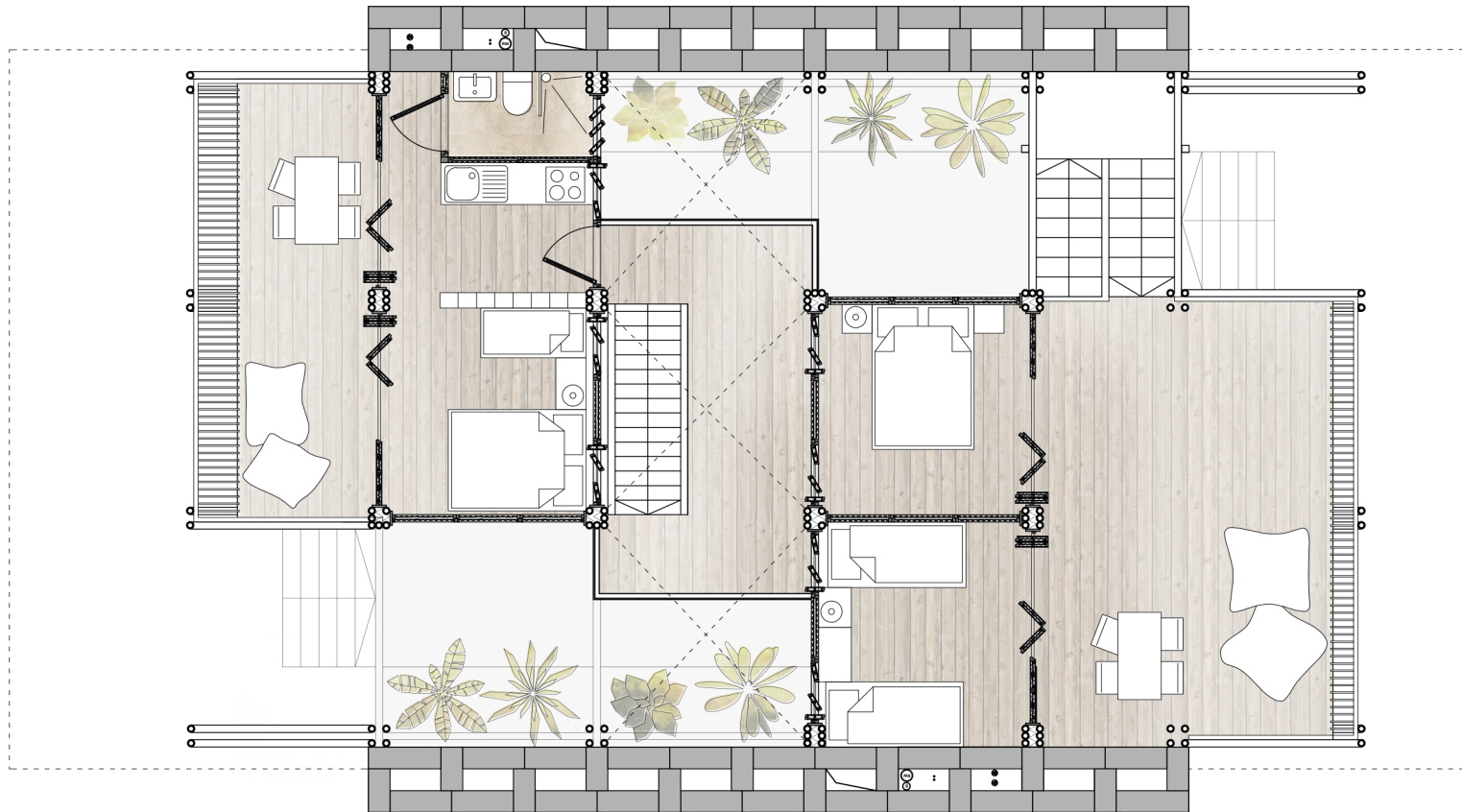
three, worker flats, one family house  
*second floor - stage 1*



scale 1:100



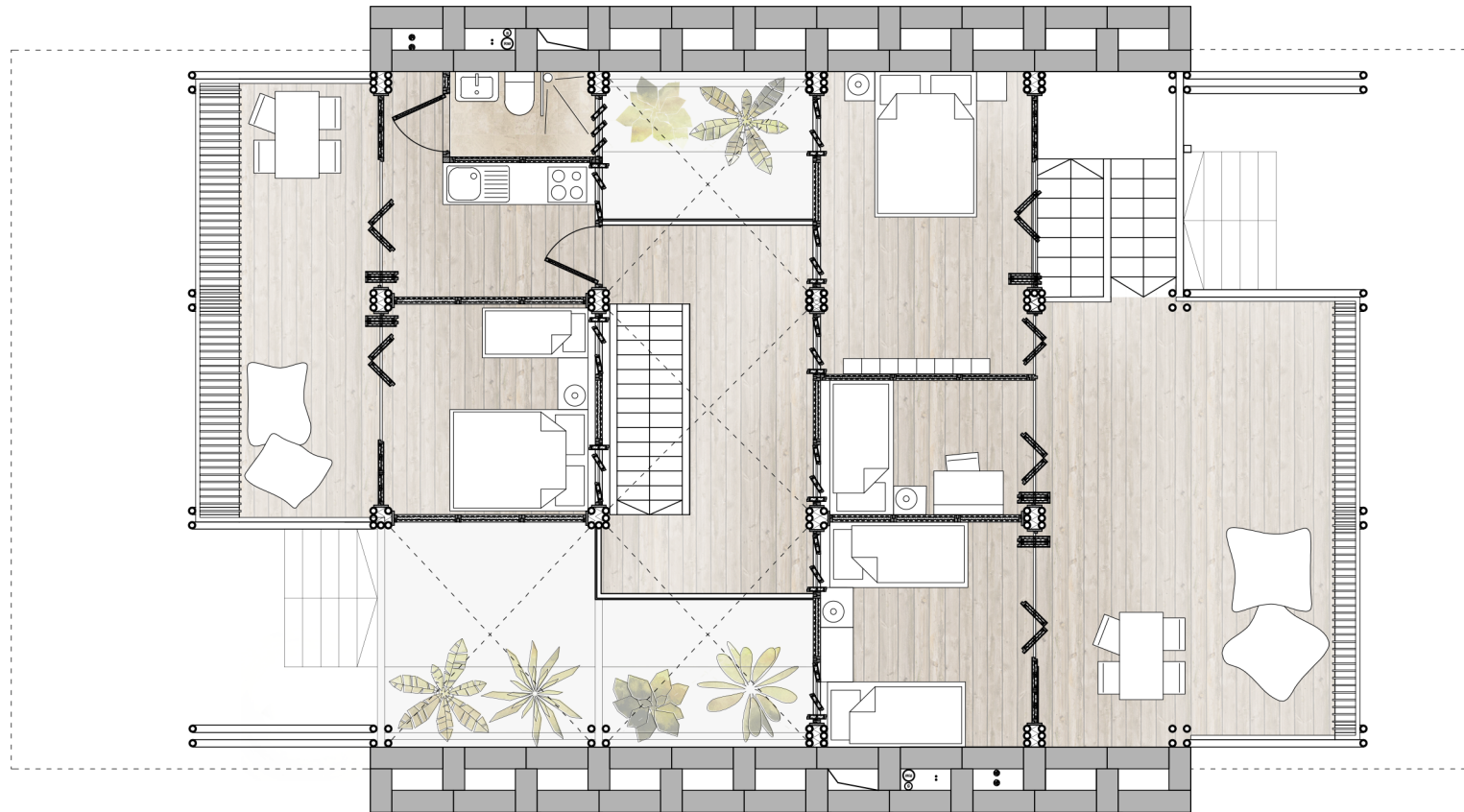
three, worker flats, one family house  
*second floor - stage 2*



scale 1:100

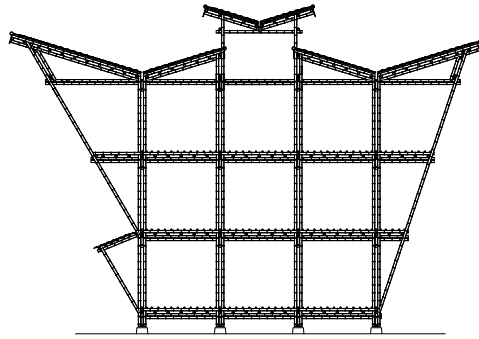


three, worker flats, one family house  
*second flor - stage 3*



scale 1:100



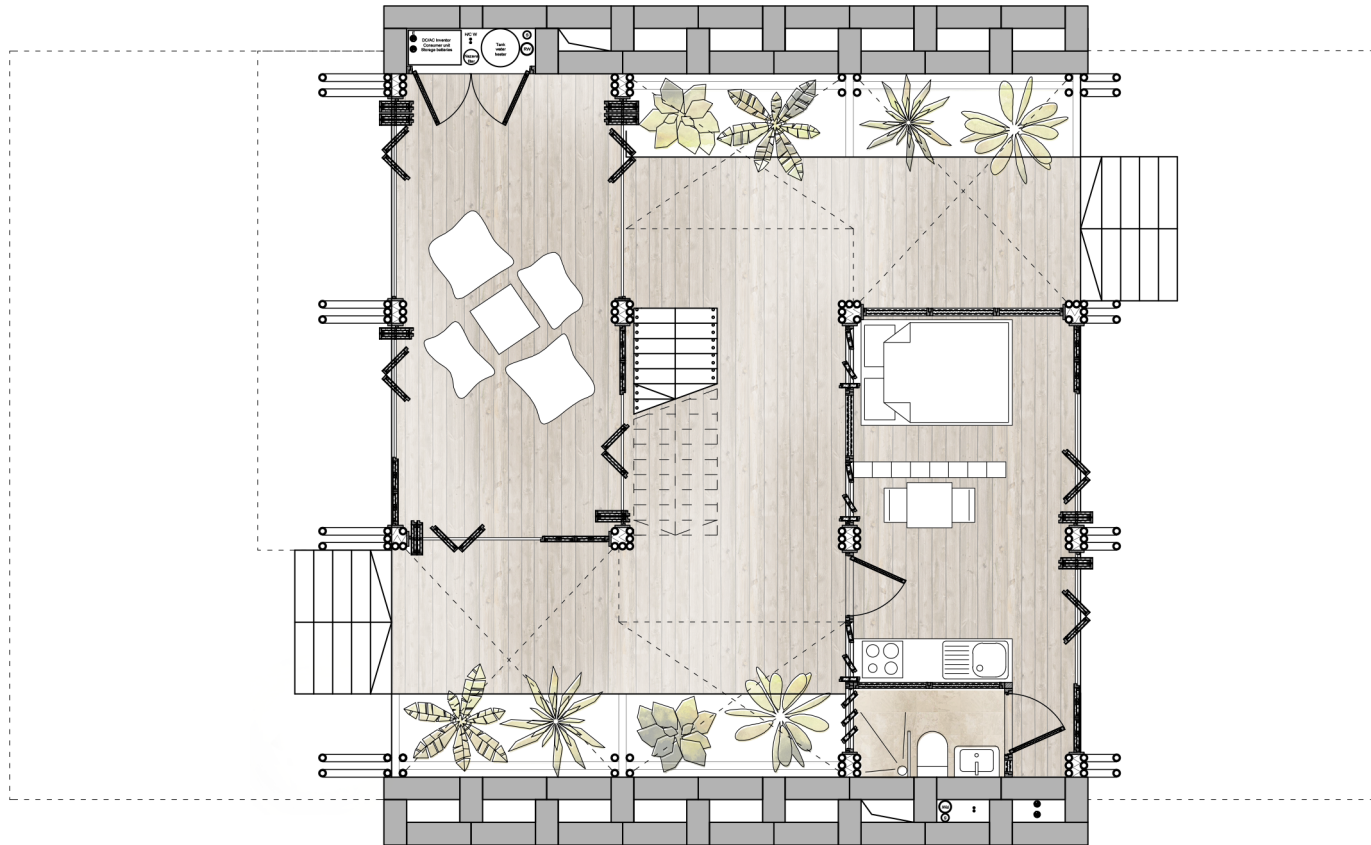


small house: five worker flats

---

*plot: 9m x 9m*      *3 floors*

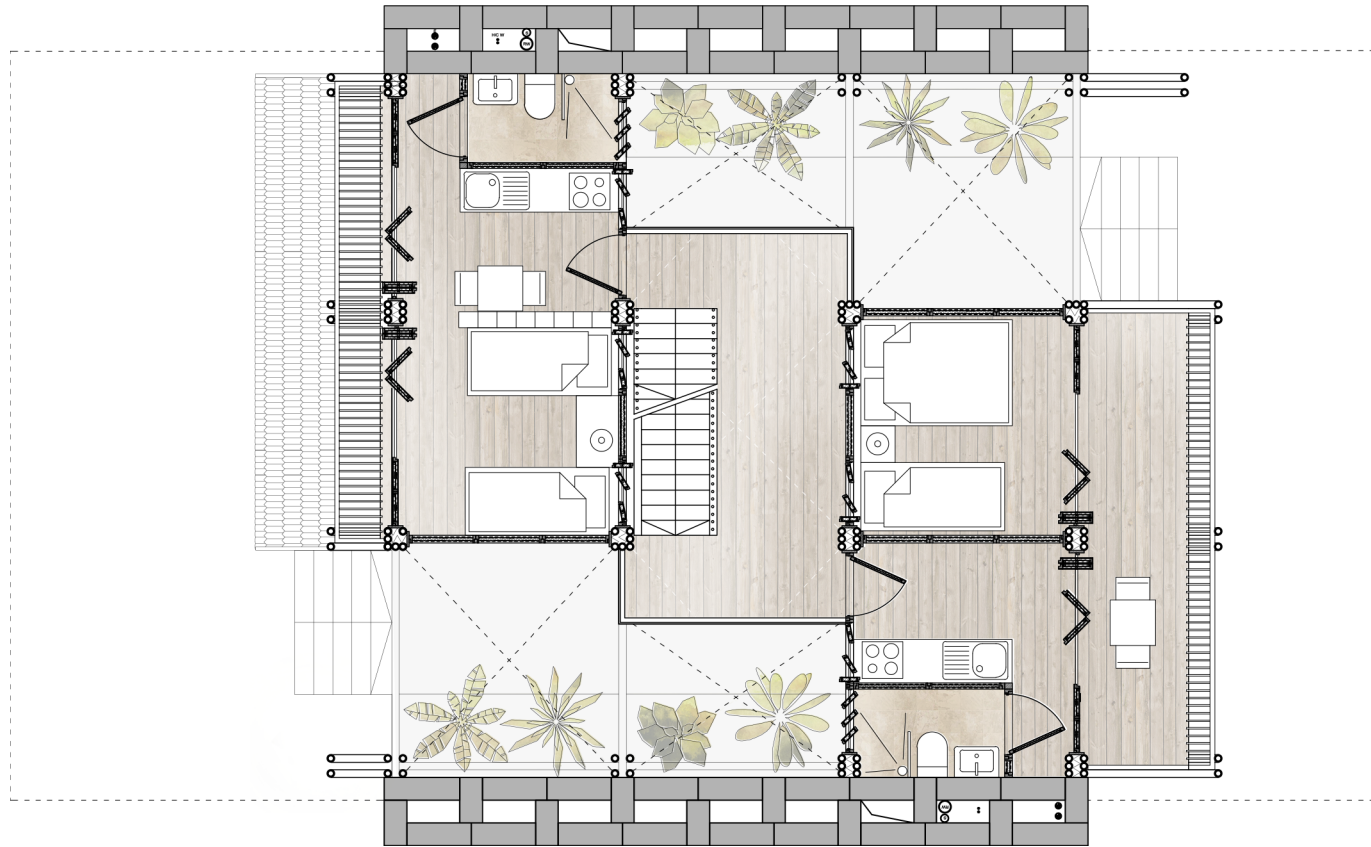
five worker flats  
ground floor



scale 1:100



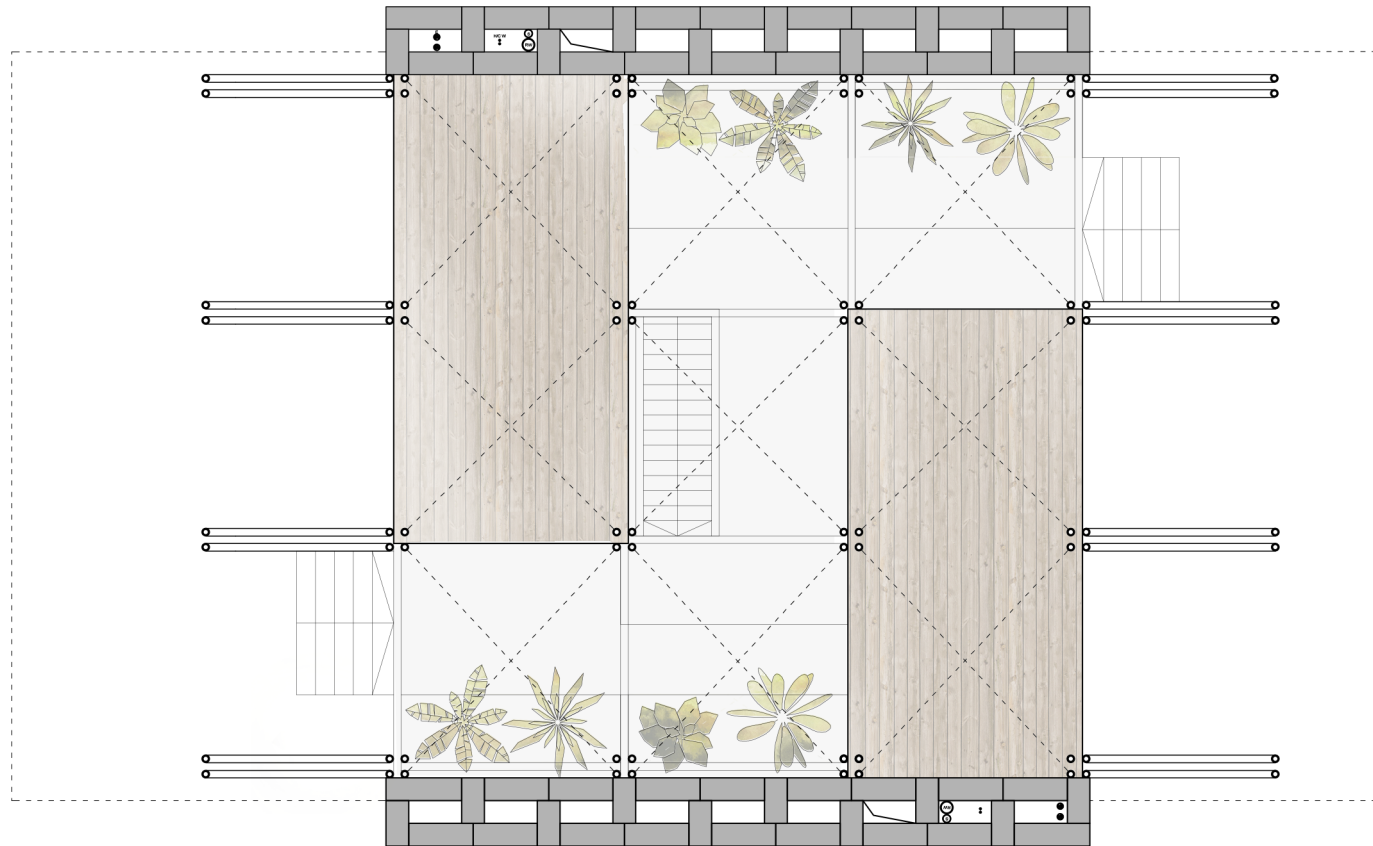
five worker flats  
*first floor*



scale 1:100



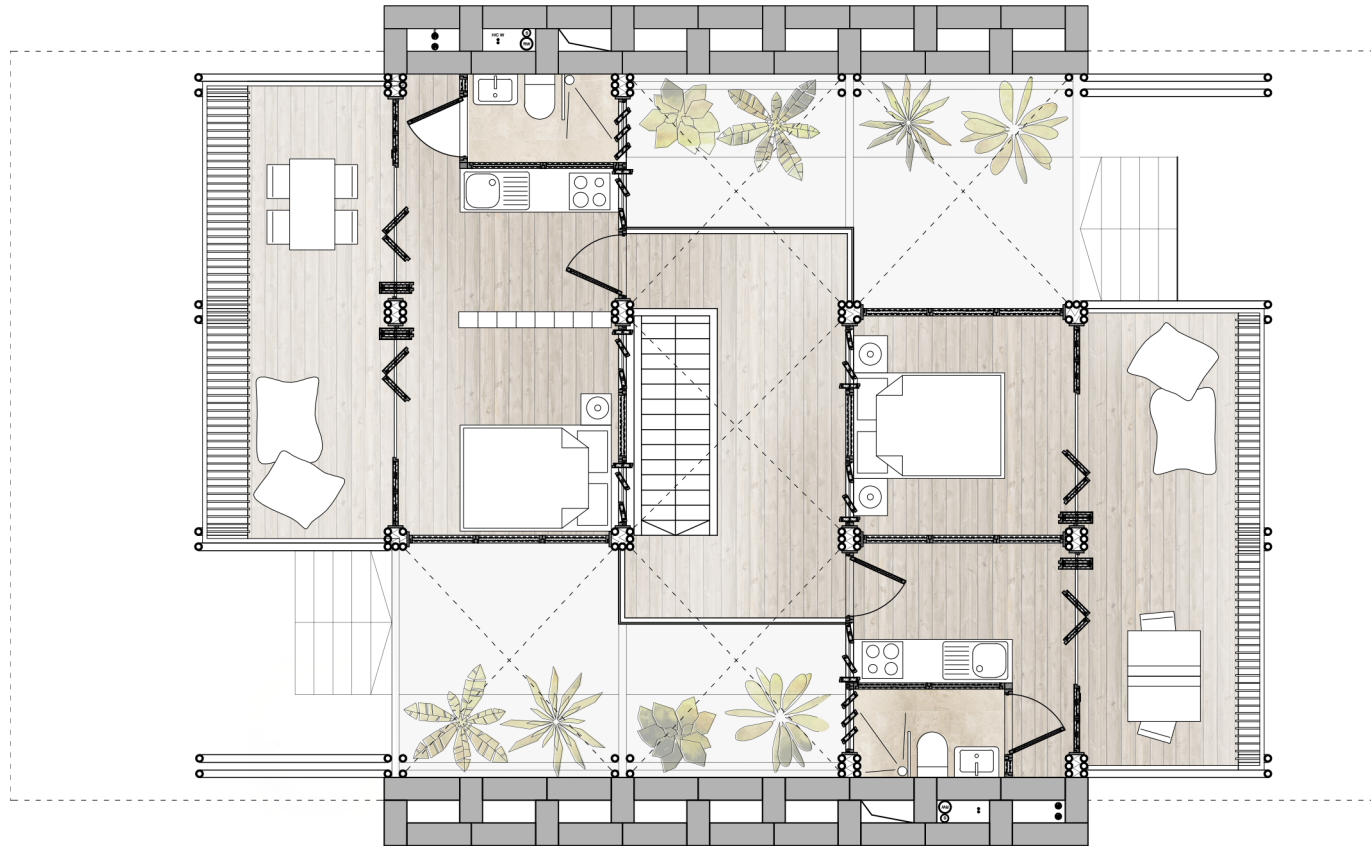
five worker flats  
second floor - stage 1



scale 1:100



five worker flats  
second floor - stage 2

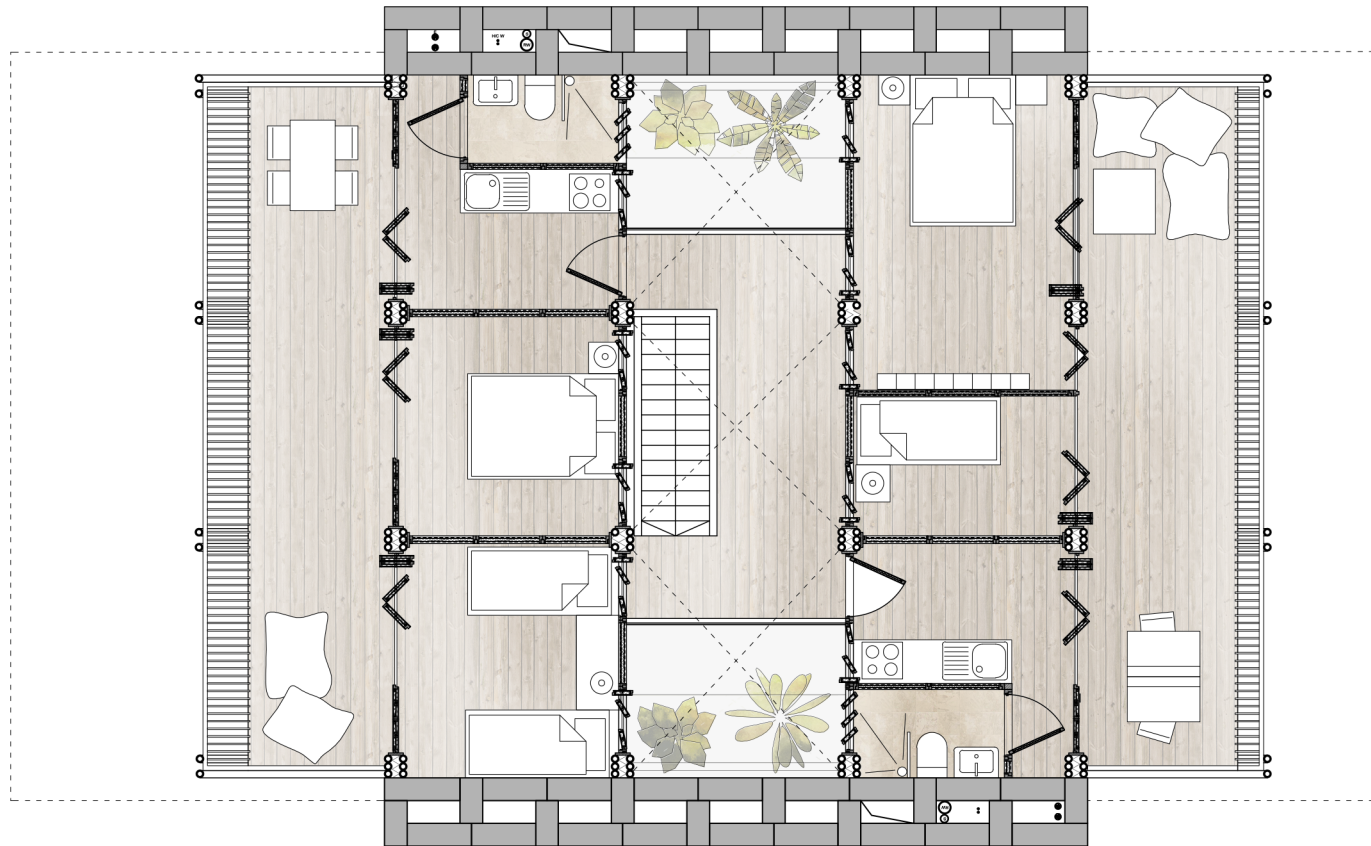


scale 1:100



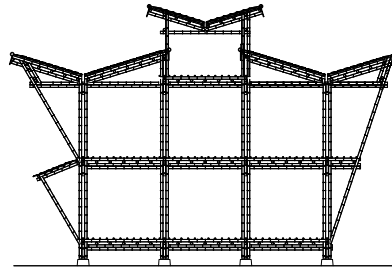


five worker flats  
second flor - stage 3



scale 1:100



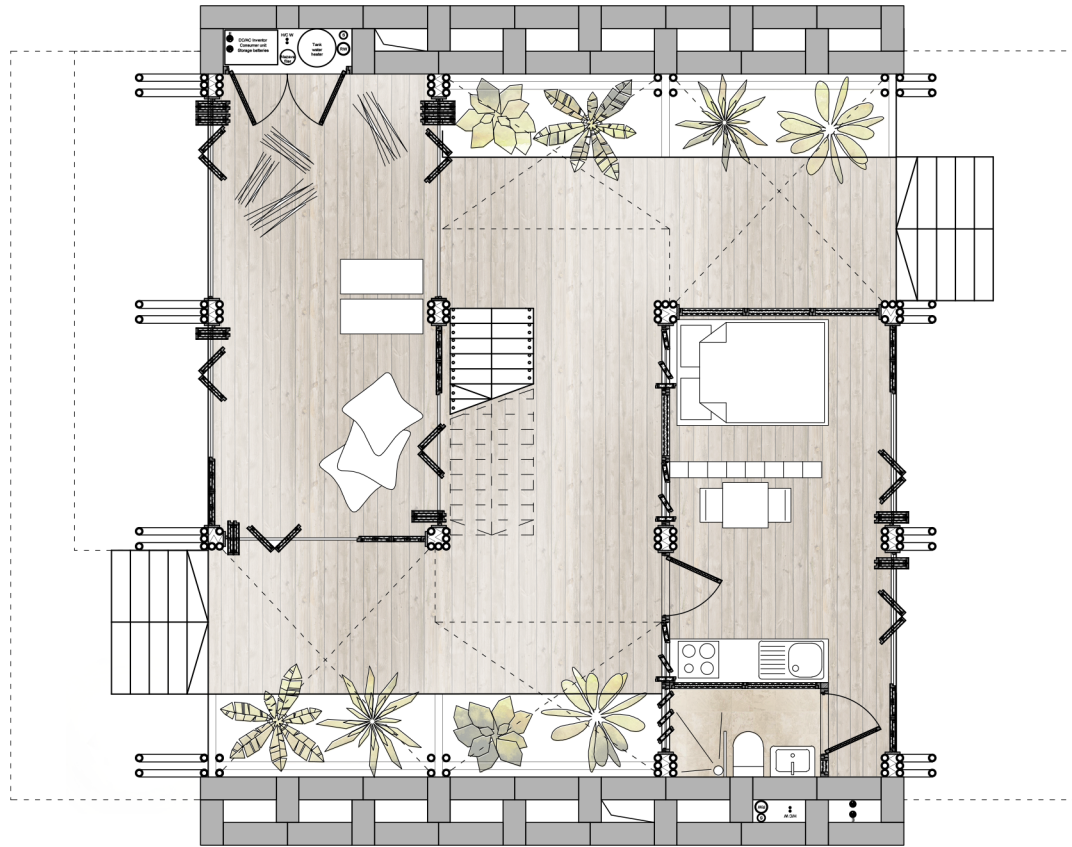


tiny house: three worker flats

---

*plot: 9m x 9m      2 floors*

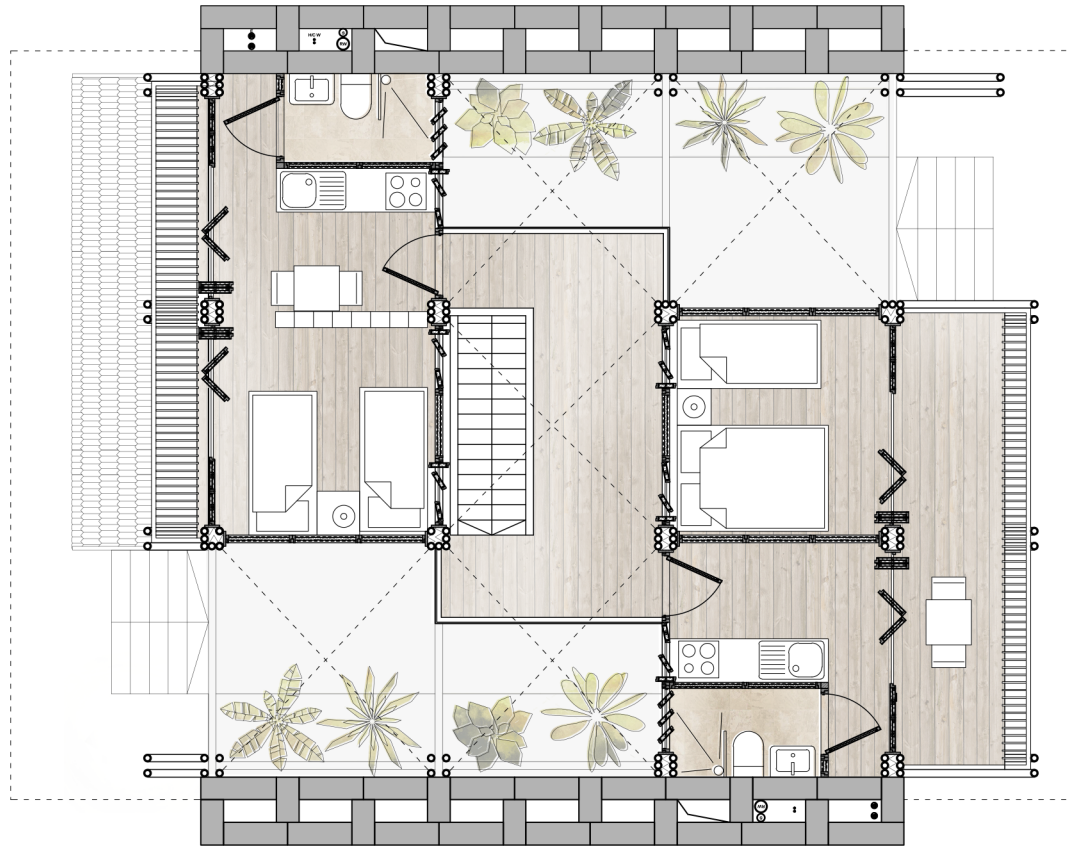
three worker flats  
*ground floor*



scale 1:100



three worker flats  
*first floor*



scale 1:100

