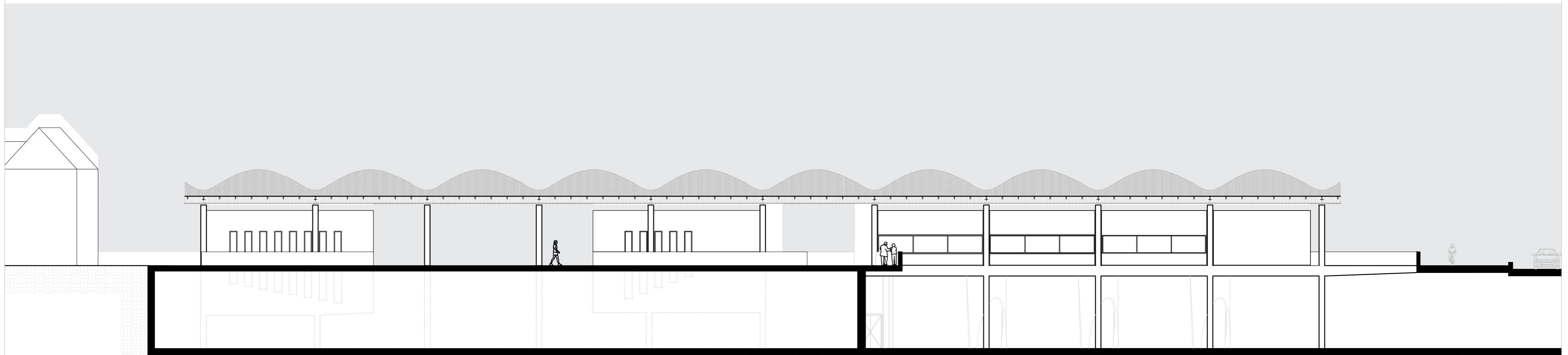
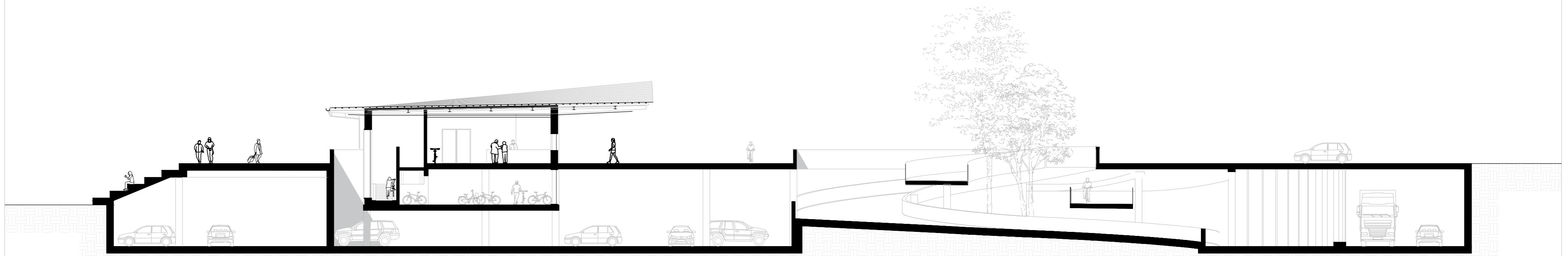


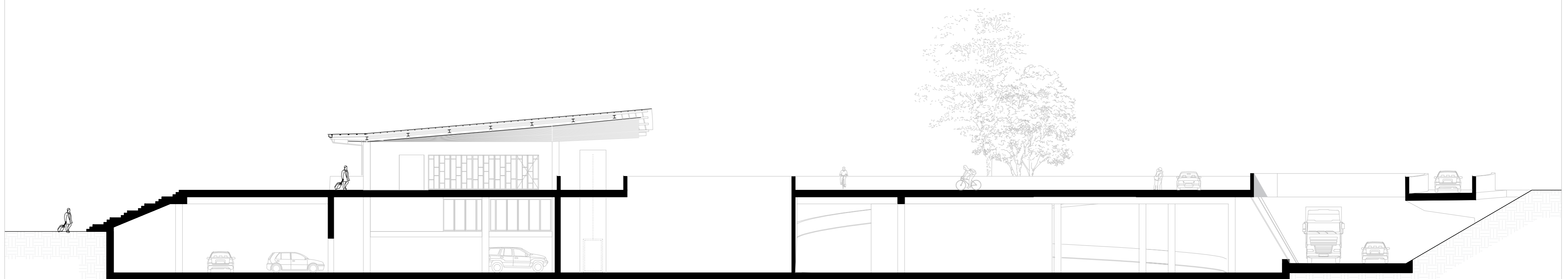
right elevation



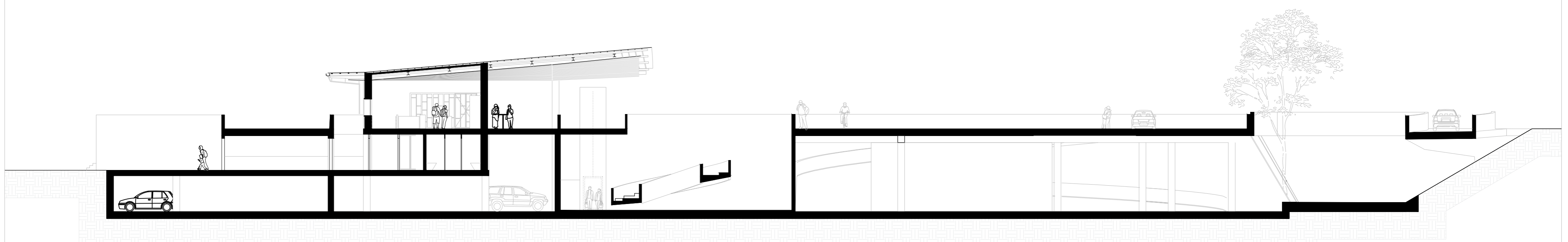
left elevation



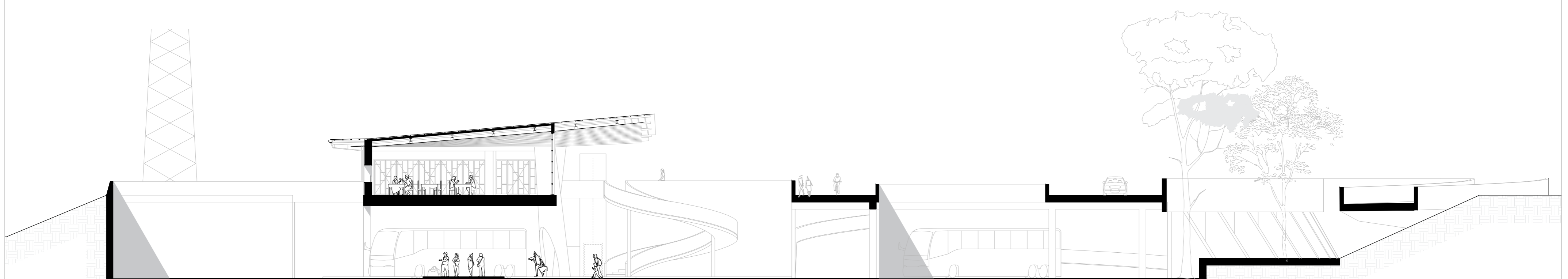
section C-C'



section C-C'



section C-C'



section D-D'



top roof ▼ 6300\*

top concrete ▼ 4500\*

top facade ▼ 4000\*

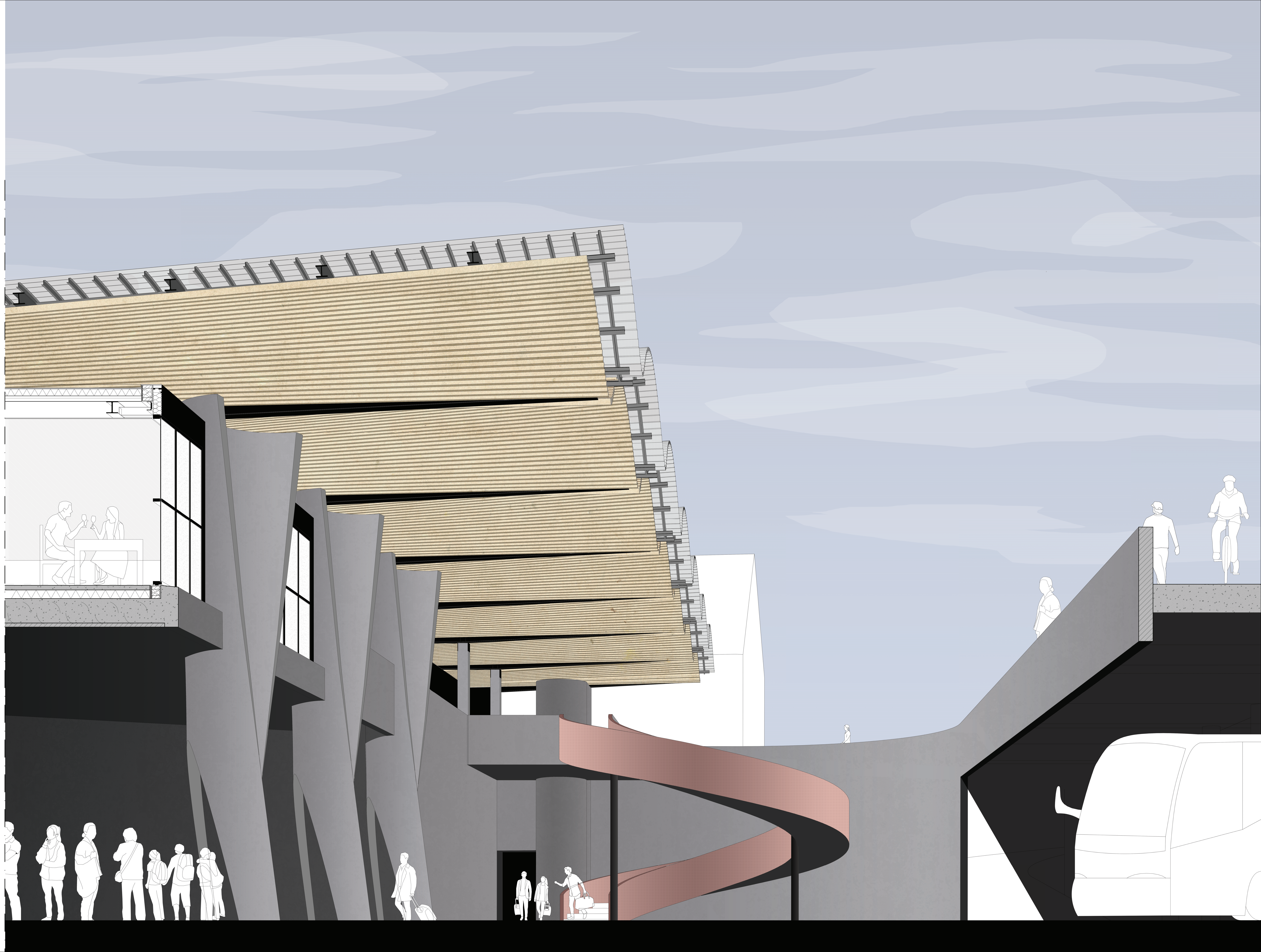
ceiling ▼ 3400\*

top floor slab ▼ 0 + P

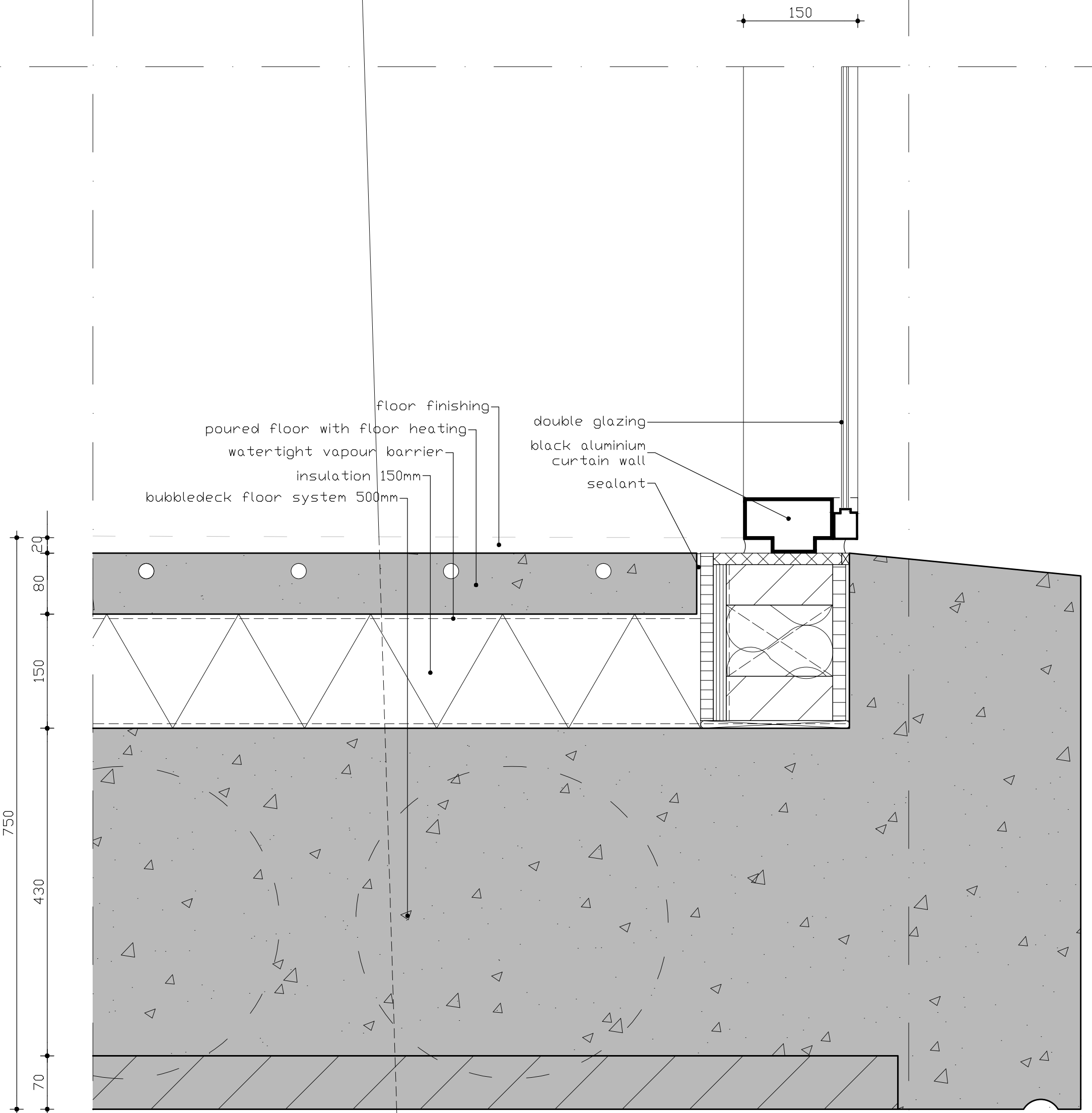
bottom floor slab ▼ -750

top arch ▼ 2750

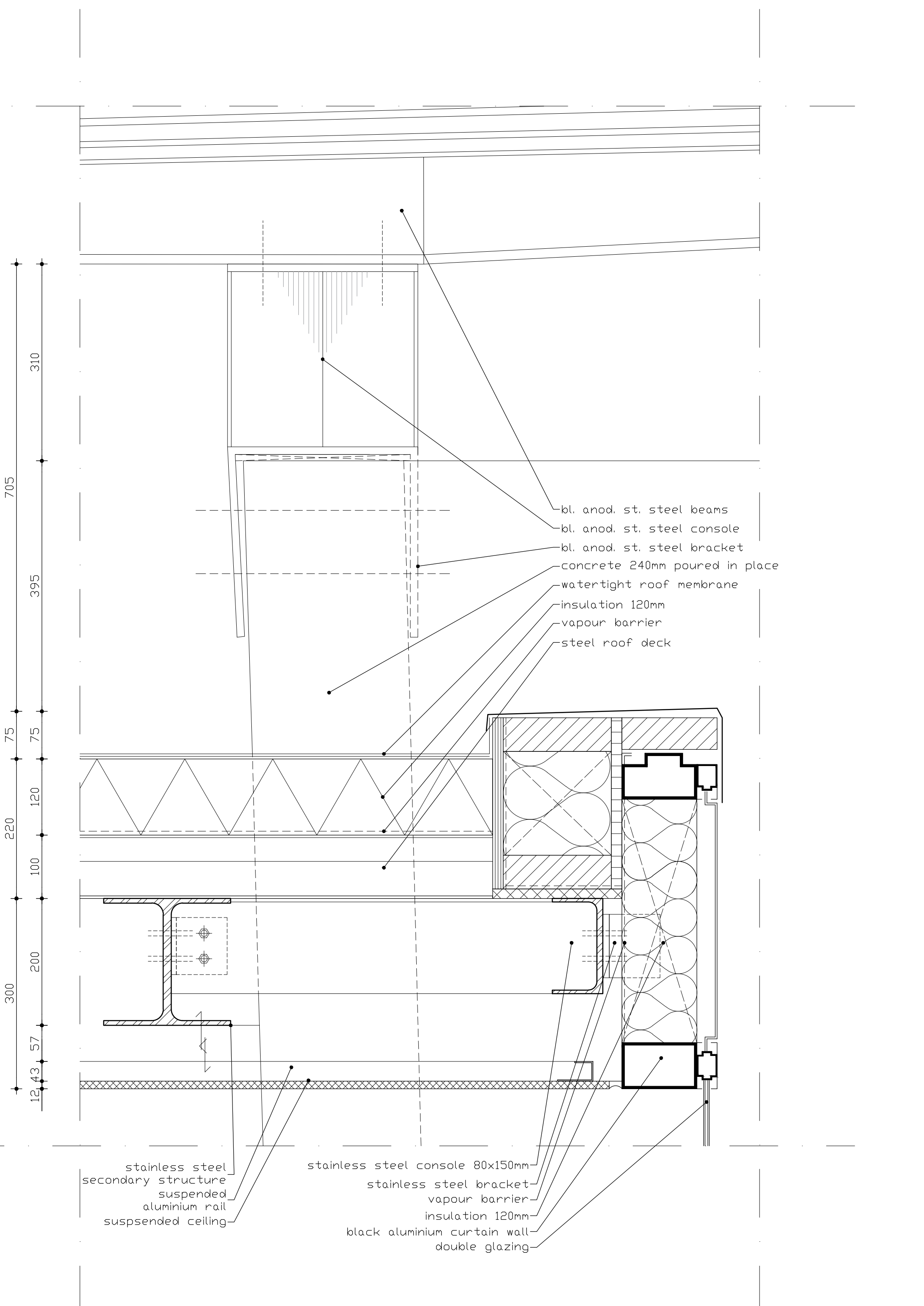
top arch ▼ 6000











705  
310  
395  
75  
75  
220  
120  
100  
300  
200  
12  
43  
57

bl. anod. st. steel beams  
bl. anod. st. steel console  
bl. anod. st. steel bracket  
concrete 240mm poured in place  
watertight roof membrane  
insulation 120mm  
vapour barrier  
steel roof deck

stainless steel  
secondary structure  
suspended  
aluminium rail  
suspended ceiling

stainless steel console 80x150mm  
stainless steel bracket  
vapour barrier  
insulation 120mm  
black aluminium curtain wall  
double glazing