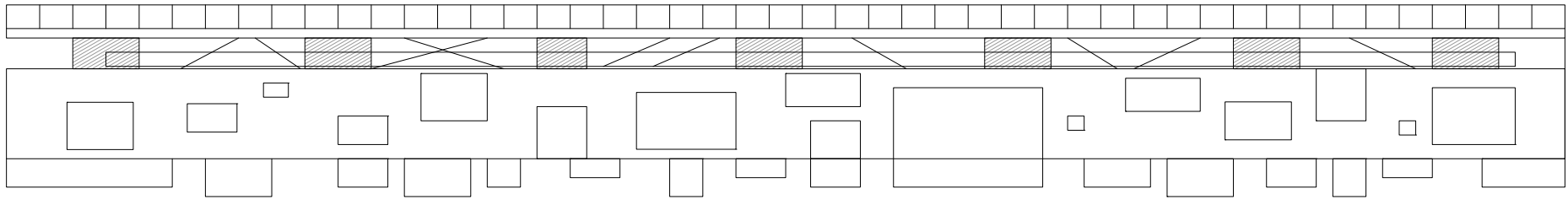


WENJIA WANG
MENTOR ROBERTO CAVALLO / HUBERT VAN DER MEEL



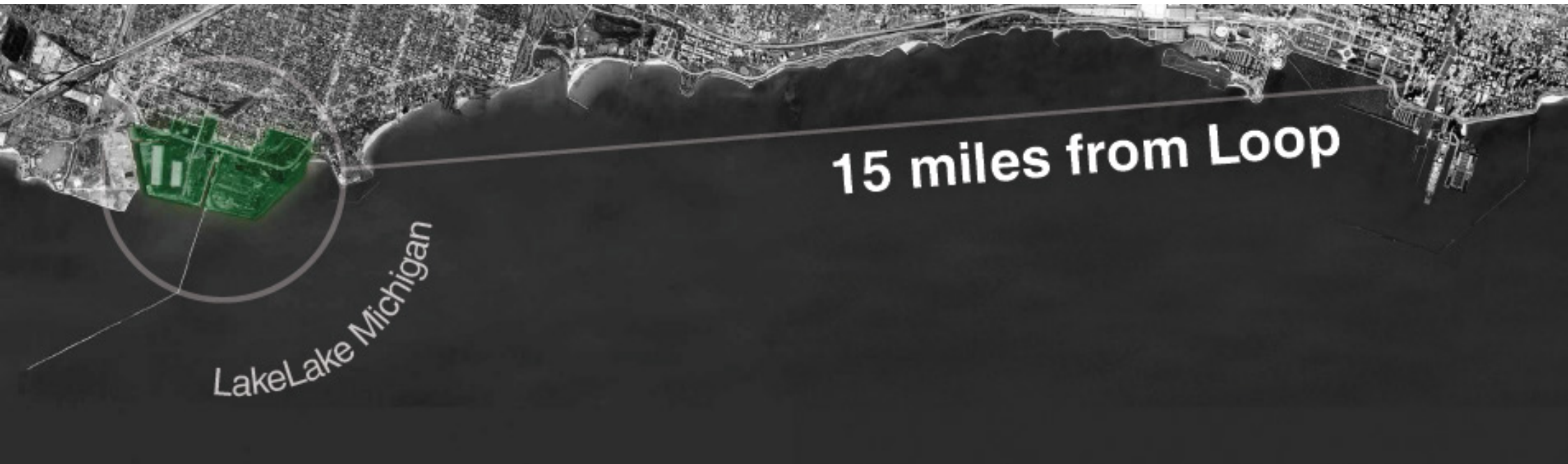
THE WALL

COMPLEX PROJECT CHICAGO GRADUATION STUDIO 2013-2014
P5 PRESENTATION

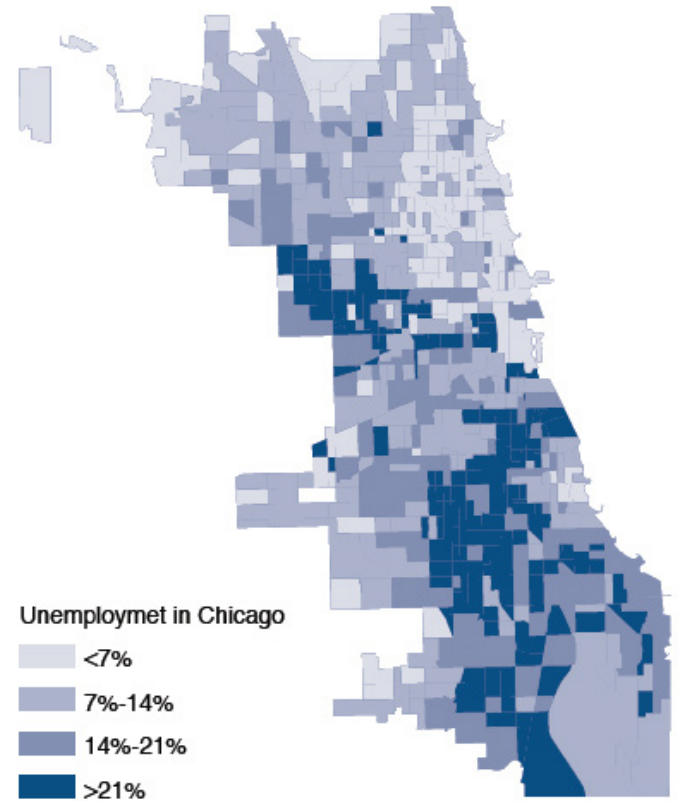
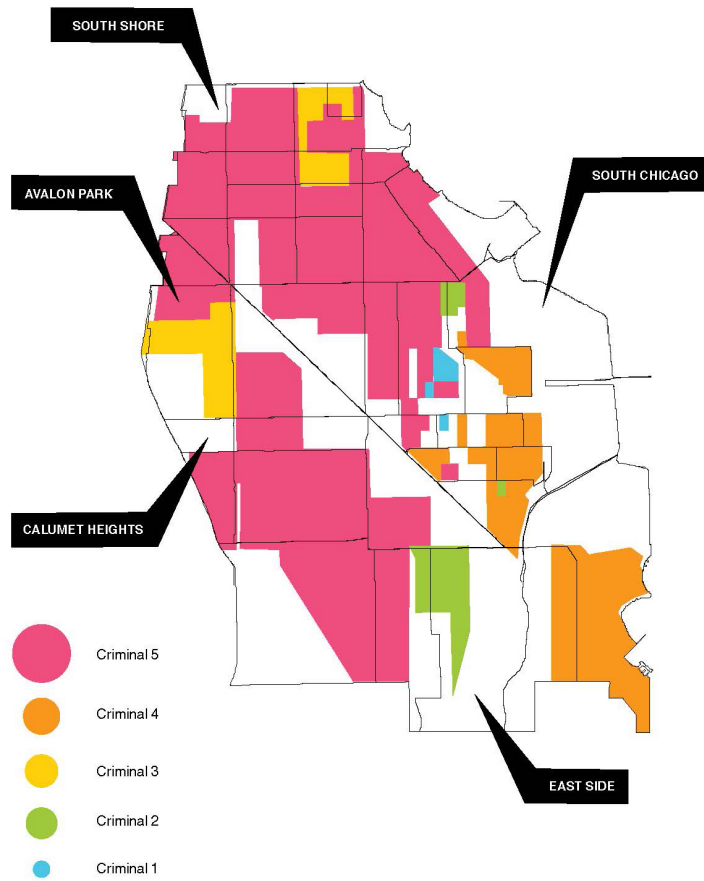
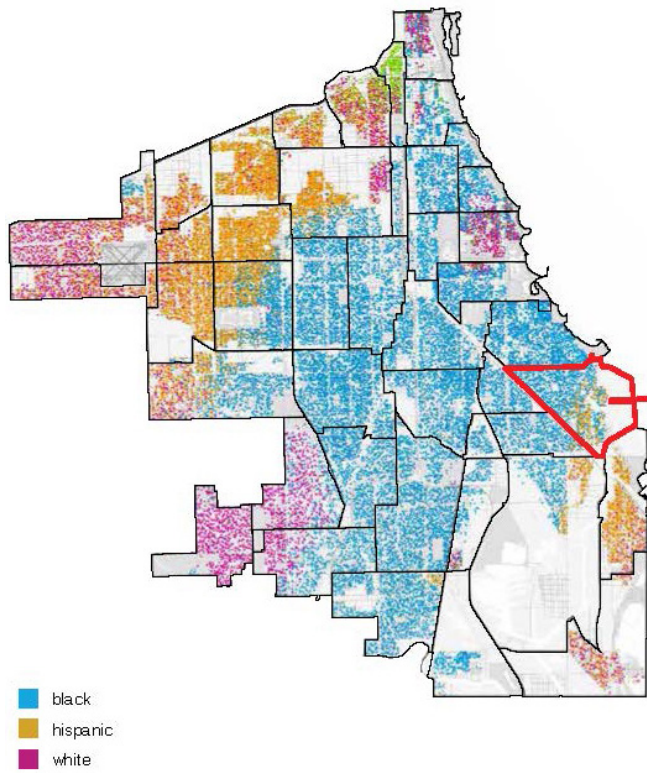


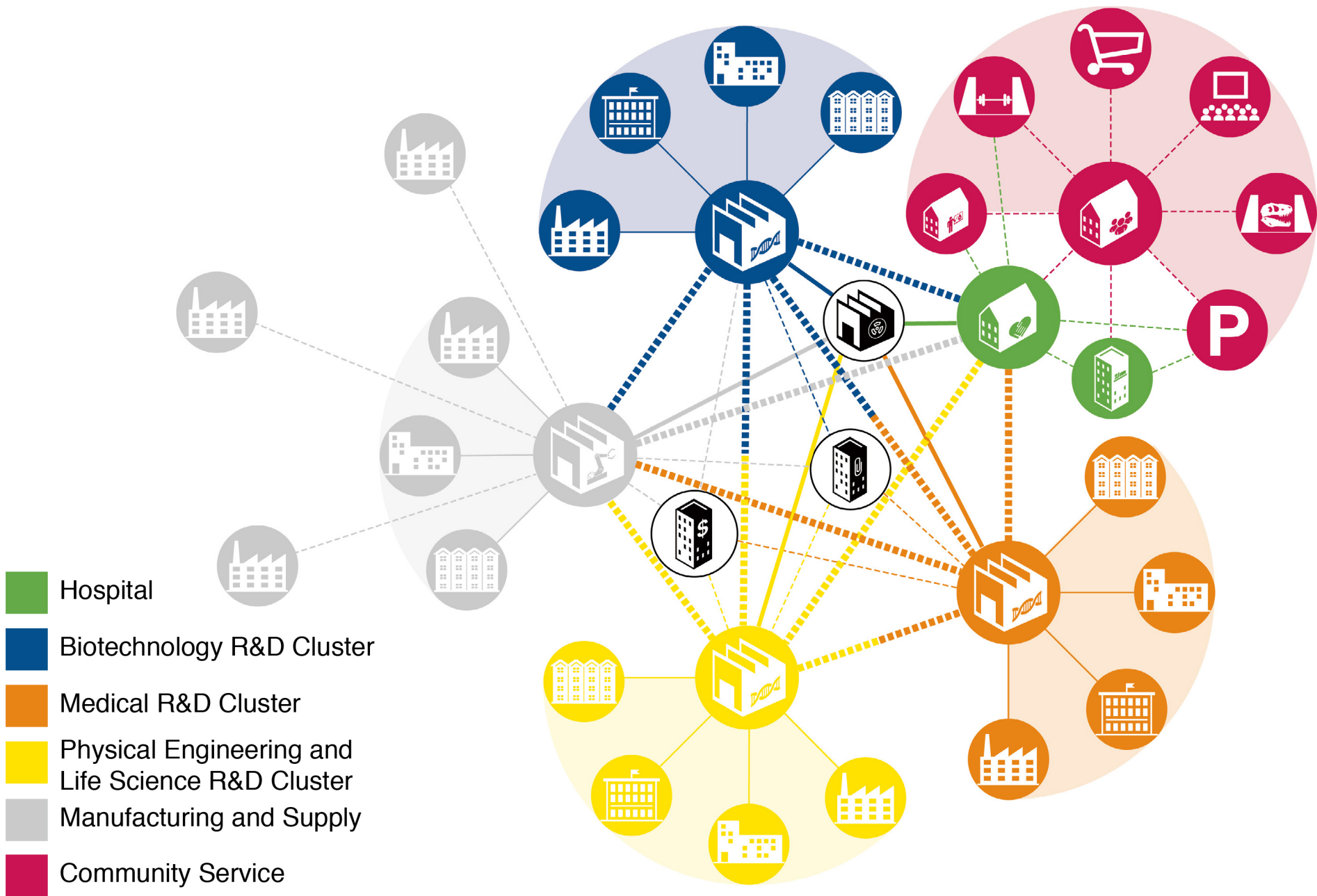
THE WALL

Complex Project Chicago Graduation Studio
Wenjia Wang 4244826



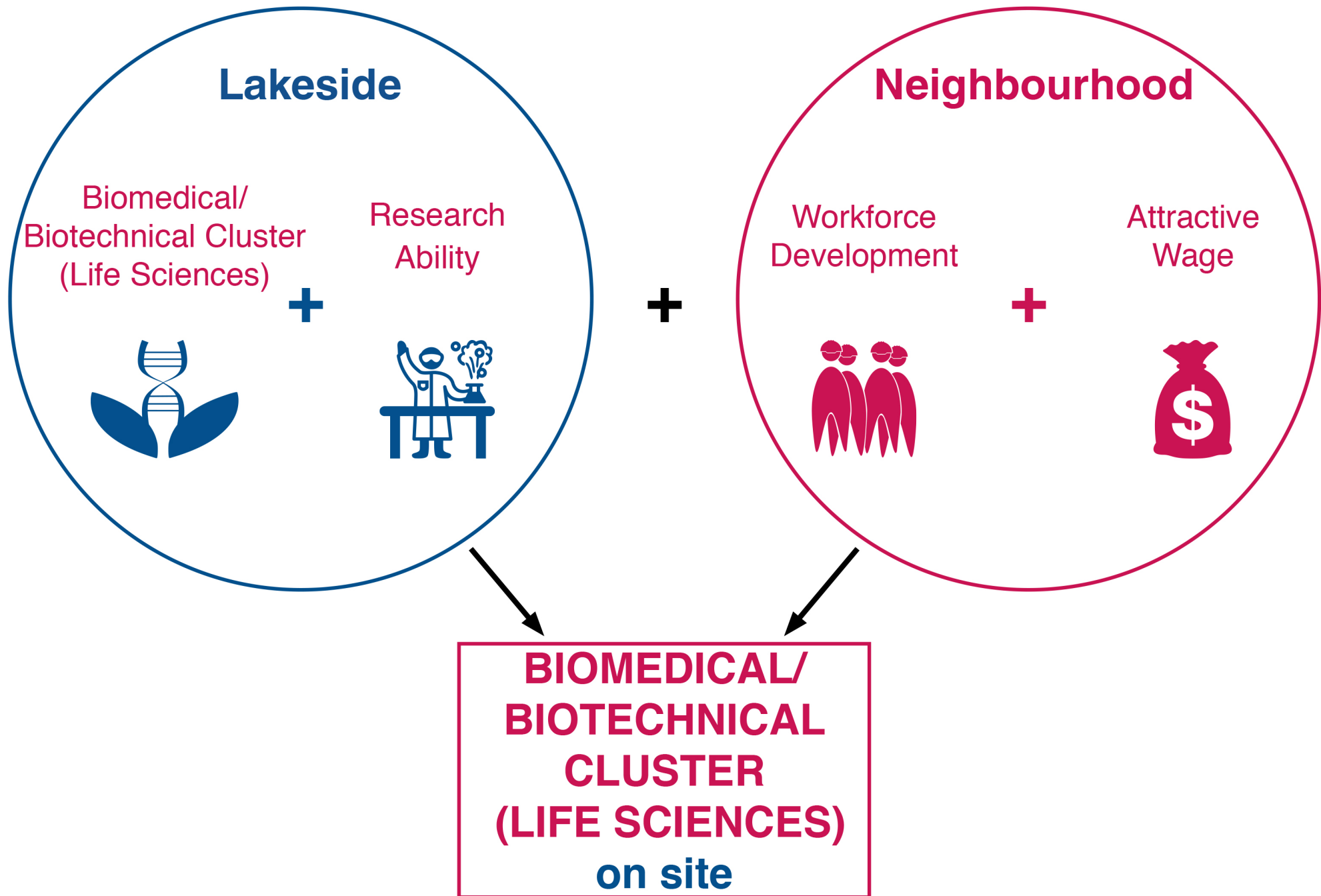








The site has a good lakeside view and even the downtown view which is the only vacancy area in Chicago.



Findings: Workforce of Biomedical/Biotechnical Cluster (Life Sciences) cluster, Chicago

Demand vs. Supply -- critical career shortages

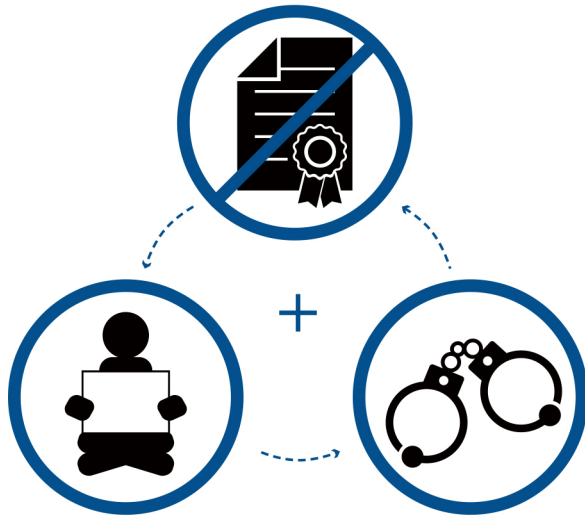
Occupation/ Occupational clusters	DEMAND	SUPPLY		SHORTAGE	
	2000-2010	2005	2013	2005	2013
Registered Nurses	6595	1600	1965	4995	4630
Licensed Practical Nurses	1385	380	518	1005	867
Technicians & Technologists	1390	583	847	807	543
Therapists	1847	267	590	1580	1257
Medical Records	2444	805	2228	1639	216
Certified Nursing Assistants	2778	2726	4891	52	2113



Low education

High unemployment

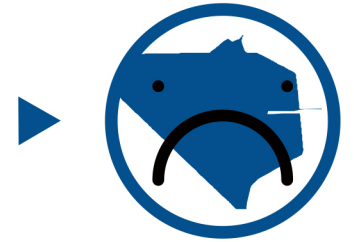
High crime rate



Poor Downtown Connection



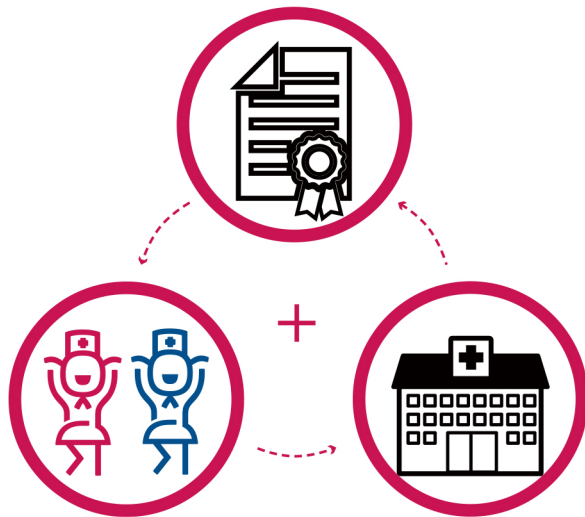
Disconnection to Lakeside



Educa improvement

Professional training

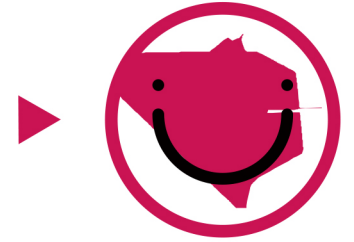
Workforce development

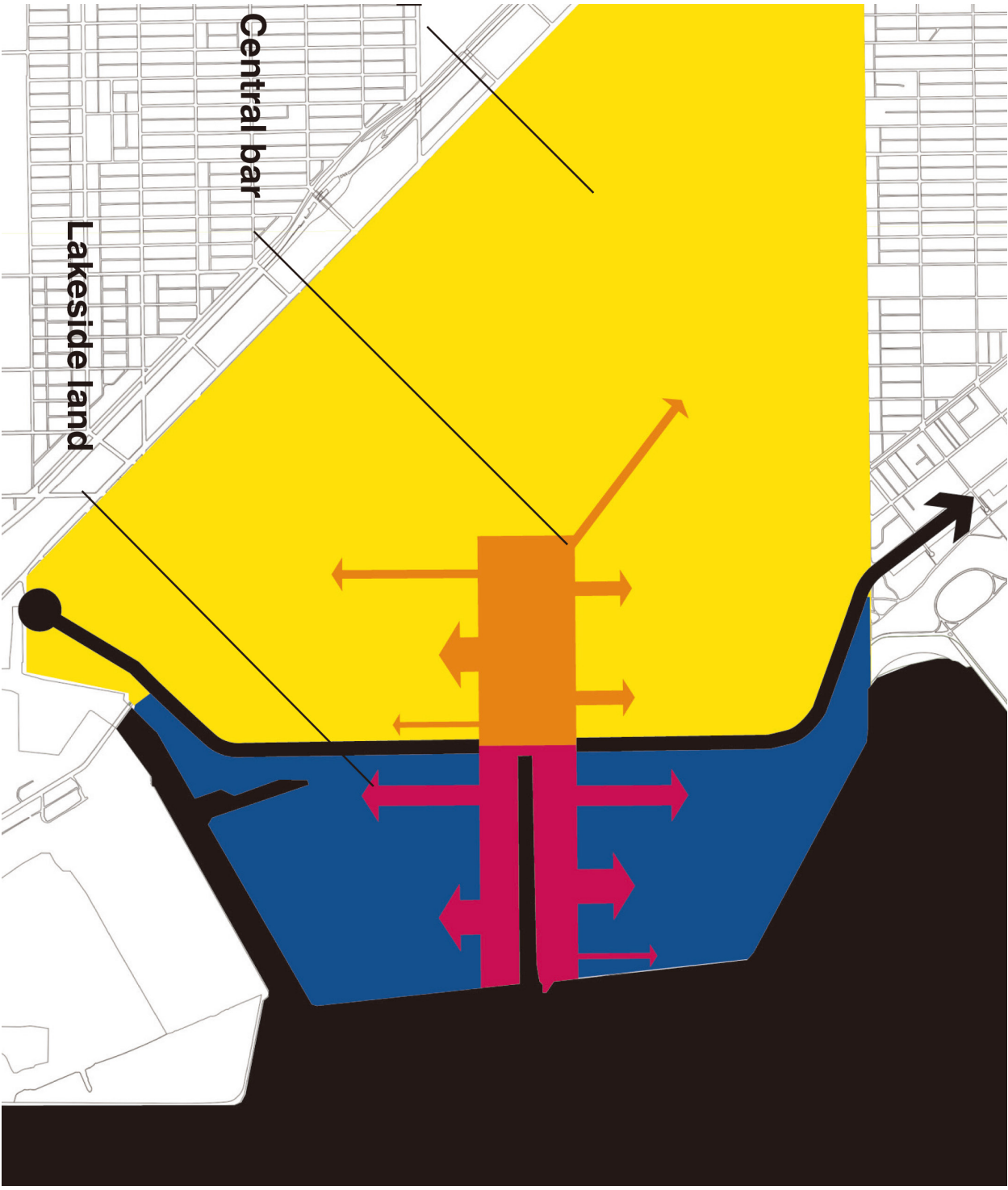


Convenient Transportation



Downtown Lake View



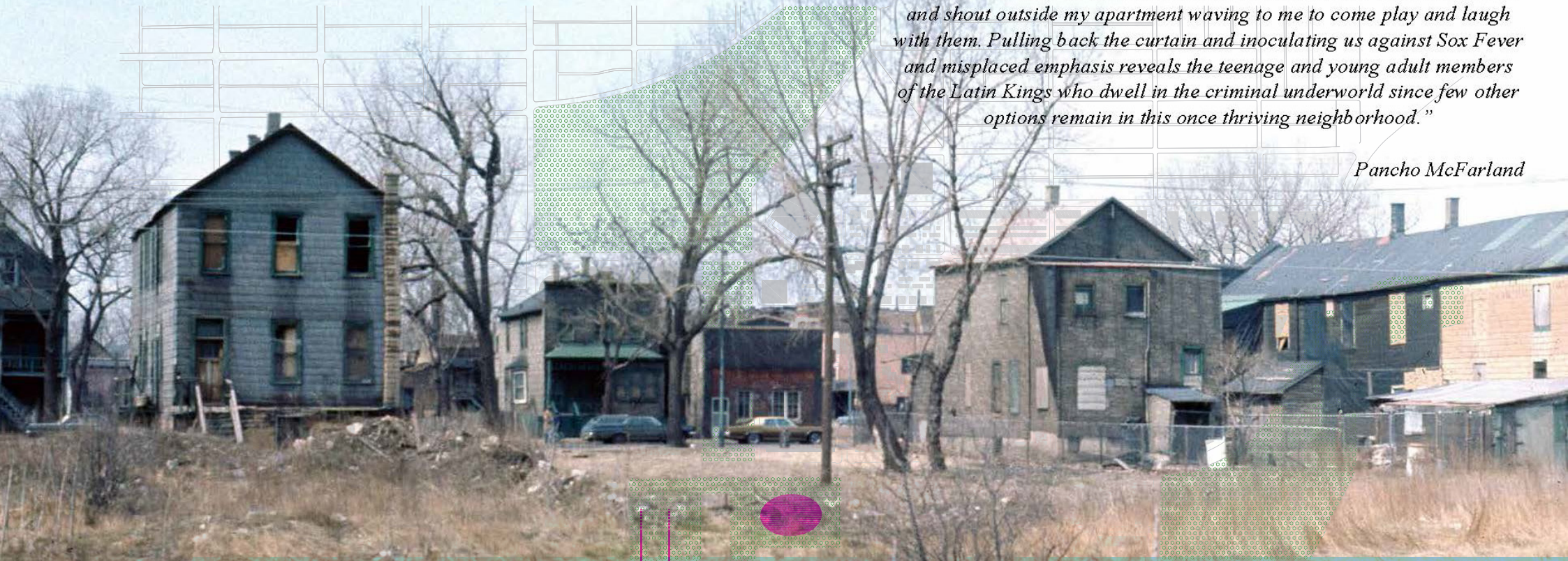


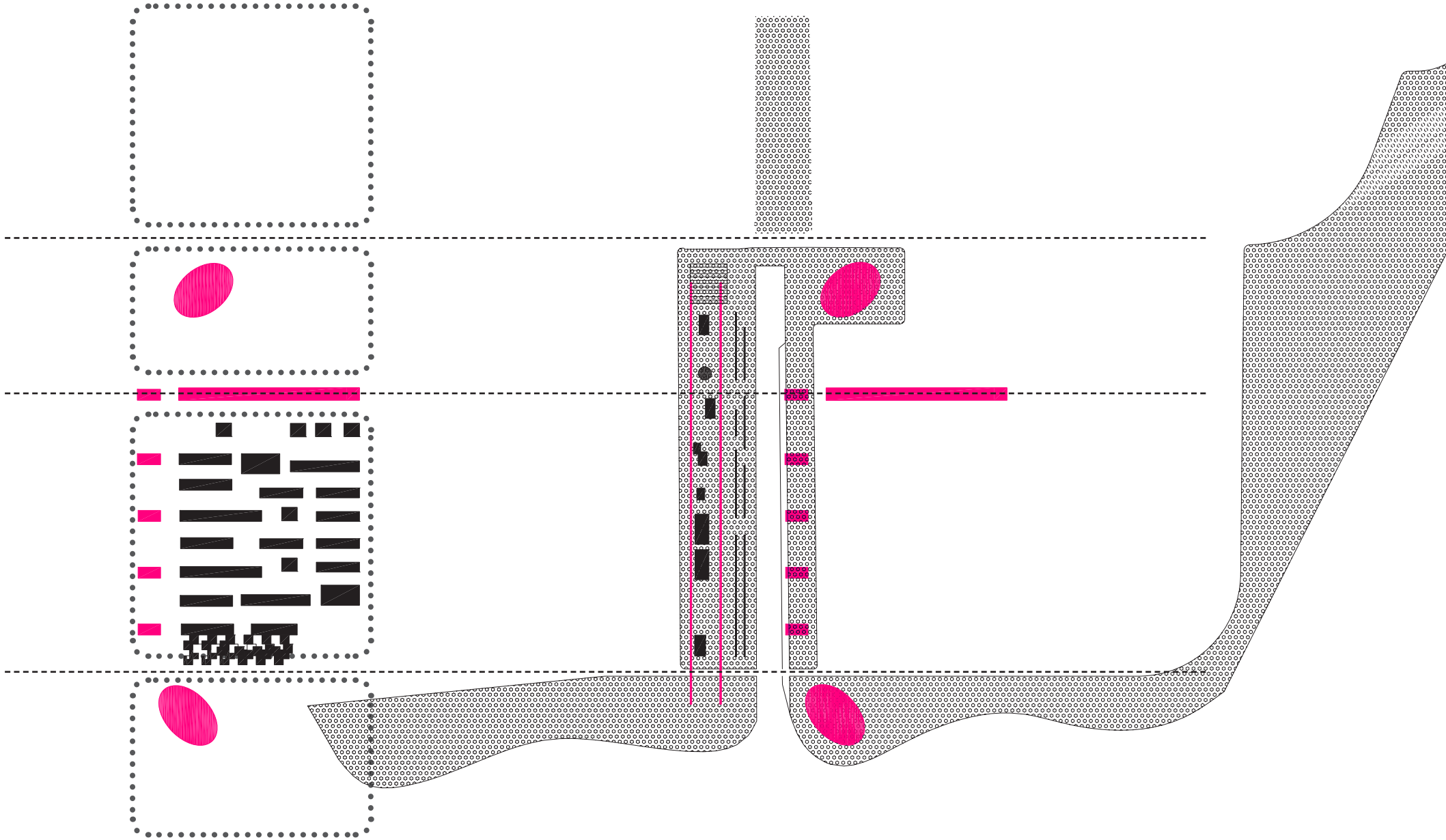


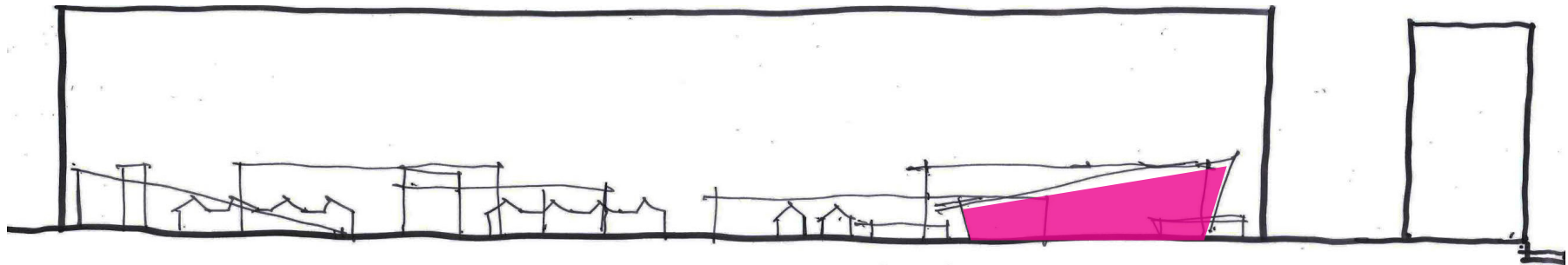
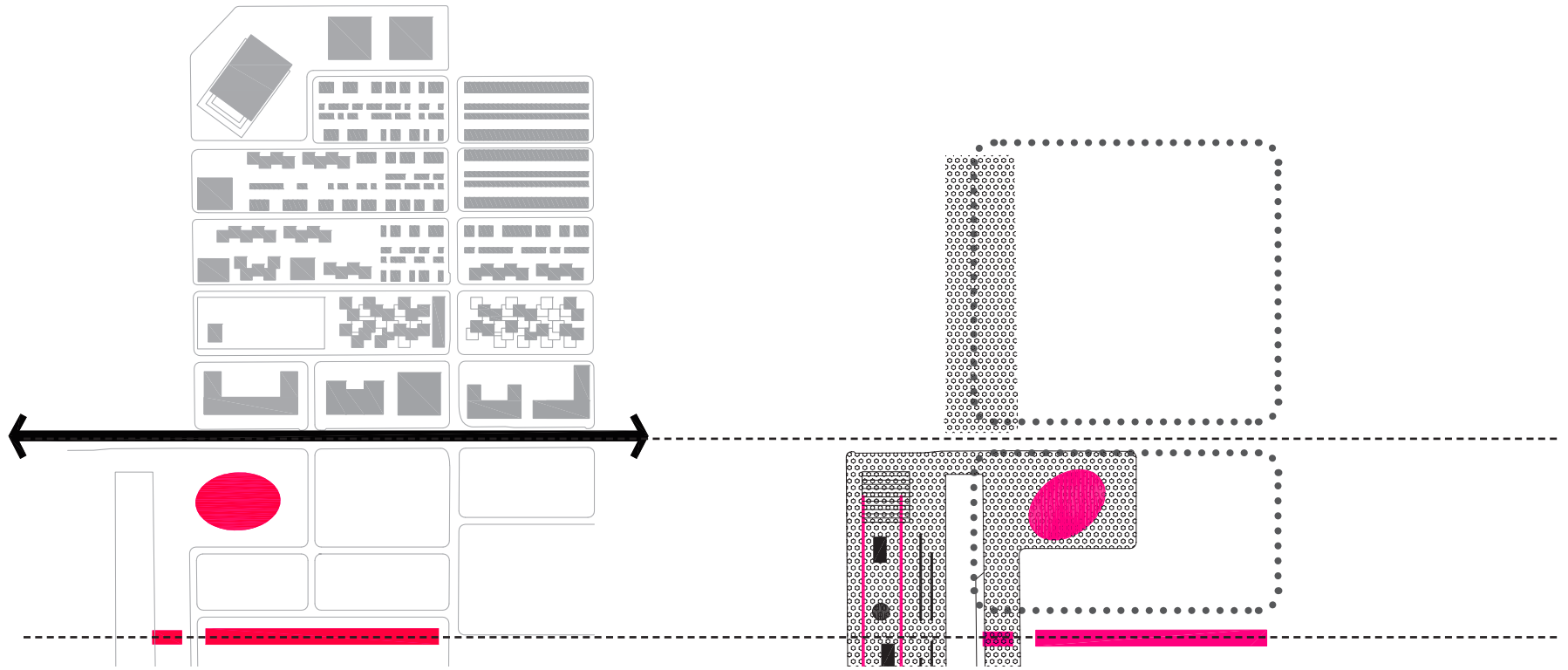
1:5000 Master Plan

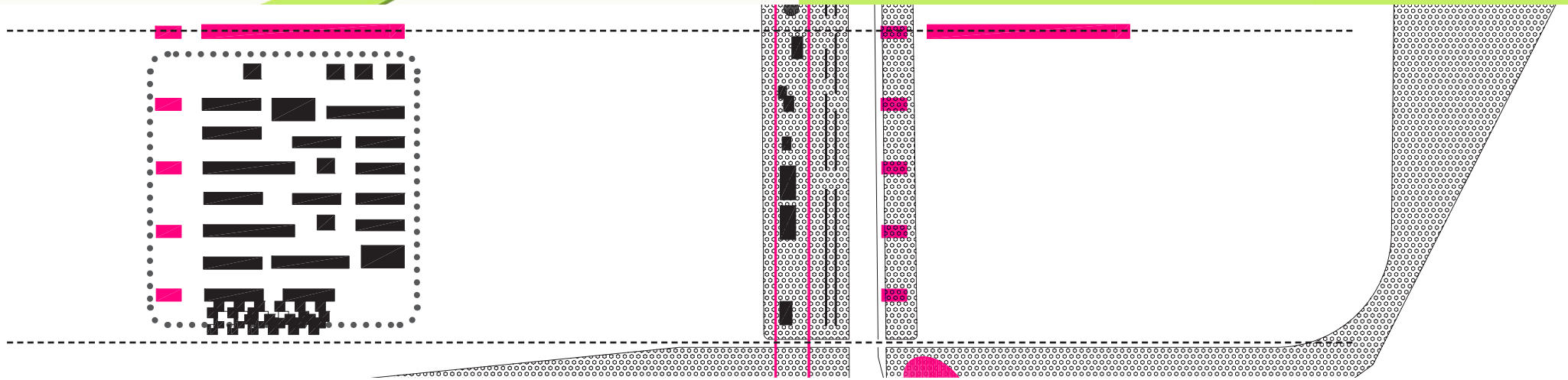
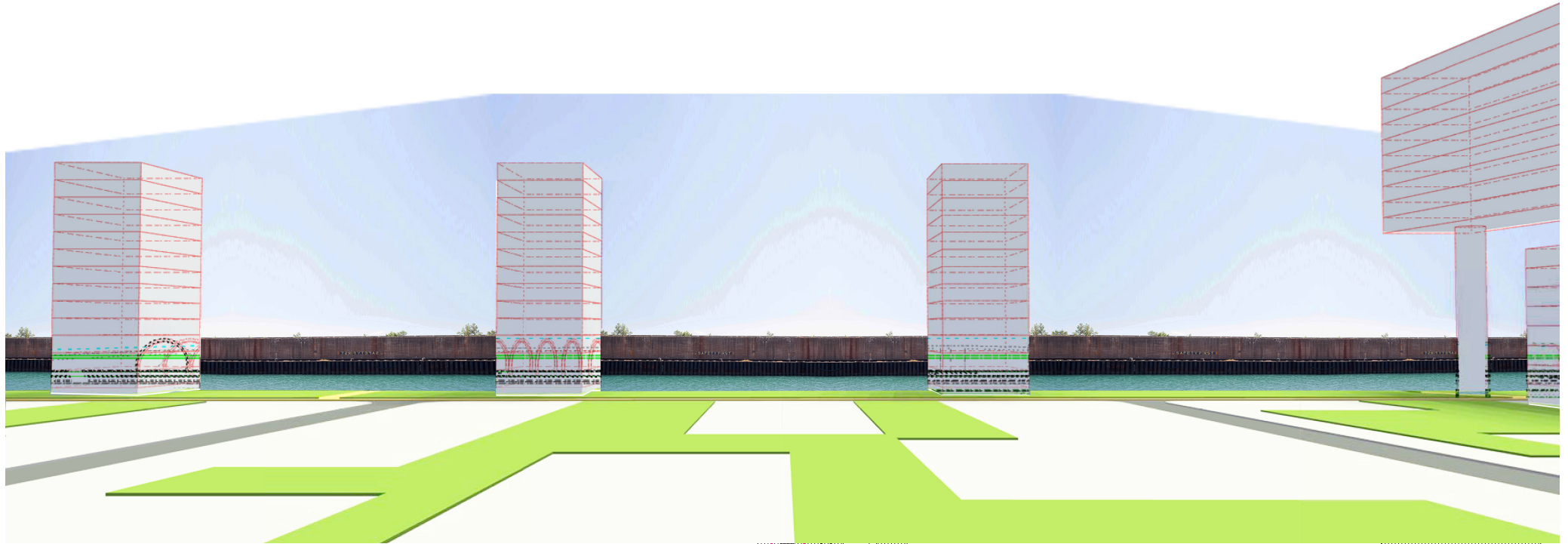
ment, you find Azeeina, a single mother of three, raising her children the best she can on her minimum wage job at a local supermarket. You also find the many impoverished, fatherless, curious, loving children that run and shout outside my apartment waving to me to come play and laugh with them. Pulling back the curtain and inoculating us against Sox Fever and misplaced emphasis reveals the teenage and young adult members of the Latin Kings who dwell in the criminal underworld since few other options remain in this once thriving neighborhood.”

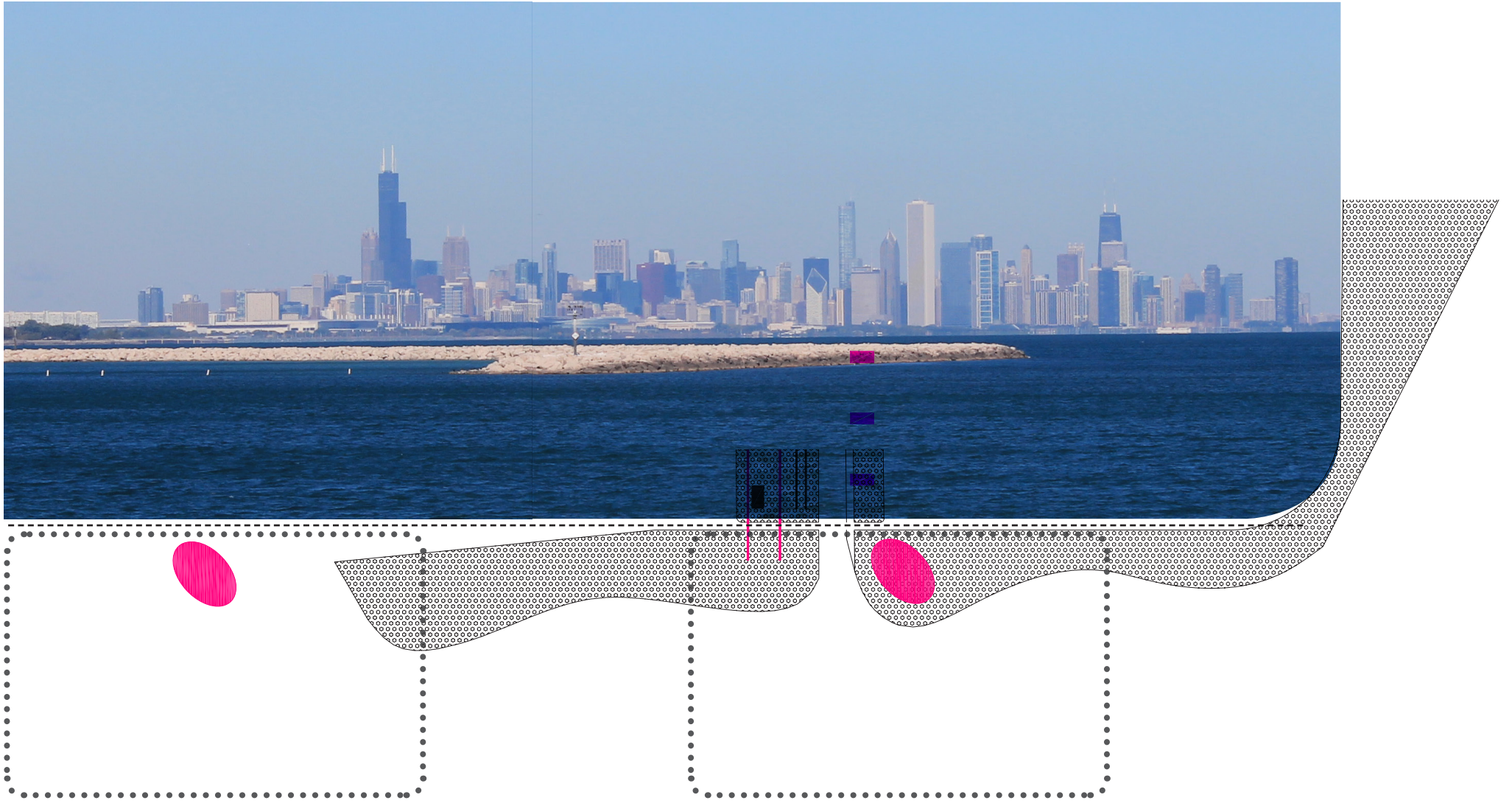
Pancho McFarland

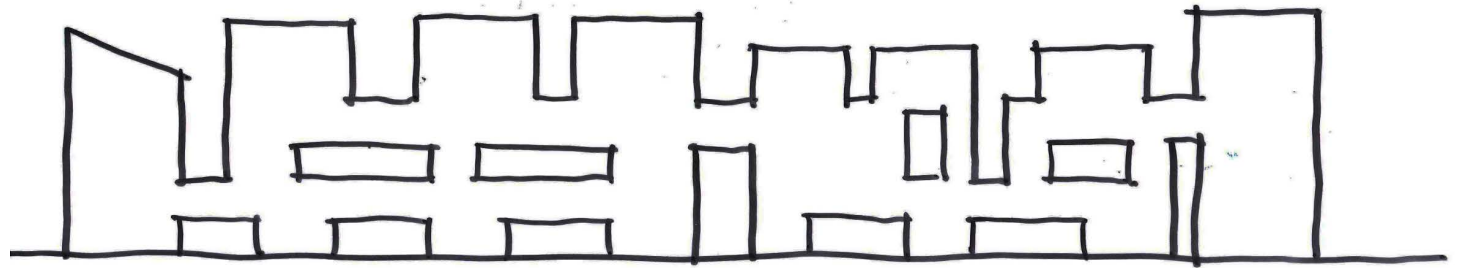
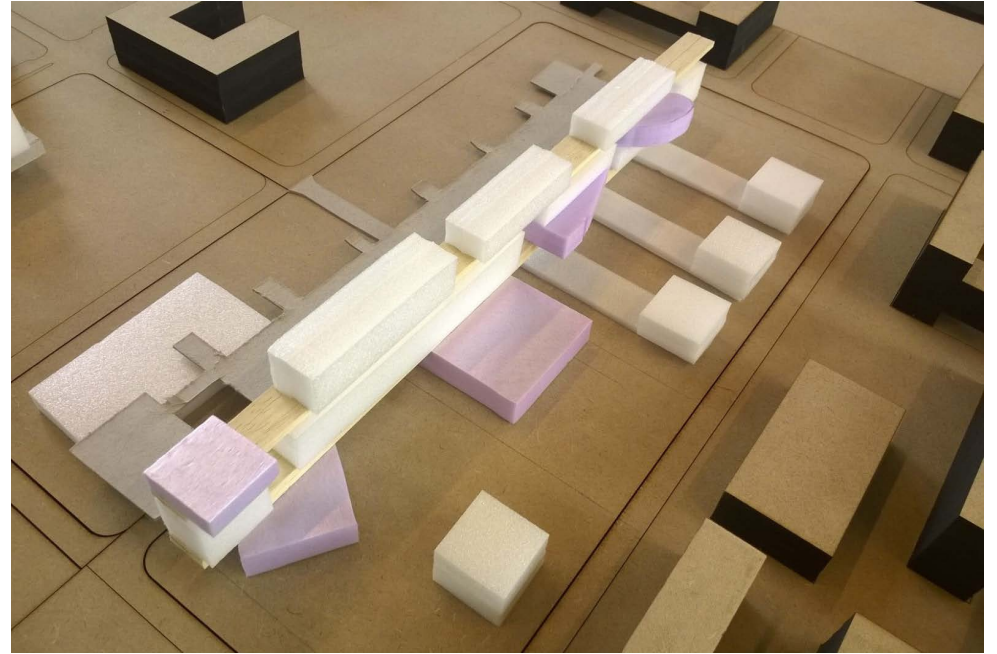
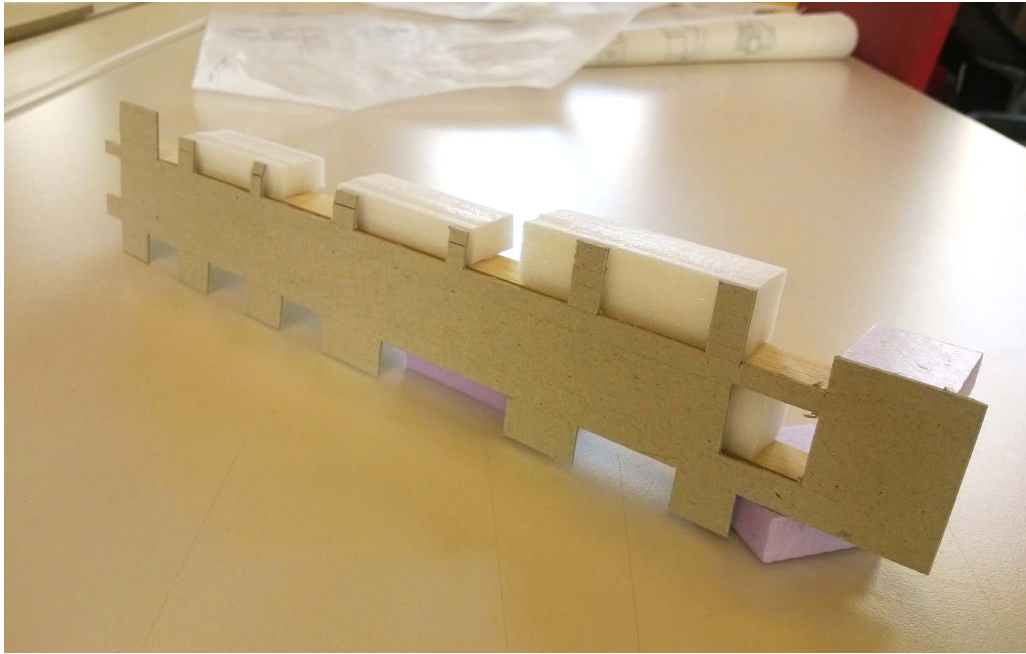








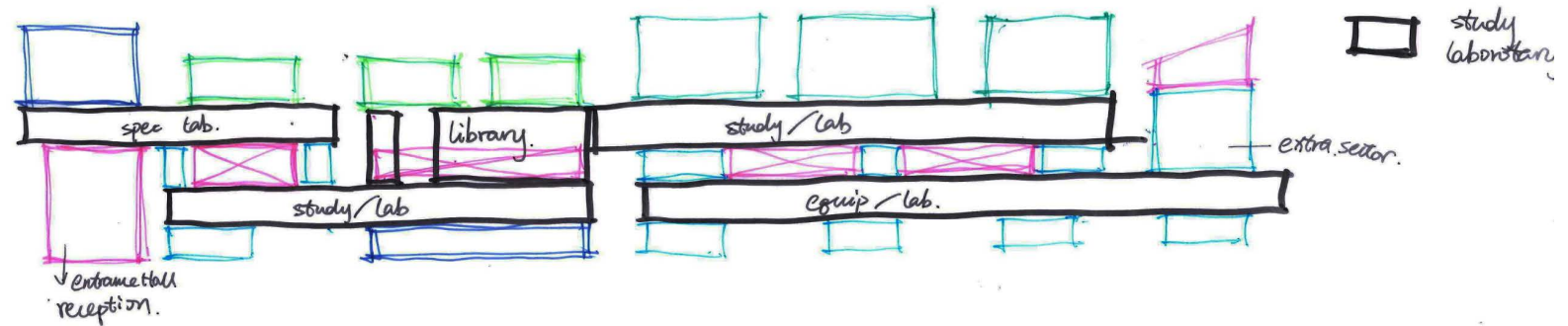




On the west, it is a 'WALL', flat, solid, unify

Programs to make a
super campus:

Nursing school &
Living city

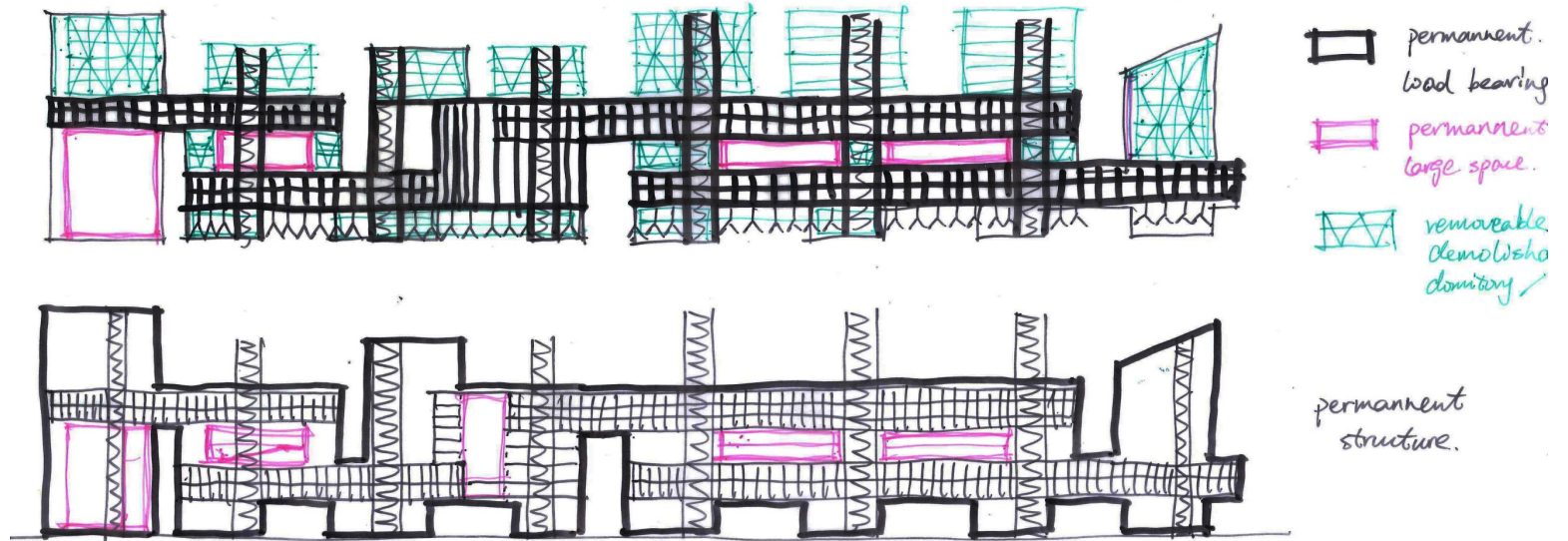


Structure:

Black: permanent
The WALL,
Vertical shaft,
Adaptable units + central
public pivot

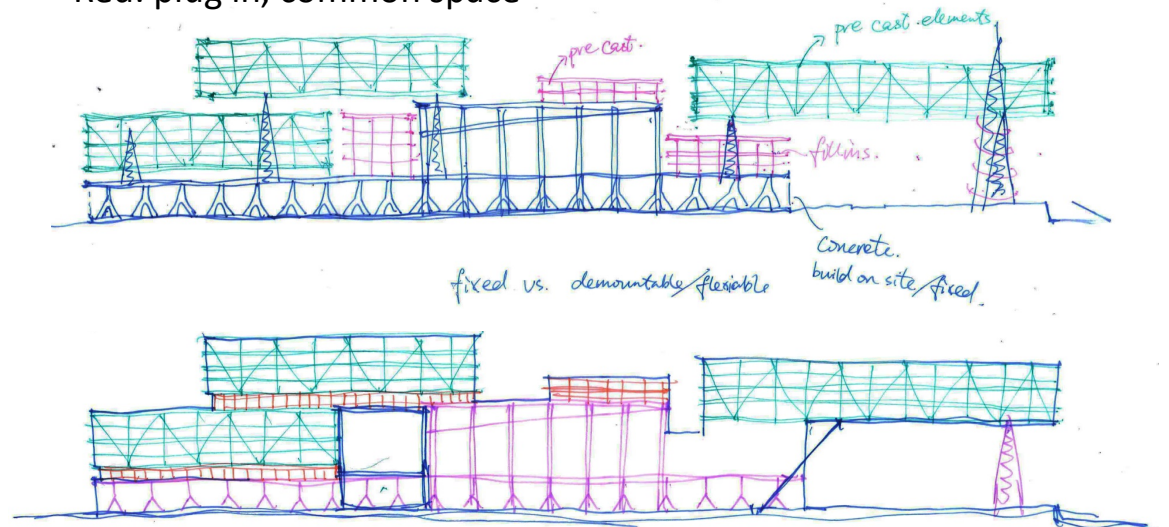
Red: permanent
Essential common space

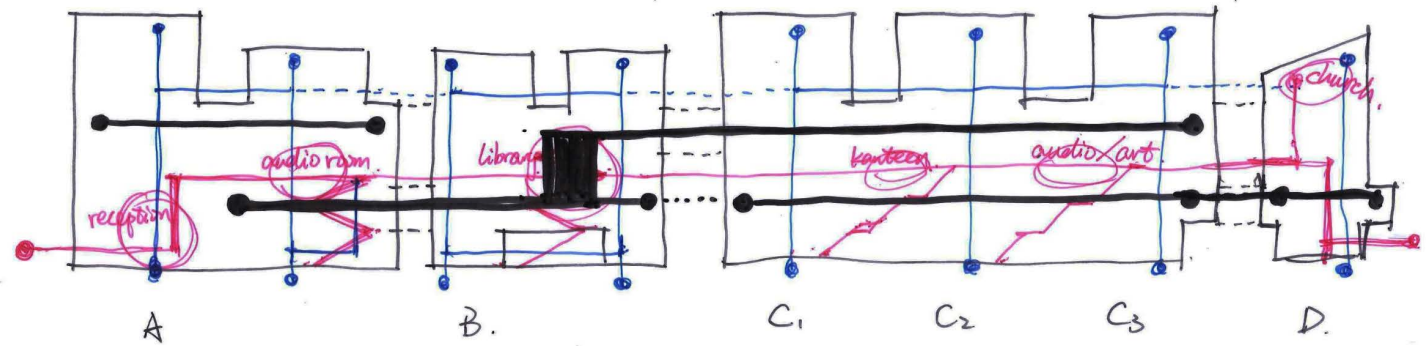
Green: removable
Dormitory,
Special laboratory
Ground floor program



Previous scheme:

Blue: permanent structure, basement, public
Green: demolish, classroom and dormitory, units
Red: plug in, common space

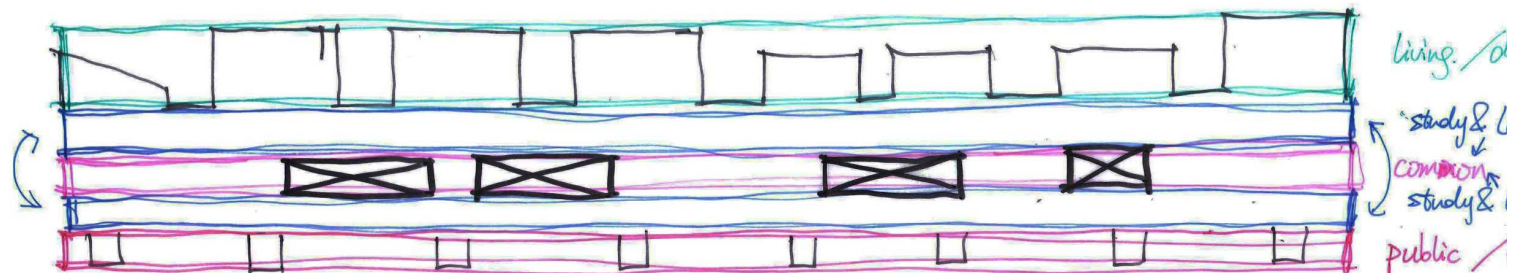


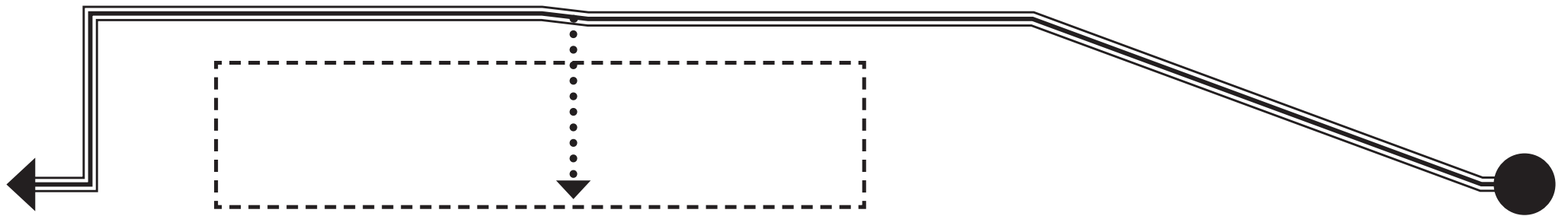
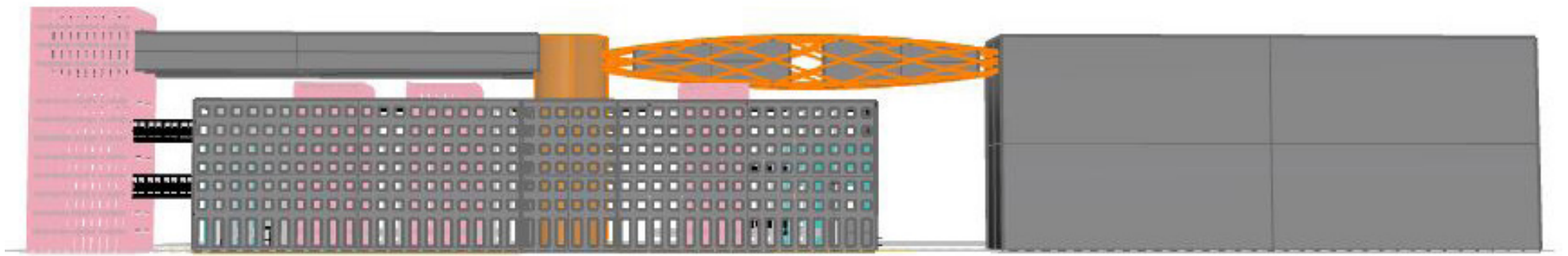


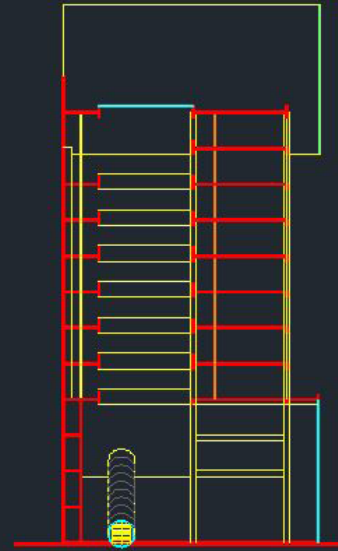
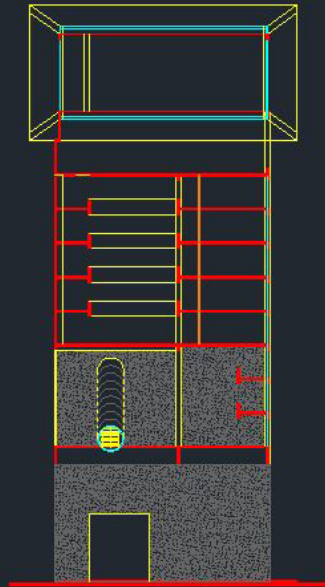
On the other hand, this typology naturally provides quick movement on the huge flat level and efficient connection from one to another, making this building 'one big functioning campus'



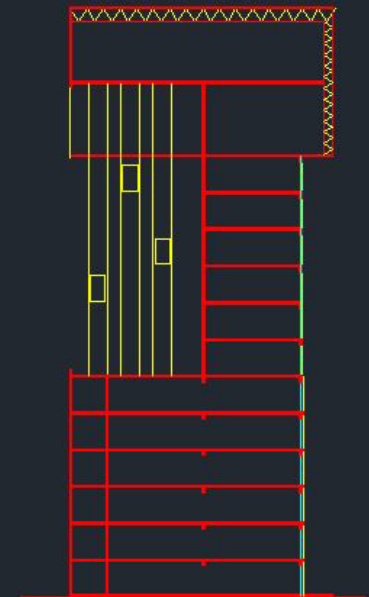
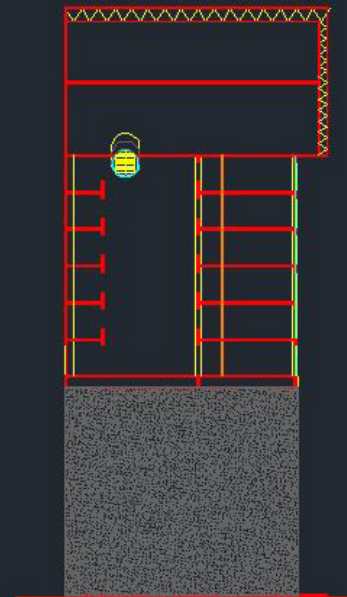
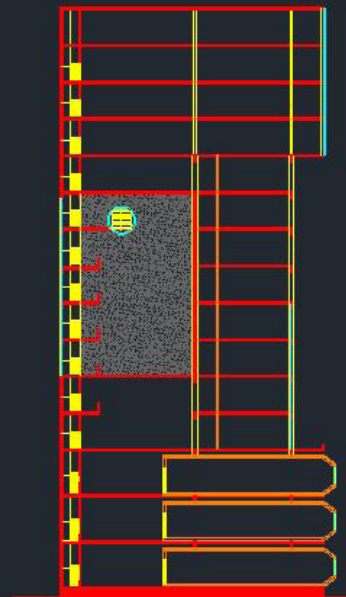
Ground level puts sports program with rehabilitation services as the most public; Essential common space (canteen, library, art, meeting, auditorium) is put as the 'void' on the level above the surrounding; Living space are put on top, its unit nature create the character of a city's skyline.

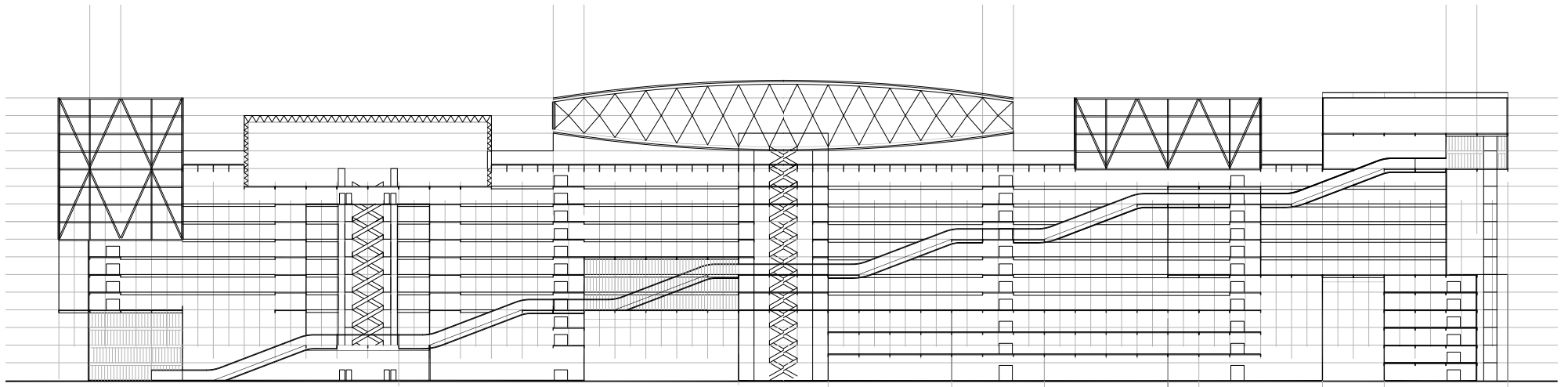
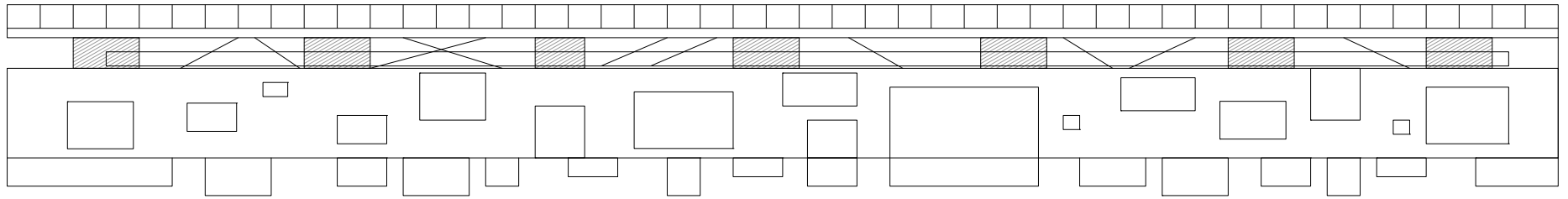




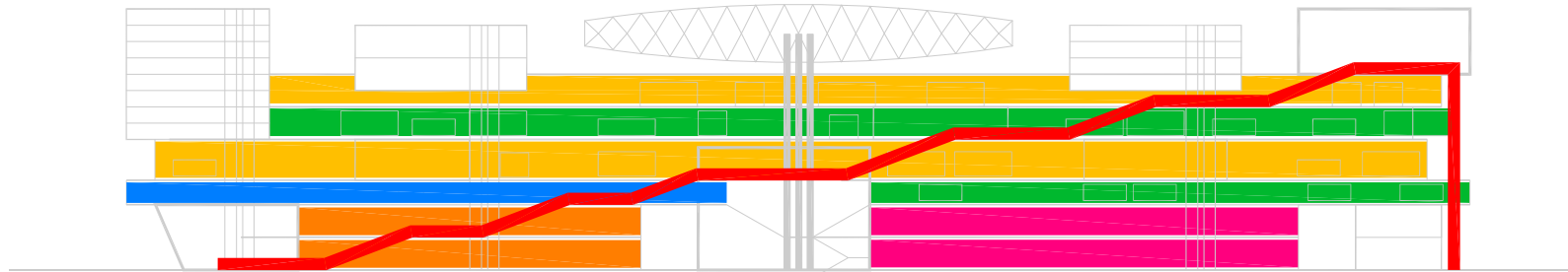


These set of cross section were used to investigate the shape, proportion and quality of space inside the building. At this stage, the building was clearly divided in three vertically. And horizontally, it consist of a main volume on the east, a volume of wall on the west, and a space for the routing in the middle. But the definition of the space on the east and the west is still unclear. The dimension also need to be adjusted according to what 's happening in these space.





- education platform
- activity platform
- healthcare experiencing platform
- commercial platform
- library platform



routing with different platforms

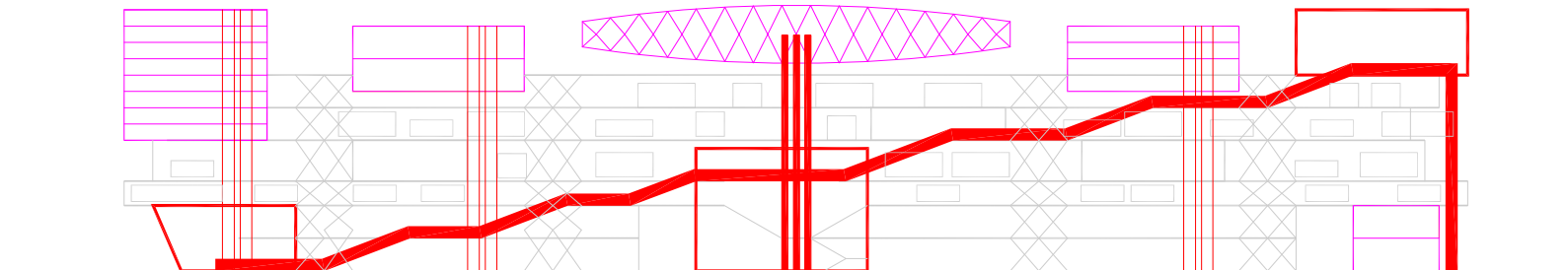
Company House

Exhibition House

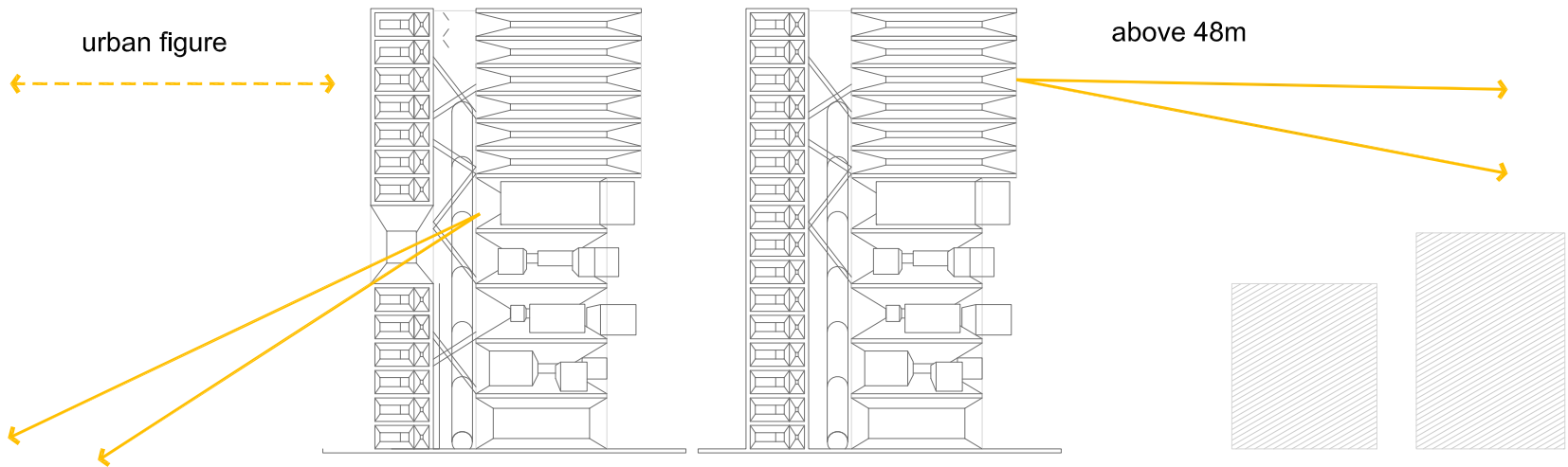
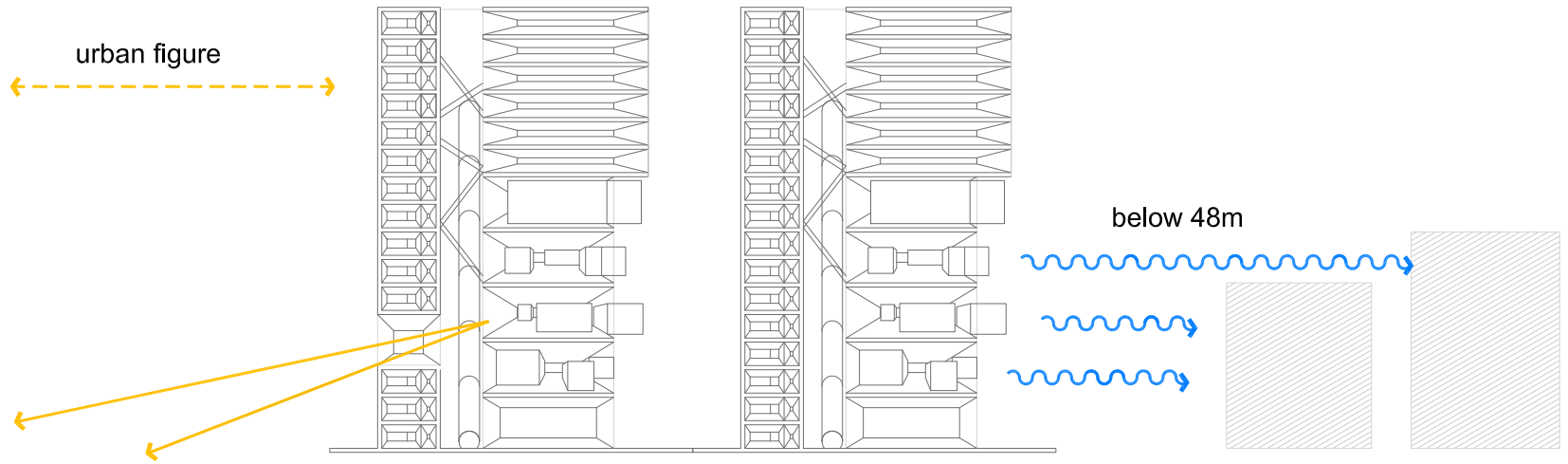
Conference House

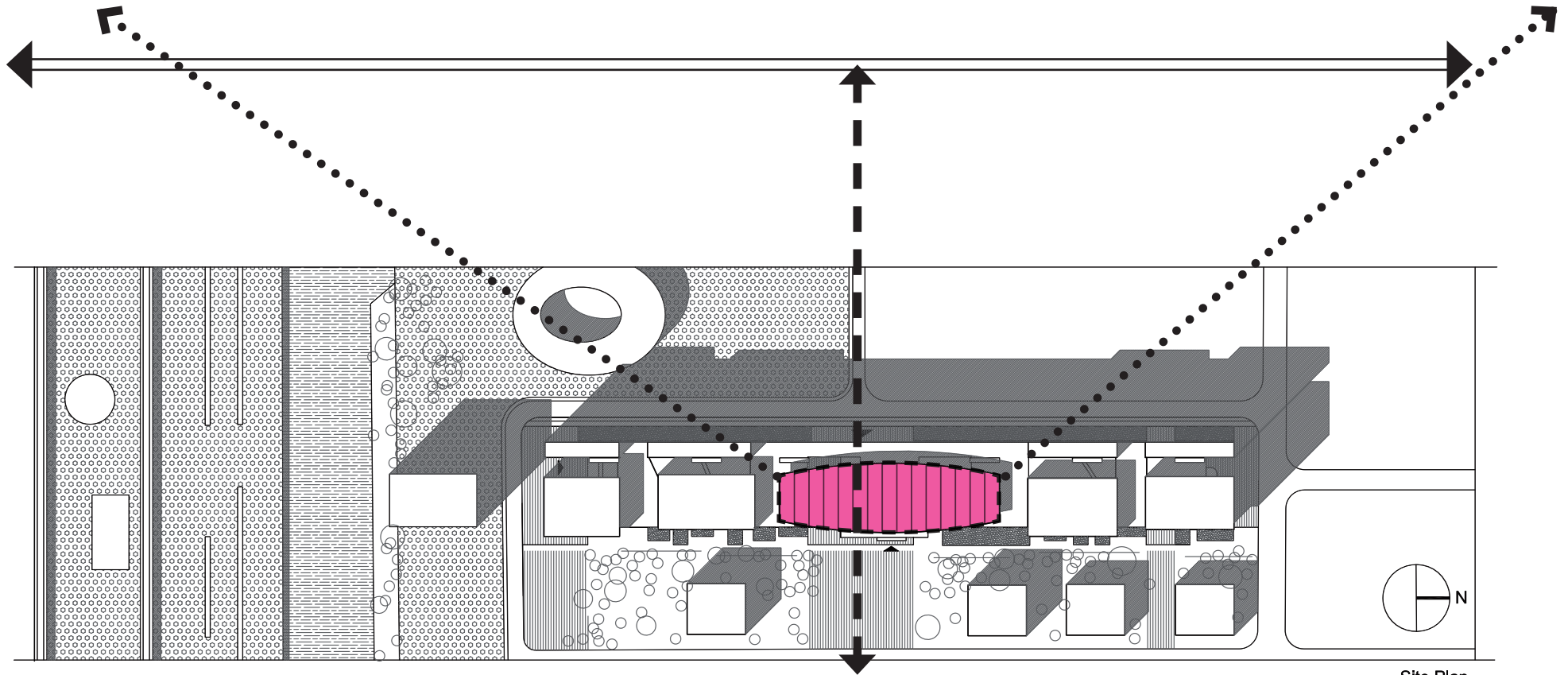
Institution House

Chapel

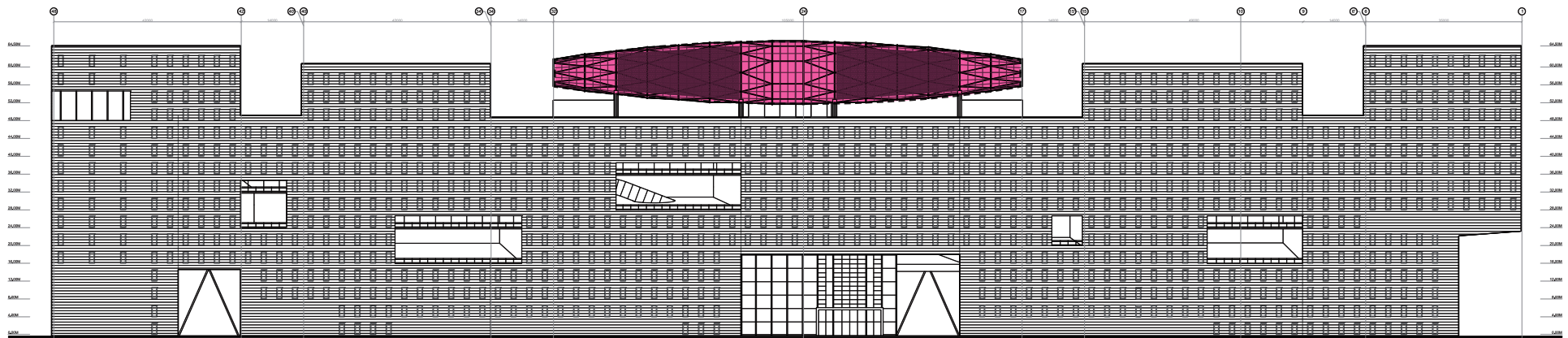


routing with entrance & special programs

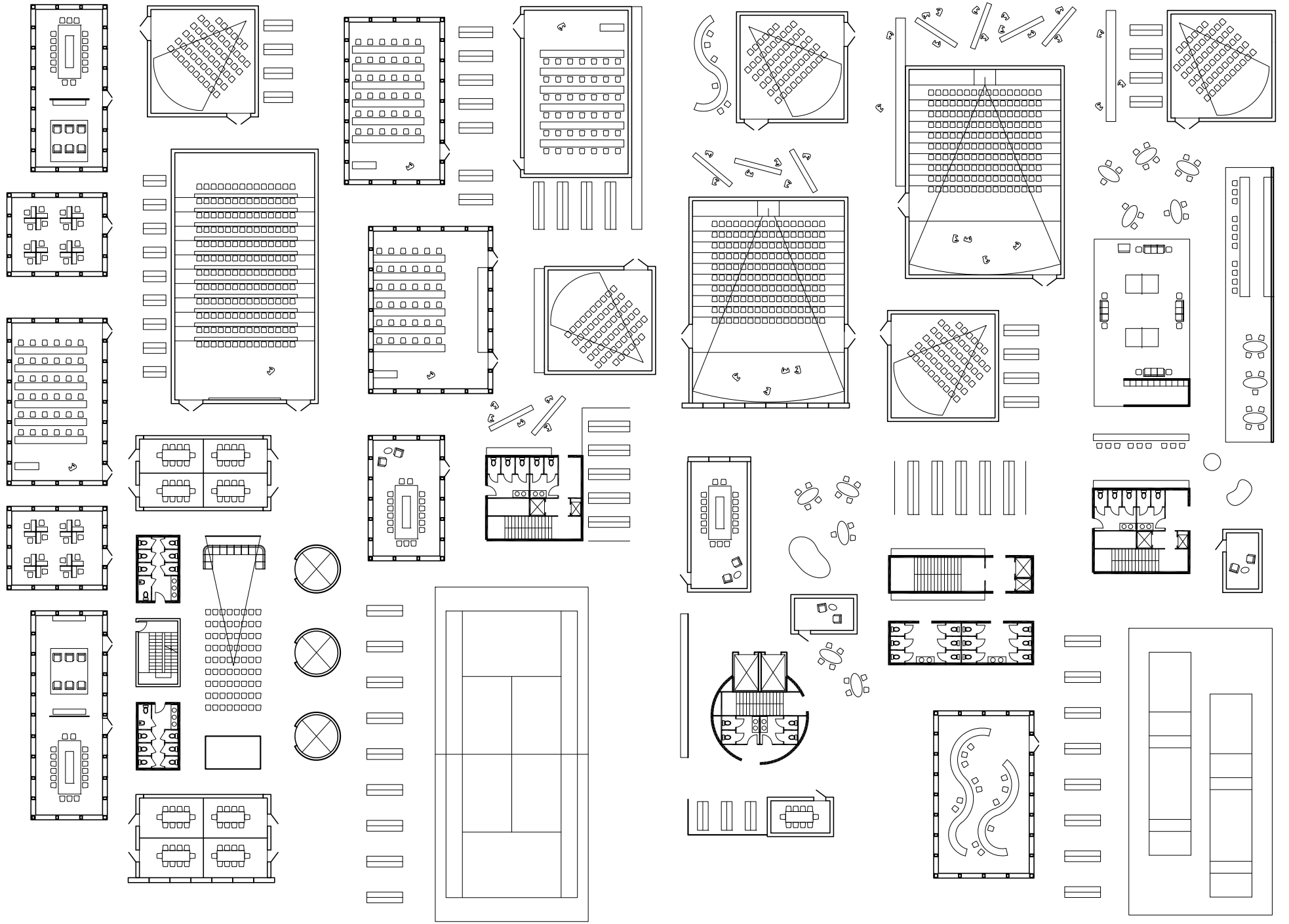


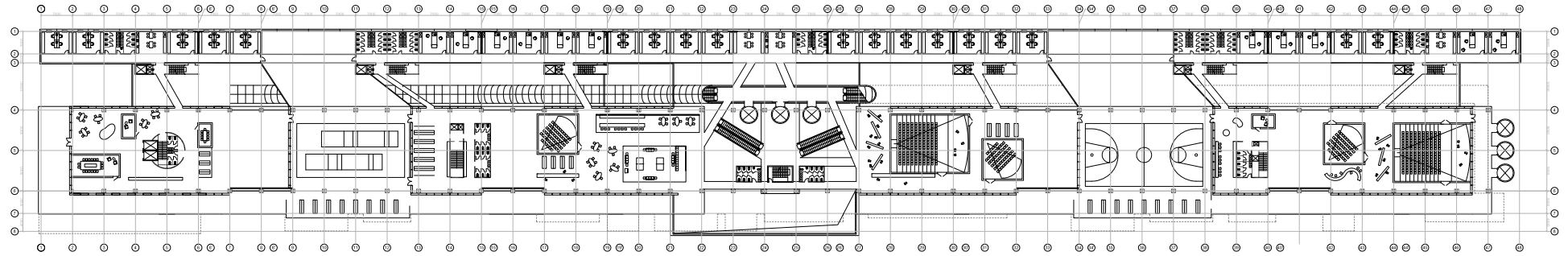


Site Plan

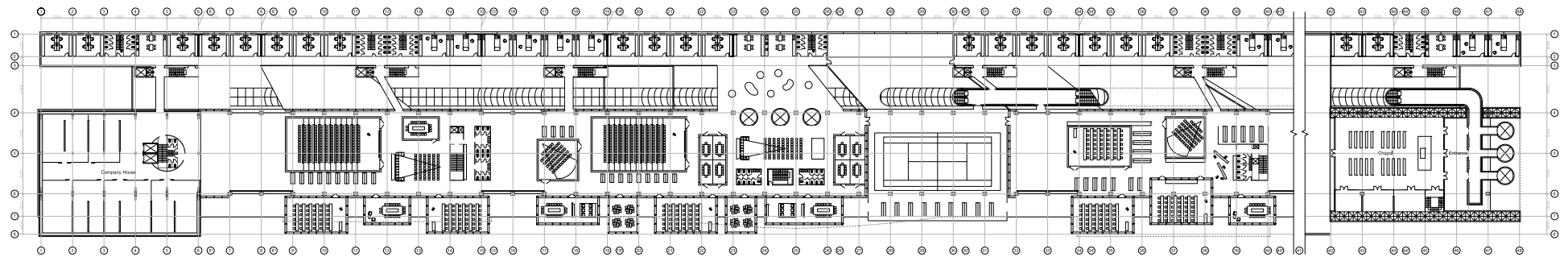


1:200 West Facade - The Wall



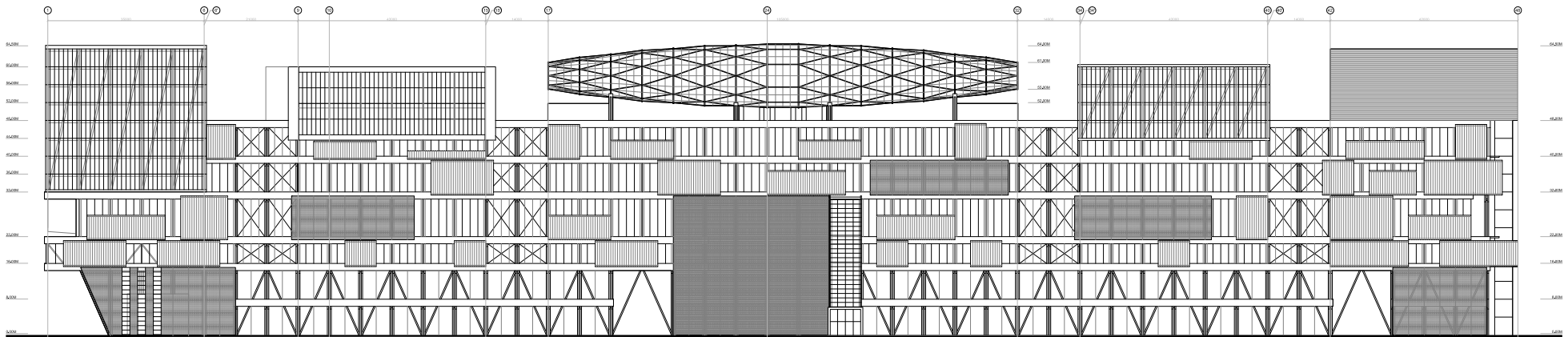


Activity Platform +22.00

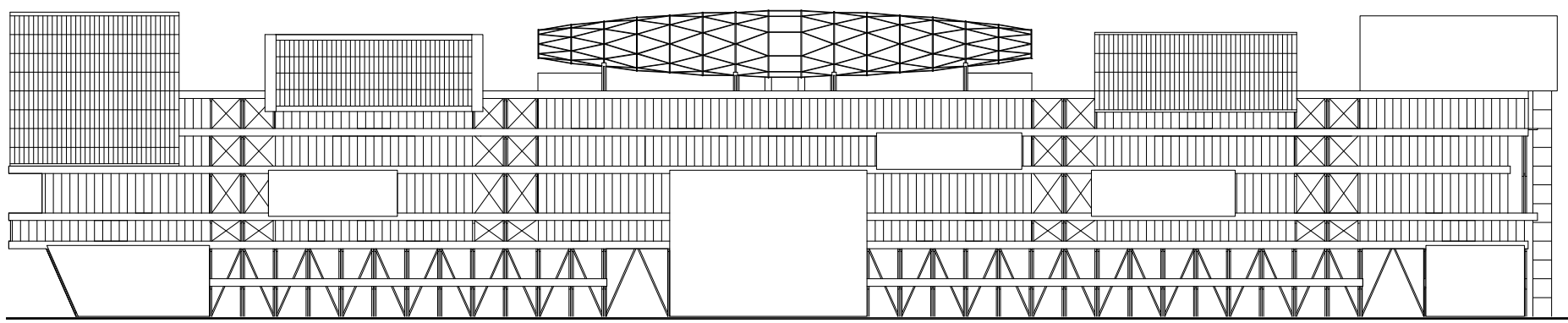


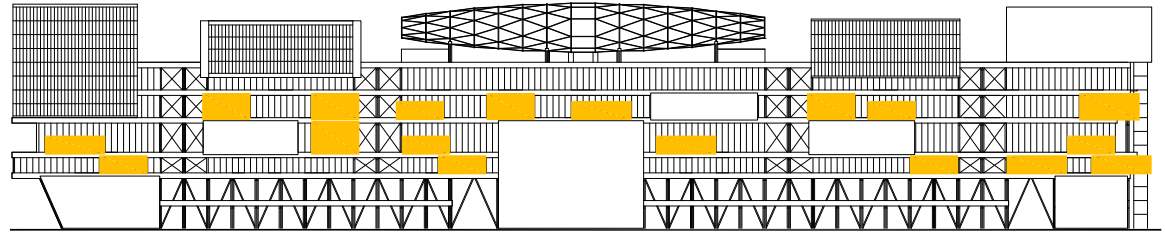
8th Floor Level / Teaching Platform +32.00

Education Platform +48.00

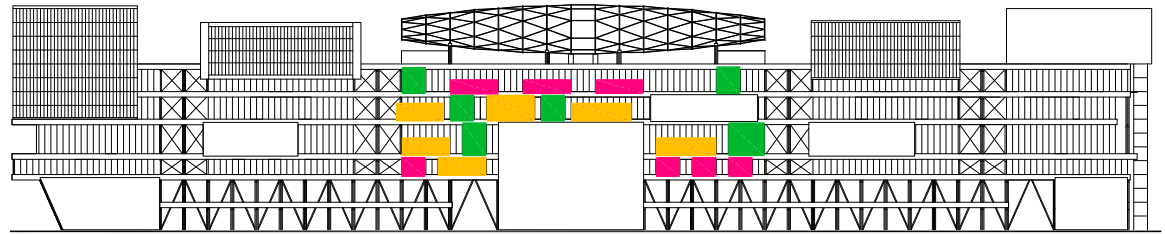


East Facade - Adaptation

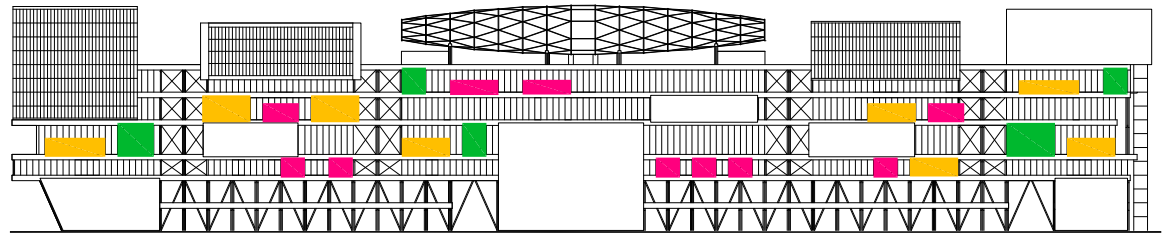




when in short of large rooms

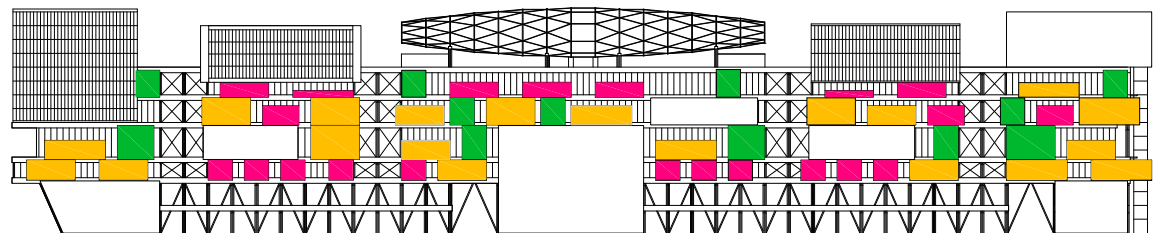


during events in special sections



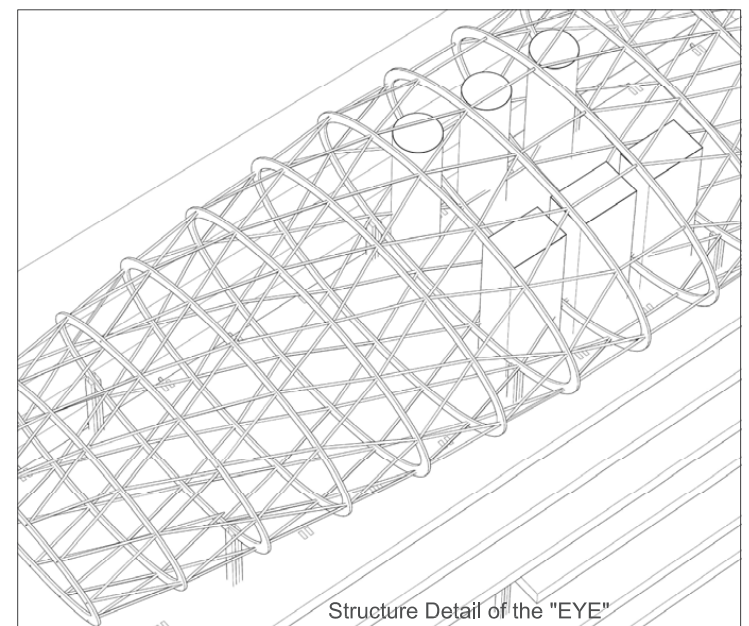
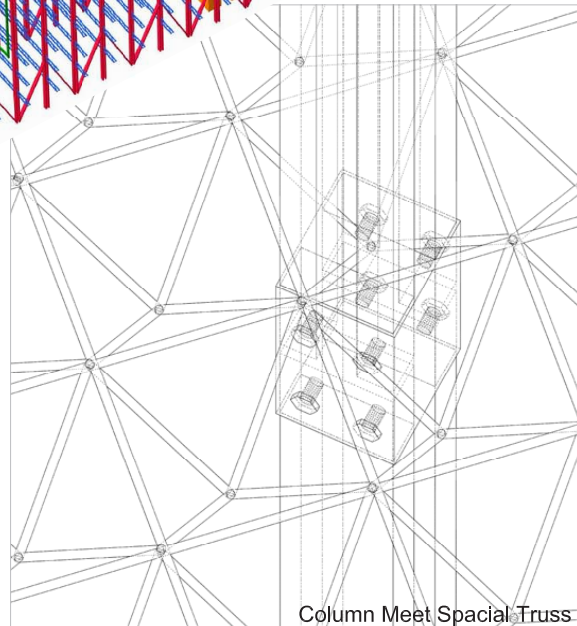
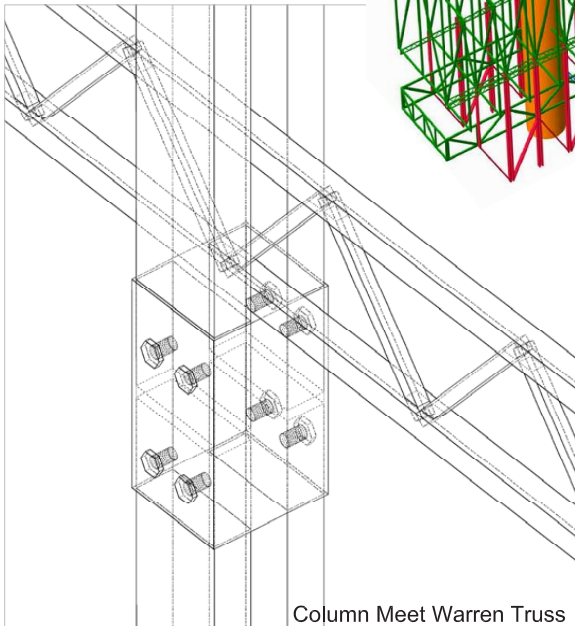
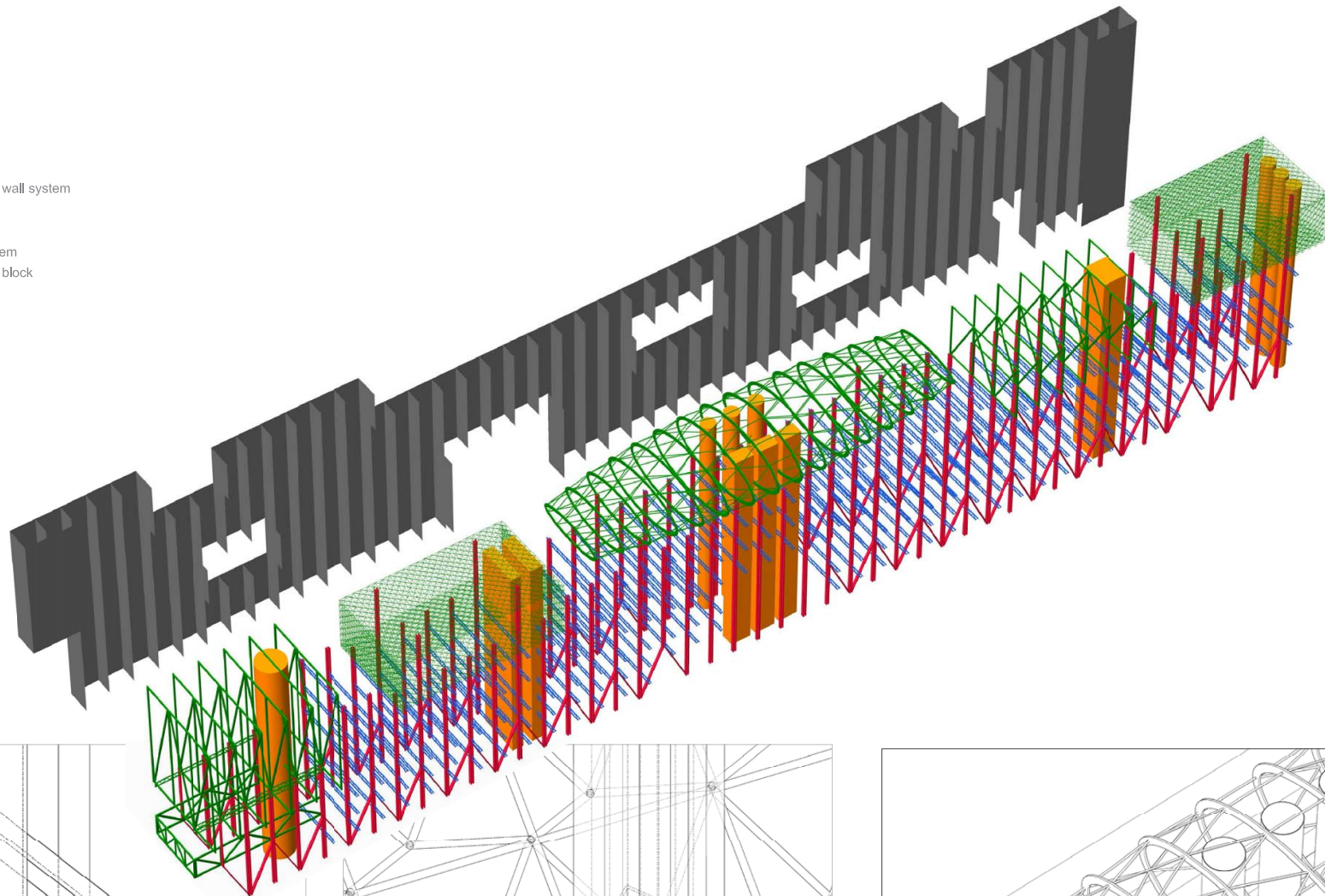
function in small groups

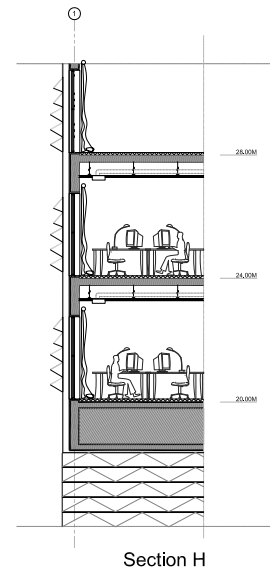
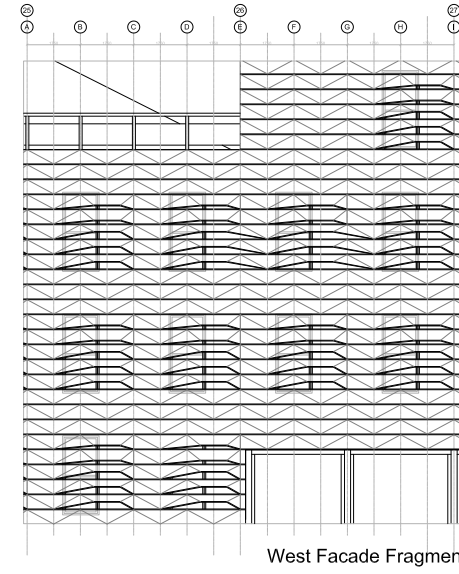
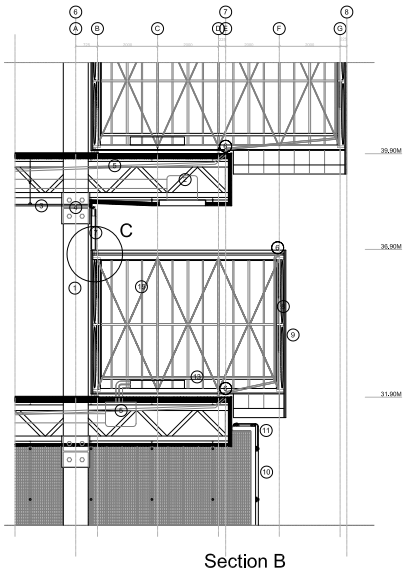
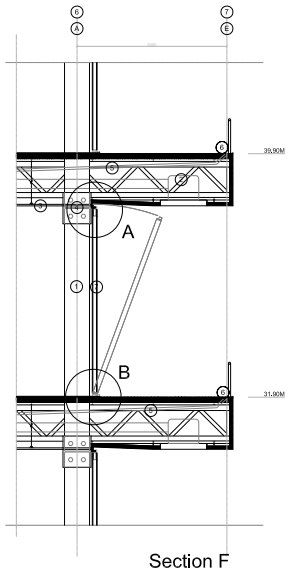
- larger rooms
- smaller rooms
- pavilions
semi climatical
controlled



fully installed

- concrete load bearing wall system
- steel column
- warren truss
- multiple structure system
- concrete load bearing block





- 1 steel column
- 2 warren truss
- 3 gypsum ceiling board
- 4 column joint
- 5 drain pipe
- 6 floor drain
- 7 tempered glass
- 8 polymer insulation filling
- 9 polyester board
- 10 wire netting
- 11 preshaped steel panel
- 12 steel beam
- 13 secondary polywood deck
- 14 aluminum panel track
- 15 aluminum glazing frame
- 16 rectangular steel beam 240X240
- 17 I beam steel 195X165
- 18 I beam steel 125X150
- 19 steel veneer
- 20 round steel d 100
- 21 insulation foam
- 22 water proof layer
- 23 surface layer
- 24 plastic ceiling panel
- 25 preshaped steel panel cast concrete on site
- 26 self-leveling insulation
- 27 damping layer
- 28 floor surface layer
- 29 polywood board
- 30 rectangular steel beam 240X150
- 31 diagonal bracing beam 60X60

EPILOGUE

