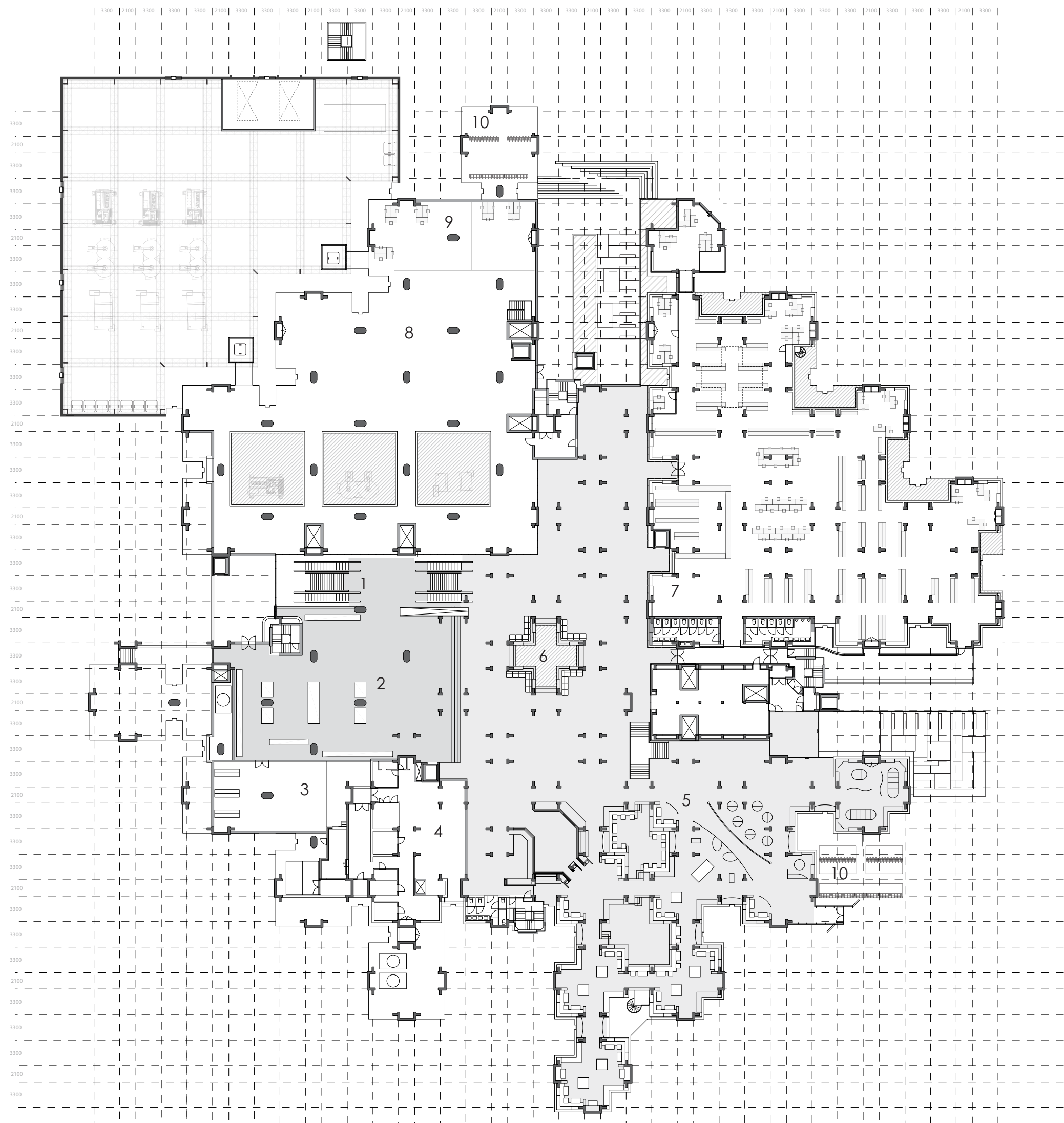


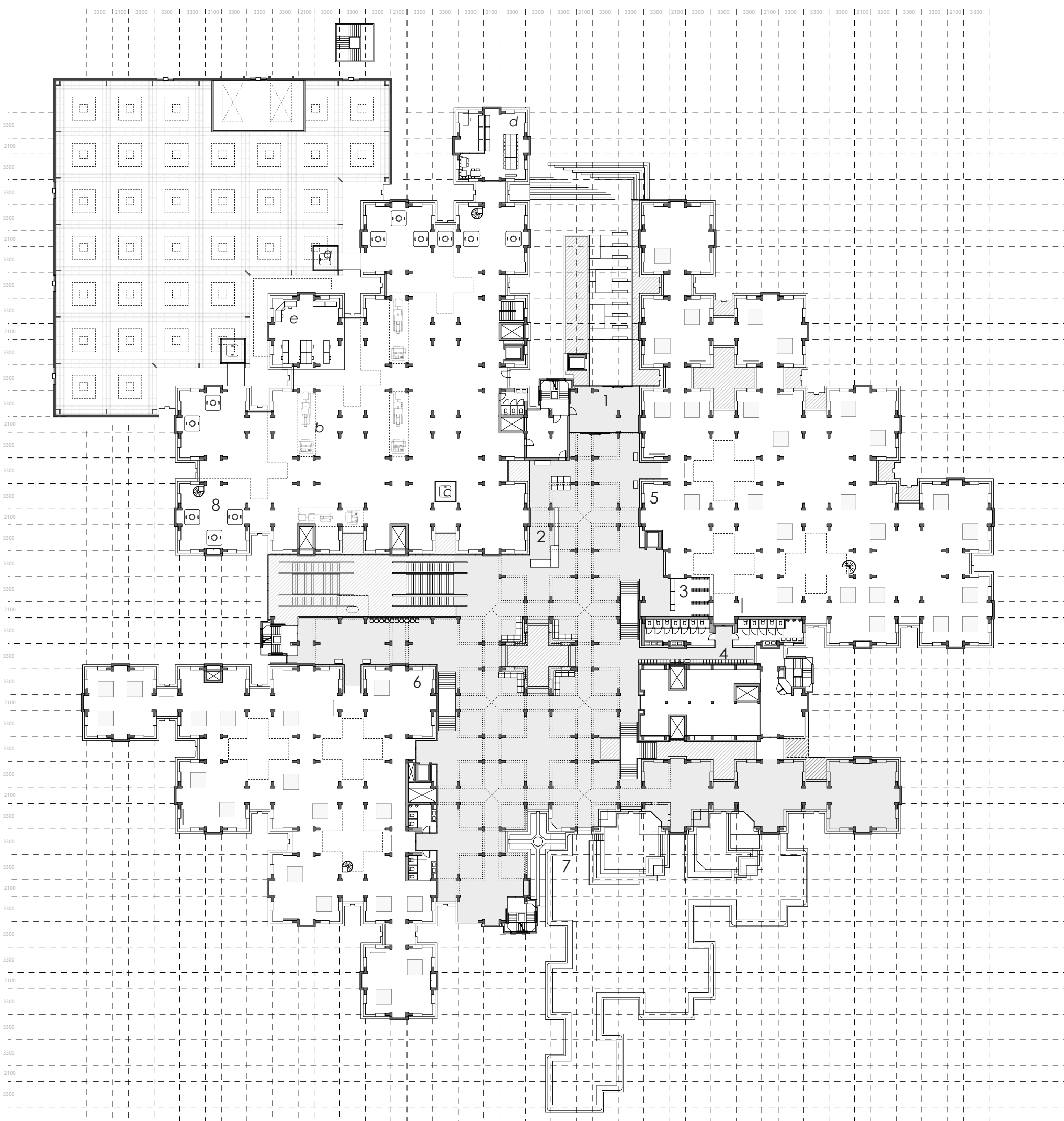
1. Storage
2. Installations
3. Parking
4. Entrance by escalator and stairs for visitors
5. Entrance for employees
6. Factory hall
 - a. Supply by trucks
 - b. Transport of plastic by a crane track
 - c. Processing of plastic (PETE, HDPE, PP)
 - shredders (3,2x2,8x2,95)
 - washing tanks (2,8x5,8x3,2)
 - Dryers (
 - d. Elevator; transport of plastics to next level
 - e. Storage of plastic
 - f. Storage of factory equipment
 - g. Installations
7. Cantine & dressing rooms employees

Level 0
1:500



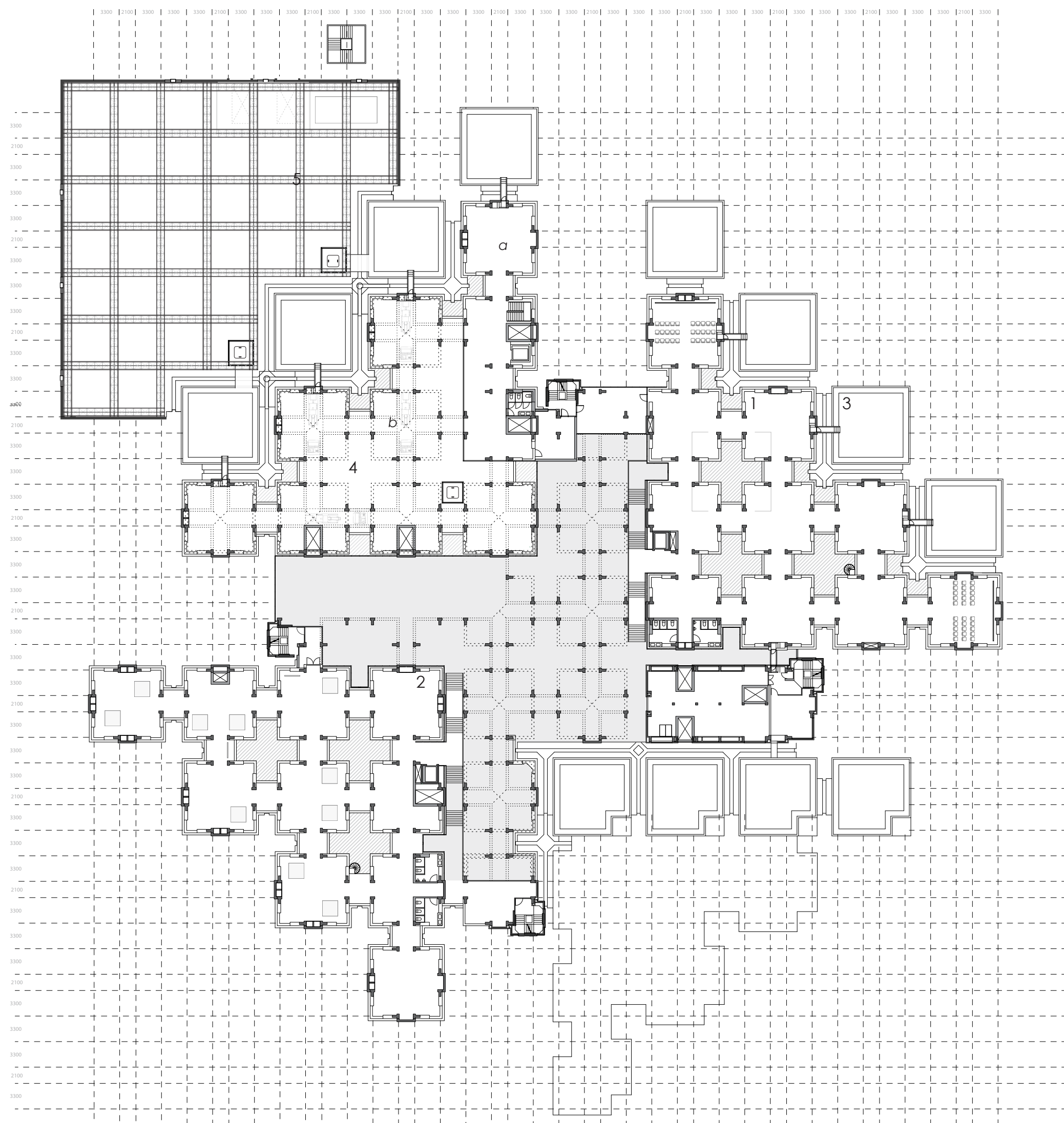
1. Stairs & escalator
2. Museum shop
3. Storage museum shop
4. Kitchen
5. Restaurant
6. Void, vertical connection
7. Library
8. Factory hall
9. Offices
10. Bike storage

Level 1
1:500



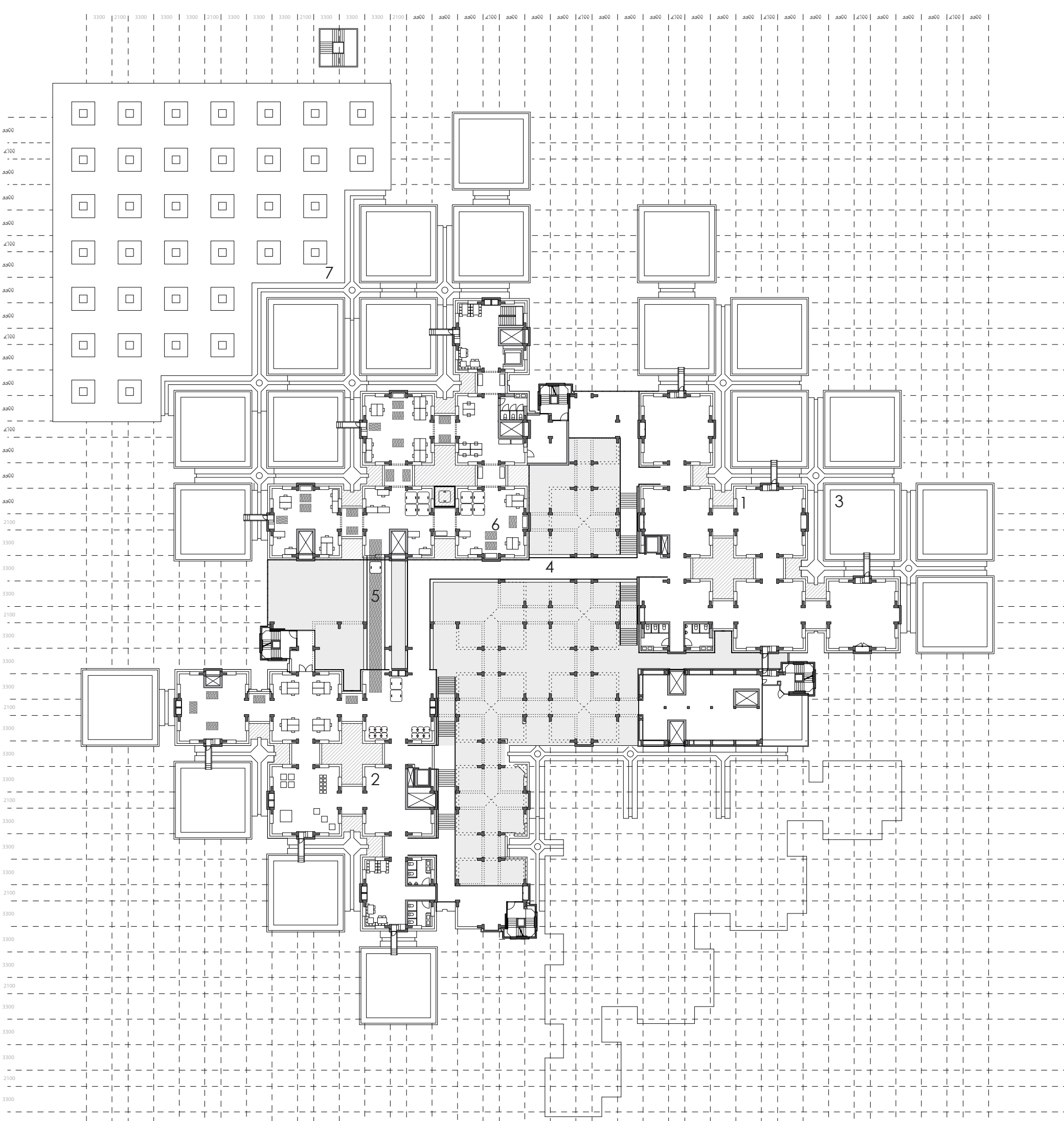
1. Entrance to the inner street
2. Ticket/ information desk
3. Wardrobe
4. Lockers & Toilet
5. Museum Hall Informative
6. Museum Hall Exhibition of recycled plastic products
7. Roof terrace
8. Factory quadrant
 - a. Plastic transport from lower level
 - b. Processing of plastic
 - Extruders (3,1x1,4x2,6)
 - Granulators (1,2x1x1,6)
 - c. Elevator
 - d. Office
 - e. Control room

Level 2
1:500



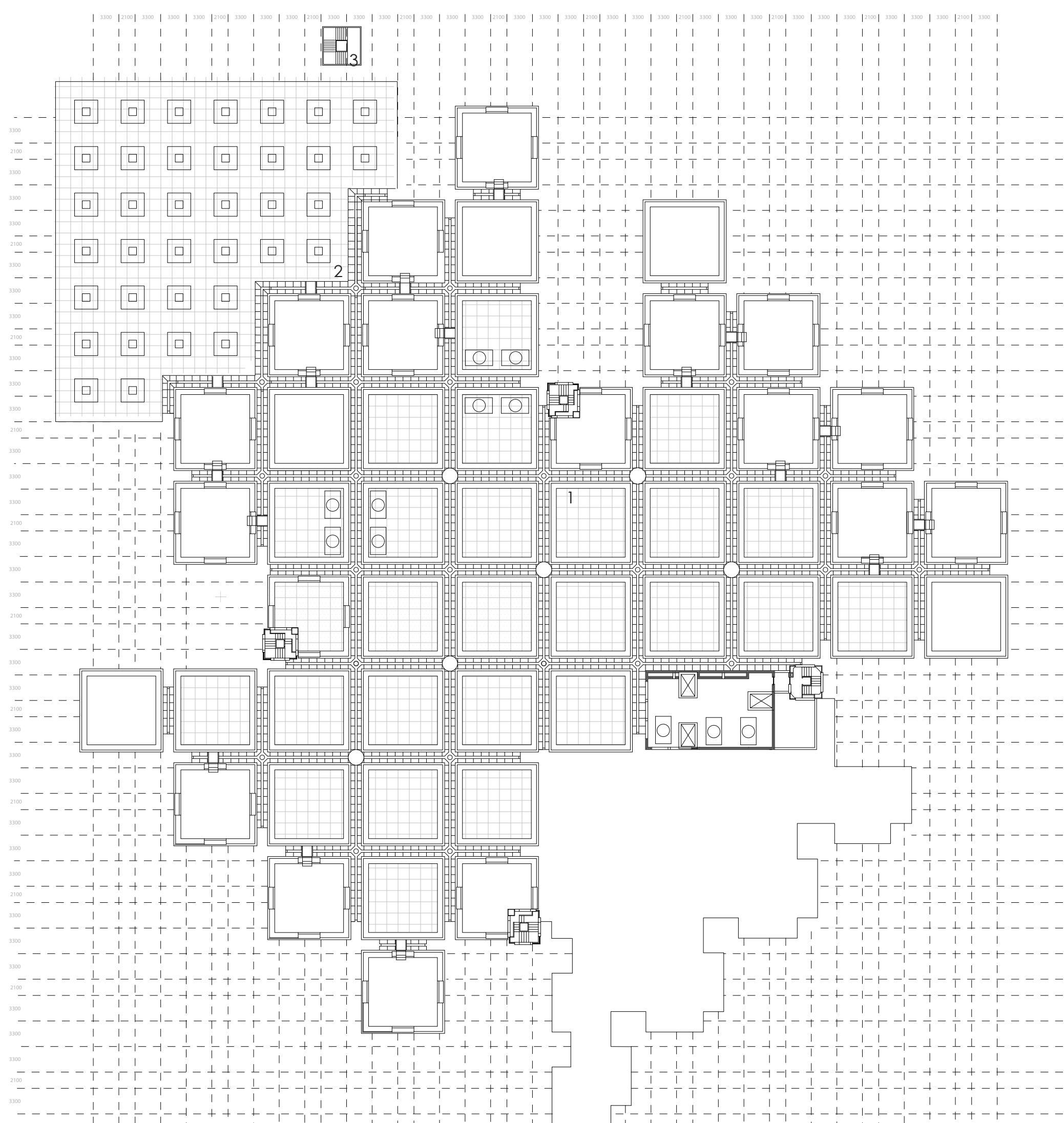
1. Museum hall Experiencing
2. Museum hall Exhibition of recycled plastic products
3. Roof terraces as extension of the exhibition space
4. Factory quadrant
 - a. Office space
 - b. Visible construction of beams and columns
5. Tri truss roof structure

Level 3
1:500



1. Museum hall Exhibition of recycled plastic products
2. Museum Hall 'Do it yourself'
3. Roof terraces as extension of the exhibition space
4. Walking bridge to connect the 2 museum quadrants
5. Transport of granulate from factory to museum
6. Factory quadrant
 - Injection molding machines
 - Workspaces to make recycled plastic products
7. Roof landscape of the new hall with skylights

Level 4
1:500

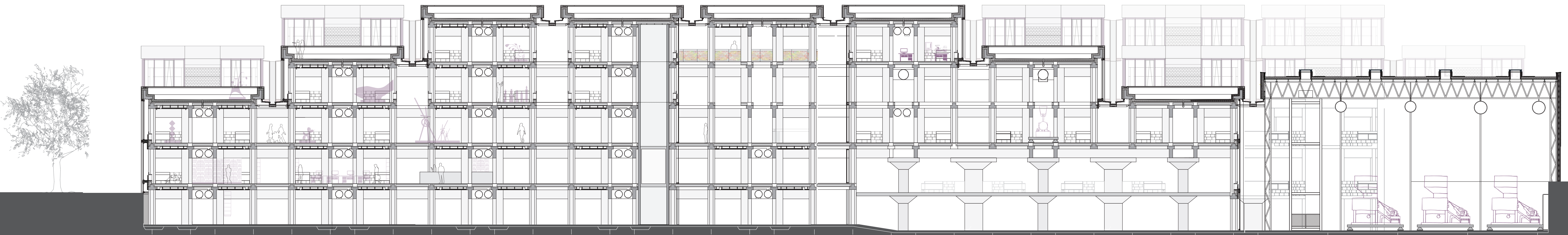


1. Existing stepped roof landscape
2. Roof landscape of the new hall with skylights
3. Look out tower for a view on the roof landscape

Level 5
1:500



Section A-A' | 1:200



Section B-B' | 1:200



North West facade | 1:200



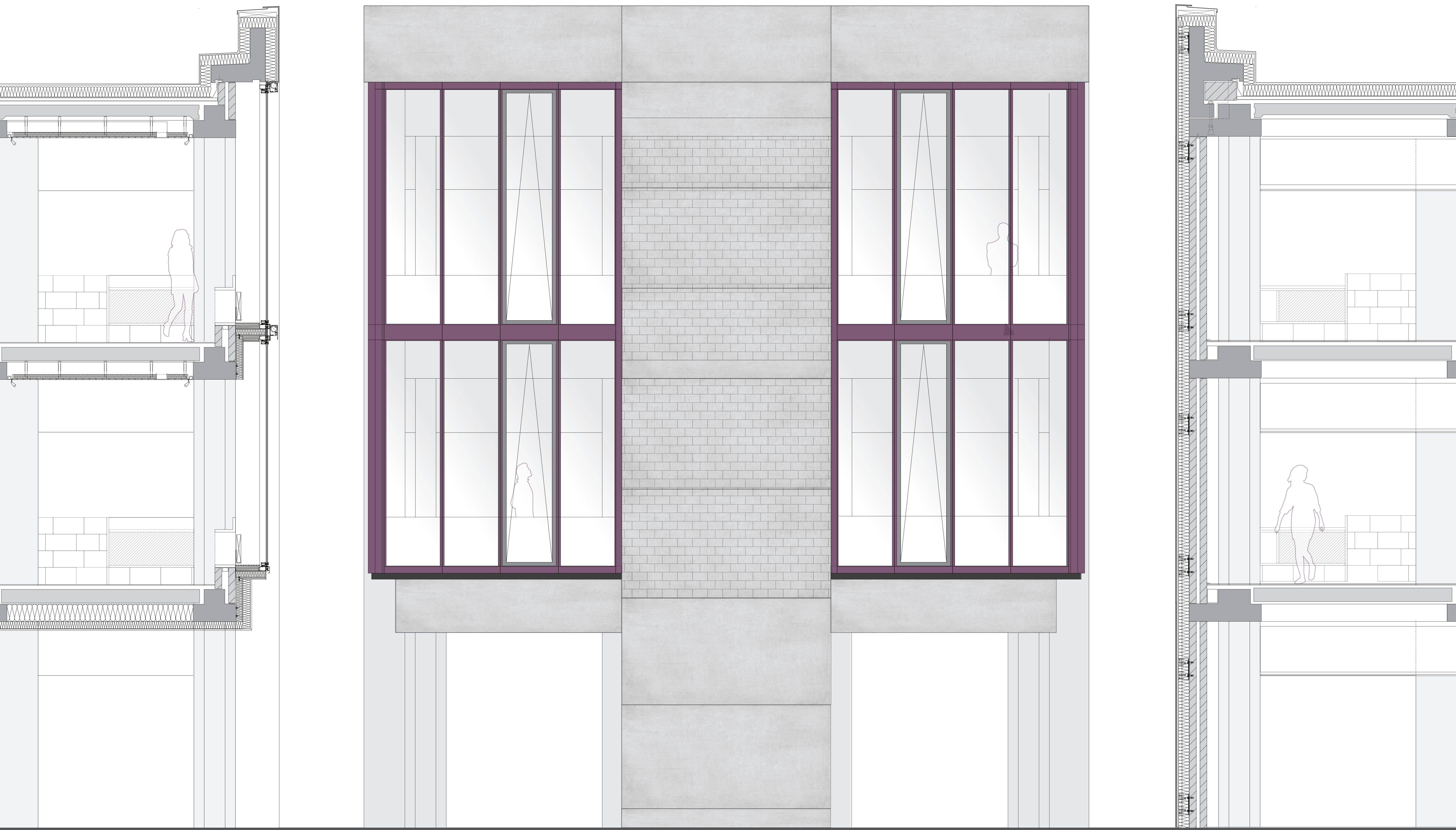
North East facade | 1:200



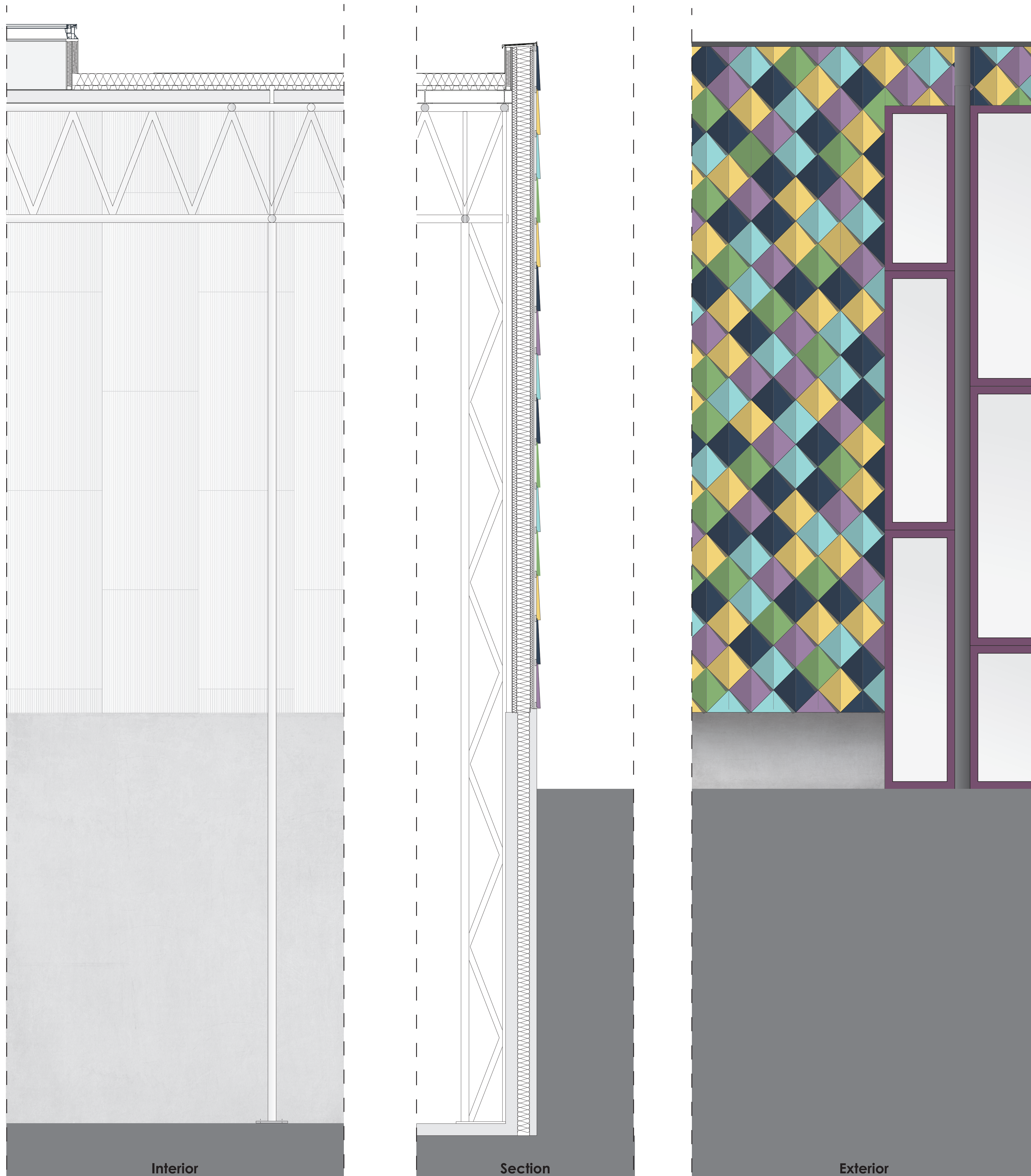
South East facade | 1:200



South West facade | 1:200



Facade Fragment
1:25



Facade Fragment New Hall
1:25