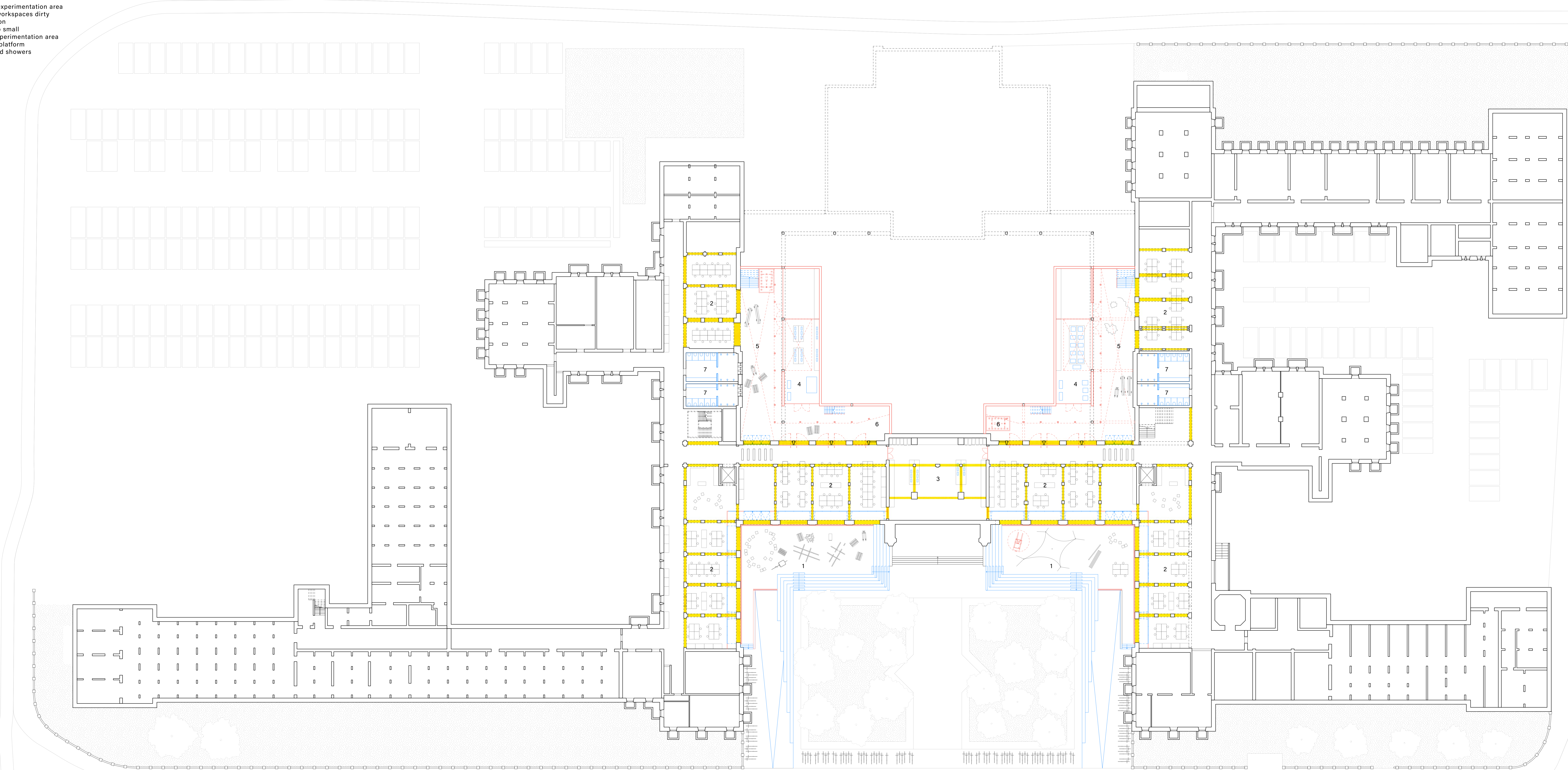
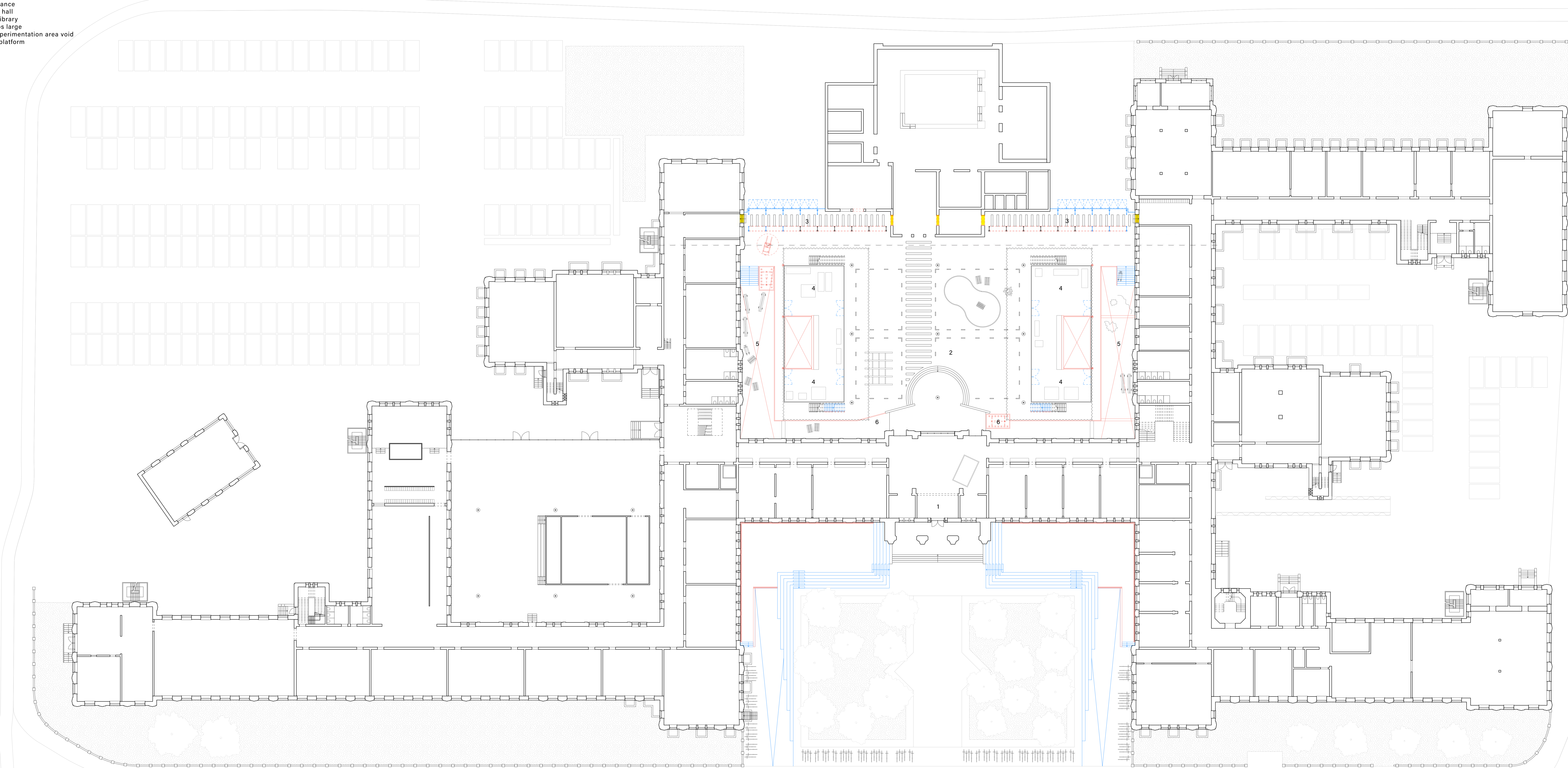


- 1 outdoor experimentation area
- 2 student workspaces dirty
- 3 tool station
- 4 workshop small
- 5 indoor experimentation area
- 6 elevator/platform
- 7 toilets and showers



plan, basement — 1.200

- 1 main entrance
- 2 assembly hall
- 3 material library
- 4 workshops large
- 5 indoor experimentation area void
- 6 elevator/platform

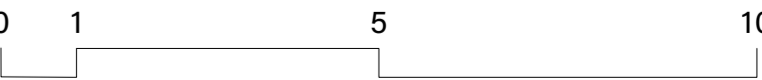


plan, ground floor — 1.200

- 1 student workspaces clean
- 2 student workspaces dirty
- 3 workshop small
- 4 workshop large
- 5 assembly hall



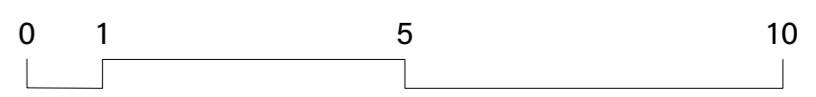
section BB' — 1:100



- 1 outdoor experimentation area
- 2 student workspaces clean
- 3 student workspaces dirty
- 4 workshop small
- 5 workshop large
- 6 material library

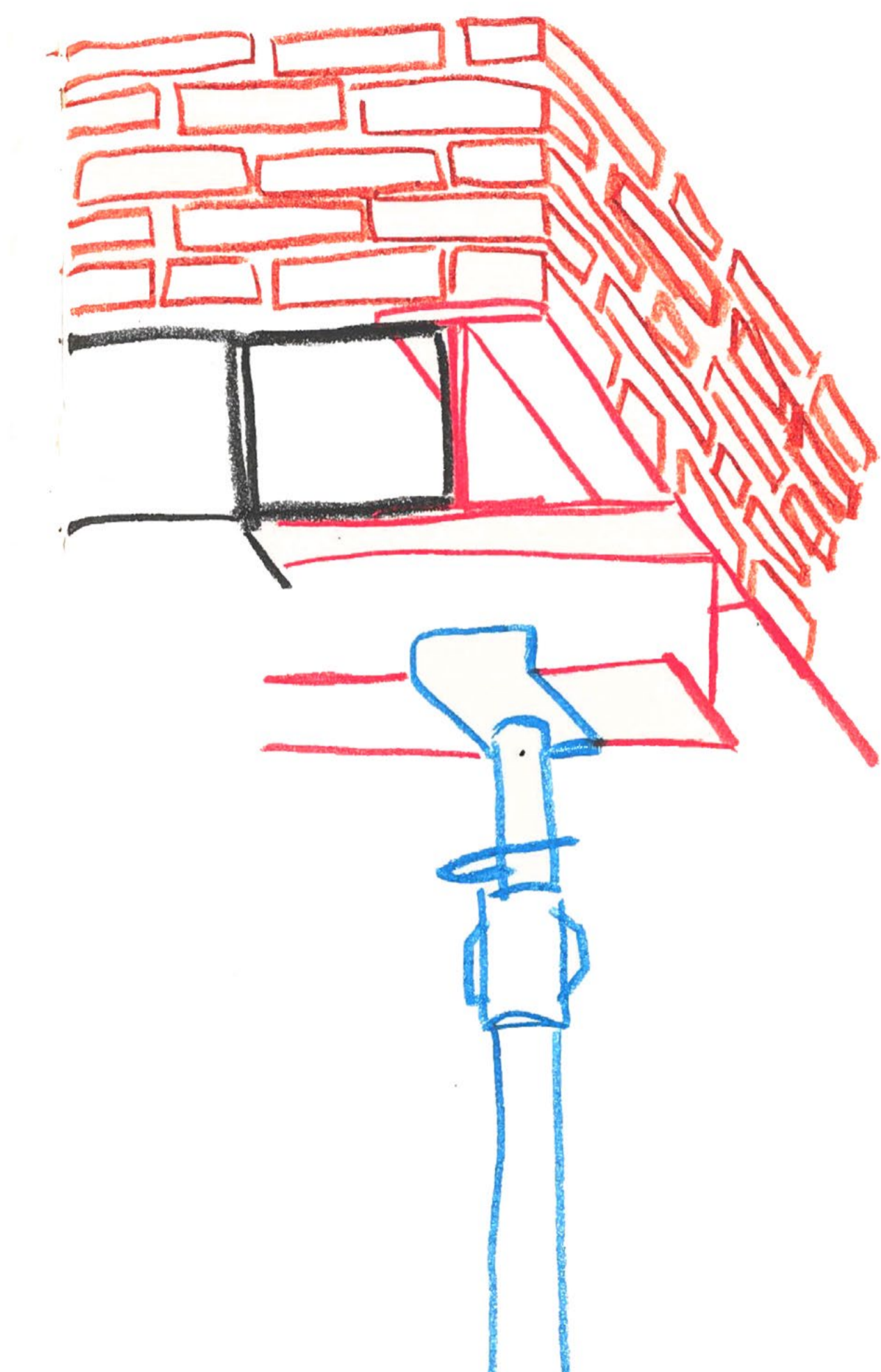


section AA' — 1:100

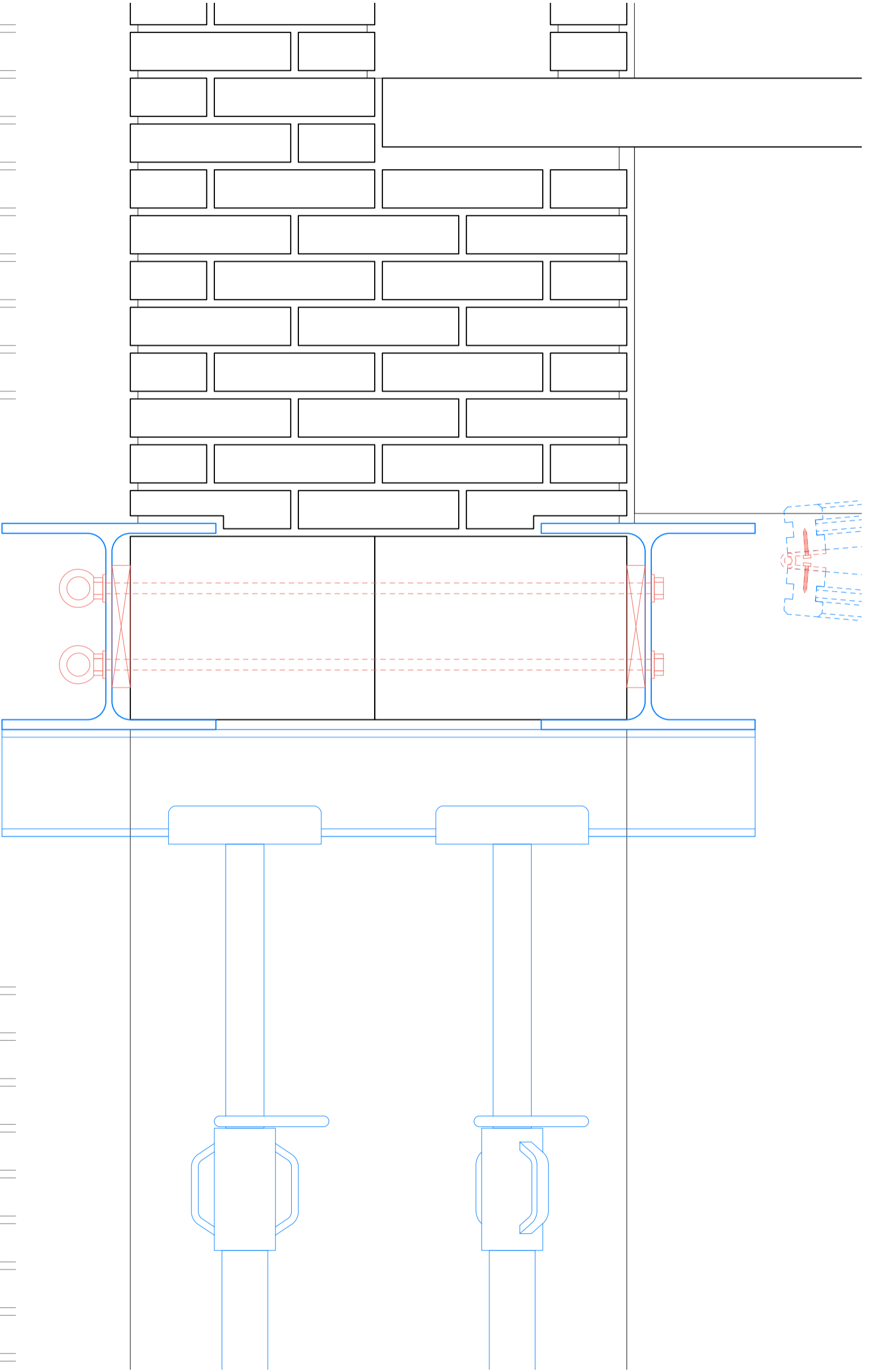
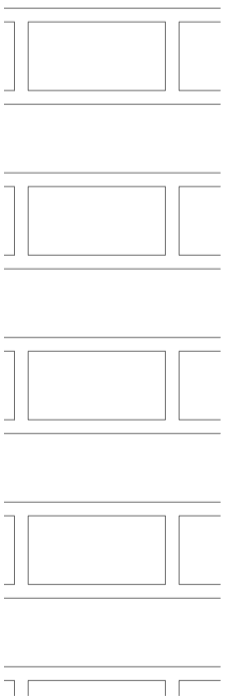
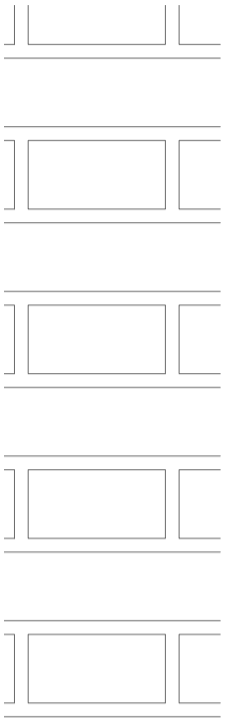


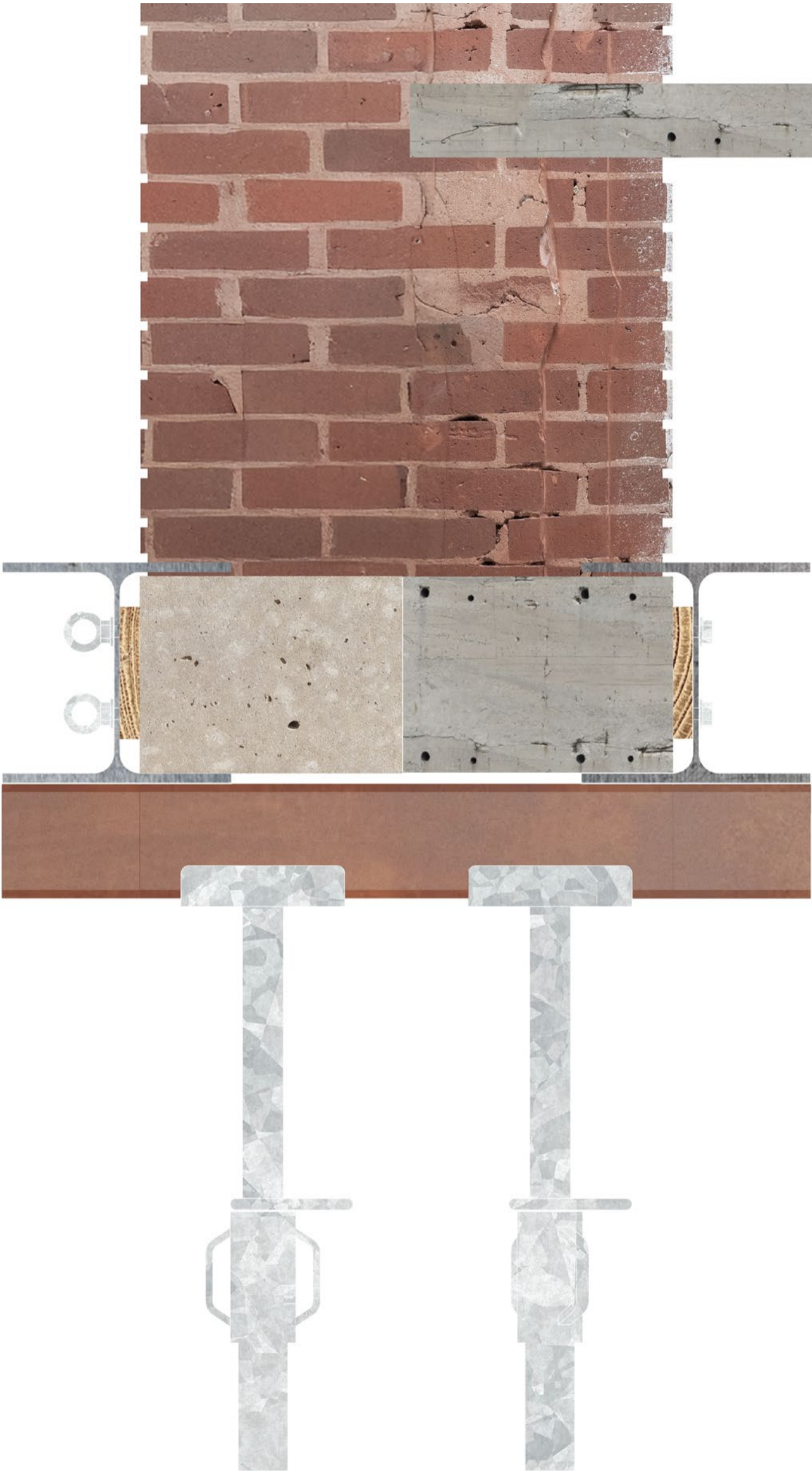


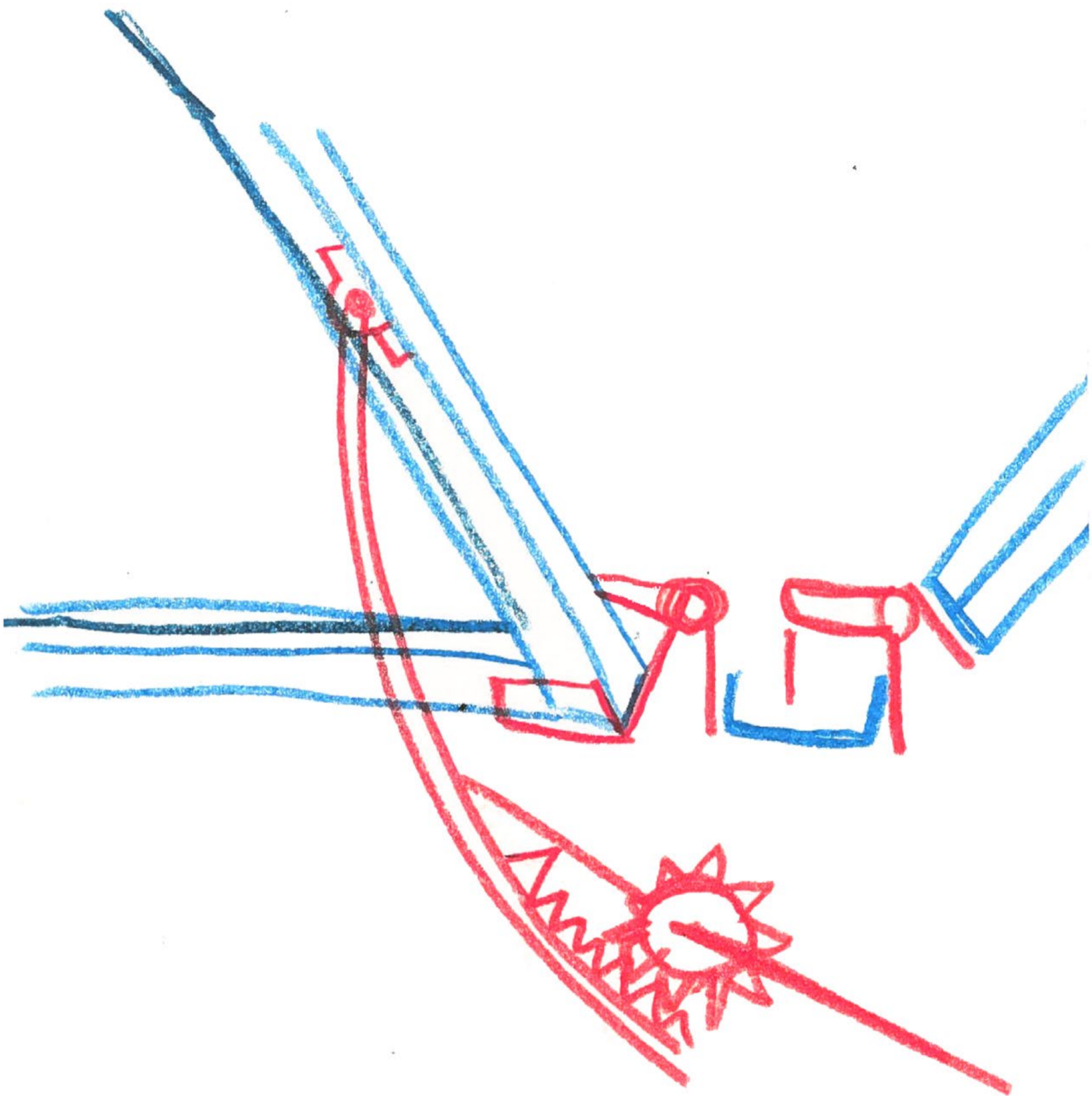
north elevation — 1.100



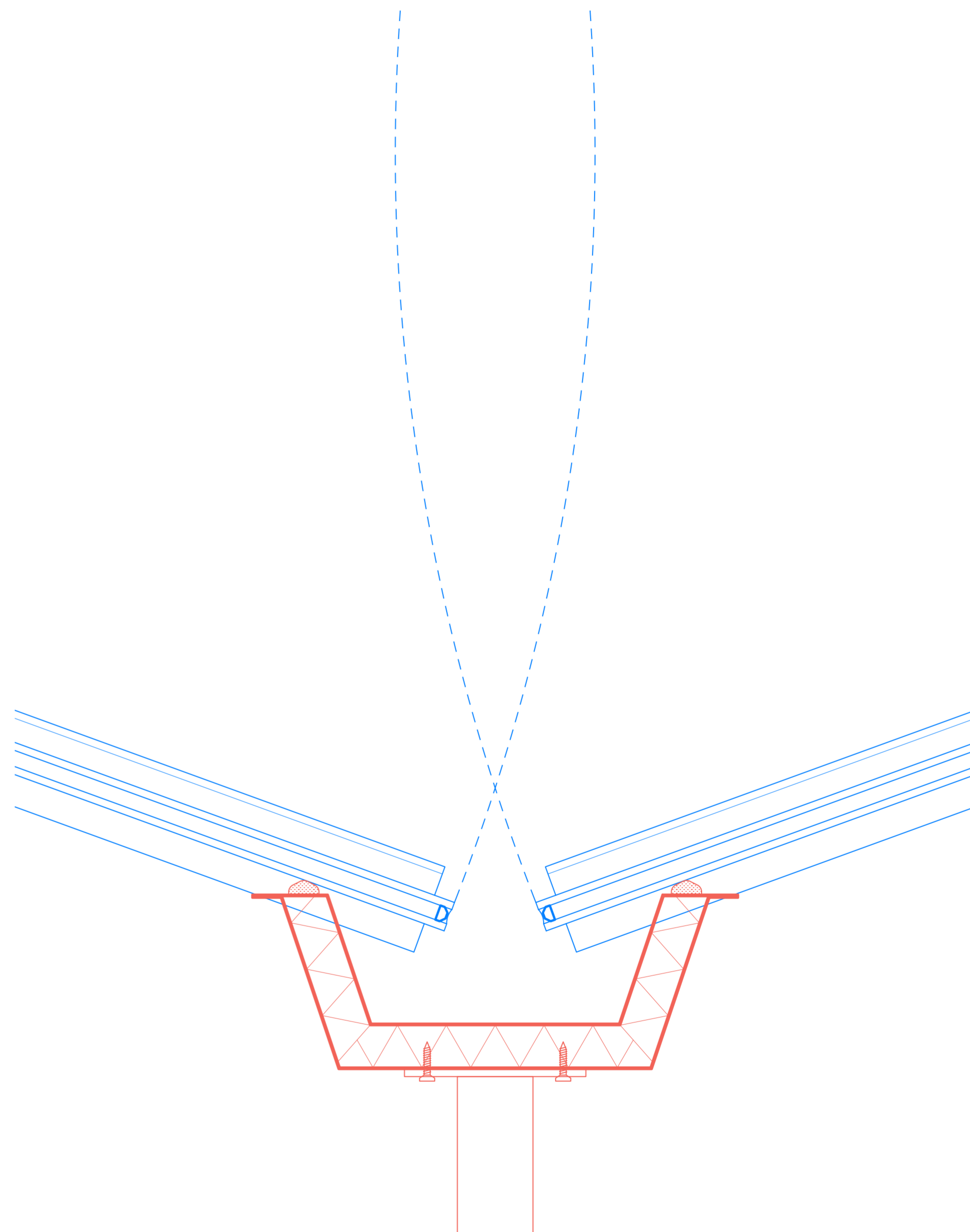
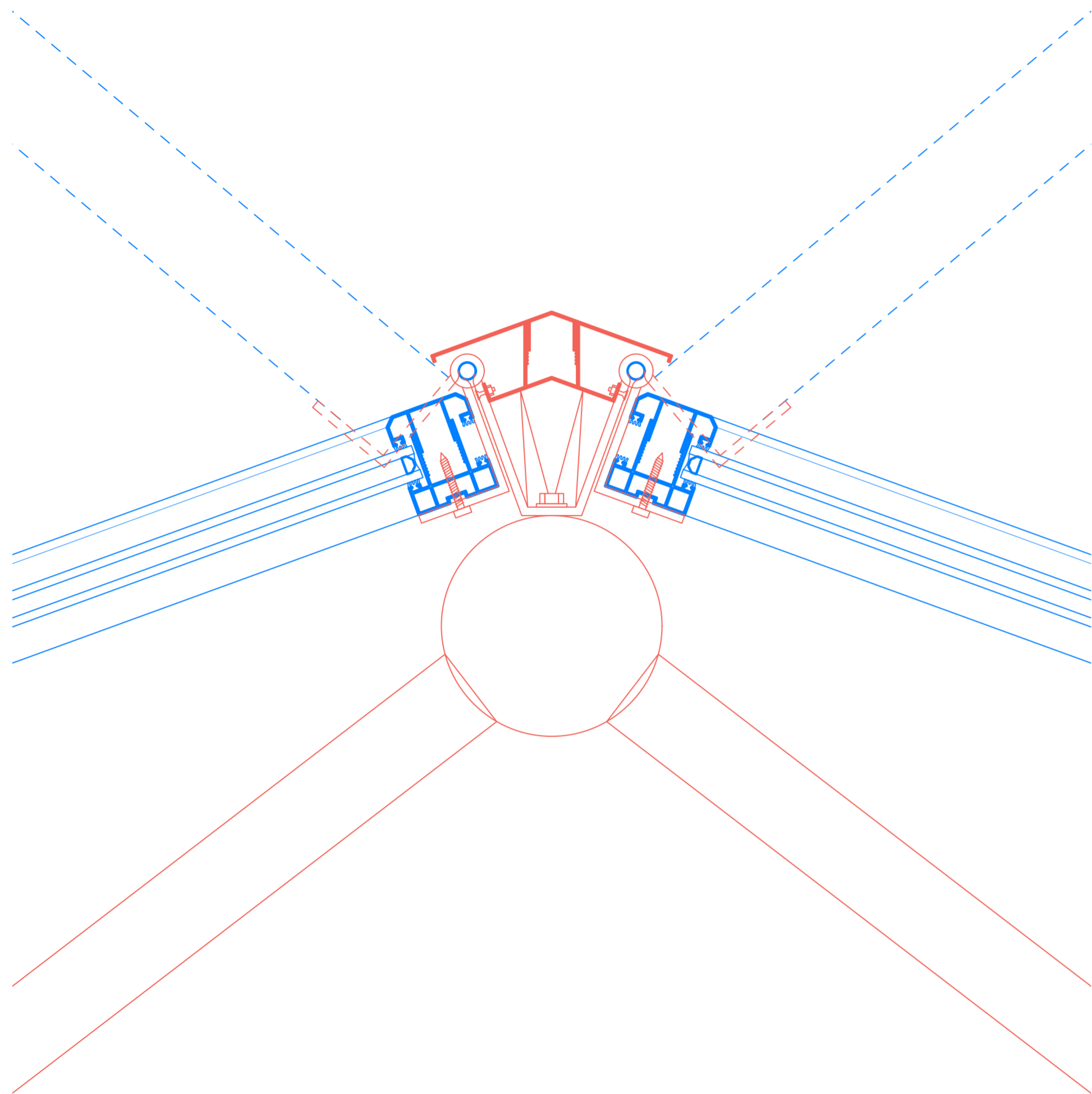
how to make a building float?

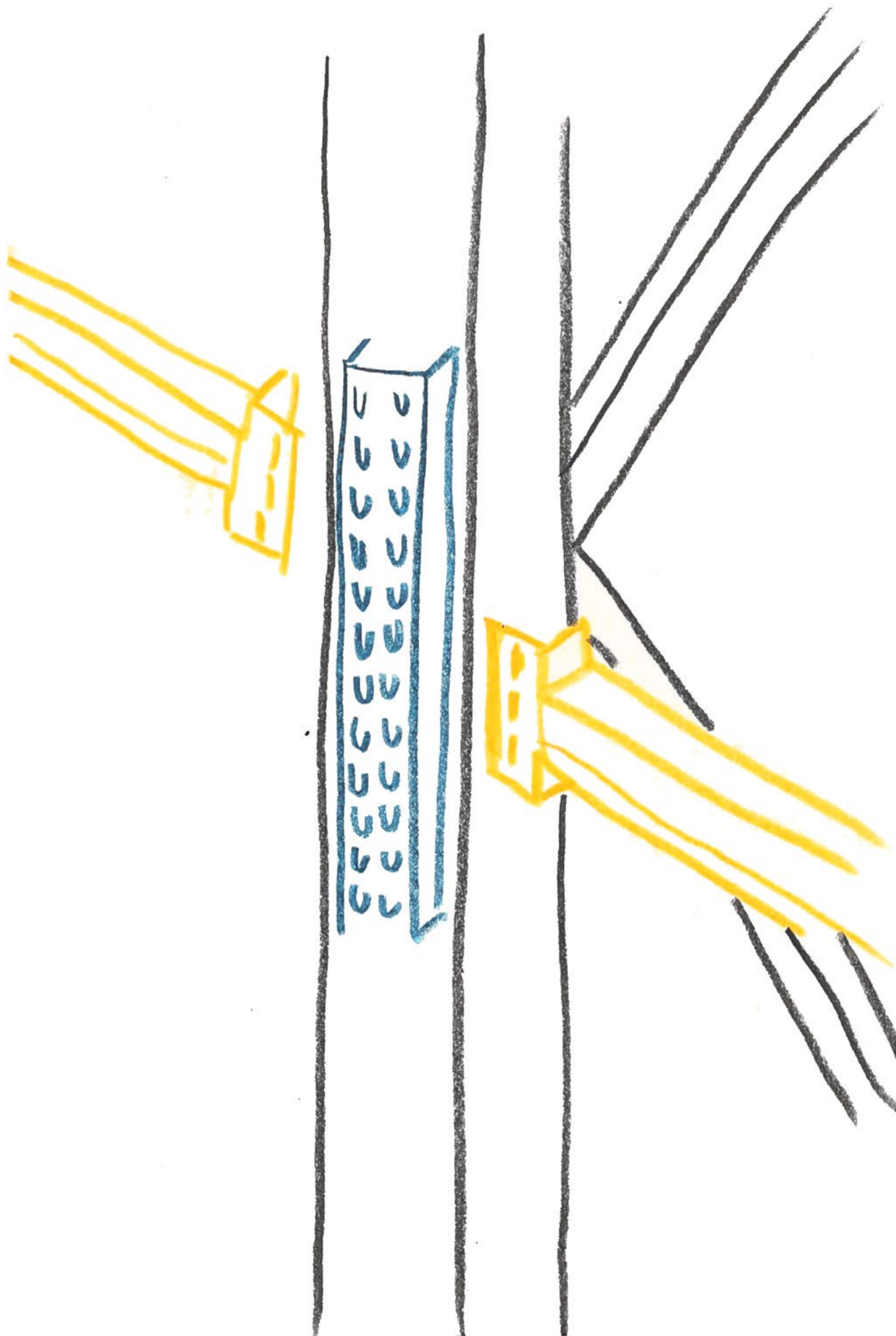






how to make outdoor indoor?





how to make a facade into rack?

