

# Control of Voice coil transducers

Design and implementation of a Motional Feedback  
Loudspeaker Woofer

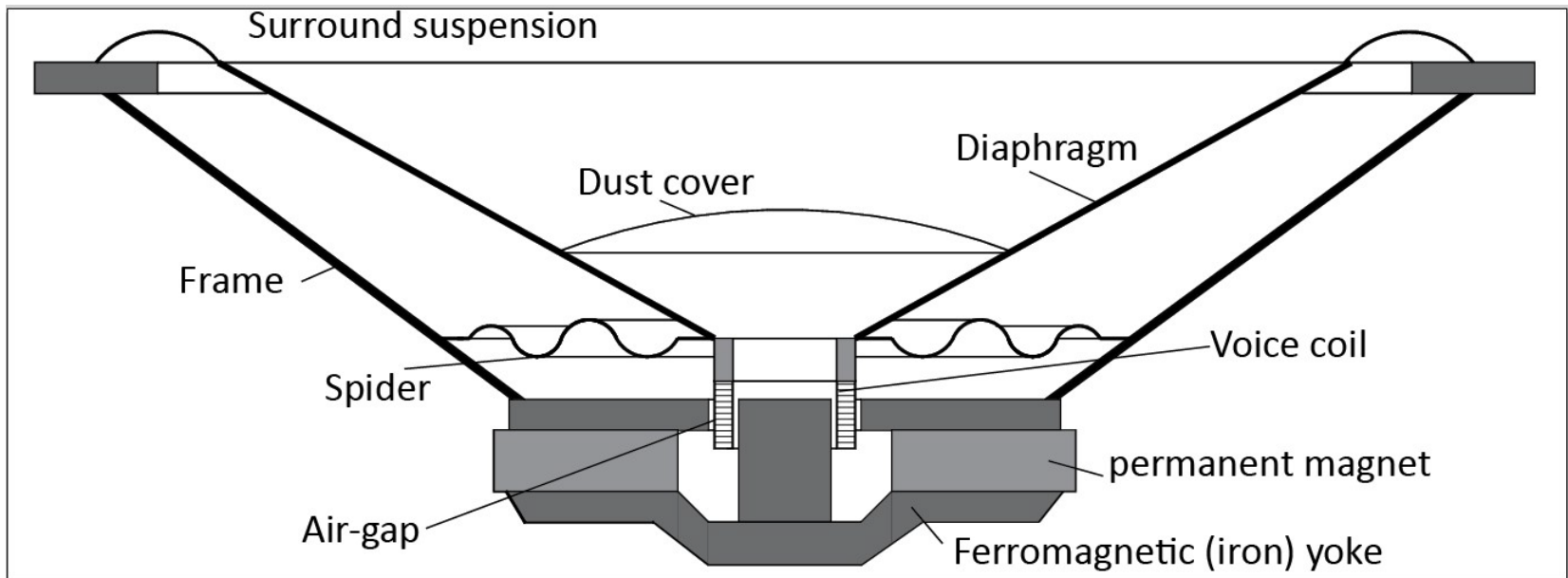
# Overview

- Introduction to loudspeakers
- Objective
- Setup 1
- Results 1
- Setup 2
- Results 2
- Conclusion
- Questions

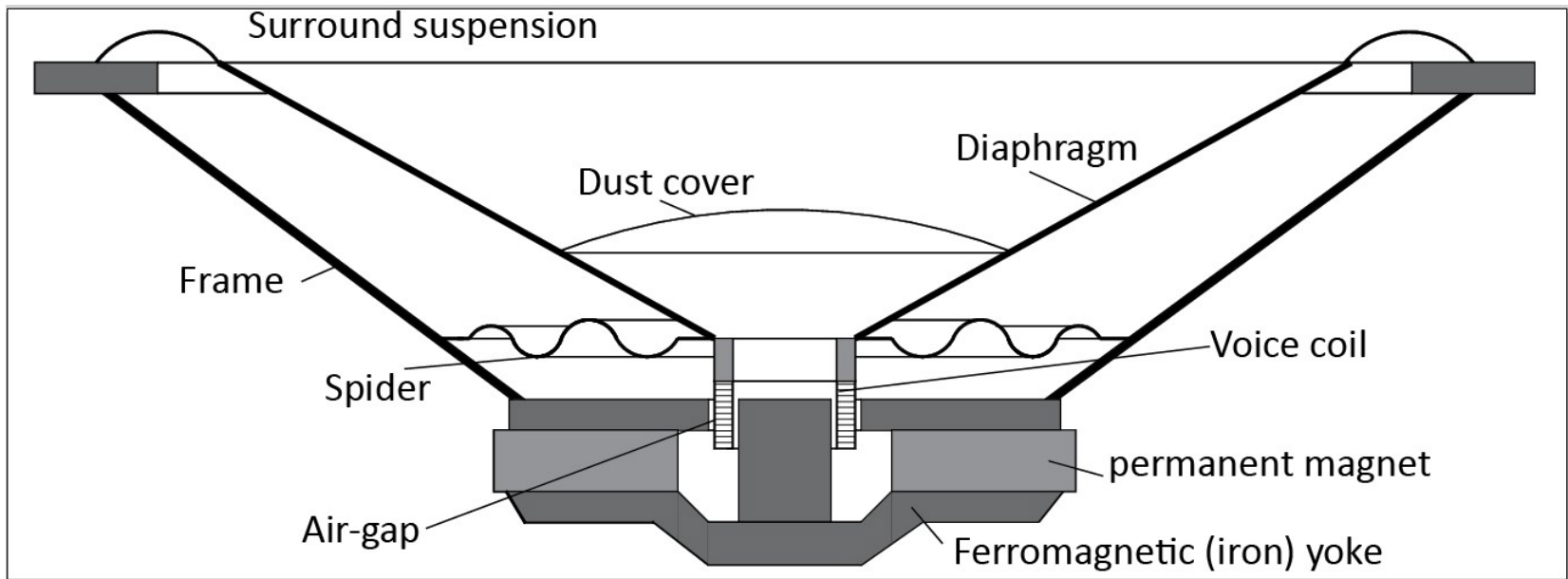
# Introduction to loudspeakers



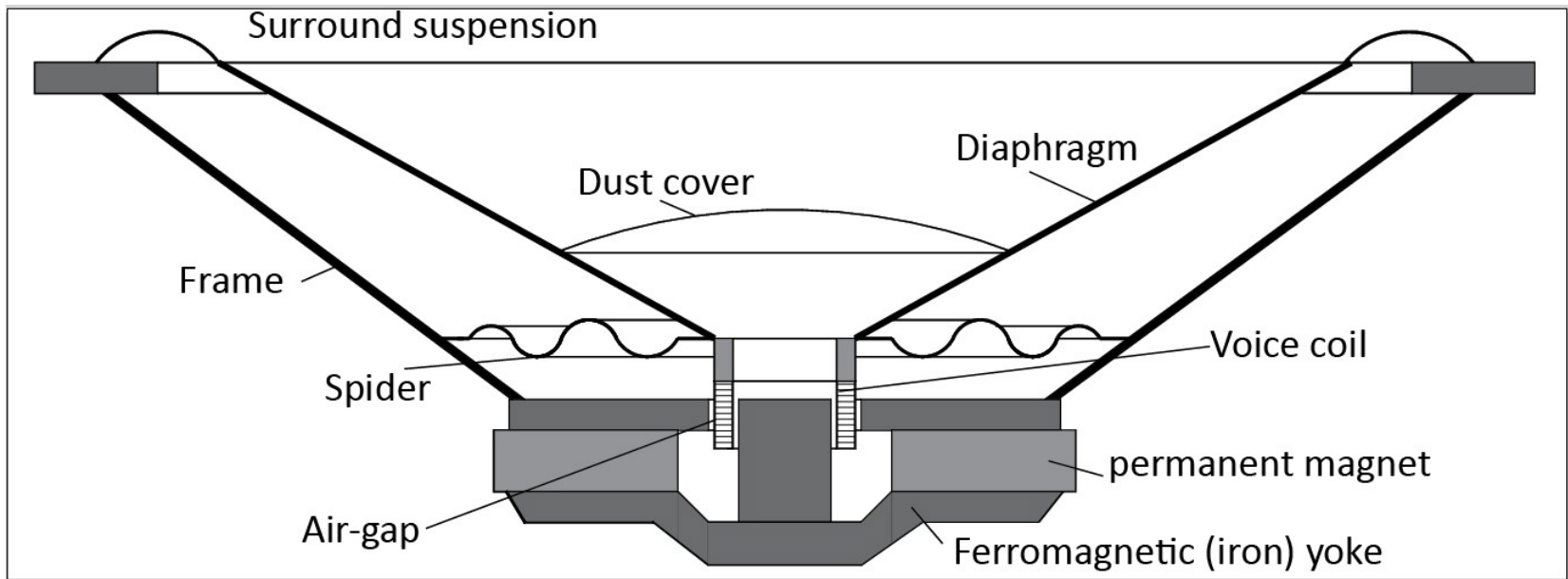
# Introduction to loudspeakers



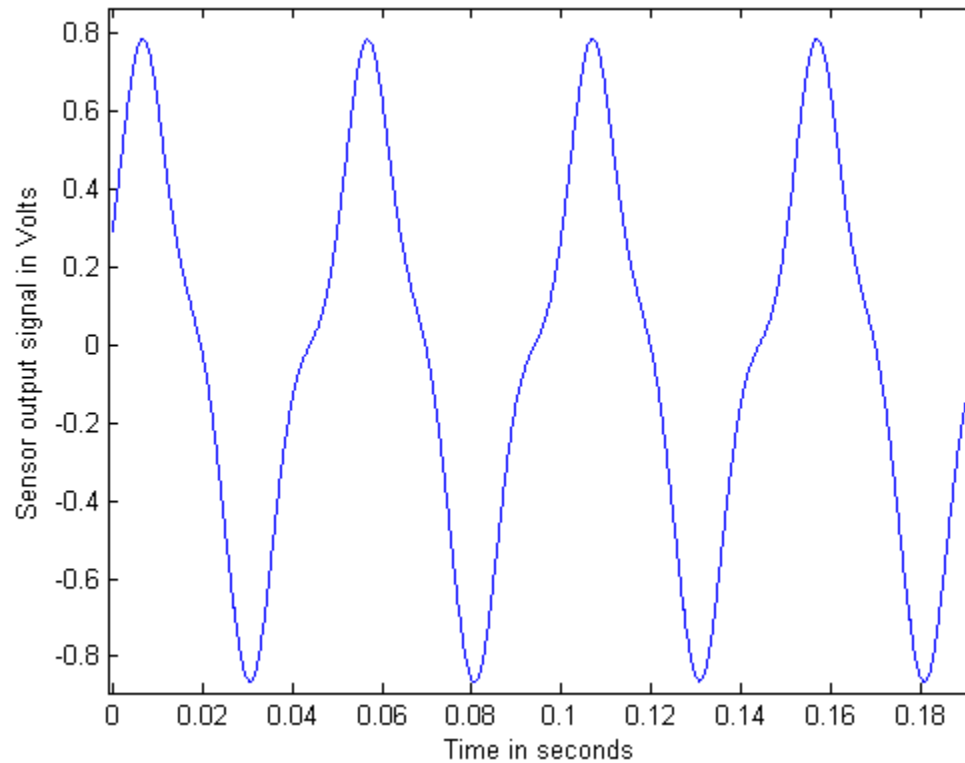
# Introduction to loudspeakers



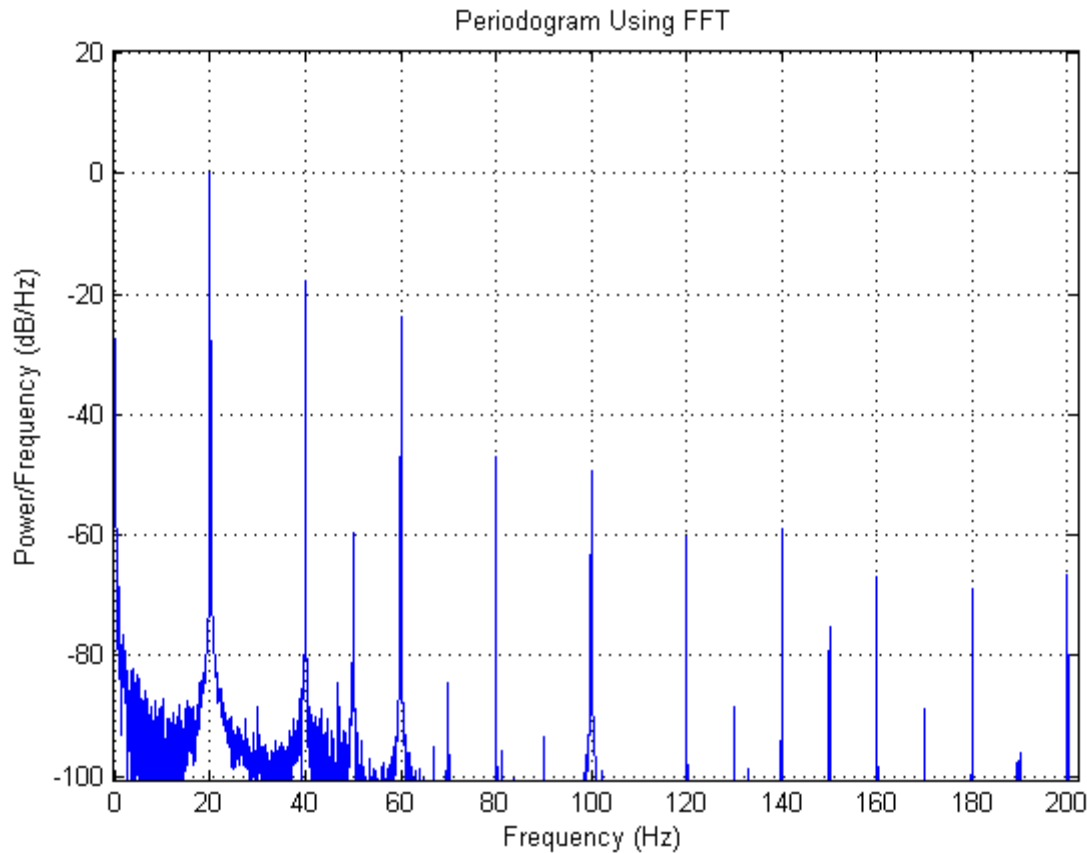
# Introduction to loudspeakers



# Introduction to loudspeakers

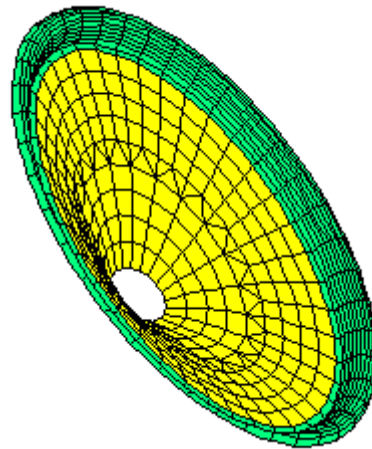


# Introduction to loudspeakers



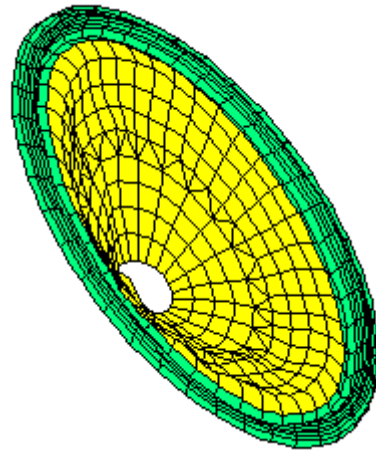


# Introduction to loudspeakers



PACSYS

# Introduction to loudspeakers



PACSYS

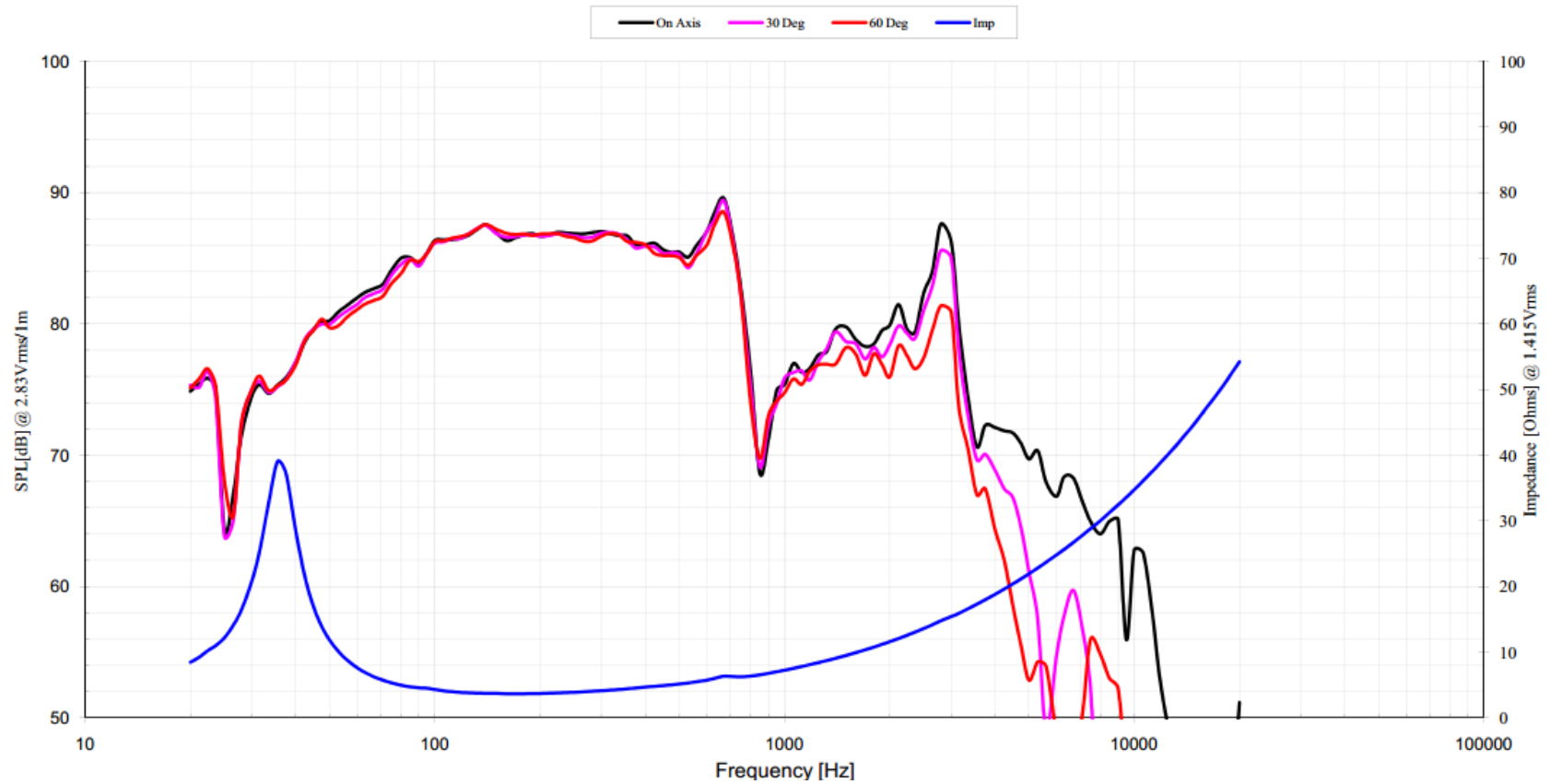
# Objective

- Suppress disturbances due to non-linearities
- Reduce the cone break-up

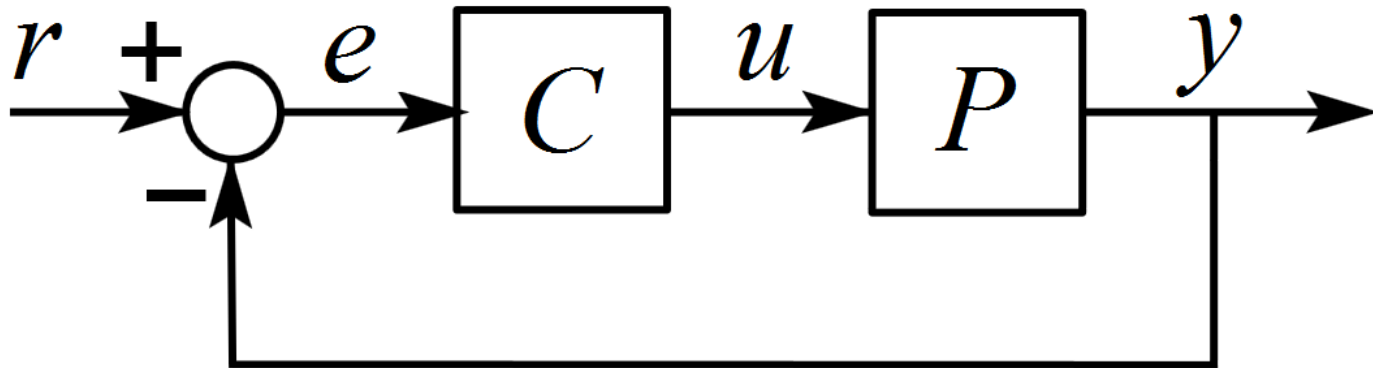
# Setup 1



# Setup 1



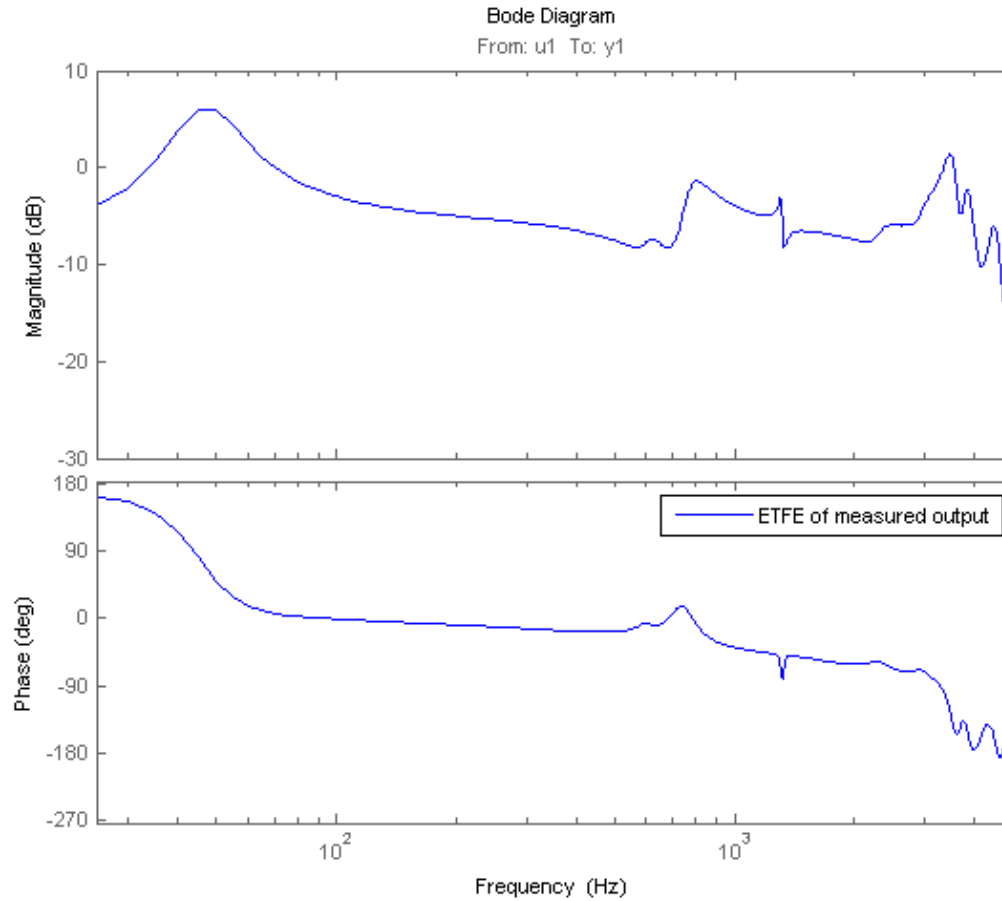
# Setup 1



# Setup 1

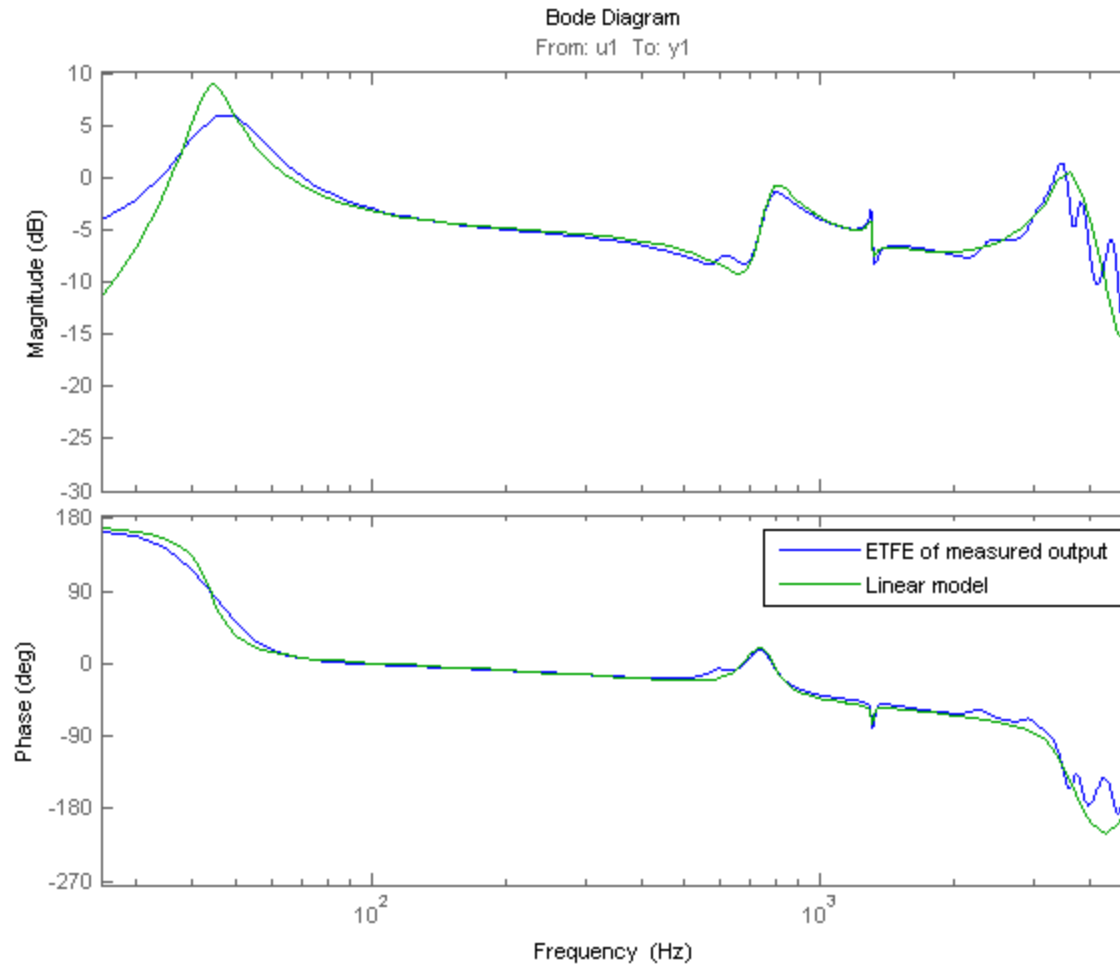
- Reference signal
- Implementation of controller
- Measure the motion of woofer

# Setup 1

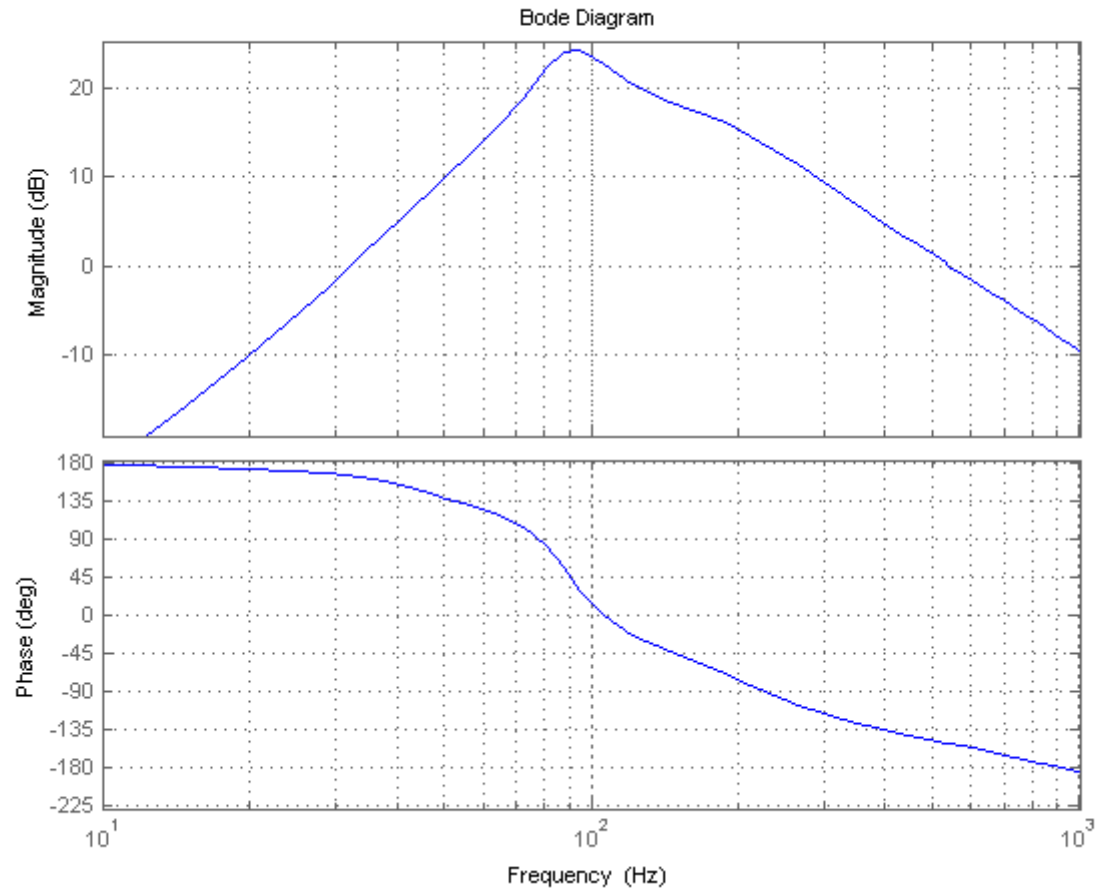




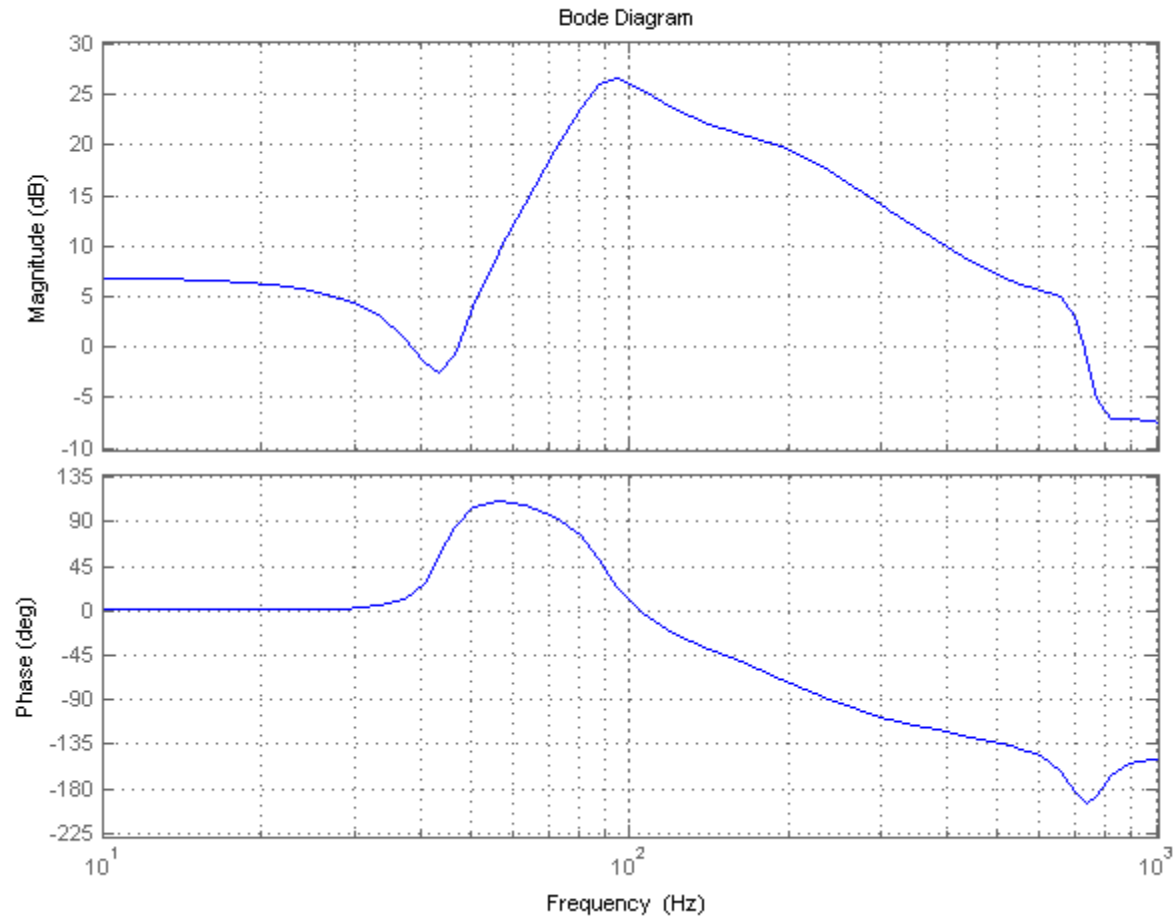
# Setup 1



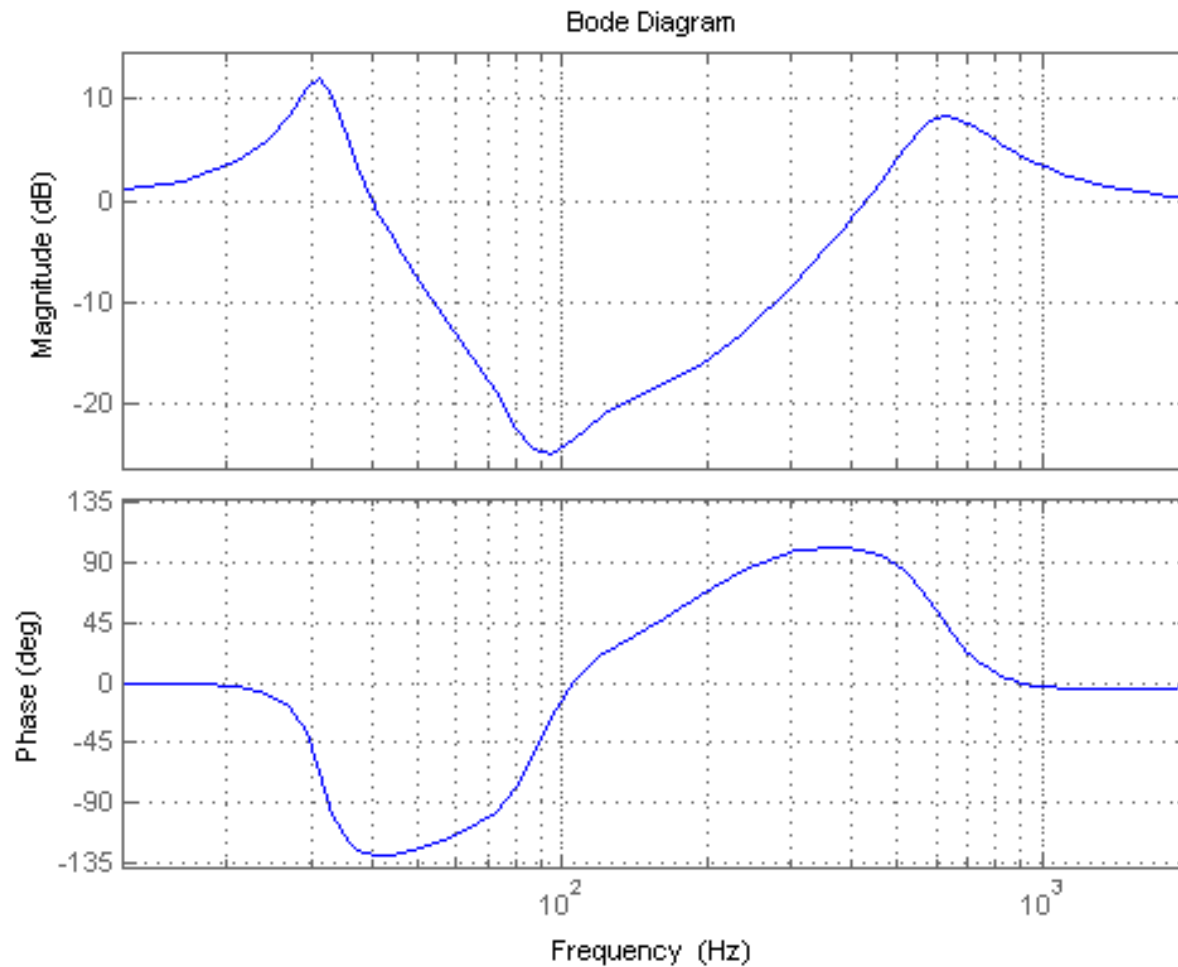
# Setup 1



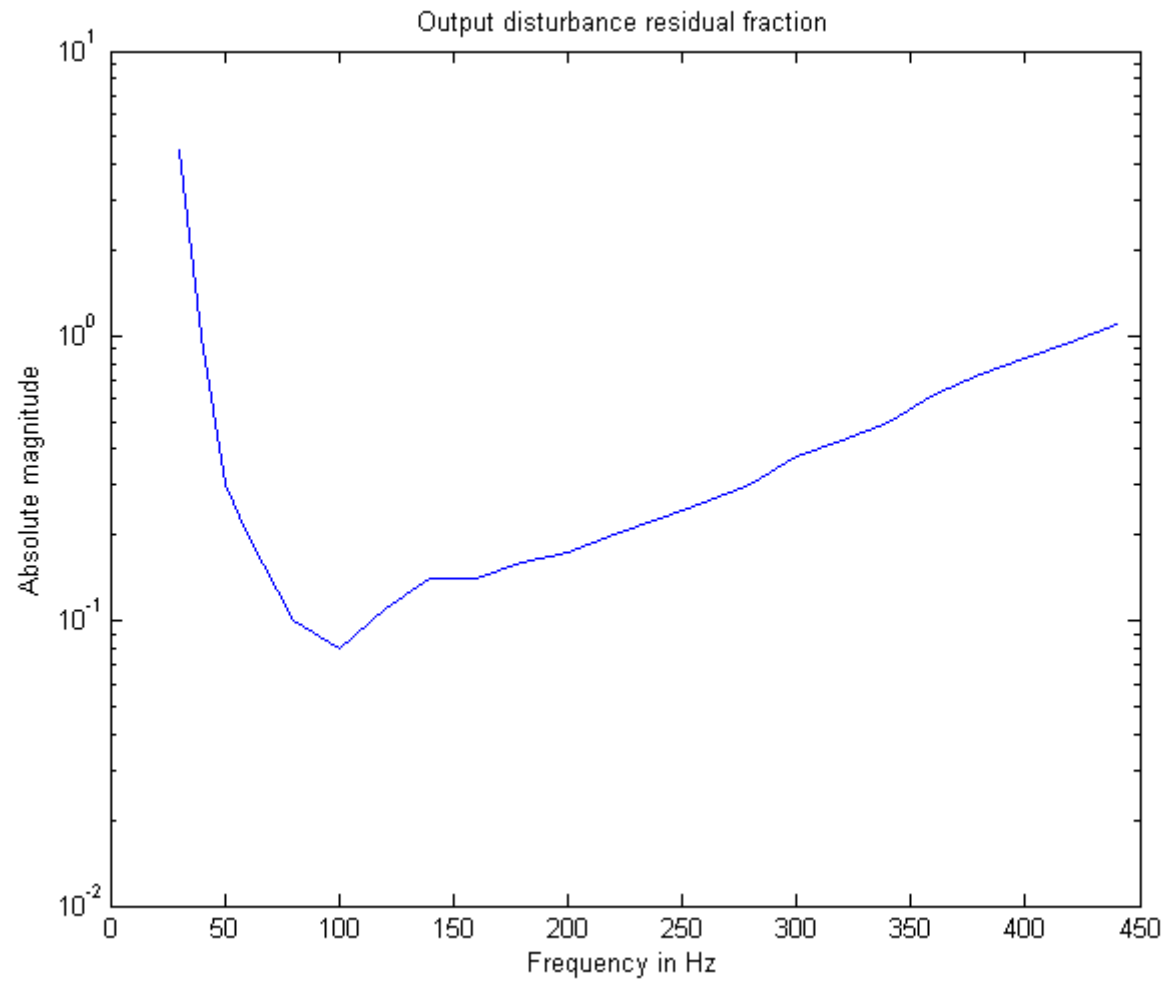
# Setup 1



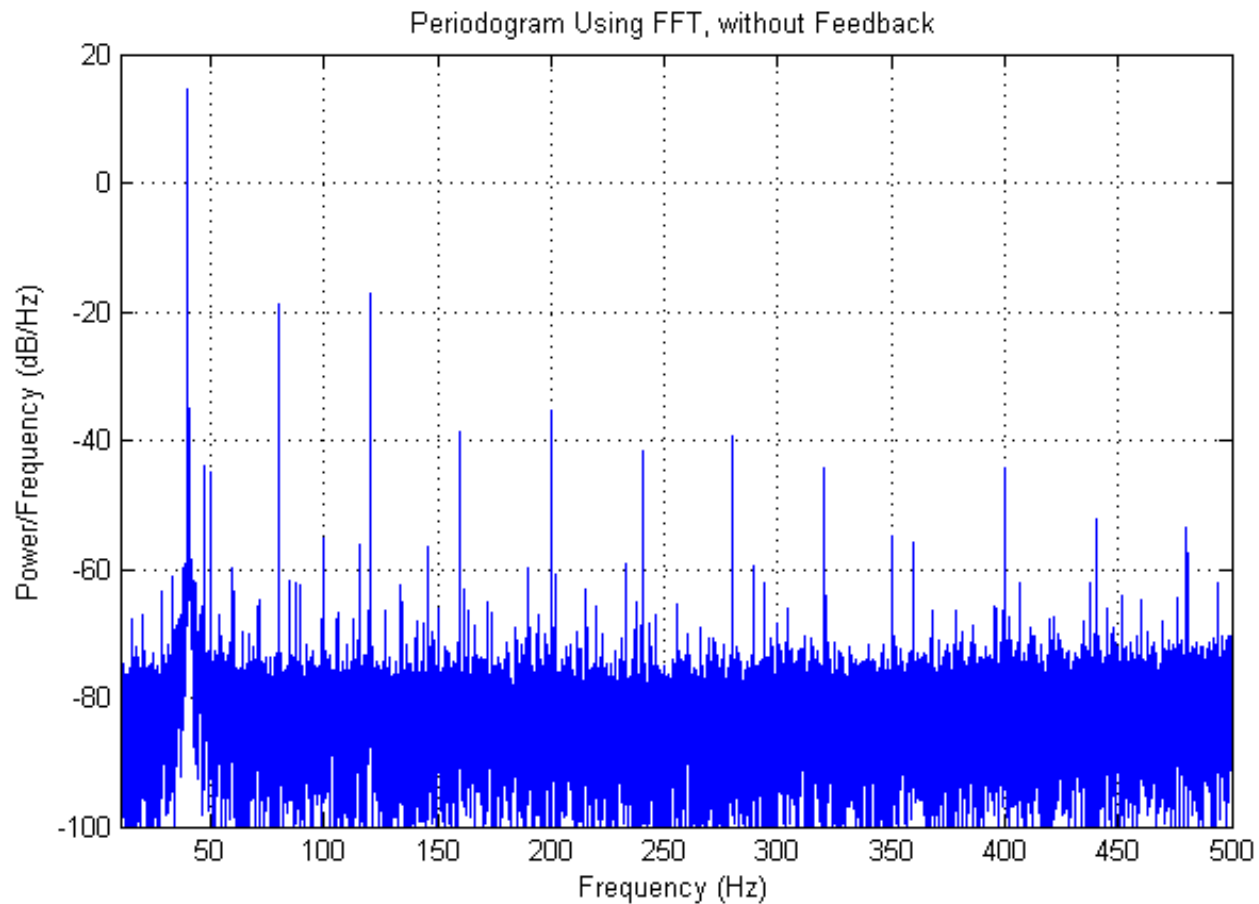
# Setup 1



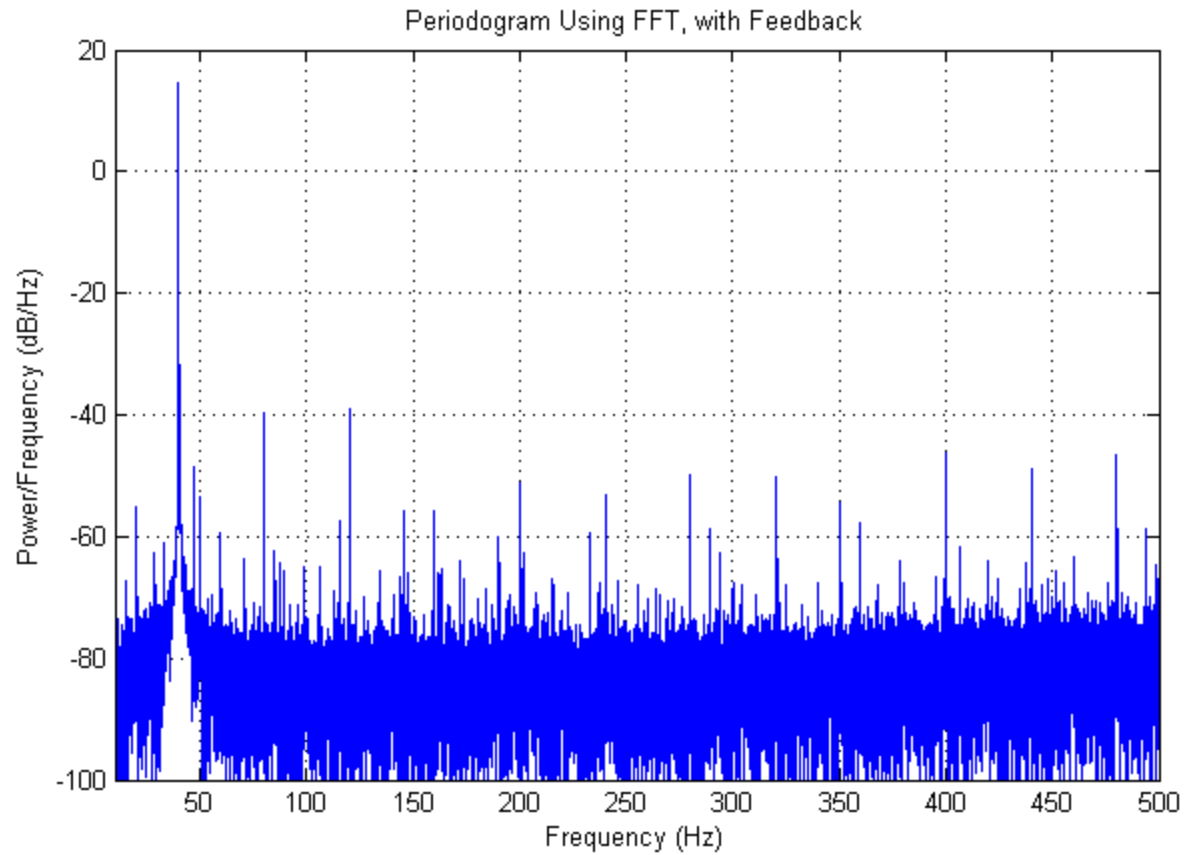
# Setup 1



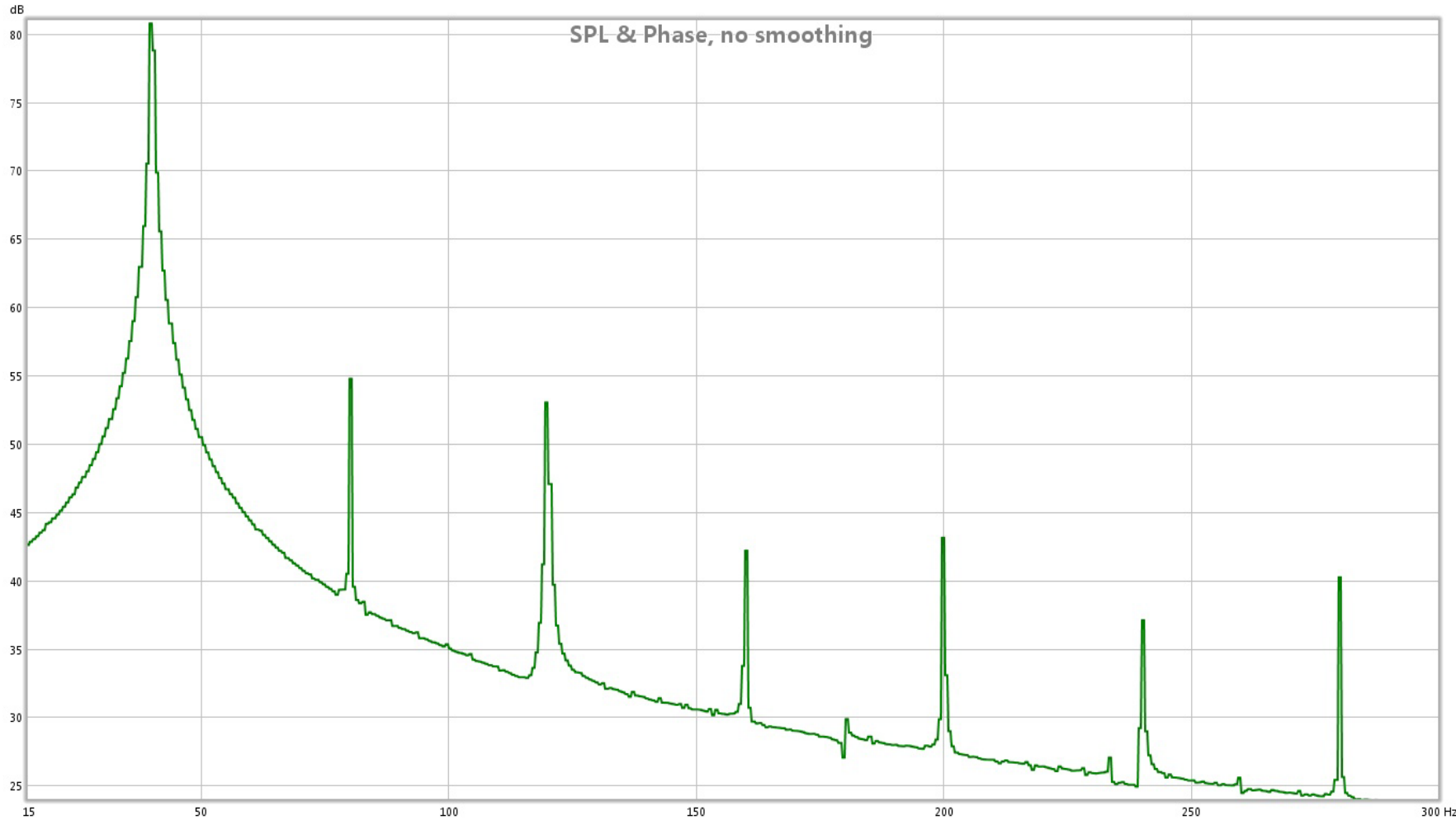
# Setup 1



# Setup 1

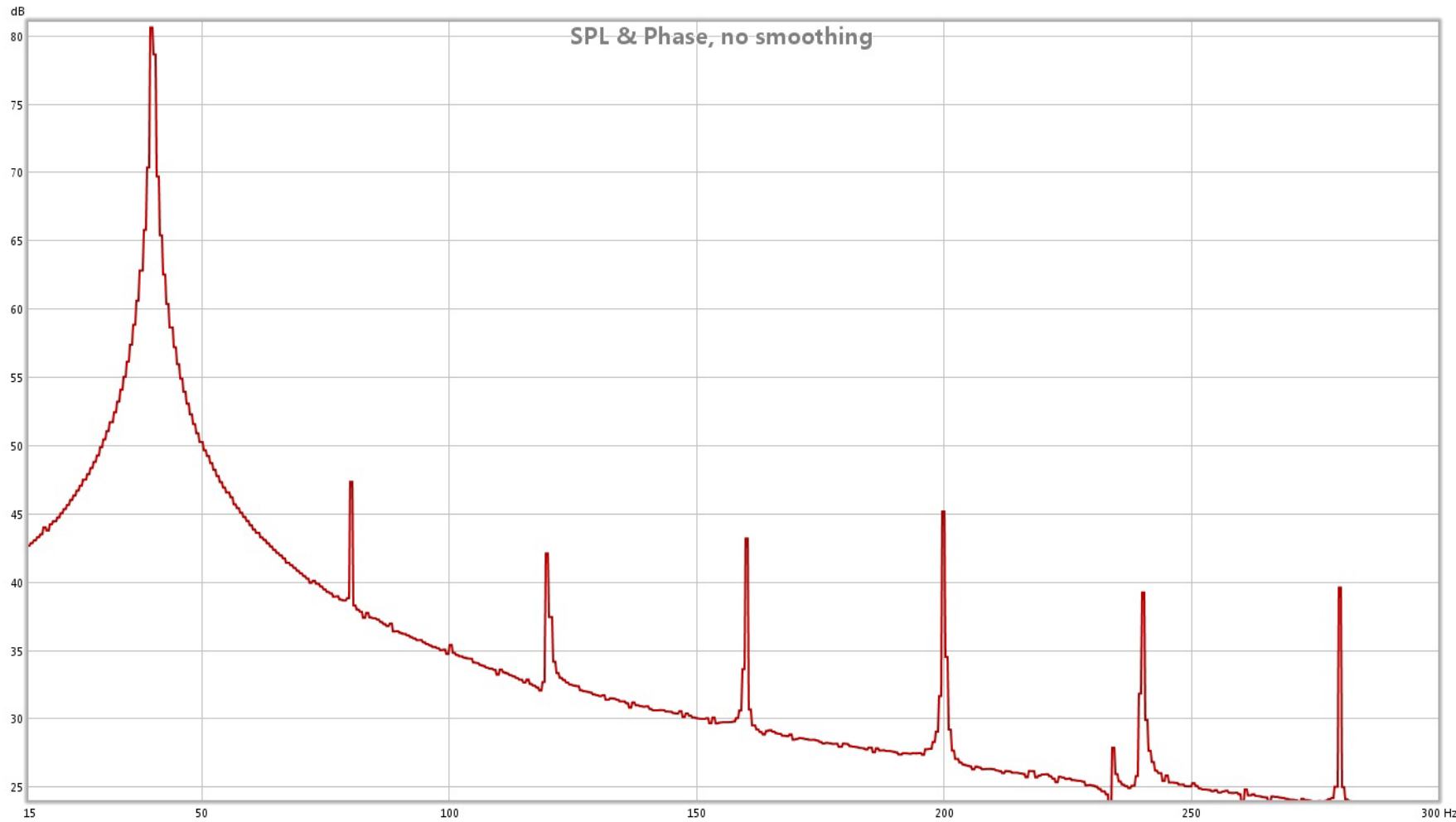


# Setup 1

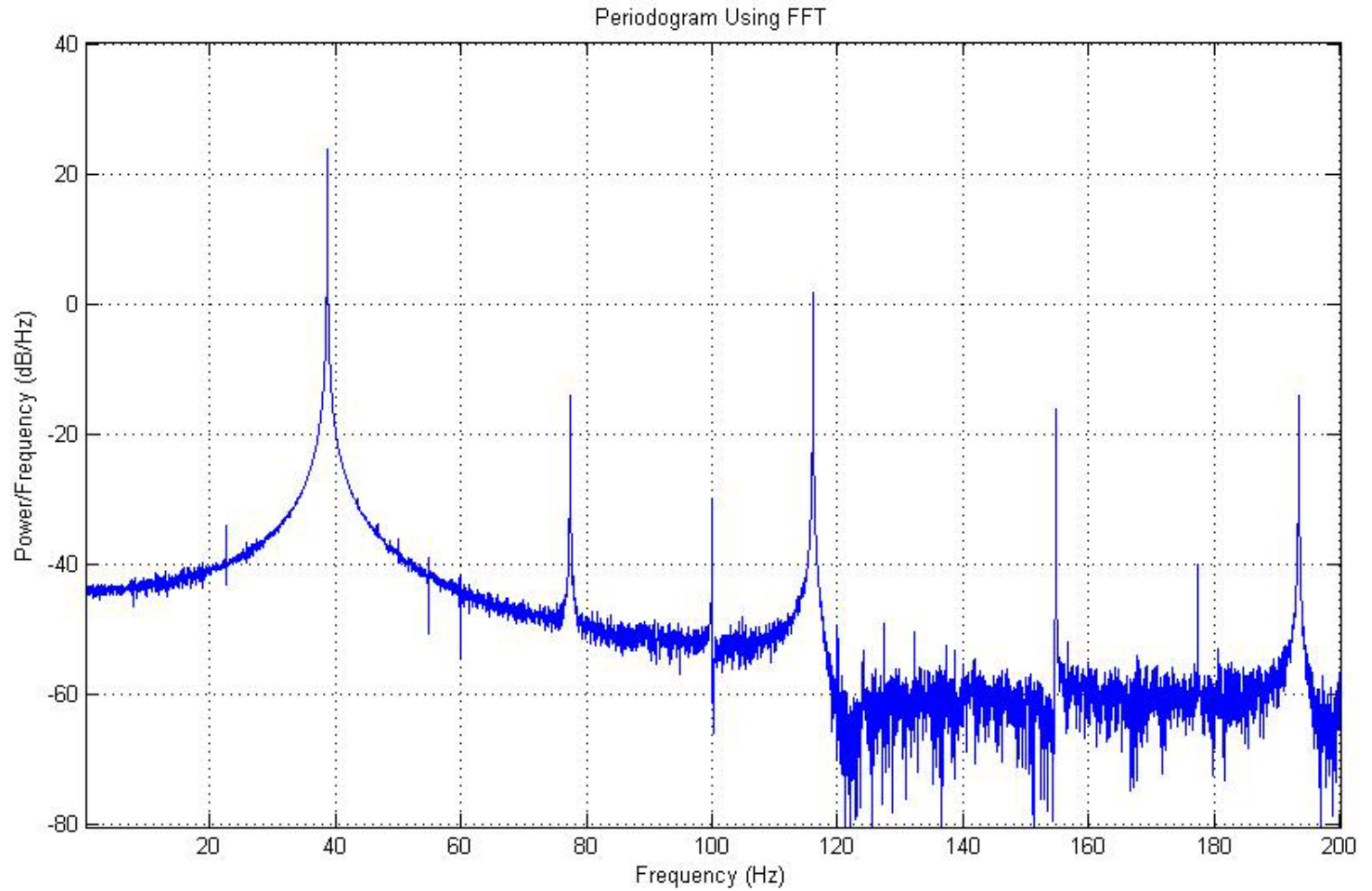




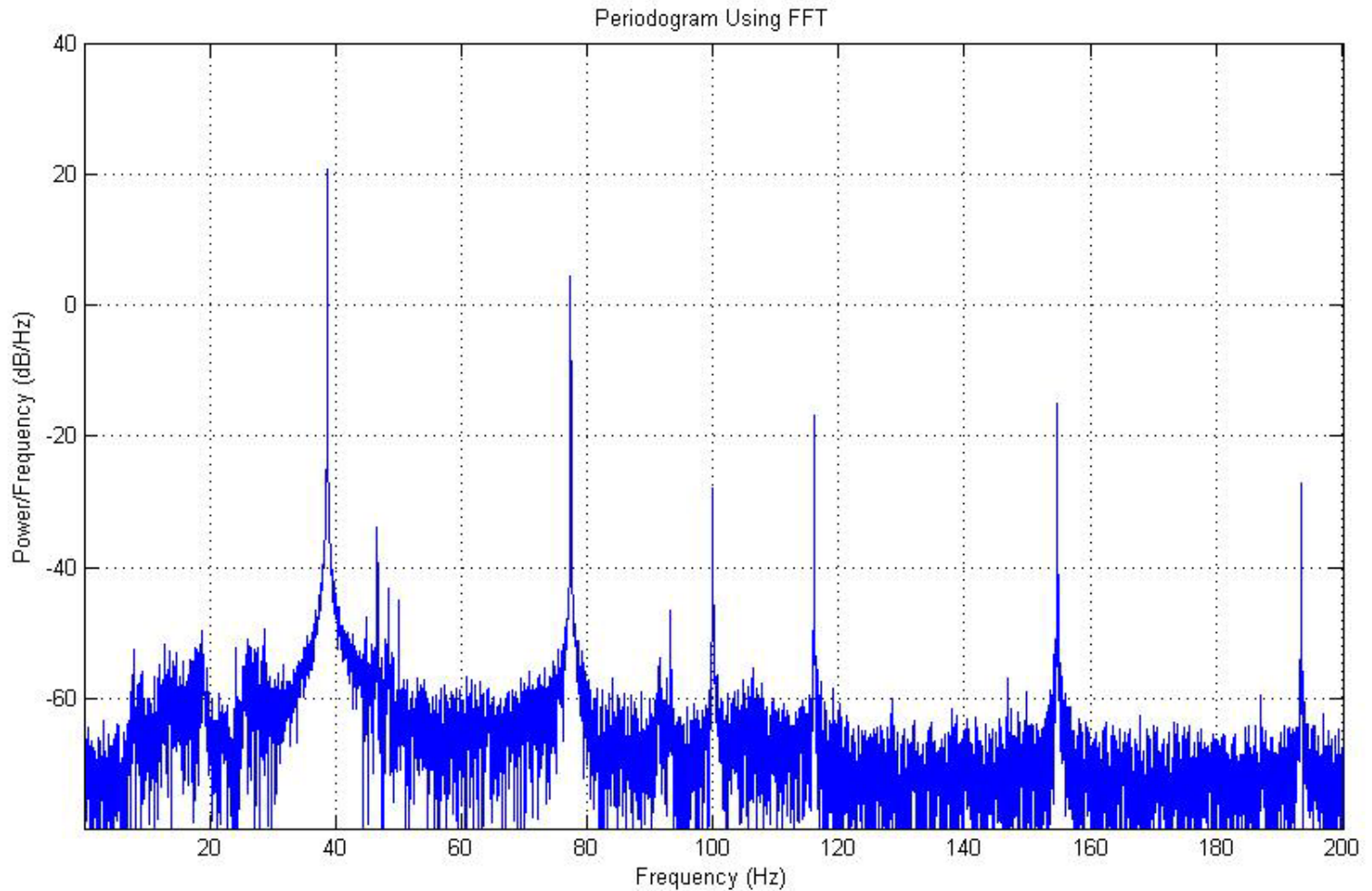
# Setup 1



# Setup 1



# Setup 1



# Setup 1

- Outer ring of cone still add distortion
- “Better” cones gain more from a feedback loop

# Setup 1

- Suppress disturbances due to non-linearities
- Reduce the cone break-up