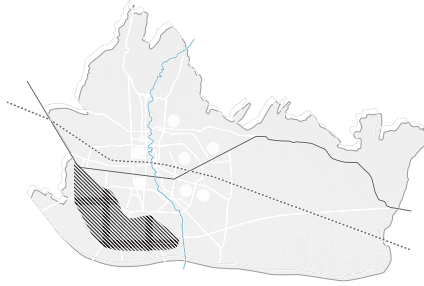


CONTEXT | CHARACTERISTICS



INDONESIA
JAVA, BANDUNG



BANDUNG & COMMERCE
 ■ TEXTILE FACTORIES
 ○ BIG MALLS

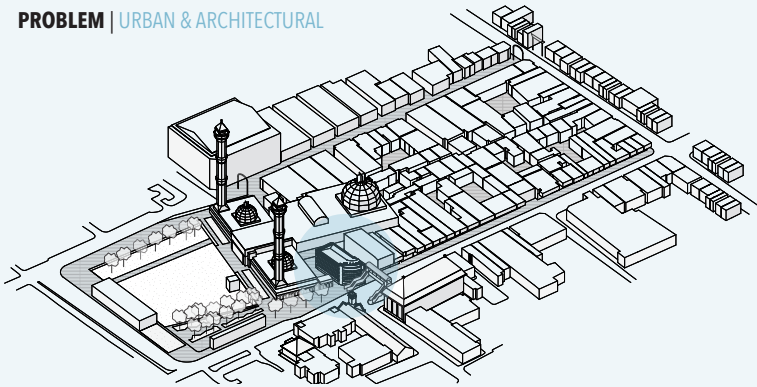
CENTER OF COMMERCE
PASAR BARU

QUALITY TAILORS
JL. ASIA-AFRIKA

FAST FASHION
JL. DALEM KAUM



PROBLEM | URBAN & ARCHITECTURAL



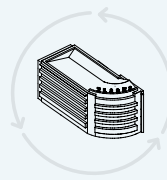
CONTEXT
HOSTILE SHOPPING
AREA

TECHNIQUE
DISCONNECTED,
UNSUSTAINABLE BUILDINGS

PROGRAM
CRAFTSMANSHIP &
INNOVATIVE INITIATIVES
ARE UNACCESSIBLE

AMBITION | SUSTAINABLE ALTERNATIVE FOR SHOPPING

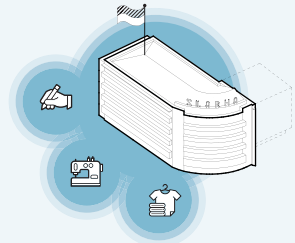
IN ORDER TO REVITALIZE THE URBAN AREA OF ALUN ALUN, SHARED HERITAGE AND ITS PASSIVE CLIMATE SYSTEMS WILL BE REUSED, EMPOWERING THE LOCAL CULTURE OF FASHION CRAFTSMANSHIP



REUSE
TECHNIQUE

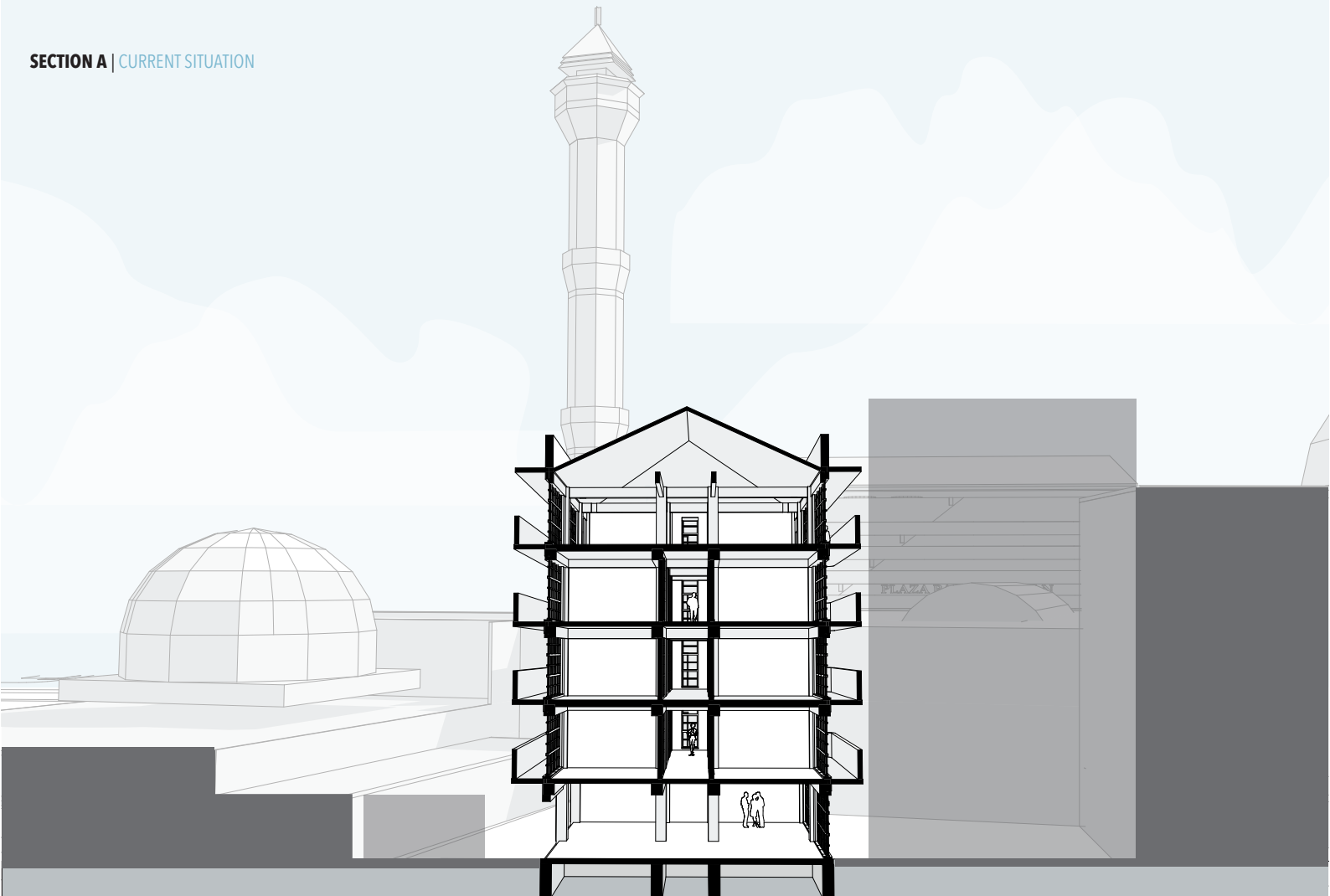


REDEFINE
PROGRAM

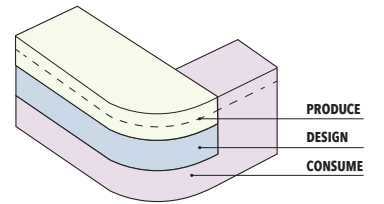
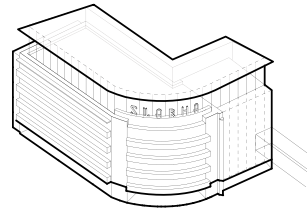
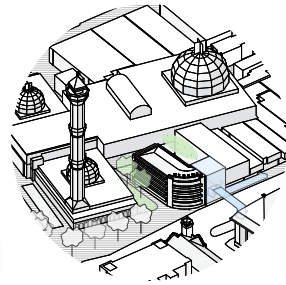
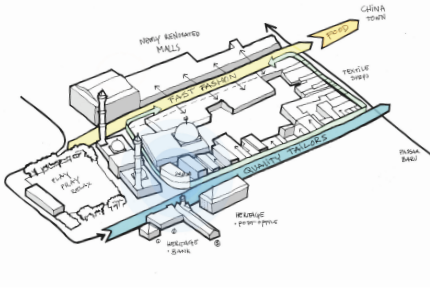


REVITALIZE
CONTEXT

SECTION A | CURRENT SITUATION



SOLUTION | URBAN & ARCHITECTURAL



URBAN PROGRAM | FASHION INCUBATOR

CONNECTING FAST FASHION AND QUALITY TAILORS
THE FOCUS LIES ON KNOWLEDGE, IDENTITY AND QUALITY

URBAN INTERVENTIONS | POCKET PARK & MARKET

REMOVE OBSTACLES, NEW BLOCK, BRIDGE, COURTYARD

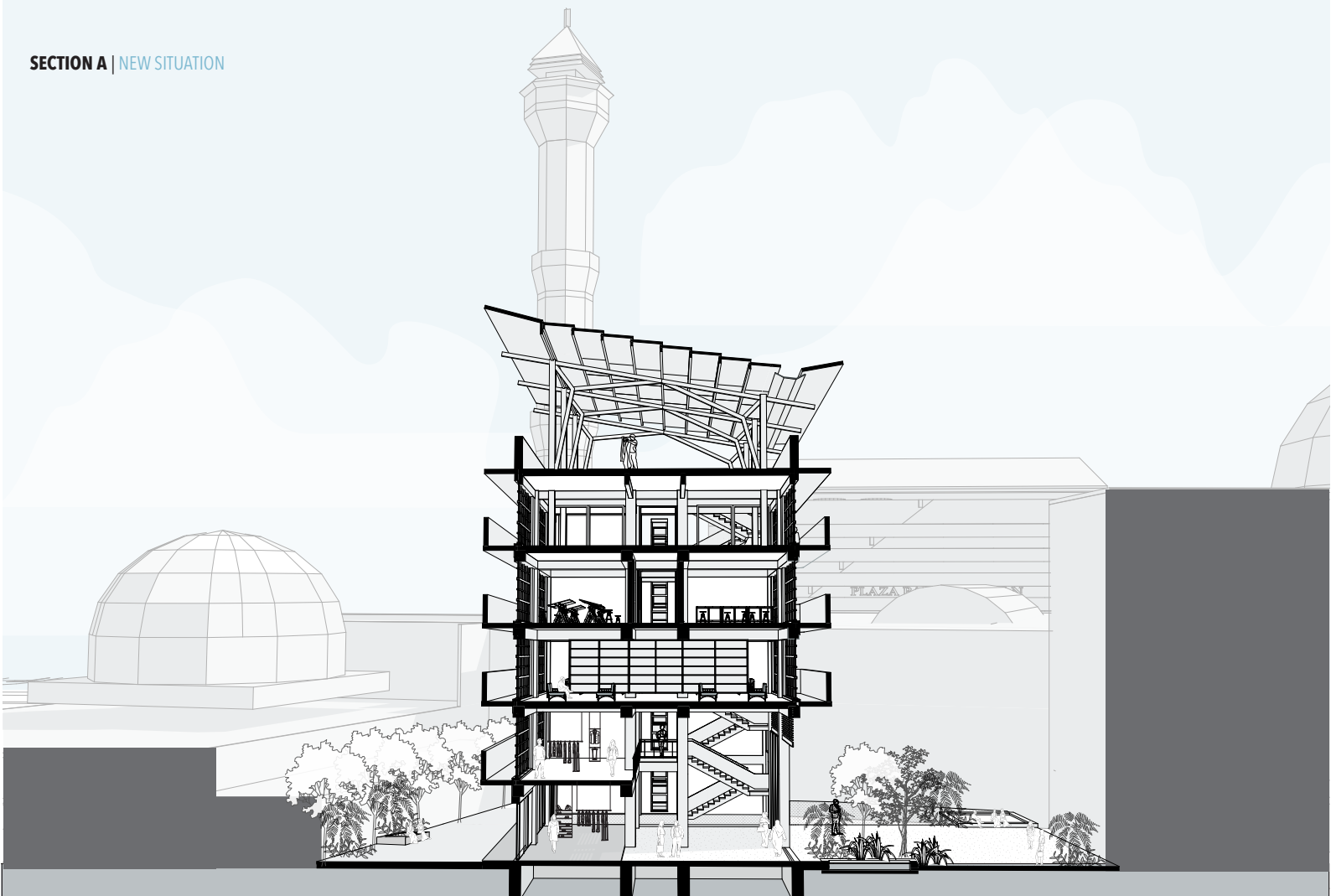
ARCHITECTURAL INTERVENTIONS | 5 INTERVENTIONS

FOCUS ON NEW ROOF, BODY: EXISTING & NEW,
BRIDGE, PLINTH, COURTYARD

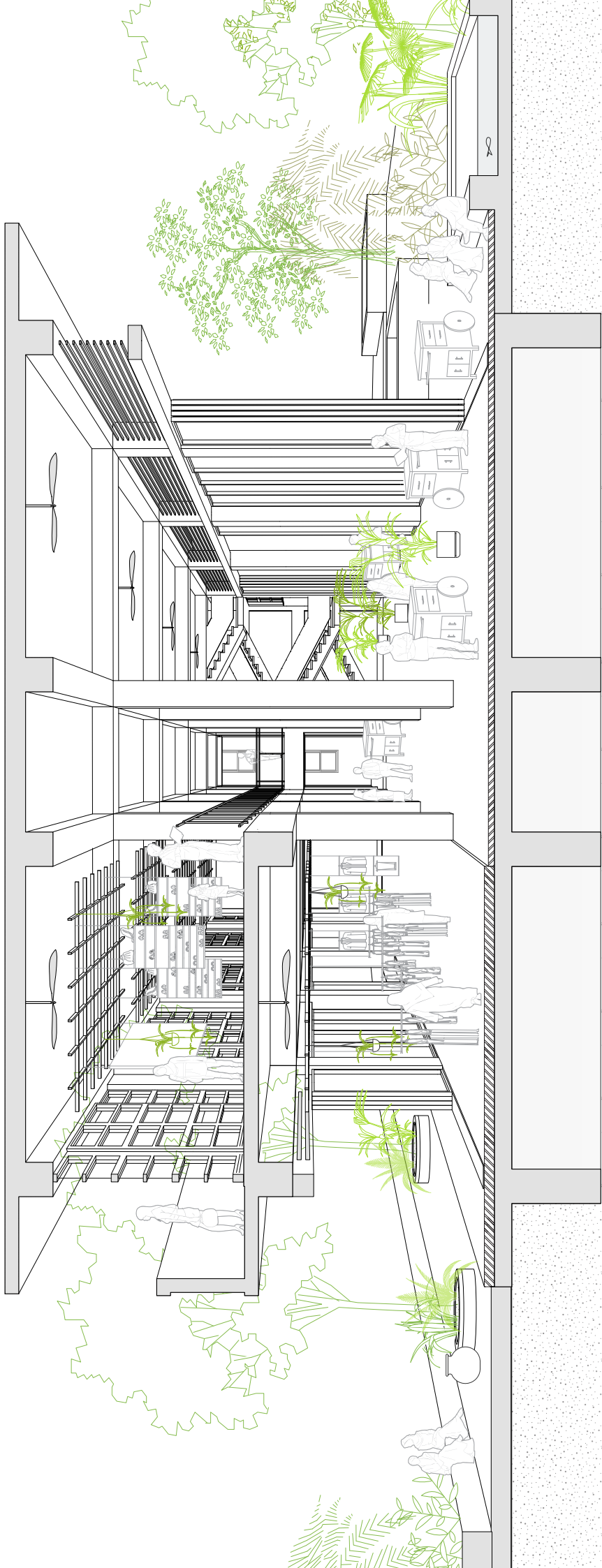
ARCHITECTURAL PROGRAM | DESIGNER VS CONSUMER

THE INCUBATOR PROGRAM INCLUDES USE OF MEETING ROOMS, DESIGN
STUDIOS, (CO-)WORKING SPACES AND MACHINES IN THE WORKSHOP.

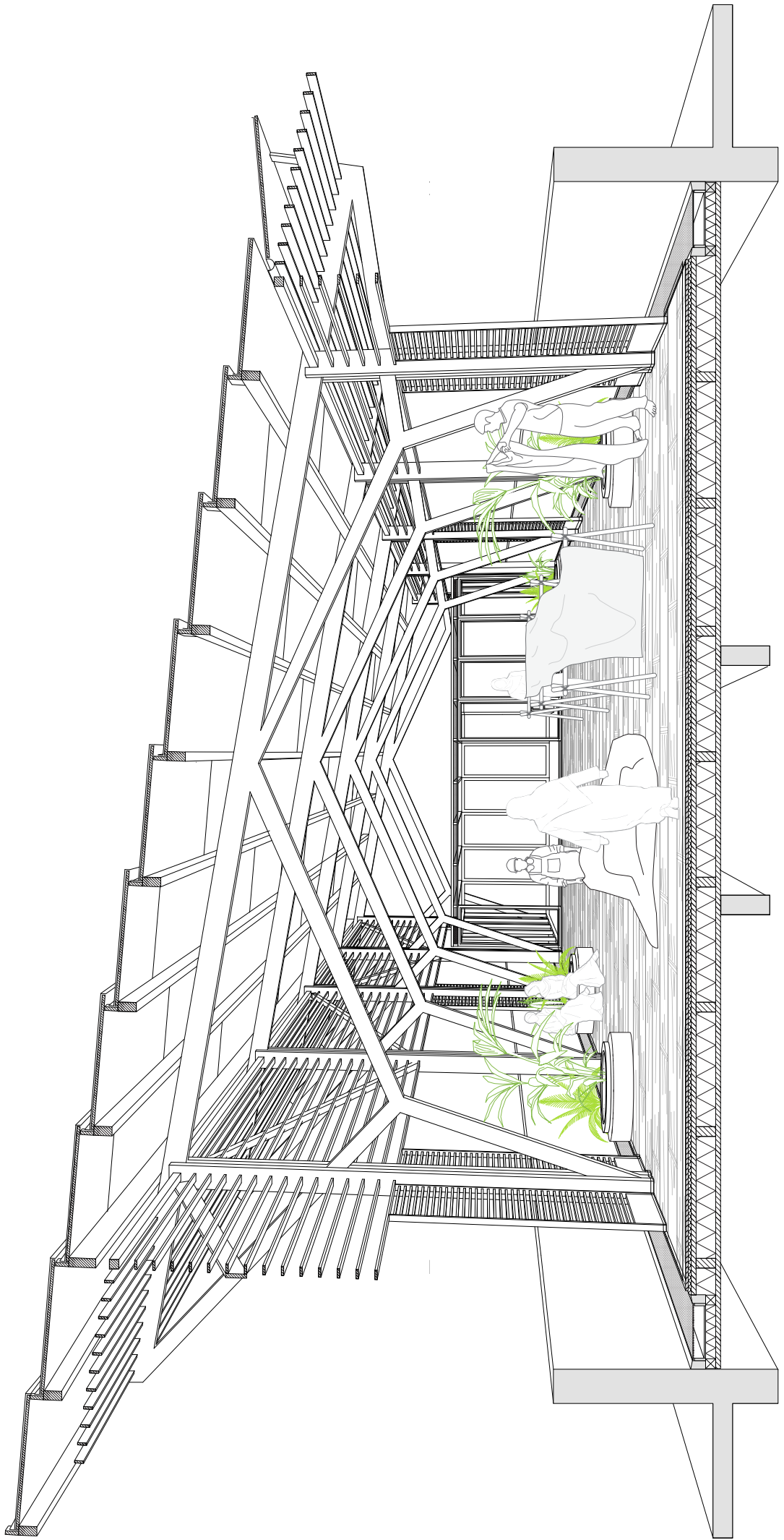
SECTION A | NEW SITUATION



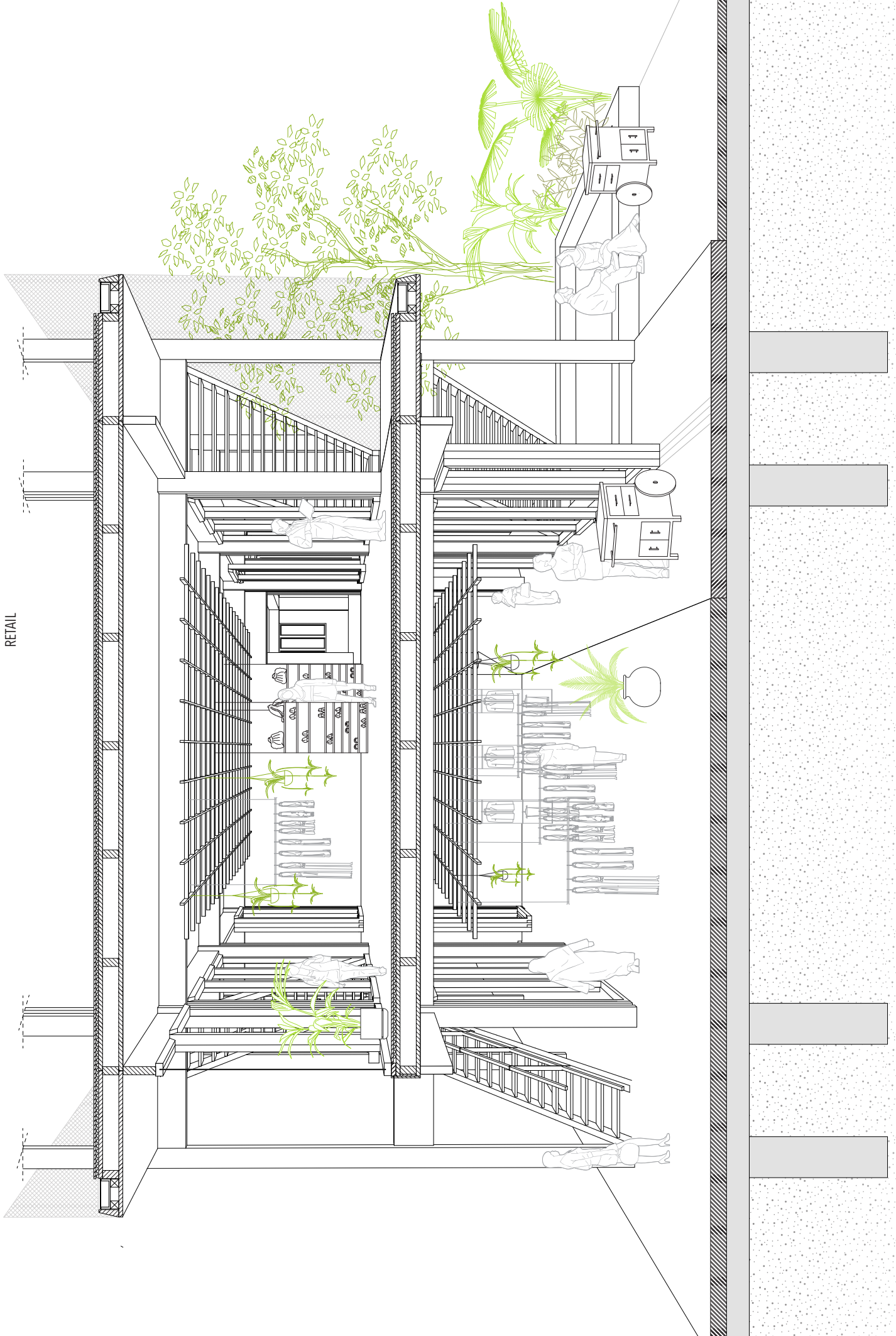
GROUND FLOOR EXISTING STRUCTURE
RETAIL



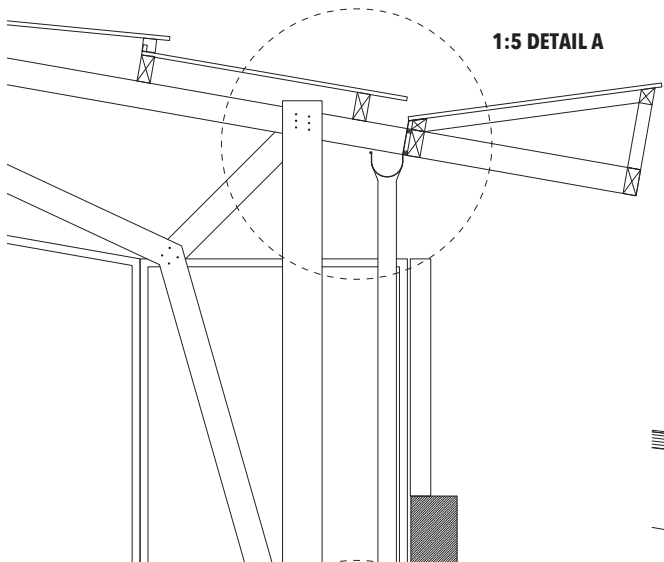
NEW ROOF
EDUCATION & FABRICATION



GROUND FLOOR NEW STRUCTURE
RETAIL

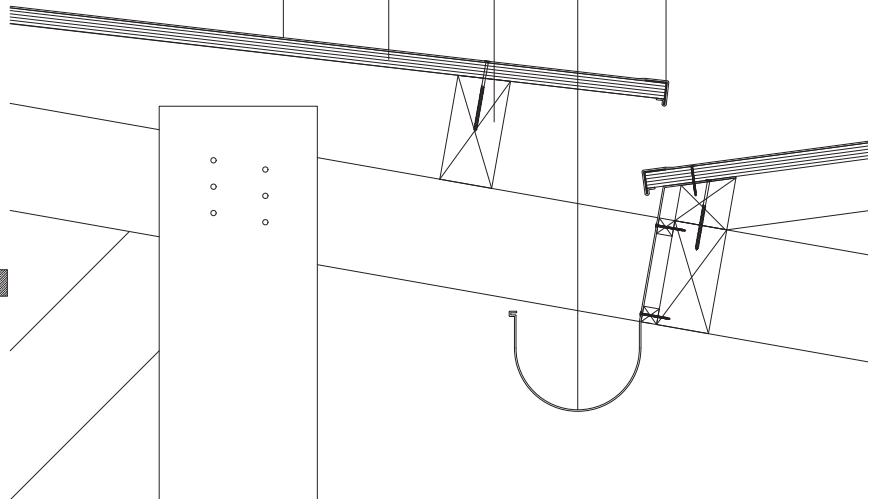


1:5 DETAIL A



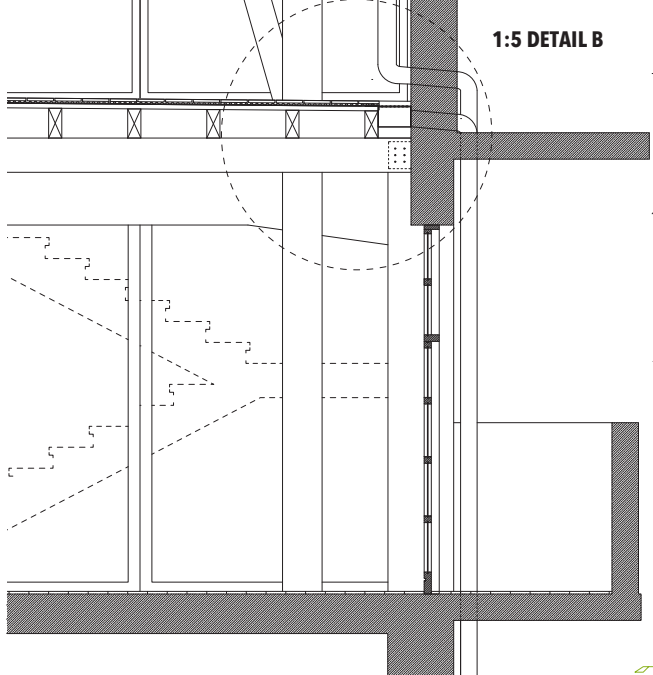
Marine plywood has 5 layers as opposed to the 3-layer standard plywood. Its adhesive is waterproof making it suitable for naval uses

Bituminous Sheeting 3mm
 Marine plywood decking 30mm
 Timber joist 100x200mm
 Rain gutter
 Steel angle 40x40mm for drip profile

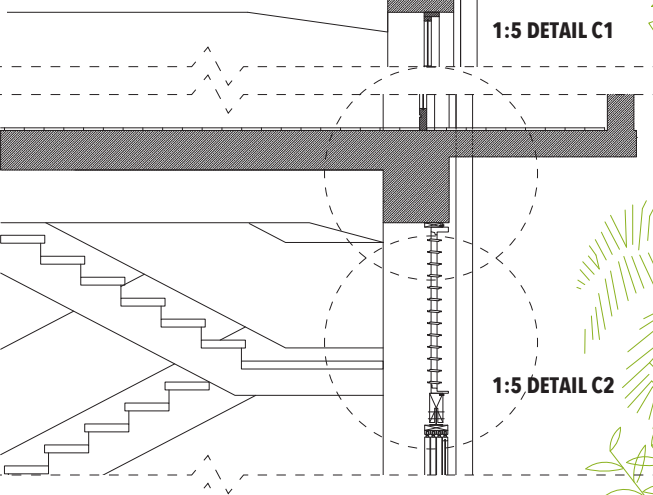


DETAIL A | ROOF + GUTTER 1:5

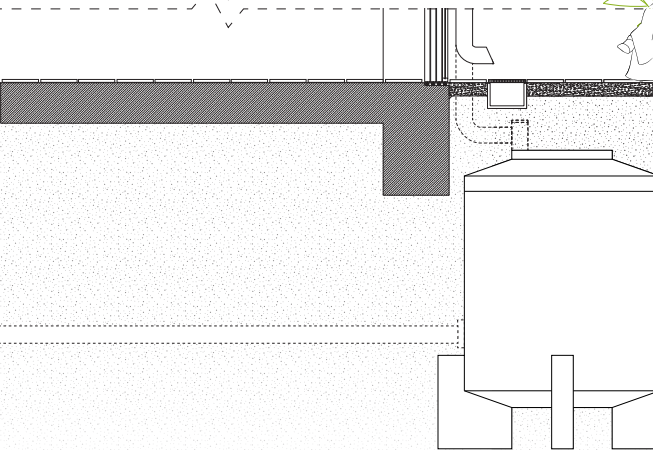
1:5 DETAIL B

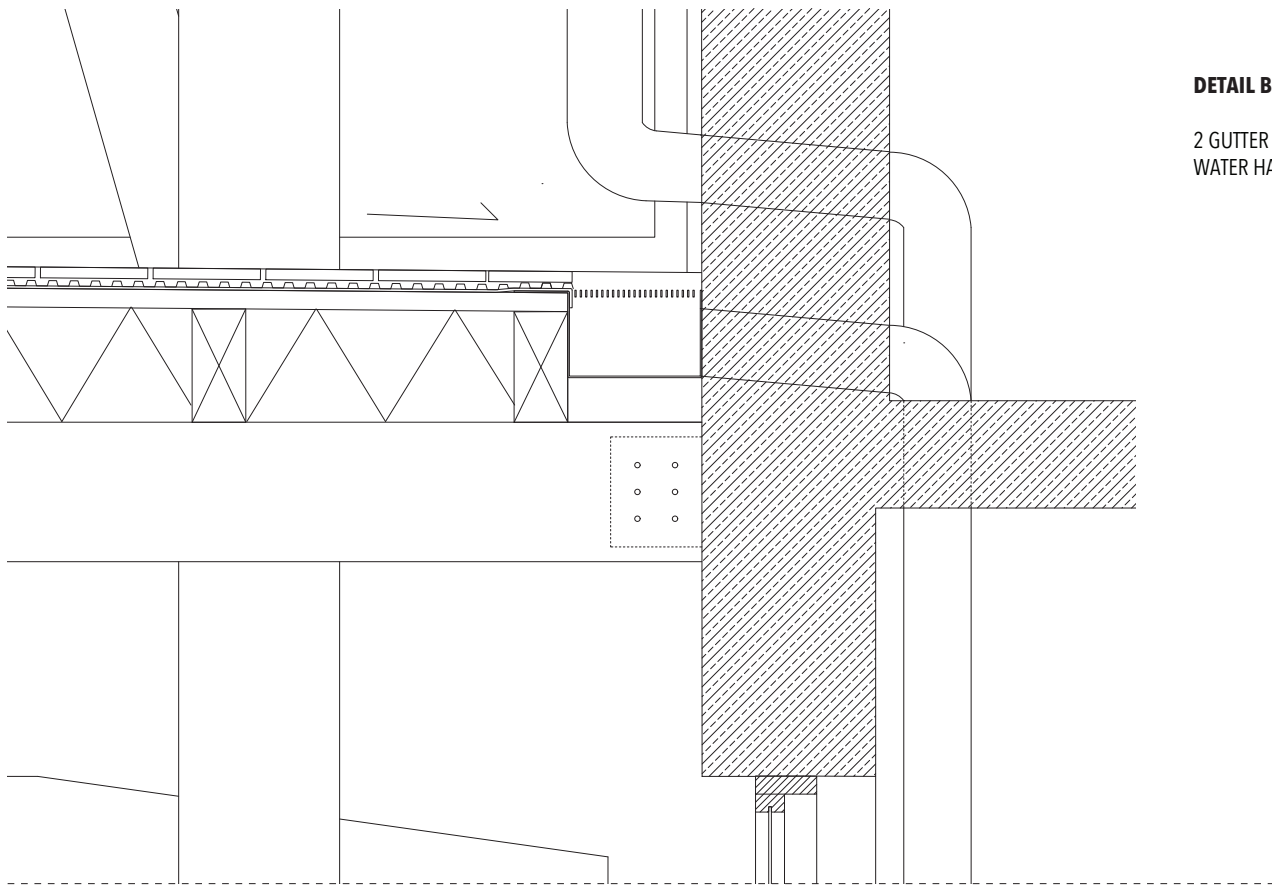


1:5 DETAIL C1



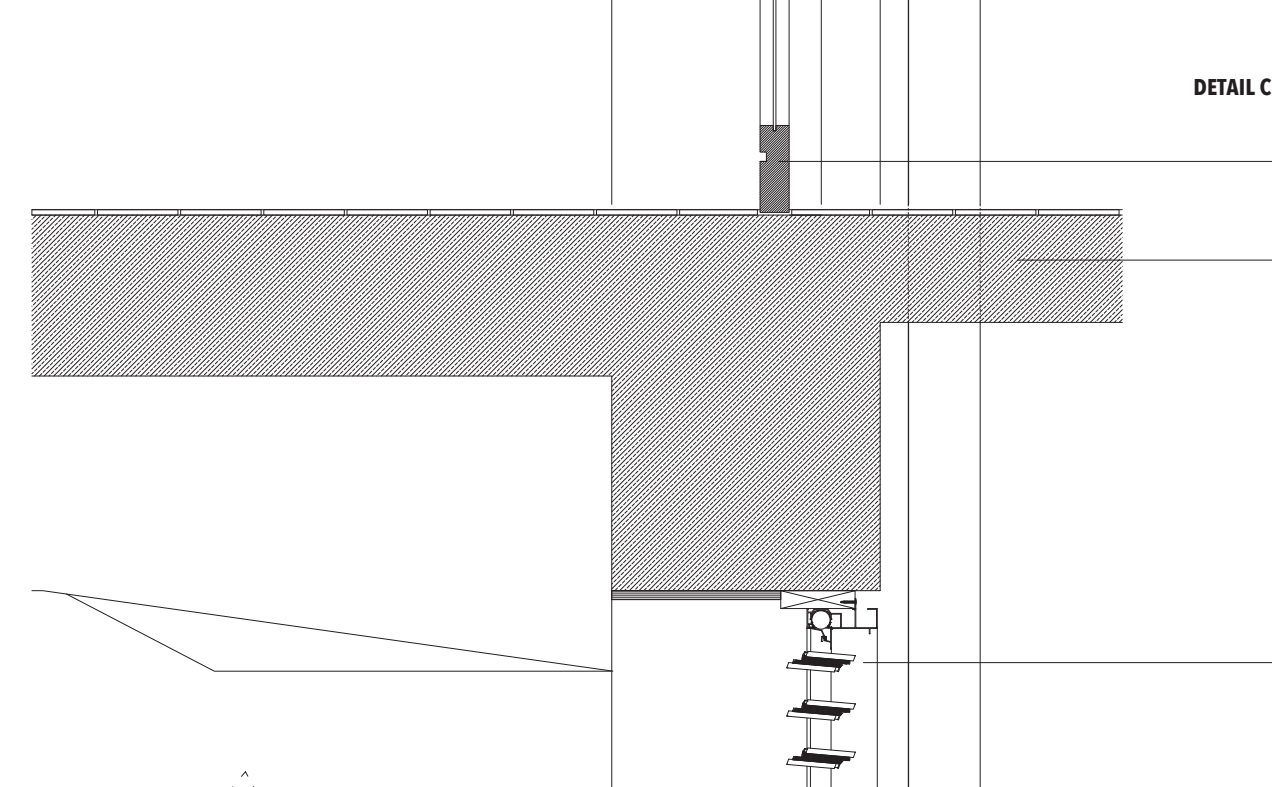
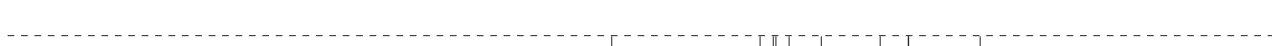
1:5 DETAIL C2





DETAIL B | CONNECTION NEW ROOF

2 GUTTER SYSTEMS:
WATER HARVEST + WATER DRAINAGE



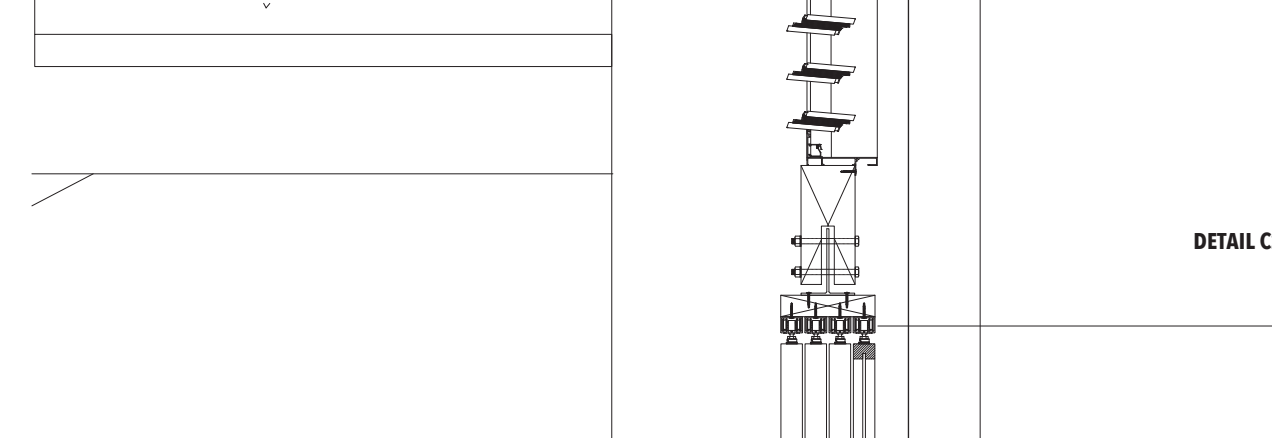
DETAIL C1 | BLINDS

Existing sliding door profile

Existing concrete structure

ALTAIR 102 LOUVRE
IN EASYSCREEN
POWERLOUVRE 131
SURROUND FRAME
WITH TIMBER
BLADES

13-BLADE SYSTEM



DETAIL C2 | HANGING DOOR PANELS

Henderson sliding door - max 120g blade weight