

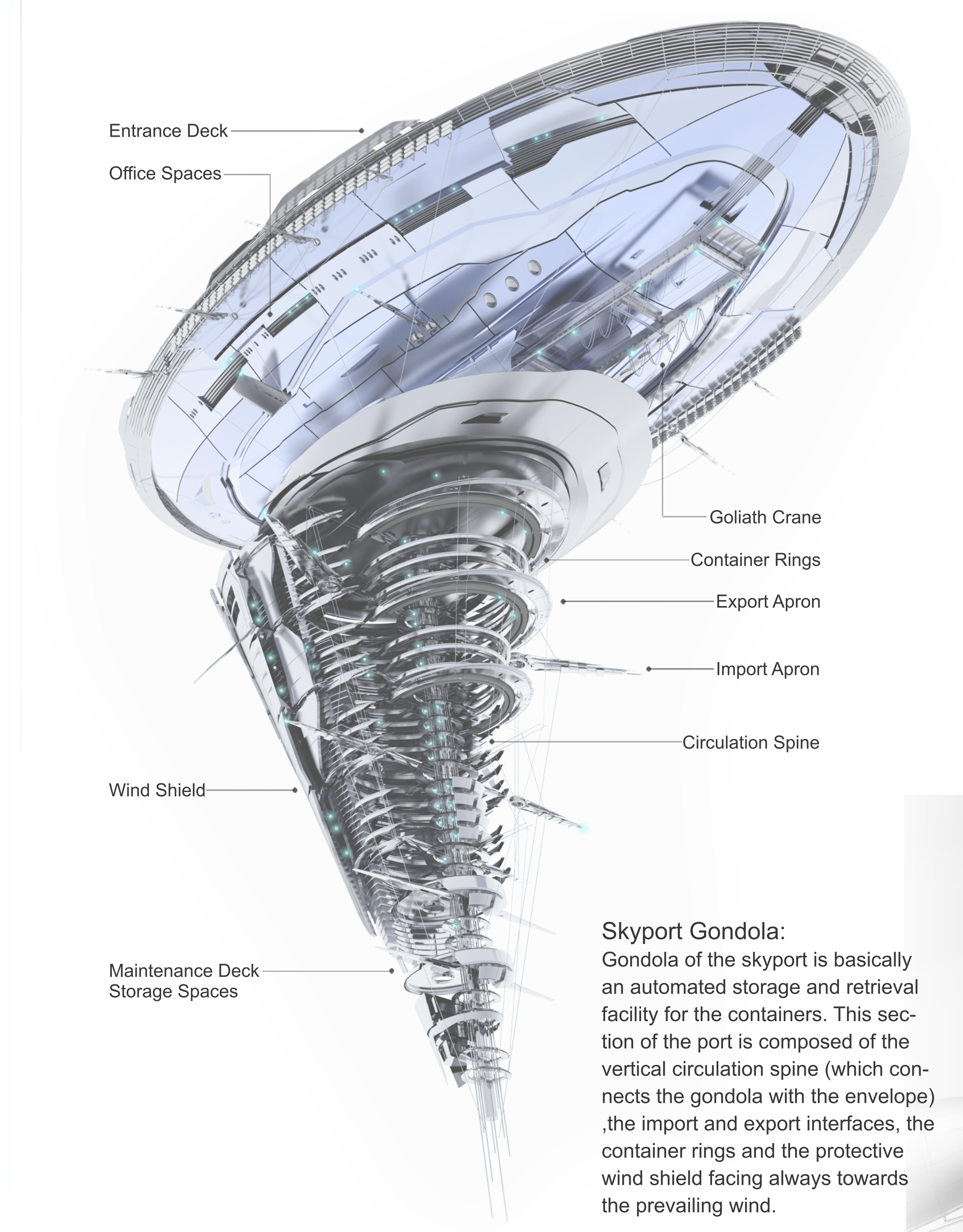
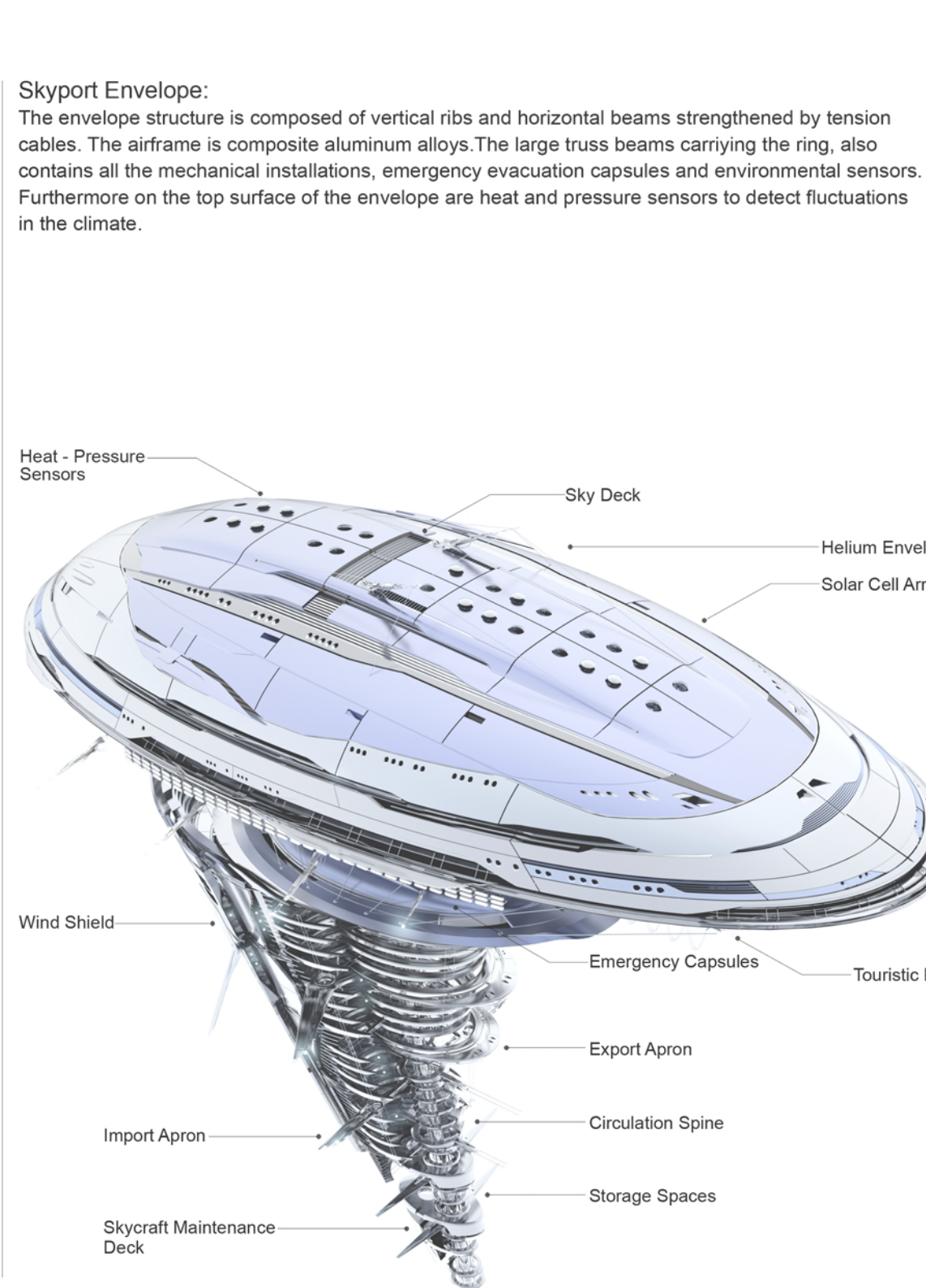
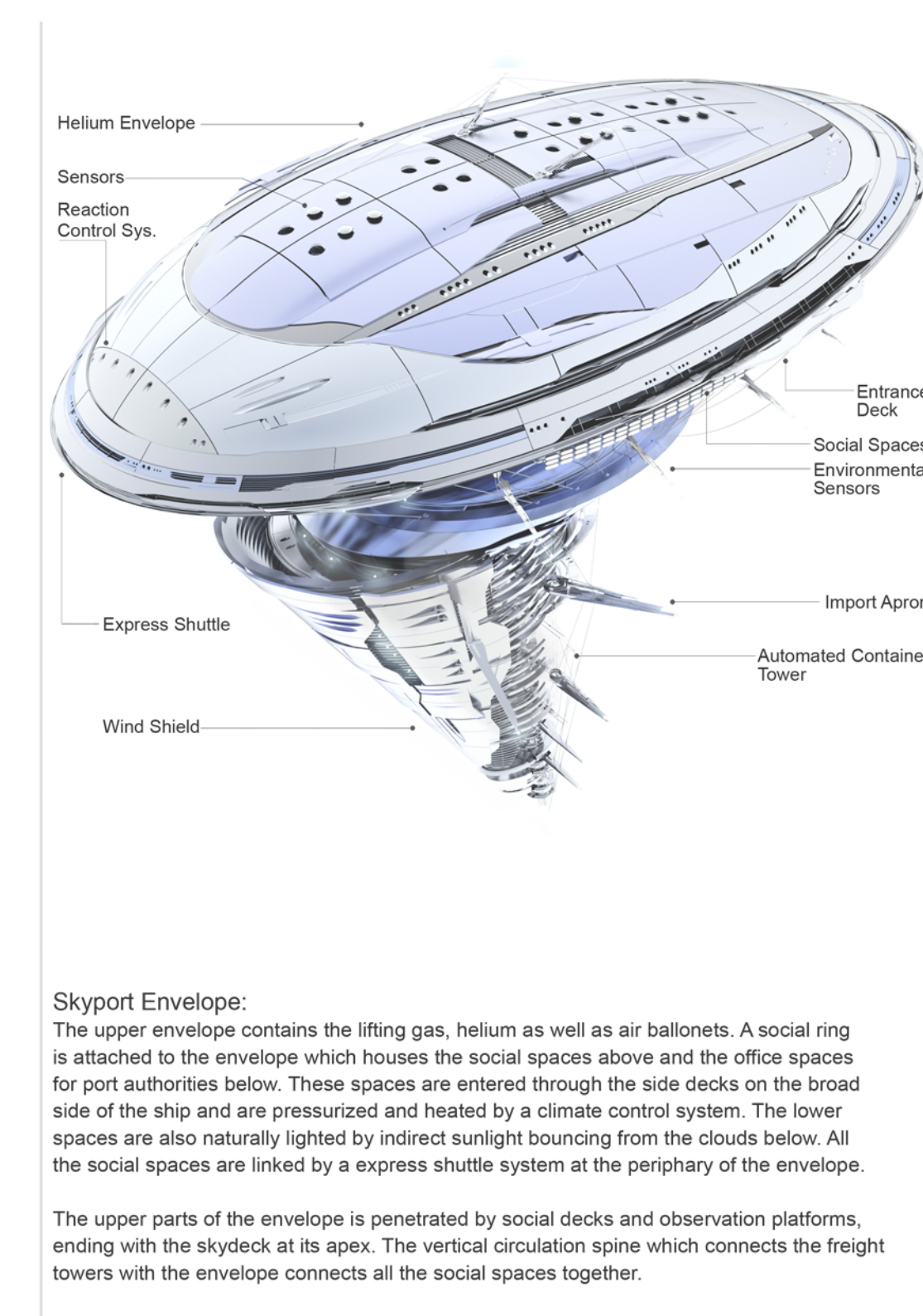
Skyport Gondola:
The gondola section of the port is an automated robotic storage facility for containers. However this facility is penetrated by observation and viewing platforms for technicians as well as common people so that the kinetic energy and motion in the design, the flow of containers, unmanned, docking skycrafts and the relentless labour of robots are perceived by the eye both from the inside and outside of the port.

Skyport - Aerial Robotic Container Port
Skyport is an automated flying container port based on hybrid - airship and robotic technologies.

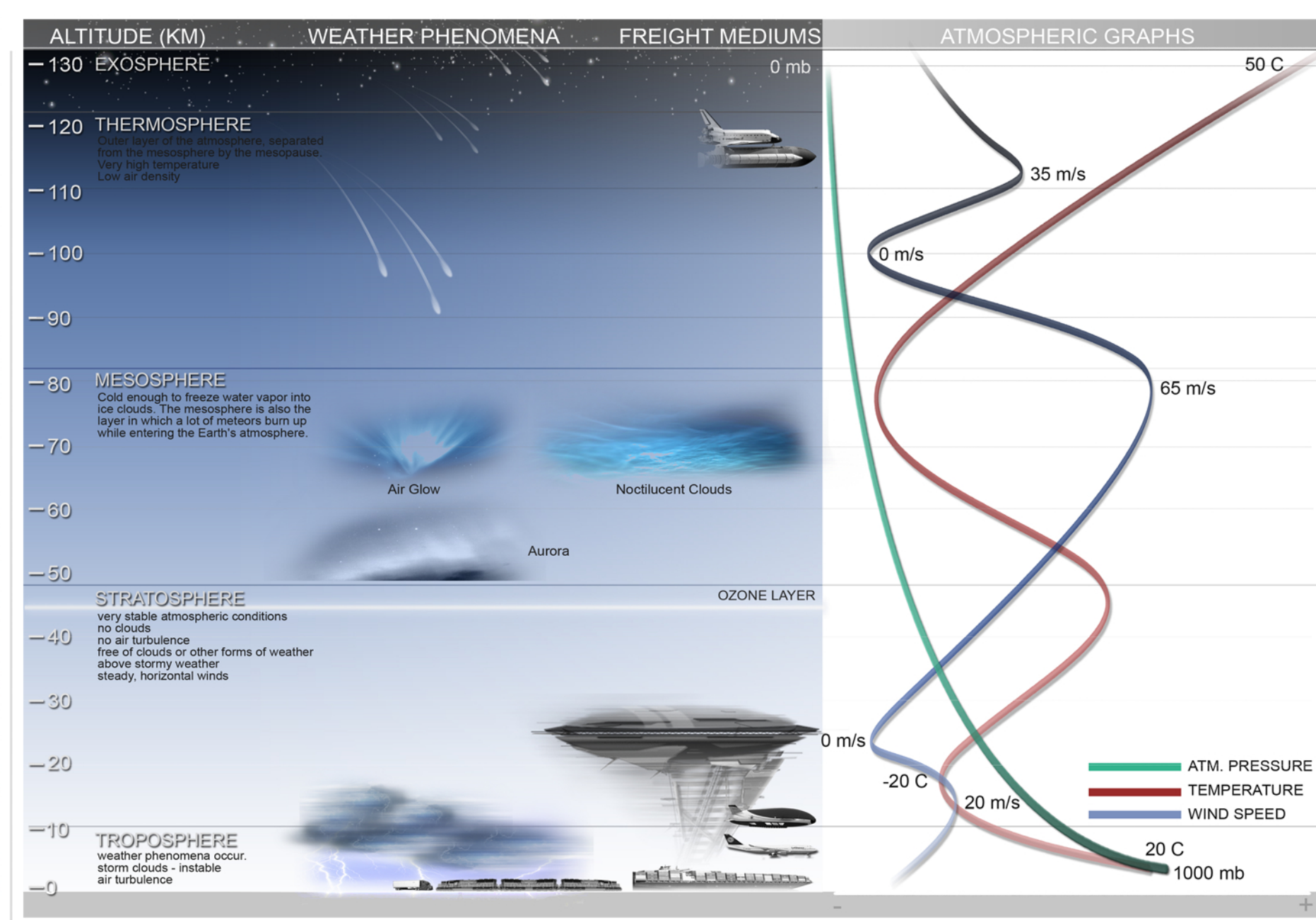
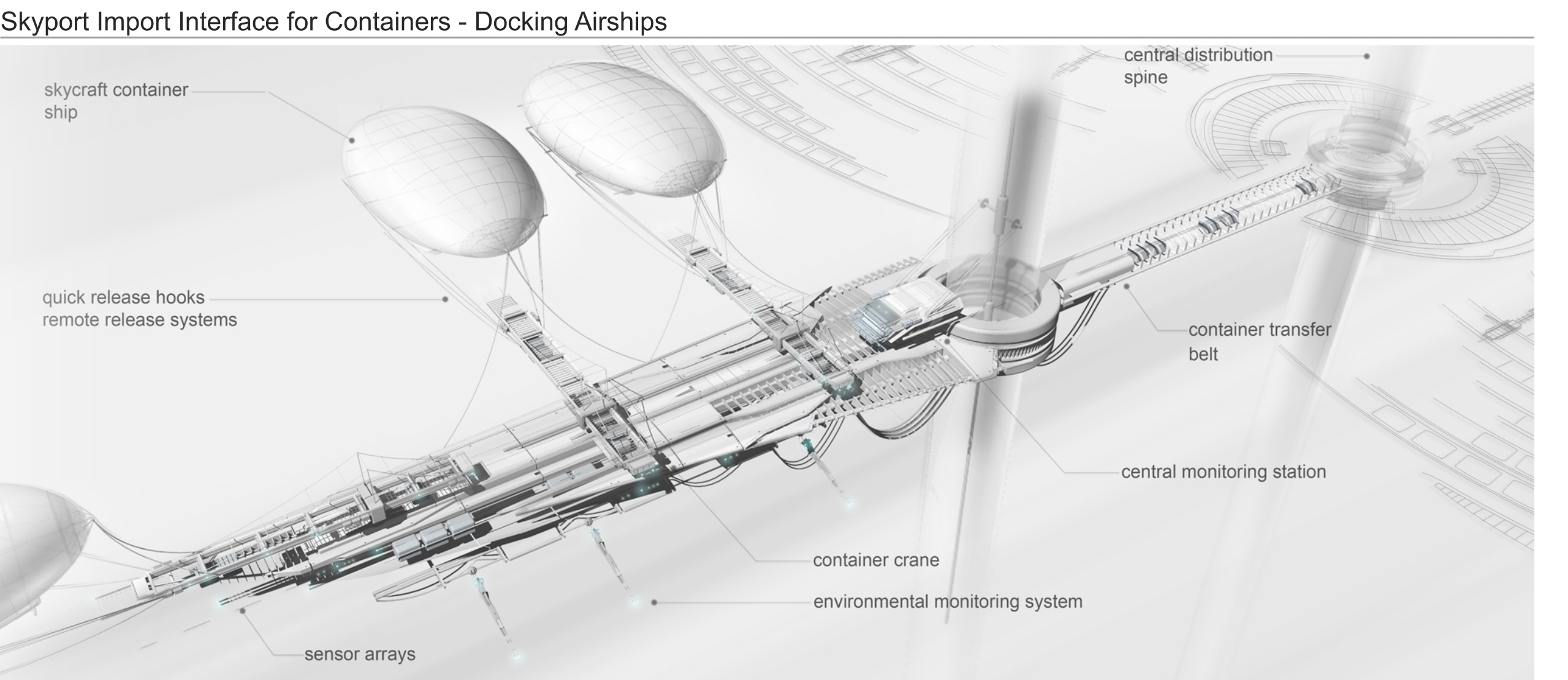
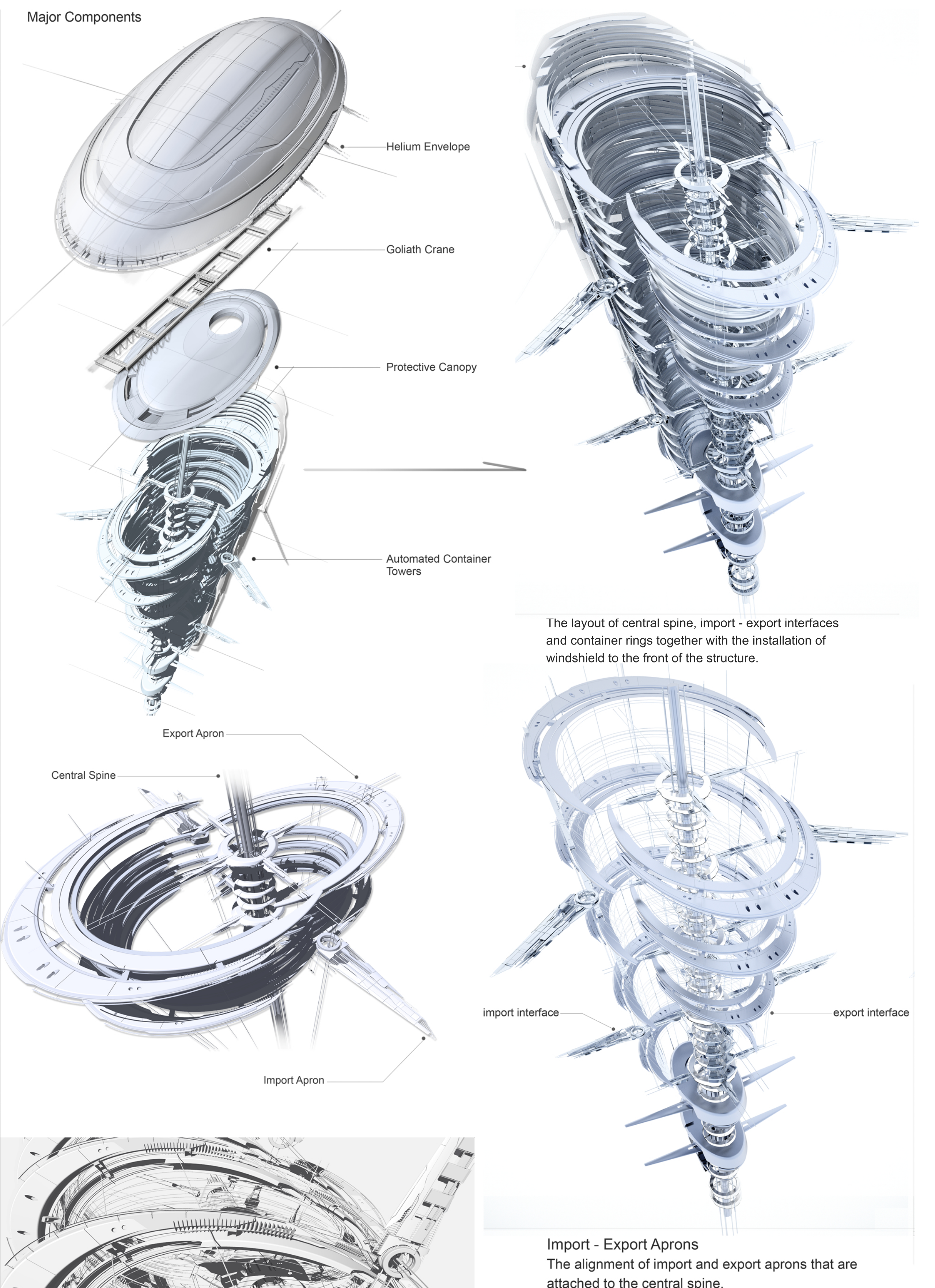
It is part of a global, aerial distribution network called Skyraft, created in order to replace current freight transportation modes with a system that is more efficient in terms of energy and flexibility, and has a minimum impact on the natural environment.

The airship is composed of the automated, container storage towers in the gondola section and the social spaces on the upper envelope section. Although the two parts are structurely seperated, spacially, social and automated spaces interpenetrate and infuse into one another. The envelope is surrounded by a social ring which houses the recreation and office spaces, and also is penetrated and cut by observation and viewing decks.

The robotic facilities are relatively deisgned transperant and contain also observation decks so that the kinetic flows, of people and freight can be percieved by naked eye.



Skyport Gondola:
Gondola of the skyport is basically an automated storage and retrieval facility for the containers. This section of the port is composed of the vertical circulation spine (which connects the gondola with the envelope) ,the import and export interfaces, the container rings and the protective wind shield facing always towards the prevailing wind.



Container Specifications and Distribution of Payload		
Shipping Container	Specifications 2.5 x 2.5 x 12 meters Volume: 68 m ³ Max. Gross Weight: 20 tons Empty Weight: 2 tons	Fitted inside TEU Compatibility with existing logistic modes
Air Freight ULD	1.5 x 1.5 x 3 meters Volume: 15 m ³ Max. Gross Weight: 3 tons Empty Weight: 180 kg	empty container light container heavy container (refrigerated)
Skyport Container	3 x 3 x 3 meters Volume: 27 m ³ Max. Gross Weight: 6 tons Empty Weight: 100 kg	Different translucent containers will differ in color according to their cargo and weight.

