

**Roof construction**

- Vegetation layer
- Filter fleece
- Drainage layer
- Vapour barrier
- Insulation 150 mm
- Wooden counter-floor
- Sound insulation
- Battens
- Wood-cement particleboard
- Wooden joists 300x150 mm

**Wall construction**

- Masonry 'module 50' 190x90x50
- Ventilated cavity 40 mm
- Thermal insulation 180 mm
- Concrete wall 150 mm
- Plaster

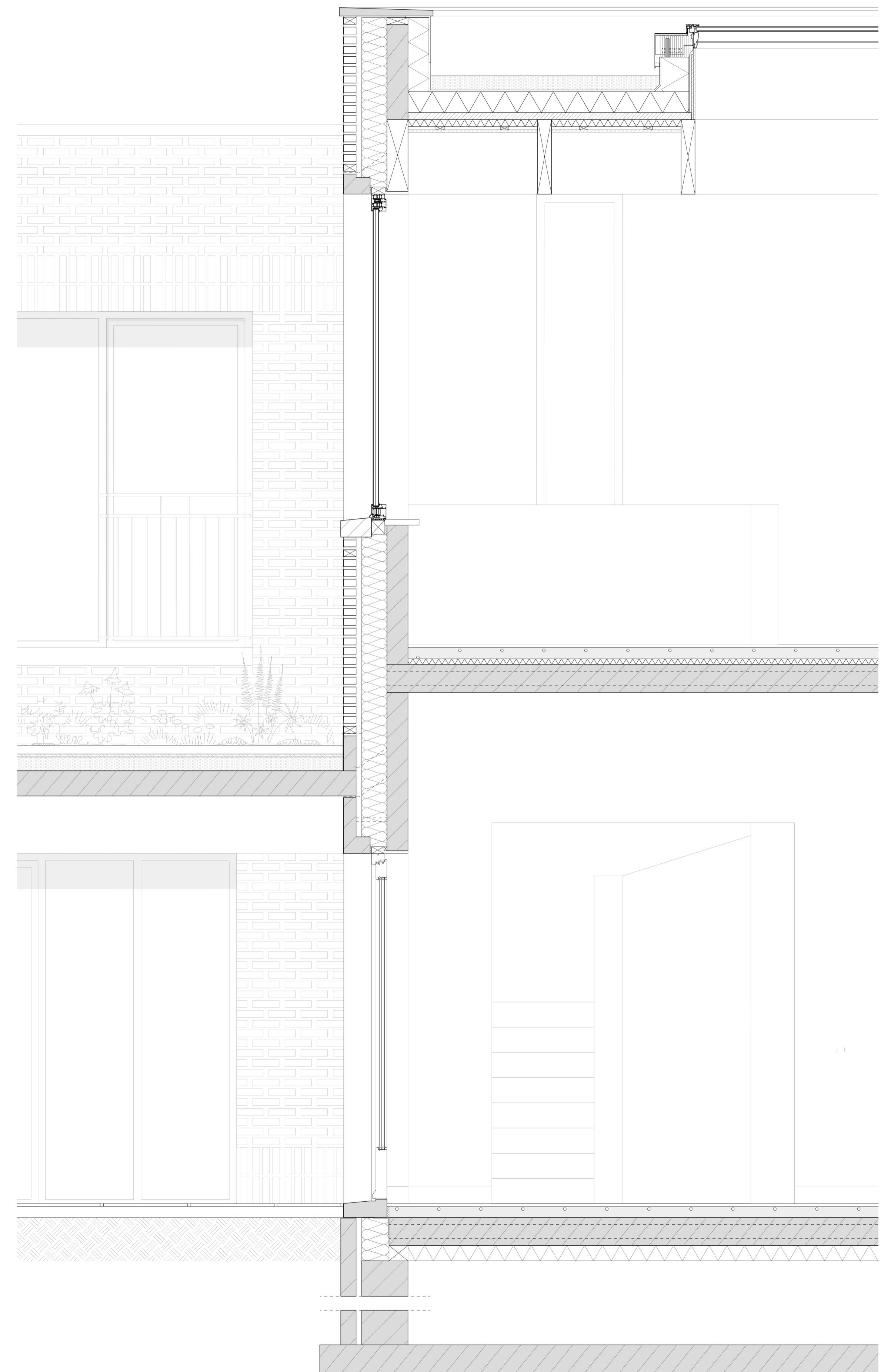
**Window construction**

- Aluminium window frame
- Aluminium french balconies
- Wooden interior lining
- Natural stone window sill
- Concrete lintel or prefabricated brick/concrete lintel

**Floor construction**

- Floor covering (wooden flooring or tiles)
- Screed with underfloor heating 80 mm
- Impact sound insulation 40 mm
- Hollow-core concrete unit 200 mm
- Plaster

**Detail**  
1:60 vertical and horizontal section and elevation of a fragment of the facade, showing the covered exterior space and the interior of a bedroom and living area.



Roof construction a

- Gravel layer
- Vapour barrier
- Insulation 150 mm
- Wooden counter-floor
- Sound insulation
- Battens
- Wood-cement particleboard
- Wooden joists 300x150 mm
- Velux modular skylight

Roof construction b

- Vegetation layer
- Filter fleece
- Drainage layer
- Vapour barrier
- Insulation 150 mm
- Wooden counter-floor
- Sound insulation
- Battens
- Wood-cement particleboard
- Wooden joists 300x150 mm

Wall construction

- Masonry 'module 50' 190x90x50
- Ventilated cavity 40 mm
- Thermal insulation 180 mm
- Concrete wall 160 mm
- Plaster

Window construction

- Aluminium window frame
- Wooden interior lining
- Natural stone window sill
- Concrete lintel

Floor construction

- Floor covering (wooden flooring o
- Screed with underfloor heating BU 111111
- Impact sound insulation 40 mm
- Hollow-core concrete unit 200 mm
- Plaster

