



Urban Riverfront Zutphen

Link between the river and the urban public spaces

Masterplan

The urban area of Zutphen has several qualities:

- Medieval center
- Location next to the river
- Contrast between urban- and natural riverside.

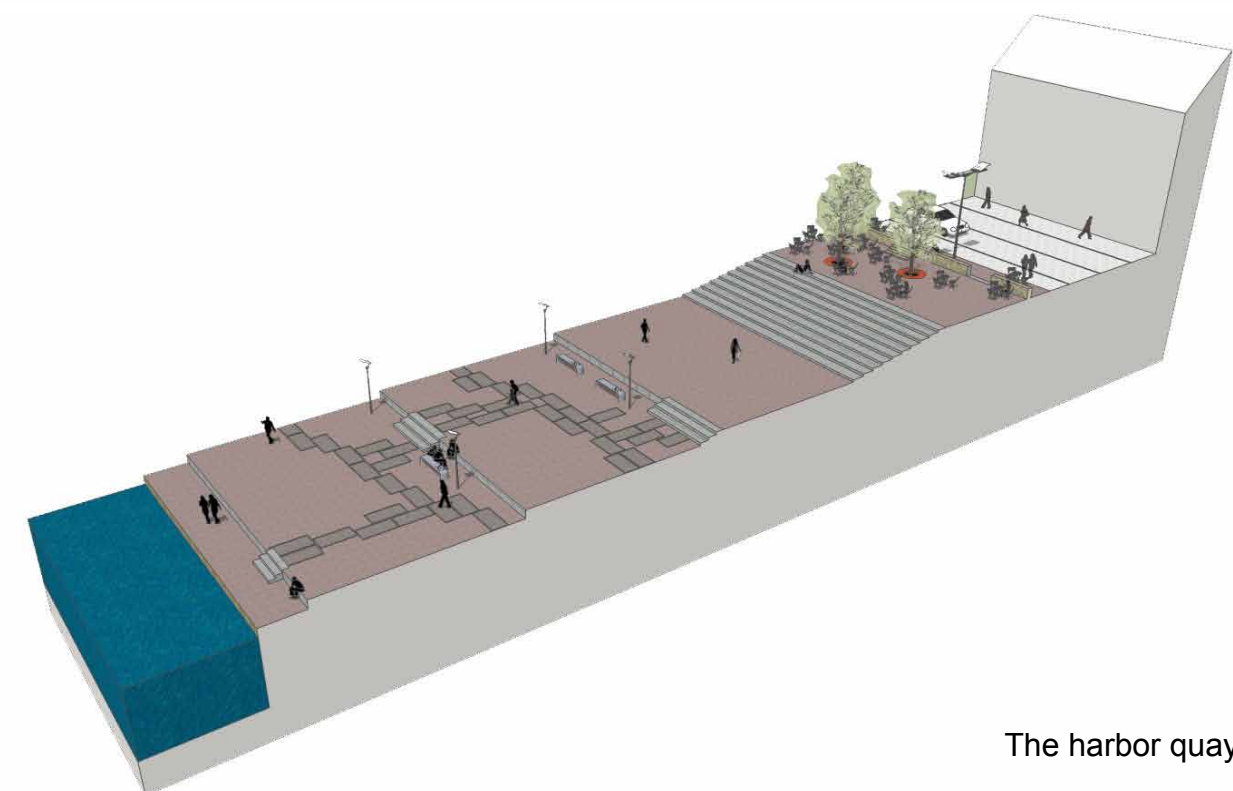
To improve the spatial quality of the city it is necessary to **strengthen the link between the city center and the river and improve the public space.**

New riverfront

On the north side the quay has a green, informal character. Further to the south this character changes into a more formal harbor area. Height differences are integrated on the riverfront. Besides more room for the river this intervention creates a better view on the river and more experience of the water. Close to the buildings is space for terraces. On the south side the public riverfronts end with a park and a marina.



The green quay



The harbor quay



Height differences on the quay



Space for terraces



Masterplan riverfront



Medieval center



Public riverfront



Natural riverside

Water safety

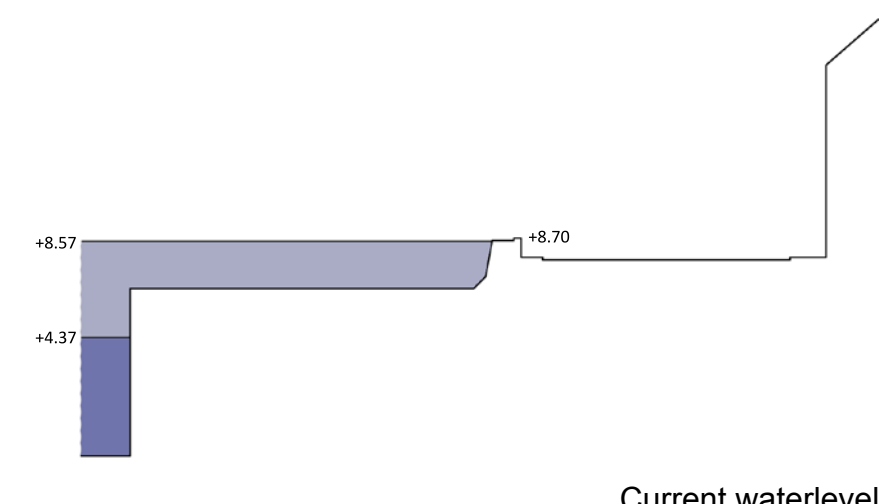
Climate change causes an increase in the discharge of river water. The profiles show measures are needed in Zutphen, especially for the long term interventions are necessary.

For the long term (2050) the high water level has to be lowered with 20 to 40 cm.

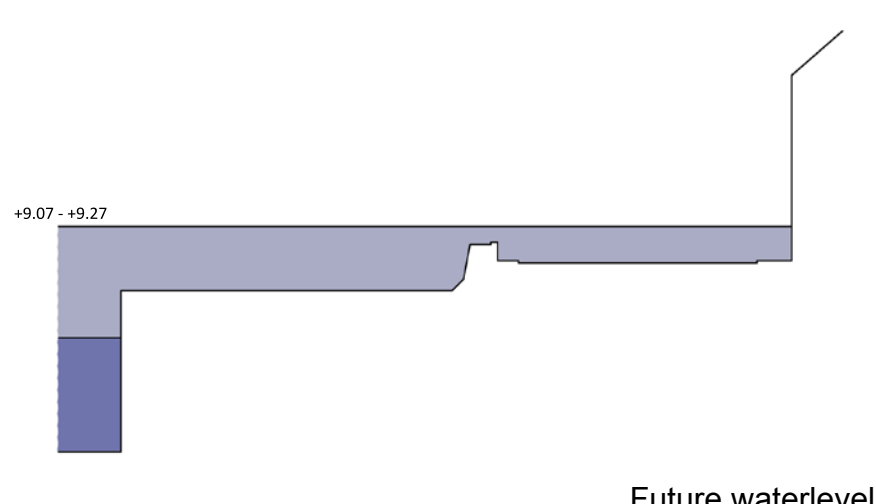
In the current situation the bottleneck in the river is located near the bridge.

In the proposed intervention different 'Ruimte voor de rivier' solutions are applied: removing obstacles, shifting the dike back and lowering the quay. The masterplan is based on this intervention.

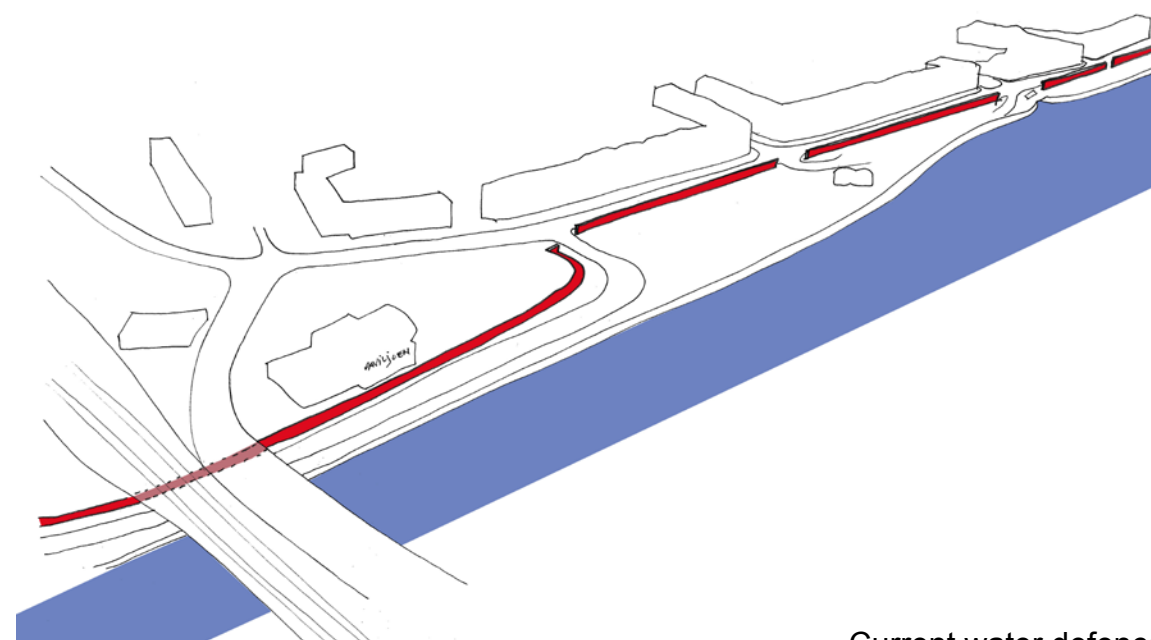
When after a certain period appears these interventions are not enough, it is possible to give more space to the river. This model proposes a part of the city that will be used as extra basin. But more study is necessary to make this an addition to the urban quality.



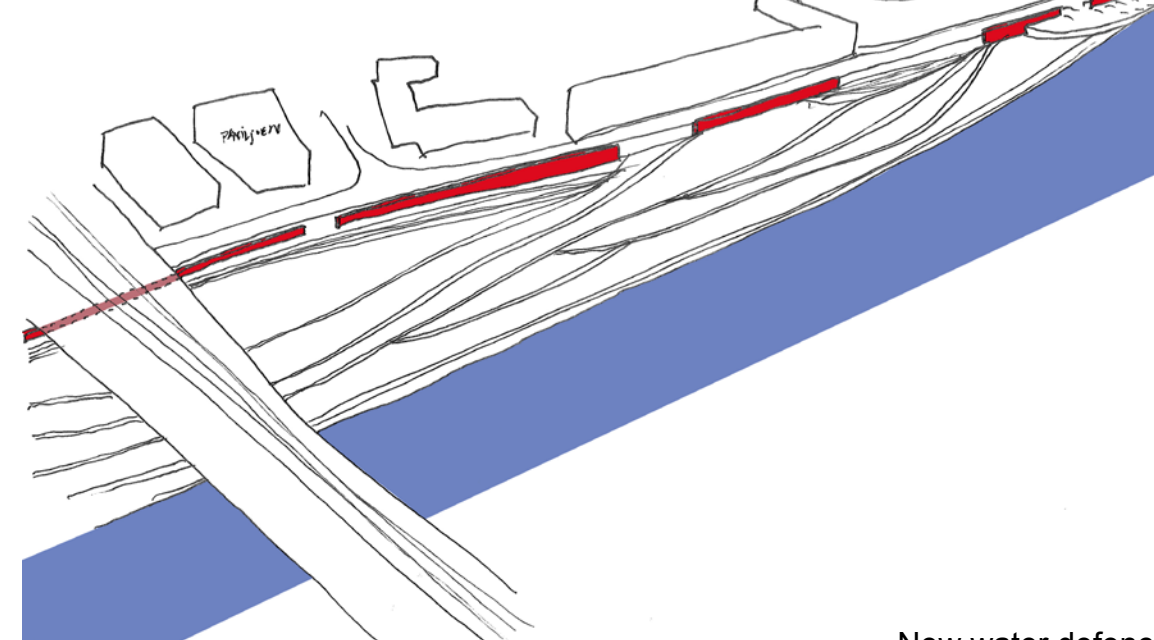
Current waterlevel



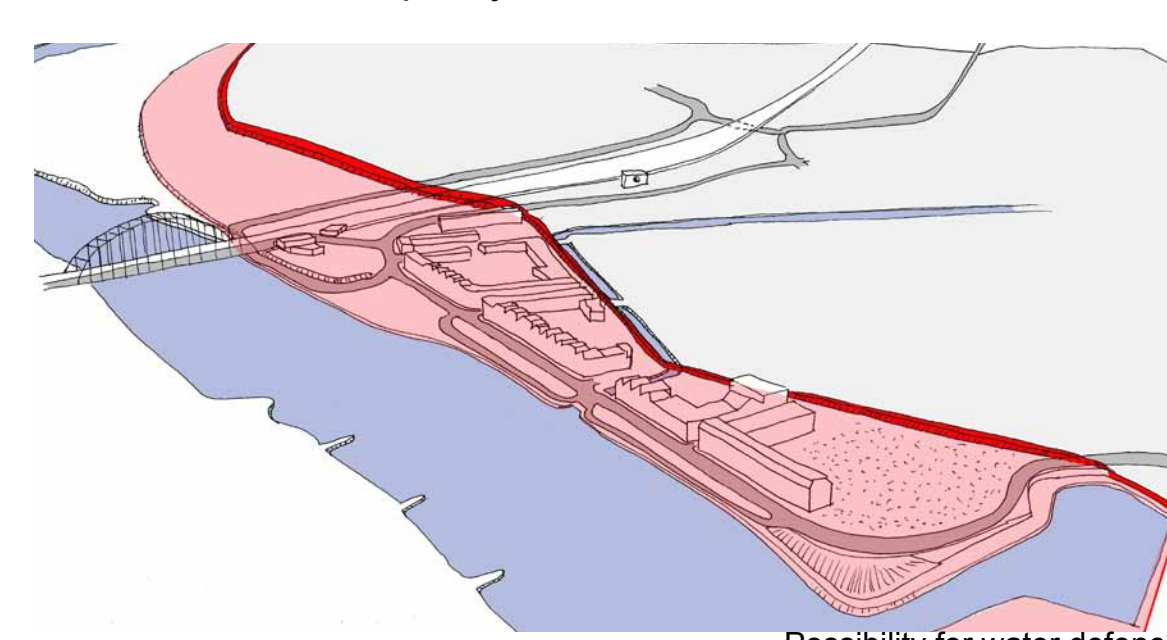
Future waterlevel



Current water defence



New water defence



Possibility for water defence

Design Principles

Different design principles from the case study are integrated in the masterplan. The case study is done in different river cities in the Netherlands. The criteria used during the study are listed below together with the implemented design principles.

Pedestrian access

Reorganize public space
Restructure infrastructure
Create a walking route
Redesign public quay

Activities near the river

Add function as destination
Create space for terraces and/or events
Create possibility for riverbased recreation

Visual link

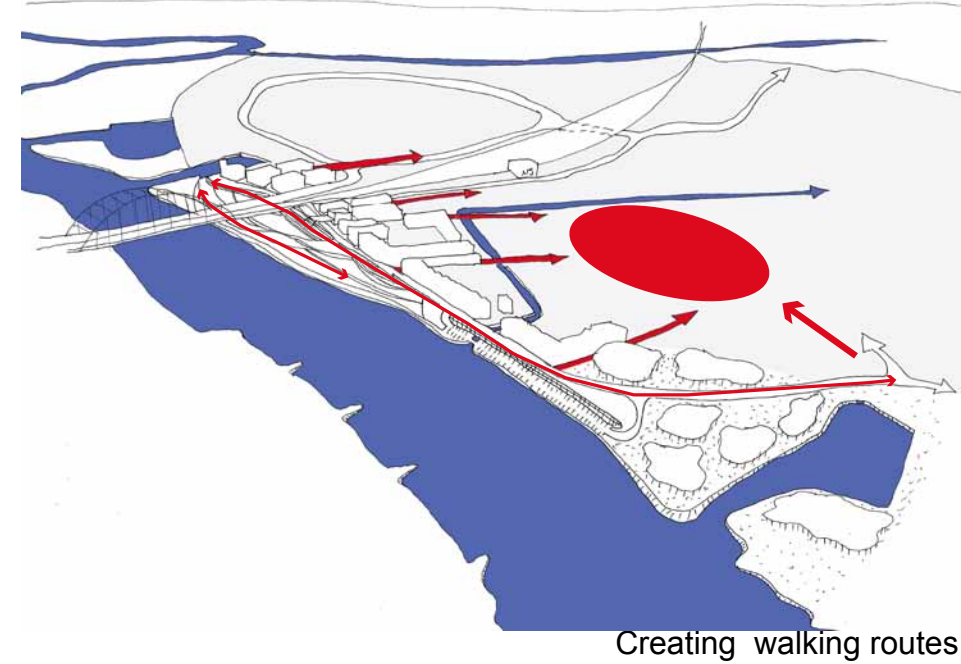
Different height levels quay
Removing obstacles

Connections along riverfront

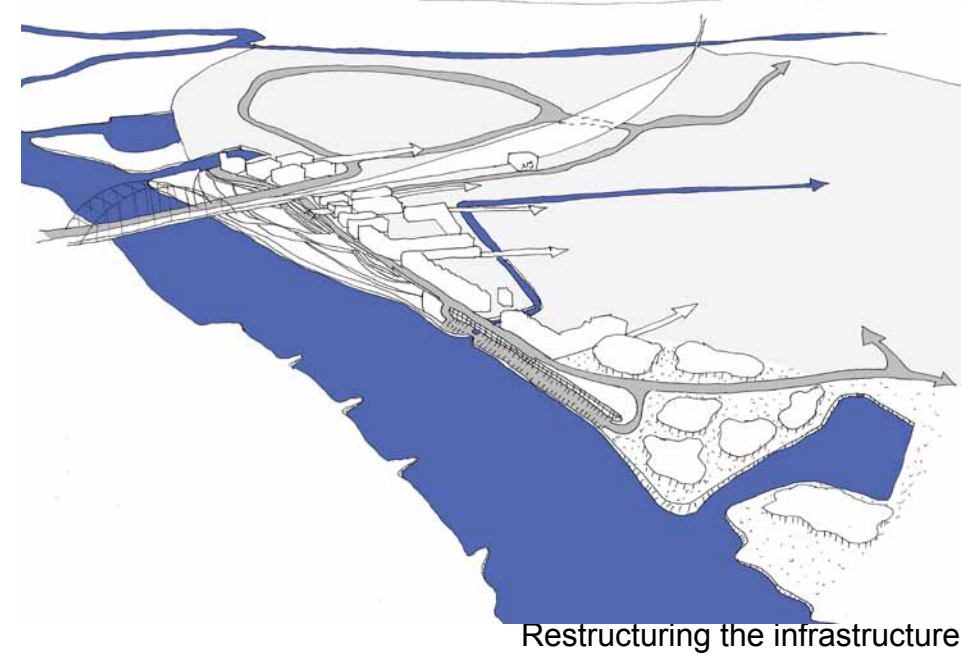
Extend public riverfront



Adding destinations



Creating walking routes



Restructuring the infrastructure

