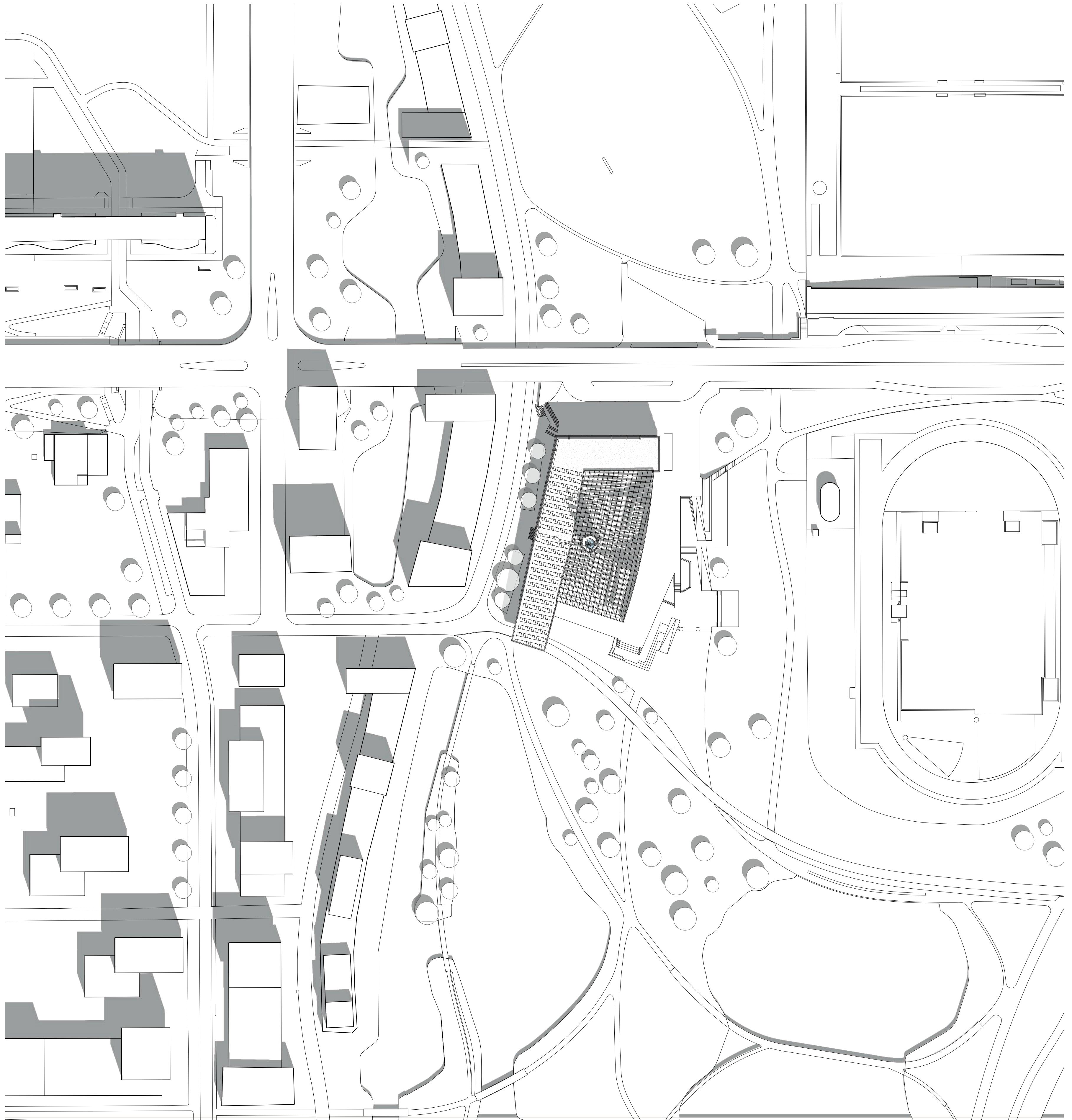


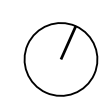
# ENERGY ACADEMY

| POWER TO THE PEOPLE |

TOM HULSMAN



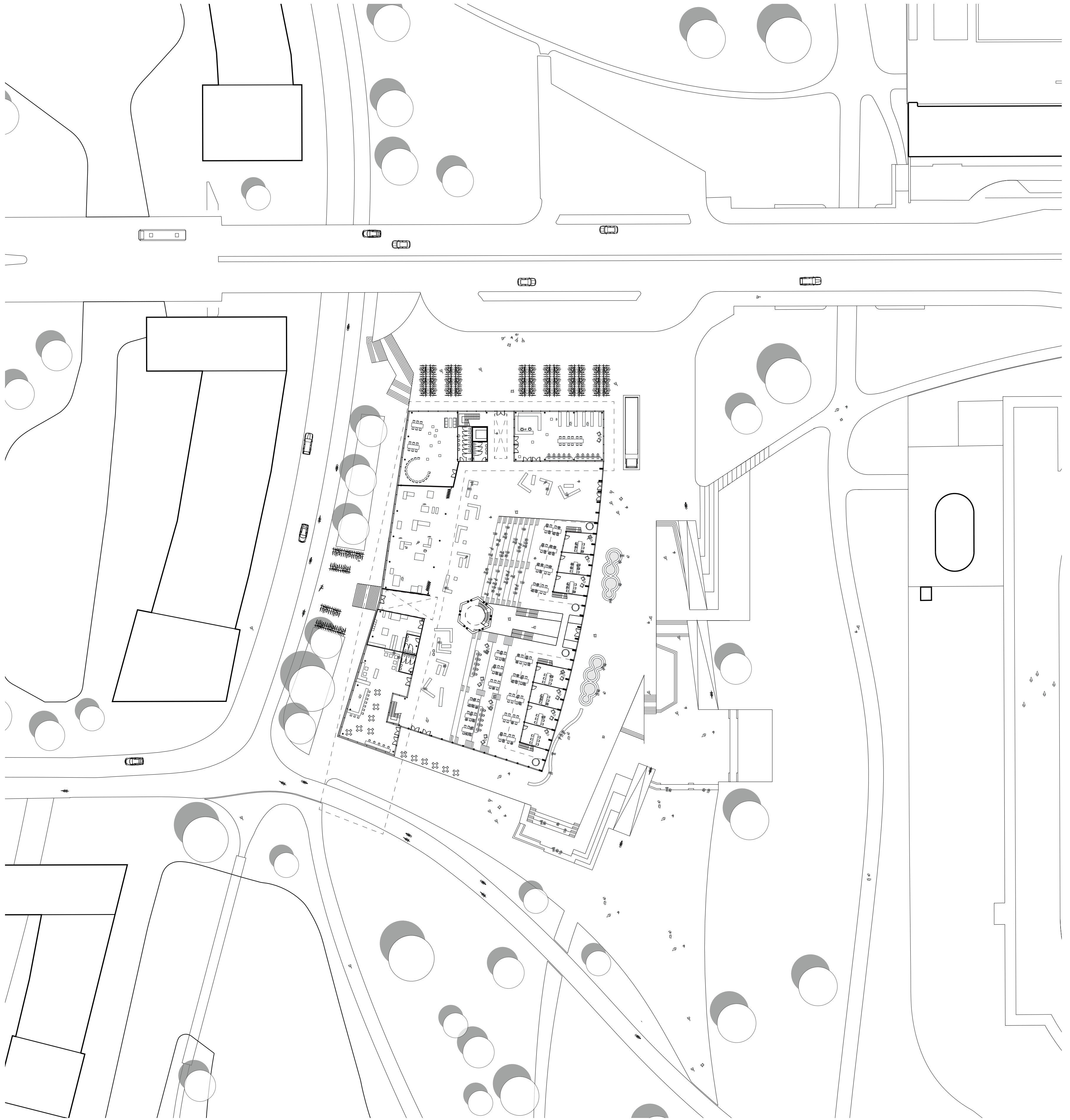
## SURROUNDINGS



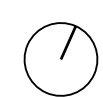
# ENERGY ACADEMY

| POWER TO THE PEOPLE |

TOM HULSMAN



## URBAN IMPLEMENTATION

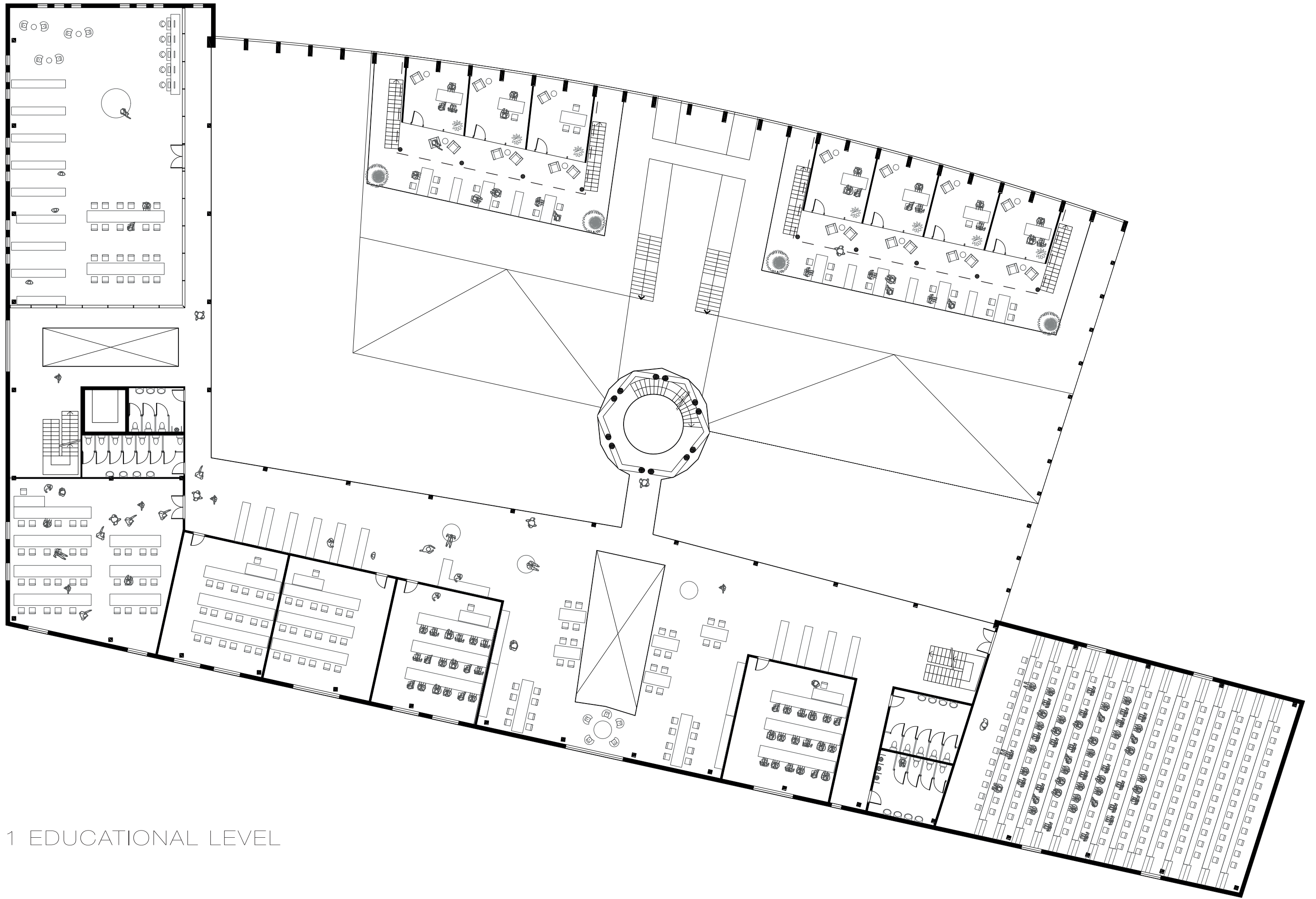




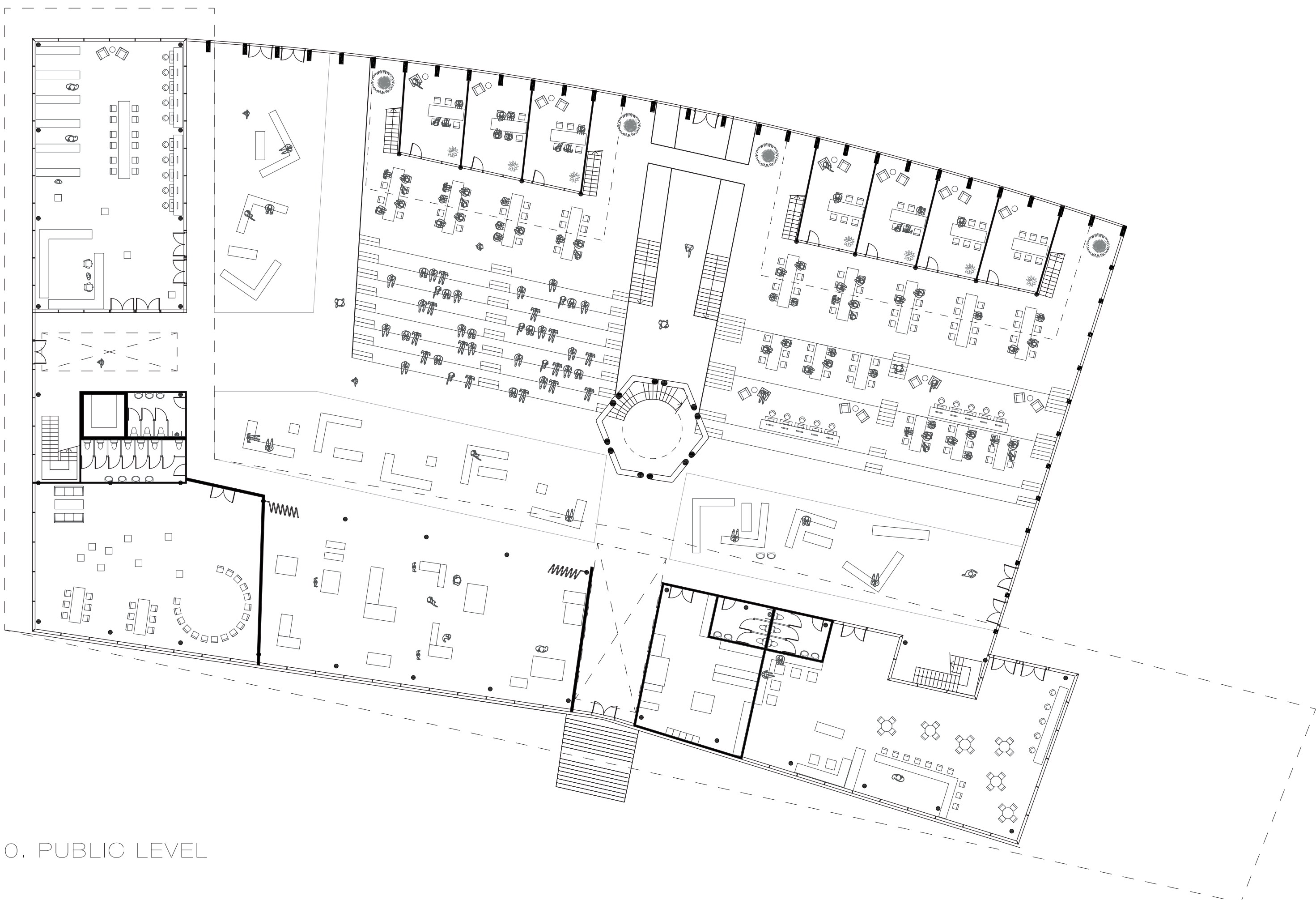
# ENERGY ACADEMY

| POWER TO THE PEOPLE |

TOM HULSMAN



1 EDUCATIONAL LEVEL



0. PUBLIC LEVEL

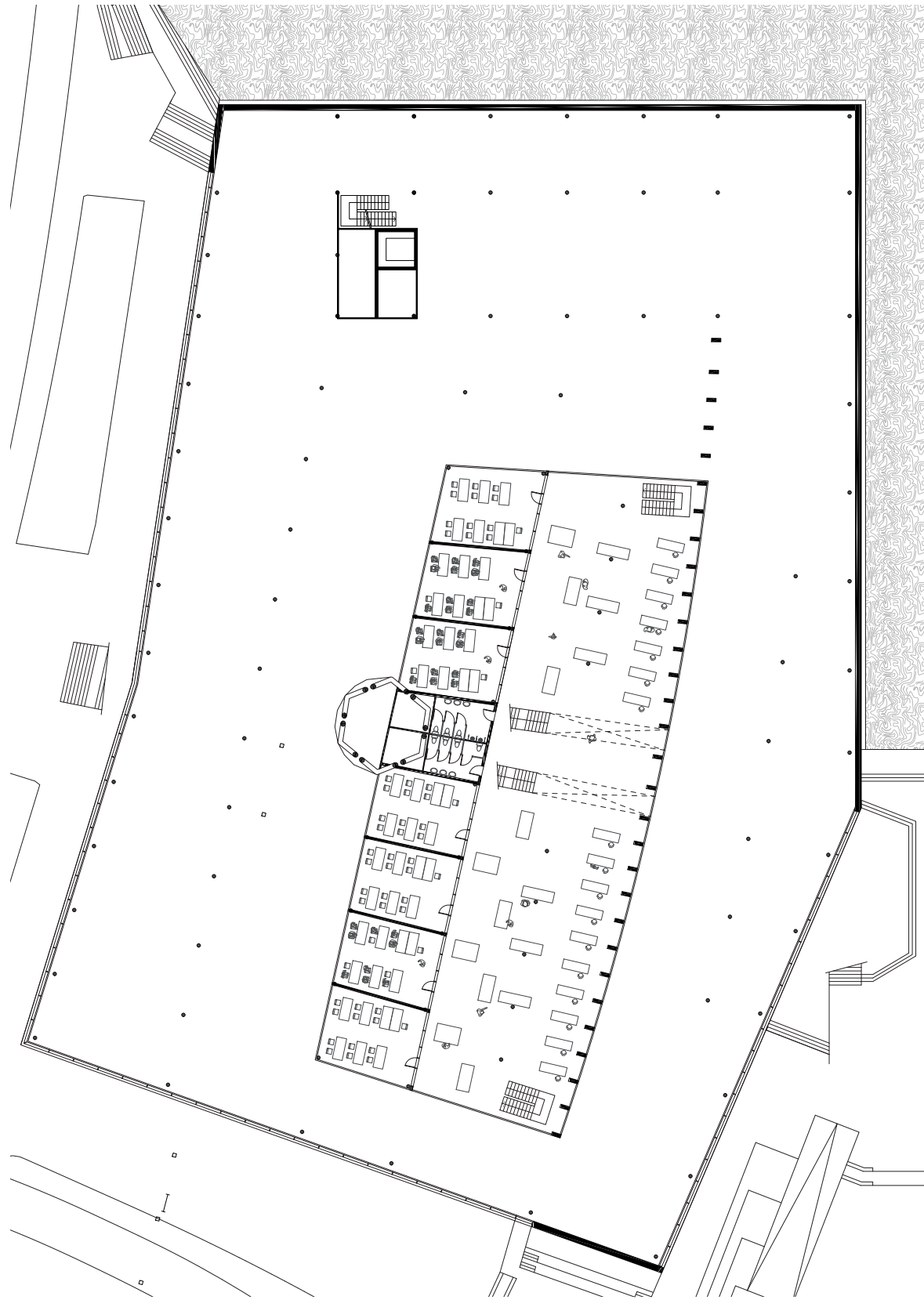




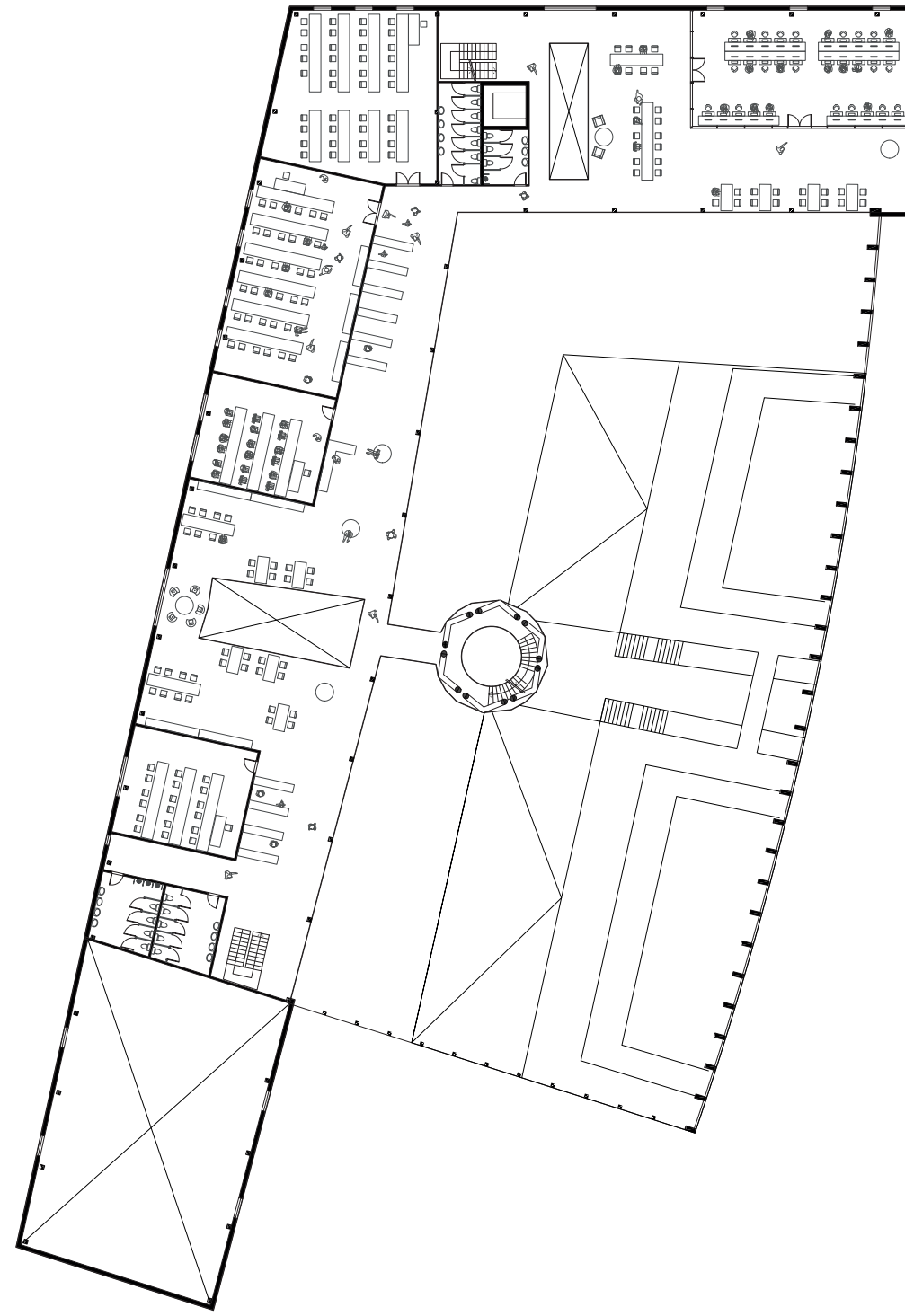
# ENERGY ACADEMY

| POWER TO THE PEOPLE |

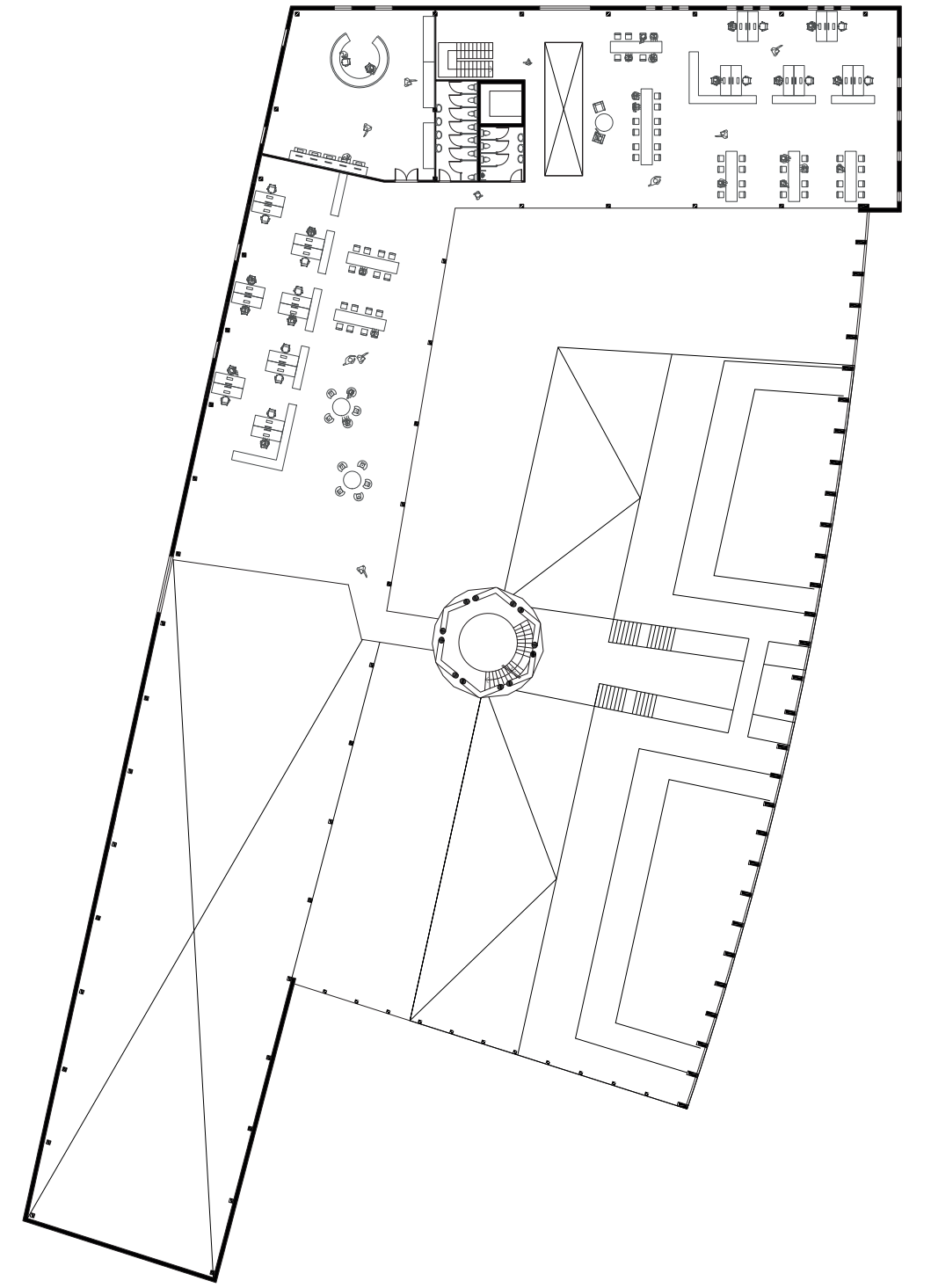
TOM HULSMAN



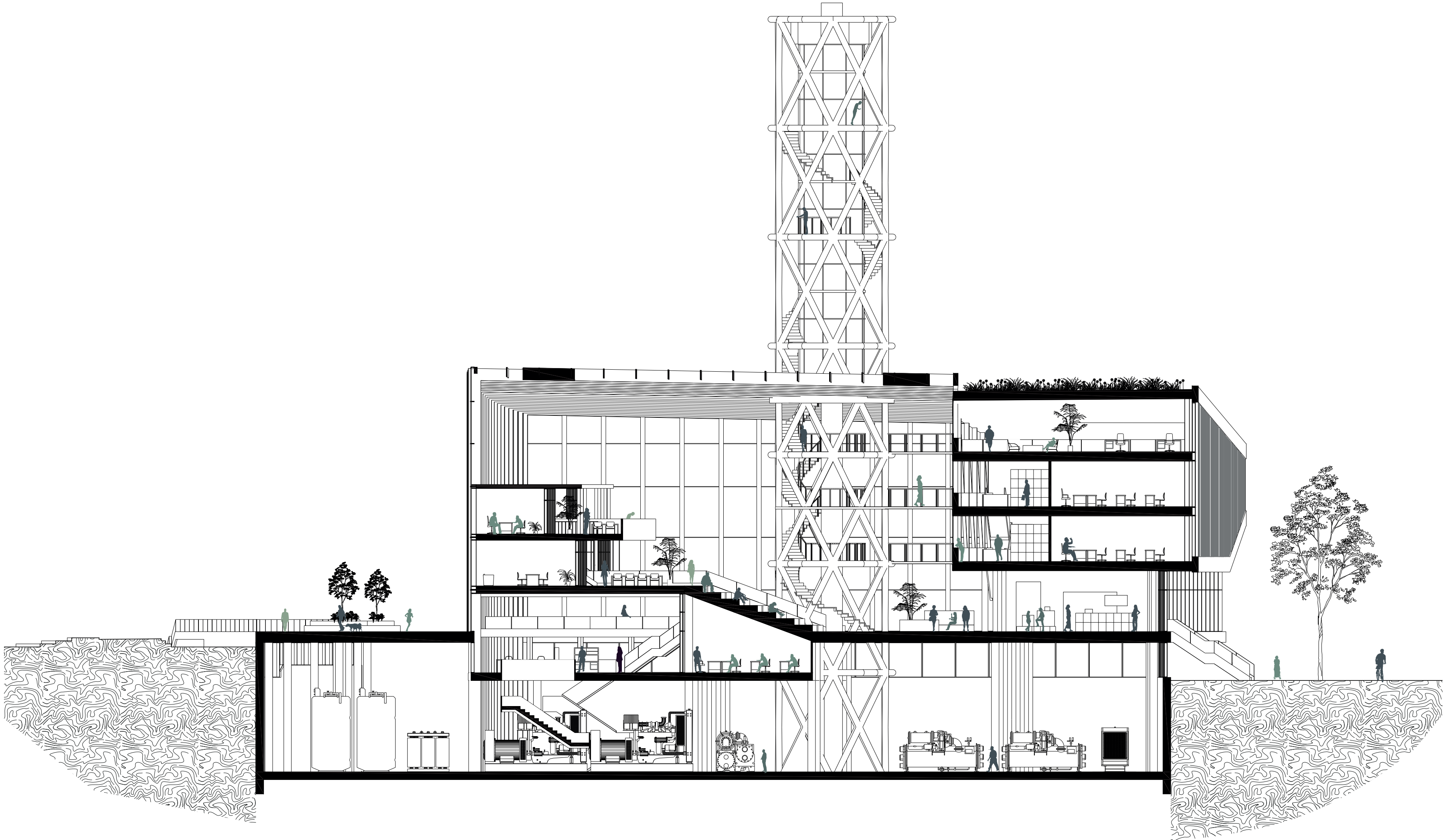
-1 WORKSHOP LEVEL



2 EDUCATIONAL LEVEL



3 OFFICE LEVEL



TRANSVERSAL SECTION





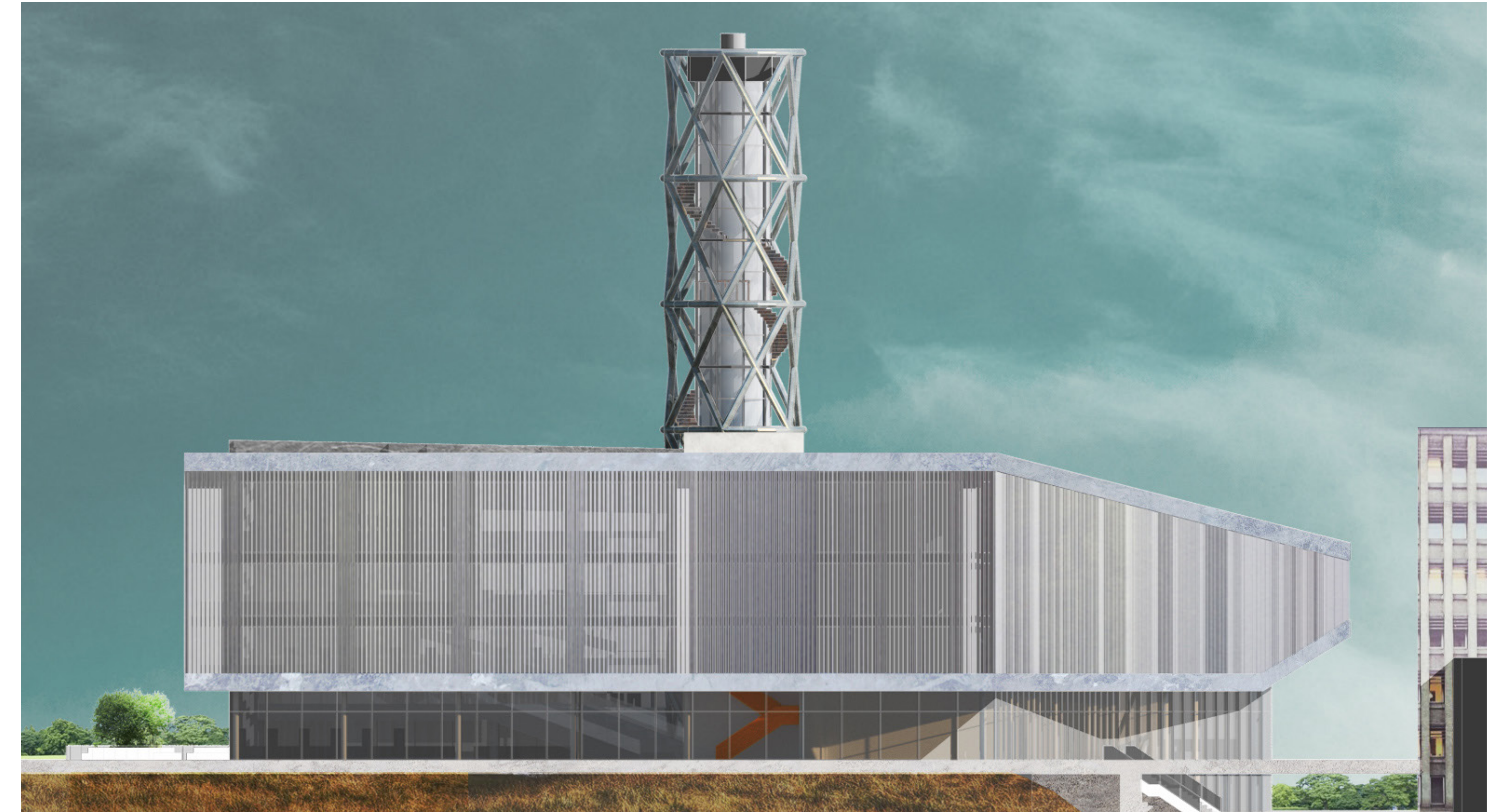
# ENERGY ACADEMY

| POWER TO THE PEOPLE |

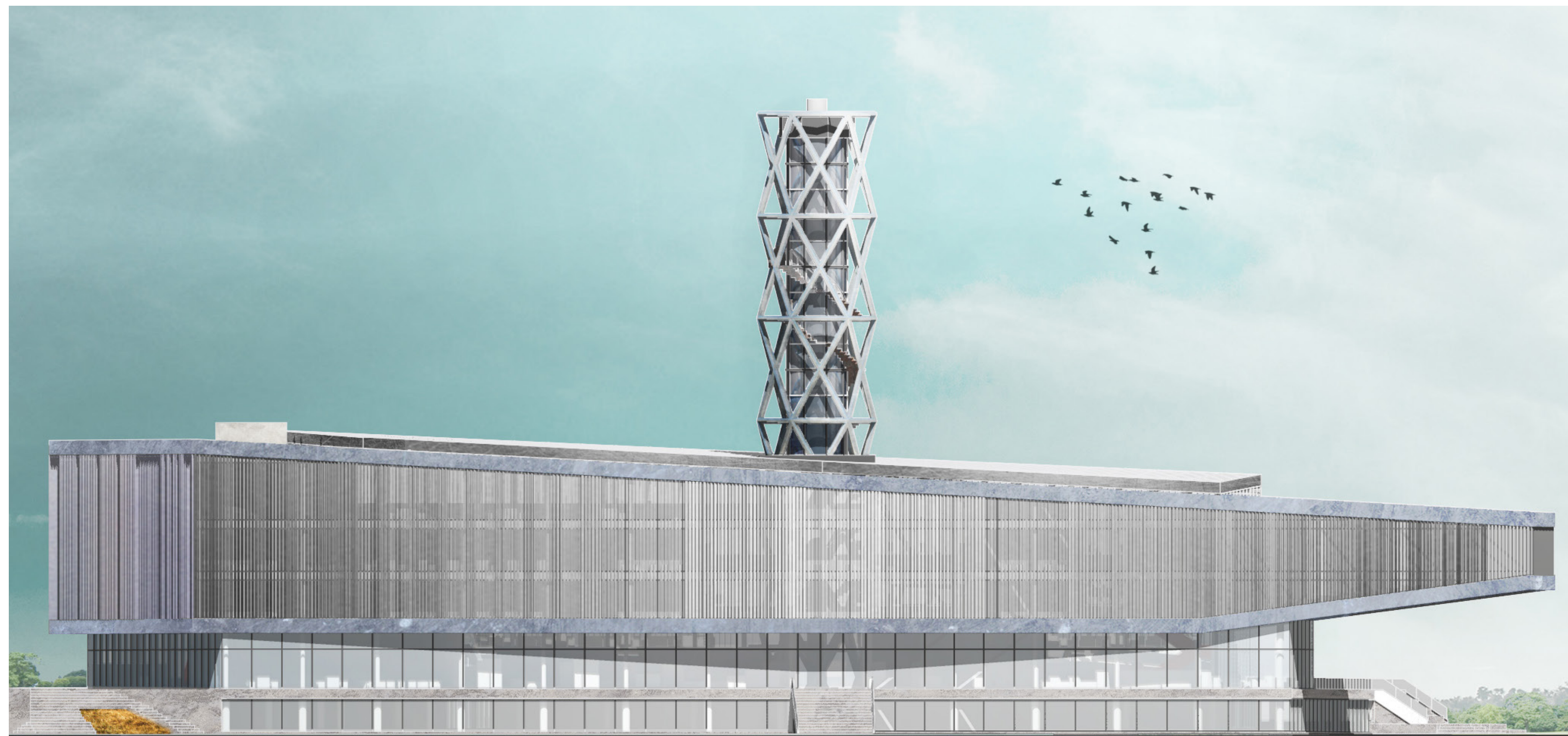
TOM HULSMAN



EAST FACADE



NORTH FACADE



WEST FACADE



SOUTH FACADE

FACADES

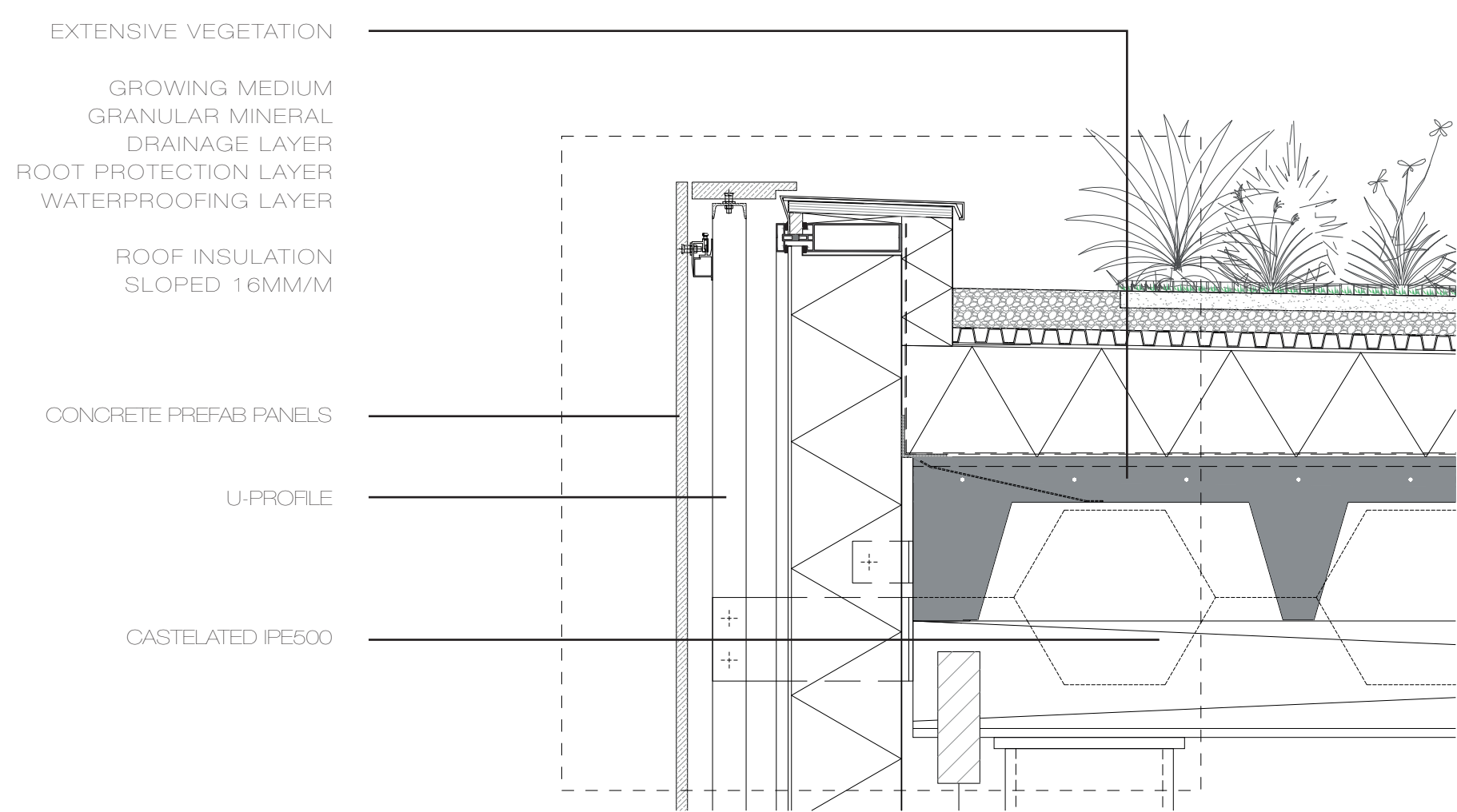




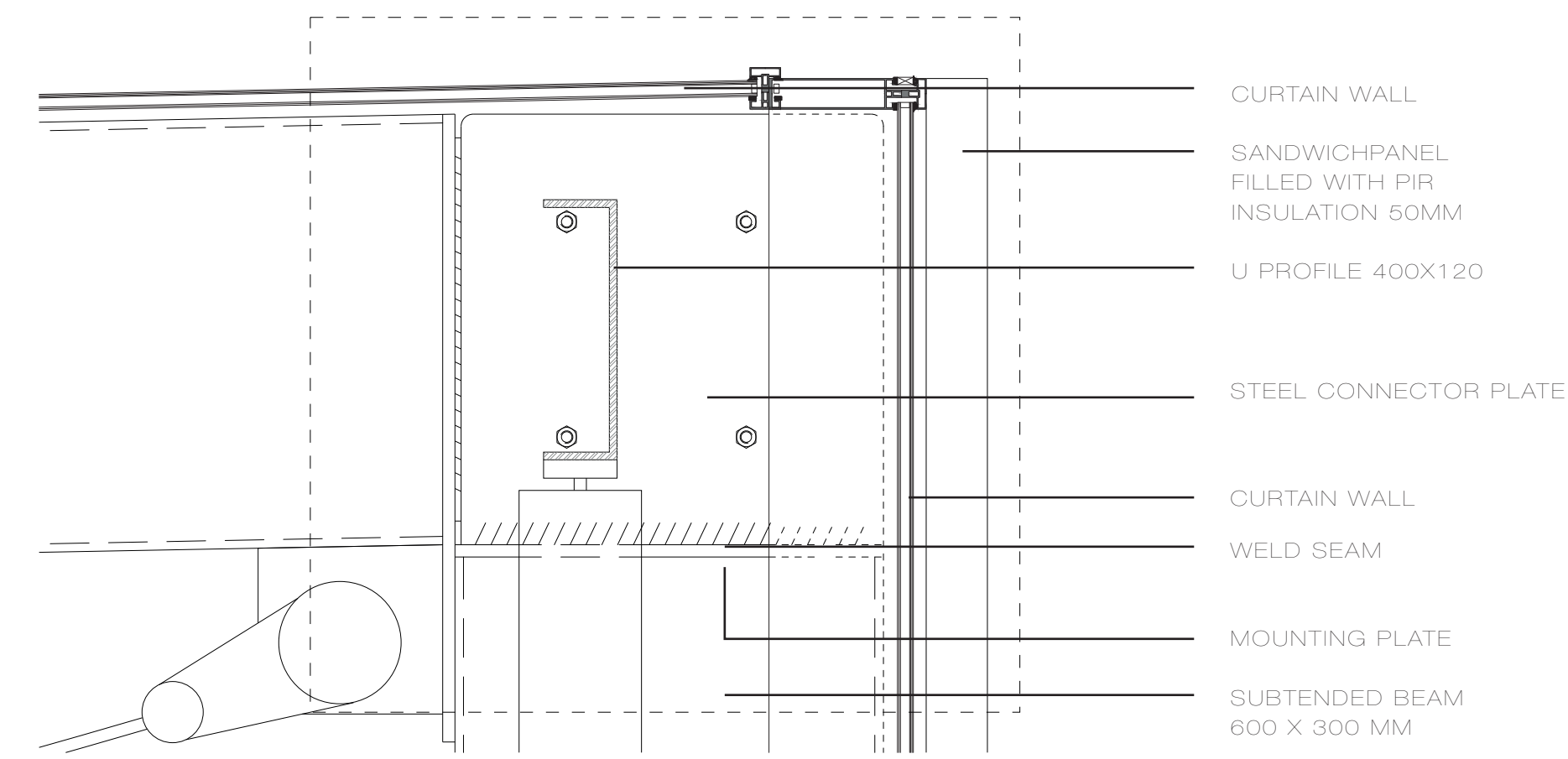
# ENERGY ACADEMY

| POWER TO THE PEOPLE |

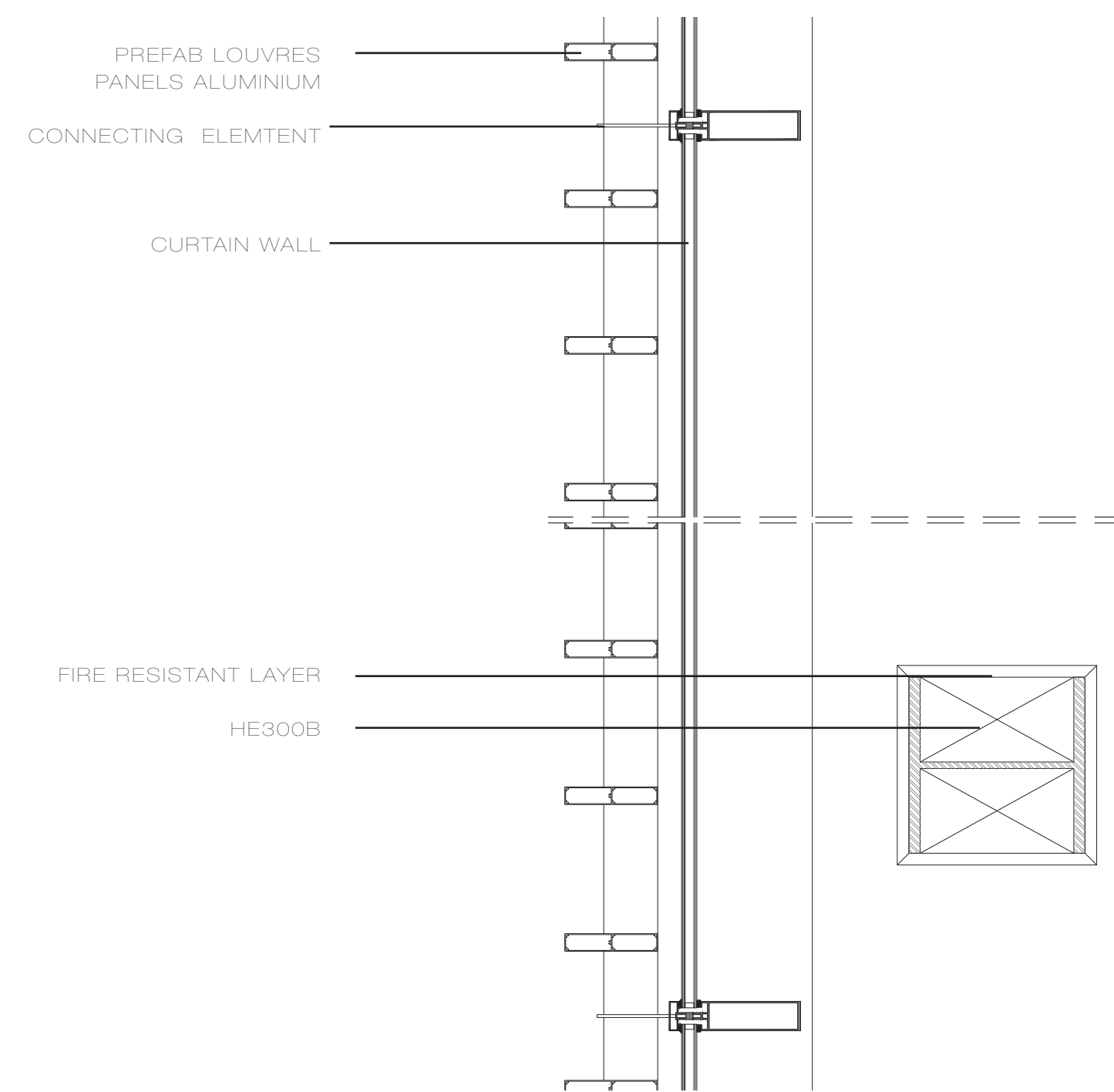
TOM HULSMAN



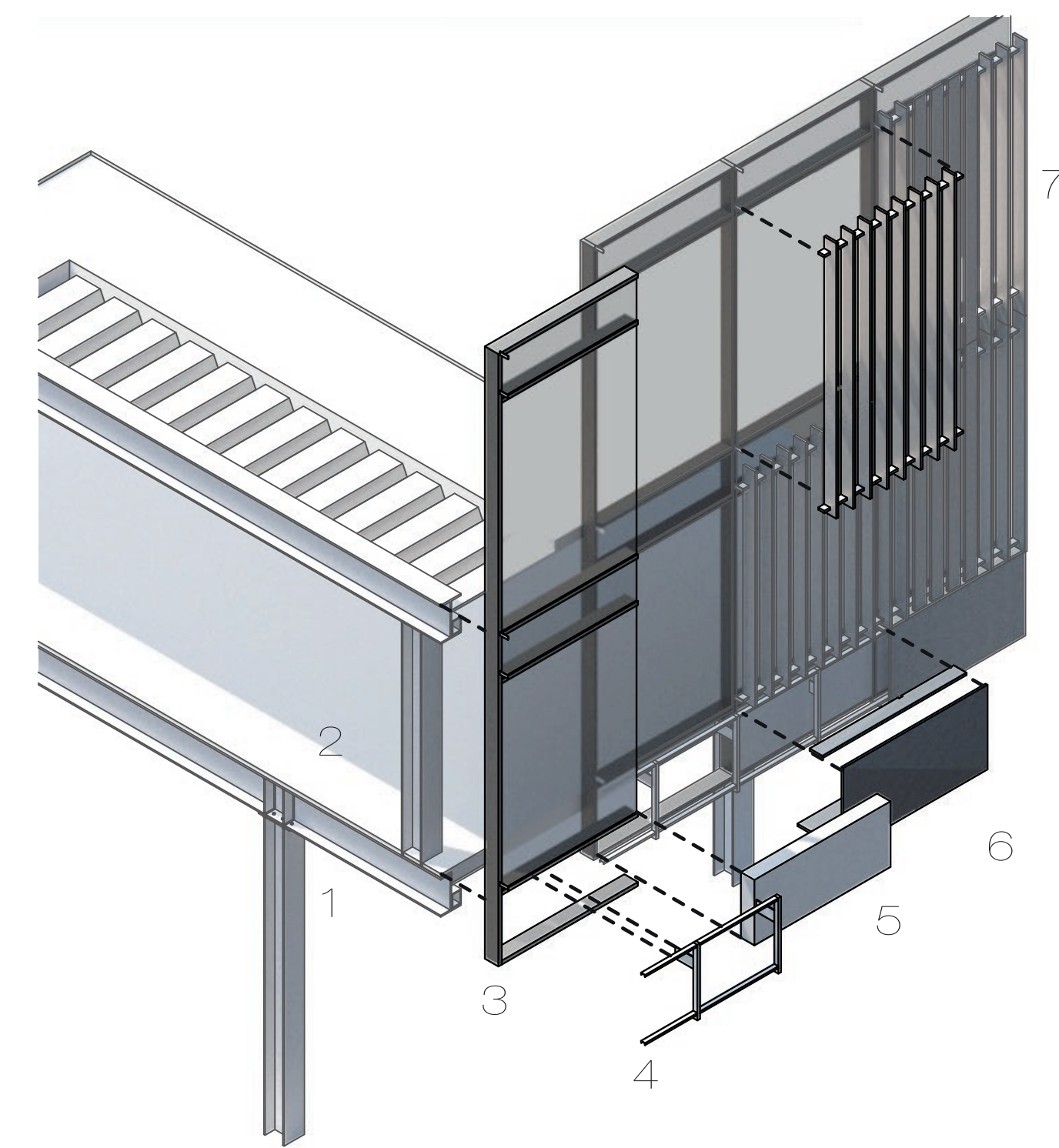
01 ROOF | 1:10



04 ROOF ATRIUM | 1:10

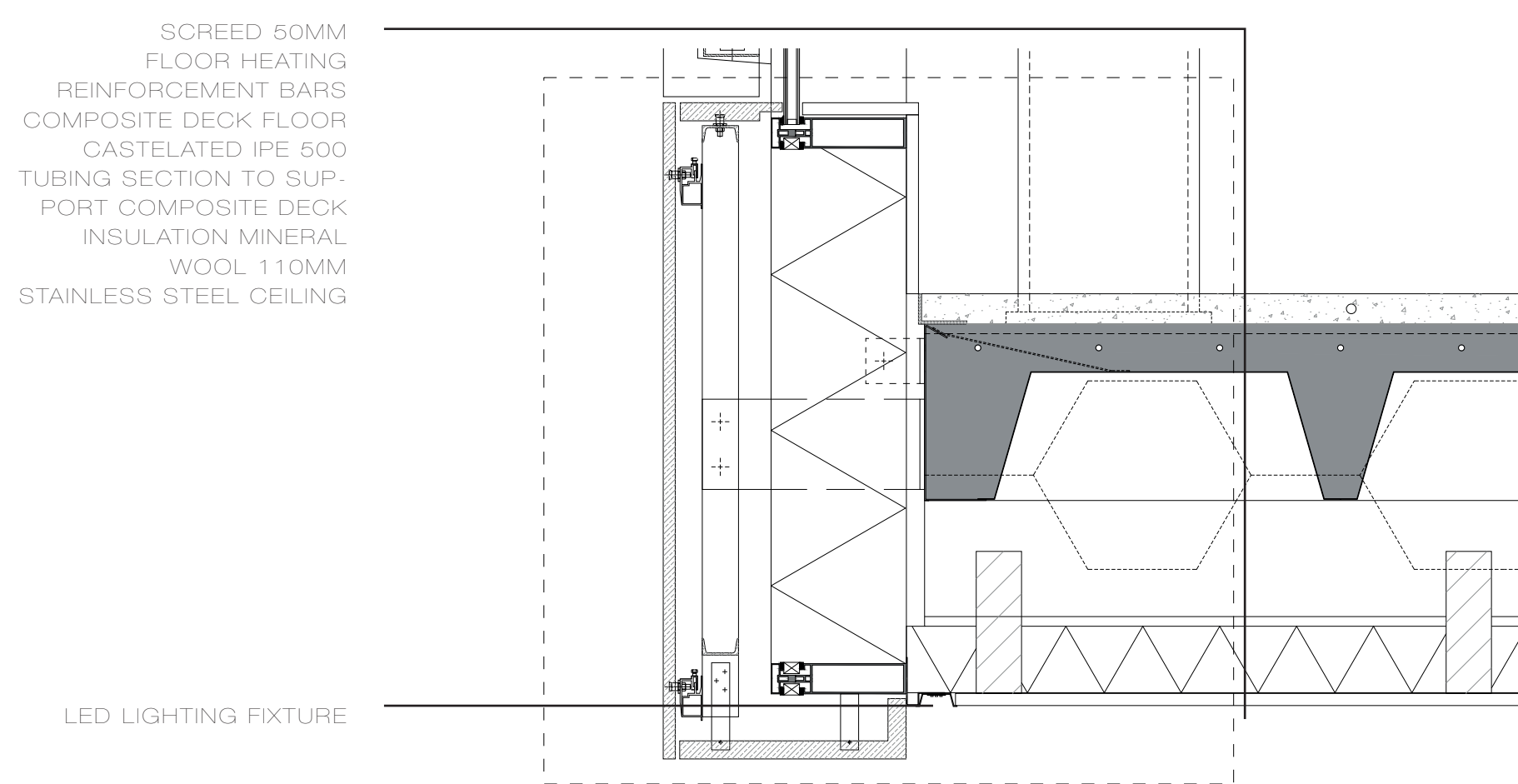


02 CANTILEVER HORIZONTAL | 1:10

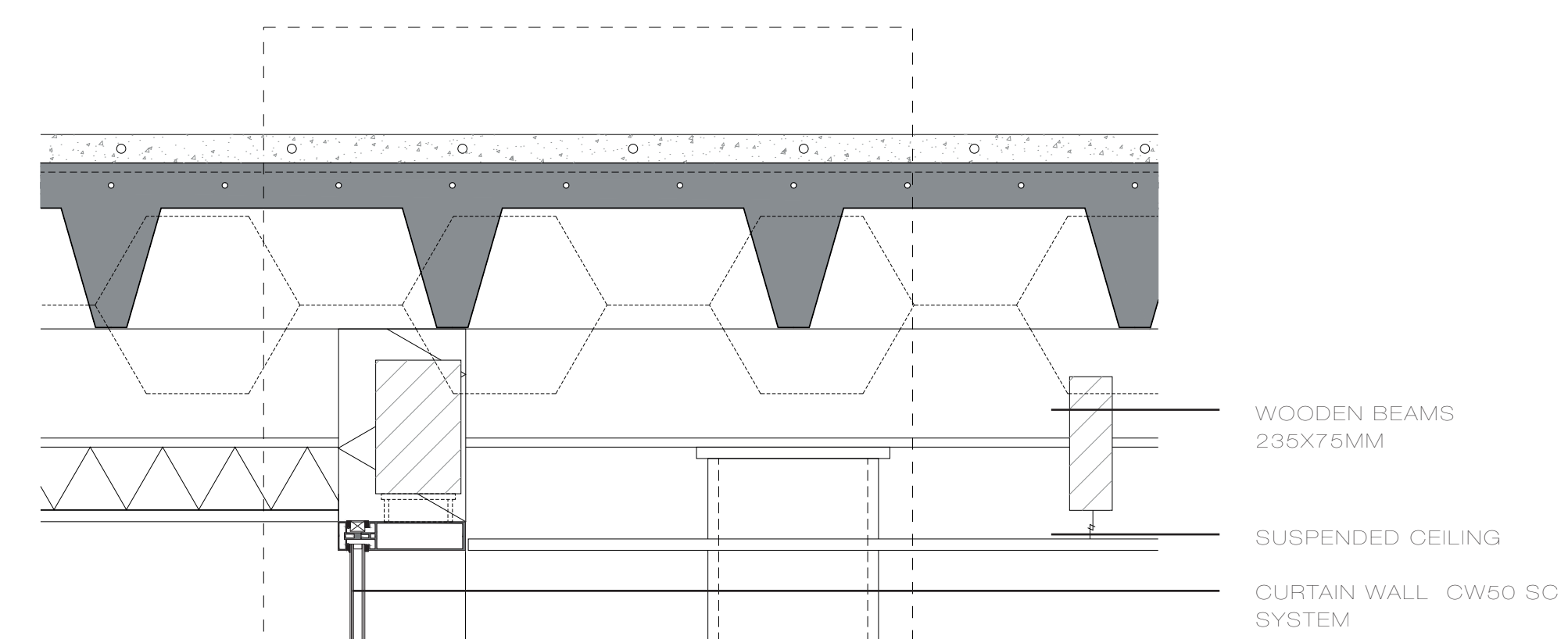


BUILD UP

1. STEEL CONSTRUCTION
2. COMPOSITE DECK
3. WINDOW FRAME
4. FRAME CONCRETE PANELS
5. INSULATION
6. CONCRETE PANELS
7. PREFAB LOUVRE PANEL

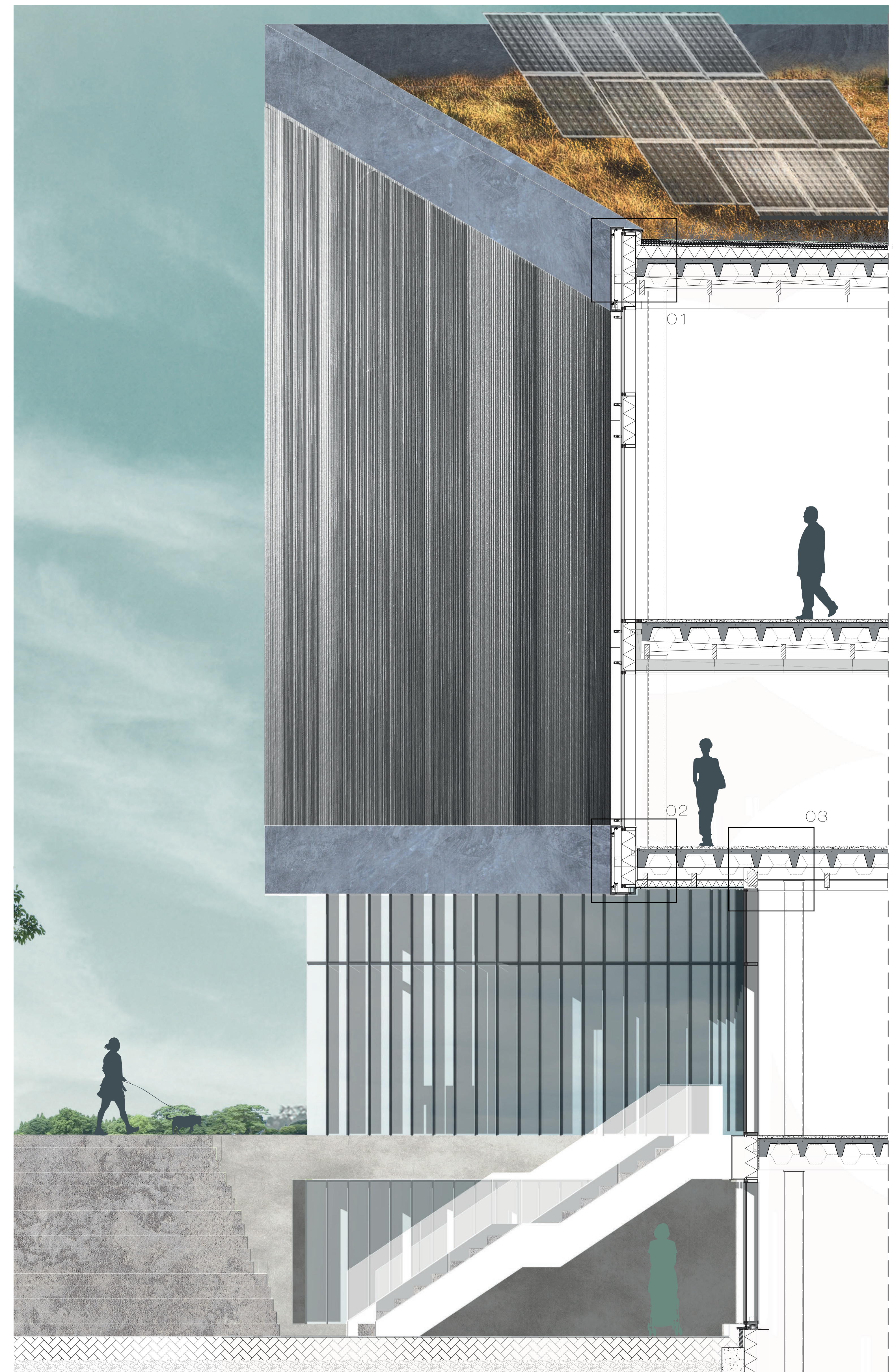


02 CANTILEVER EDGE | 1:10



03 CANTILEVER CONNECTION | 1:10

DETAILING

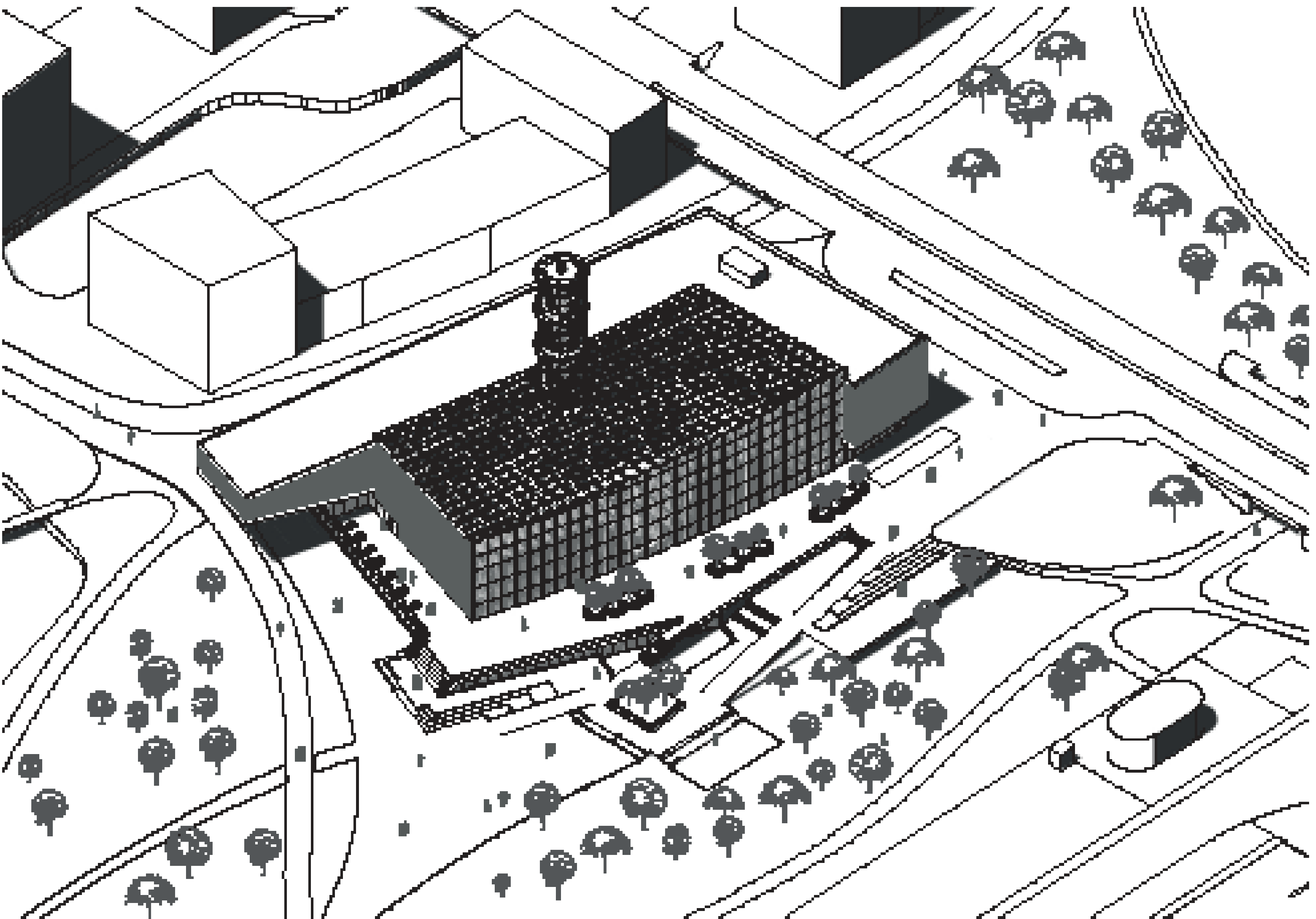




# ENERGY ACADEMY

| POWER TO THE PEOPLE |

TOM HULSMAN



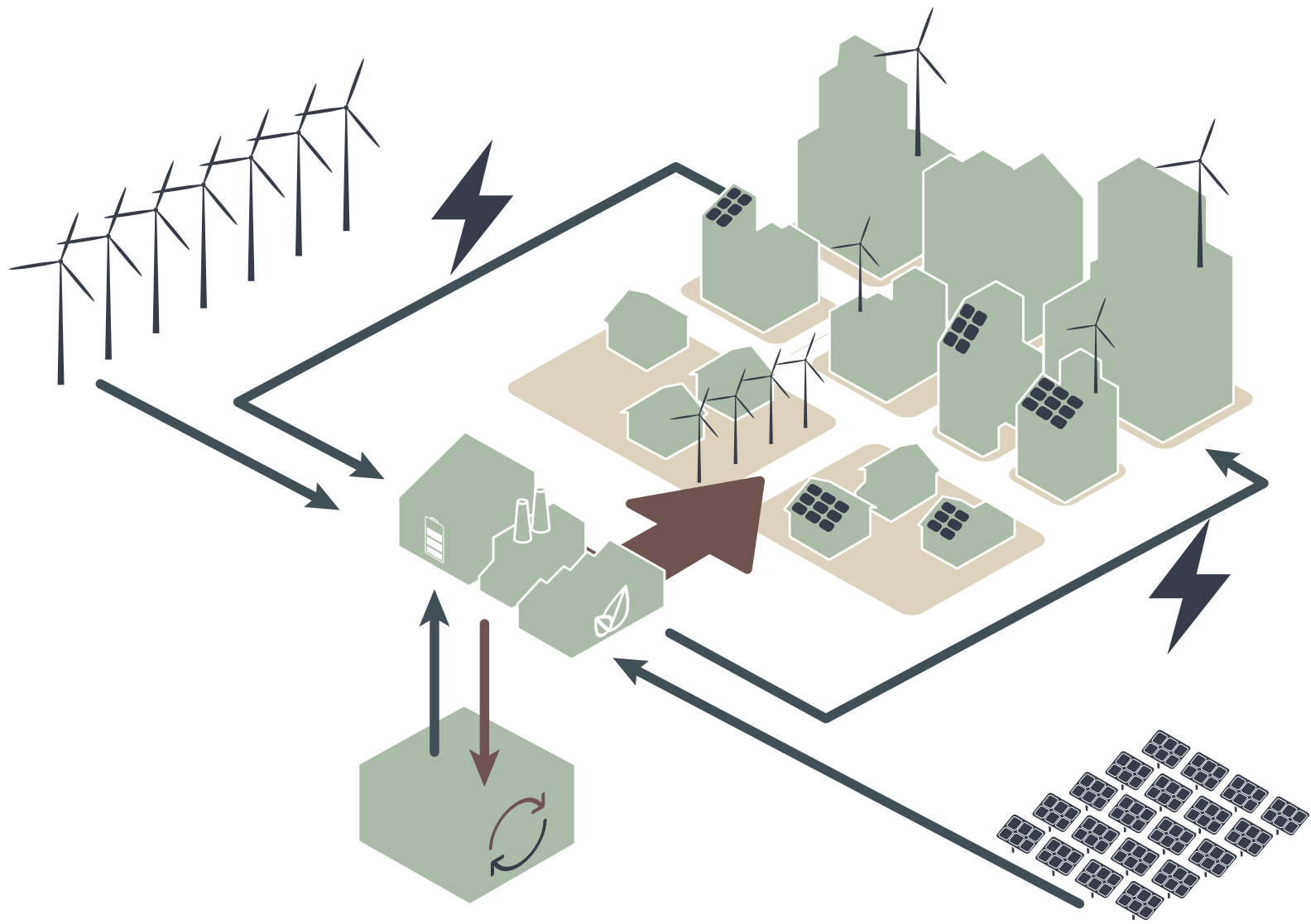
AXONOMETRIC



# ENERGY ACADEMY

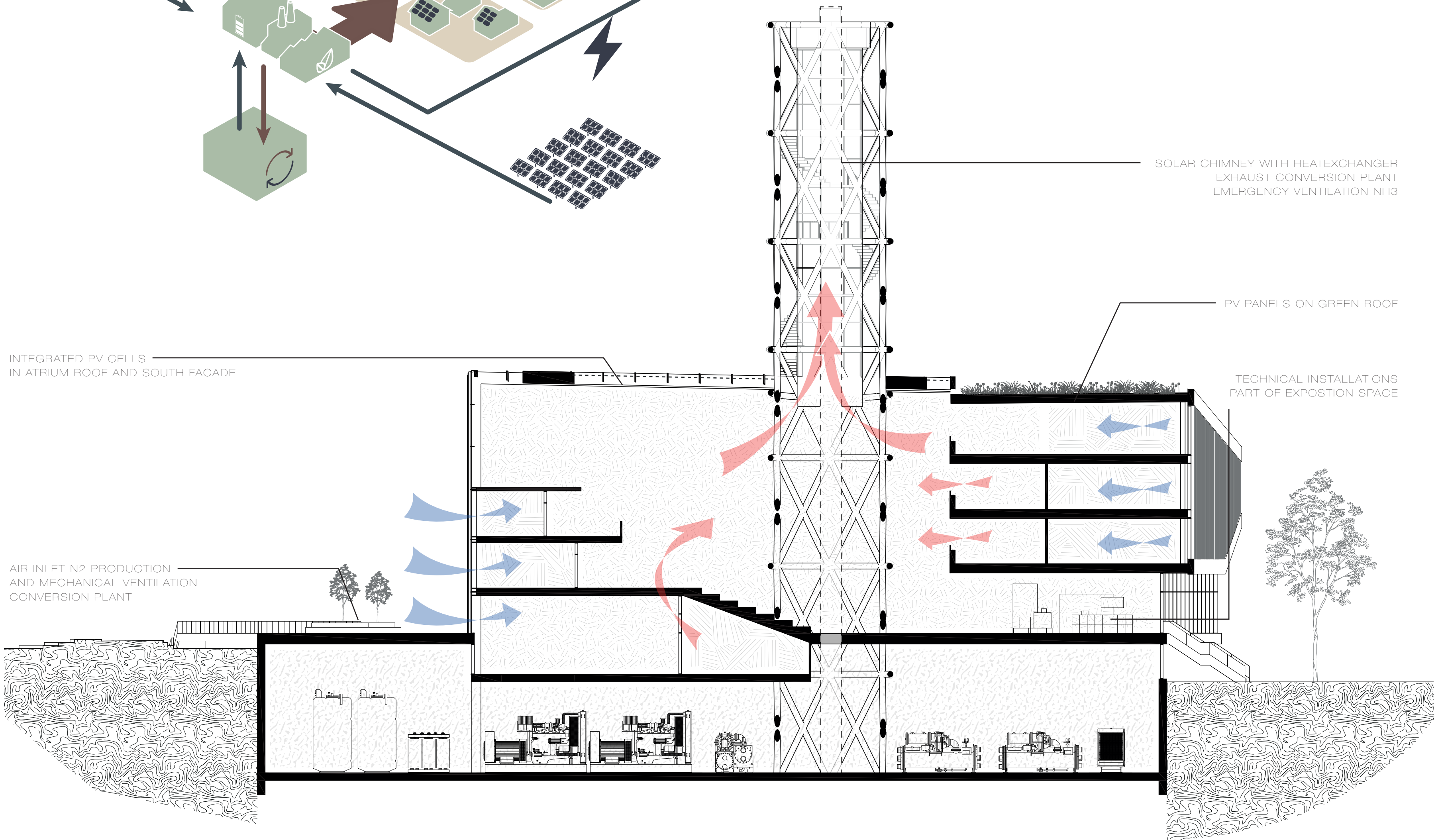
| POWER TO THE PEOPLE |

TOM HULSMAN

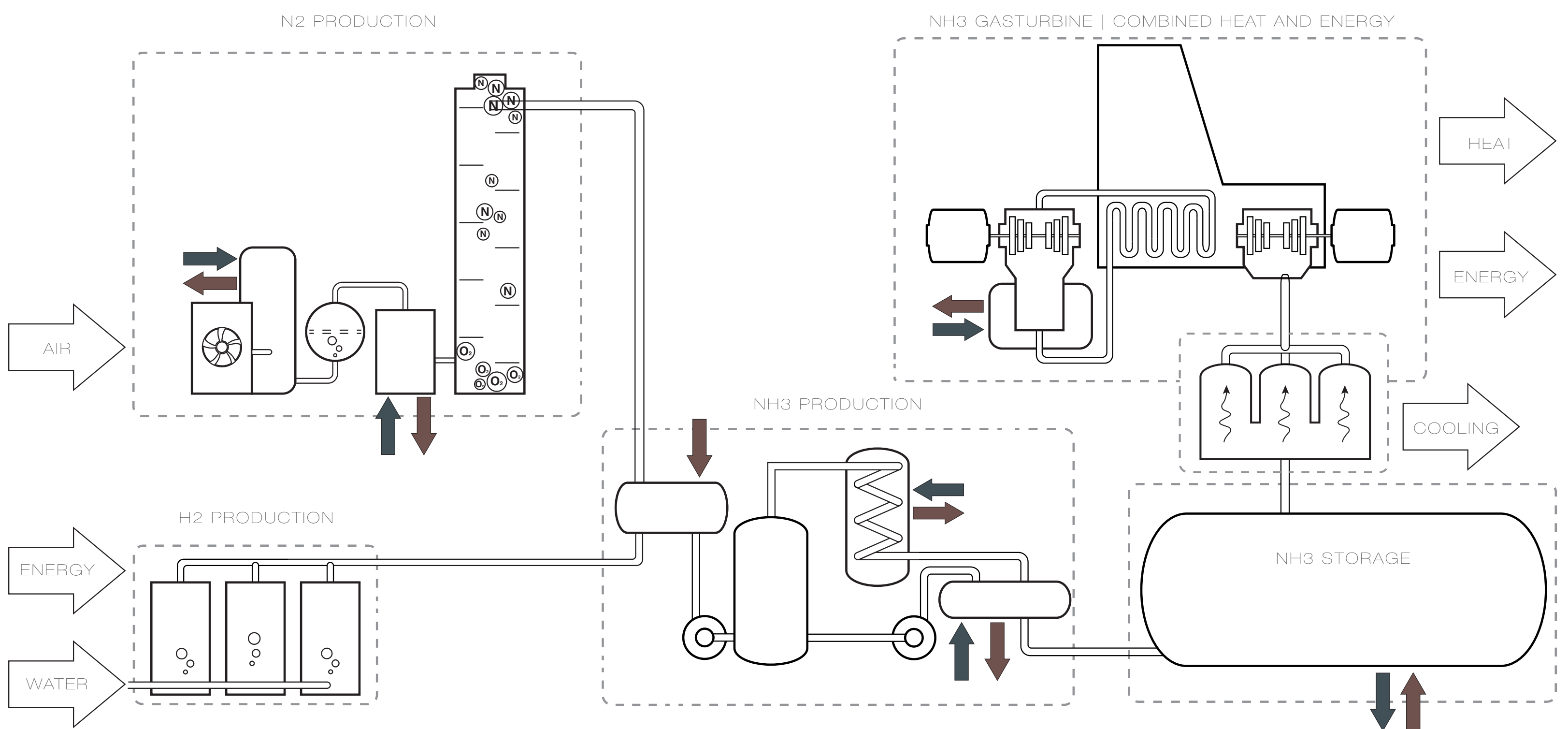


## ENERGY PRINCIPLE

The conversion plant works as a distribution centre for energy. It can store energy for long periods of time as NH<sub>3</sub> and for shorter amounts of time in its H<sub>2</sub> producing batteries (battolysers). With the transition from energy to NH<sub>3</sub> and back a lot of excess heat is produced, which is used both for the rest of the building as heating and for district heating. The necessary cooling load is achieved through evaporation of ammonia, which is necessary for the energy process.



## CLIMATIC PRINCIPLES

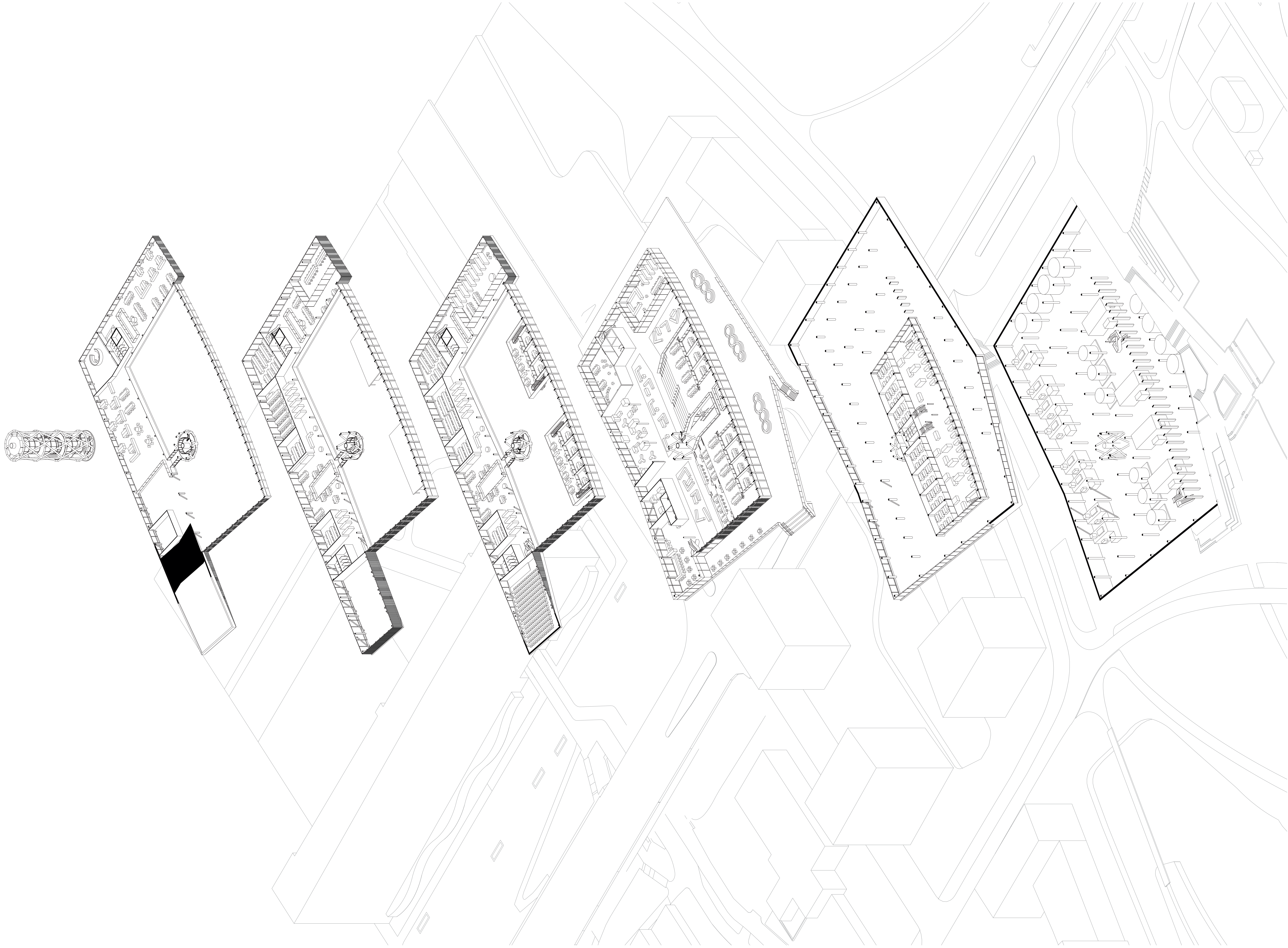


## ENERGY CONVERSION PROCES



**ENERGY ACADEMY**  
| POWER TO THE PEOPLE |

TOM HULSMAN





ENERGY ACADEMY

| POWER TO THE PEOPLE |

TOM HULSMAN

