



Delft University of Technology

Local smoothing edge preserving filters

Al-sawaf, Firas; Groves, Roger

Publication date
2017

Document Version
Final published version

Citation (APA)
Al-sawaf, F., & Groves, R. (2017). *Local smoothing edge preserving filters*. Abstract from Face2Phase conference, Delft, Netherlands.

Important note
To cite this publication, please use the final published version (if applicable).
Please check the document version above.

Copyright
Other than for strictly personal use, it is not permitted to download, forward or distribute the text or part of it, without the consent of the author(s) and/or copyright holder(s), unless the work is under an open content license such as Creative Commons.

Takedown policy
Please contact us and provide details if you believe this document breaches copyrights.
We will remove access to the work immediately and investigate your claim.

*This work is downloaded from Delft University of Technology.
For technical reasons the number of authors shown on this cover page is limited to a maximum of 10.*

Local smoothing edge preserving filters

F. Sawaf,¹ R.M. Groves¹

¹ TU Delft, Aerospace Non-Destructive Testing Laboratory, Delft, The Netherlands

email: f.sawaf@tudelft.nl

Abstract: Mathematical research breakthroughs, in the domain of image processing filters, were recently accomplished by combining non-local means smoothing operations with polynomial regression techniques. We show how inherently noisy speckle interferograms can benefit from these methods, which have been shown to achieve near-optimal noise removal, while maximally preserving edge information corresponding to phase jump locations in optically captured phase fields.

INTRODUCTION

Images produced by an interferometric speckle capture system are inherently noisy, and the phase information is naturally wrapped onto the range $-\pi$ to $+\pi$. The reconstruction of the unknown multiples of 2π necessitates reliable identification of phase jumps. In this work, we apply recent advances in mathematically researched approaches [1] to image filtering, which focus particularly on edge location preservation in the context of excessively noisy images.

EXPERIMENTAL METHODS

We experimented with a range of non-local means based methods reviewed in [1], and compared their performance against a variety of input images. We report here on two methods [1, 2] in particular, which gave promising results when applied to speckle images.

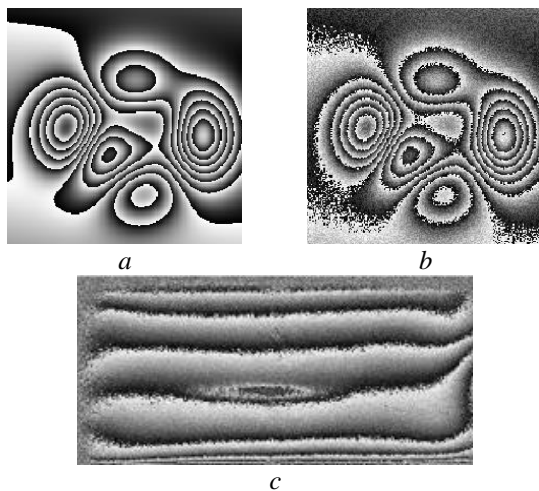


Fig. 1: Input interferograms employed for performance testing. Noise-free simulated (a), simulated noisy (b), and optically captured interferograms.

Method [2] makes use of a Yaroslavsky filter. Method [3] employs polynomial regression in conjunction with non-local means smoothing [1]. To demonstrate filtering performance, we use two input images shown in Fig. 1.b and Fig. 1.c, which represent simulated and optically captured speckle interferograms, respectively.

RESULTS AND DISCUSSION

We note that method [3] gives better performance overall against both simulated and optically captured images, Fig 2. Method [2] does have interesting features, nevertheless, such as allowing for an external “oracle” to identify edge locations. It also appears to preserve local features better such as the elliptical fringe near the centre of Fig 2.c.

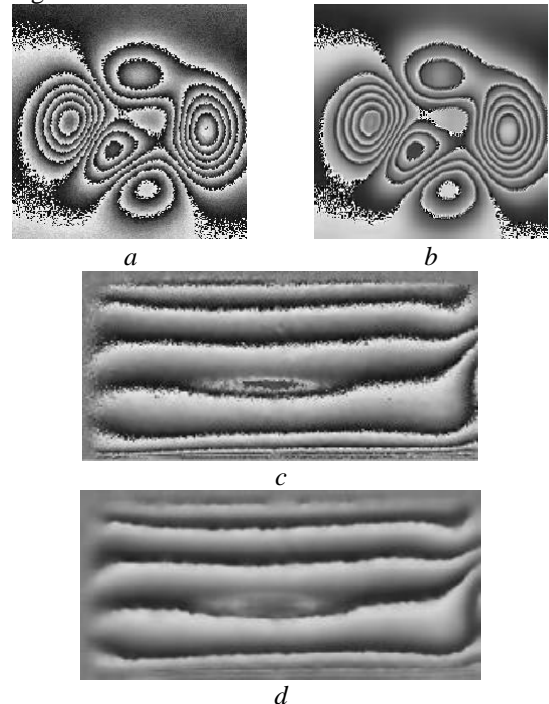


Fig. 2: (a) and (b) are results of applying [2], [3] to Fig 1.b, and (c), (d) are results of applying [2], [3] to Fig 1.c, respectively.

CONCLUSION

We explored a range of recently developed image processing method, which employ statistical techniques to achieve improved noise removal, while preserving edge location information. We reported on the results obtained against two methods showing promisingly good performance. It would be worth exploring [2] further by constructing a hybrid filtering mechanism, taking advantage of recently developed machine-learning pattern recognition based techniques [4] to act as the phase discontinuity location identification oracle.

REFERENCES

- [1] Morel J-M. *et al.*, Handbook of Mathematical Methods in Imaging, 26:1599-1643, Springer, 2015
- [2] J. Salmon *et al.*, IEEE SSP, pp. 464-467, 2012
- [3] Castro E.A. *et al.*, J. Imaging Sci., 5:944-992, 2012
- [4] Sawaf *et al.*, Appl Opt, 53(24):5439-5447, 2014