

# ROTTERDAM URBAN SCHOOL

Ivo de Bruin  
Complex Projects HNY  
MSc 4 Graduation Studio

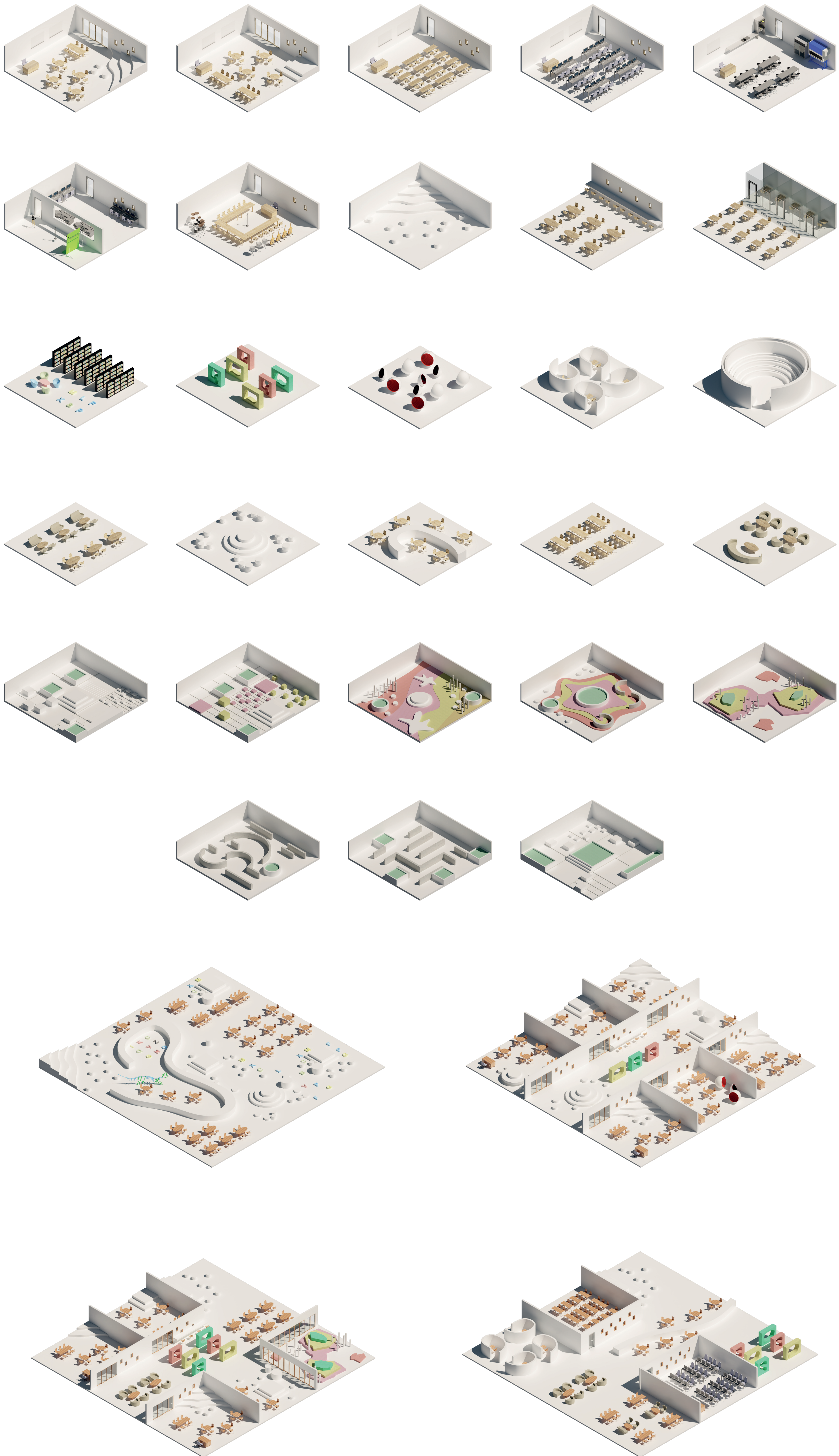


**ROTTERDAM URBAN SCHOOL**  
THE EXPLORATION OF NEW EDUCATIONAL TYPOLOGIES IN THE DUTCH SETTING  
IVO DE BRUIN





**ROTTERDAM URBAN SCHOOL**  
THE EXPLORATION OF NEW EDUCATIONAL TYPOLOGIES IN THE DUTCH SETTING  
IVO DE BRUIN





**ROTTERDAM URBAN SCHOOL**  
THE EXPLORATION OF NEW EDUCATIONAL TYPOLOGIES IN THE DUTCH SETTING  
IVO DE BRUIN

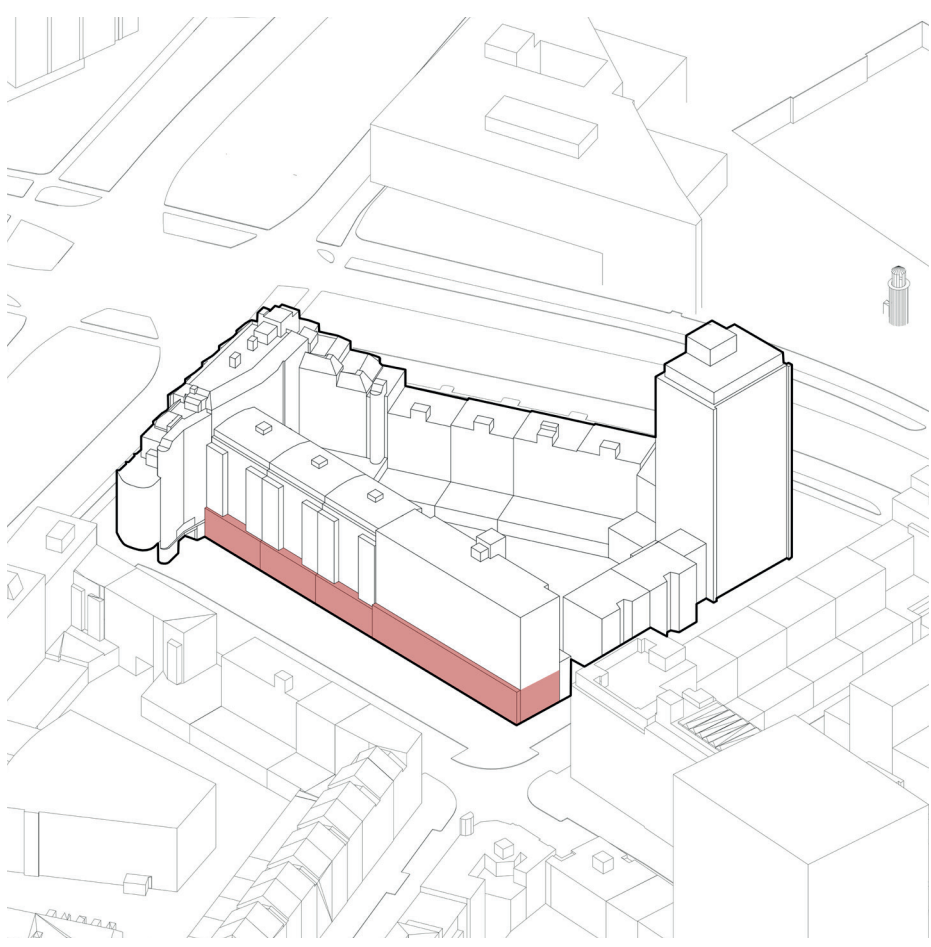




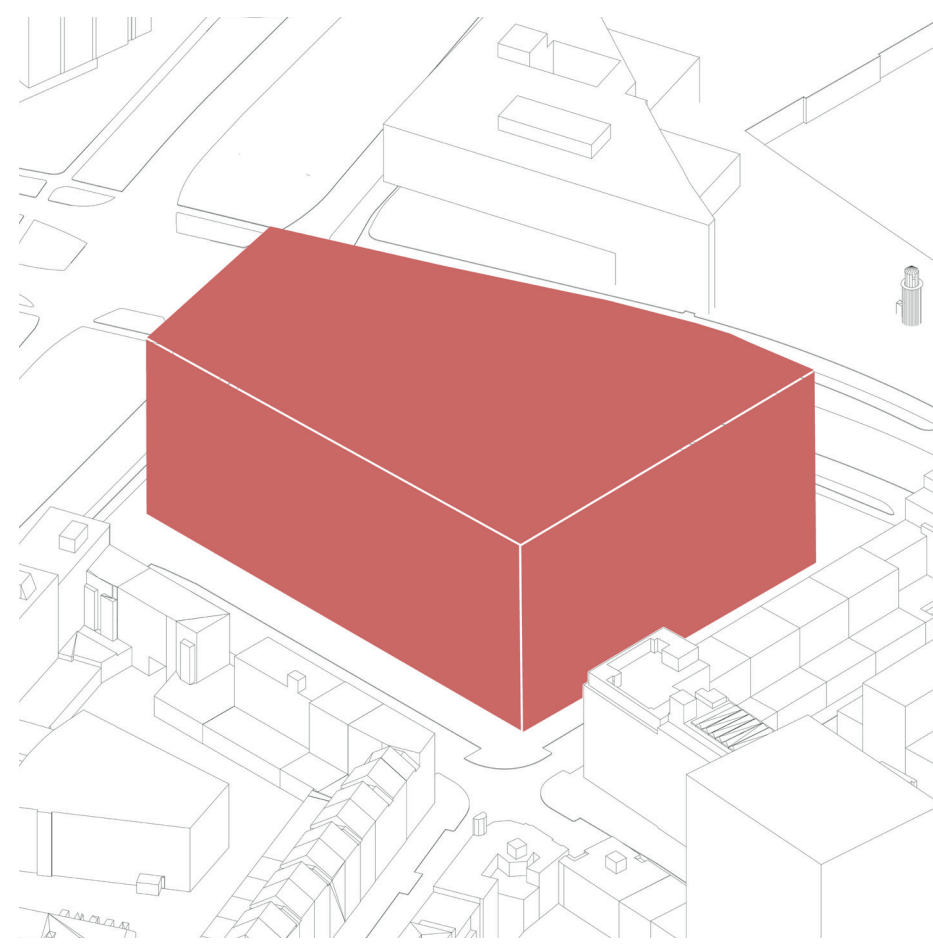
# ROTTERDAM URBAN SCHOOL

## THE EXPLORATION OF NEW EDUCATIONAL TYPOLOGIES IN THE DUTCH SETTING

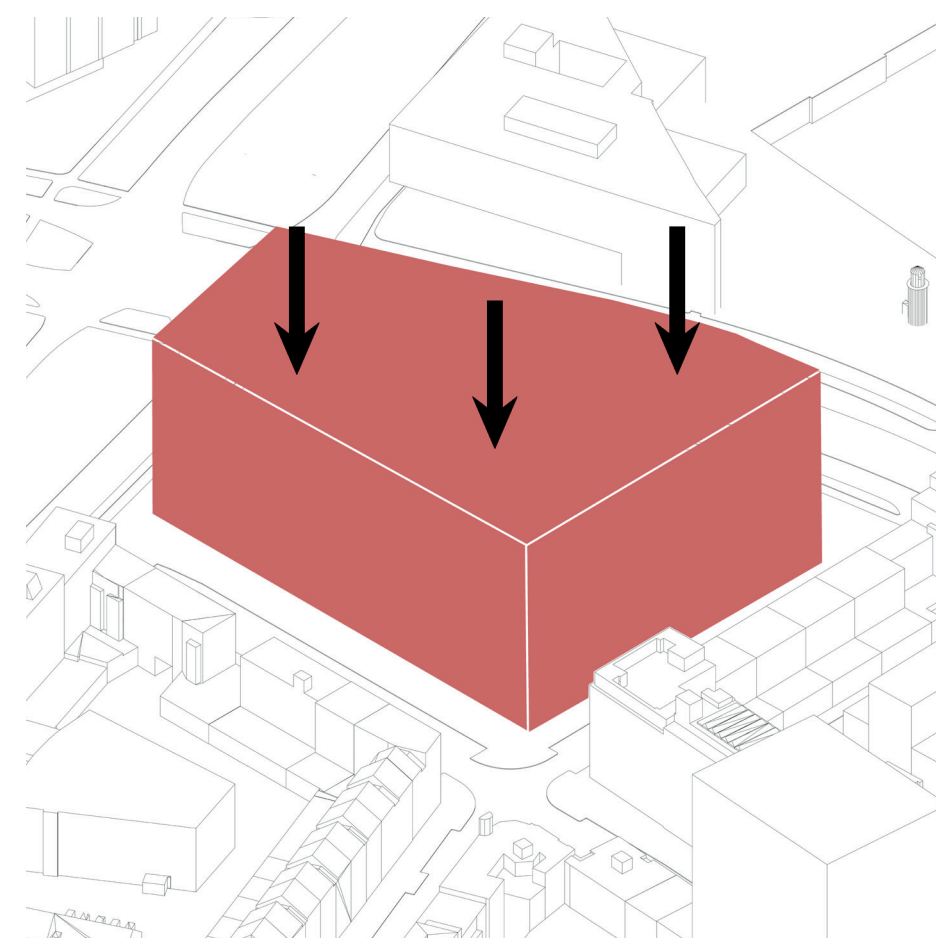
IVO DE BRUIN



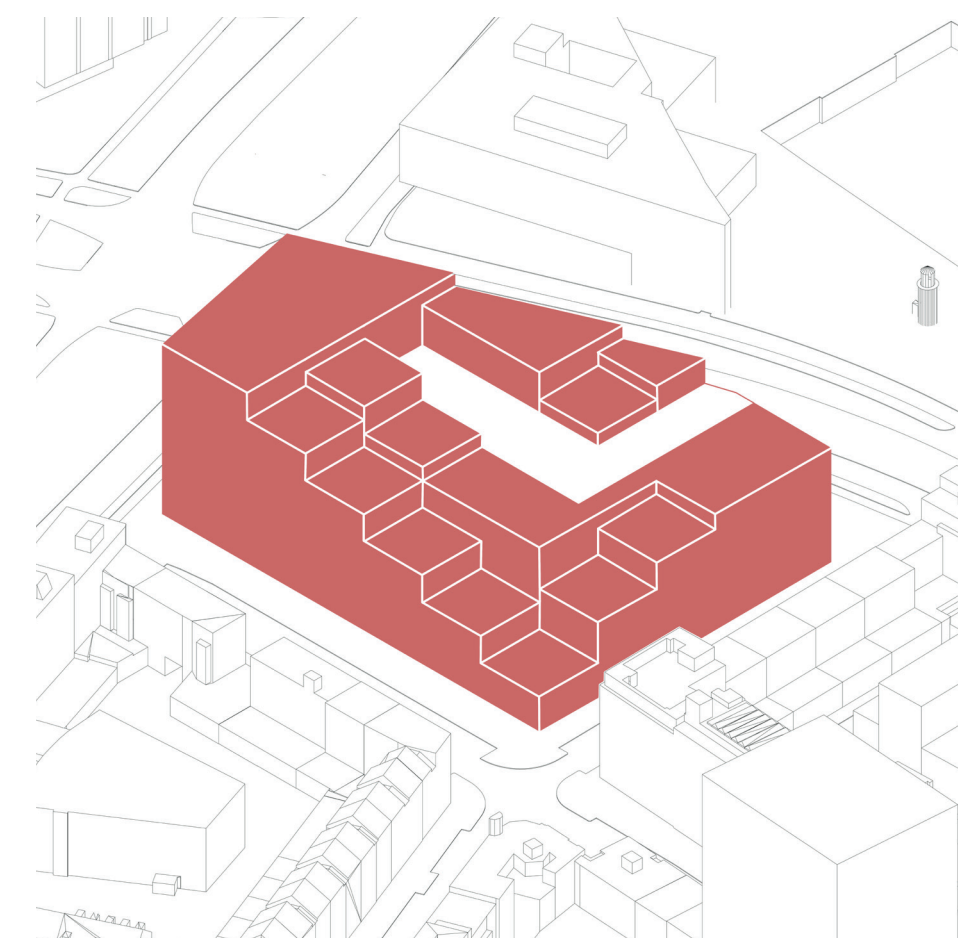
EXISTING SITUATION



URBAN FABRIC VOLUME



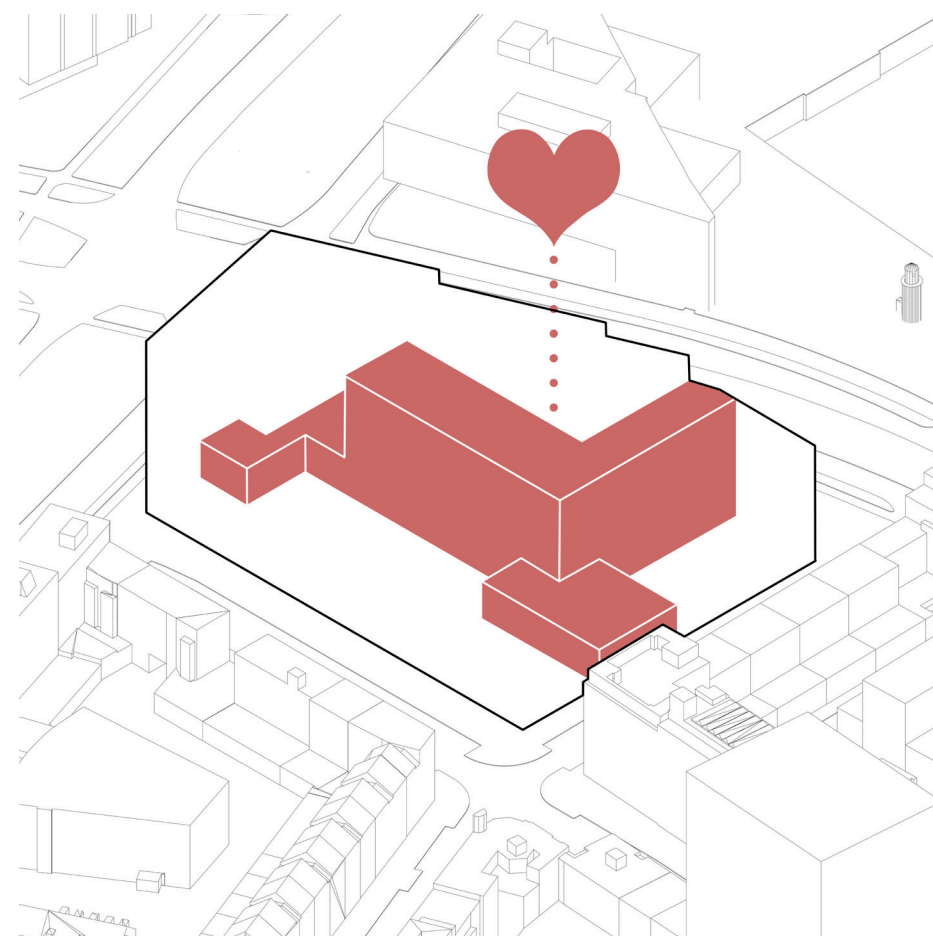
MID-RISE PUSH DOWN



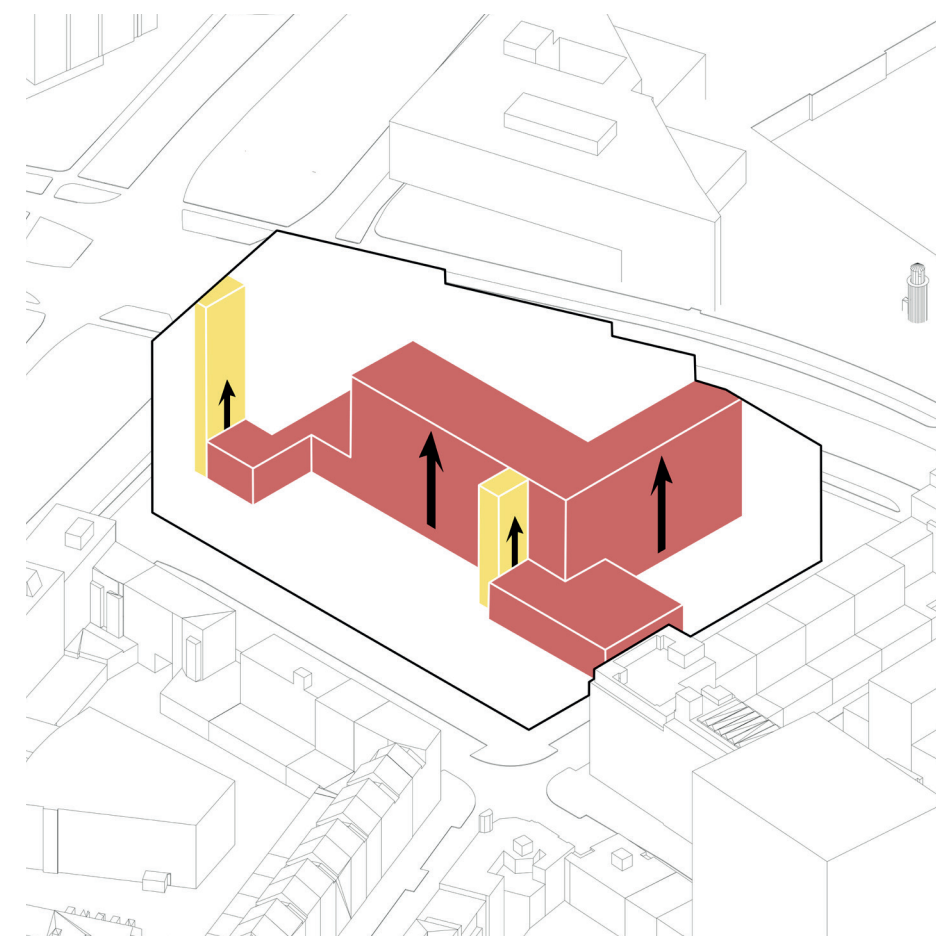
BUILDING VOLUME



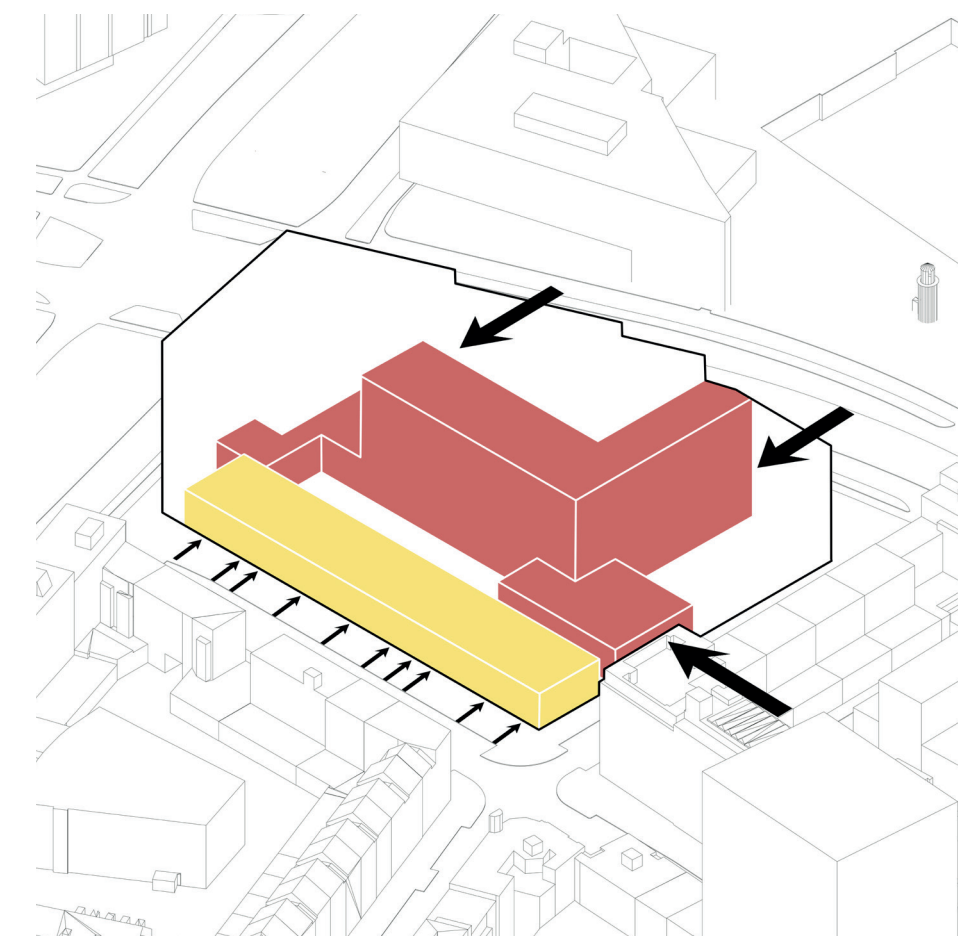
TERRACES



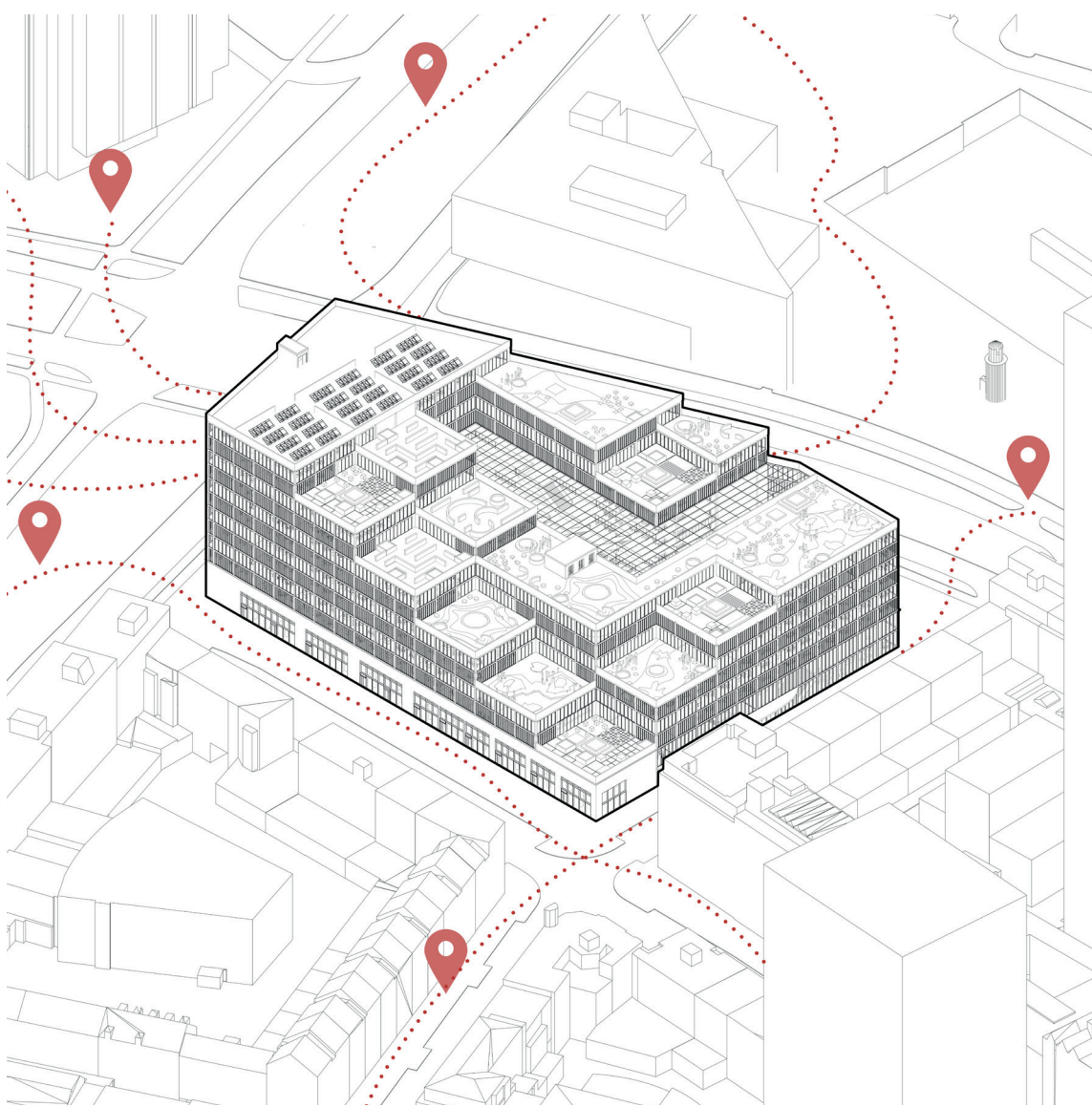
CENTRAL HALL



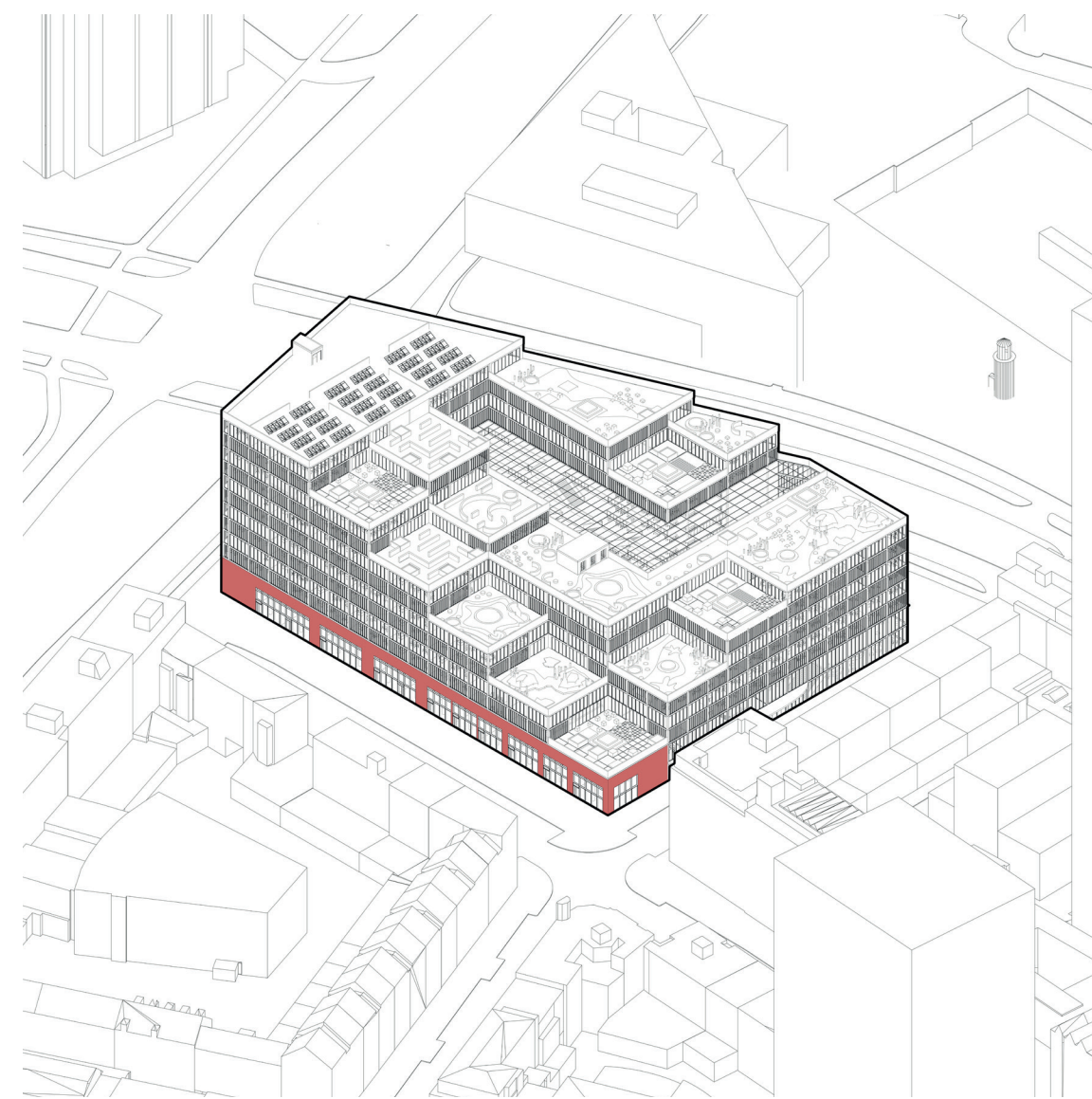
VERTICAL CIRCULATION



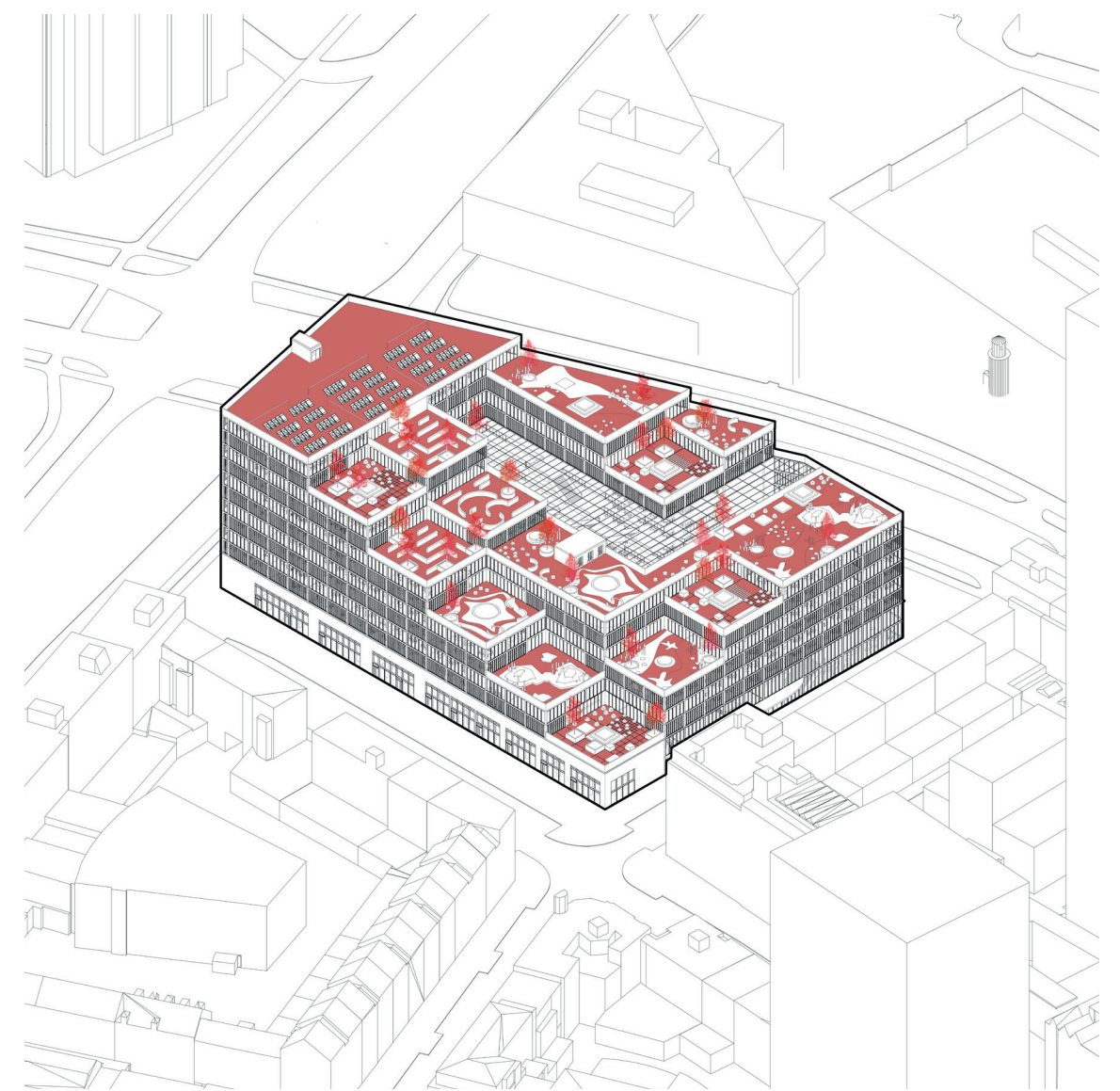
ENTRANCES & ENGAGEMENT



ACCESSIBILITY



OLD & NEW



TERRACES

The central location of the building means that from each side transportation is accessible. Entrances and engagement on each side of the building control the big student bodies that inhabit the building, in this way congestion problems are avoided.

From the old situation the Restaurants have been incorporated in the design for a continuous stream of activity day and night. Their facade is redesigned to show a clear difference between school restaurant.

The most important feature of the building are the terraces, ensuring the accessibility from each level to outdoor space. Differentiations between the spaces is created through the a variation in designs. The highest roof space is used for creating sustainable energy and building support units.

