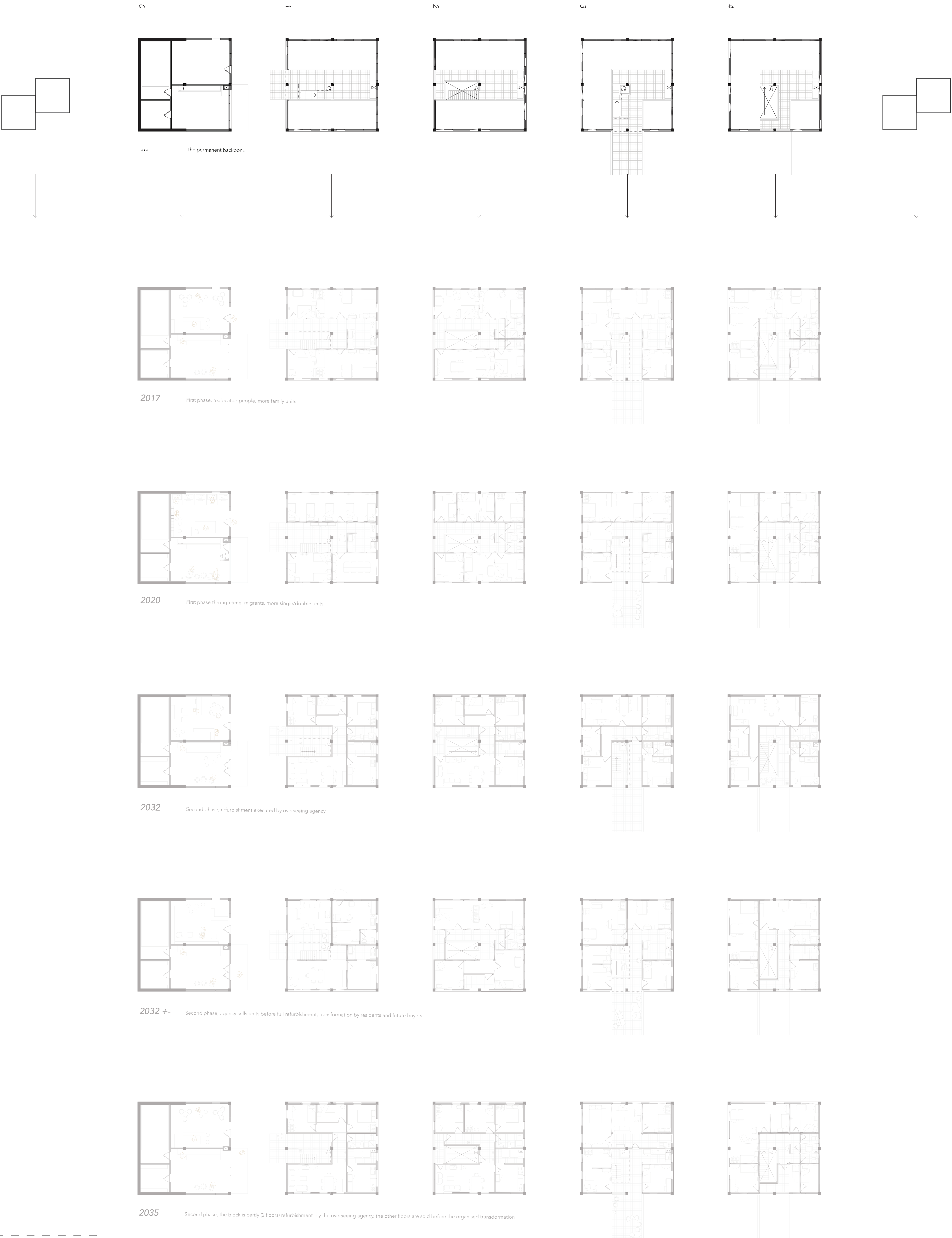


# THE TRANSIENT BLOCK / UNIT

Monica Carlota Lelieveld + Dwelling, Global Housing + Affordable Housing for Sustainable Development in the Global Urban South, Addis Ababa + Nelson Mota, Dick van Gameren, Anteneh Tola + 28 June 2017

Phasing and tranformation of the block within the cluster is focused on the temporal infill by the various inhabitants; relocated families, migrants (alone or with their family), middle class families or single persons. The transformation of the floorplan is defined by the appropriation of it inhabitants through the removal or addition of certain materials.

There is not a single static plan, as the project will be in a constant state of transition. With this in mind, the clusterplans (on the right) are drawn as a backbone of the project. The infill is left open for negotiation, as it will be up to the inhabitants and other stakeholders to develop this. Now, it is up to you to play and compose variations with the floorplans and different scenarios, which you can find below.





# THE TRANSIENT BLOCK / UNIT

Monica Carlota Lelieveld + Dwelling, Global Housing + Affordable Housing for Sustainable Development in the Global Urban South, Addis Ababa + Nelson Mota, Dick van Gameren, Anteneh Tola + 28 June 2017

