



TRANSFORMATION BY RUINATION

activation of centro gaitan

Methods and Analysis graduation studio:
Positions in Practice
Bogotá, Colombia

P5 presentation 27-06-2019



Bogotá, the city and its mountains



Bogotá, the city from its mountains



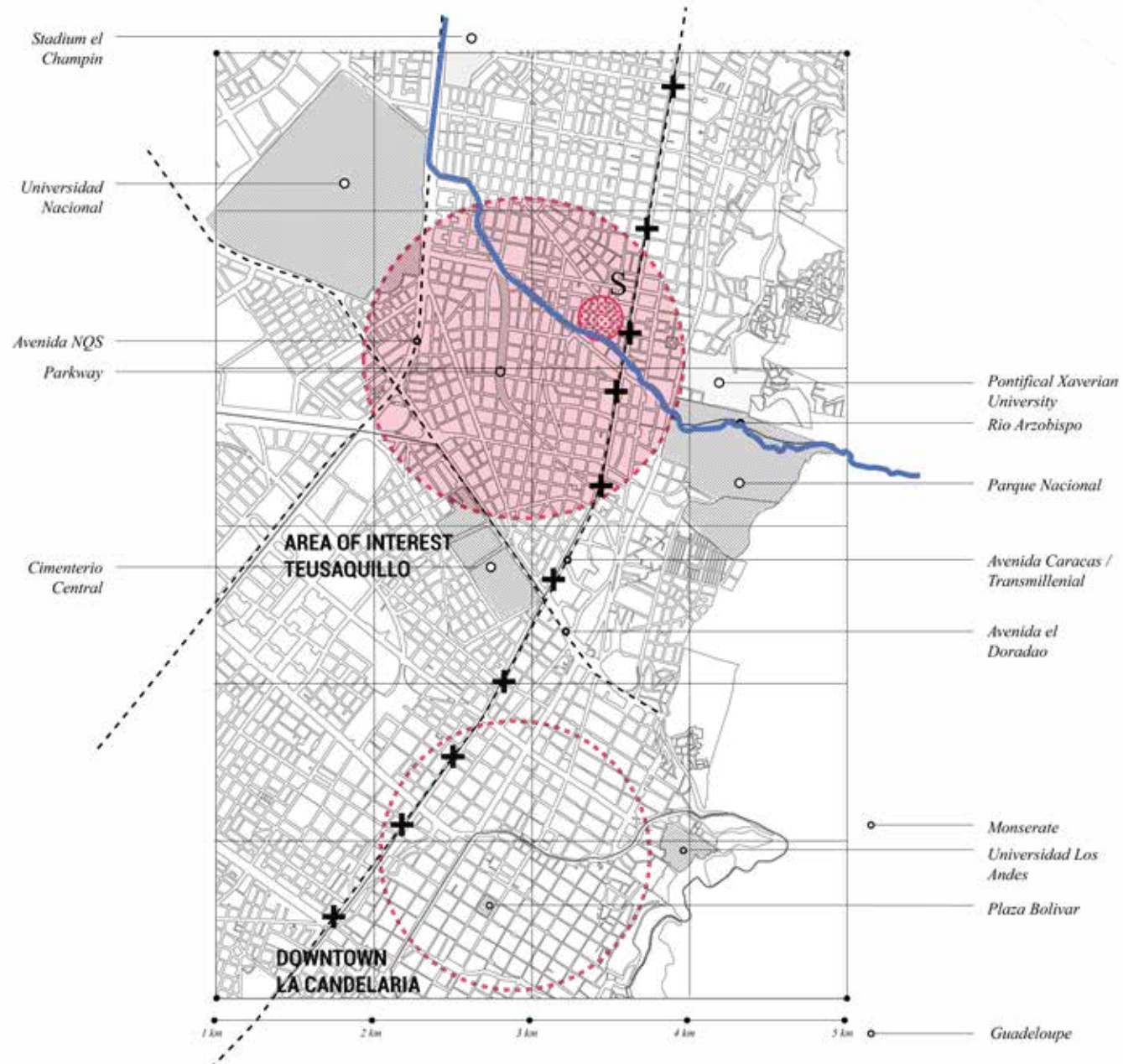
Transmilenio, the way to move 1.5 mil people a day



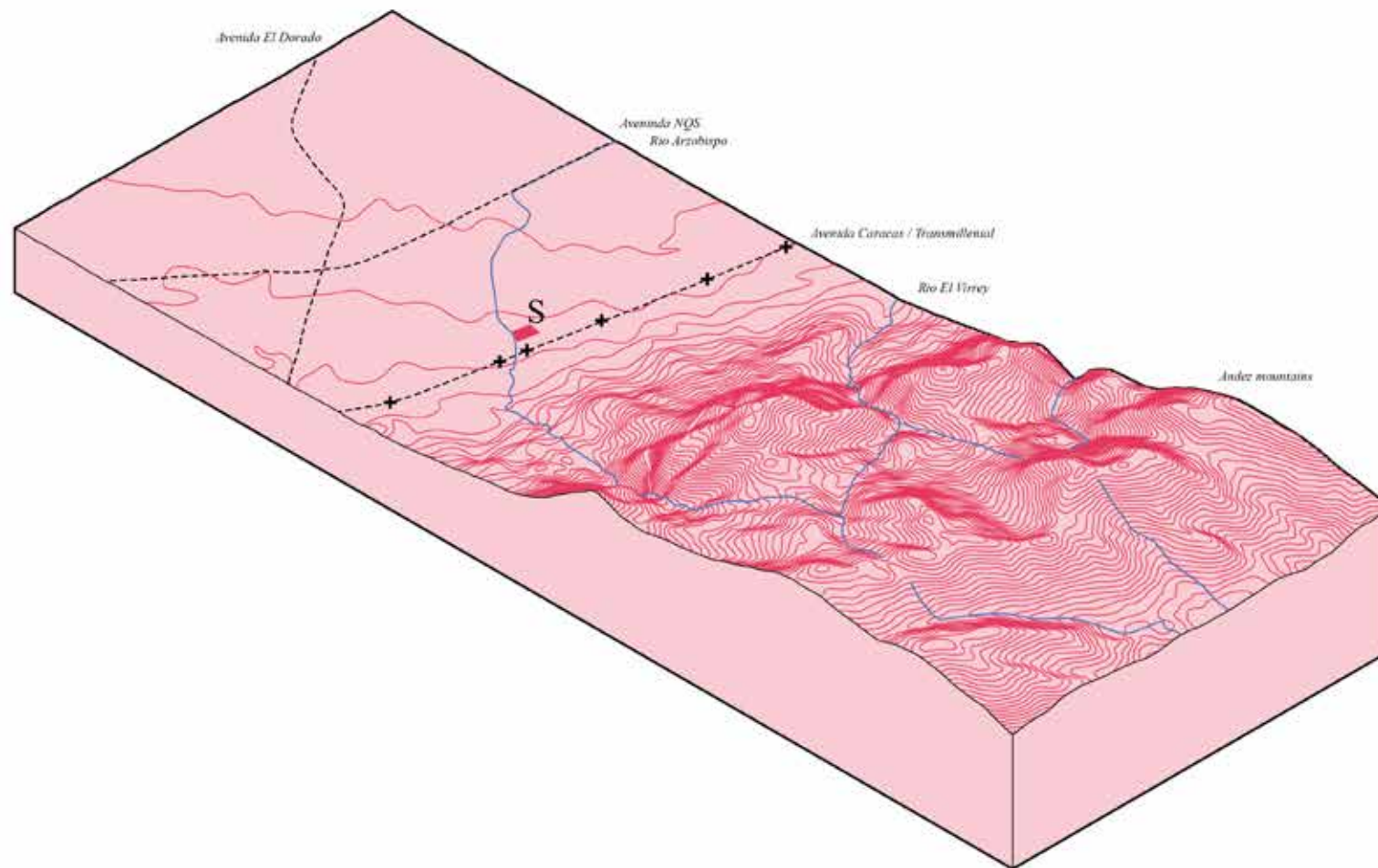
Car lanes become a bike circuit.



experimental workshop in Teusaquillo



location in Bogota



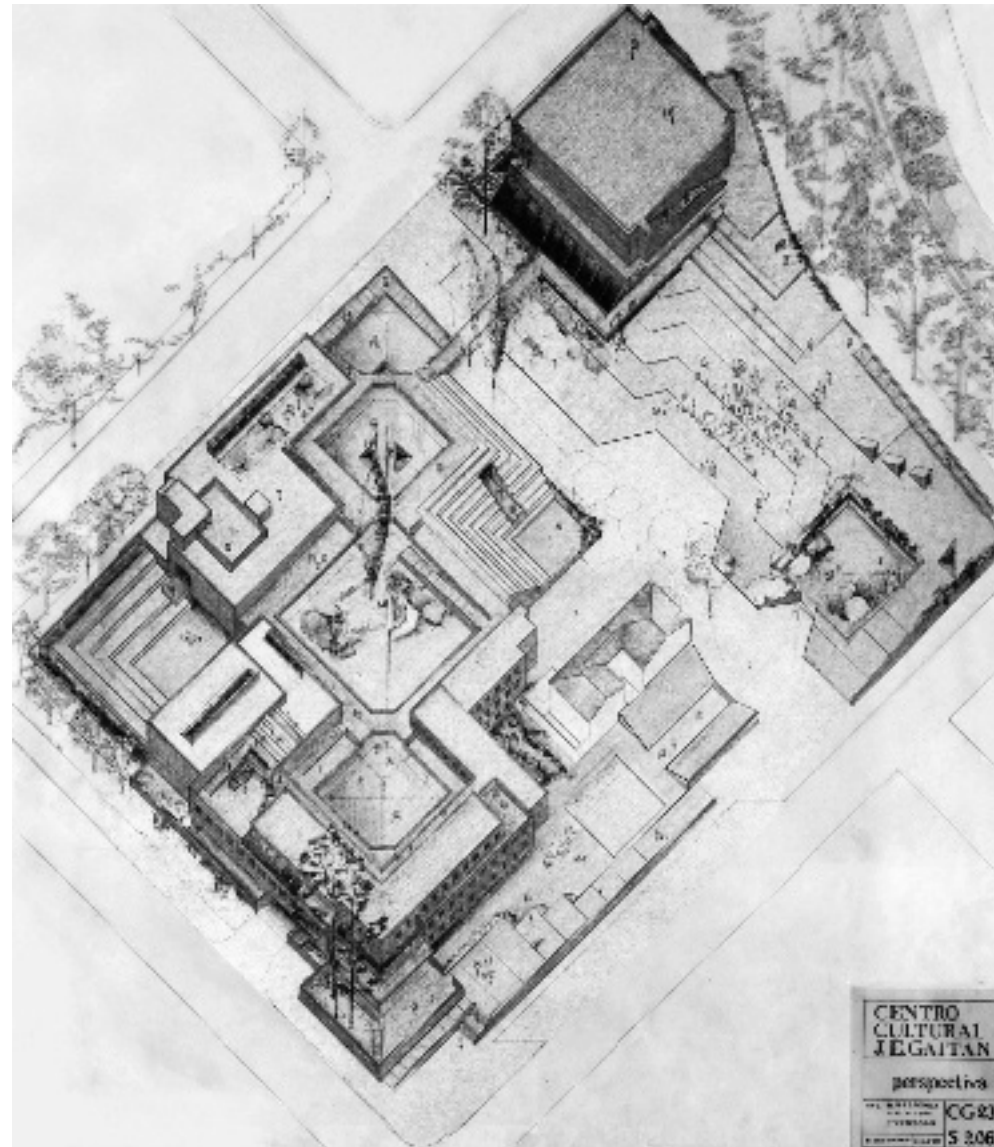
site in relation to the
mountains



mountains from Teusaquillo



river as highly potential area



Centro Gaitán, along Rio Arzobispo



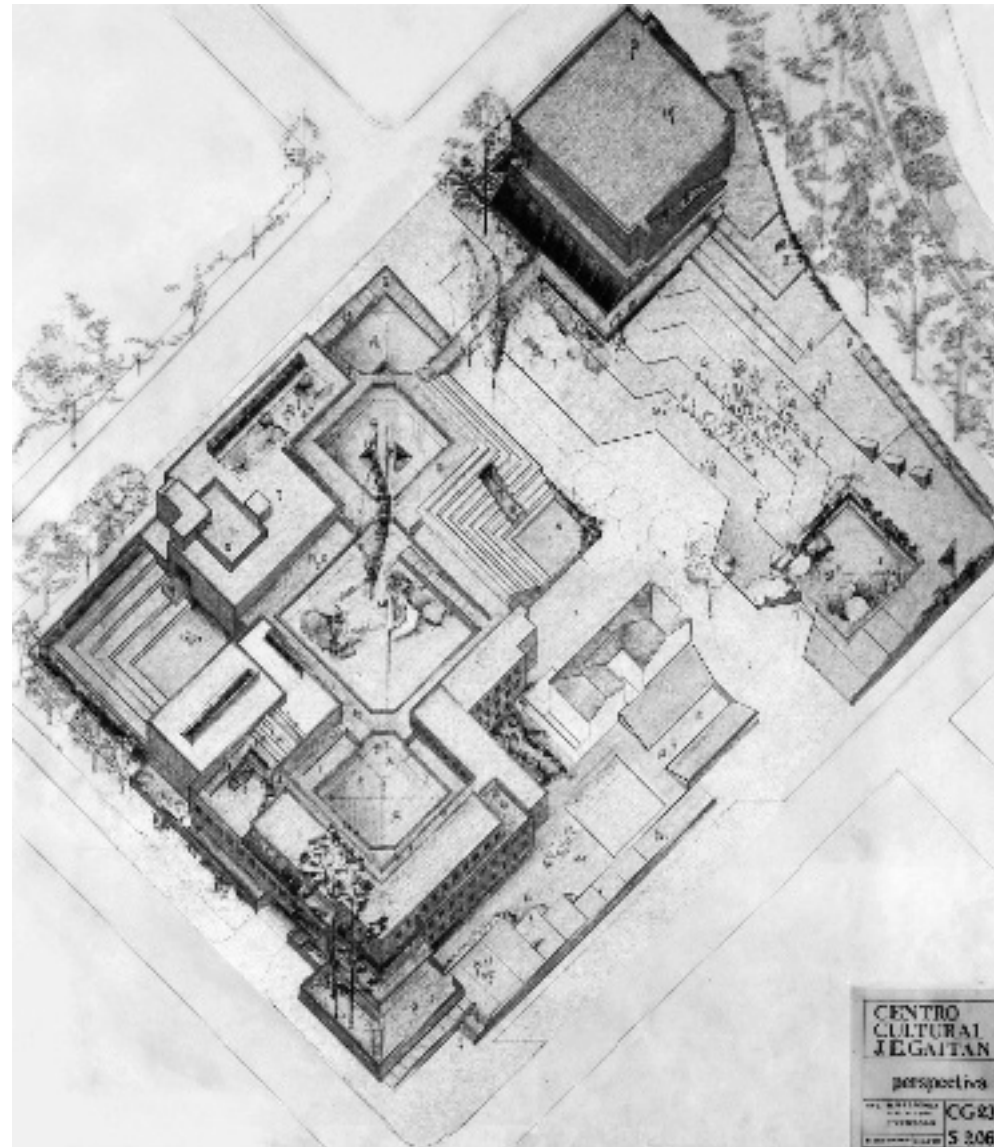
Jorge Eliécer Gaitán, presidential candidate in Colombia



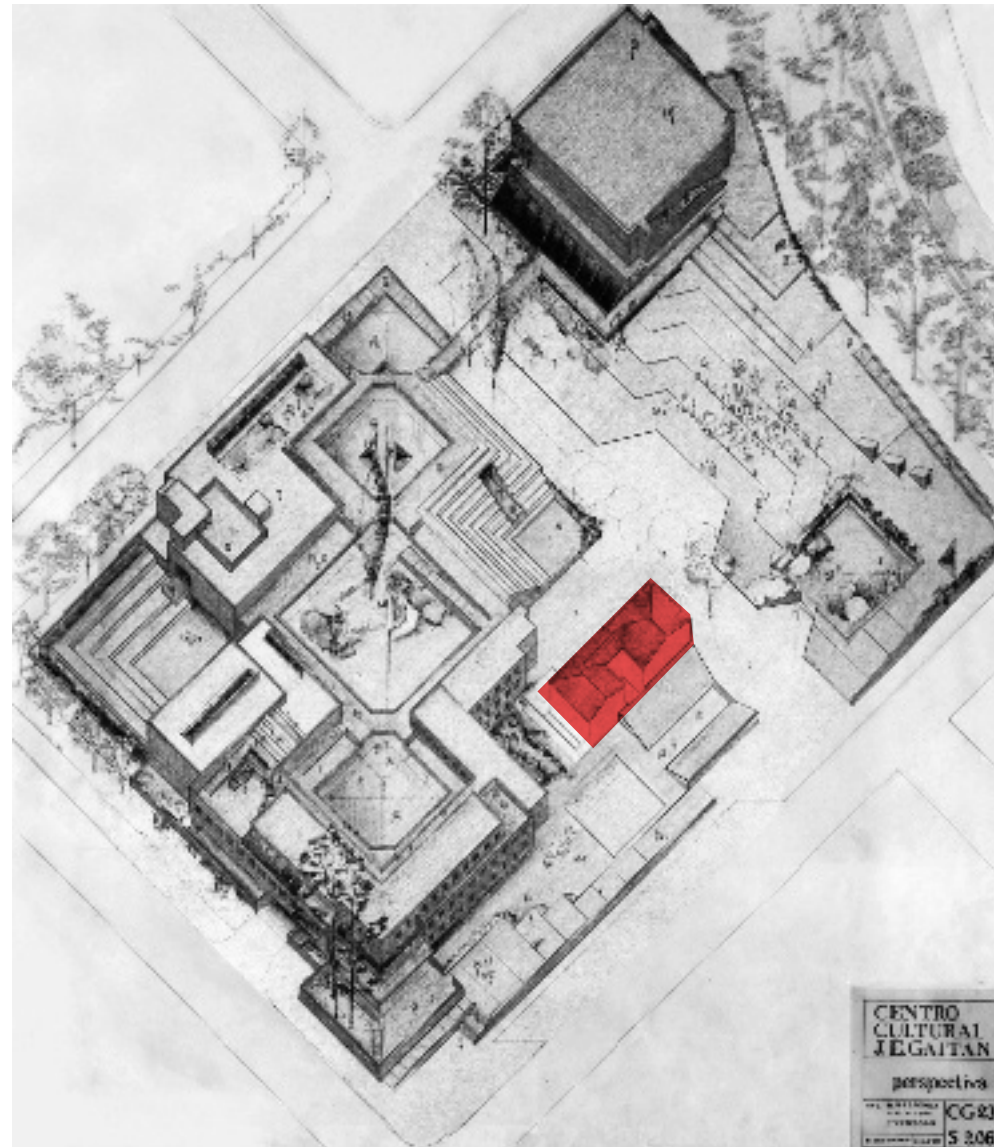
El bogatazo, 10 hour riots



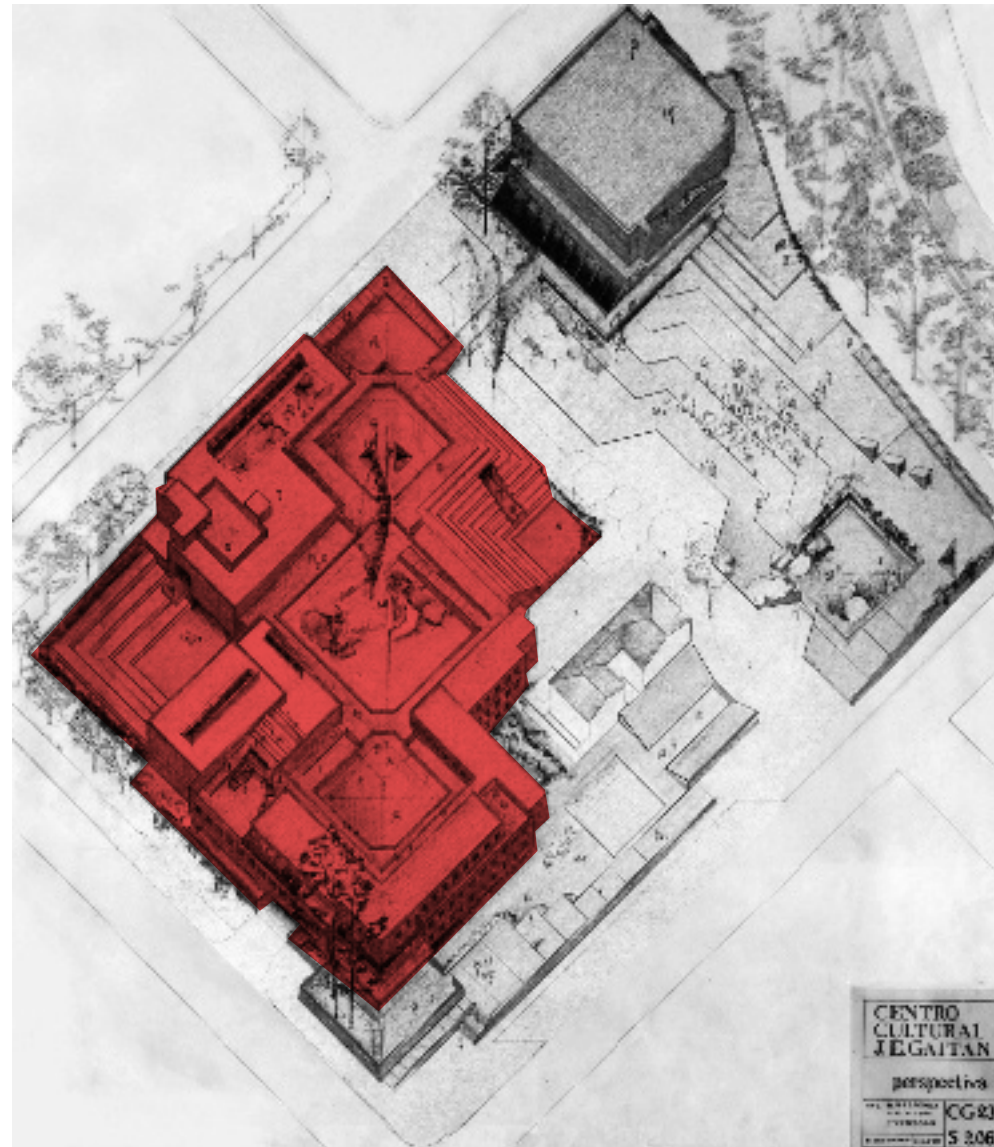
Rogelio Salmona, Colombian architect.



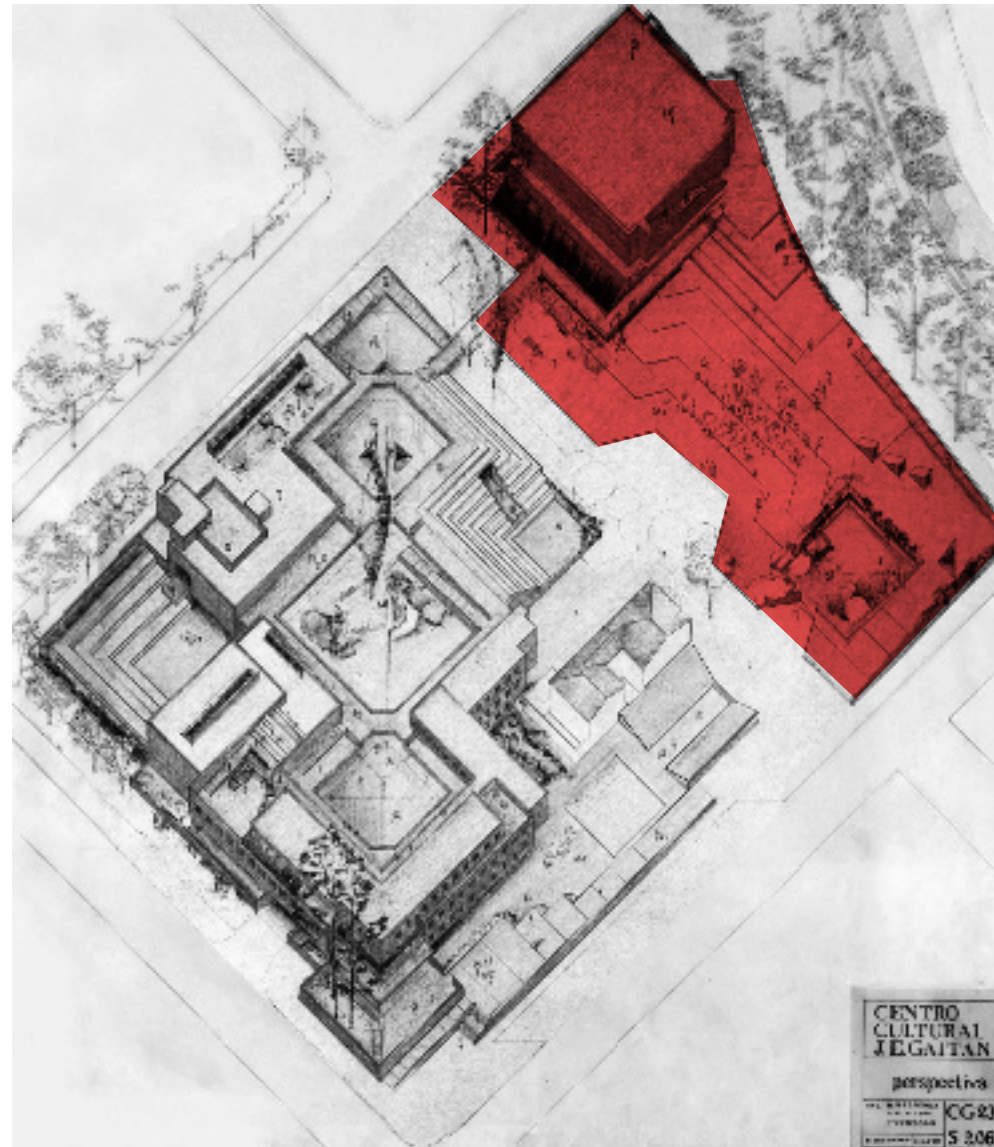
Design for Centro Gaitán



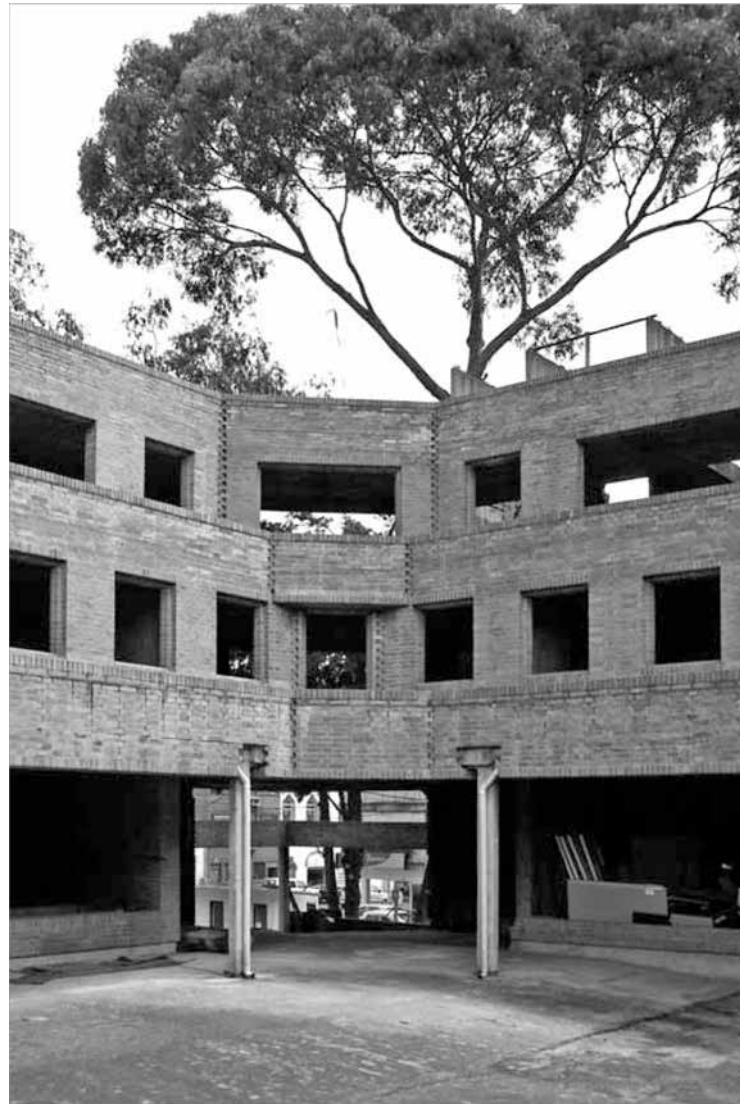
Design for Centro Gaitán



Design for Centro Gaitán



Design for Centro Gaitán



current state, national
monument



current state, grave of gaitan



current state, fenced since
1996



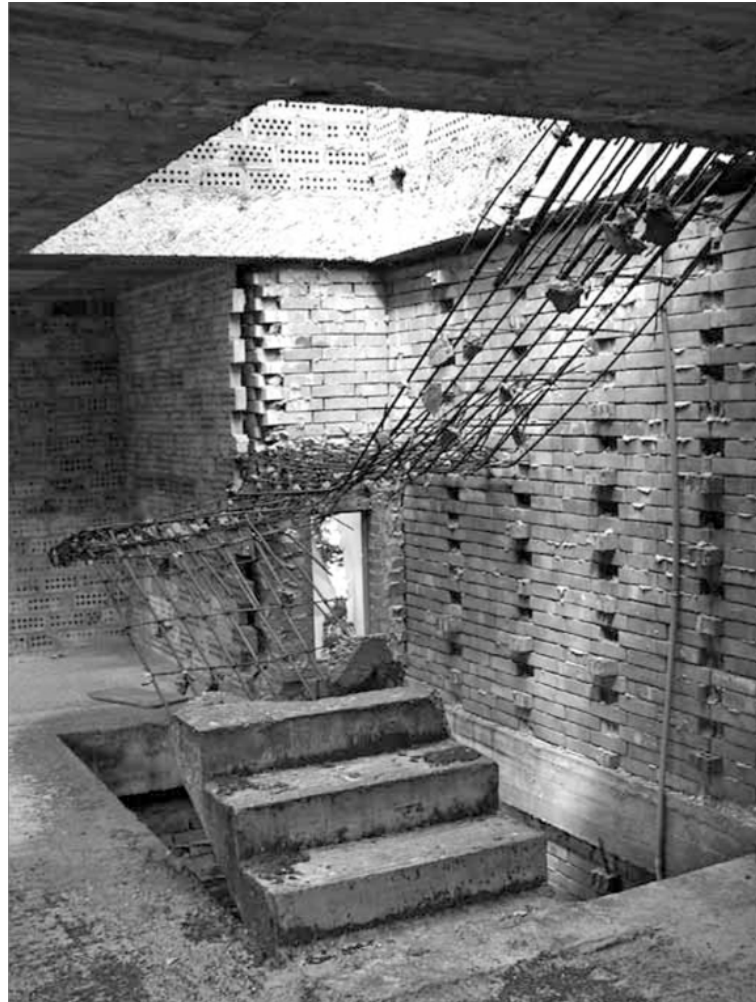
current state



current state



current state



stairs of Centro Gaitan in a state of in-betweenness, in
between construction and destruction.



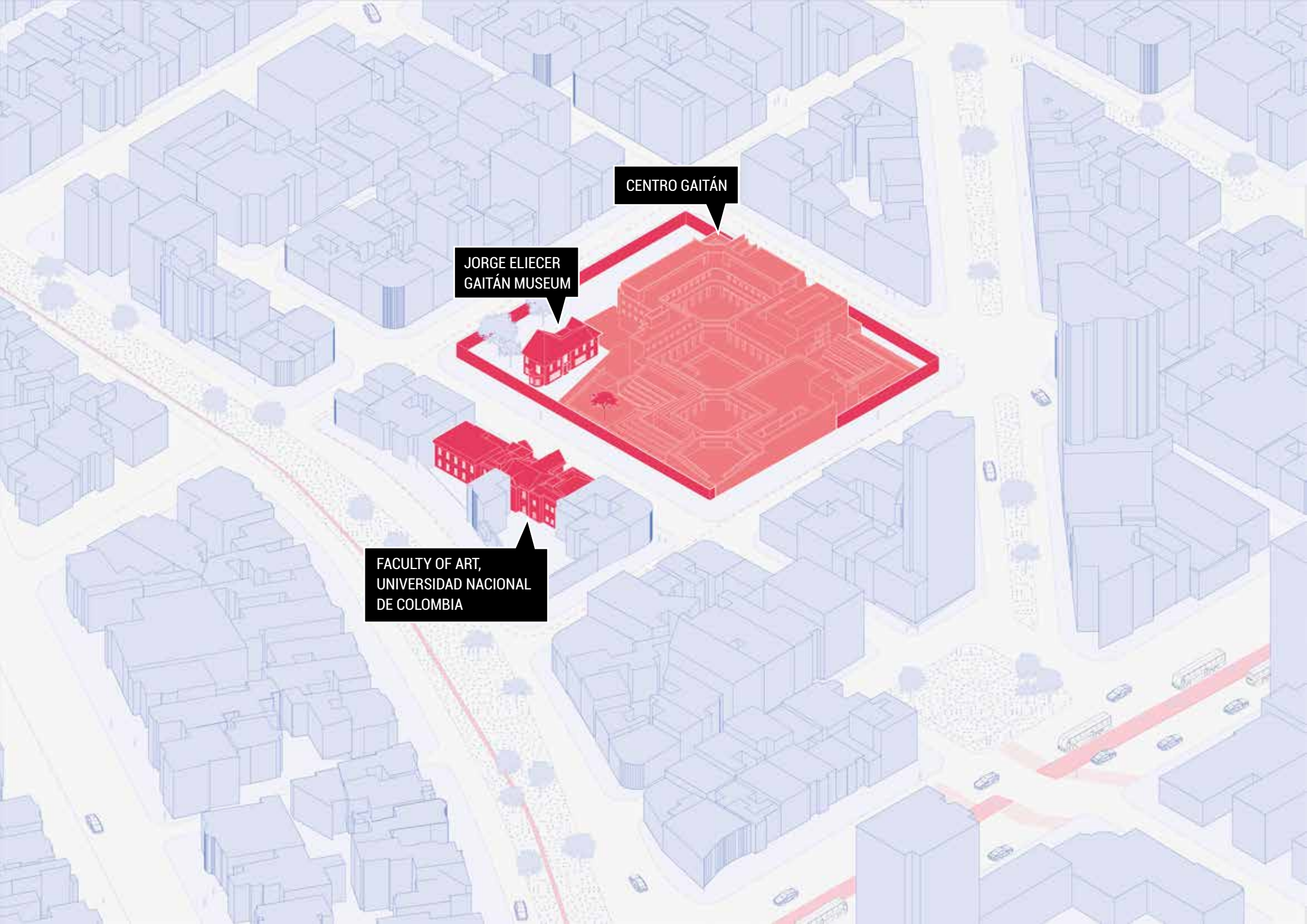
How can an architect deal with a vacant building, and create a place where the relationship between people, place and time is central?



SITE

RIO ARZOBISPO

TRANSMILENIO



CENTRO GAITÁN

JORGE ELIECER
GAITÁN MUSEUM

FACULTY OF ART,
UNIVERSIDAD NACIONAL
DE COLOMBIA



TEINCO INDUSTRIAL
TECHNOLOGY SCHOOL

This isometric map of Bogotá, Colombia, shows a dense urban grid. Buildings are represented as 3D blocks. Most buildings are light blue, while specific institutions are highlighted in red. The red buildings include the Teinco Industrial Technology School (top left), Cenda University (top center), a large complex for the Cooperative University of Colombia (top right and center), the Faculty of Art of the Universidad Nacional de Colombia (center), Casa Teatro de Bogotá (bottom left), the UninpaHu Production Center for Graphic Arts (bottom left), another Cooperative University of Colombia building (bottom center), and Colombia University (bottom right). A red line, possibly a transit route, runs diagonally from the bottom left towards the center. Small car icons are scattered on the streets.

CENDA UNIVERSITY

COOPERATIVE
UNIVERSITY OF
COLOMBIA

CASA TEATRO
DE BOGOTÁ

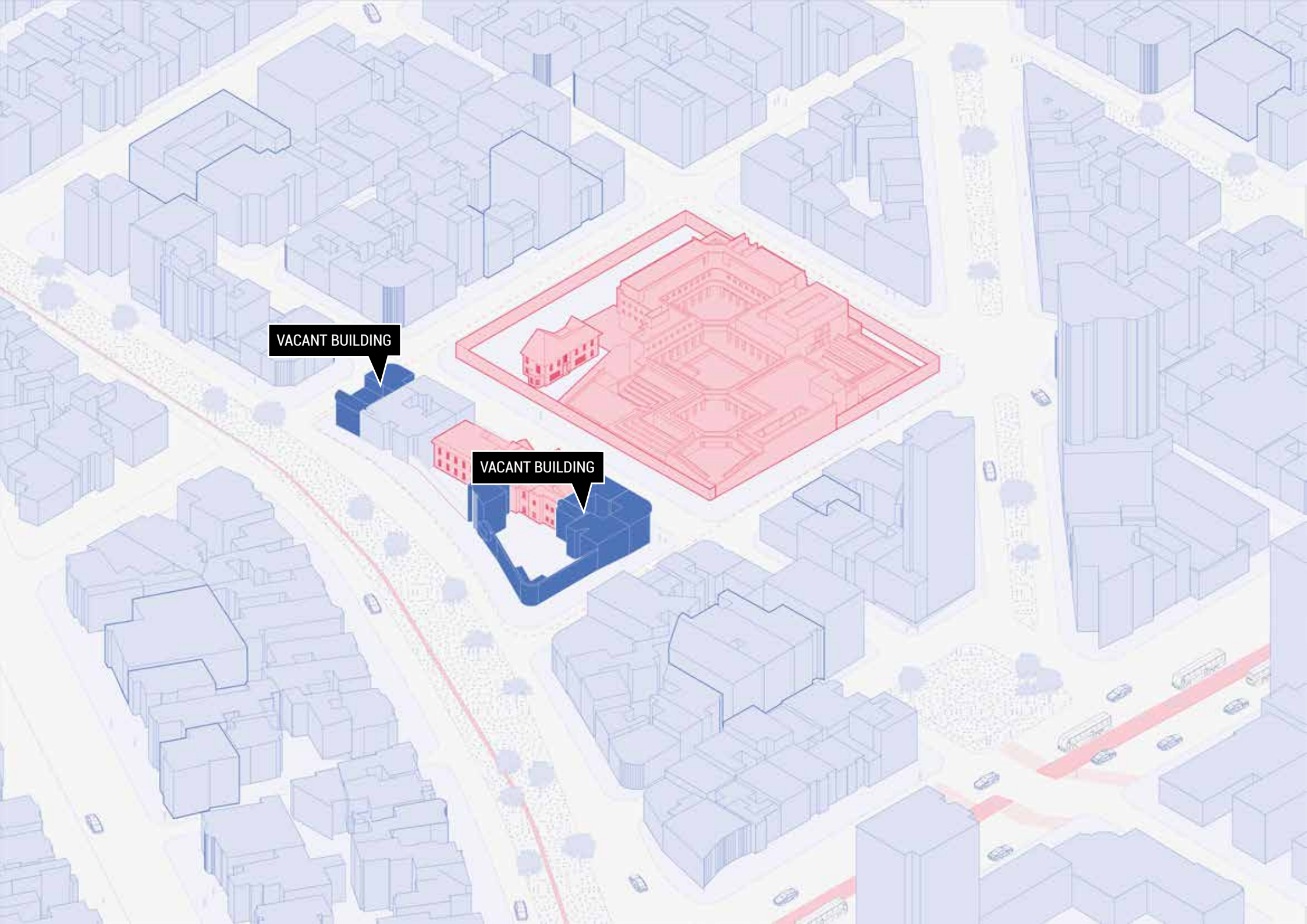
FACULTY OF ART,
UNIVERSIDAD NACIONAL
DE COLOMBIA

COOPERATIVE
UNIVERSITY OF
COLOMBIA

UNINPAHU PRODUCTION
CENTER FOR GRAPHIC
ARTS

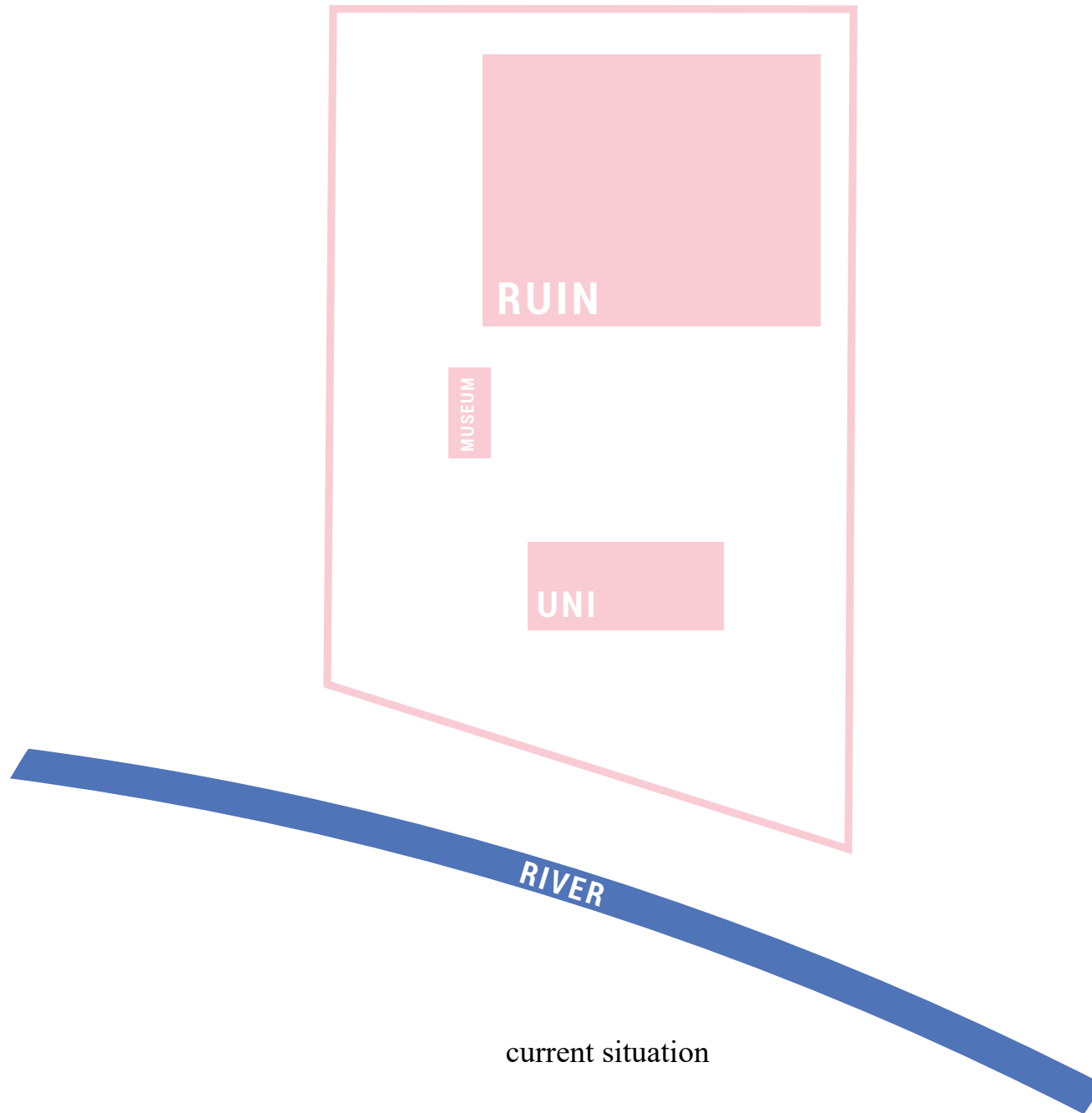
COOPERATIVE
UNIVERSITY OF
COLOMBIA

COLOMBIA UNIVERSITY

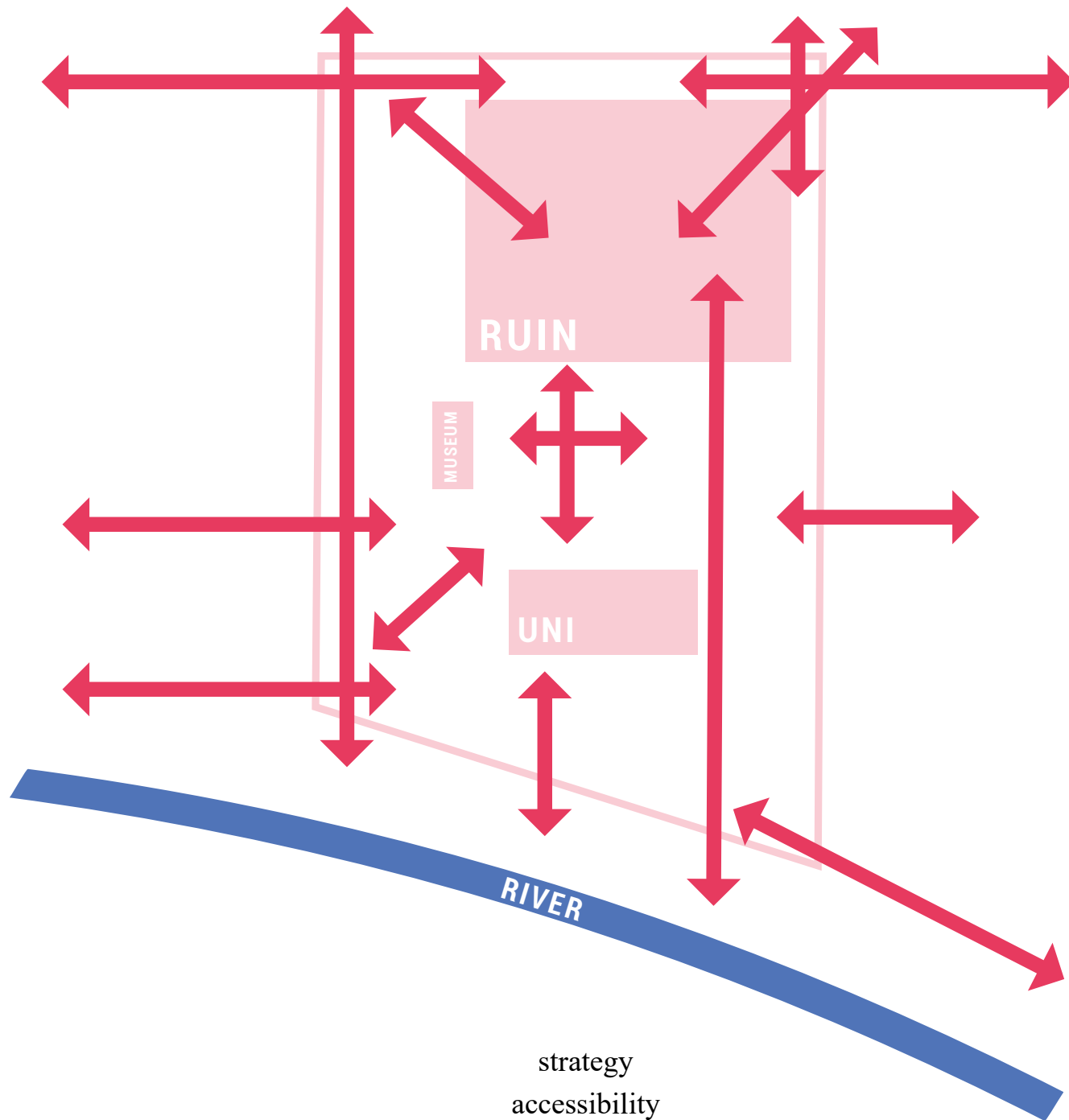


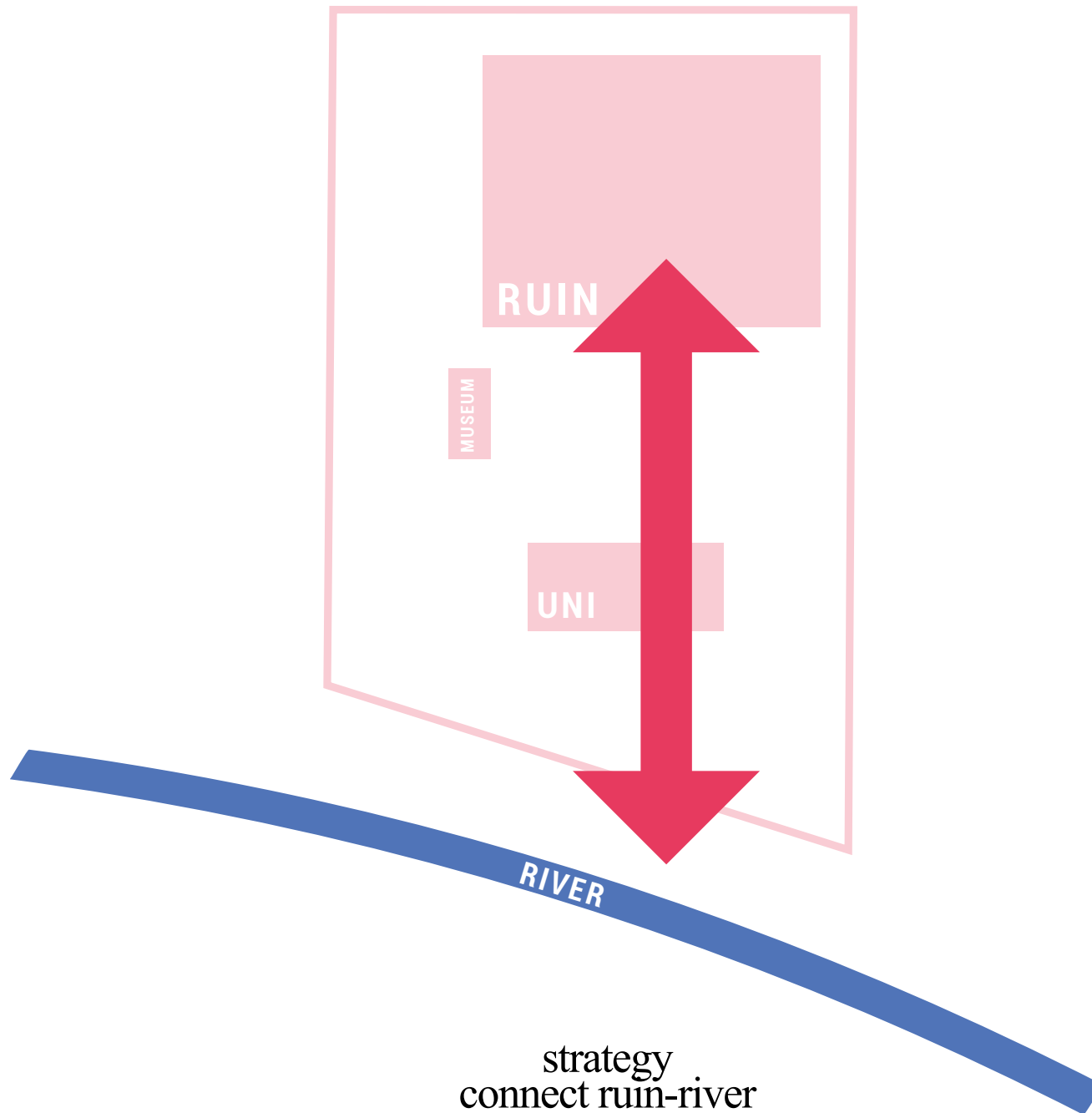
VACANT BUILDING

VACANT BUILDING

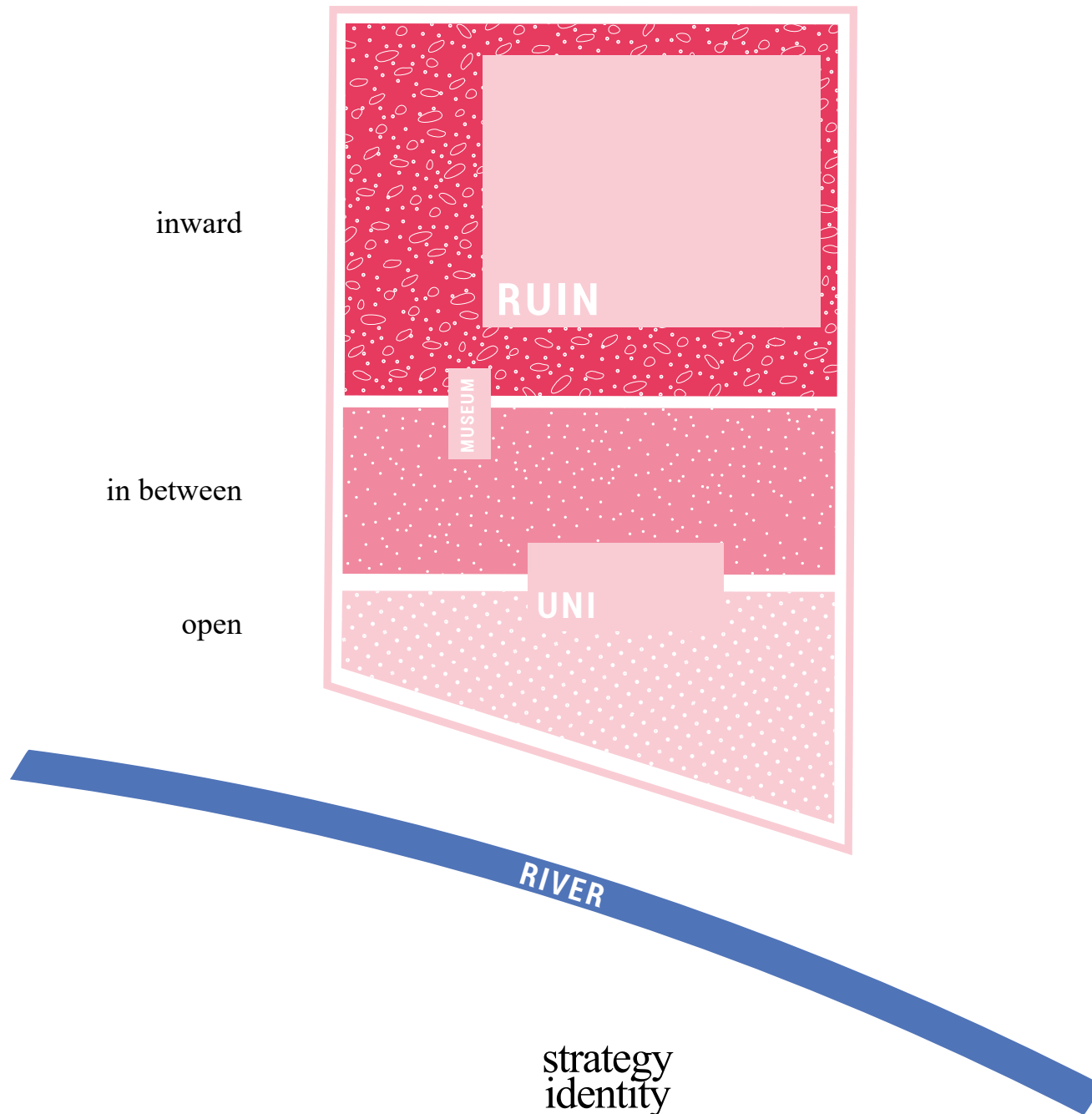


current situation





strategy
connect ruin-river



I am proposing *transformation* by **ruination**,
I create *accessibility* in the form of **platforms**,
space for observation in the form of **plateaus**,
and *collective space* in the form of **plazas**.



current situation



new situation

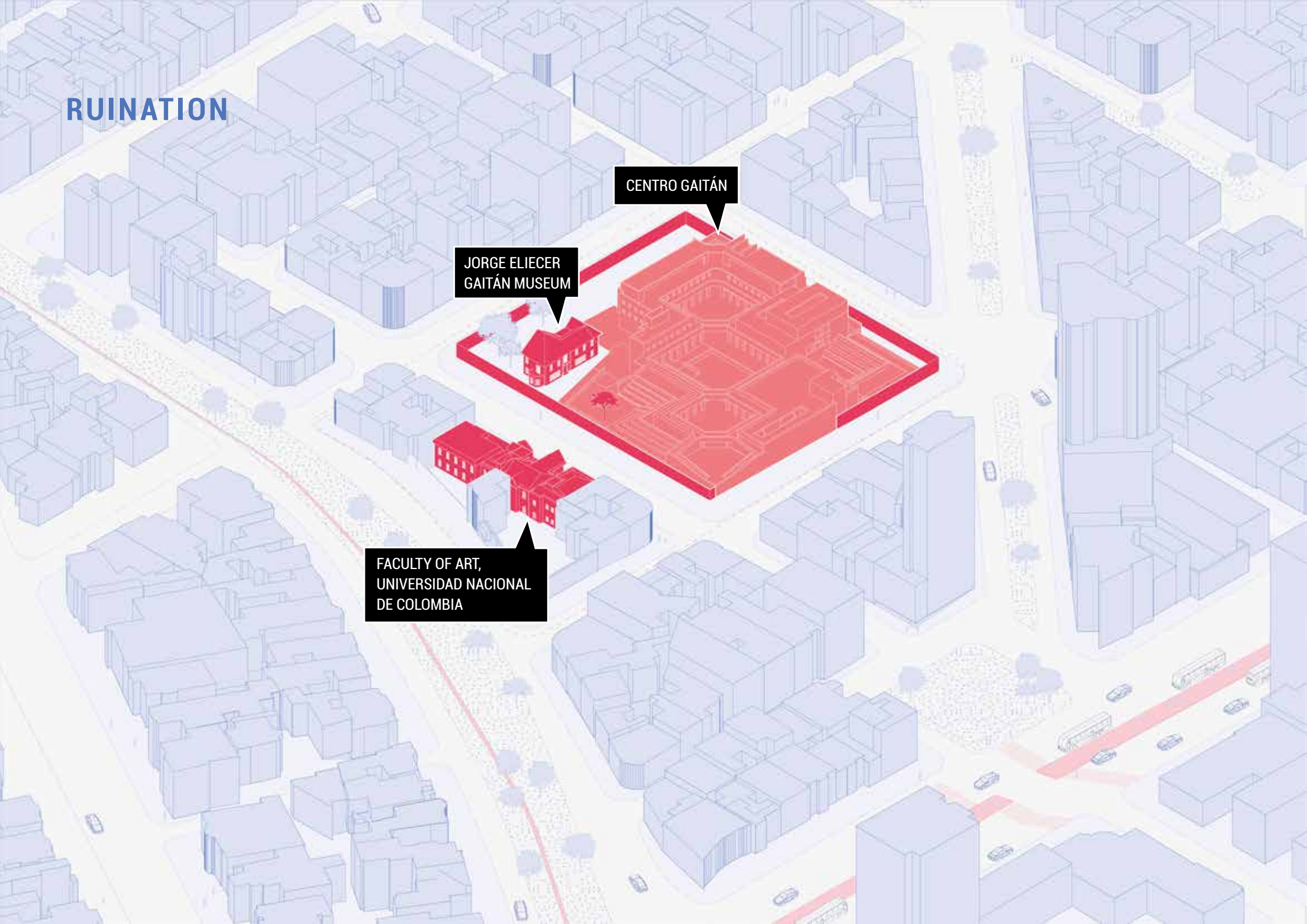
RUINATION

RUINATION

CENTRO GAITÁN

JORGE ELIECER
GAITÁN MUSEUM

FACULTY OF ART,
UNIVERSIDAD NACIONAL
DE COLOMBIA



RUINATION

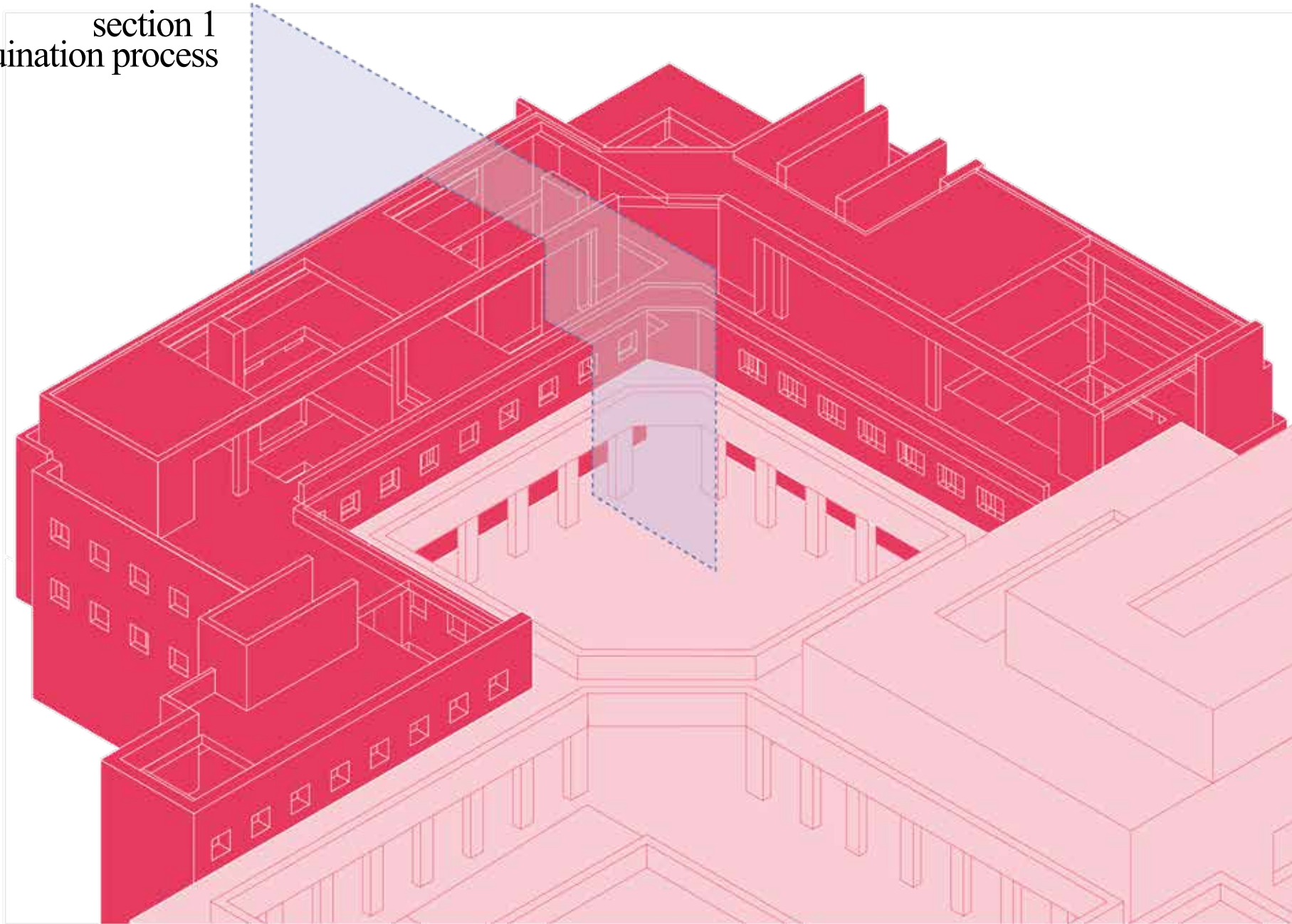


RUINATION

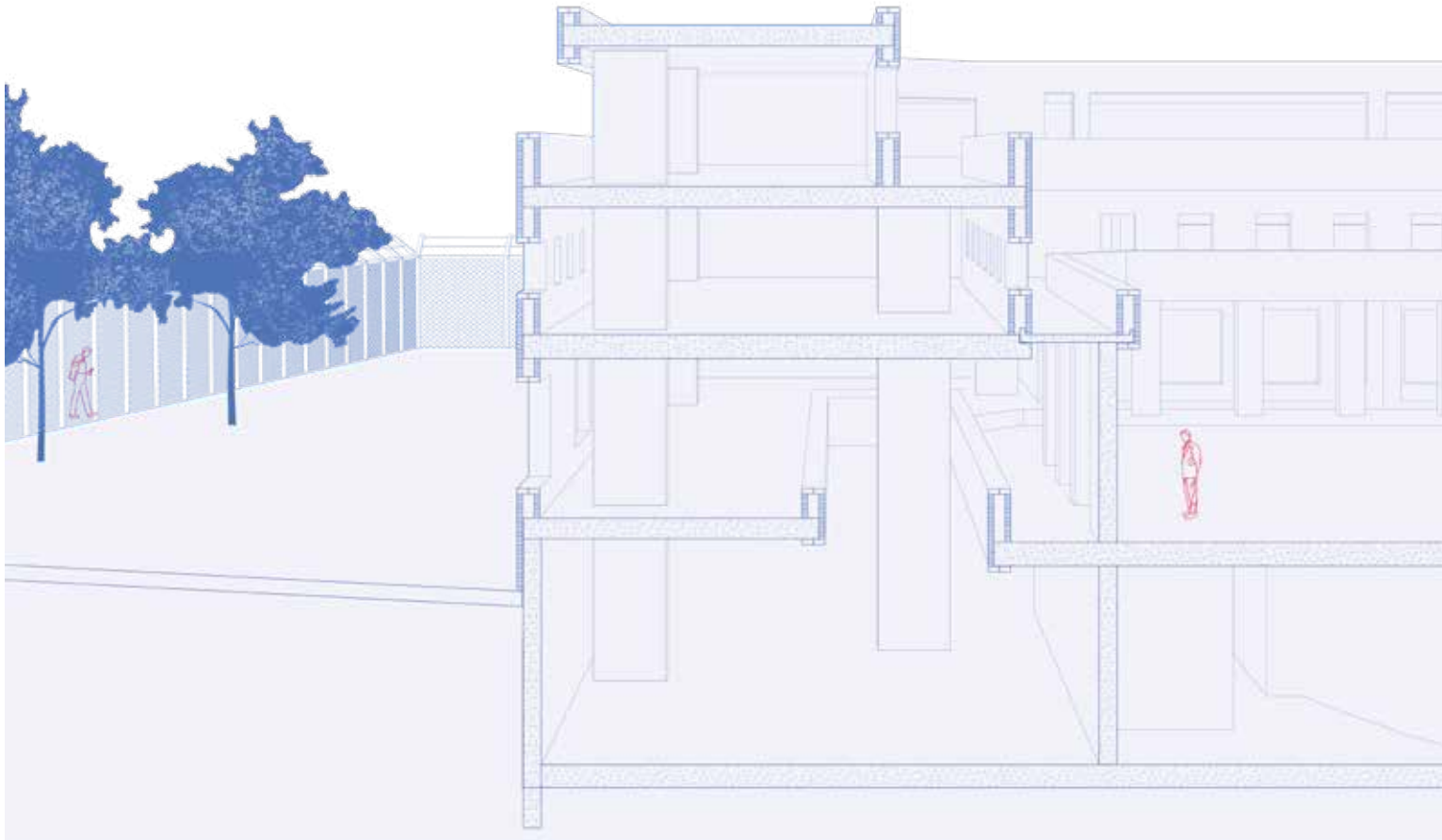


RUINATION

section 1
the ruination process

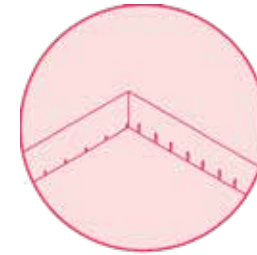
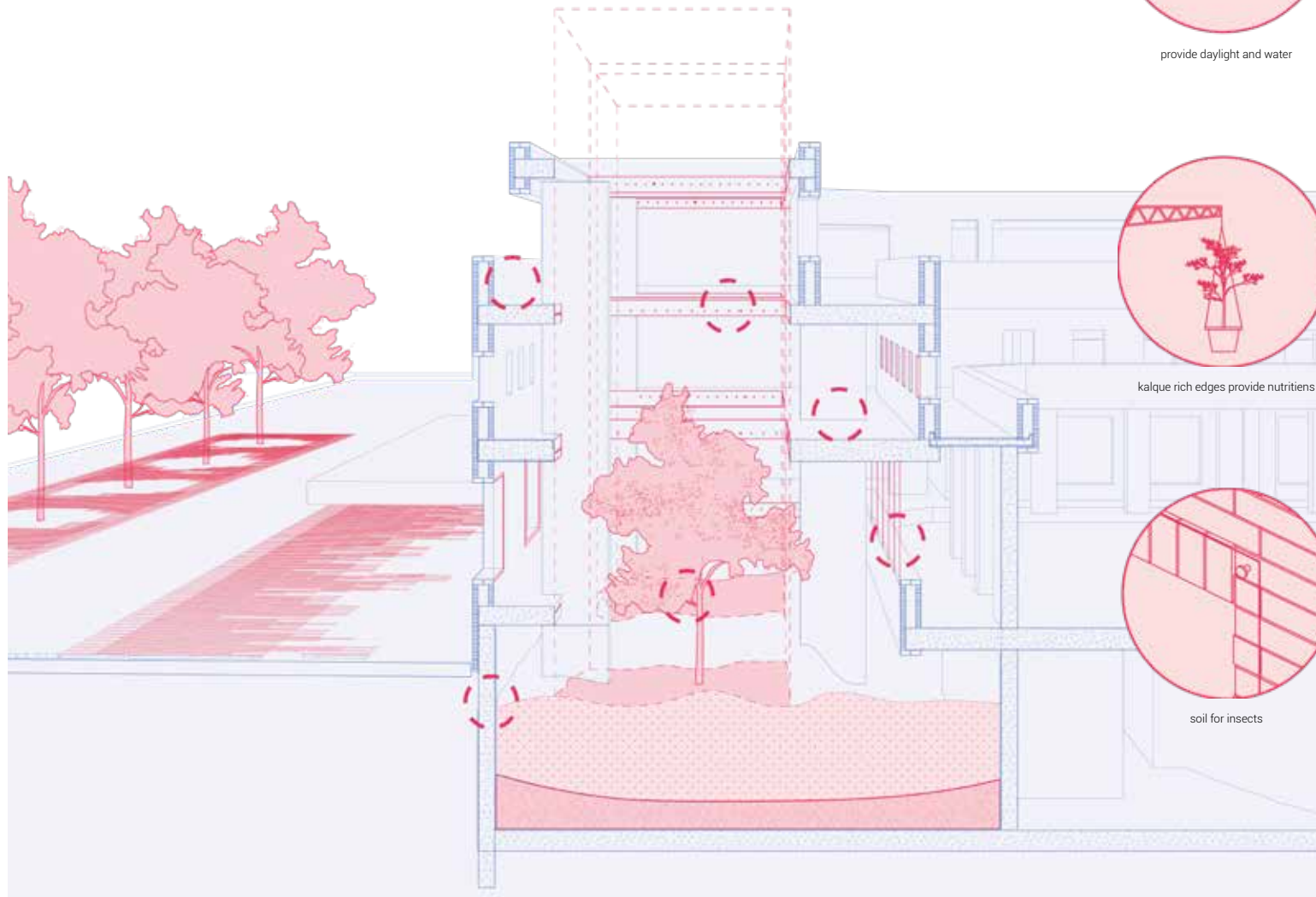


RUINATION



current situation

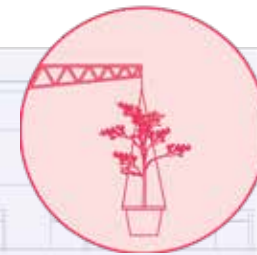
RUINATION



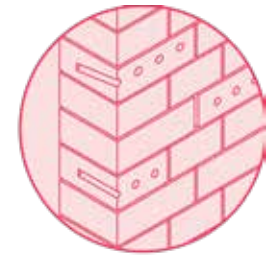
provide daylight and water



sediment settle



kalque rich edges provide nutrtiens



shelter and cracking



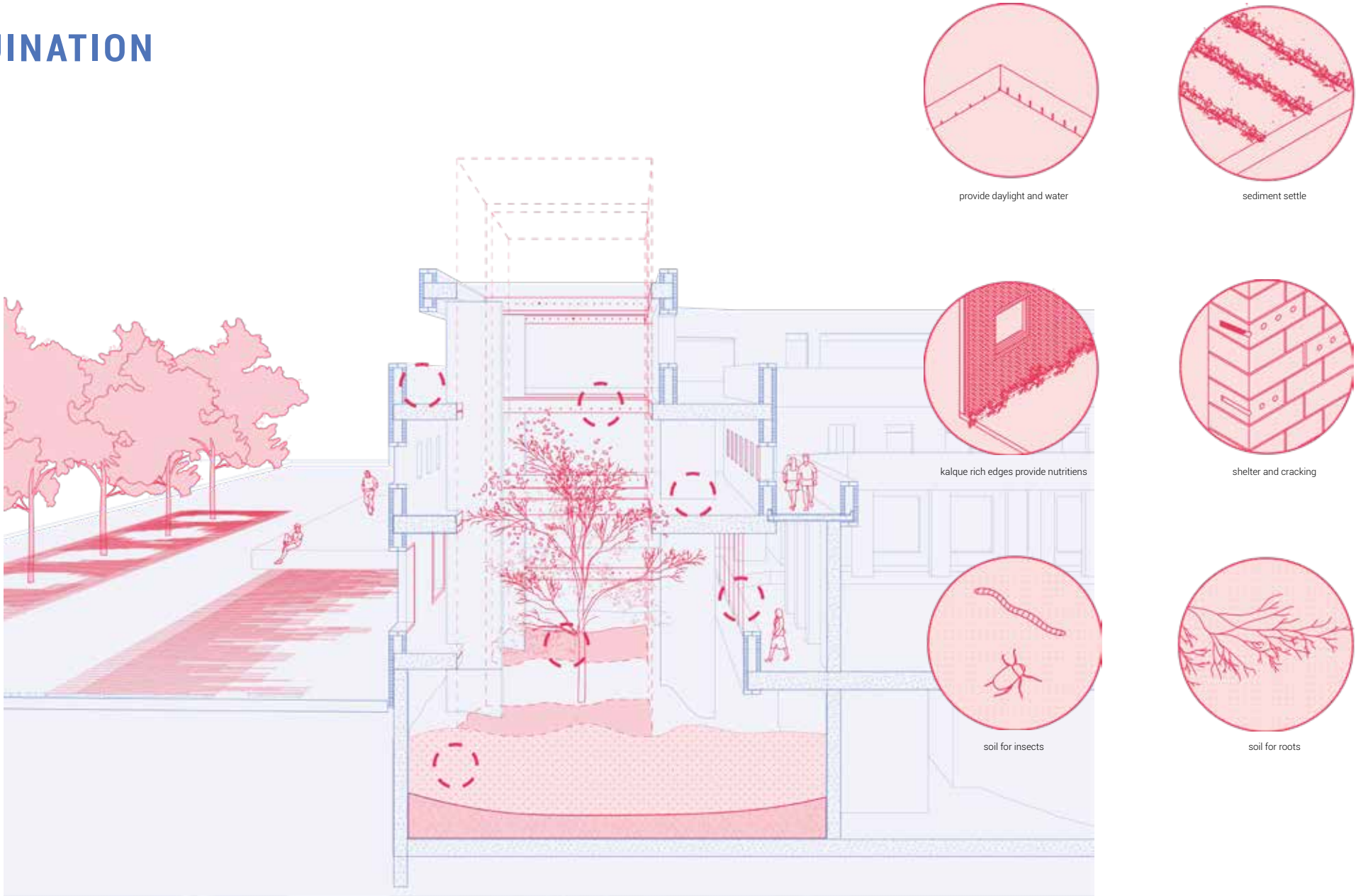
soil for insects



soil for roots

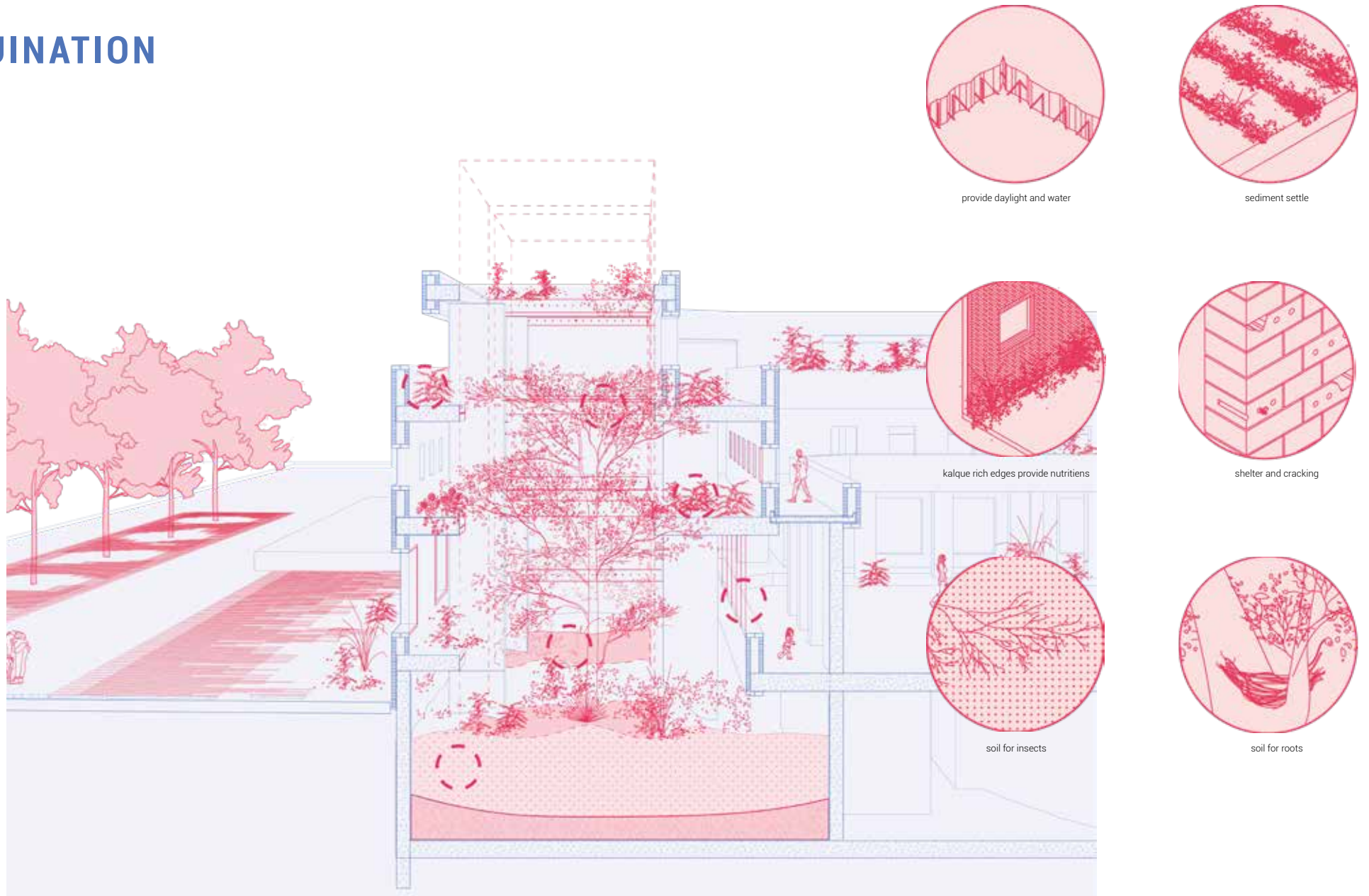
architectural interventions

RUINATION



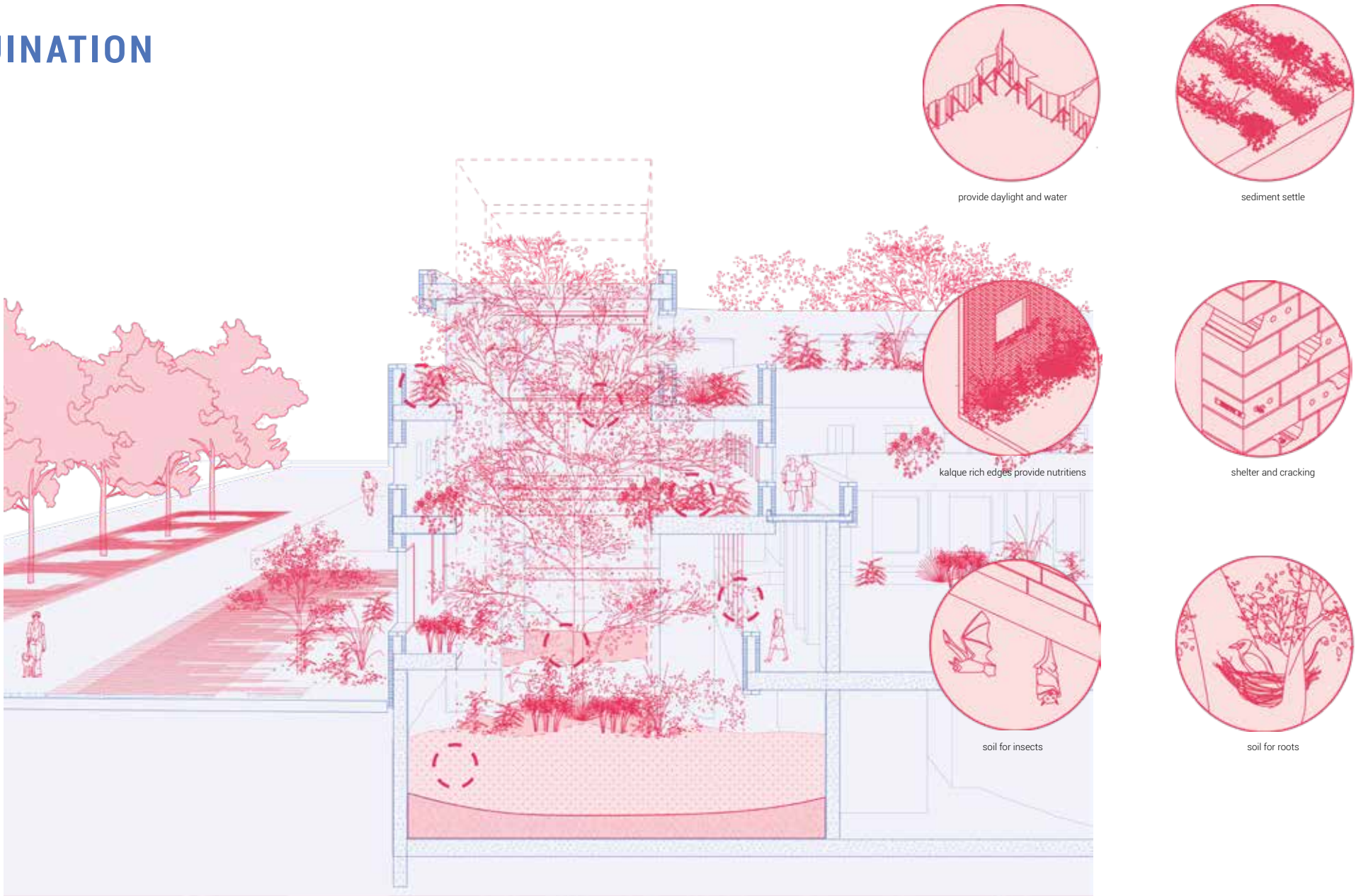
2 years

RUINATION



10 years

RUINATION



40 years





PLATFORMS

PLATFORMS



PLATFORMS



PLATFORMS



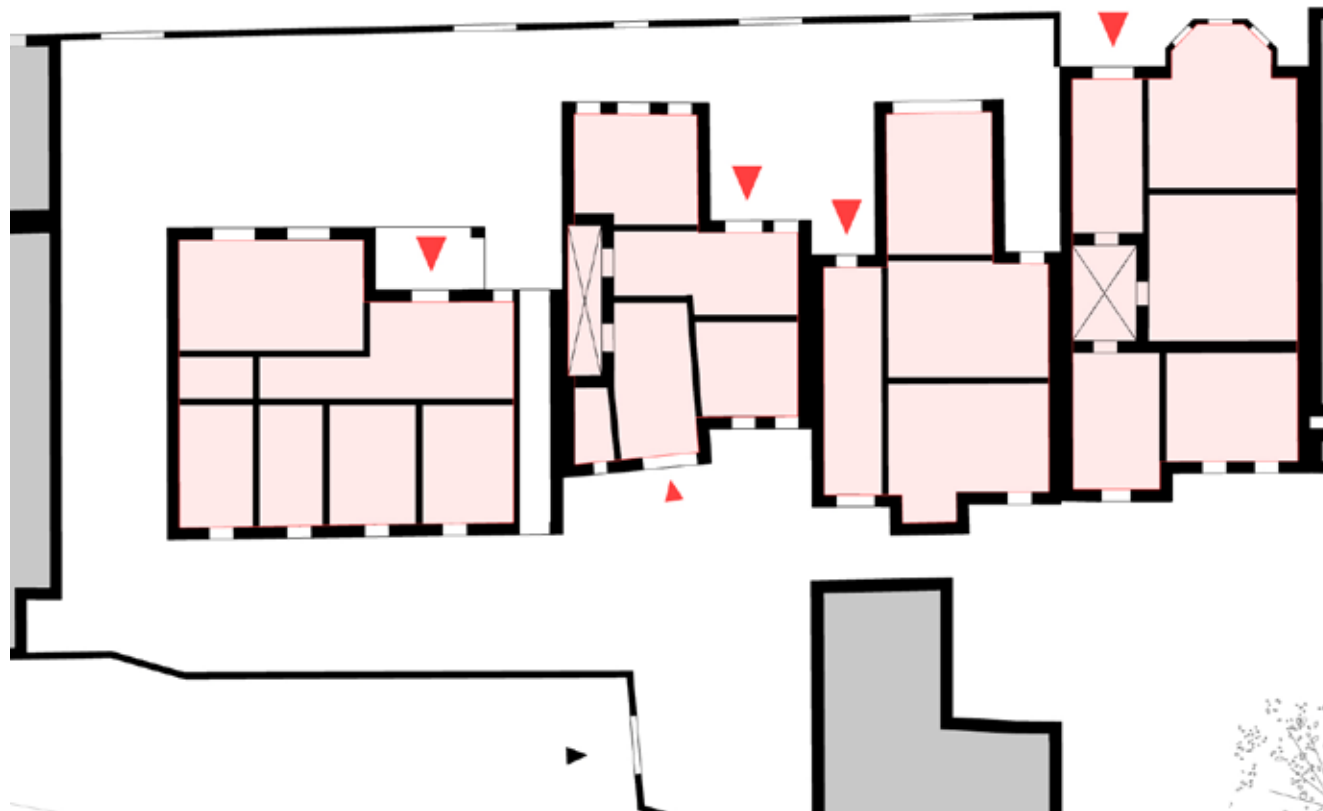




PLATFORMS

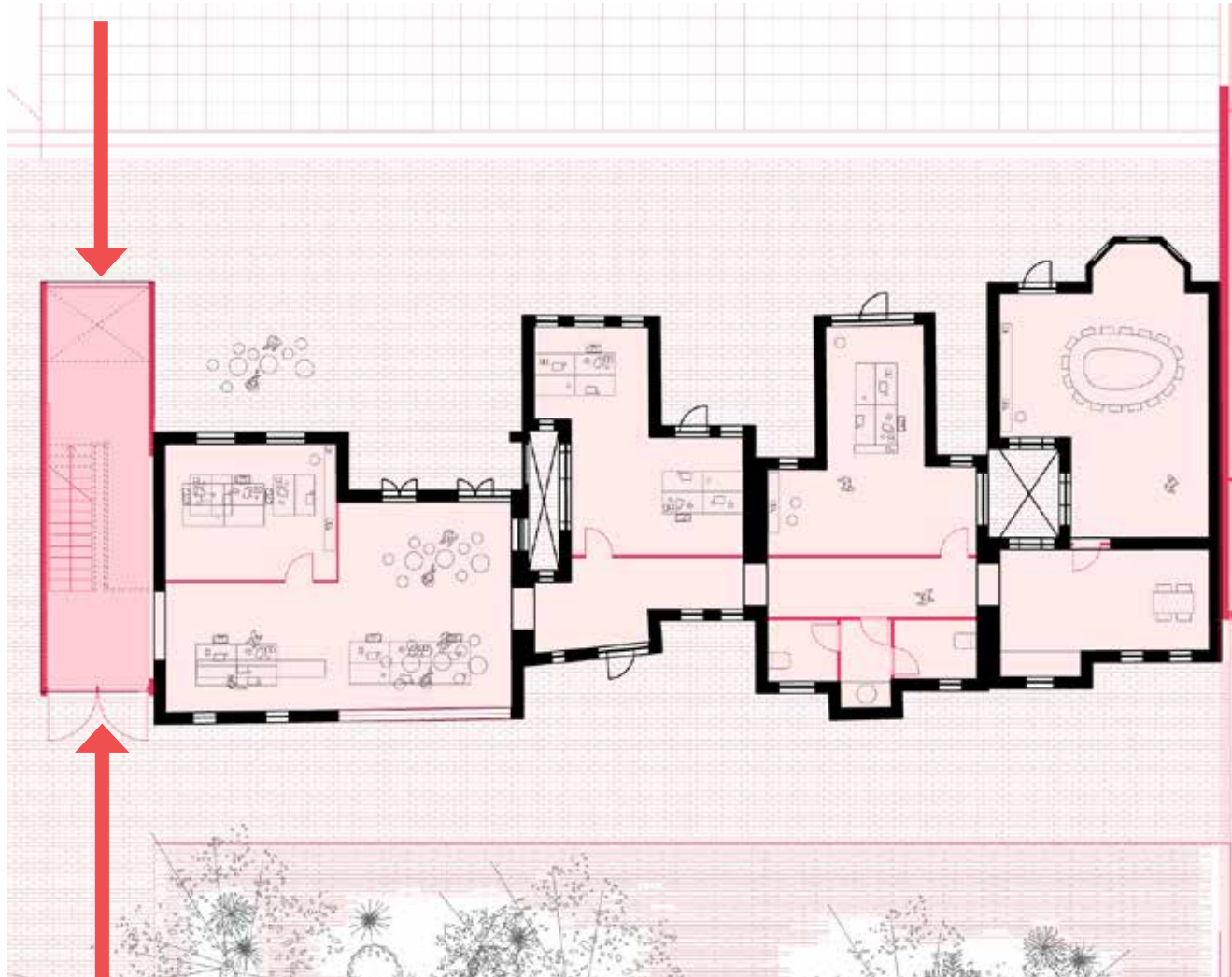


PLATFORMS

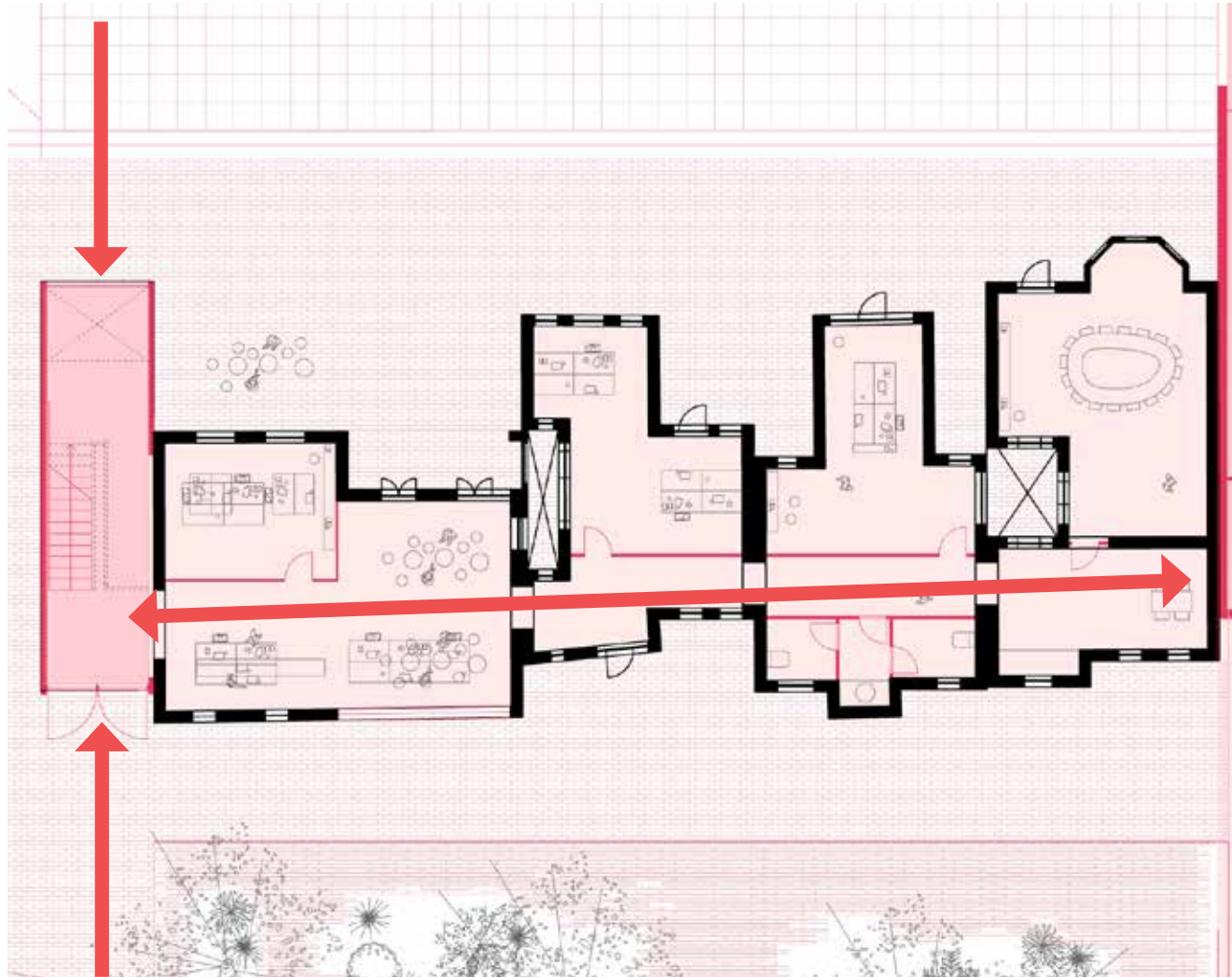


current situation

PLATFORMS



new situation



new situation

PLATEAUS

PLATEAUS

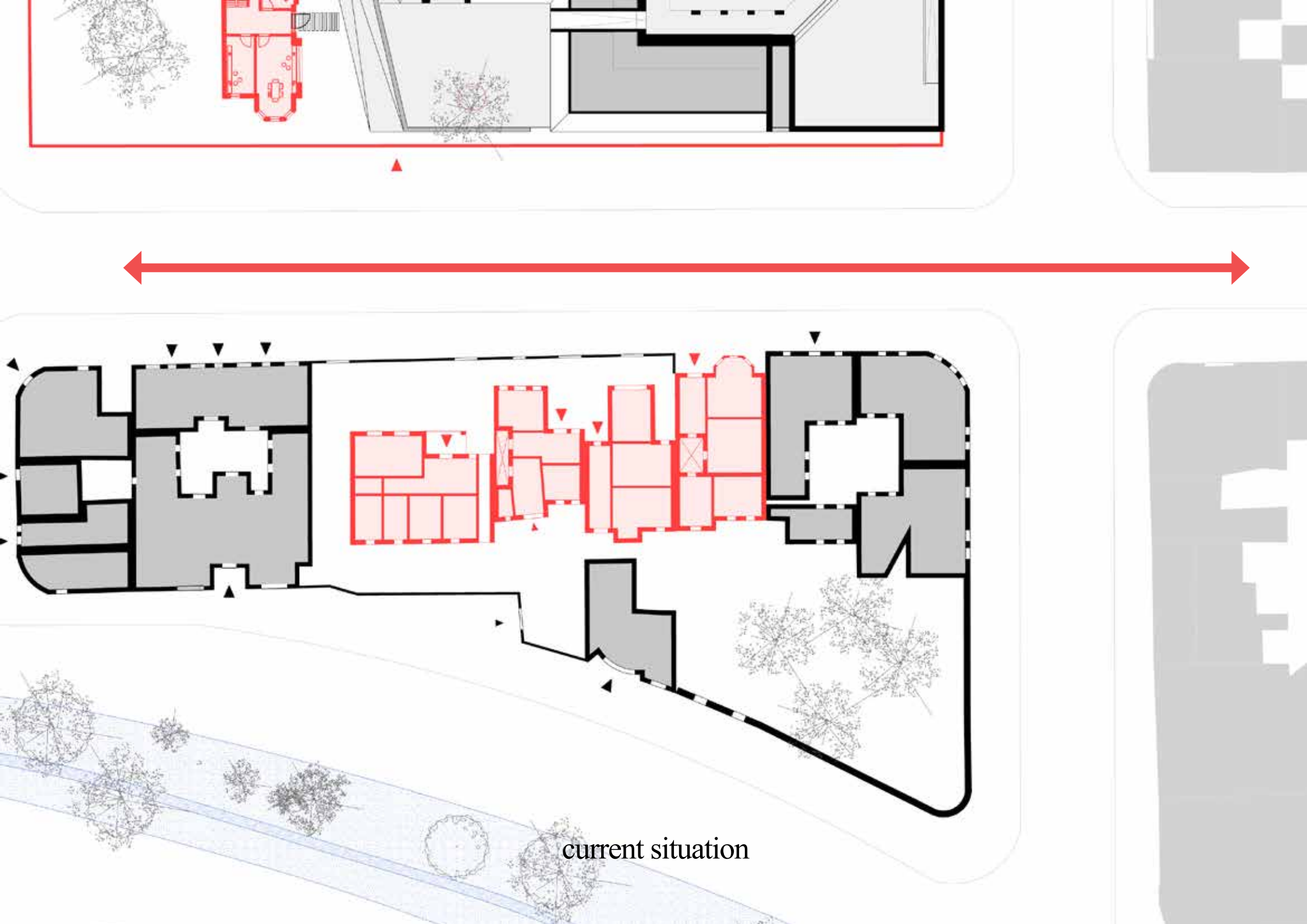


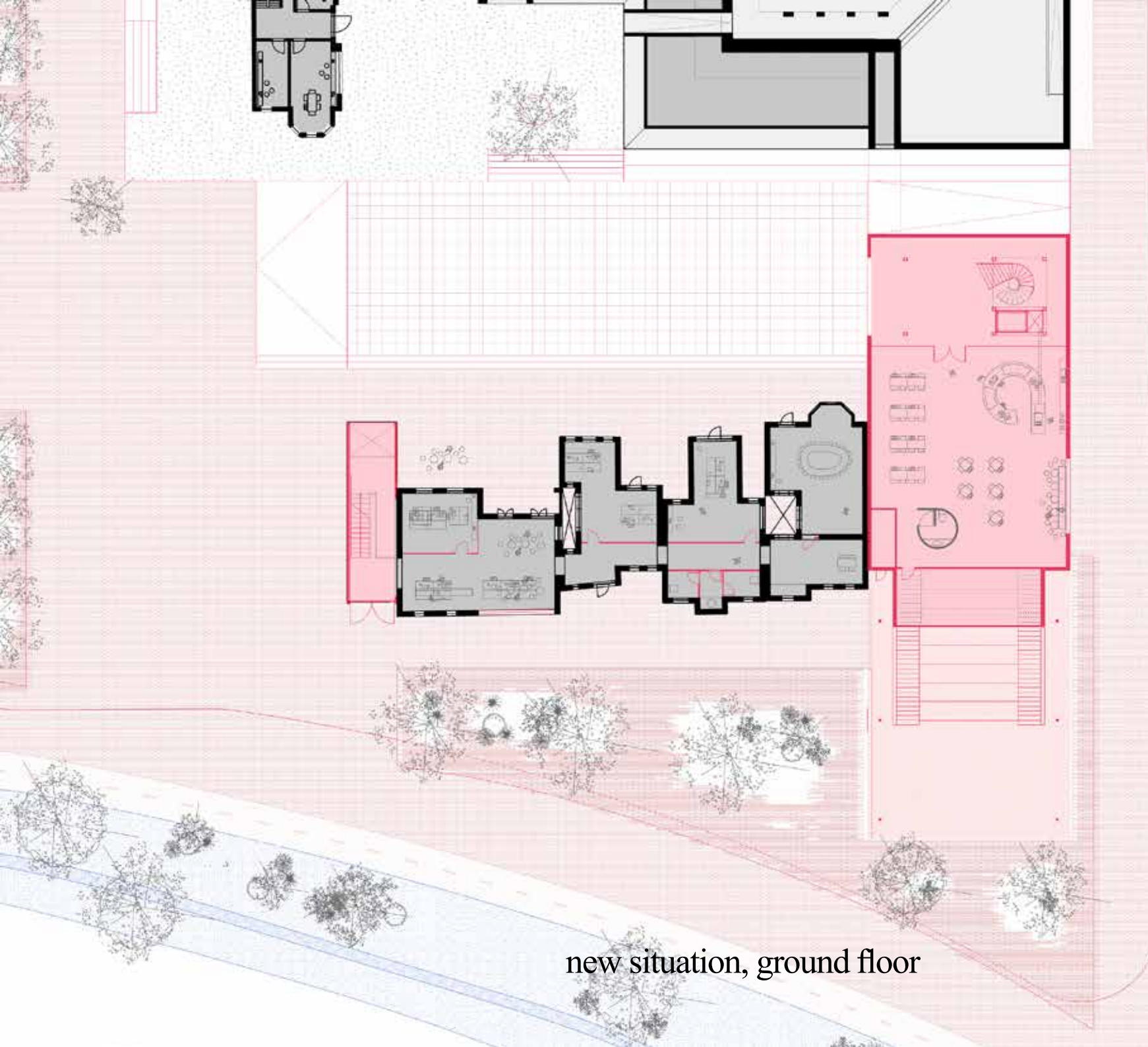
PLATEAUS



PLATEAUS



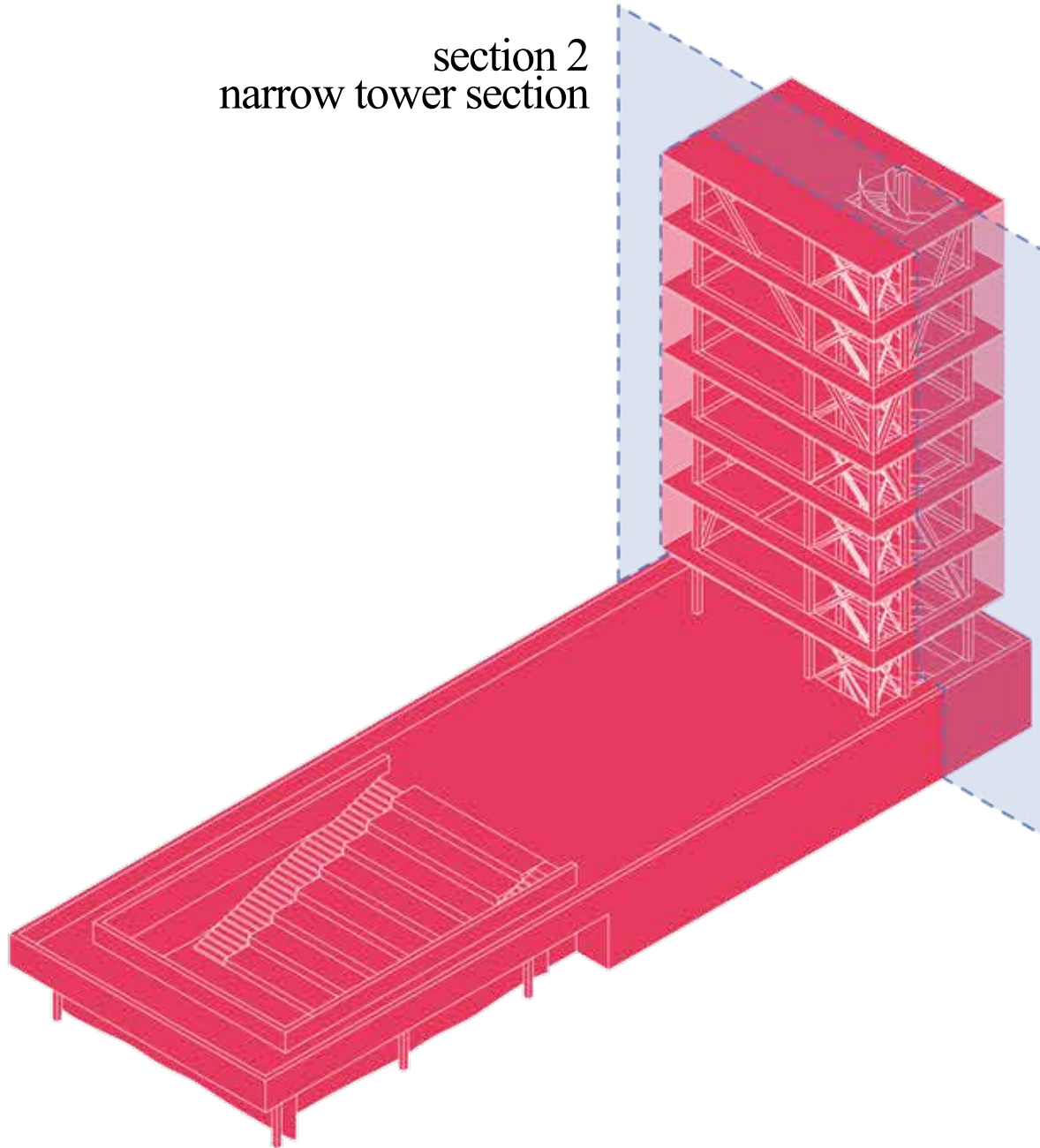




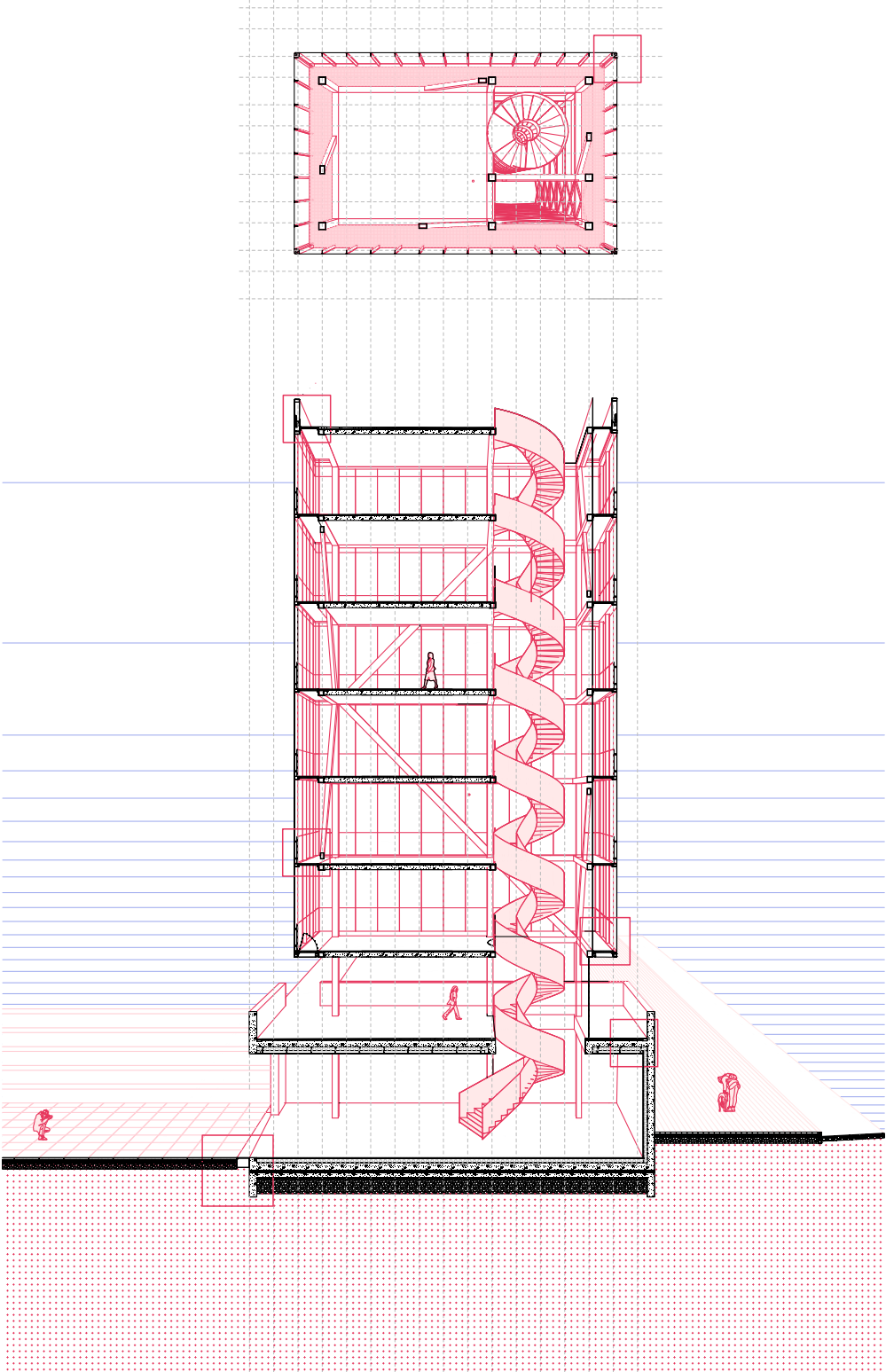
new situation, ground floor

PLATEAUS

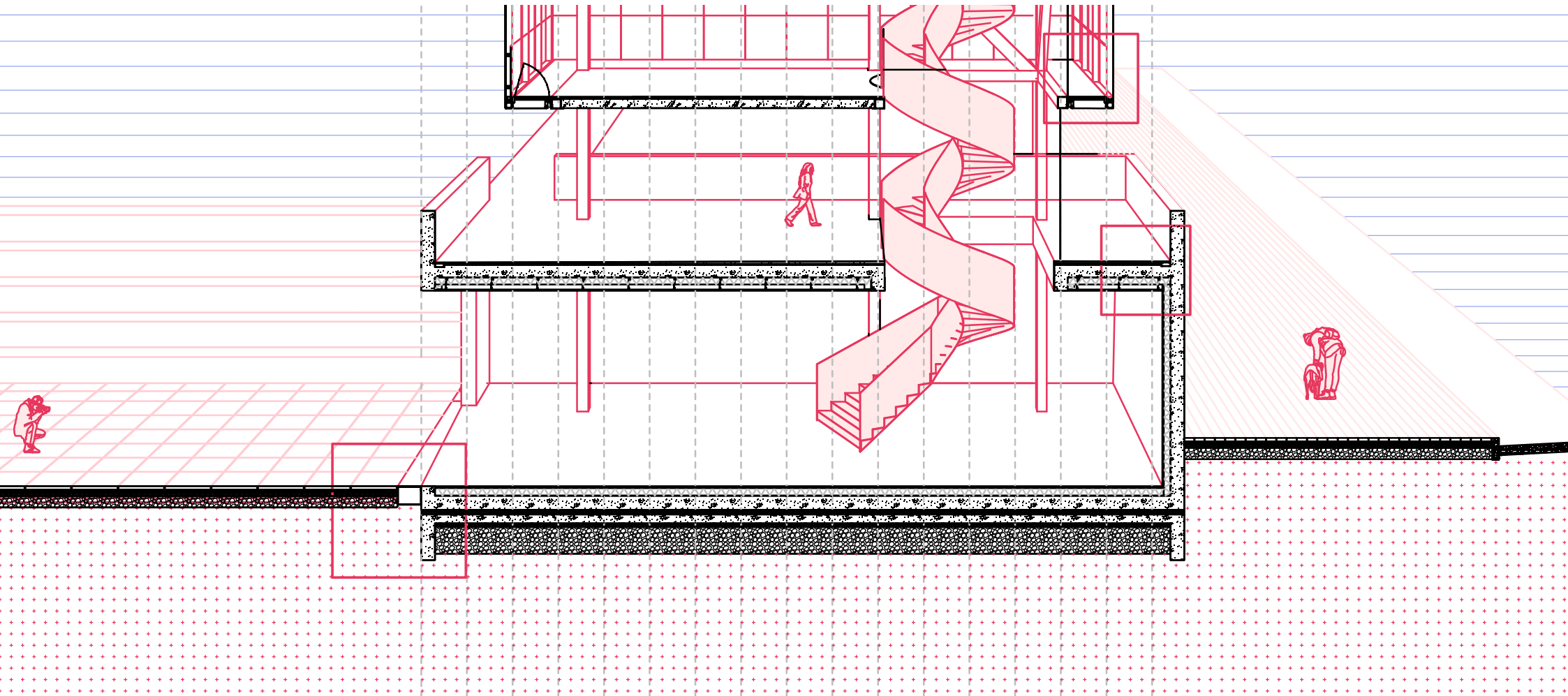
section 2
narrow tower section



PLATEAUS



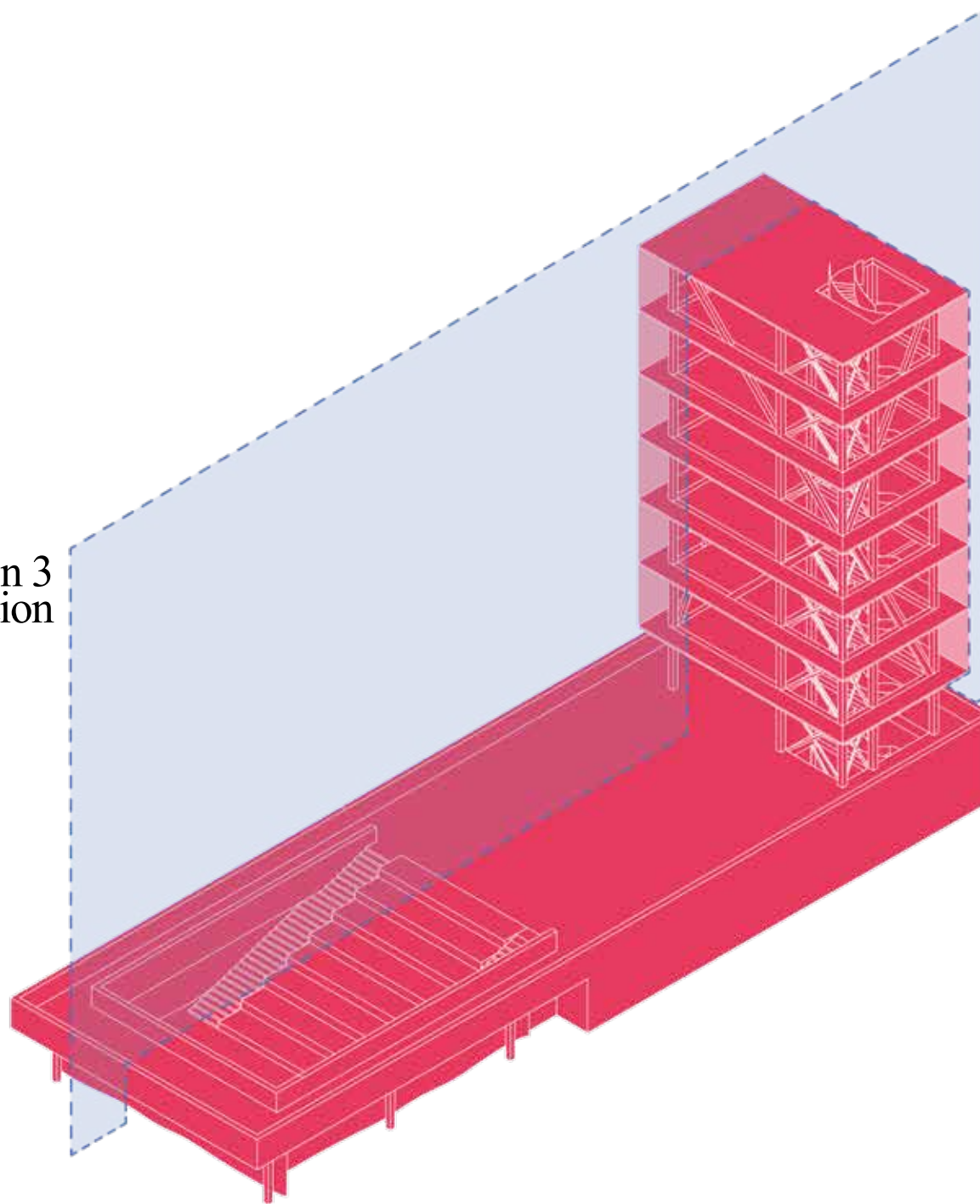
PLATEAUS



building blocking street and plaza

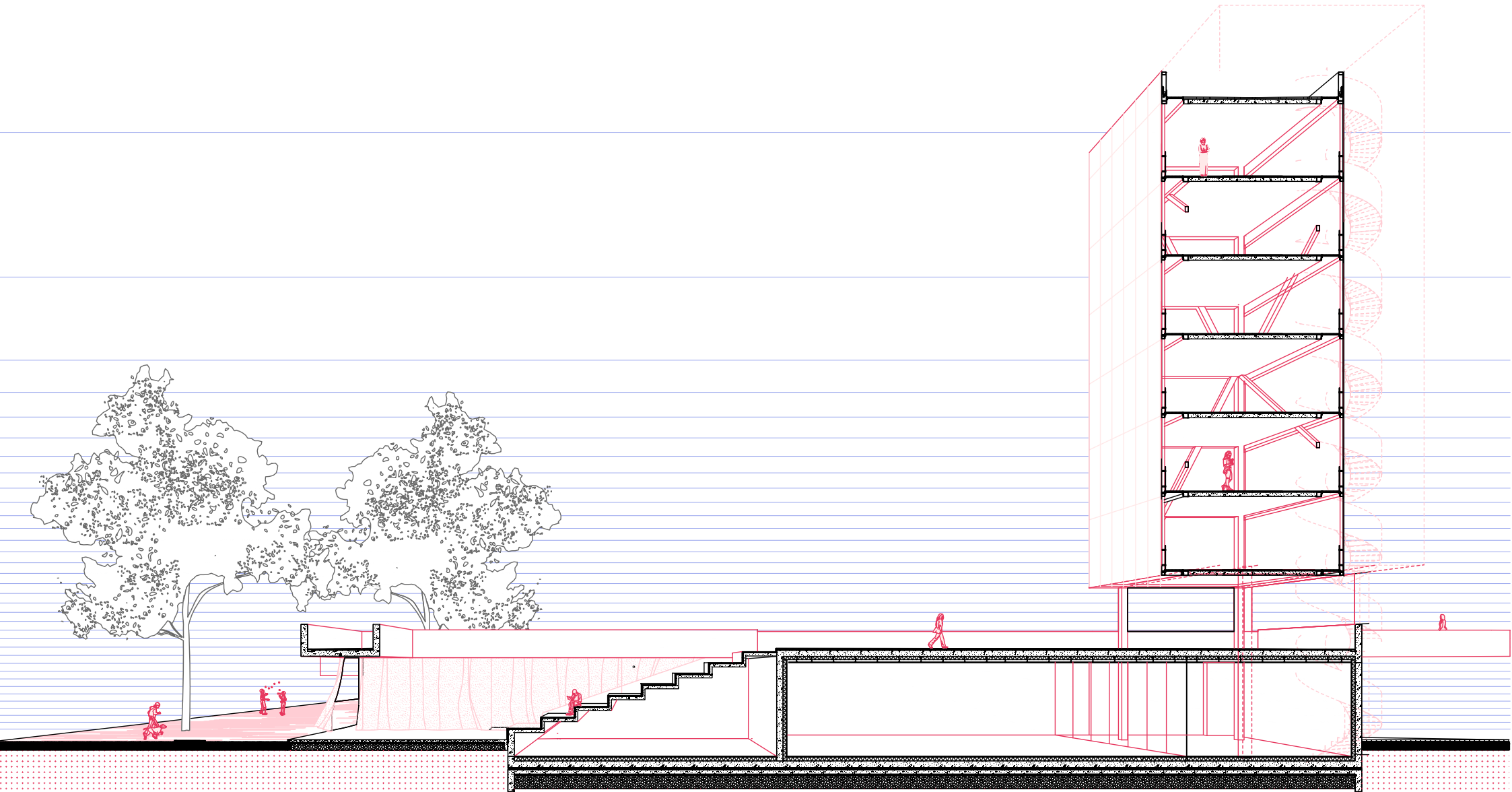
PLATEAUS

section 3
long tower section

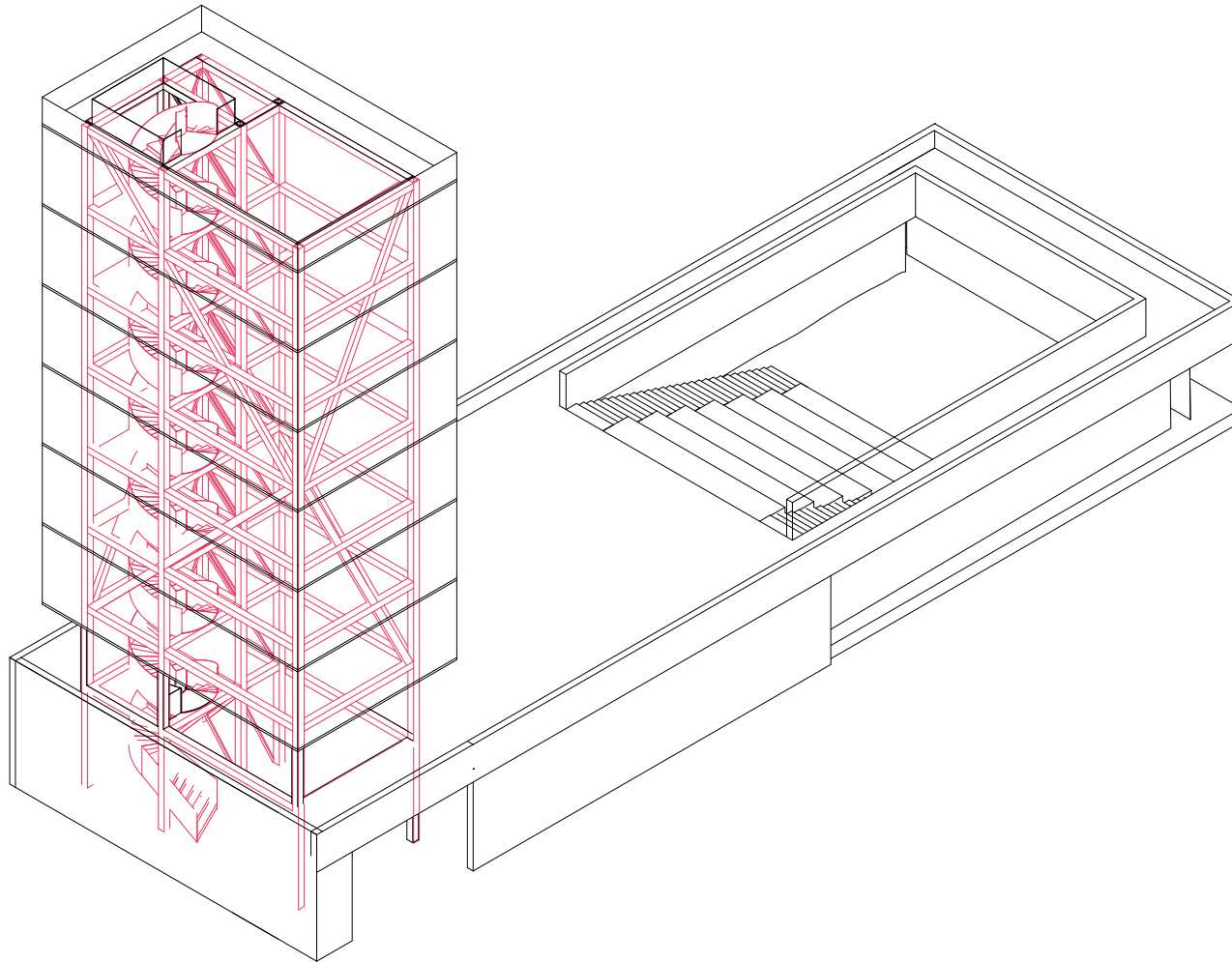


building providing connection river and ruin

PLATEAUS

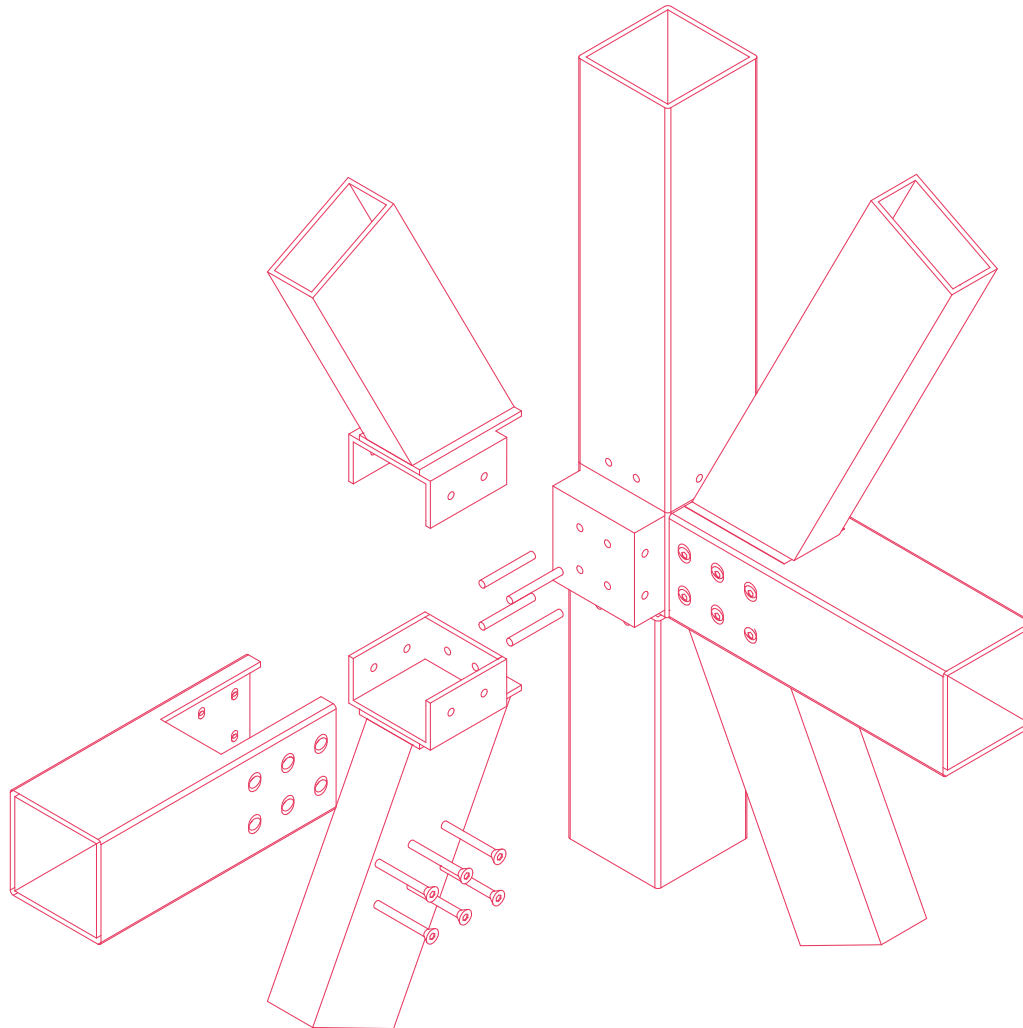


PLATEAUS



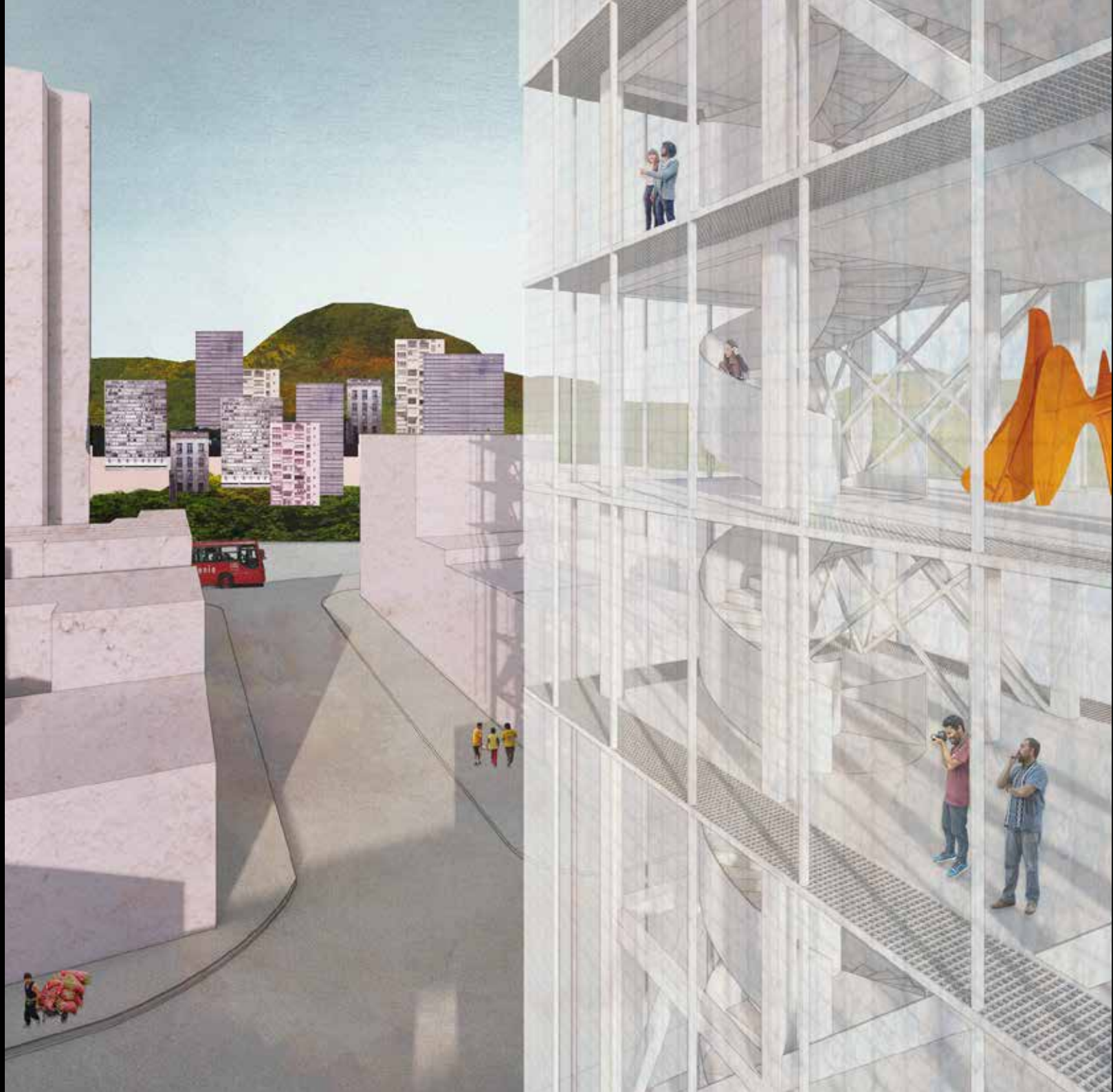
lightweight floating structure over concrete

PLATEAUS



minimal details

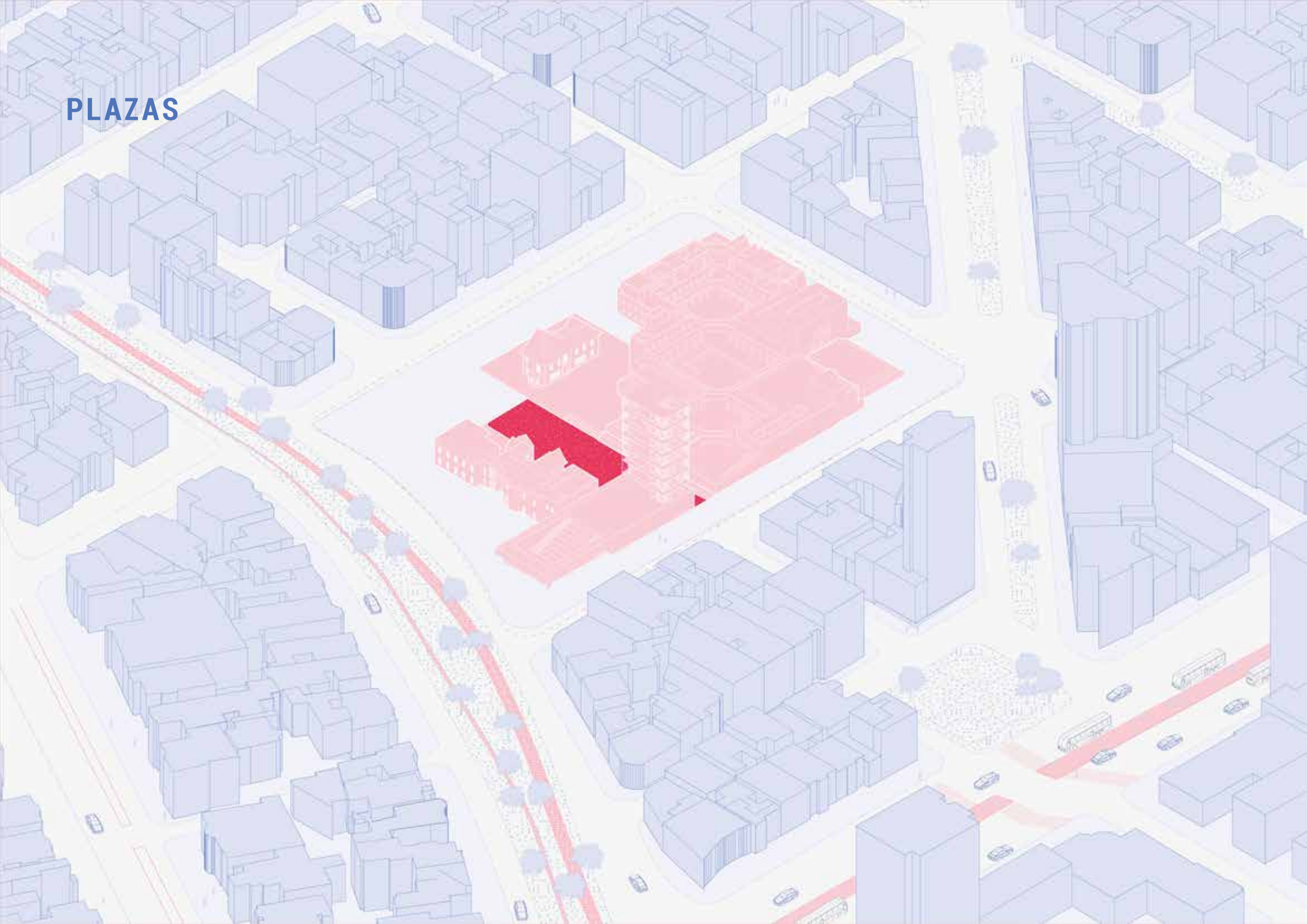




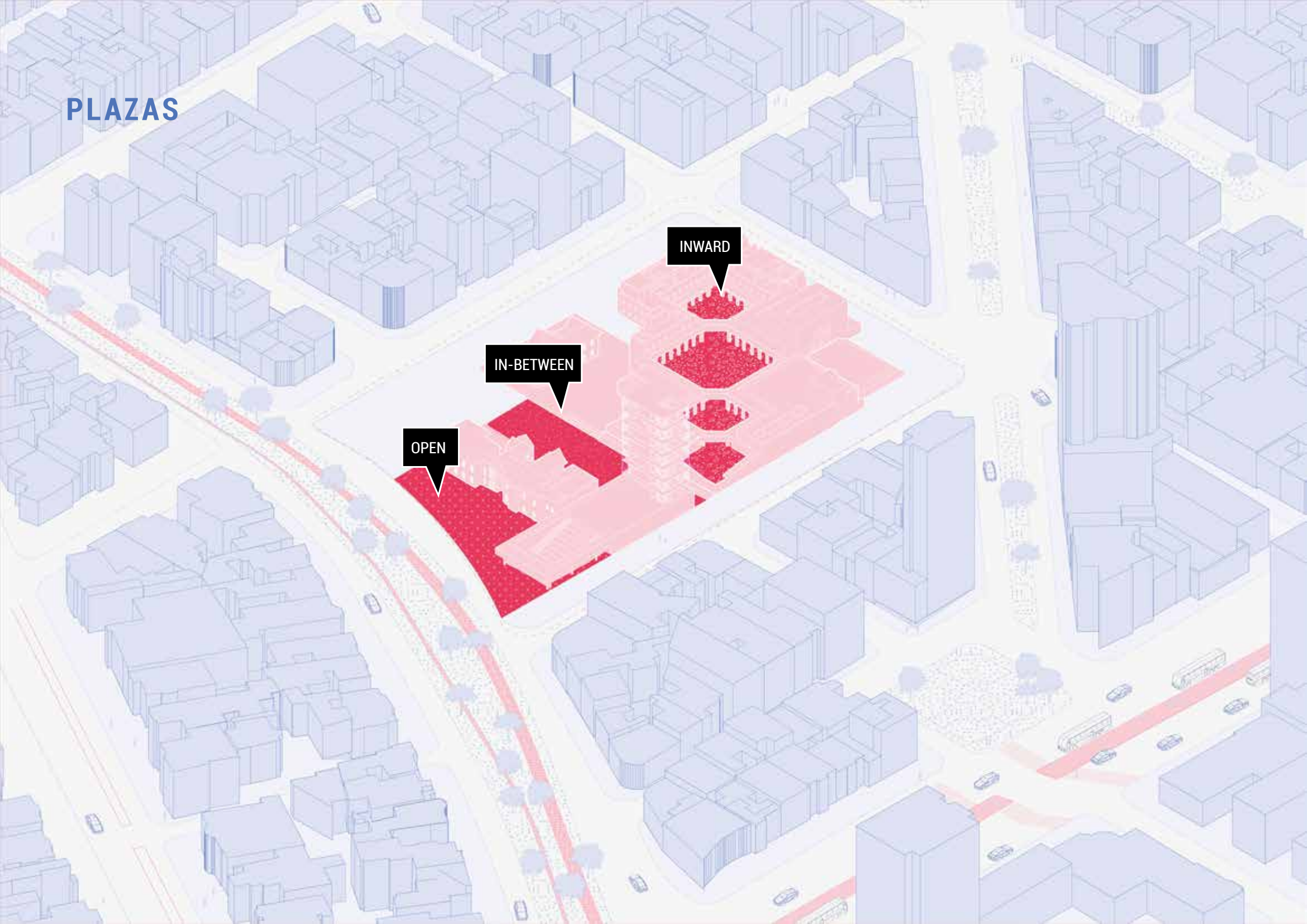


PLAZAS

PLAZAS



PLAZAS



INWARD

IN-BETWEEN

OPEN

PLAZAS





















An aerial, isometric architectural rendering of a modern building complex. The building features a central courtyard with a large tree and a paved area. The building's design includes multiple levels, terraces, and a central atrium. A person in a red shirt and a patterned skirt stands in the foreground, looking towards the building. The entire scene is overlaid with a semi-transparent red filter.

THANK YOU :)