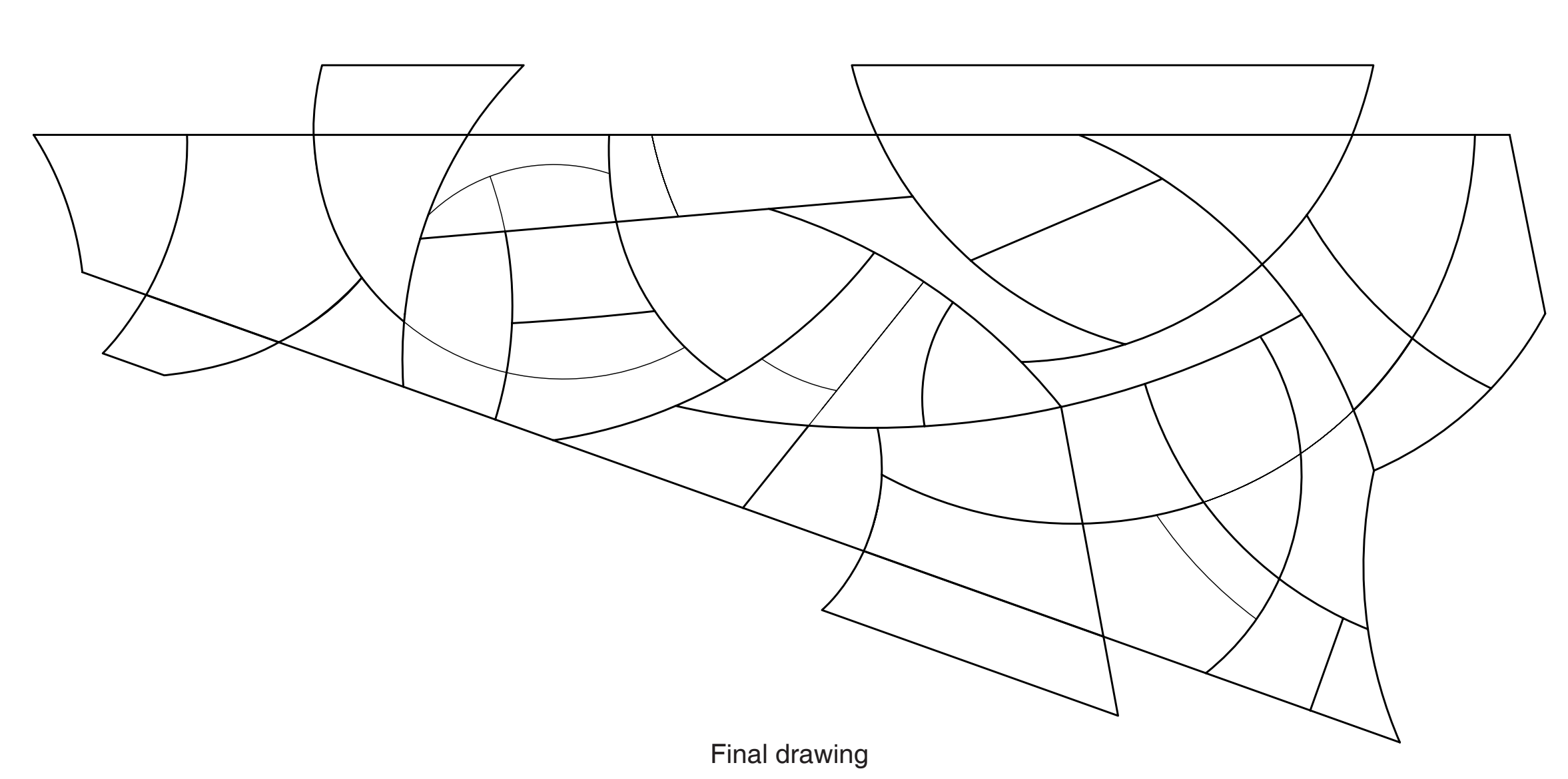


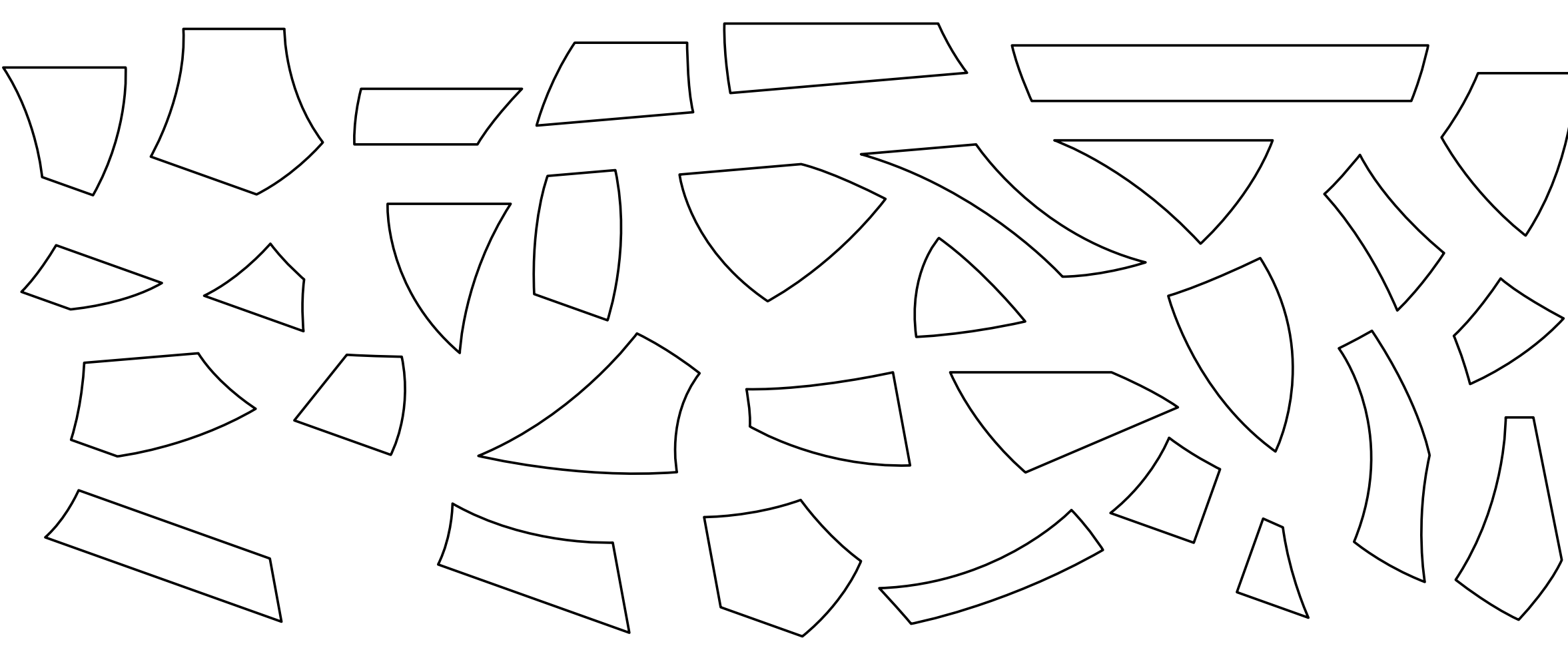
RAVE SPACES

TU Delft
Public Building - "Music Marvel"
Graduation studio 2021-2022
P5 poster presentation

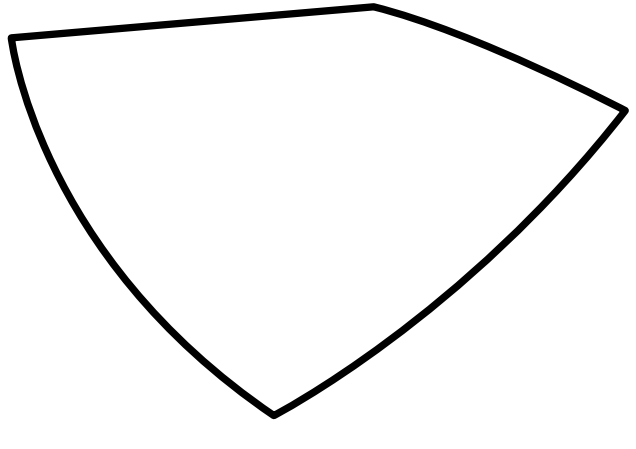
Justin Errami
4591674



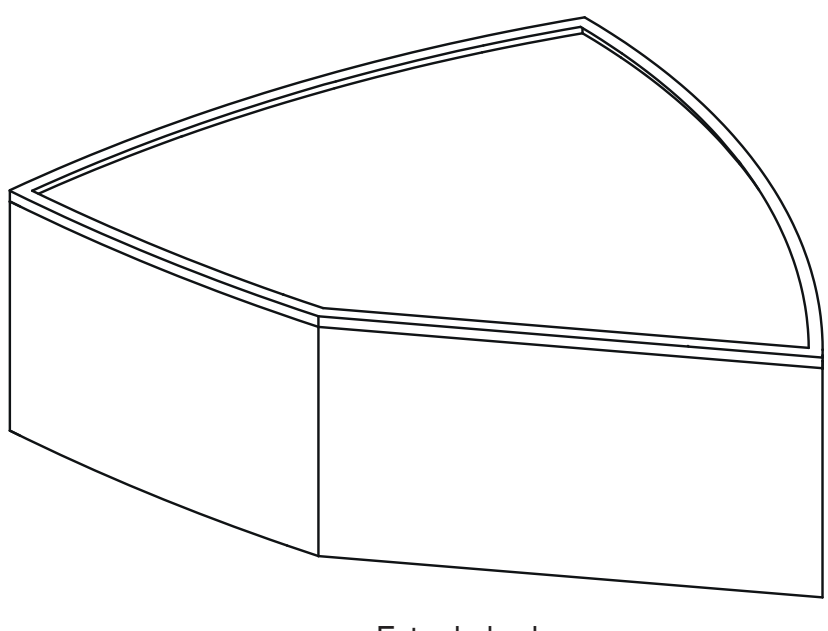
Final drawing



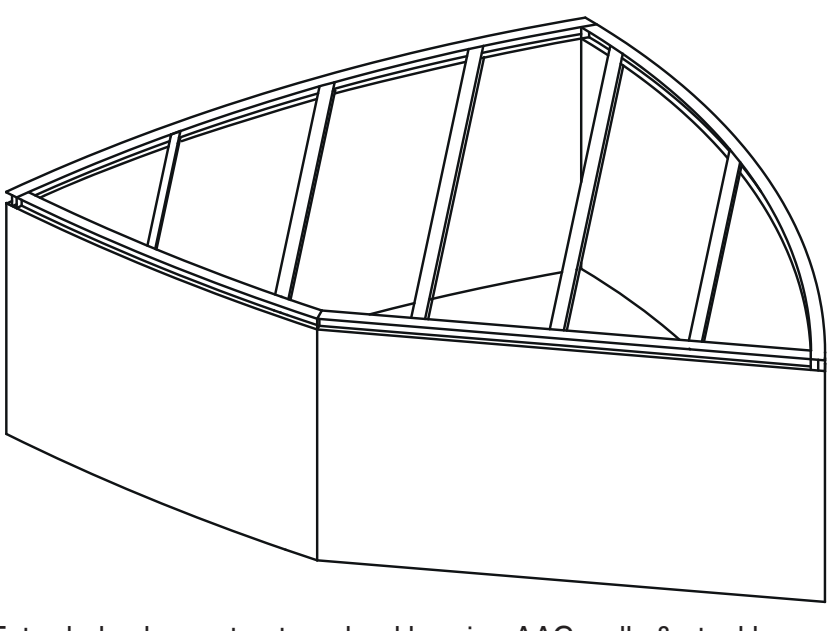
Collection of shapes representing spaces in plan-view



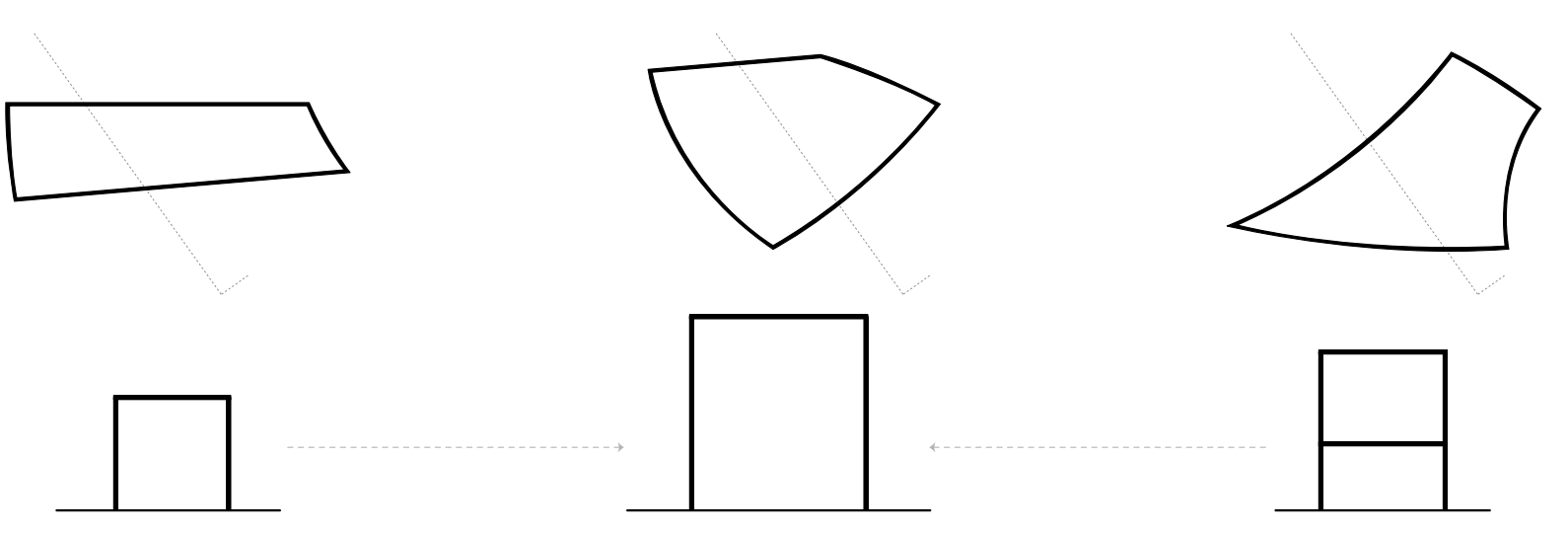
Found shape



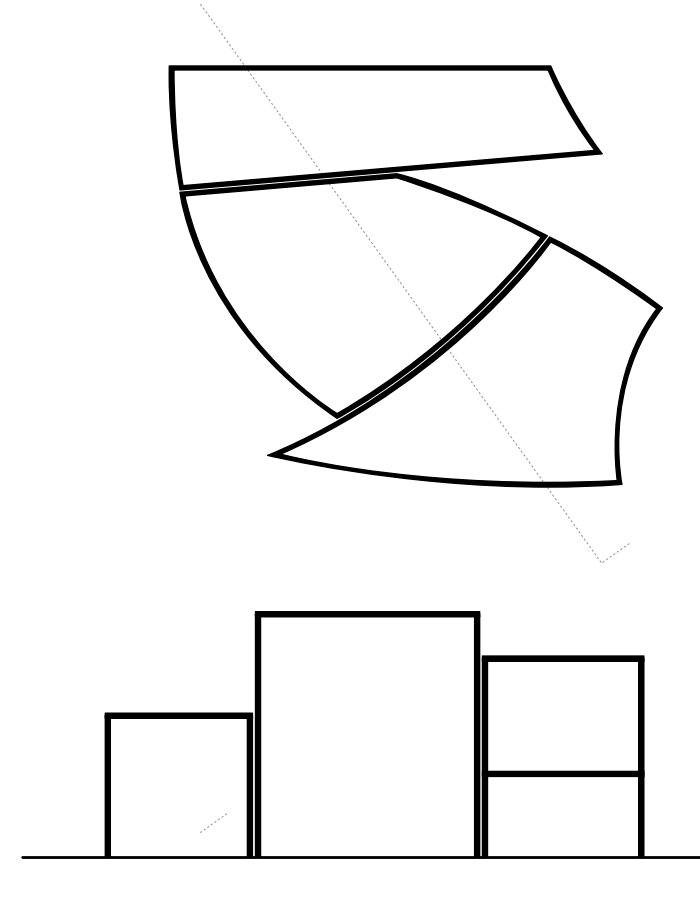
Extruded volume



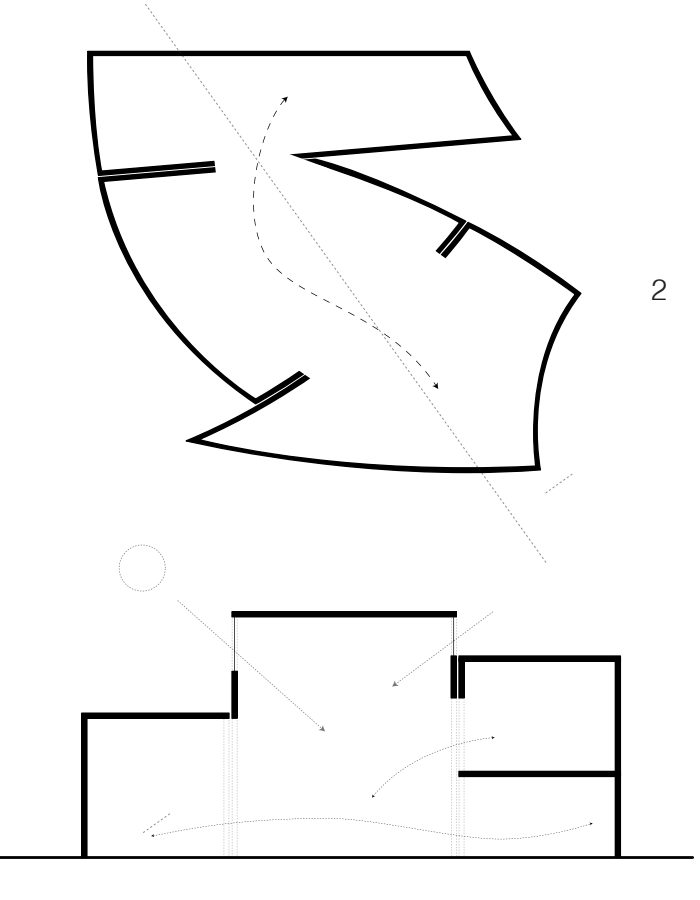
Extruded volume structure: load bearing AAC walls & steel beams



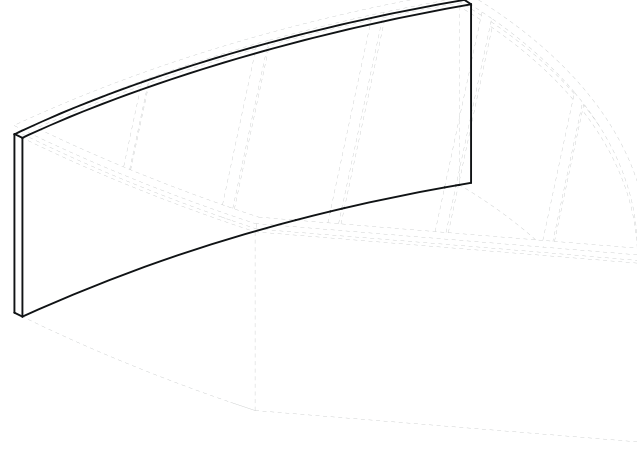
Three single volumes as independent entities



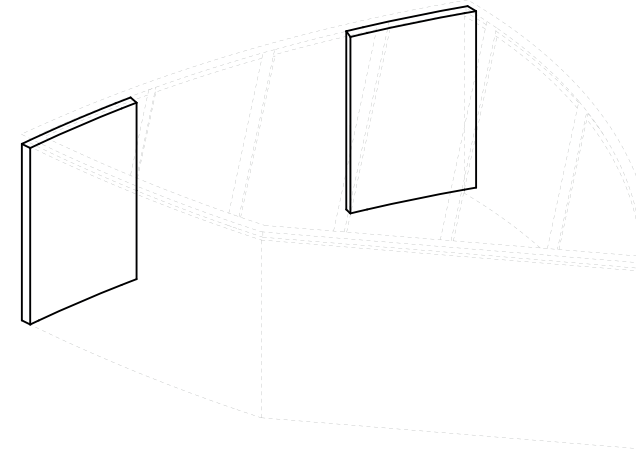
Combining volumes



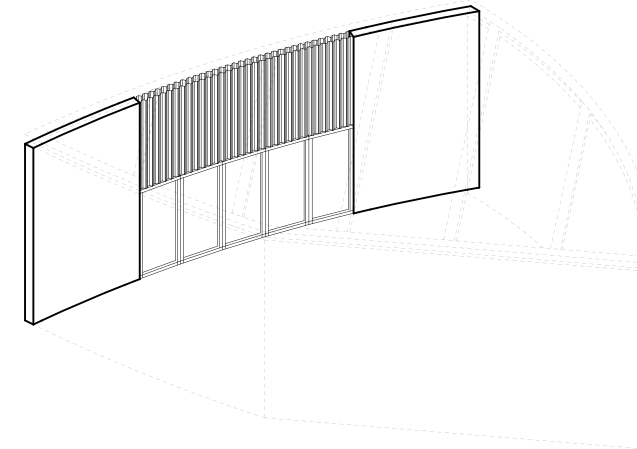
Opening up volumes for spatial relations between volumes



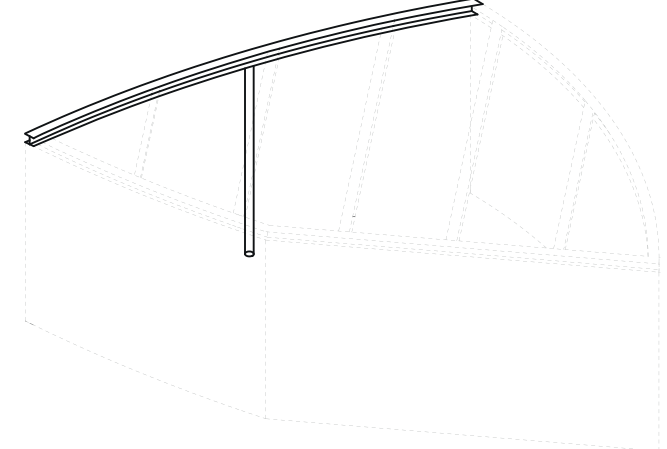
Closed masonry wall



Opening in wall by splitting the loadbearing wall



Opening can be filled with closed elements and window frames



Open plane making space fluid including tube steel column for support

Finding space: drawing -> architecture -> interpreting space



Concrete pavement tiles



Rubble



Steel grates and fences



Wooden frameworks and panels

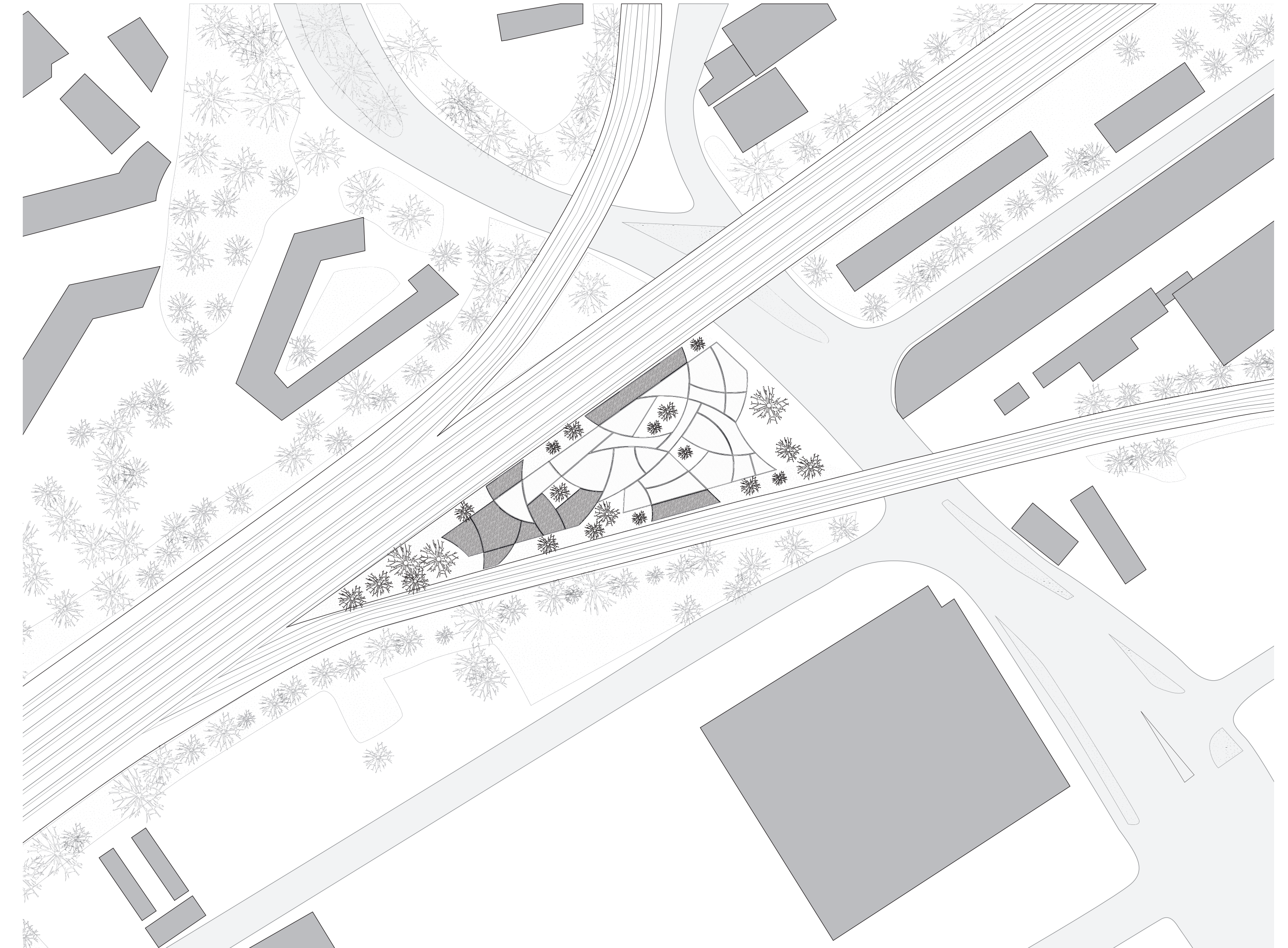


Steel plates

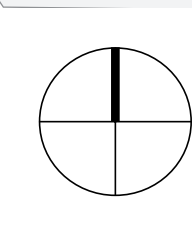
Materiality: structure clad with scrap materials on site



Site plan: Binckhorst, The Hague



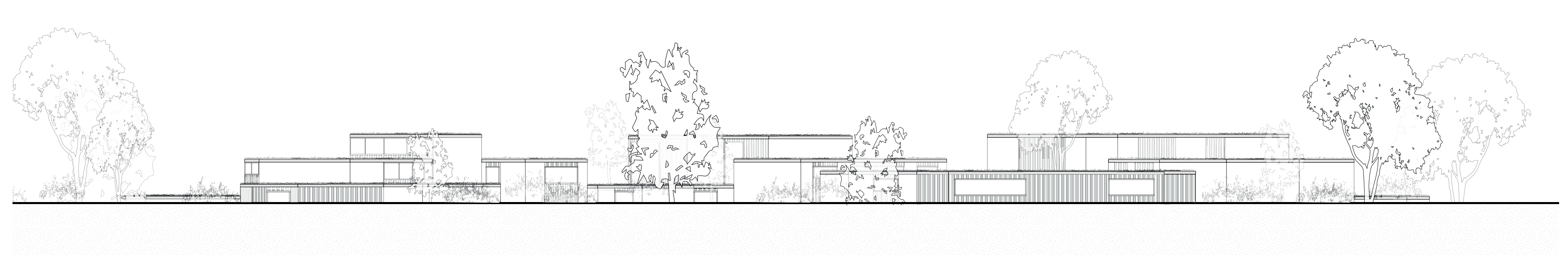
Roof plan 1:1000



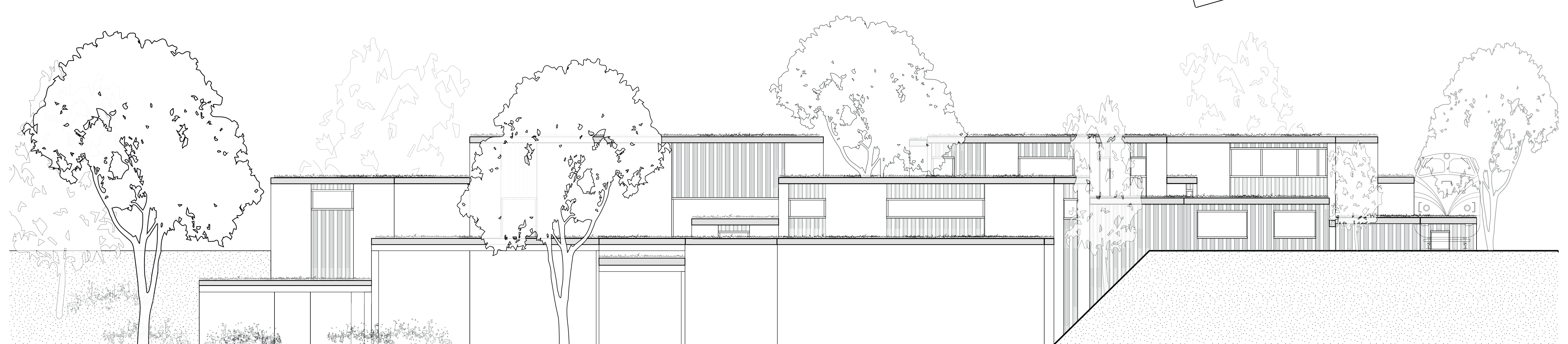
Section 1:200



Section 1:100



South elevation 1:200



North-east elevation 1:100

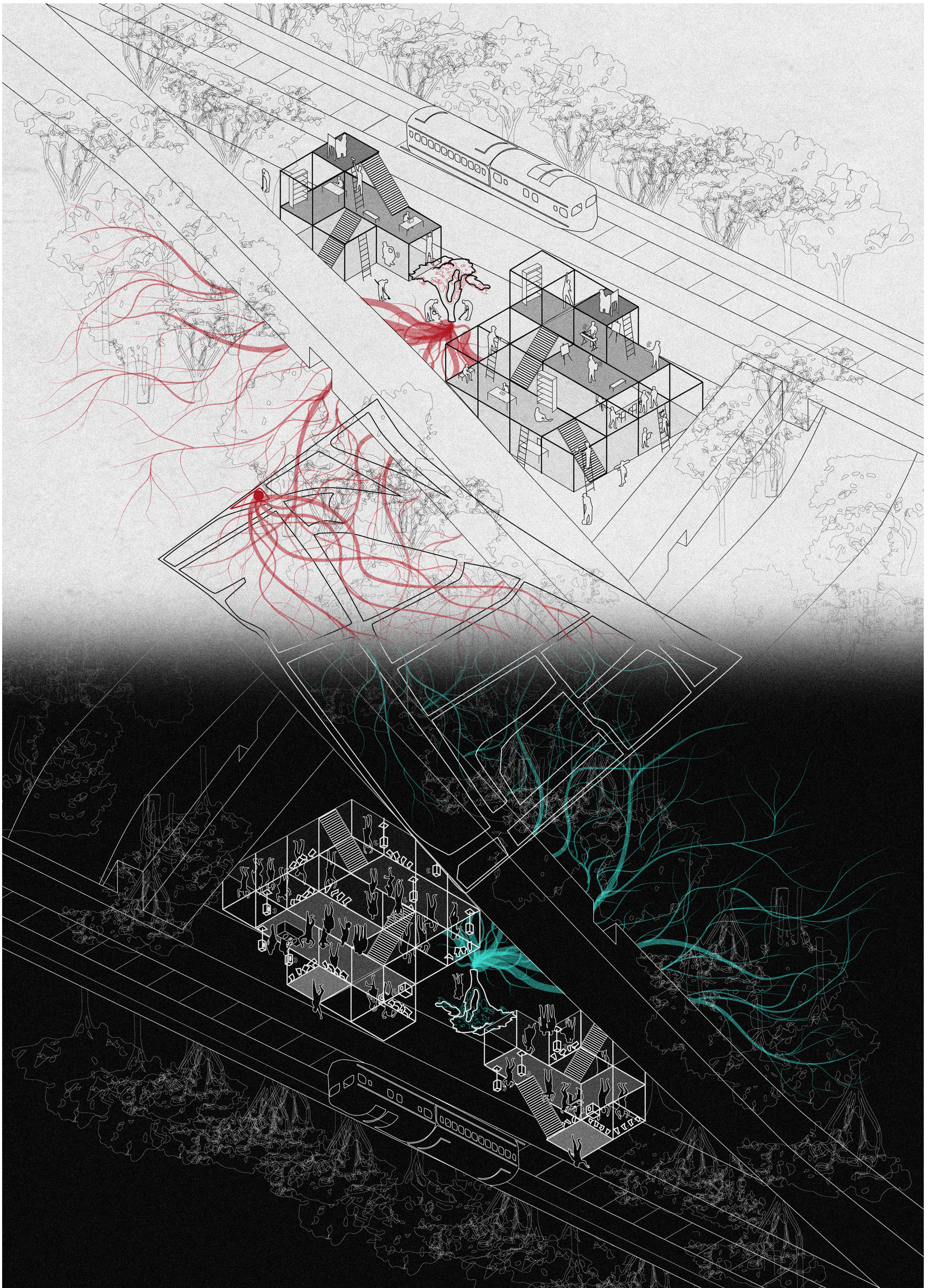


1st floor plan 1:200

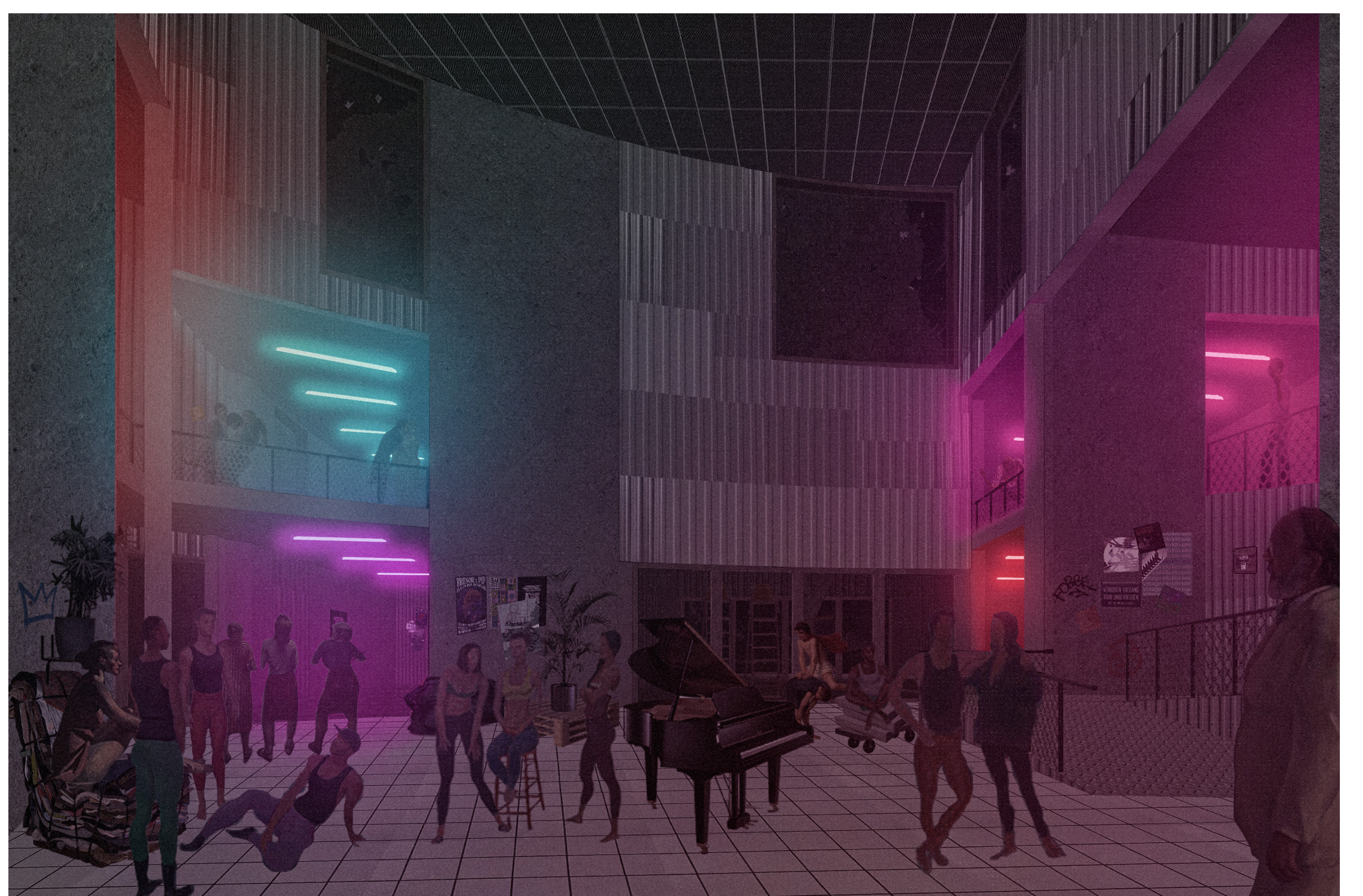
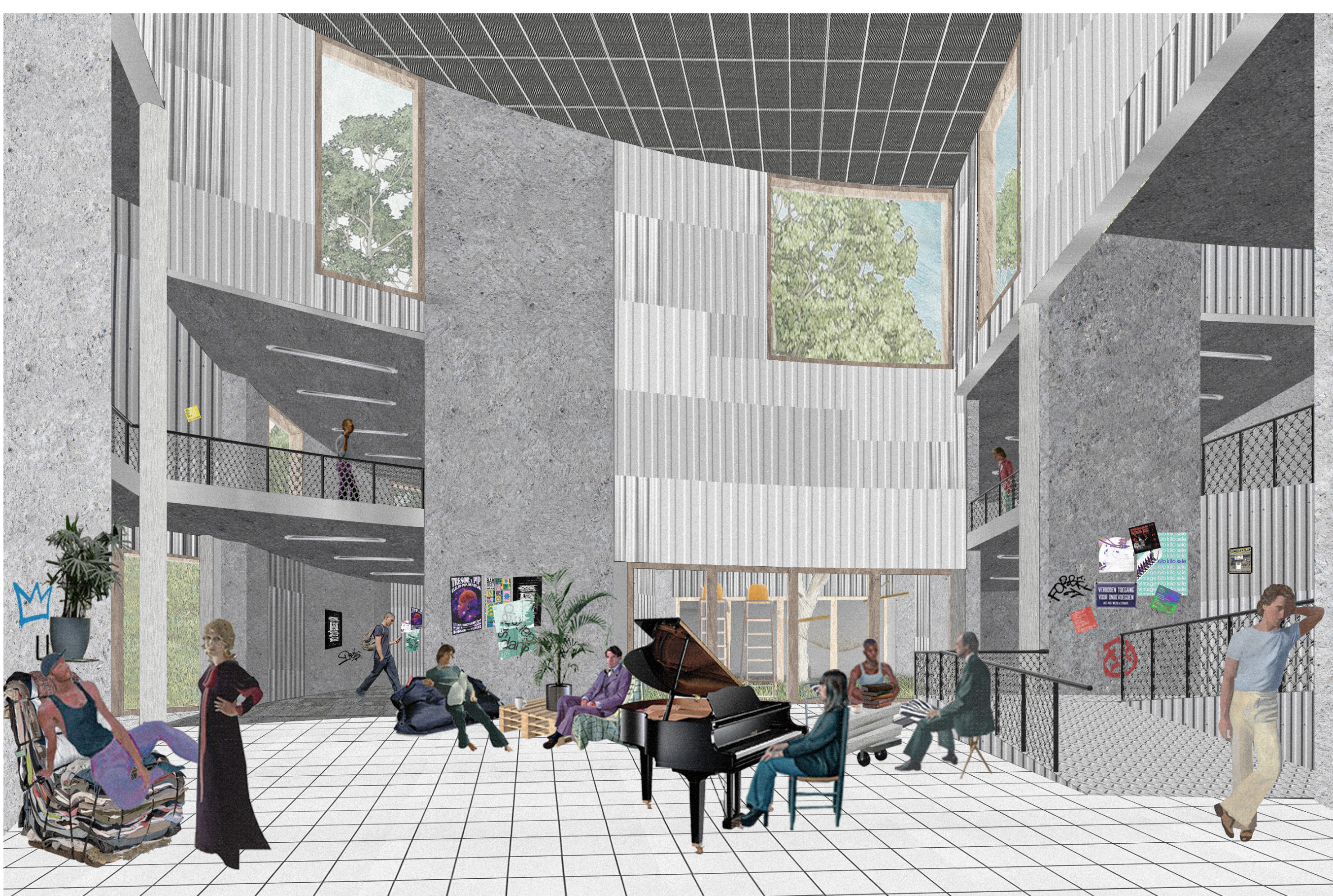
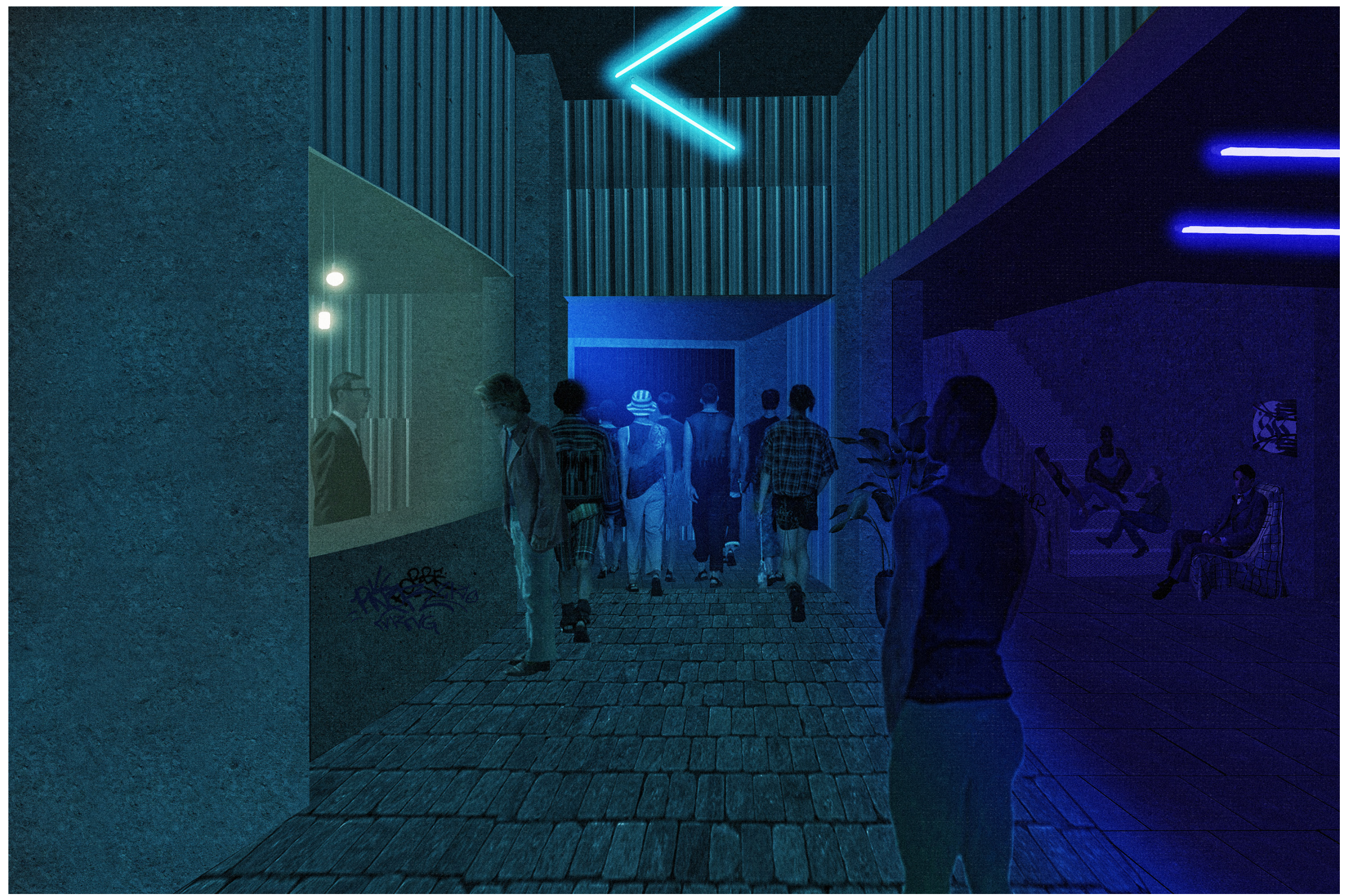
- | | | |
|---------------------|-------------------------|--|
| 1: Entrance hall | 9: Bar | 17: Club / Lecture hall balcony |
| 2: Restaurant | 10: Toilets | 18: 1st floor circulation / social space |
| 3: Lounge | 11: Club / Atelier | 19: Offices |
| 4: Courtyard garden | 12: Storage | 20: Artist lounge |
| 5: Kitchen | 13: Club / Lecture Hall | 21: Music recording space |
| 6: Technical space | 14: Tribune | |
| 7: Cloakroom | 15: Staff lounge | |
| 8: Social hall | 16: Staff entrance hall | |



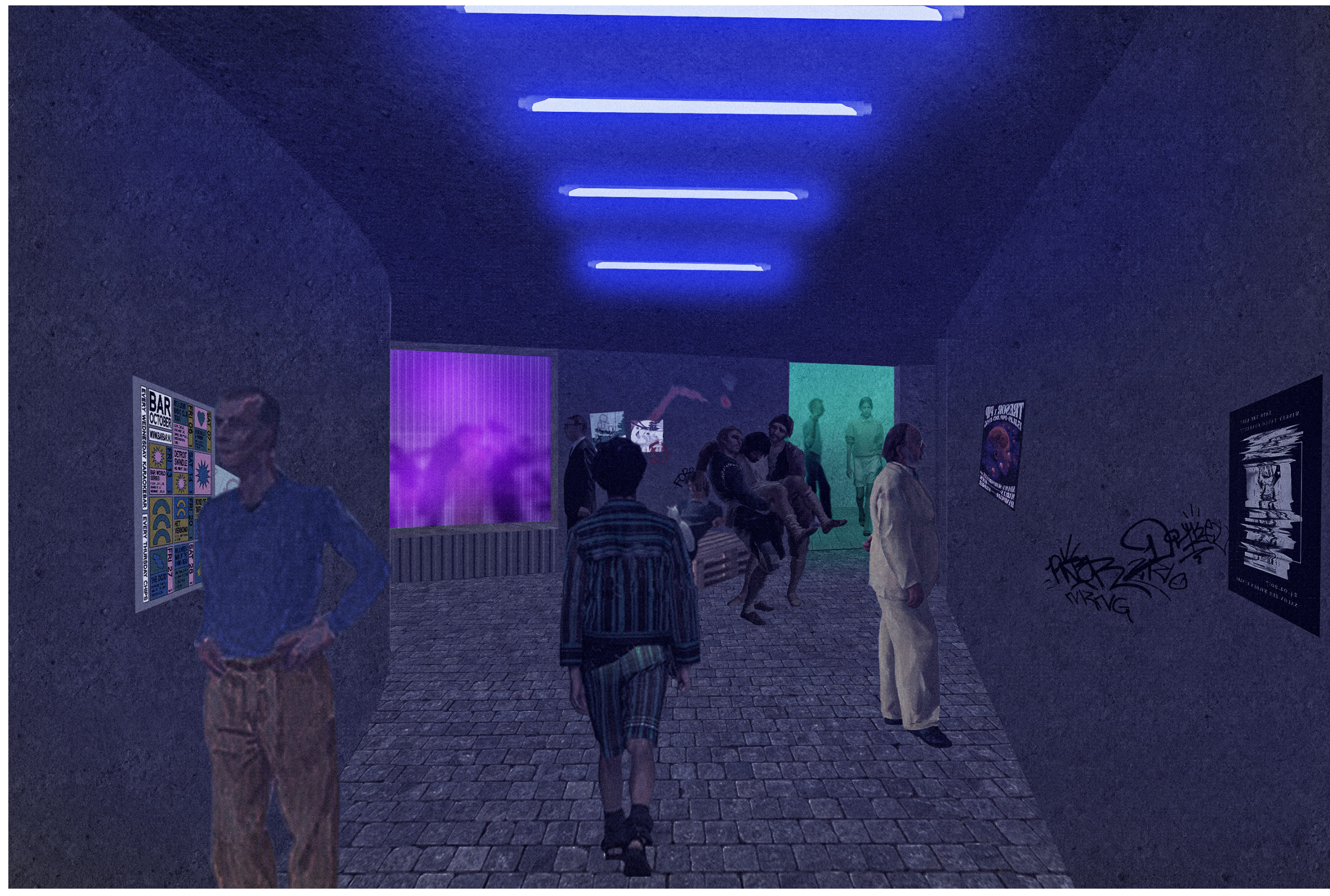
Groundfloor plan 1:200



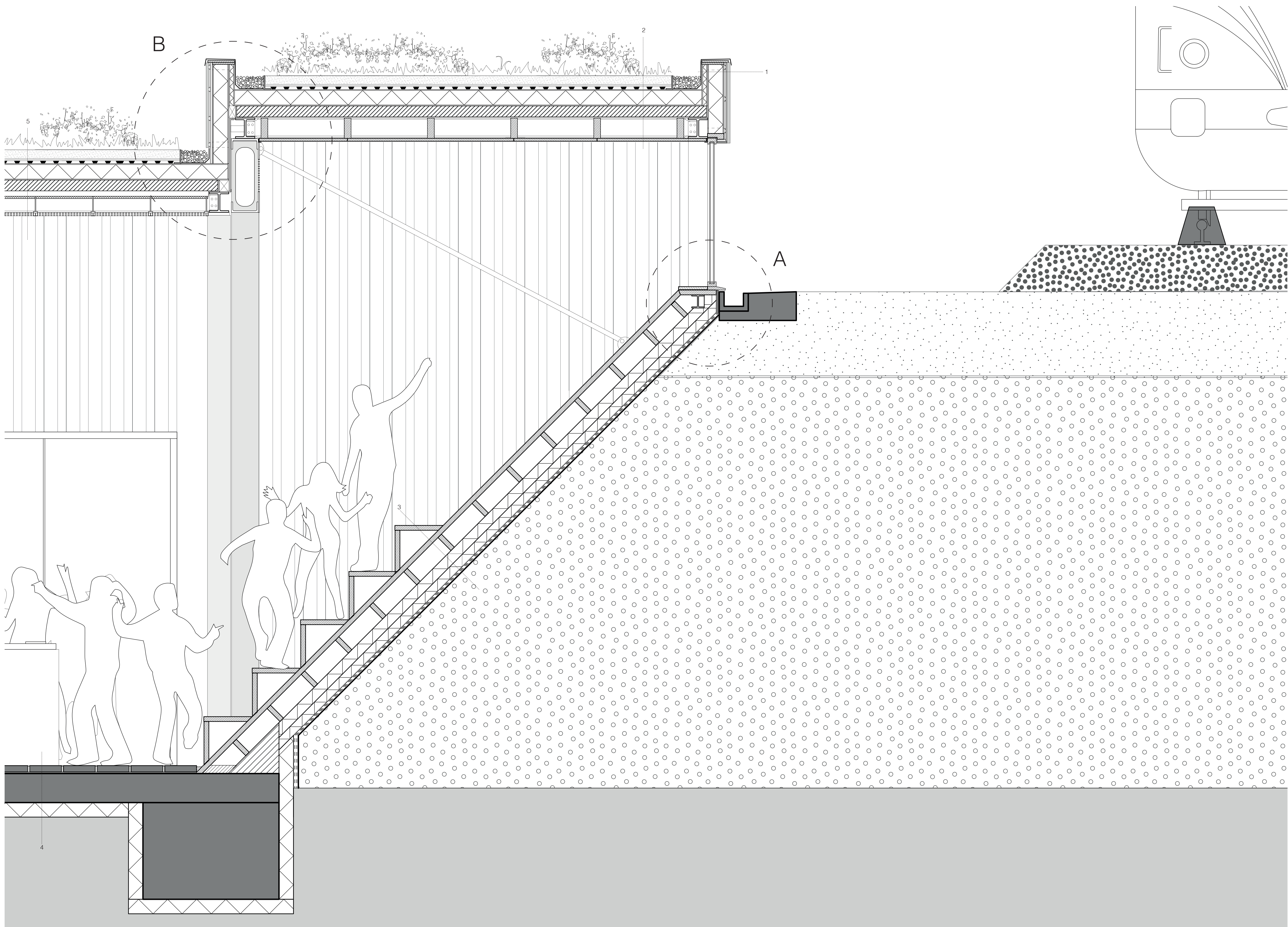
Design manifesto - Imagine by night, realise by day



Spatial sequence - day & night



Spatial sequence - day & night



Embankment structure / Tribune section 1:20

Detail notations

1: Embankment space facade

- (From left to right)
- Steel plate
 - Weather resistant membrane
 - Mineral wool insulation
 - Metal stud frame
 - Corrugated steel plate facade cladding

2: Embankment space roof

- (From interior to exterior)
- MDF wood panel ceiling
 - Wooden suspended ceiling structure
 - Space for technical systems (e.g. electricity cables, heating/cooling etc.)
 - Steel plate ceiling
 - Green roof:
 - Vapour control layer
 - Mineral wool insulation
 - Aeration layer
 - Moisture retention layer
 - Reservoir layer
 - Filter fabric
 - Engineered soil with planting

3: Slanted facade

- (From interior to exterior)
- Wooden stair structure
 - Wooden flooring panels
 - Wooden lattice structure
 - Mineral wool insulation
 - Water resistant membrane
 - Embankment soil

4: Atelier/club floor

- (From interior to exterior)
- Concrete pavement tiles
 - Mortar
 - Concrete foundation
 - Mineral wool insulation

5: Atelier/club roof

- (From interior to exterior)
- Steel grate panel
 - Hanger wires
 - Space for technical systems (e.g. electricity cables, heating/cooling etc.)
 - Acoustic panels (sound absorbing)
 - Wooden framework
 - Steel plate ceiling
 - Green roof:
 - Vapour control layer
 - Mineral wool insulation
 - Aeration layer
 - Moisture retention layer
 - Reservoir layer
 - Filter fabric
 - Engineered soil with planting

6: Social hall roof

- (From interior to exterior)
- Steel grate panel
 - Hanger wires
 - Space for technical systems (e.g. electricity cables, heating/cooling etc.)
 - Wooden framework
 - Steel plate ceiling
 - Green roof:
 - Vapour control layer
 - Mineral wool insulation
 - Aeration layer
 - Moisture retention layer
 - Reservoir layer
 - Filter fabric
 - Engineered soil with planting

7: Social hall facade 1

- (From interior to exterior)
- HE300A steel beam
 - Mineral wool insulation
 - Weather resistant membrane
 - Metal stud framework
 - Corrugated steel plate facade cladding

8: Circulation space roof

- (From interior to exterior)
- Acoustic spray (sound absorbing)
 - Wooden drywall panel
 - Space for technical systems (e.g. electricity cables, heating/cooling etc.)
 - Wooden framework
 - Steel plate ceiling
 - Green roof:
 - Vapour control layer
 - Mineral wool insulation
 - HE300A steel beam
 - Aeration layer
 - Moisture retention layer
 - Reservoir layer
 - Filter fabric
 - Engineered soil with planting

9: Social hall facade 2

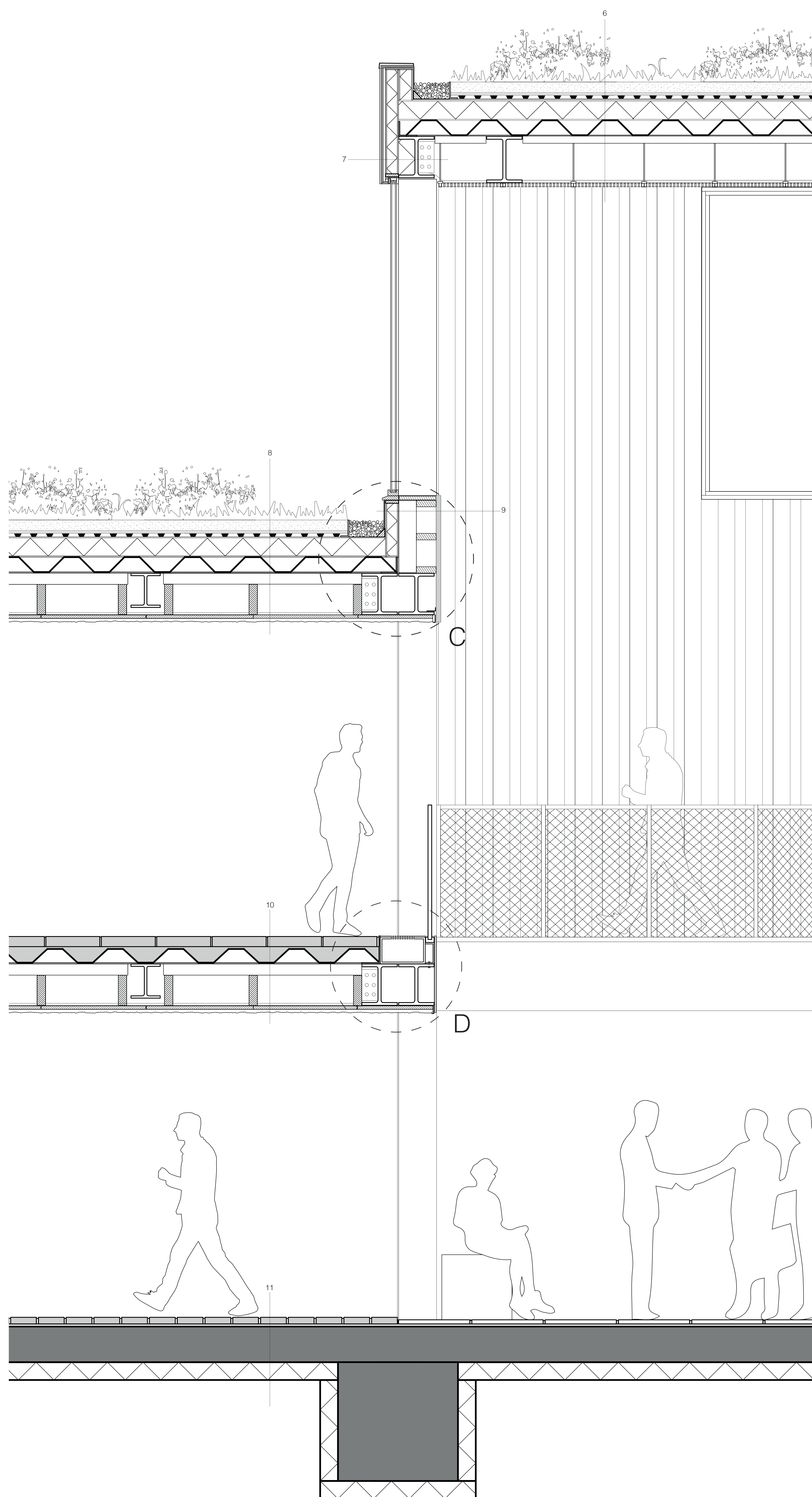
- (From interior to exterior)
- Steel plate
 - Weather resistant membrane
 - Mineral wool insulation
 - Wooden frame
 - Corrugated steel plate interior cladding

10: Circulation space 1st floor

- (From top to bottom)
- Concrete pavement tiles
 - Mortar
 - Composite floor (concrete-steel plate floor)
 - Wooden framework
 - Space for technical systems (e.g. electricity cables, heating/cooling etc.)
 - Wooden drywall panel
 - Acoustic spray ceiling (sound absorbing)

11: Circulation space ground floor

- From interior to exterior
- Concrete pavement tiles
 - Mortar
 - Concrete foundation
 - Mineral wool insulation



Social hall section 1:20

