

Document Version

Final published version

Licence

CC BY-NC

Citation (APA)

Van den Berg, M. A., Ahedi, H., Arden, N. K., Cicutini, F., Cootes, T., Crossley, K. M., Felson, D. T., Gielis, W. P., Kluzek, S., Lynch, J. A., Nelson, A. E., Weinans, H., Agricola, R., & More Authors (2025). Cam morphology and the risk of developing radiographic hip osteoarthritis within 8 years: an individual participant data meta-analysis of 23 886 hips from the world COACH consortium. *British Journal of Sports Medicine*, Article bjsports-2025-110144. <https://doi.org/10.1136/bjsports-2025-110144>

Important note

To cite this publication, please use the final published version (if applicable). Please check the document version above.

Copyright

In case the licence states “Dutch Copyright Act (Article 25fa)”, this publication was made available Green Open Access via the TU Delft Institutional Repository pursuant to Dutch Copyright Act (Article 25fa, the Taverne amendment). This provision does not affect copyright ownership. Unless copyright is transferred by contract or statute, it remains with the copyright holder.

Sharing and reuse

Other than for strictly personal use, it is not permitted to download, forward or distribute the text or part of it, without the consent of the author(s) and/or copyright holder(s), unless the work is under an open content license such as Creative Commons.

Takedown policy

Please contact us and provide details if you believe this document breaches copyrights. We will remove access to the work immediately and investigate your claim.



OPEN ACCESS

Cam morphology and the risk of developing radiographic hip osteoarthritis within 8 years: an individual participant data meta-analysis of 23 886 hips from the world COACH consortium

Jinchi Tang ,¹ Fleur Boel ,¹ Michiel MA van Buuren,¹ Noortje S Riedstra,¹ Myrthe A van den Berg,¹ Harbeer Ahedi,^{2,3} Nigel K Arden,⁴ Sita M A Bierma-Zeinstra,^{1,5} Cindy G Boer,⁶ Flavia Cicutini,⁷ Timothy Cootes,⁸ Kay M Crossley ,⁹ David T Felson,¹⁰ Willem-Paul Gielis,¹¹ Joshua J Heerey ,¹² Graeme Jones,² Stefan Kluzek,¹³ Nancy E Lane,¹⁴ Claudia Lindner,⁸ John A Lynch,¹⁵ Joyce van Meurs,^{1,6} Andrea Britt Mosler ,^{16,17} Amanda E Nelson,¹⁸ Michael Nevitt,¹⁵ Edwin H G Oei,¹⁹ Jos Runhaar,⁵ Harrie Weinans,²⁰ Rintje Agricola ¹

► Additional supplemental material is published online only. To view, please visit the journal online (<https://doi.org/10.1136/bjsports-2025-110144>).

For numbered affiliations see end of article.

Correspondence to

Rintje Agricola;
r.agricola@erasmusmc.nl

Accepted 15 October 2025

ABSTRACT

Objective To assess the relationship between cam morphology and the development of radiographic hip osteoarthritis (RHOA), overall and in subgroups based on age, biological sex and body mass index (BMI).

Methods Hips with no RHOA at baseline and with available follow-up during 4–8 years were selected from the Worldwide Collaboration on Osteoarthritis PrediCtion for the Hip (World COACH) consortium. Alpha angles were uniformly measured on anteroposterior radiographs, with a threshold of 60° used to define cam morphology. Incident RHOA was defined as the transition from an RHOA-free state at baseline to definite diagnosis of RHOA at follow-up. The association between baseline cam morphology and the development of RHOA was assessed using a three-level mixed-effects logistic regression model, accounting for hip side, individual and cohort-level variation.

Results A total of 23 886 hips were included (mean age: 62.2±8.4 years; 70.6% female; BMI: 27.4±4.5; mean time to follow-up: 6.1±3.0 years). Cam morphology was associated with RHOA (OR: 1.87, 95% CI 1.36 to 2.59), as was a greater alpha angle (OR 1.02, 95% CI 1.01 to 1.03 for every degree increase). The overall relative risk of developing RHOA in hips with cam morphology was 1.62 (95% CI 1.26 to 2.07), greatest for those aged 51–60 years (2.15, 95% CI 1.55 to 2.98) and higher in males (2.50, 95% CI 1.67 to 3.73), compared with females (1.75, 95% CI 1.24 to 2.48).

Conclusion Hips with cam morphology have higher odds of developing RHOA within 4–8 years compared with hips without cam morphology. The relative risk was highest in subgroups of participants aged 51–60 years and in males, making cam morphology a potential target for primary or secondary prevention of RHOA.

INTRODUCTION

Osteoarthritis (OA) is a highly prevalent musculoskeletal condition worldwide, affecting 15% of individuals aged 30 and older.¹ Its global prevalence (7.6% in 2020) is expected to surge in the

WHAT IS ALREADY KNOWN ON THIS TOPIC

⇒ Cam morphology primarily develops during adolescence and is strongly associated with athletic activity during this period. Although it has been identified as a risk factor for hip osteoarthritis, the strength of this association varies widely across studies, limiting its generalisability.

WHAT THIS STUDY ADDS

⇒ In this individual participant data meta-analysis, including 23 886 hips from nine prospective cohort studies, cam morphology was associated with an increased risk of developing radiographic hip osteoarthritis (RHOA). Specifically, hips with cam morphology had 1.9 times the risk of developing RHOA compared with those without. Subgroup analyses revealed that the association was particularly strong for males and among individuals aged 51–60.

HOW THIS STUDY MIGHT AFFECT RESEARCH PRACTICE OR POLICY

⇒ Cam morphology may be a key target for primary (to prevent the morphology from developing) or secondary (to prevent the development of RHOA) prevention strategies. High-risk subgroups, such as those identified in this study, could benefit from increased clinical attention during the earliest stages of disease development.

coming decades, followed by its heavy socio-economic costs.² Currently, hip OA management remains predominantly reactive, given the absence of curative treatments. This underscores the imperative need for a deeper and more thorough understanding of hip OA aetiology and risk factors (both causal and prognostic).

A potential causal risk factor for radiographic hip OA (RHOA) is cam morphology.³ It is characterised by the additional bone formation of varying sizes



© Author(s) (or their employer(s)) 2025. Re-use permitted under CC BY-NC. No commercial re-use. See rights and permissions. Published by BMJ Group.

To cite: Tang J, Boel F, van Buuren MMA, *et al.* *Br J Sports Med* Epub ahead of print: [please include Day Month Year]. doi:10.1136/bjsports-2025-110144

around the femoral head-neck junction, typically before growth plate closure, resulting in a non-spherical femoral head.^{4,5} This incongruity of the hip joint can result in painful abnormal contact between the femoral head-neck junction and acetabulum during motion, a condition referred to as femoroacetabular impingement (FAI) syndrome.⁶ This may cause cartilage damage (even in young adults) and eventually progress to early OA.^{7,8}

The association between cam morphology and RHOA has been demonstrated previously.^{9–14} A recent systematic review reported ORs ranging from 2.12 to 3.67 (combining data from three prospective studies) and ORs ranging from 4.57 to 10.38 in four cross-sectional studies.¹⁵ Combining data from existing cohort studies and uniformly measuring cam morphology to undertake individual participant data (IPD) meta-analysis could increase the generalisability of findings with larger combined sample size, standardised automated measurements and the ability to consider both cohort- and participant-level heterogeneity jointly.¹⁶

The primary aim of this study was to assess the association between cam morphology at baseline and subsequent development of RHOA over 4–8 years follow-up period using an IPD meta-analysis based on harmonised data from nine prospective cohorts. Secondary aims included examining whether this association differed by sex, age groups or body mass index (BMI).

METHODS

Study design and participants

The Worldwide Collaboration on OsteoArthritis prediction for the Hip (World COACH) consortium is an international collaboration currently comprising nine prospective cohort studies and has previously been described.¹⁷ In this study, we used data from the following included studies: Cohort Hip and Cohort Knee (CHECK) study,¹⁸ Chingford study,¹⁹ Johnston County Osteoarthritis Project (JoCoOA),²⁰ Multicentre Osteoarthritis Study (MOST),²¹ Osteoarthritis Initiative (OAI),²² Rotterdam Study (RS, including three subcohorts: RS1, RS2 and RS3)²³ and Study of Osteoporotic Fractures (SOF).²⁴

Hips were excluded if they had missing baseline demographic data, no or insufficient quality baseline radiographs or absence of RHOA scores at either baseline or follow-up. Data missingness

is described in online supplemental table 1. We deliberately included hips that showed no signs of RHOA at baseline to focus on the development of incident RHOA, eliminating potential biases from early RHOA signs, which can influence alpha angle measurements.

Radiographs

At baseline and follow-up, anteroposterior (AP) radiographs of the hip or pelvis were obtained according to the respective protocols.^{18–24} The CHECK, OAI and RS cohorts used standardised weight-bearing radiographs, while the Chingford, JoCoOA and SOF cohorts employed standardised supine radiographs. Additionally, the MOST cohort used standardised weight-bearing AP full-limb radiographs of the lower extremities.

Cam morphology

The alpha angle is a recommended radiological measurement to quantify cam morphology.⁴ It is the angle between the femoral head-neck axis and a line from the head centre to where the head-neck contour first leaves the best-fitting circle²⁵ (figure 1). In this study, the alpha angle was automatically and uniformly measured on baseline radiographs.²⁶ First, the proximal femur's bony margin was automatically annotated with landmark points using the BoneFinder software (The University of Manchester, UK).²⁷ Subsequently, an in-house, open-access and validated method was used to calculate the alpha angle from these landmarks. The automated method was validated by comparison to manual measurements, with inter-method intraclass correlation coefficients (ICCs) of 0.81 (95%CI 0.46 to 0.92) on dual-energy x-ray absorptiometry images²⁸ and 0.46 (95%CI 0.12 to 0.70) on AP pelvic radiographs.²⁹ A validated alpha angle threshold value of $\geq 60^\circ$ was used to define the presence of cam morphology.^{4,30,31} As dichotomising continuous measures may limit statistical power, we also investigated the effect of the alpha angle as a continuous variable.⁴

Outcome measures

Three classifications for RHOA grading were used in original databases, namely, the Kellgren and Lawrence (KL),^{18–21,23} the

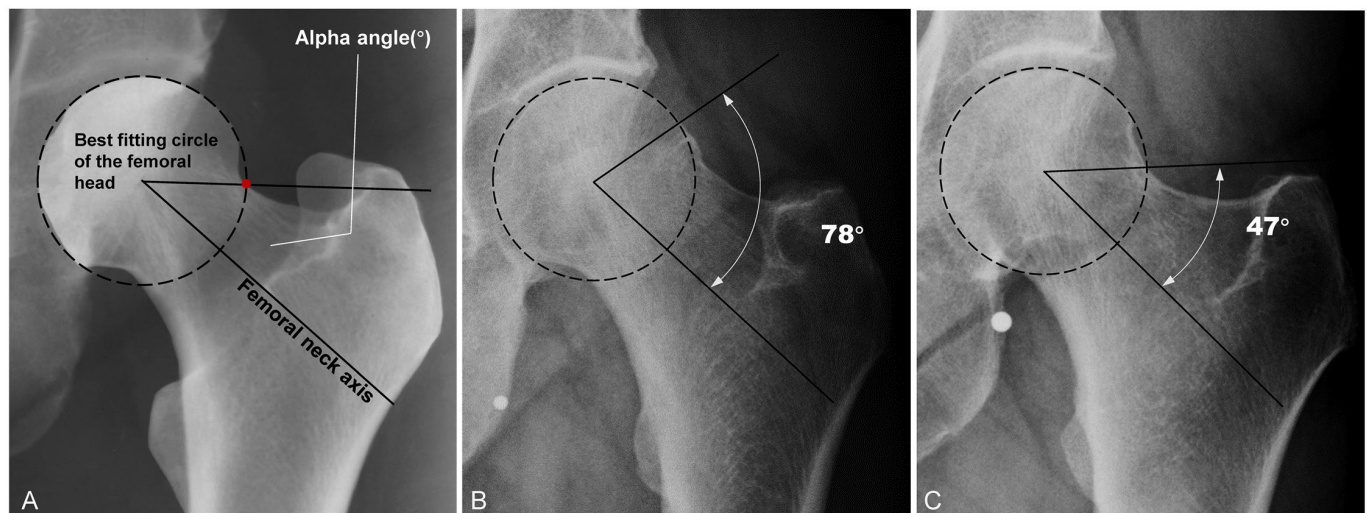


Figure 1 Measurement of the alpha angle on anteroposterior radiographs. (A) The alpha angle is the angle between the femoral neck axis (which passes through the centre of the femoral head and the femoral neck) and a line connecting the femoral head centre and alpha point (red point), where the contour of the femoral head-neck junction begins to leave the best-fitting circle of the femoral head; (B) hip with an alpha angle of 78° ; (C) hip with an alpha angle of 47° .

Croft²⁴ and the atlas of individual radiographic features in osteoarthritis (Osteoarthritis Research Society International atlas).²² These RHOA scores were harmonised into three ordinal categories through a harmonised interpretation: 'no RHOA' (any score of 0), 'doubtful RHOA' (any score of 1) and 'definite RHOA' (any score ≥ 2 or total hip replacement). The development of RHOA was defined by a transition from having 'no RHOA' at baseline to having 'definite OA' at follow-up.

Statistics

Descriptive statistics were used to analyse the baseline characteristics, stratified by cohort. Baseline characteristics were compared between included and excluded hips (independent or Welch's t-tests for continuous variables and χ^2 tests for categorical variables). Assumptions for all tests were assessed and not violated.

For the primary aim, two statistical models were employed. The first was a three-level mixed-effects logistic regression model (hip side, individual and cohort), accounting for the clustering of two hips per participant and among individuals across cohorts. Multivariate normality for the random effects was assumed. Results were expressed as ORs with 95% CIs, adjusted for age, sex and BMI. The association between continuous alpha angle and RHOA development was assessed using the same method. All analyses were repeated for sensitivity purposes by excluding the MOST cohort.

In the primary analysis, the reference group included hips with either no or doubtful RHOA. The influence of the development of 'doubtful RHOA' to 'definite RHOA' was assessed using a forward continuation ratio model (our second model), given that this transition is often considered a critical and irreversible step. This model treated RHOA as an ordinal outcome and relaxed the ordinality assumption for cam morphology. Results were presented as effect plots of marginal probabilities, adjusted for random effects with mean baseline age and BMI and randomly selected right hip side and stratified by sex.

For the secondary aim, we investigated potential interaction effects between cam morphology and demographics (sex, age and BMI) using unadjusted logistic regression. Significant interactions prompted further analysis to compute ORs for each demographic factor, considering females as the reference group for sex and treating age and BMI as continuous variables. Subsequent analyses stratified the data by sex, specific age groups (40–50, 51–60, 61–70 and over 70 years) and BMI categories (normal, BMI < 25 ; overweight, BMI ≥ 25). It was not possible to perform the analyses in every subgroup due to restricted numbers; instead, we provided descriptive statistics, including absolute and relative risk with 95% CI, for developing RHOA. The 95% CIs for the absolute and relative risk were determined using the Clopper–Pearson exact CI and Katz log method, respectively.

The linearity assumption for quantitative predictors was assessed for all logistic regression models and not violated. Statistical significance was determined as $p < 0.05$. Univariate analyses were performed in SPSS (v26.0) and other analyses in R (v4.1.1, The R Foundation, used package: lme4, GLMMadaptive and ggplot2).

Equity, diversity and inclusion

This study involves participants from diverse ethnic backgrounds across three continents, with a greater proportion of women than men. The author team was gender-balanced and included both junior and senior researchers from varied disciplines and

individuals from marginalised communities. All authors actively contributed to writing this manuscript.

RESULTS

Baseline participant characteristics

The World COACH consortium included available data from 77 230 hips. Of these, 38 811 hips were eligible for this study with both baseline and follow-up data (figure 2). From this group, 14 925 hips were excluded due to definite or doubtful signs of RHOA at baseline, leaving 23 886 hips for inclusion in the final analyses. Across all cohorts, the mean interval between the baseline and follow-up radiographs was 6.1 ± 3.0 years.

At baseline, hips excluded for definite or doubtful RHOA were from older individuals and had a higher prevalence of cam morphology (table 1). Results stratified by cohort are provided in online supplemental table 2.

Association between cam morphology and RHOA

The prevalence of cam morphology at baseline was 9.5% ($n=2271$). The incidence of RHOA was 3.2% in hips with cam morphology and 2.0% in those without. Detailed results per cohort are provided in online supplemental table 2. Cam morphology (alpha angle $\geq 60^\circ$) was associated with the development of incident RHOA with an OR of 1.87 (95%CI 1.36 to 2.59). A significant association was also observed between the continuous alpha angle and RHOA development with an OR of 1.02 (95%CI 1.01 to 1.03) for each degree increase in alpha angle (the crude ORs are provided in online supplemental table 3).

The effect plot of the marginal probabilities of the forward continuation ratio model is provided in figure 3. All marginal probabilities were calculated in males or females aged 62 years with a BMI of 27 kg/m². Marginal probabilities indicated that cam morphology increased the likelihood of developing doubtful RHOA to 21% (95% CI 15% to 27%) in females and 23% (95% CI 16% to 30%) in males, compared with 17% (95% CI 11% to 23%) and 18% (95% CI 11% to 25%) in those without cam morphology, respectively. For definite RHOA, probabilities were 5% (95% CI 2% to 10%) in females and 4% (95% CI 1% to 9%) in males with cam morphology vs 2% (95% CI 1% to 6%) in females and 2% (95% CI 1% to 5%) in males without cam morphology.

The sensitivity analysis excluded 2009 hips with full-limb radiographs from the MOST cohort, leading to a total of 21 377 hips for analysis. The association between cam morphology (alpha angle $\geq 60^\circ$) and the development of incident RHOA showed similar results with an OR of 1.82 (95%CI 1.31 to 2.52) and 1.02 (95%CI 1.01 to 1.03) for continuous alpha angle.

Interaction effect and subgroup analyses

The interaction analysis indicated that the association between cam morphology and the development of incident RHOA differed by sex (P value: 0.014), whereas no meaningful interaction was observed with age (P value: 0.417) or BMI (P value: 0.387). Specifically, male hips with cam morphology showed an OR of 3.09 (95%CI 1.38 to 6.90) for developing RHOA compared with those without cam morphology, see online supplemental table 4. In contrast, an OR of 1.36 (95%CI 0.87 to 2.11) was observed in females. The absolute risk and relative risk of developing RHOA for hips with cam morphology in subgroup analyses stratified by sex, age groups and BMI categories are provided in table 2. The highest relative risk was found in the 51–60 years group (2.15; 95% CI 1.55 to 2.98) among

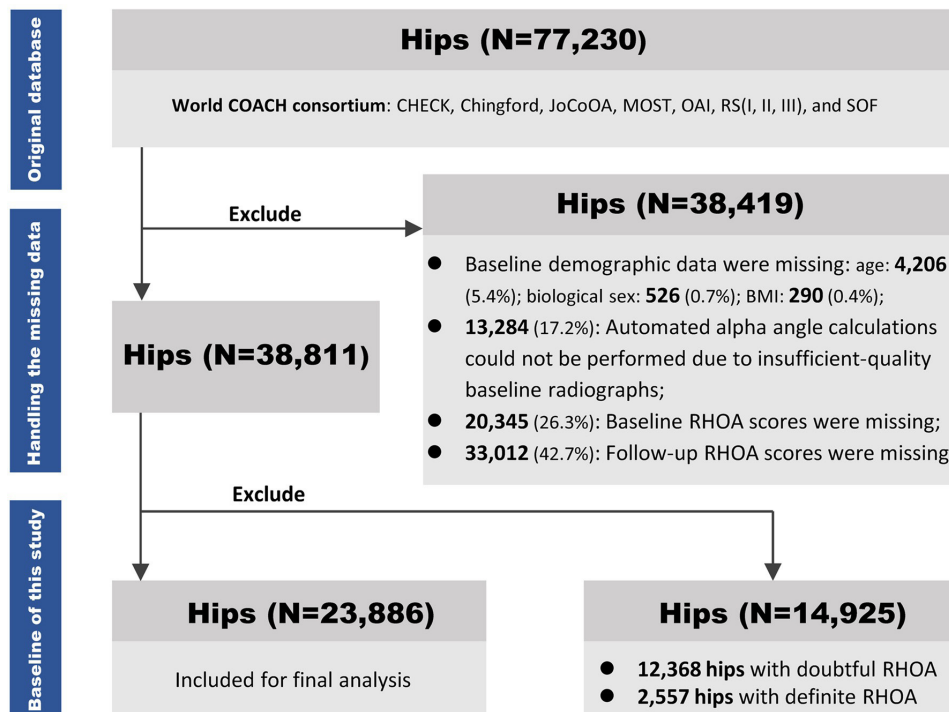


Figure 2 Complete flow of hips from the original dataset to the baseline of this study. BMI, body mass index; CHECK, Cohort Hip and Cohort Knee; JoCoOA, Johnston County Osteoarthritis Project; MOST, Multicentre Osteoarthritis Study; OAI, Osteoarthritis Initiative; RHOA, radiographic hip osteoarthritis; RS, Rotterdam Study; SOF, Study of Osteoporotic Fractures.

three age subgroups, and males showed a higher relative risk (2.50; 95% CI 1.67 to 3.73) compared with females.

DISCUSSION

In this IPD meta-analysis, cam morphology as well as a higher alpha angle was significantly associated with incident RHOA within 4–8 years. Using the largest sample size to date, standardised and repeatable automated measurement and excluding doubtful RHOA cases at baseline, this study provides a robust estimate. Also, the large sample allowed subgroup analysis, confirming that the strength of association was highest in males and in participants aged 51–60 years.

Our study confirmed that cam morphology is a notable risk factor for developing RHOA in individuals without any existing radiographic signs of hip OA. Early identification through simple

radiographic measurements can help identify high-risk groups before symptoms develop. Early detection of cam morphology could promote preventive measures, including lifestyle and physical activity interventions, potentially mitigating the risk of developing RHOA. These findings highlight the importance of further investigating the aetiology of cam morphology and specifically primary cam morphology. Although primary cam morphology remains stable after skeletal maturity,⁵ its formation could potentially be influenced during growth, making it a target for primary prevention.³² Adolescents may benefit from targeted load management, periodised training and education.

Interestingly, our results suggest that the risk posed by cam morphology for developing RHOA may be slightly lower than previously reported. It was reported that not all shape variants captured by alpha angle $\geq 60^\circ$ are relevant to RHOA development.³³ Future research may focus on further subclassifying cam morphology (eg, by shape or volume) and integrate imaging findings with clinical symptoms of FAI syndrome to improve risk prediction.³⁴

Descriptive subgroup analyses, addressing our second aim, indicate that the risk of developing RHOA due to cam morphology does not consistently increase with age. Individuals aged 51–60 may especially benefit from preventative strategies. Additionally, males have a higher risk of RHOA than females, likely due to their higher mean alpha angle, which is associated with cartilage defects and labral tears³⁵ and the absolute higher prevalence of cam morphology. These insights highlight the need to consider various demographic and physical characteristics in RHOA prevention strategies.

The considerable variability in previous findings may stem from differences in population, alpha angle measurement and RHOA definition. First, demographic characteristics varied widely in previous studies, such as a mean age <50 years³⁵ versus >60 years¹⁰, a mean BMI >30³⁶ versus <26³⁷ and asymptomatic

Table 1 Difference in characteristics between included and excluded hips at baseline

Baseline characteristic	Baseline of this study		P value
	Included hips (n=23 886)	Excluded hips (n=14 925)	
Age in years: mean (SD)	62.21 (8.36)	65.40 (8.43)	<0.001
Women, no (%)	16 875 (70.6)	10 636 (71.3)	0.195
BMI, kg/m ² : mean (SD)	27.35 (4.48)	27.56 (4.75)	<0.001
Alpha angle, °: mean (SD)	46.40 (10.17)	48.11 (11.98)	<0.001
Cam morphology: no (%)	2271 (9.51)	2128 (14.26)	<0.001
No RHOA: no (%)	23 886(100)	0 (0)	–
Doubtful RHOA: no (%)	0 (0)	12 368 (82.90)	–
Definite RHOA: no (%)	0 (0)	2557 (17.10)	–

Standard independent t-test for age and Welch's t-test for BMI and alpha angle to account for unequal variances were used.
BMI, body mass index; RHOA: radiographic hip osteoarthritis.

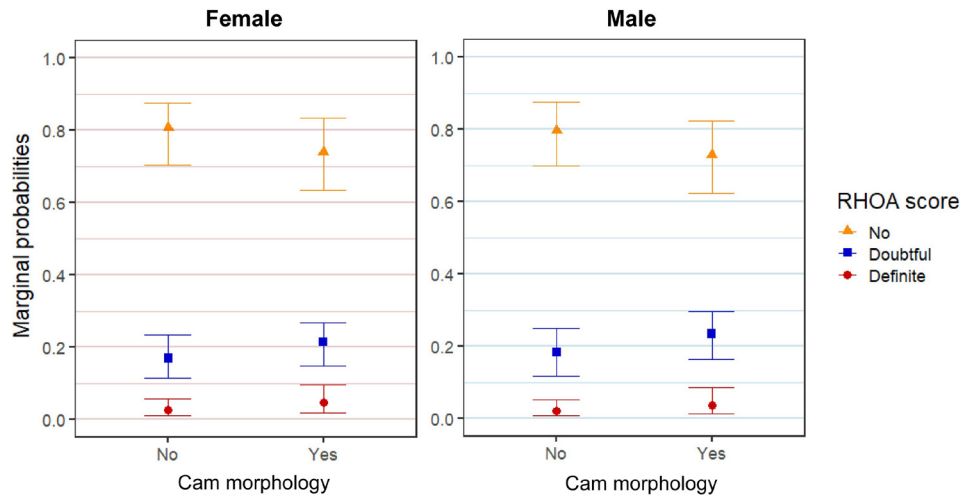


Figure 3 Effect plot of the marginal probabilities of RHOA within 4-8 years for females and males, aged 62 years, and BMI of 27 kg/m². BMI, body mass index; RHOA, radiographic hip osteoarthritis.

vs symptomatic individuals.³⁷ Lastly, some studies defined the development of RHOA as a transition from KL grade <3 at baseline to KL grade >3 at follow-up,³⁶ while others defined it as a KL grade ≥2 at follow-up from KL grade <2 at baseline. These inconsistencies limit generalisability. By accounting for these variabilities, our study found a lower OR of 1.87 (95% CI 1.36 to 2.59), compared with previously reported results. The result for the continuous alpha angle showed similar lower strength (OR 1.02 (95% CI 1.01 to 1.03)), compared with previous OR of 1.63 (95% CI 1.58 to 1.67) found in the UK Biobank study.³⁸

Excluding hips with doubtful RHOA at baseline likely accounted for the lower association strength compared with prior studies. Despite removing 12 368 such cases, the large sample size still allowed for robust analysis. Previous research often included doubtful cases in the non-RHOA groups, potentially during early RHOA transitions. Doubtful RHOA, characterised by uncertain joint space narrowing and possible osteophyte formation,³⁹⁻⁴¹ often precedes more definitive RHOA, thereby influencing outcomes. Our forward continuation ratio model confirmed higher marginal probabilities for developing both doubtful and definite RHOA in hips with cam morphology. For example, the CHECK study previously reported a 23.8% 8-year RHOA incidence,³⁷ while we observed 13% RHOA incidence in the same cohort with our updated criteria. Including doubtful cases may overestimate RHOA prevalence and misclassify baseline cam morphology, as early RHOA signs can elevate

alpha angle readings. This was supported by our findings: excluded hips displayed larger alpha angles than those included, suggesting early structural changes indicative of RHOA progression. This study is the first to apply a methodology that establishes a clear association between cam morphology and RHOA without the influence of doubtful RHOA. We recommend that future research adopt a similar strategy, provided that the sample size is sufficient to support robust analyses.

While an AP radiograph is not the gold standard for measuring cam morphology, its effectiveness in predicting RHOA has been demonstrated in our findings and previous studies.^{11 42} Cam morphology is a three-dimensional structure, and different planes in CT and MRI images provide more detailed information. However, the use of CT and MRI for large-scale screening is limited; CT and MRI scans are time-consuming, expensive and require specialist facilities and radiologists. Therefore, radiographs may be the best solution as a screening tool for large samples. Although lateral views (eg, Dunn 45 or frog-leg) are more sensitive for detecting cam morphology, they are less commonly used than AP views in most cohort studies. Cam morphology is mostly located at the anterosuperior part of the femoral head-neck junction, and the more superiorly located cam morphologies are captured well on AP views.⁴³ Our sensitivity analysis, which excluded the MOST study with full-limb radiographs, indicates that minor differences in radiographic protocol had a limited impact on the results of this study.

Table 2 Absolute risk and relative risk for developing radiographic hip osteoarthritis stratified by age, sex or body mass index groups

Subgroup	N (%)	Alpha angle, °: mean (SD)	Cam morphology: No (%)	RHOA				
				In hips with cam morphology	In hips without cam morphology	Absolute risk in % (95% CI)	Relative risk (95% CI)	
Age in years	40-50	2083 (8.7)	48.27 (11.38)	287 (13.8)	5	49	1.74 (0.23 to 3.26)	0.64 (0.26 to 1.59)
	51-60	8155 (34.1)	46.90 (10.56)	853 (10.5)	43	171	5.04 (3.67 to 6.73)	2.15 (1.55 to 2.98)
	61-70	9340 (39.1)	45.84 (9.82)	768 (8.2)	17	143	2.21 (1.29 to 3.52)	1.33 (0.81 to 2.18)
	Over 70	4308 (18.0)	45.78 (9.57)	363 (8.4)	7	61	1.93 (0.78 to 3.93)	1.25 (0.57 to 2.71)
Biological sex	Female	16 875 (70.6)	44.26 (8.65)	853 (5.1)	34	364	3.99 (2.78 to 5.53)	1.75 (1.24 to 2.48)
	Male	7011 (29.4)	51.56 (11.62)	1418 (20.2)	38	60	2.68 (1.90 to 3.66)	2.50 (1.67 to 3.73)
BMI, kg/m ²	<25	7880 (33.0)	45.30 (9.82)	602 (7.6)	24	169	3.99 (2.57 to 5.87)	1.72 (1.13 to 2.61)
	≥25	16 006 (67.0)	46.95 (10.30)	1669 (10.4)	48	255	2.88 (2.13 to 3.80)	1.62 (1.19 to 2.19)

BMI, body mass index; RHOA, radiographic hip osteoarthritis.

However, the potential influence of using full-limb radiographs may be underestimated due to the relatively small contribution of the MOST cohort (9% of the total sample).

Our analyses included participants' baseline age, biological sex and BMI as confounders. Structural changes of RHOA have been found to occur with increasing age and showed differences between sexes.⁴⁴ Although the causal association of obesity in the incidence and progression of OA is more pronounced in the knee joint compared with the hip,^{45 46} recent studies suggest a potential causal role for obesity in hip OA as well.^{47–49} Generally, obesity can lead to abnormal biomechanical loading on weight-bearing joints, as well as altered metabolism and inflammation.⁵⁰ Therefore, we included BMI as a confounder in analyses, despite obesity's inconclusive role in hip OA.

Limitations and strengths

This study has several limitations. First, limitations relating to our data. We relied solely on AP radiographs to quantify cam morphology. While we recognise the practicality of radiographs for large-scale studies, they are less detailed compared with MRI or CT scans and underestimate both the magnitude of the alpha angle and the prevalence of cam morphology. This underestimation may also differ by sex, due to subtle differences in the typical location of cam morphology between males and females.⁵¹ In addition, ethnicity data were not included, as these were incomplete across part of the original datasets. Inclusion of ethnicity would therefore reduce the sample size of the current study. We acknowledge that incorporating this information could enhance generalisability of our findings. Our findings are also limited by the age demographics of our sample, with a mean age of 62 years, making them less applicable to individuals under 40 years old, as the age range spanned from 40 to over 70 years. In addition, we did not consider the influence of other hip morphologies, such as hip dysplasia or pincer morphology, which may also contribute to the development of RHOA and thus impact the association between cam morphology and RHOA.

Second, methodological limitations should be considered. Although the harmonised three-level RHOA grading system is the most appropriate approach for a study of this scale, we acknowledge that variability in assessors' experience and grading protocols across part of the original cohorts could have influenced the results. Additionally, the inter-rater and inter-method ICCs for alpha angle measurements were low to moderate, potentially limiting the sensitivity of this metric for identifying individuals at risk. Additionally, we only adjusted for age, biological sex and BMI, so unmeasured confounders may be of importance in the association and should be studied in future work.

Important strengths of this analysis include the combination of populations from diverse cohorts, uniform calculation for alpha angle and more strict definition for the development of RHOA, supporting the robust and generalisable nature of our findings.

CONCLUSION

Cam morphology defined by alpha angle $\geq 60^\circ$ measured on AP pelvic radiographs and greater continuous alpha angles is associated with the development of RHOA over 4–8 years follow-up. Our results highlight the need for research on primary and secondary prevention of cam morphology development and its early hip disease consequences. Such measures could impact the development and burden of hip OA.

Author affiliations

- ¹Department of Orthopaedics and Sports Medicine, Erasmus MC University Medical Center, Rotterdam, Netherlands
- ²University of Tasmania, Hobart, Tasmania, Australia
- ³University of Sydney, Camperdown, New South Wales, Australia
- ⁴Nuffield Department of Orthopaedics, University of Oxford, Oxford, UK
- ⁵Department of General Practice, Erasmus MC University Medical Center, Rotterdam, Netherlands
- ⁶Department of Internal Medicine, Erasmus MC University Medical Center, Rotterdam, Netherlands
- ⁷Department of Epidemiology and Preventive Medicine, Monash University, Melbourne, Victoria, Australia
- ⁸University of Manchester, Manchester, UK
- ⁹La Trobe University, Melbourne, Victoria, Australia
- ¹⁰Boston University School of Medicine, Boston, Massachusetts, USA
- ¹¹Department of Orthopedics, University Medical Center Utrecht, Utrecht, Netherlands
- ¹²La Trobe Sport and Exercise Medicine Research Centre, School of Allied Health, Human Services and Sport, La Trobe University, Melbourne, Victoria, Australia
- ¹³University of Nottingham, Nottingham, UK
- ¹⁴Department of Medicine, University of California at Davis, Sacramento, California, USA
- ¹⁵Department of Epidemiology and Biostatistics, University of California San Francisco, San Francisco, California, USA
- ¹⁶La Trobe Sport and Exercise Medicine Research Centre, La Trobe University - Bundoora Campus, Melbourne, Victoria, Australia
- ¹⁷Australian IOC Research Centre, Melbourne, Victoria, Australia
- ¹⁸Thurston Arthritis Research Center, Chapel Hill, North Carolina, USA
- ¹⁹Department of Radiology & Nuclear Medicine, Erasmus MC University Medical Center, Rotterdam, Netherlands
- ²⁰Department of Biomechanical Engineering, Delft University of Technology, Delft, Netherlands

Acknowledgements We would like to thank all participants of the cohort studies that are involved in the Worldwide Collaboration on Osteoarthritis Prediction for the Hip (World COACH) consortium. We gratefully acknowledge all international organisations that collaborated with the cohort studies in World COACH, as well as the Osteoarthritis Research Society International for endorsing the World COACH consortium. We thank the (non-profit) funding bodies who financially support the World COACH consortium: the Dutch Arthritis Society (grant no 18-2-203 and 21-1-205), the Dutch Research Council (NWO Veni grant scheme no. 09150161910071) and the Erasmus MC, University Medical Center, Rotterdam (Erasmus MC Fellowship). This research was part of the flagship Healthy Joints.CHECK: The CHECK study was initiated by the Dutch Arthritis Society and performed within: Erasmus Medical Center Rotterdam; Kennemer Gasthuis Haarlem; Leiden University Medical Center; Maastricht University Medical Center; Martini Hospital Groningen/Allied Health Care Center for Rheum and Rehabilitation Groningen; Medical Spectrum Twente Enschede/Ziekenhuisgroep Twente Almelo; Reade, formerly Jan van Breemen Institute/VU Medical Center Amsterdam; St Maartens-kliniek Nijmegen; University Medical Center Utrecht and Wilhelmina Hospital Assen. Chingford: We would like to thank all the participants of the Chingford Women Study, Professor Nigel Arden, Professor Tim Spector, Dr Deborah Hart, Mr Gem Lawson, Maxine Daniels and Alison Turner for their time and dedication and Arthritis Research UK for their funding support to the study and the Oxford NIHR Musculoskeletal Biomedical Research Unit for funding contributions. JoCoOA: Support for data from the Johnston County Osteoarthritis Project was provided in part by: the Center for Disease Control and Prevention (CDC) U01DP006266 and U01DP003206; Association of Schools of Public Health/CDC S043, S1734, S3486; and National Institutes of Health/ National Institute of Arthritis and Musculoskeletal and Skin Diseases P60AR30701, P60AR049465, P60AR064166, and P30AR072580. MOST: The MOST study was funded by the National Institutes of Health – National Institute on Aging grants AG19069 (Michael Nevitt, University of California, San Francisco) AG18820 (David Felson, Boston University) AG18947 (Cora Lewis, University of Alabama at Birmingham) and AG18832 (James Torner, University of Iowa). OAI: The OAI is a public-private partnership comprised of five contracts (N01-AR-2-2258; N01-AR-2-2259; N01-AR-2-2260; N01-AR-2-2261; N01-AR-2-2262) funded by the National Institutes of Health, a branch of the Department of Health and Human Services, and conducted by the OAI Study Investigators. Private funding partners include Merck Research Laboratories; Novartis Pharmaceuticals Corporation, GlaxoSmithKline; and Pfizer, Inc Rotterdam Study: The Rotterdam Study is funded by Erasmus University Medical Center and Erasmus University, Rotterdam, The Netherlands Organisation for Health Research and Development (ZonMw), the Research Institute for Diseases in the Elderly (RIDE), the Ministry of Education, Culture and Science, the Ministry for Health, Welfare and Sports, the European Commission (DG XII), and the Municipality of Rotterdam. The authors are grateful to the study participants, the staff from the Rotterdam Study and the participating general practitioners and pharmacists. SOF: The Study of Osteoporotic Fractures (SOF) is supported by National Institutes

of Health funding. The National Institute on Aging (NIA) provides support under the following grant numbers: R01 AG005407, R01 AR35582, R01 AR35583, R01 AR35584, R01 AG005394, R01 AG027574, and R01 AG027576.

Contributors Concept and design: RA; acquisition of data: all authors; analysis or interpretation of data: MMAB, FB, NSR, MAB, JT and RA; drafting of the manuscript: JT; critical revision of the manuscript for important intellectual content: all authors; statistical analysis: FB and JT; supervision: RA. JT acts as guarantor and accepts full responsibility for the finished work and/or the conduct of the study, had access to the data and controlled the decision to publish.

Funding JT was funded by China Scholarship Council with grant no: 202006170050. CL was funded by a Sir Henry Dale Fellowship jointly funded by the Wellcome Trust and the Royal Society (223267/Z/21/Z). This research was funded in whole, or in part, by the Wellcome Trust (grant no: 223267/Z/21/Z). For the purpose of open access, the authors have applied a CC BY public copyright licence to any Author Accepted Manuscript version arising from this submission. The World COACH consortium has been funded through research grants by the Dutch Arthritis Society (grant no 18-2-203 and 21-1-205), the Dutch Research Council (NWO Veni grant scheme no: 09150161910071), Erasmus MC, University Medical Center Rotterdam (Erasmus MC Fellowship) and Convergence Flagship Healthy Joints.

Competing interests None declared.

Patient and public involvement Patients and/or the public were involved in the design, or conduct, or reporting, or dissemination plans of this research. Refer to the Methods section for further details.

Patient consent for publication Not applicable.

Ethics approval This study involves human participants and was approved by Erasmus MC Medical Ethics Review Committee. Participants gave informed consent to participate in the study before taking part.

Provenance and peer review Not commissioned; externally peer reviewed.

Data availability statement Data are available upon reasonable request.

Supplemental material This content has been supplied by the author(s). It has not been vetted by BMJ Publishing Group Limited (BMJ) and may not have been peer-reviewed. Any opinions or recommendations discussed are solely those of the author(s) and are not endorsed by BMJ. BMJ disclaims all liability and responsibility arising from any reliance placed on the content. Where the content includes any translated material, BMJ does not warrant the accuracy and reliability of the translations (including but not limited to local regulations, clinical guidelines, terminology, drug names and drug dosages), and is not responsible for any error and/or omissions arising from translation and adaptation or otherwise.

Open access This is an open access article distributed in accordance with the Creative Commons Attribution Non Commercial (CC BY-NC 4.0) license, which permits others to distribute, remix, adapt, build upon this work non-commercially, and license their derivative works on different terms, provided the original work is properly cited, appropriate credit is given, any changes made indicated, and the use is non-commercial. See: <https://creativecommons.org/licenses/by-nc/4.0/>.

ORCID iDs

Jinchi Tang <https://orcid.org/0000-0002-1028-5922>

Fleur Boel <https://orcid.org/0000-0002-0421-9478>

Kay M Crossley <https://orcid.org/0000-0001-5892-129X>

Joshua J Heerey <https://orcid.org/0000-0001-8691-1830>

Andrea Britt Mosler <https://orcid.org/0000-0001-7353-2583>

Rintje Agricola <https://orcid.org/0000-0002-0645-093X>

REFERENCES

- Steinmetz JD, Culbreth GT, Haille LM, *et al*. Global, regional, and national burden of osteoarthritis, 1990–2020 and projections to 2050: a systematic analysis for the Global Burden of Disease Study 2021. *The Lancet Rheumatology* 2023;5:e508–22.
- Hunter DJ, Bierma-Zeinstra S. Osteoarthritis. *Lancet* 2019;393:1745–59.
- Agricola R, Waarsing JH, Arden NK, *et al*. Cam impingement of the hip: a risk factor for hip osteoarthritis. *Nat Rev Rheumatol* 2013;9:630–4.
- Dijkstra HP, Mc Auliffe S, Arden CL, *et al*. Oxford consensus on primary cam morphology and femoroacetabular impingement syndrome: part 1—definitions, terminology, taxonomy and imaging outcomes. *Br J Sports Med* 2022;57:325–41.
- van Klij P, Heijboer MP, Ginai AZ, *et al*. Cam morphology in young male football players mostly develops before proximal femoral growth plate closure: a prospective study with 5-year follow-up. *Br J Sports Med* 2019;53:532–8.
- Griffin DR, Dickenson EJ, O'Donnell J, *et al*. The Warwick Agreement on femoroacetabular impingement syndrome (FAI syndrome): an international consensus statement. *Br J Sports Med* 2016;50:1169–76.
- Heerey J, Kemp J, Agricola R, *et al*. Cam morphology is associated with MRI-defined cartilage defects and labral tears: a case-control study of 237 young adult football players with and without hip and groin pain. *BMJ Open Sport Exerc Med* 2021;7:e001199.
- Claes PAM, Hanff DF, Weir A, *et al*. The Association Between the Development of Cam Morphology During Skeletal Growth in High-Impact Athletes and the Presence of Cartilage Loss and Labral Damage in Adulthood: A Prospective Cohort Study With a 12-Year Follow-up. *Am J Sports Med* 2024;52:2555–64.
- Ahedi H, Winzenberg T, Bierma-Zeinstra S, *et al*. A prospective cohort study on cam morphology and its role in progression of osteoarthritis. *Int J Rheum Dis* 2022;25:601–12.
- Saber Hosnijeh F, Zuiderwijk ME, Versteeg M, *et al*. Cam Deformity and Acetabular Dysplasia as Risk Factors for Hip Osteoarthritis. *Arthritis Rheumatol* 2017;69:86–93.
- Agricola R, Heijboer MP, Bierma-Zeinstra SMA, *et al*. Cam impingement causes osteoarthritis of the hip: a nationwide prospective cohort study (CHECK). *Ann Rheum Dis* 2013;72:918–23.
- Bardakos NV, Villar RN. Predictors of progression of osteoarthritis in femoroacetabular impingement: a radiological study with a minimum of ten years follow-up. *J Bone Joint Surg Br* 2009;91:162–9.
- Doherty M, Courtney P, Doherty S, *et al*. Nonspherical femoral head shape (pistol grip deformity), neck shaft angle, and risk of hip osteoarthritis: a case-control study. *Arthritis Rheum* 2008;58:3172–82.
- Nicholls AS, Kiran A, Pollard TCB, *et al*. The association between hip morphology parameters and nineteen-year risk of end-stage osteoarthritis of the hip: a nested case-control study. *Arthritis Rheum* 2011;63:3392–400.
- Casartelli NC, Maffiuletti NA, Valenzuela PL, *et al*. Is hip morphology a risk factor for developing hip osteoarthritis? A systematic review with meta-analysis. *Osteoarthr Cartil* 2021;29:1252–64.
- Maxwell L, Shreedhar P, Carabali M, *et al*. How to plan and manage an individual participant data meta-analysis. An illustrative toolkit. *Res Synth Methods* 2024;15:166–74.
- van Buuren MMA, Riedstra NS, van den Berg MA, *et al*. Cohort profile: Worldwide Collaboration on OsteoArthritis prediCtion for the Hip (World COACH) - an international consortium of prospective cohort studies with individual participant data on hip osteoarthritis. *BMJ Open* 2024;14:e077907.
- Wesseling J, Boers M, Viergever MA, *et al*. Cohort Profile: Cohort Hip and Cohort Knee (CHECK) study. *Int J Epidemiol* 2016;45:36–44.
- Hart DJ, Spector TD. Cigarette smoking and risk of osteoarthritis in women in the general population: the Chingford study. *Ann Rheum Dis* 1993;52:93–6.
- Nelson AE, Hu D, Arbeeve L, *et al*. Point prevalence of hip symptoms, radiographic, and symptomatic OA at five time points: The Johnston County Osteoarthritis Project, 1991–2018. *Osteoarthritis and Cartilage Open* 2022;4:100251.
- Segal NA, Nevitt MC, Gross KD, *et al*. The Multicenter Osteoarthritis Study: Opportunities for Rehabilitation Research. *PM&R* 2013;5:647–54.
- Nevitt M, Felson D, Lester G. 1. The osteoarthritis initiative. protocol for the cohort study. 2006.
- Hofman A, Murad SD, van Duijn CM, *et al*. The Rotterdam Study: 2014 objectives and design update. *Eur J Epidemiol* 2013;28:889–926.
- Cummings SR. Appendicular Bone Density and Age Predict Hip Fracture in Women. *JAMA* 1990;263:665.
- Nötzli HP, Wyss TF, Stoecklin CH, *et al*. The contour of the femoral head-neck junction as a predictor for the risk of anterior impingement. *J Bone Joint Surg Br* 2002;84:556–60.
- Boel F, Riedstra NS, Tang J, *et al*. Reliability and agreement of manual and automated morphological radiographic hip measurements. *Osteoarthr Cartil Open* 2024;6:100510.
- Lindner C, Thiagarajah S, Wilkinson JM, *et al*. Fully automatic segmentation of the proximal femur using random forest regression voting. *IEEE Trans Med Imaging* 2013;32:1462–72.
- Boel F, de Vos-Jakobs S, Riedstra NS, *et al*. Automated radiographic hip morphology measurements: An open-access method. *Osteoarthr Imaging* 2024;4:100181.
- Boel F, Riedstra NS, Tang J, *et al*. Reliability and agreement of manual and automated morphological radiographic hip measurements. *Osteoarthritis and Cartilage Open* 2024;6:100510.
- Mascarenhas VV, Castro MO, Afonso PD, *et al*. The Lisbon Agreement on femoroacetabular impingement imaging—part 2: general issues, parameters, and reporting. *Eur Radiol* 2021;31:4634–51.
- van Klij P, Reiman MP, Waarsing JH, *et al*. Classifying Cam Morphology by the Alpha Angle: A Systematic Review on Threshold Values. *Orthop J Sports Med* 2020;8:2325967120938312.
- Agricola R, Bessems JHJM, Ginai AZ, *et al*. The development of Cam-type deformity in adolescent and young male soccer players. *Am J Sports Med* 2012;40:1099–106.
- Tang J, Boel F, van Buuren MMA, *et al*. The different subtypes of cam morphology as defined by statistical shape modeling and their relationship with the development of hip osteoarthritis: A nationwide prospective cohort study (CHECK) with 10 years follow-up. *Osteoarthr Cartil* 2024;32:1647–54.
- Agricola R, van Buuren MMA, Kemp JL, *et al*. Femoroacetabular impingement syndrome in middle-aged individuals is strongly associated with the development of hip osteoarthritis within 10-year follow-up: a prospective cohort study (CHECK). *Br J Sports Med* 2024;58:1061–7.

- 35 Kemp JL, Østerås N, Mathiessen A, *et al.* Relationship between cam morphology, hip symptoms, and hip osteoarthritis: the Musculoskeletal pain in Ullersaker Study (MUST) cohort. *Hip Int* 2021;31:789–96.
- 36 Nelson AE, Stiller JL, Shi XA, *et al.* Measures of hip morphology are related to development of worsening radiographic hip osteoarthritis over 6 to 13 year follow-up: the Johnston County Osteoarthritis Project. *Osteoarthr Cartil* 2016;24:443–50.
- 37 Tang J, van Buuren MMA, Riedstra NS, *et al.* Cam morphology is strongly and consistently associated with development of radiographic hip osteoarthritis throughout 4 follow-up visits within 10 years. *Osteoarthr Cartil* 2023;31:1650–6.
- 38 Faber BG, Frysz M, Hartley AE, *et al.* A Genome-Wide Association Study Meta-Analysis of Alpha Angle Suggests Cam-Type Morphology May Be a Specific Feature of Hip Osteoarthritis in Older Adults. *Arthritis Rheumatol* 2023;75:900–9.
- 39 Kohn MD, Sassoon AA, Fernando ND. Classifications in Brief: Kellgren-Lawrence Classification of Osteoarthritis. *Clin Orthop Relat Res* 2016;474:1886–93.
- 40 Gamer M, Gamer MM, Robinson A, *et al.* Package 'irr'. 2012.
- 41 Altman RD, Gold GE. Atlas of individual radiographic features in osteoarthritis, revised. *Osteoarthr Cartil* 2007;15:A1–56.
- 42 Agricola R, Waarsing JH, Thomas GE, *et al.* Cam impingement: defining the presence of a cam deformity by the alpha angle: data from the CHECK cohort and Chingford cohort. *Osteoarthr Cartil* 2014;22:218–25.
- 43 Scholes MJ, Kemp JL, Mentiplay BF, *et al.* Are cam morphology size and location associated with self-reported burden in football players with FAI syndrome? *Scand J Med Sci Sports* 2022;32:737–53.
- 44 Lanyon P, Muir K, Doherty S, *et al.* Age and sex differences in hip joint space among asymptomatic subjects without structural change: Implications for epidemiologic studies. *Arthritis & Rheumatism* 2003;48:1041–6.
- 45 King LK, March L, Anandacoomarasamy A. Obesity & osteoarthritis. *Indian J Med Res* 2013;138:185–93.
- 46 Wang C, Zhu Y, Liu Z, *et al.* Causal associations of obesity related anthropometric indicators and body compositions with knee and hip arthritis: A large-scale genetic correlation study. *Front Endocrinol* 2022;13:1011896.
- 47 Funck-Brentano T, Nethander M, Movérare-Skrtic S, *et al.* Causal Factors for Knee, Hip, and Hand Osteoarthritis: A Mendelian Randomization Study in the UK Biobank. *Arthritis Rheumatol* 2019;71:1634–41.
- 48 Badley EM, Zahid S, Willfong JM, *et al.* Relationship Between Body Mass Index and Osteoarthritis for Single and Multisite Osteoarthritis of the Hand, Hip, or Knee: Findings From a Canadian Longitudinal Study on Aging. *Arthritis Care & Research* 2022;74:1879–87.
- 49 Yuan J, Wang D, Zhang Y, *et al.* Genetically predicted obesity and risk of hip osteoarthritis. *Eat Weight Disord* 2023;28:11.
- 50 Batushansky A, Zhu S, Komaravolu RK, *et al.* Fundamentals of OA. An initiative of Osteoarthritis and Cartilage. Obesity and metabolic factors in OA. *Osteoarthr Cartil* 2022;30:501–15.
- 51 Bugeja JM, Xia Y, Chandra SS, *et al.* Analysis of cam location characteristics in FAI syndrome patients from 3D MR images demonstrates sex-specific differences. *J Orthop Res* 2024;42:385–94.