



# Haralds Haven



stress  
33%



anxiety  
16.8%



loneliness  
9.6%



mental health  
19.9%



GREENERY BY FUNCTION



EXISTING WATER FEATURES



GATHERING SPACES



PLAY OPPORTUNITIES



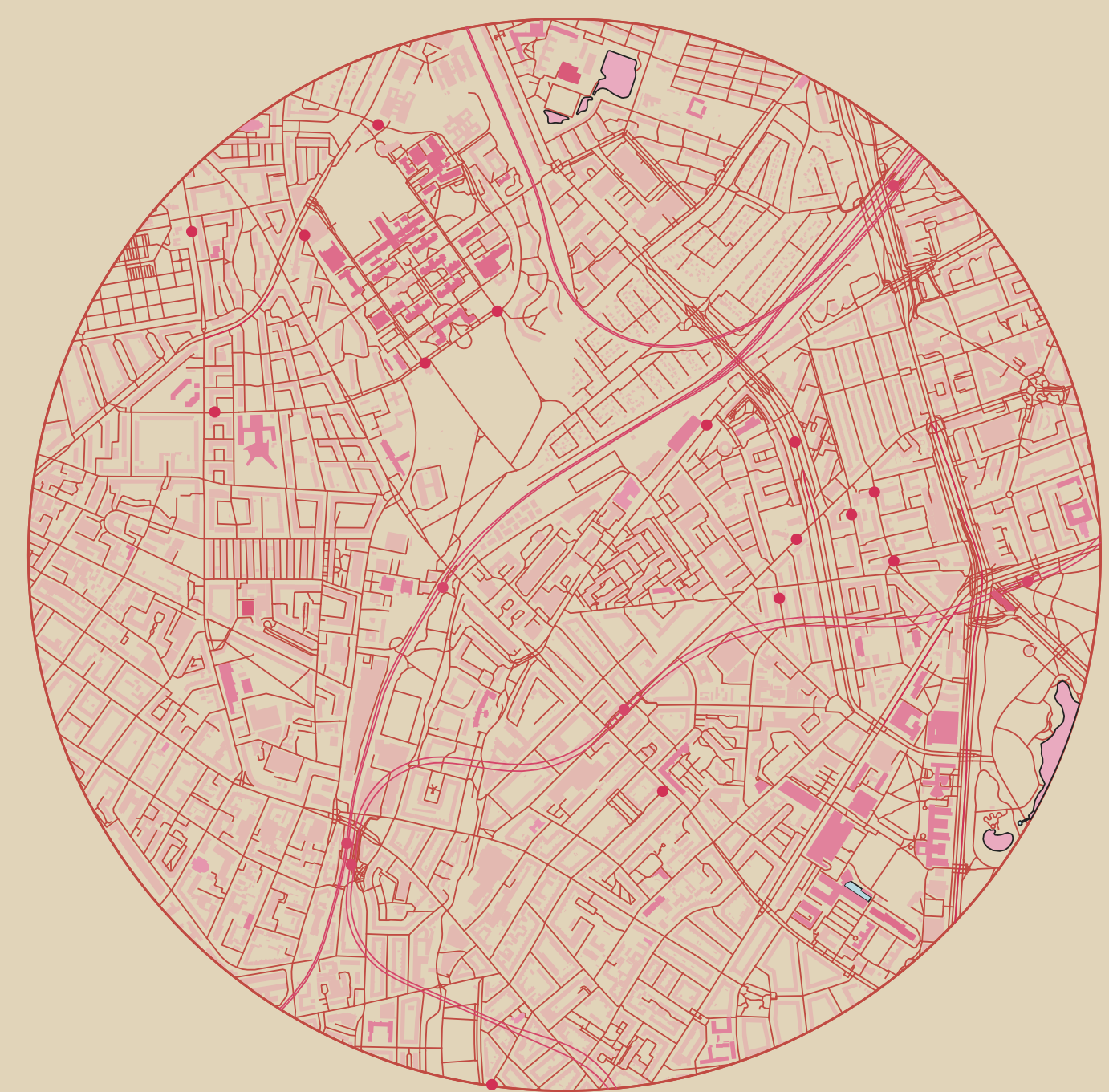
ACTIVE PUBLIC SPACES



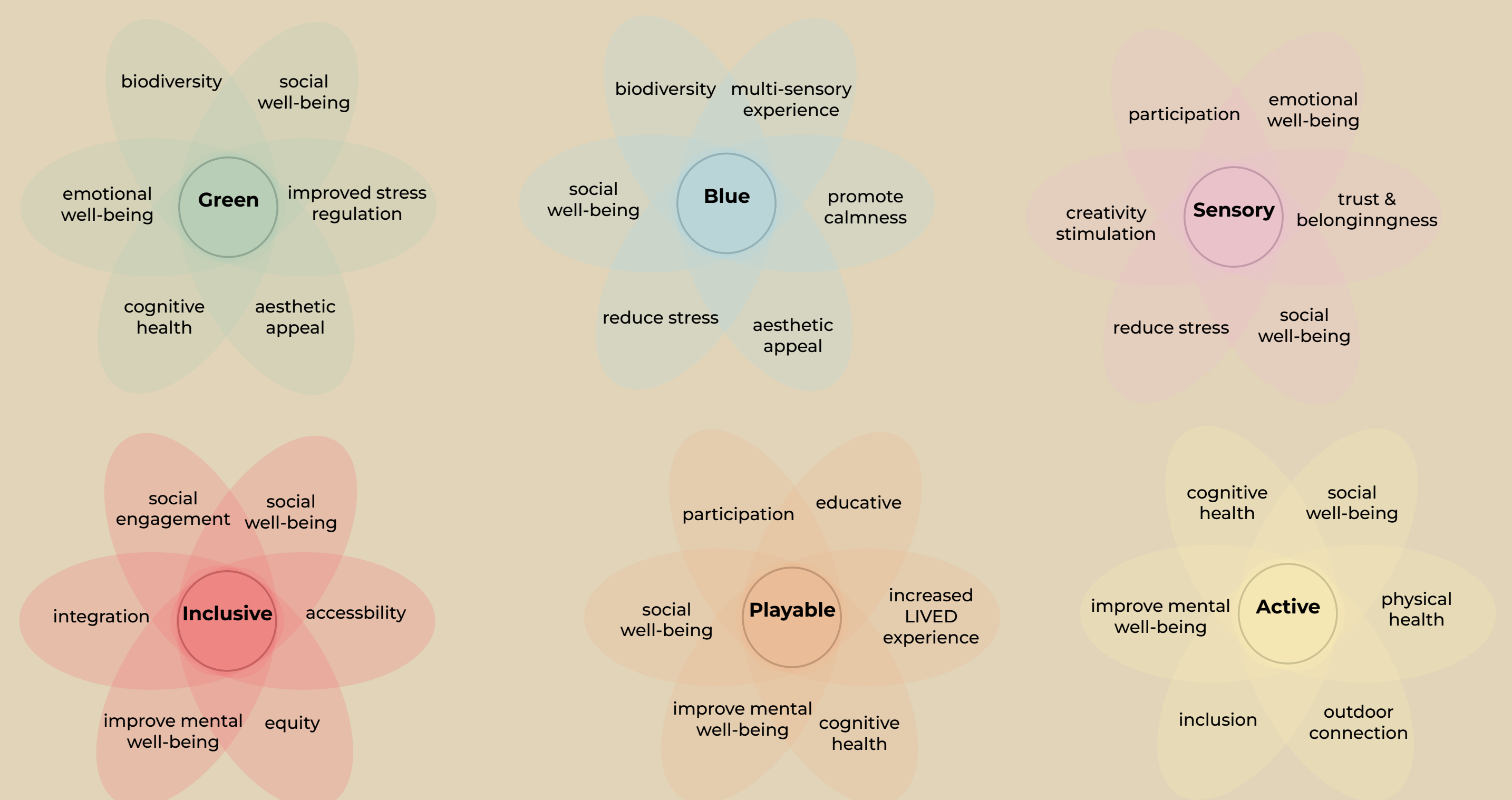
ACCESSIBILITY & CONNECTIVITY



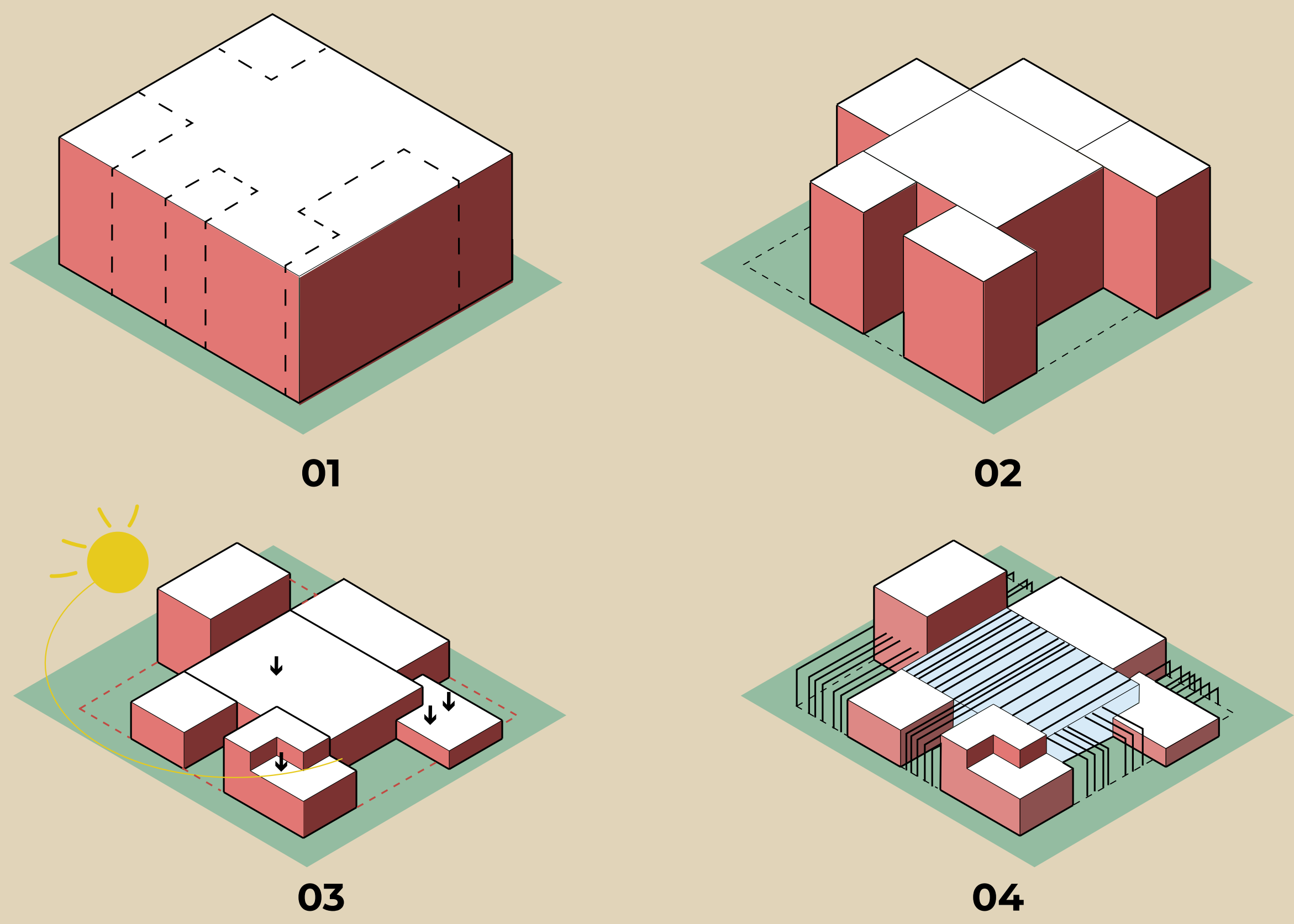
SMELLSCAPES



SOUNDSCAPES







### A Public Building for Everyday Well-being

In a world that often demands speed, performance, and constant presence, the Restorative Condenser offers something rare: a space to slow down and simply feel well. This public building is designed as a gentle environment where mental well-being is not treated as a luxury, but as a shared, everyday need. It blends six key themes - Green, Blue, Sensory, Active, Playable, and Inclusive - into a cohesive experience that supports rest, movement, connection, and discovery.

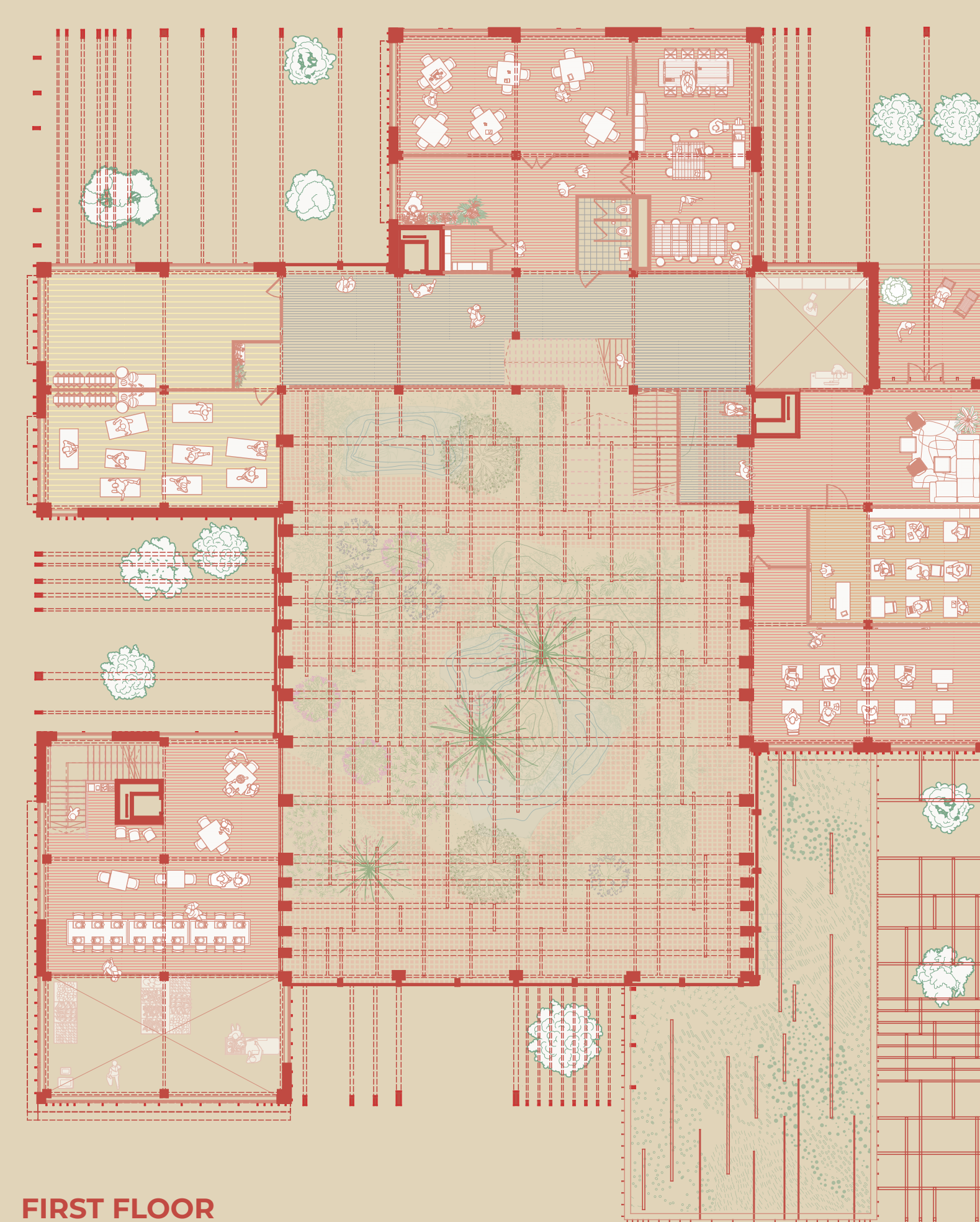
Whether you're passing through the garden, pausing by the water, playing

in the courtyard, or finding focus in a quiet corner, every space invites a sense of ease. Natural textures, soft transitions, and a thoughtful layout create moments that feel intuitive and human. The architecture doesn't shout - it listens. It adapts to the rhythm of the neighborhood and grows with its people.

This is not just a building. It's a framework for feeling better, for being together, and for reconnecting with yourself and the world around you - on your own terms.



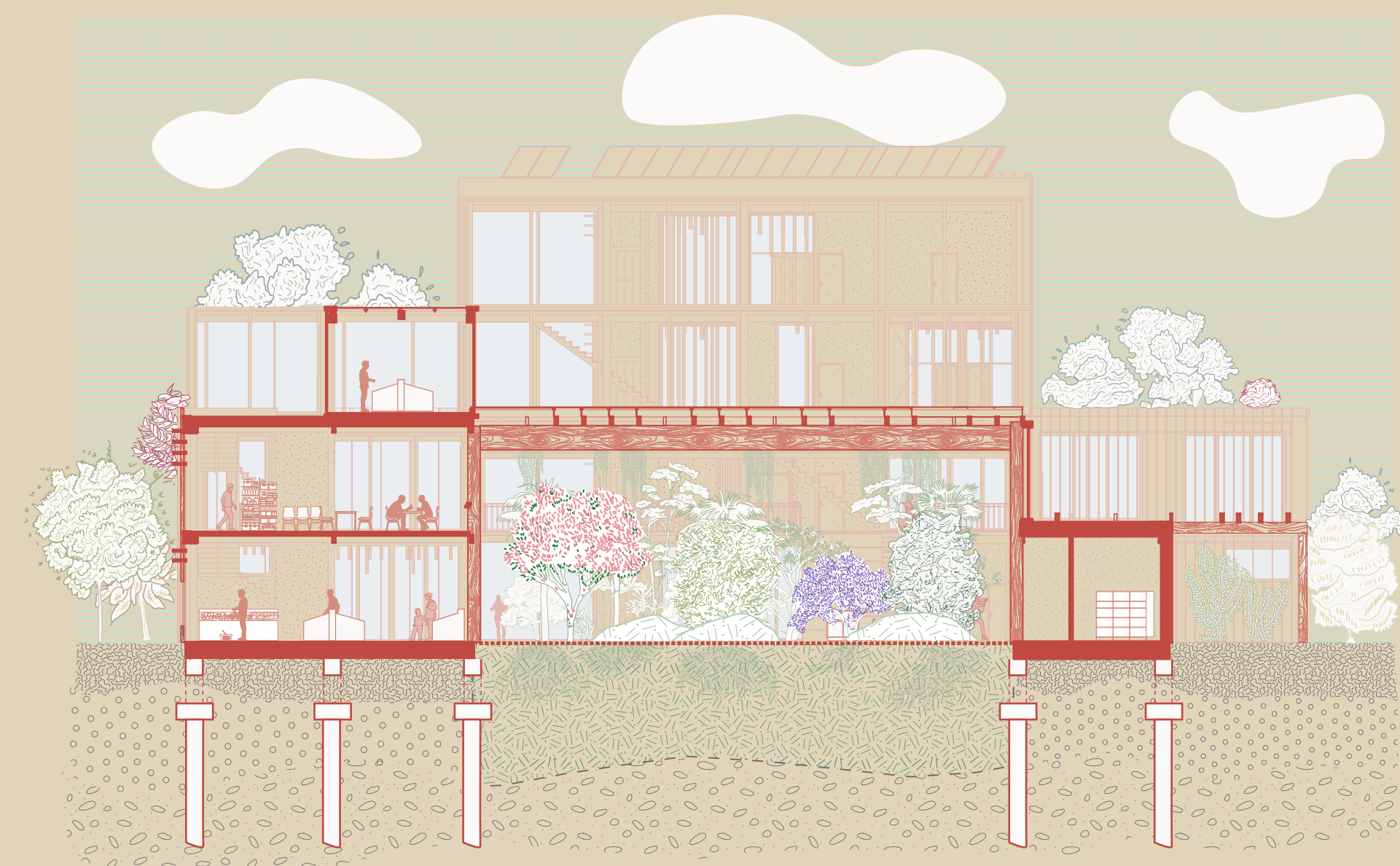
GROUND FLOOR



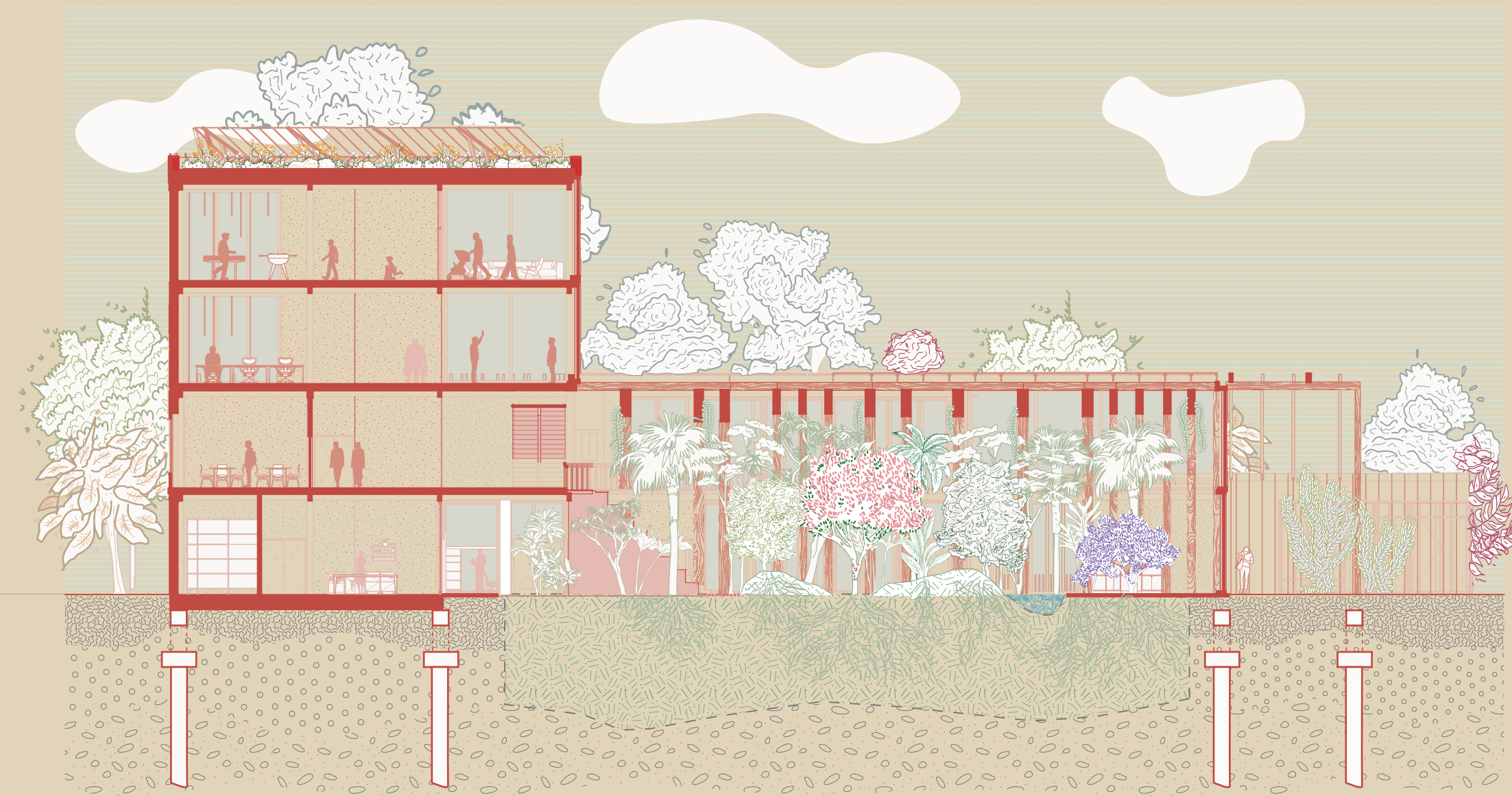
FIRST FLOOR



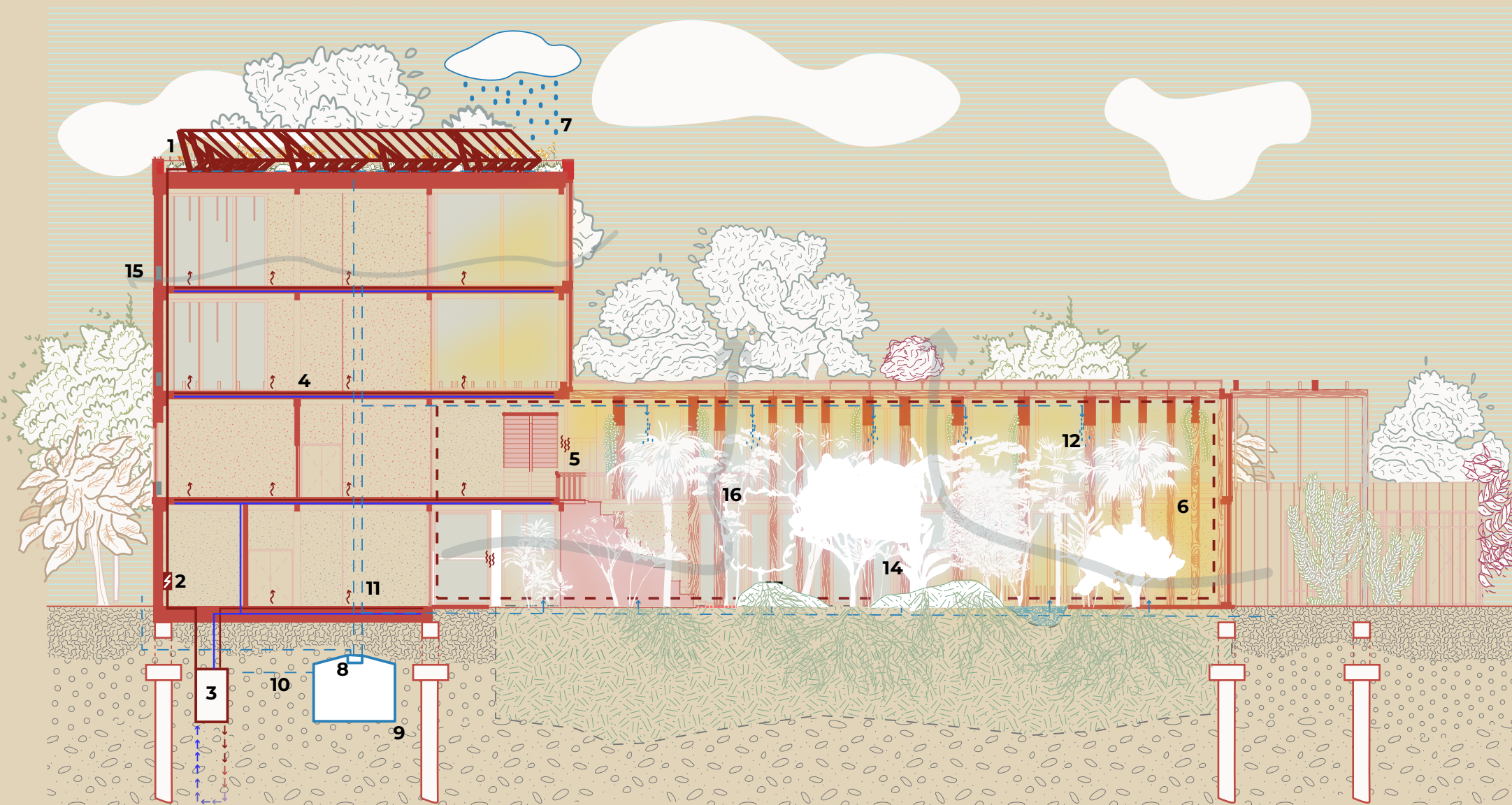




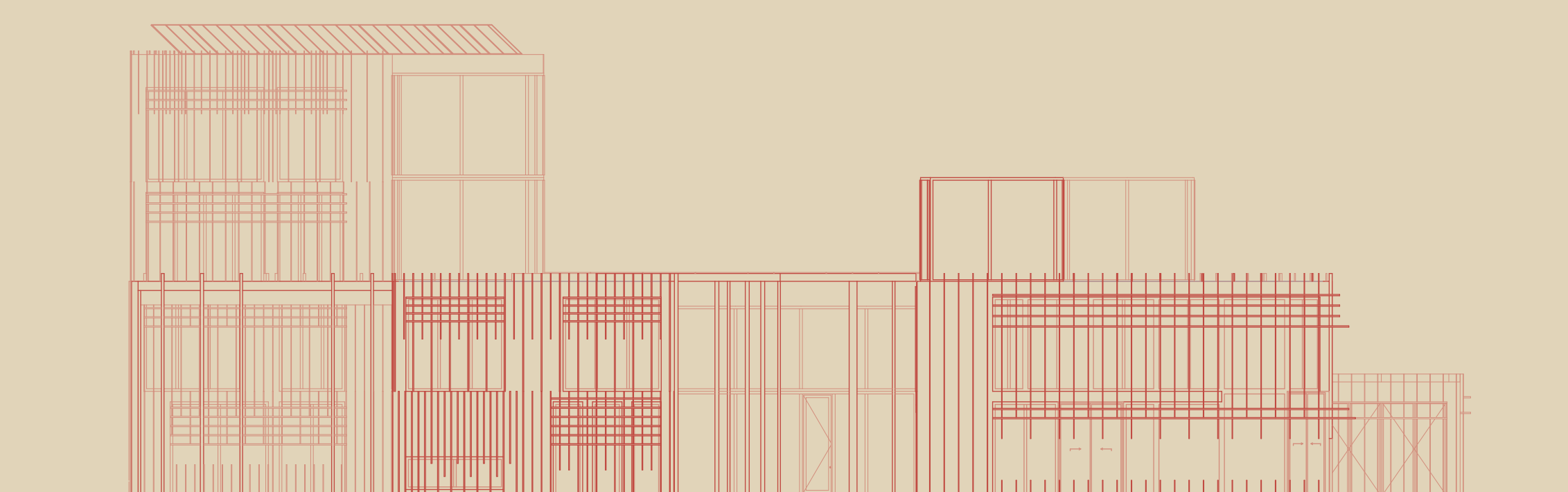
SECTION AA



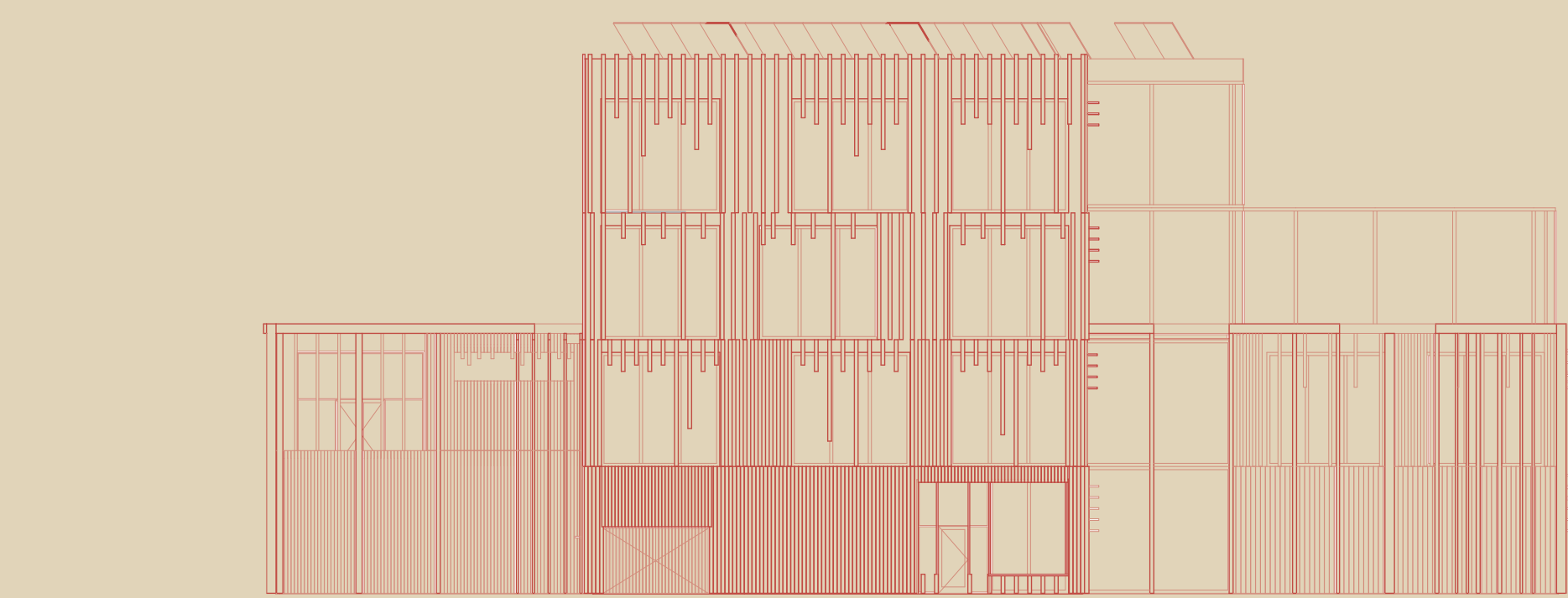
SECTION BB



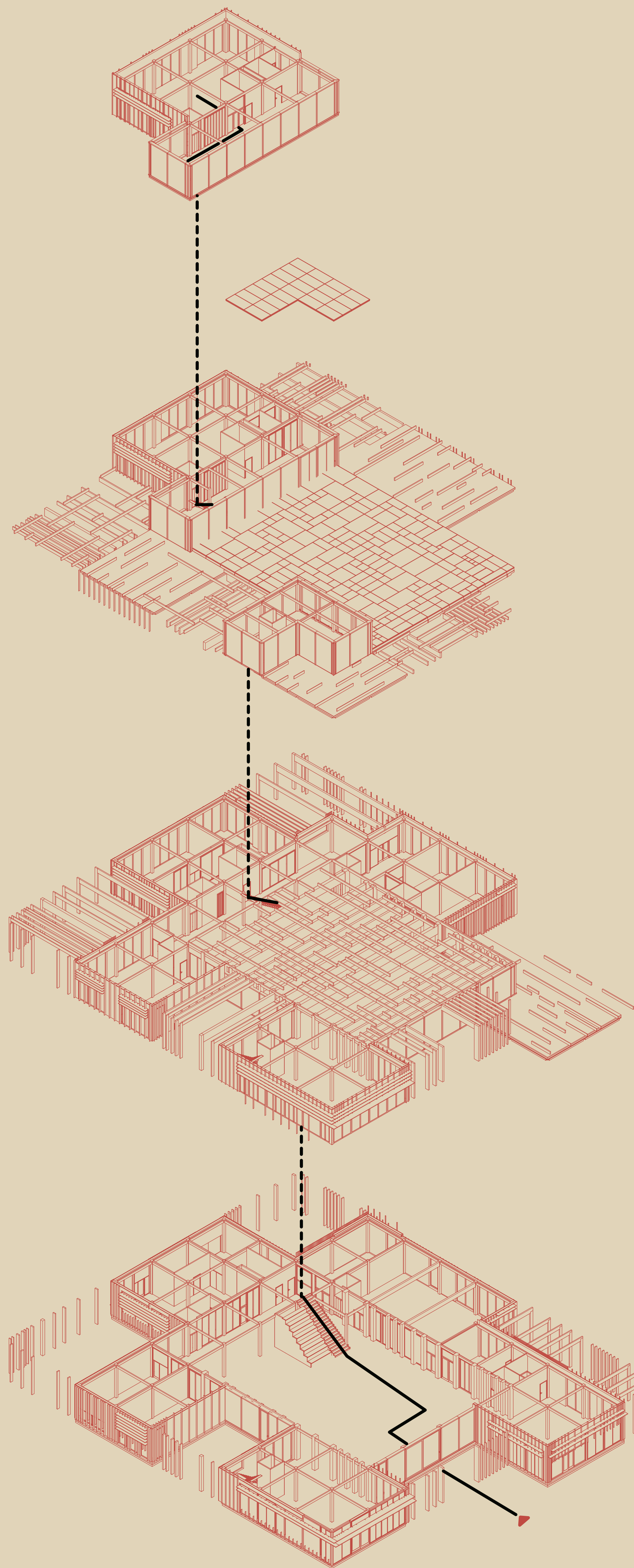
CLIMATE SECTION



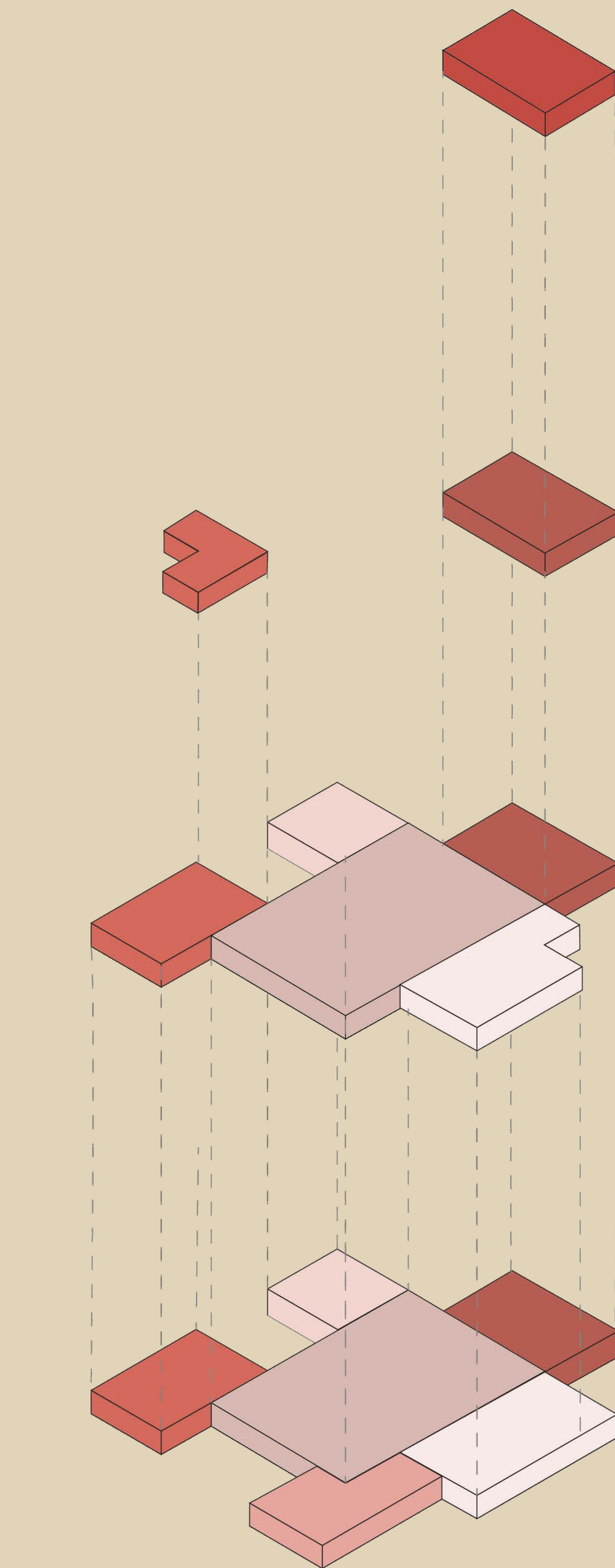
SOUTH-WEST ELEVATION



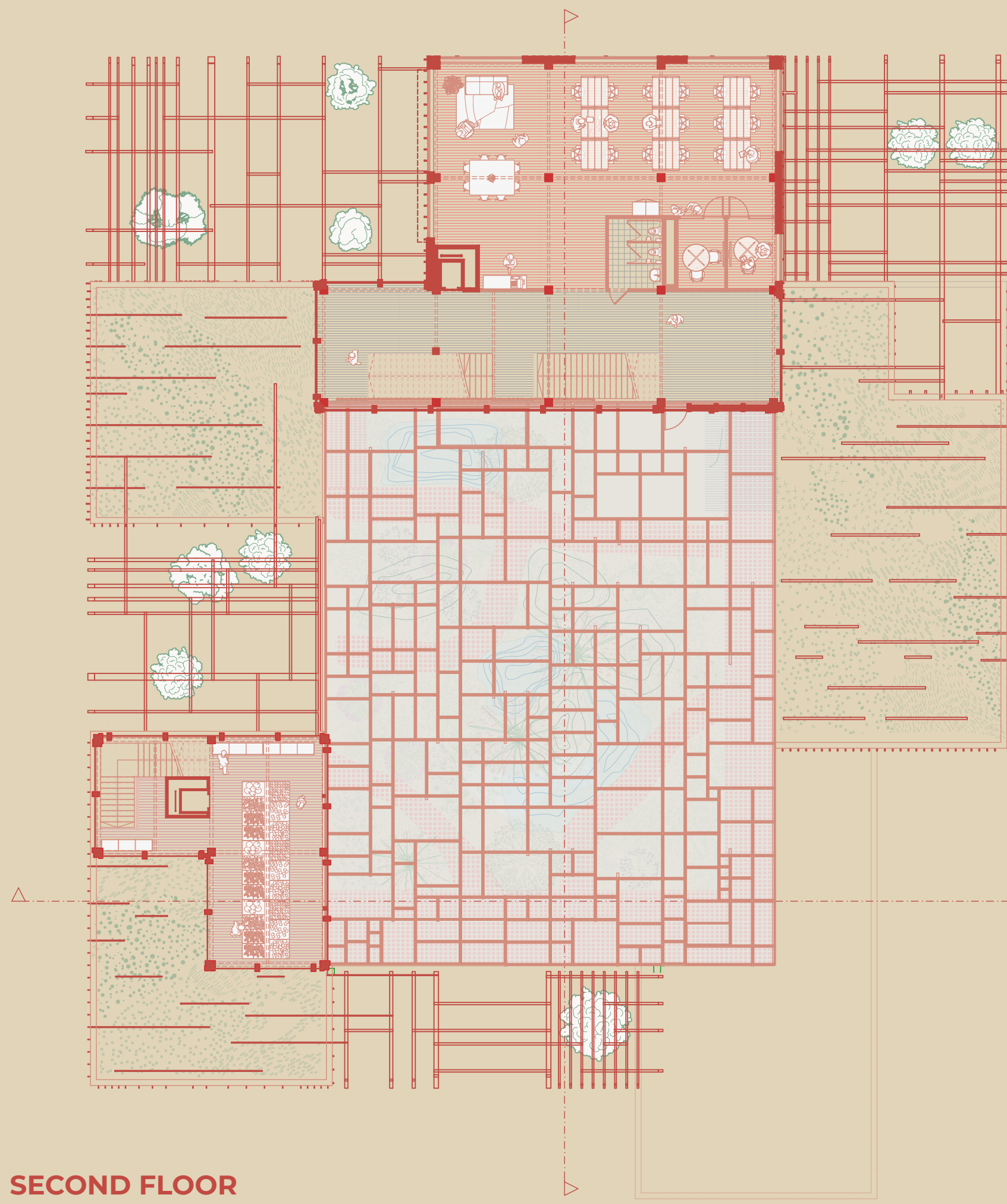
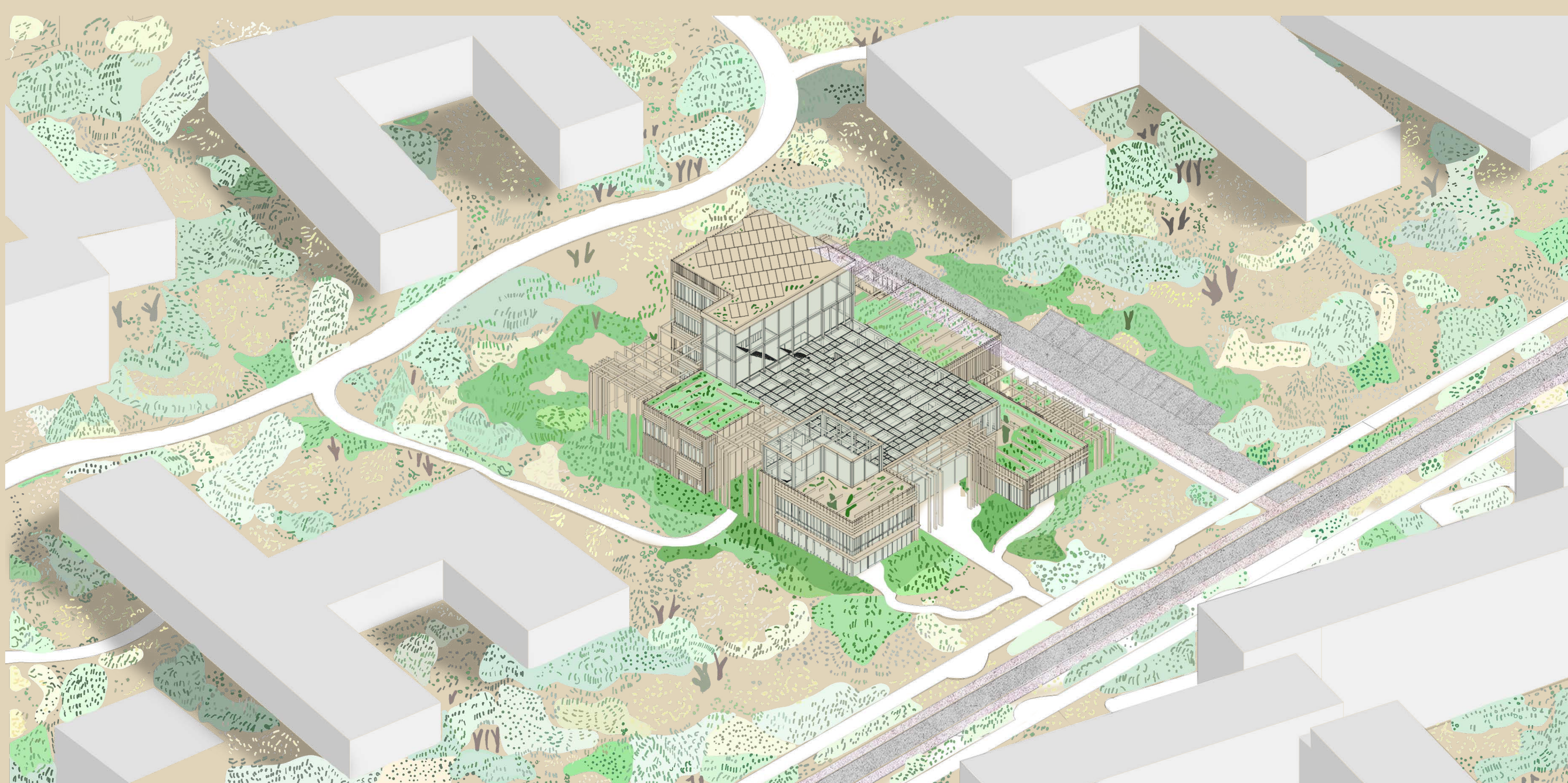
NORTH-WEST ELEVATION



CIRCULATION DIAGRAM



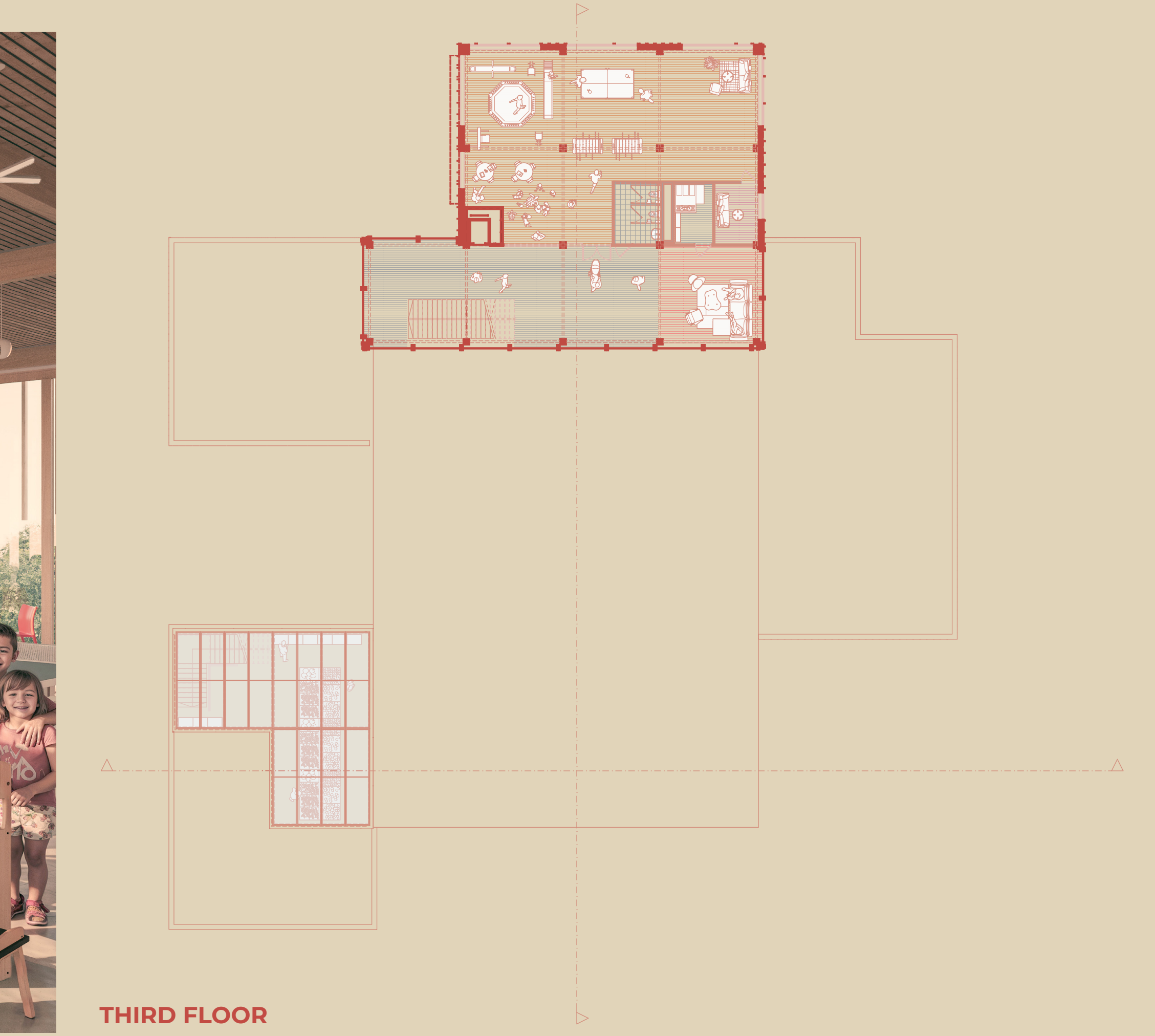
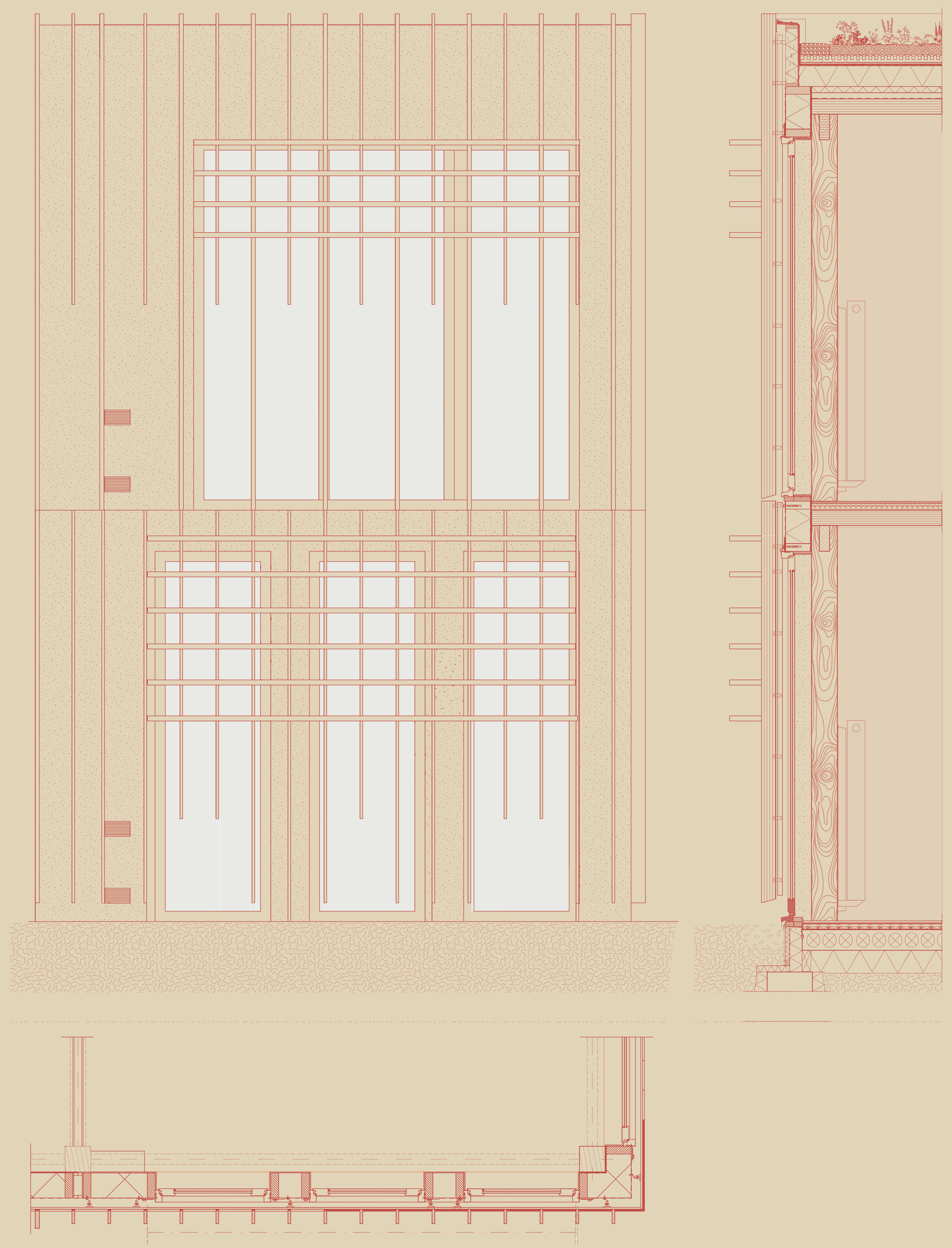
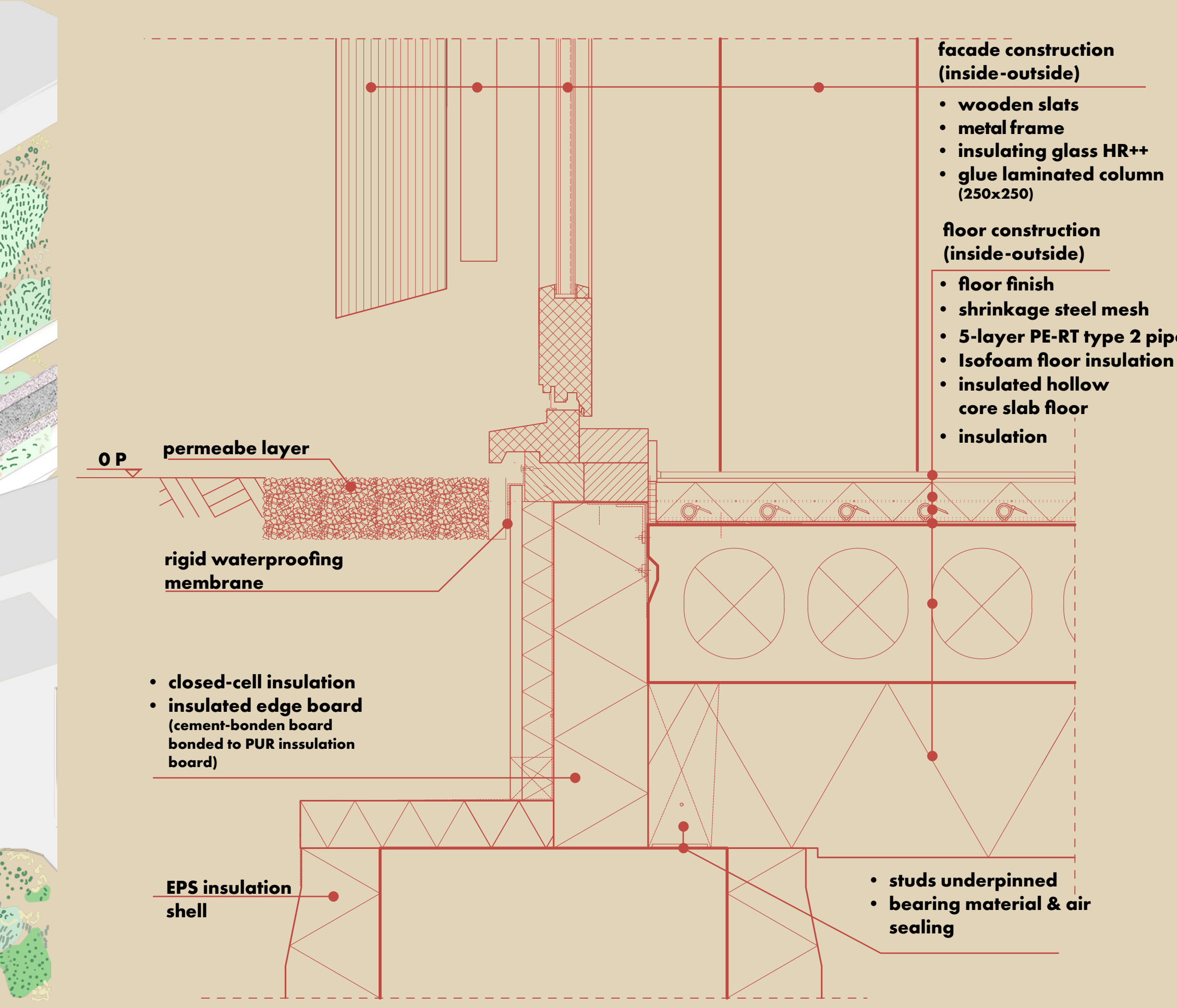
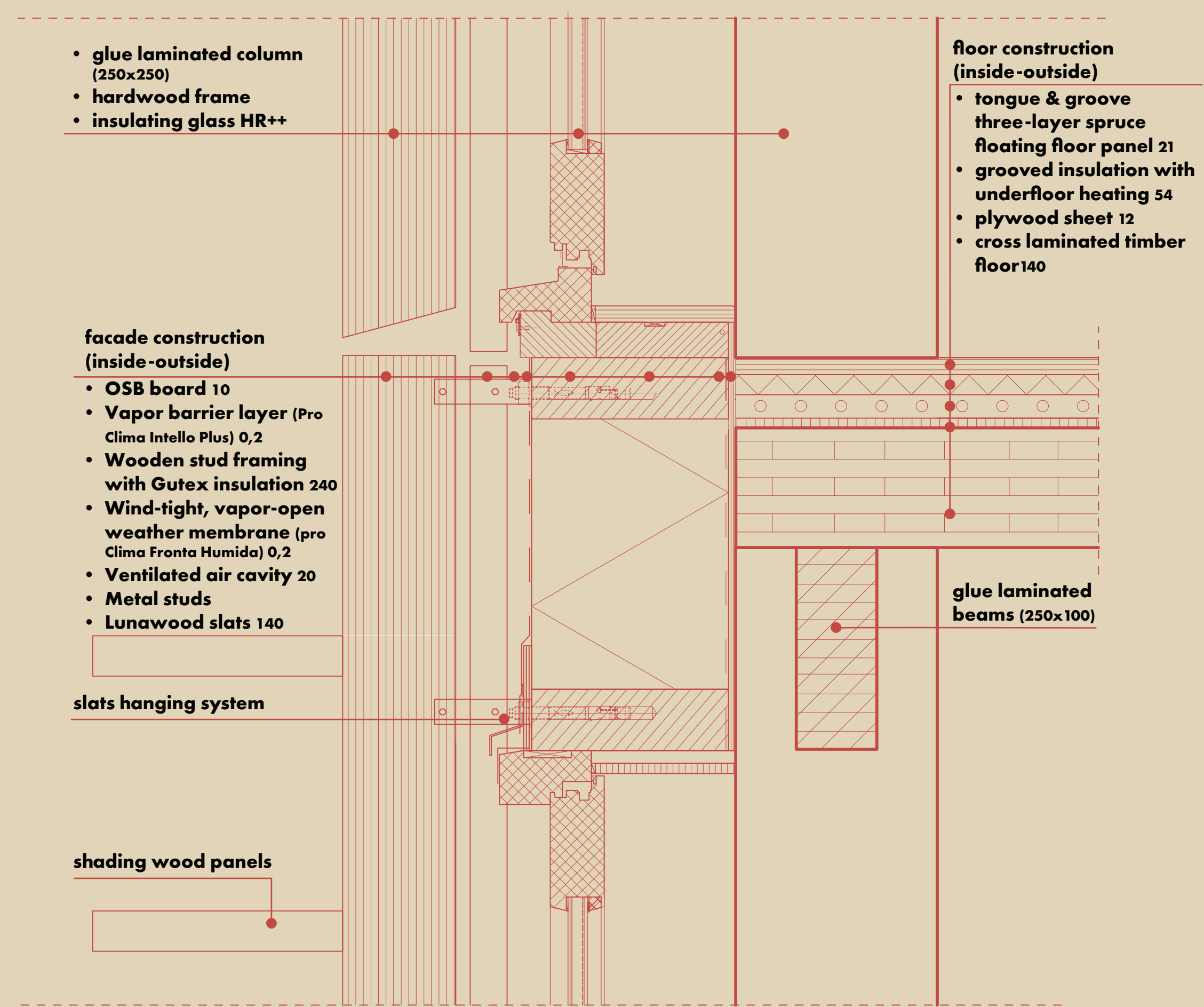
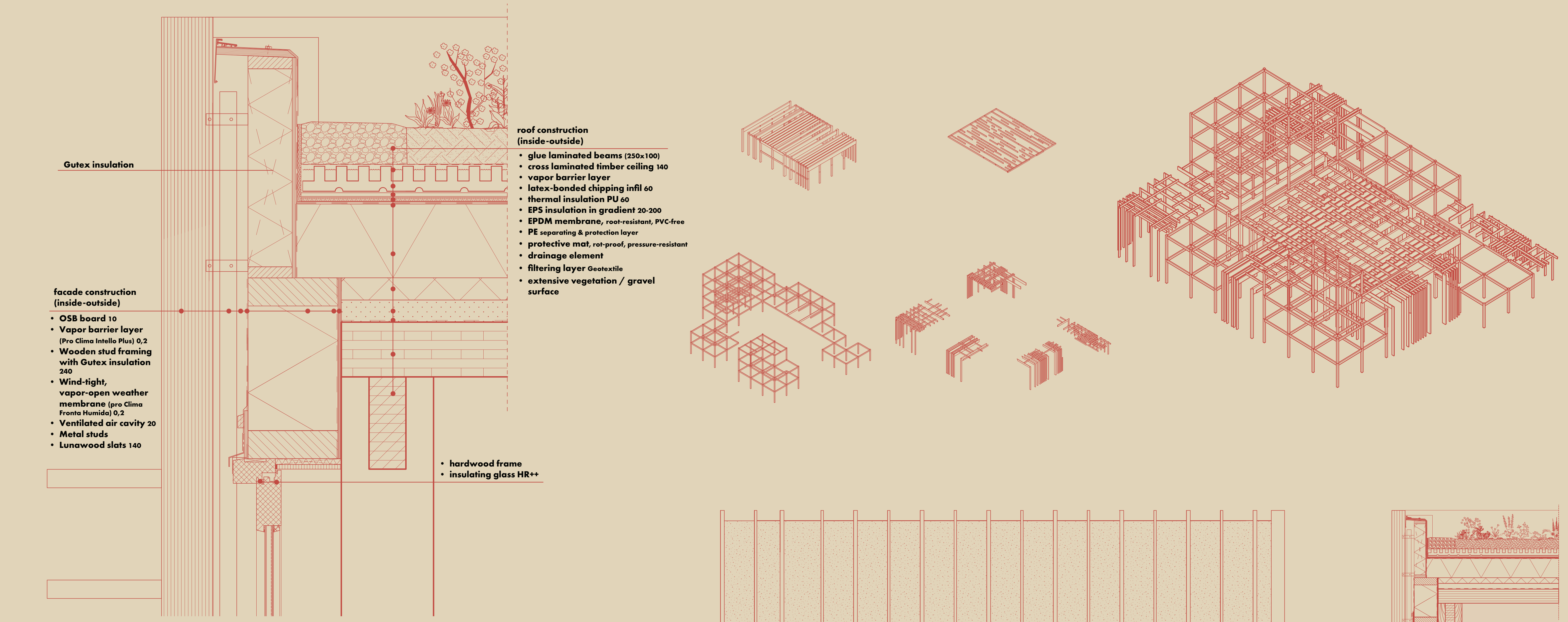
- Cafe
- Community food hub
- Garden
- Wellness
- Education
- Business Hub
- Playzone



SECOND FLOOR









### THIRD FLOOR

#### SENSORY

The playground features soft flooring, creating a safe and tactile surface suitable for children's movement and sensory exploration

#### PLAYABLE

The indoor playground includes four distinct zones tailored to different age groups, encouraging inclusive play

Modular furniture in seating areas invites rearrangement and playful exploration, encouraging creativity and adaptability

#### ACTIVE

The playground is located on the top floor to motivate children and families to take the stairs.

It features four zones, including two active areas designed for running and energetic play.

### SECOND FLOOR

#### SENSORY

Allowing visitors to grow their own food fosters a sense of belonging and personal connection, turning the space into a shared 'home'

The green house acts as a smellscape

Clear zoning ensures each block has a distinct function, making wayfinding intuitive

#### ACTIVE

The staircase is placed visibly before the lift, designed as a continuous line with each floor as a pause point to encourage active use

The greenhouse encourages physical activity through hands-on farming, promoting movement and a healthy lifestyle as part of daily life

### FIRST FLOOR

#### SENSORY

Rain on the full-glass atrium roof creates a soothing acoustic experience

Clear zoning ensures each block has a distinct function, making wayfinding intuitive

The community kitchen fosters social bonds through shared food and cultural connection & it acts as a smellscape

Natural light enters each space uniquely, shaped by the building's structure and façade

#### PLAYABLE

Workshop and studio spaces can easily transform into playful, interactive environments

Modular furniture in seating areas invites rearrangement and playful exploration, encouraging creativity and adaptability

#### ACTIVE

The studio rooms hosts a variety of classes to increase usage and community participation

A balcony space is available and can be used for exercise or outdoor activities

### GROUND FLOOR

#### SENSORY

The atrium and outdoor areas act as a natural soundscape

Rain on the full-glass atrium roof creates a calming, acoustic

Symmetrical form, small scale, and unified design support mental well-being for users and passers-by

The building's modest size integrates harmoniously into the neighborhood and its natural setting

Clear zoning: each block serves a specific function, making navigation intuitive

The café and market reflect cultural identity and belonging through food and shared experiences

Façade variation reduces stress and visual boredom for both users and onlookers  
The active public frontage (café & market) invites lingering and social interaction

Textured surfaces in the atrium and semi-outdoor spaces soften the environment and reduce visual monotony

Natural light filters differently into each room through the structural and façade design  
Scent-rich spaces (gardens, café, market) enhance emotional connection and curiosity

Tactile pathways, plantings, and gentle scents in the atrium support mental restoration

The entire building delivers a rich multi-sensory experience, highlighted by a dedicated sensory room

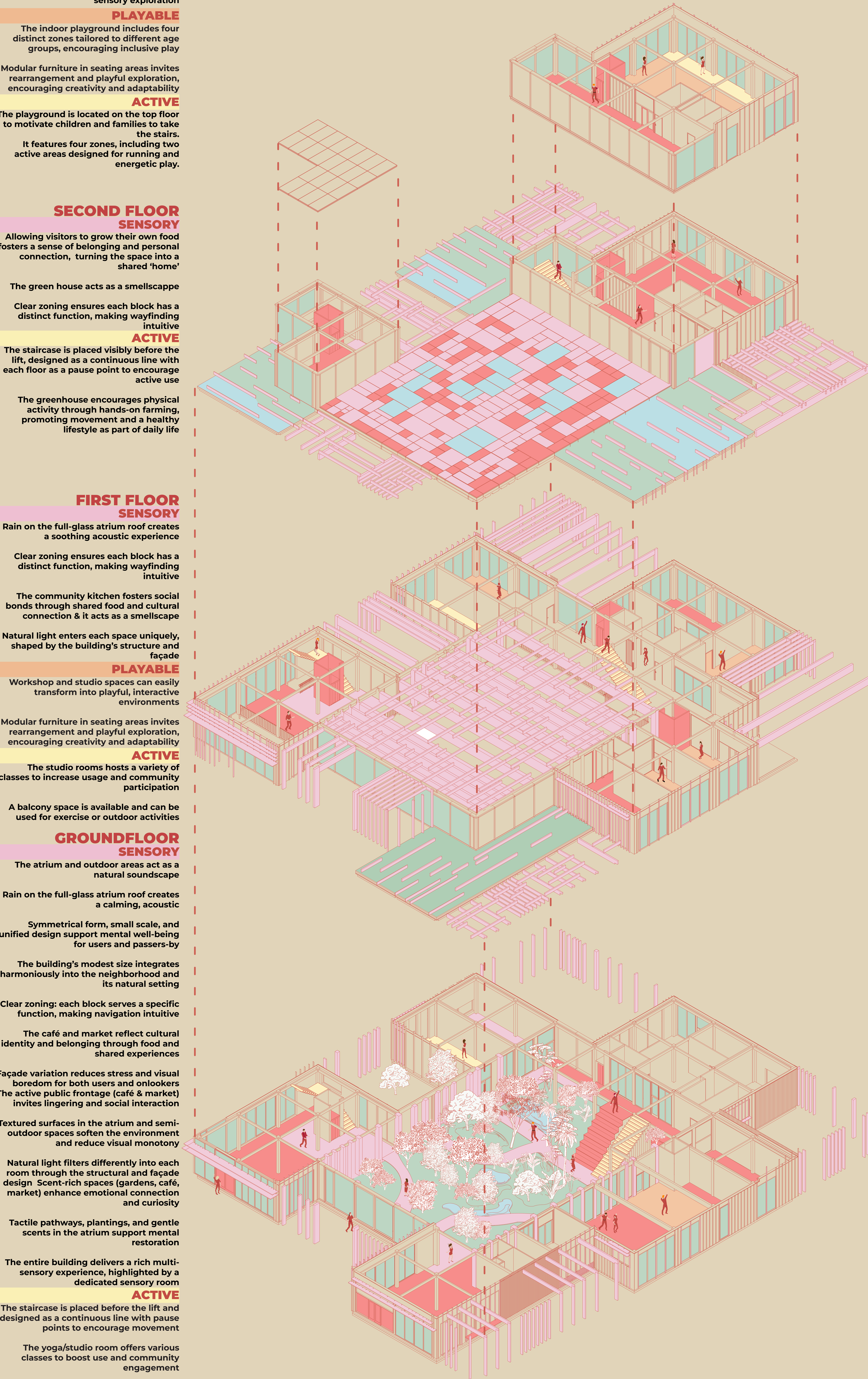
#### ACTIVE

The staircase is placed before the lift and designed as a continuous line with pause points to encourage movement

The yoga/studio room offers various classes to boost use and community engagement

The building is accessible by foot or bike only, promoting healthy movement  
A single pathway from entrance to stairs encourages spontaneous social encounters

Semi-open hubs serve as exercise zones with regular outdoor classes



### THIRD FLOOR

#### GREEN

Visual access to nature in all the spaces

All the roofs are fully for non-human occupants. Which enhances biodiversity, improves air quality & provide visual relief

#### BLUE

The green roofs helps with water retention during heavy rain

#### INCLUSIVE

The indoor playground offers a safe, weatherproof area for children to play, with a nearby lounge where parents can relax and connect

Quiet room provides solitude and supports stress recovery

Participatory features engage all age groups and interests

### SECOND FLOOR

#### GREEN

Visual access to nature in all the spaces

All the roofs are fully for non-human occupants. Which enhances biodiversity, improves air quality & provide visual relief

#### BLUE

The green roofs helps with water retention during heavy rain

#### INCLUSIVE

A greenhouse is available for those who wish to grow their own fruits, vegetables, and herbs

Participatory elements are designed for all age groups and interests,

encouraging hands-on engagement  
Workspaces and private meeting rooms provide areas for focused work and collaboration

### FIRST FLOOR

#### GREEN

Every space offers direct visual access to greenery and natural elements

All rooftops are dedicated to non-human life, supporting biodiversity, purifying the air, and offering calming views

#### BLUE

Green roofs retain rainwater during heavy downpours, reducing runoff and aiding sustainable water management

#### INCLUSIVE

Studio and workshop areas serve as participatory zones, fostering a hands-on, creative environment

The education hub offers a cozy setting for teenagers to connect, relax, and study

Every space benefits from direct natural sunlight, supporting comfort and focus

### GROUND FLOOR

#### GREEN

Serene natural environment

Over 30% green coverage in the atrium and surrounding areas

Visual connection to nature from every interior space

Rich biodiversity with 4 indoor gardens and native Danish trees outdoors

Climate-adaptive design: reduces heat stress, offers shade, protects from heavy rain, and ensures year-round comfort

All roofs are dedicated to non-human life, enhancing biodiversity, improving air quality, and offering visual tranquility

#### BLUE

Reflection ponds in the atrium enhance visual calm and sensory experience, while also supporting biodiversity by offering shelter to various species

Outdoor green spaces absorb heavy rainfall, reducing runoff and adding usable, resilient landscape zones

#### INCLUSIVE

A quiet room offers solitude and supports stress recovery for those seeking calm

Participatory elements engage people of all ages and interests

Most spaces are flexible and adapt to different uses across day, night, and weekends

All interior spaces receive direct natural daylight

Dedicated areas for workshops and lectures foster creativity, art, and design

#### PLAYABLE

Outdoor playground encourages active play and social interaction for younger users

Studio spaces can transform into playful workshops that build connection through creativity

Dynamic light penetration throughout the building becomes a playful, ever-changing design feature that inspires imagination



## A Orientation:

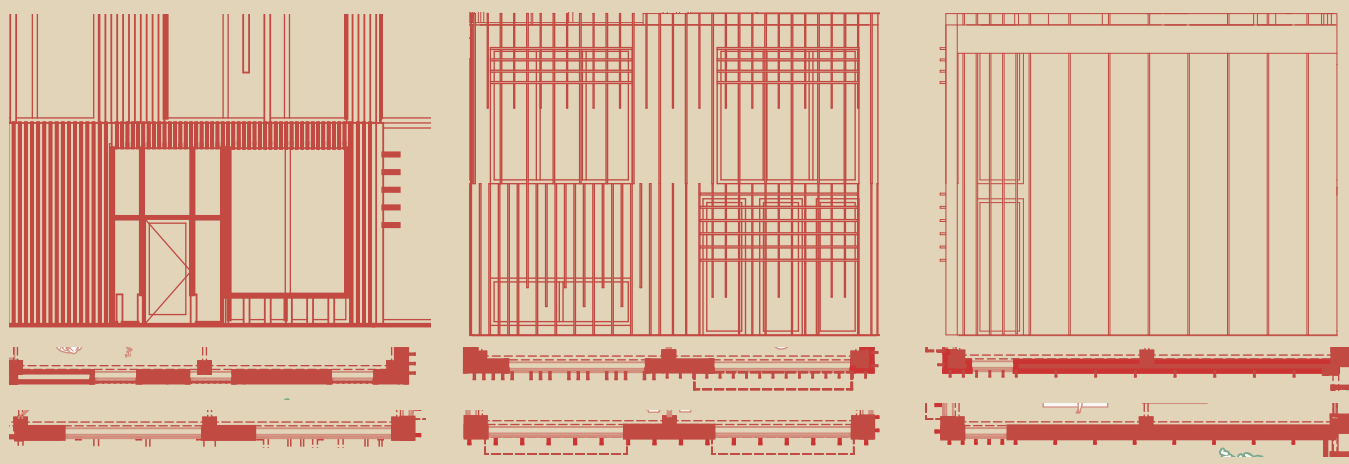
- Facing: Almost true South
- Azimuth: ~170°-175°
- Summer sun altitude ≈ 65°-70° at midday
- Winter sun altitude ≈ 15°-25° at midday
- This is the best possible orientation for passive solar performance.

### Sun exposure:

- Summer (June 21)**
- Sunrise: 4:30 AM (Northeast)
  - Midday sun: Hits directly from above, (60°-70°)
  - Direct sun time: 10:00-15:00
  - Challenge: High-angle light can cause overheating & glare

### Winter (Dec 21)

- Sunrise: ~8:30 AM (Southeast)
- Low sun angle: ~15°-25°
- Direct sun time: ~10:00-14:30
- Advantage: Low-angle sun penetrates deep - ideal for passive heating



### C1

**Sun context**  
Mostly in shadow for most of the day

Late afternoon summer sun (17:00-21:00) enters at a low angle (~20-30°)

Light is soft but can cause long horizontal glare if not filtered

Winter sun: almost no direct exposure — mostly ambient daylight

**00 Sensory room**  
**Concept:** enclosed, private & immersive

**Window/s:** none

**mood:** Enclosed, private, focused - supports sensory isolation

Horizontal slats start at	none
vertical slats	very dense 188x19 spacing is 193
Result	No light, dense & private

### 01 Studio

**Window/s:** Large windows

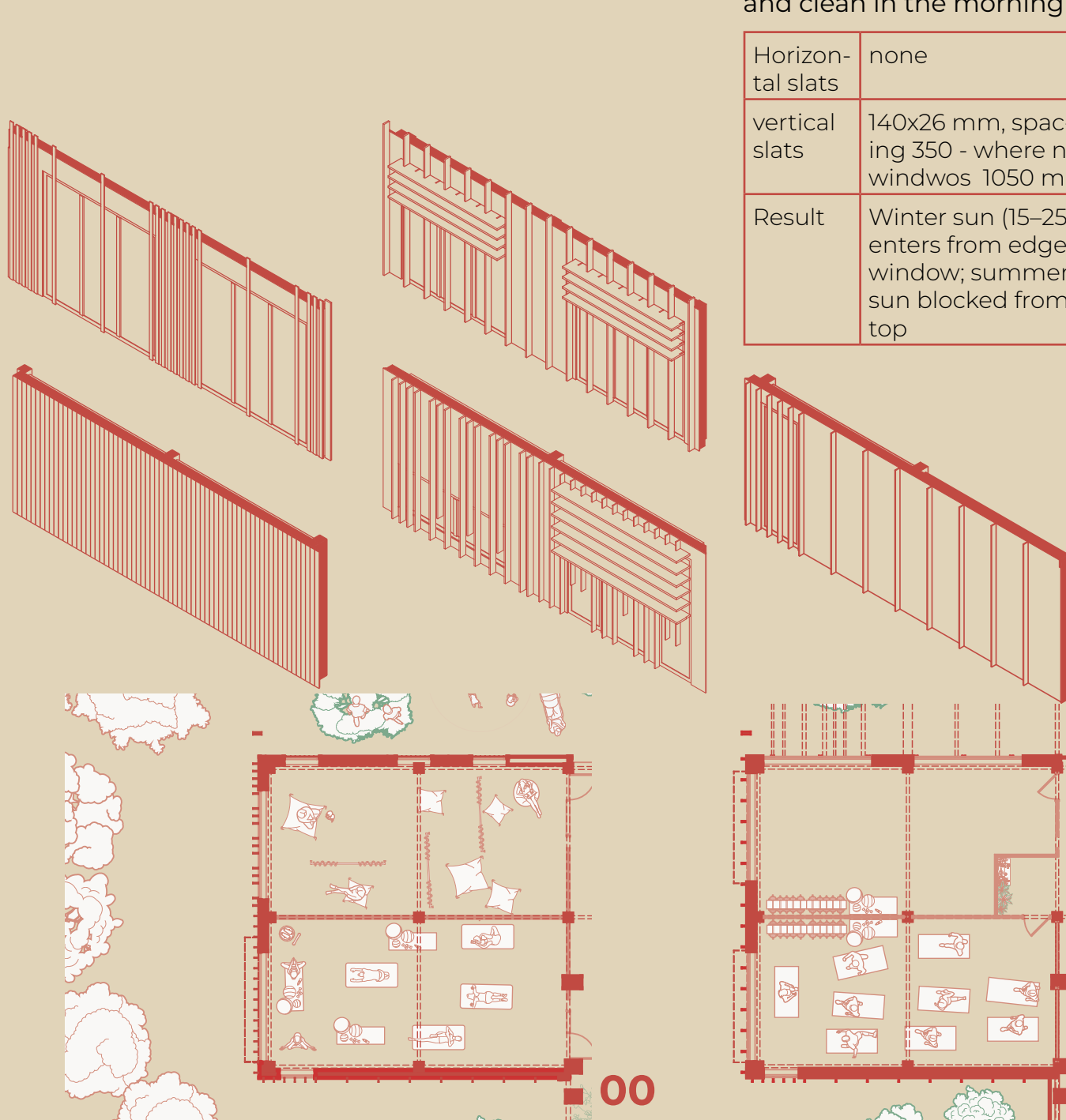
**mood:** Dynamic, open, warm in afternoon; calm and clean in the morning-feels active

Horizontal slats	none
vertical slats	42 mm x 68 mm / spacing: 800 mm and 256 where there are not any windows
Result	Play with staggered slat heights if view is to play-ground — feels active

**01 Studios**  
**Window/s:** Large glazing 3600x3750 for maximum view

**mood:** Dynamic, open, warm in afternoon; calm and clean in the morning

vertical slats	deep slats 40x185 & thinner ones 26x140 starting at 2m for more shadow
result	the vertical rhythm is casting soft patterns and shift mood with daylight
Horizontal slats	450x50 space 300 starting at 2.7 m slats
Result	Control glare while keeping natural brightness



## B

### Orientation:

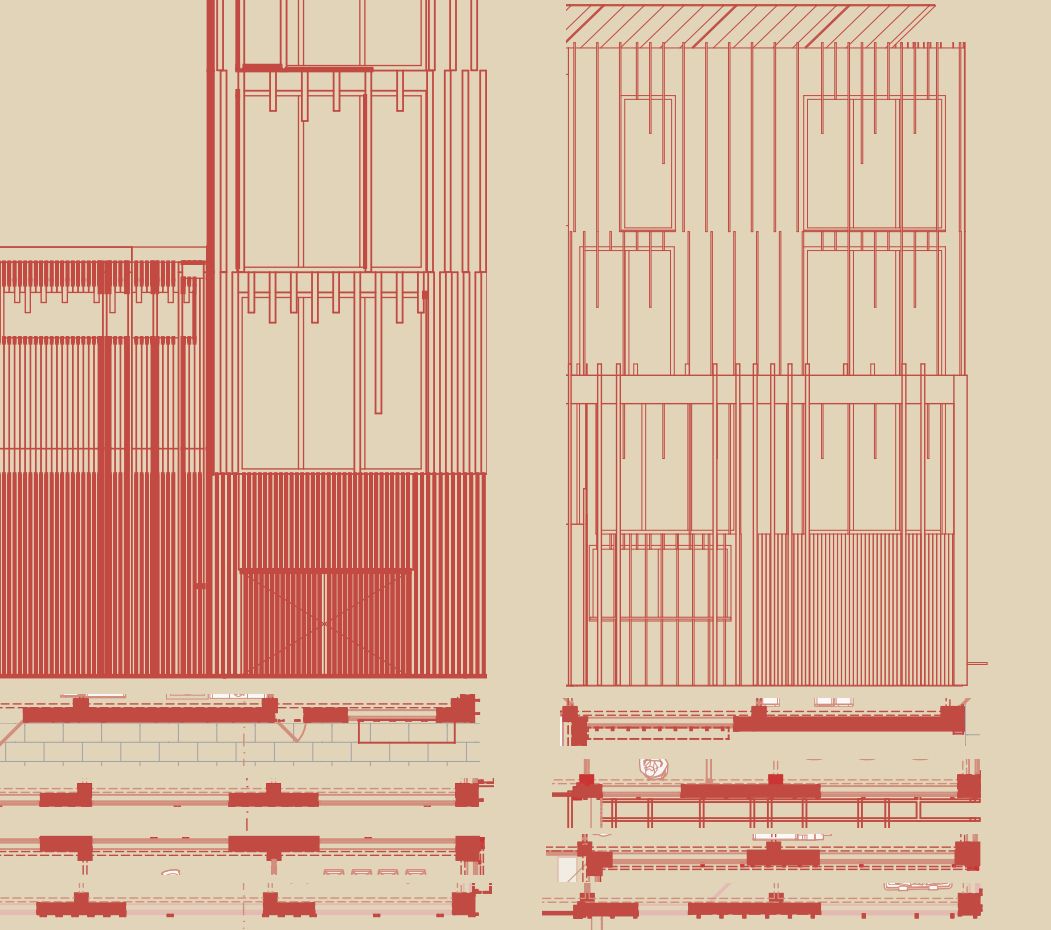
- Facing: Roughly West
- Azimuth: ~310°-320°
- Summer sun altitude ≈ 50°-60° (late afternoon)
- Winter sun altitude ≈ 10°-15° (very low)
- Key Feature: Receives intense low-angle sun from mid to late afternoon

### Sun exposure:

- Summer (June 21)**
- Sunrise: ~4:30 AM (Northeast)
  - Direct sun time: ~14:00-21:00
  - Sun angle at 17:00: ~25°-35°
  - Challenge: Harsh, glancing light and potential overheating in afternoon

### Winter (Dec 21)

- Direct sun time: ~13:30-15:30
- Sun angle: Extremely low (5°-15°)
- Challenge: Limited daylight, mostly reflected ambient light



### C2

**00 Office**  
**Concept:** Calm, green

**Window/s:** full height (3600 mm) with light filtering

**mood:** Comfortable work zone, green view

Horizontal slats	at 600 as a seat
vertical slats	dense 188x22 and 193 mm spacing
Result	maximum light for the office space

**00 Technical room & storage**  
**Concept:** private

**Window/s:** none

Horizontal slats	none
vertical slats	Dense verticals: 100x22 mm, 107 mm spacing
Result	closed- maximum privacy

**00 mood:** functional, private

Horizontal slats	none
vertical slats	dense 188x22 and 193 mm spacing
Result	maximum privacy

**01 Workshop space**  
**Window/s:** full height (3600 mm) with light filtering

**mood:** bright & active

Horizontal slats	none
vertical slats	19x117 mm, spacing 315 mm (rhythmic pattern)
Result	Balanced between open and work-focus

**02 CO-working space**  
**Window/s:** full height (3600 mm) with light filtering

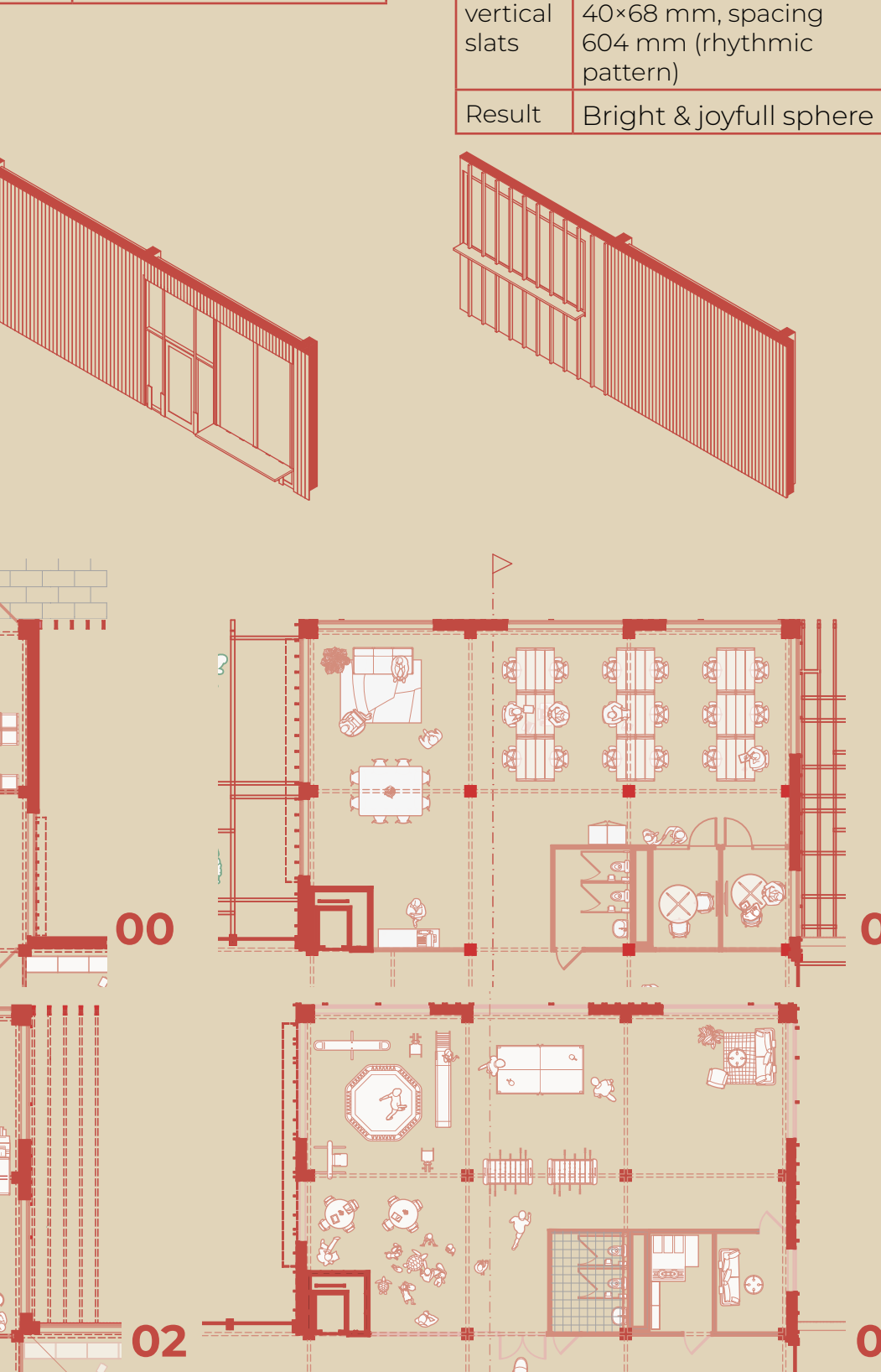
**mood:** bright, green & open

Horizontal slats	none
vertical slats	19 x117 mm, spacing 234 mm (rhythmic pattern)
Result	maximum light & view

**03 Indoor playground**  
**Window/s:** full height (3600 mm) with light filtering

**mood:** joyful, bright

Horizontal slats	none
vertical slats	19x117 mm, spacing 303 mm (rhythmic pattern)
Result	Free, playful, less shading



## C

### Orientation:

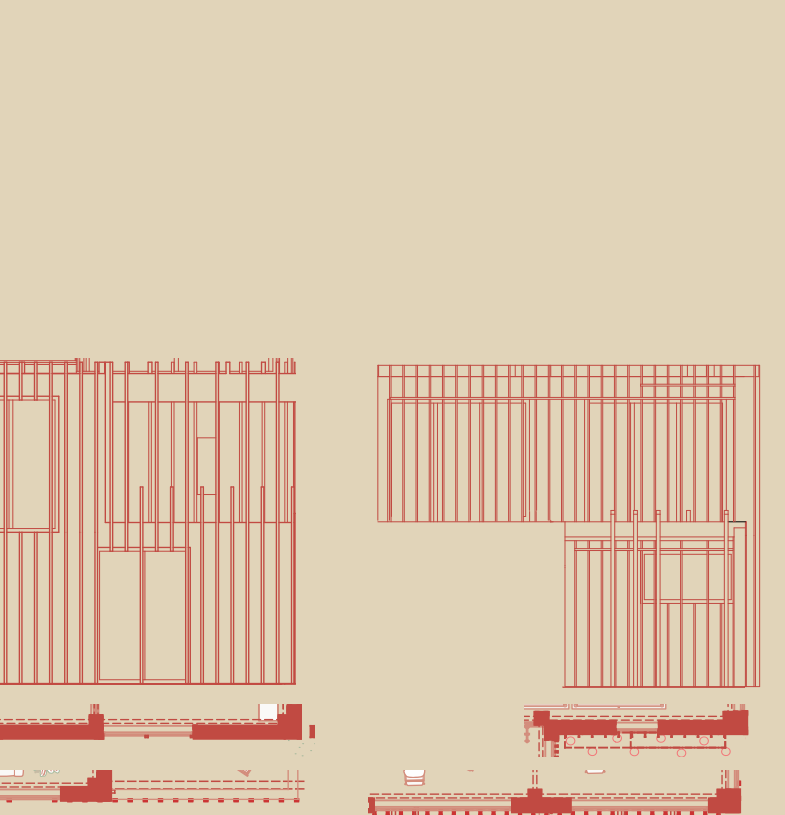
- Facing: Roughly Northwest
- Azimuth: ~310°-320°
- Summer sun altitude: Low in the evening
- Winter sun: Mostly indirect or reflected

### Sun exposure:

- Summer (June 21)**
- Sunrise: ~4:30 AM
  - Direct sun time: ~17:00-21:00 (low angle)
  - Sun angle at 19:00: ~20-30°
  - Challenge: Light is weak but can still cause glare if not shaded

### Winter (Dec 21)

- Almost no direct sun - ambient light only
- Good for insulation, low risk of overheating



### D2

**Sun context**  
Soft indirect daylight in activities

No harsh overheating

No real need for shading -focus shifts to openness, balance, and acoustics

**00 Multi- use hall**  
**Window/s:** full height (3600 mm) with light filtering

**mood:** Quiet, durable, low-visibility zone

Horizontal slats	none
vertical slats	Dense verticals: 100x22 mm, 107 mm spacing
Result	closed- maximum privacy

**00 reading / study shelf (right)**  
**Window/s:** horizontal strip (3750x200mm) at 1.7m for more privacy

**mood:** quiet & excluded

Horizontal slats	at 1.8 to avoid bicycles & people view
vertical slats	40x68 mm, spacing 374 mm
Result	Maintains daylight and privacy

**01 Workshop space**  
**Window/s:** full height (3600 mm) with light filtering

**mood:** bright & active

Horizontal slats	none
vertical slats	68x42 / spacing 332 mm
Result	Visual rhythm, light control, architectural softness

**01 class room**  
**Window/s:** full height (3600 mm) with light filtering

**mood:** bright & active

Horizontal slats	none
vertical slats	68 x42mm spacing 332 mm
Result	Light and structured - helps with focus and educational tone

**02 CO-working space**  
**Window/s:** full height (3600 mm) with light filtering

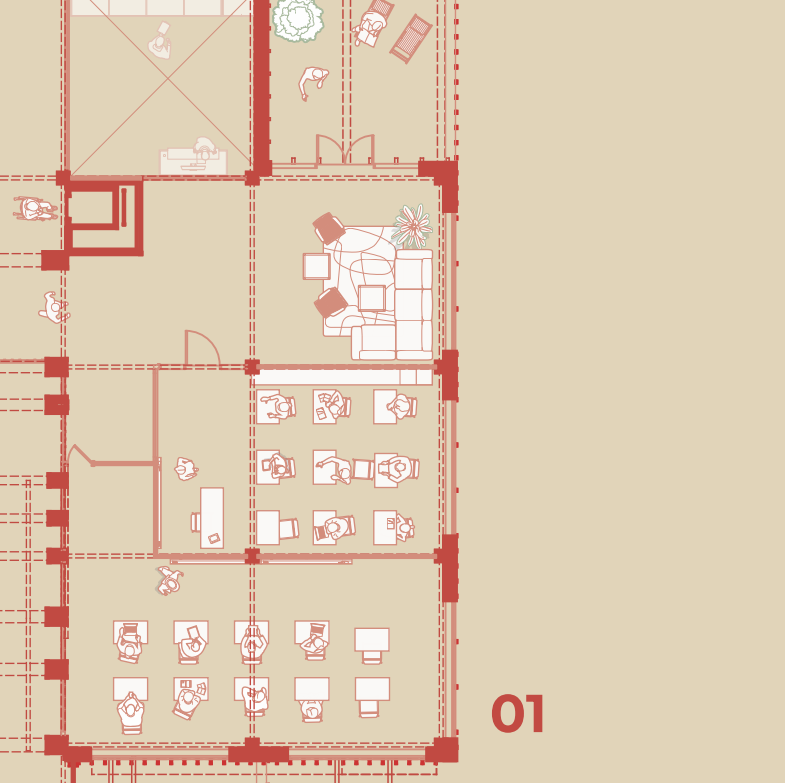
**mood:** bright, green & open

Horizontal slats	none
vertical slats	40x68 mm, spacing 374 mm (rhythmic pattern)
Result	Provide diffuse light for working without glare

**03 Indoor playground**  
**Window/s:** full height (3600 mm) with light filtering

**mood:** open, breathable

Horizontal slats	none
vertical slats	40x68 mm, spacing 604 mm (rhythmic pattern)
Result	Bright & joyful sphere



## D

### Orientation:

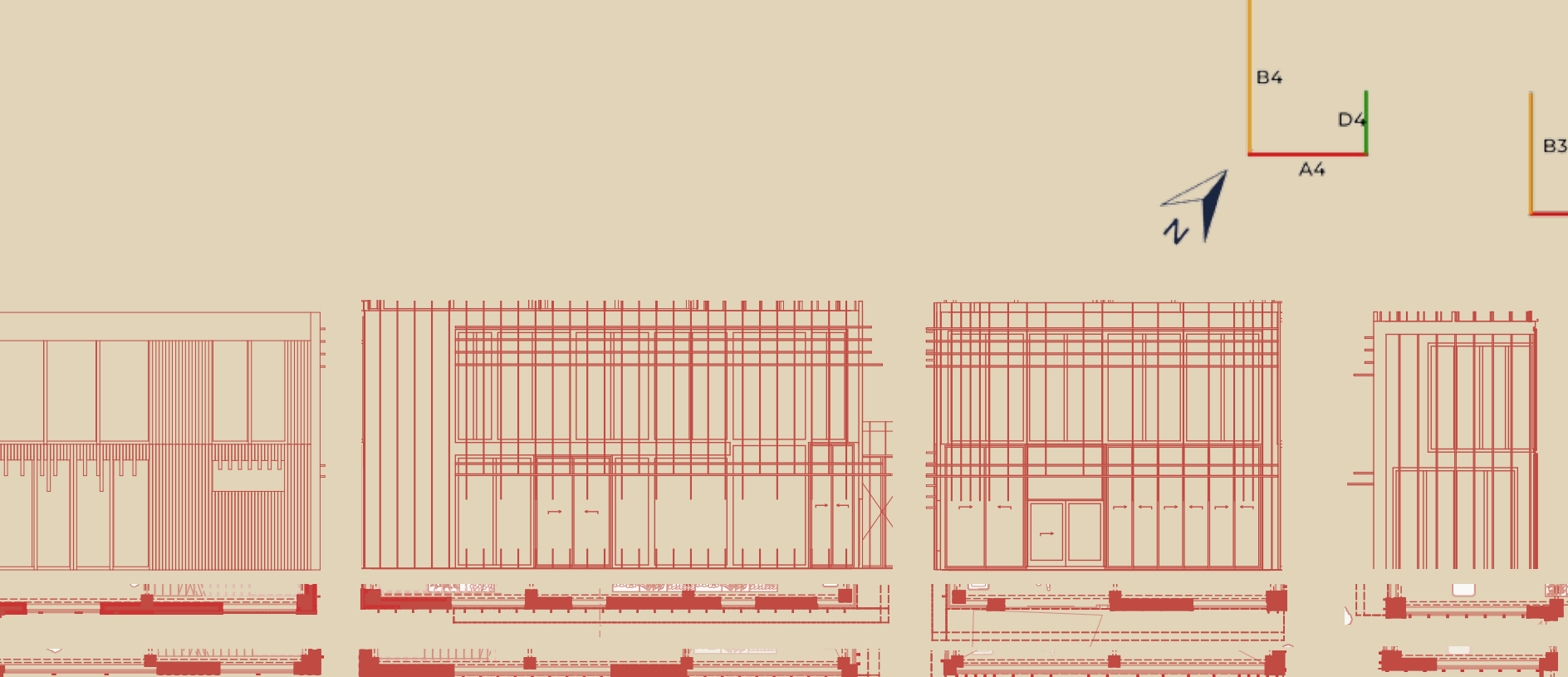
- Facing: Roughly Northeast
- Azimuth: ~40°-50°
- Summer sun altitude: Up to 50-60° in early morning
- Winter sun: Brief and soft, mostly ambient

### Sun exposure:

- Summer (June 21)**
- Sunrise: ~4:30 AM (in line with façade)
  - Direct sun time: ~04:30-09:30
  - Sun angle at 8:00: ~30-40°
  - Advantage: Morning light is soft, energizing no risk of overheating

### Winter (Dec 21)

- Direct sun time: ~08:30-10:30
- Sun angle: ~10-20°
- Effect: Gentle, indirect light; useful for cozy morning zones



### C4

**Sun context**  
sun only in later afternoon (17:00-21:00)

winter sun is mostly indirect, ambient light only

Mild glare in summer evenings, but otherwise low solar heat gain

**00 Fruit & Vegetable Market**  
**Window/s:** Full-height glass (3600 mm) + at 2.4 m for the circulation

**Benefit:** maintain vertical rhythm

natural lighting for the circulation

**mood:** functional

Horizontal slats start at	none
vertical slats	19x100 mm, spacing 105 mm
Result	vertical continuity with other facades

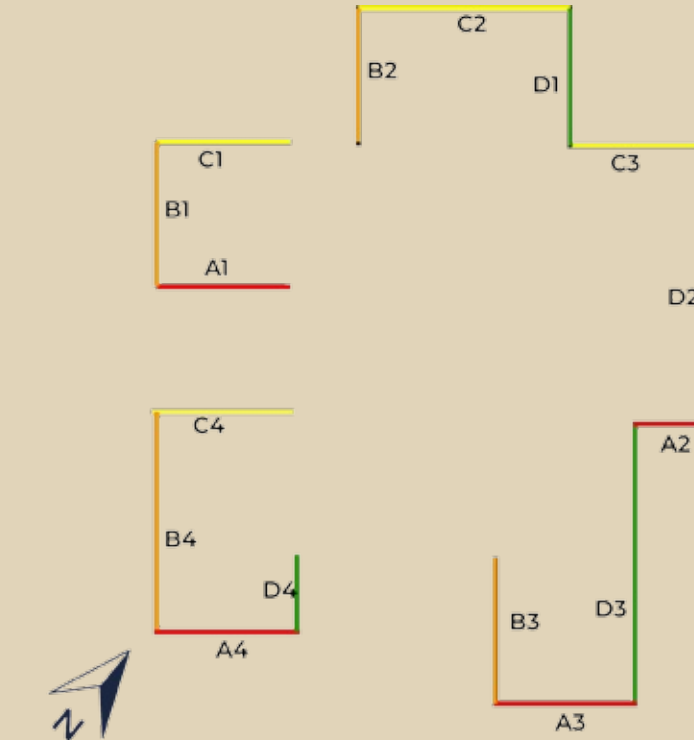
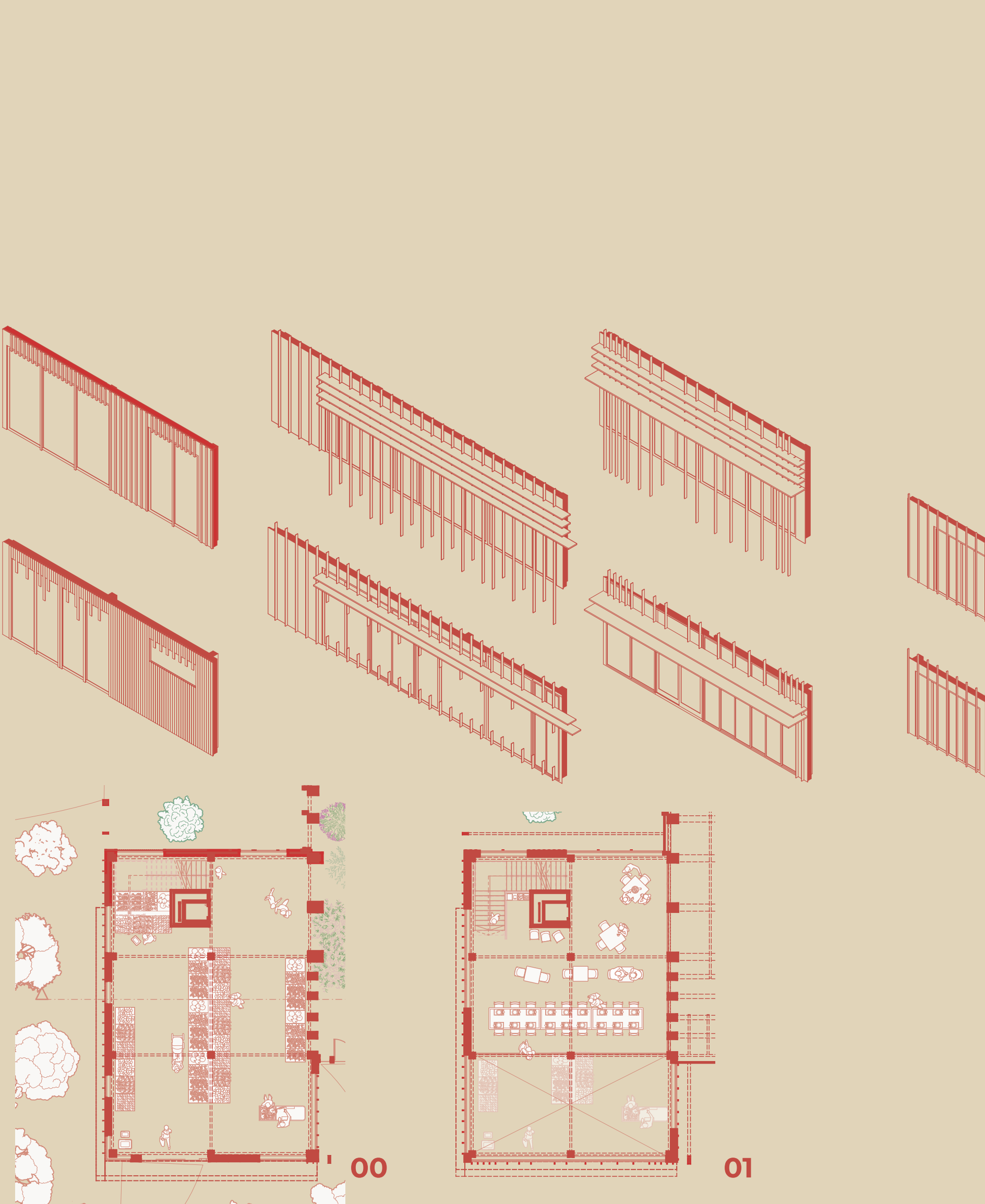
**01 Community kitchen**  
**Window/s:** Full-height glass (3600 mm)

**Benefit:** enjoy soft northwest light

allow visual connection outward

**mood:** warm, semi-public, social

Horizontal slats start at	none
vertical slats	40x68, spacing 558
Result	Inviting, slightly more refined than the market but still open



### D4

**Sun context**  
Soft, early daylight

No harsh overheating

No real need for shading -focus shifts to openness, balance, and acoustics

**00 Fruit & Vegetable Market**  
**Window/s:** Full-height glass (3600 mm) with light filtering

**mood:** welcoming, warm, & open feel.

Horizontal slats none |

vertical slats	42x68 mm, spacing 558 mm
Result	Inviting, slightly more refined than the market but still open

**00 Fruit & Vegetable Market**  
**Concept:** Open-air feeling, fresh, street-friendly

**Window/s:** Full-height glass (3600 mm) + open slatted zones

Sliding panels to fully open the space

Create a bright, welcoming and slightly outdoor-like feel

Let in lots of sun to enhance freshness, color, and activity

Encourage visual and physical interaction from the street

Avoid excessive heat buildup while keeping it open

**Benefit:** Slats frame the produce display cast light shadows that dance through baskets of color

Visually permeable - people can see activity from outside

**mood:** Feels fresh, natural, and informal - like a market stall

Horizontal slats start at

starting at 3m Spacing 400 mm & depth 500 mm

Vertical slats

19x117 mm, spacing 800 mm in the middle (more open than other facades) gets more close to wards the edges 300mm

results

Block extreme summer sun at high noon, preserve openness below. Direct light in, frame visibility, no visual barrier

Block extreme summer sun at high noon, preserve openness below. Direct light in, frame visibility, no visual barrier

Block extreme summer sun at high noon, preserve openness below. Direct light in, frame visibility, no visual barrier

Block extreme summer sun at high noon, preserve openness below. Direct light in, frame visibility, no visual barrier

Block extreme summer sun at high noon, preserve openness below. Direct light in, frame visibility, no visual barrier

Block extreme summer sun at high noon, preserve openness below. Direct light in, frame visibility, no visual barrier

Block extreme summer sun at high noon, preserve openness below. Direct light in, frame visibility, no visual barrier

Block extreme summer sun at high noon, preserve openness below. Direct light in, frame visibility, no visual barrier

Block extreme summer sun at high noon, preserve openness below. Direct light in, frame visibility, no visual barrier

Block extreme summer sun at high noon, preserve openness below. Direct light in, frame visibility, no visual barrier

Block extreme summer sun at high noon, preserve openness below. Direct light in, frame visibility, no visual barrier

Block extreme summer sun at high noon, preserve openness below. Direct light in, frame visibility, no visual barrier

Block extreme summer sun at high noon, preserve openness below. Direct light in, frame visibility, no visual barrier

Block extreme summer sun at high noon, preserve openness below. Direct light in, frame visibility, no visual barrier

Block extreme summer sun at high noon, preserve openness below. Direct light in, frame visibility, no visual barrier

Block extreme summer sun at high noon, preserve openness below. Direct light in, frame visibility, no visual barrier

Block extreme summer sun at high noon, preserve openness below. Direct light in, frame visibility, no visual barrier