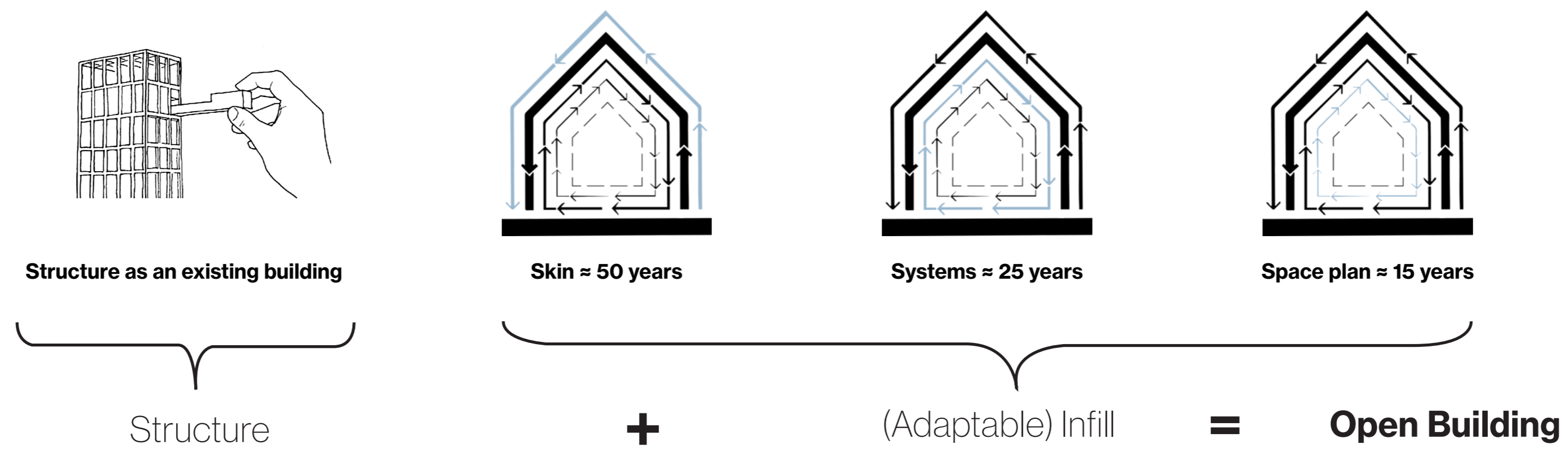
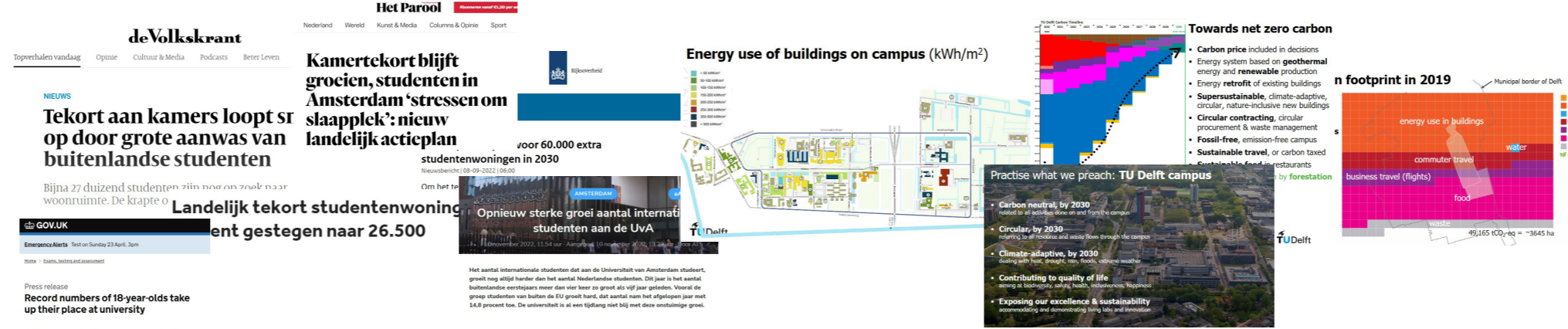
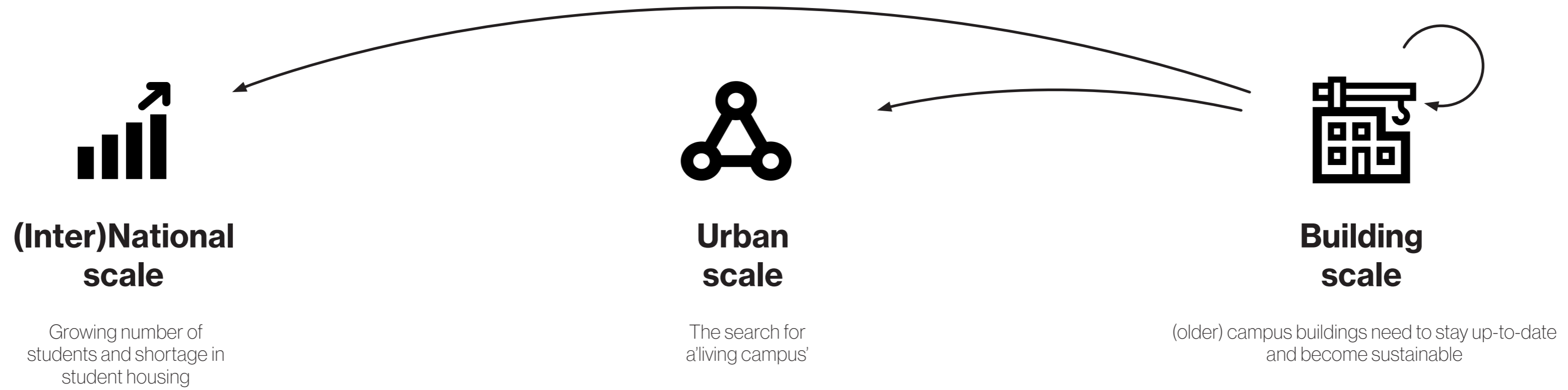


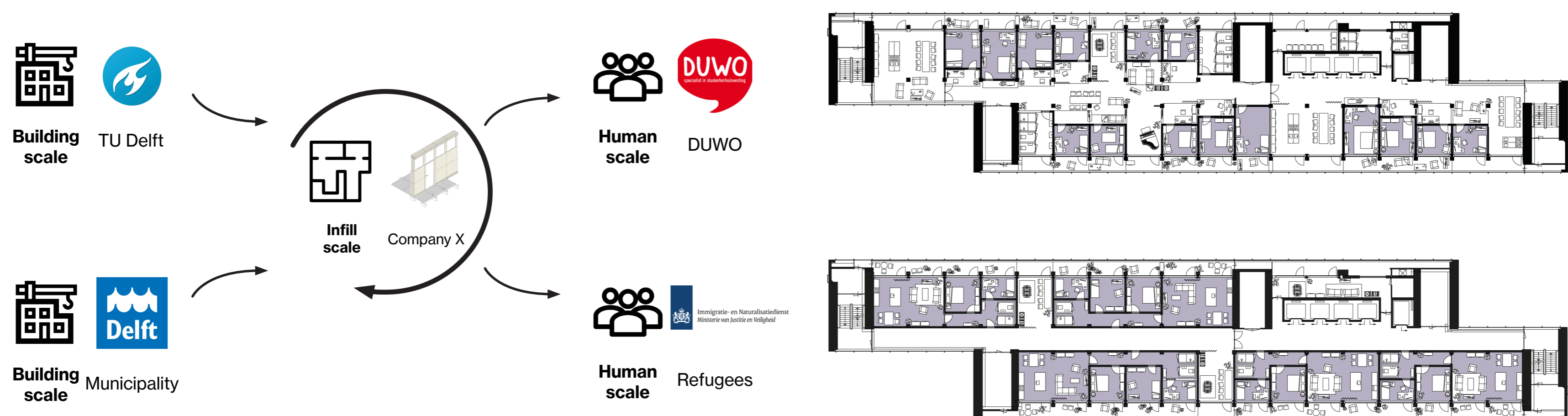
# EWI | Longevity via an adaptable infill within an existing structure



**Shearing layers** | Adaptability is how much the layers are separated and able to change independent from each other



**Problemstatement** | Current search for student housing and social interaction on the TU Delft campus within out of date university buildings

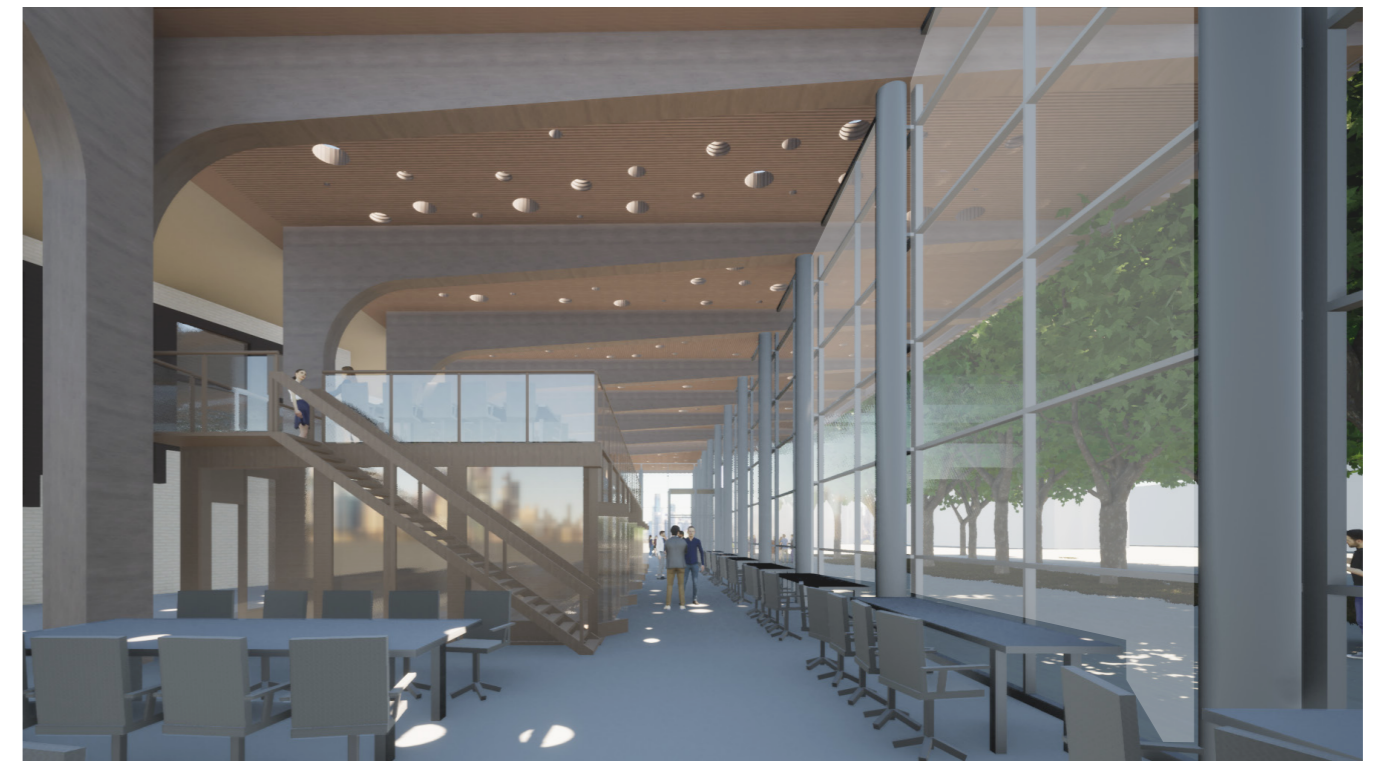


**Problemstatement** | Current search for student housing and social interaction on the TU Delft campus within out of date university buildings

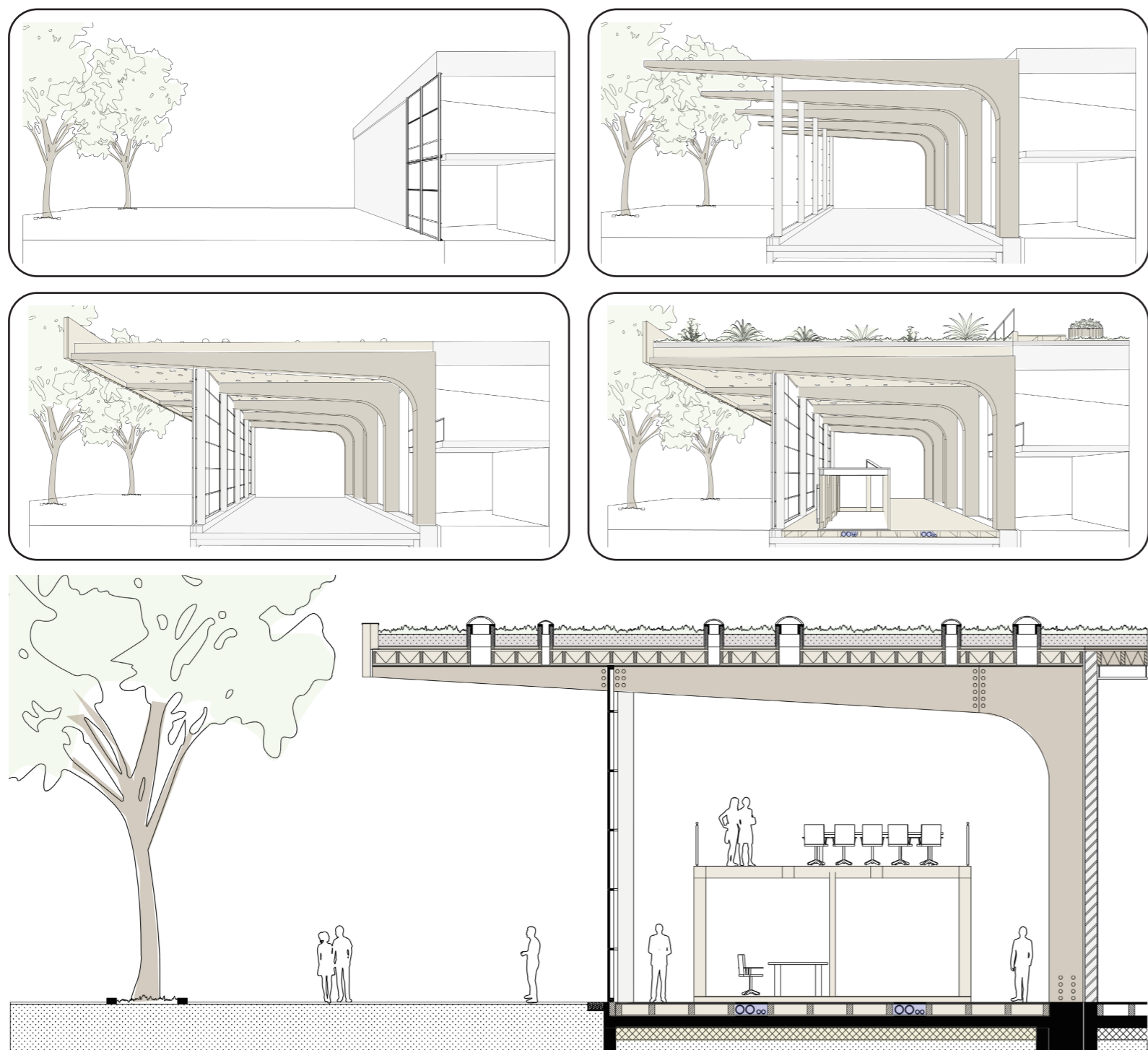


**Sustainability** | Using an existing structure and building upon the overdue layers in order to stay up-to-date

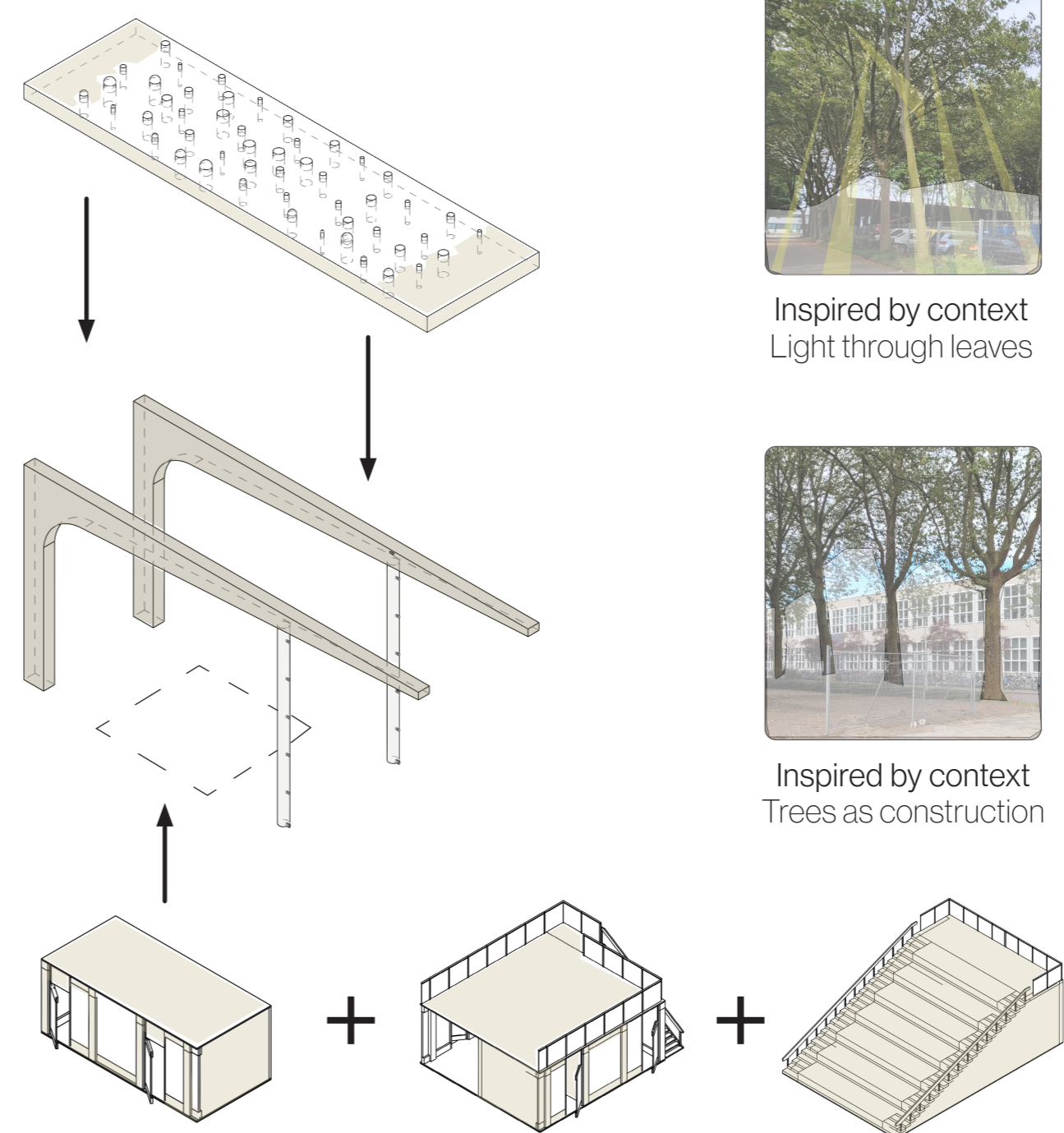
# EWI Low-rise | The new and multifunctional heart of the campus



**Architecture** | Inspired by the context and creating a new study landscape underneath one roof



**Structure** | Modular and prefabricated building extension creating flexibility



**Infill** | Demountable interior space elements underneath modular construction



Inspired by context  
Light through leaves



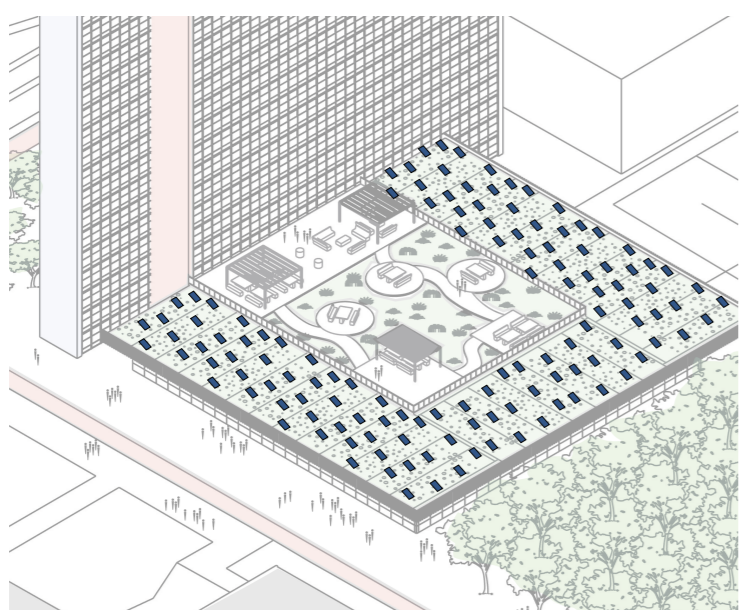
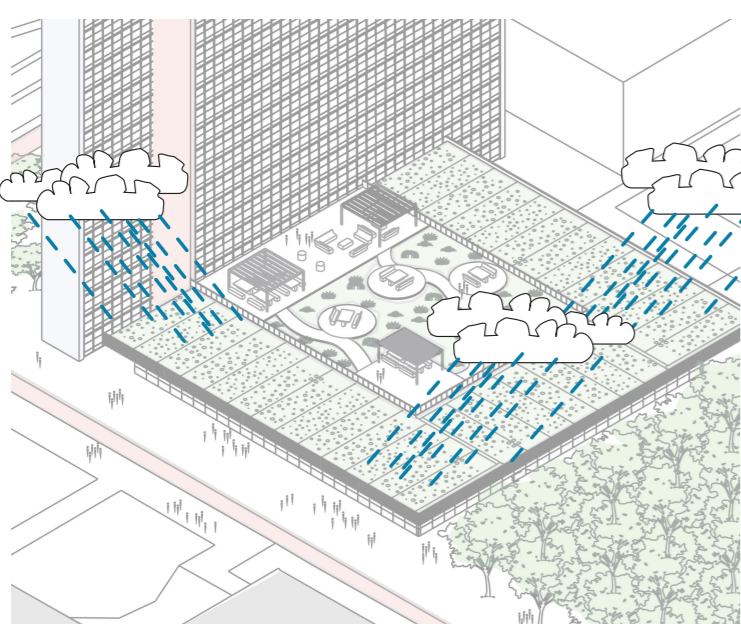
Inspired by context  
Trees as construction



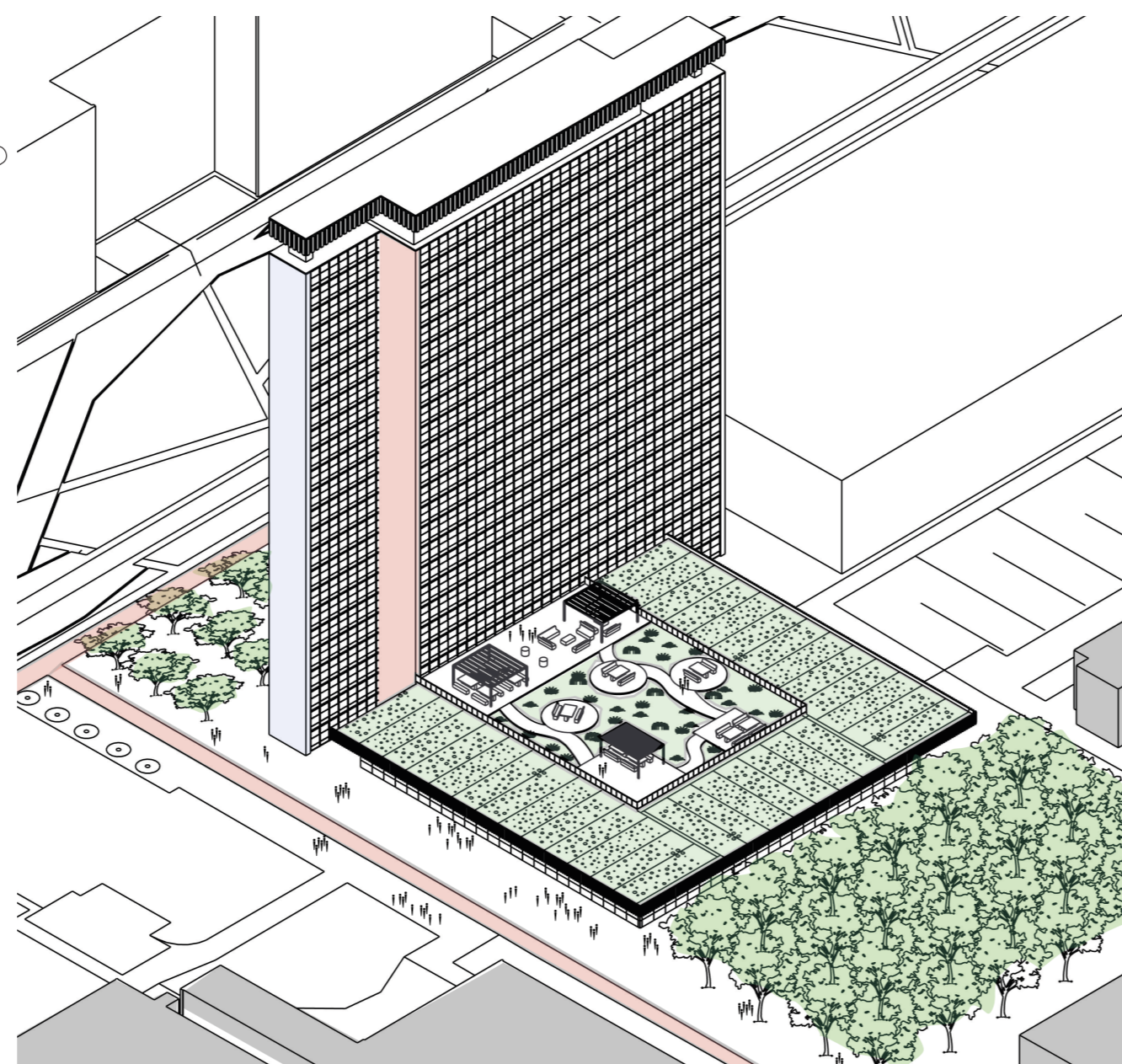
**Render roof** | Green oasis above ground level creates intimacy and privacy



**Render Entrance** | Strengthened bond between building and context



**Sustainability AXO** | Rainwater collection and energy generation on the roof



**Situation** | Private (purple) and commercial (yellow) space connecting to campus

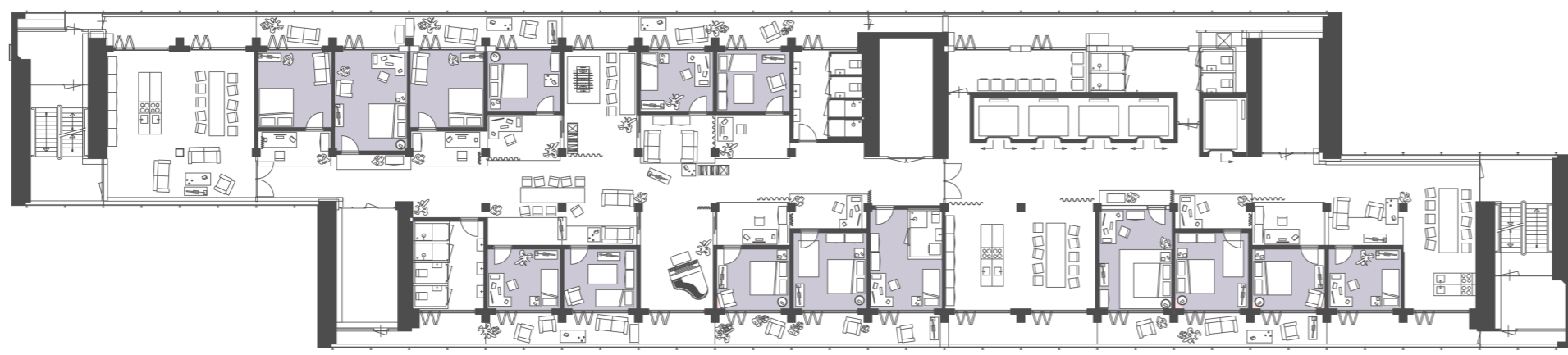
# EWI High-rise | Collective student housing spaceplan activating campus



**Communal space** | Open social space for people to meet during shared activities



**Inbetween** | Buffer between social and private and a place to appropriate



**Private** | Individual student housing units with room for personalization



**Water and sewage** | Shower and toilet units placed in shared and mixed bathrooms



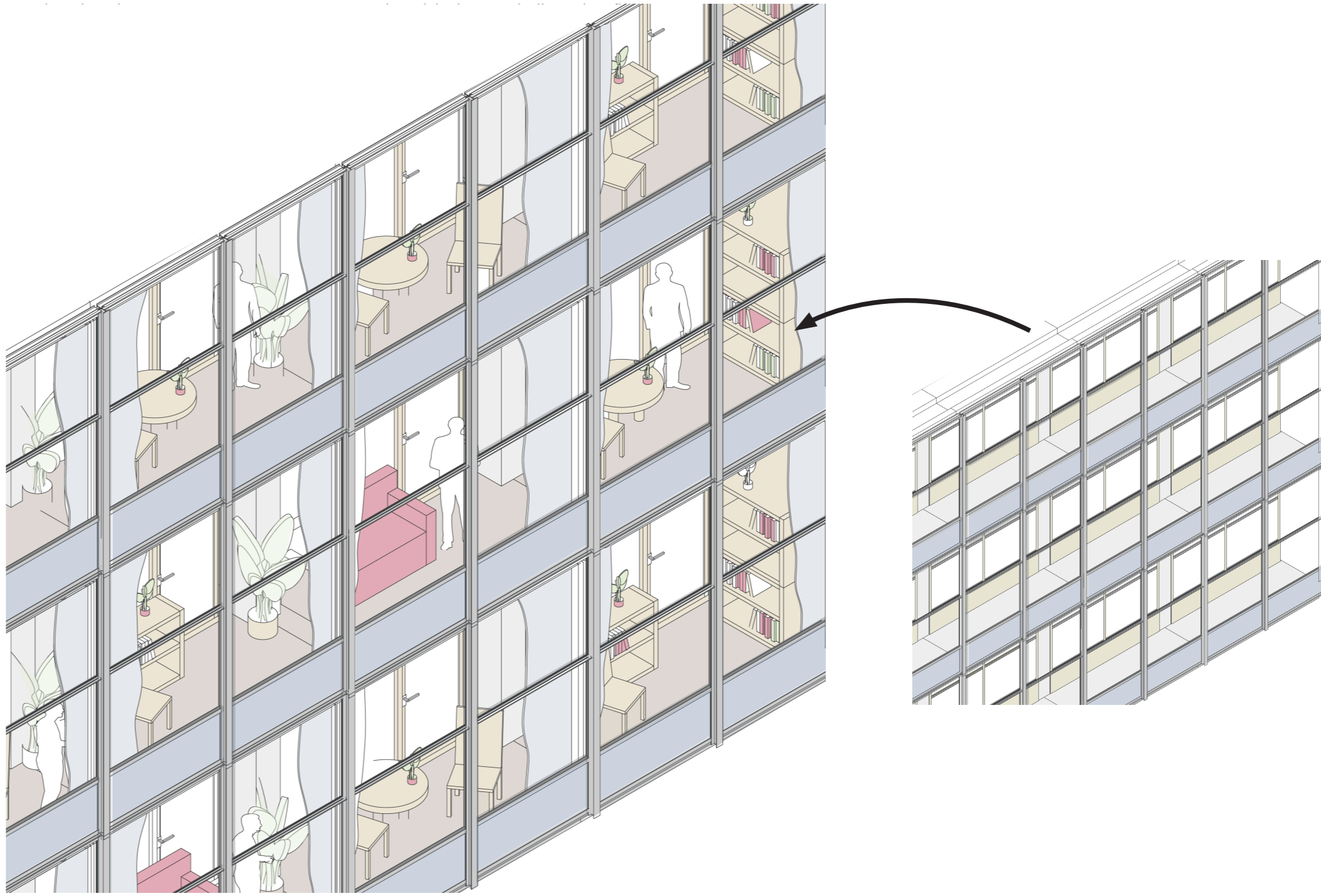
**Winter garden** | Not inside nor outside and can be used best in spring and fall



**Space plan** | Collective student housing to stimulate social interaction by maximising shared functionalities and space on the campus area

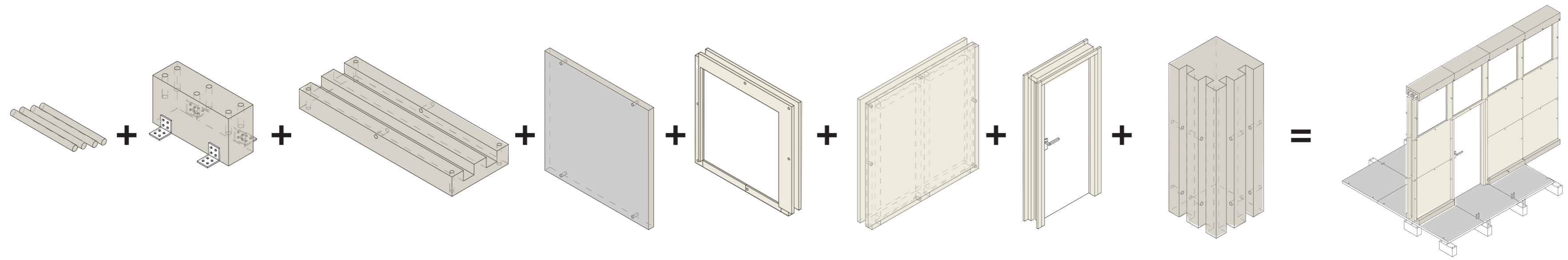


**Facade** | Life projected onto campus by the use of space inside the double facade

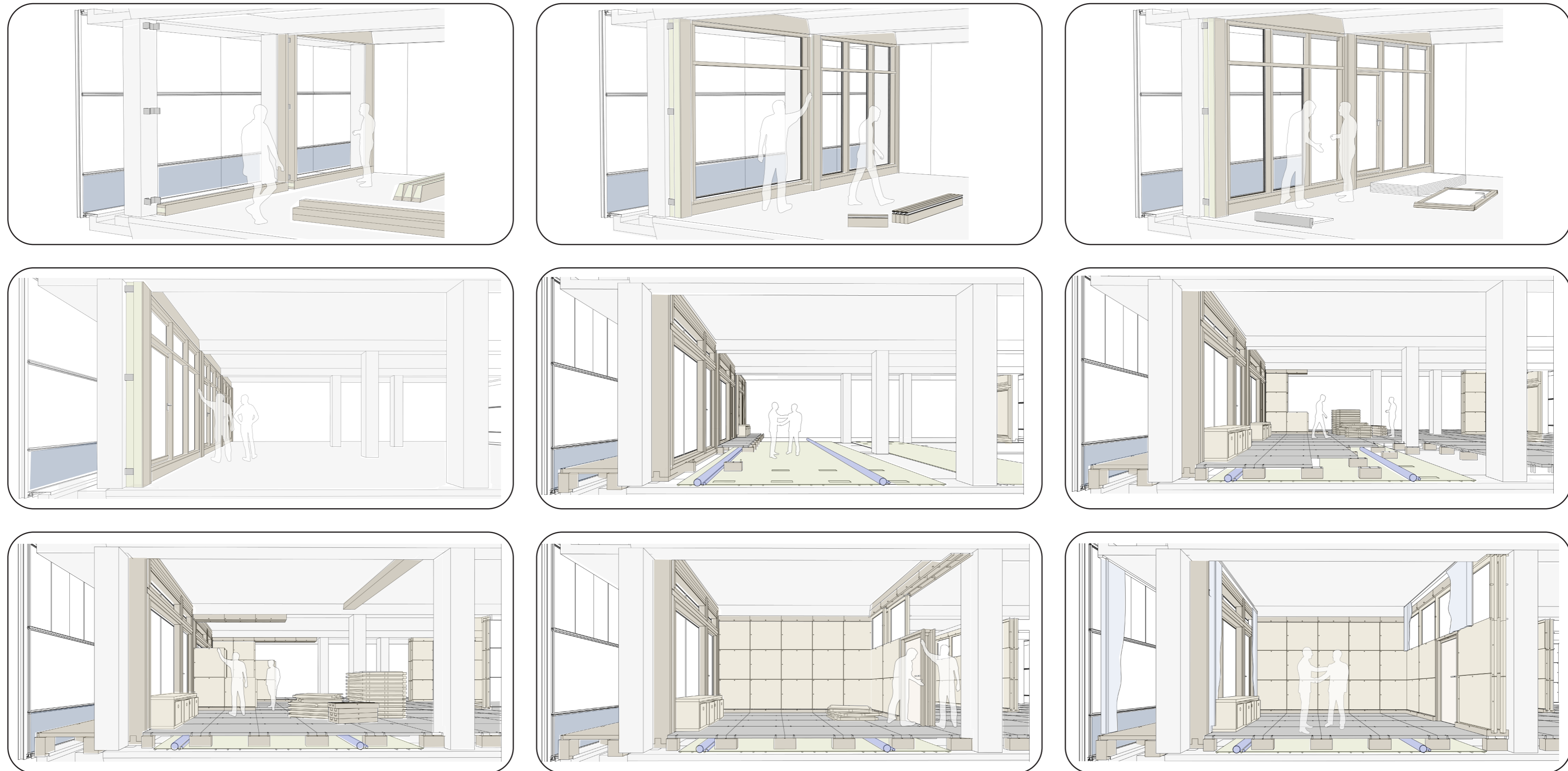


**Day and Night** | Appropriation of space creates life

# EWI High-rise | Future proof through a modular and adaptable infill system



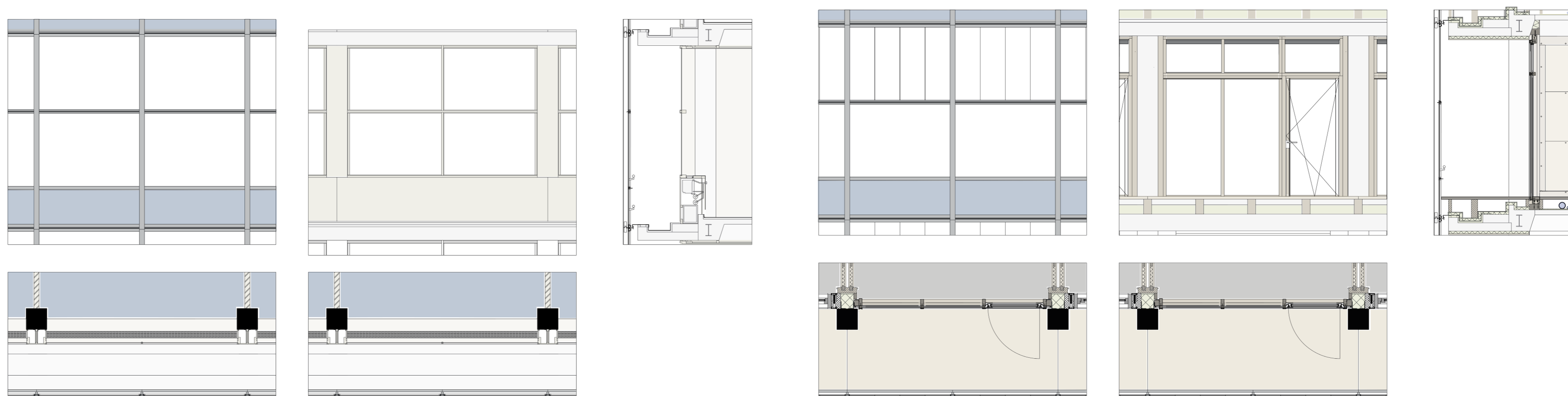
**Infill** | Modular building infill system creating flexibility and adaptability over time within the structure of EWI



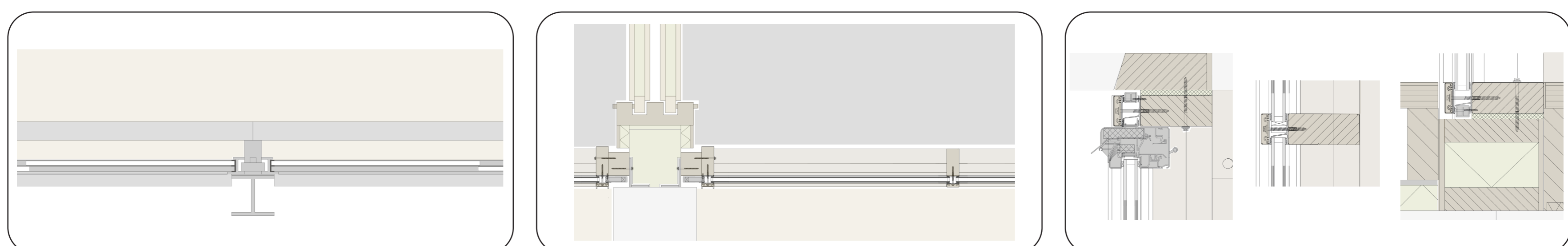
**Build up** | Self-buildable infill units and facade elements providing quick and easy adaptations in short and long terms by demountable construction methods



**Climate design** | Future proof EWI high-rise section with sustainable energy and heating systems with adaptable water and sewage system



**Second skin facade** | Small modest modifications on the outside facade while completely replacing the interior facade



**Details** | Zoomed in adjustments made within the proces