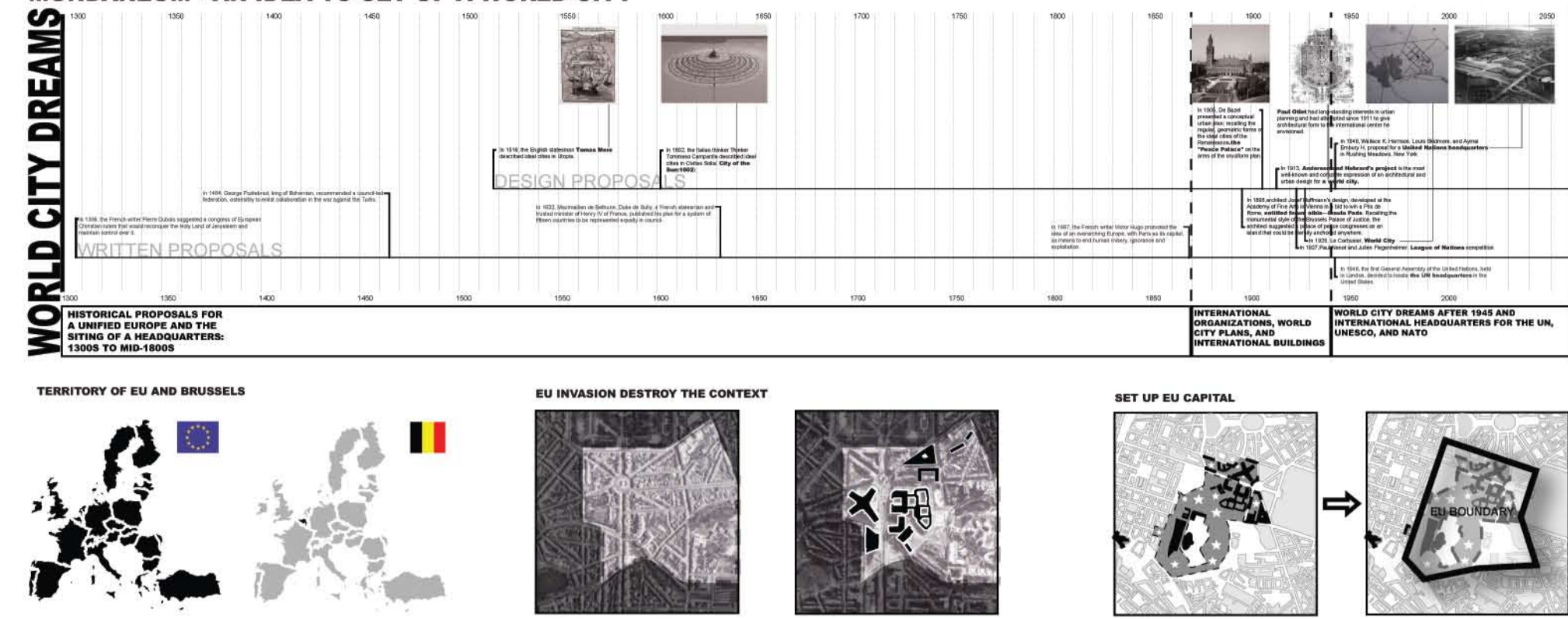


1 Establish a Boundary of European Capital

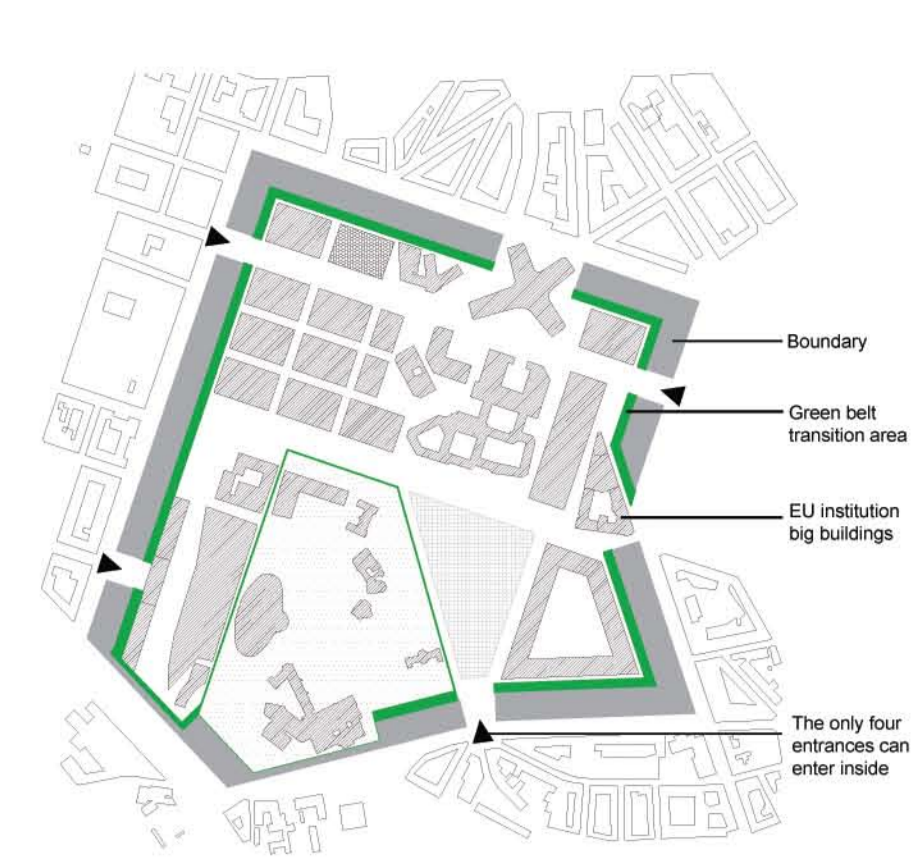
BRUSSELS



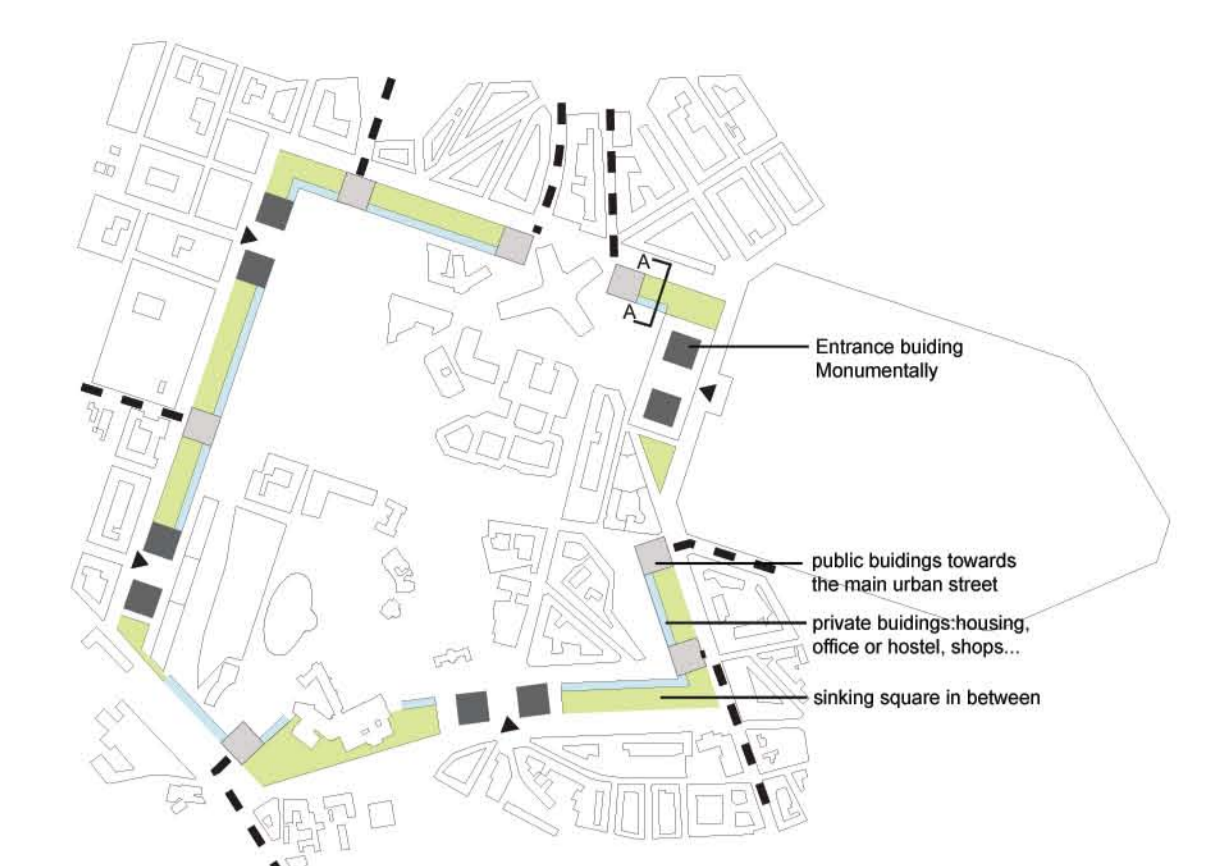
MUNDANEUM - AN IDEA TO SET UP A WORLD CITY



STRUCTURE LAYER
the whole boundary's intention is to create a clear urban structure



BOUNDARY TYPOLOGY
the big buildings are not the entrance into the EU capital but the edge to Brussels

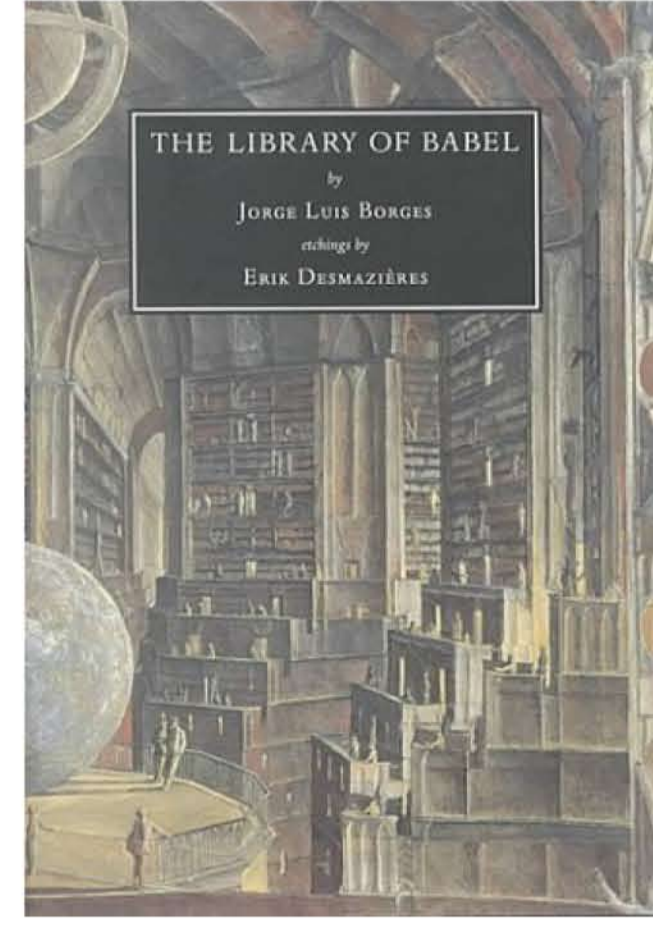


2 Entrance tower - an infinite library

After lots of renovations in Europe, the European Union is standing for lots of European countries at the stage of the world. After the instauration of European Union, the independency of the European countries may become the history for ever. At this time, to build a European library and collect all the books of the European history would be a recall to the EU and a treasure towards the comity. Book as the media of transferring knowledge has existed for thousands of years, which stands for history and time. However, today the internet is replacing the books gradually. This library would be a betel to hold these rare books and a monument of European history.

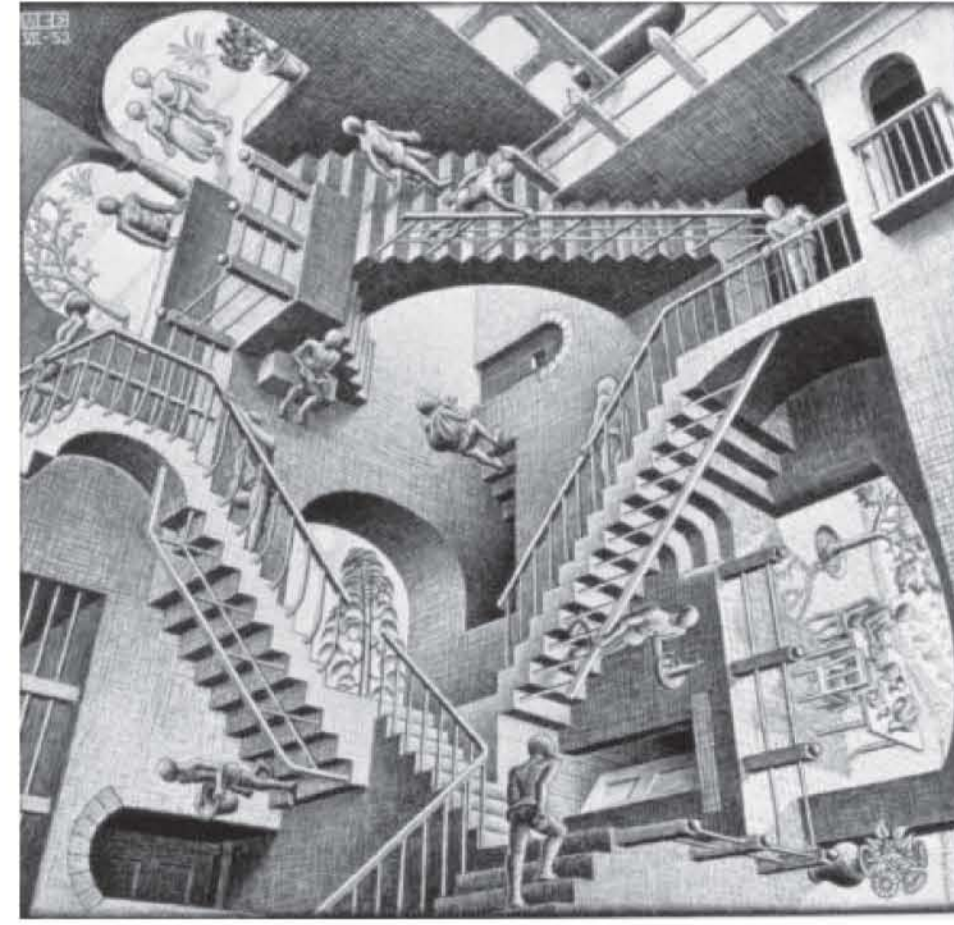
This project was inspired by the novel the library of Babel of Jorge Luis Borges. In the novel he describes the library as a place of storage mystery. The repetition of the letters composes the almost infinite books. The books forms mazes, thus the library became a place of labyrinth. The library grows up with time and in the stacks of books it becomes very big. Through the go round and round circulation, it deposited the unforeseen blessedness in one bookshelf which is hard to seek.

The library takes the book space as a central space of a circular continuous volume in the whole building. The book space as a central monument space became the main element in the whole library. The staircase the terrace as well as the dense bookshelves repeats in a spiral way and creates a rotative space.



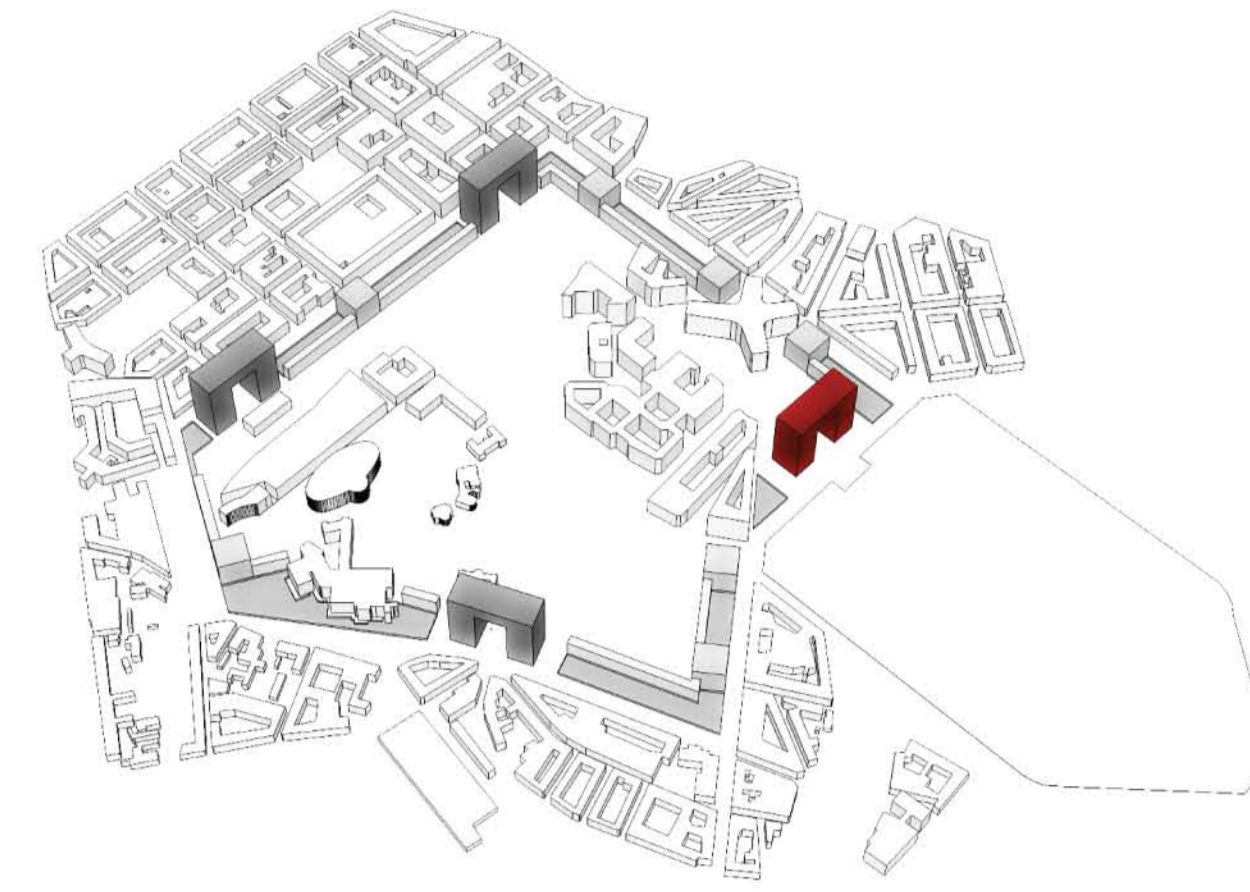
Jorge Luis Borges - The Library of Babel

"The universe (which others call the Library) is composed of an indefinite and perhaps infinite number of hexagonal galleries, with vast air shafts between, surrounded by very low railings. From any of the hexagons one can see, interminably, the upper and lower floors."

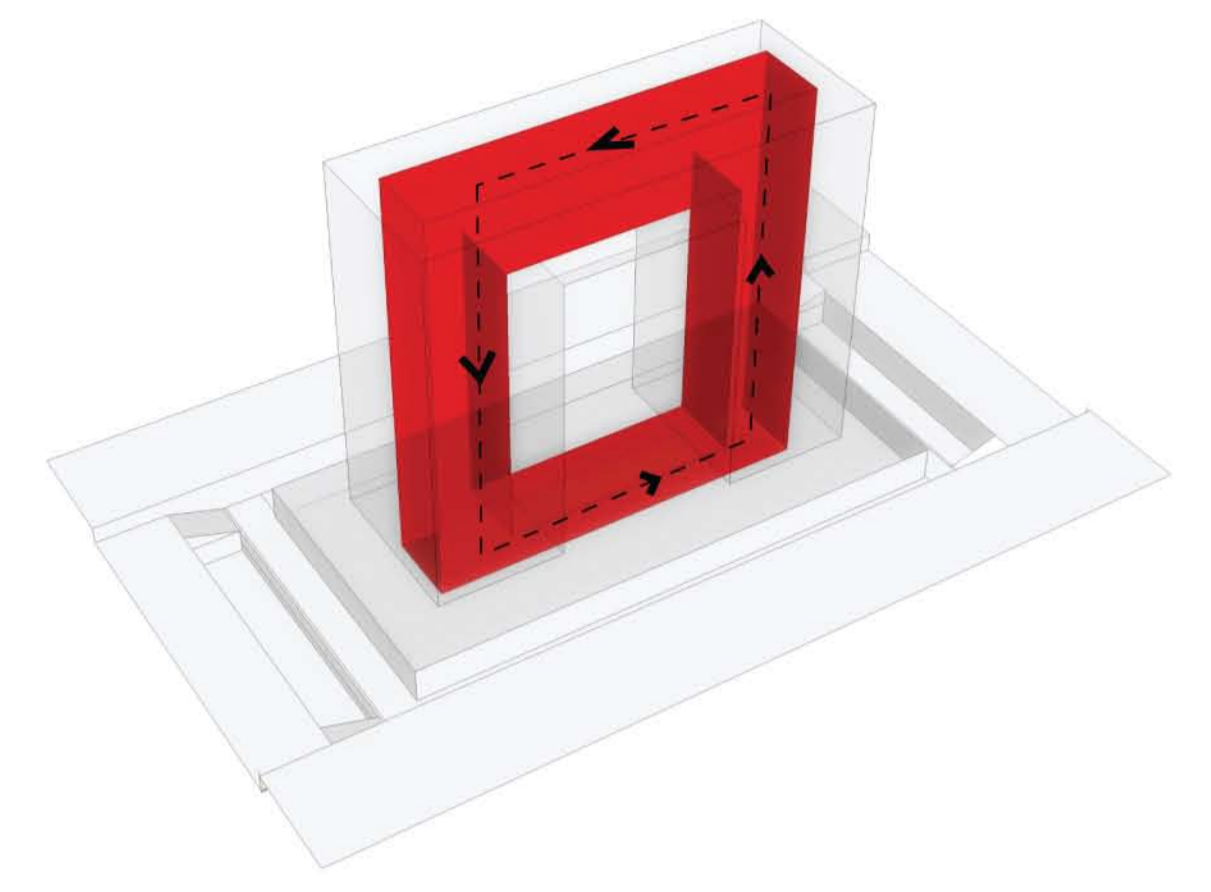


Maurits Cornelis Escher

Escher who is well known for his drawing of infinity. In the staircase people can have different activity, also the continuous staircase can also imply a continuous sense of infinity.

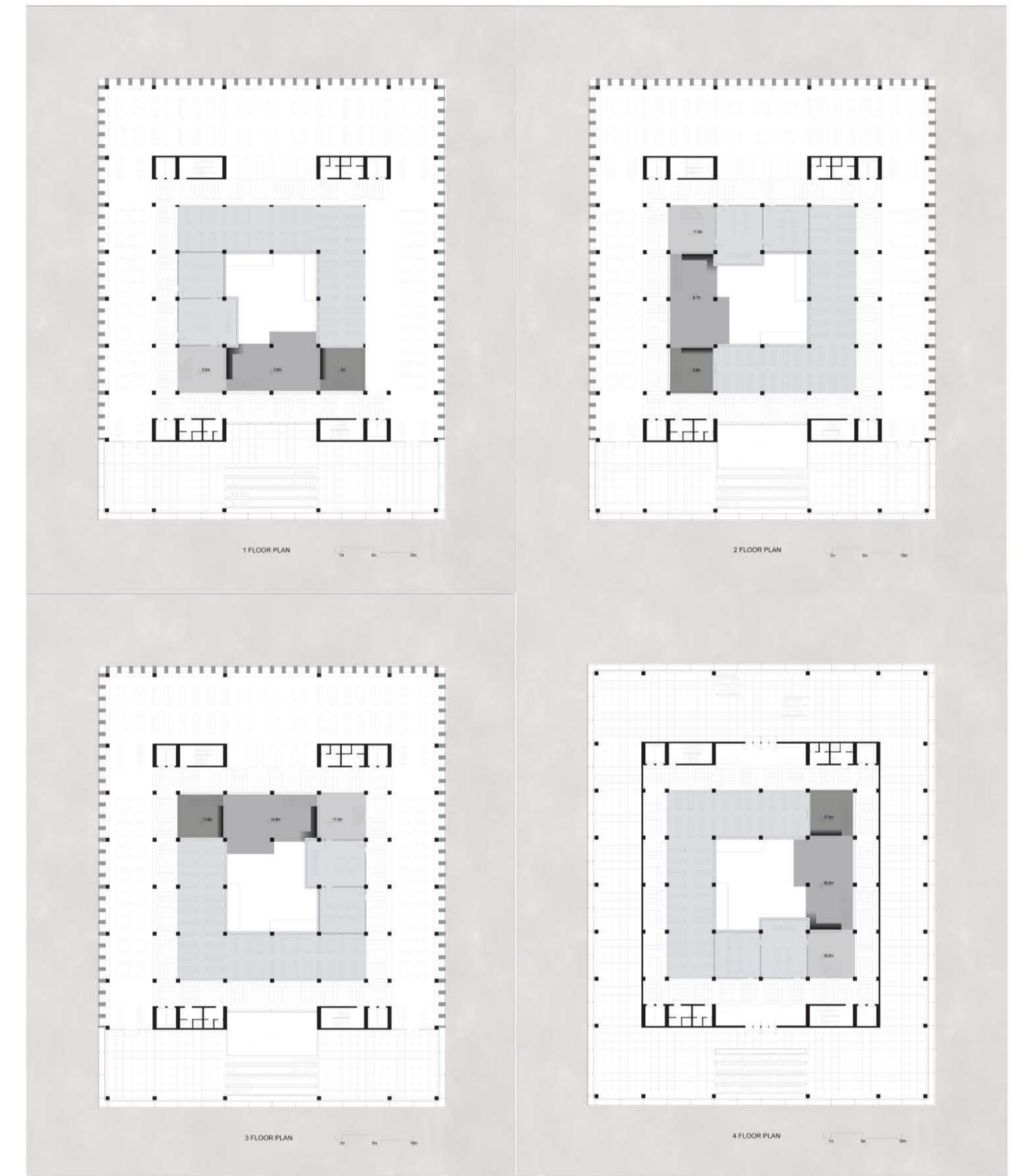
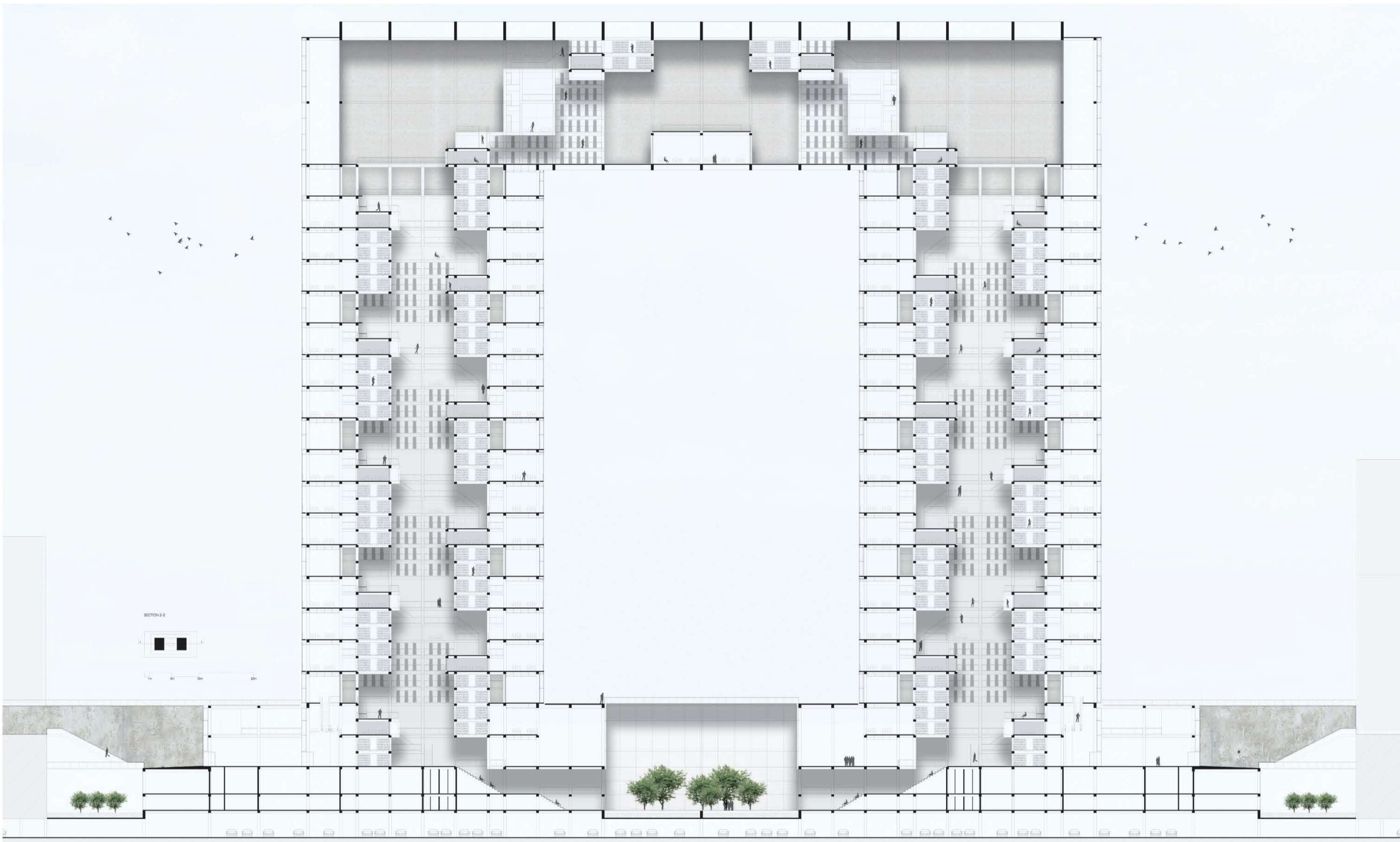


ENTRANCE BUILDING
The entrance building which is the main element of the whole boundary. It acts as the appearance of European Capital should express the spirit of European Union to the public.

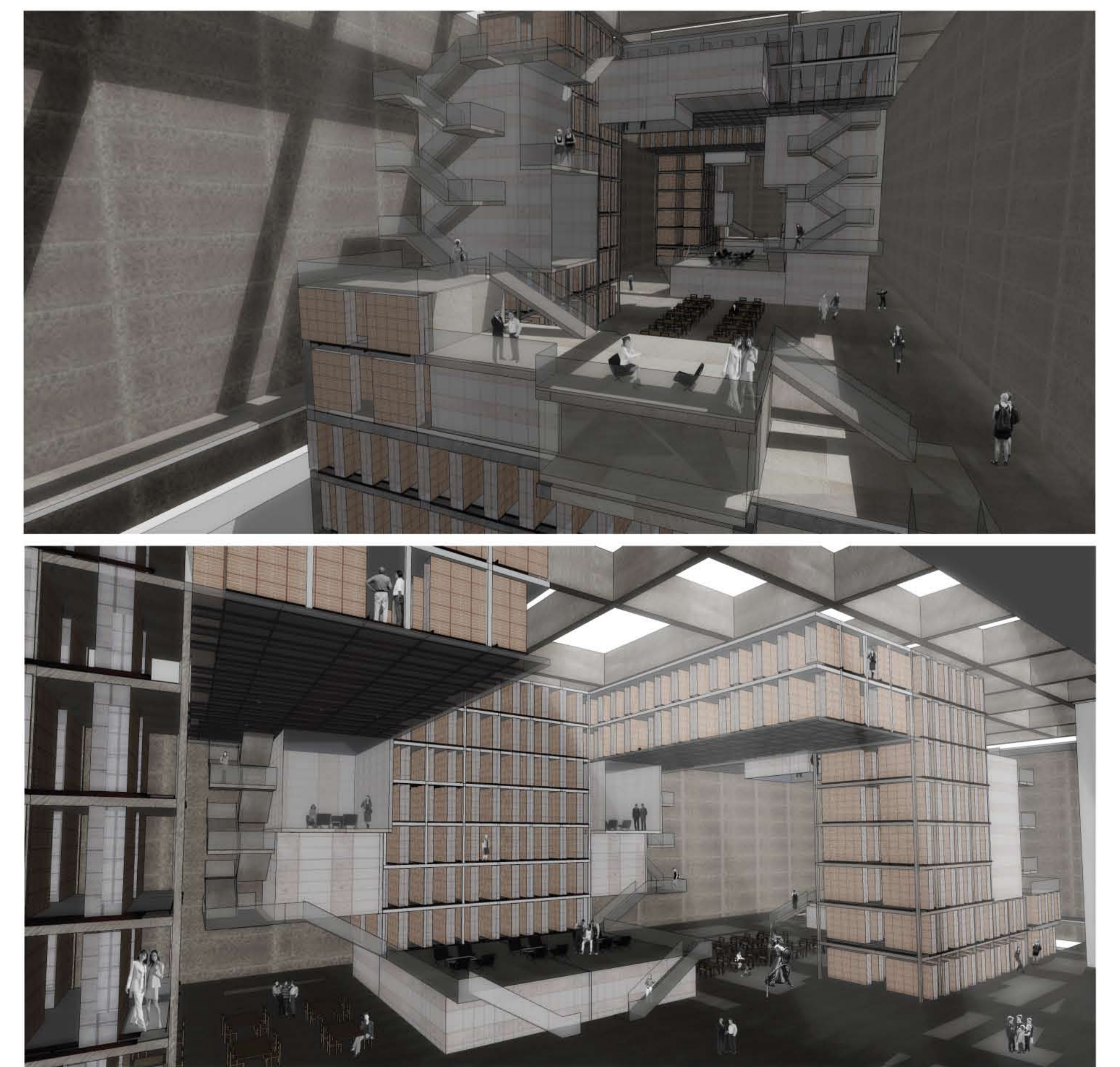
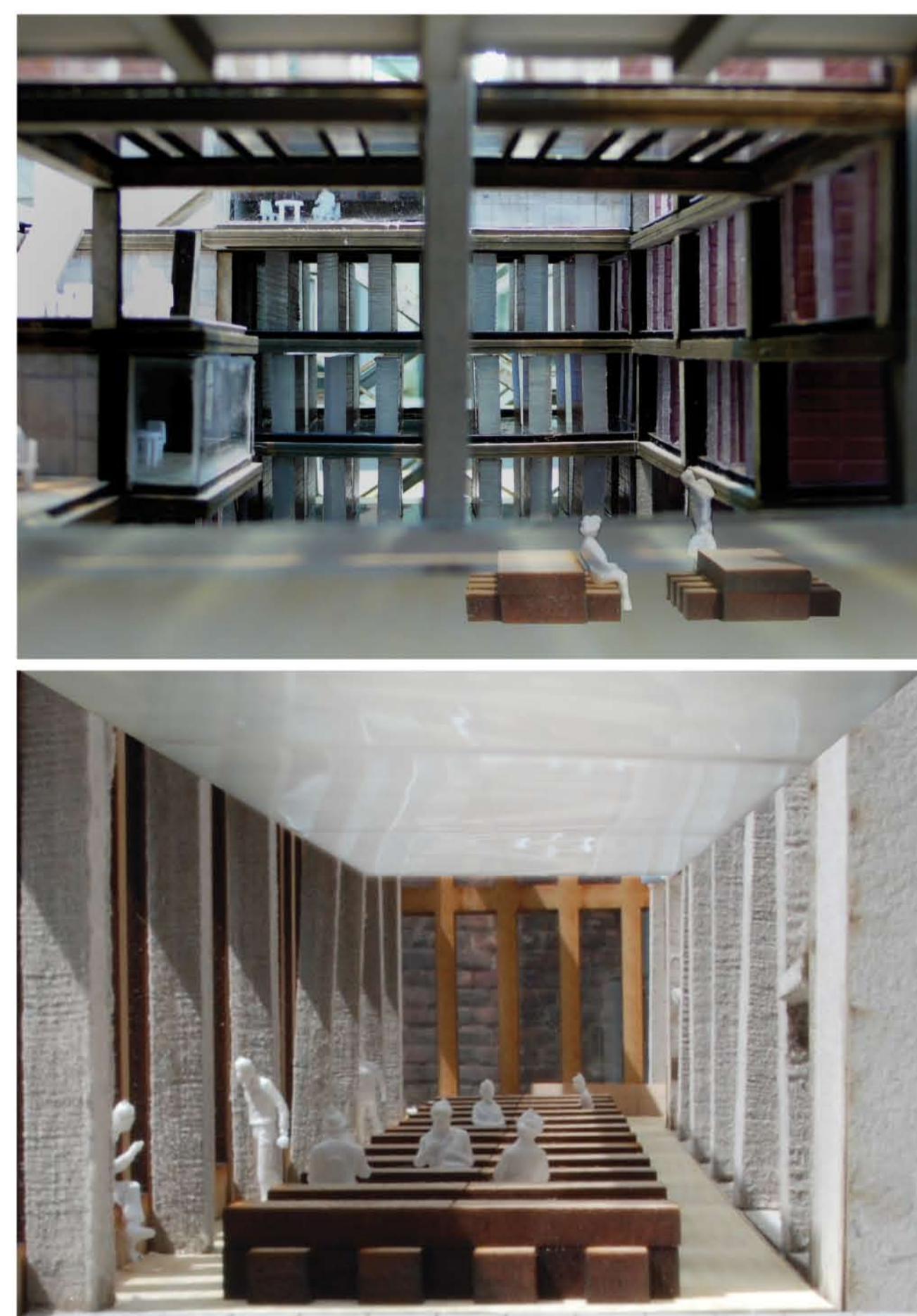
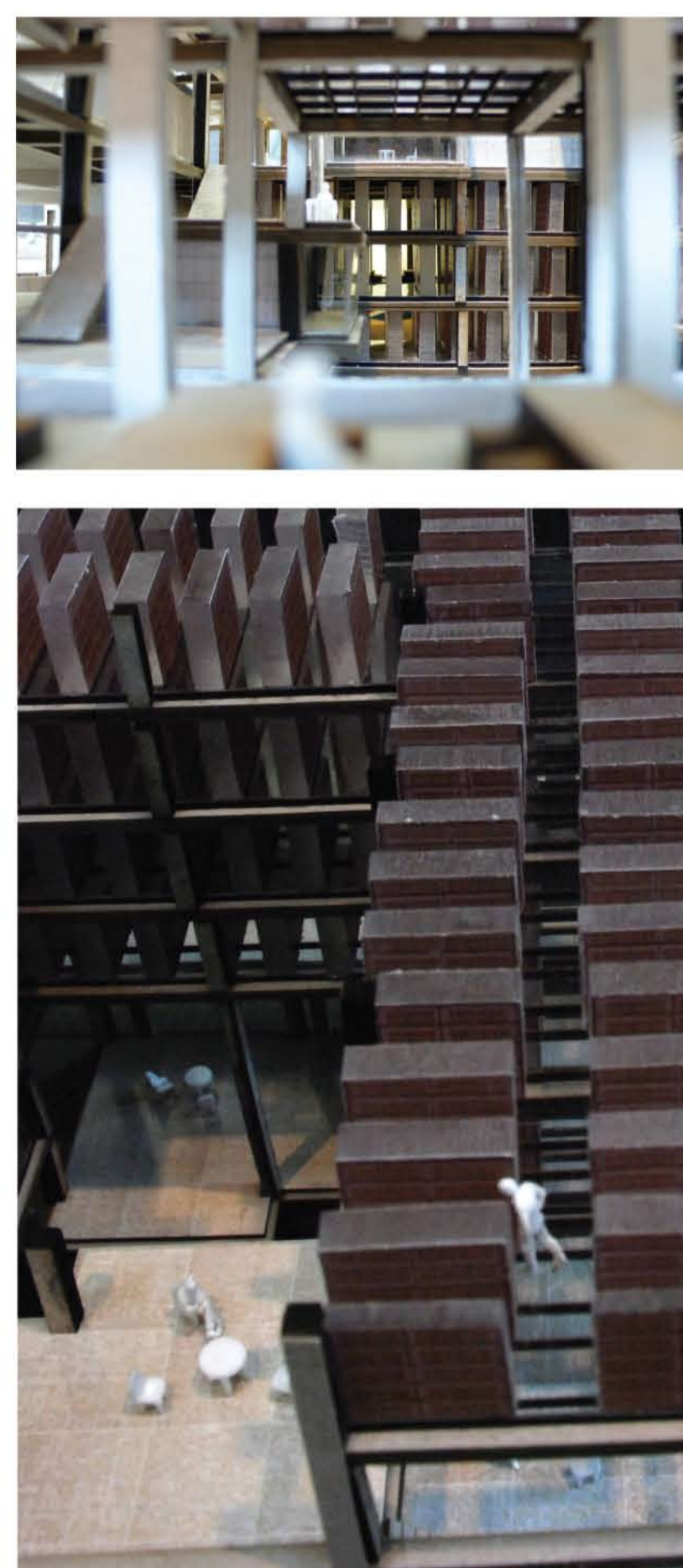


INFINITE - CIRCULATION
The central space of books is the main element of the building, which surrounds a continuous void, creates a monument space for book and express the idea of infinite.

3 Section and plans



4 Perspectives



While you are standing underneath the vertical void of the book space, you will sense the power of the infinite books and the heaviness of the remote European history. Along the continuous staircase, reaching the dense bookshelf space, standing on the translucent glass floor, suddenly you are totally surrounded by the books, from left and right, from top and bottom.

With a reverent mood you picked up a book and go back to the reading space, where the sunlight penetrates through the window leaving a rhythm shadow echo with the bookshelves. The wooden floor, transparent bright ceiling, comfortable chair, revealing a pleasant relax atmosphere that is contrast with the inner book space. Leaning upon the column enjoying the nice city landscape, the history and the reality comes together, the moment itself became a new history.

From both side the book space continuous horizontally to the top, light penetrates through the sky creates a high vertical space, while imply the library connects the heaven and hell. In the repeated terrace, staircases and terrace, the similar scenarios happened in similar space and repeating. The library itself is a carrier of old and new, a place of the past of present.