

# CRAFT CENTER

Craftschool & young entrepreneurs

Antwerpen, Belgium

P5 Rogier Bos - 28.06.2019

## **I CONTENT**

Introduction

## **II RESEARCH**

History of Antwerpen

Montevideo area & intimate city

Motivation of the programme

## **III DESIGN**

Concept

Organization

Architectural language

Conclusion

# I

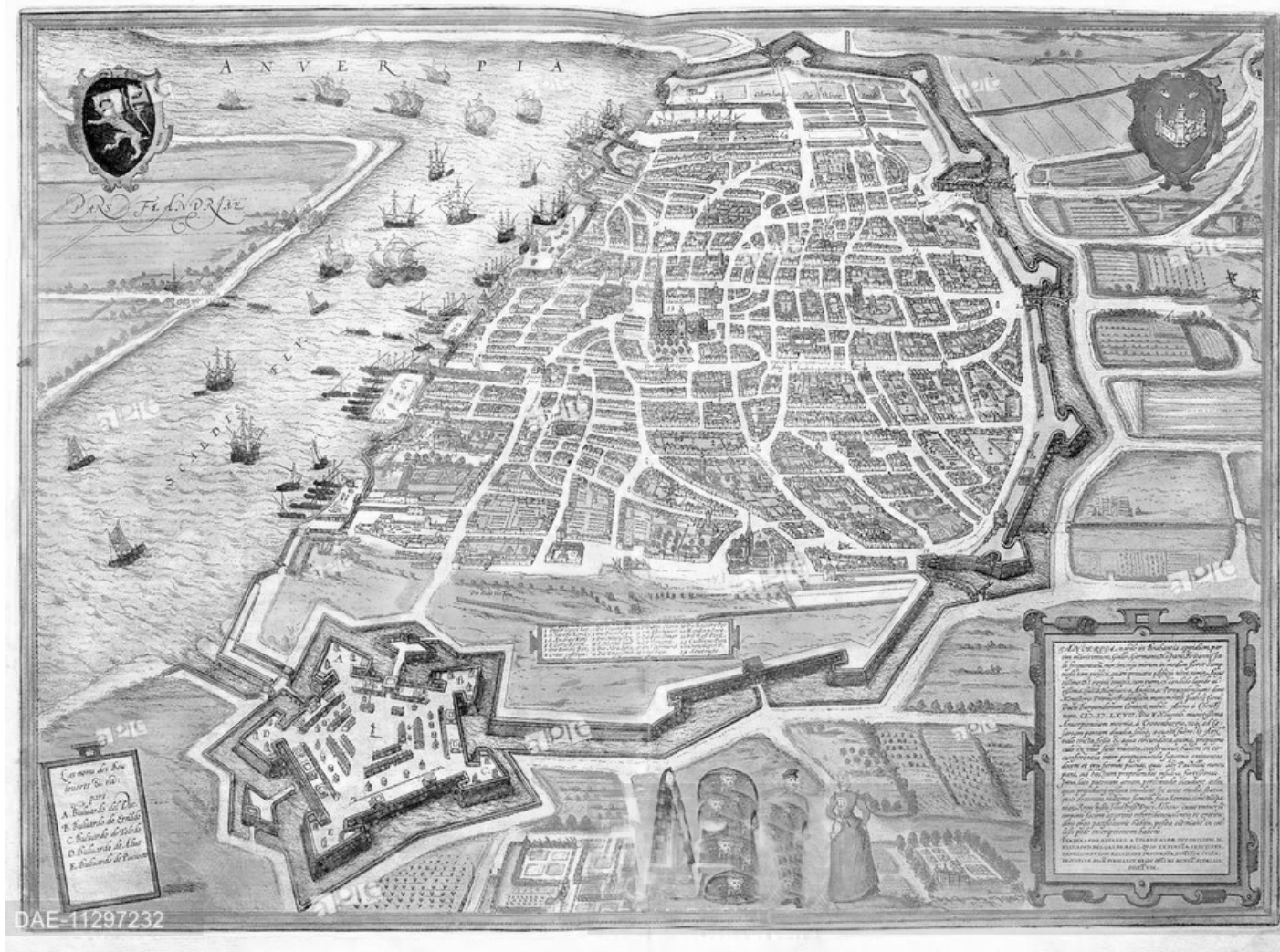
## INTRODUCTION



1789, Samuel Slater designed the Wool spinning machine

# II

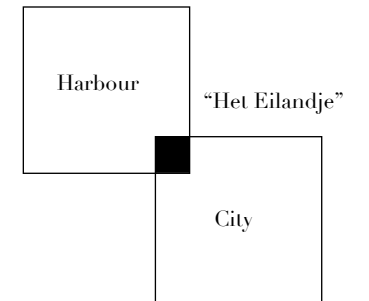
HISTORY



1800, Antwerpen, an international seaport



1800 - 1930 , Industrial revolution, “Het Eilandje”

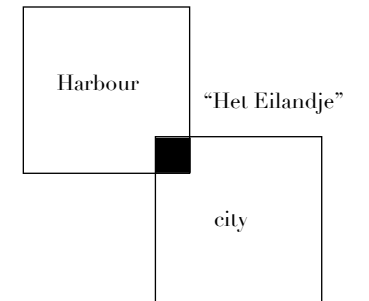


1930-1970 , The great leap northwards

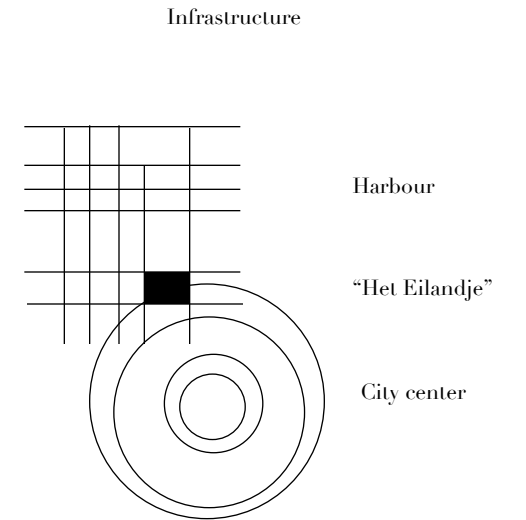
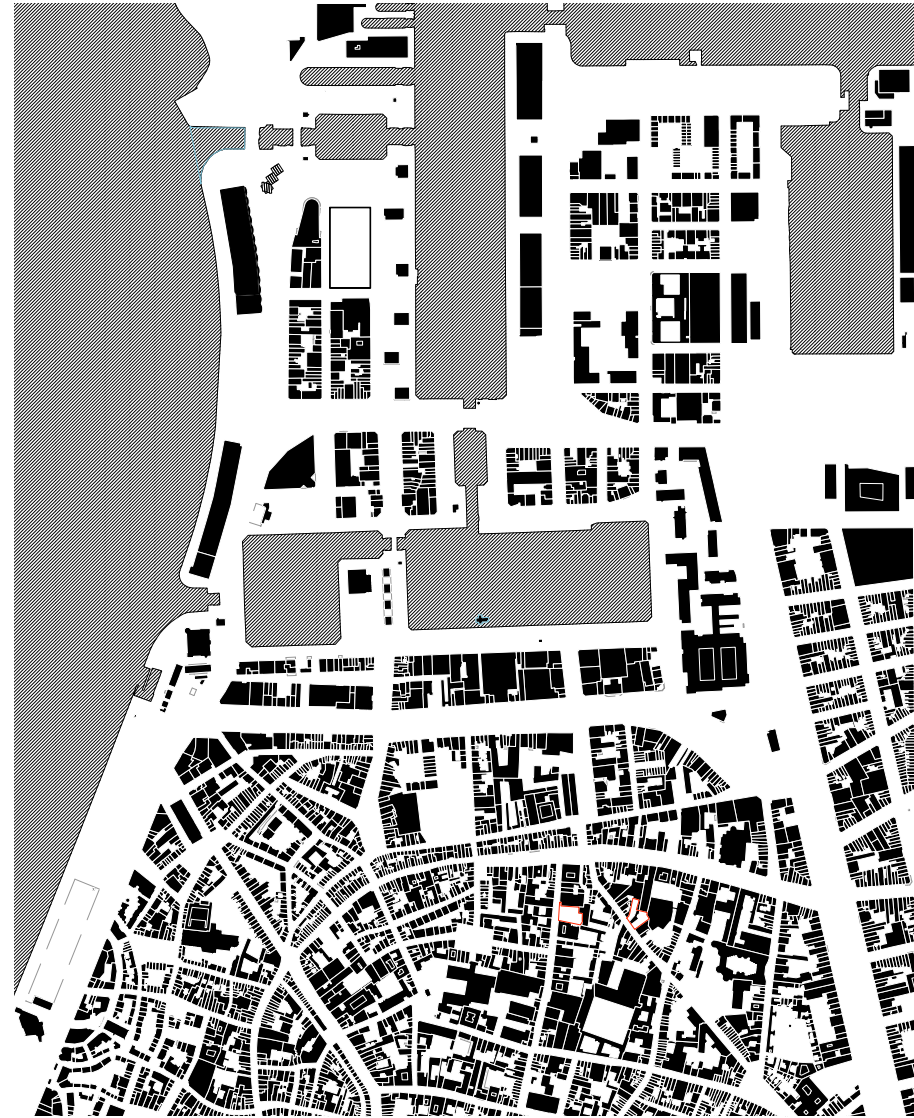


**II | I**

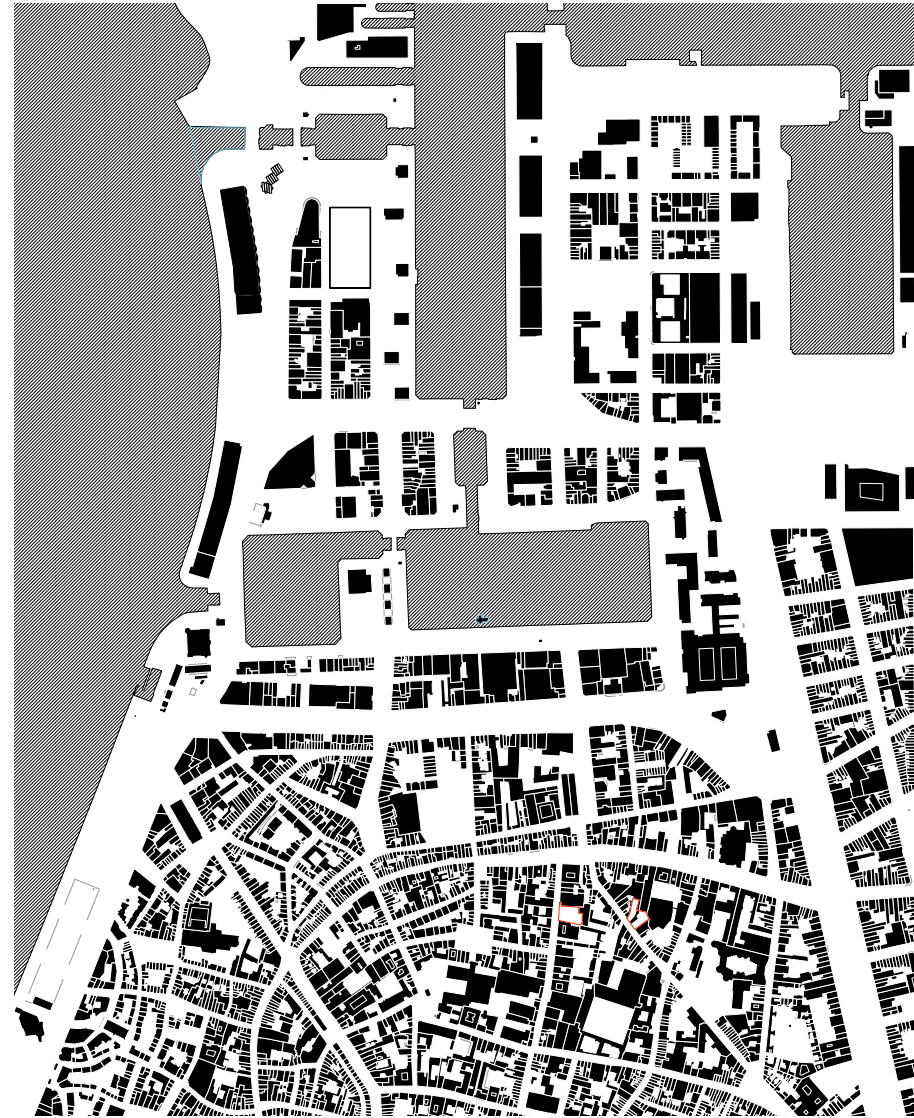
“HET EILANDJE”



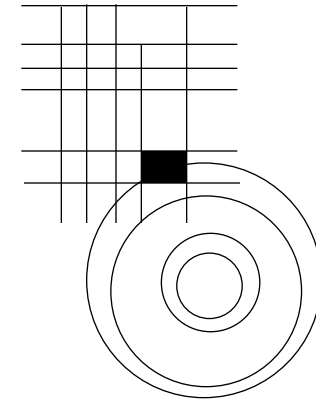
20th century, "Het Eilandje" barrier between port and city



Analysis of the urban fabric



Infrastructure

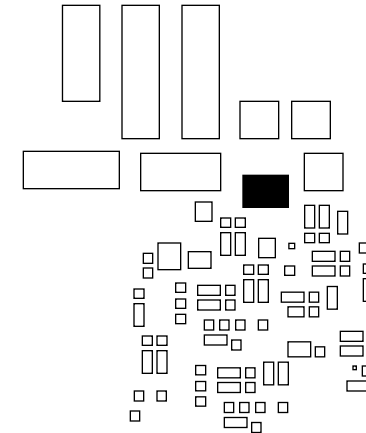


Harbour

“Het Eilandje”

City center

Mass



Harbour

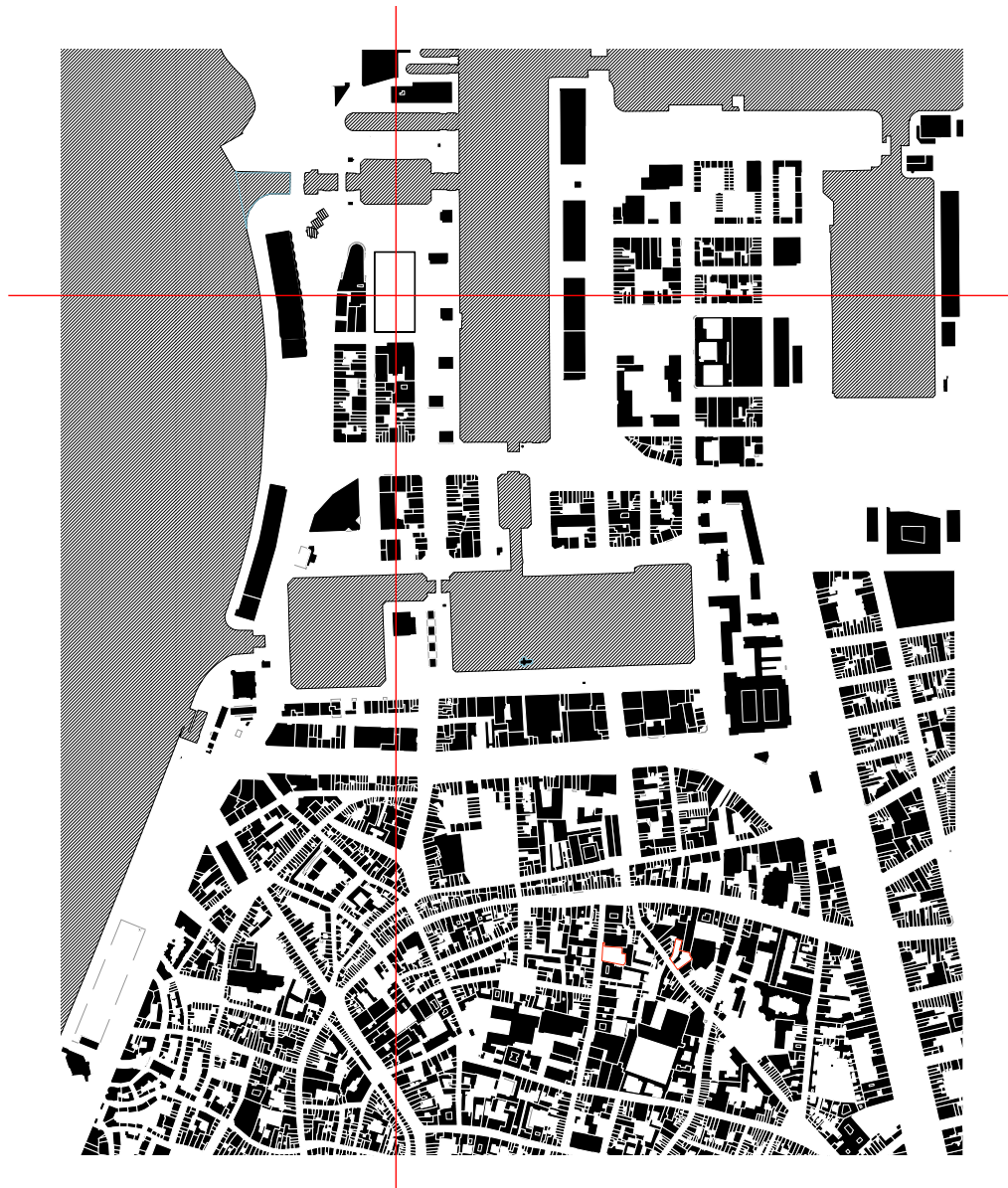
“Het Eilandje”

City center

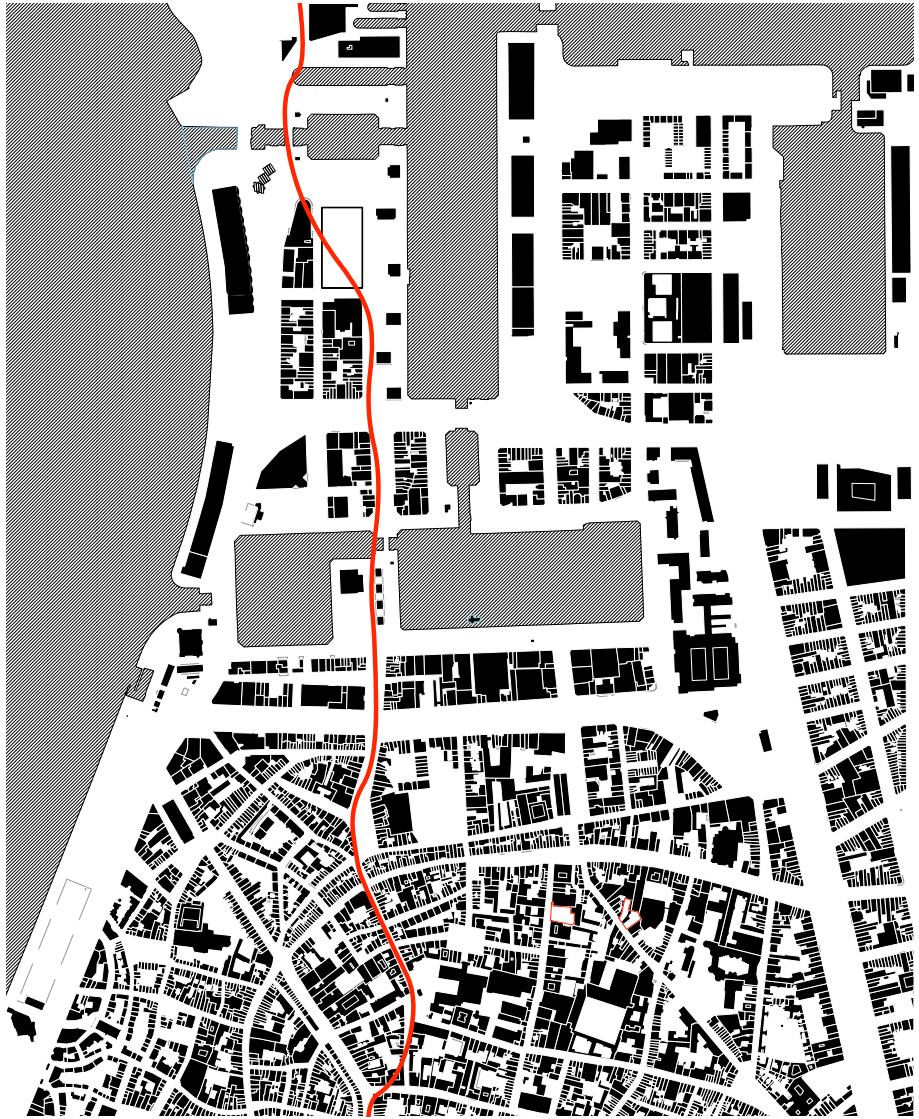
Analysis of the urban fabric

**II | II**

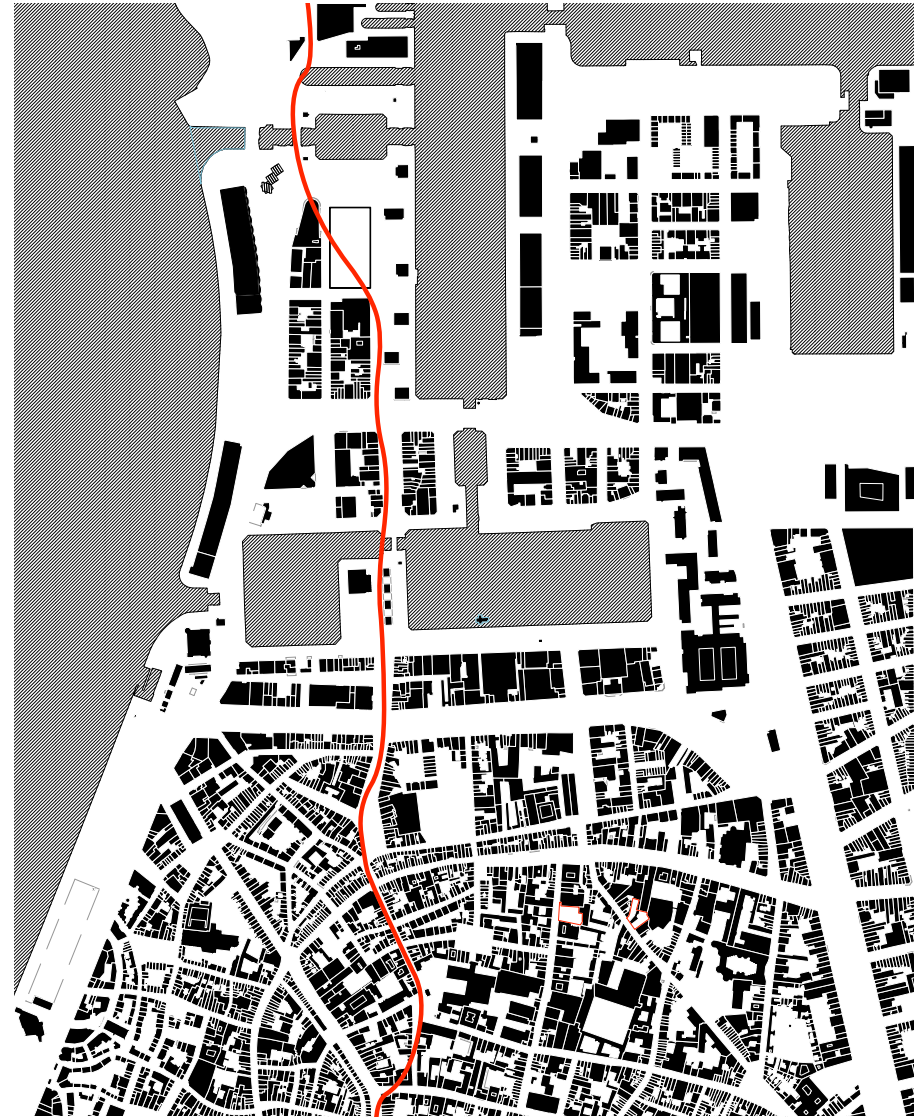
MONTEVIDEO & INTIMATE CITY



Analysis of the urban fabric



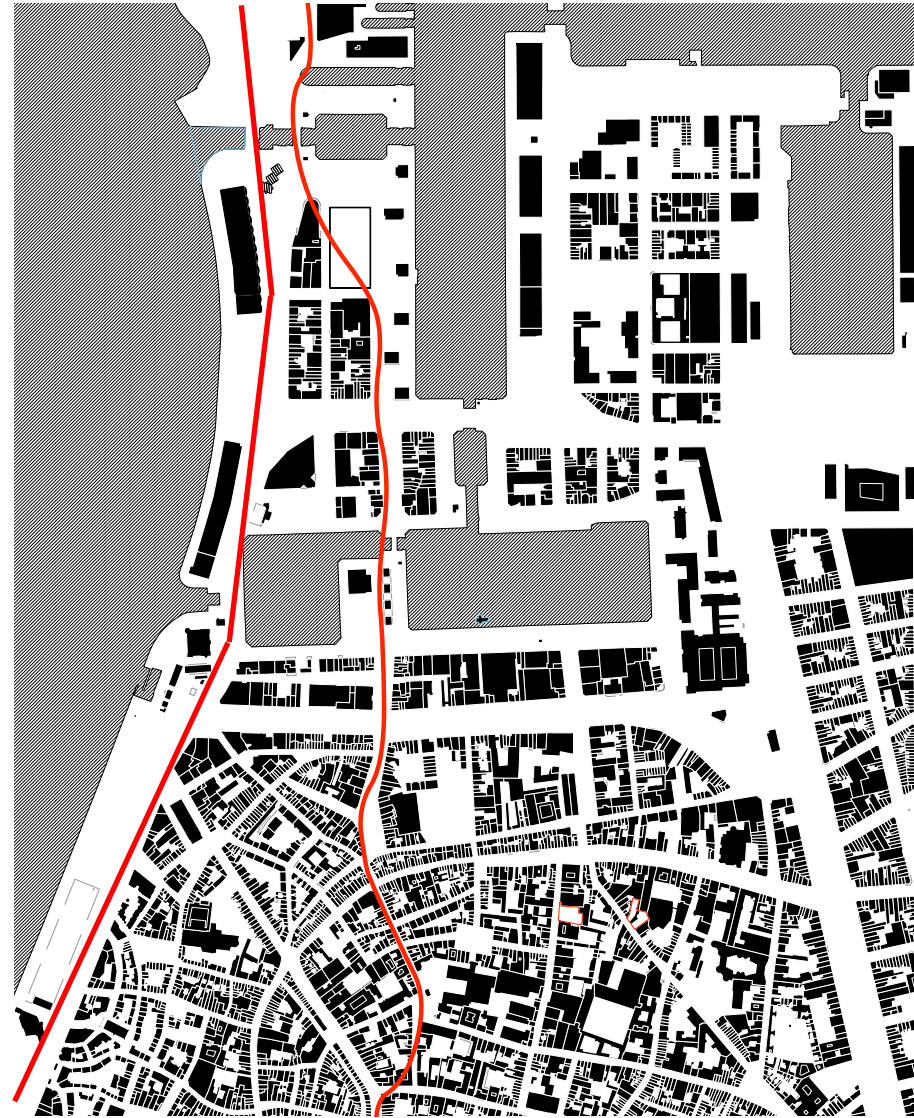
Cultural axes from North to South



- Maritime Museum
- The shop
- Red Star Line Museum
- Royal Ballet of Flanders
- MAS & MAS's square
- Prostitution
- Falconplein
- Royal Academy
- Cathedral
- Historical center

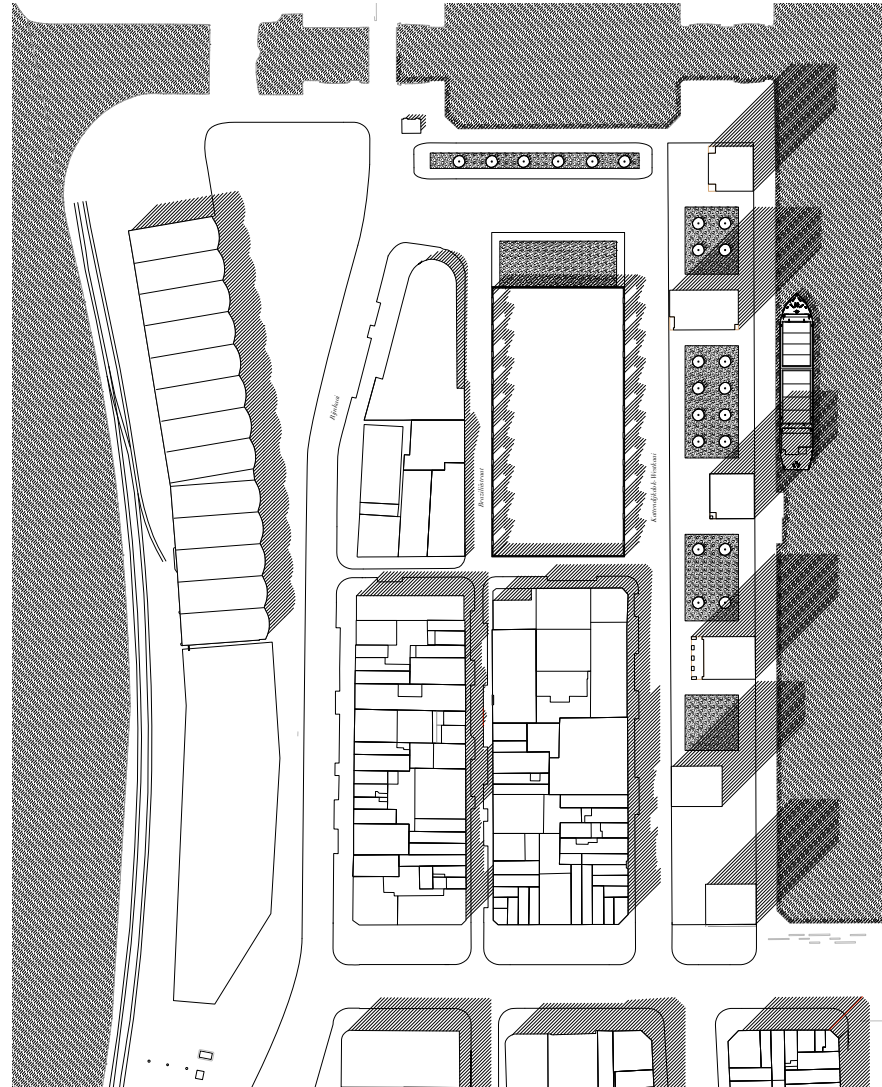
Cultural axes from North to South





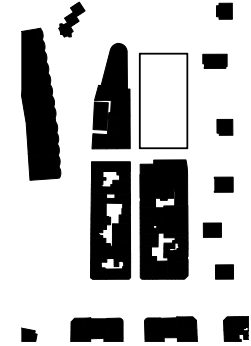
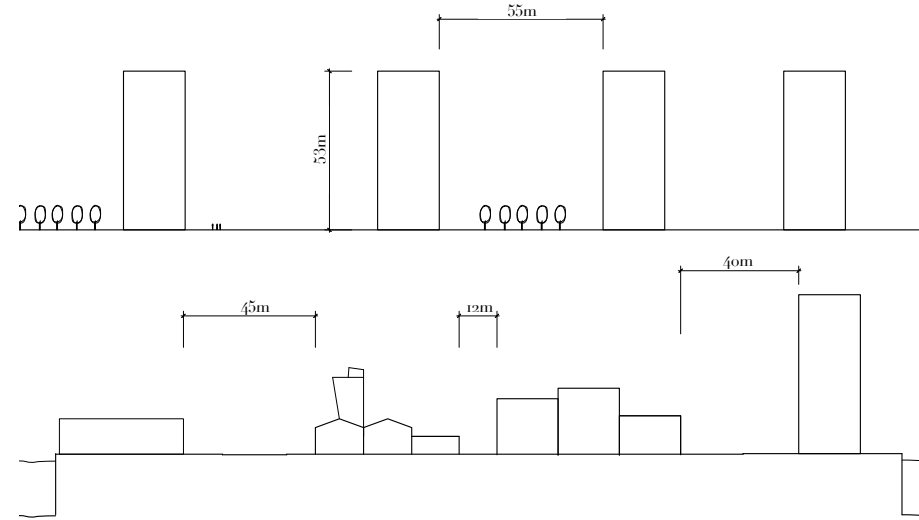
- Maritime Museum
- The shop
- Red Star Line Museum
- Royal Ballet of flanders
- MAS & MAS's square
- Prostitution
- Falconplein
- Royal Academy
- Cathedral
- Historical center

Cultural axes from North to South & The Scheldt Quays

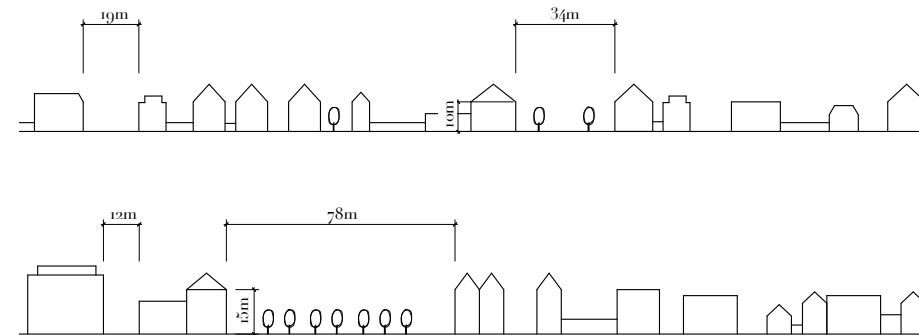


Massing plan, Montevideo island

Montevideo island

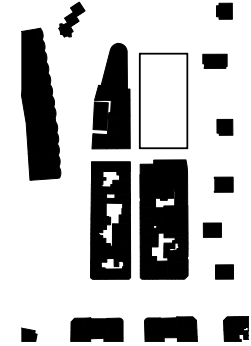
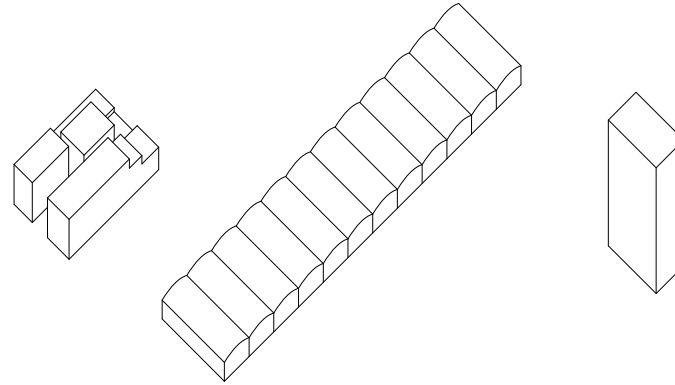


Antwerpen city center

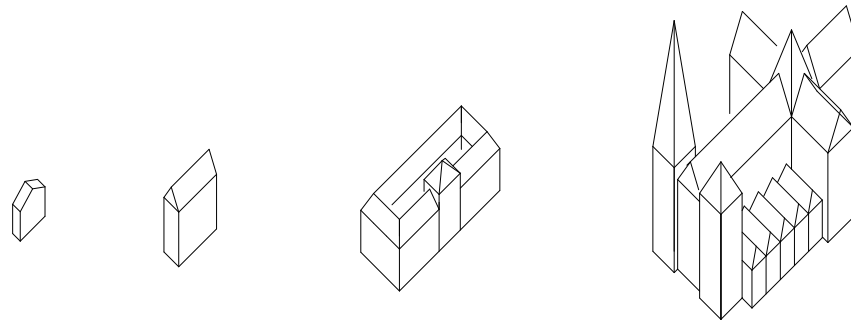


Proportion between mass and void

Montevideo island



Antwerpen city center



Hierarchy of the buildings and its relation between mass and void

**II | III**

SITE AND PROGRAMME



Original Montevideo Warehouse, 1895



Montevideo Warehouse, 2019

## Architect Chris Poulissen dreams of lively Eilandje Cinema in Montevideo warehouses

22/06/2008 @ 00:00 by Kris GOOSSENAERTS - [Foto](#) - [Contact](#)



The architectural firm hopes to revive the old warehouses with, among other things, a large indoor market.

ANTWERP - The Antwerp architect Chris Poulissen is looking for financial backers to develop the former Montevideo warehouses on the Eilandje into a lively hub with a cinema, a fitness center and a covered market. "We have to make sure Eilandje is not a sleep city but a new bustling city district. That's why we prefer not to have offices, as planned."

The Montevideo warehouses date from 1905 and are no less than 12,000 square meters in size. They are the heart of Het Eilandje. Maritime companies in particular were hoping to take out the warehouses, to turn them into offices. The character of the protected monument would disappear. Monuments and Landscapes therefore vetoed the plans.

The investors then went to the architectural firm Chris Poulissen & Partners to draw a new future for the site. The designers already warned that space with the development of hangar 26-27. Poulissen is now looking for investors to expand the Montevideo to the beating heart of Het Eilandje.

"There must be movement there seven days a week, even in the evening and at night," explains Chris Poulissen. "We are therefore looking for an integration that fits the new outdoor area with the Museum aan de Sijpe (MAS), the Red Star Line, the Ballet of Flanders and the plans with the shop." "The investors in that old recruitment center for dock workers want to create a catering business out of the ground. Covered market. The core of Montevideo is to become a covered multicultural market of 2,000 m². "Het Eilandje has a great need for nutrition. We do not think of a supermarket but of a covered market like in Barcelona, with a number of permanent stalls, a bit like the Croix used to be at the station, but with a better quality."

Underground parking and a cinema would come. "It will be in the format between the Cartoon's and the UCC." There is also room for a fitness center, a hotel, small-scale catering, childcare and even for a mail sorting center.

The special plan of construction (BPA) allows almost all destinations, except companies that are annoying for the living environment. For Poulissen's ideas, a change of destination is not necessary and everything can go ahead. "We hope to build in early 2008. In 2009 everyone can come to the cinema."

**ELECTIONS**

STEM  
JOUW FAVORIETE CAFE TOT  
HET BESTE CAFE VAN VLAANDEREN

STEM NU >

**NET GEMEENTE RAPPORT**

Bekijk het rapport van  
jouw gemeente

Vul je postcode in:

GA VERDER

### YOUR MUNICIPALITY

VIDEO: A haircut in a  
showroom of furniture

New entrance gates  
Trade Street get Arabic  
motifs

ALL THE NEWS FROM YOUR MUNICIPALITY

**Tens of Ryanair destinations  
today to book for less than 5  
euros: are there any snags?**

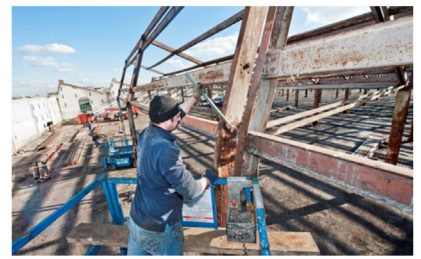
### NEIGHBORING MUNICIPALITIES

Do you have more news from your municipality?  
Mail to @ [nieuws@stad.be](mailto:nieuws@stad.be)

### Two parking levels

In a first plan, architect and great promoter Chris Poulissen saw four underground levels in which there was room for a supermarket and cultural halls, but that proved difficult to achieve in terms of technology. With two parking levels the underground circulation becomes easier and two large lift and staircases suffice.

Above ground the original cachet of the sheds can be kept intact. These are eleven identical warehouses with translucent sawing roof, which will come onto the market as separate office, business or cultural units.



### New construction

Following the restoration of the Montevideo warehouses, a new building will be built on the Limplein. In this arc-shaped wooden façade-based restored facade-walled structure of four storeys, dwellings, with catering and services on the ground floor, mainly come.

"We are building in one go, so that everything can be ready in early 2013", says Chris Poulissen, who drew the first visionary plans almost ten years ago. A good timing, because in 2012 the Red Star Line Museum will be running at full speed next door and all streets around the Kattendijkdok will be redeveloped.



**Architect Chris Poulissen dreams of lively Eilandje  
Cinema in Montevideo warehouses**

22/06/2008 14:00:00 by Kris GOOSSENAERTS - [Print](#) - [Contact](#)



The architectural firm hopes to revive the old warehouses with, among other things, a large indoor market.

ANTWERP - The Antwerp architect Chris Poulissen is looking for financial backers to develop the former Montevideo warehouses on the Eilandje into a lively hub with a cinema, a fitness center and a covered market. "We have to make sure Eilandje is not a sleep city but a new bustling city district. That's why we prefer not to have offices, as planned."

The Montevideo warehouses date from 1955 and are no less than 12,000 square meters in size. They are the heart of Het Eilandje. Maritime companies in particular were hoping to take out the warehouses, to turn them into offices. The character of the protected monument would disappear. Monuments and Landscapes therefore vetoed the plans.

The investors then went to the architectural firm Chris Poulissen & Partners to draw a new future for the site. The designers already earned their spurs with the development of Margat 26-27. Poulissen is now looking for investors to expand the Montevideo to the beating heart of Het Eilandje.

"There must be movement there seven days a week, even in the evening and at night," explains Chris Poulissen. "We are therefore looking for an interpretation that fits the new cultural area with the Museum aan de Stroom (MAS), the Red Star Line, the Ballet of Flanders and the plans with the shop." The investors in that old recruitment center for dock workers want to create a catering business out of the ground. Covered market The core of Montevideo is to become a covered multicultural market of 2,000 m<sup>2</sup>. Het Eilandje has a great need for nutrition. We do not think of a supermarket but of a covered market like in Barcelona, with a number of permanent stalls. A bit like the Cobo used to be at the station, but with a better quality."

Underground parking and a cinema would come. "It will be in the format between the Cartor's and the USC." There is also room for a fitness center, a hotel, small-scale catering, childcare and even for a mail sorting center.

The special plan of construction (BPA) allows almost all destinations, except companies that are annoying for the living environment. For Poulissen's ideas, a change of destination is not necessary and everything can go fast. "We hope to build in early 2010. In 2009 everyone can come to the cinema."

**ELECTIONS**

STEM  
JOUW FAVORIETE CAFÉ TOT  
HET BESTE CAFÉ VAN VLAANDEREN

STEM NU >

**BEKIJK HET GEMEENTELIJK RAPPORT**

Beijk het rapport van jouw gemeente

Vul je postcode in:

GA VERDER

**YOUR MUNICIPALITY**



ALL THE NEWS FROM



**Tens of today euros**

**Read the entire article in Gazet van Antwerpen - edition City on Tuesday**

Do you have more news from your municipality?

Mail to @ [nieuws@zad.be](mailto:nieuws@zad.be)



**Covered food market in Montevideo warehouses on Eilandje**

03/01/2017 at 08:46 by pvdip

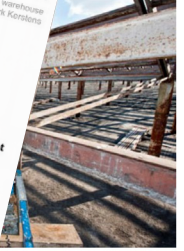
ANTWERP - The Montevideo Warehouses on the Brazil Street on the Eilandje are completely restored. There will be a food market and offices for companies from the creative sector. At the head of the warehouses, on the Limastraat, a new building of the Antwerp architect Philip Mortelmans with apartments and retail space.

Print 516 shares

In 2018 the restoration of the protected site will start. By then, the future and largely car-free Limaplein will be ready next to the new building.

The building permit for refurbishing the Montevideo Warehouses is being requested in March. "This means the end of years of uncertainty about the future of the site. The absence of a new destination for the warehouses was a mortgage on the development of the neighborhood. But that is now over," says the ships for Urban Development Rob Van de Velde (N-VA). A parking garage for more than 300 cars will be placed under the foodmarket and the offices in the former warehouse. The ships hopes that there will be candidates to open a supermarket there.

The restoration of the warehouses and the new construction on top of the site will take about two years. The expected delivery date is 2020. "The Montevideo implementation will give the district a significant boost. More and more people are coming to live there. Among other things, in the new residential towers along the Kattendijkdok there will be a lot of new people in the coming years", says Van de Velde.



Montevideo warehouses Photo: Dirk Kerckhove

our underground levels in which there will be a cinema, a fitness center and a covered market. "We have to make sure Eilandje is not a sleep city but a new bustling city district. That's why we prefer not to have offices, as planned."

act. These are eleven identical warehouses that will be used as separate office, business or cultural space.

warehouses, a new building will be built on the Limplein. It will be a red facade-walled structure of four storeys, dwellings, with mainly come.

thing can be ready in early 2013", says Chris Poulissen, who started the project years ago. A good timing, because in 2012 the Red Star Line was built next door and all streets around the Kattendijkdok will be widened.

architecture

# M2 ARCHITECTS DESIGNS NEW LANDMARK FOR HET EILANDJE

10 January 2017



After years of uncertainty, there is now an interpretation for the Montevideo district. That reports HLN.be. "The plans are not yet final but there is finally an engine in the file", says Rob Van de Velde. "One of the things that the neighborhood really needs to fizzle is more basic facilities, which is why we want to be in the well-known halls, a permanent, covered food market or fresh market."



The architectural market.

ANTWERP - Backers to a lively hub have to make city district.

The Montevideo is also: They are the out the warehouses, would disappear. Mo

The investors then see, future for the site. The 1:26:27. Poulissen is now of het Eilandje.

"There must be movement, explains Chris Poulissen. outdoor axis with the Museum Flanders and the plans with workers want to create a cafe. Montevideo is to become a co great need for nutrition. We do Barcelona, with a number of pe but with a better quality."

Underground parking and a cinema is cartoon's and the UCC. "There is also catering, childcare and even for a mall

The special plan of construction (BPA) are annoying for the living environment. If necessary and everything can go fast. "It can come to the cinema."

Het Eilandje is in full development: in 2010 there were still 1,000 people, than in 2020 there will be no less than 6,600. Yet there are still parts that are silent.

In order to make the project on the Montevideo site with retail and catering services financially possible, offices and a residential new building will also be built.

"We had a number of different goals in mind: starting with a real eye-catcher when you enter Antwerp through the North, so we have signed a new building with retail and catering spots but on top of that there is room for 24 to 30 houses with a view of the new. This should also be the beating heart of the district, we also plan a large awning with a semi-public space and there will also be a lot of offices", says architect Philip Mortelmans of M2 Architects.

If everything goes well, the building permit will be submitted in April.

Picture: M2 Architects



GVA +

our underground levels in which there difficult to achieve in terms of technology, riser and two large lift and staircases

act. These are eleven identical warehouses that as separate office, business or cultural

## t in ses on

Montevideo warehouse Photo: Dirk Kerckhofs



Print 516 shares

ndje are ies from the building of

aplein will

warehouses, a new building will be built on the Limplein. In ored facade-walled structure of four storeys, dwellings, with mainly come.

thing can be ready in early 2013", says Chris Poulissen, who years ago. A good timing, because in 2012 the Red Star Line ext door and all streets around the Kattendijkdok will be

ake about two years. ings, in the new residential towers coming years", says Van de Velde.

dition City on Tuesday

**ANTWERP - In the autumn, the construction of the Limaplein on the Eilandje will start. It will probably become a largely car-free area.**

The Limastraat at the northern head of the Kattendijkdok-Westkaai will be transformed into a square. It will probably be the largest in Antwerp after Sint-Jansplein.

"The Lima Square has to become a lively event square that will be largely car-free. It starts at the Stadsontwikkeling Rob Van de Velde (N-VA).

**Art and terraces**

The square will be located right next to the Monteideo warehouse and the Shop on the Rijnkaai. In this former recruitment room for ship repairers, there is now a restaurant and a dance venue.

"We want the square to live. There will be room for art that refers to the port history of the neighborhood and there will be places to sit. We hope and expect that new catering will come and that people can enjoy a terrace in the square. It is also the intention that events are organized on the square. Which ones are not yet known. But it will be temporary initiatives," explains the ships.

**Custom driving directions**

The construction of the square also changes the street pattern and the driving directions in the neighborhood. Kattendijkdok-Westkaai continues to reach in two directions. Along the dock there is a walking zone in blue stone. It must complete the boulevard along the dock edges.

The Limastraat changes to ankle direction from east to west. This allows the traffic to run in a loop around the Monteideo warehouses.

- The Rijnkaai-Monteideostraat intersection will be modified so that driving out and turning right is possible for cars, trucks and touring cars.

**Read also:** [Covered food market in Monteideo houses on Eilandje](#)



The old cobblestones in the Limastraat are being replaced by a largely car-free square. Photo: Dirk Kerstens

**LANDMARK FOR HET**

the Monteideo district. That reports e in the file", says Rob Van de Velde. more basic facilities, which is why we market or fresh market."



HLN NIEUWS SPORT SHOWBIZZ INTRA REGIO VIDEO  
 POPULAIR OP REGIO RIJS UN GEWENTE ANTWERPEN  
**Monteideo pakhuis wordt supermarkt**  
 24 mei 2018 | 02u53  
 DEEL Twitter

Het beschermde Monteideo pakhuis staat al jaren te verkrommen, maar supermarktketen Lidl zal er na renovatie een winkel van 2.000 vierkante meter openen. Projectontwikkelaar DCA gaat het pakhuis met respect voor de originele onderbrengen. De Lidl-supermarkt komt daartoe, op min één. Nog een verdieping lager zal plaats zijn voor 280 wagens in een ondergrondse parkeergarage.

Aan het pakhuis zal ook een woontoren worden met 16 luxeappartementen, die een open ruimte en een privézwembad. De vier dakappartementen krijgen naast van DCA ruimte met terras. De totale kostprijs voor het project, betekend door M2 architecten, bedraagt 35 miljoen euro.

dankzij een goede samenwerking met schepen van Stadsontwikkeling de Velde en de dienst Monumentenzorg en het talent van architect 'mans dat dit aanslepende dossier na al die jaren nu toch stilaan tot 'resultaat komt', zegt Franca Vrancken, gedelegeerd bestuurder het voorjaar van 2021 moet het hele Monteideo project klaar

'EN VRANCKEN ECONOMISCHE SECTOR  
 on Tuesday  
 IMMO IN DE REGIO

**MEEST GELEZEN OP HLN**  
 1. Nieman...  
 2. VA migratiepact...  
 3. "Weet een cadaver"...  
 4. De Nederlandse...  
 5. Bart De Wever...

**VOLD HLN ANTWERPEN**  
 THE PULSE  
 Moving Monsters, Avoiding Blind Spots  
 Study the... CLASSIC... MOVE into...  
 "STAIN" GAF...



The Golden years of the harbour's industry

**Antwerpen Maritime academy**

In the field of:

- Hydrography
- Commercial Yachting
- Nautical sciences

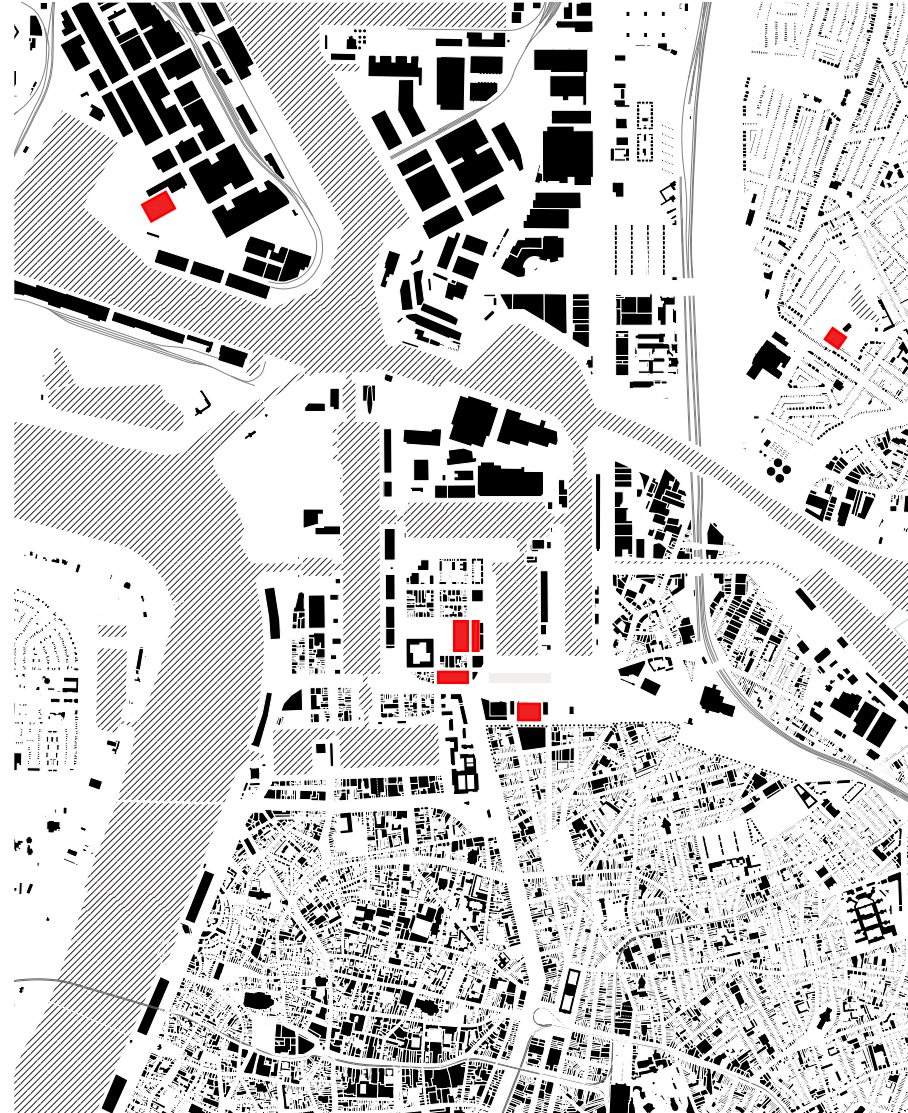
-> Maritime

**Stedelijk Lyceum Merksem**

In the field of:

- Audio visual
- Word art Drama
- Visual Arts
- Graphic Media
- Multimedia
- Photography
- Stage Technique
- Hair Care
- Print media Press

-> Digital art



**Campus Stella Marisstraat**

In the field of:

- Catering

-> Catering

**Technicum Bovenbouwschool**

In the field of:

- Car mechanic
- Decorator
- Jewellery
- Electricity
- Medical

-> Mechanics

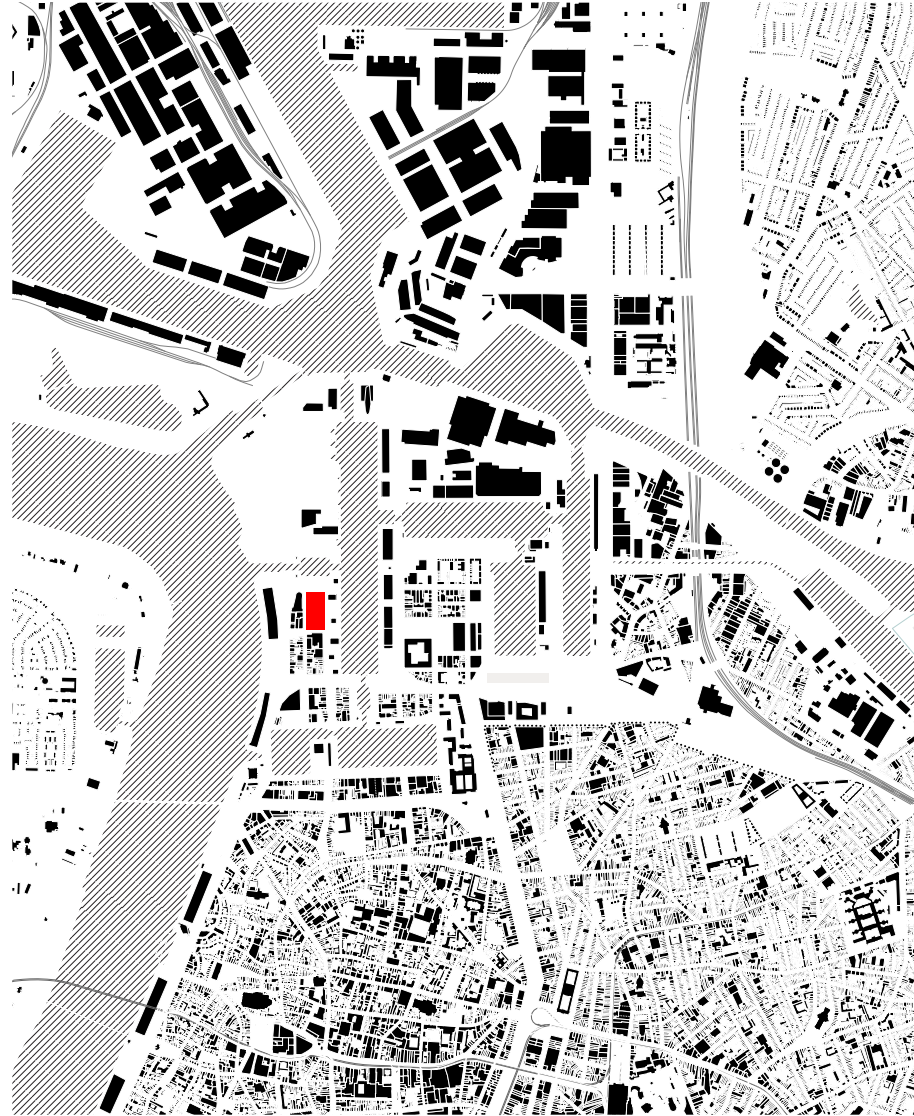
**AP Hoogeschool**

In the field of:

- Digital system and Networks
- Computer Programming
- Work Organization
- Electromechanical systems
- Internet of things
- Technical maintenance
- Measurement and Control

-> IT

Existing technical schools in the surroundings



**Montevideo NEW CRAFT CENTER**  
In the field of:  
- Building construction (Wood, Metal, Massonry)

Montevideo warehouse the NEW CRAFT CENTER



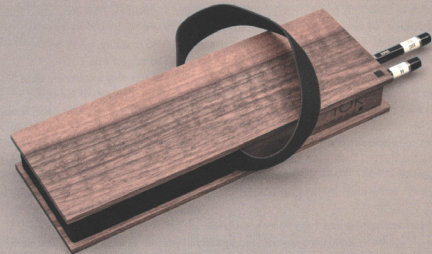
The craftsman's evolution with the technology of nowadays

Speak

## TOK-CONCEPT

Words & Images Rogier Bos

Along with my architectural studies, the last couple of years I have also become a young entrepreneur running my own small business. It was my architectural background that allowed me to think beyond the design phase. Producing and bringing to the market a sustainable and socially oriented product that comes out of a local small-scale production is the whole mindset on which TOK-concept is established upon.



24

It all started the day I broke the zipper of my long-established leather pencil case.

As an architecture student, a pencil case has become my everyday buddy I take everywhere with me, wherever I go. But in Spring of 2014 my old pencil case's zipper stopped going back and forward. At that moment, I grabbed my sketch book and started to design my own pencil case. I decided to go for a wooden design, as within my Bachelor workshop at the university in Switzerland, wood was the only material available and was the one I had the most knowledge on how to work with. After several prototypes including a hinge, push button, drawer or a lid, it appeared to me that none of them were convincing. Therefore, I chose to go for the most minimal concept: a box without technical pieces to make it work and a hair band that I could borrow from my sister.

After a couple of months of personal use, I got a lot of positive feedback on my creation, questions and even a couple of requests for orders. This gave me the idea of taking my pencil case design and making a product production.

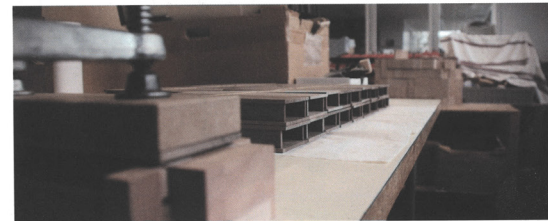
At that point, plenty of basic questions came into my mind like: 'how do I deal with a bigger production?', 'how much funding do I need?' and 'how and where am I going to sell my products?'. I had a small chat with a friend in the professional field who told me:

*"Take a bit of your savings and make a bunch of them. The risk you take is minimal. Just do it!"*

Both the adrenaline and the fear helped answer my questions, step by step with the process. I paid a visit to a carpentry workshop to get more information from a professional on how to bring my product into manufacture, knowing that it would be a small scale production. The TOK-case had to be glued, its band should be sewed and then had to be oiled as a whole piece. I discovered that it would be impossible for a young entrepreneur like me to arrive at the final product with each of these steps being accomplished by individual professionals, as the cost of the production would have been too high for such a small amount of products.

However, the carpenter - within his network - immediately sent me to a 'social workplace'. This place brought together craftsmen from different fields under the same roof and were assisting people with special needs to take part within the professional life. The perfect space for my TOK-case! Thus, the product got not only a social character, but was locally made with a local material - which, in my opinion, are significant aspects of a product's design that should be taken into account nowadays.

Together, we worked as a team, including the head of the workshop, to design the last elements to make the production efficient. One month later I dropped by the factory and saw tree trunks coming in, the whole chain of production from A to Z was revealed in front of my eyes. Very soon, my final products were stacked and ready to be sold.



25

Combination of young entrepreneurs and students



## CONVOI Antwerpen, Temporary space for Pop-up stores

Pop-up shopping areas that feature young and upcoming brands are obviously the new black. Think of for instance Boxpark London and Downtown Container Park Las Vegas. Fashion hub Antwerp couldn't lag behind any longer, of course. The result: container shopping village Convoi Antwerp, which has been built in the shadow of famous tourist attractions such as the MAS and the Port of Antwerp. Convoi Antwerp will be popping up for no less than two years!



### Young entrepreneurs

Convoi Antwerp focuses on supporting **young, creative entrepreneurs** who not only offer a product or service, but also serve and especially lots of inspiration. The 45 shipping containers make **Convoi Antwerp** the **new urban shopping destination**. Convoi wants to attract 450 entrepreneurs every year in order to offer an **eclectic mix of products**, from start-ups to established labels and bigger brands. A pop-up store at Convoi is the perfect way for entrepreneurs to test their market without taking too many risks.

### Dynamic meeting point

Convoi is located at 't Eilandje, a neighborhood in Antwerp that can finally make the district the **sound super fun?** Convoi is a **dynamic meeting point** where they hope that **creative entrepreneurs** will find their place.

**Antwerpen, booming startup city**

Antwerpen bruist van innovatief ondernemerstalent en is vandaag een echte hotspot voor startups en groeiende bedrijven. Zo telt de stad al meer dan 350 startups, tientallen groeiende bedrijven die 500.000 euro kapitaal ophaalden, tal van incubatoren, acceleratoren en andere startup-initiatieven.

## GAZET VAN ANTWERPEN

WEDNESDAY 10 OCTOBER 2018 | Editie STAD

**HOBOKEN**

**Kruisje voor aangereden dochter weggehaald en niemand weet van iets**  
p. 23

**FAMILIE TEKENAAR POM OPGEJUCHT**  
**'Piet Pienter en Bert Bibber' alsnog in verkiezing beste strip**  
p. 25

**ONTSNAPPINGSSPEL**  
**'Out of the box' komt naar Antwerpen; bevrijd jezelf binnen het uur**  
p. 11

## Antwerpse StartUp Village moet vierhonderd jobs opleveren

### Goedkoop huren voor startende ondernemers

**De stad Antwerpen gaat een dertigtal jonge technologiebedrijven de kans geven om een goedkope start te nemen in een StartUp Village.** Het bedrijfcentrum vindt onderdak in het vroegere onderwijshuis in de Lange Gasthuisstraat 29, vlak bij het centrum.

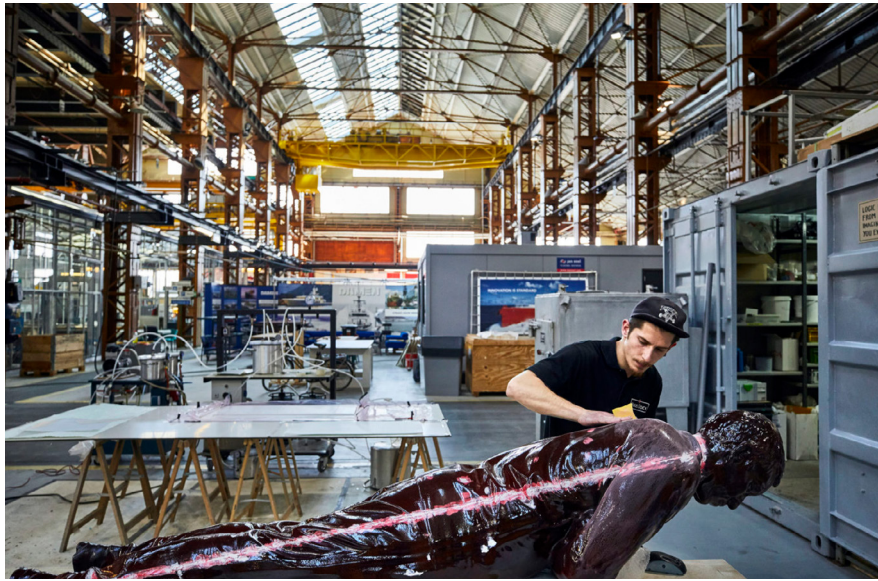
Antwerpen zal in de StartUp Village een dertigtal jonge technologiebedrijven de kans geven om een goedkope start te nemen in een StartUp Village. Het bedrijfcentrum vindt onderdak in het vroegere onderwijshuis in de Lange Gasthuisstraat 29, vlak bij het centrum.

De stad Antwerpen gaat een dertigtal jonge technologiebedrijven de kans geven om een goedkope start te nemen in een StartUp Village. Het bedrijfcentrum vindt onderdak in het vroegere onderwijshuis in de Lange Gasthuisstraat 29, vlak bij het centrum.

**Nog 1000 TIS**  
**GOED GEZIE**  
**GRATIS MONTUUR**

**VAN GEBORTE TOT VERBODING**  
**Stad mailt documenten nog voor u ze zelf vraagt**

**Wist je dat...**  
**de meeste van onze 220 Spar winkels op ZONDAG OPEN zijn.**

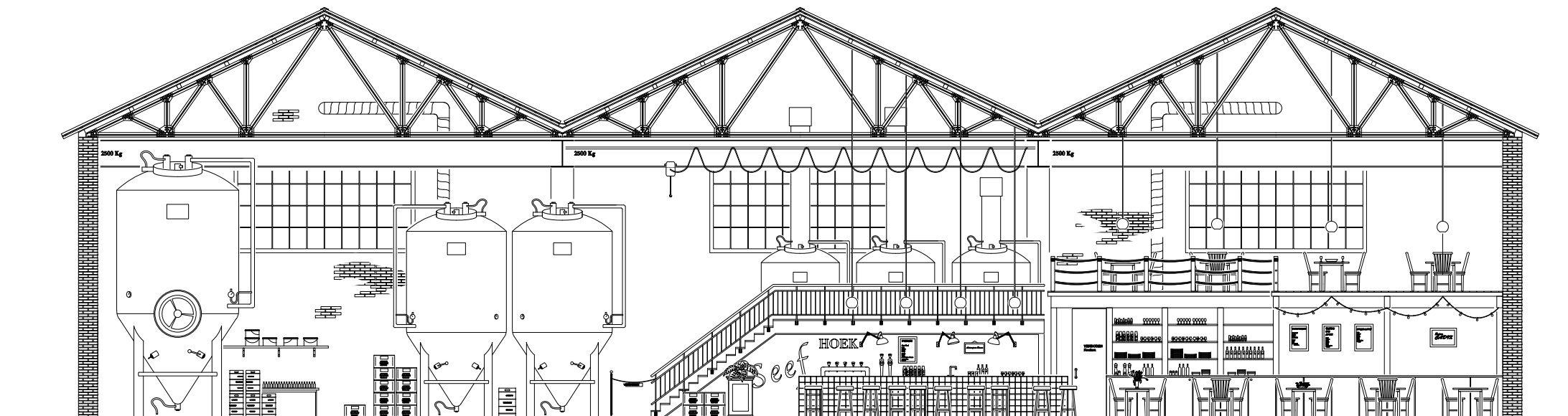


RDM Campus, Rotterdam

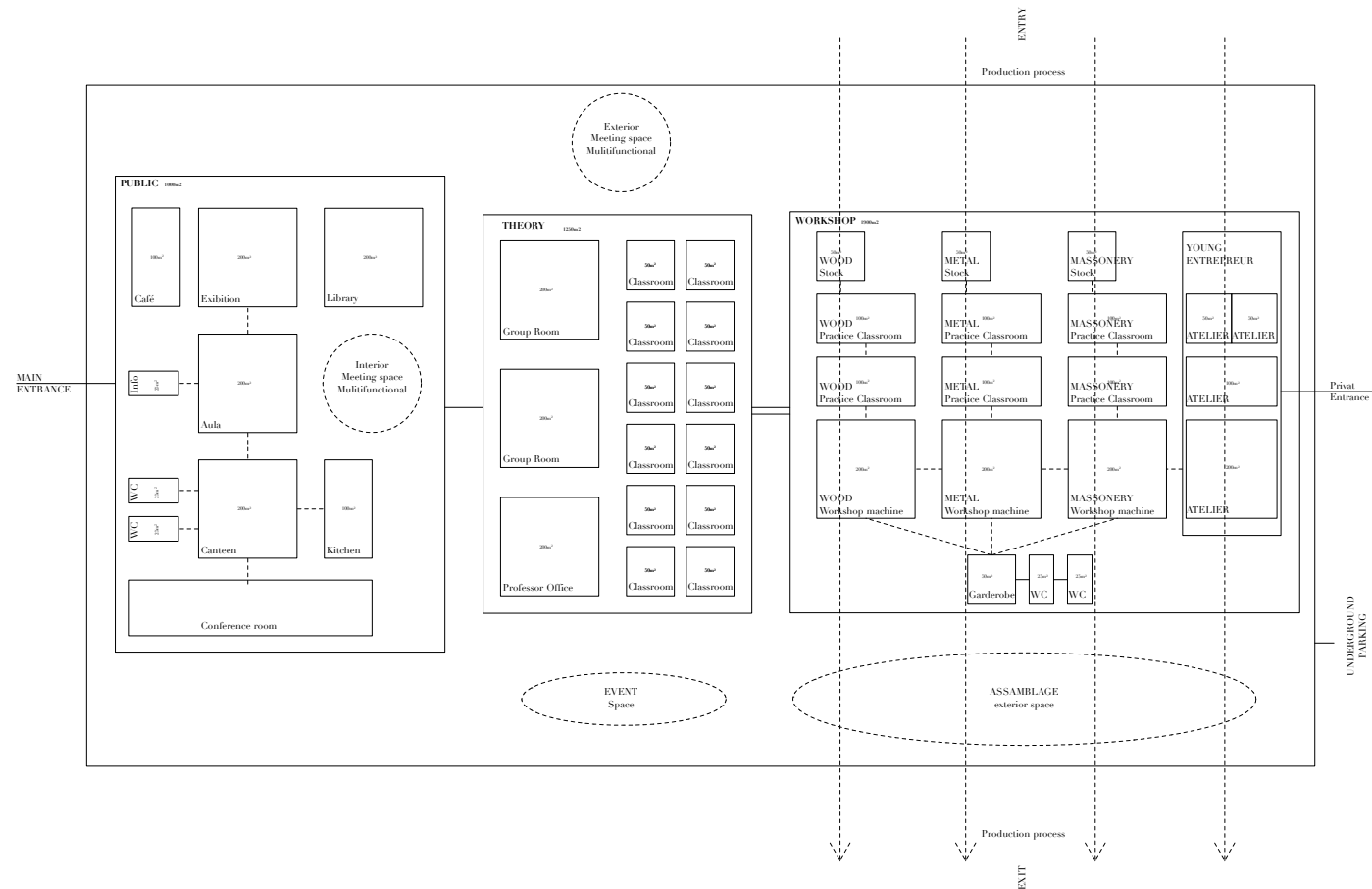


Kabelfabriek, Delft

Case studies

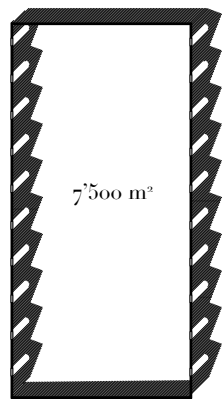


Coupe Anatomique, "Seef Hoek Brewery", Eilandje

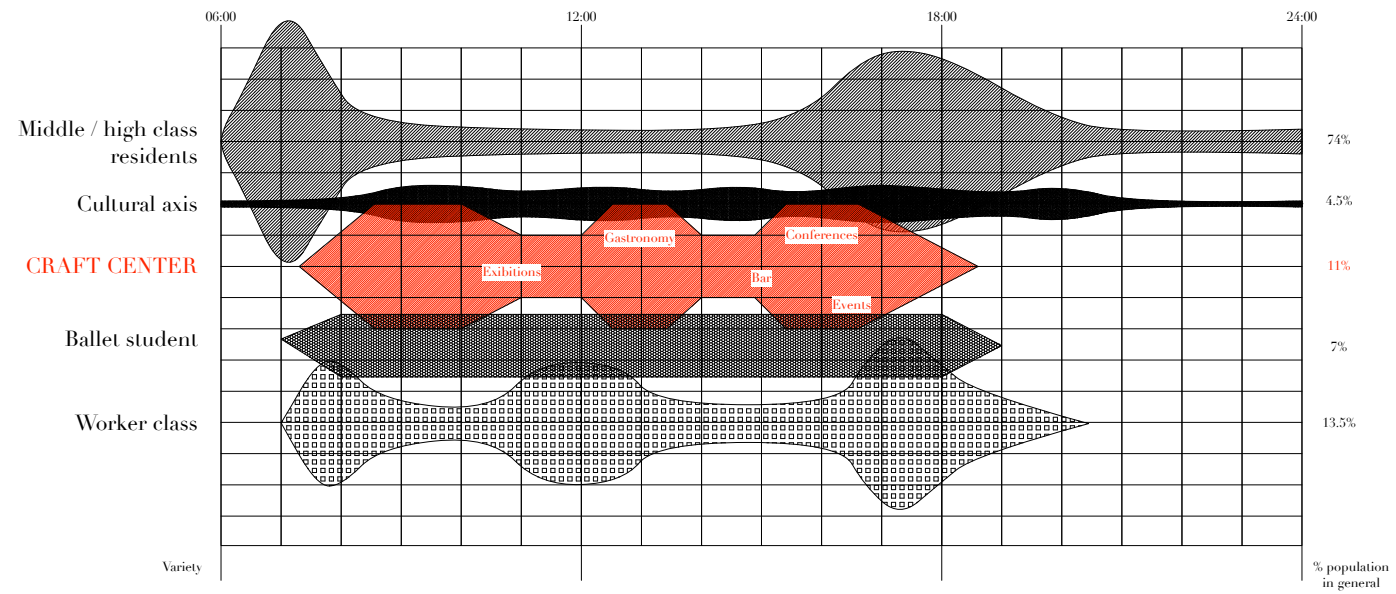


**CRAFT CENTER**

<b>Public</b>	1'800 m <sup>2</sup>
<b>Theoretical</b>	3'000 m <sup>2</sup>
<b>Workshops</b>	4'000 m <sup>2</sup>
<b>Atelier</b>	1'500 m <sup>2</sup>
<b>Parking</b>	6'000 m <sup>2</sup>
<b>TOTAL</b>	<b>16'300 m<sup>2</sup></b>



Programme

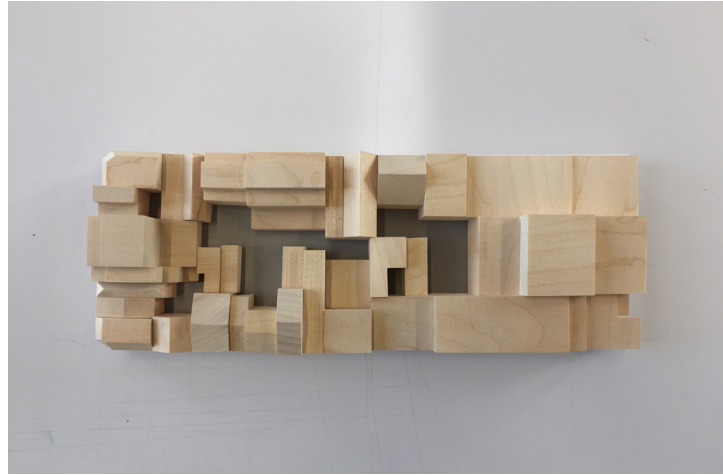


Graph of the Montevideo Island's users

Source : BKP/AR Stad Antwerpen

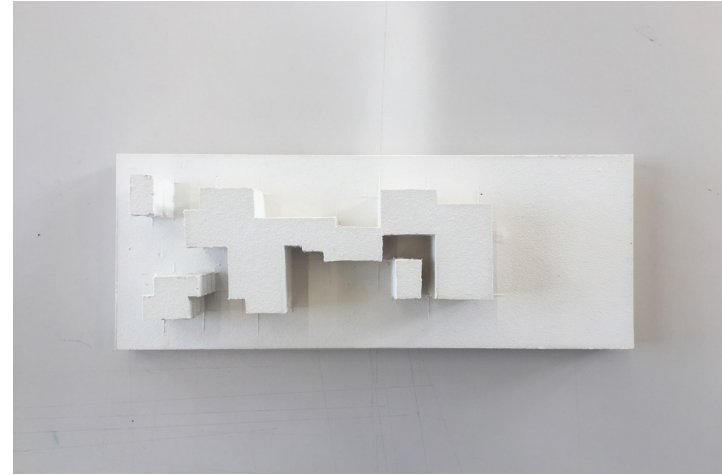
# III

DESIGN CONCEPT



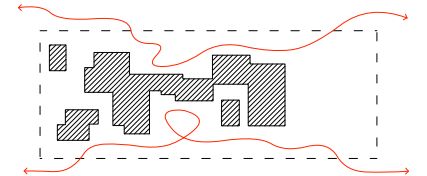
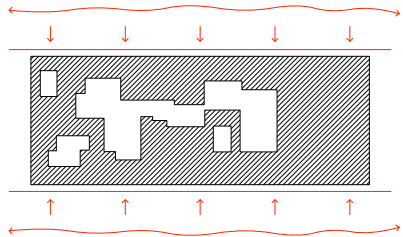
Mass

Barrier between Public and Private

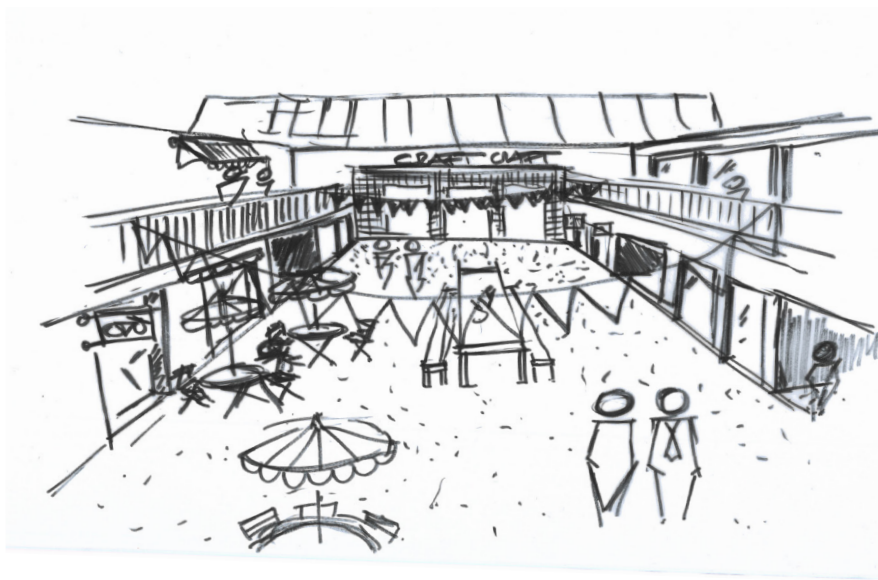


Void

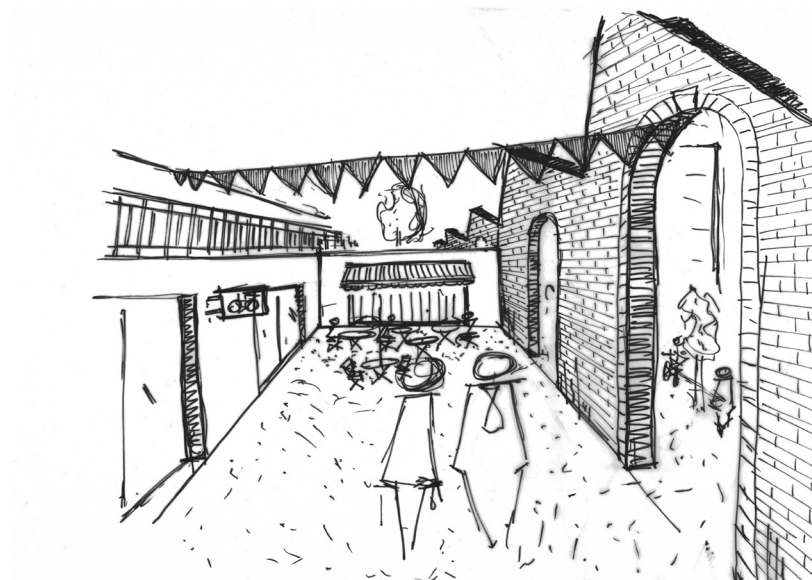
Blurred Private and Public spaces



Concept of the inverse mass and void



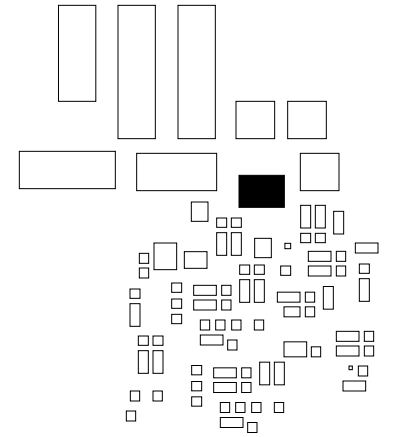
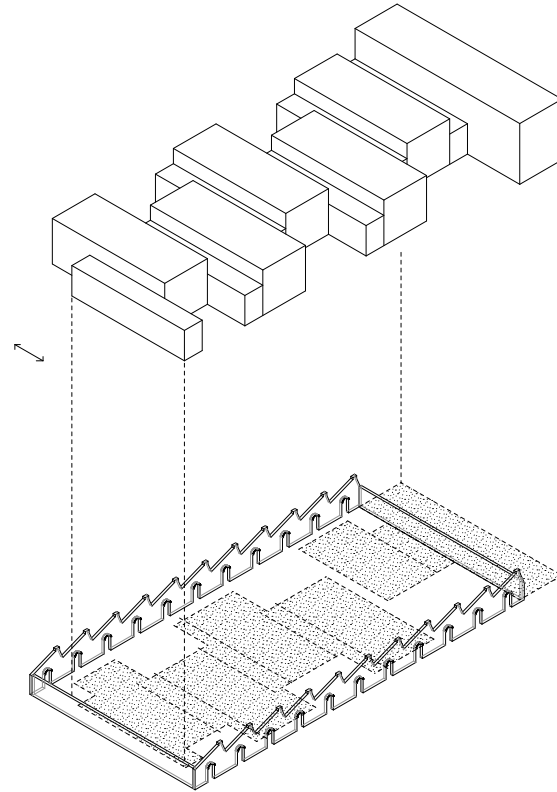
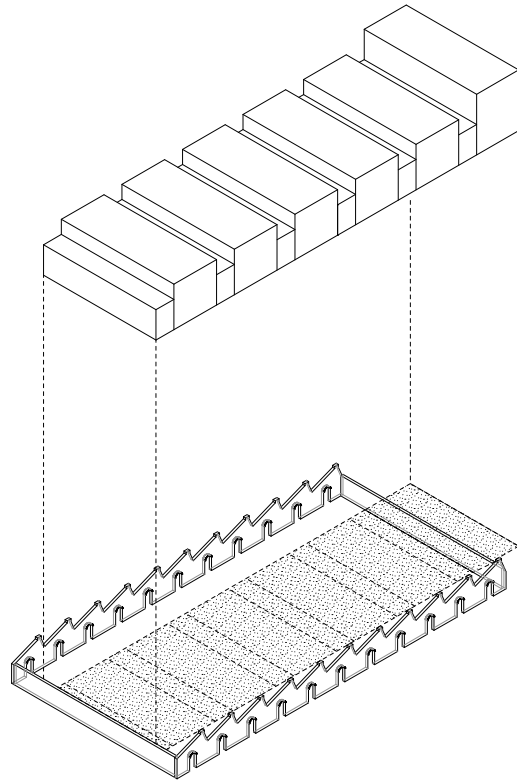
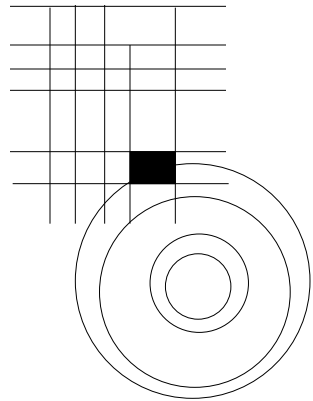
Fully private



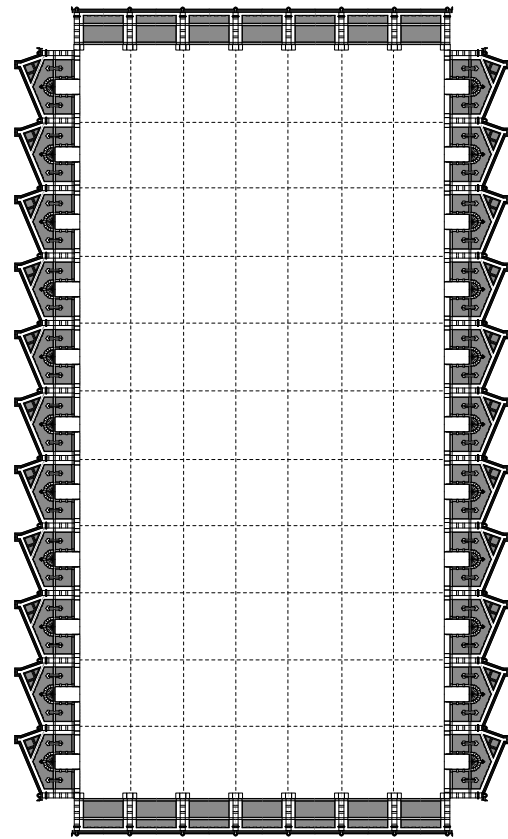
Semi-public with a permeable wall as threshold

Relation between Public and Private

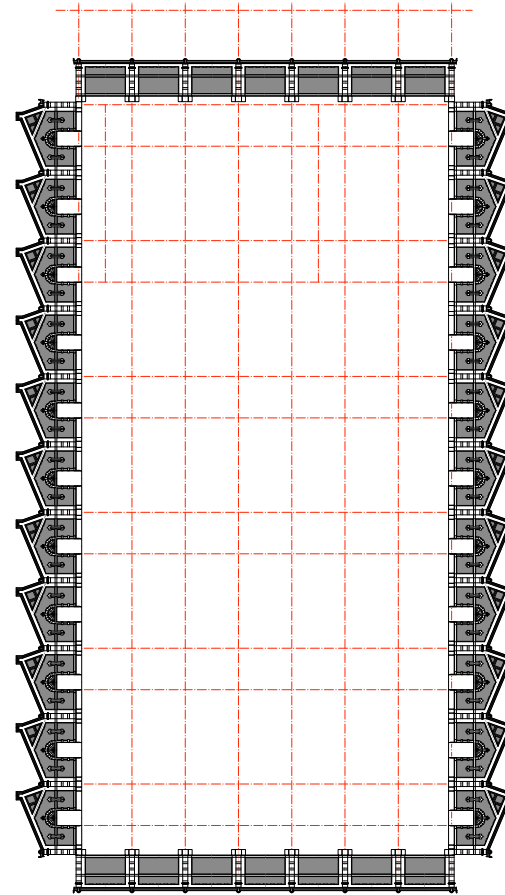




Volumetry

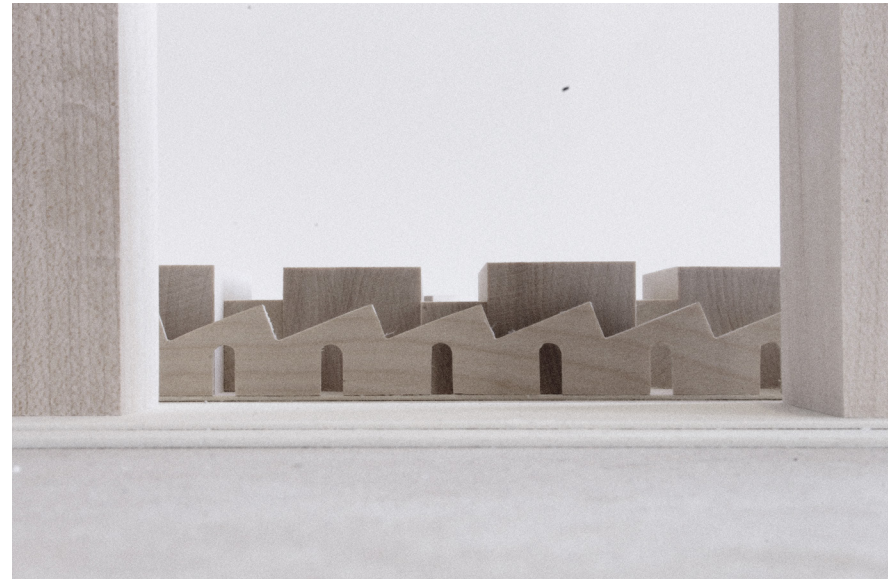
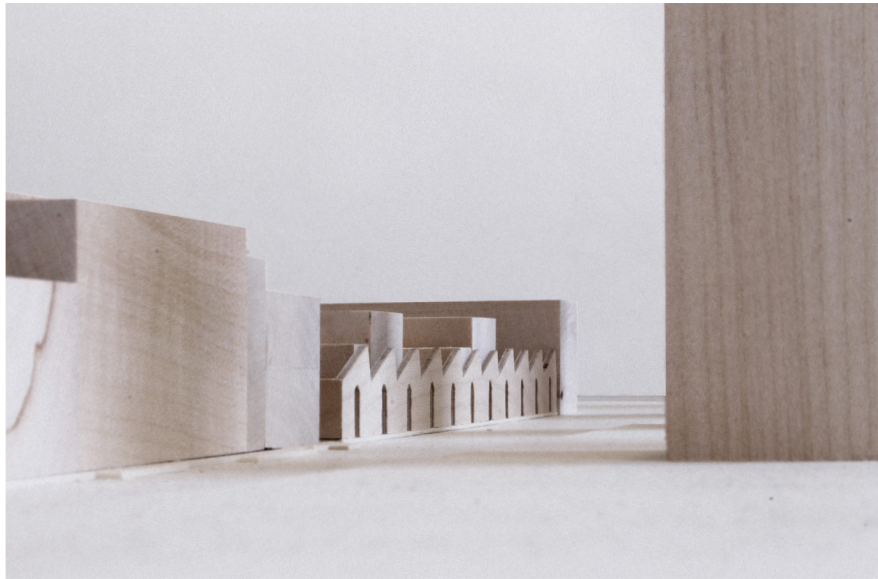


Existing

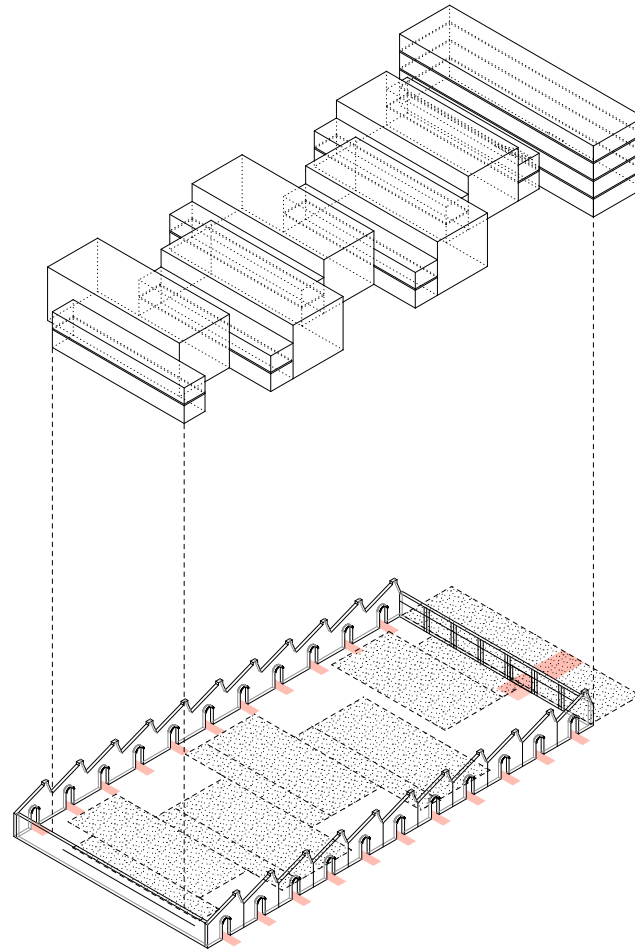


New

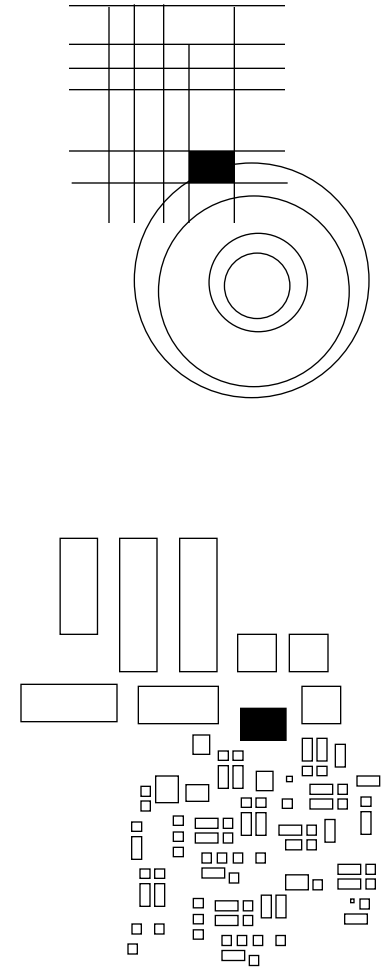
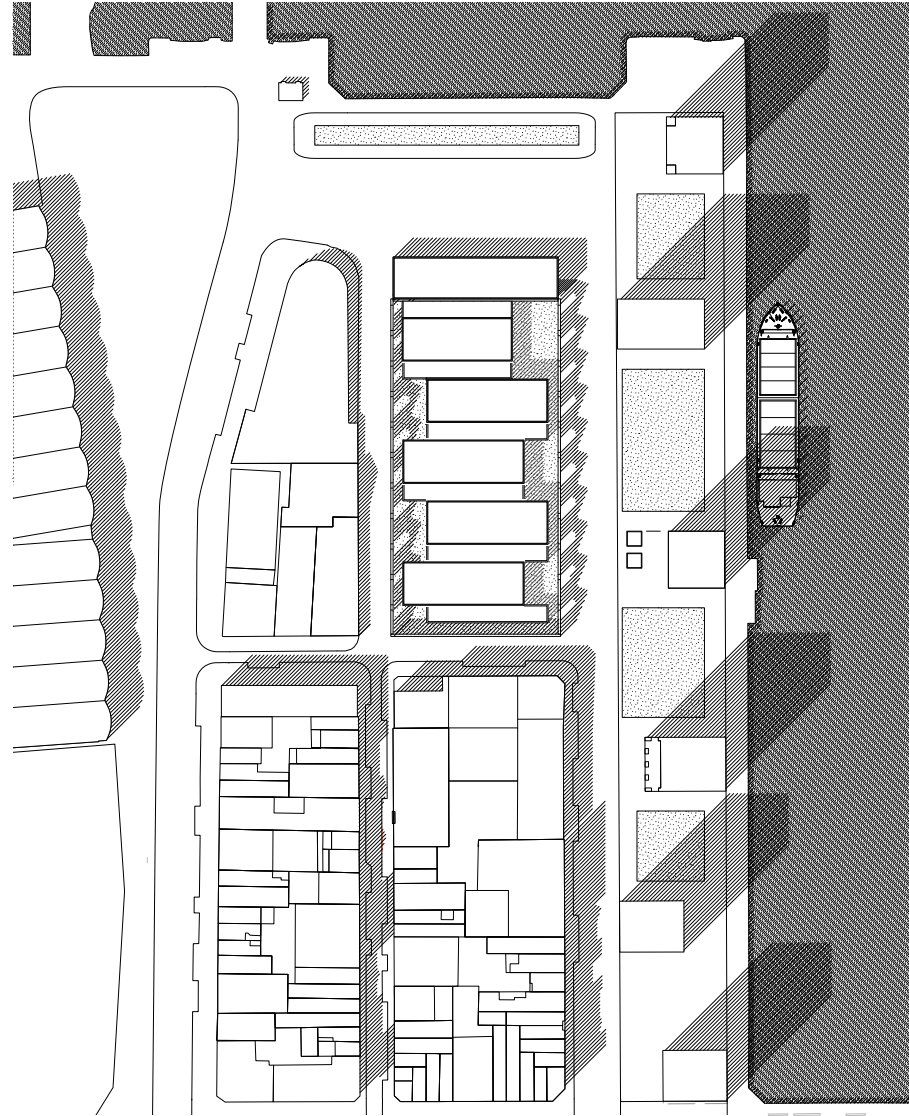
Grid structure



Relation between existing and new grid



Relation between the existing walls and new volumes



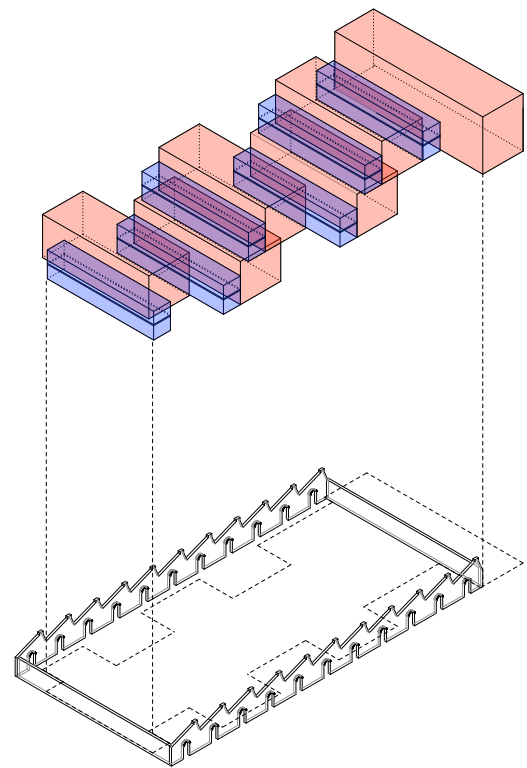
Context relations



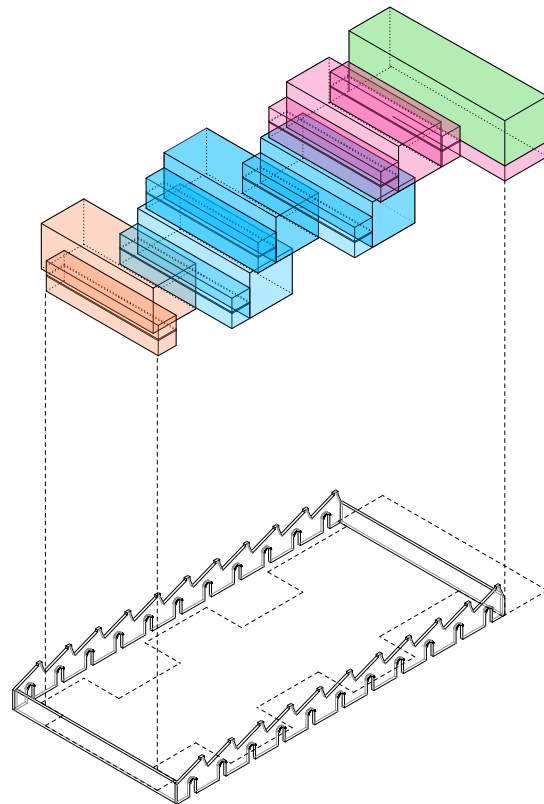
Workshops

**III | I**  
ORGANIZATION

- Main functions
- Service functions



- Educational main building
- Public
- Workshops
- Young Entrepreneurs



Organization





Metal workshop



Wood workshop



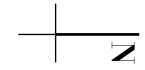
Masonry workshop

Case study, CPMB Colombier, CH



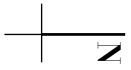
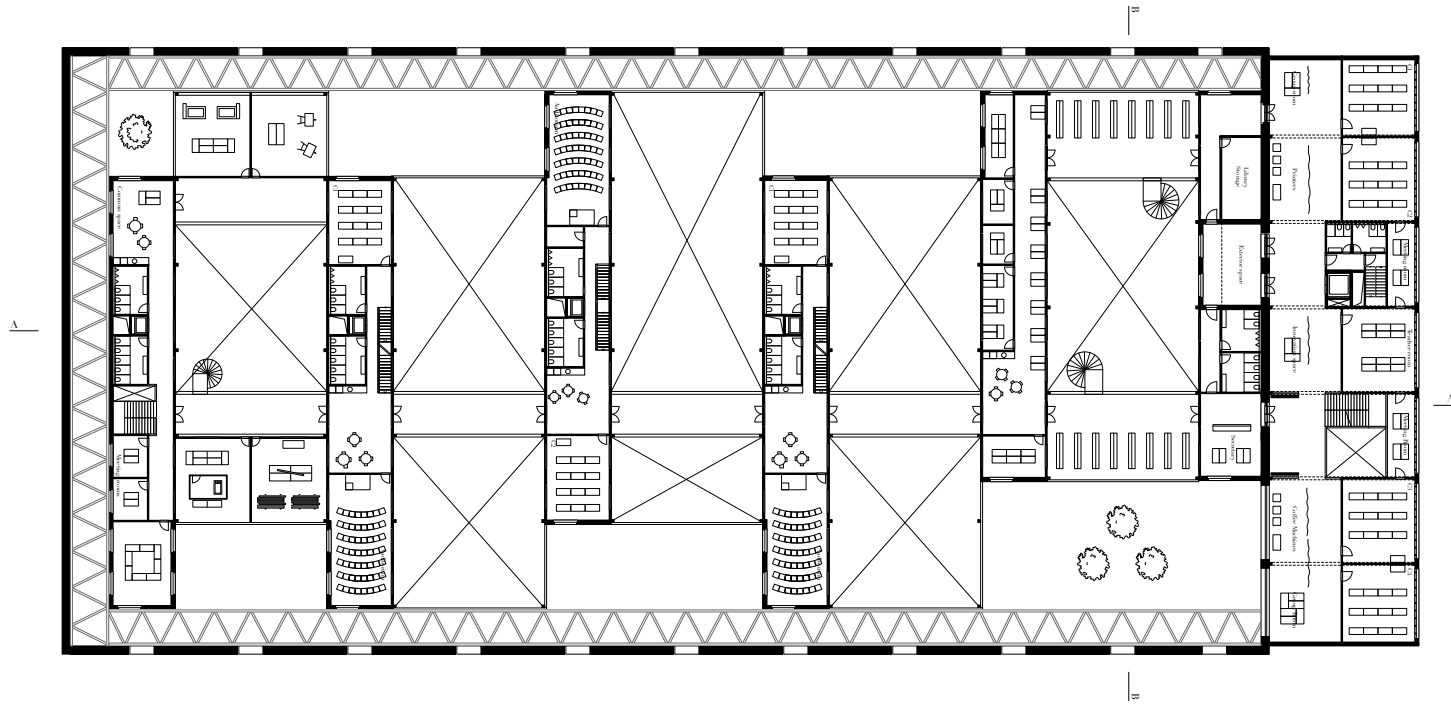
±00

Floor plans





Workshops

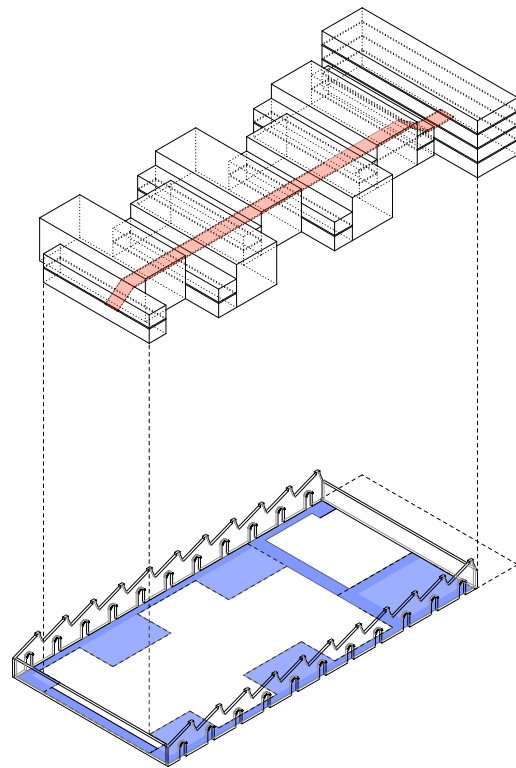


±01

Floor plans



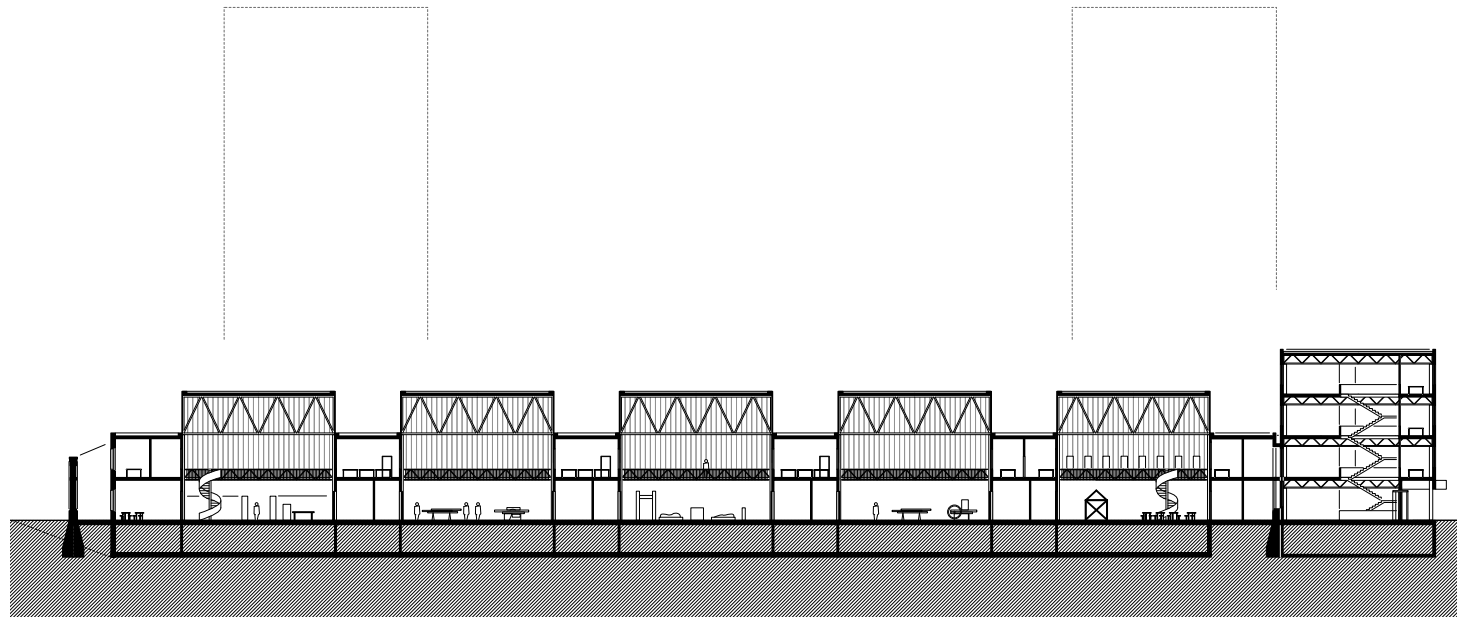
Workshops



Internal circulation

External circulation

Circulation

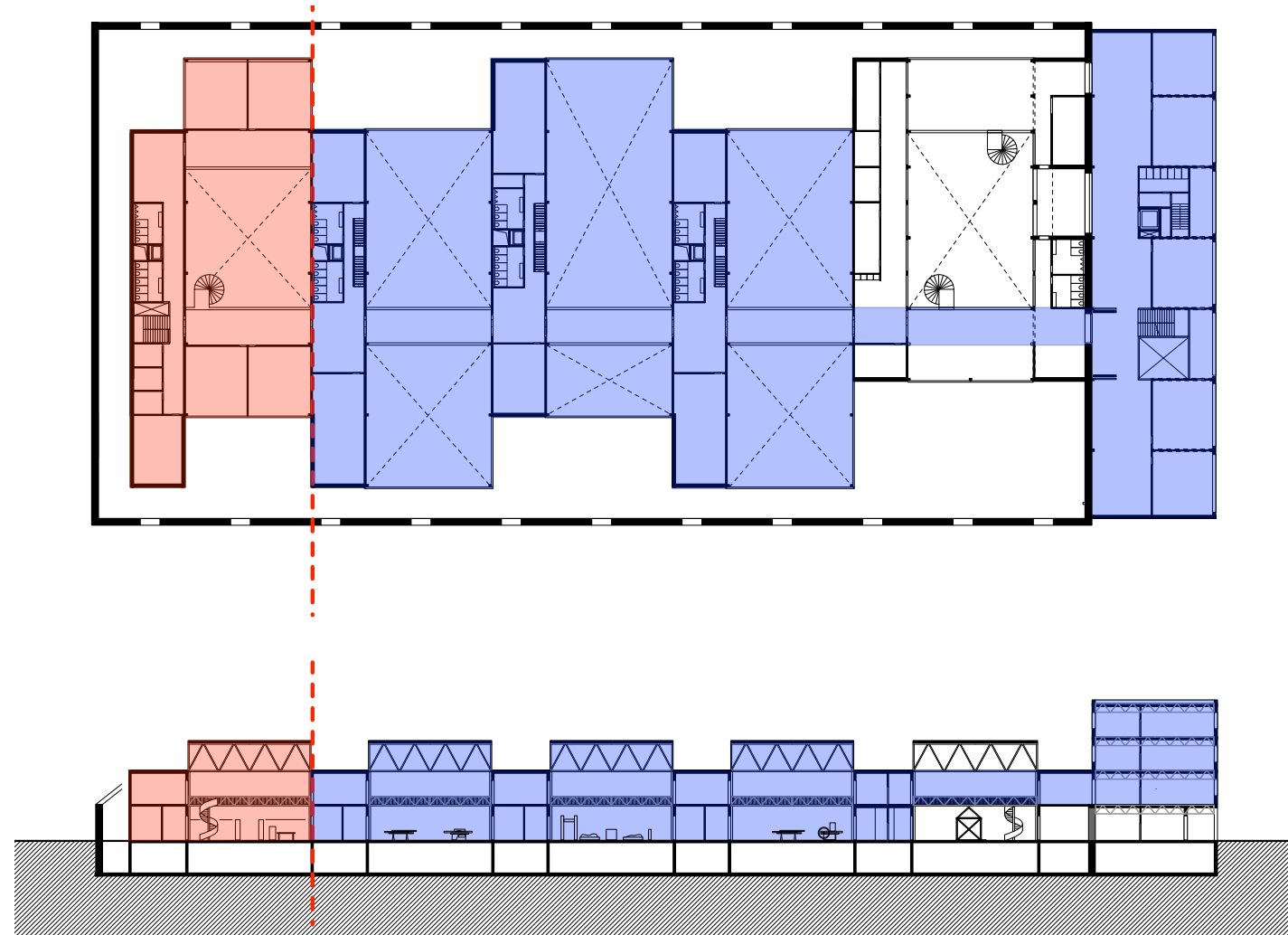


Section



Passerelle, moment of interaction

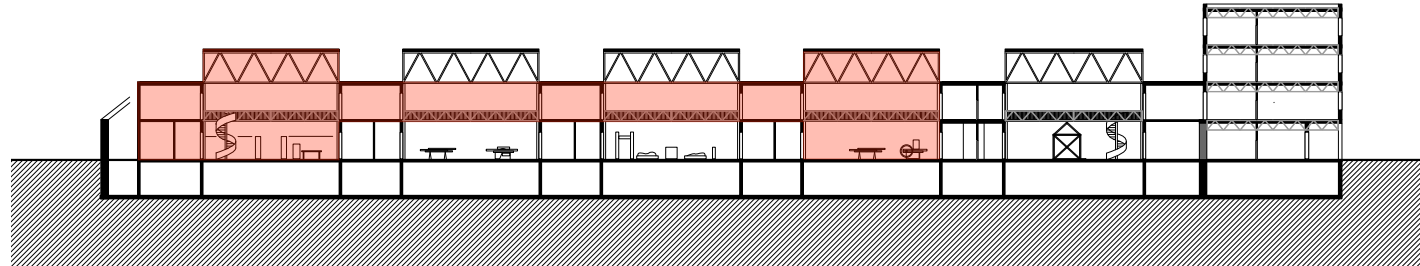
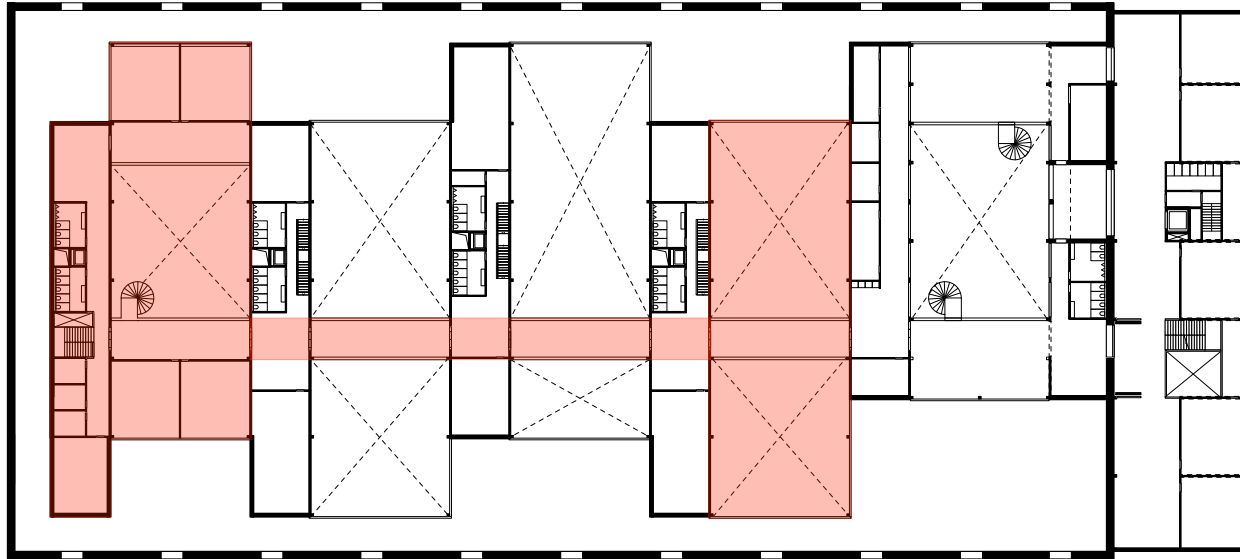




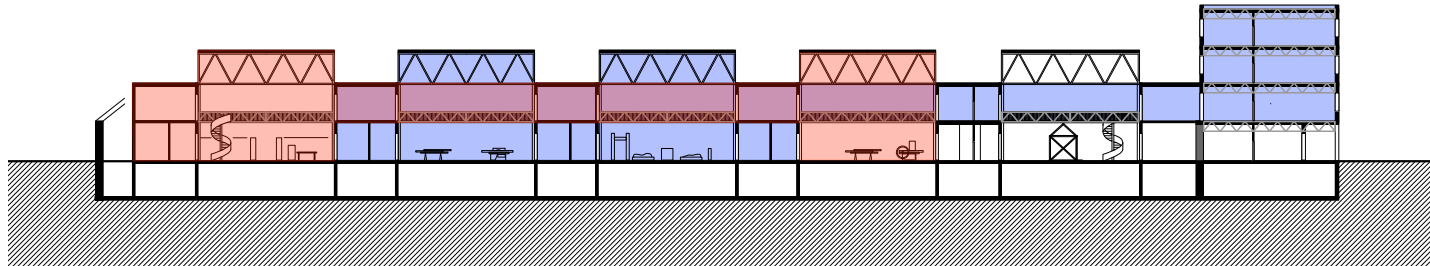
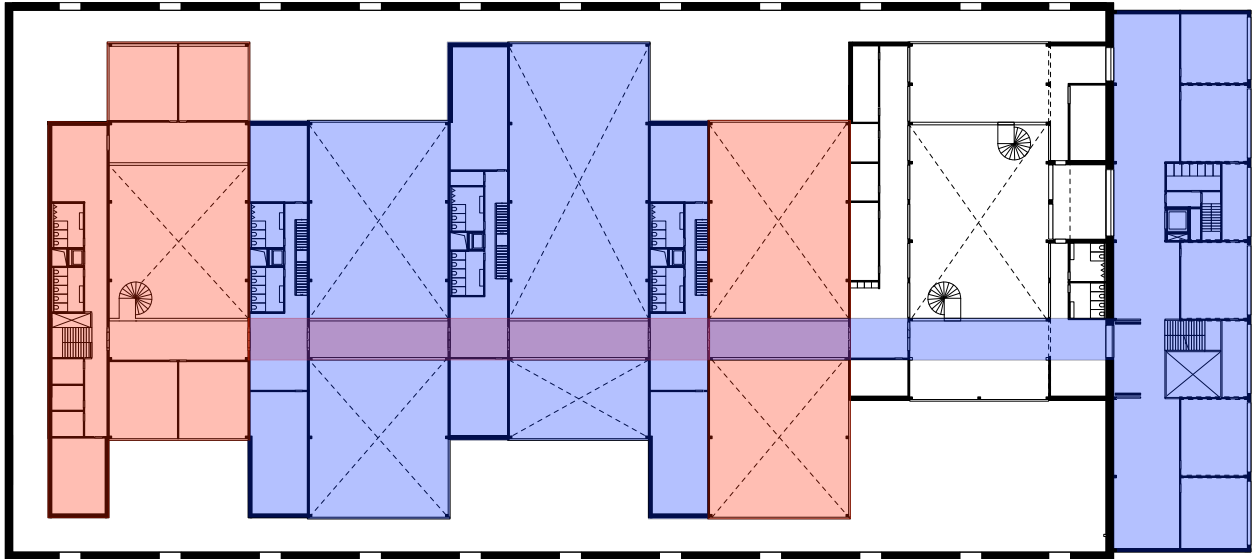
Young entrepreneurs

Craft school

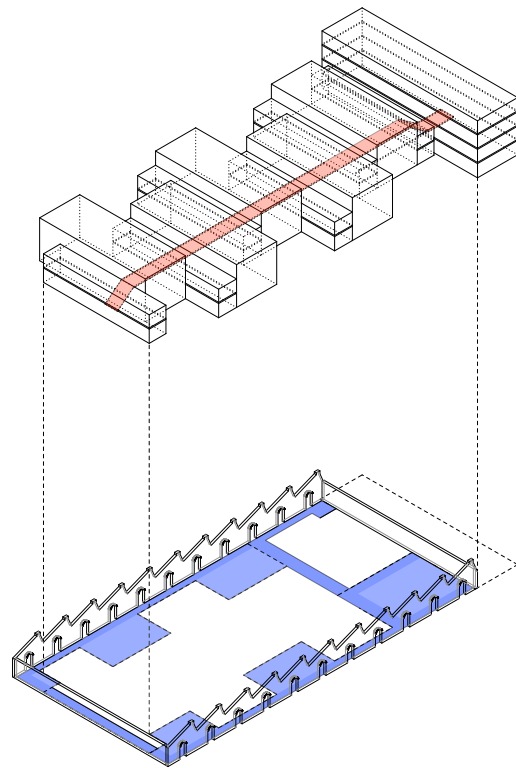
Users repartition



Young entrepreneurs activities



Users repartition



- Internal circulation
- External circulation

Circulation



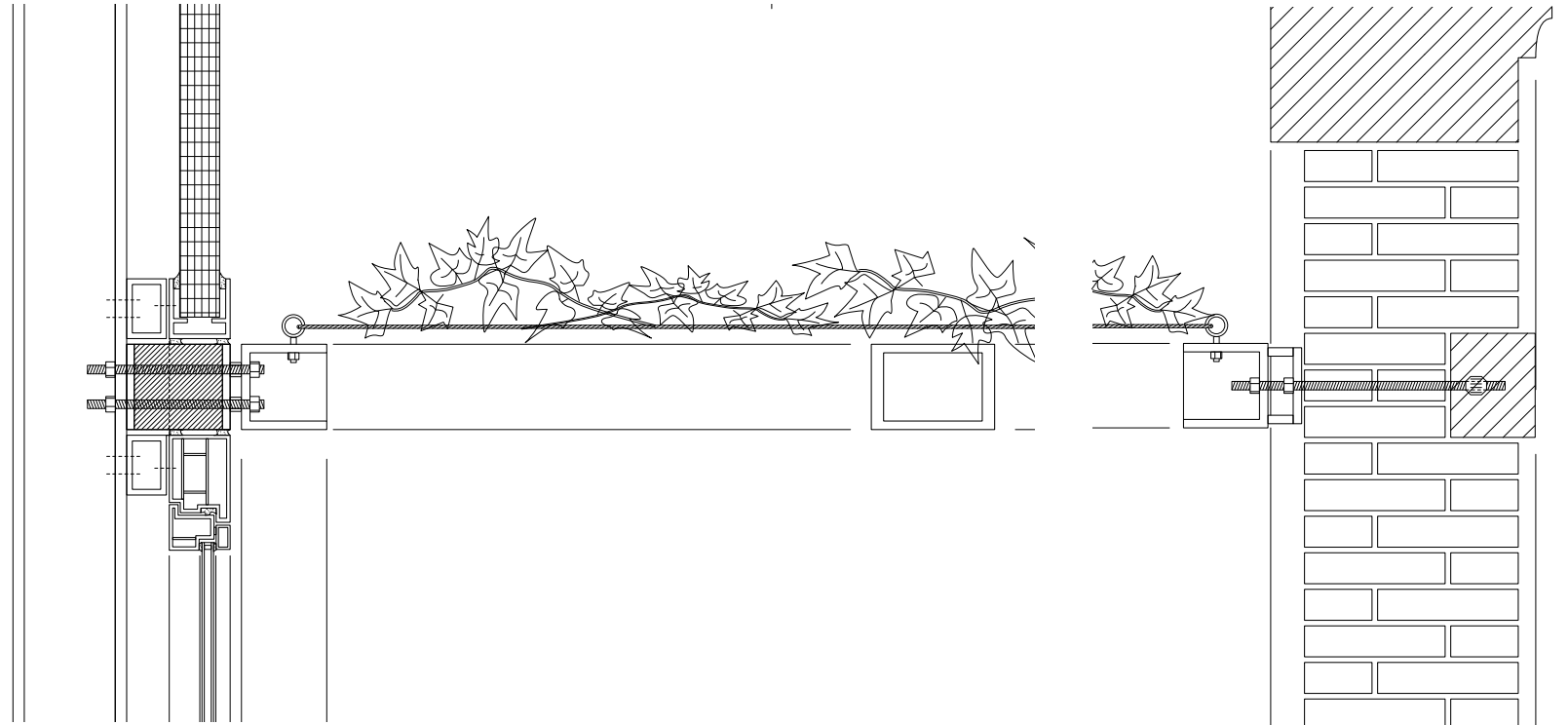
±00

Floor plans

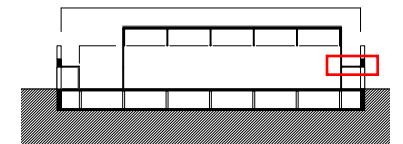


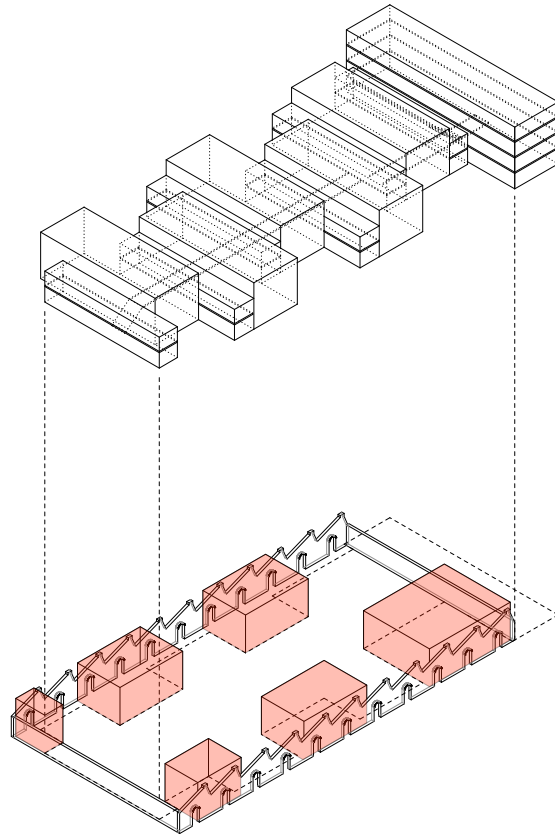


Arcade as threshold and structure for the historical wall



Truss fixation





City Rooms

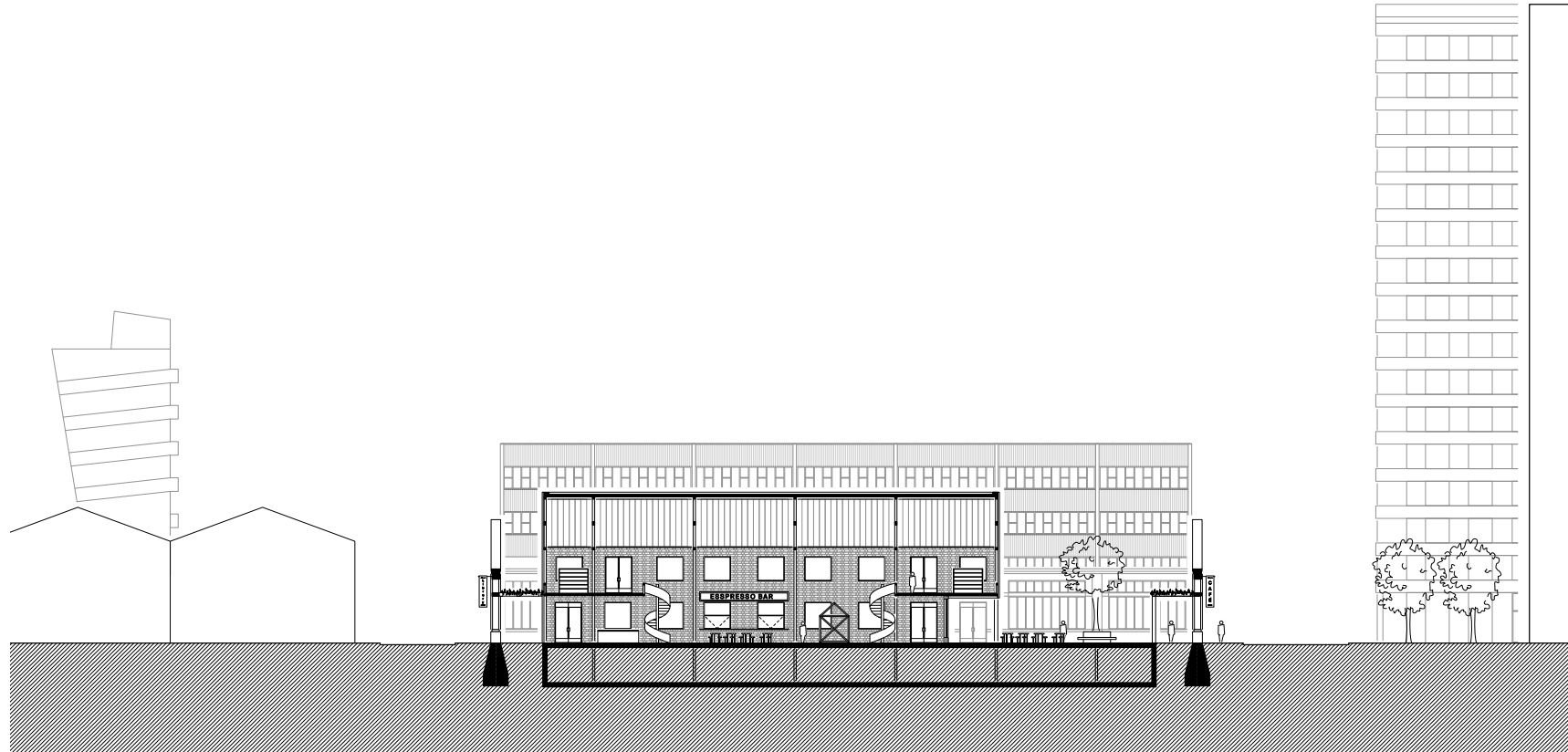




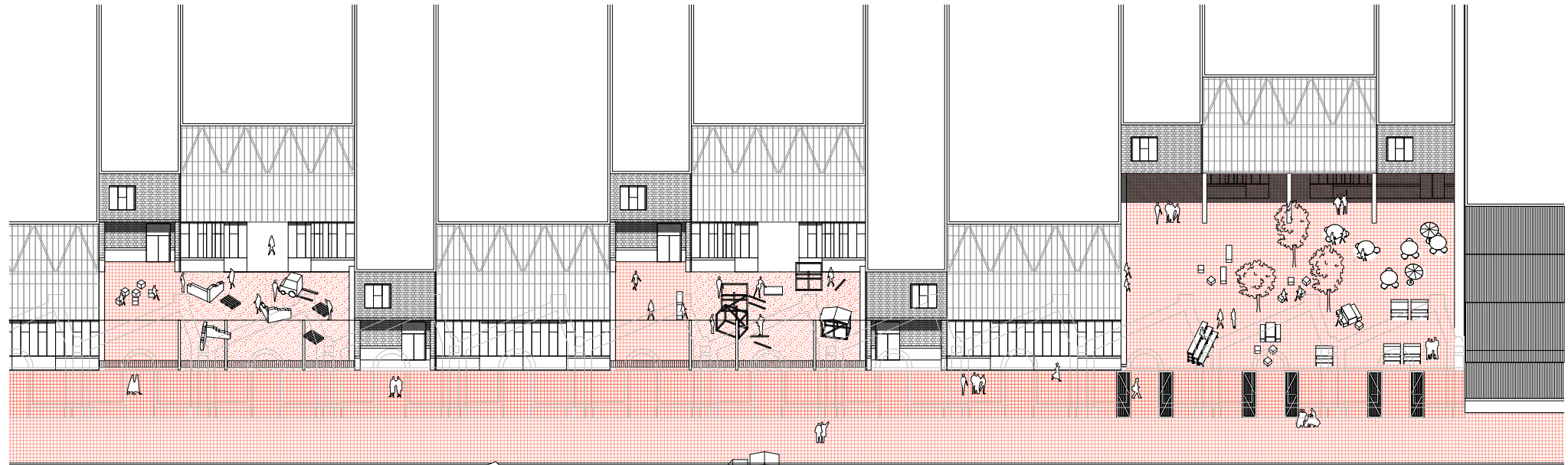
±00

Floor plans





City Room



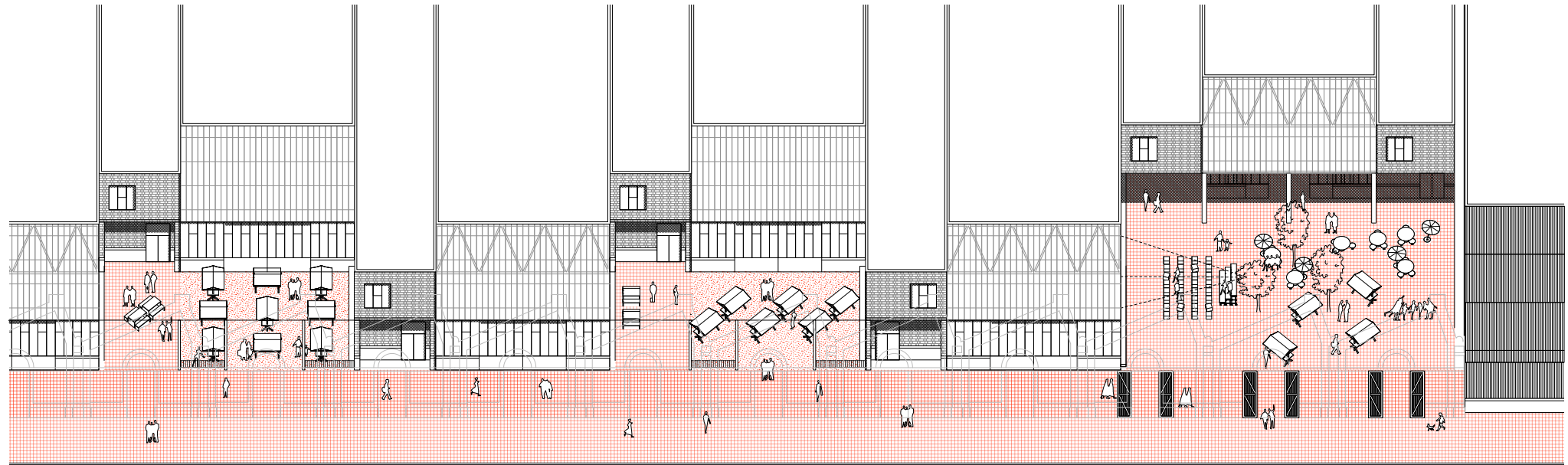
Massonry workshop

Wood workshop

Main square

During week days

Exterior spaces activities



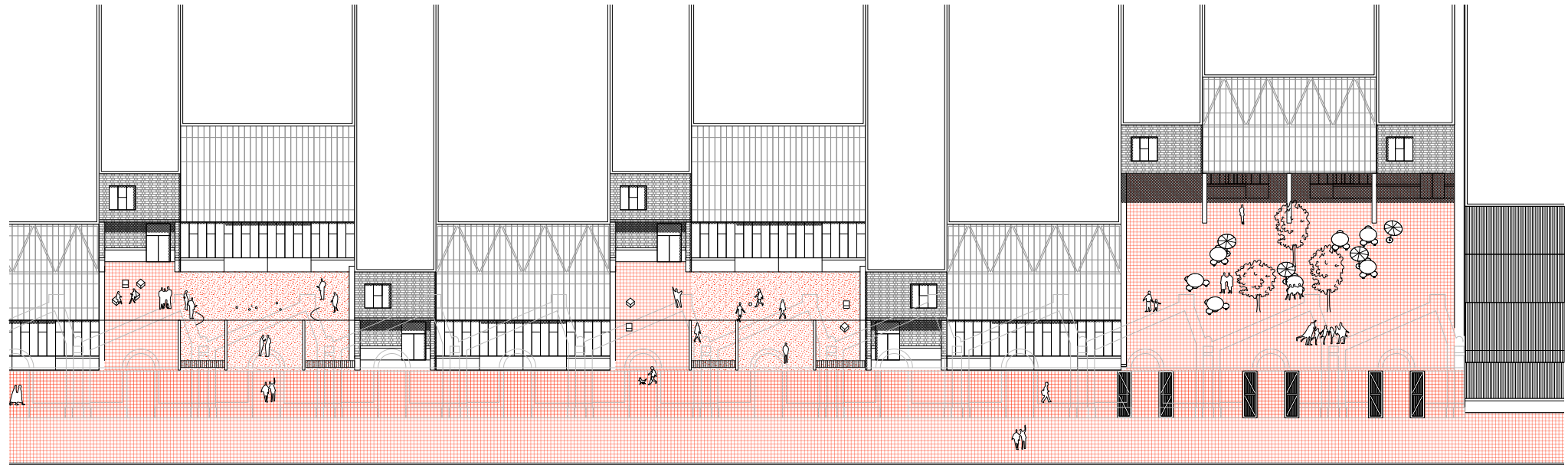
Massonry workshop

Wood workshop

Main square

On a saturday

City rooms activities



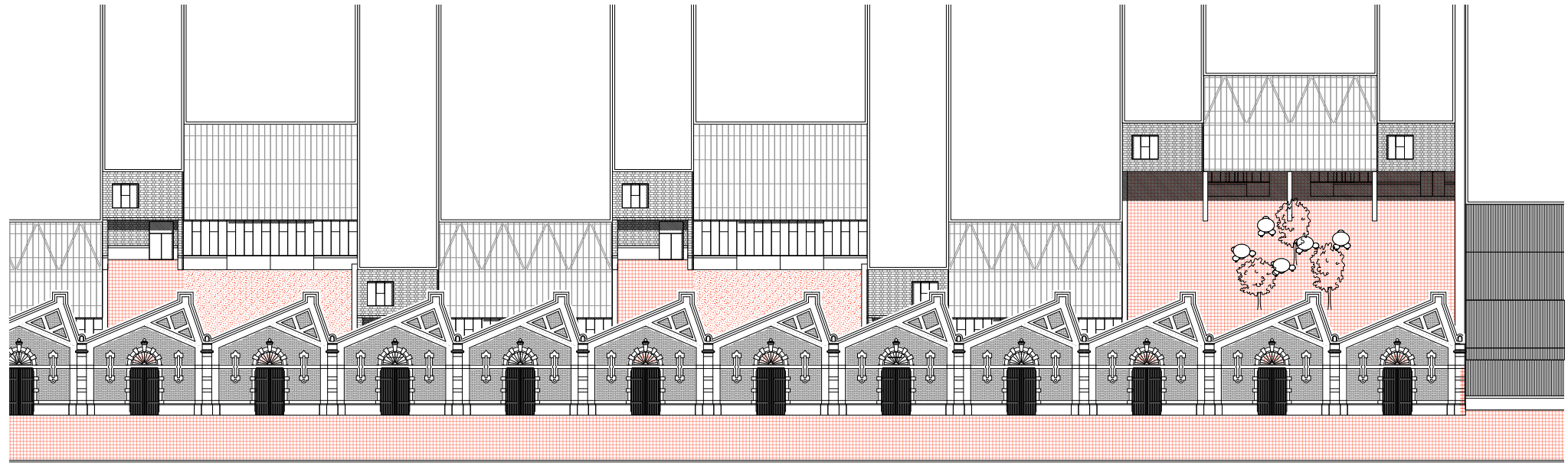
Massonry workshop

Wood workshop

Main square

On a sunday

Exterior spaces activities



Massonry workshop

Wood workshop

Main square

At night

Exterior spaces activities



Exterior spaces

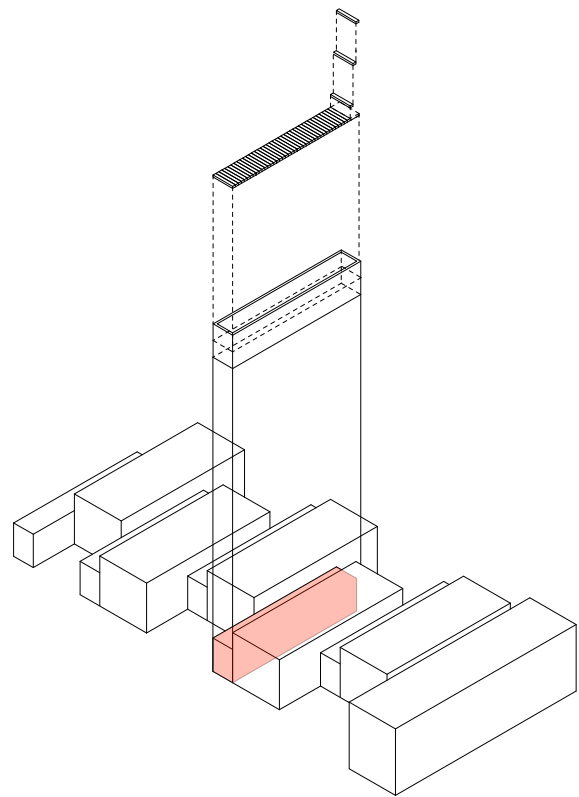


Exterior spaces

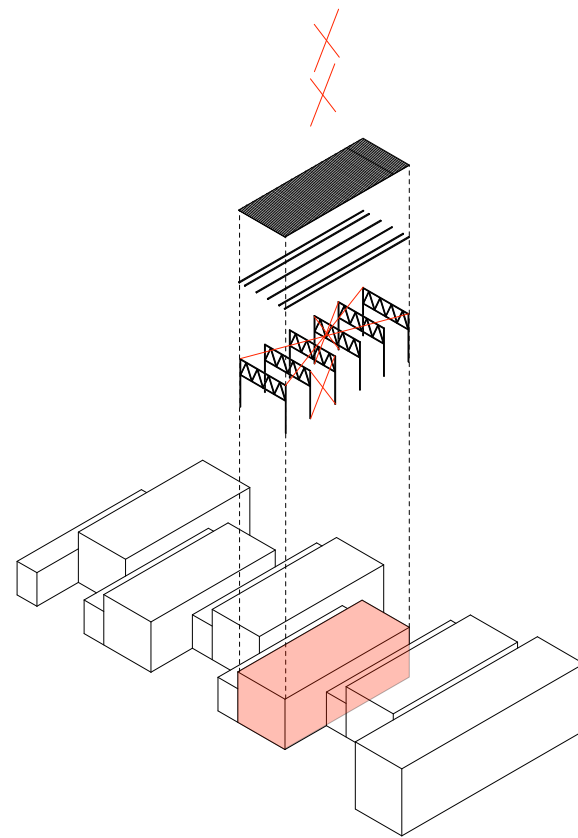


**III | II**

ARCHITECTURAL LANGUAGE

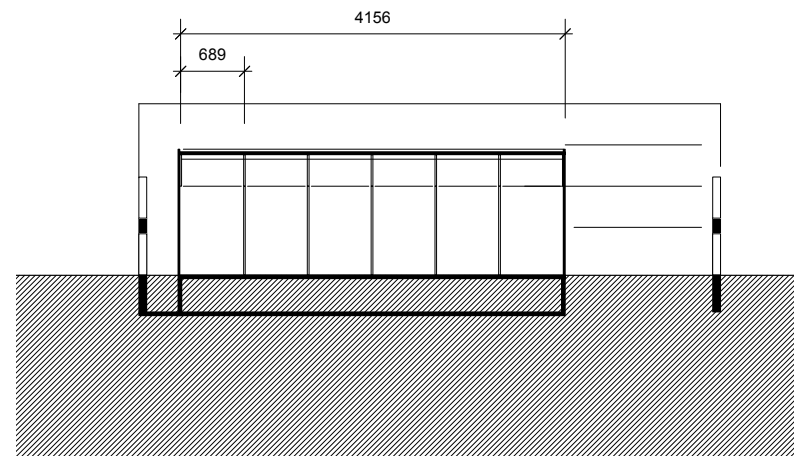
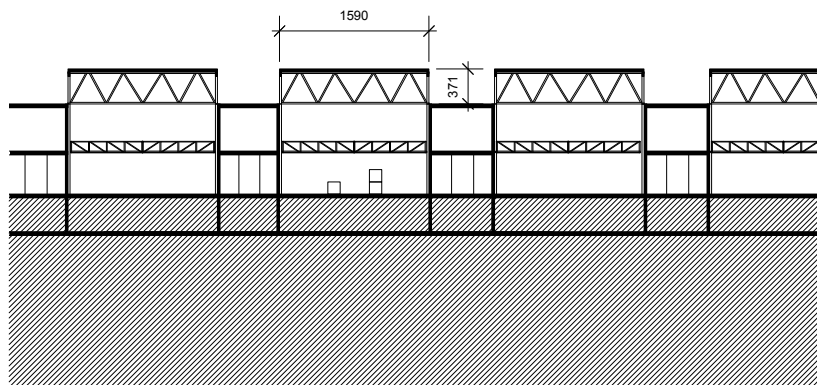


Brick structure

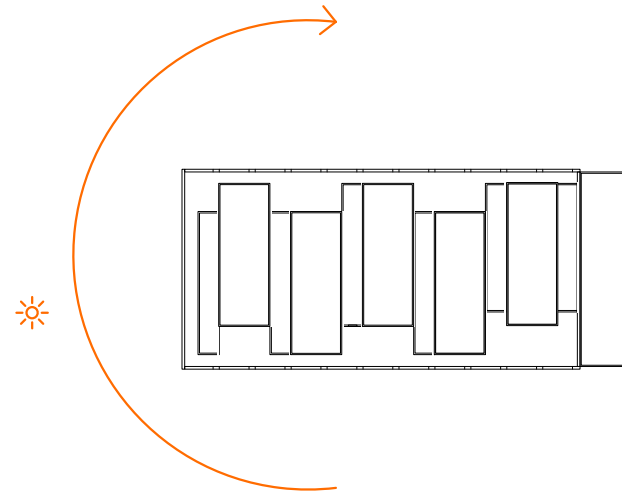
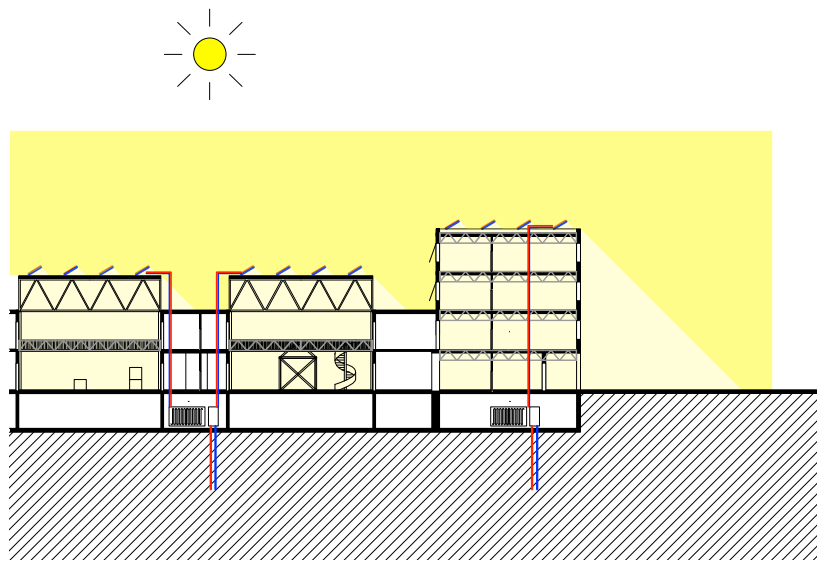


Steel structure

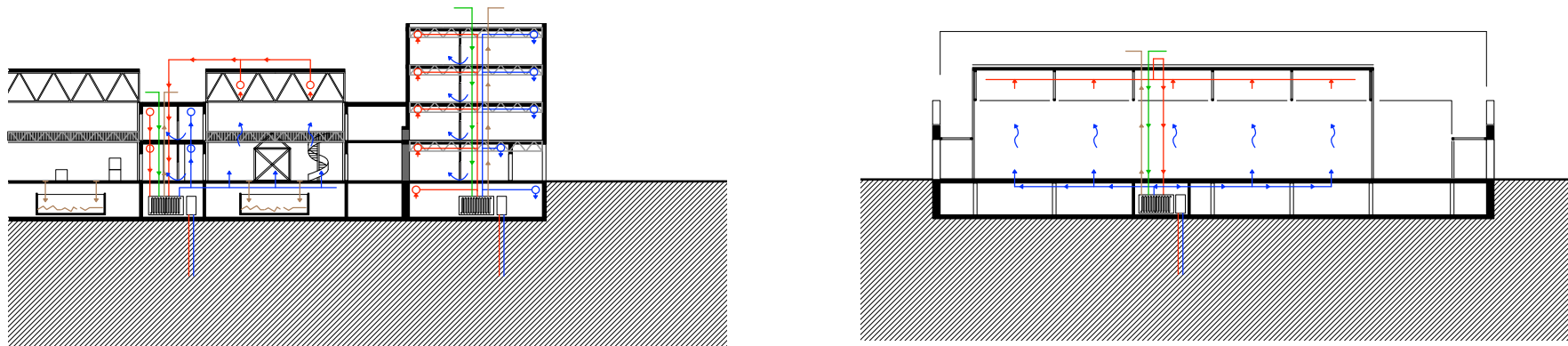
Structure



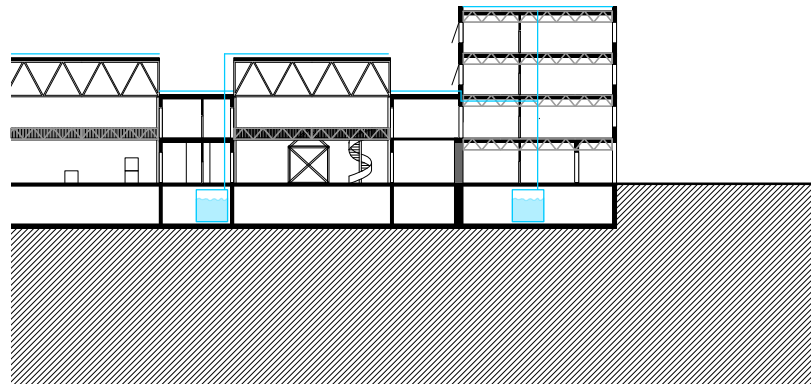
Structure



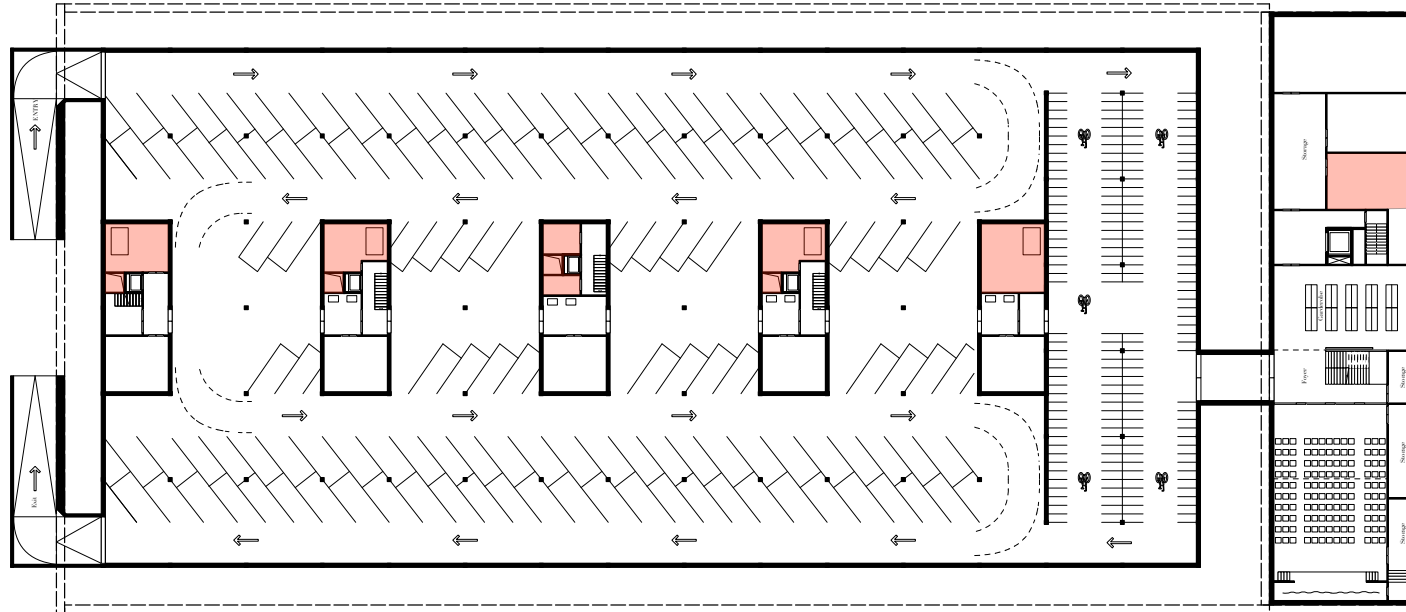
Daylight diagram



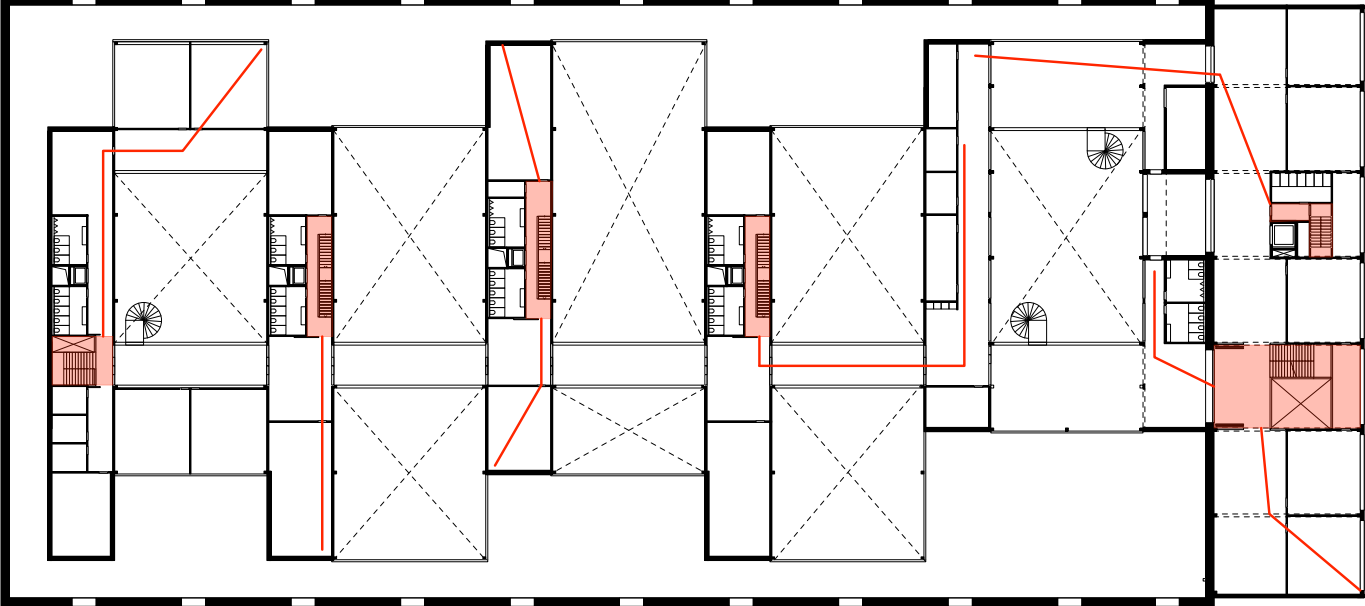
Ventilation diagram



Rain water

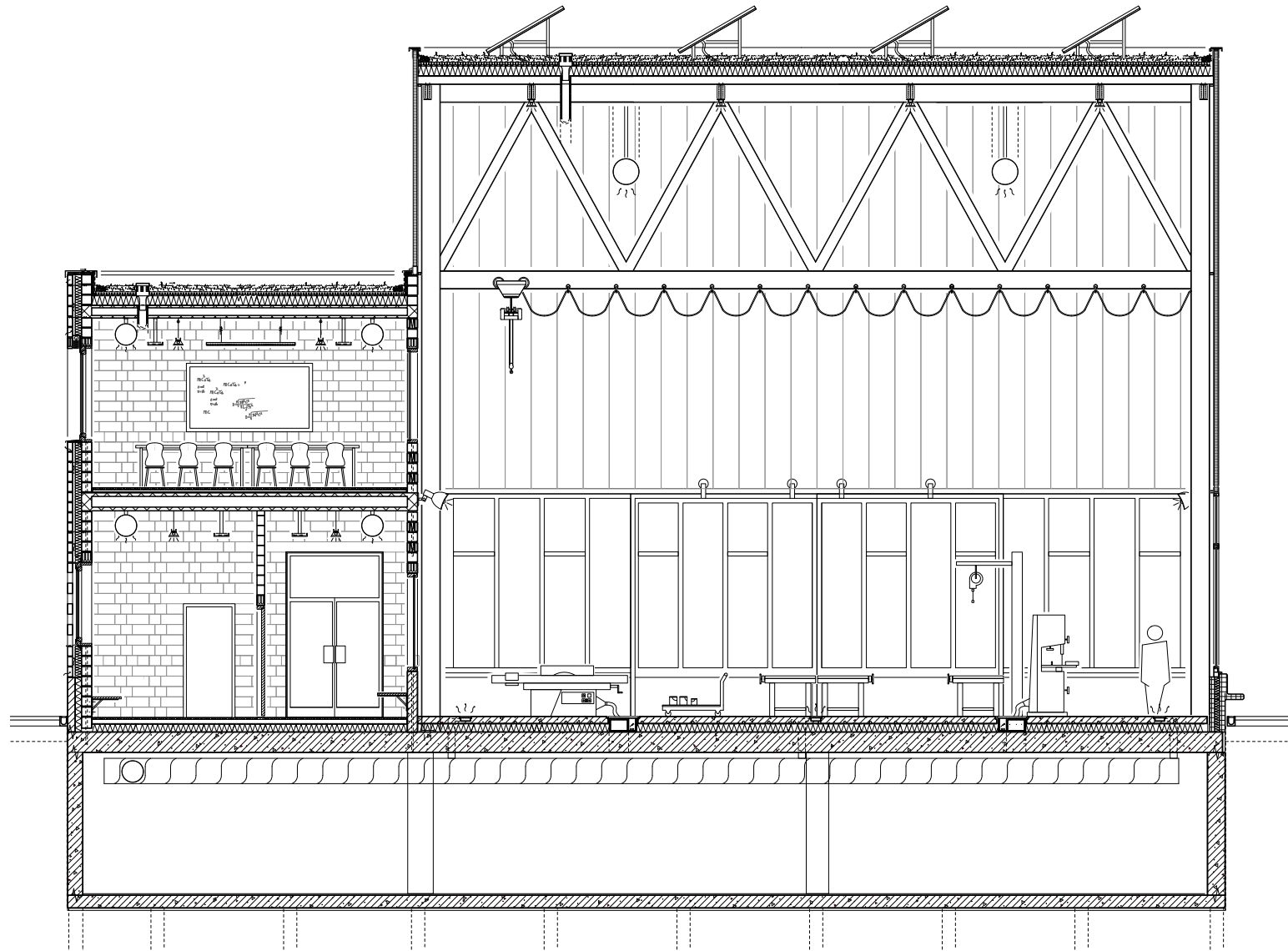


Technical rooms

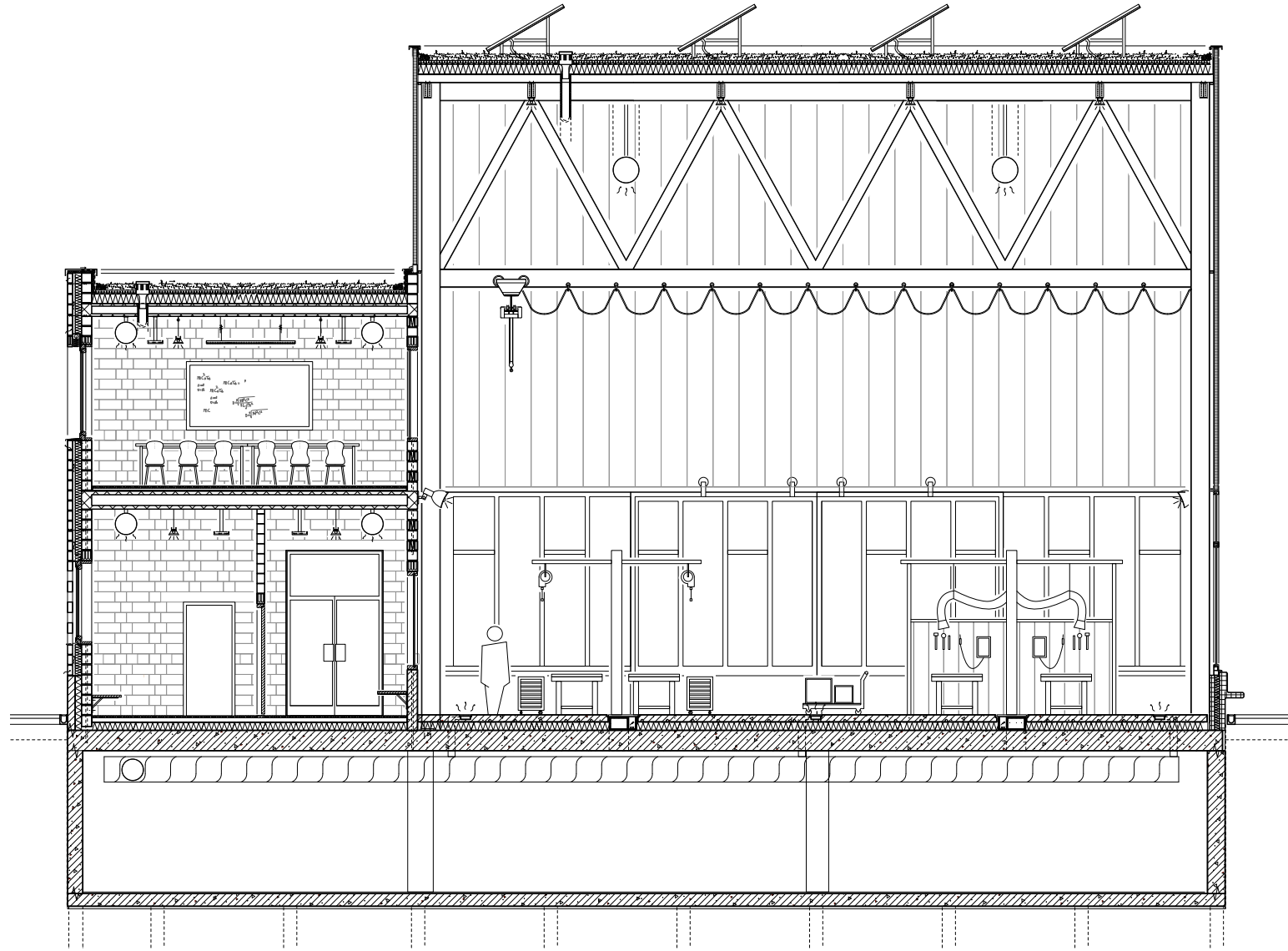


Fire escapes

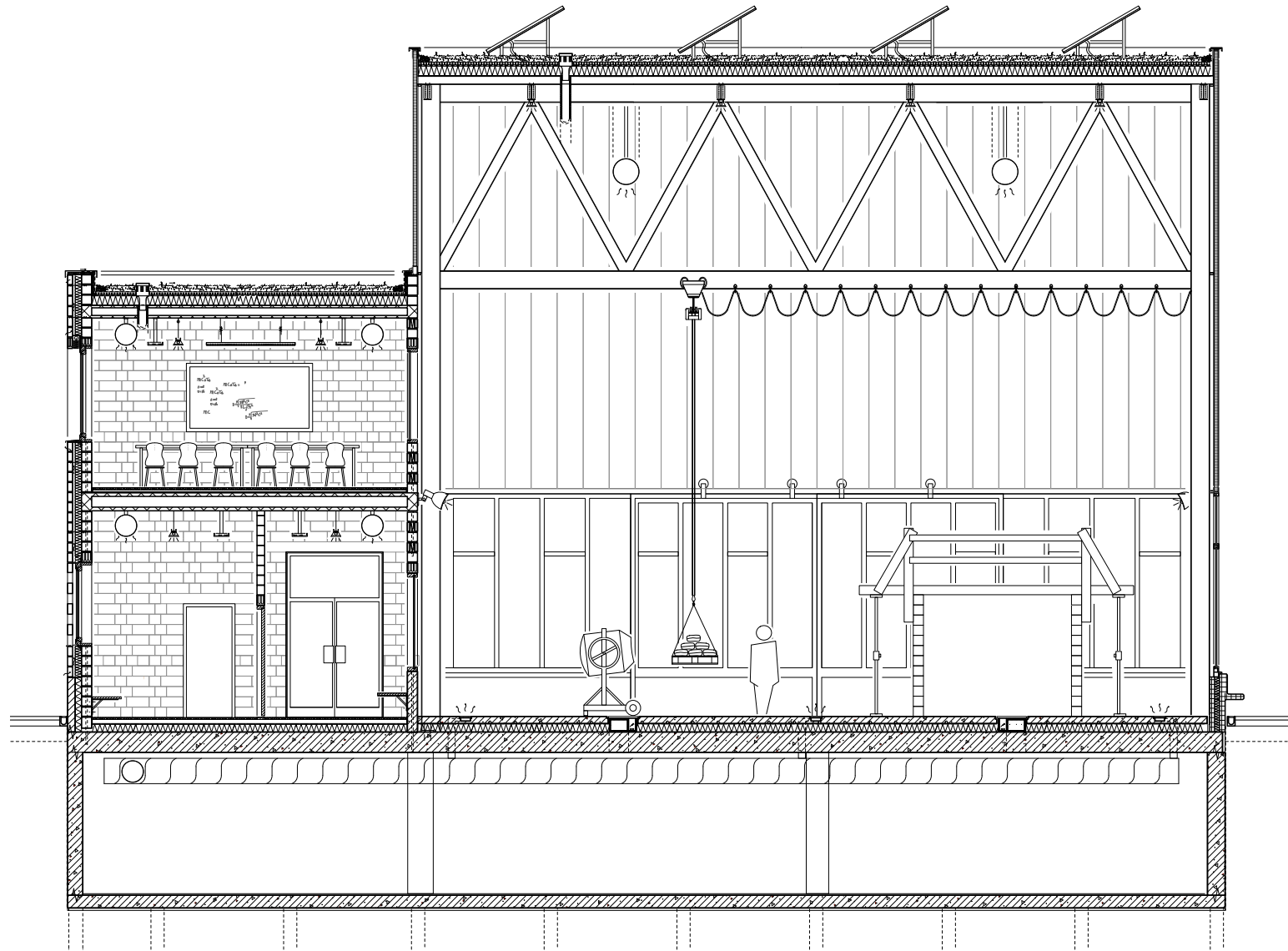




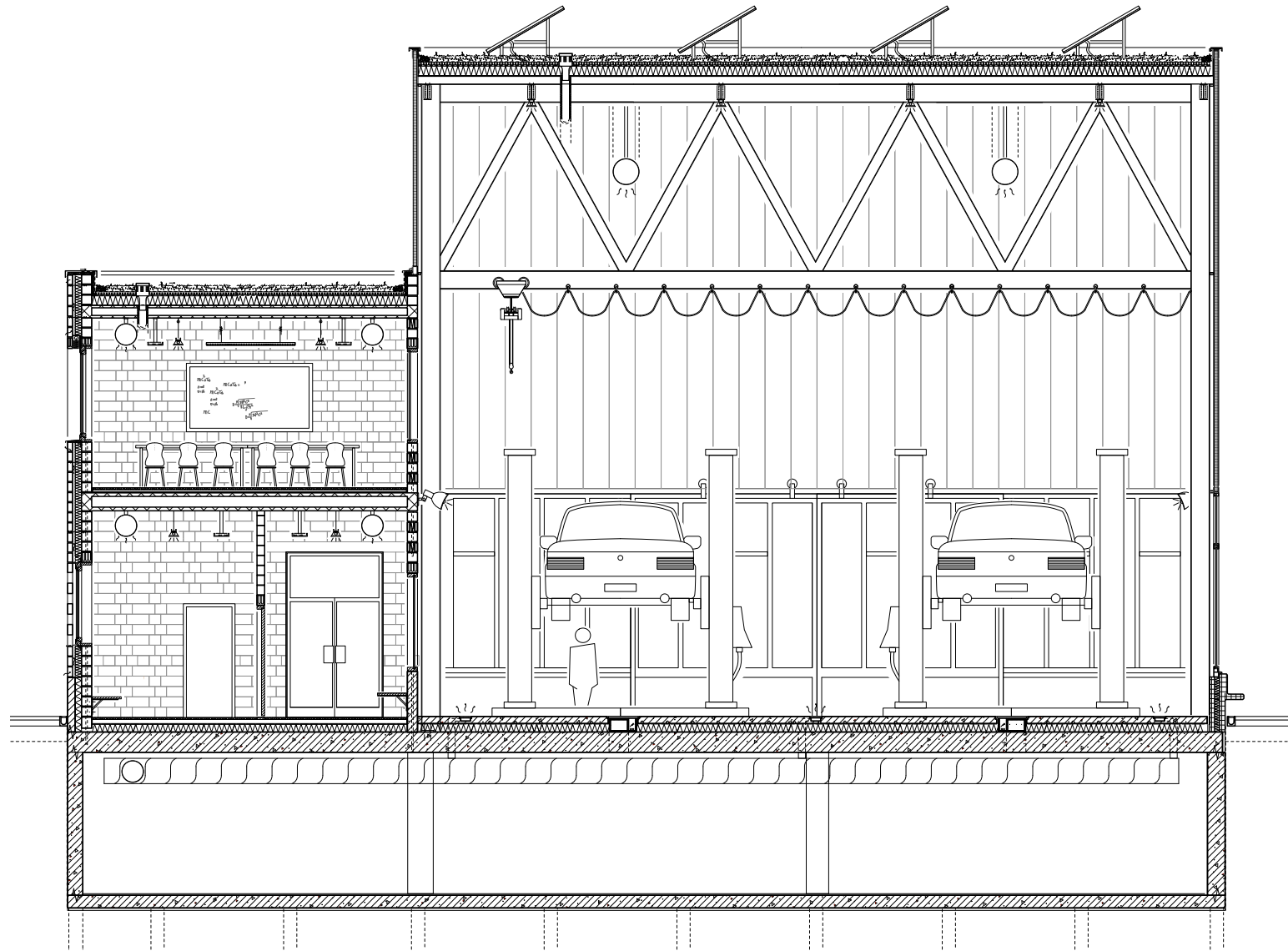
Structure, technique and flexibility



Structure, technique and flexibility



Structure, technique and flexibility



Structure, technique and flexibility



Workshops offer flexibility



Production Process



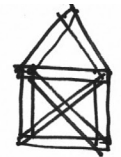
Raw material entry



Storage



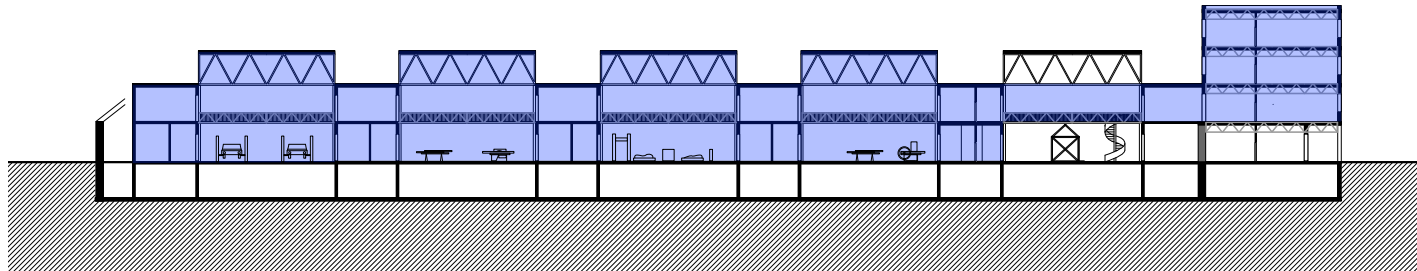
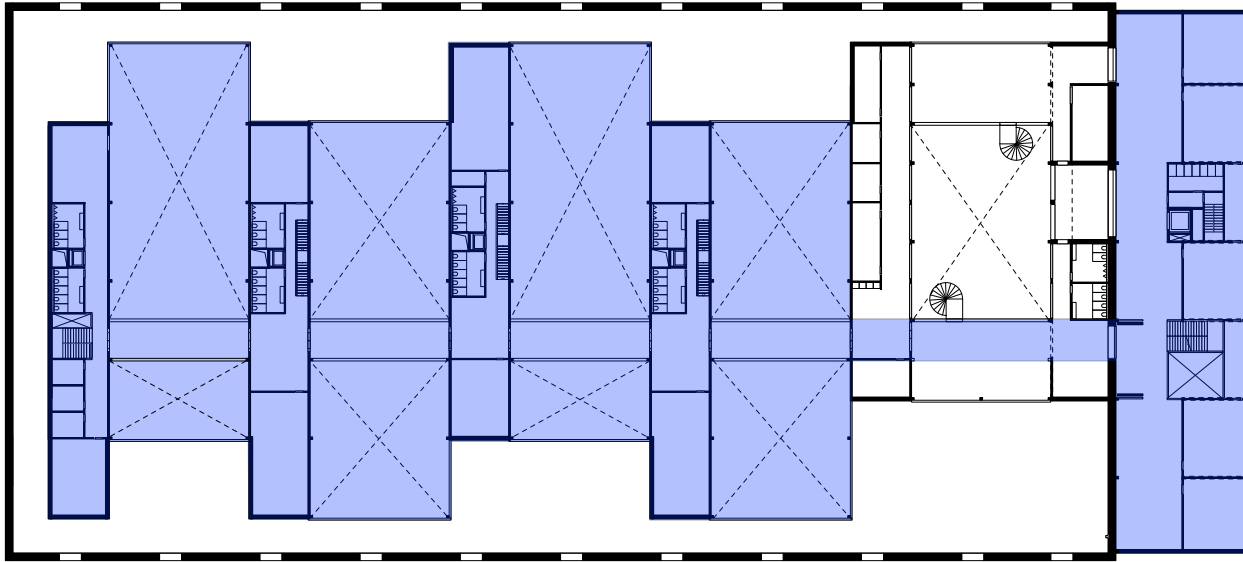
Processing



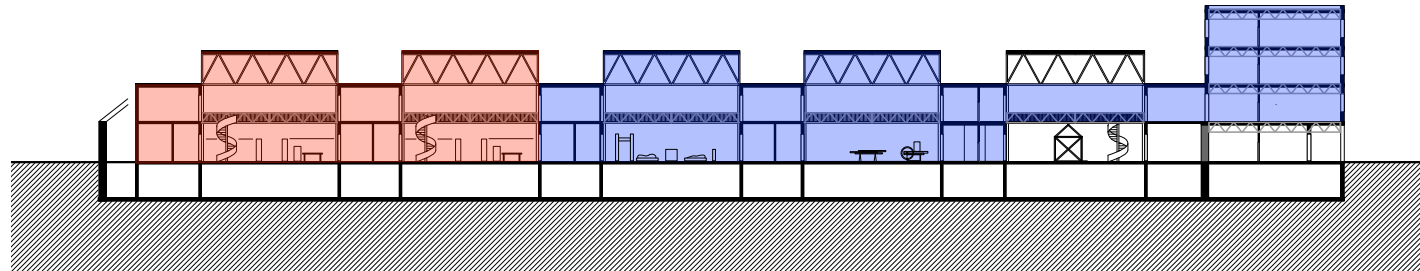
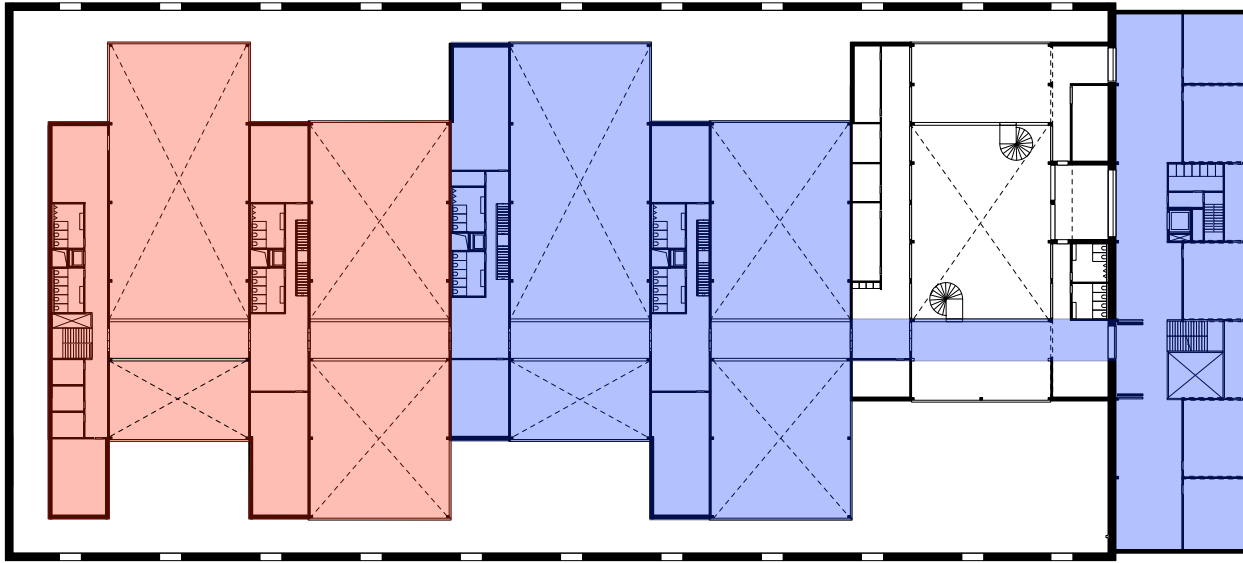
Assembling



Final work exit

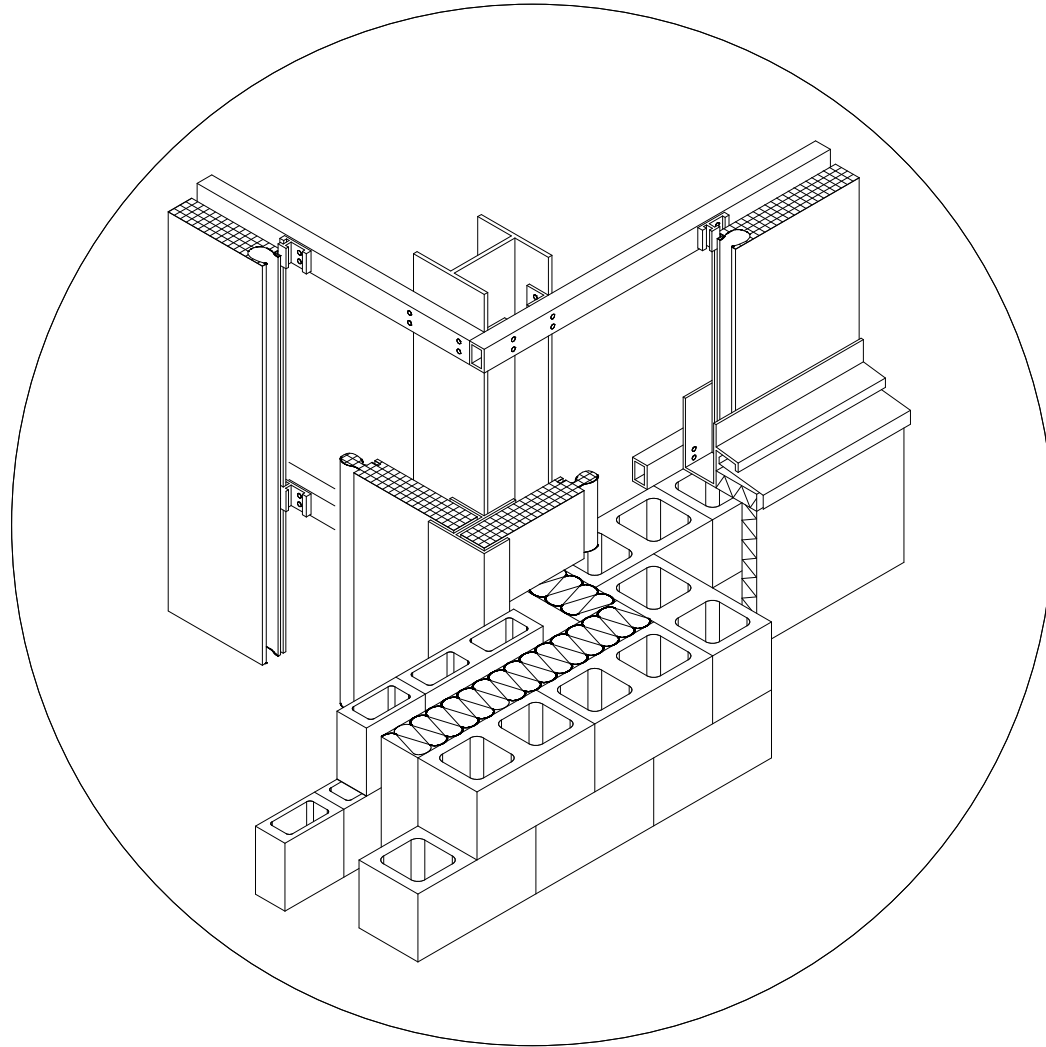


Structure and technique expressed

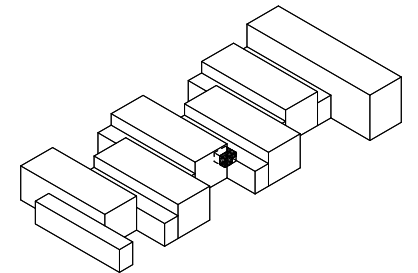


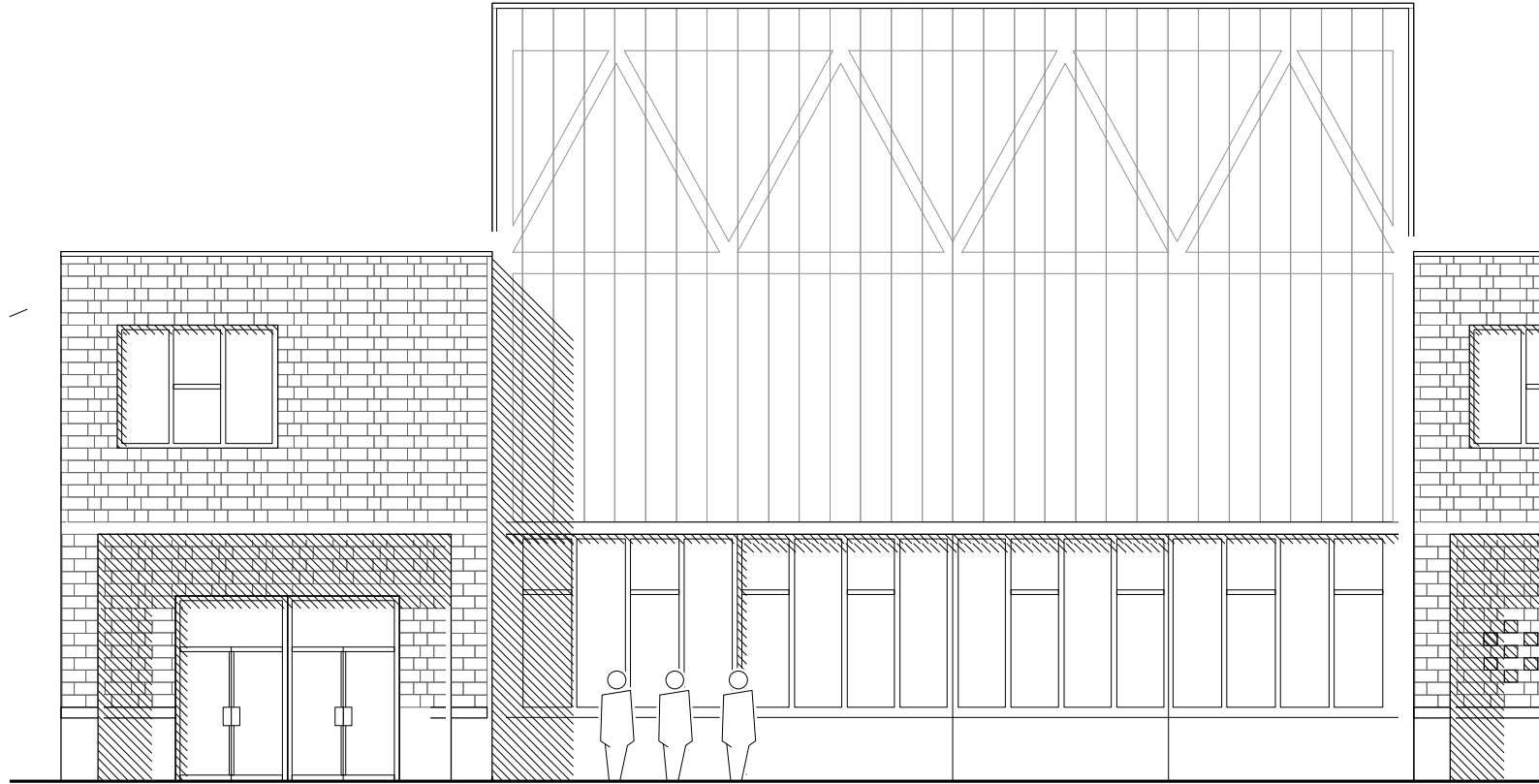
Structure and technique expressed





Key moment





Alignment between the workshop and service spaces



Service rooms

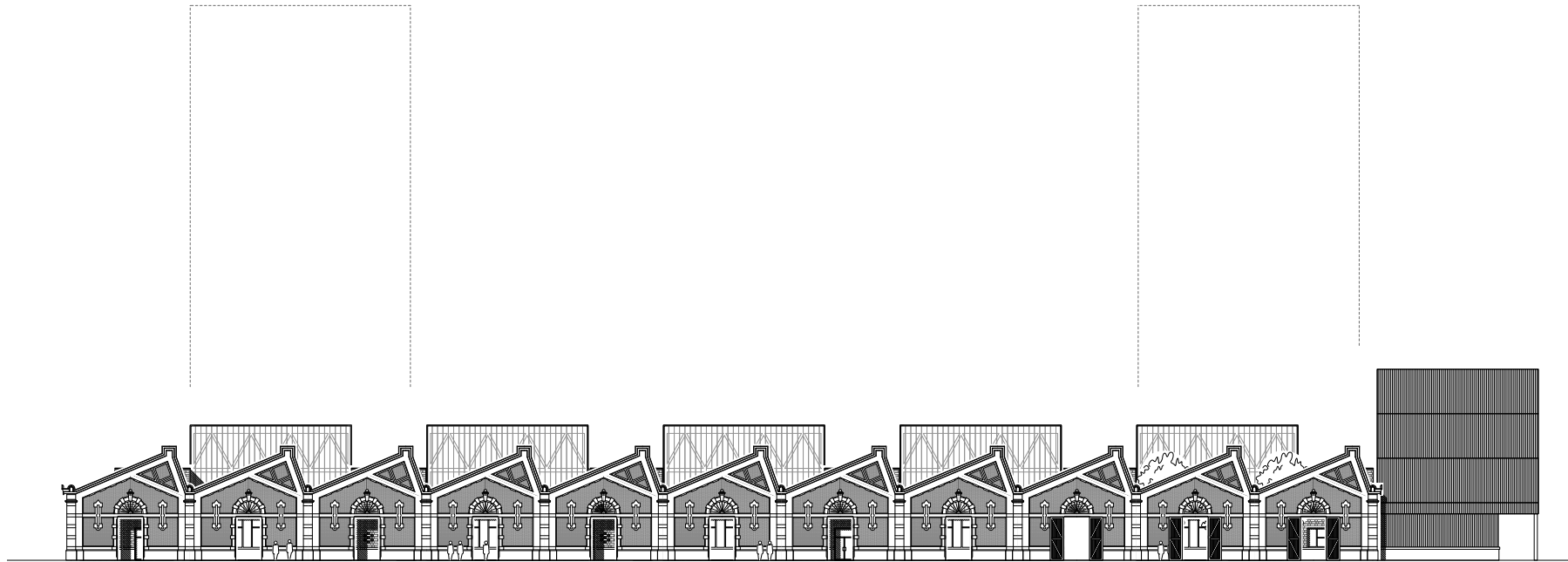


Wood workshop



Exterior spaces

Materialization



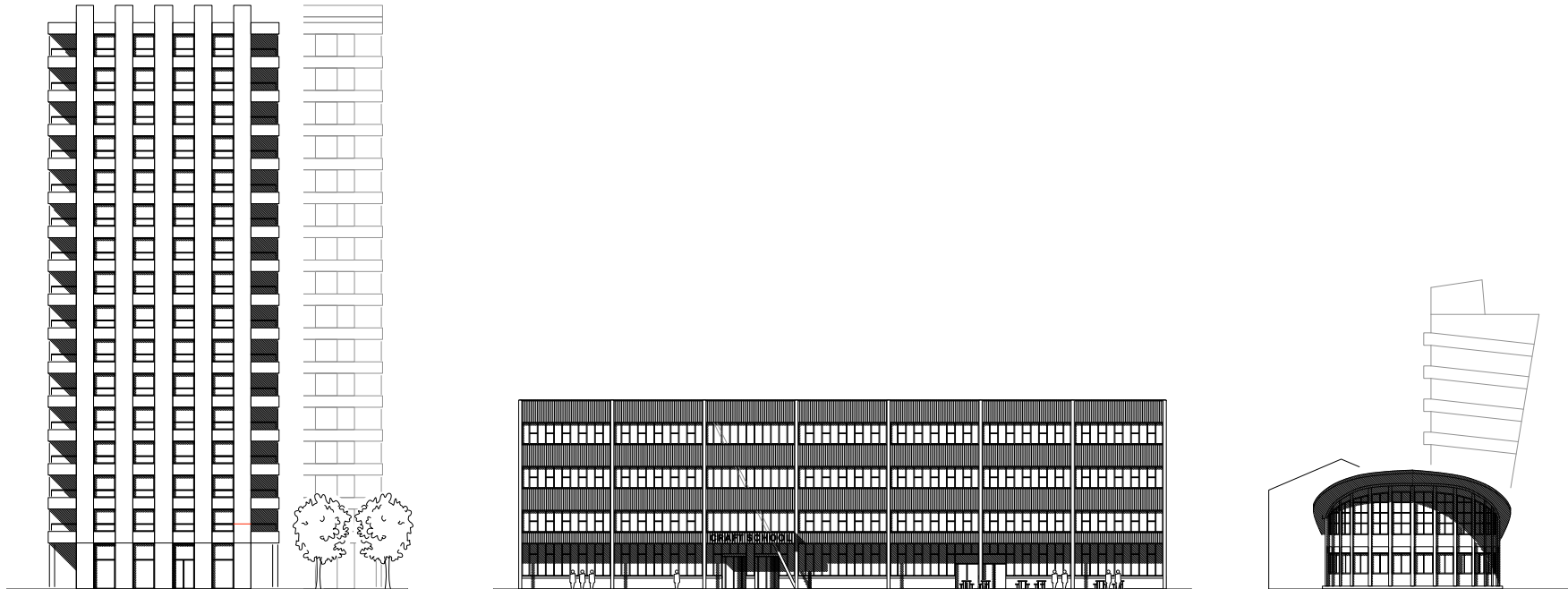
EAST elevation



Representation facade



EAST elevation



NORTH elevation



Thank you !

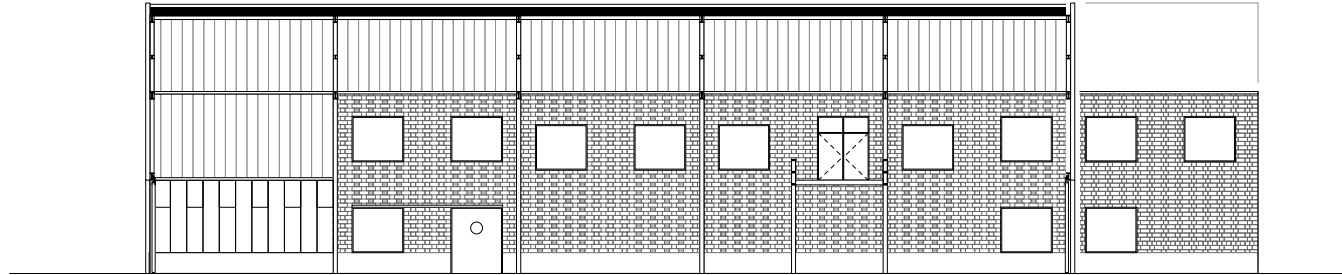
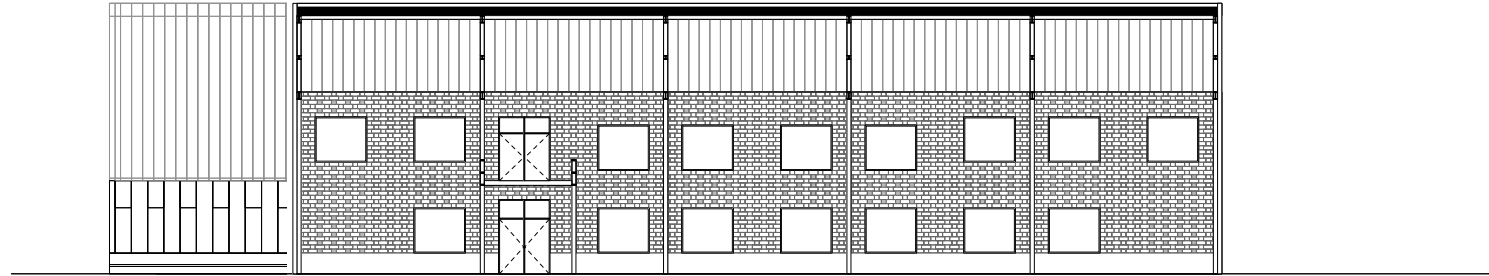














1989, Masterplan of Het Eilandje by Manuel de Sola-Morales