

# HEALING IN SIGHT

Where **transparent** design  
inspires you to **recover**  
and **grow**

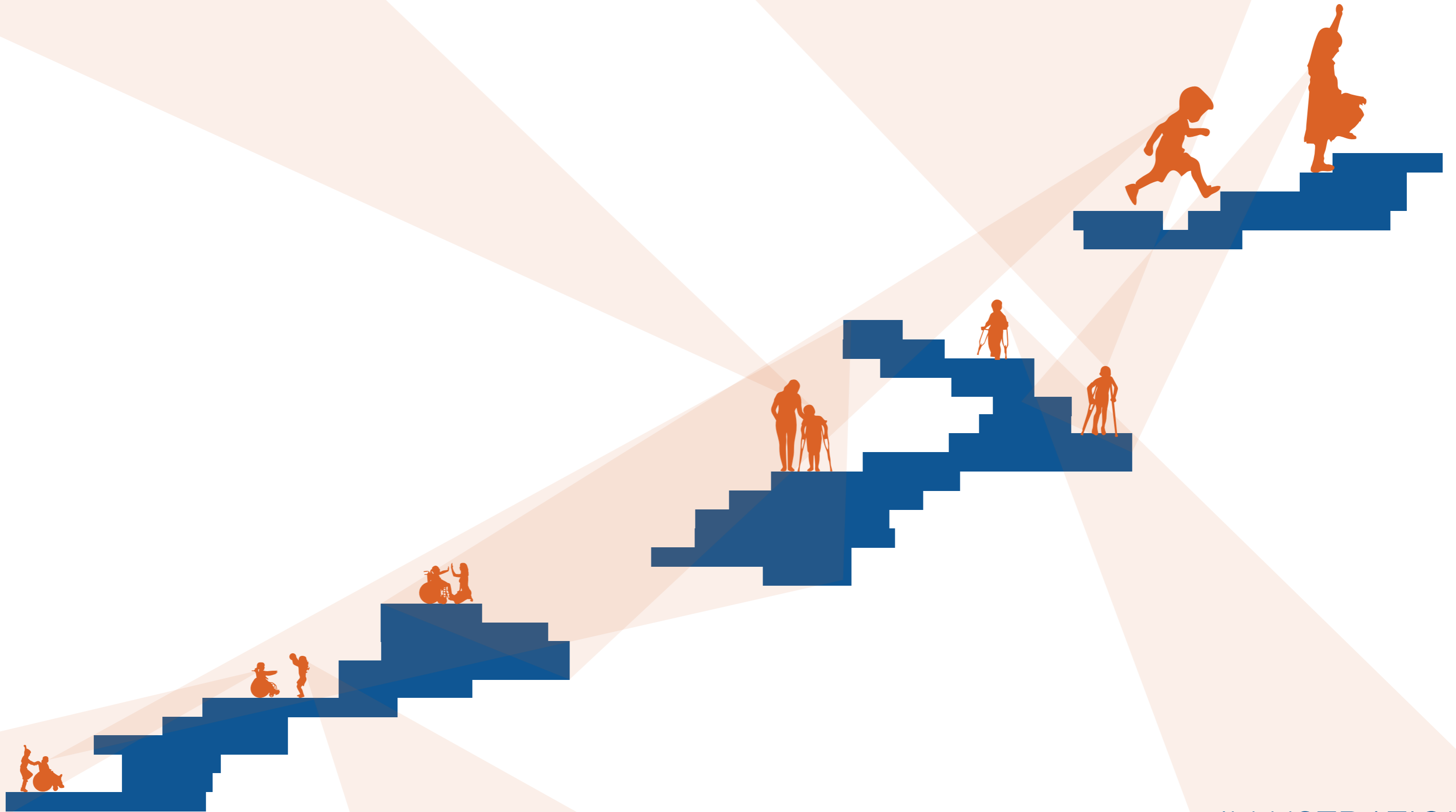


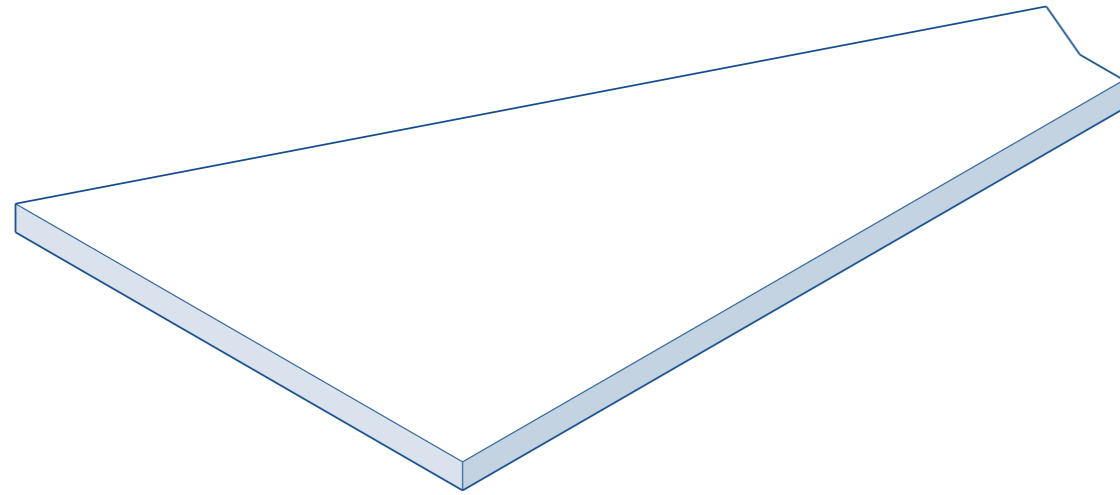
ILLUSTRATION  
Marjon  
Willemse  
June 2nd, 2026

BOOK

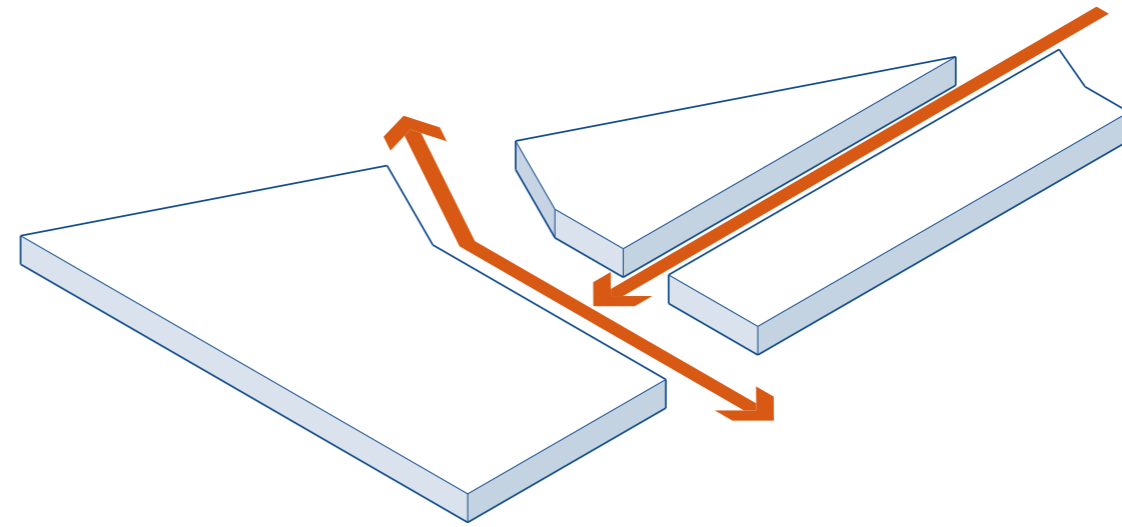
**o1**

ARCHITECTURE

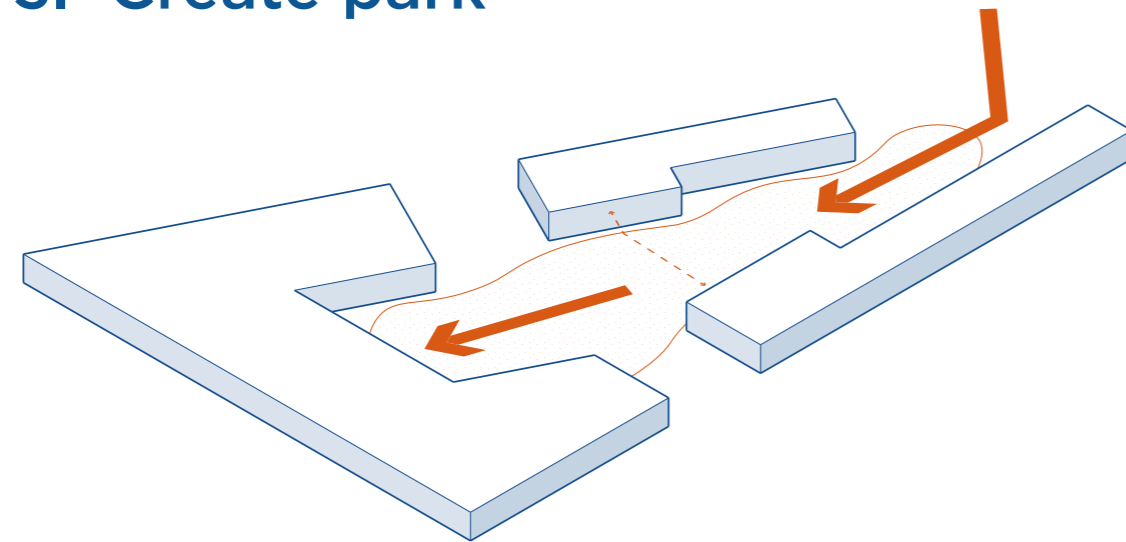
### 1. Big block



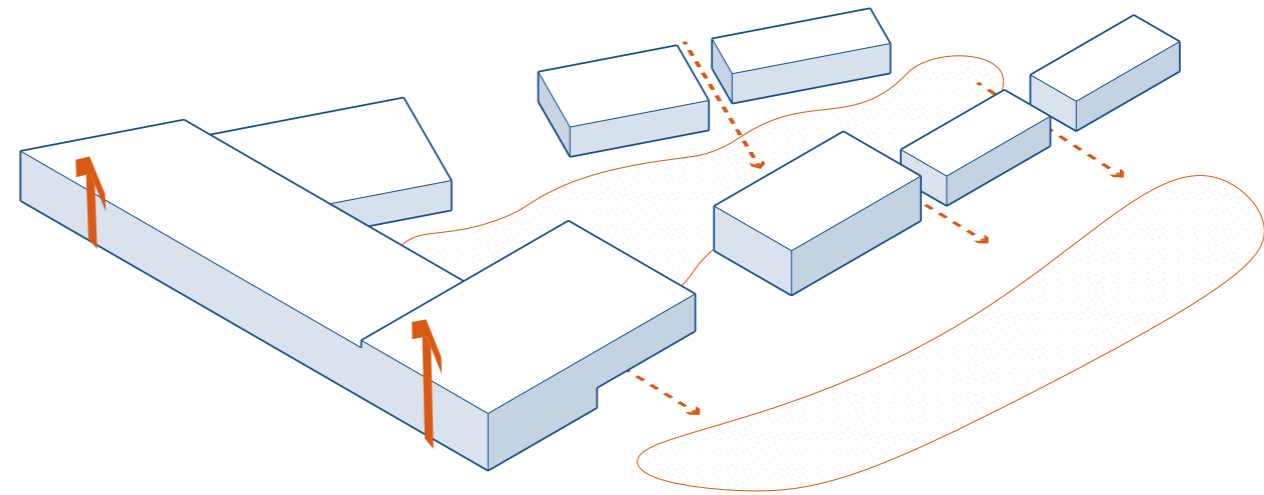
### 2. Create entrances



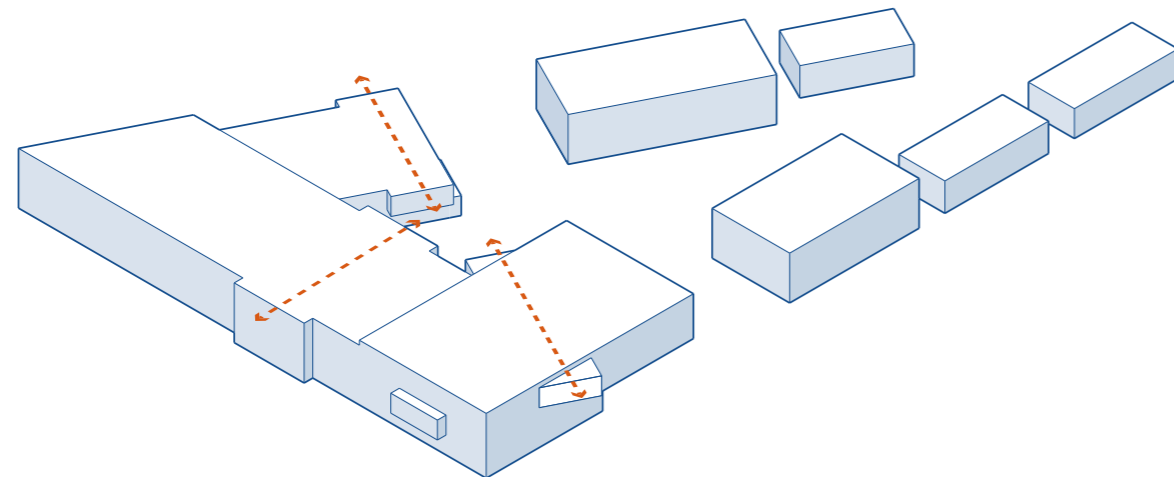
### 3. Create park



### 4. Level up and connect

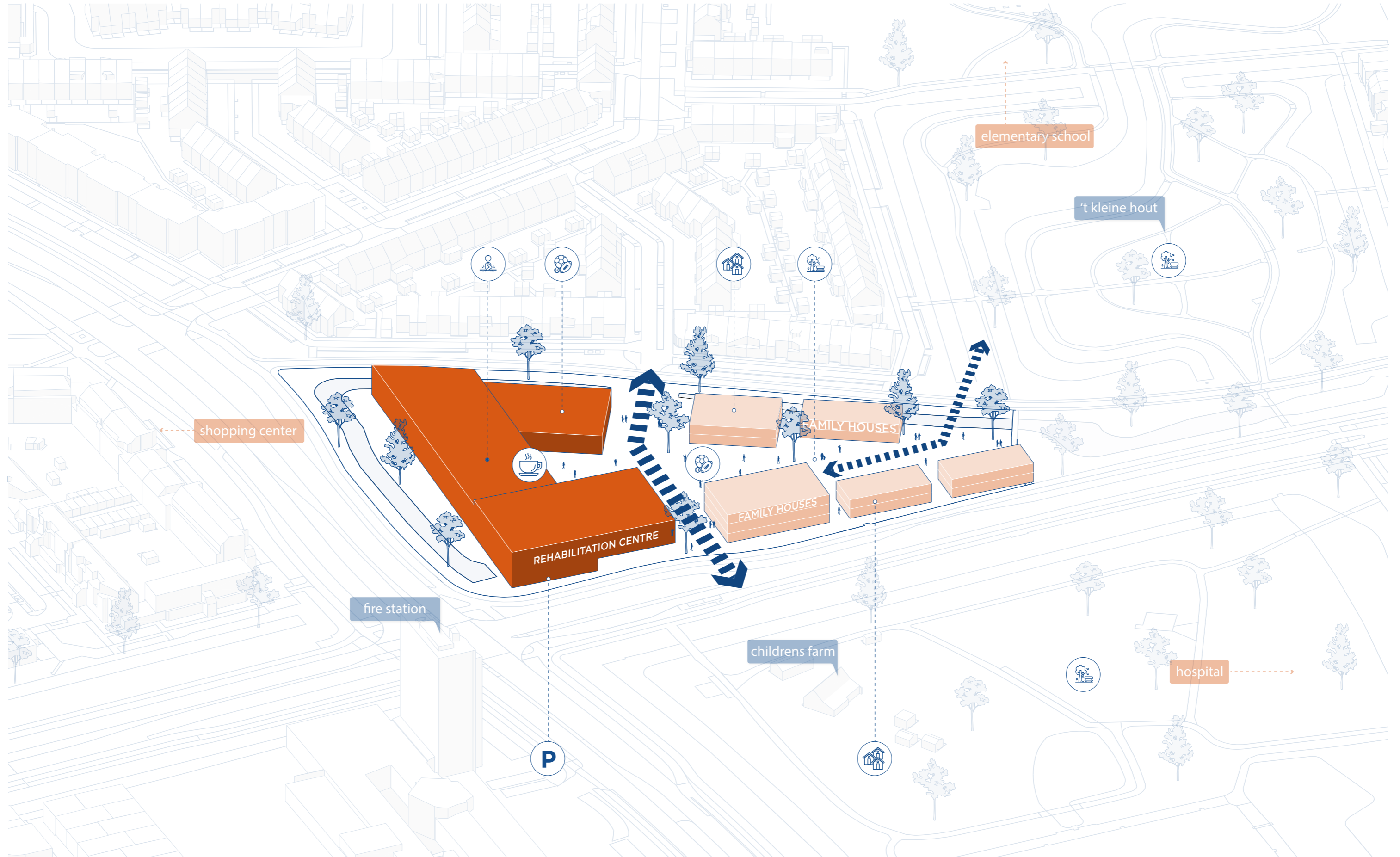


### 5. Protrude



# Site plan 3D

Bird eye





# Site plan

1:1000



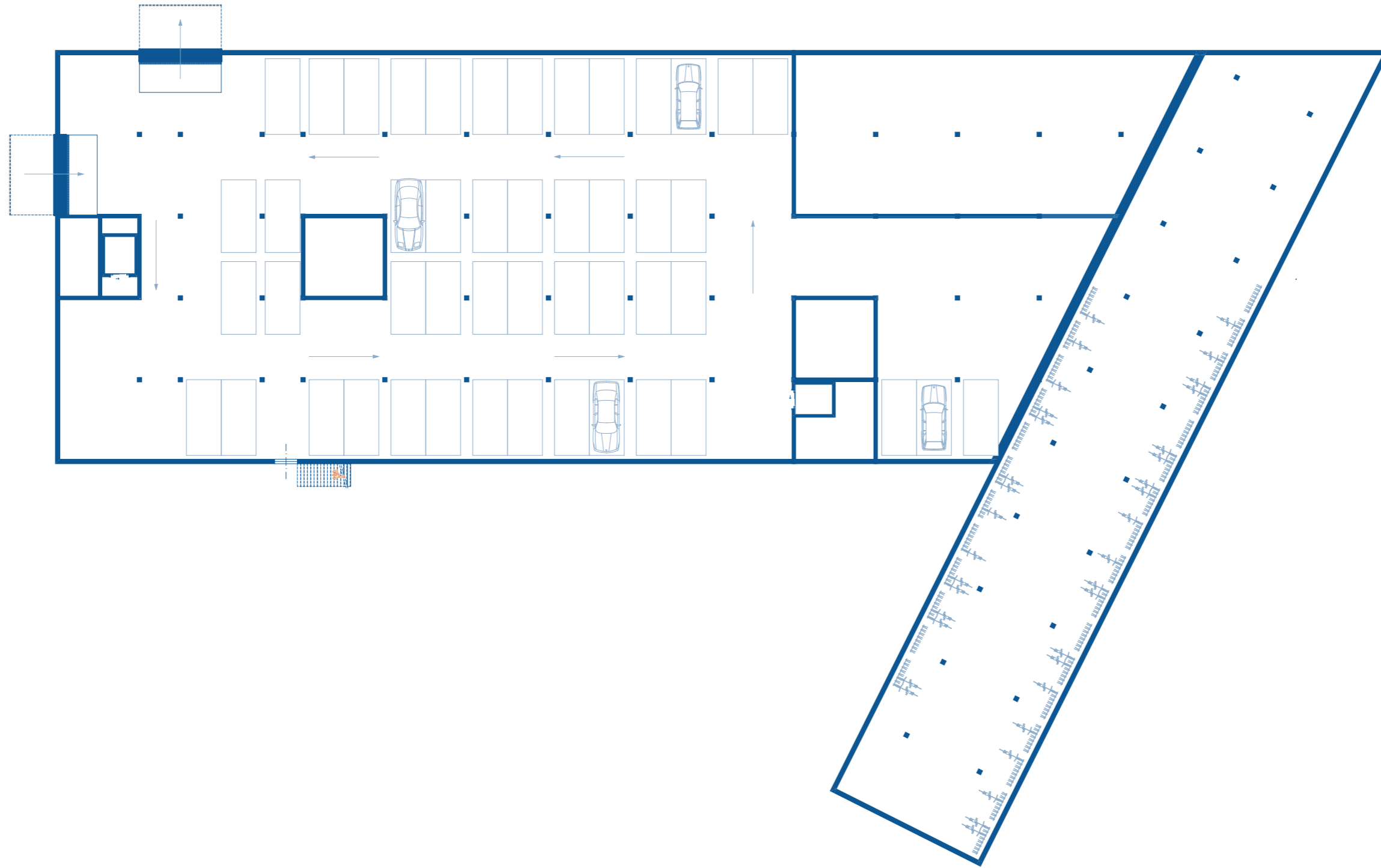
1:1000

# LIVING AXONOMETRIC



# Floorplan

1:300



1:300

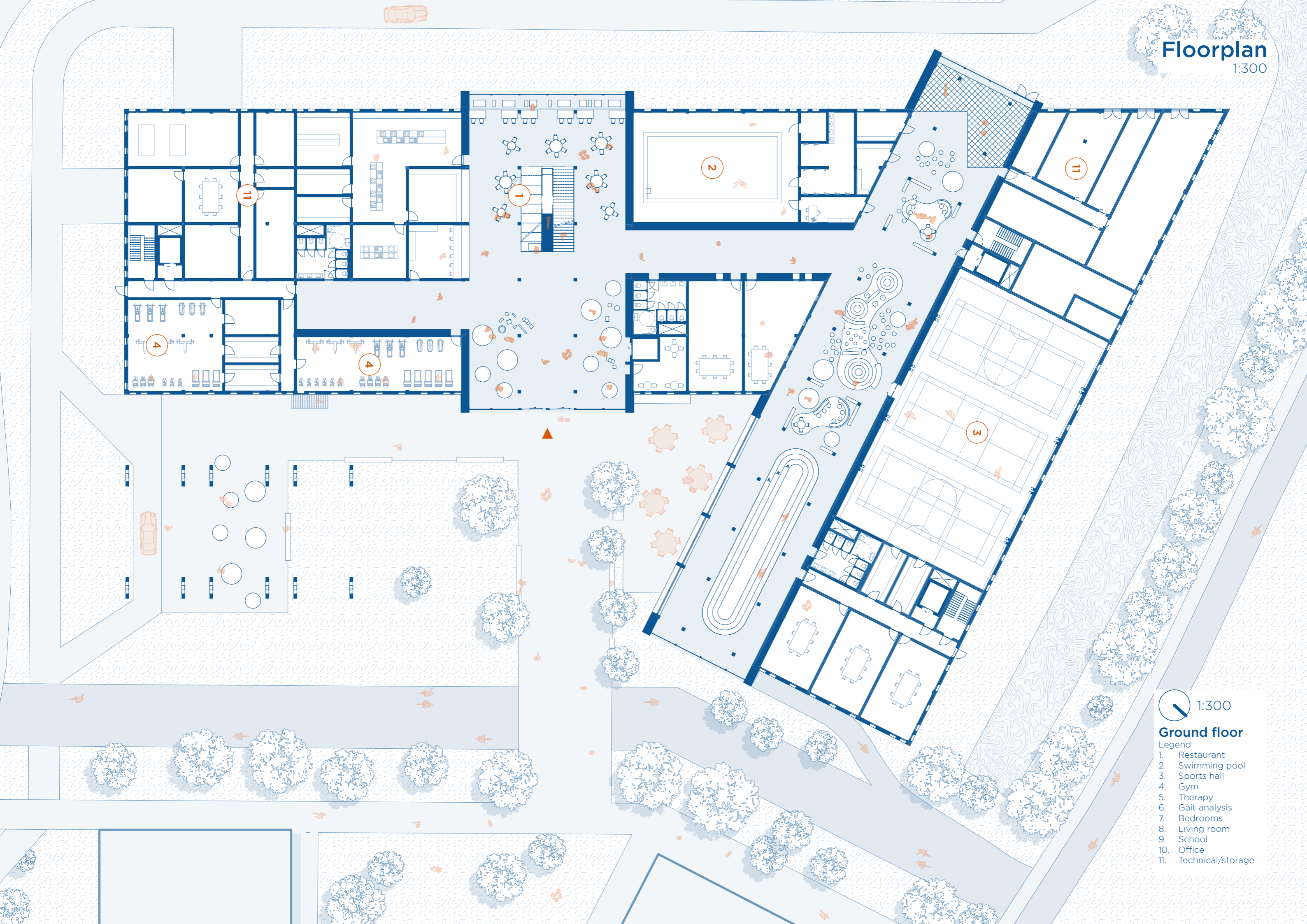
## Basement

Legend

1. Restaurant
2. Swimming pool
3. Sports hall
4. Gym
5. Therapy
6. Gait analysis
7. Bedrooms
8. Living room
9. School
10. Office
11. Technical/storage

# Floorplan

1:300



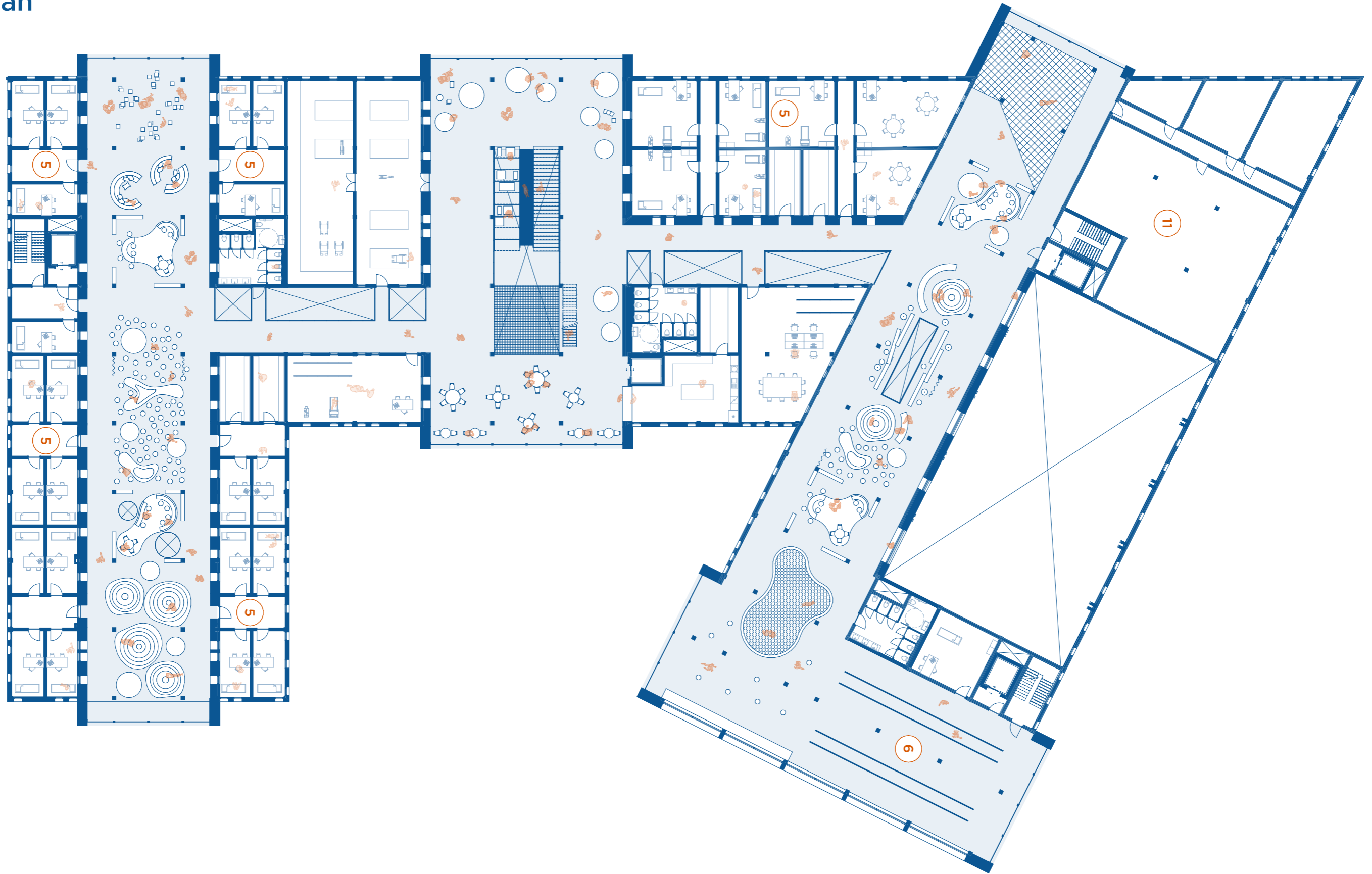
1:300

## Ground floor

- Legend
- 1. Restaurant
  - 2. Swimming pool
  - 3. Sports hall
  - 4. Gym
  - 5. Therapy
  - 6. Gait analysis
  - 7. Bedrooms
  - 8. Living room
  - 9. School
  - 10. Office
  - 11. Technical/storage

# Floorplan

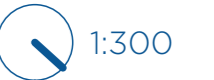
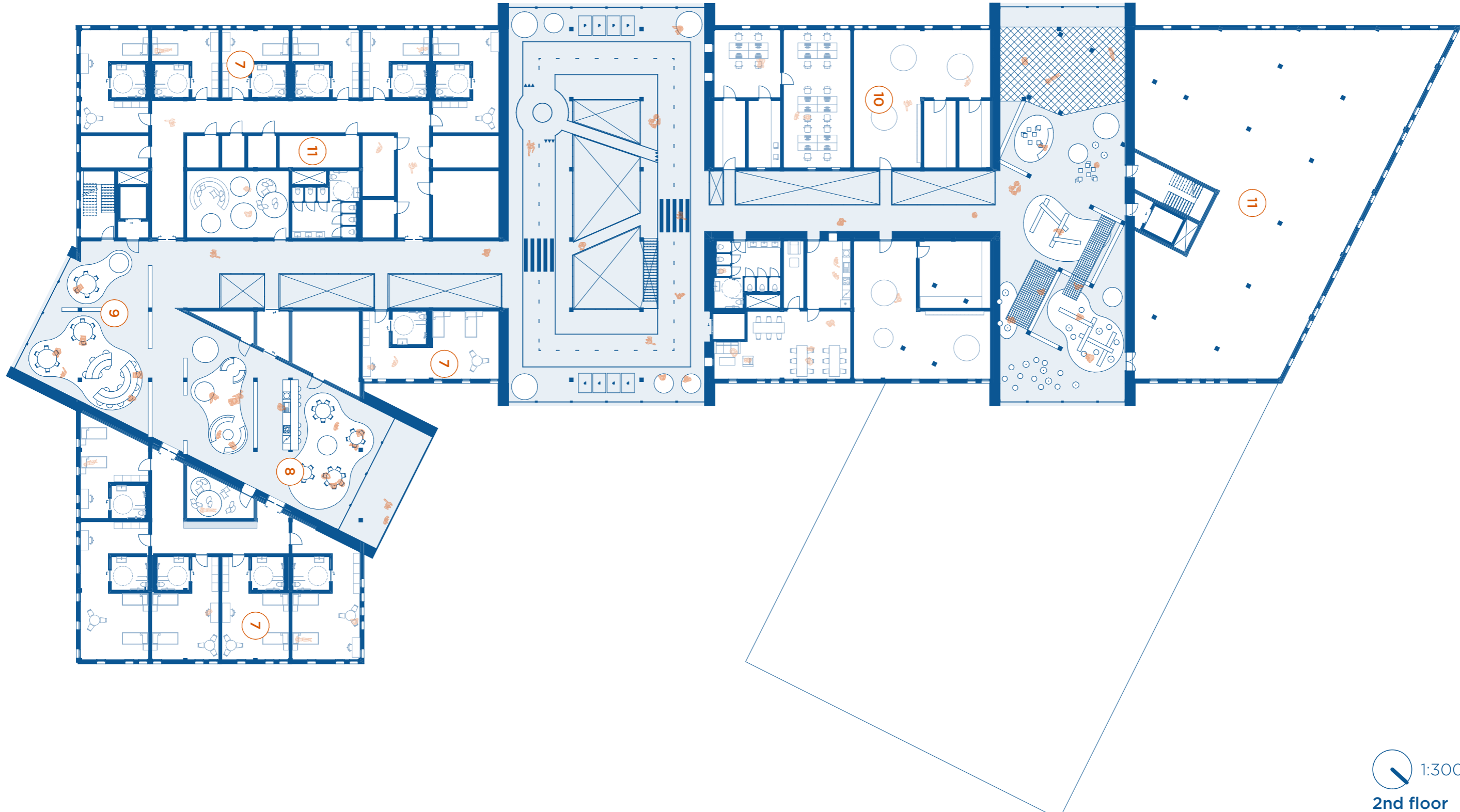
1:300



## 1st floor

Legend

1. Restaurant
2. Swimming pool
3. Sports hall
4. Gym
5. Therapy
6. Gait analysis
7. Bedrooms
8. Living room
9. School
10. Office
11. Technical/storage

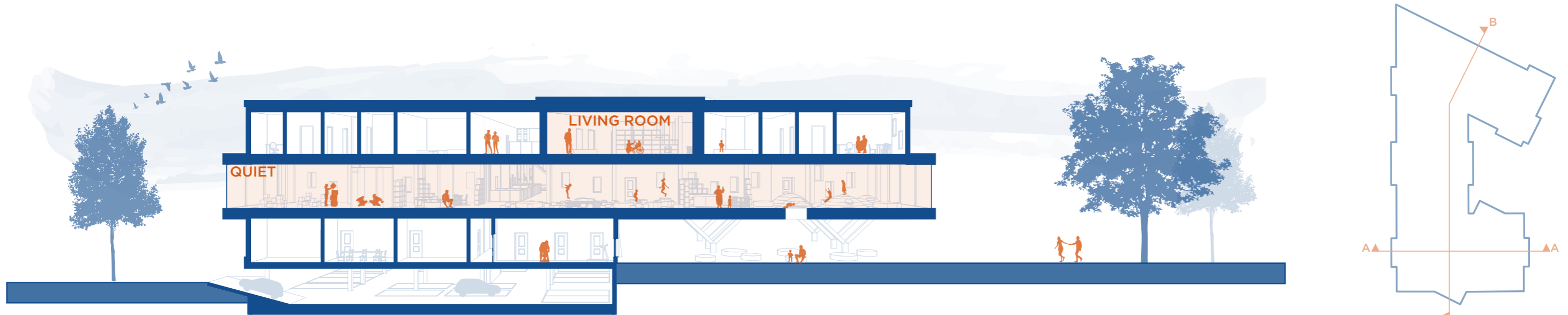


**2nd floor**

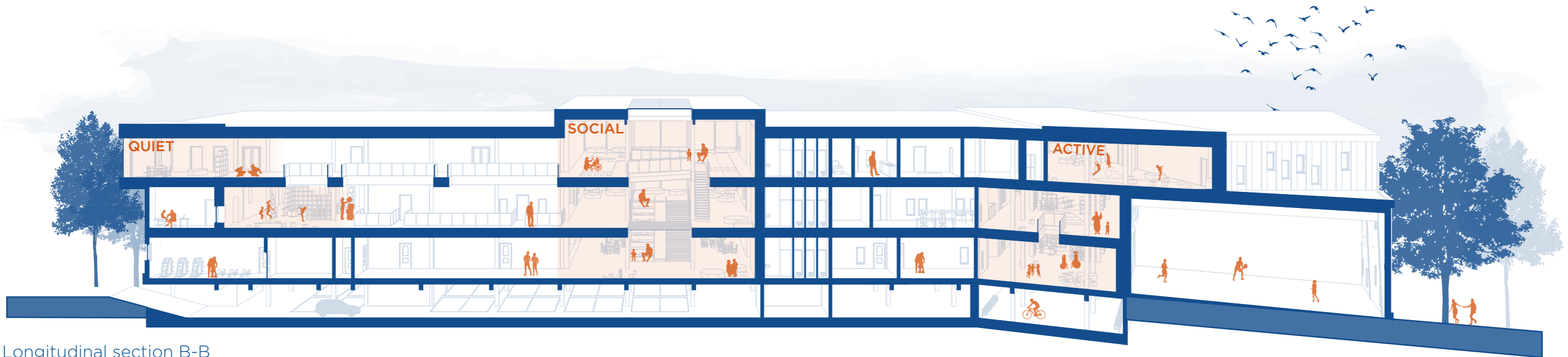
- Legend
- 1. Restaurant
  - 2. Swimming pool
  - 3. Sports hall
  - 4. Gym
  - 5. Therapy
  - 6. Gait analysis
  - 7. Bedrooms
  - 8. Living room
  - 9. School
  - 10. Office
  - 11. Technical/storage

# Sections

1:300



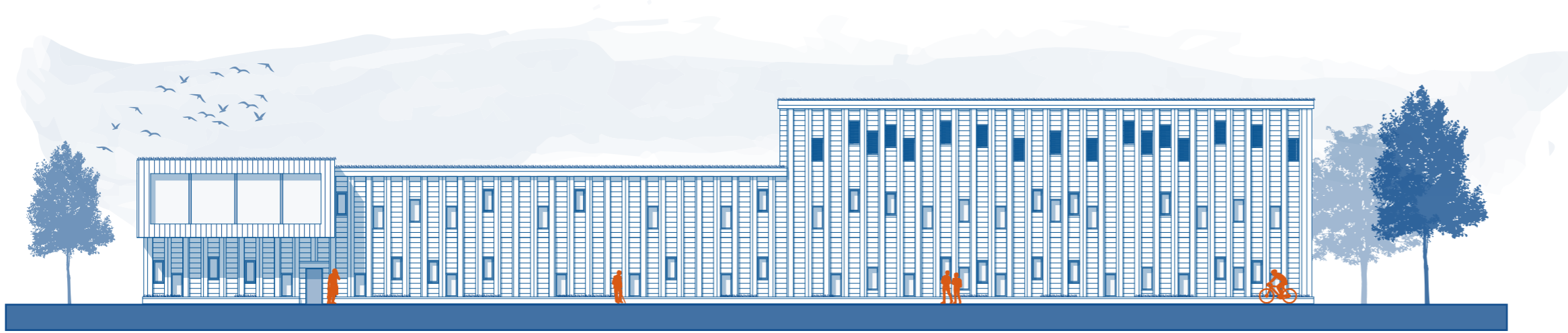
Cross section A-A  
1:300



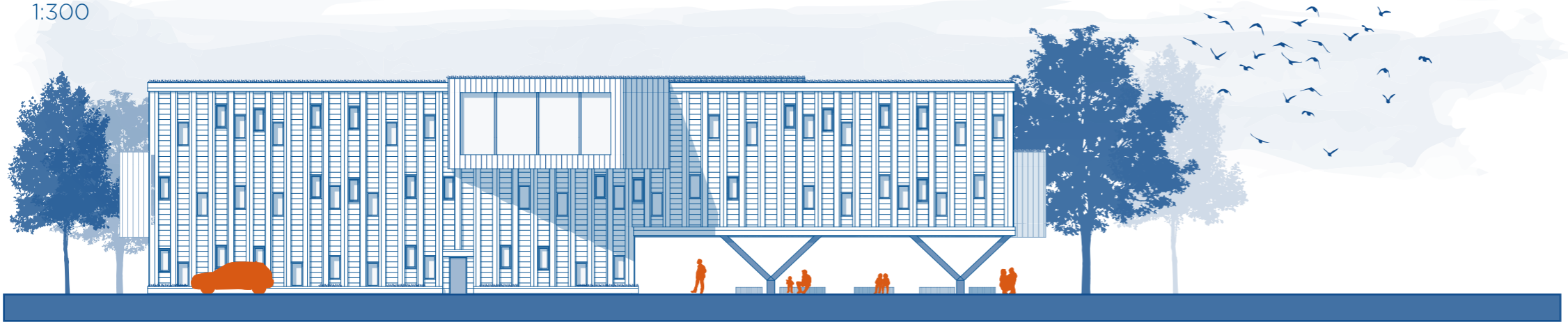
Longitudinal section B-B  
1:300

# Elevations

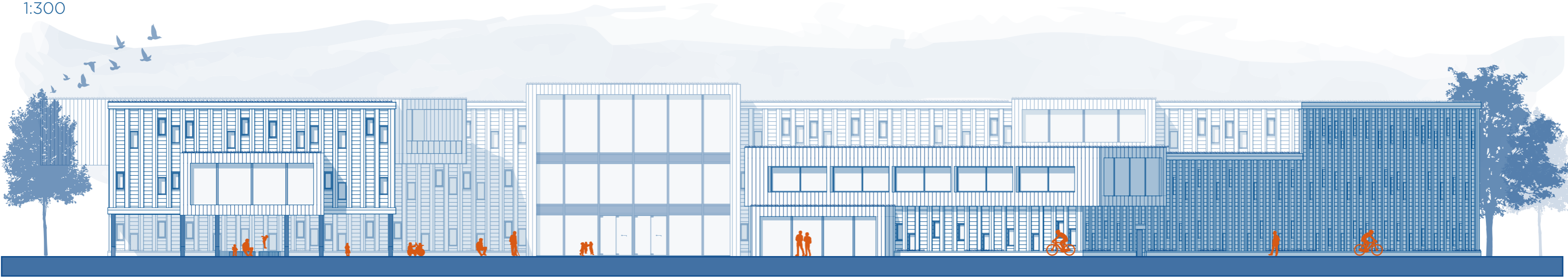
1:300



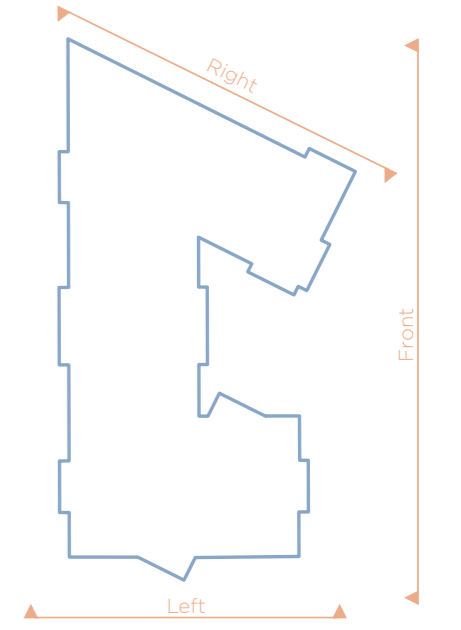
Side view - right  
1:300



Side view - left  
1:300



Front view  
1:300



## Render outside





## Render entrance





## Render wayfinding





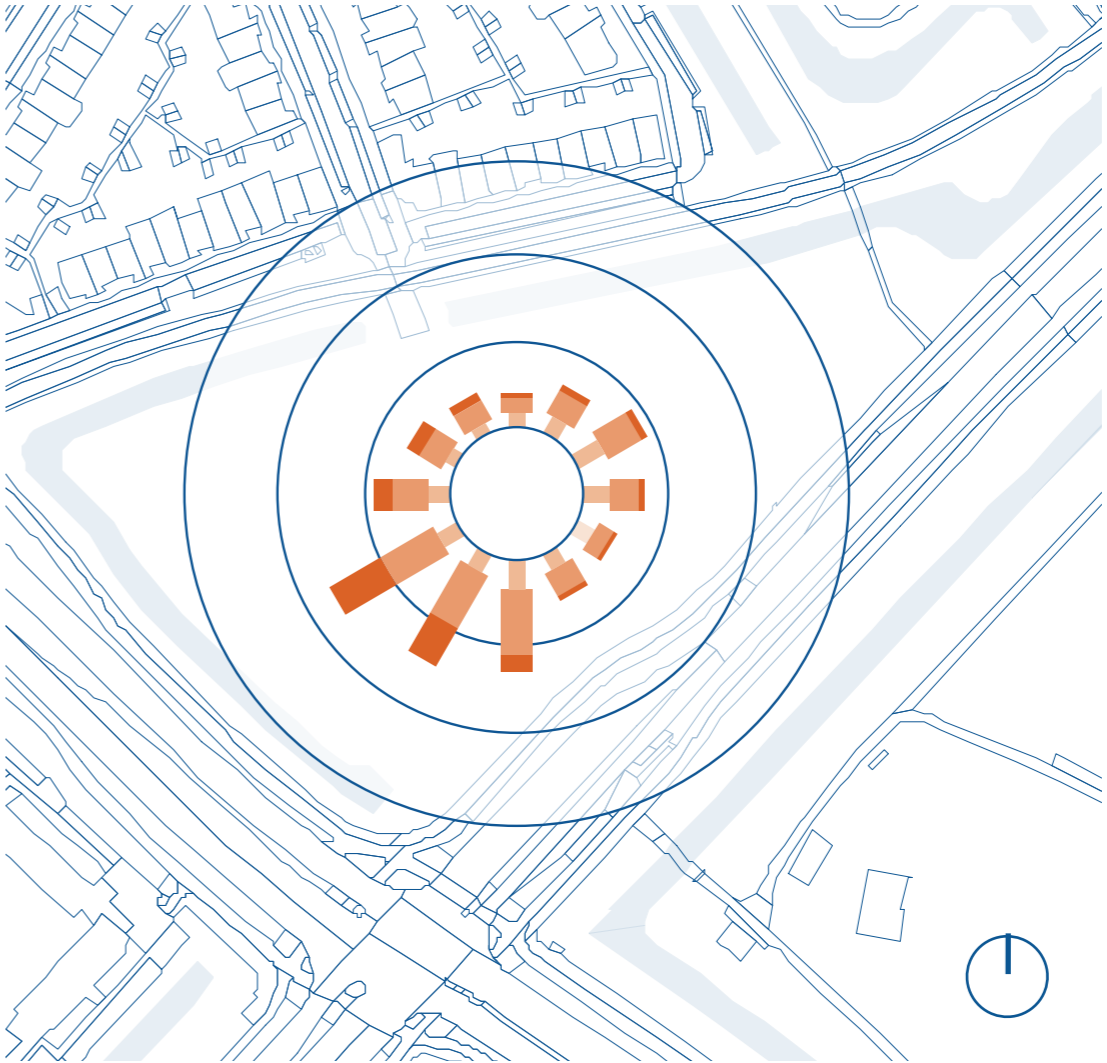
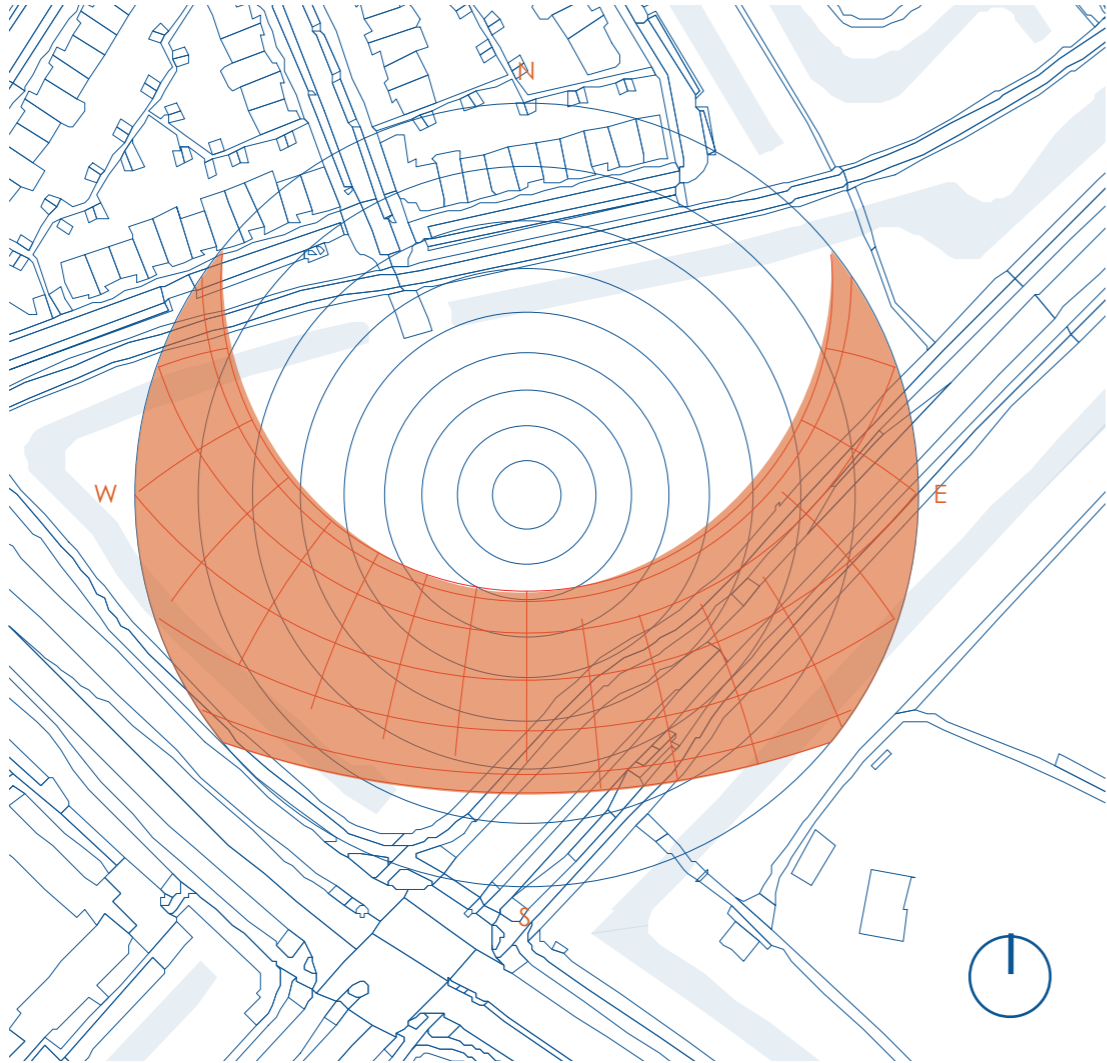
# Render sightline





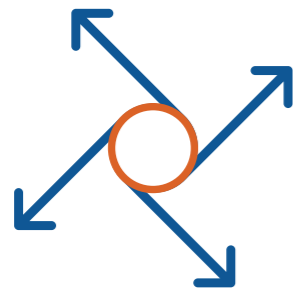
**02**

BUILDING TECHNOLOGY



# Climate

1:300



Flexibel lay-out



Low maintenance materials



Long life span



Circular/biobased materials

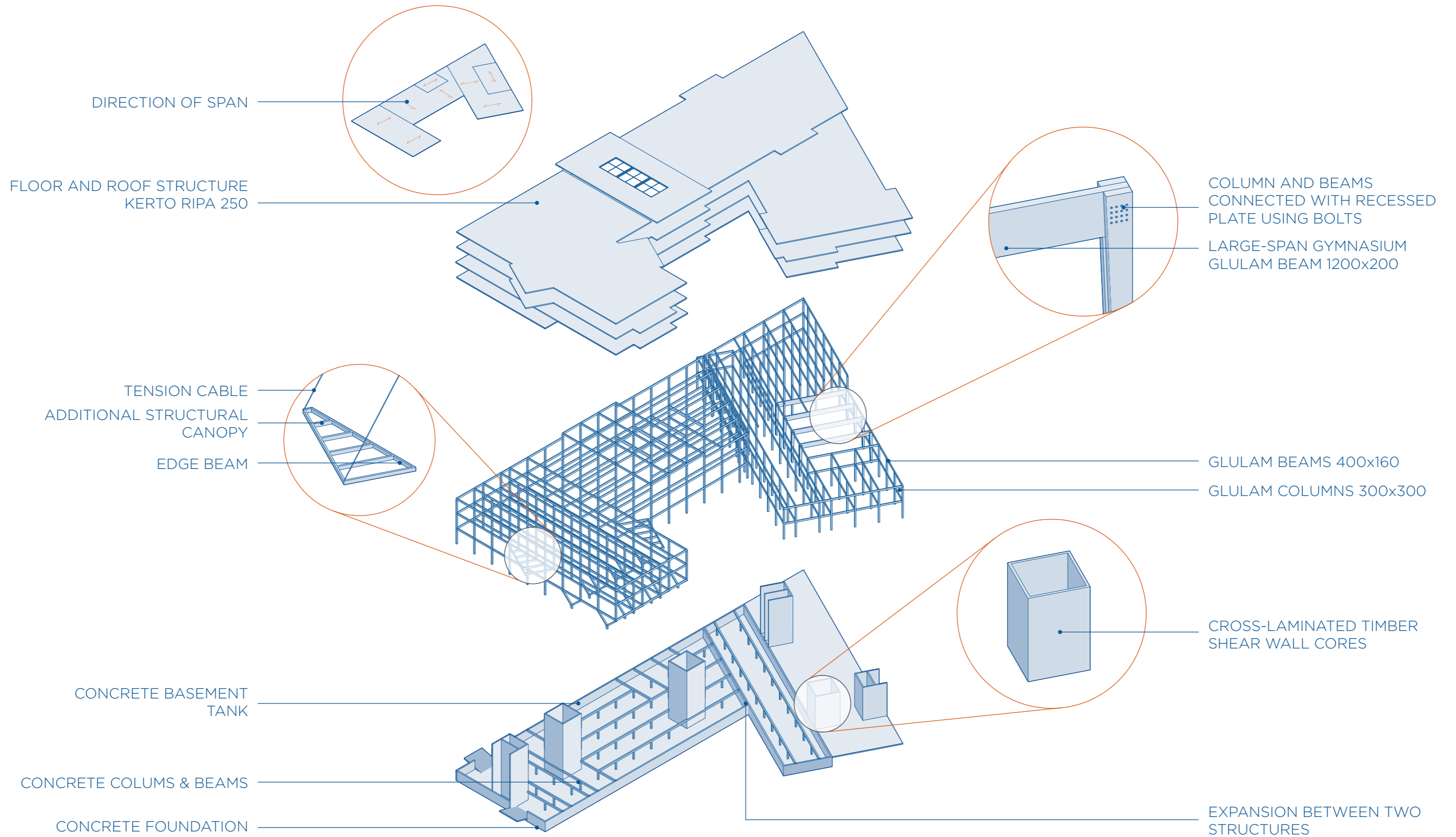


Climate adaptation



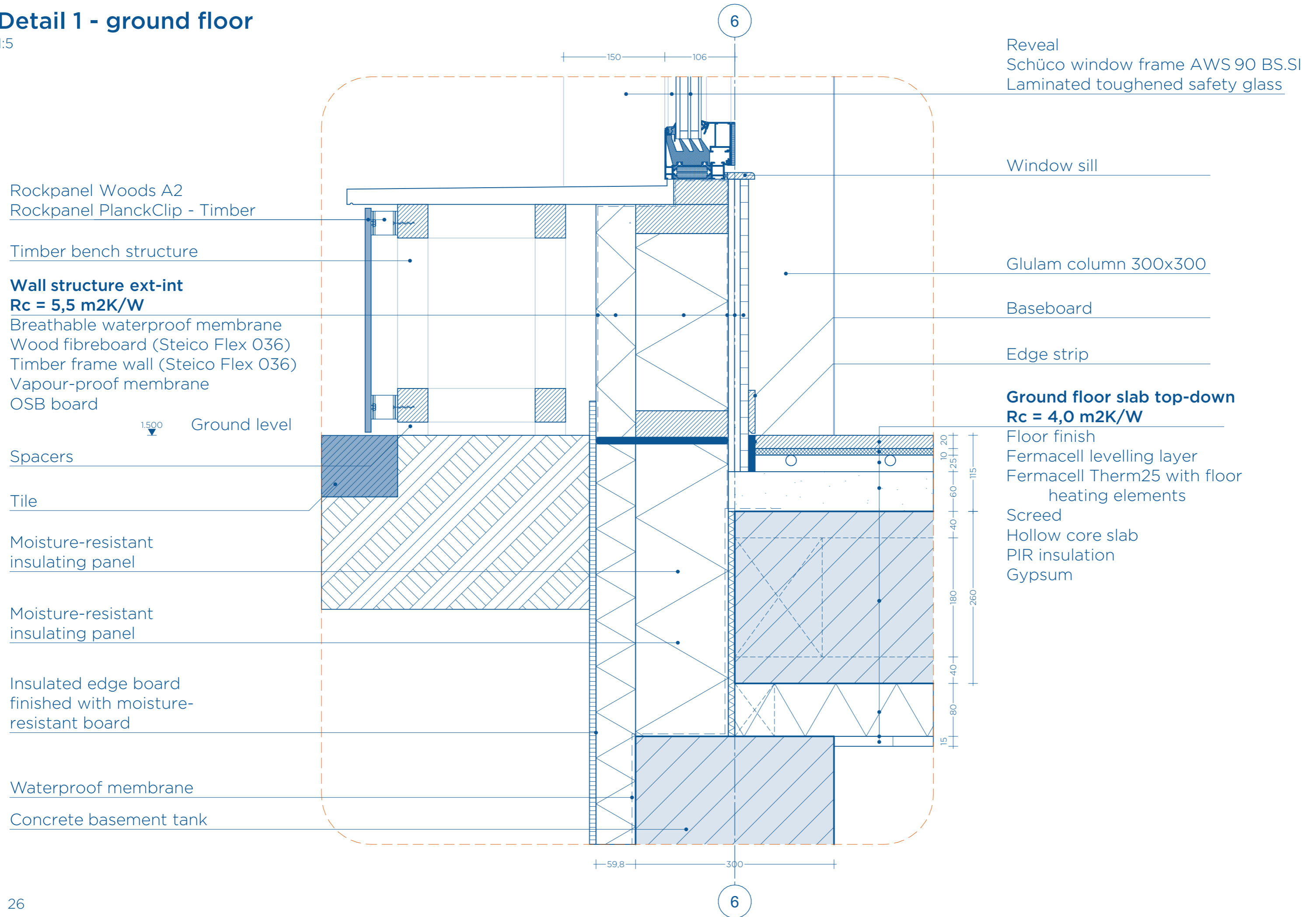
## Legend

1. Naturally ventilated parking
2. Thermal Energy Storage system provides cooling in summer and heating in winter
3. Several **Pluvia's** distributed across the roof, with the water being channelled down through the shafts
4. Floor heating that warms in winter and cools in summer
5. Impulse fan creates a controlled airflow that extracts polluted air from the car park and supplies fresh air
6. Mechanical supply and exhaust ventilation
7. Green roof contributes to climate adaptation by reducing heat and collecting rainwater
8. An area with shade in summer
9. Wooden structure
10. Automatic sunshading reacts as soon as the sun comes out and reduces heat build-up by blocking sunlight from outside
11. Summer sun
12. Winter sun



# Detail 1 - ground floor

1:5



Rockpanel Woods A2  
Rockpanel PlanckClip - Timber

Timber bench structure

**Wall structure ext-int**  
**Rc = 5,5 m2K/W**

Breathable waterproof membrane  
Wood fibreboard (Steico Flex 036)  
Timber frame wall (Steico Flex 036)  
Vapour-proof membrane  
OSB board

1,500 Ground level

Spacers

Tile

Moisture-resistant insulating panel

Moisture-resistant insulating panel

Insulated edge board finished with moisture-resistant board

Waterproof membrane

Concrete basement tank

Reveal  
Schüco window frame AWS 90 BS.SI  
Laminated toughened safety glass

Window sill

Glulam column 300x300

Baseboard

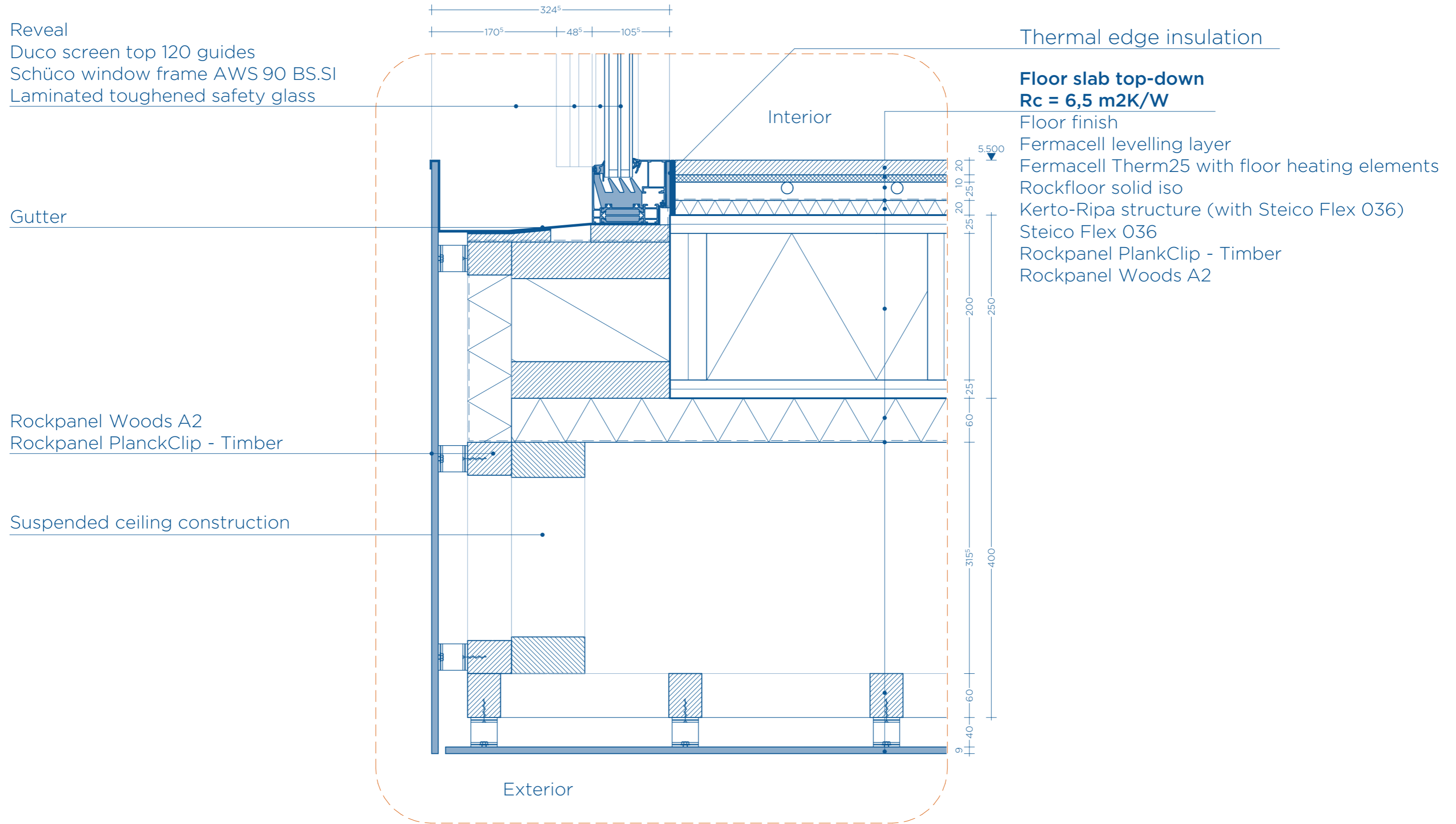
Edge strip

**Ground floor slab top-down**  
**Rc = 4,0 m2K/W**

Floor finish  
Fermacell levelling layer  
Fermacell Therm25 with floor heating elements  
Screed  
Hollow core slab  
PIR insulation  
Gypsum

# Detail 2 - Window frame bottom

1:5



# Detail 3 - Window frame top

1:5

E-profile DTP alu

Gravel

Roval-Classic<sup>PLUS</sup>  
Aluminium edge profile

All-round primed plywood

Compriband

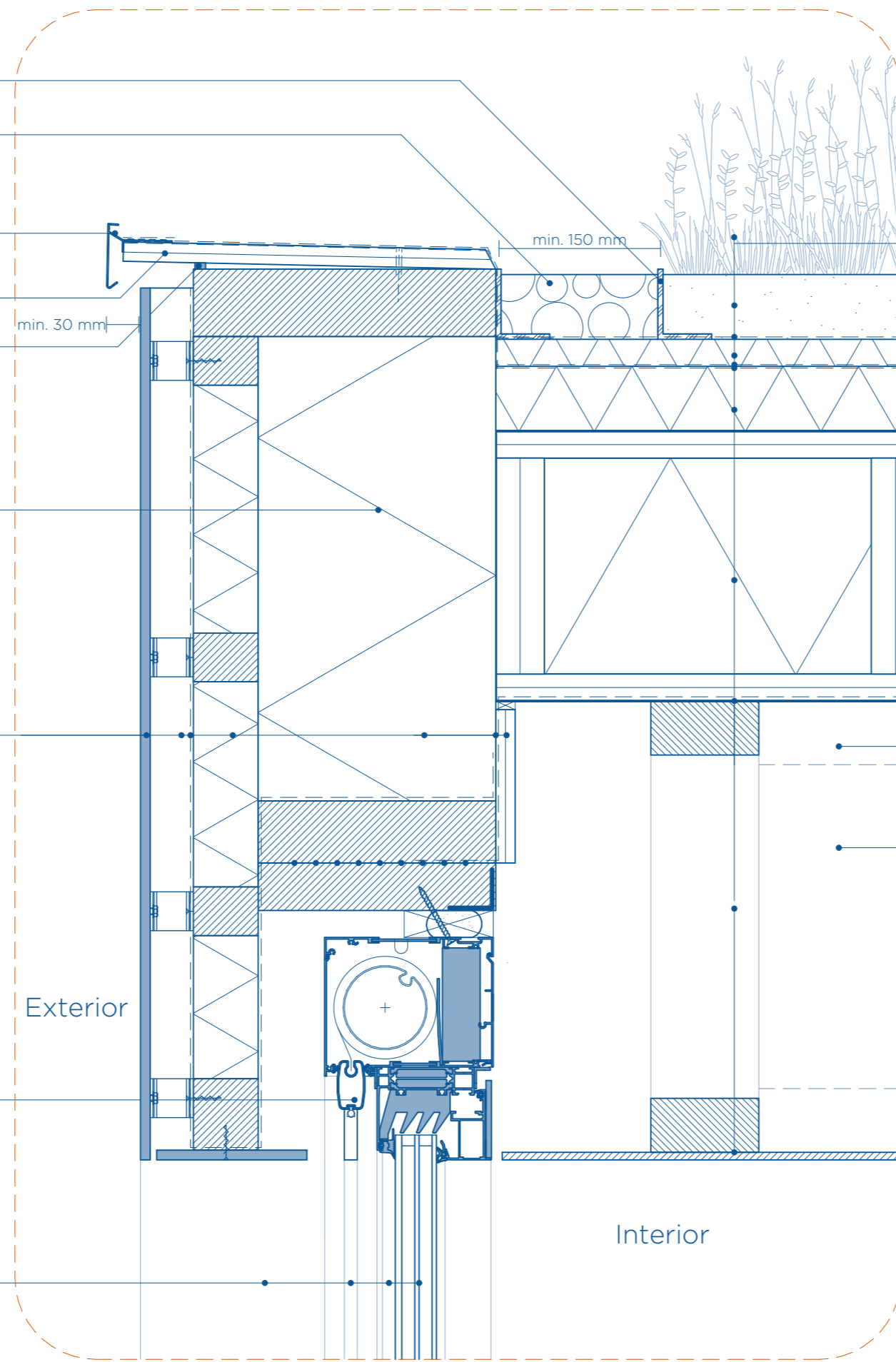
Timber frame for parapet,  
insulated

## Wall structure ext-int Rc = 5,5 m2K/W

Rockpanel Woods A2  
Rockpanel PlanckClip - Timber  
Breathable waterproof membrane  
Wood fibreboard (Steico Flex 036)  
Timber frame wall (Steico Flex 036)  
Vapour-proof membrane  
OSB board

Duco screen top 120

Reveal  
Duco screen top 120 guides  
Schüco window frame AWS 90 BS.SI  
Laminated toughened safety glass



## Roof structure top-down (Rc = 6,5 m2K/W)

Vegetation  
Substrate E-L Optigrün 60mm  
Optigrün filter  
Optigrün FKD 25 drainage  
Optigrün protective membrane RMS 900  
Root-resistant EPDM roof covering  
SteicoRoof insulation 60mm  
Kerto-Ripa structure (with Steico Flex 036)  
Vapor control layer  
Suspended ceiling construction  
Perforated aluminium panels

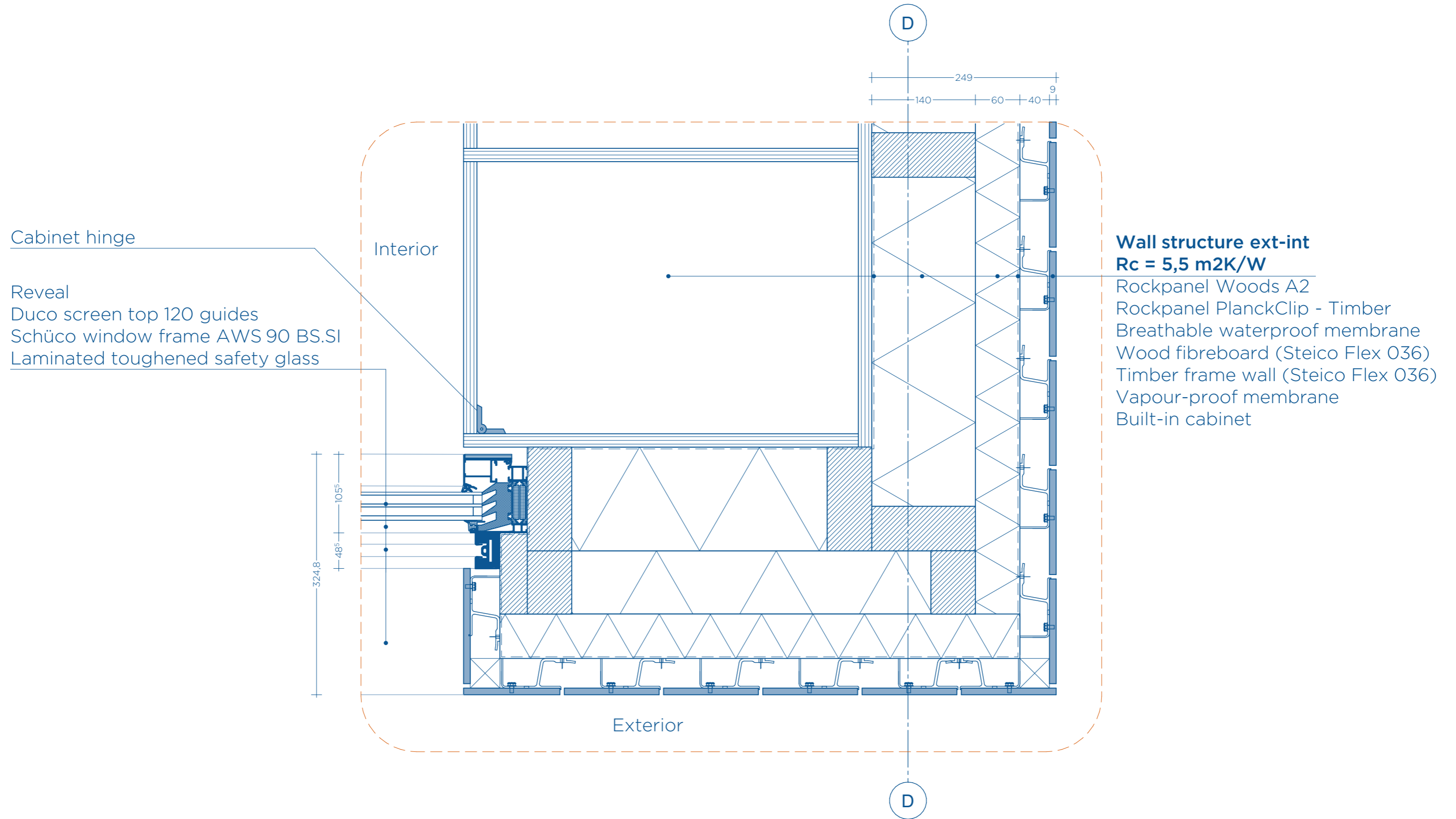
Glulam beam 160x400

Branch airduct 150 mm

170<sup>5</sup> | 48<sup>5</sup> | 105<sup>5</sup>  
324<sup>5</sup>

# Detail 4 - Window frame horizontal

1:5



# Detail 5 - Roof

1:5

E-profile DTP alu

Gravel

Roval-Classic<sup>PLUS</sup>  
Aluminium edge profile

All-round primed plywood

Compriband

Timber frame for parapet,  
insulated

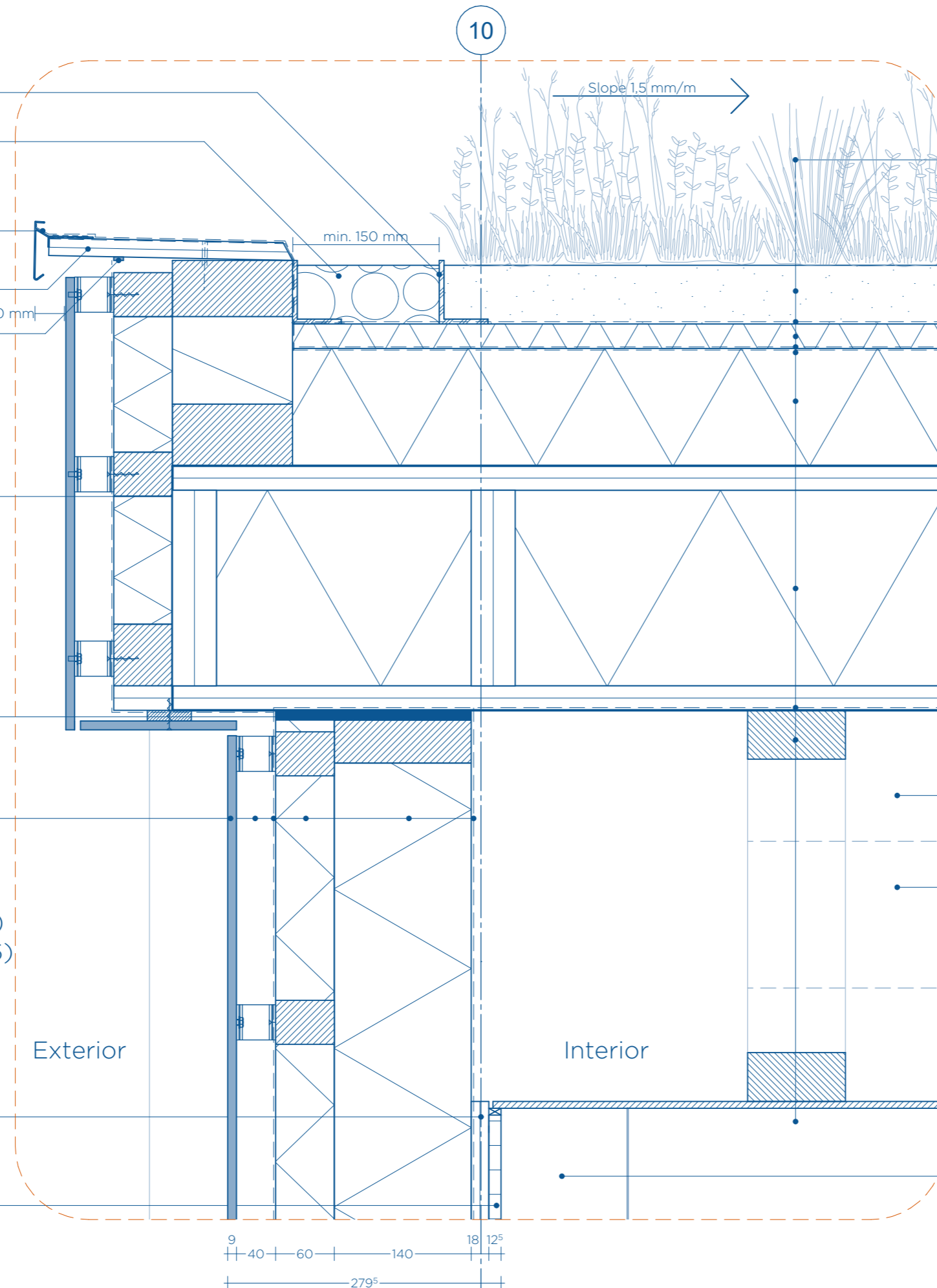
Adjustment space

**Wall structure ext-int**  
**Rc = 5,5 m<sup>2</sup>K/W**

Rockpanel Woods A2  
Rockpanel PlanckClip - Timber  
Breathable waterproof membrane  
Wood fibreboard (Steico Flex 036)  
Timber frame wall (Steico Flex 036)  
Vapour-proof membrane

OSB board

OSB board



**Roof structure top-down**  
**(Rc = 8,6 m<sup>2</sup>K/W)**

Vegetation  
Substrate E-L Optigrün 60mm  
Optigrün filter  
Optigrün FKD 25 drainage  
Optigrün protective membrane RMS 900  
Root-resistant EPDM roof covering  
SteicoRoof insulation 180mm  
Kerto-Ripa structure (with Steico Flex 036)  
Vapor control layer  
Suspended ceiling construction  
Perforated aluminium panels

Glulam beam 160x400

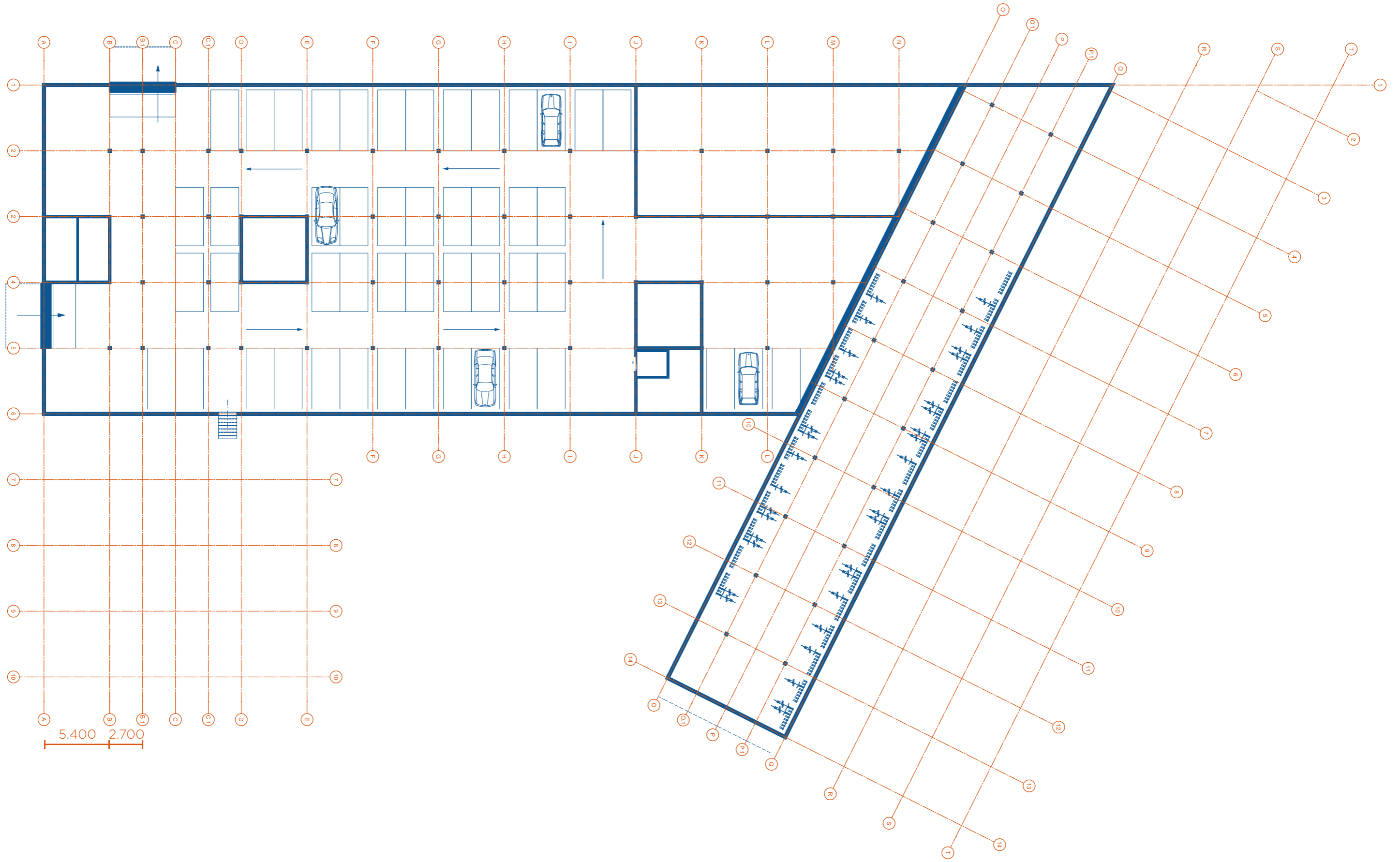
Branch airduct 150 mm

Glulam column 300x300

9 40 60 140 18 12<sup>5</sup>  
279<sup>5</sup>

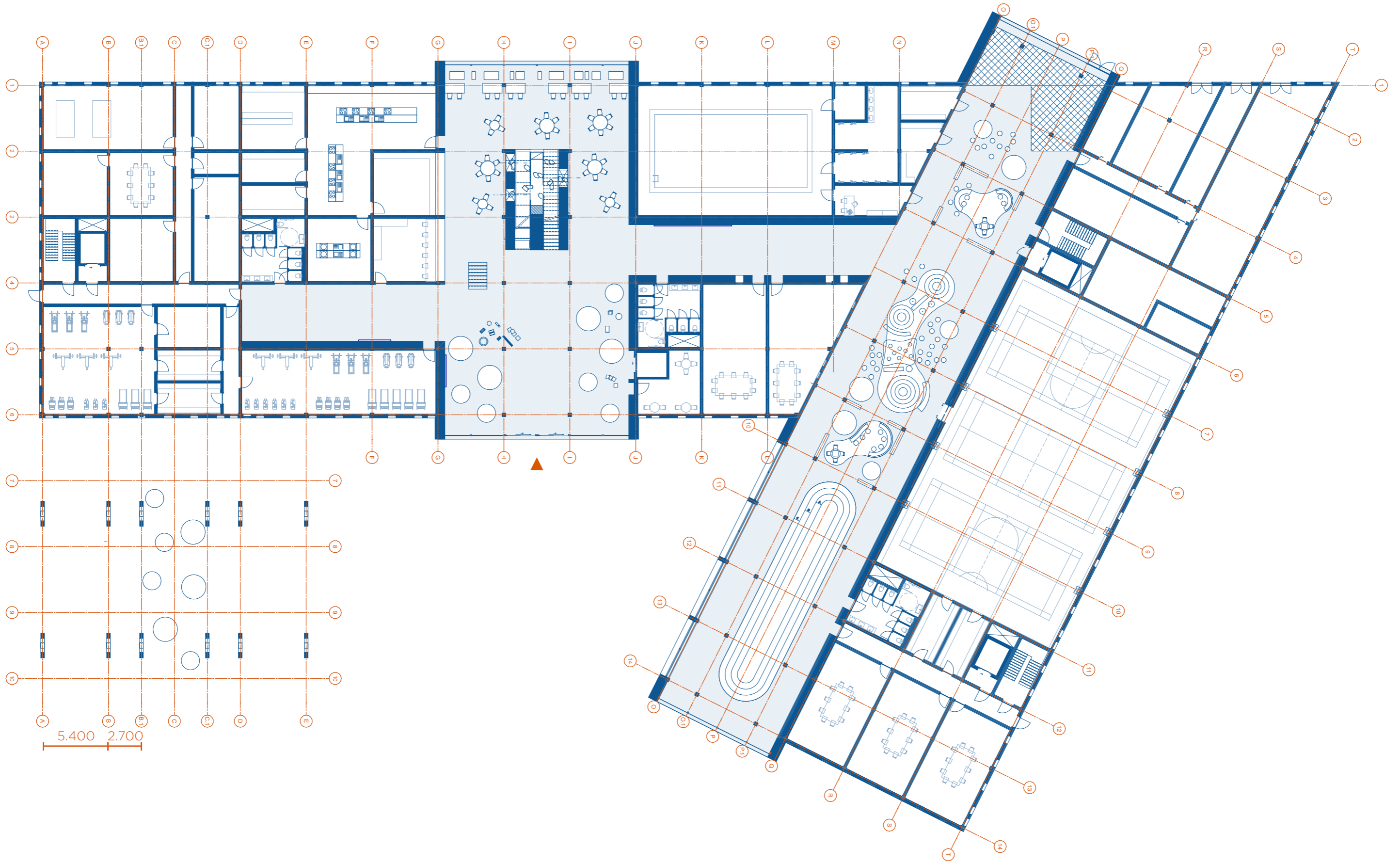
# Floorplans with grid - basement

1:300



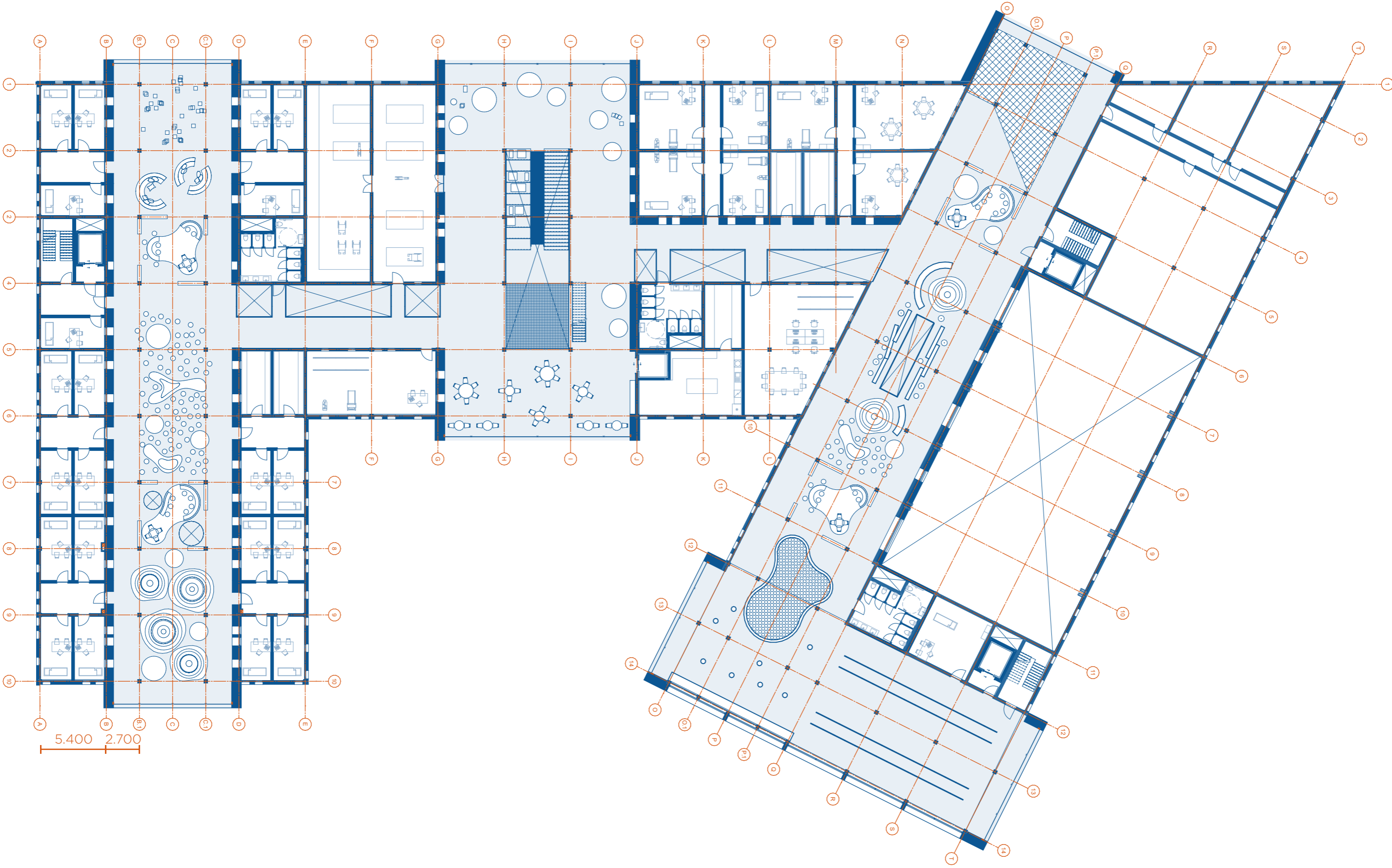
# Floorplans with grid - ground floor

1:300



Floorplans with grid - 1st floor

1:300



1:300

# Floorplans with grid - 2nd floor

1:300

