

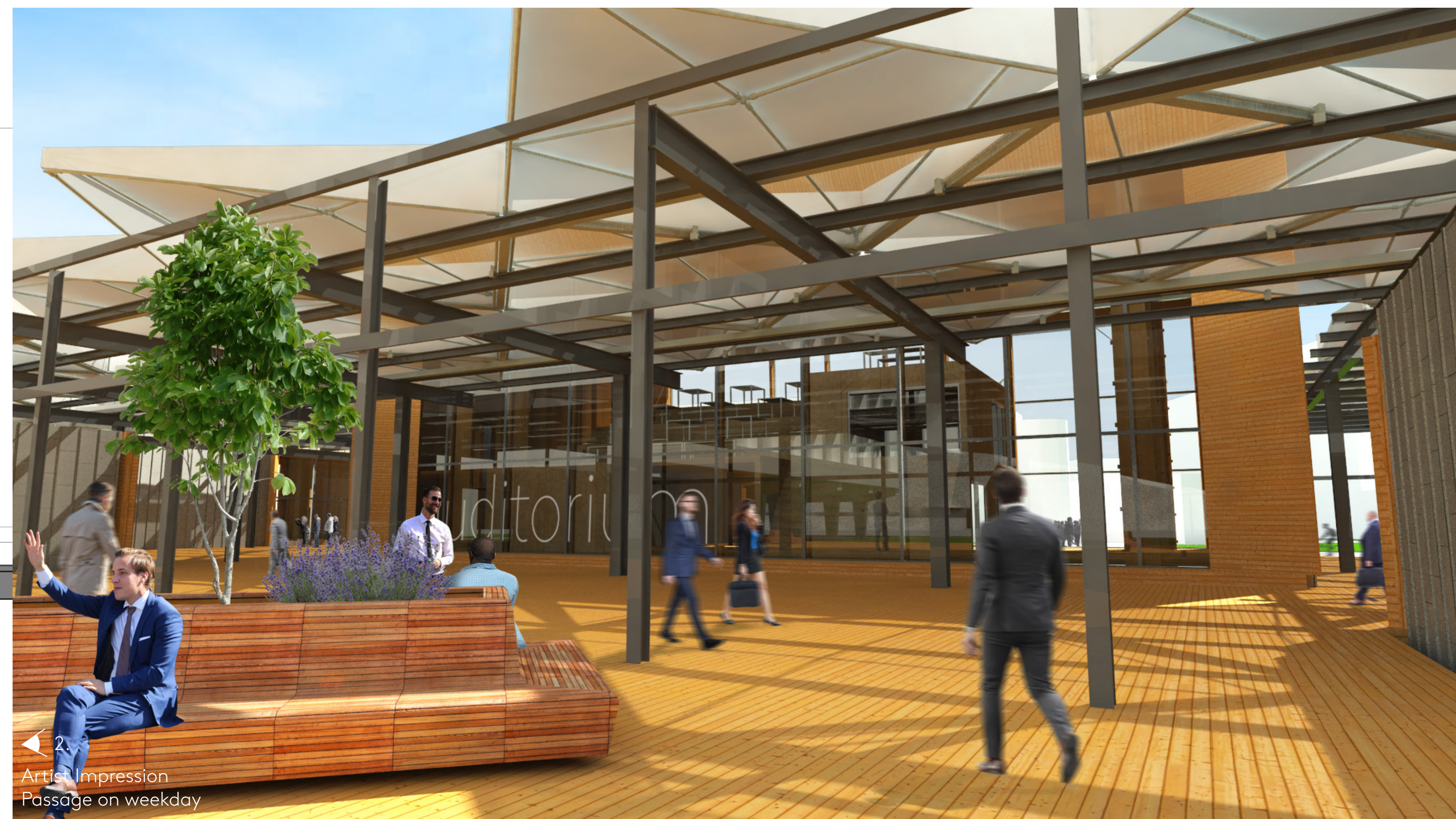
Marinepassage: a new central place at the Marineterrein
Common facilities building and event space



Artist Impression
North facade at dawn



Artist Impression
South facade on late afternoon

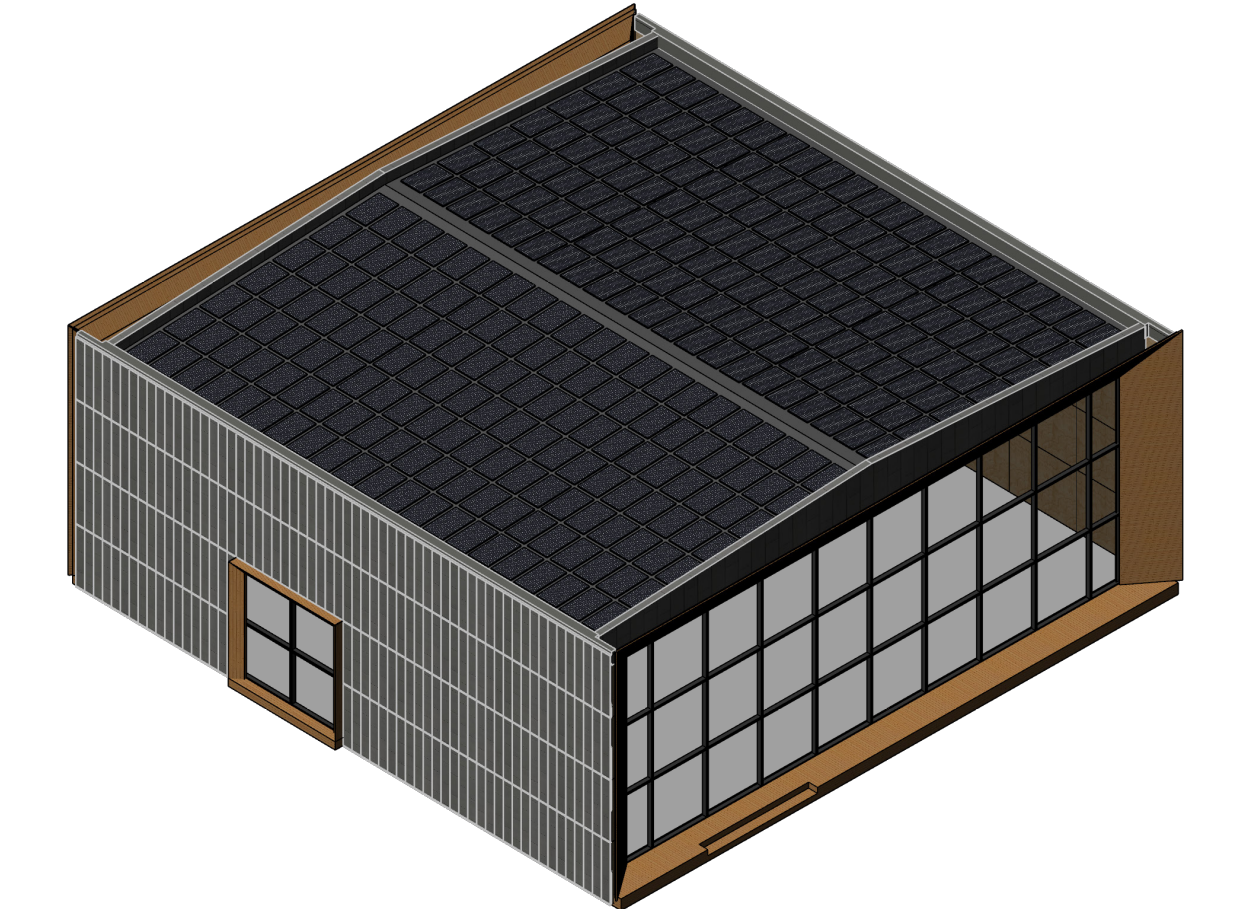


Artist Impression
Passage on weekday

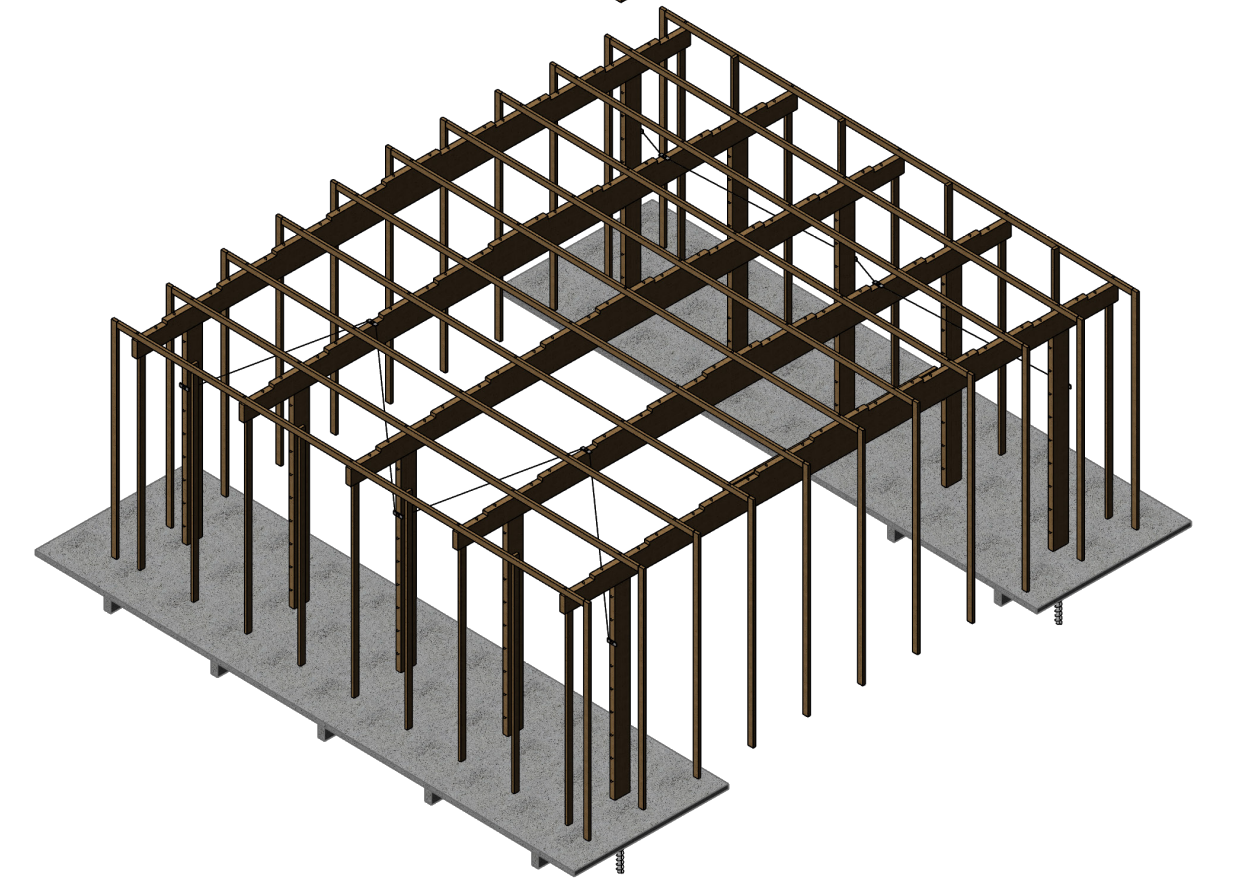


Section 1:250
North-South

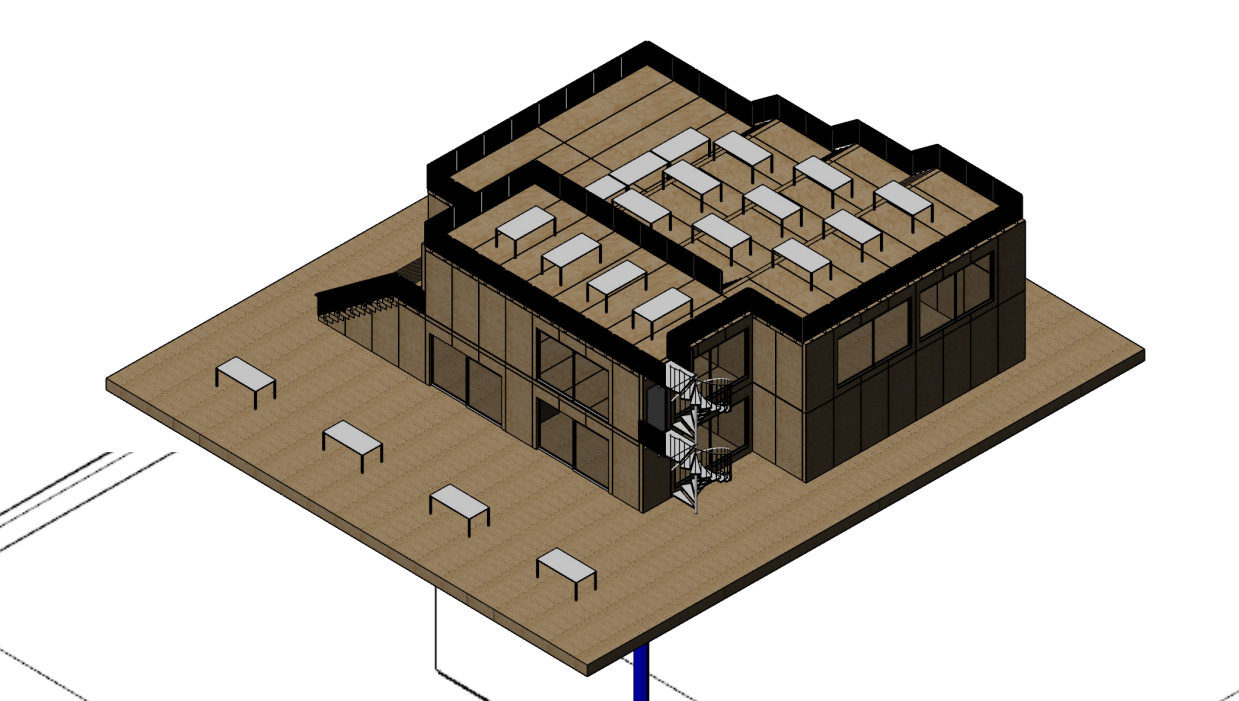
Skin
Design for Standardisation
and Compatibility



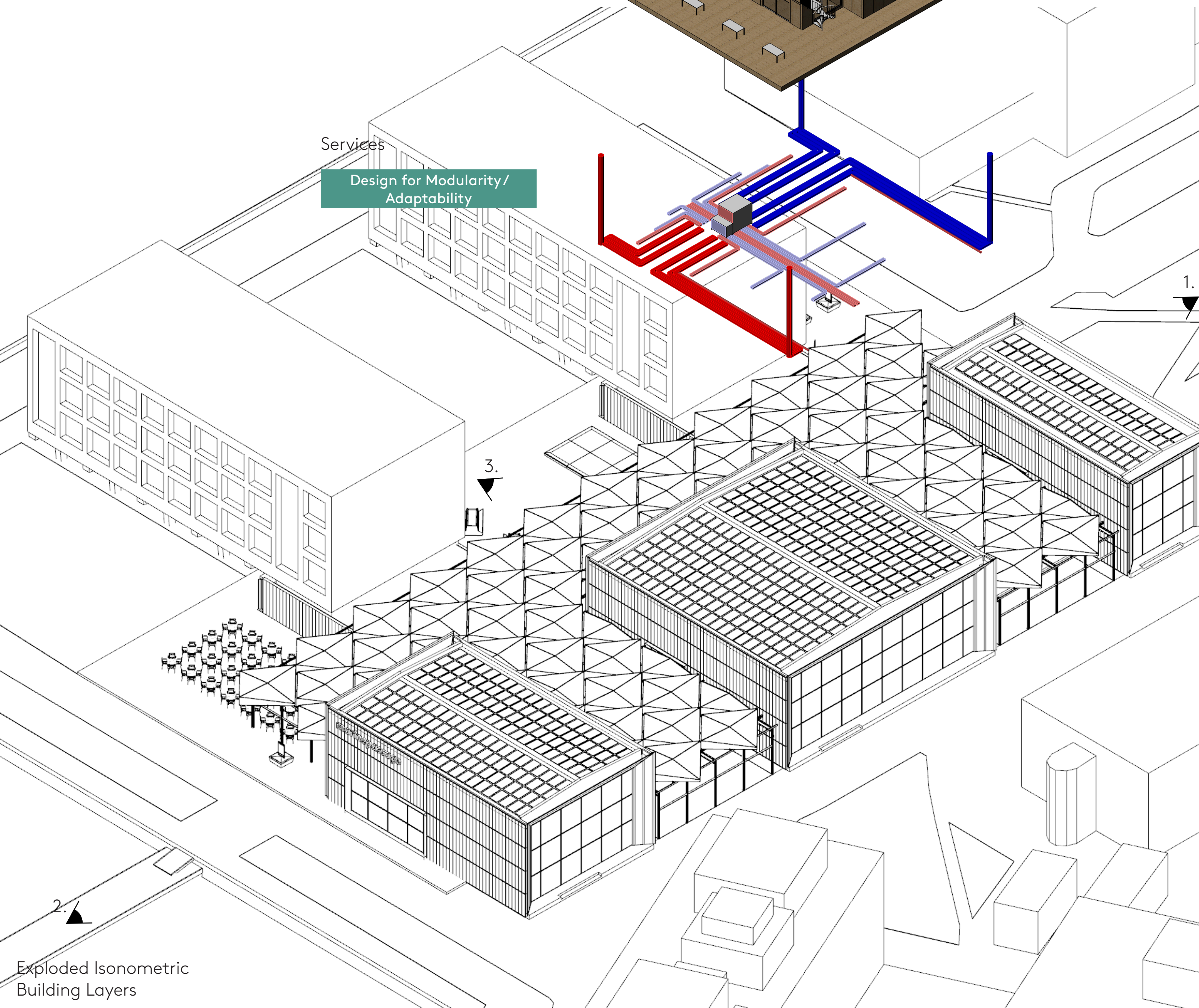
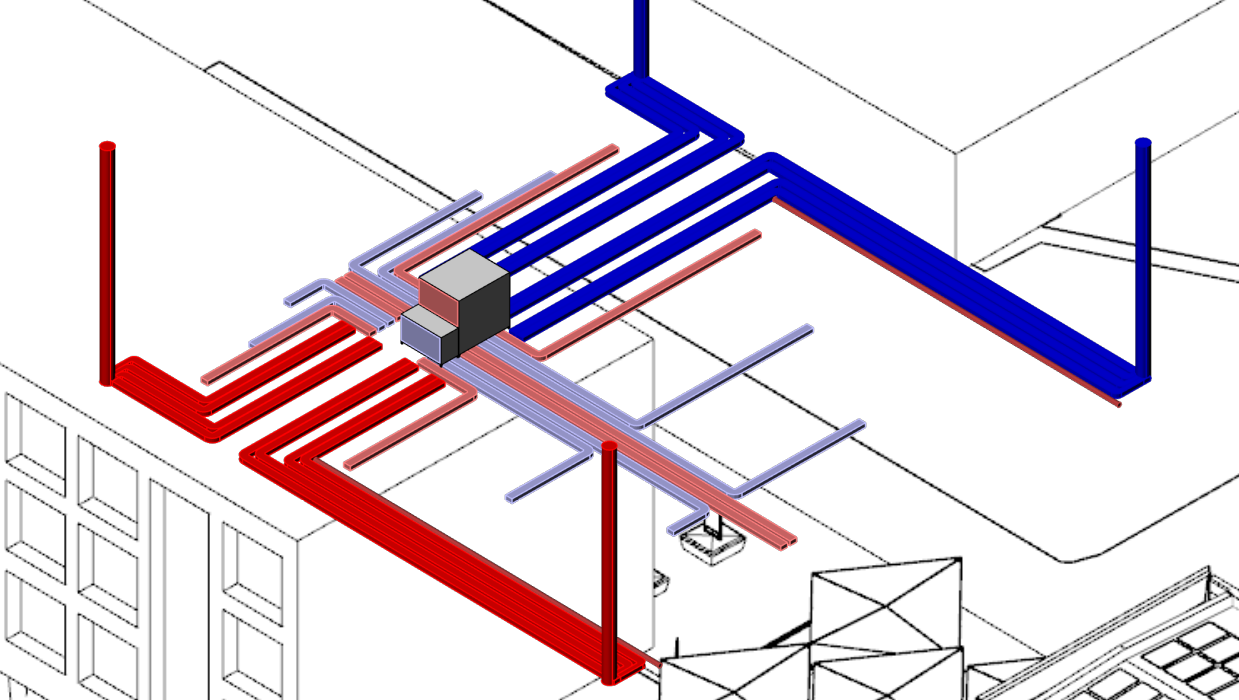
Structure
Materials for Recycling
Infrastructure / Separability



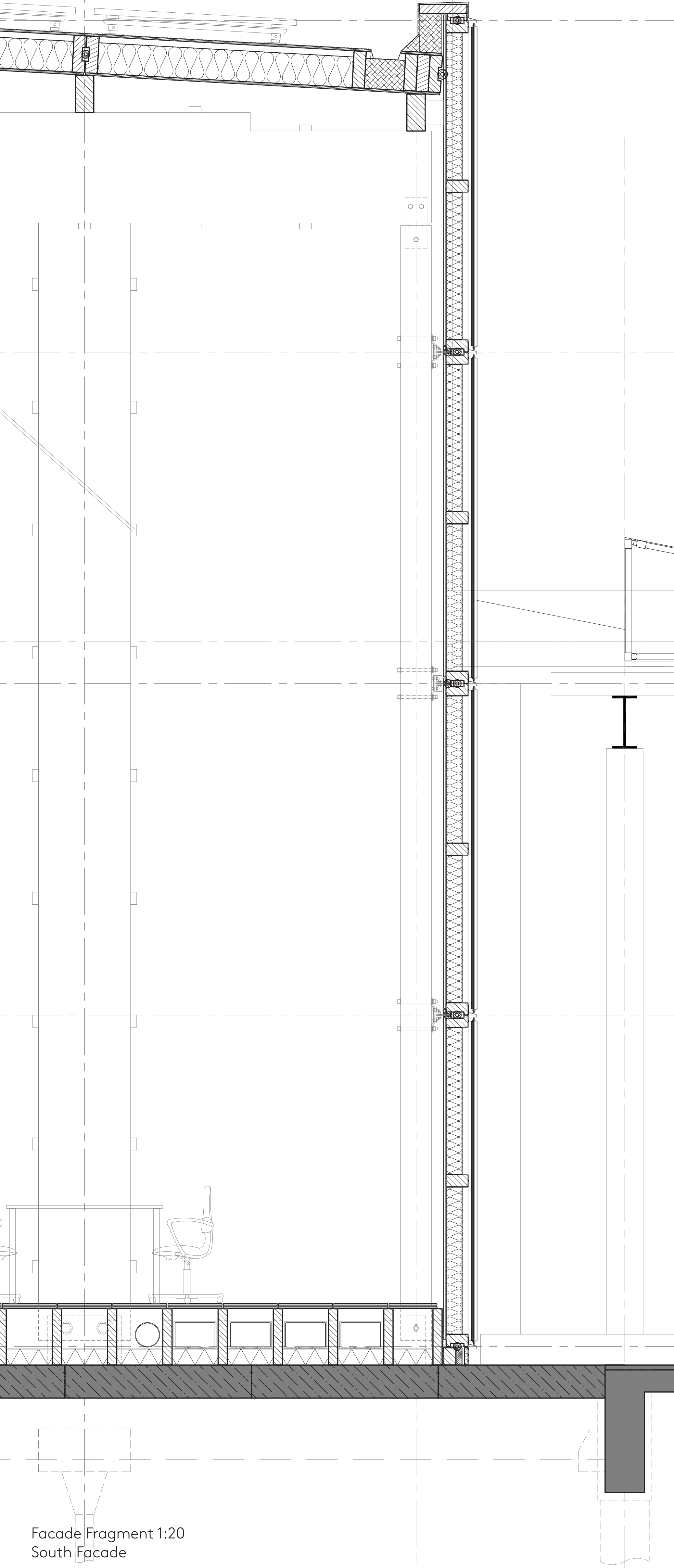
Space Plan
Design for Sharing



Services
Design for Modularity/
Adaptability



Exploded Isometric
Building Layers



Facade Fragment 1:20
South Facade