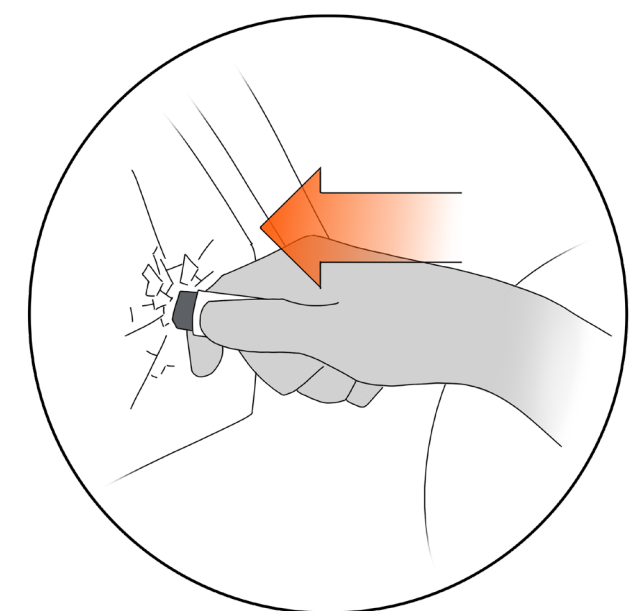
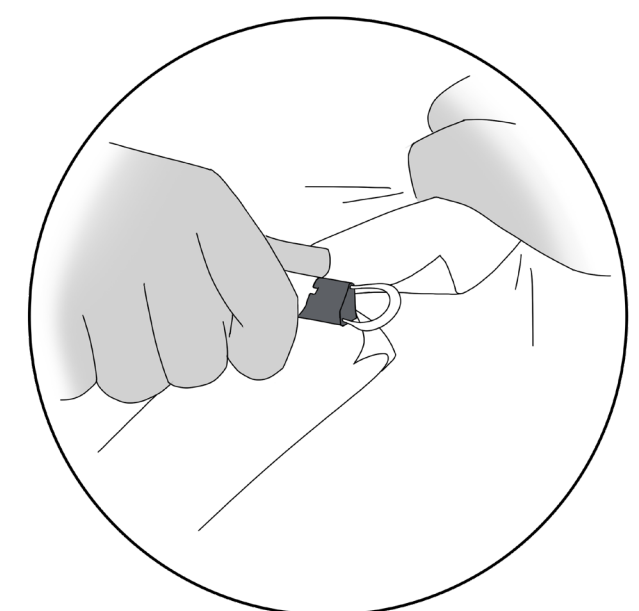


LIFEHAMMER®

SBAS

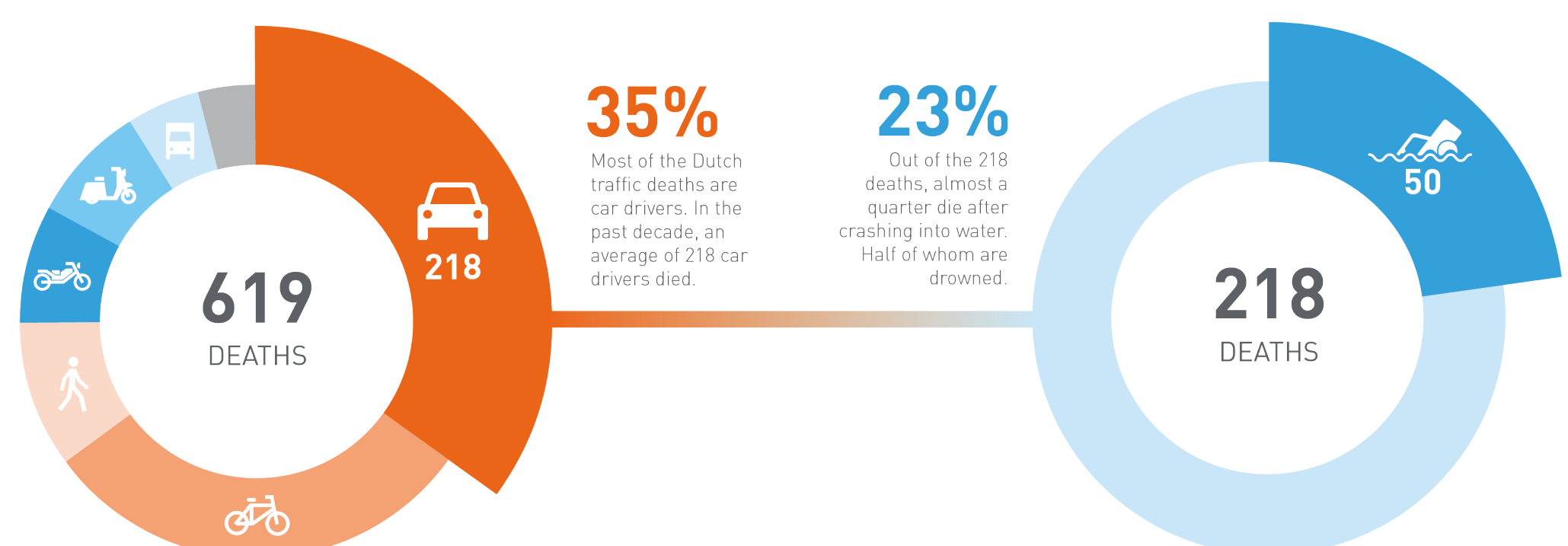
SEAT BELT ATTACHMENT SYSTEM



Each year, about 50 people in the Netherlands die after becoming trapped underwater in their cars. It comes as no surprise that most Dutch car dealers supply their customers with an emergency hammer. These are hammers designed to break car glass, and often come with a seat belt cutter as well. Unfortunately, the current attachment systems come with problems; some are so severe that some users even throw it in the trunk, along with the hammer. To counteract the problems, a new “hammer”, or SBAS has been designed. Thanks to a spring mechanism, this compact hammer can break car glass with the same ease as a full-sized emergency hammer. The SBAS comes with a sheath which is attached to the seat belt receiver, which is a universally present location, and is also intuitive to find. Due to the frequent use of the seat belt, users are able to find the SBAS without even looking.

TRAFFIC DEATHS

ANNUAL AVG. 2010 - 2017



David Park
The Lifehammer Solution
20-06-2019
Integrated Product Design

Committee Ir. I. A. Ruiter
J. Kuiper
H. Van Rijn
Company Lifehammer

**TU Delft**