

# Design

## **Inclusive Interiorities**

A focus on women; towards more inclusive designs

## Design

1. Managerial concept	5
2. Design	
a. Urban level	12
b. Building level	31
c. Unit level	76
3. References	103



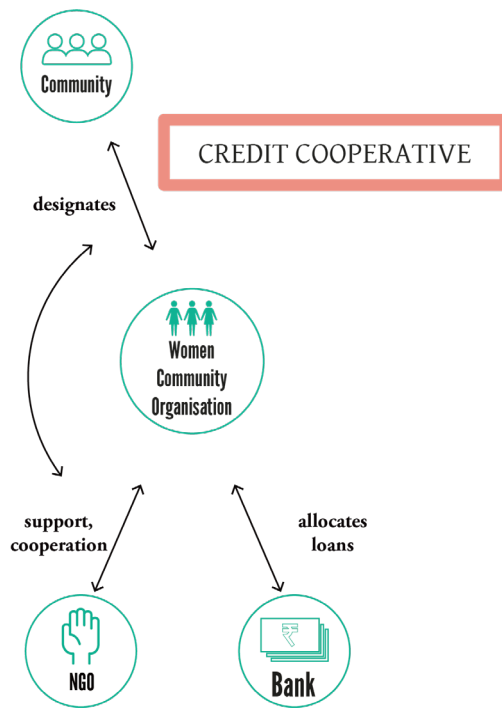
## **1. Managerial concept**

**“An ability to control economic resources lends power to these women and provides them with credibility in negotiations and general decision-making in the house”**

**“People who provide support to each other [...] individuals join together to take actions towards overcoming obstacles and attaining social change, individual, and/or collective empowerment can result”<sup>1</sup>**



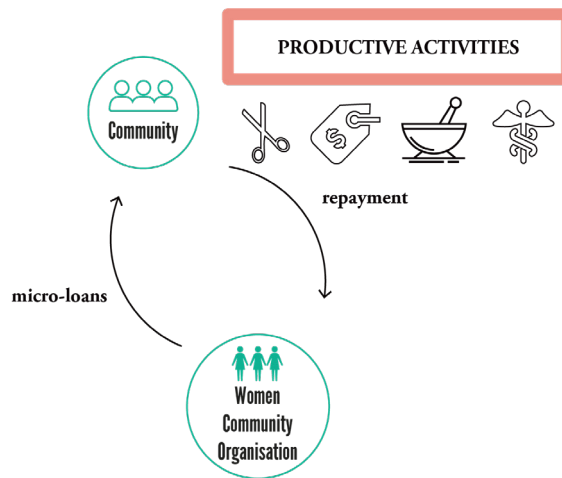
1. Helped by the NGO, the community chooses 10+ representative members of the Women Community Organization, also called Self-Help Group.  
The WCO and NGO discuss and evaluate the needs formulated by the community members: participatory approach



2.

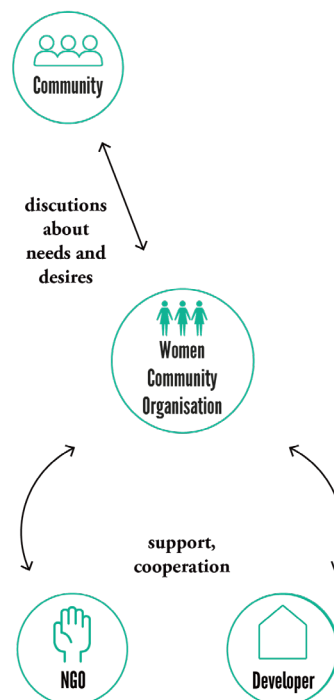
This organization would act as a credit cooperative, being more reliable as a group, and supported by the NGO. The bank would allocate money, which would be distributed by the Community Organization to the individuals, under micro loans.





3.

Which would be used for productive activities and setting up businesses which could be led by women, in order to become financially independent and to provide a 2nd income to the household. These micro loans allow for quick repayments, as activities or needs might evolve quickly.



4.

Cooperation and discussions take place with the developer, in order to take into consideration the needs of the inhabitants.

Involving the users in the design process will result in a sensitive design, in line with the desires of the inhabitants, which will create a sense of ownership and enhance commitment towards the built environment.

The main goal is to integrate women in public life as both actors and decision makers.



5.

The WCO stands as an interface with institutions, while receiving the support of the NGO (skills training, rights' education...).

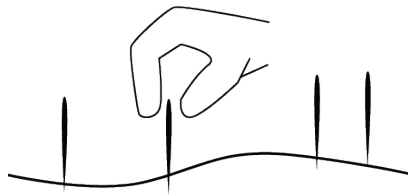
It provides a reliable core, a support network outside the families

The WCO becomes a platform for the community to share:

- responsibilities
- ideas
- problems
- access to monetary funds/ economic pressure

## **2. Design**

### Urban level



Adopting an accupunctural approach ensures the persistence of existing resources, networks and social bonds.

The study area is located in Nalasopara, a city 45km north of Mumbai





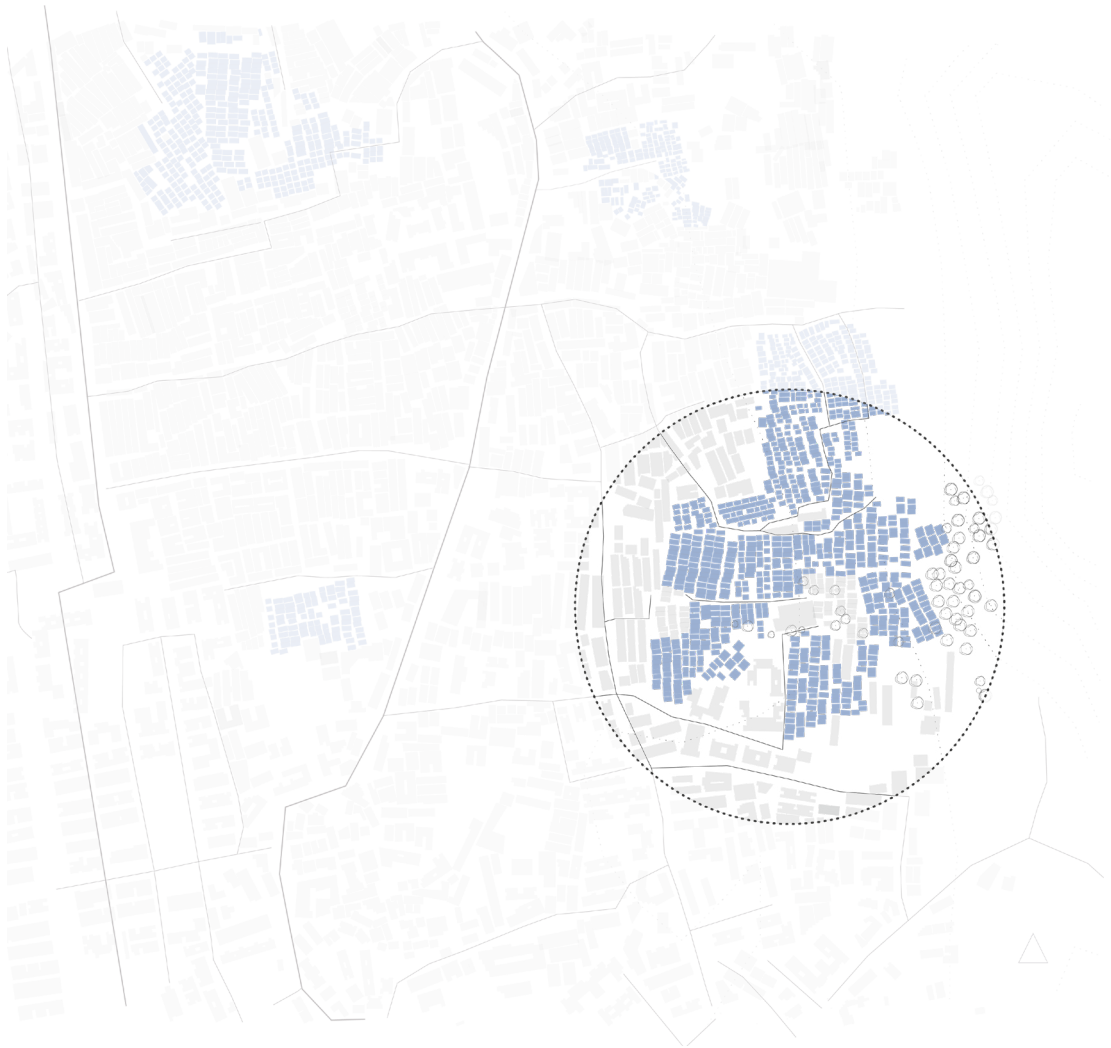
The Baithi Chawls, a recurrent housing typology in Nalasopara

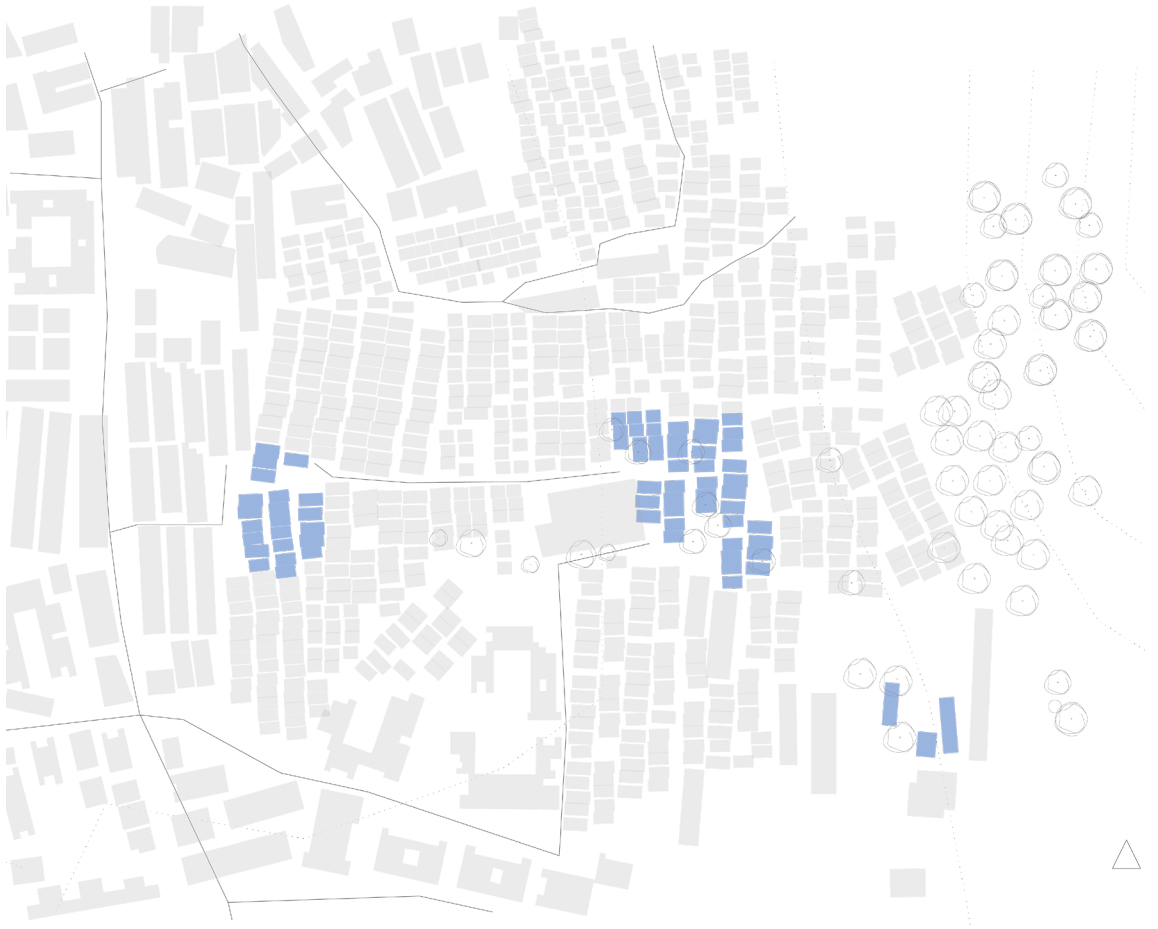






Chosen location for a slum redevelopment alternative





# Improvement of the street network

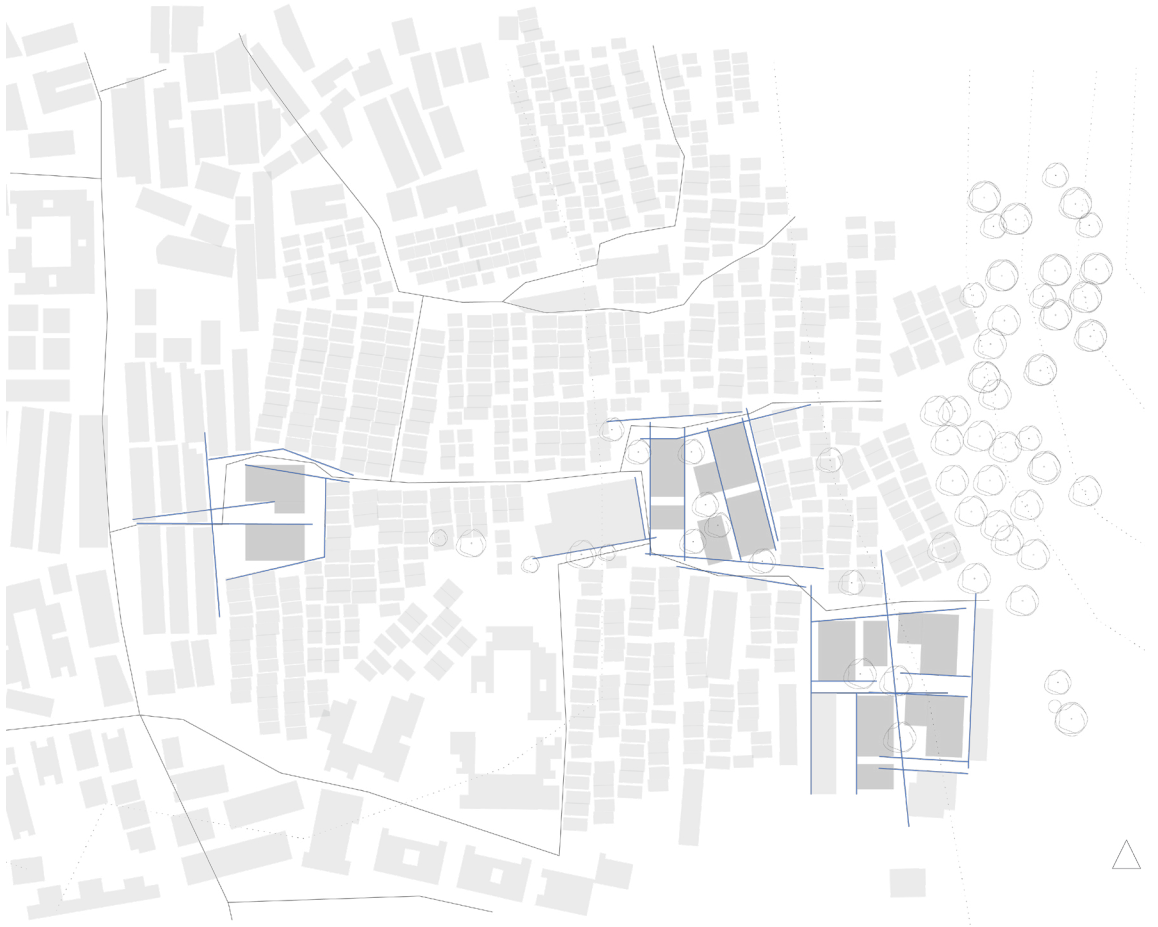


# Hierarchisation of the network



Existing urban axis





Public edges





Semi-public edges

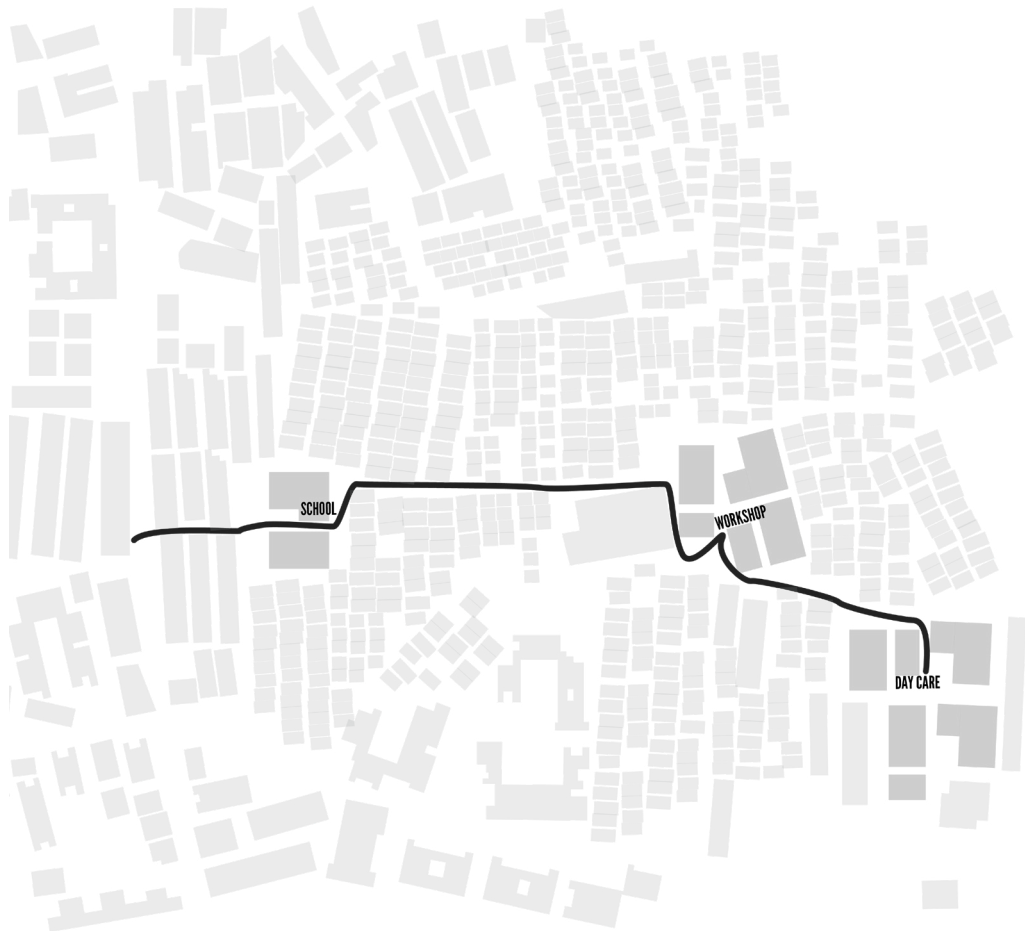


Private lanes



Public squares





Semi-public open spaces



# Communal open spaces



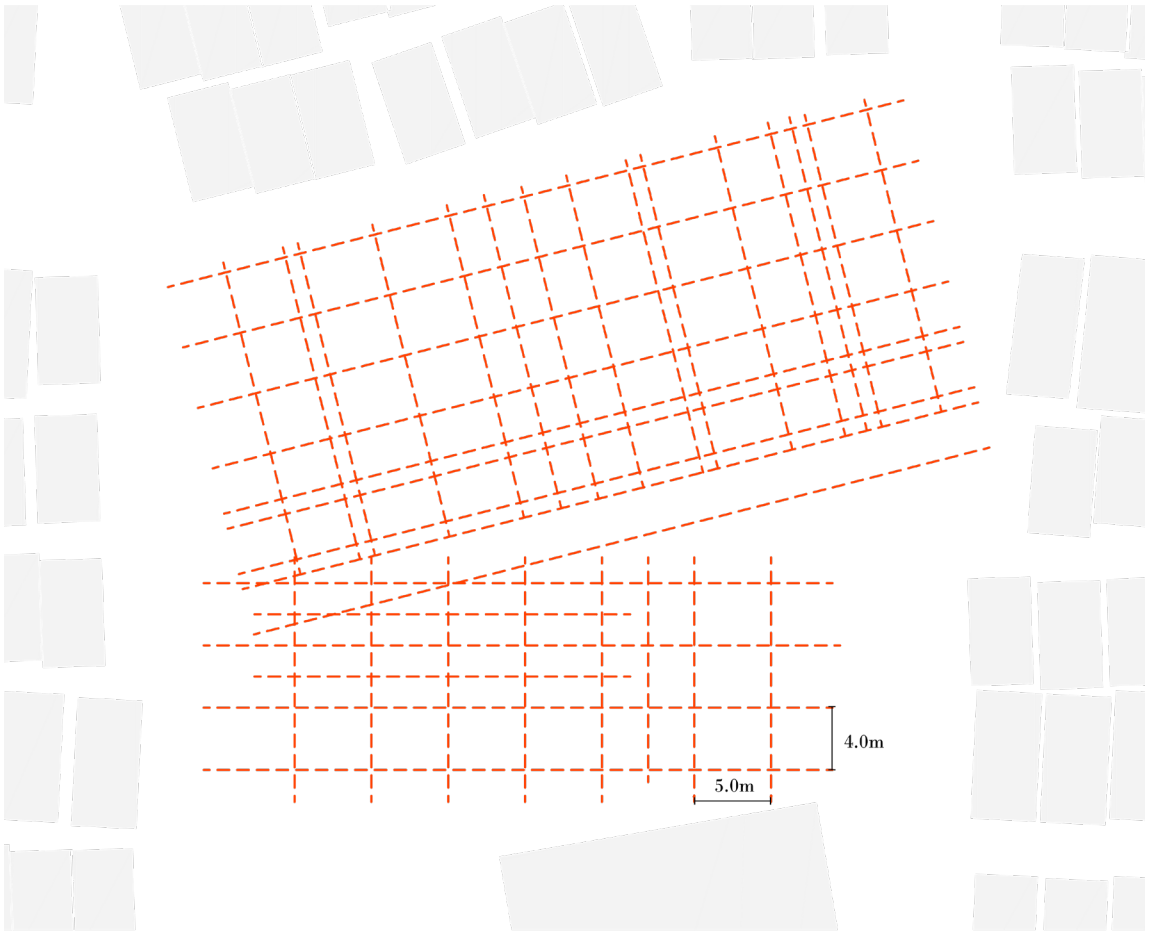
## **2. Design**

### Building level

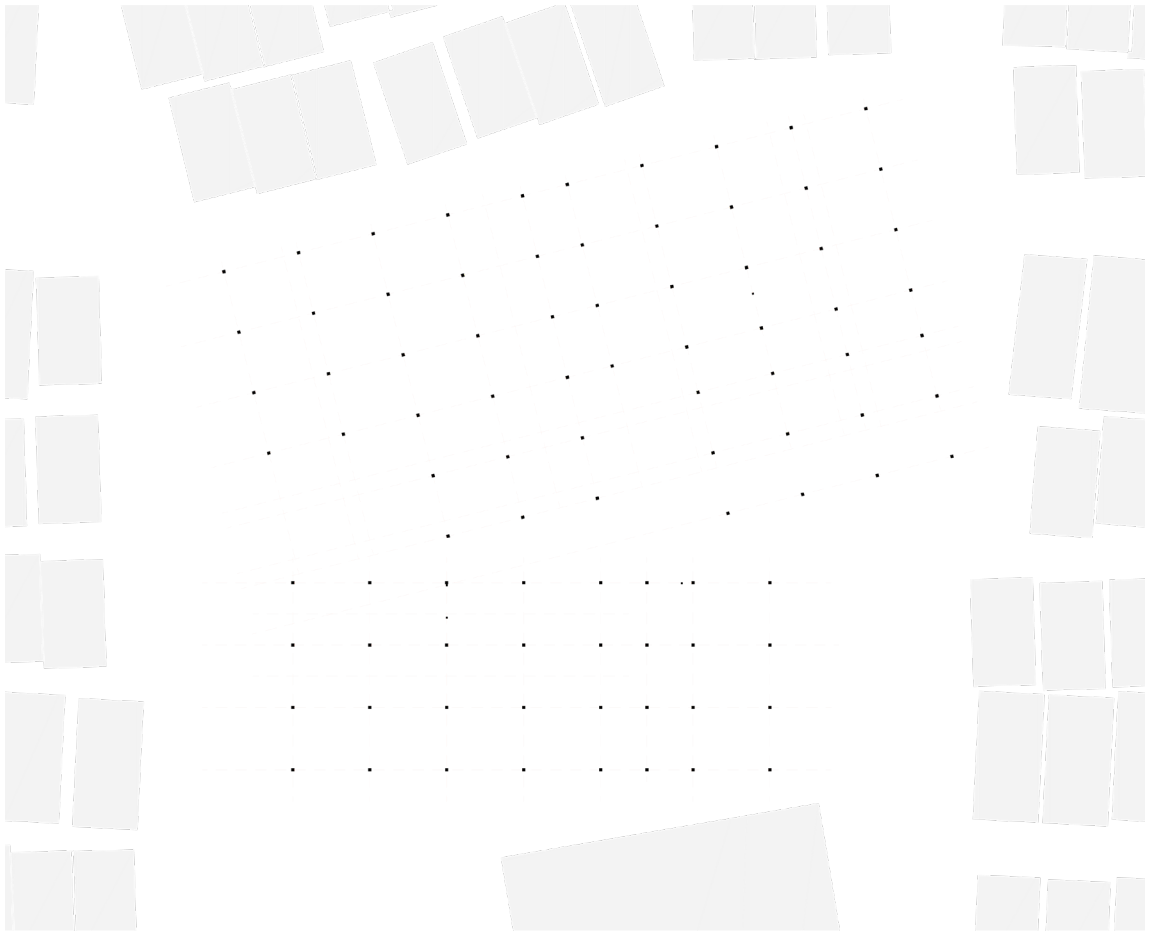




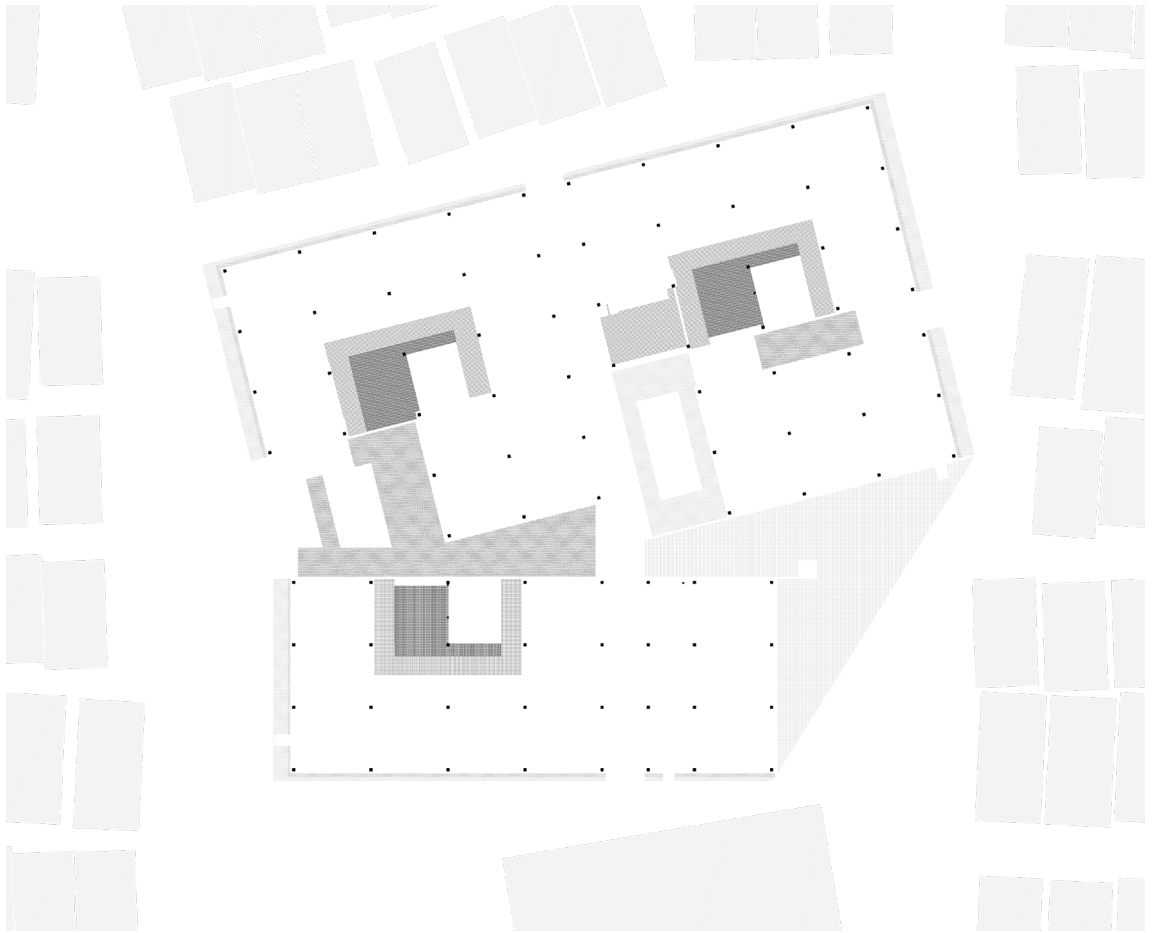
# Structural grid



Columns

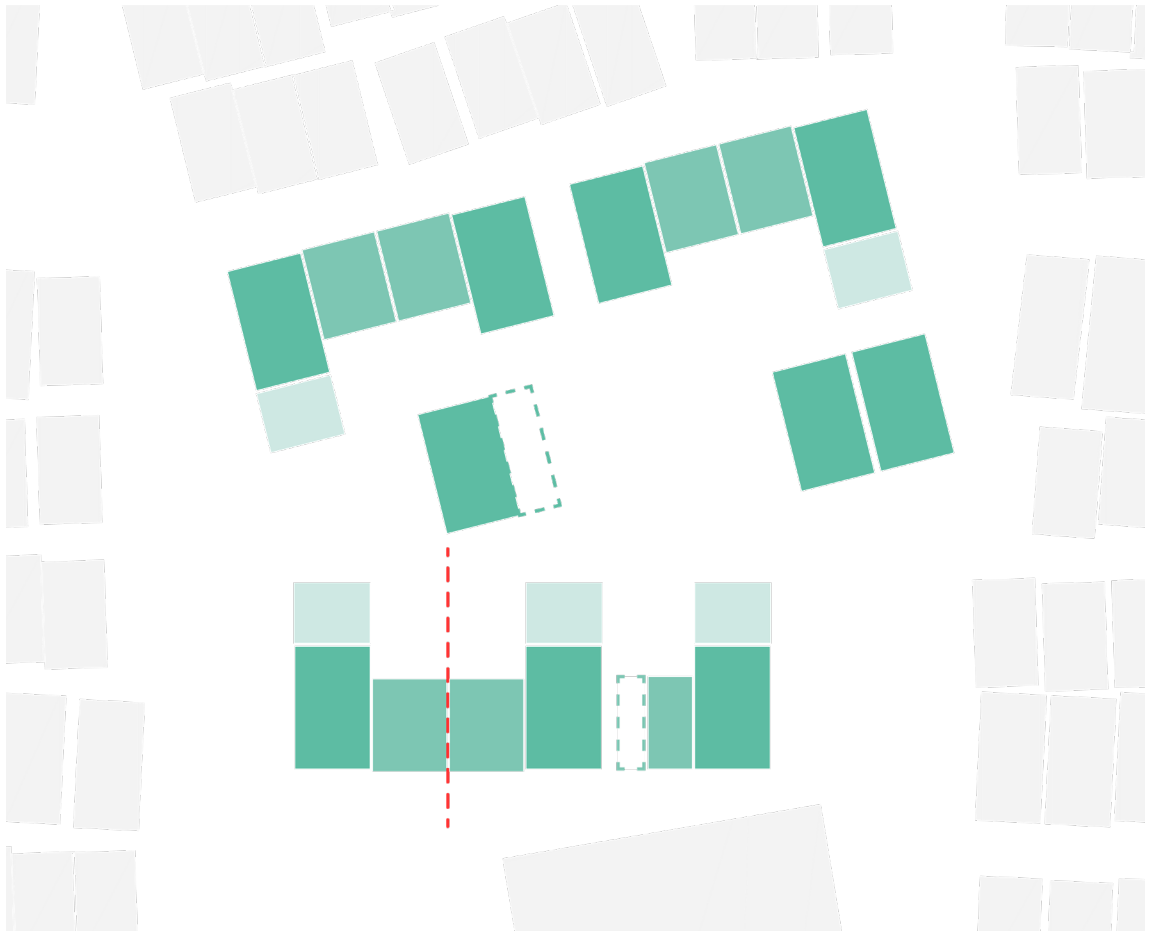


# Thresholds





Dwelling units



# Dwelling typologies per income groups

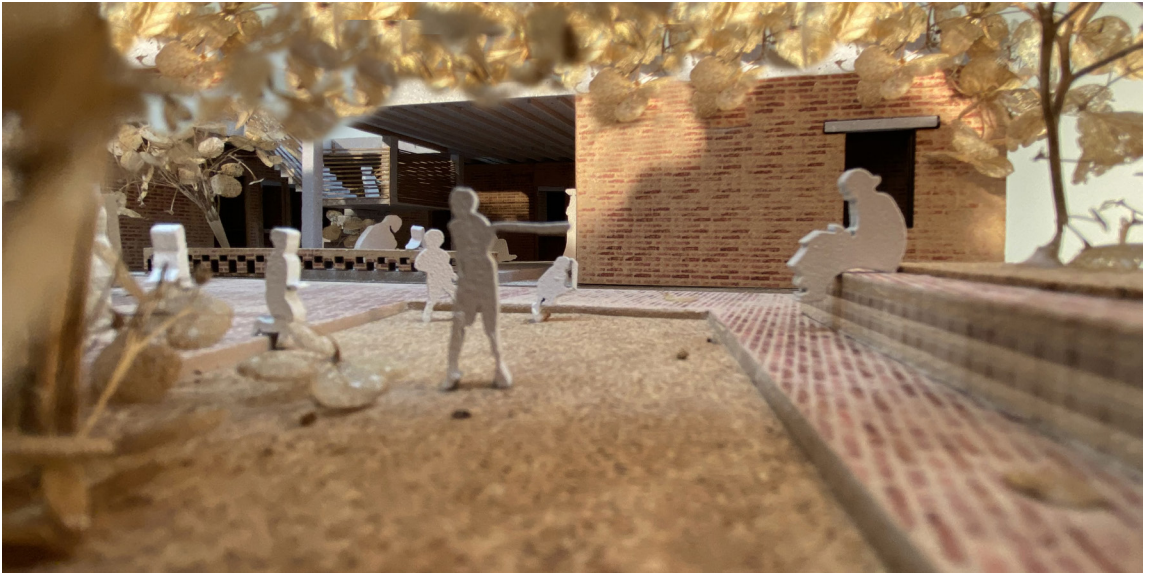


Open spaces









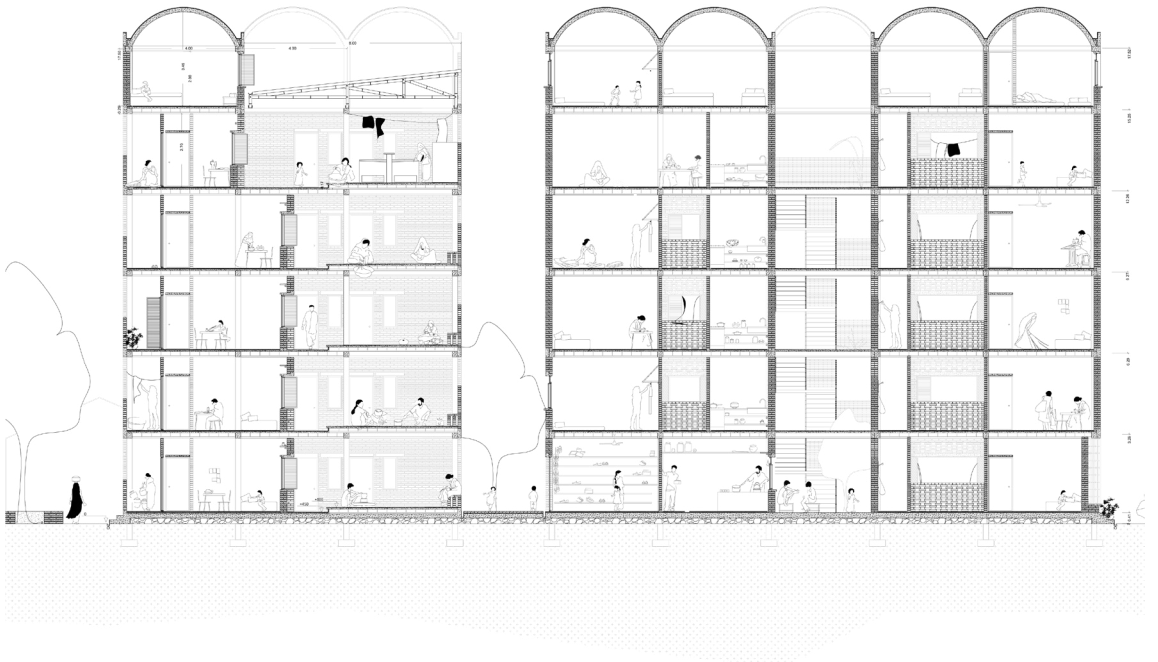
Ground floor plan 1.200



Typical upper floor plan 1.200



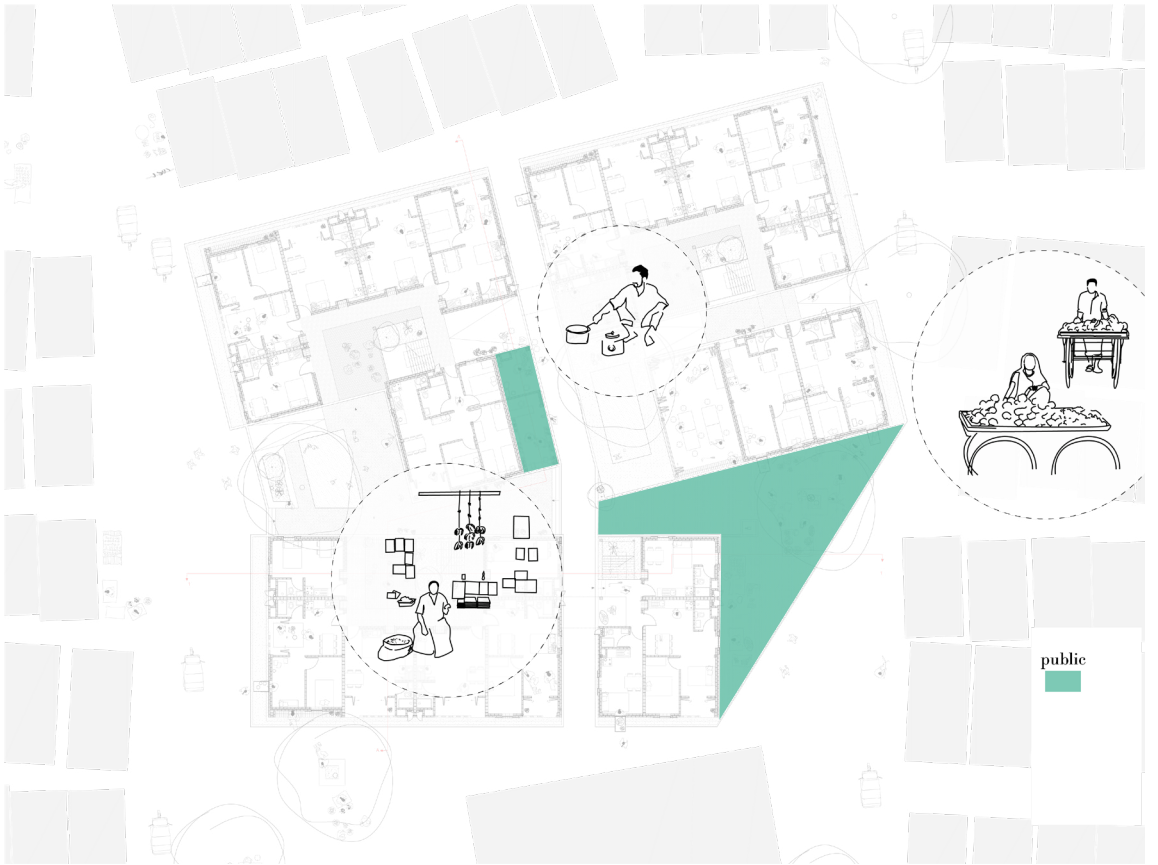
Section A - 1.100



Section 1 - 1.100



Public program





Communal program







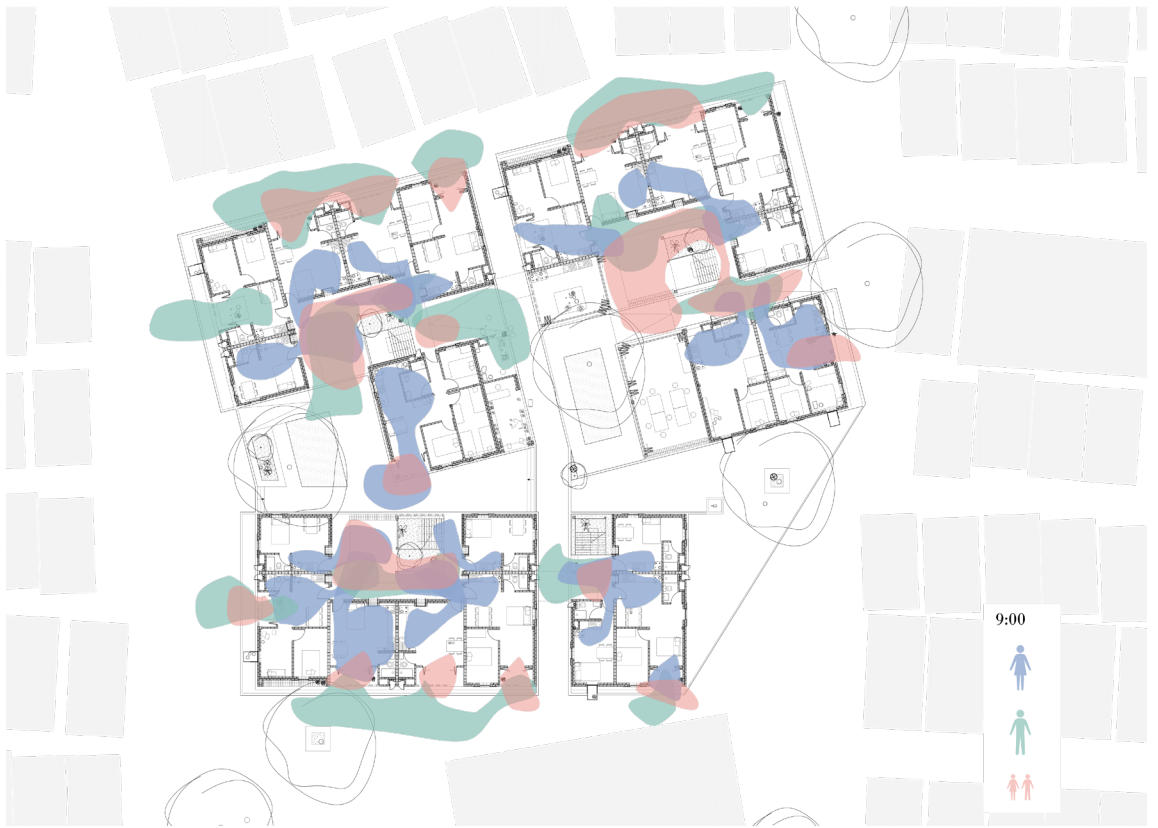
# Home-based program



Gendering of the space throughout the day



# Gendering of the space throughout the day



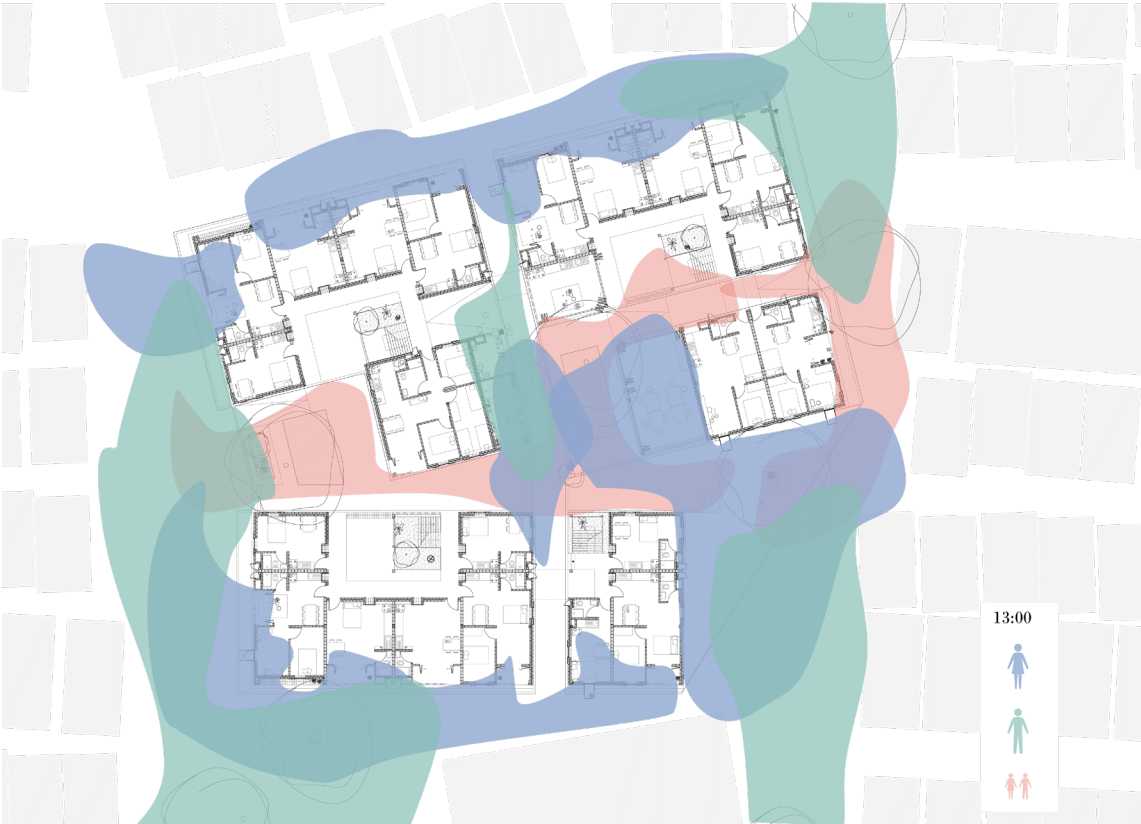
Gendering of the space throughout the day



# Gendering of the space throughout the day



Gendering of the space throughout the day



# Gendering of the space throughout the day





Gendering of the space throughout the day



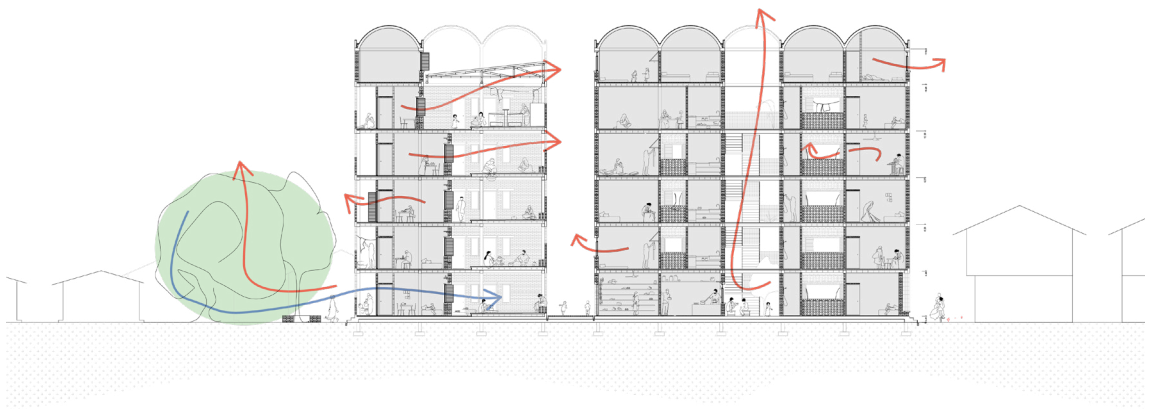
# Water managment



Climate section



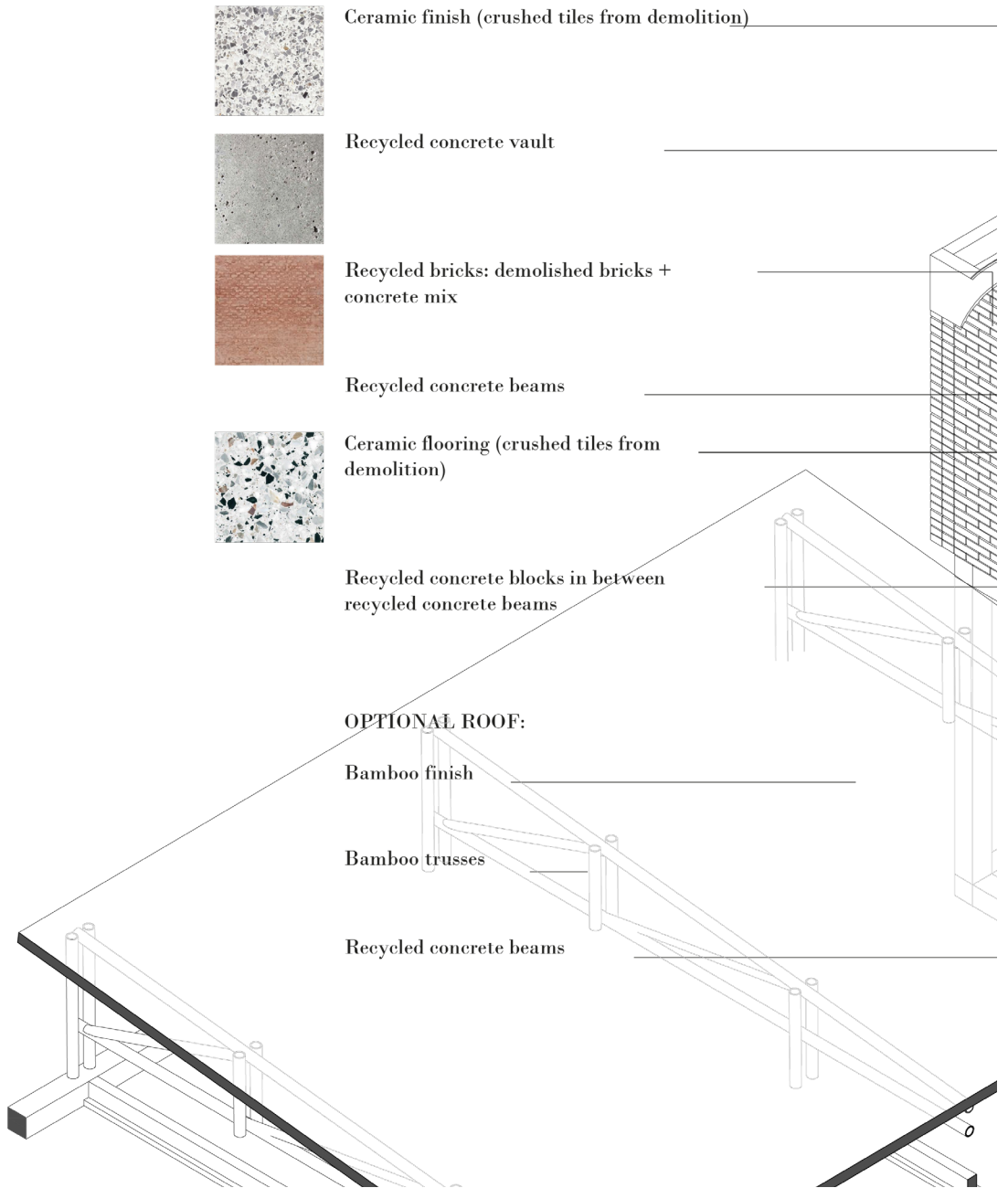
Climate section

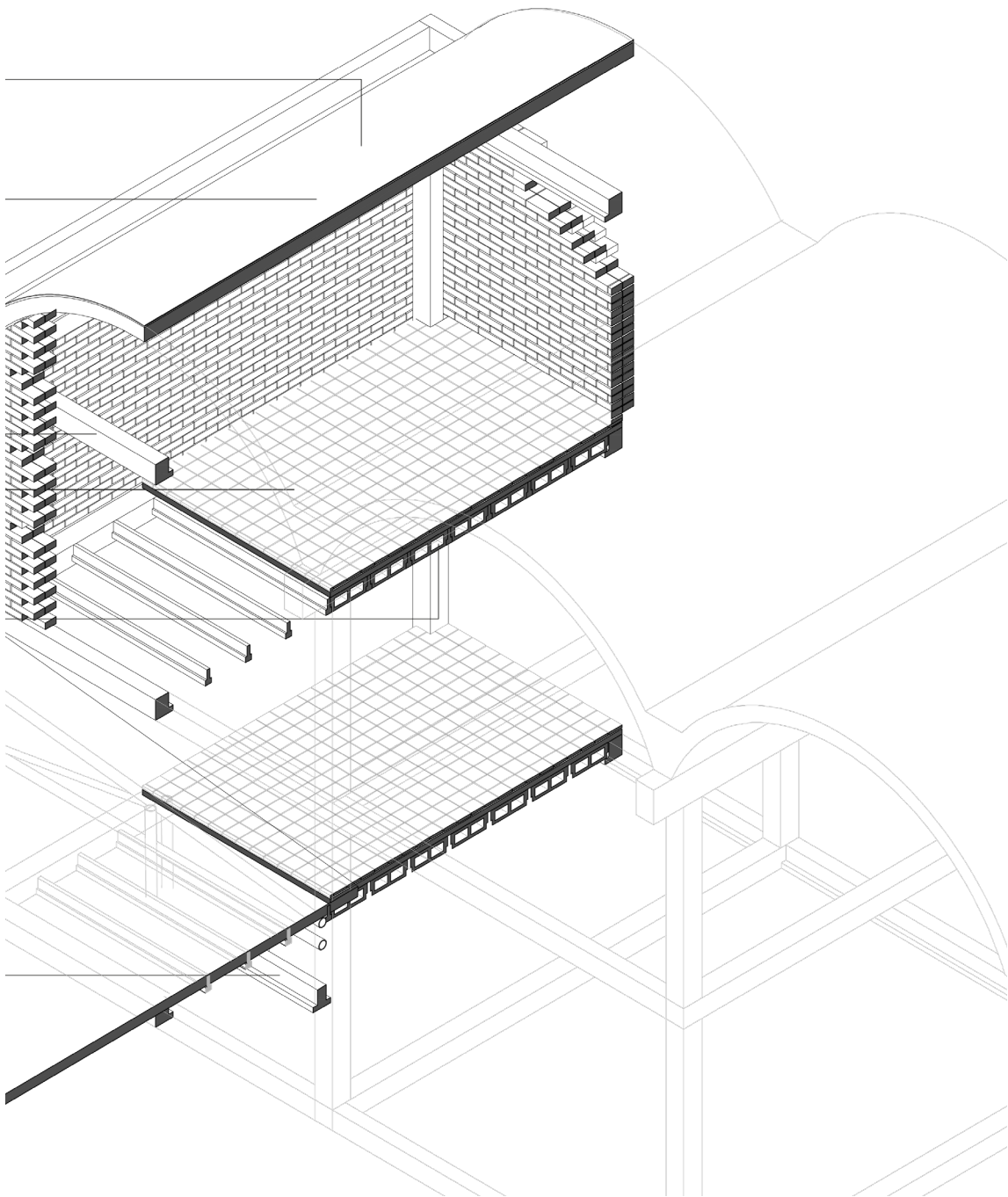


Shade

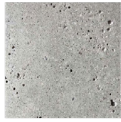


# Structural system

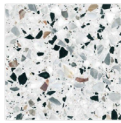




## Floor system



1. (recycled) Concrete columns  
200x200 mm
2. Primary (recycled) concrete beams  
200x200 mm
3. Secondary (recycled) concrete beams  
20x200 mm
4. Flooring (recycled) concrete beams  
150x70 mm
5. (recycled) concrete blocks  
250x400x150 mm
6. Concrete slab  
50mm
7. Ceramic tiles (reused from  
demolished buildings)  
25mm

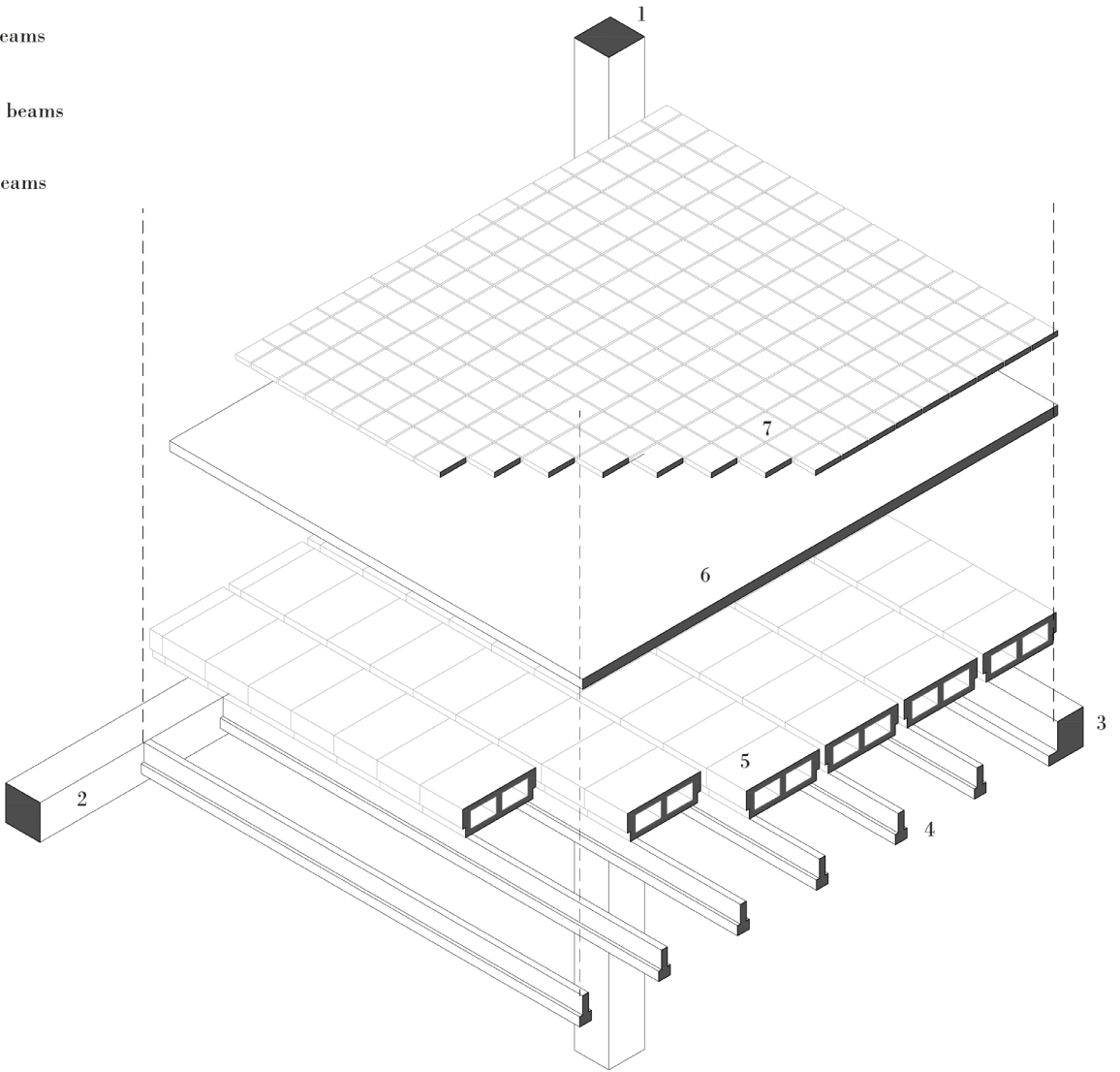




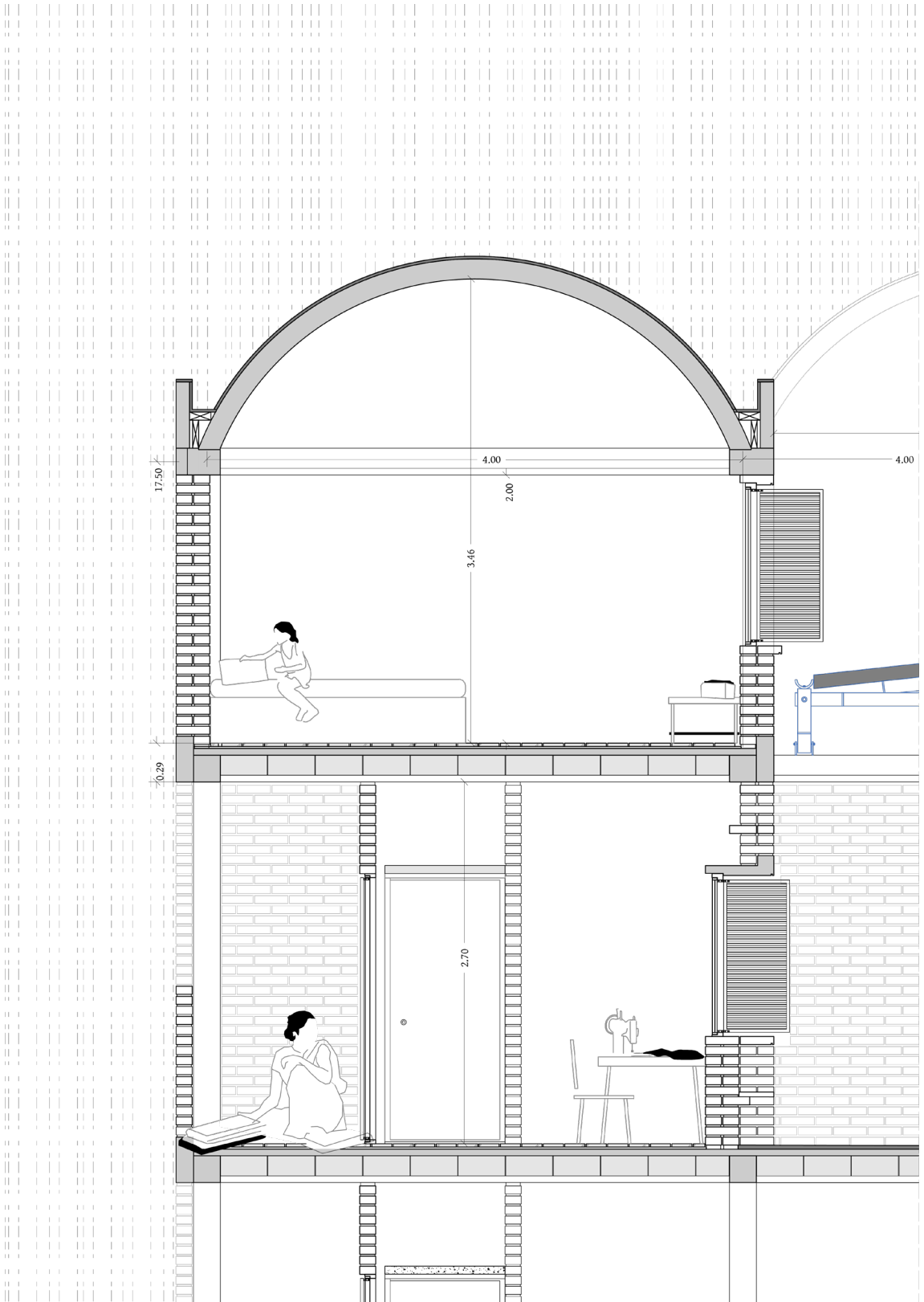
beams

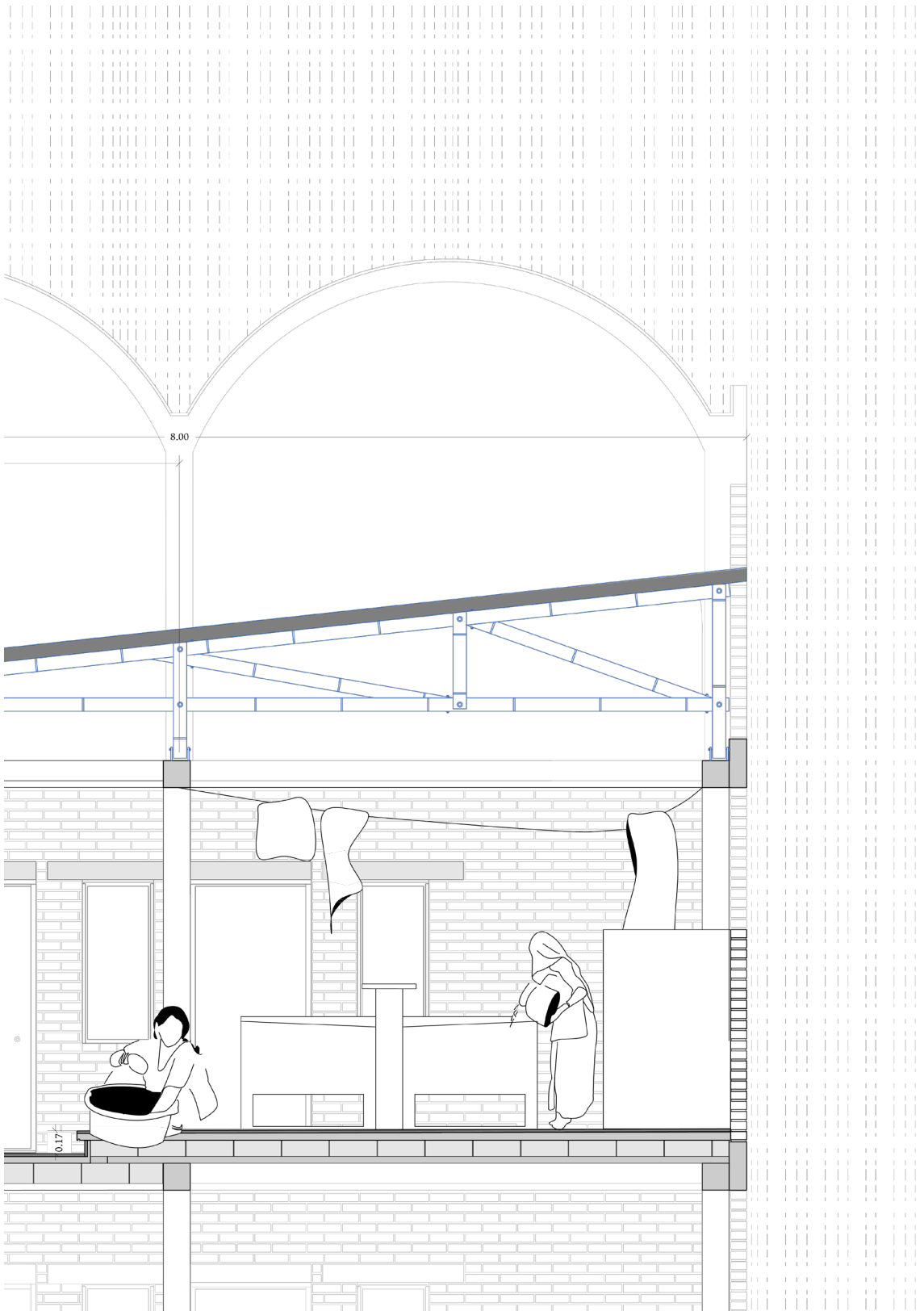
ce beams

beams

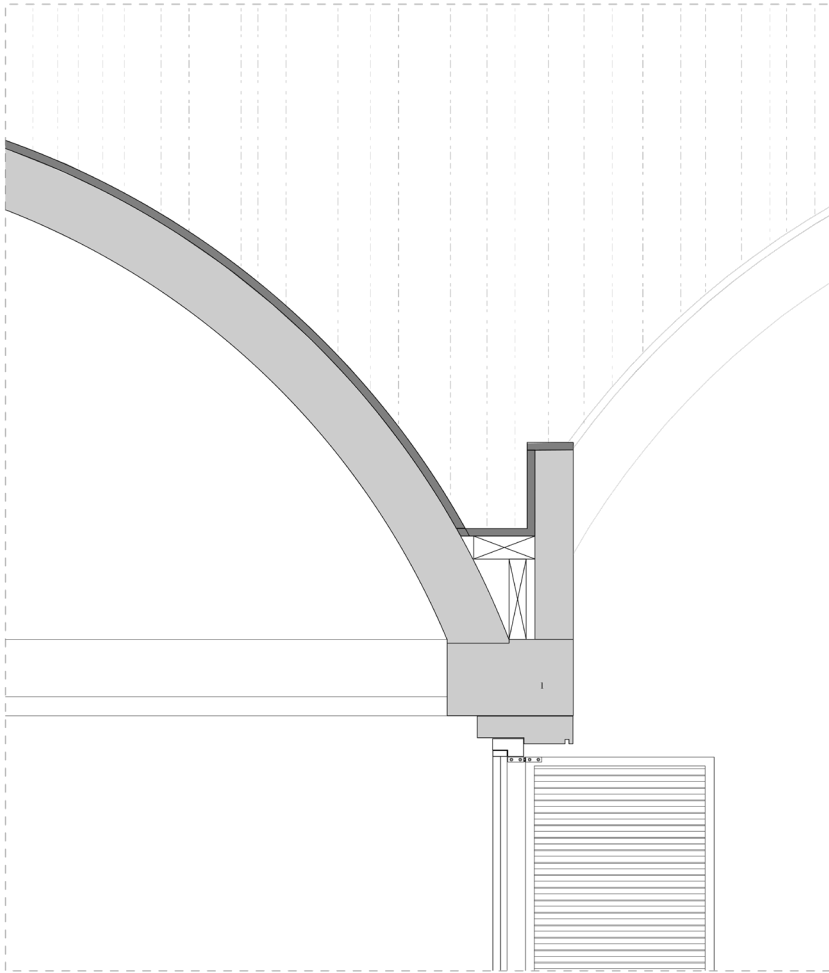


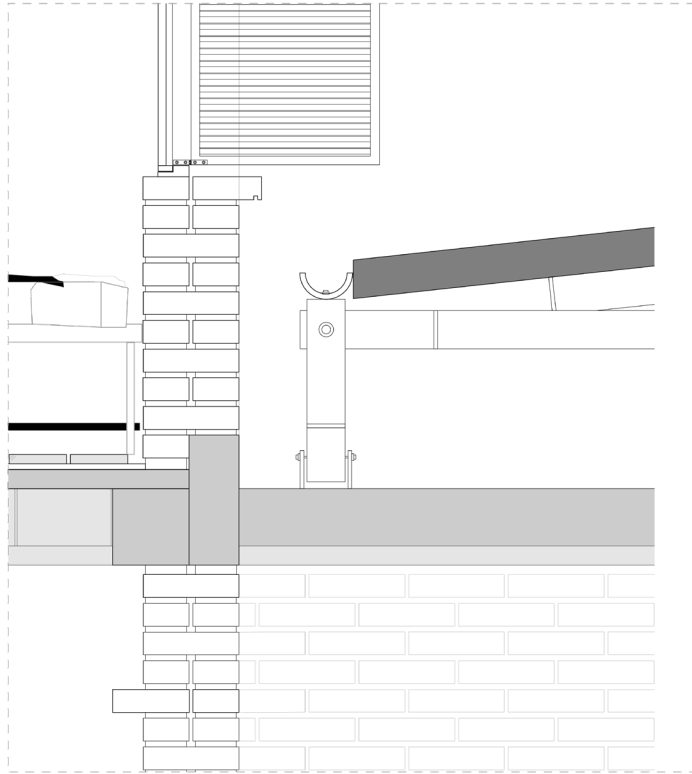
Roof section 1.20



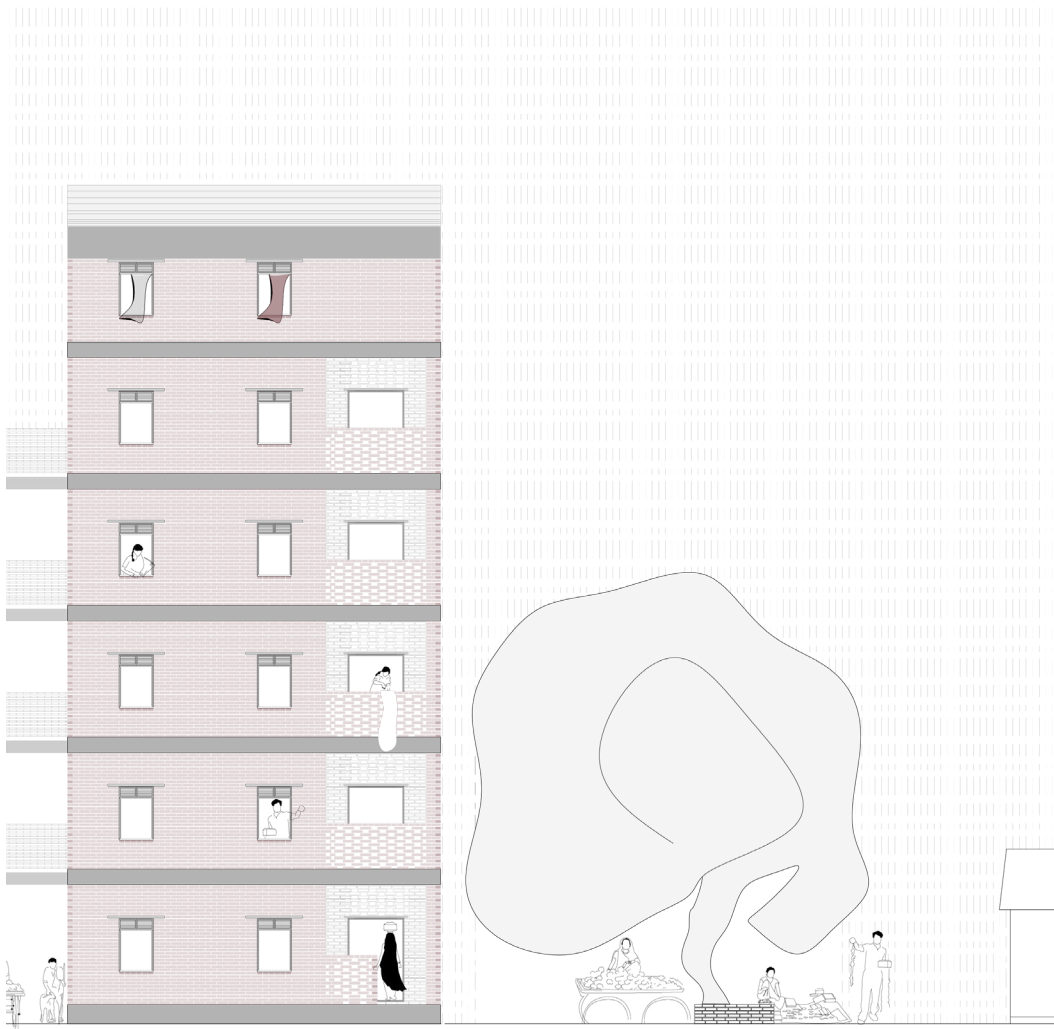


Roof details 1.5















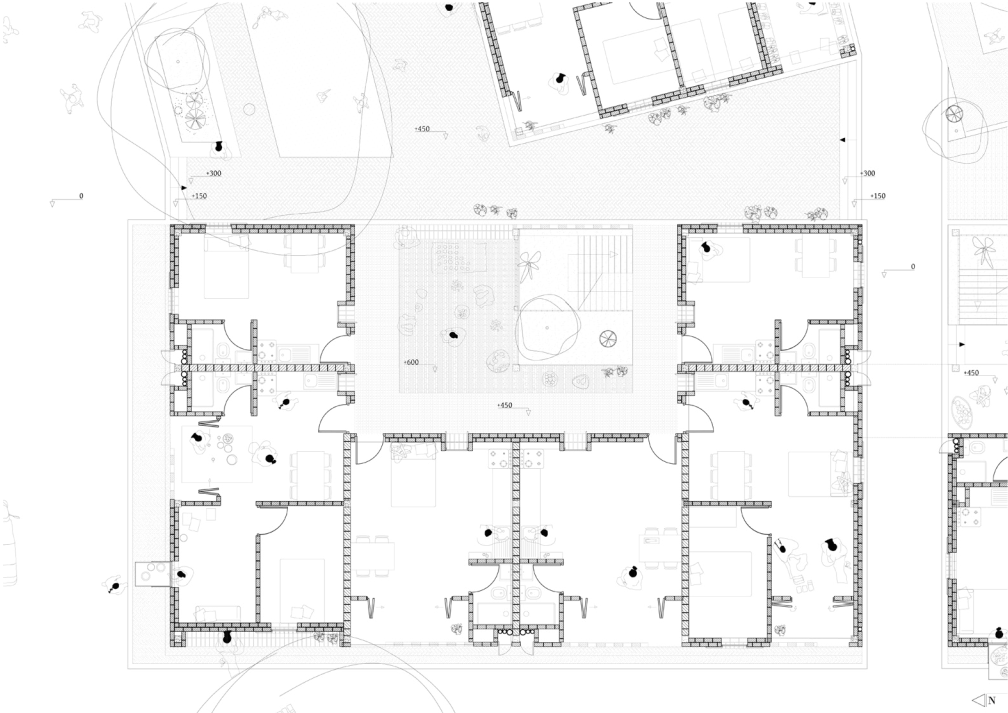




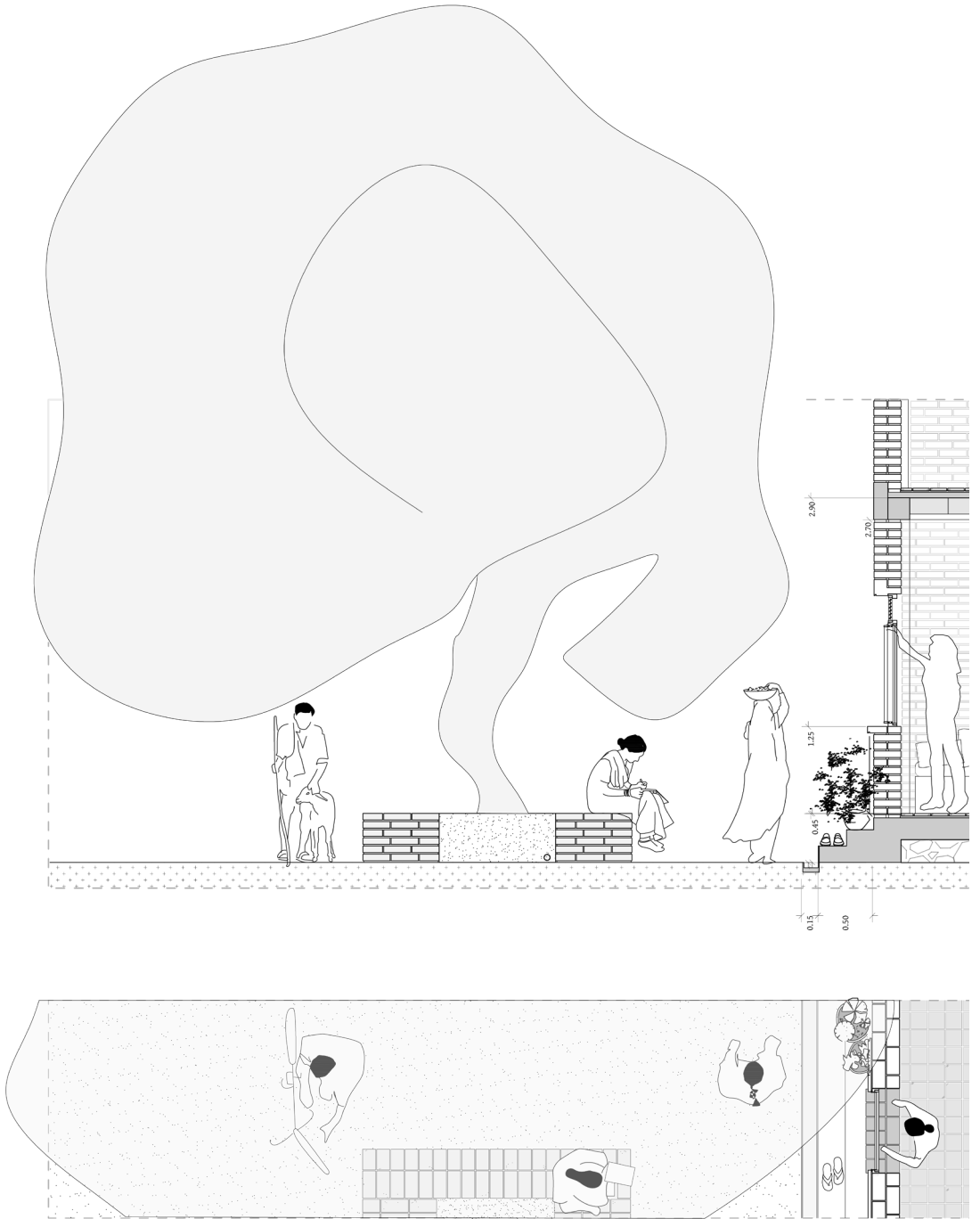
## **2. Design**

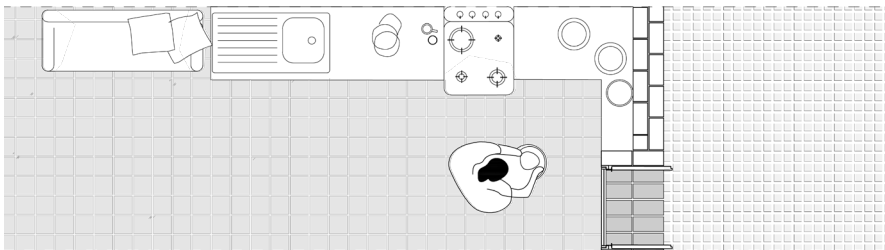
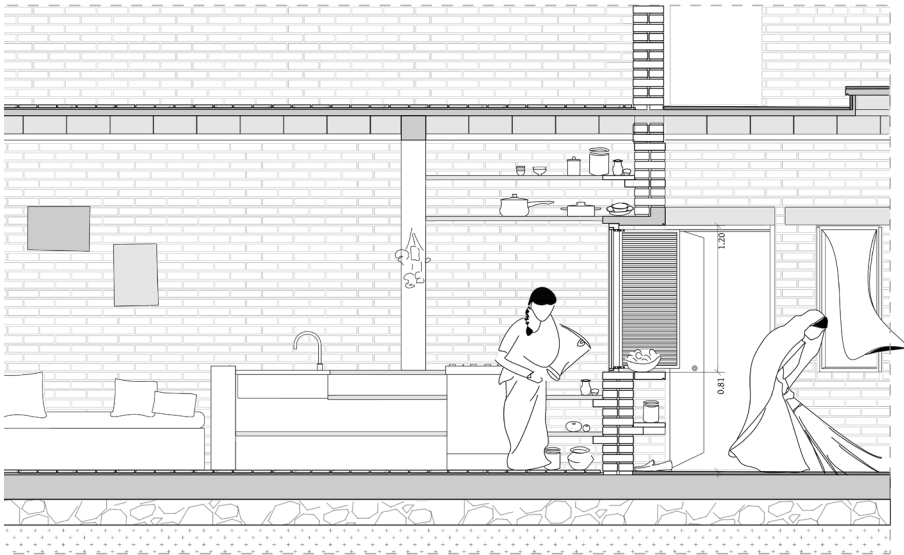
Unit level

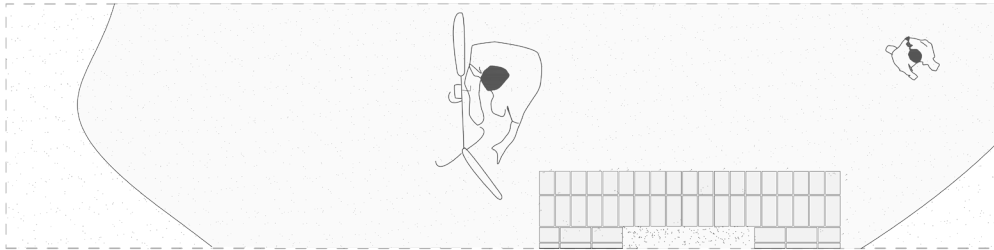
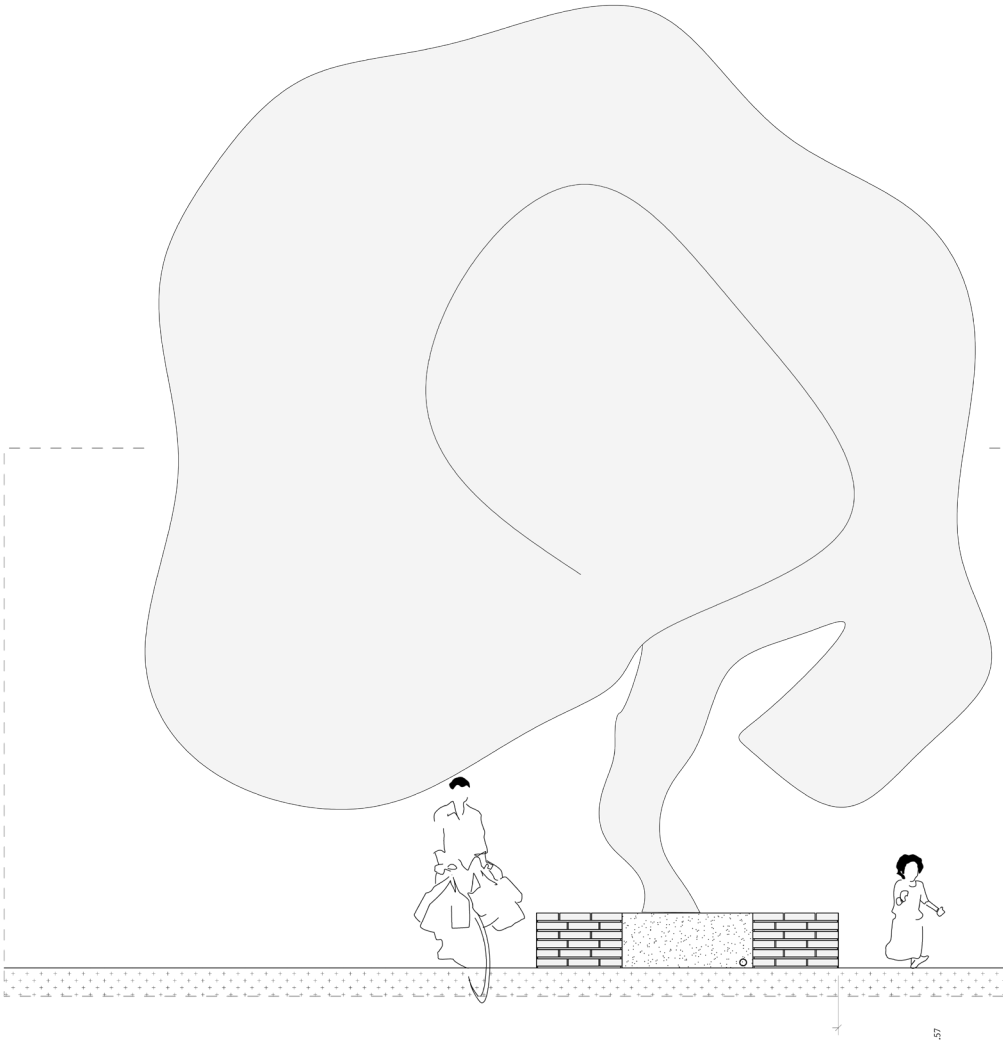
Typical floor plan - 1.100



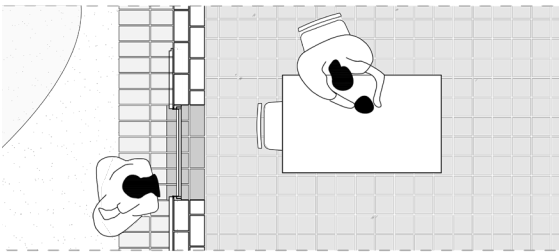
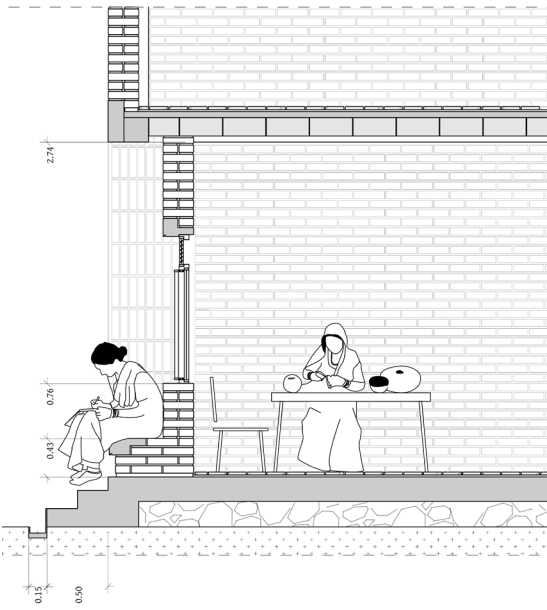
Window details 1.20

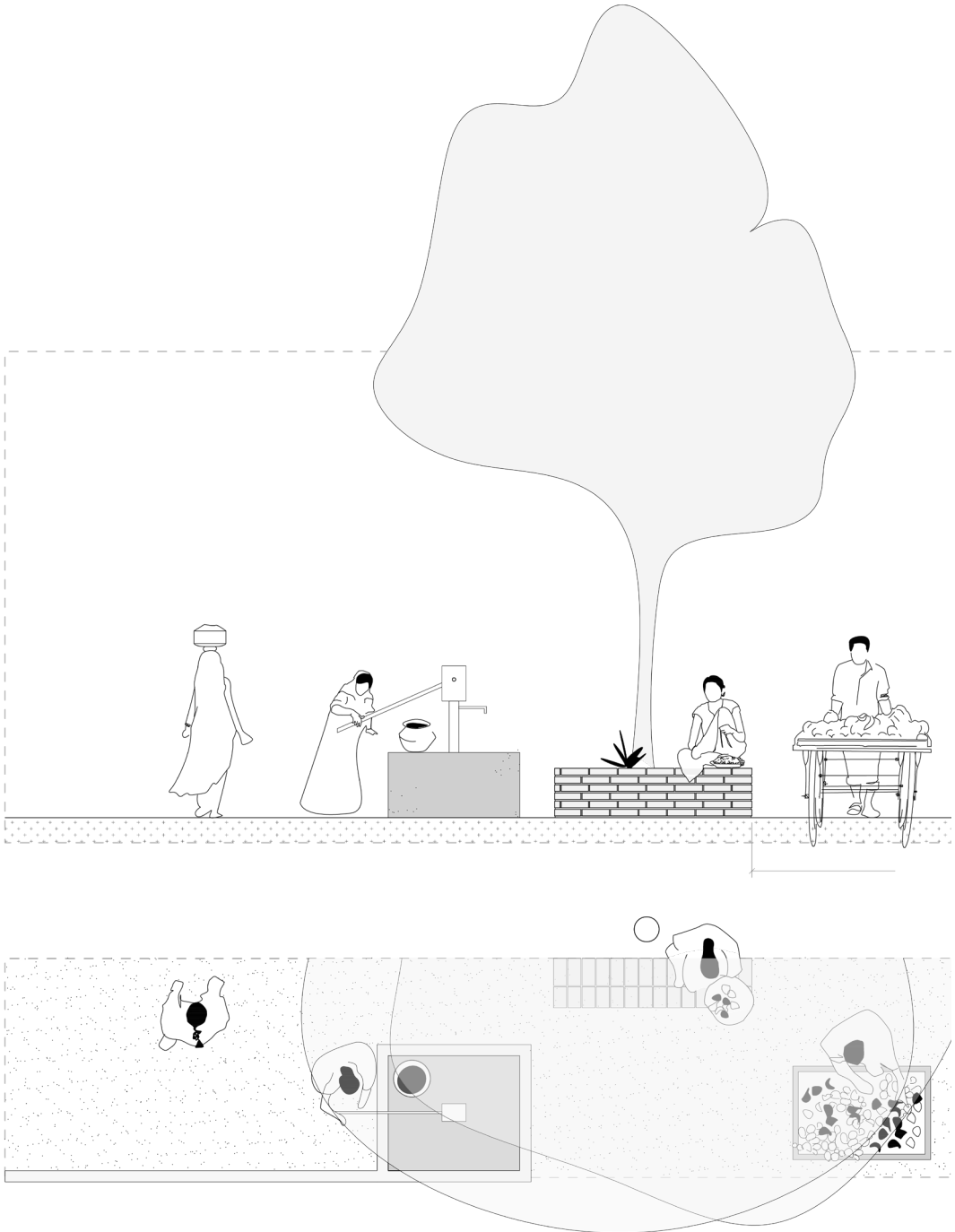


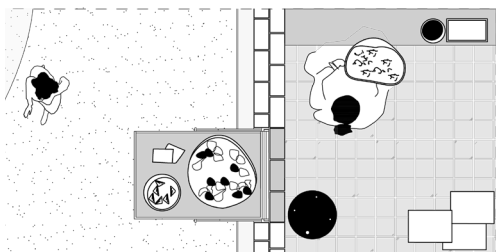
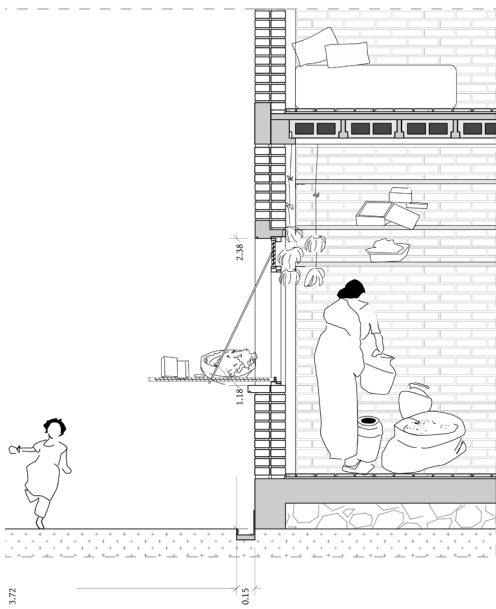




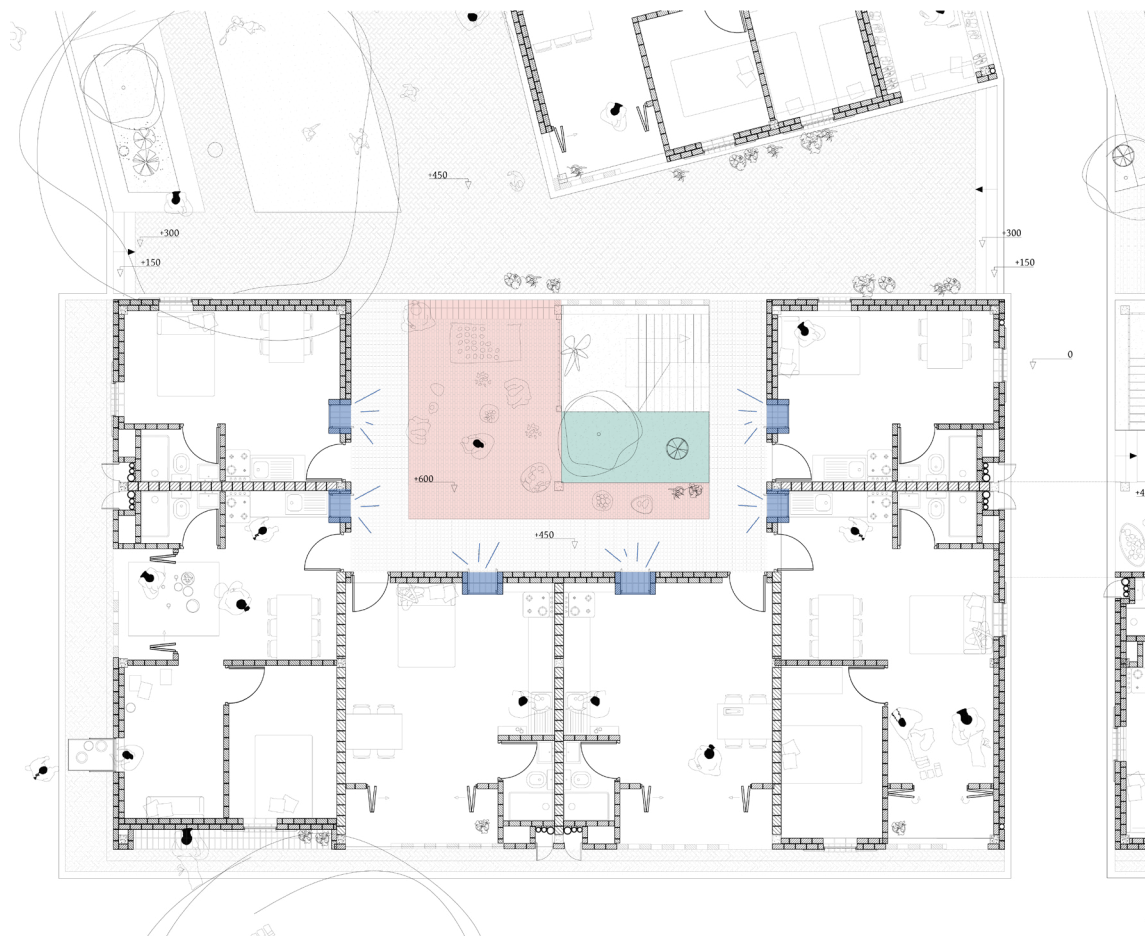






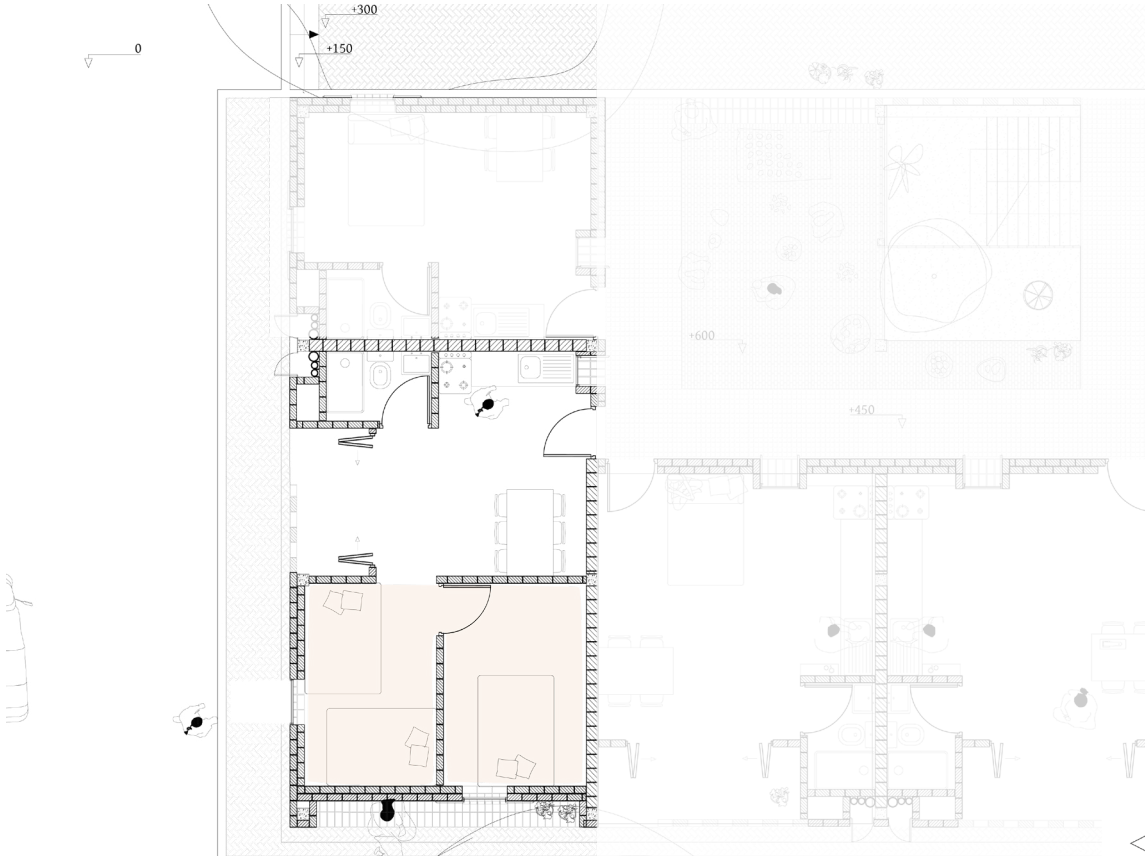


# Communal step



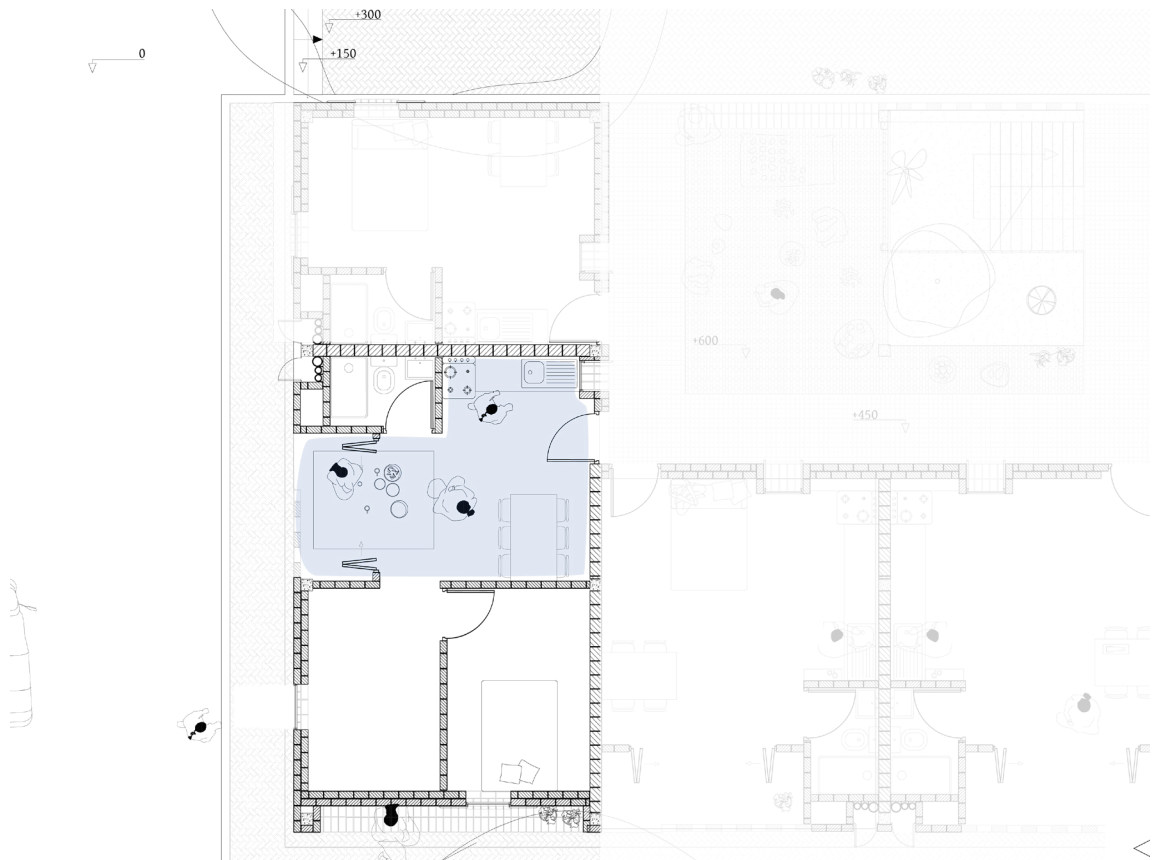


Dwellings - Multifunctional space - Sleeping





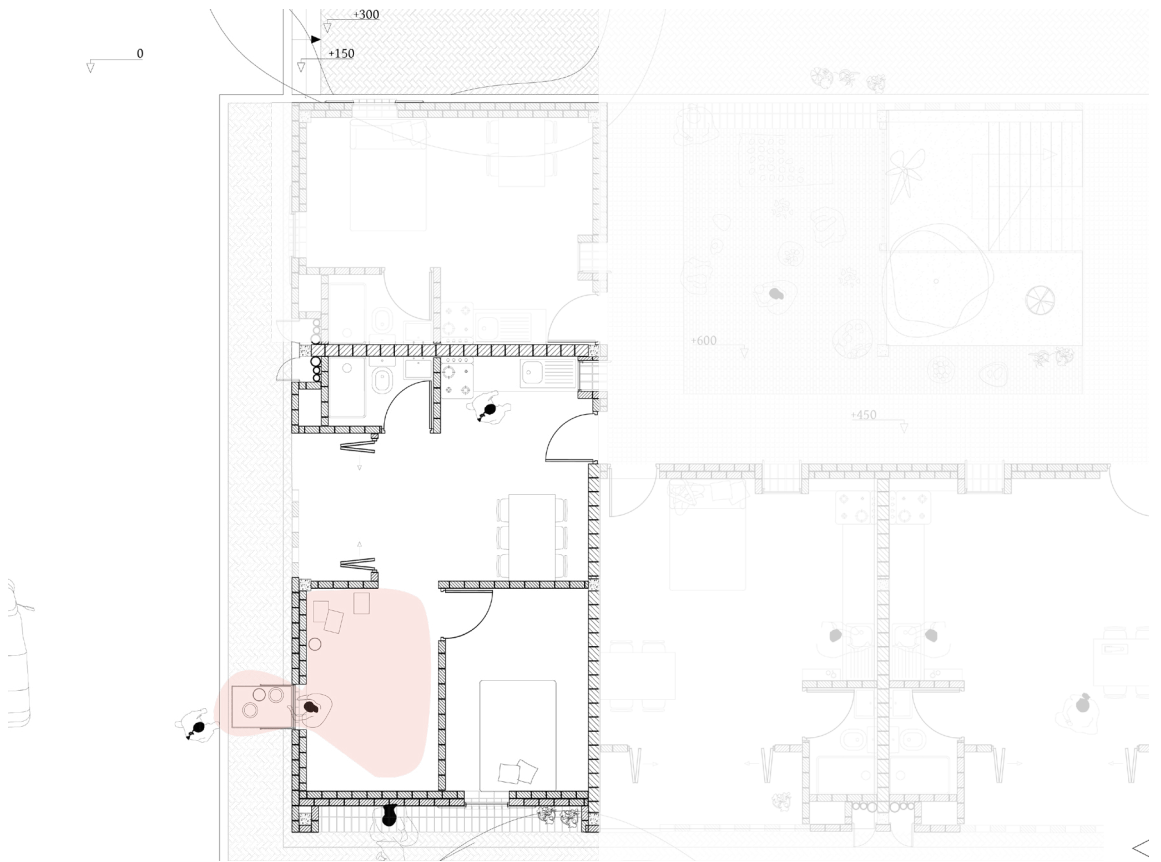
# Dwellings - Multifunctional space -Cooking







# Dwellings - Multifunctional space -Working/ Seling







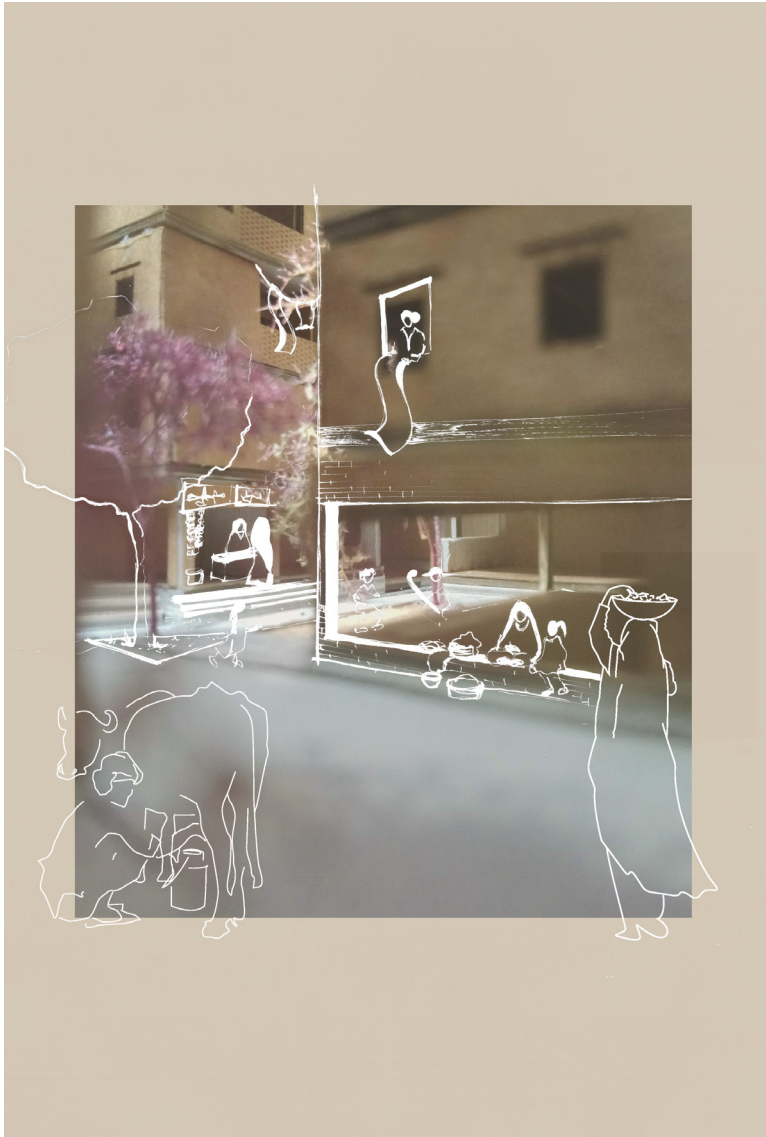






















### **3. References**

1. Prasad, Ambika, 'Entrepreneurship Among Rural Indian Women: Empowerment Through Enterprise', from 'Indian Women as Entrepreneurs, An Exploration of Self-Identity', Payal Kumar Editor, New Delhi, India, (2016)



