

METAVALLEY

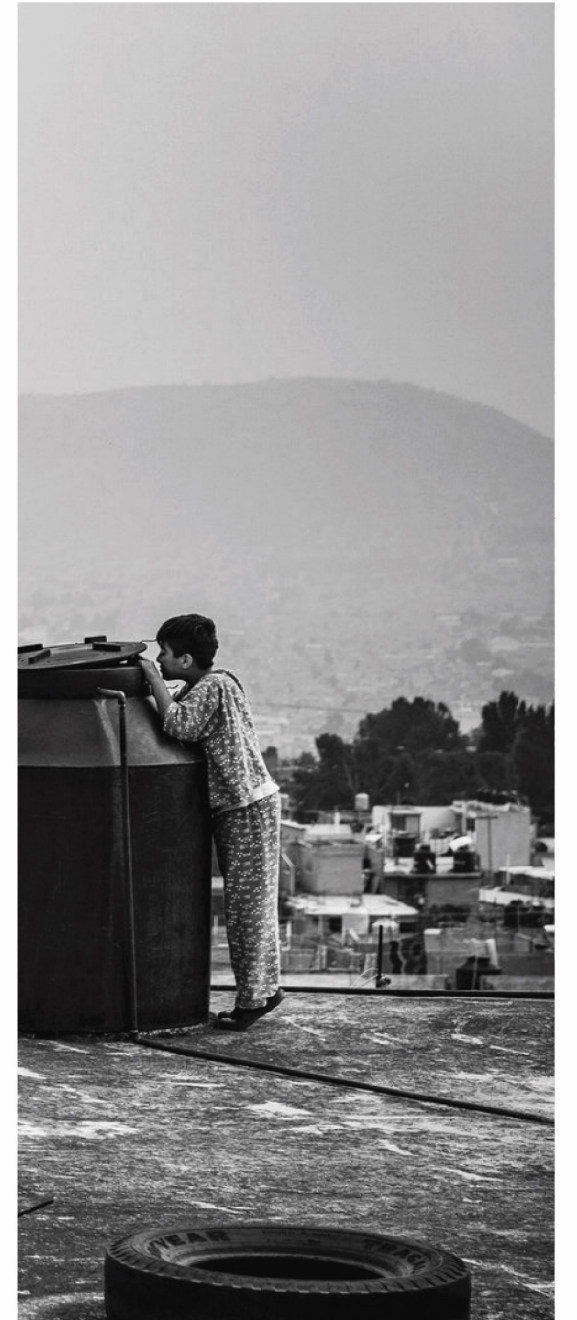
Explorations of an *adapted* geodesign framework
to integrate a regenerative approach and planning
in the Metropolitan Area of the Valley of Mexico

P5 Presentation by
Emma Paola Flores Herrera

Faculty of Architecture and the Built Environment
Delft University of Technology

First mentor: Dipl.- Ing. Alexander Wandl
Second mentor: Dr. Diego Andrés Sepulveda

External examiner: Dr. André Mulder



Theory

Regenerative
Development
and Design

- A system of technologies and strategies
- Generation the whole system understanding of a place
- Development of strategic systemic thinking capacities
- Engagement of the stakeholders required to ensure regenerative design

Theory

Regenerative Development and Design

- A system of technologies and strategies
- Generation the systemic understanding of a place
- Development of strategic systemic thinking capacities
- Engagement of the stakeholders required to ensure regenerative design

Theory

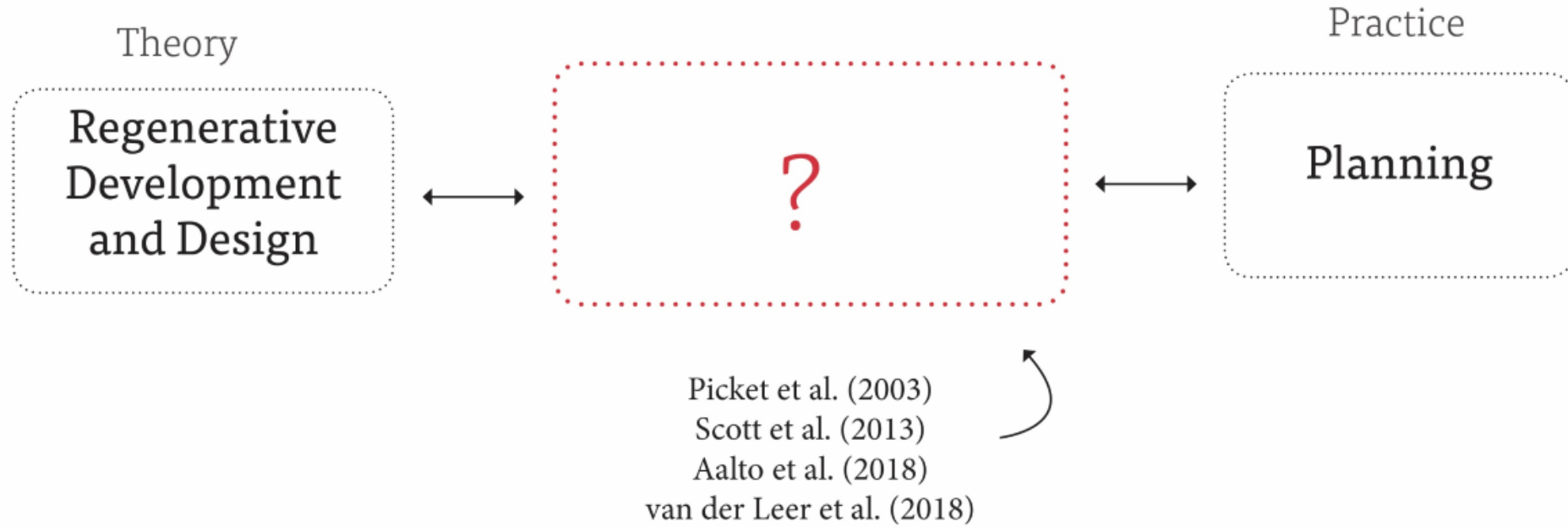
Regenerative
Development
and Design

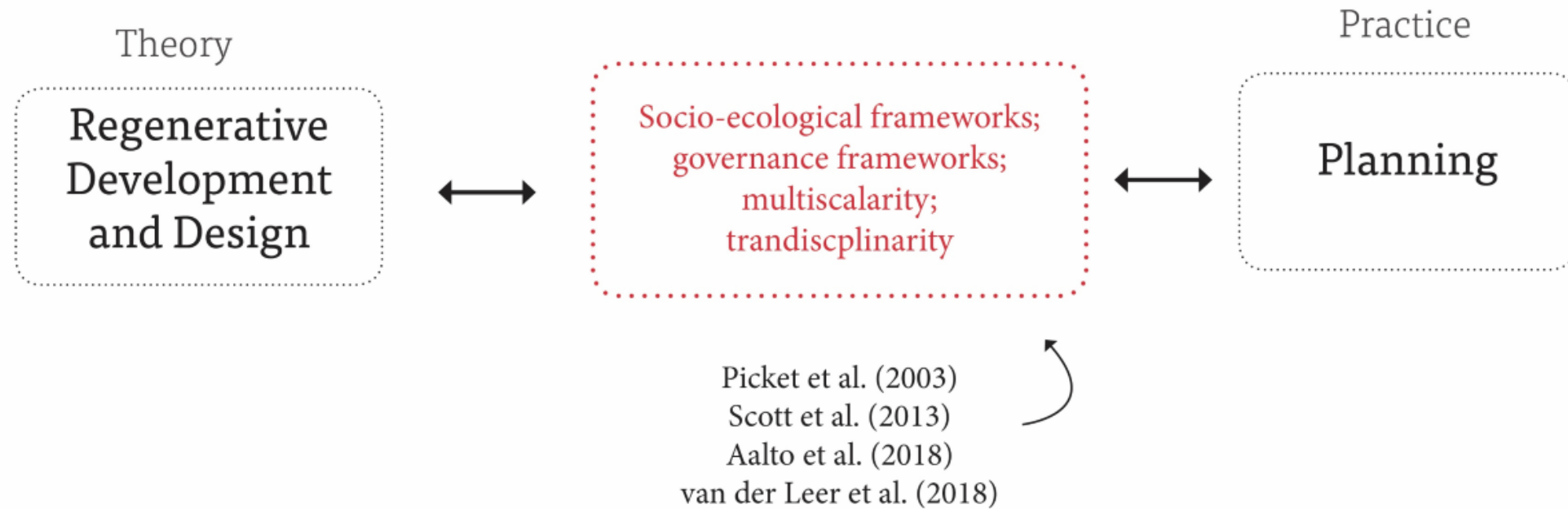
- A system of technologies and strategies
- Generation the whole system understanding of a place
- Development of strategic systemic thinking capacities
- Engagement of the stakeholders required to ensure regenerative design

Theory

Regenerative
Development
and Design

- A system of technologies and strategies
- Generation the whole system understanding of a place
- Development of strategic systemic thinking capacities
- Engagement of the stakeholders required to ensure regenerative design





Metropolitan Area of the Valley of Mexico



Why the MAVM as a case study?

Urbanisation

Water management



Image: Kimmelman, 2017



1500



1600-1800



1800-1950

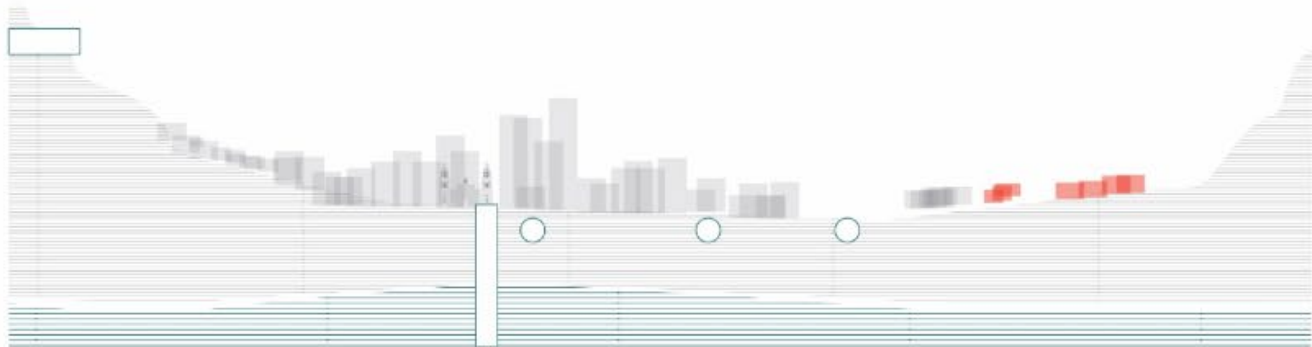


1950-1990

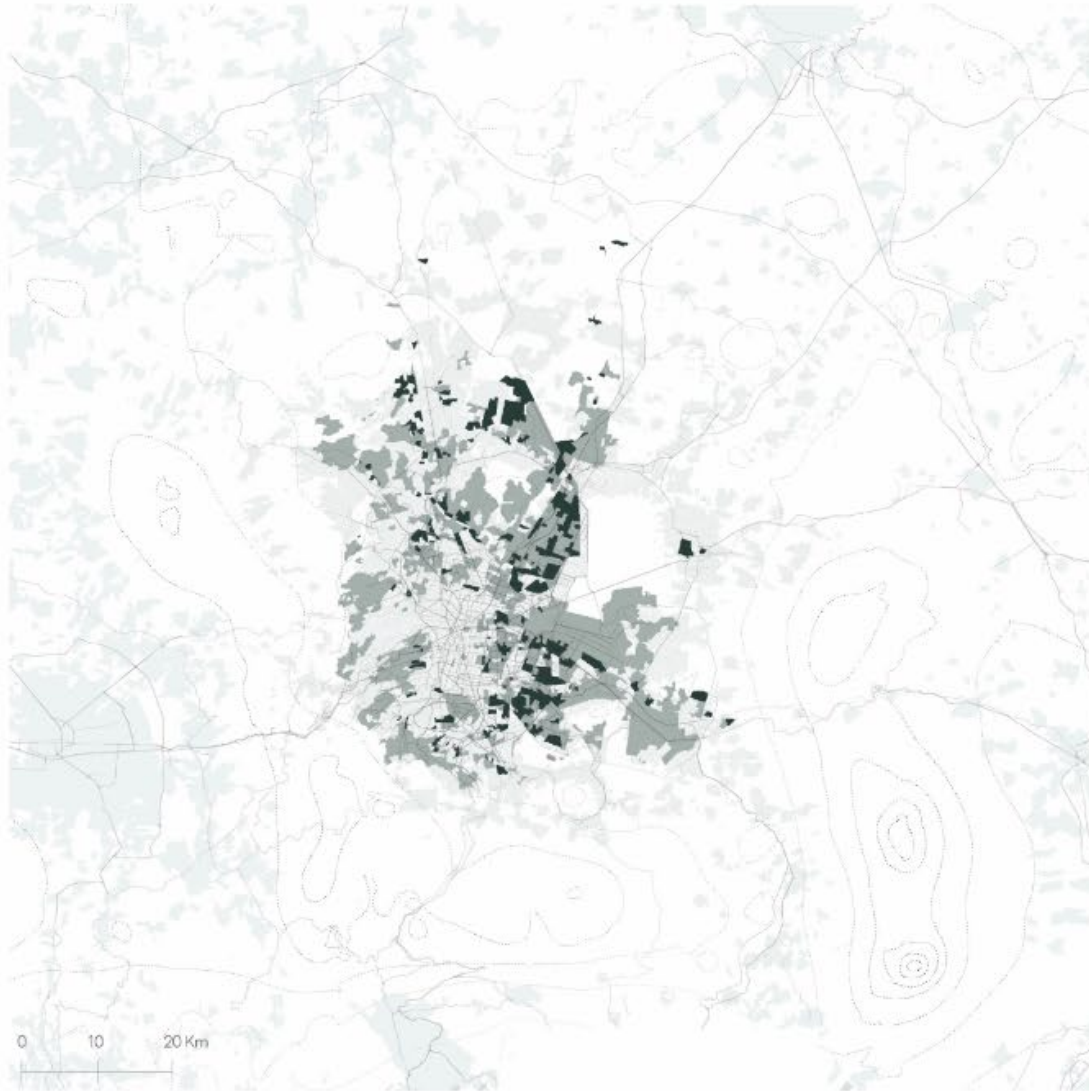


1990-2018

Urbanisation



Urbanisation



Social and informal h
■ Informal housing
■ Social housing



Image: Googlemaps, 2018



Image: Googlemaps, 2018

Marginalisation- Social housing development



Image: Marosi, 2017



Image: Marosi, 2017

Urbanisation

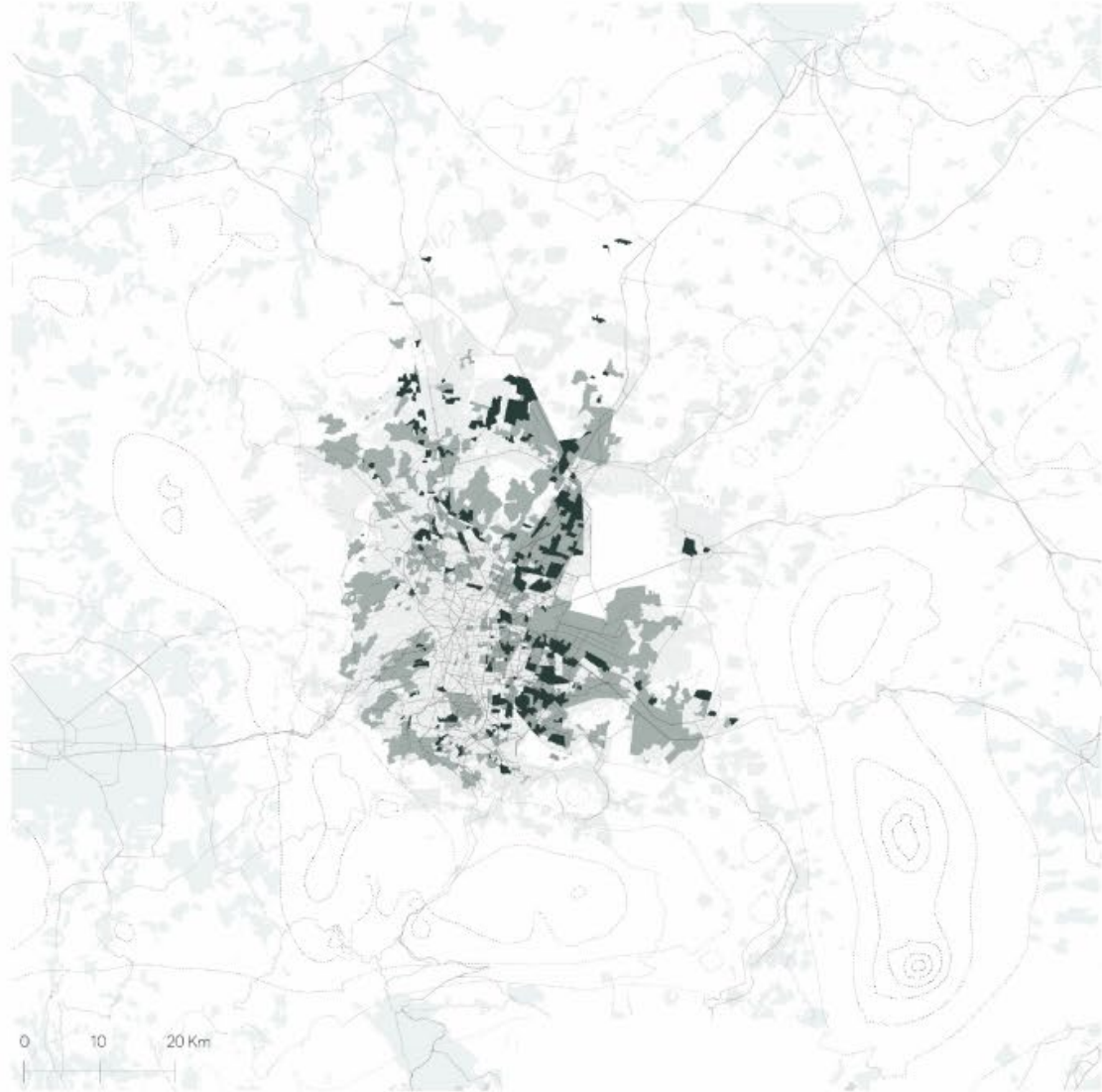


Image: Googlemaps, 2018



Image: Googlemaps, 2018

Social and informal h
■ Informal housing
■ Social housing

Marginalisation- Informal housing development



Image: De Jong, 2017



Image: De Jong, 2017

Marginalisation-Central city

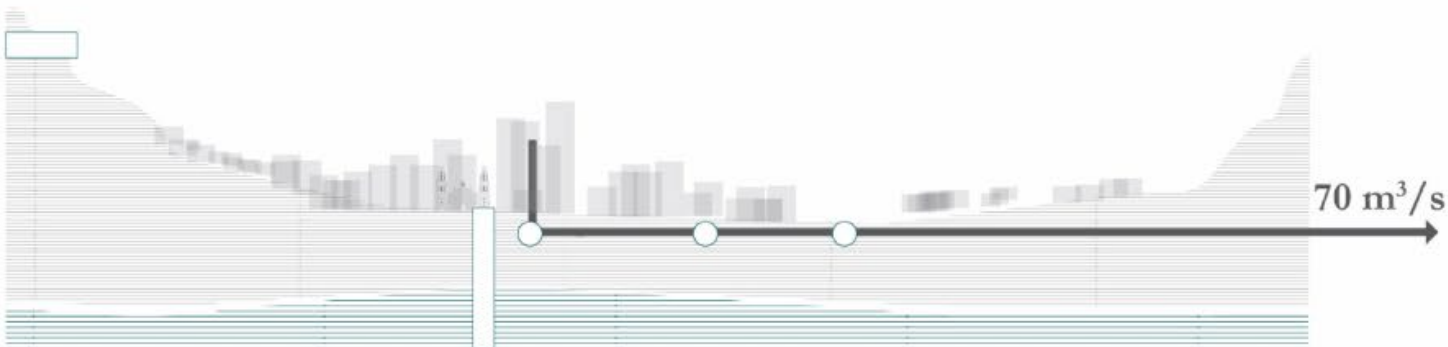


Image: Farlom, 2018

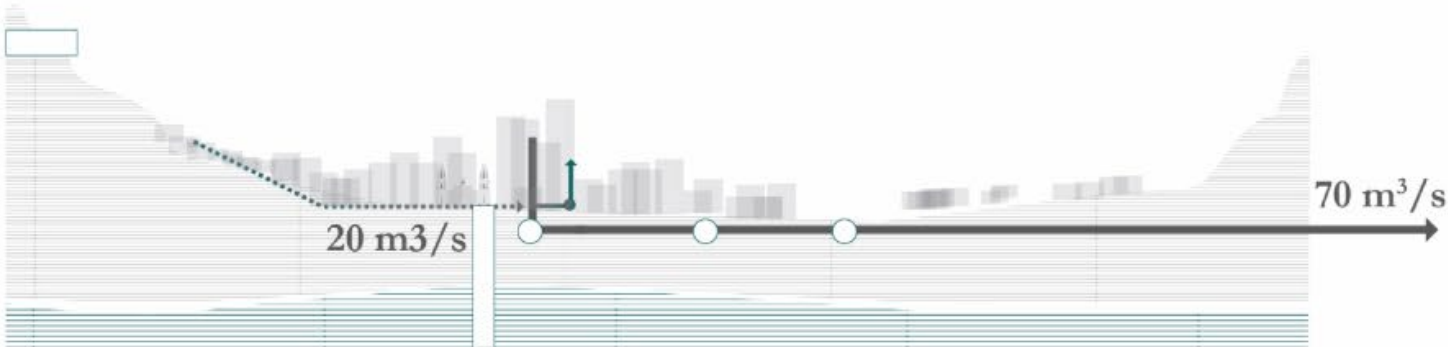


Image: Farlom, 2018

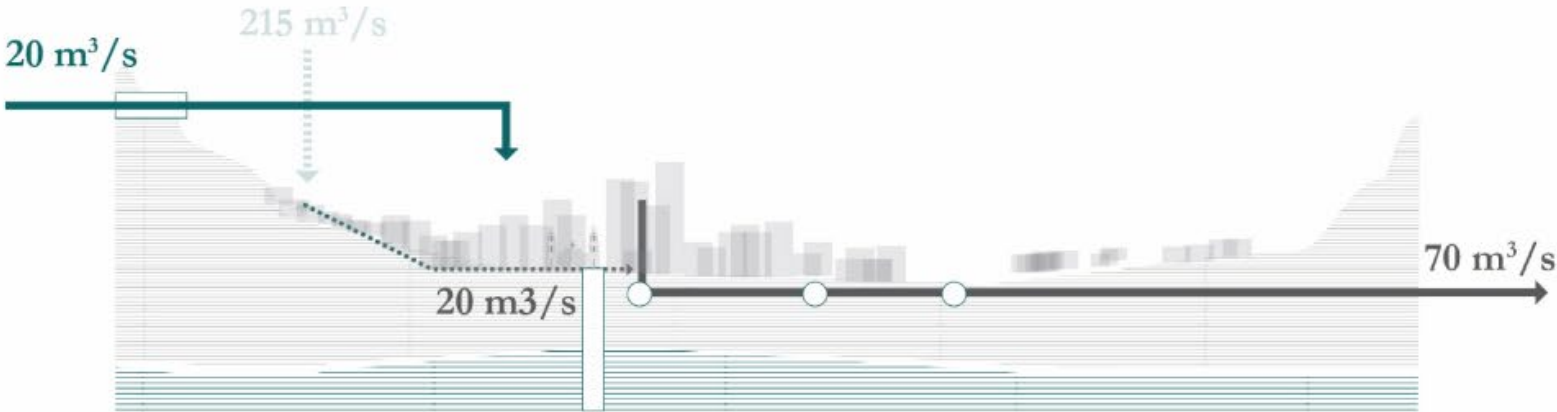
Water management



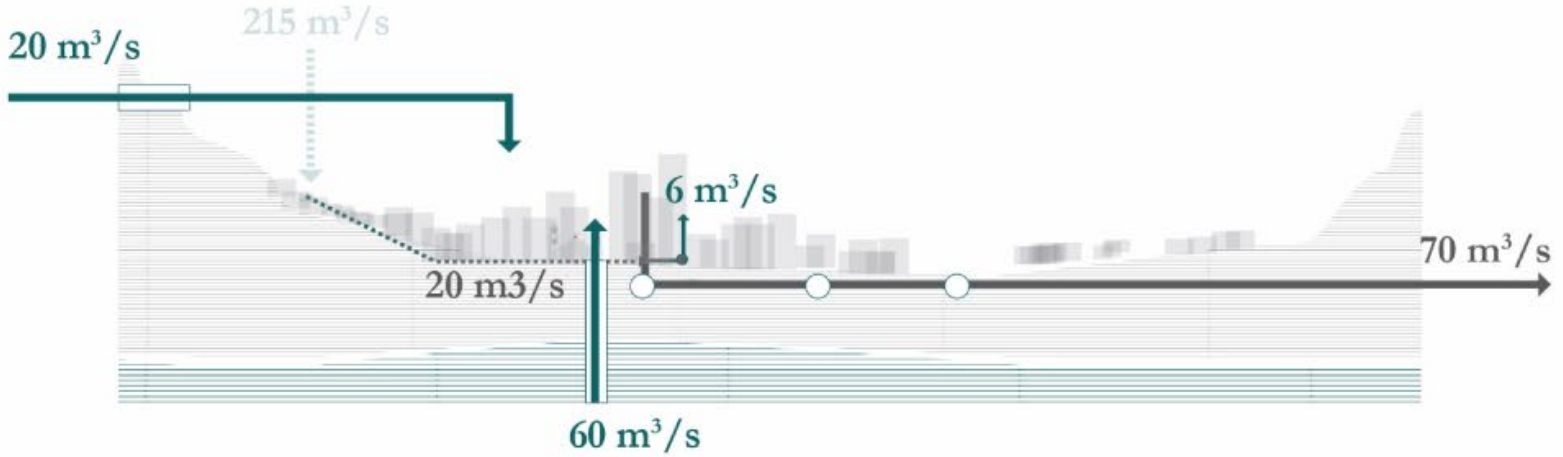
Water management



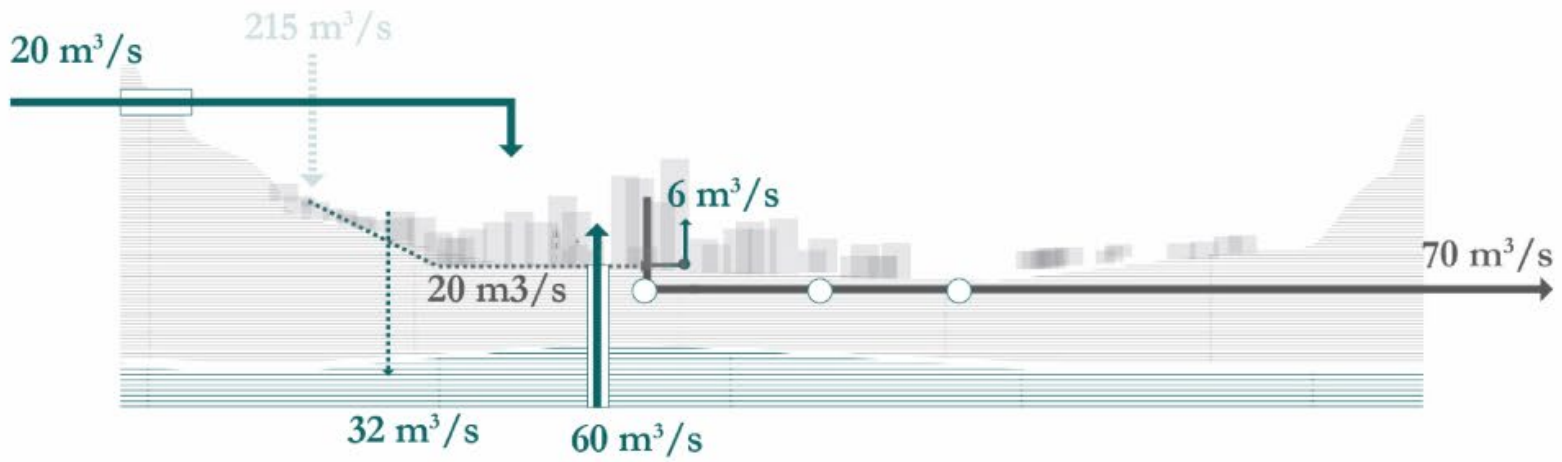
Water management



Water management



Water management



Water scarcity- subsidence

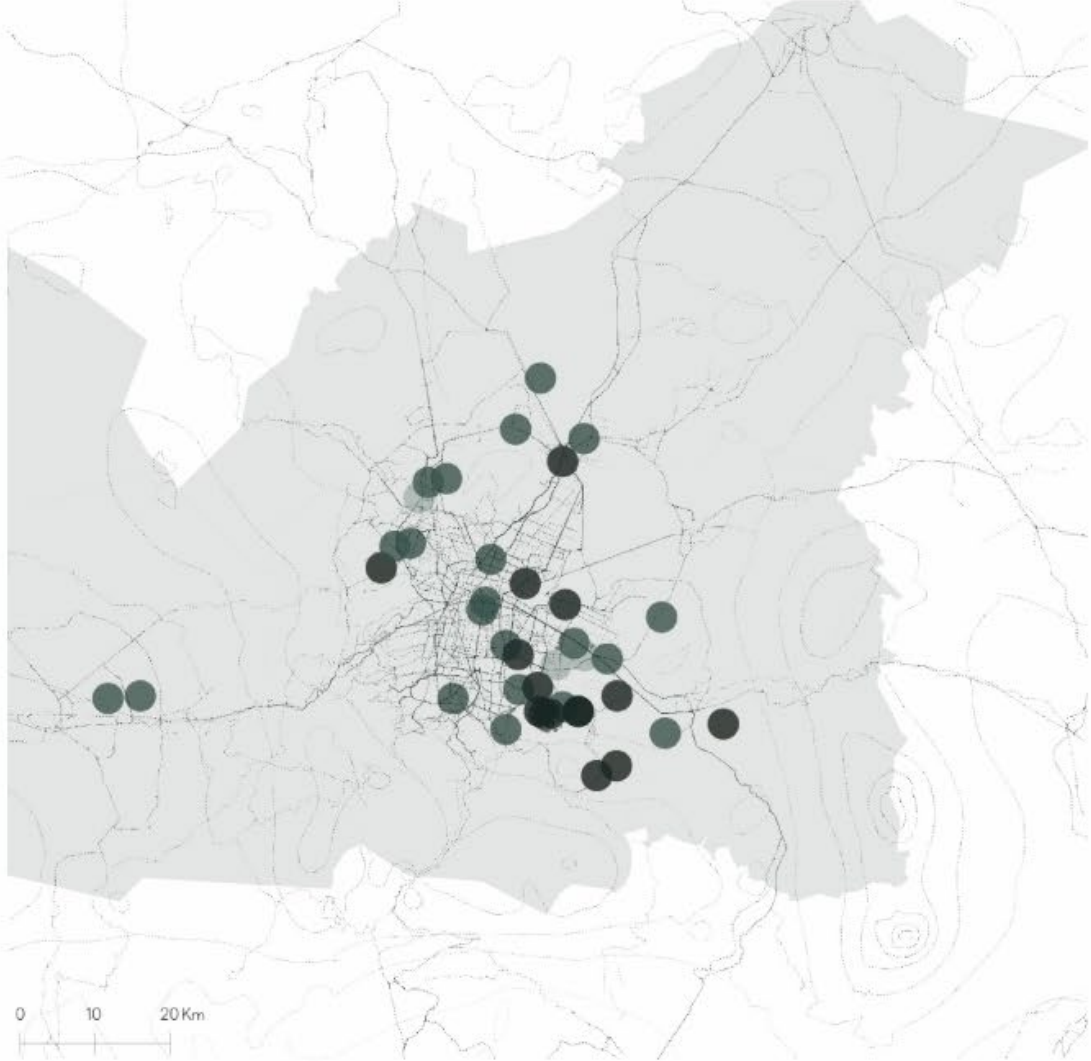


Image: Alef, 2017



Image: Salazar, 2017

Water scarcity- floodings



Image: Pontaza, 2018



Image: Televisa, 2017

Water scarcity- draughts

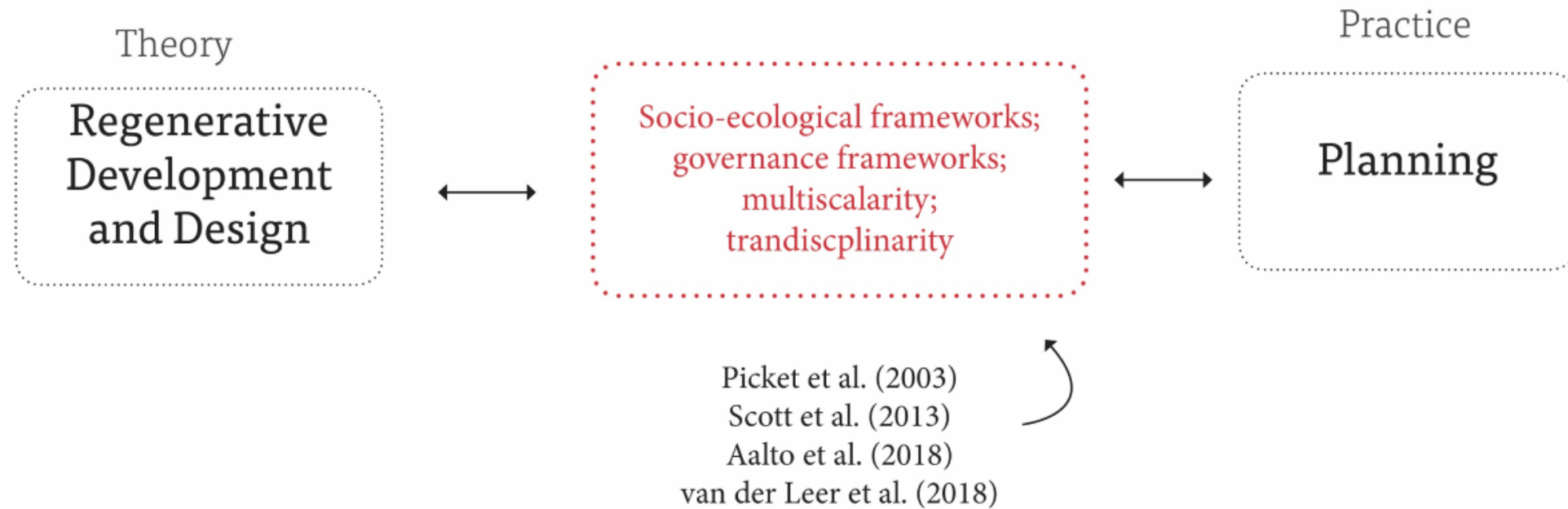


Image: Olvra, 2017



Image: Corona, 2018

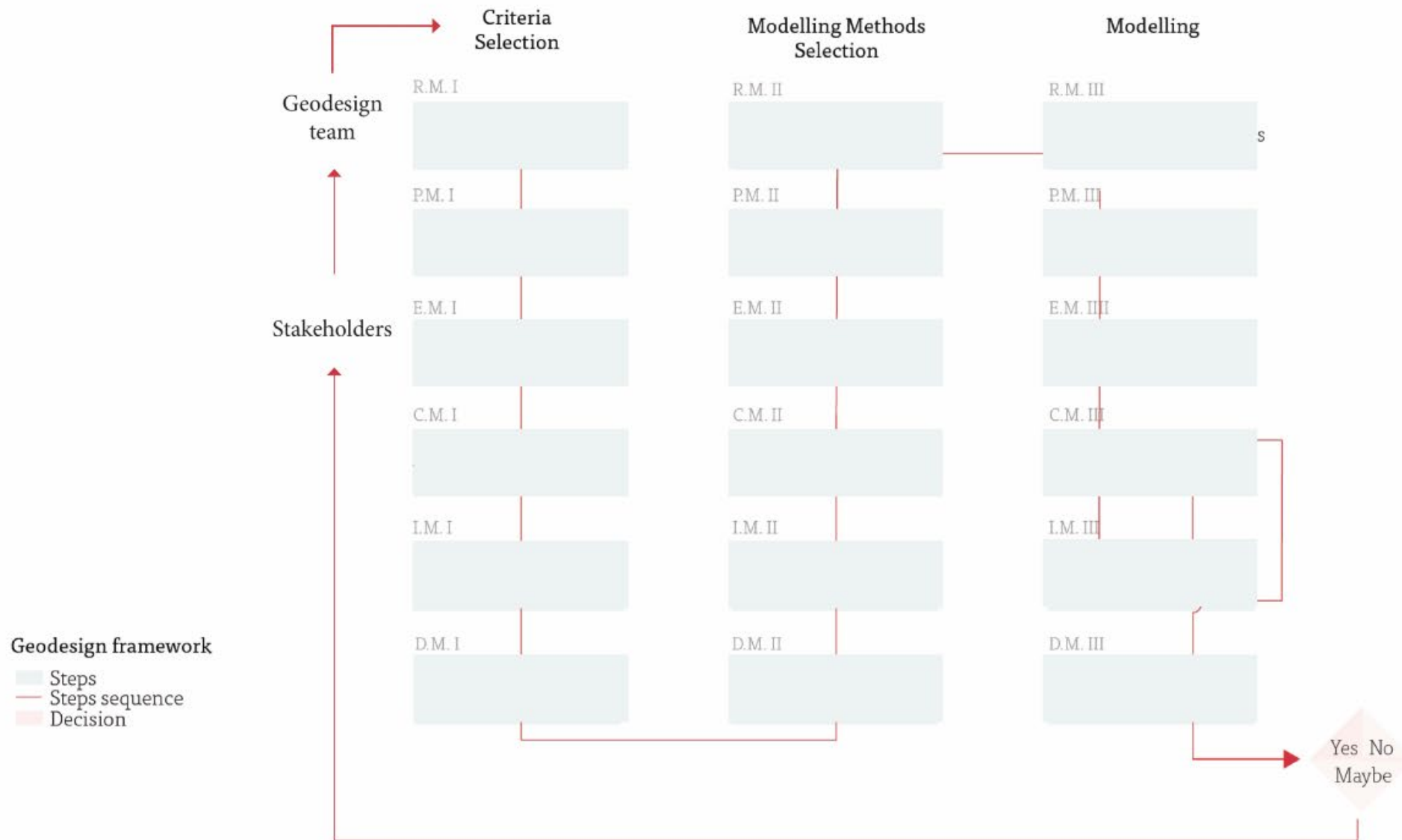
How can regenerative development and planning practices be integrated in the case study of the MAVM in order to circumvent the current deteriorating social-ecological system?

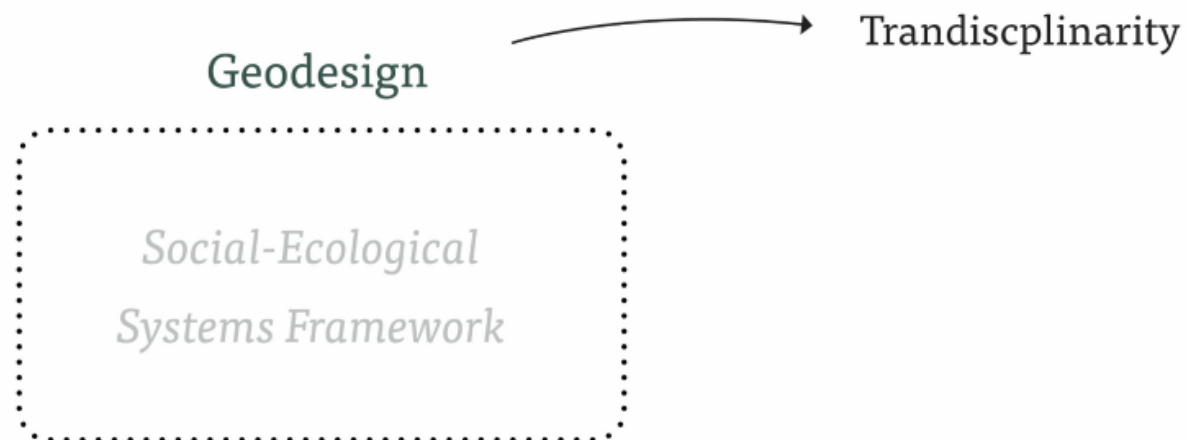




Geodesign

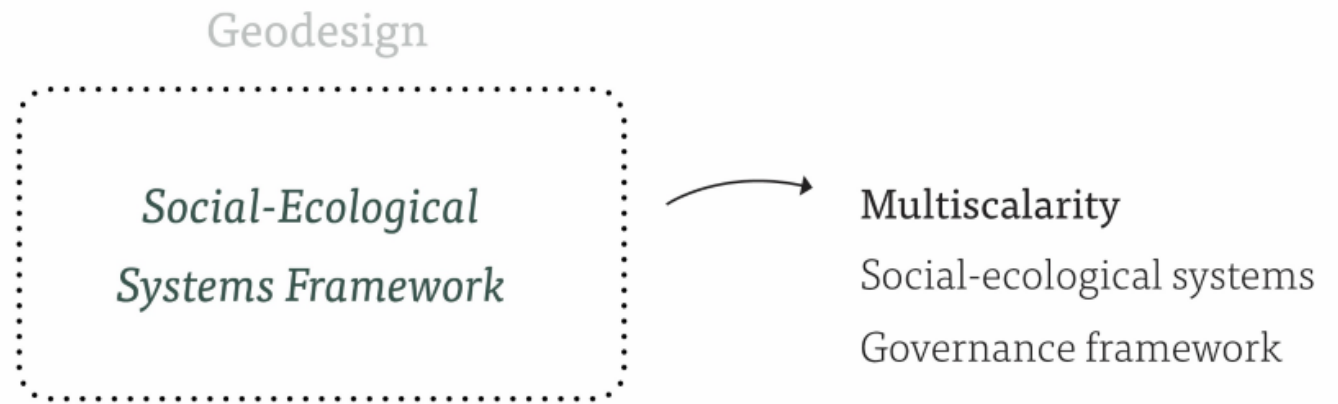
*Social-Ecological
Systems Framework*



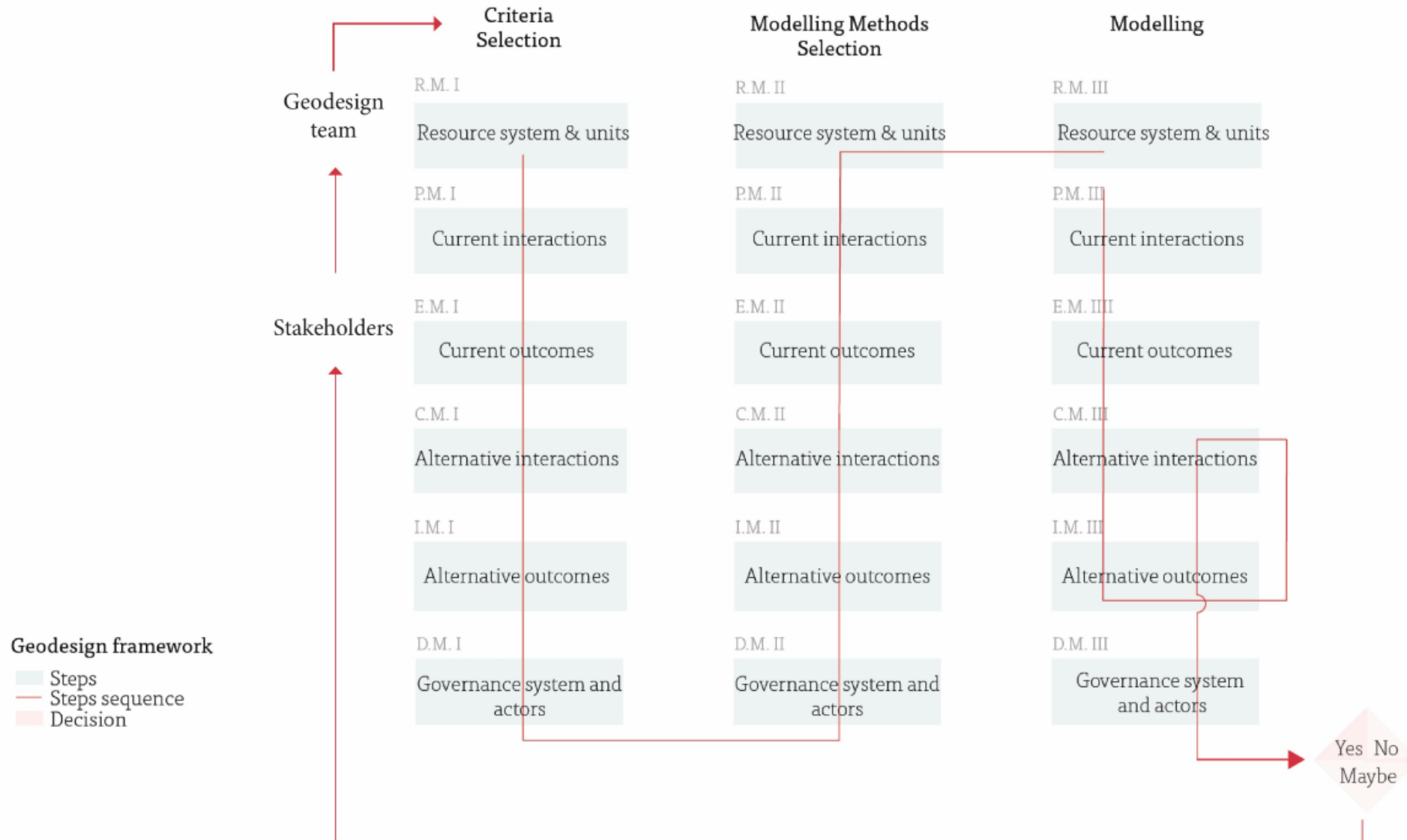


Geodesign

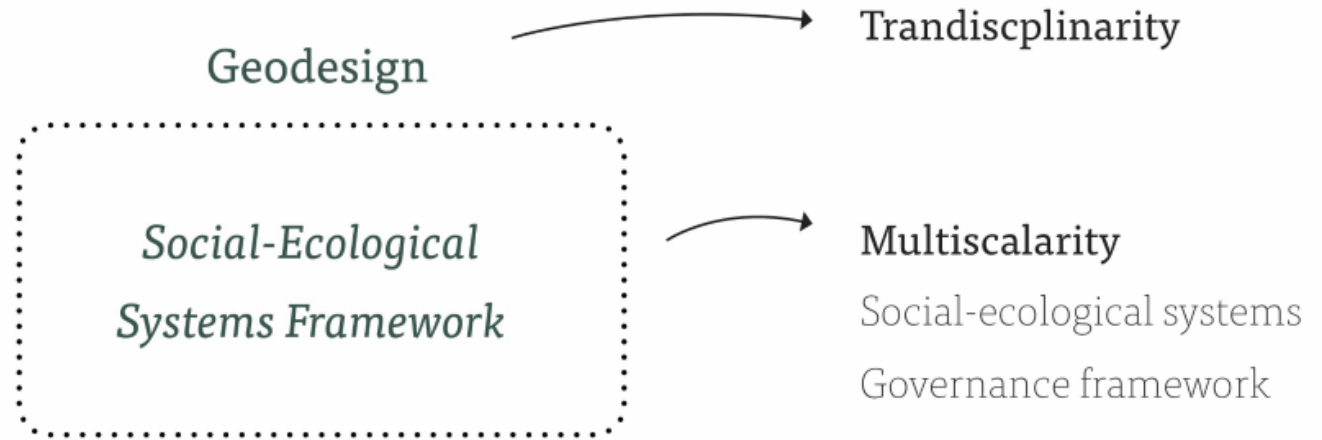
*Social-Ecological
Systems Framework*



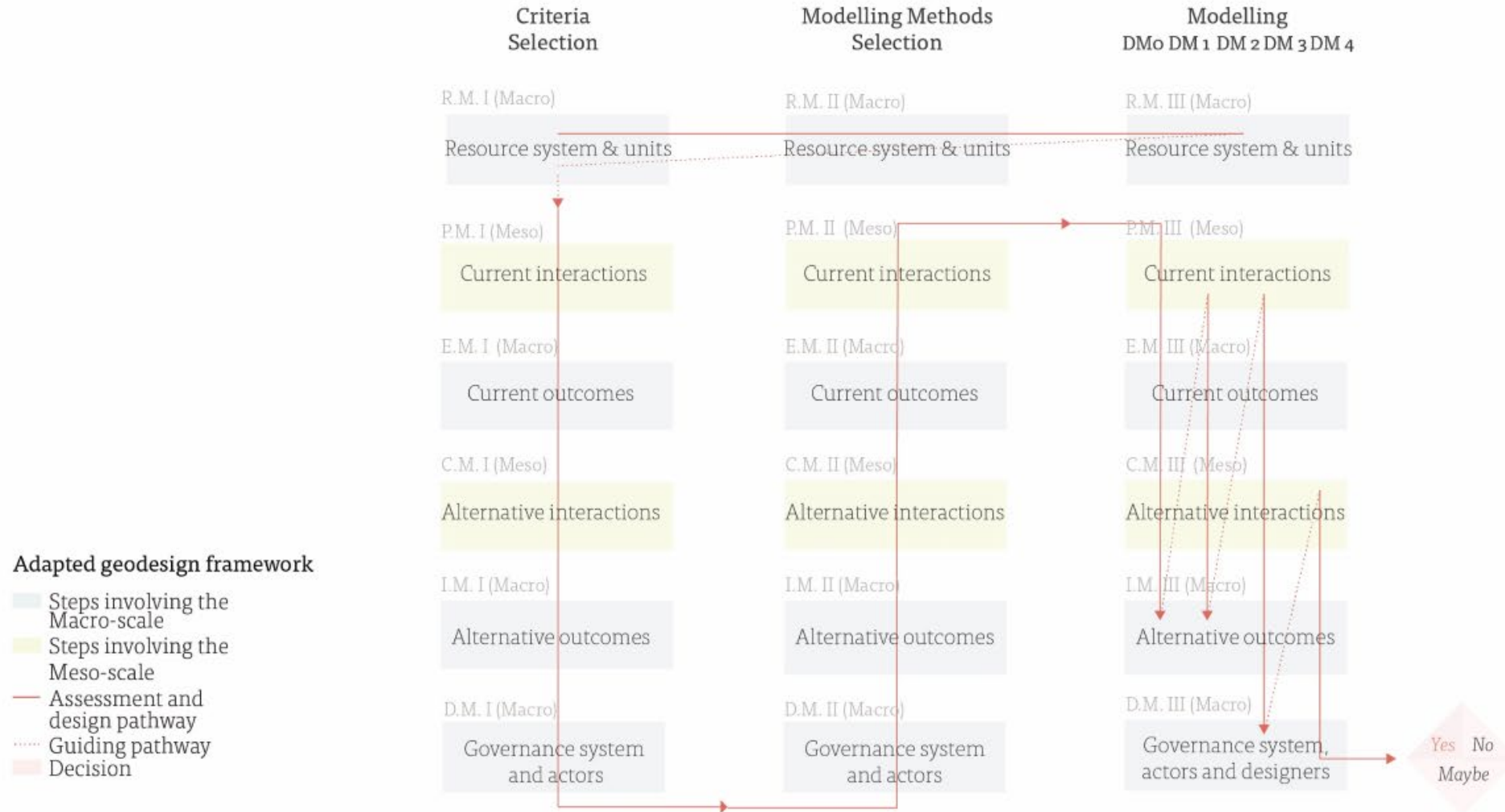
Adapted geodesign model



Adapted geodesign model



Adapted geodesign model



Iteration 0

Macro-scale

Meso-scale

Iteration 0

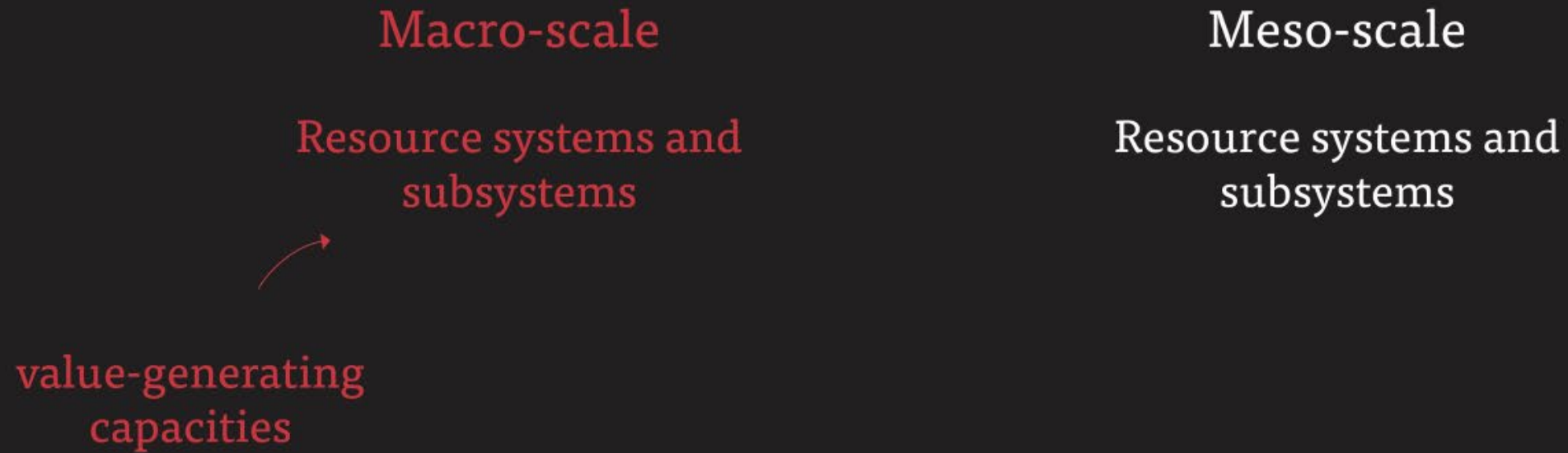
Macro-scale

Resource systems and
subsystems

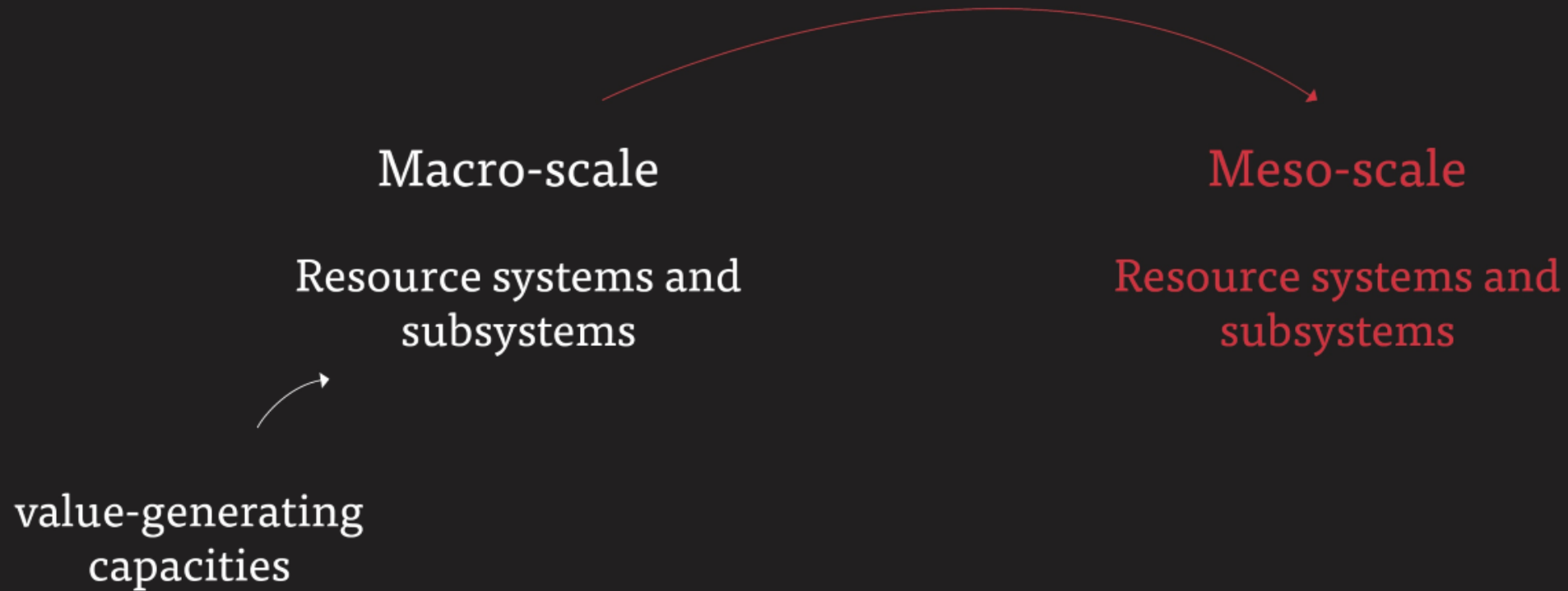
Meso-scale

Resource systems and
subsystems

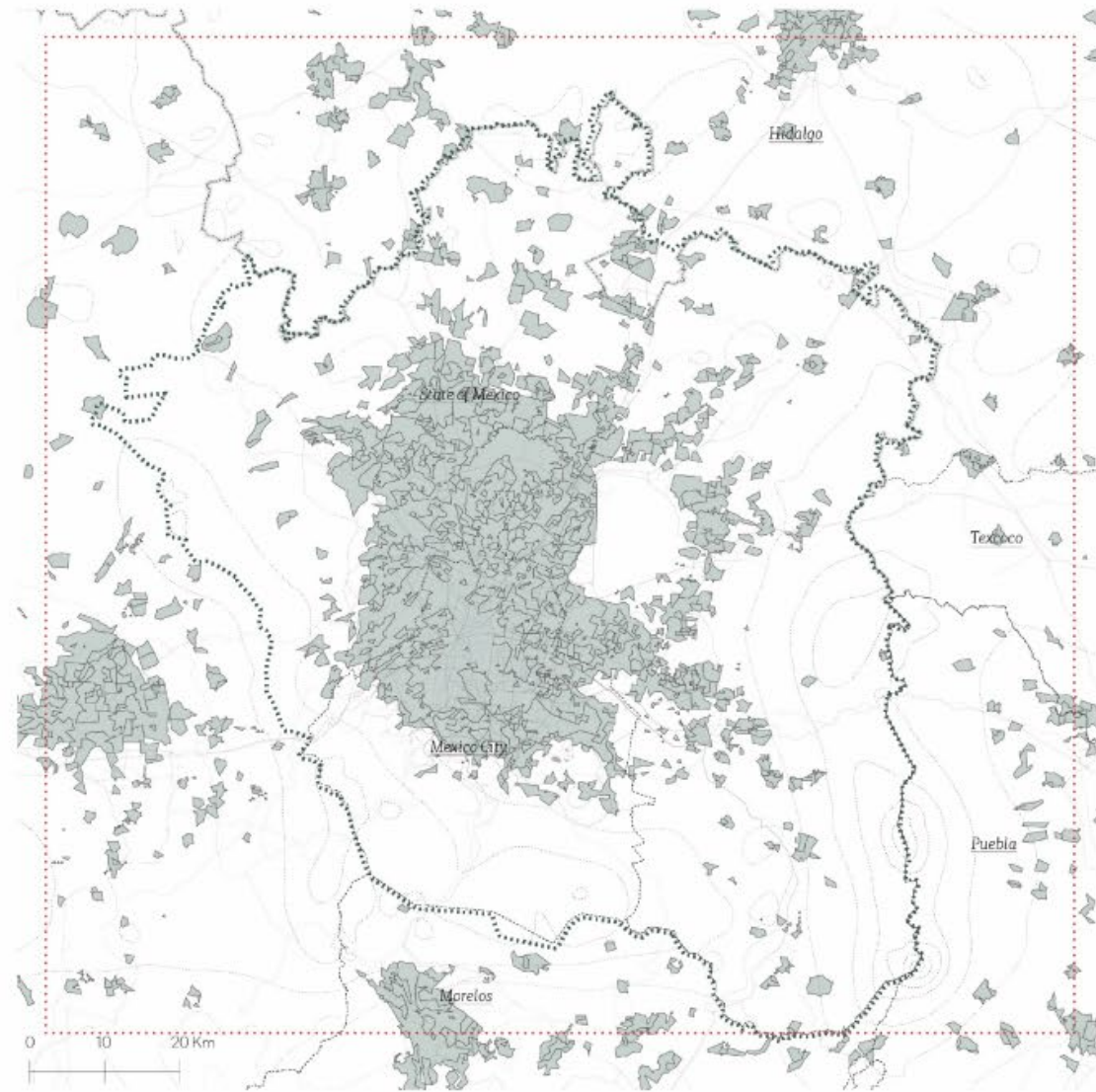
Iteration 0



Iteration 0



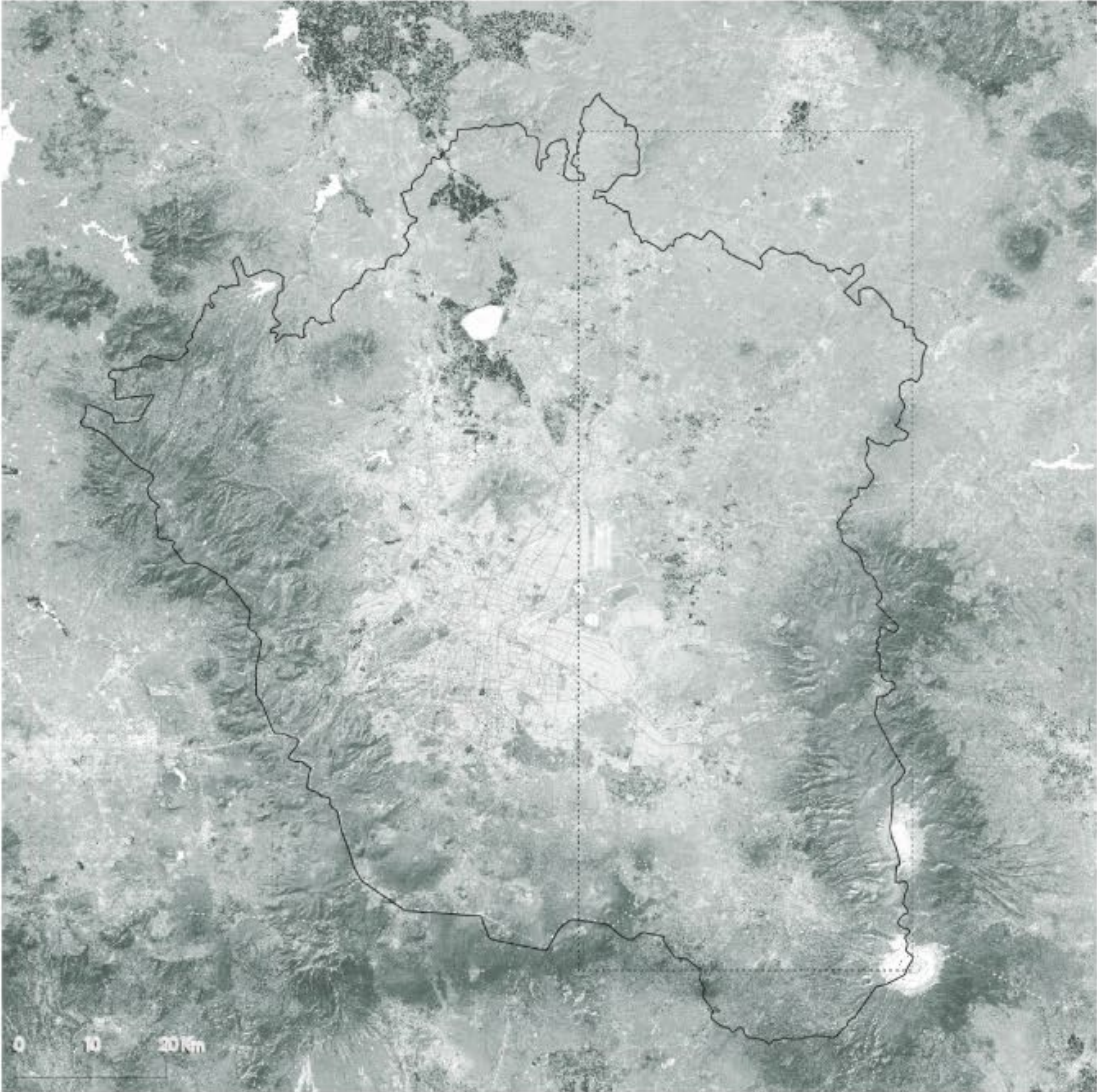
Social system and subsystems



Ecological system and subsystems



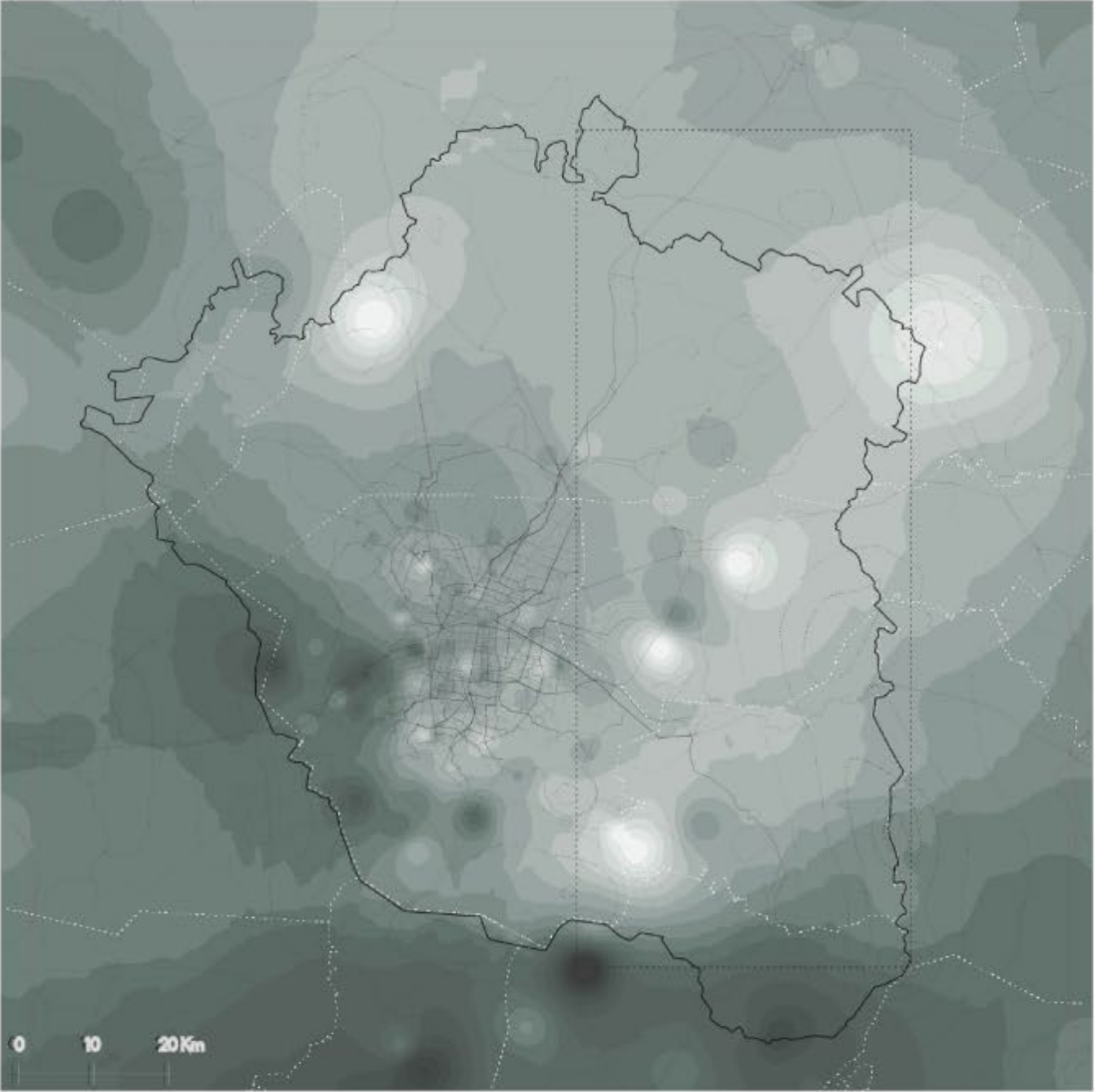
Soil permeability



Rainfall

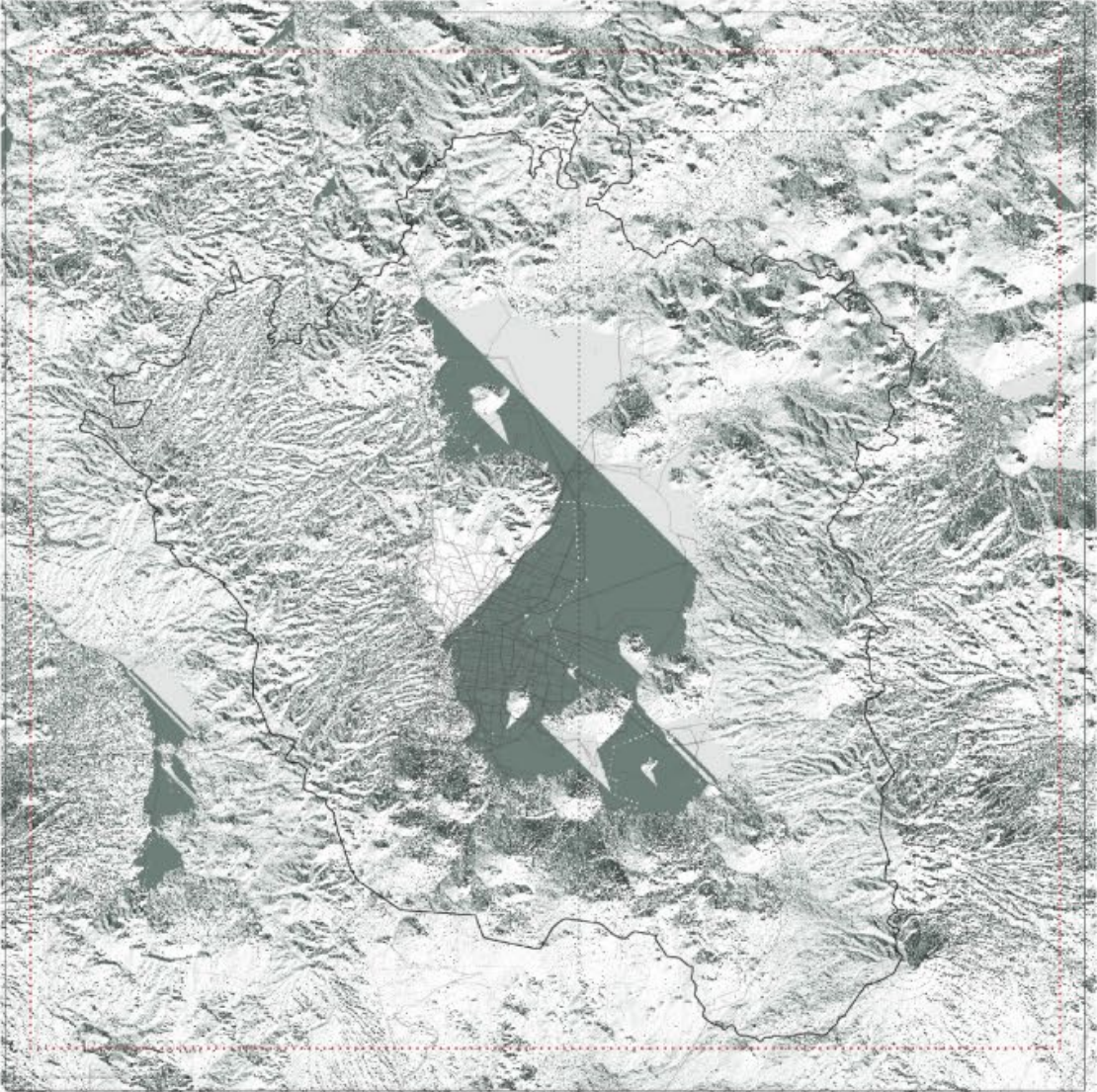
Precipitation

- 0-125 mm
- 125-400 mm
- 400-600 mm
- 600-800 mm
- 800-1200 mm
- 1200-1500 mm
- 1500-2000 mm
- 2000-2500 mm
- 2500-4000 mm

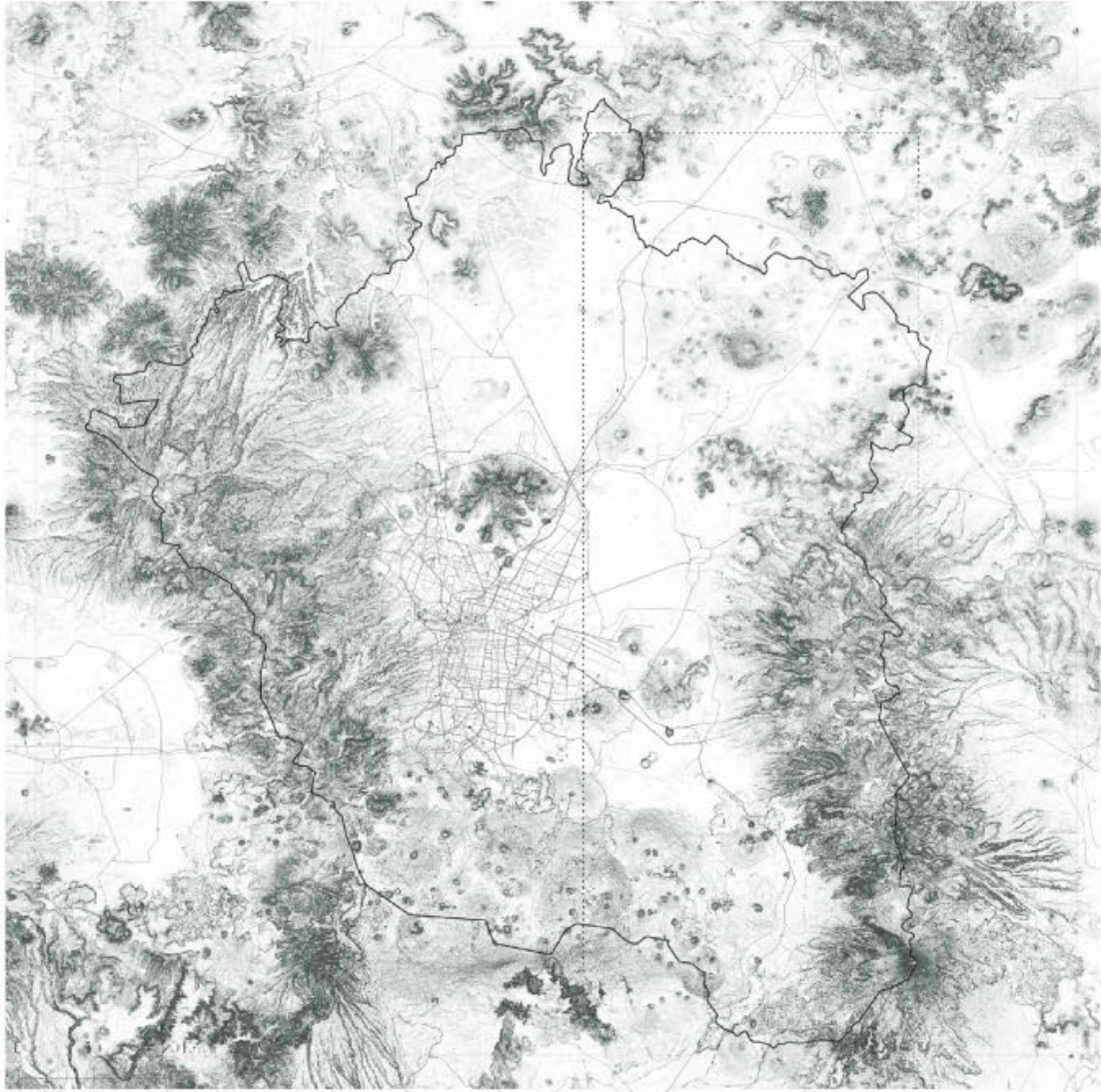


Runoff

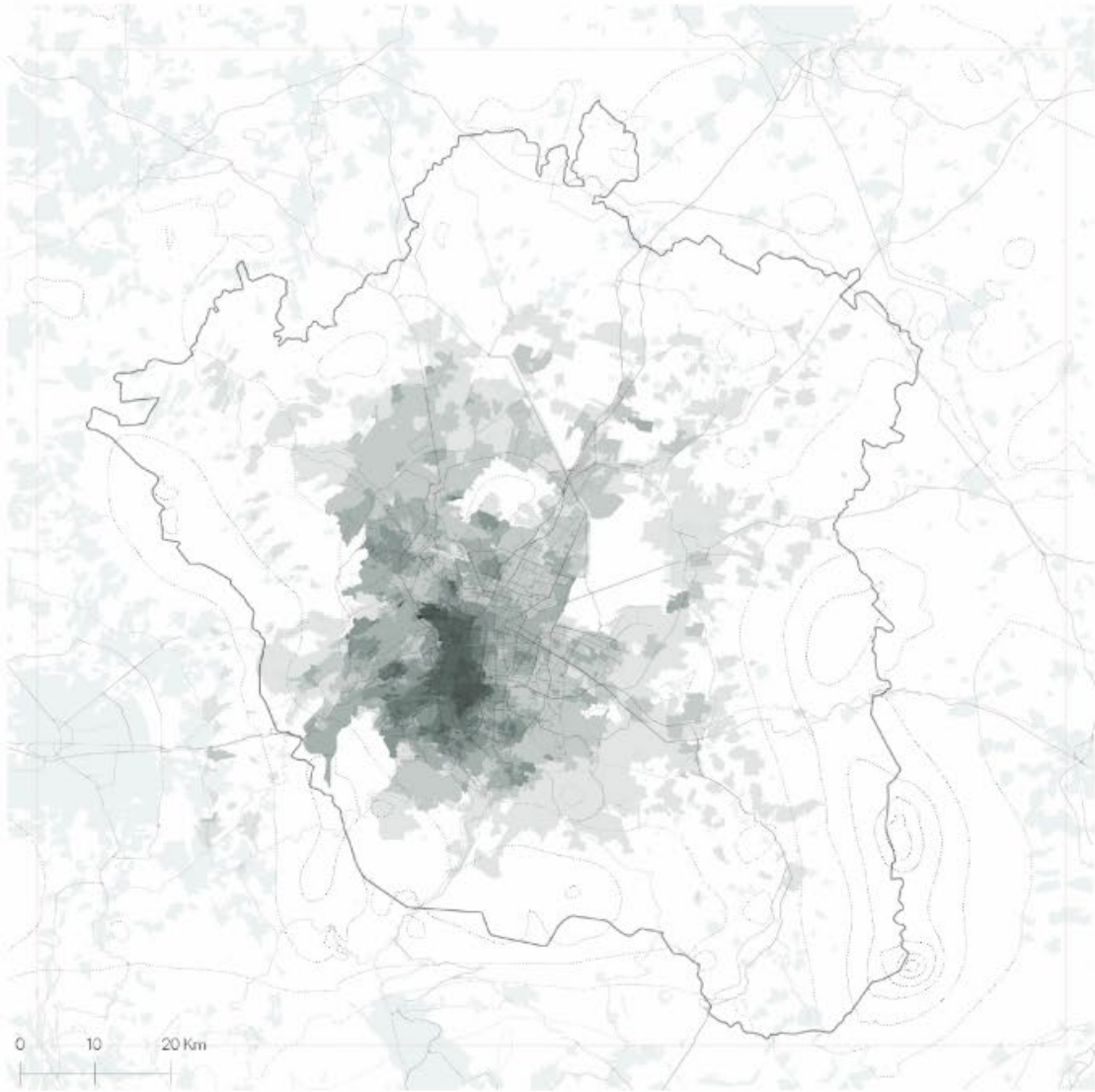
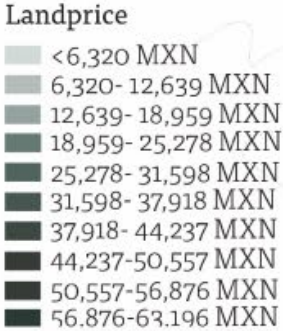
Runoff accumulation



Slope



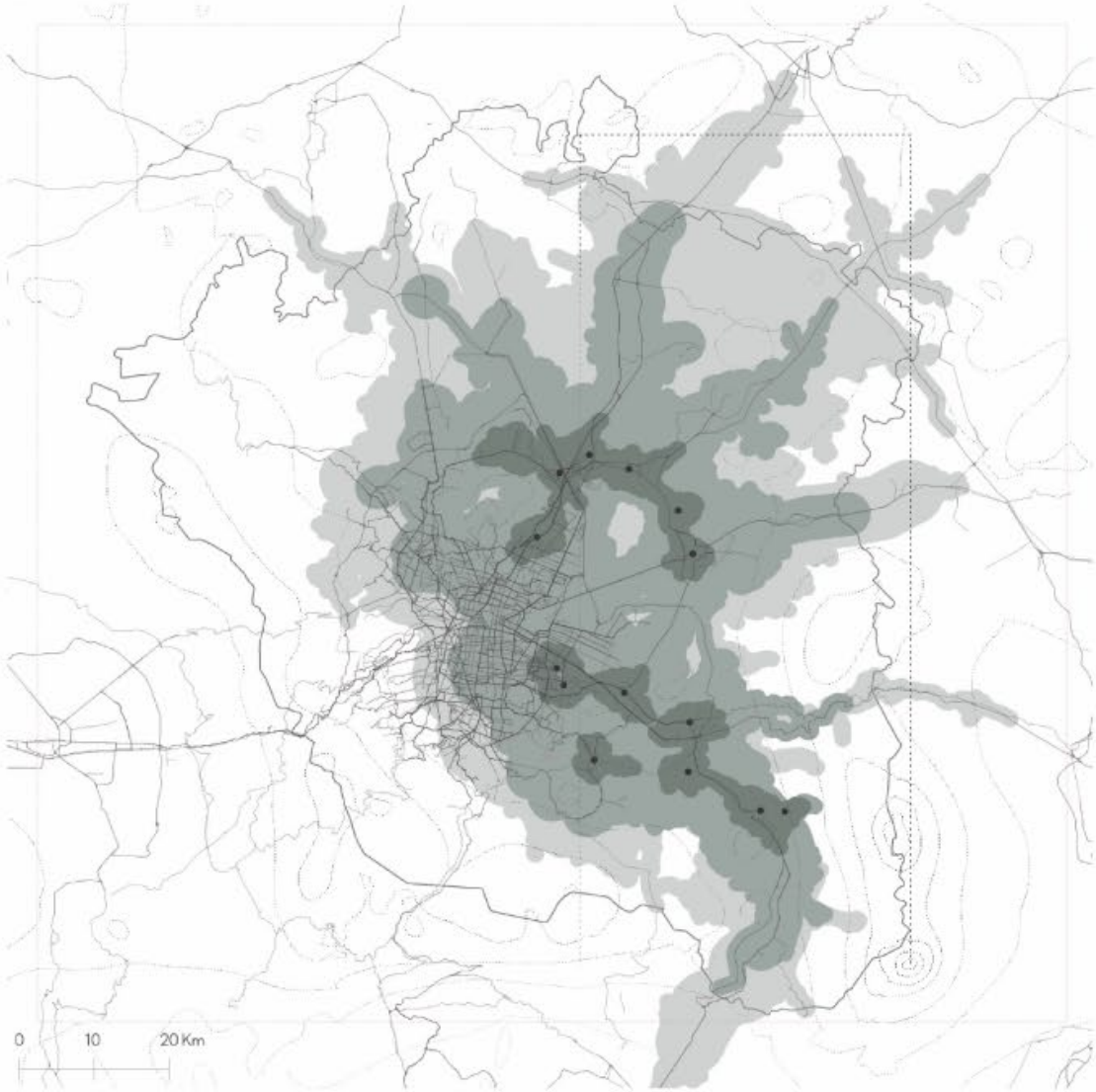
Landprice



Accesibility to employment centers

Public transport and pedestrian accesibility

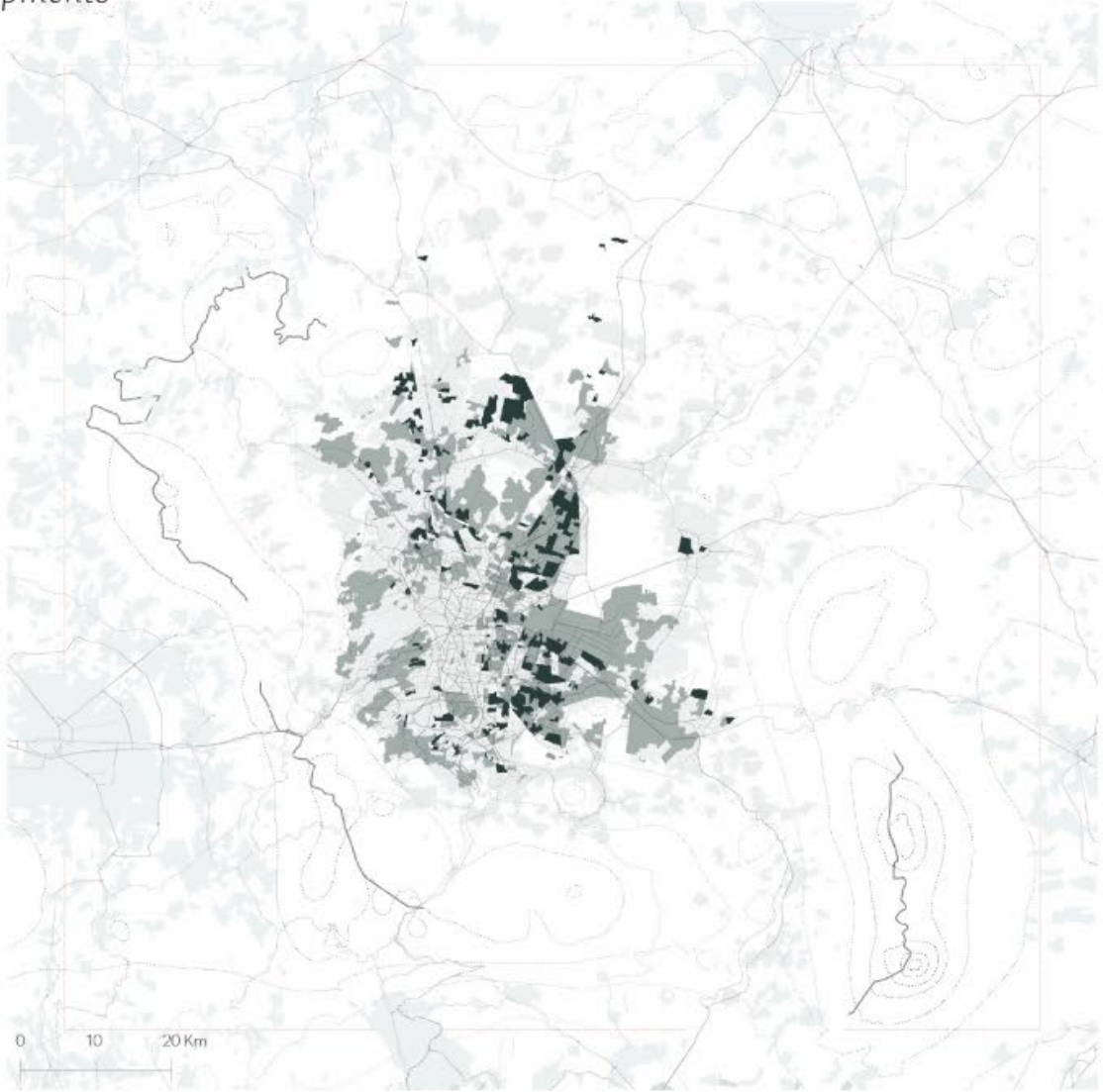
- <20 min
- < 40 min
- > 40 min



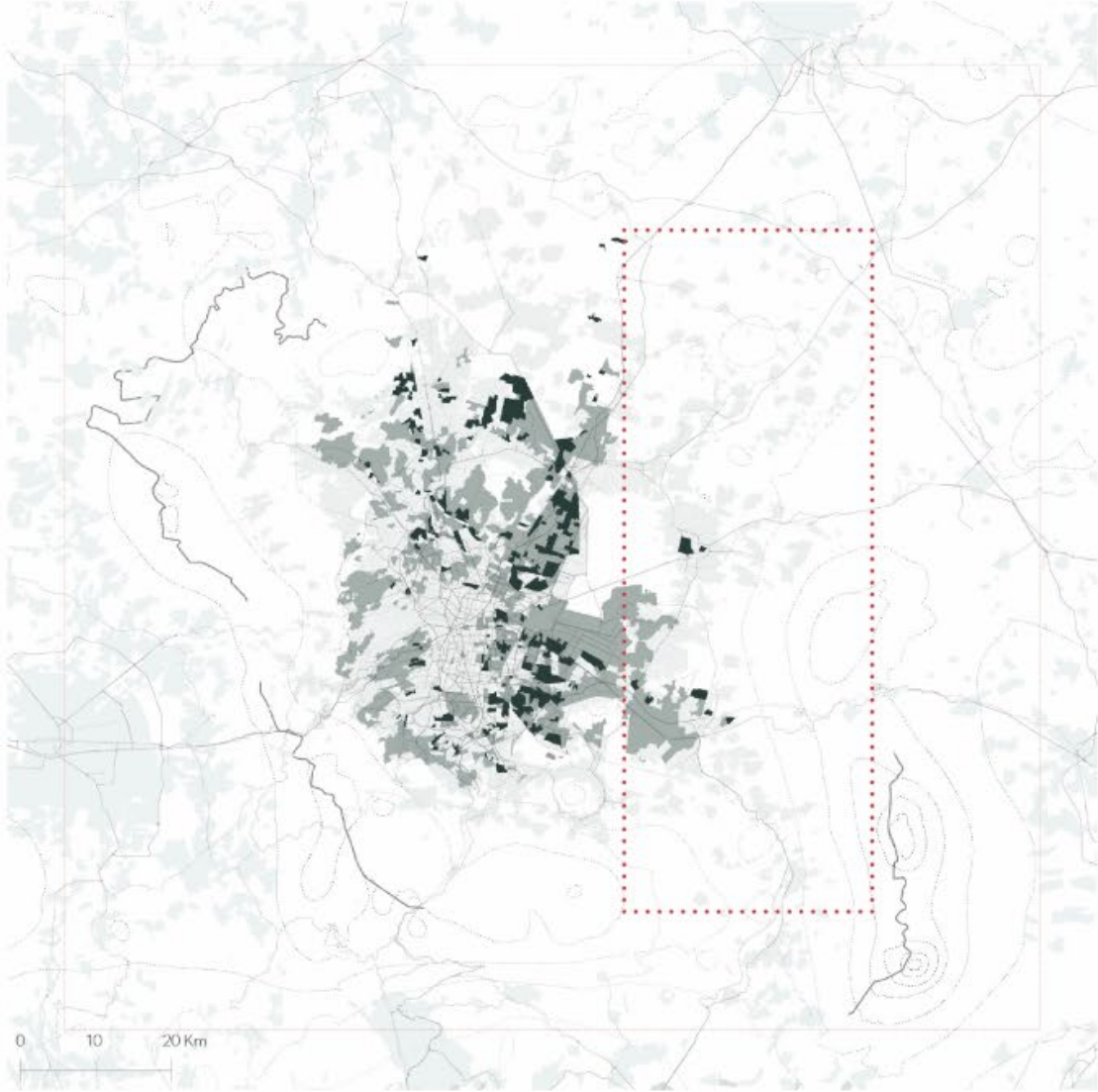
Existing social and informal housing developments

Social and informal housing

- Informal housing
- Social housing



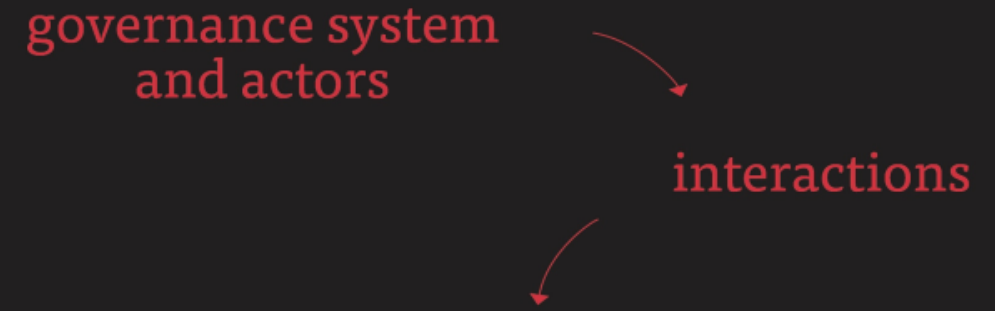
Meso-scale



Iteration 1



Iteration 1



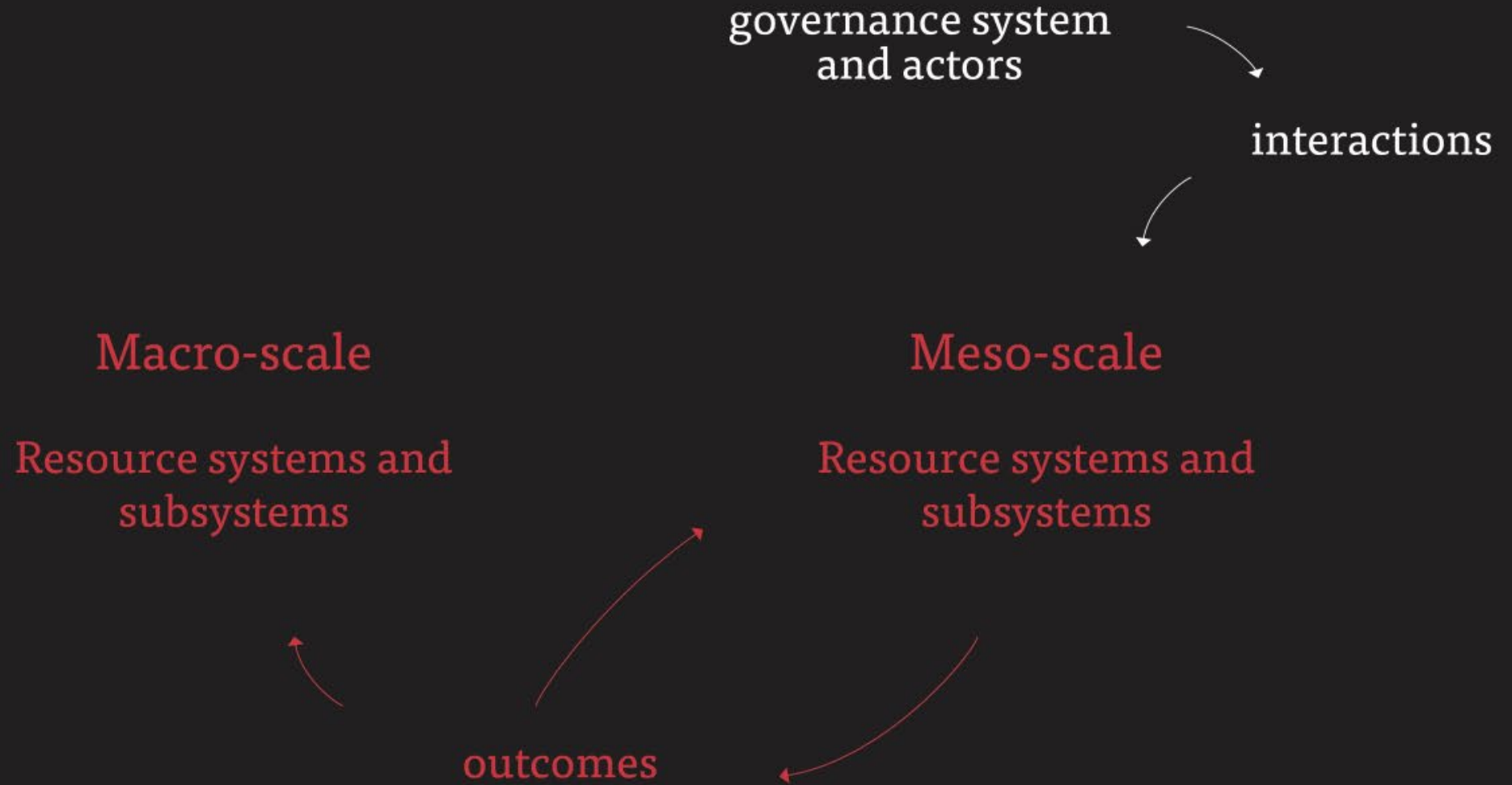
Macro-scale

Resource systems and
subsystems

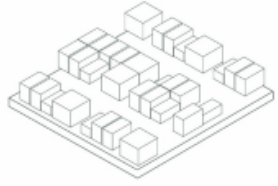
Meso-scale

Resource systems and
subsystems

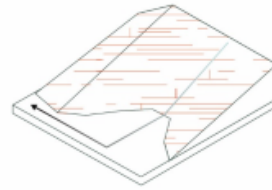
Iteration 1



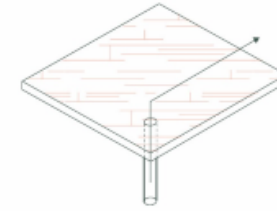
Current interactions



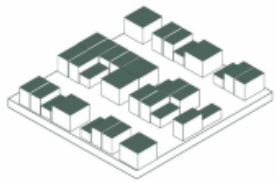
*Developments of social housing
far from employment centers*



Runoff to discharge

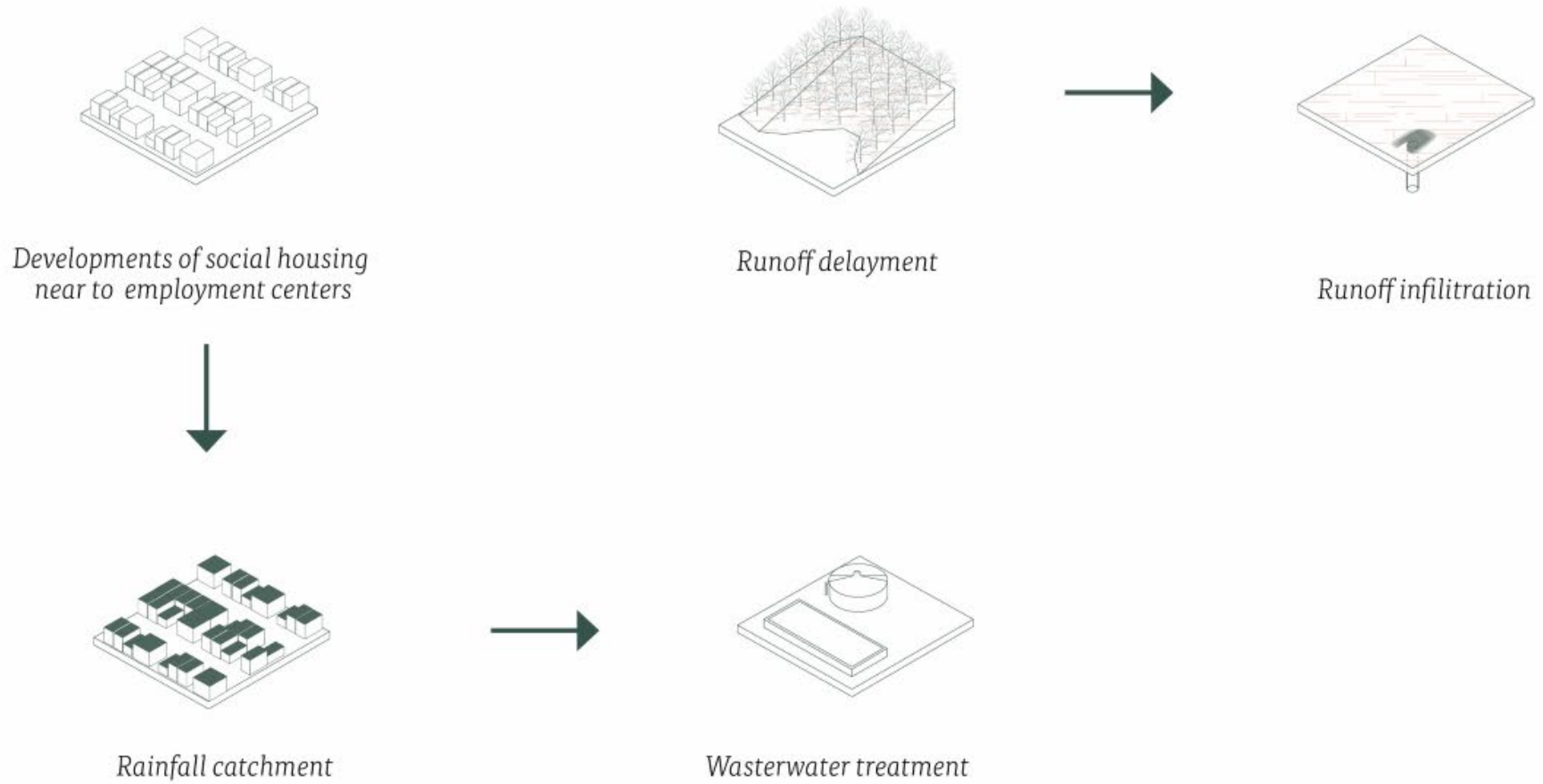


Groundwater extraction

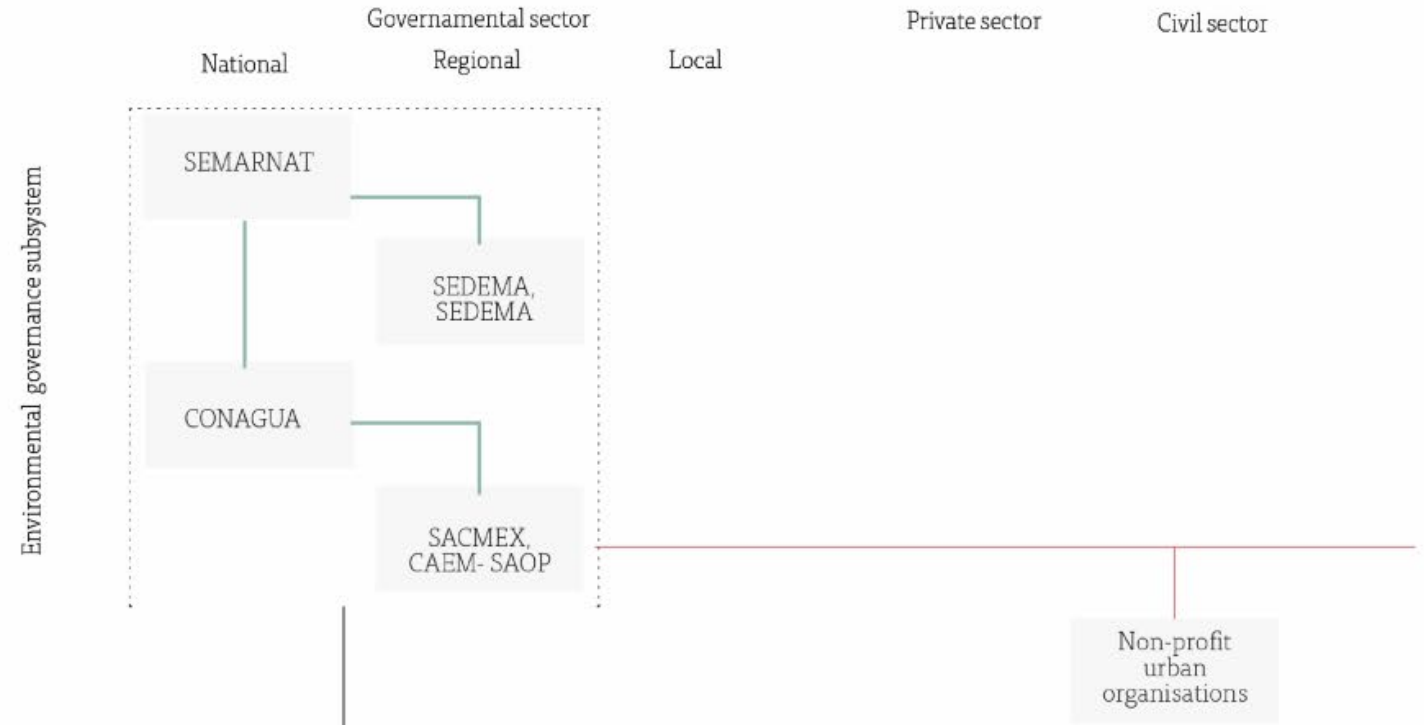
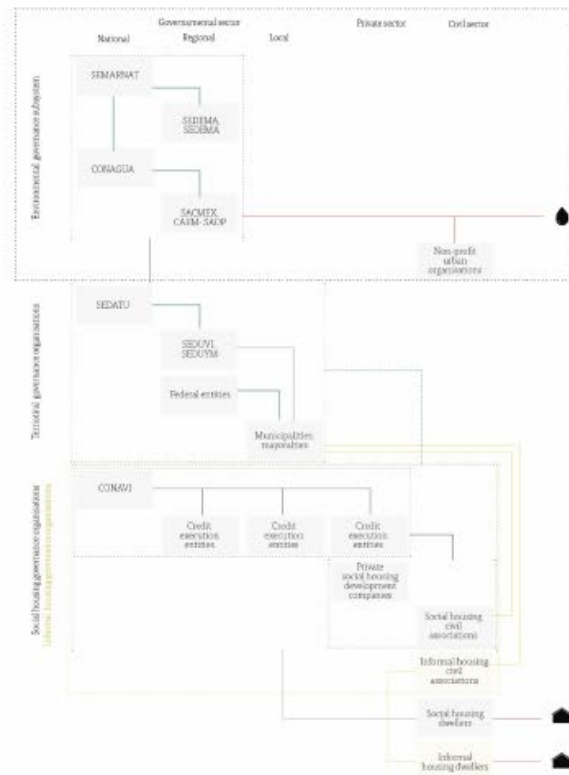


Rainfall catchment

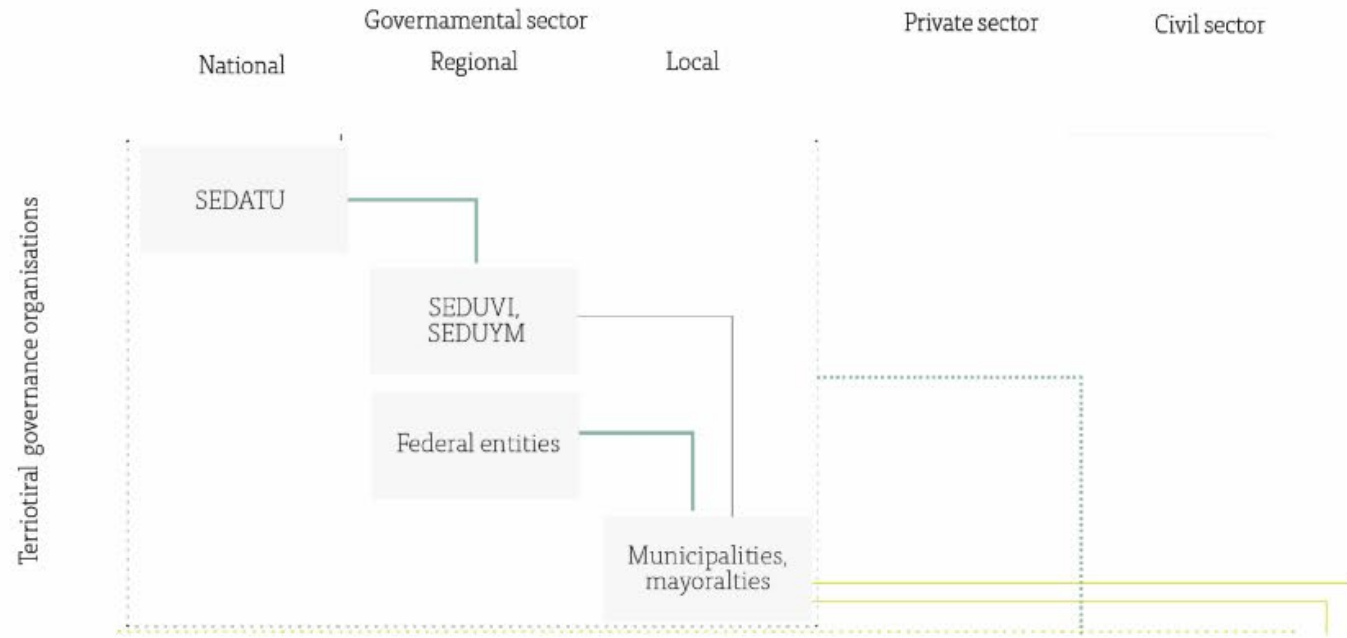
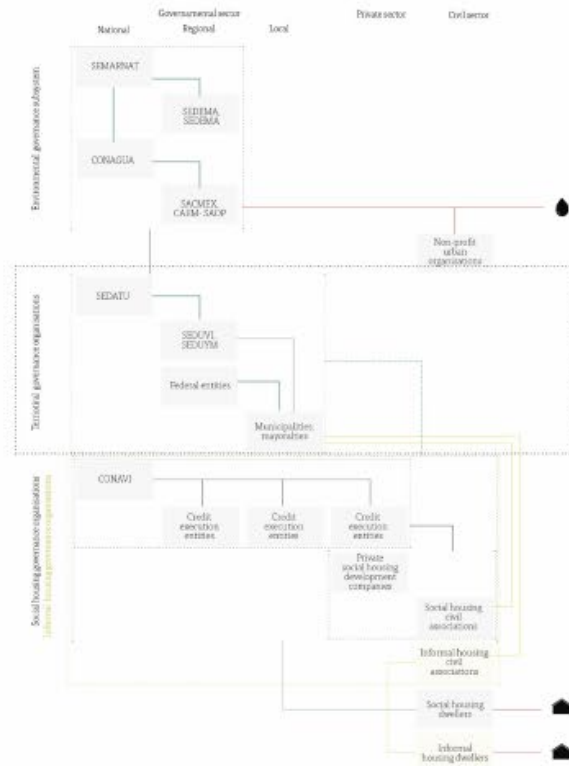
Alternative interactions



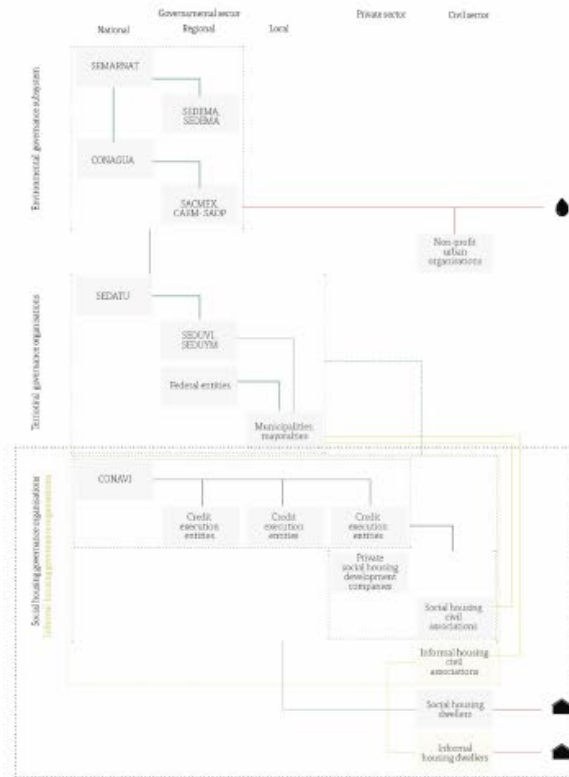
Governance system and actors



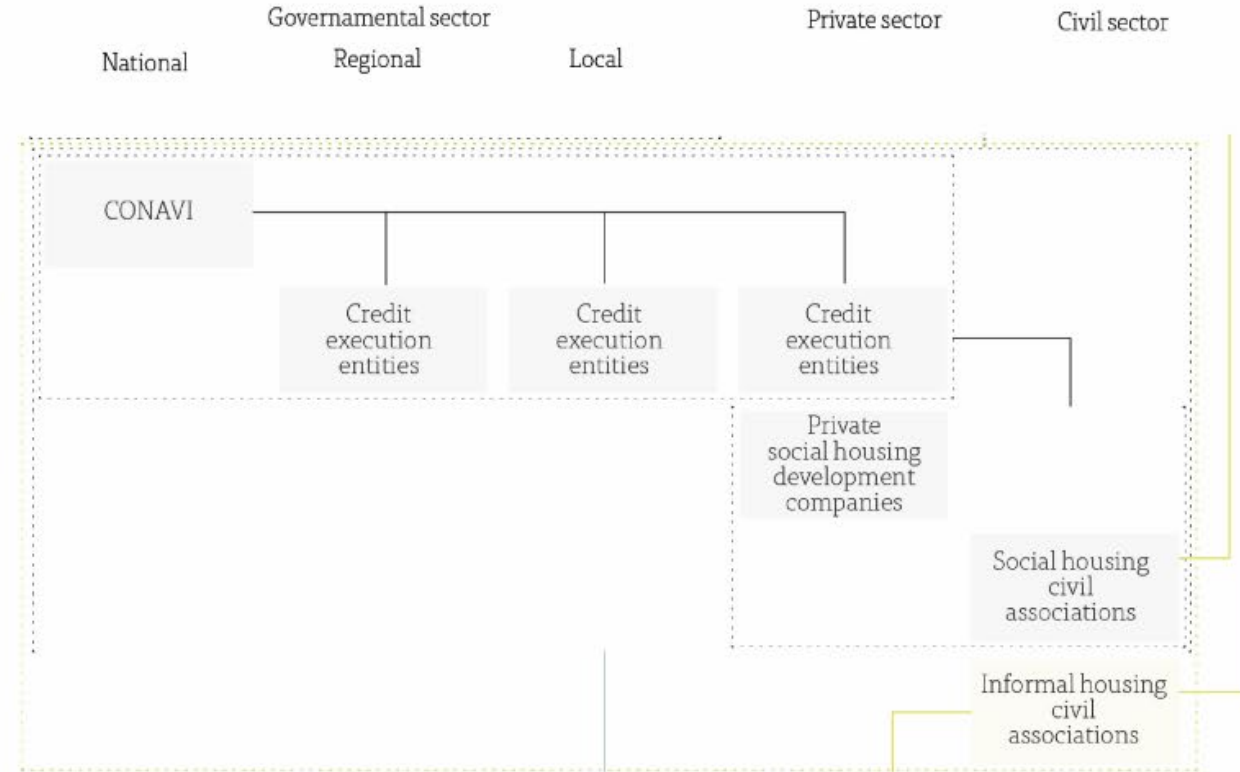
Governance system and actors



Governance system and actors



Social housing governance organizations
Informal housing governance organizations



Outcomes

Social performance

- Accessibility to services
- Accessibility to infrastructure

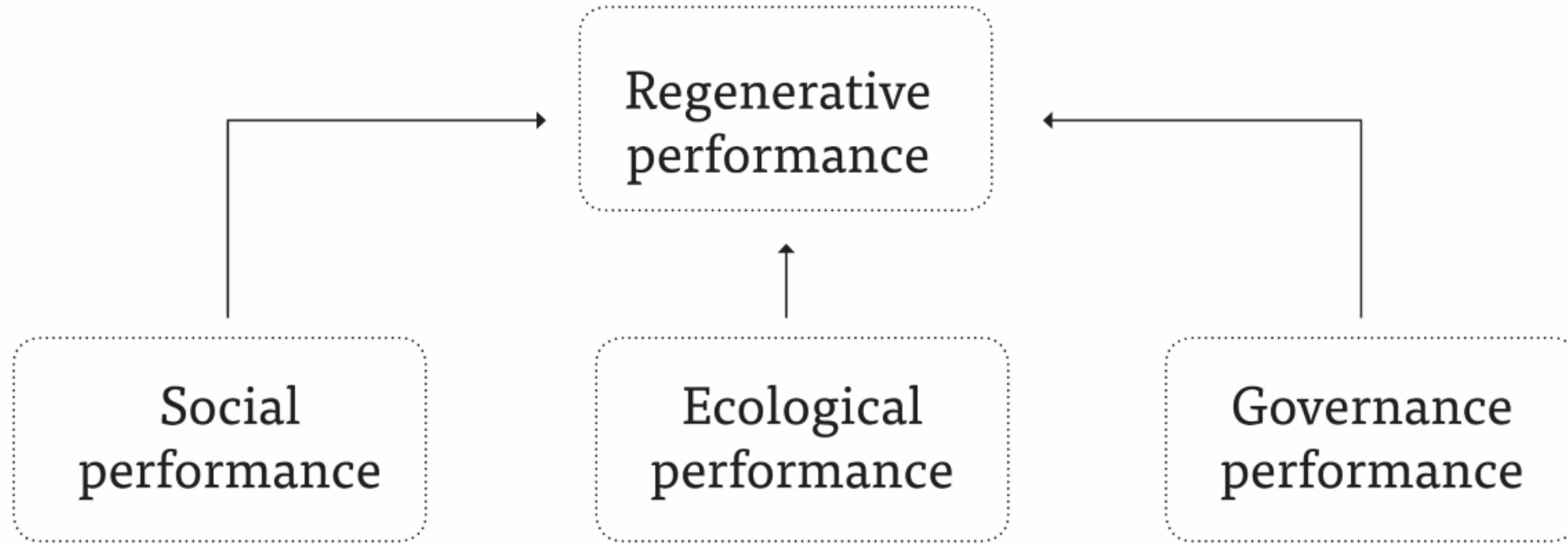
Ecological performance

- Infiltration and extraction rates balance

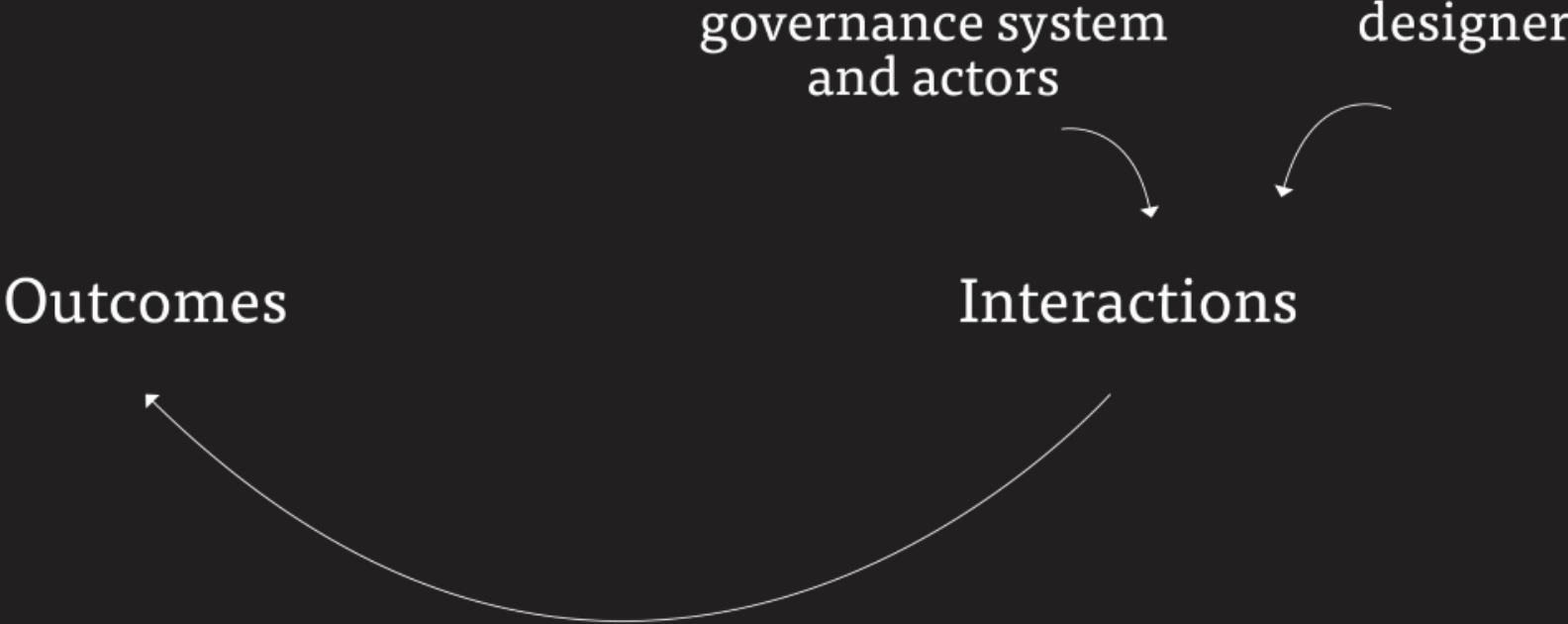
Governance performance

- Knowledge on regeneration
- Engagement in regeneration
- Strength of the actors network

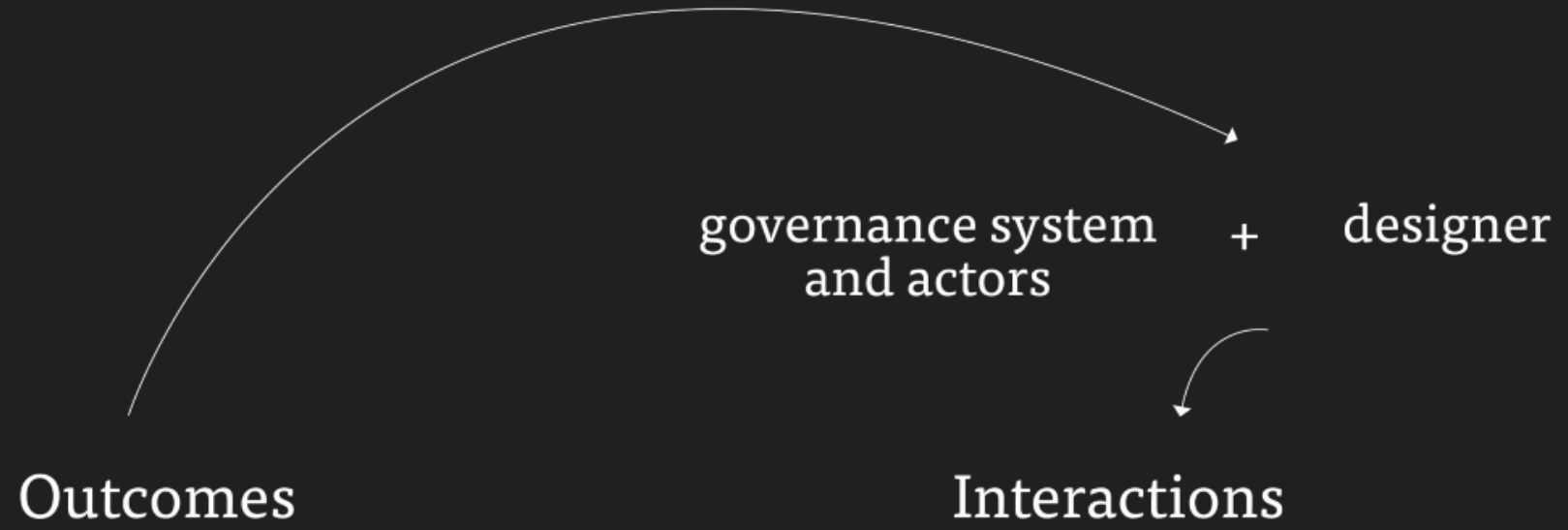
Outcomes



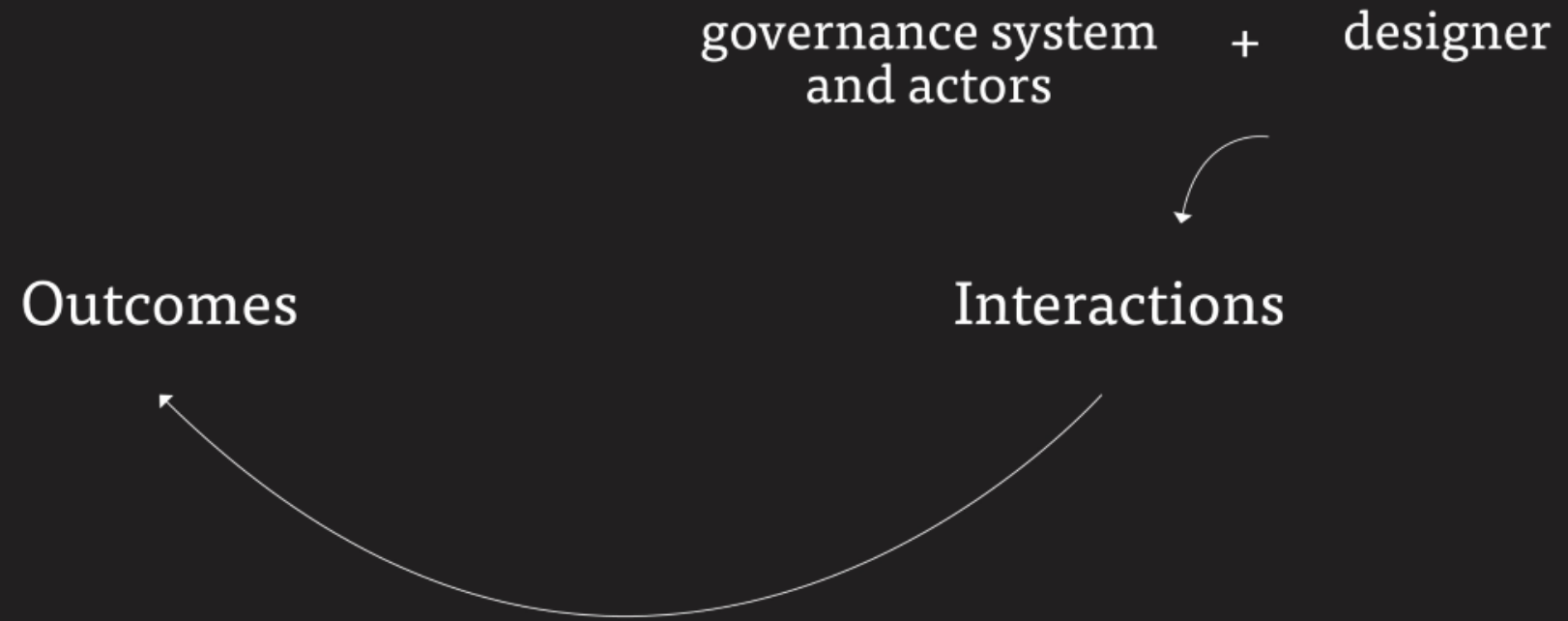
Iteration 3



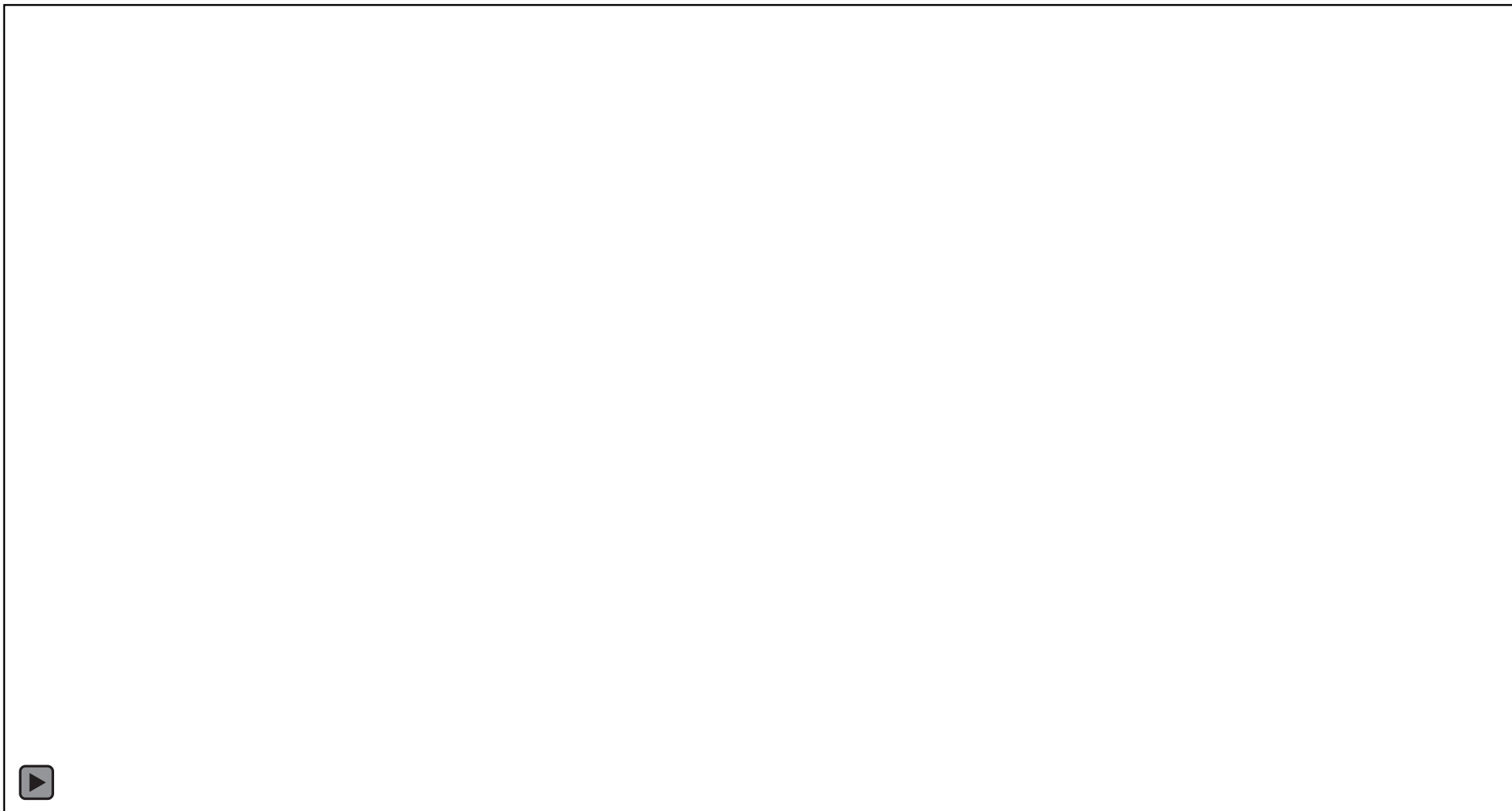
Iteration 3



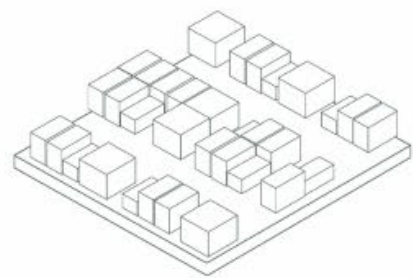
Iteration 3



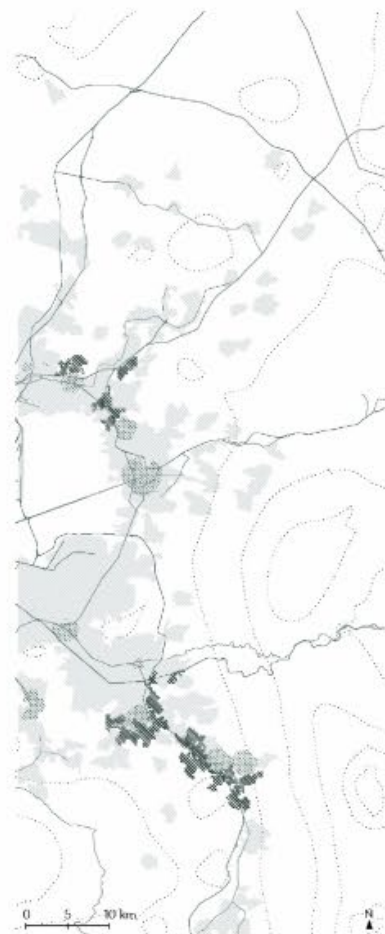
Agent-based modelling tool



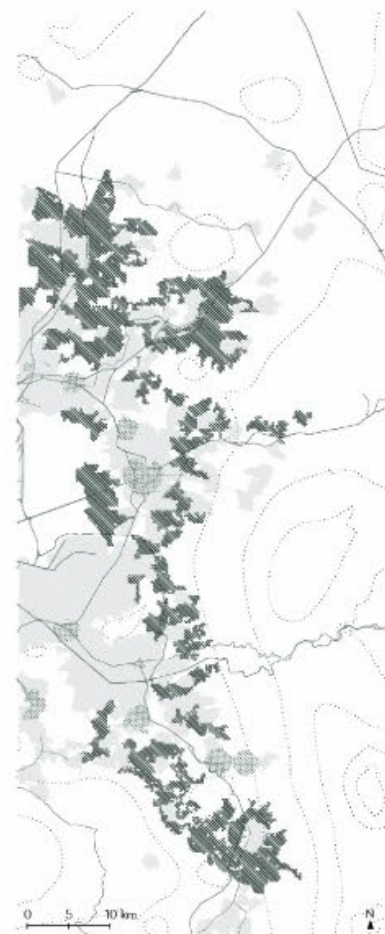
Catalogue



Development of social housing



Zone 1

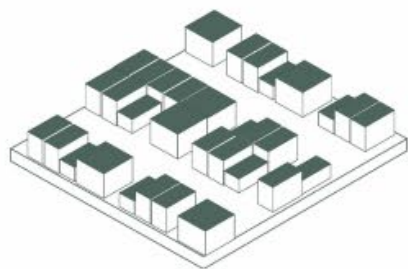


Zone 2

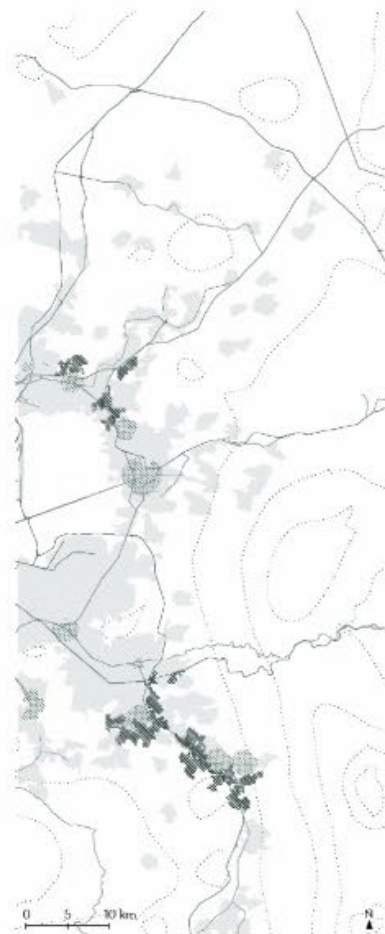


Zone 3

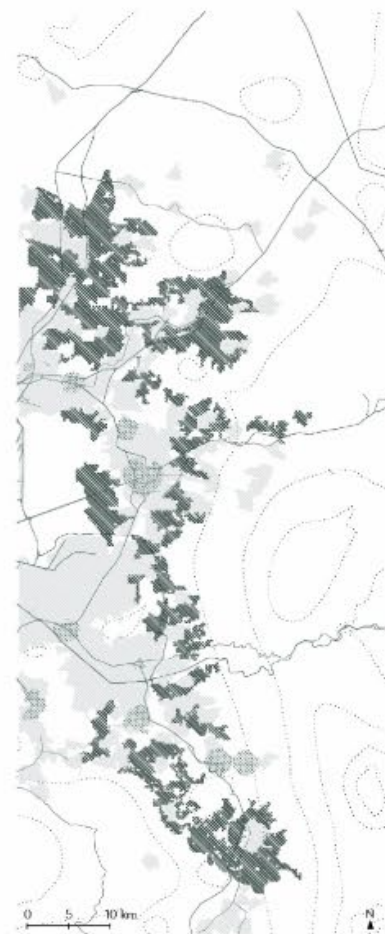
Catalogue



Catchment of rainwater



Zone 1

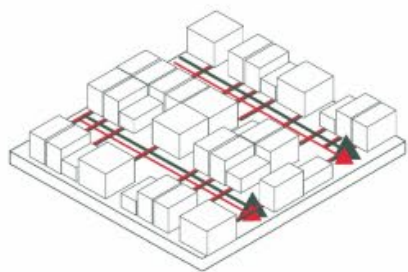


Zone 2

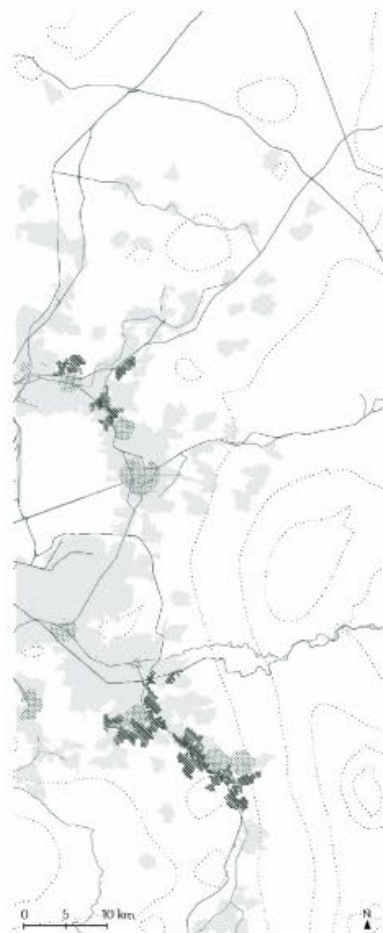


Zone 3

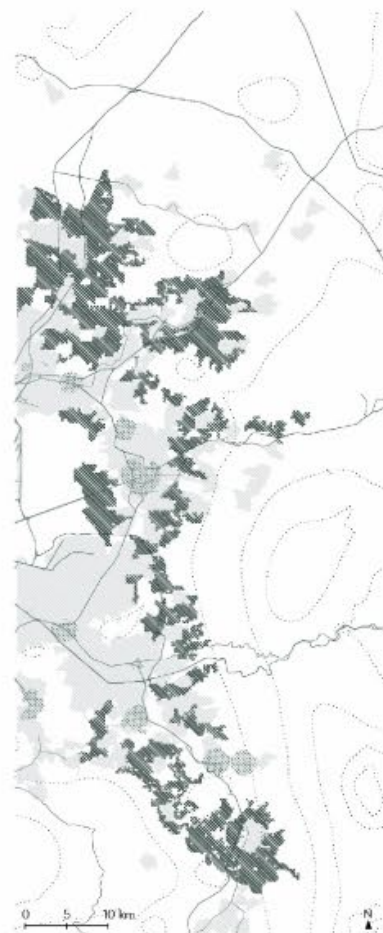
Catalogue



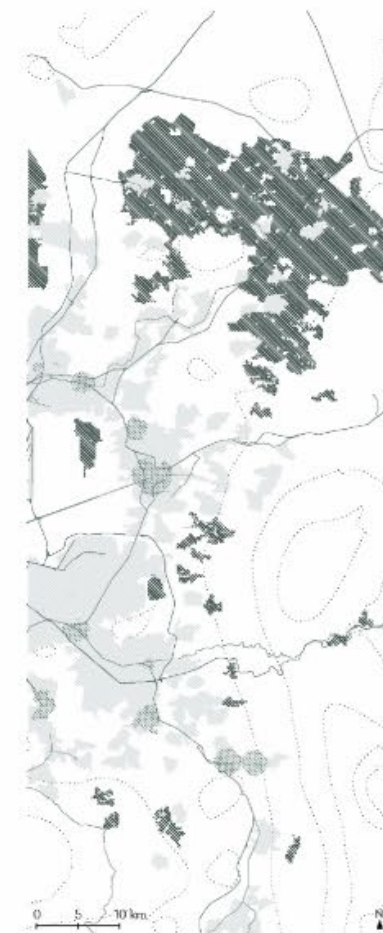
Separation of wastewater



Zone 1

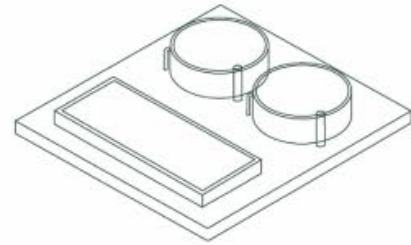


Zone 2

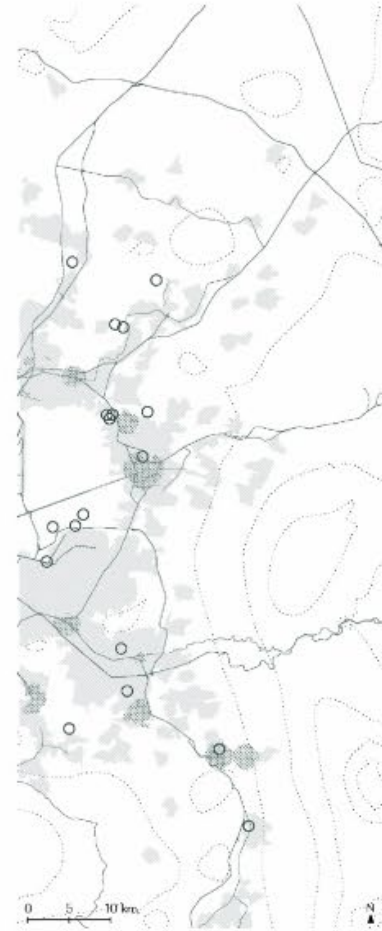


Zone 3

Catalogue

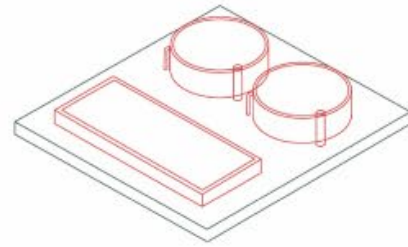


*Treatment of
wastewater in existing WTP*



Existing WTP

Catalogue

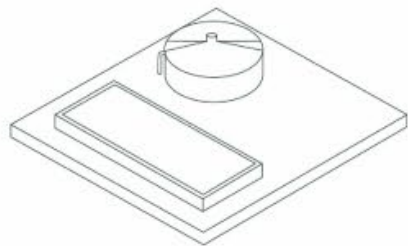


*Treatment of
wastewater in improved WTP*

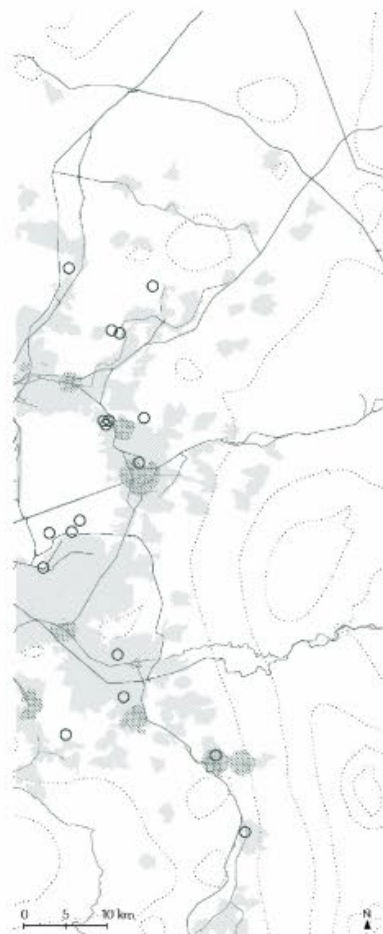


Existing WTP

Catalogue



Treatment of wastewater in WTP
turned to anaerobic



Existing WTP

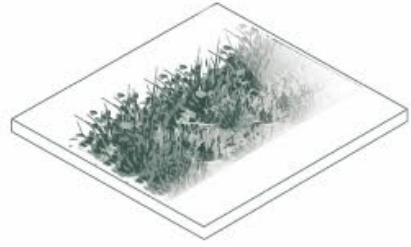


New WTP

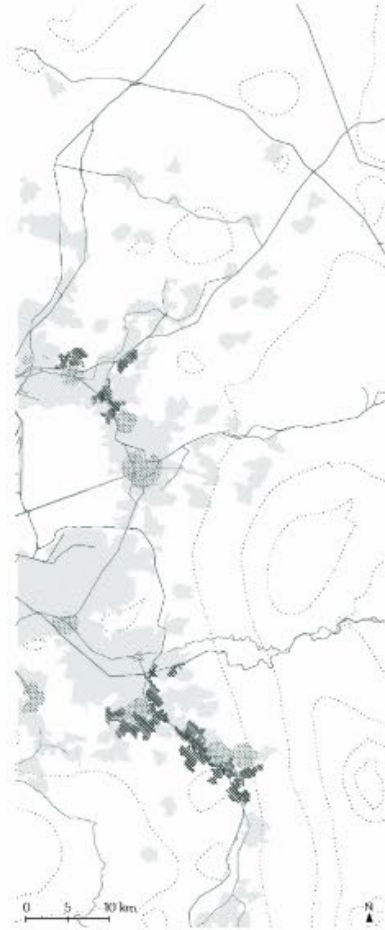


New WTP

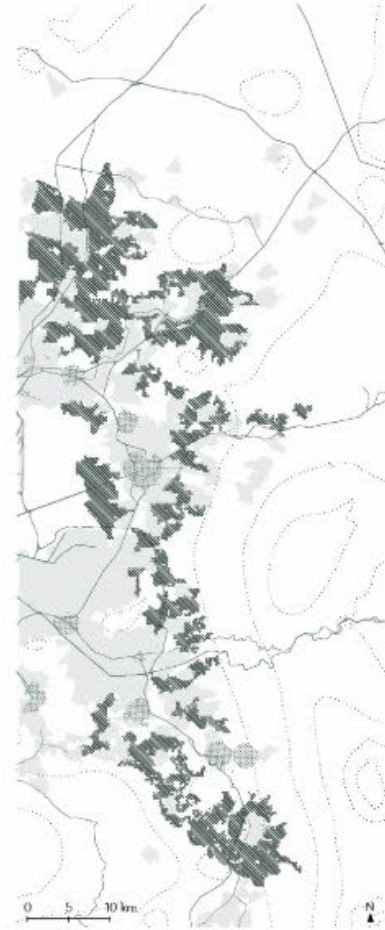
Catalogue



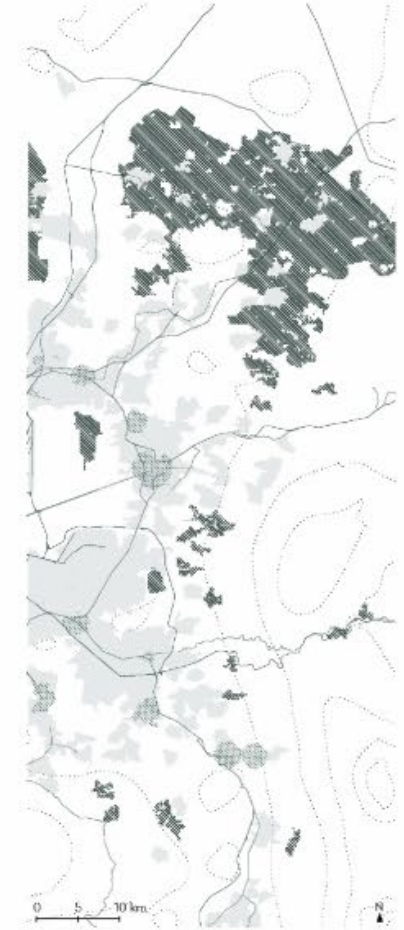
Treatment of greywater in wetlands



Zone 1

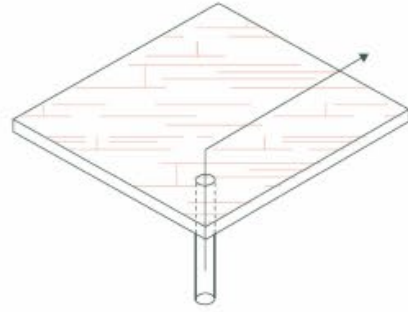


Zone 2

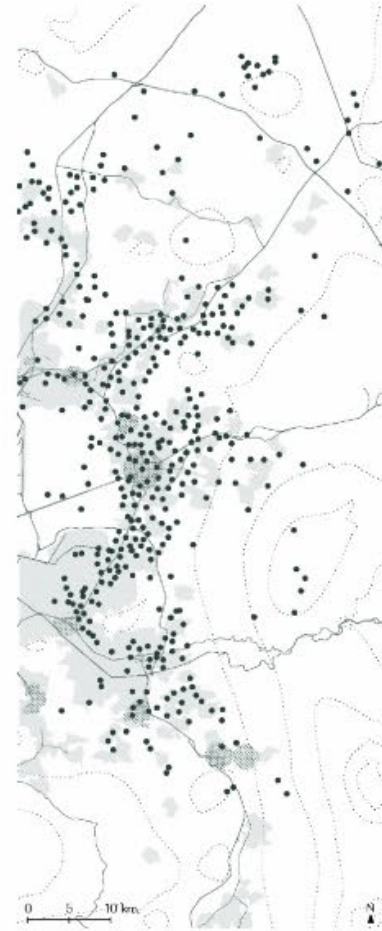


Zone 3

Catalogue

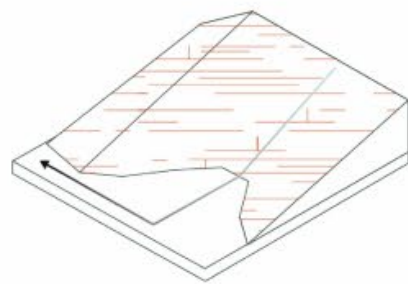


Groundwater extraction



Extraction wells

Catalogue

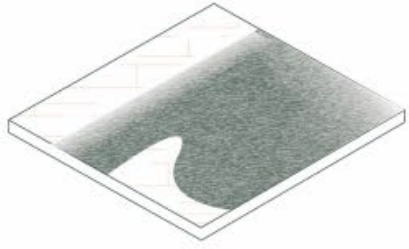


Runoff to discharge

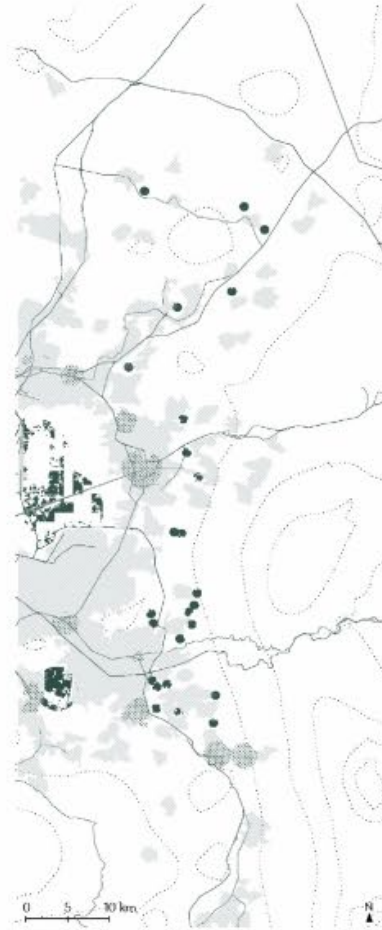


Sewage network

Catalogue



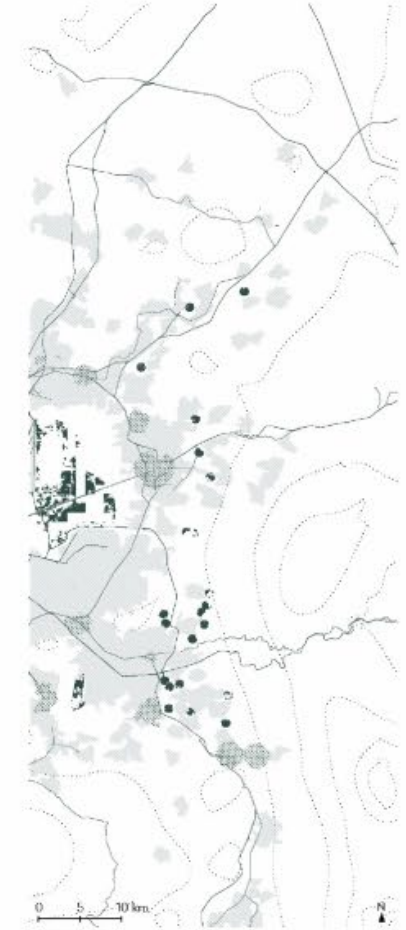
Infiltration of water in lagoons



New lagoons

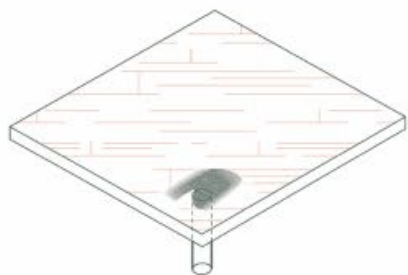


New lagoons (minus Z2)



New lagoons (minus Z3)

Catalogue



Infiltration of water in wells



New wells

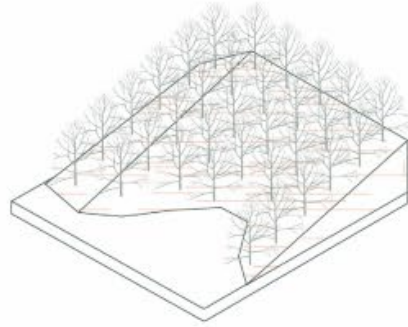


New wels (minus Z2)

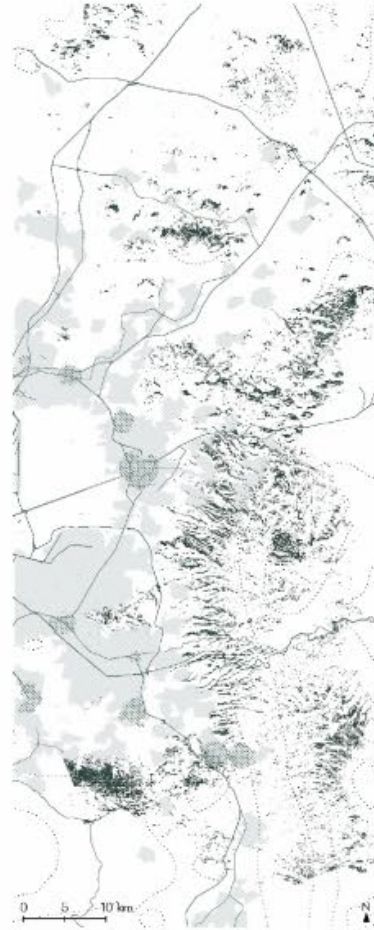


New wells (minus Z3)

Catalogue



*Delayment and infiltration of
runoff with vegetation*

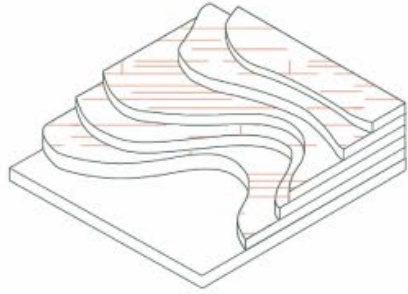


Low slopes

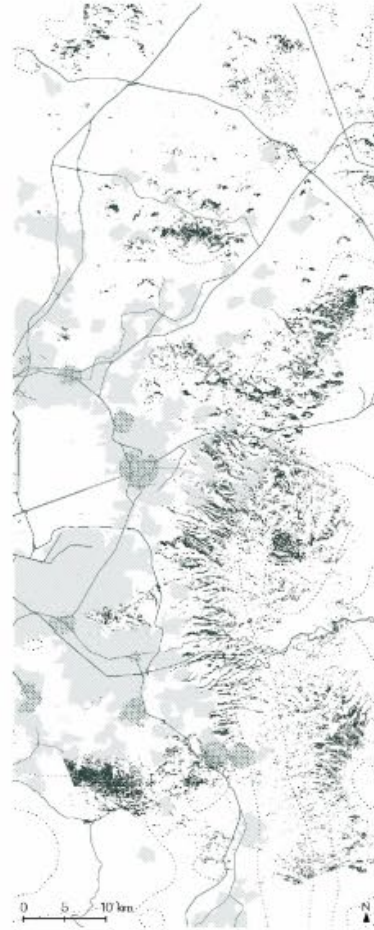


High slopes

Catalogue



*Delayment and infiltration of
runoff with terraces*

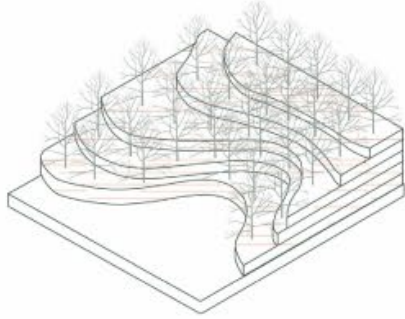


Low slopes

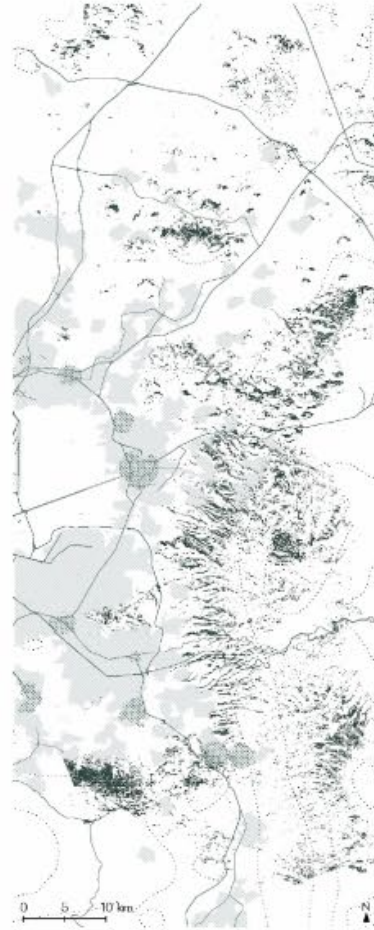


High slopes

Catalogue



Delayment and infiltration of runoff with vegetation and terraces

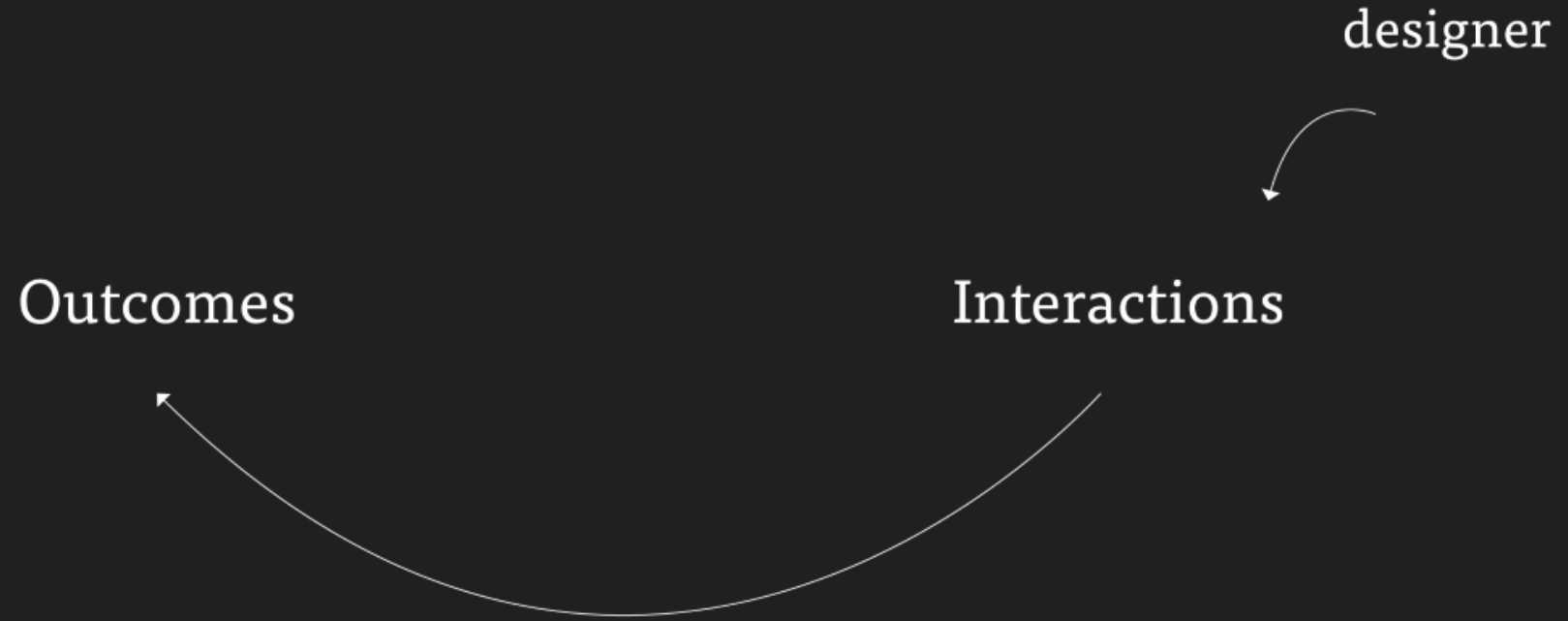


Low slopes



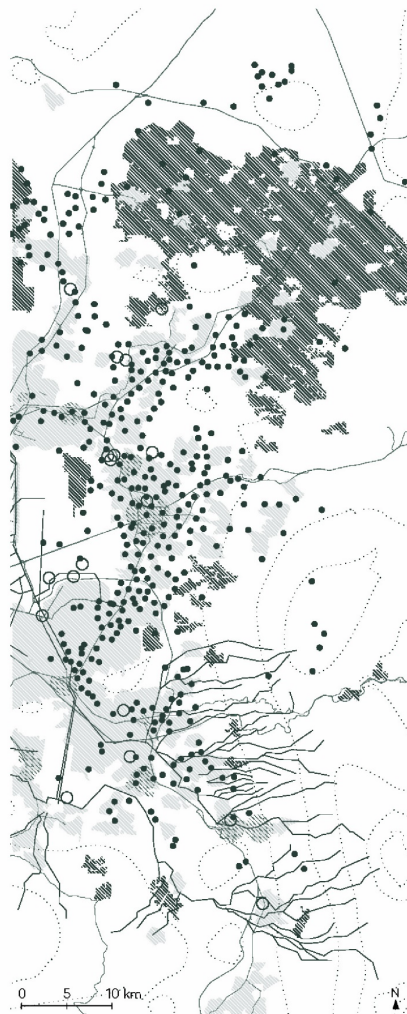
High slopes

Iteration 3-sub-iteration 2



Designer's Business-As-Usual Scenario (Process Model)

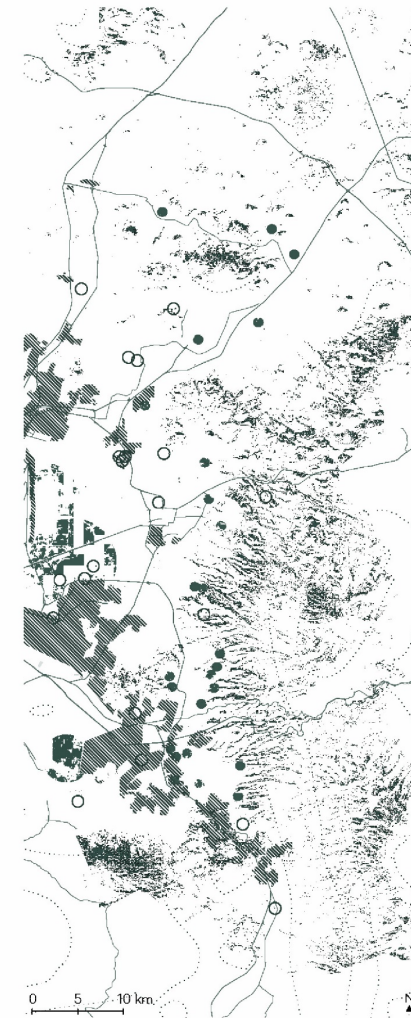
- Development in Zone 3
- Existing WTP
- New anaerobic WTP
- Increase of extraction



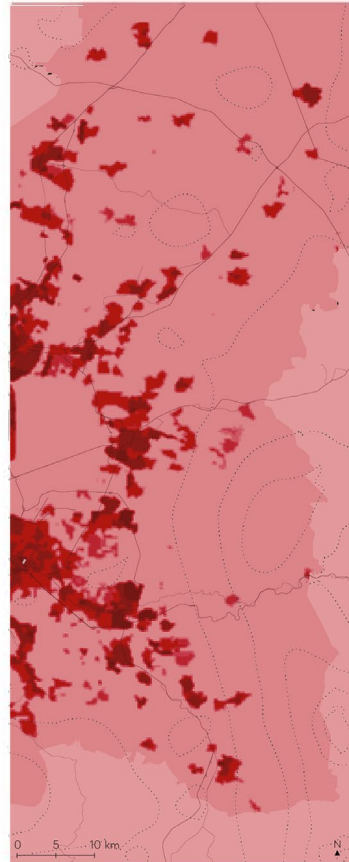
- Urban water system**
- Future housing development
 - WTP
 - Extraction wells
 - Infiltration areas
 - Employment centers
 - Built environment
 - Primary street network

Designer's Regenerative Development Scenario (Change Model)

- Development in Zone 1
- Rainwater catchment in ISH
- Rainwater catchment in Z1
- Source separation in Z1
- Wetlands ISH
- Infiltration lagoons
- Vegetation and terraces



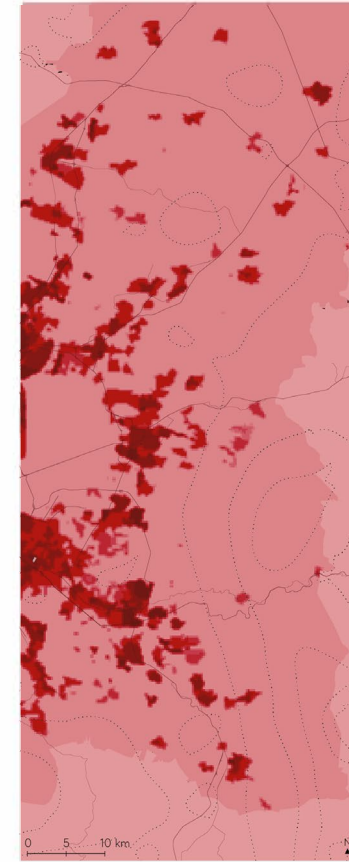
Designer's Business-As-Usual Scenario



2020

Social-ecological performance

Designer's Regenerative Development Scenario

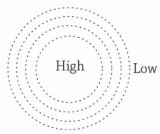


2020

Social-ecological performance

Stakeholders' Business-As-Usual Scenario (Process Model)

RD engagement



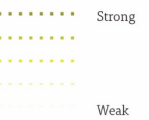
RD knowledge



Ad-hoc



Indirect relation

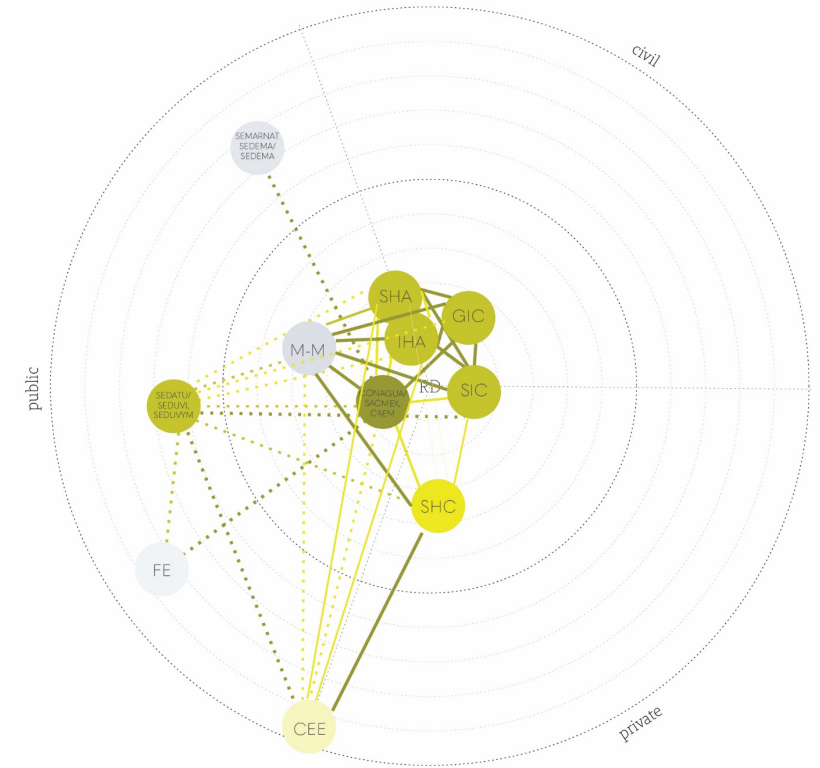


- M-M Local governments
- FE Federal entites governments
- SHC Social housing companies
- SHA Social housing associations
- IHA Informal housing associations
- GIC Green impact companies
- SIC Social impact companies



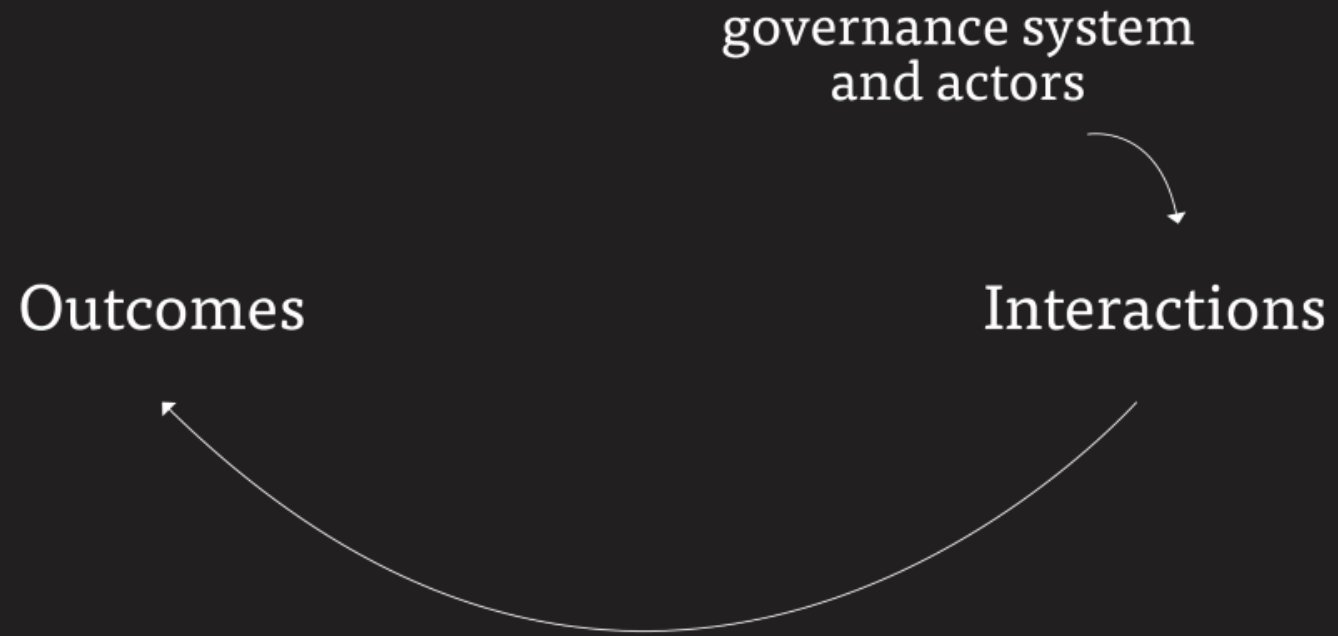
Governance performance

Stakeholders' Regenerative Development Scenario (Change Model)




Governance performance

Iteration 3-sub-iteration 3




Workshop



Informal housing associations
Ángelica Barrera
Representative of their interests

SEDATU
Edgar Buenrostro
Territorial ordenance direction at SEDATU

Social housing associations
Anahí Valera
Representative of Flor de Matz associatio



CONAGUA/CAEM
Alan Figot
Role-played

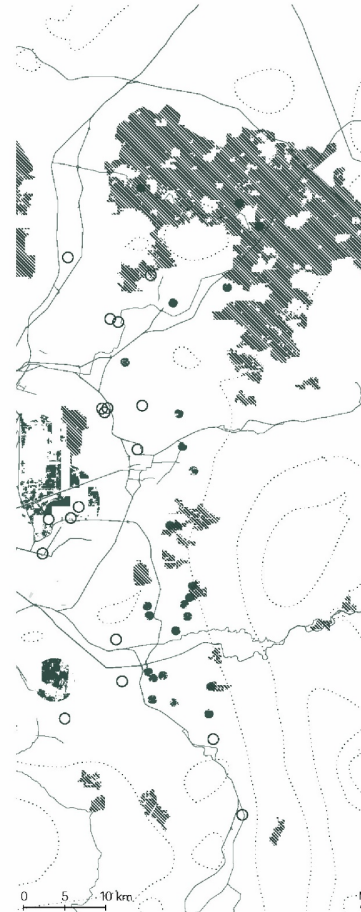
Social impact organisation
Andrea Pliego
Entrepreneur

Federal Credit Society (FCS)/ Social housing developer
Marco Figueroa
Retired from the FCS, developed extensive housing

Ecological impact companies
Enrique Lomnitz
Entrepreneur at Isla Urbana

Stakeholders' Business-As-Usual Scenario (Process Model)

Development in Zone 3
Rainwater catchment Z3
Source separation Z3
Improved WTP
Infiltration wells

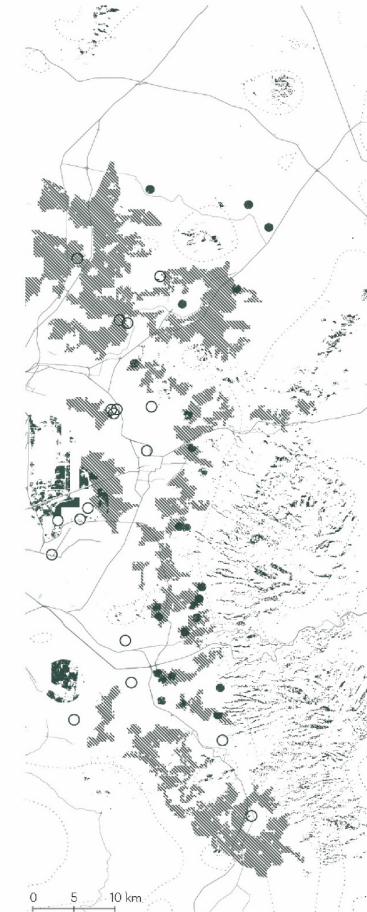


Urban water system

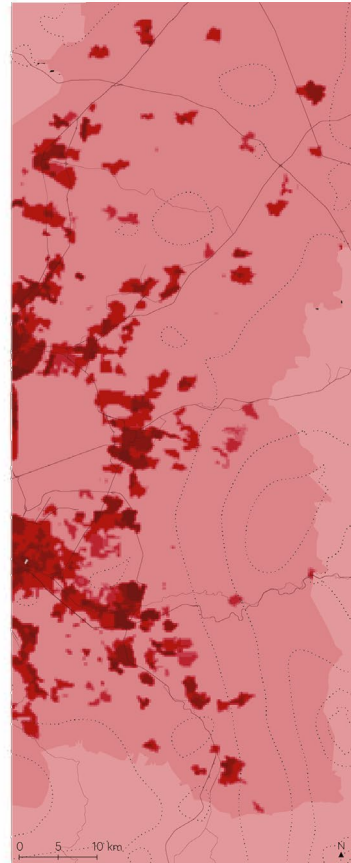
- Future housing development
- WTP
- Extraction wells
- Infiltration areas
- Employment centers
- Built environment
- Primary street network

Stakeholders' Regenerative Development Scenario (Change Model)

Development in Zone 2
Rainwater catchment Z2
Improved WTP
Wetlands Z2
Infiltration wells
Vegetation in high slopes



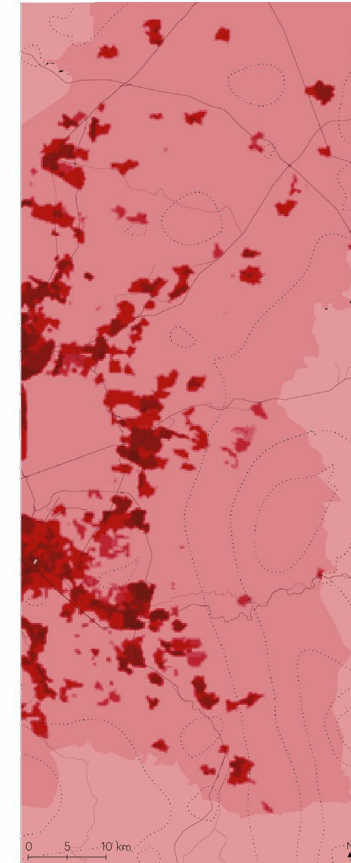
Stakeholders' Business-As-Usual Scenario



2020

Social-ecological performance

Stakeholders' Regenerative Development Scenario

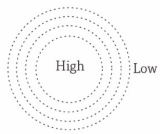


2020

Social-ecological performance

Stakeholders' Business-As-Usual Scenario (Process Model)

RD engagement



RD knowledge



Ad-hoc



Indirect relation

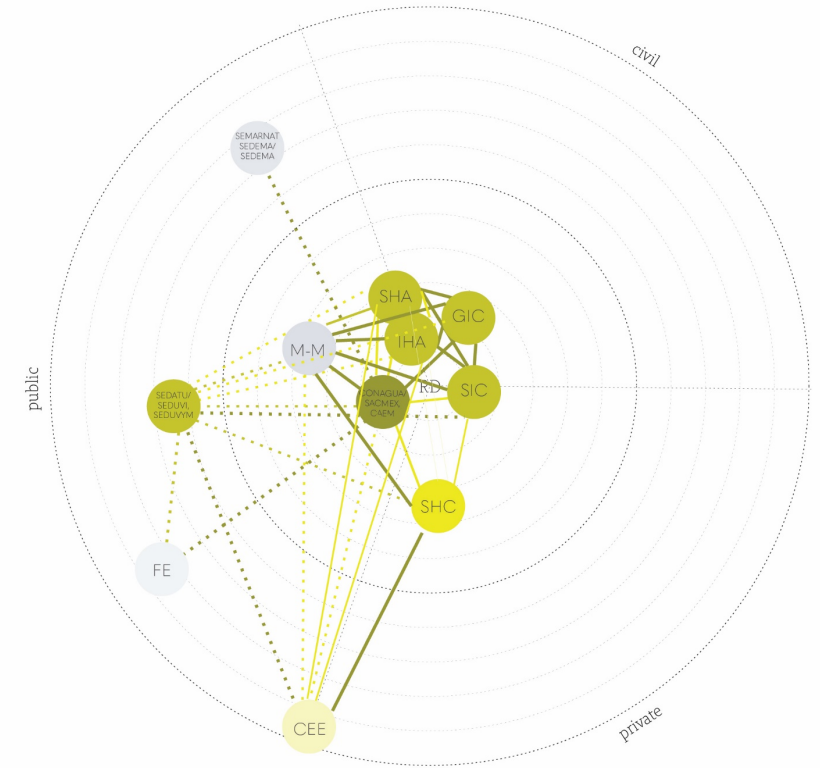


- M-M Local governments
- FE Federal entites governments
- SHC Social housing companies
- SHA Social housing associations
- IHA Informal housing associations
- GIC Green impact companies
- SIC Social impact companies



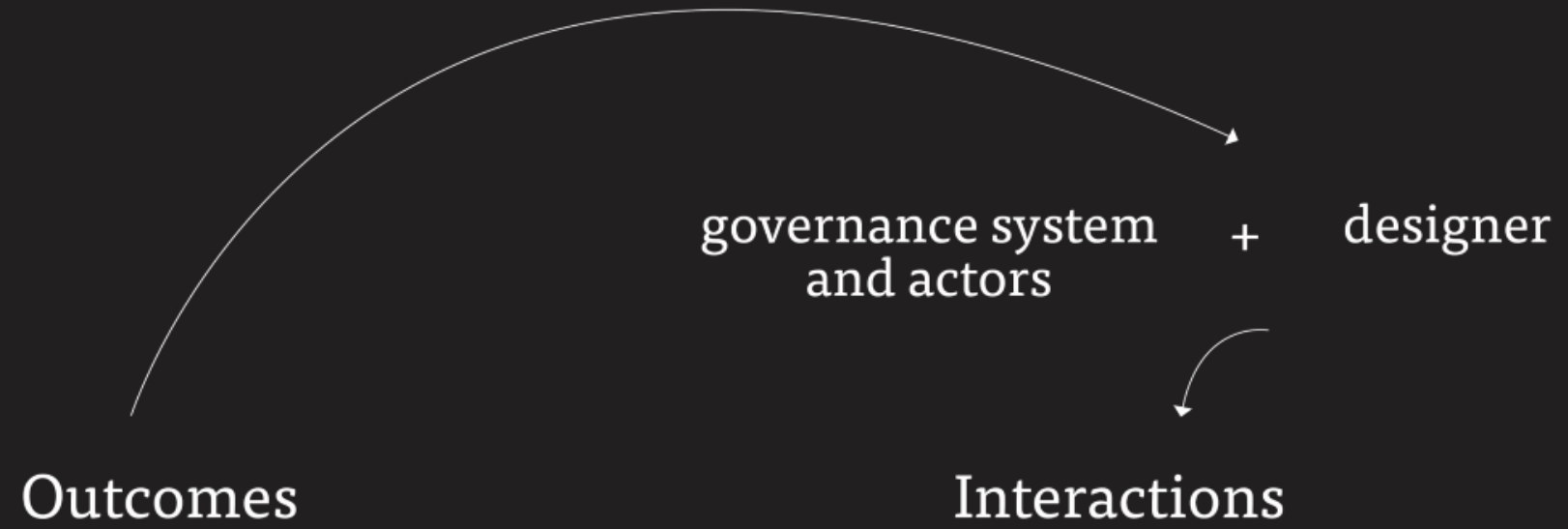
Governance performance

Stakeholders' Regenerative Development Scenario (Change Model)

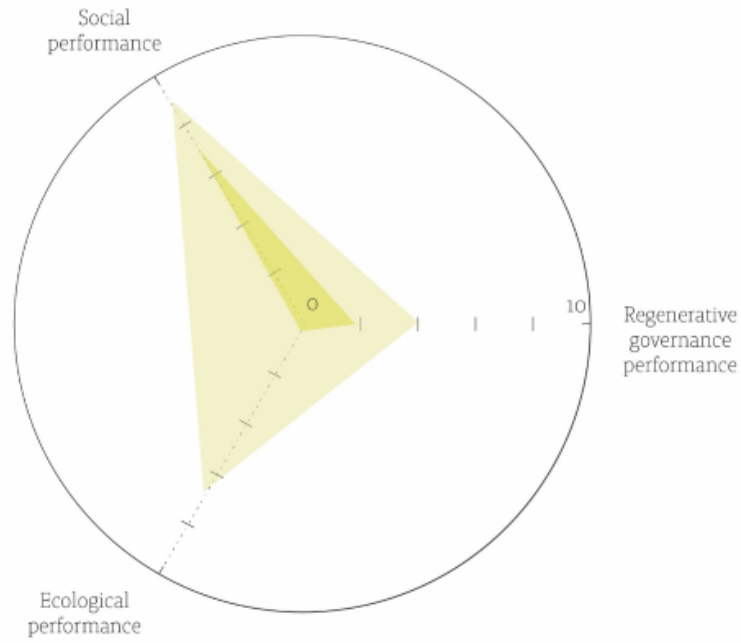


Governance performance

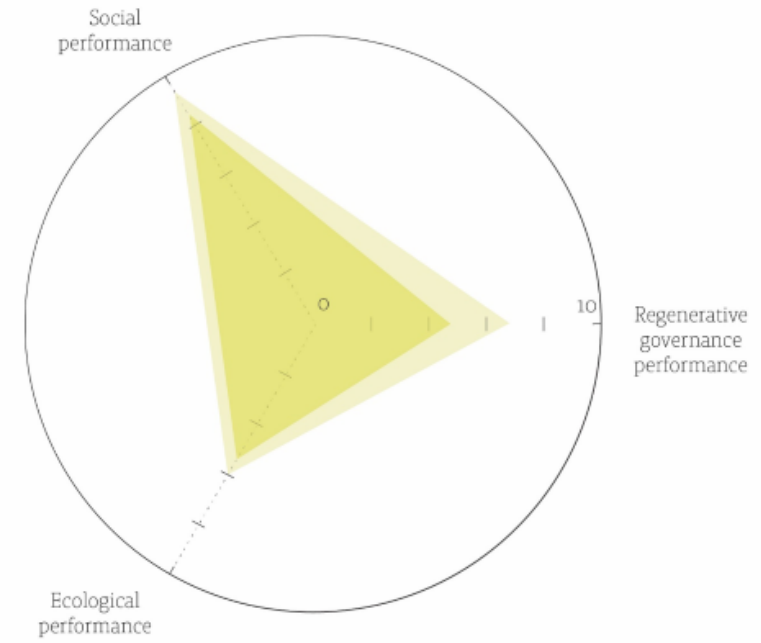
Iteration 3-sub-iteration 4



Performance improvement from the Business-As-Usual to the Regenerative Development Scenarios



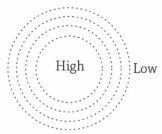
When developed by the researcher



When developed by the stakeholders

Co-planned Regenerative Scenario (Change Model)

RD engagement



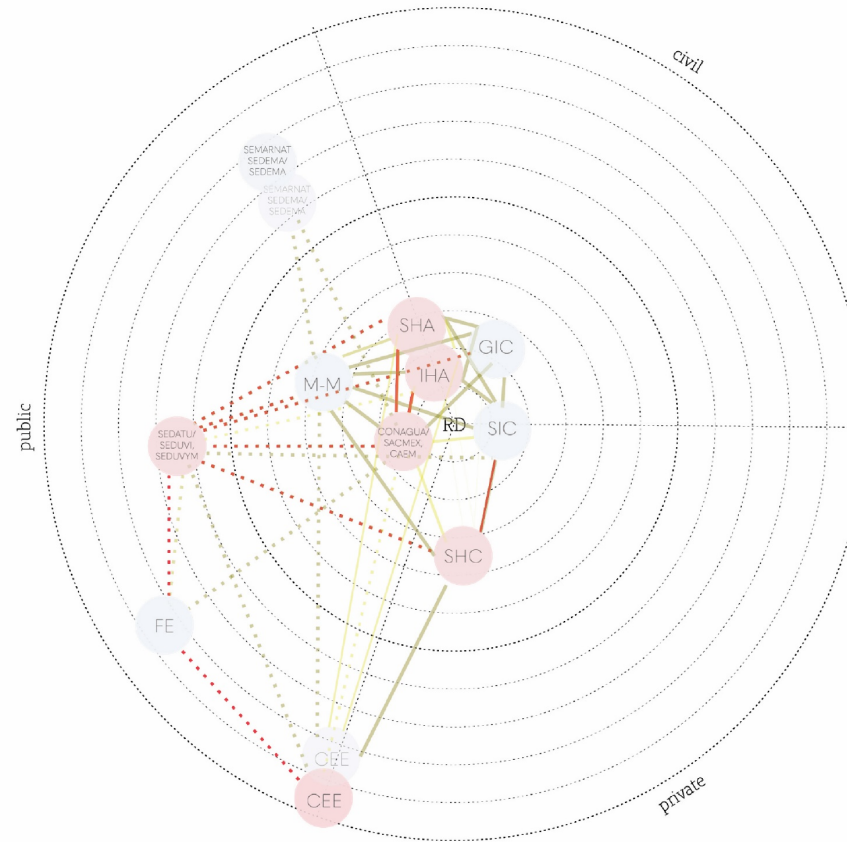
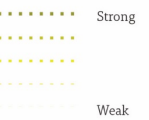
RD knowledge



Ad-hoc



Indirect relation



Governance performance

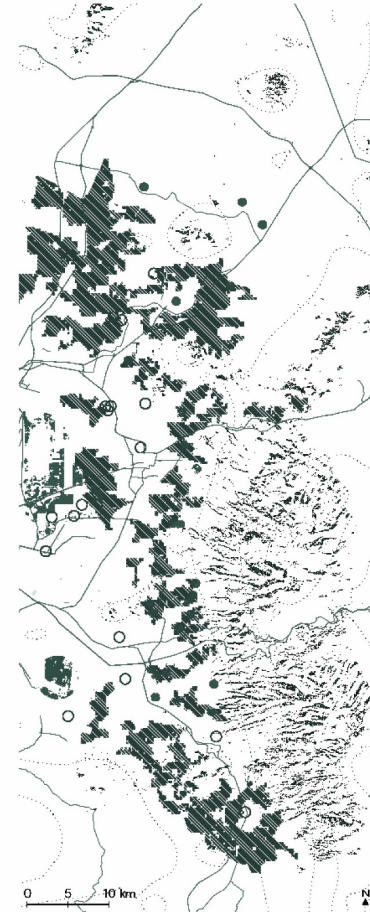
- M-M Local governments
- FE Federal entites governments
- SHC Social housing companies
- SHA Social housing associations
- IHA Informal housing associations
- GIC Green impact companies
- SIC Social impact companies

Co-planned Regenerative Scenario (Change Model)

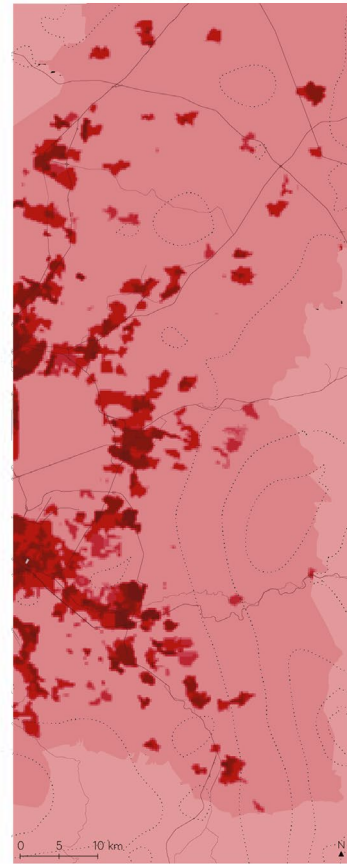
Development in Zone 1
Development in Zone 2
Rainwater catchment in Zone 1
Rainwater catchment in Zone 2
Source separation in Zone 1
Source separation in Zone 2
Anaerobic WTP
New anaerobic WTP
Infiltration lagoons
Vegetation in high slopes
Rainwater catchment in ISH
Wetlands in ISH

Urban water system

- Future housing development
- WTP
- Extraction wells
- Infiltration areas
- Employment centers
- Built environment
- Primary street network



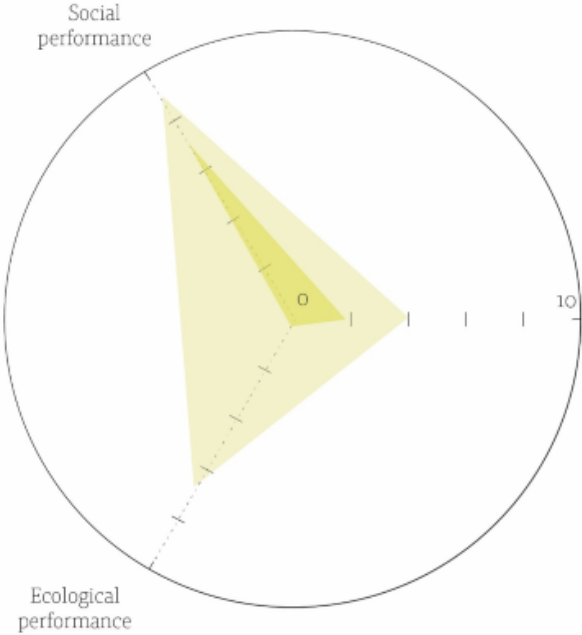
Co-planned Regenerative Scenario



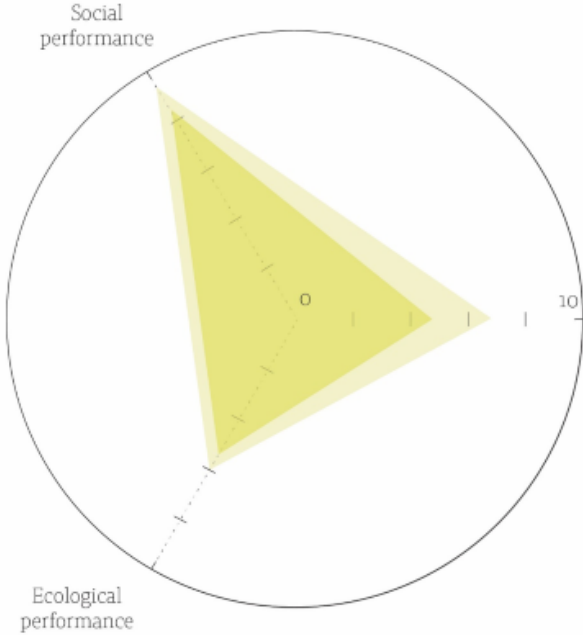
2020

Social-ecological performance

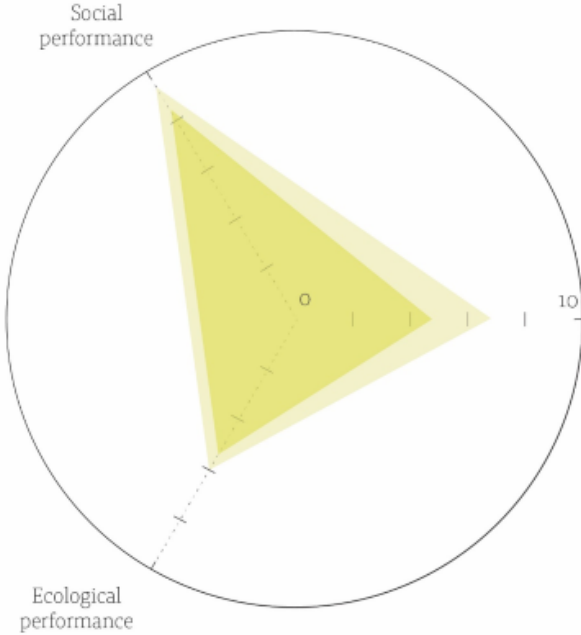
Performance improvement from the Business-As-Usual to the Regenerative Development Scenarios



When developed by the researcher

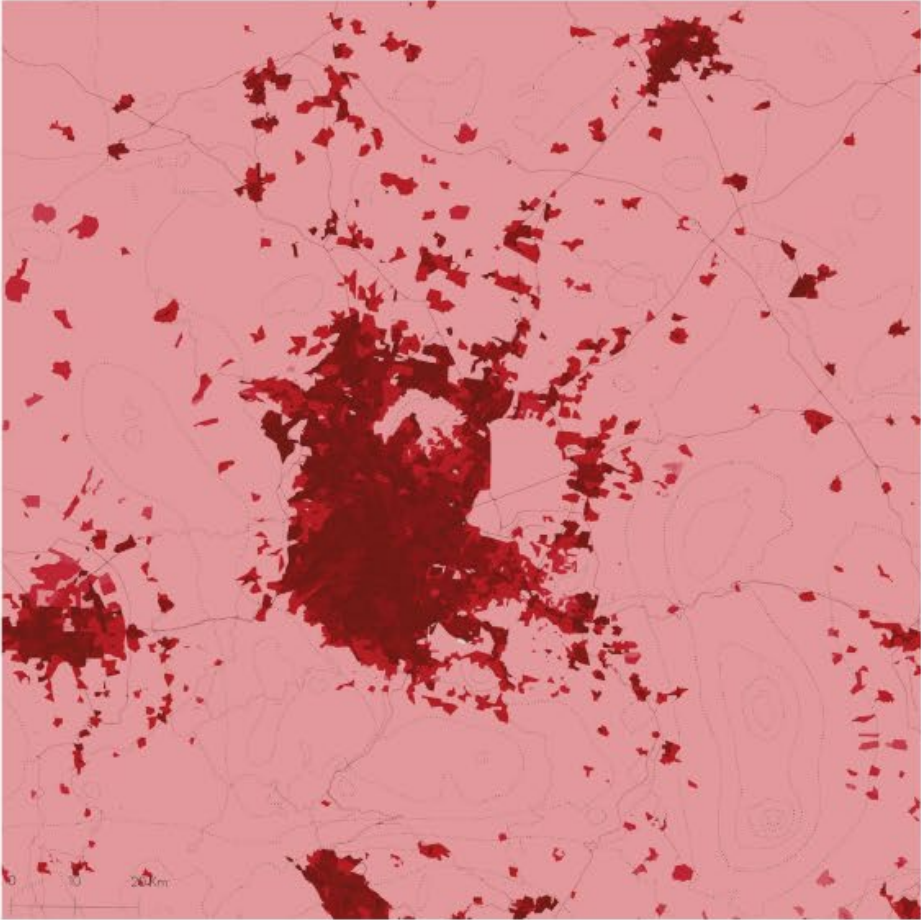


When developed by the stakeholders

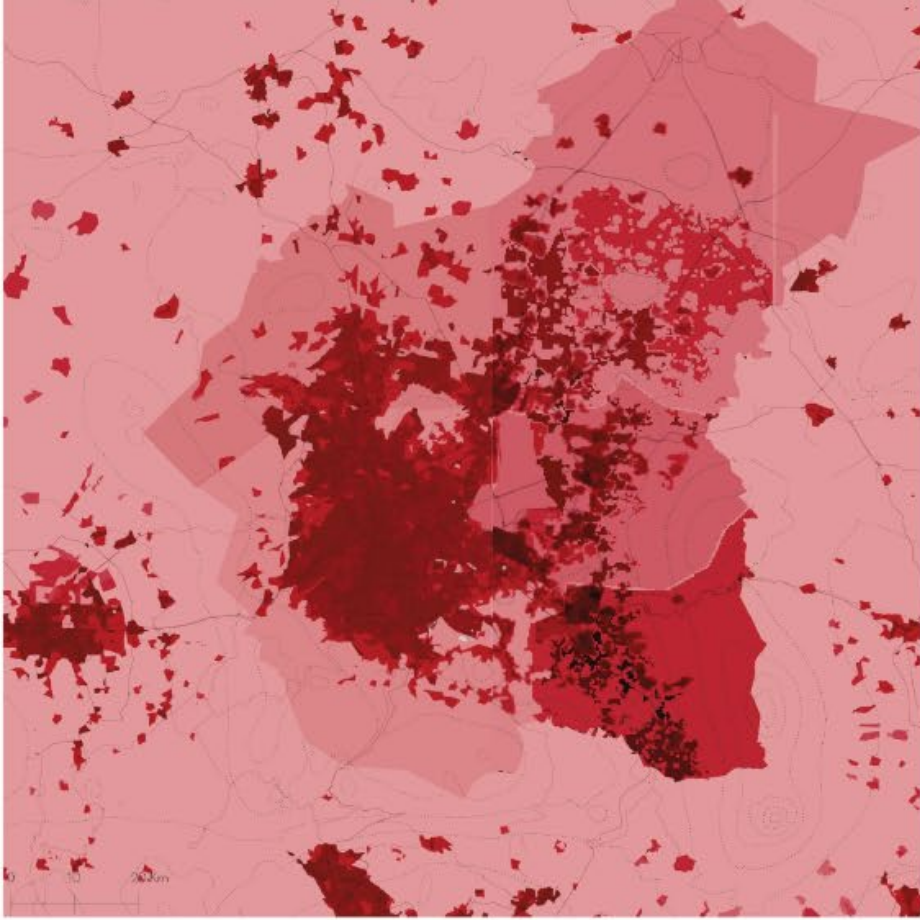


When co-planned

Regeneration in the MAVM



2020



2050

Social-ecological performance





Thank you