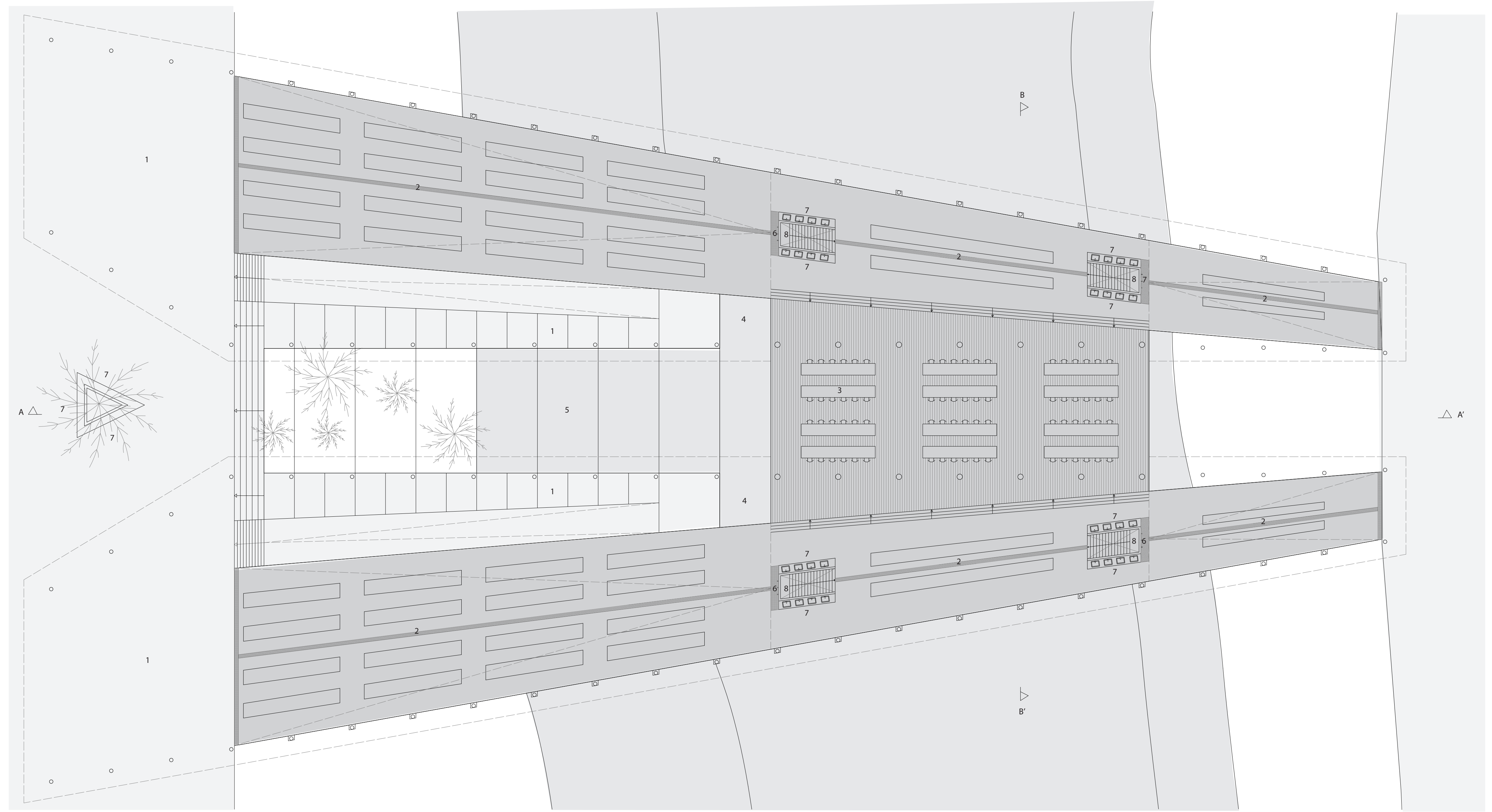


15 m
9 m
11 m
9 m
15 m

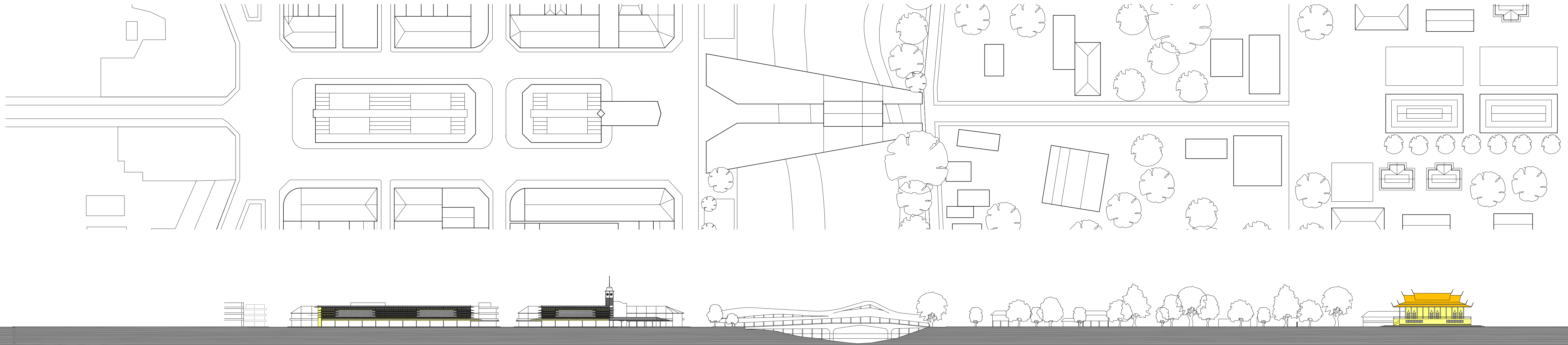
- 1. street market
- 2. work benches
- 3. restaurants
- 4. dock (year round)
- 5. dock (seasonal)
- 6. taps
- 7. washing facility
- 8. toilets

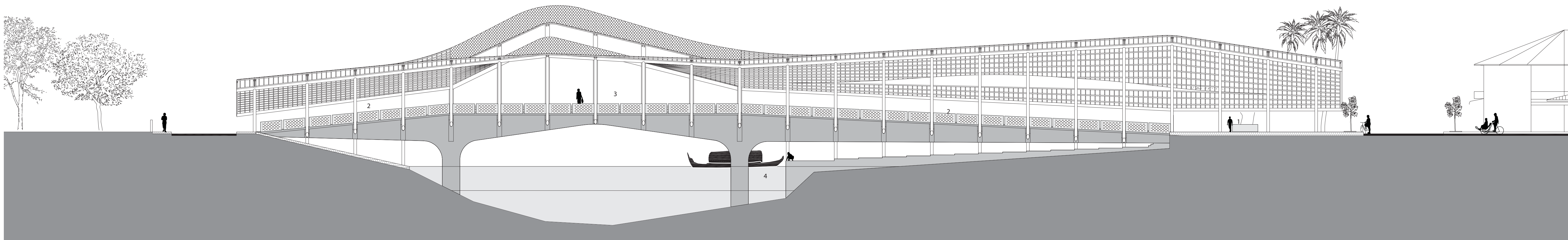
Plan | 1:200 | N



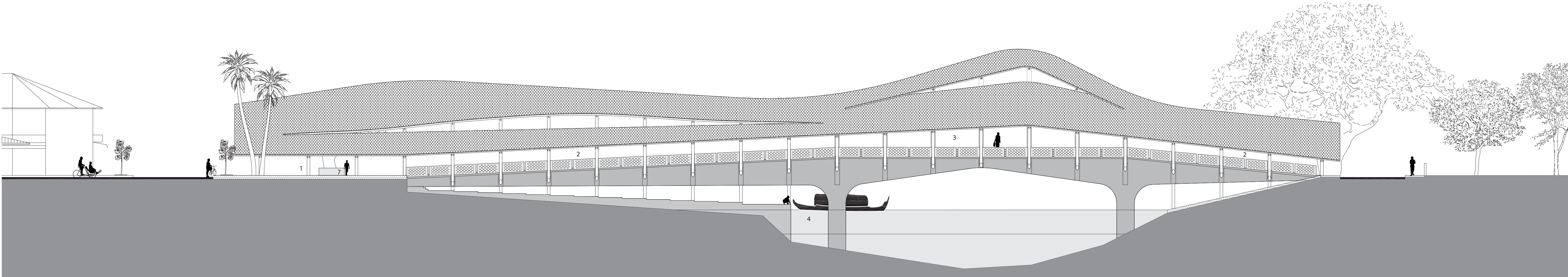
5 m 5 m 5 m 45 m 30 m 20 m

Plan | Section | 1:1000 | N





North elevation | 1 : 200



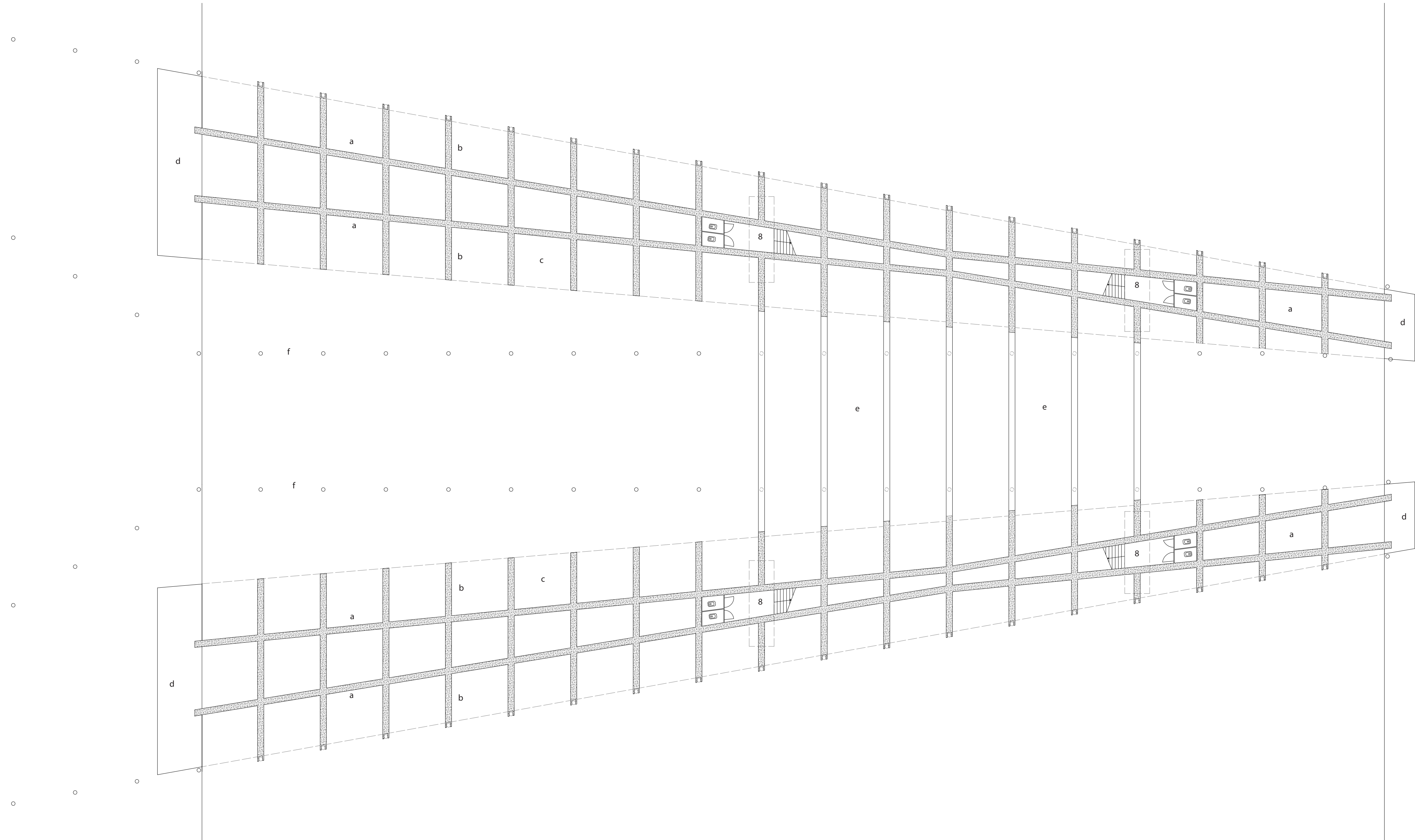
South elevation | 1 : 200

- 1. street market
- 2. work benches
- 3. restaurants
- 4. dock (year round)
- 5. dock (seasonal)
- 6. taps
- 7. washing facility
- 8. toilets

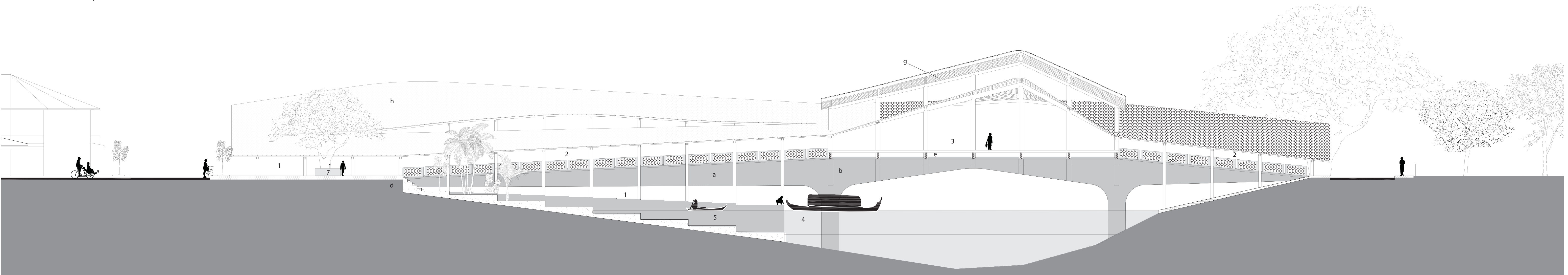
- 1. street market
- 2. work benches
- 3. restaurants
- 4. dock (year round)
- 5. dock (seasonal)
- 6. taps
- 7. washing facility
- 8. toilets

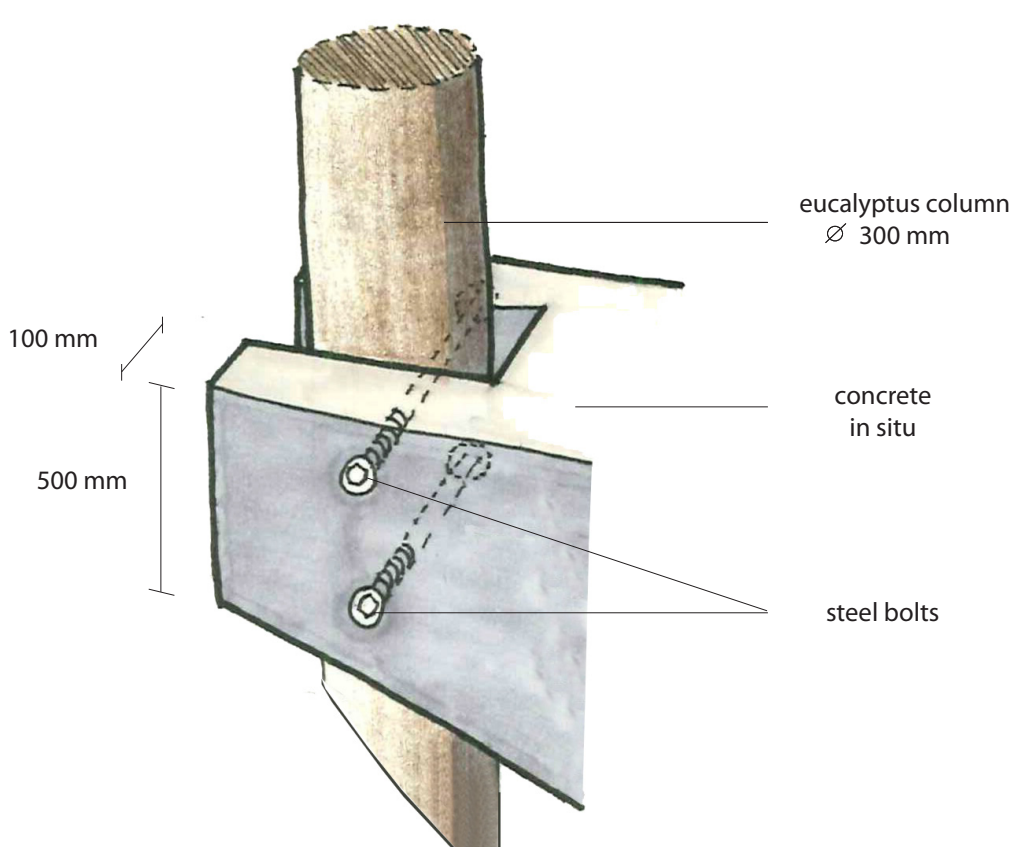
- a. spine, concrete in-situ
- b. fins, concrete in-situ
- c. bridge deck, concrete in-situ
- d. bridge head, concrete in-situ
- e. beams, eucalyptus 500 x 700 mm
- f. columns, eucalyptus \varnothing 300 mm
- g. bamboo shafts, various sizes
- h. ceramic roof tiles

Bridge construction | 1 : 200 | 

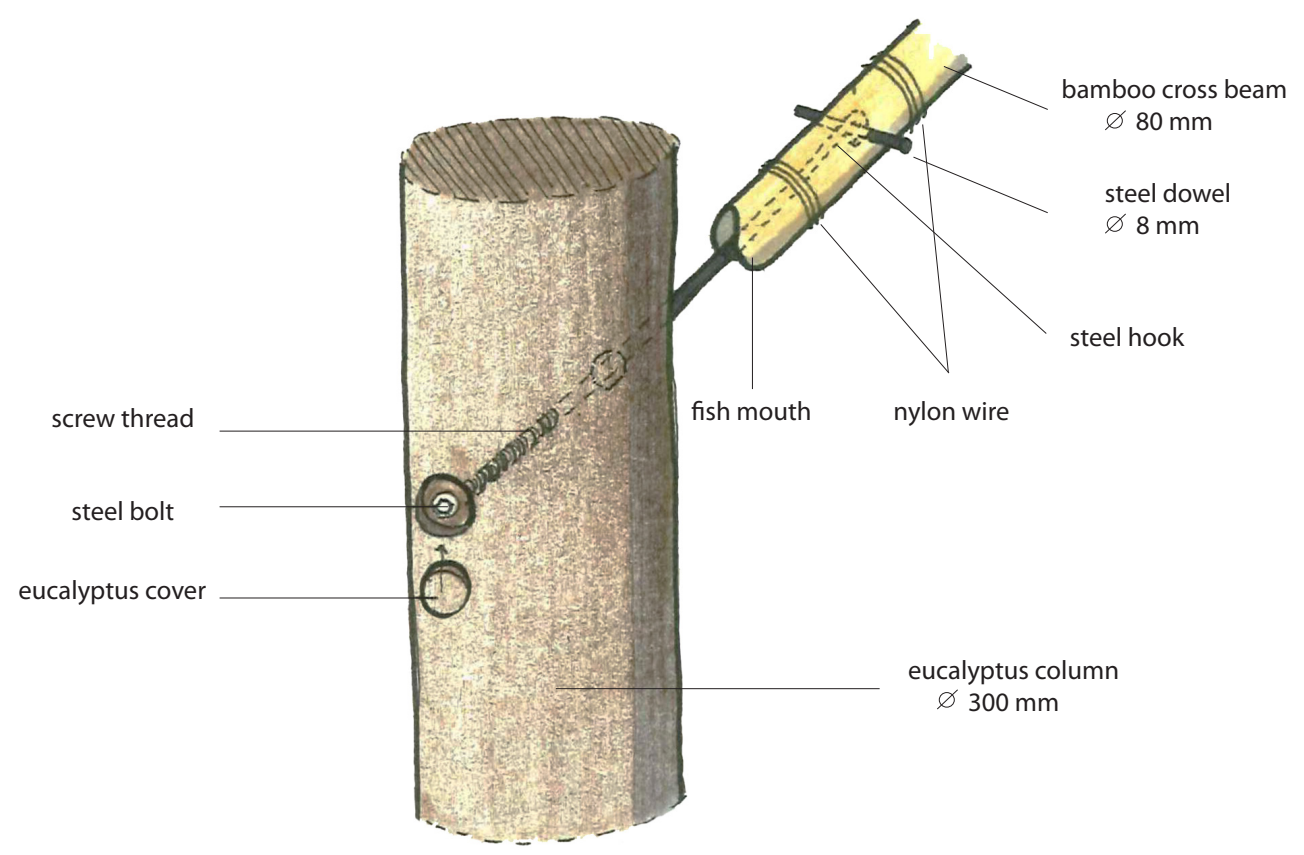


Section BB' | 1 : 200

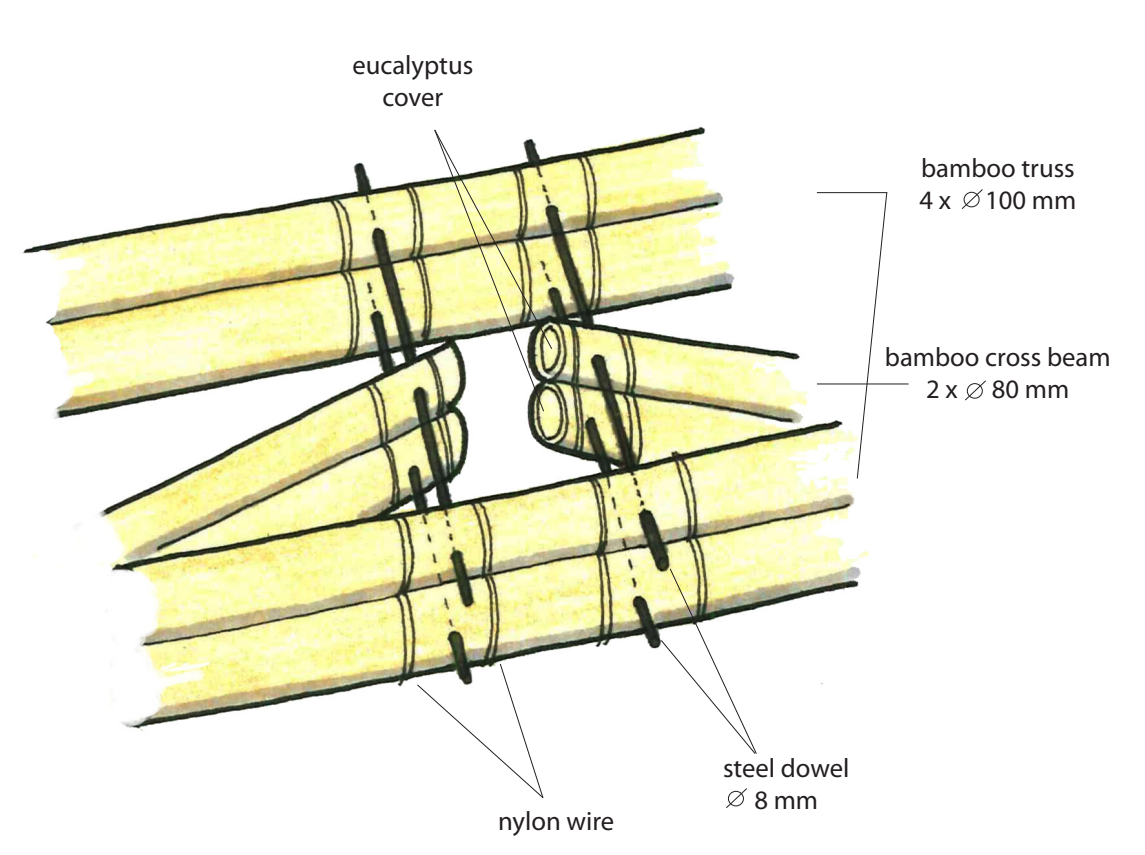




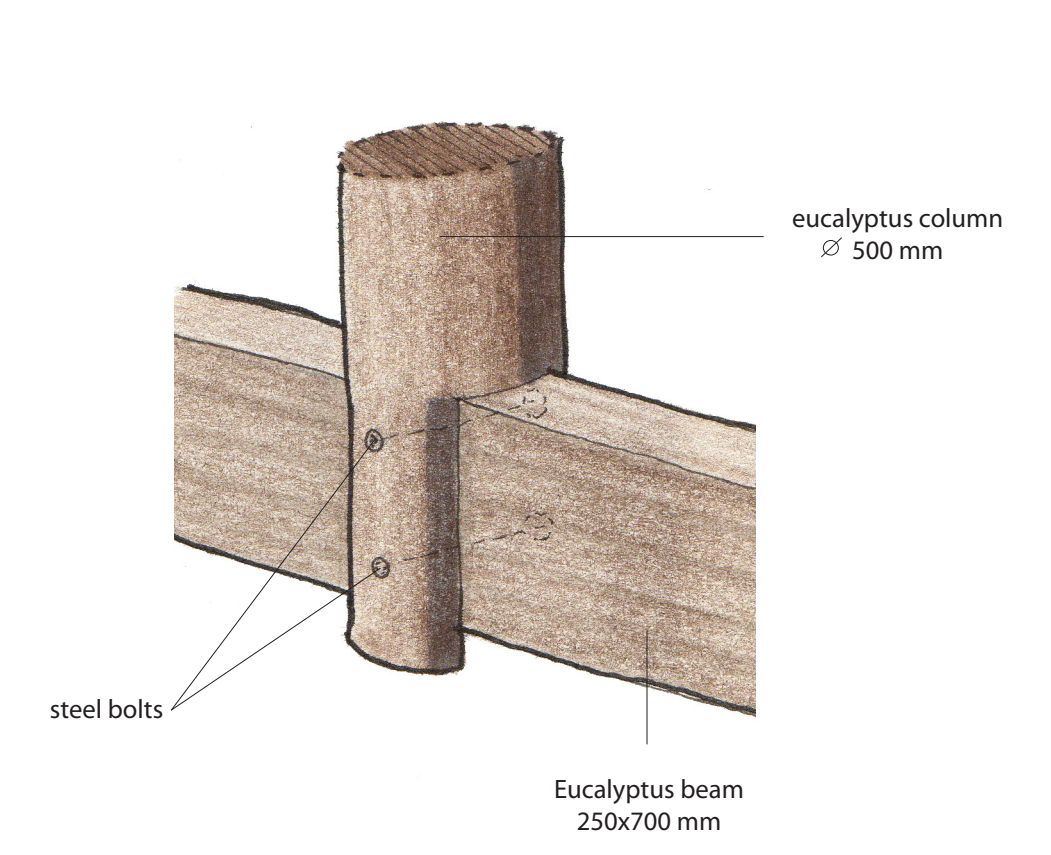
Detail 1



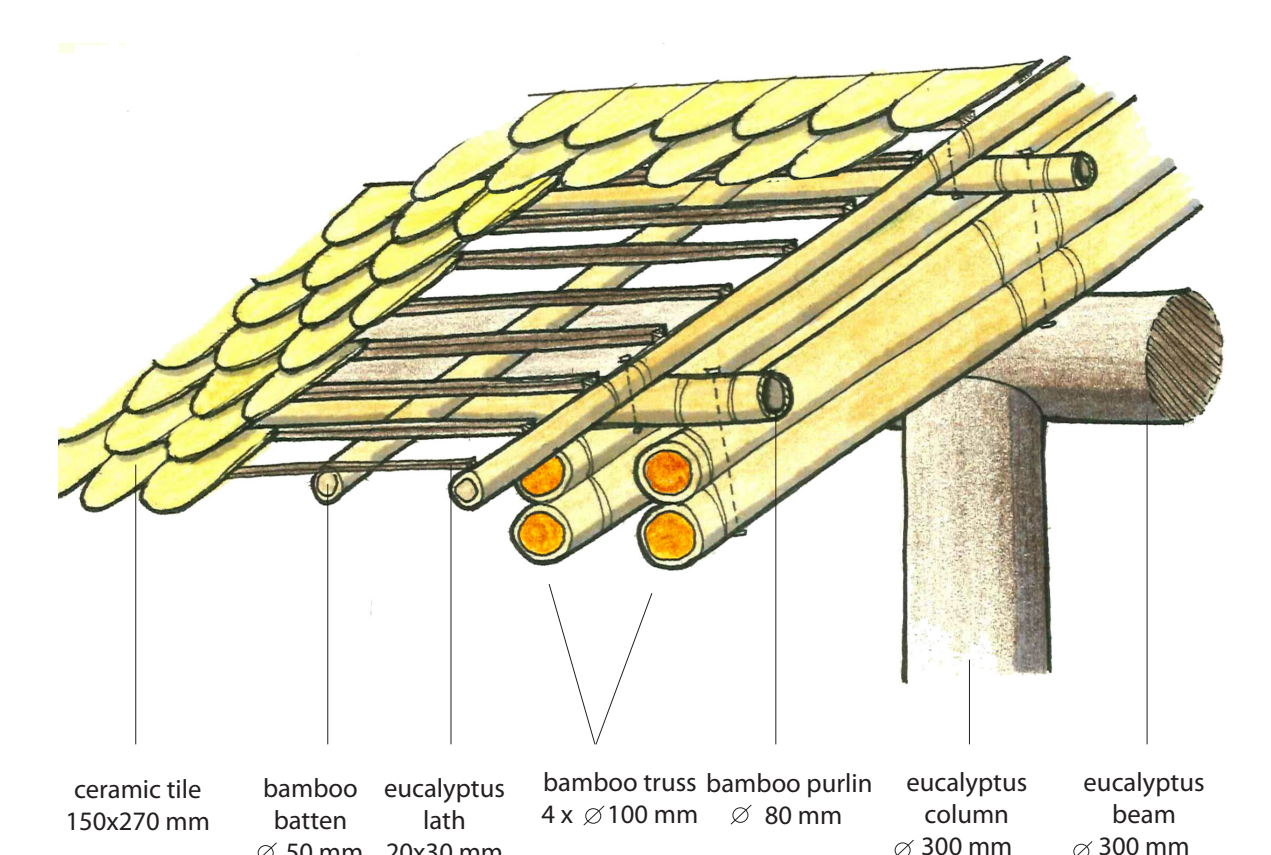
Detail 2



Detail 3



Detail 4



Detail 5

