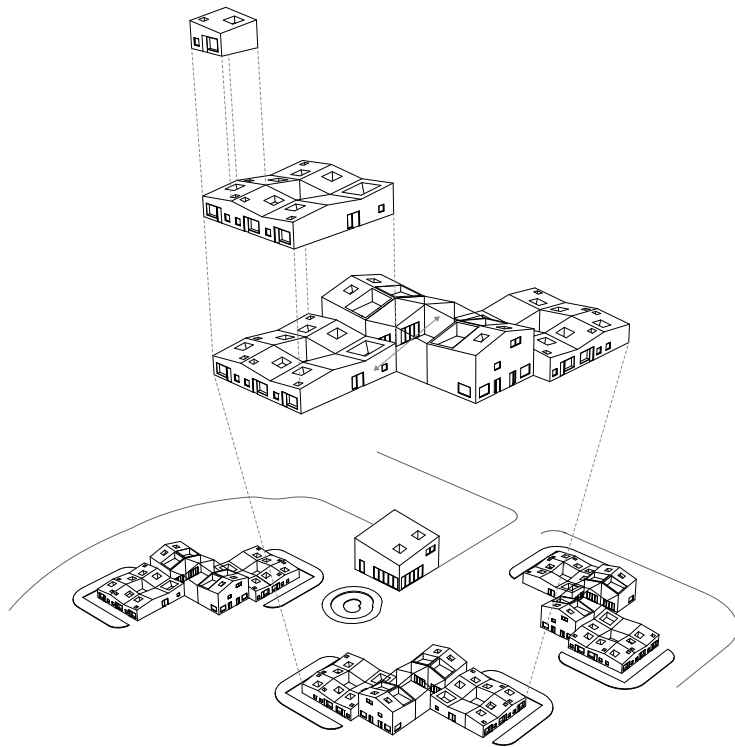


Design

Fun by the grey



All rights reserved. This book or any portion thereof may not be reproduced or used in any manner whatsoever without the express written permission of the author.

Author Marijn Bouwman
Student number 4653807

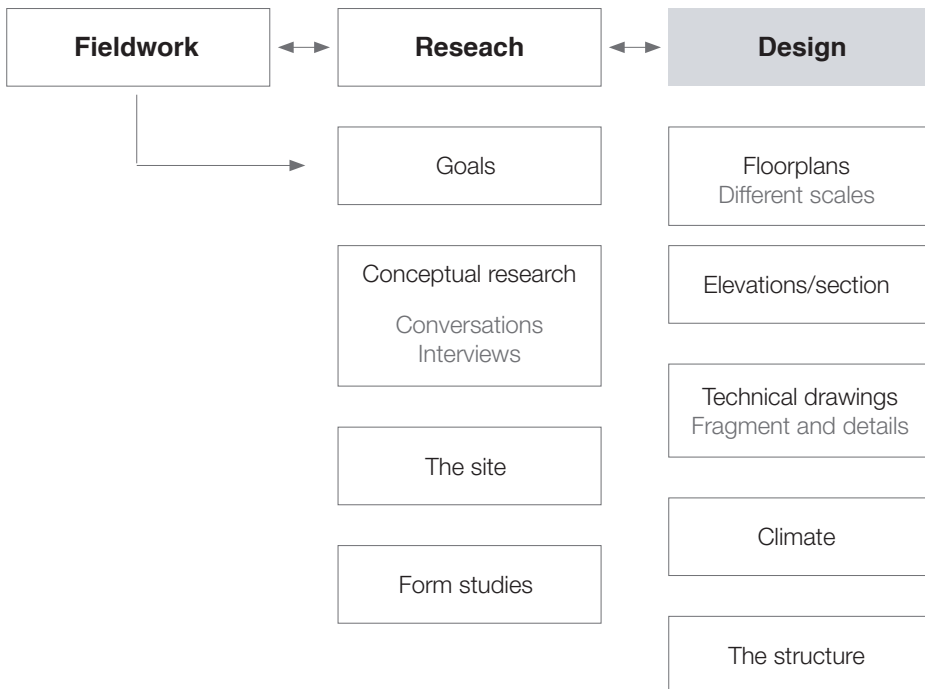
Graduation Studio Technische Universiteit Delft
Tutors Designing for care (AR3AD133)
First version Birgit Jürgehake, Leeke Reinders and Jos Lafeber
 30 June 2019

Design

Fun by the grey

Organization

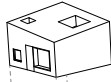
This project is subdivided into three booklets, the fieldwork, the research and the design. This booklet shows the design in drawings.



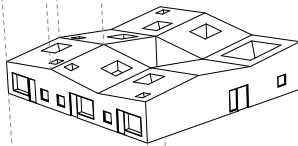
INSIDE OUT

Scales

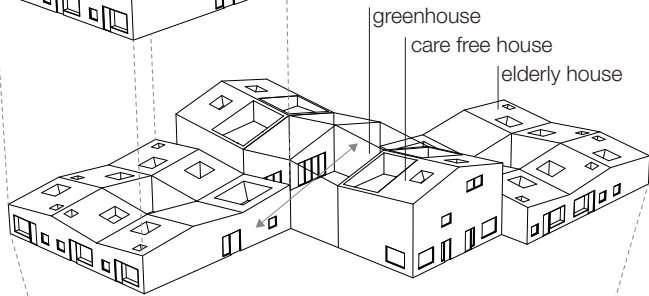
The room



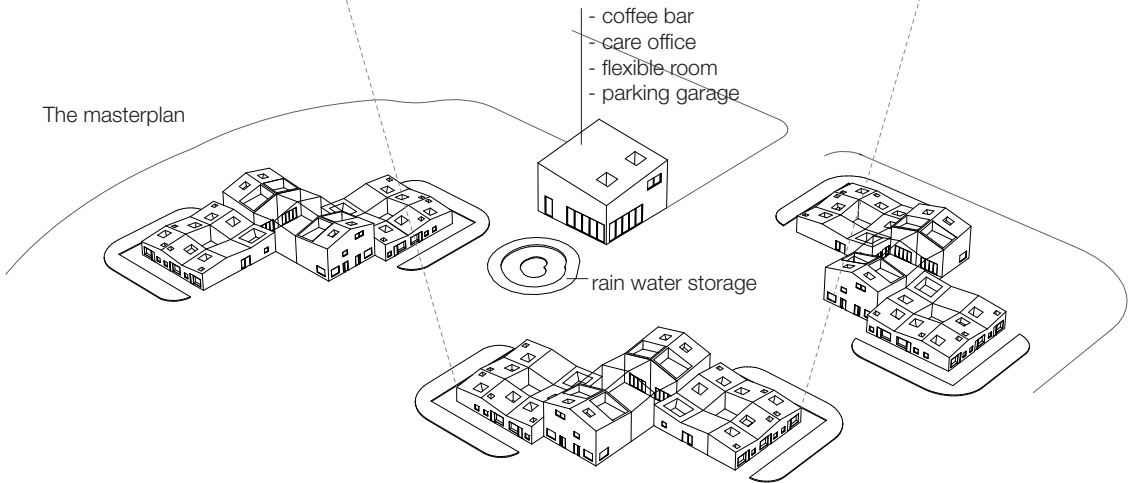
The house



The cluster

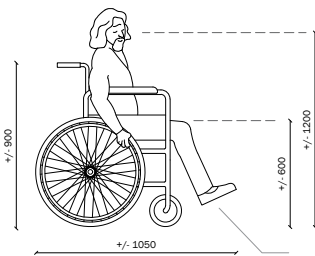
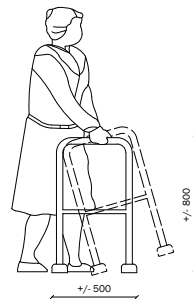
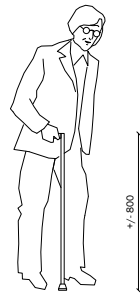
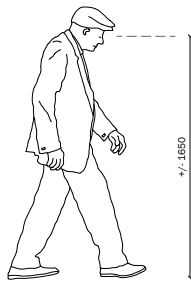


The masterplan

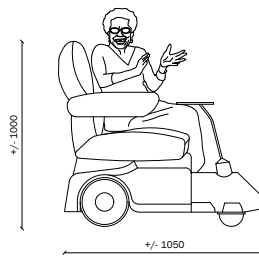


The target group

Elderly



Moves with the feet

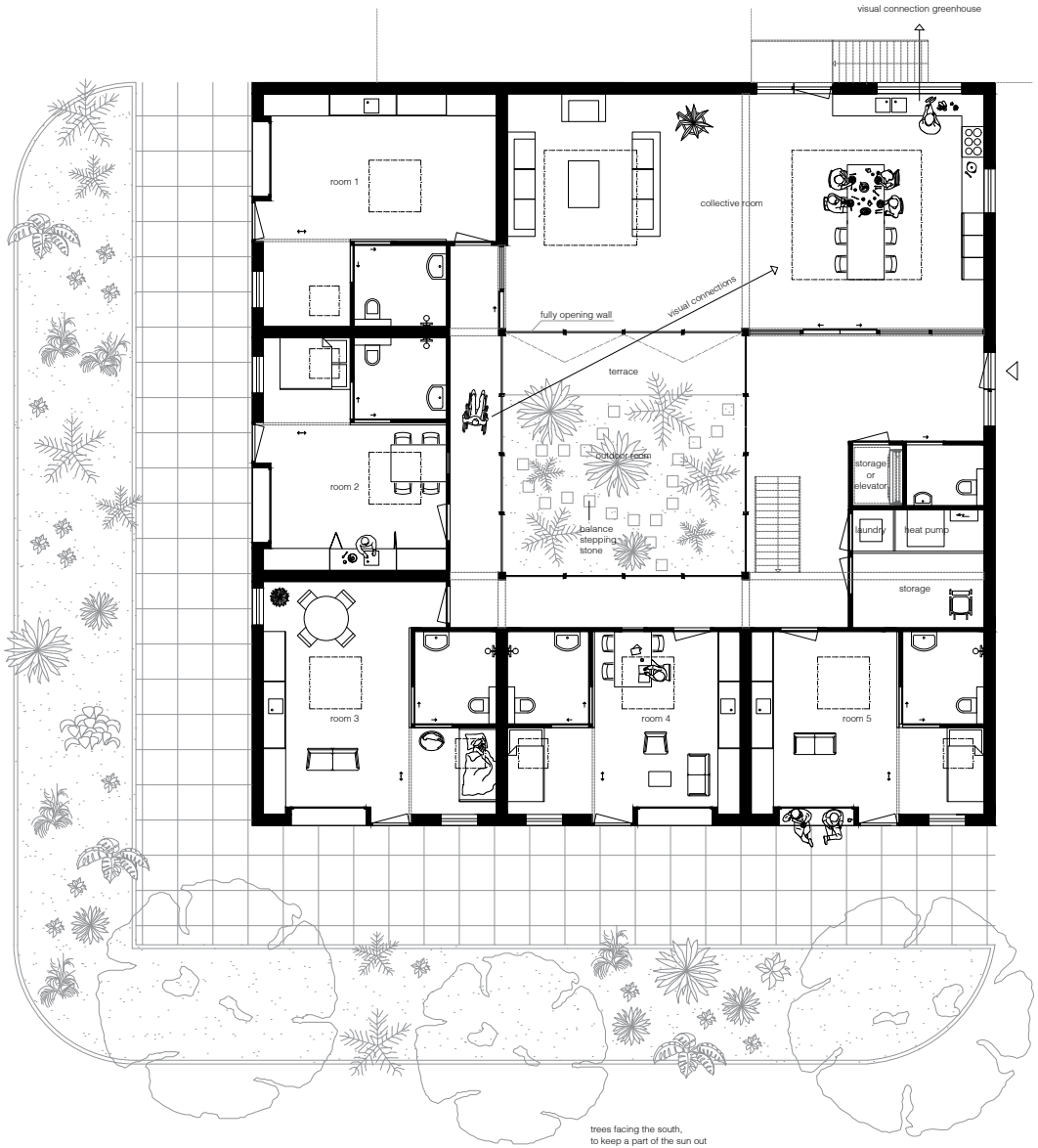


Outdoor transport

The individual room

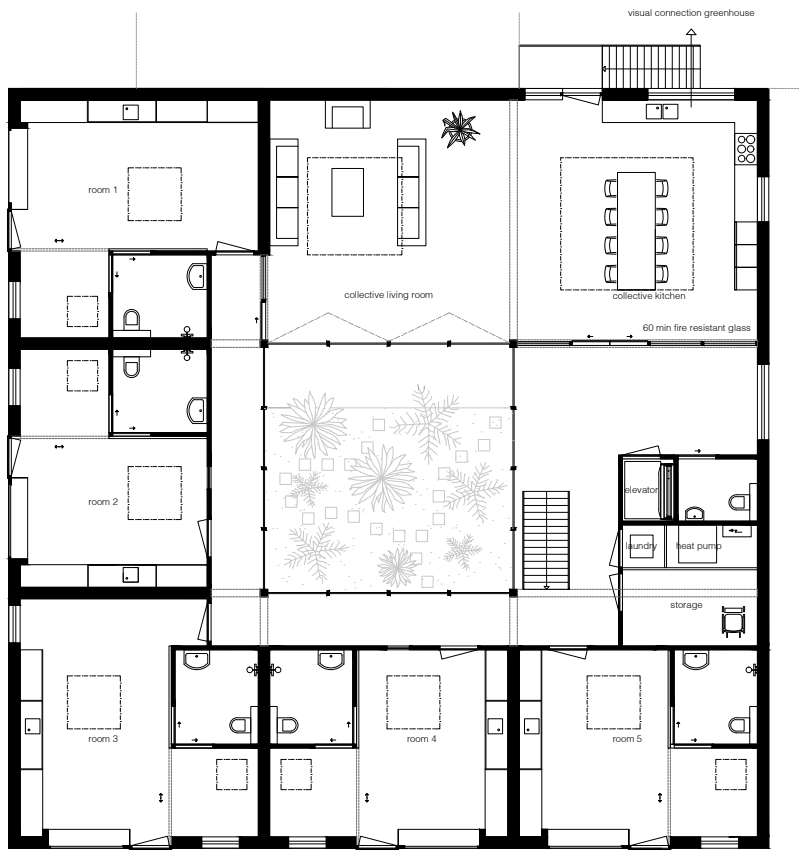
The senior collective living

The ground floor



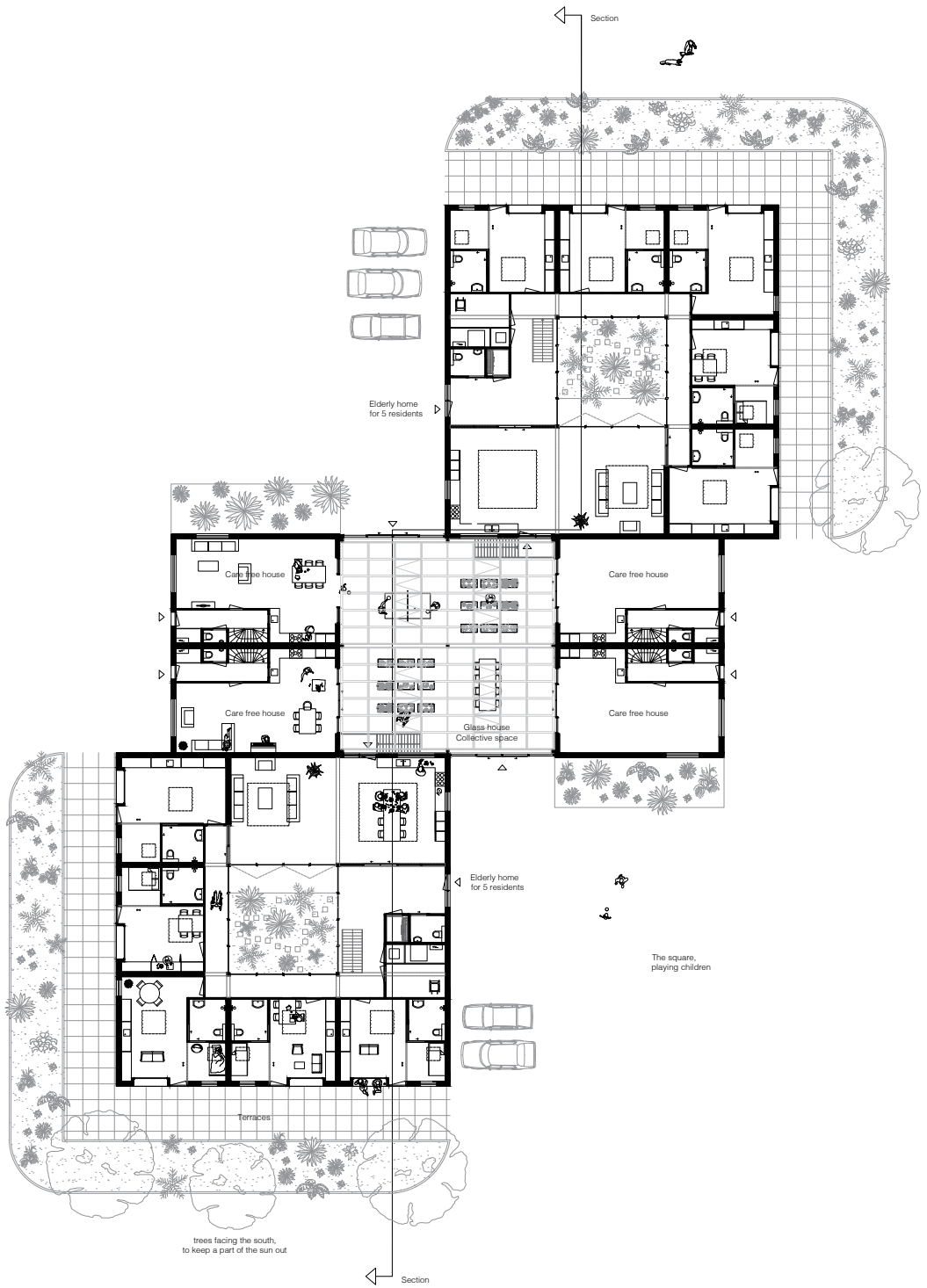
The senior collective living

The first floor



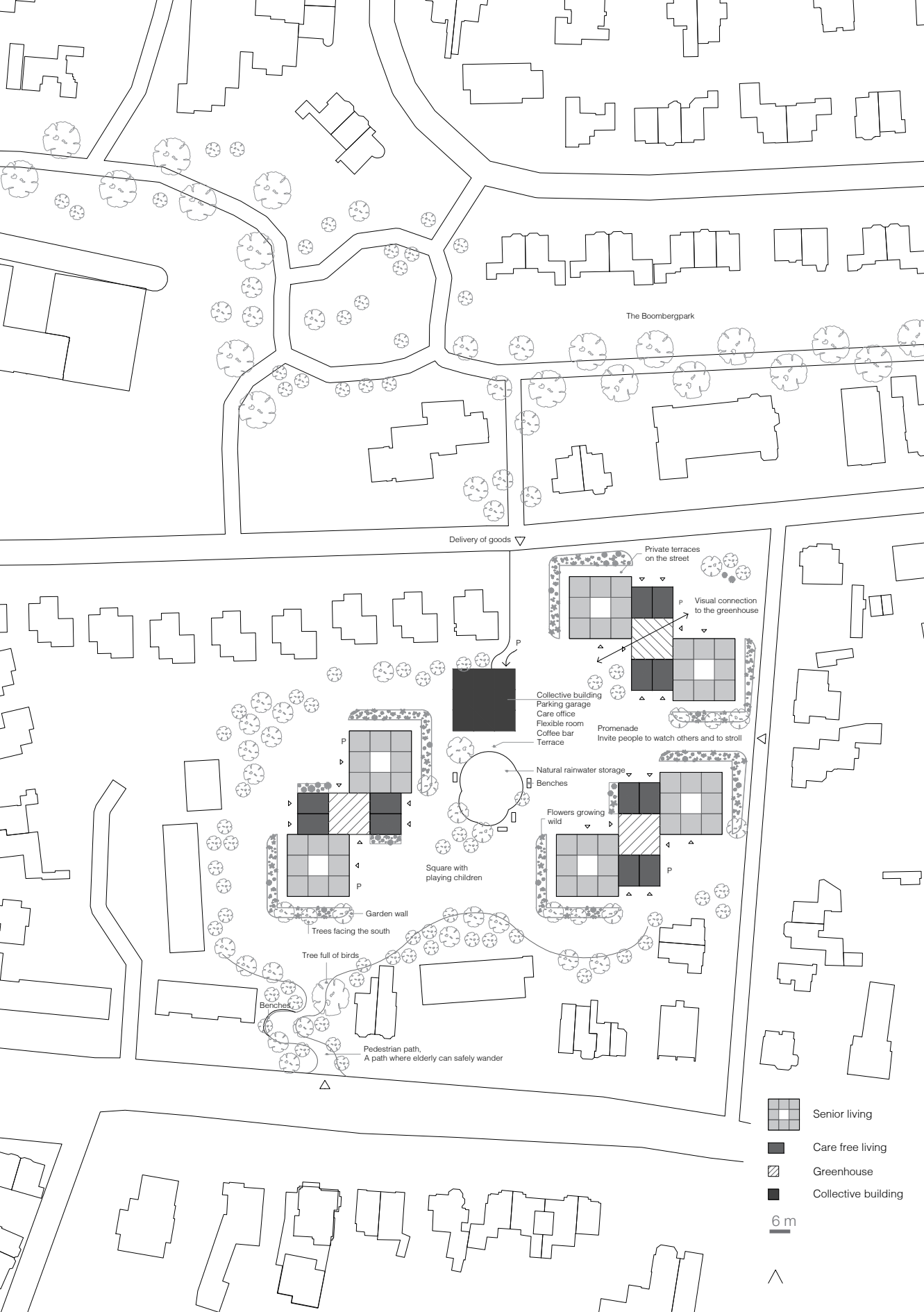
The cluster

Clusters of senior collective livings, care free livings and a greenhouse



The masterplan

Hilversum



Delivery of goods ▼

The Boombergpark

Private terraces on the street

Visual connection to the greenhouse

Collective building
 Parking garage
 Care office
 Flexible room
 Coffee bar
 Terrace

Promenade
 Invite people to watch others and to stroll

Natural rainwater storage

Benches

Square with playing children

Flowers growing wild

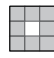



Garden wall

Trees facing the south

Tree full of birds

Benches

Pedestrian path.
 A path where elderly can safely wander

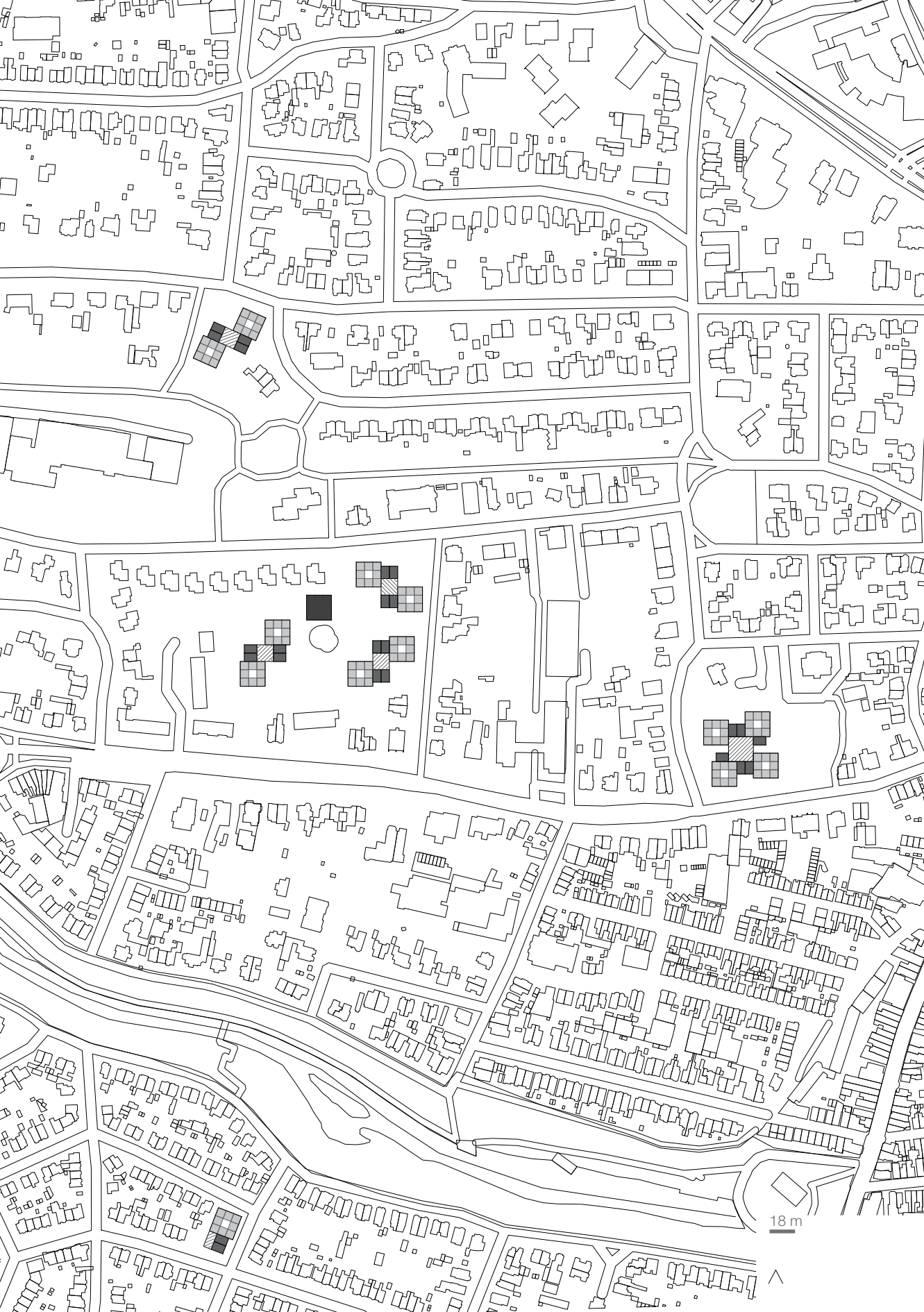
-  Senior living
-  Care free living
-  Greenhouse
-  Collective building

6 m

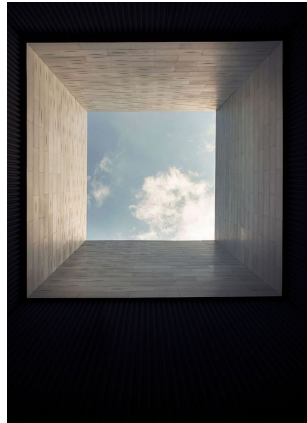


The village

'Old people everywhere'
A growing ssystem



Material portrait



One or two floors

The elderly house can be extended



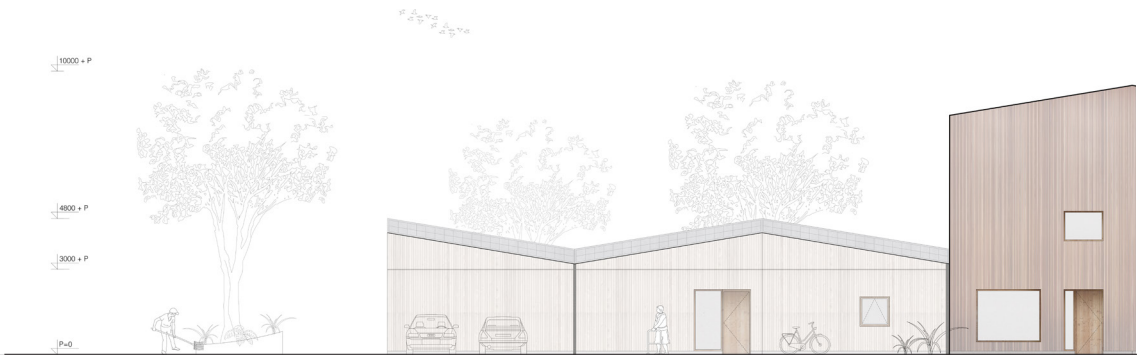


Elevation, 1 floor



Elevation, 2 floors

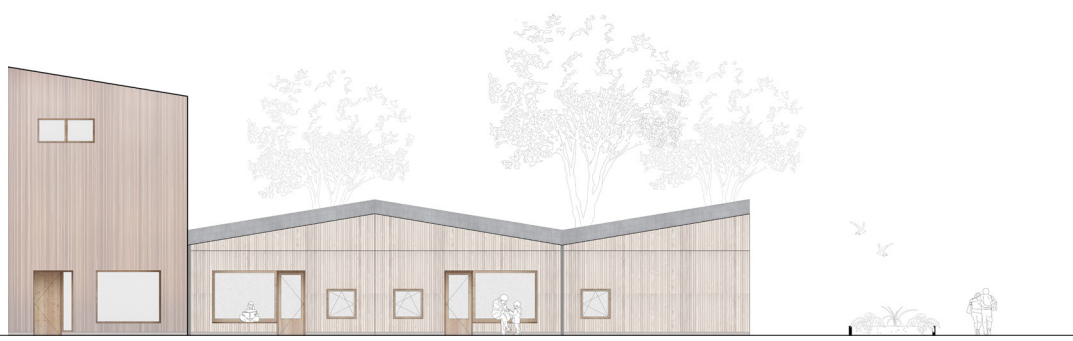




Elevation, 1 floor

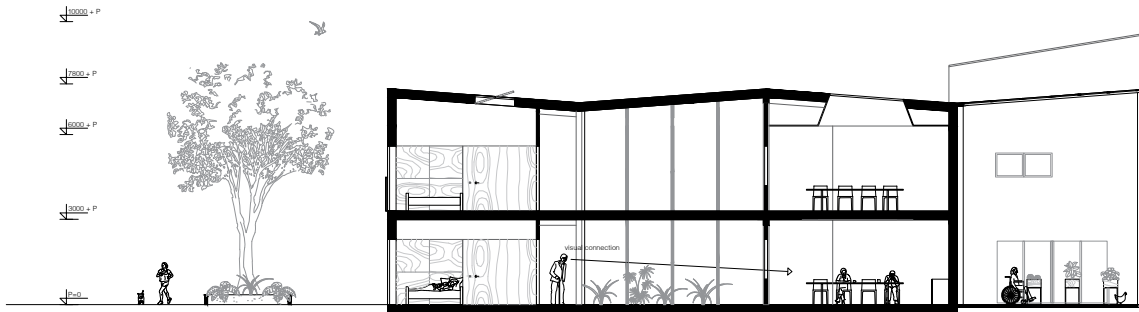


Elevation, 2 floors

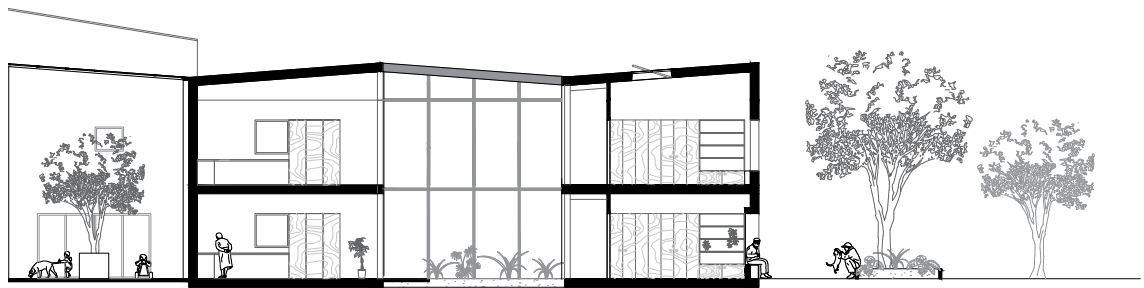
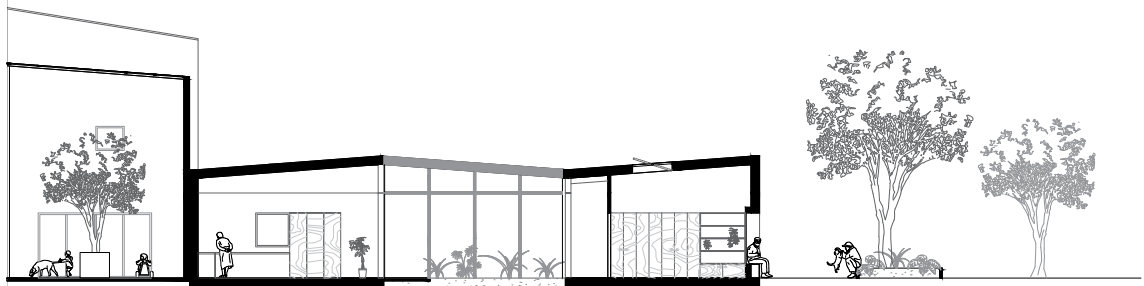


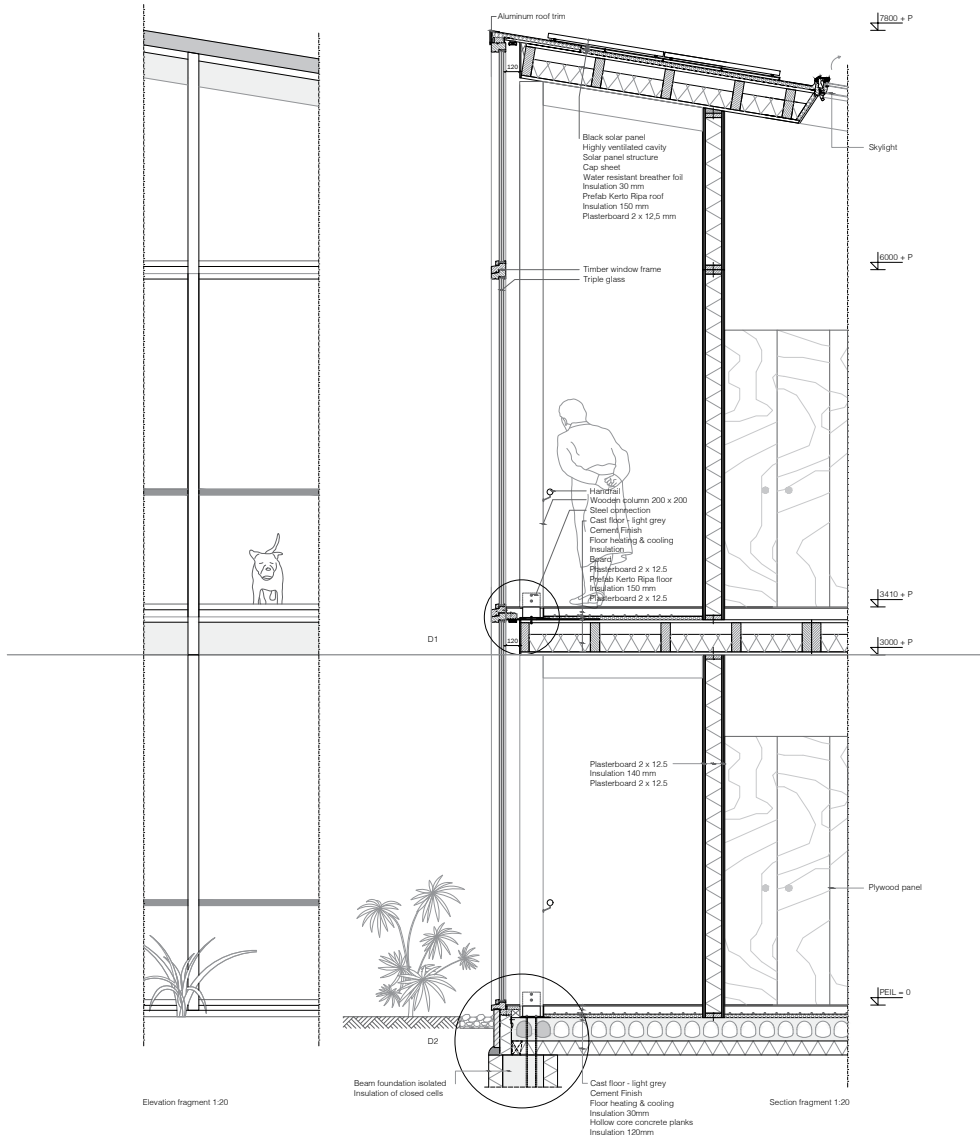


Section, 1 floor



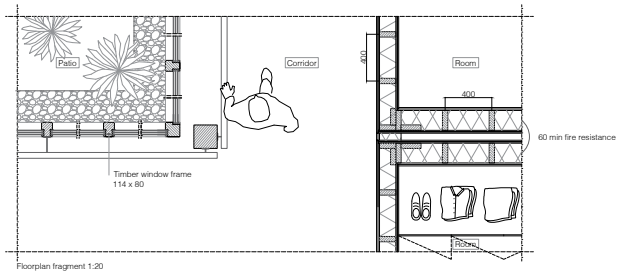
Section, 2 floors



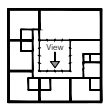


Elevation fragment 1:20

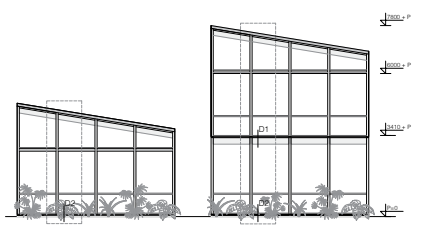
Section fragment 1:20



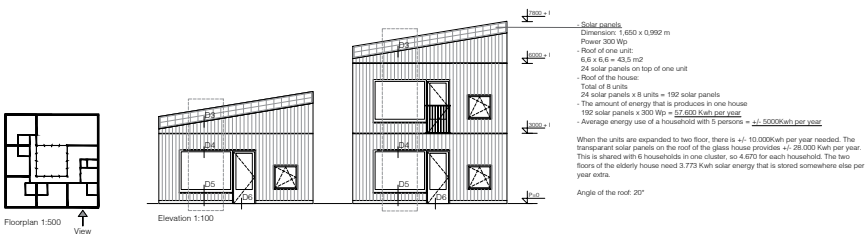
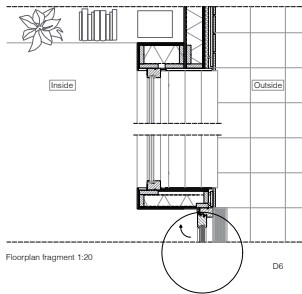
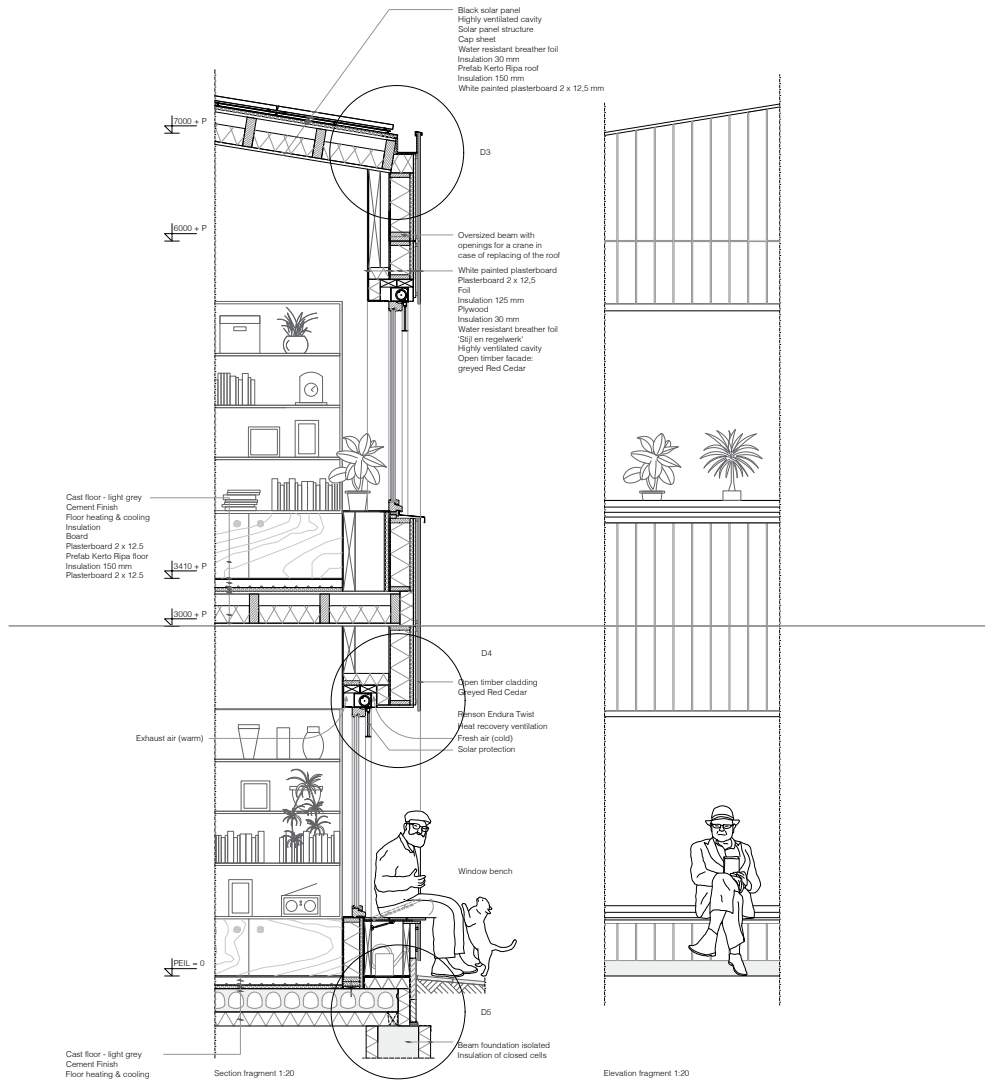
Floorplan fragment 1:20



Floorplan 1:500

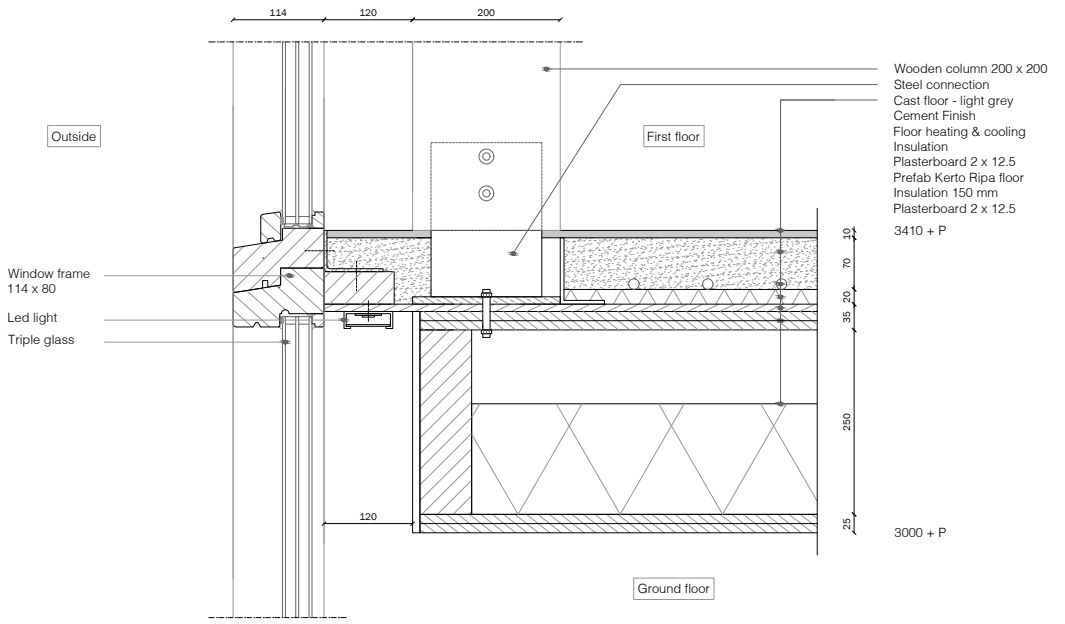


Elevation 1:100



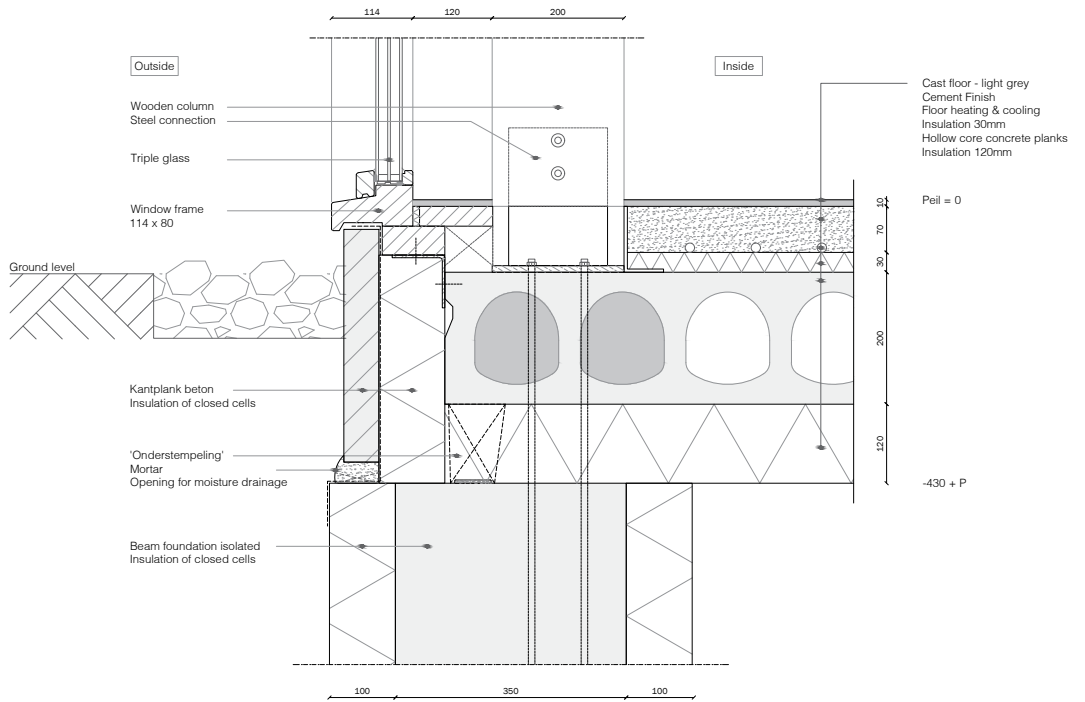
Detail 1

Connection of the floor and facade



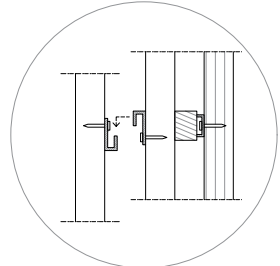
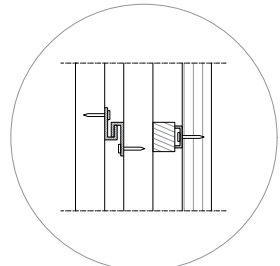
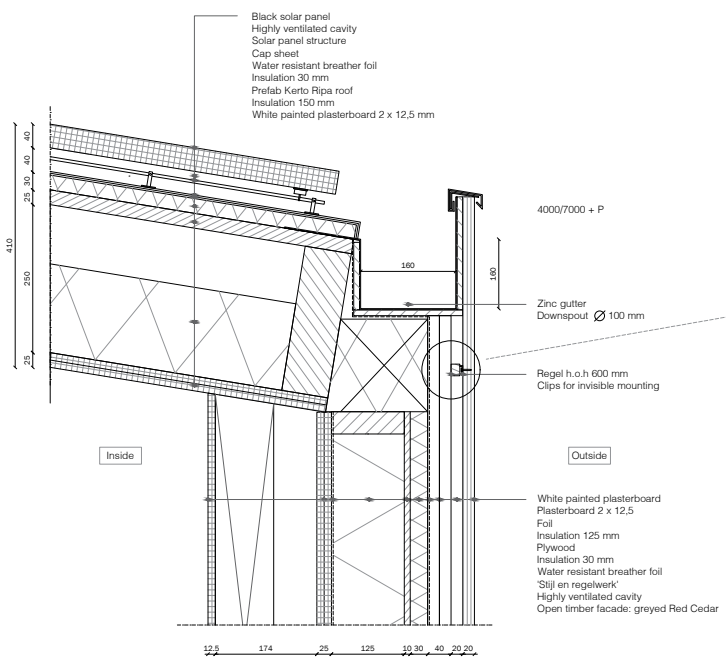
Detail 2

Connection of the floor and foundation



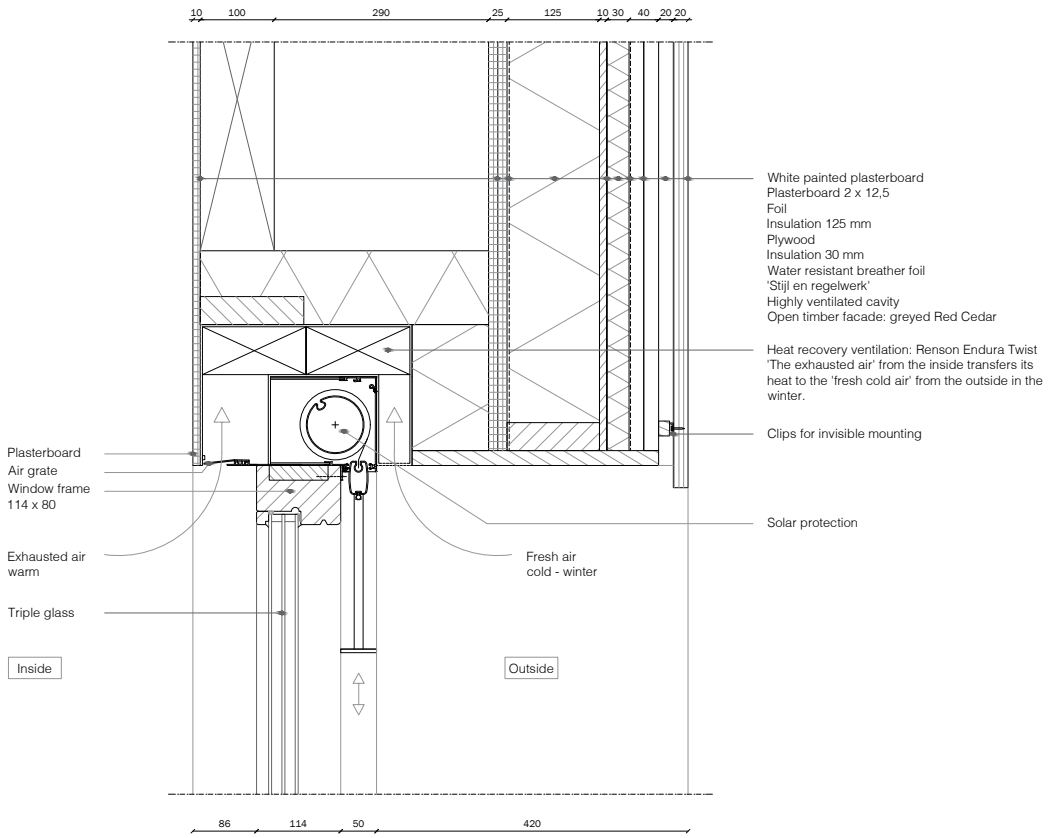
Detail 3

Connection of the roof and facade



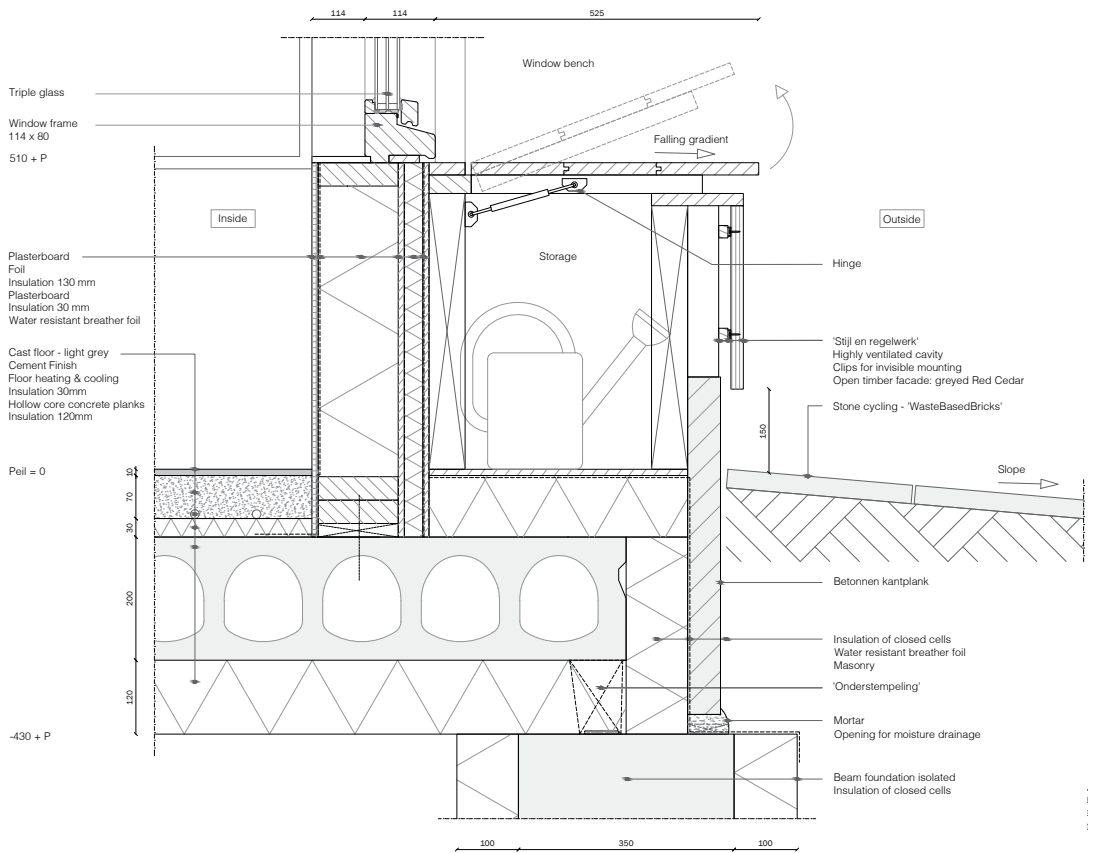
Detail 4

Connection of the window and the facade



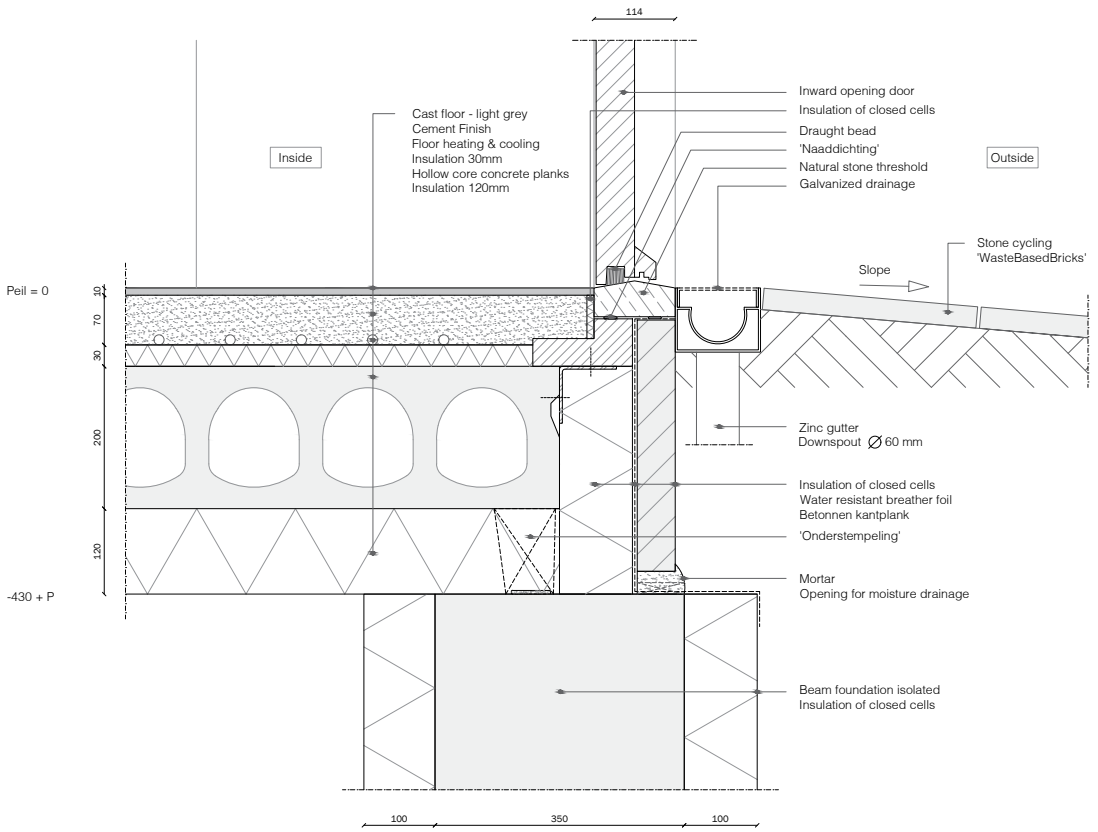
Detail 5

Connection of the window, floor and foundation



Detail 6

Connection of the door, floor and foundation



Inside

Outside

Peil = 0

-430 + P

Cast floor - light grey
Cement Finish
Floor heating & cooling
Insulation 30mm
Hollow core concrete planks
Insulation 120mm

Inward opening door
Insulation of closed cells
Draught bead
'Naaddichting'
Natural stone threshold
Galvanized drainage

Stone cycling
'WasteBasedBricks'

Slope

Zinc gutter
Downspout Ø 60 mm

Insulation of closed cells
Water resistant breather foil
Betonnen kantplank
'Onderstempeling'

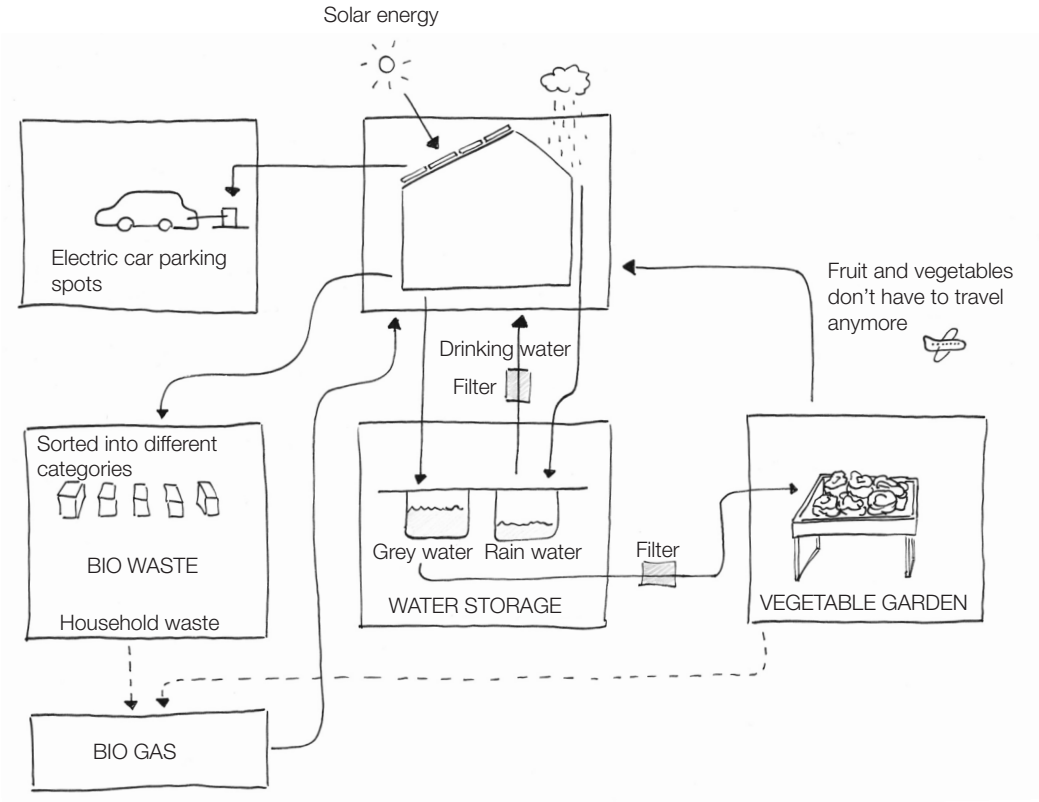
Mortar
Opening for moisture drainage

Beam foundation isolated
Insulation of closed cells

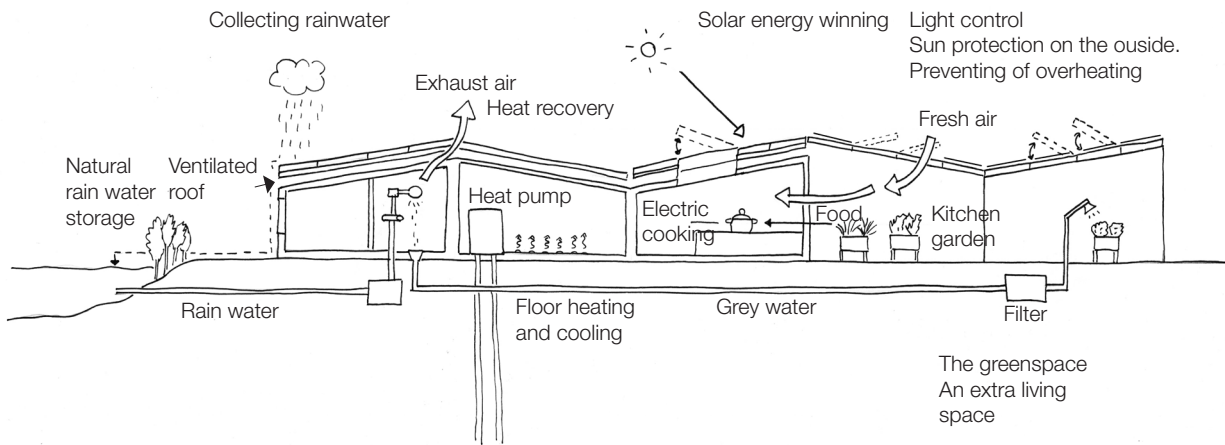
114

100 350 100

Climate concept

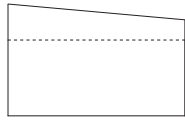


Climate and installations



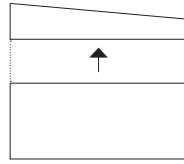
Structure concept

Demountable system
Expansion of the floors



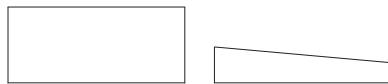
start

The ground floor



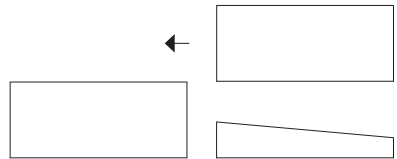
step 1

Remove the demountable roof



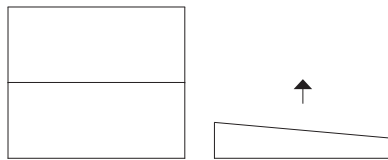
step 2

Temporary storage of the roof



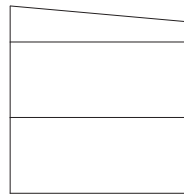
step 3

A new floor is added



step 4

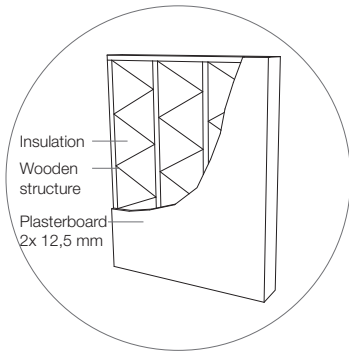
Place the roof on top of the floors



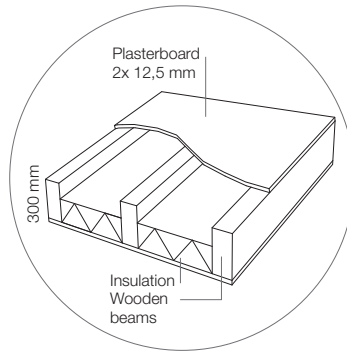
final product

Two floors

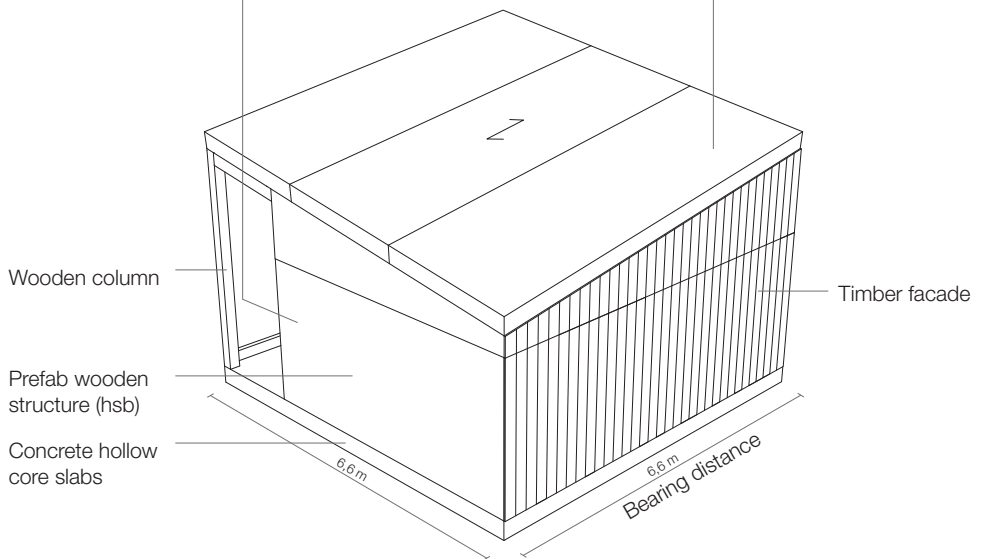
One unit



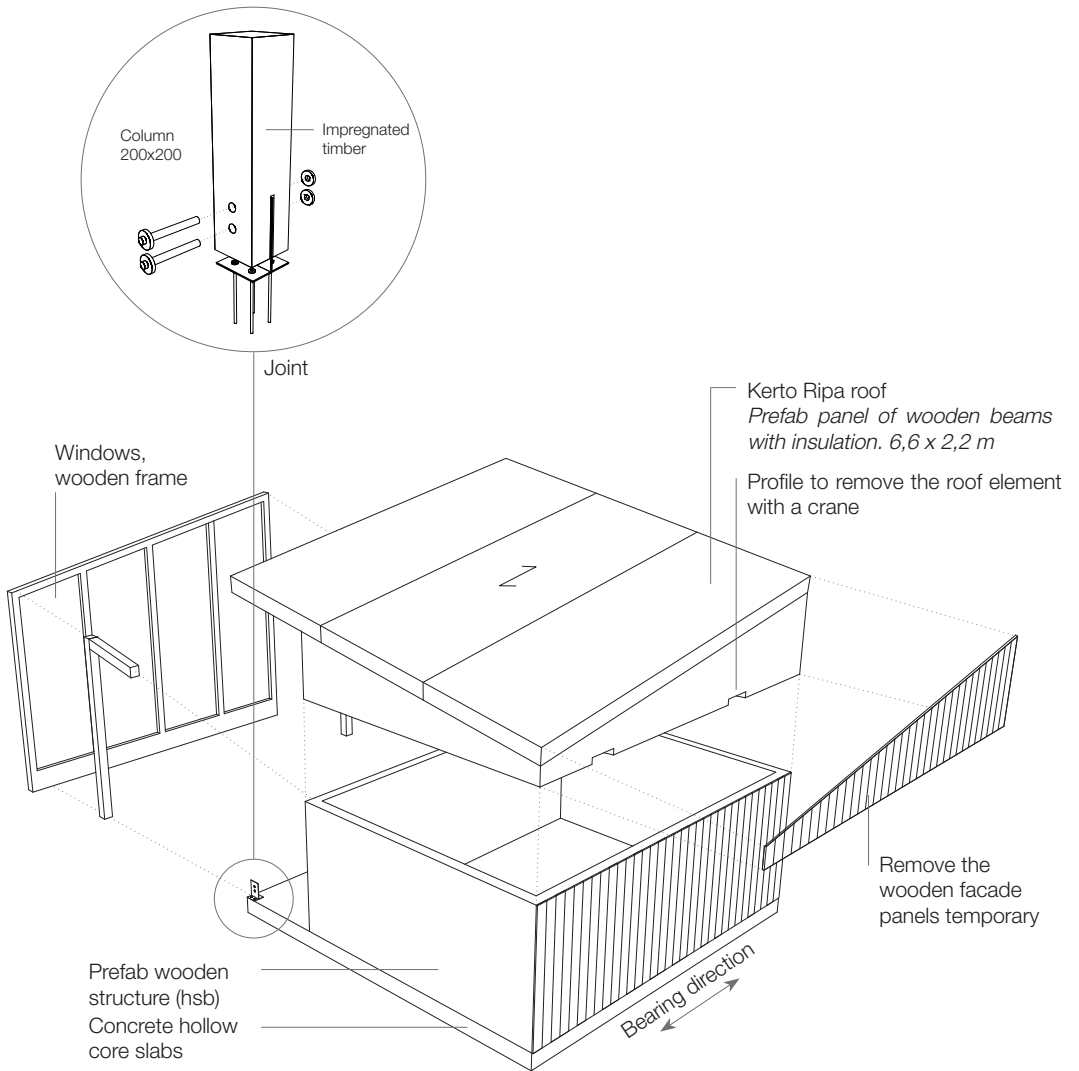
Prefab wooden structure (hsb)



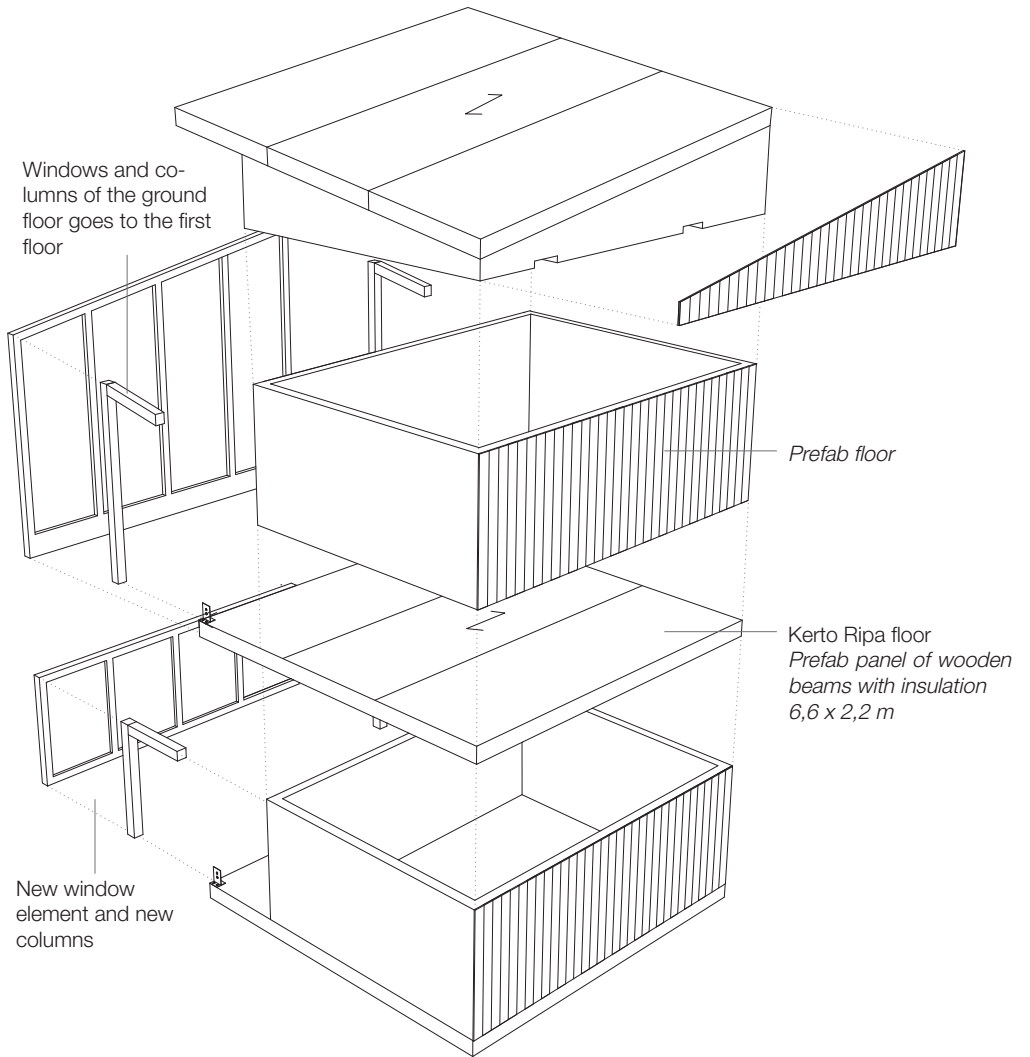
Kerto Ripa roof
Prefab panels of wooden beams with insulation
6,6 x 2,2 m



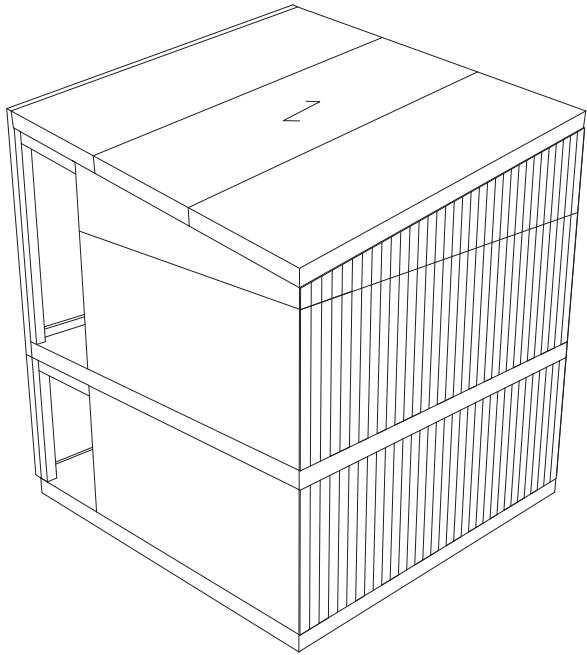
Demountable system



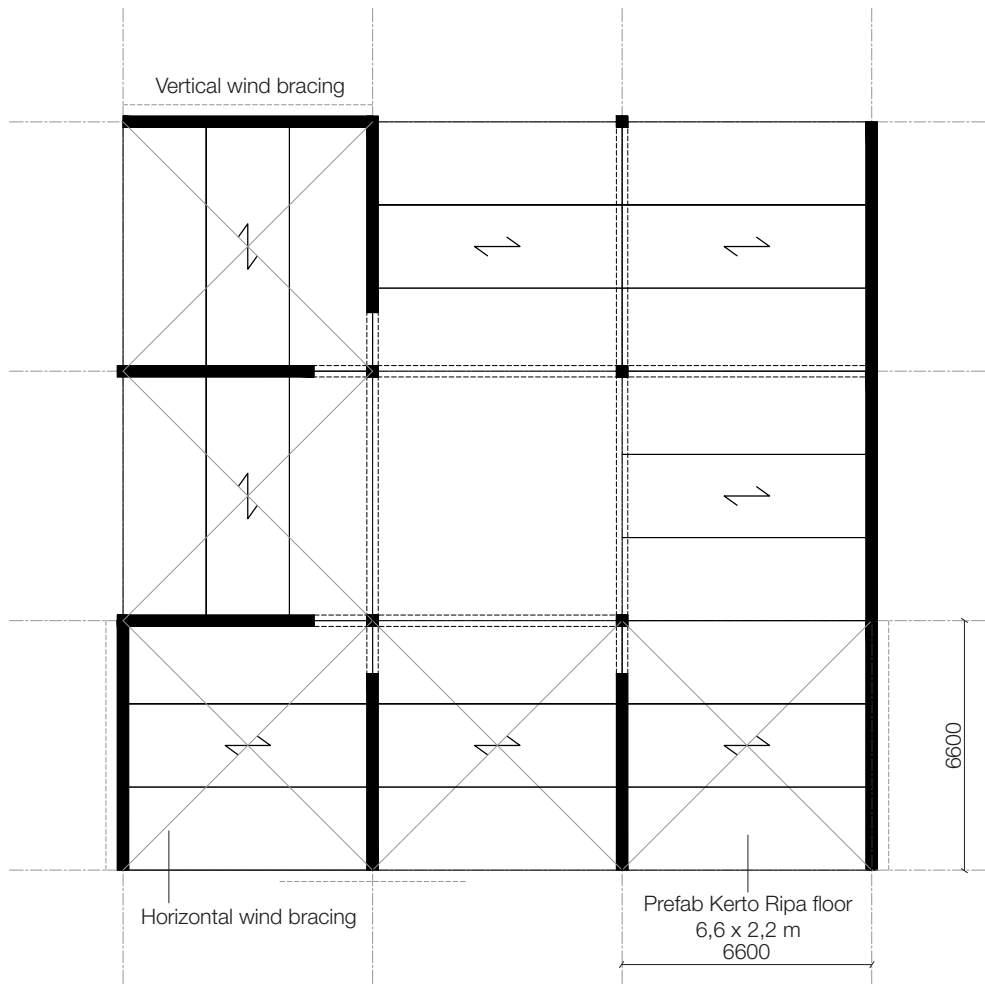
The new unit is added



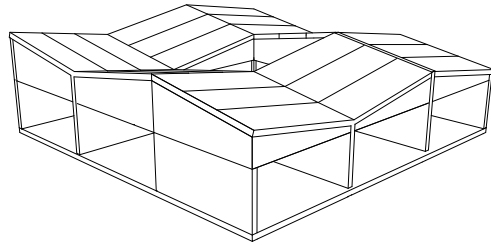
Two units



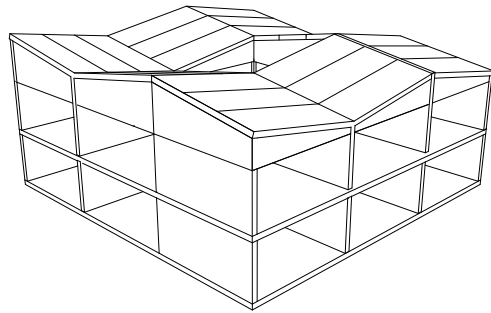
Structure in floorplan



The structure



One floor



Two floors

