

HET FORUM ROTTERDAM

P5 Presentatie TALL

Martijn Hassefras

Project: Tall - Januari 2011

Begeleiders: Rob Bollen - Maarten Meys

Gecommitteerde: Leo van den Burg



HET FORUM ROTTERDAM

M T A I L

Ontwerpproject Architecture – Materialisation

HET FORUM ROTTERDAM
15000 m² 2014-2015



TU Delft
Delft University of Technology

- Week 1: 5 dagen lezingen over hoogbouw
- Week 2
- Week 3: Tussentijdse presentatie: 3 concepten
- Week 4
- Week 5
- Week 6
- Week 7
- Week 8: Eindpresentatie: uitwerking van 1 van de concepten



Workshop High-Rise



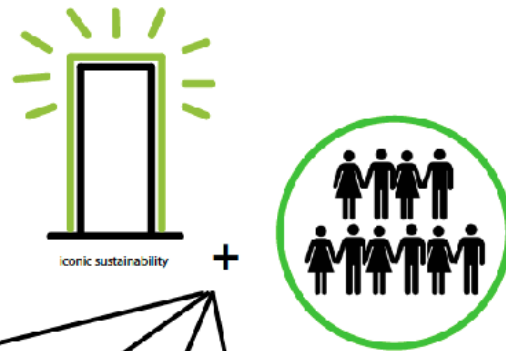
Ontwerppogave TALL

Ontwerpproject Archi

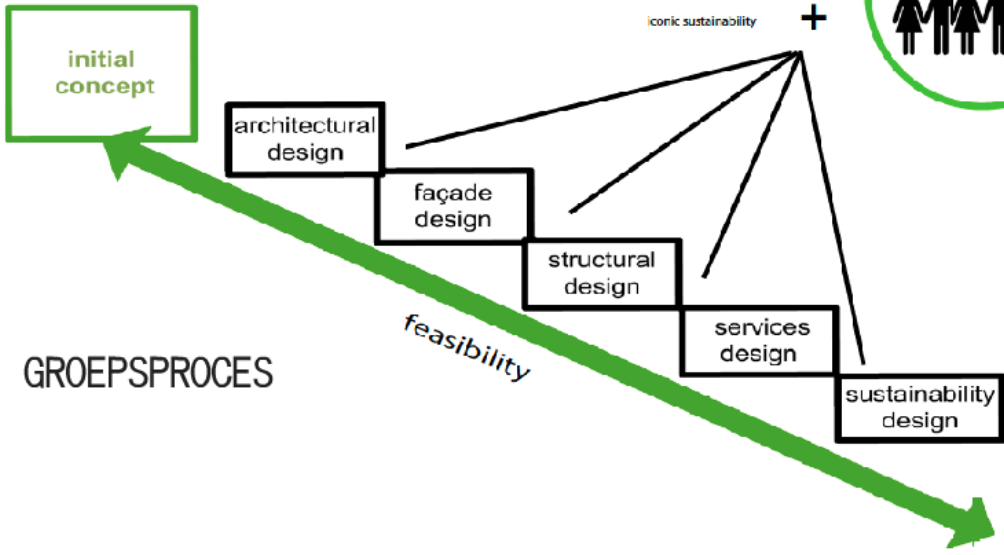
- Week 1 5 dagen lezingen
■ over hoogbouw
- Week 2 ■
- Week 3 Tussenpresentatie:
■ 3 concepten
- Week 4 ■
- Week 5 ■
- Week 6 ■
- Week 7 ■
- Week 8 Eindpresentatie:
■ uitwerking van 1
van de concepten



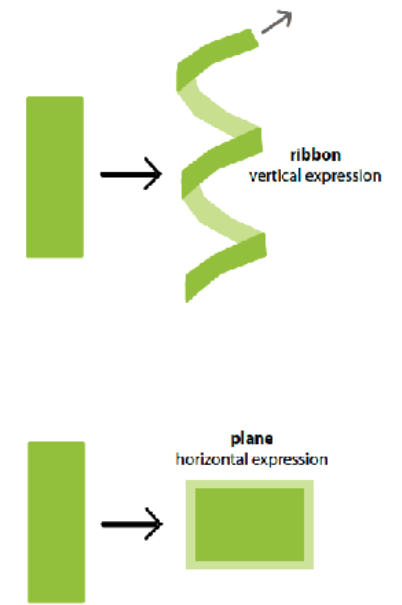
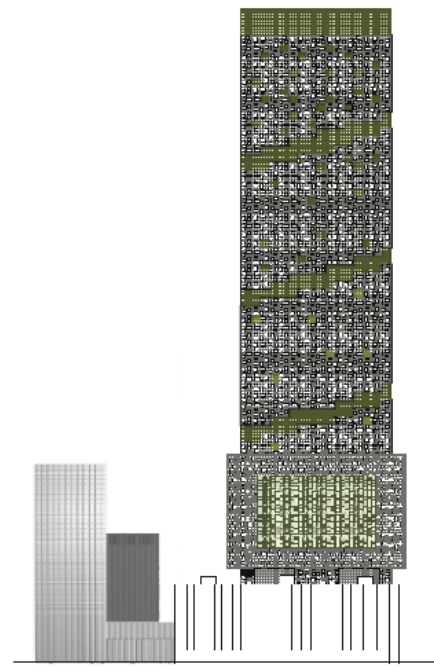
Workshop High-Rise



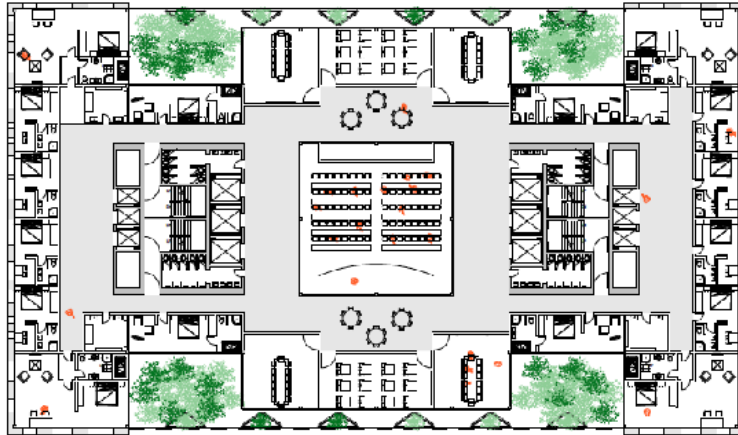
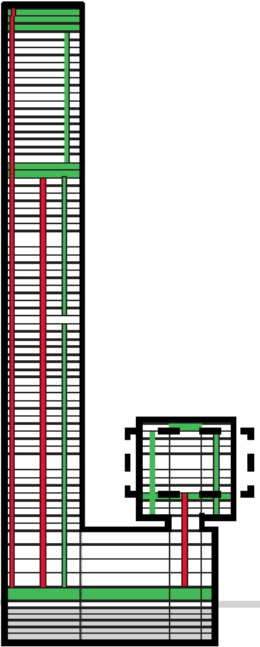
- Doelstellingen:
- Behandeling van alle facetten van hoogbouw.
 - Kennis opdoen van de aspecten rondom het ontwerpen van hoogbouw



GROEPSPROCES

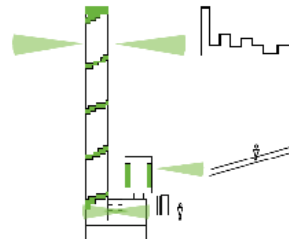


ICOON TERUGGEVEN AAN DE STAD



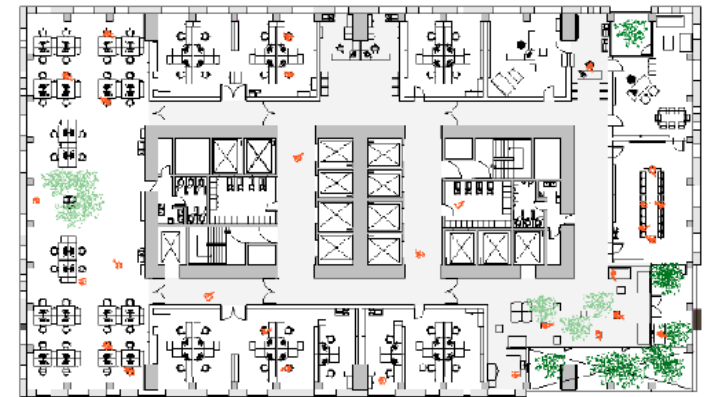
hotel / congress floor

GEBRUIKERSBEHOEFTE



- local factors
- adaptability
 - letability
 - synergies
 - urban connection

FUNCTIONEEL UITGEWERKT



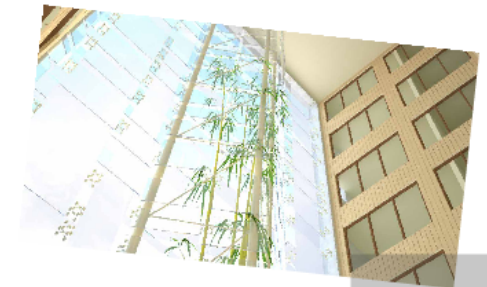
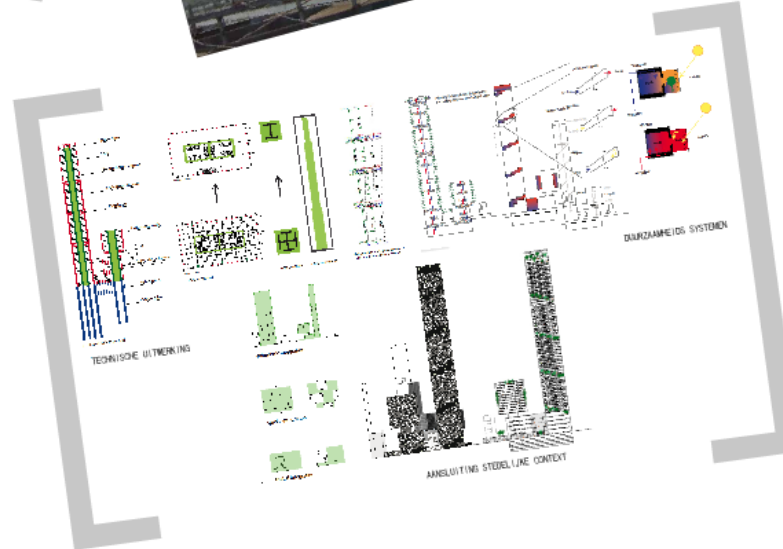
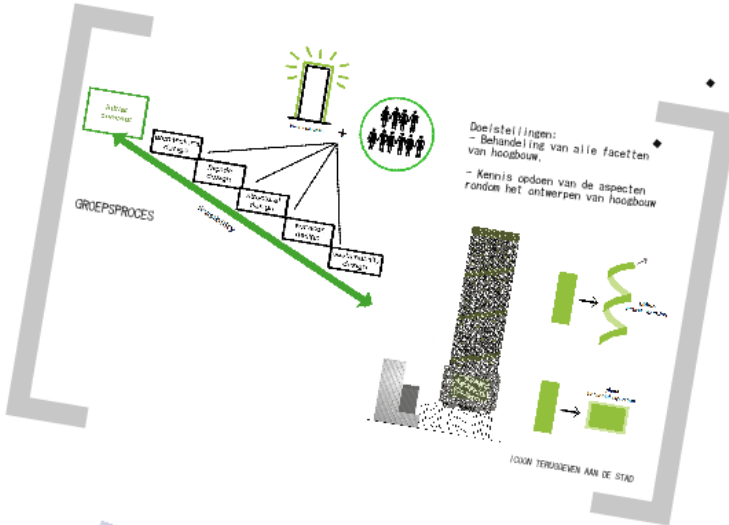
office floor high rise





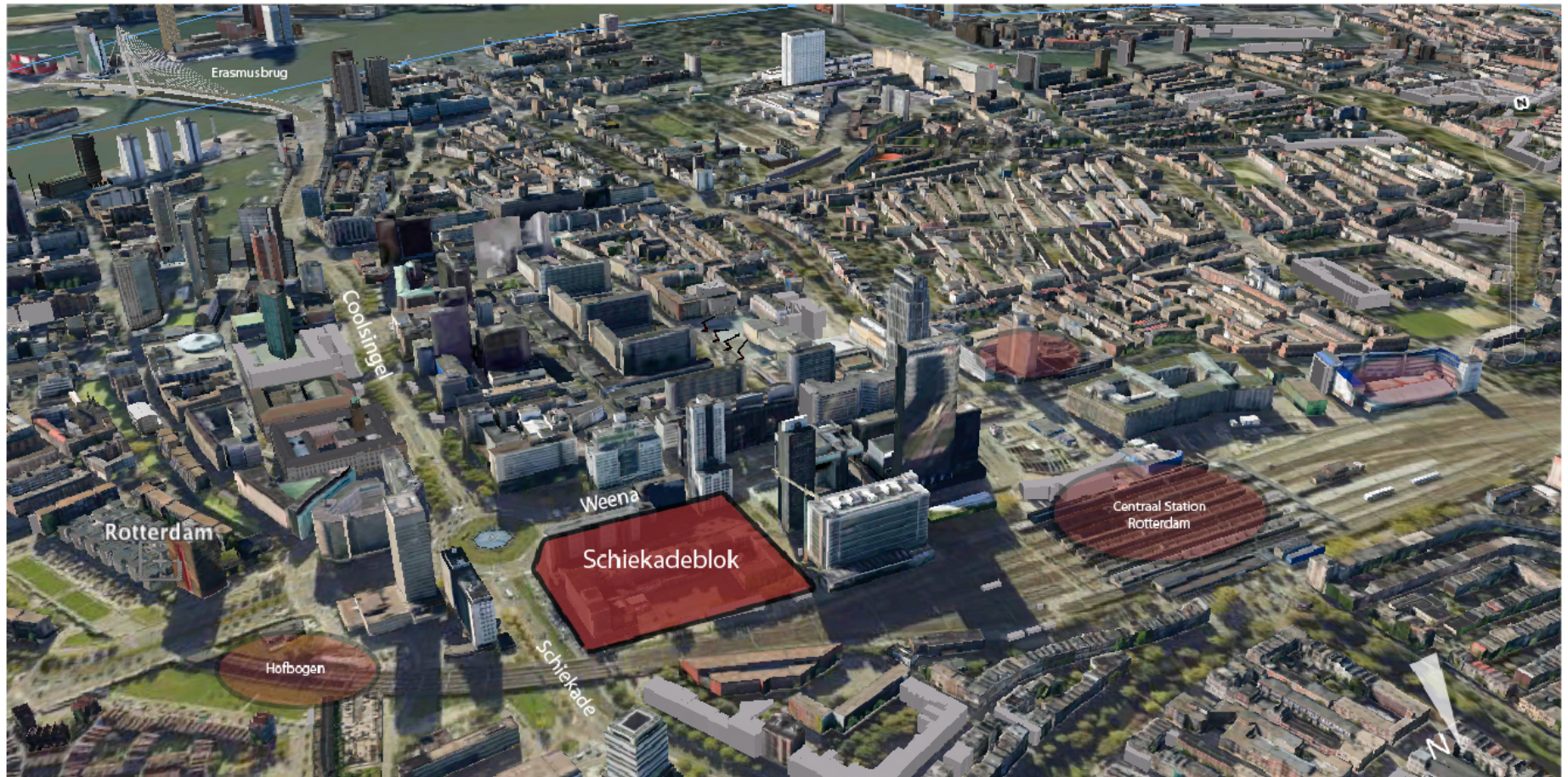
by LSI Project Investment

2010 Workshop High Rise Buildings 'Most Attractive Design'





Ontwerpopgave TALL



Locatiebeschrijving

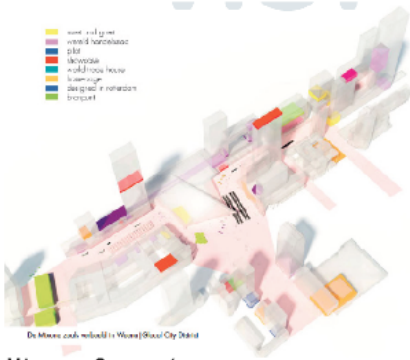


Gebouwwontwikkelingen



Team CS

Nieuwe Centraal Station



Mixte Concept



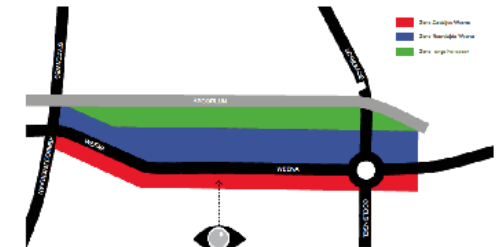
Locatiebeschrijving



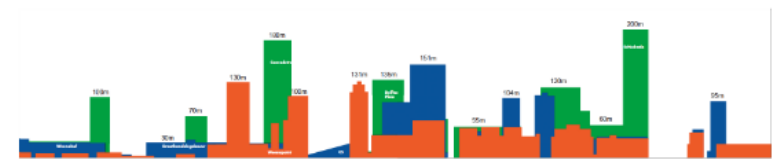
Planontwikkeling Hofbogen



Ontwikkelgebieden tot 2020



Zicht op skyline Centraal District Rotterdam vanuit het zuiden



Couliссе-werking van de Weena



Betekenis van de hoogbouw
Impact op de stad



Haalbaarheid
en
Duurzaamheid

Programma

Winkels (& showcase)	15.000 m2
Congress	13.000 m2
Casino	34.000 m2
Kantoren	140.000 m2
Clubs	1.000 m2
Hotel	23.000 m2
Woningen	23.000 m2
Transferruimten	8.000 m2
Restaurant	4.000 m2
Installaties	12.000 m2
Bruto vloeroppervlak	273.000 m2
parkeerfaciliteiten	90.000 m2
Totaal	363.000 m2



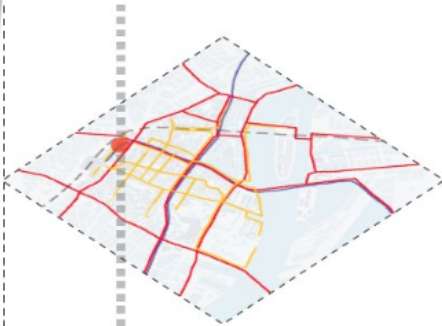
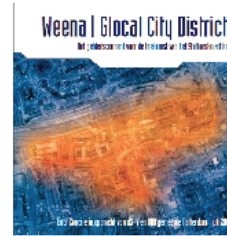
Ontwerp van kernen
van het gebouw



High-rise Typologien



Compacte en rationele
gebouwen



Mobiliteit



"Ecologie"



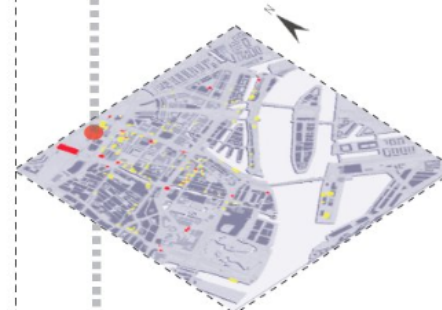
Hoogbouw gebo



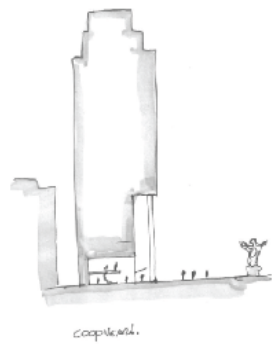
High-rise zones (hoogte)



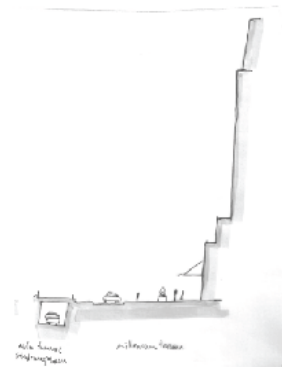
Winkelgebied



Ontmoetingsruimtes



Coopveart



Milenium Toren

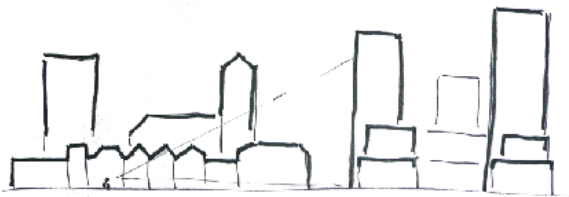


Delftse Poort

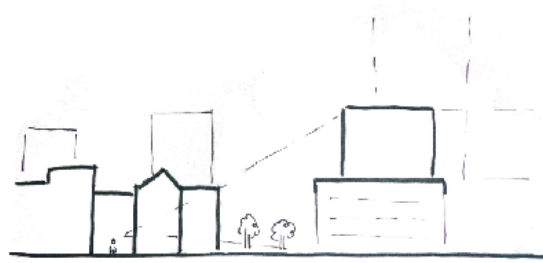


Weena Centre

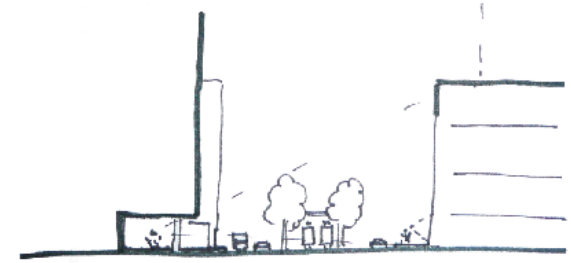
GEBOUWPROF | ELEN



Relatie met gehele wijk / stad



Relatie doorgaande wegen / herkenning in de wijk



Relatie straat en omringende gebouwen

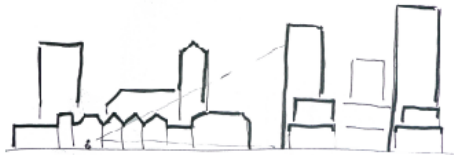


x lagen
hoogbouw
Wonen, Werken,
Hotel, Conferentie

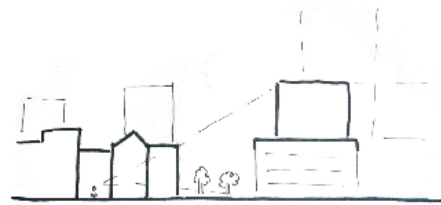
4 lagen
Stedelijk Wonen / Werken

4 lagen
Stedelijk Weefsel

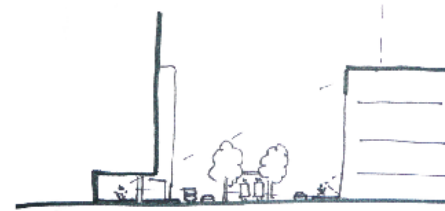




Relatie met gehele wijk / stad



Relatie doorgaande wegen / herkenning in de wijk



Relatie straat en omliggende gebouwen



x lagen
hoogbouw
Wonen, Werken,
Hotel, Conferentie

4 lagen
Stedelijk Wonen / Werken

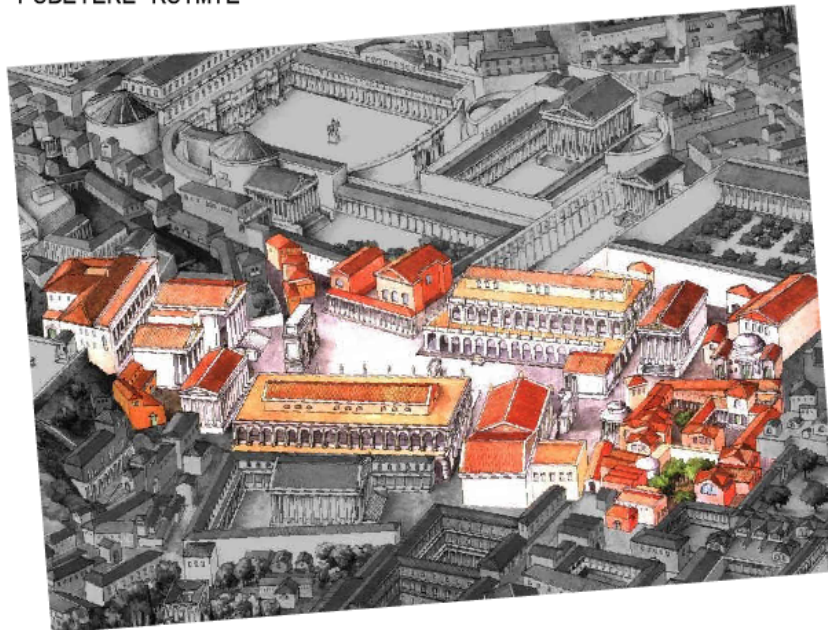
4 lagen
Stedelijk Weefsel



Hoofdvraagstuk: Op welke manier kan ik publieke ruimte toevoegen aan een actieve plint zonder de gebruiktskwaliteit van het gebouw te verminderen?



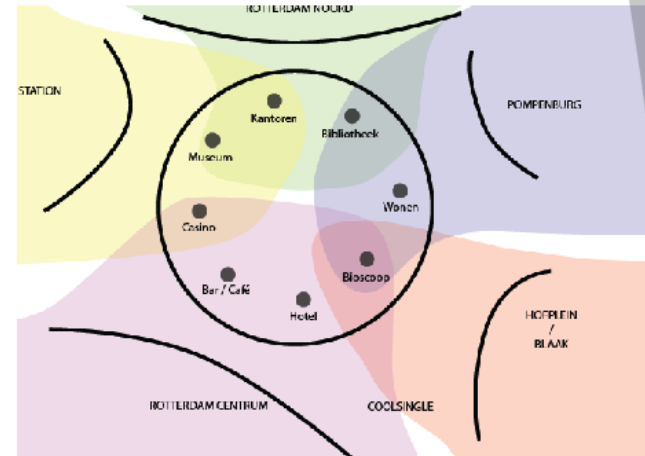
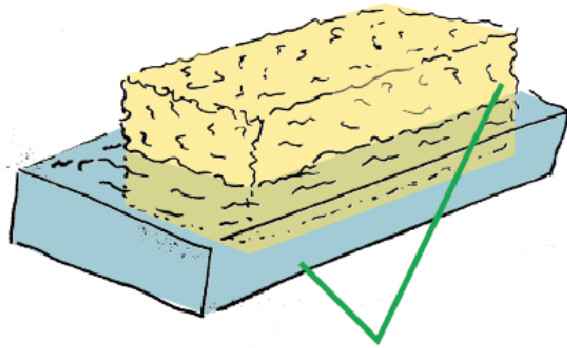
SAMENLEVING IN DE
PUBLIEKE RUIMTE



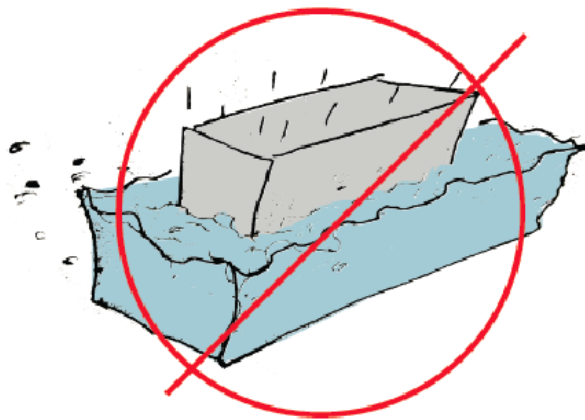
Forum Romanum (509 v. Chr.)



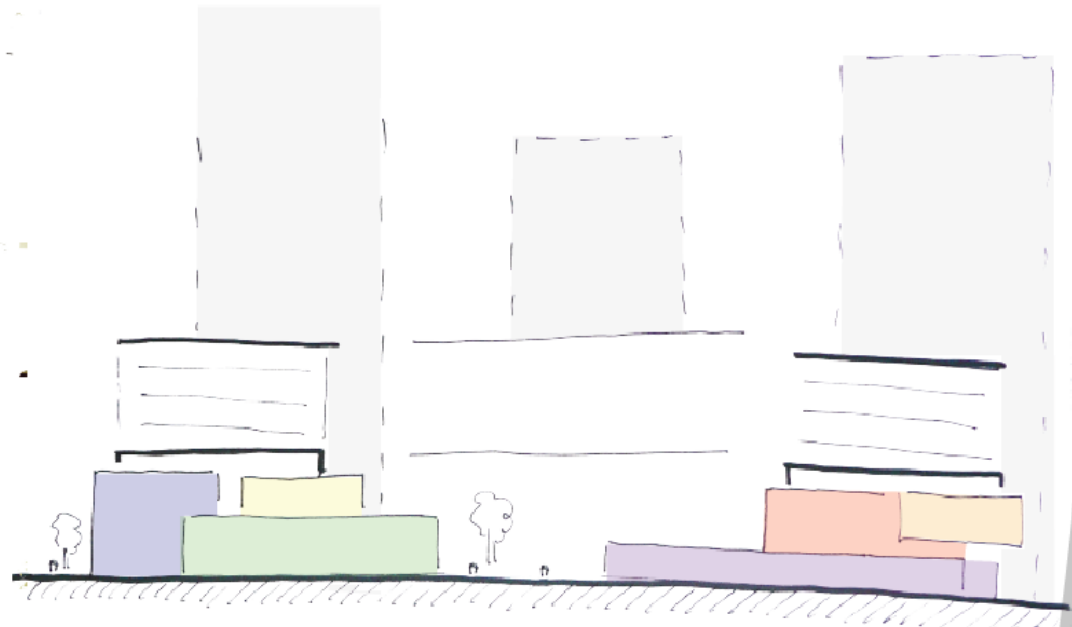
20 EEUWEN OUD DECOR
GIRO D'ITALIA



FUNCTIEVERDELING



'SPONS-CONCEPT'



PUBLIEKE PLINT ALS BASIS



SINGLE ROTTERDAM

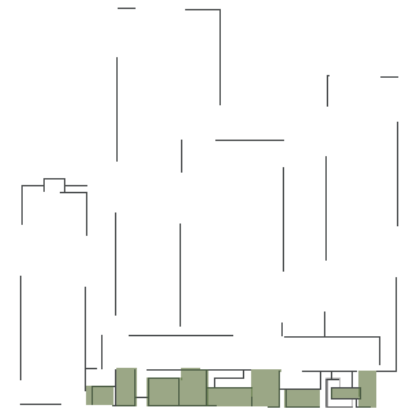


KRALINGEN



KEN YEANG - ECO MASTERPLANNING





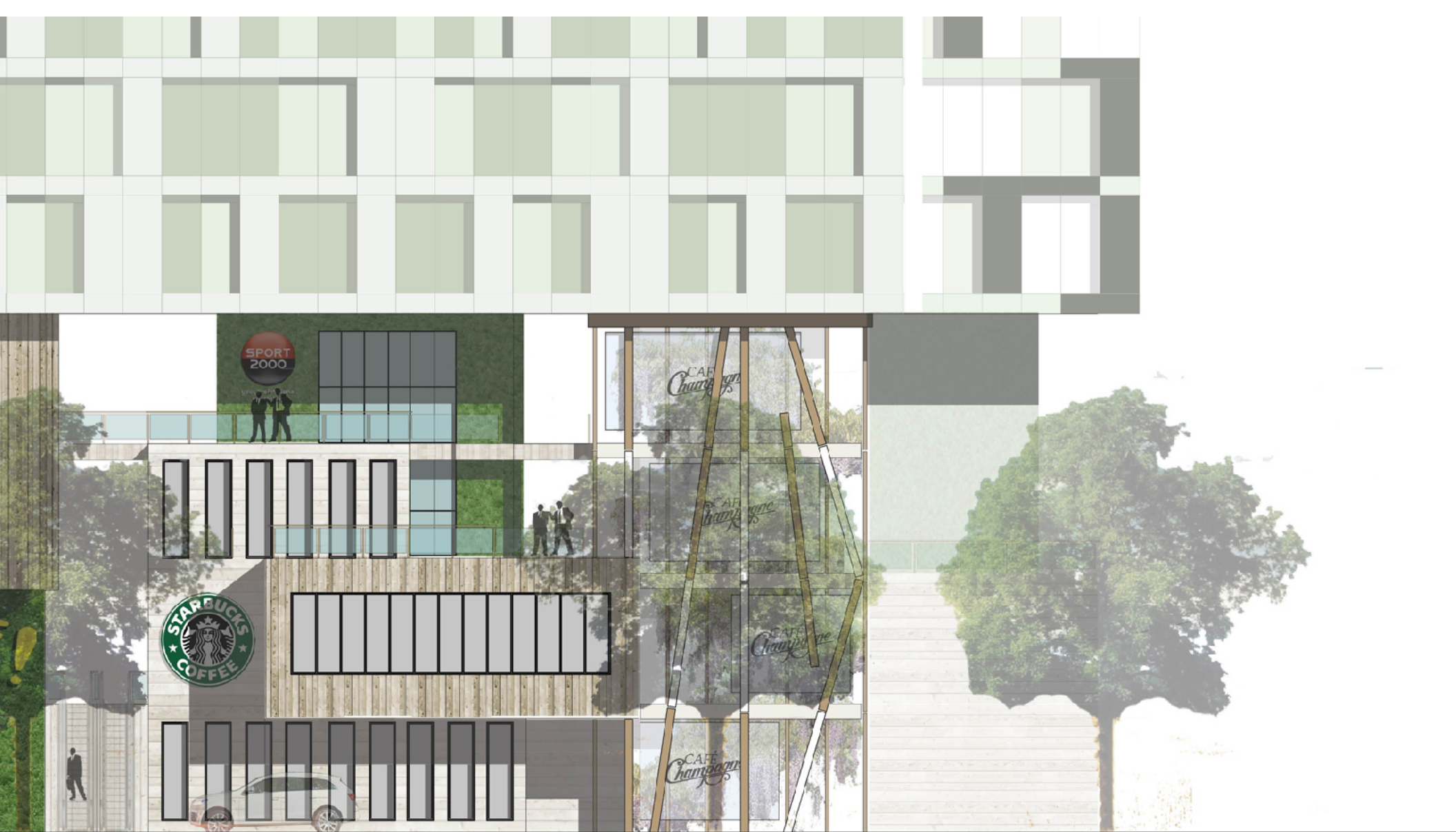
Active Plint



GEVELAANZICHT WEENA







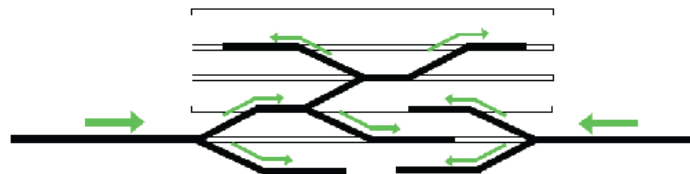
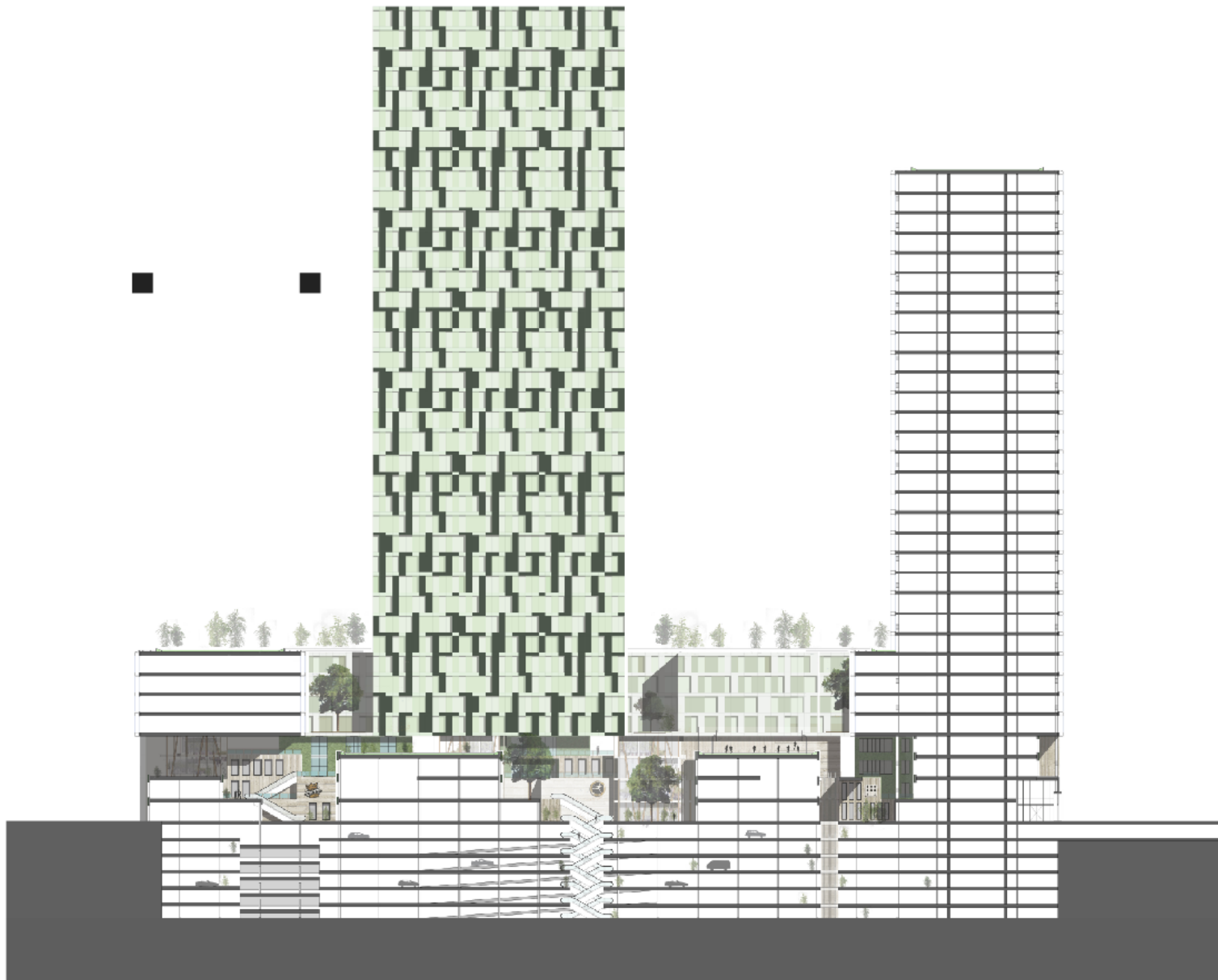


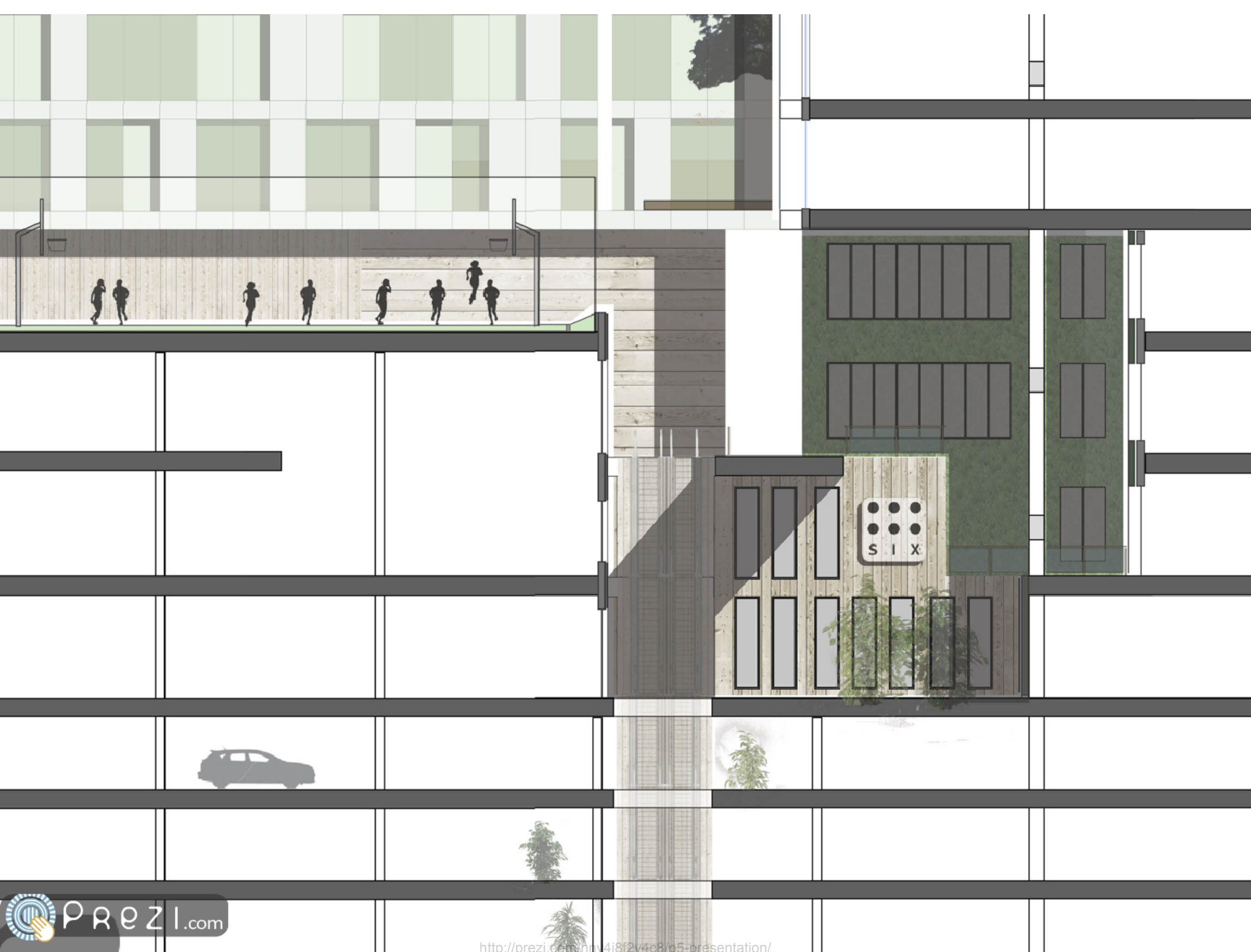


INTERIEUR CAFE MET UITZICHT
OP HOFPLEIN



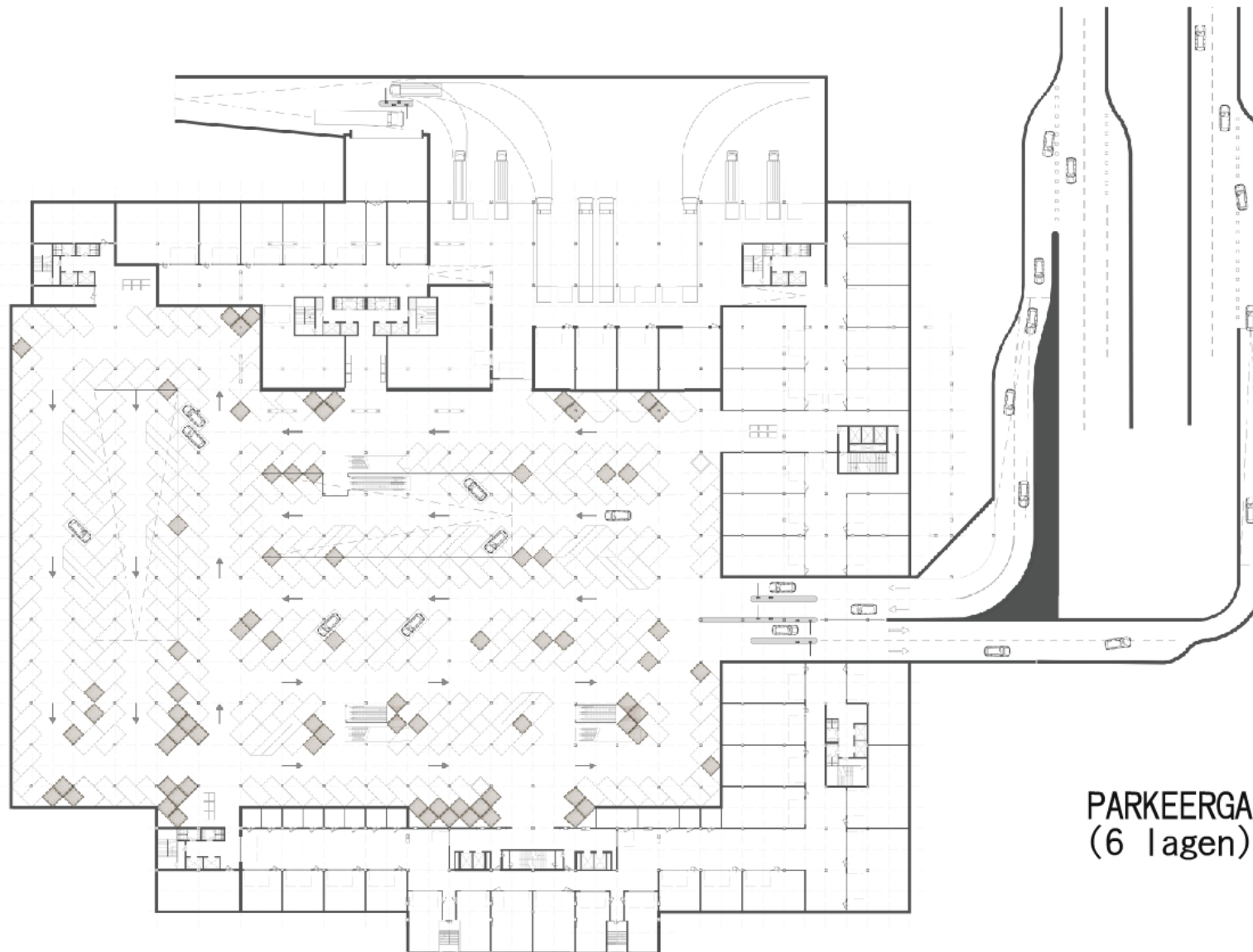
INTERIEUR CAFE MET UITZICHT
OP BINNENGEBIED





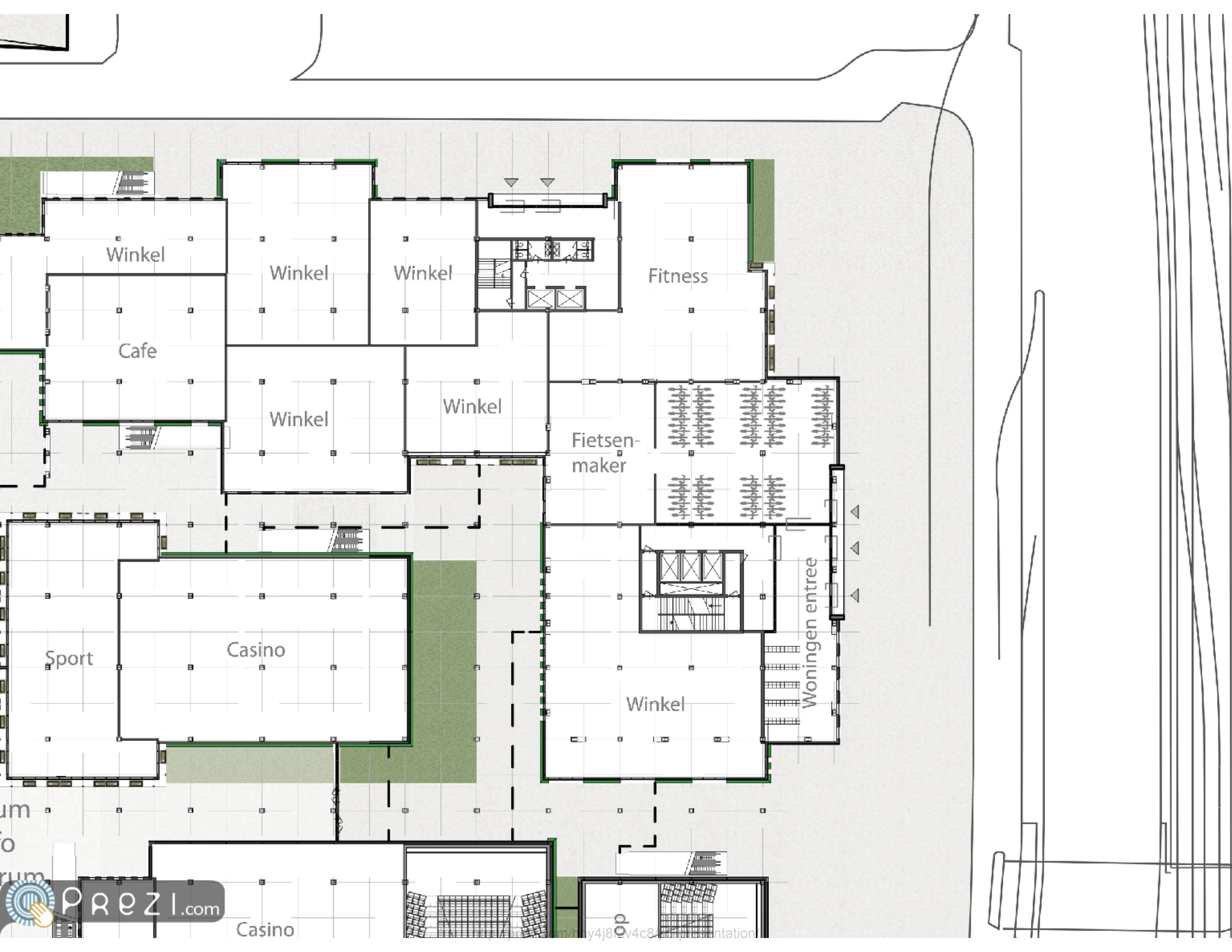






PARKEERGARAGE
(6 lagen)





Winkel

Winkel

Winkel

Fitness

Cafe

Winkel

Winkel

Fietsen-
maker

Woningen entree

Sport

Casino

Winkel

um
o
rum



Casino

Sport

Bioscoop

Bioscoop

Bioscoop

Bioscoop
Entree

Restaurant

Cafe

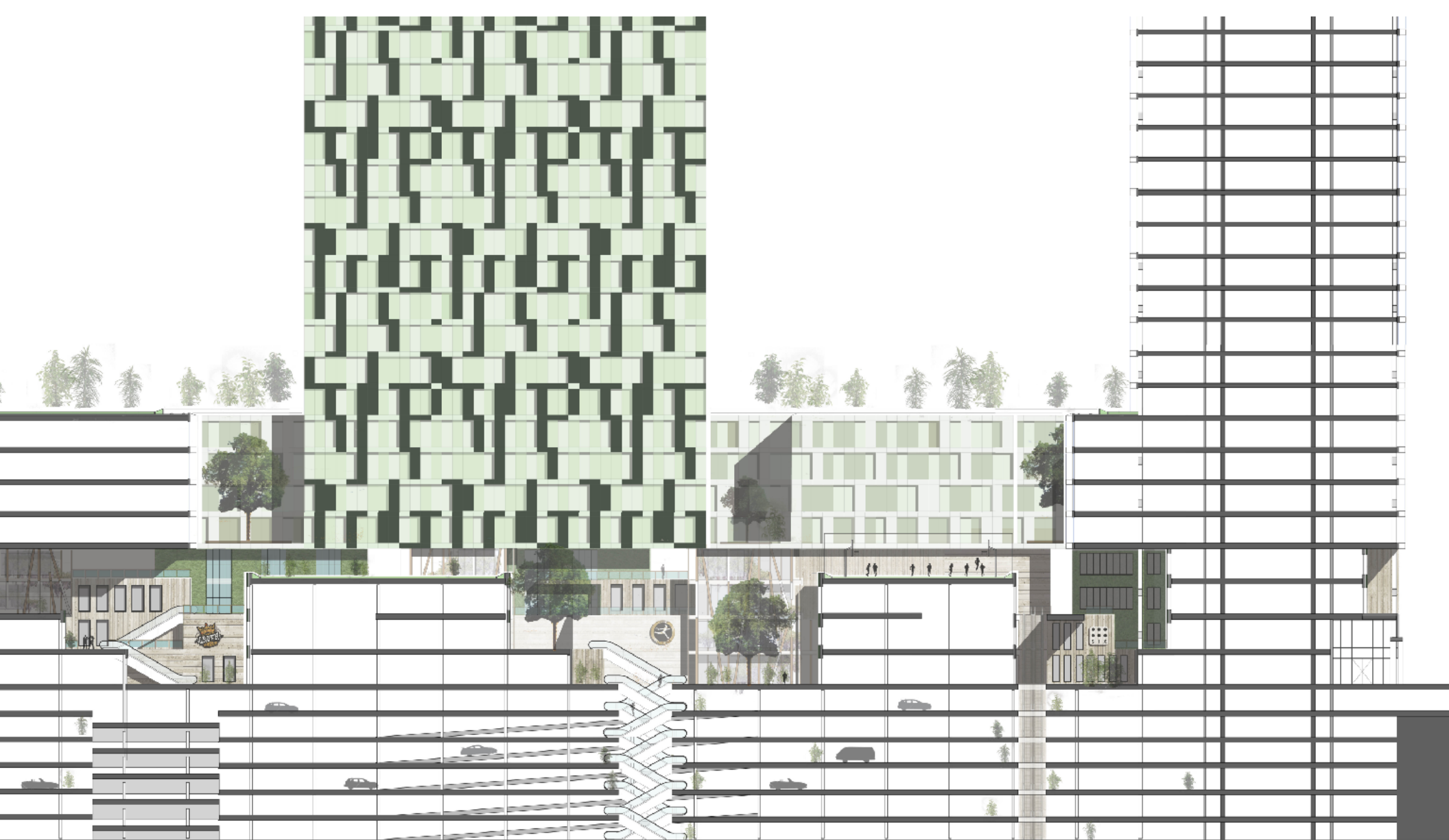
Restaurant

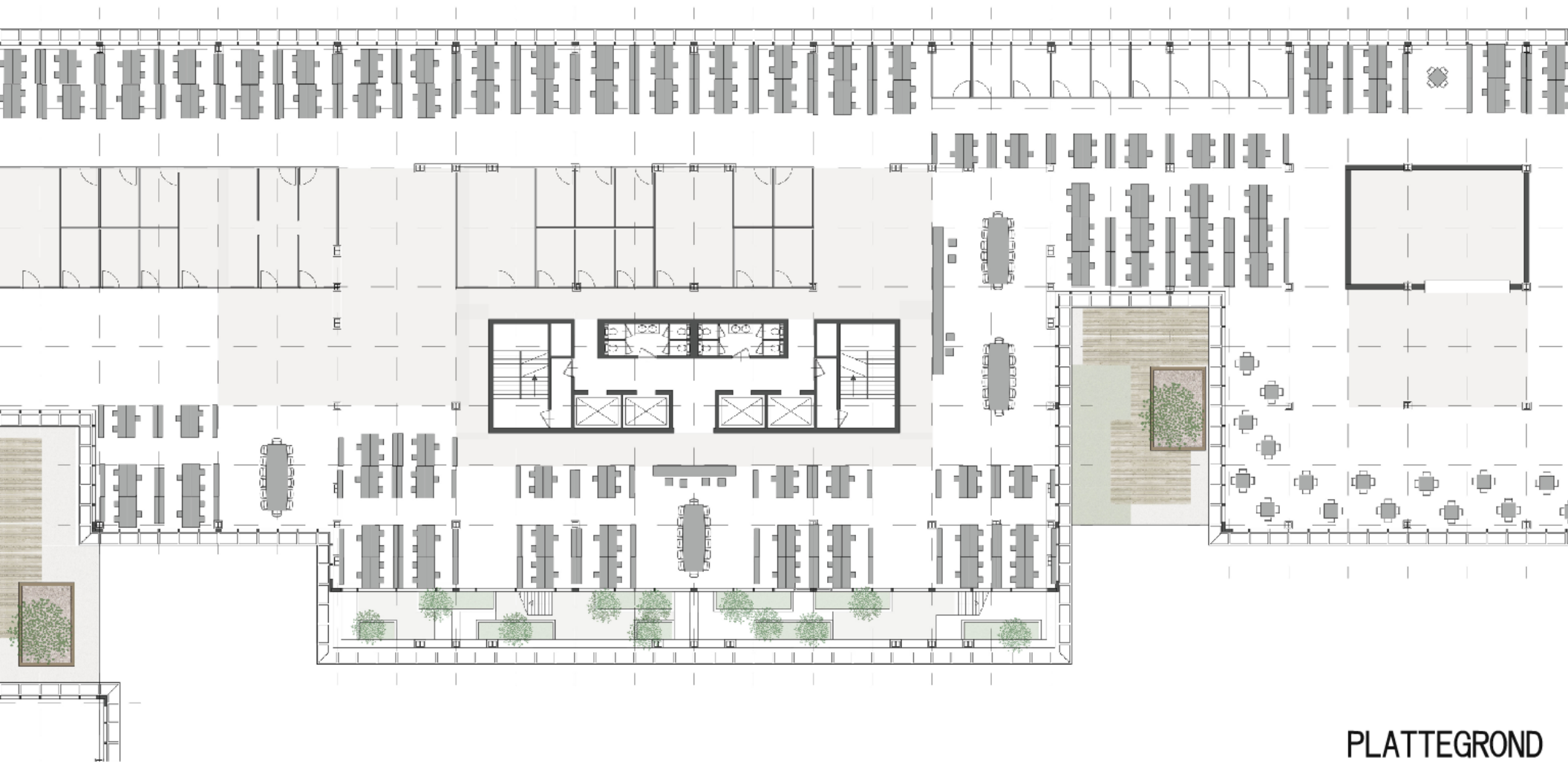
el Entree





GEVELAANZICHT WEENA





PLATTEGROND
KANTOORBAND



PLATTEGROND
KANTOORBAND



PLATTEGROND
KANTOORBAND



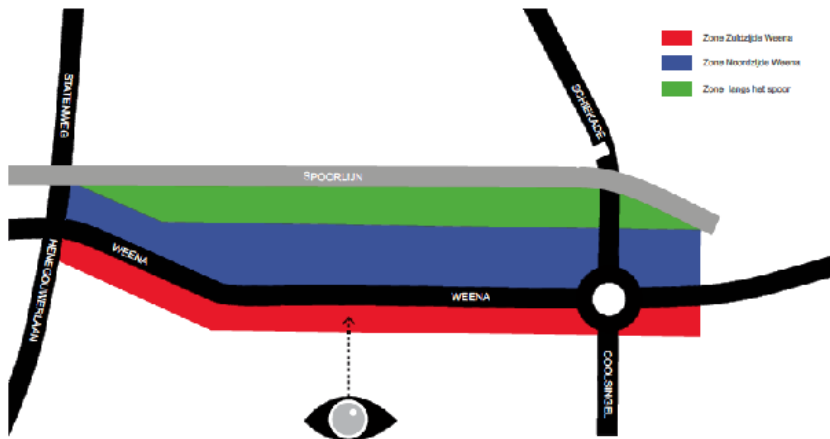
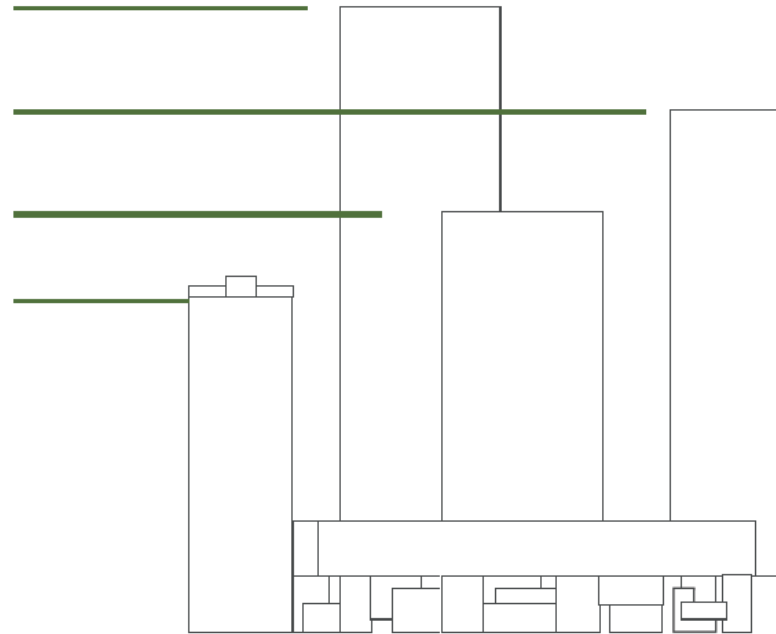
GEVELAANZICHT WEENA

Nieuwe generatie gebouwhoogtes

Hoogte Delftse Poort

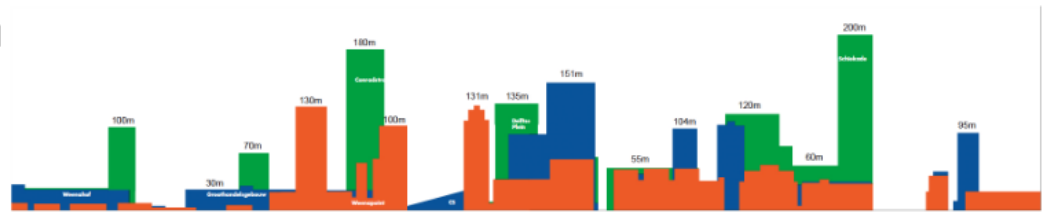
Hoogte Mileniumtoren

Bestaande Weena Tower

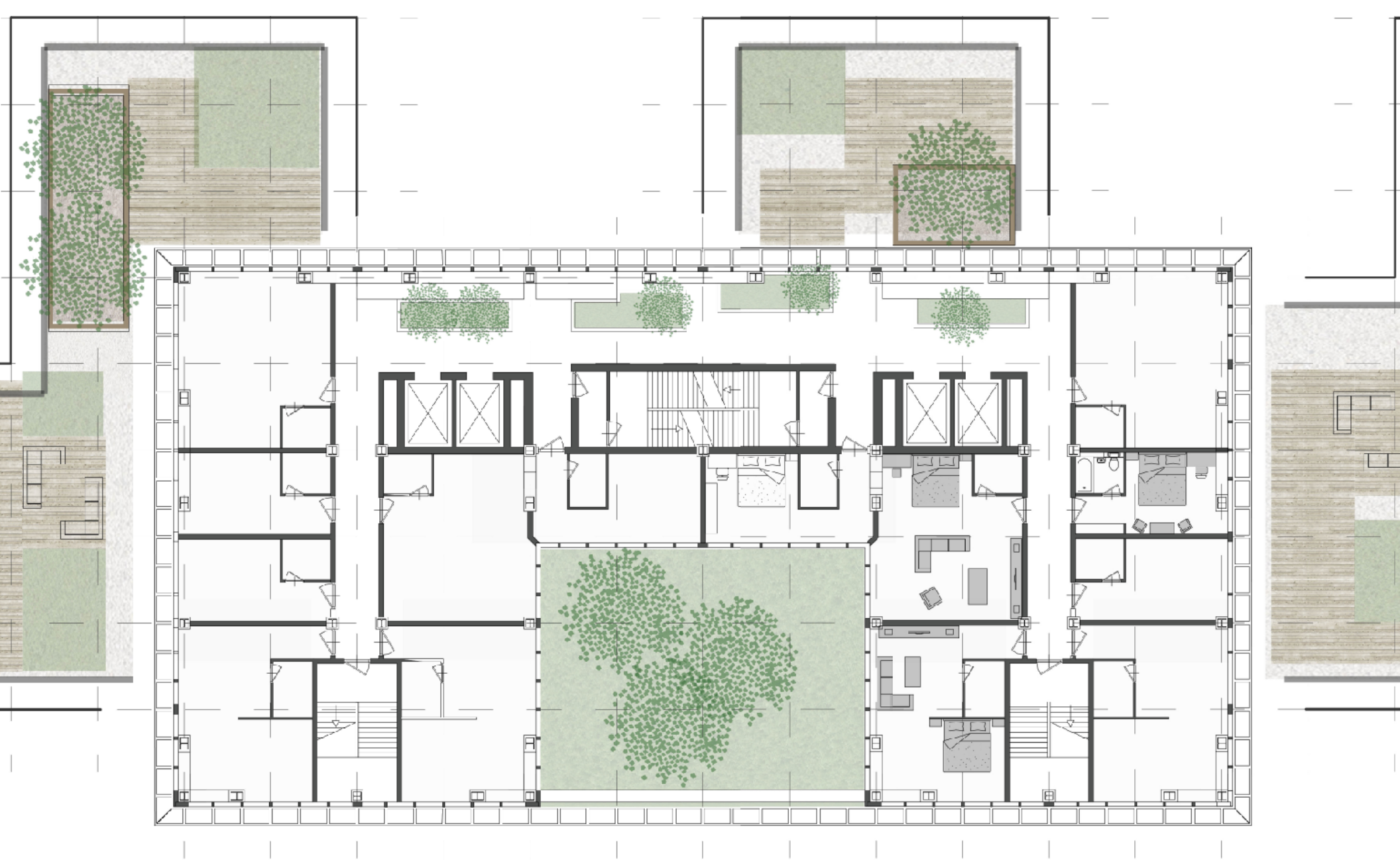


Zicht op skyline Centraal District Rotterdam vanuit het zuiden

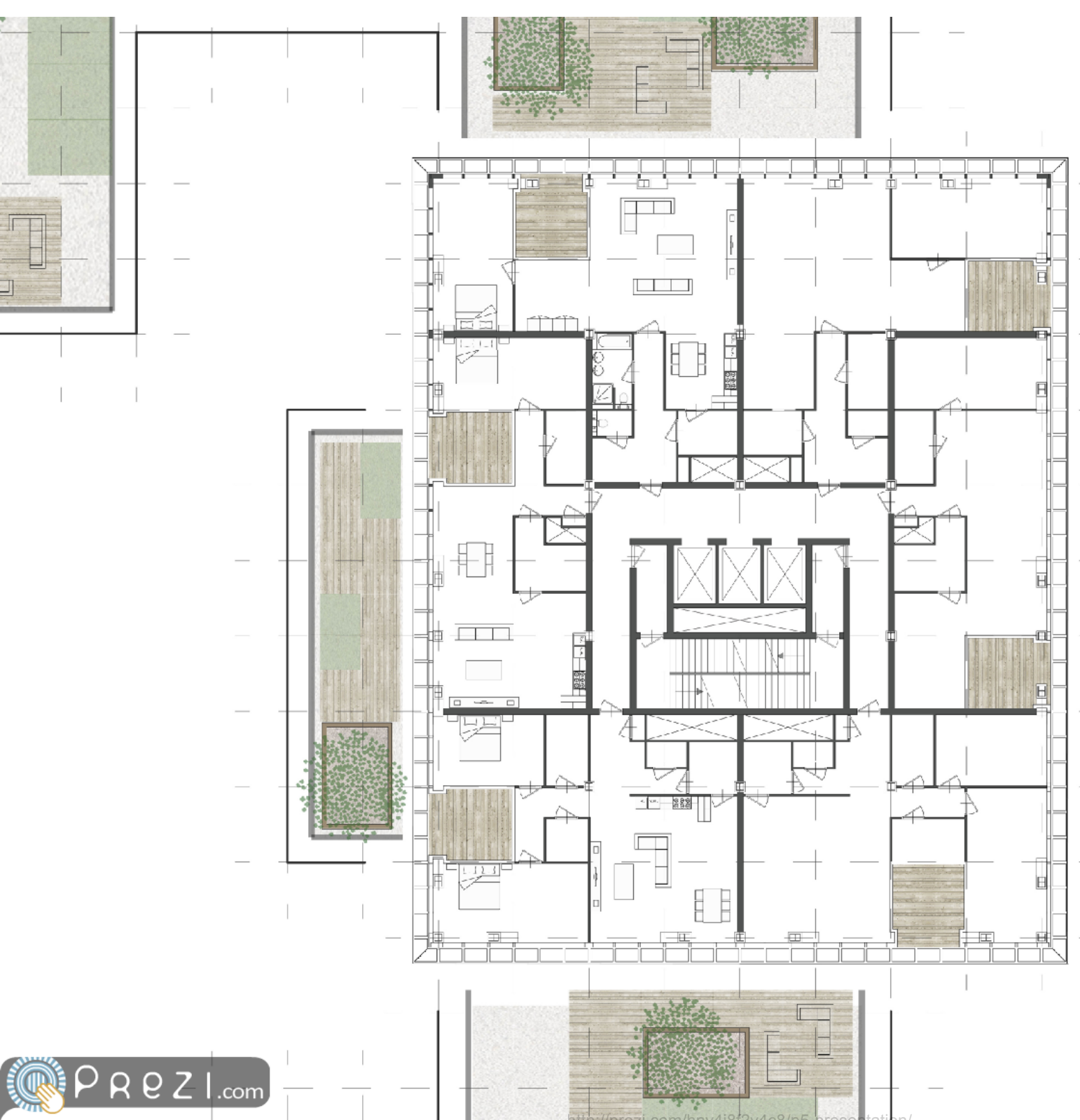
Relaties gebouwhoogte



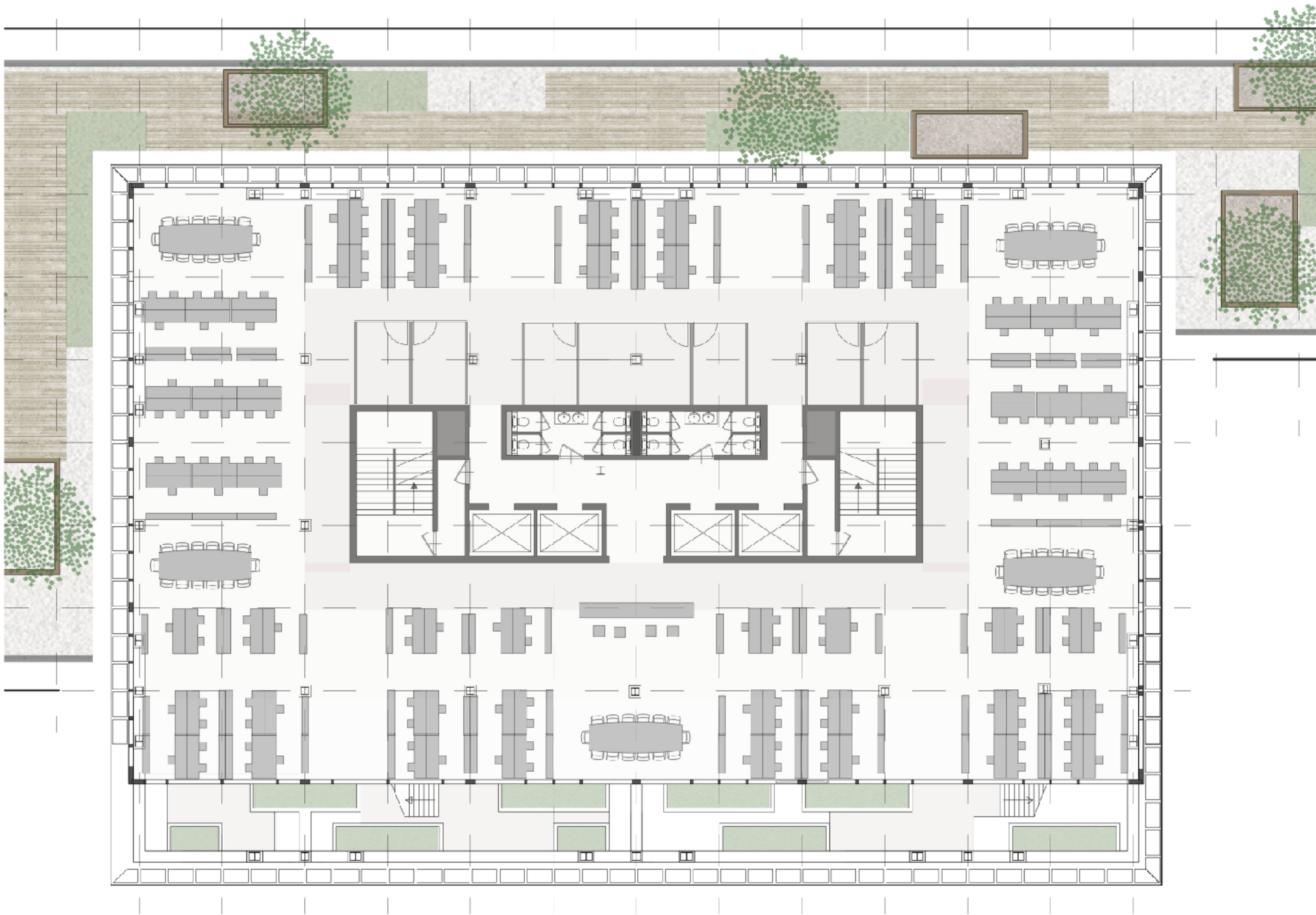
Coulisse-werking van de Weena



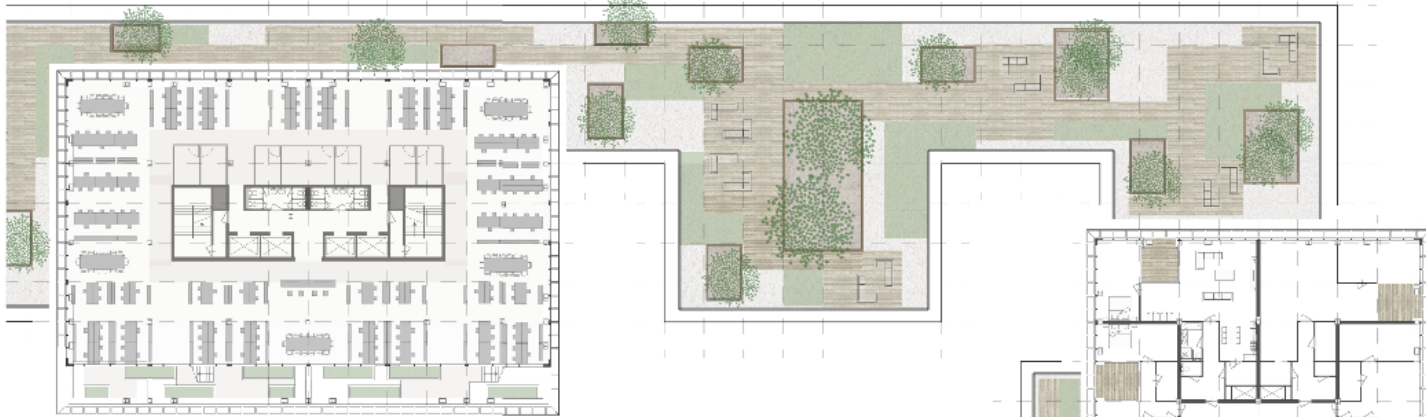
PLATTEGROND HOTEL



PLATTEGROND WOONTOREN



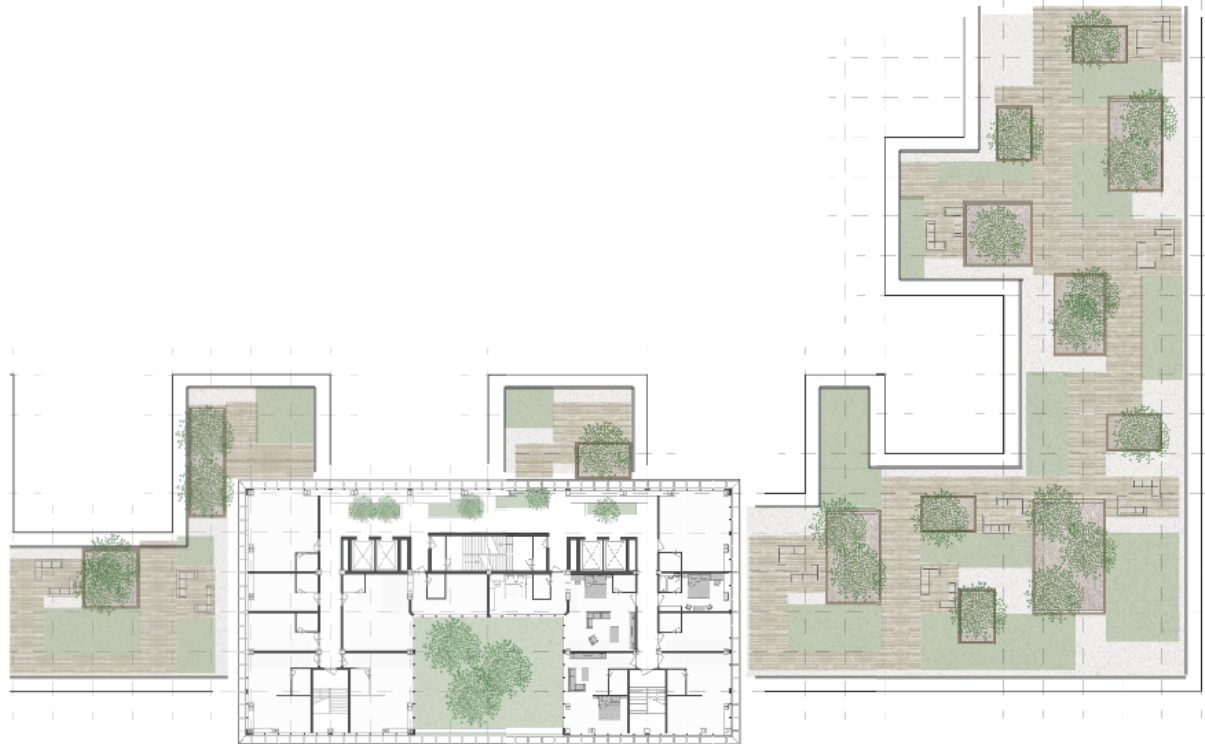
PLATTEGROND KANTOOR



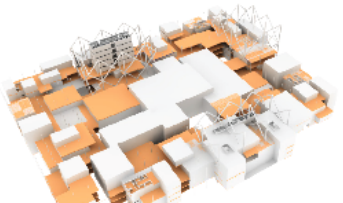
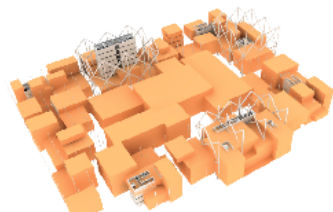
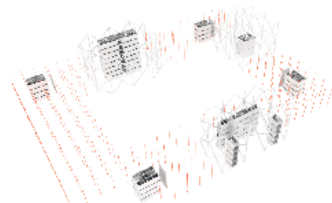
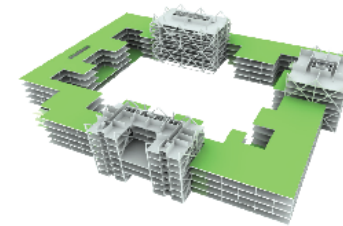
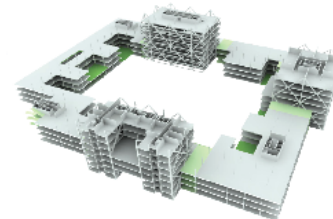
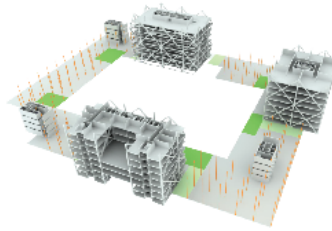
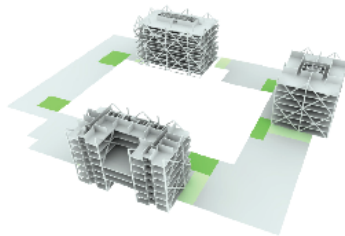
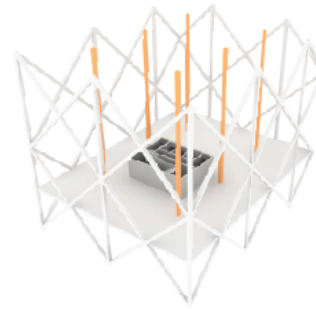
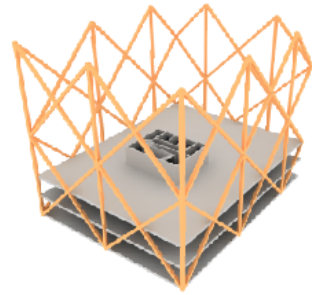
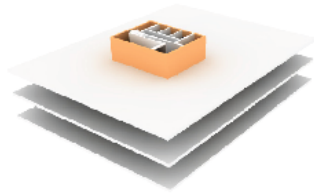
PLATTEGROND KANTOOR



PLATTEGROND WOONTOREN



PLATTEGROND HOTEL

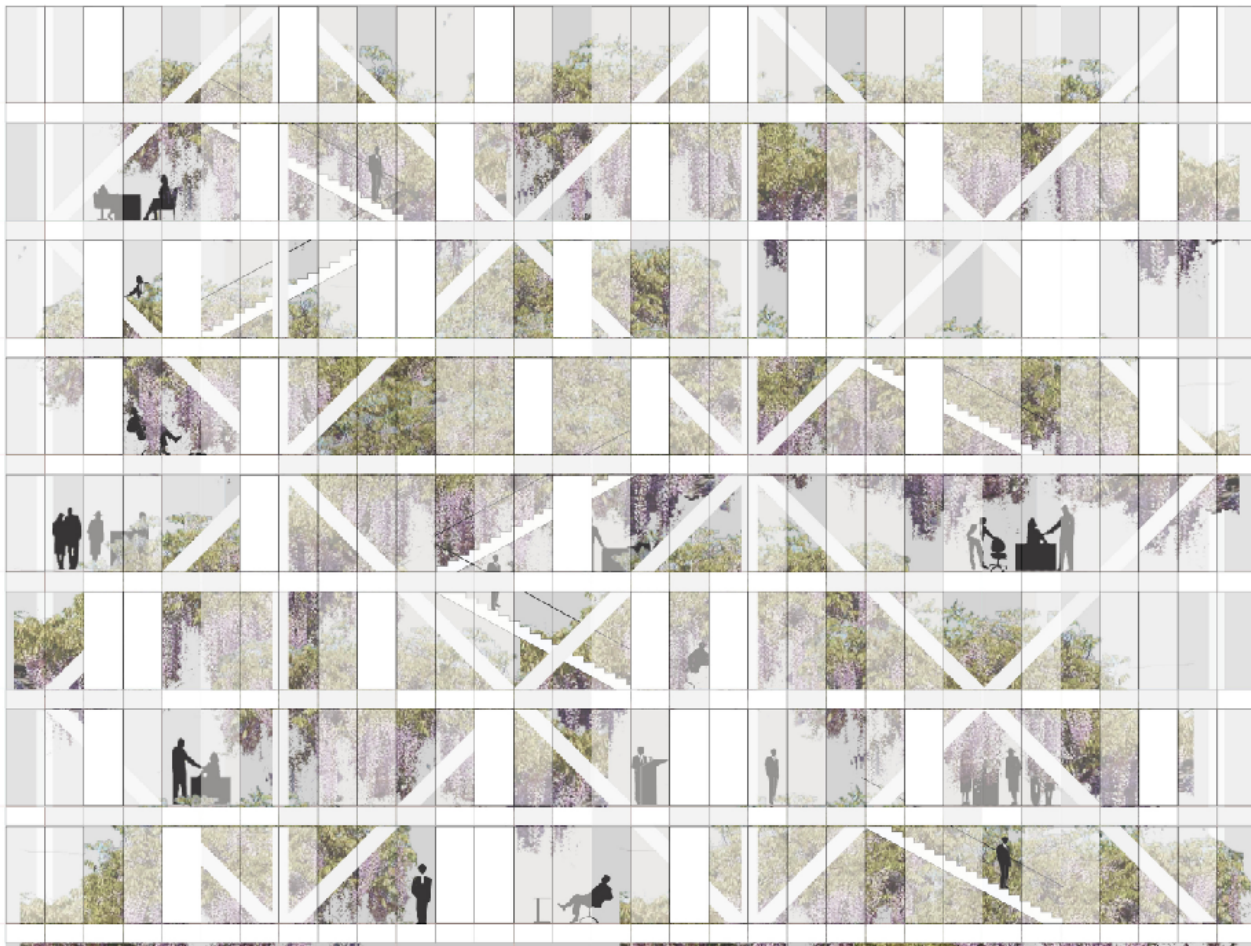


CONSTRUCTIEPRINCIPES

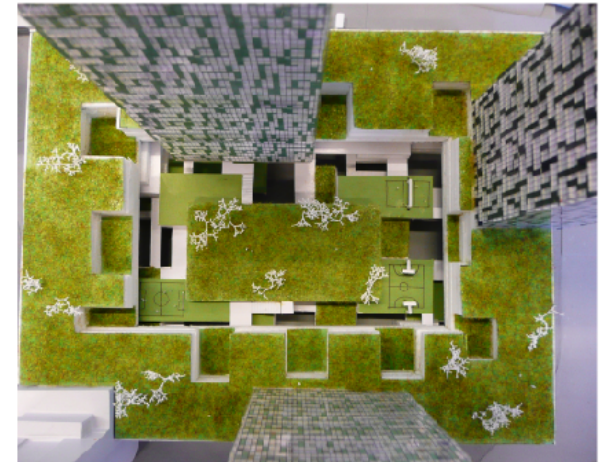
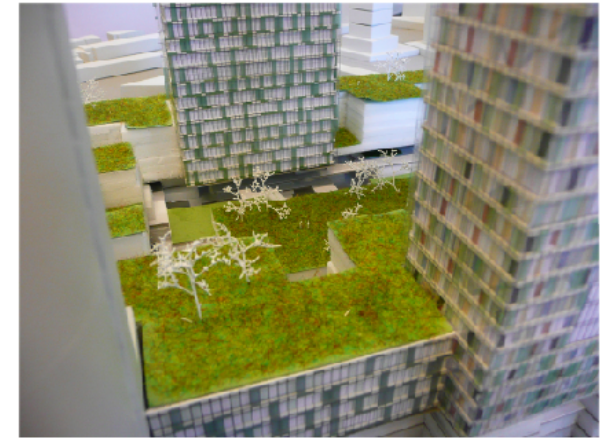


GEVELAANZICHT HOPPLEIN
GIRO D'ITALIA 2020

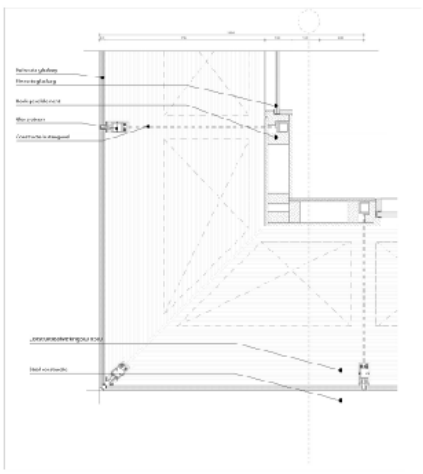
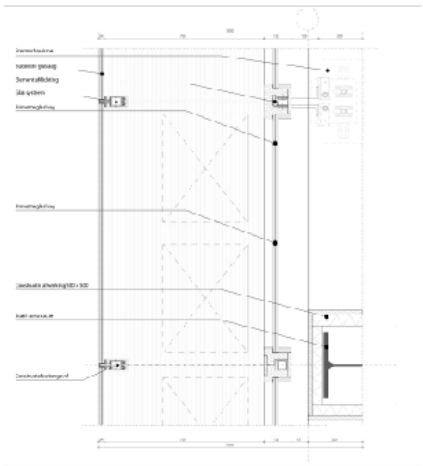




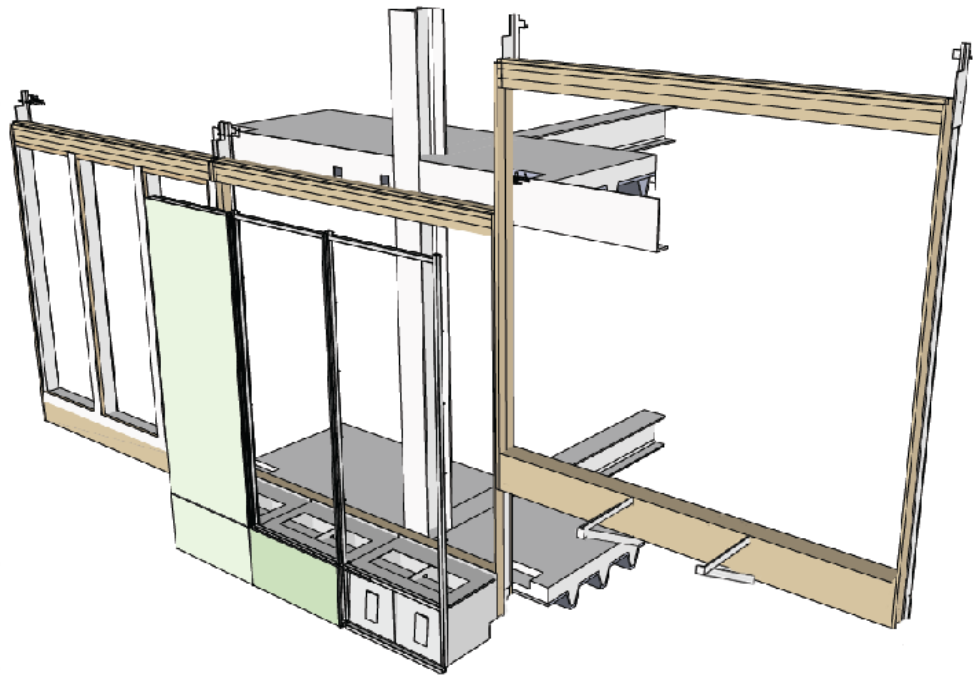
GEVEL PRINCIPE



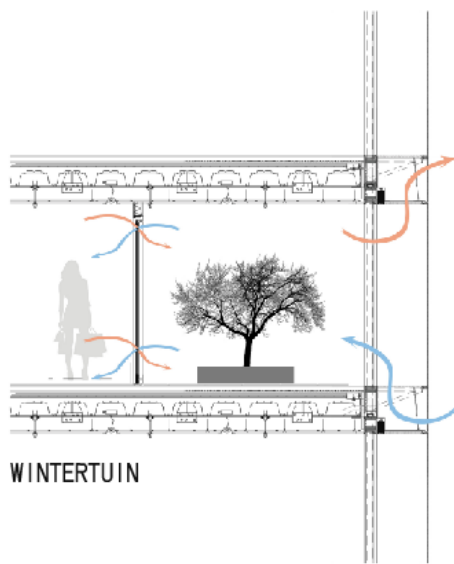
MODEL 1:500



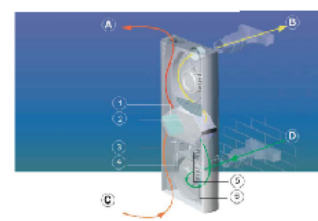
GEVELDETAILS
1:5



GEVELOPBOW



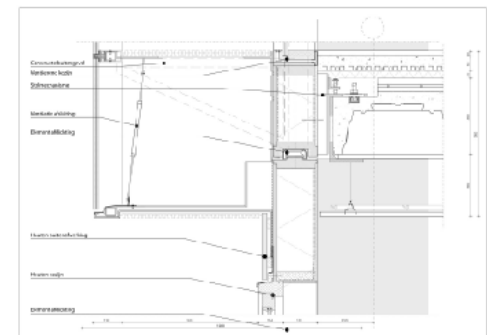
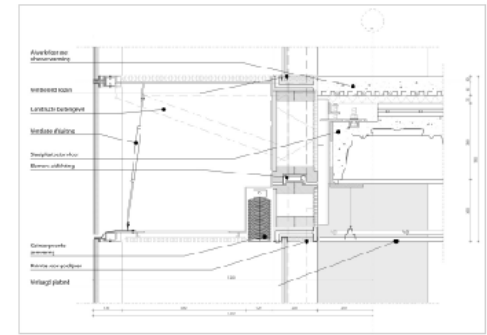
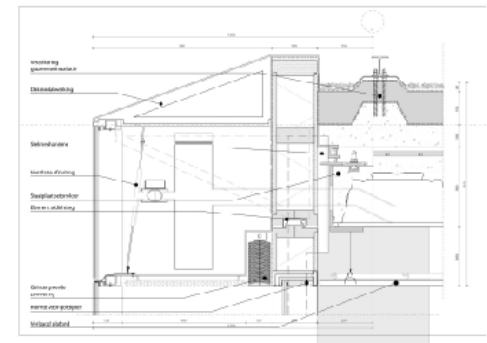
WINTERTUIN



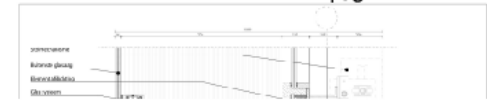
Legend:
1. Filter
2. Ventilation sensor
3. Temperature sensor
4. CO2 sensor
5. Temperature sensor
6. Fan motor

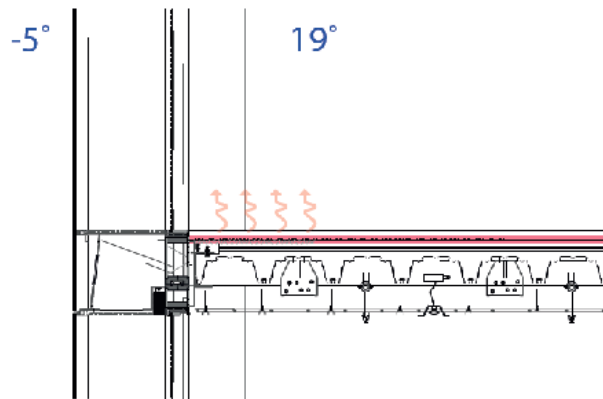
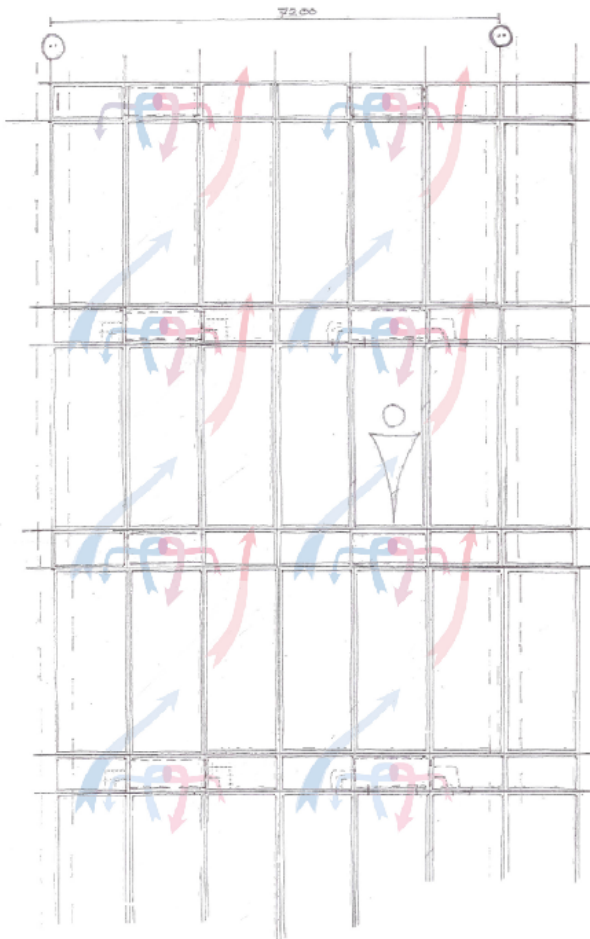
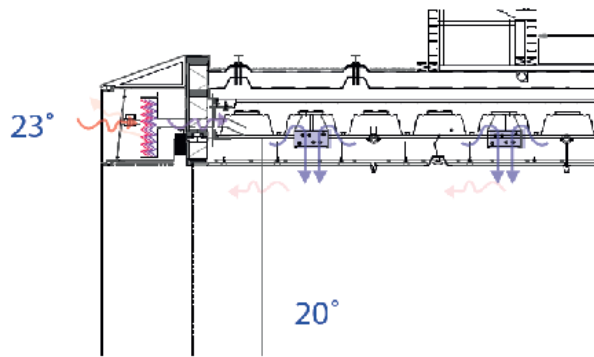
A. Inlet air from outside
B. Air from inside
C. Air from outside
D. Exhaust air

BREATHING WINDOW SYSTEM

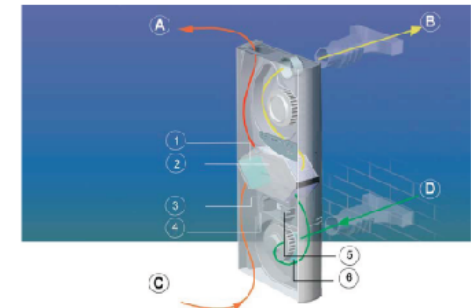


GEVELDETAILS
1:5



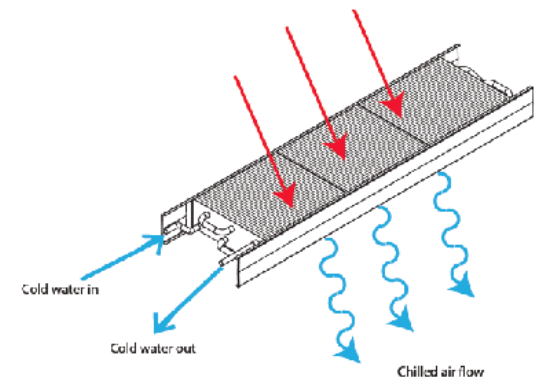


PASSIEVE SYSTEMEN

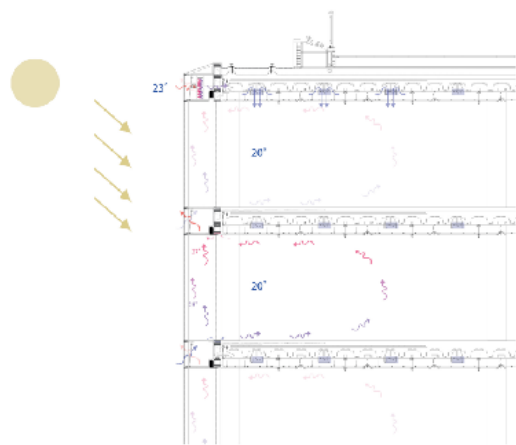


- Legenda
- 1. Filter
 - 2. Warmtewisselaar
 - 3. Temperatuur sensor
 - 4. CO₂-sensor
 - 5. Temperatuur sensor
 - 6. Fijnstoffilter
- A. Inblazen voorverwarmede lucht
 - B. Afvoer naar buiten
 - C. Afvoer gebruikte lucht
 - D. Toevoer buitenlucht

BREATHING WINDOW SYSTEM



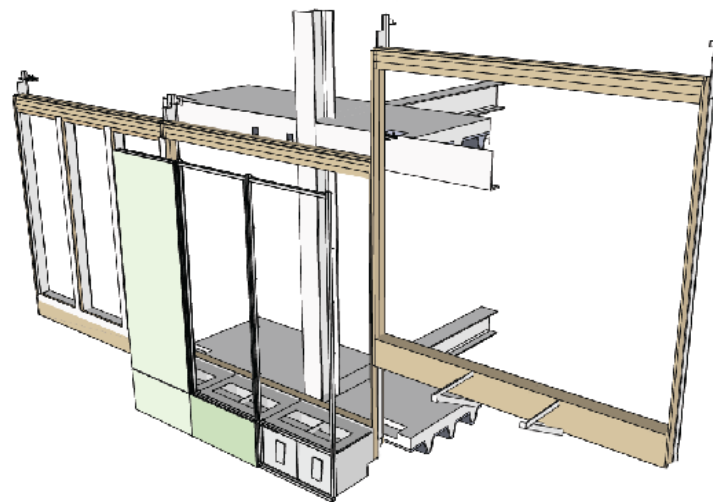
CHILL-BEAMS SYSTEM



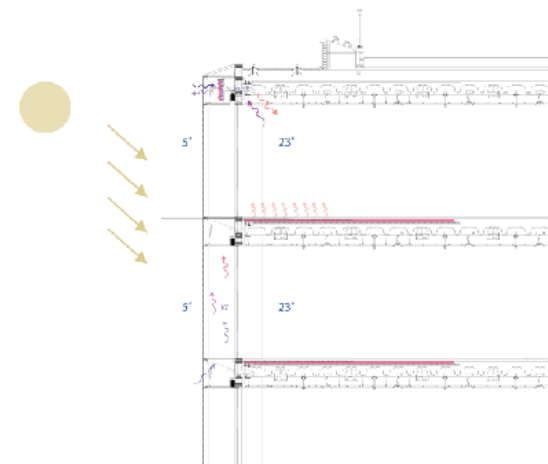
ZOMER - OVERDAG



ZOMER - NACHT



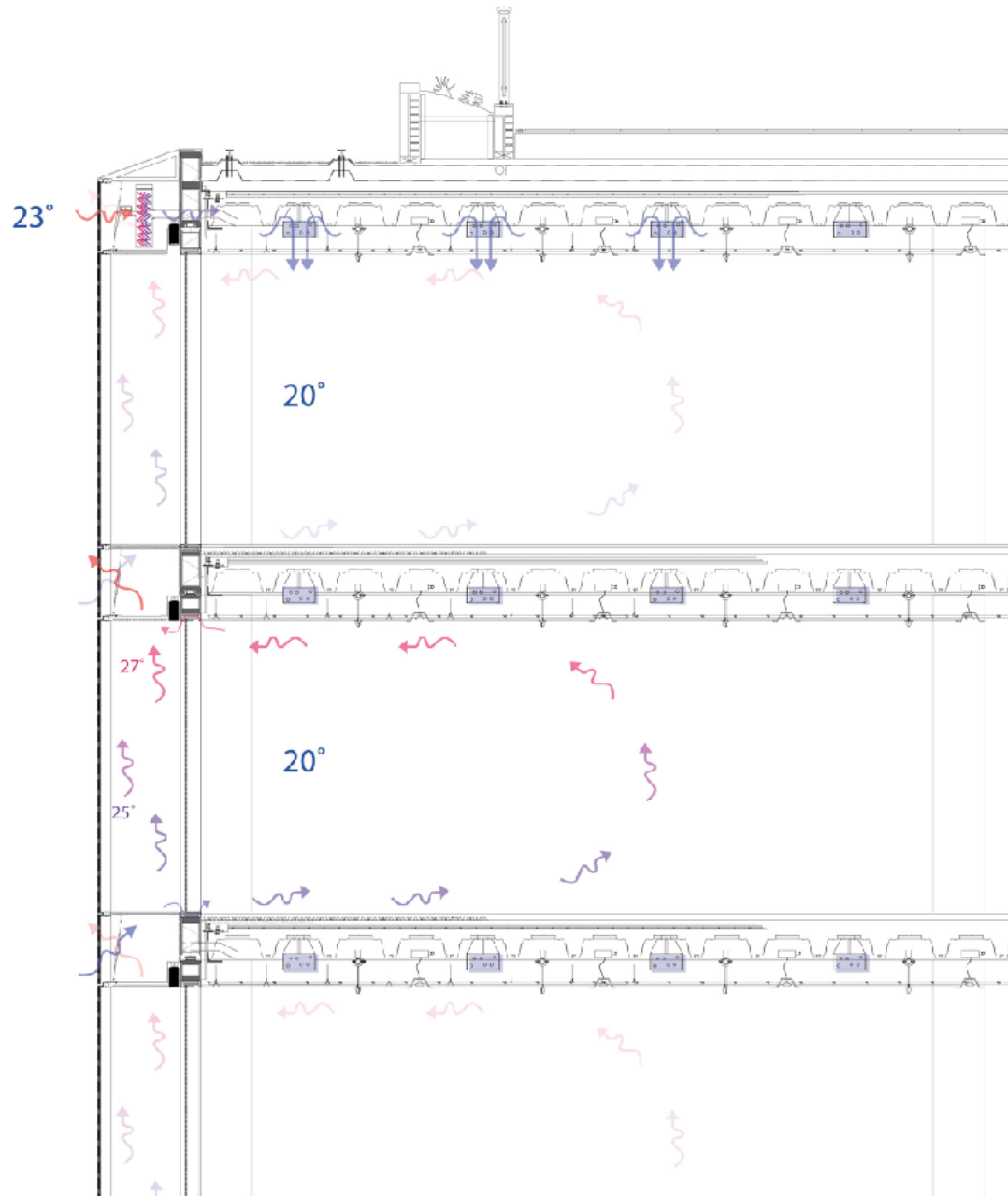
GEVELSISTEEM

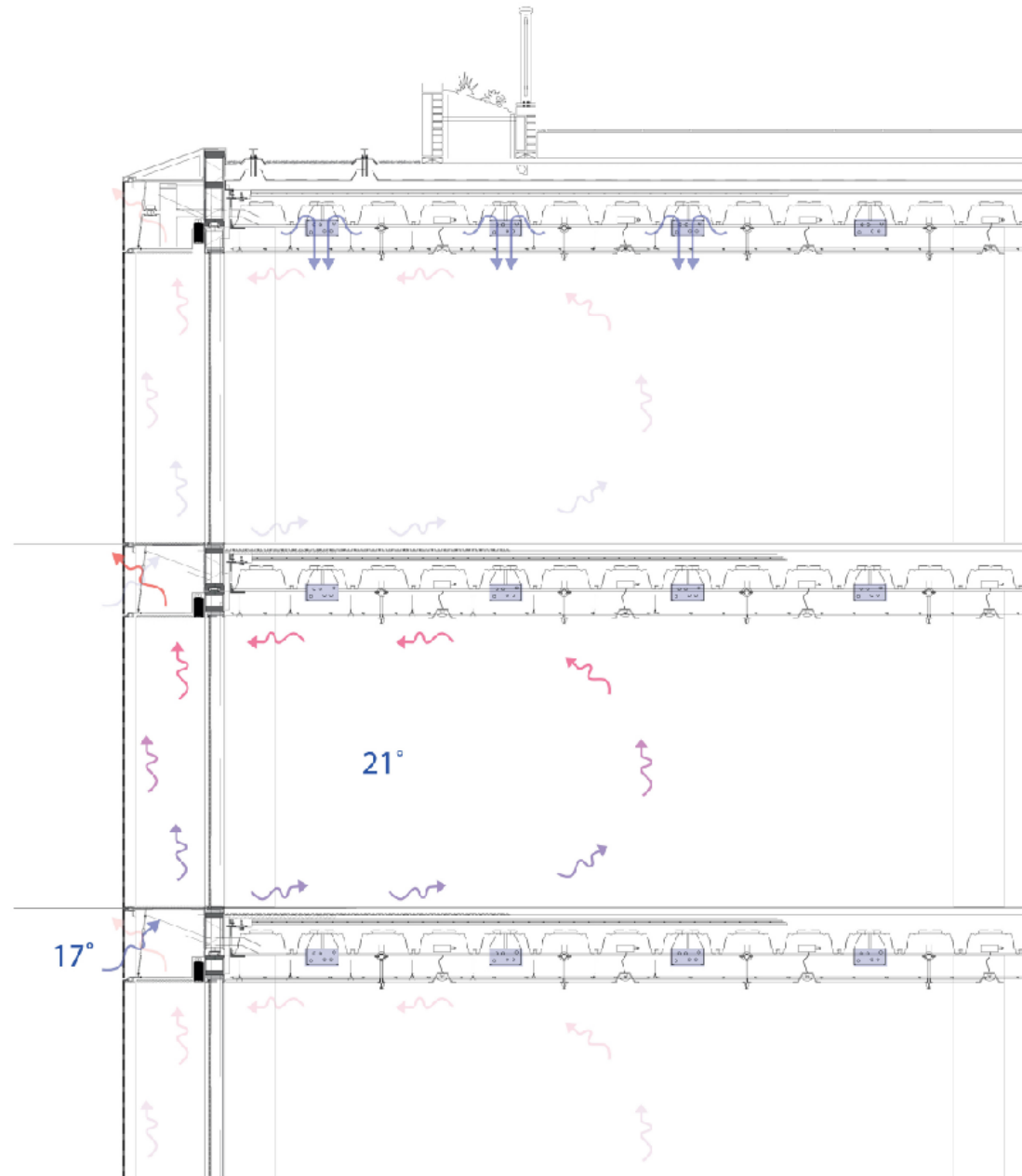


WINTER - OVERDAG

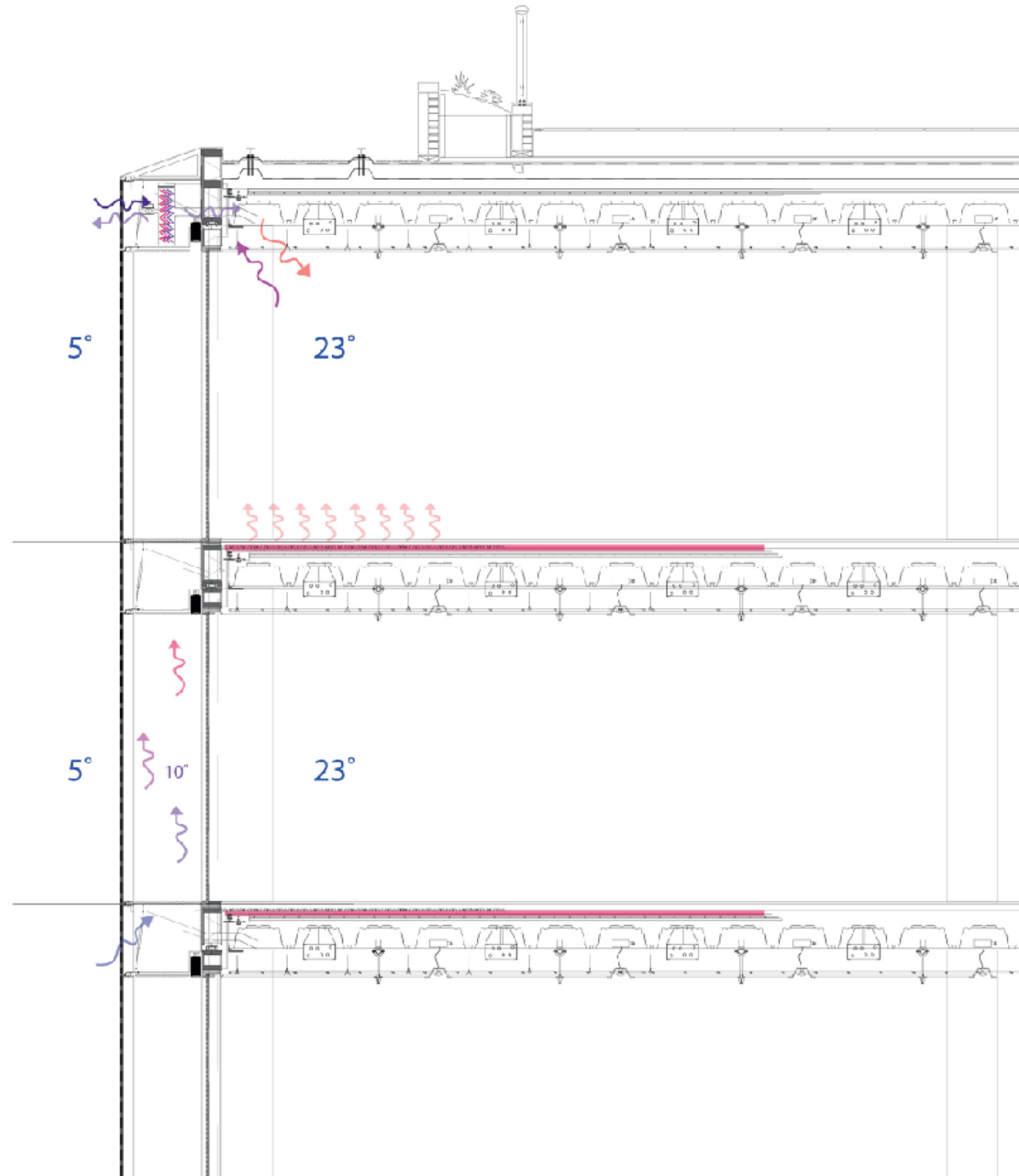


WINTER - NACHT





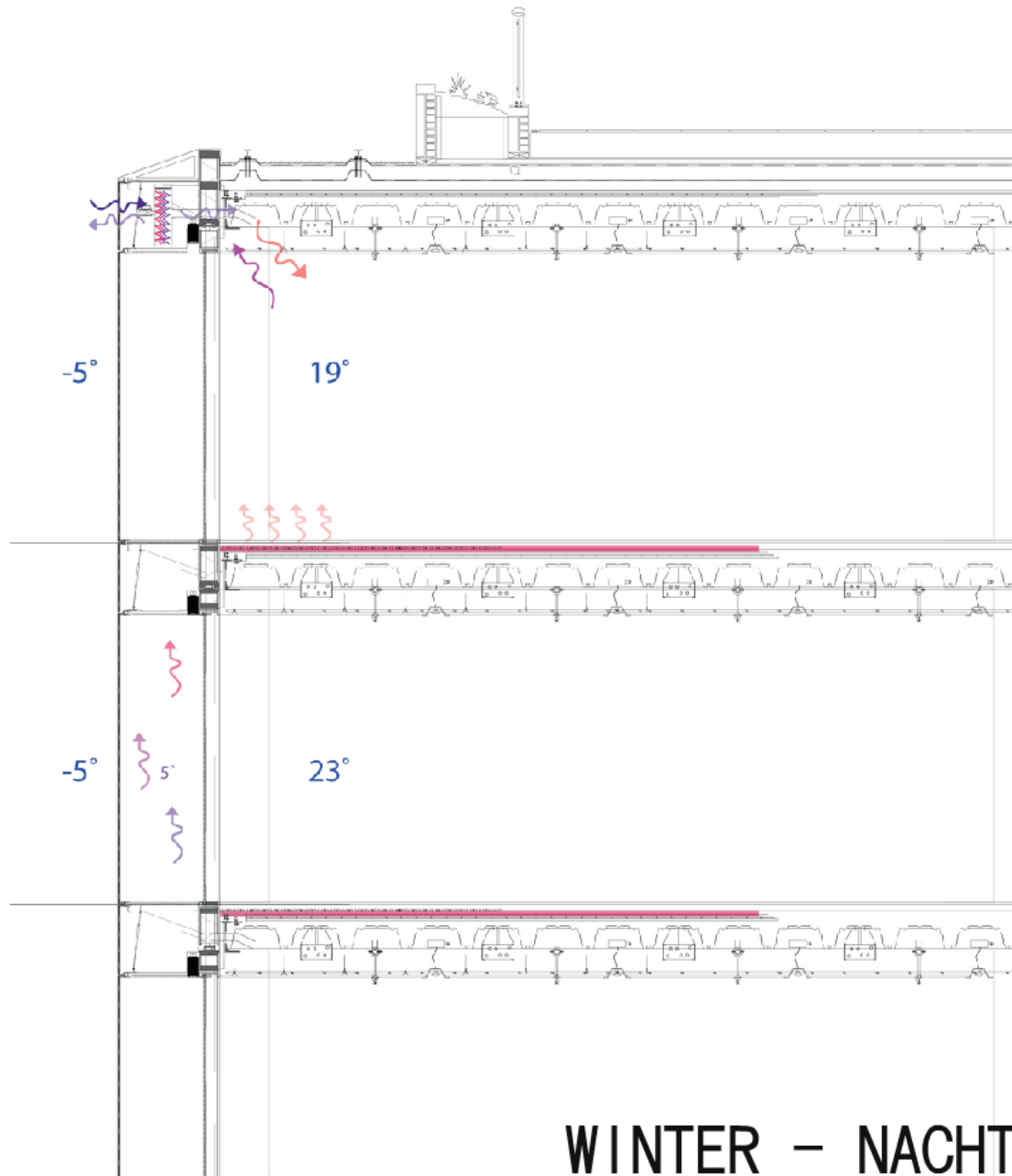
ZOMER – NACHT



WINTER – OVERDAG

TEEM

I R III III I
II R III
II R III
II R III



WINTER - NACHT

