

THE GUESTHOUSE IN THE VALLEY

a festive narrative for the countryside of Maastricht

Vasileios I. Chanis

TU Delft | Interiors, Buildings, Cities | “After the Party” Graduation Studio
P5 | 28th June, 2018

PART I
Maastricht as a festive countryside

I. Maastricht as a festive countryside



The countryside of Maastricht

I. Maastricht as a festive countryside



The valley of river Jeker

I. Maastricht as a festive countryside



Diorama: "the festive countryside"

PART II
Walking as a festive practice

II. Walking as a festive practice



Case I: The opening procession of the Heiligdomsvaart Festival

II. Walking as a festive practice



The procession in the countryside



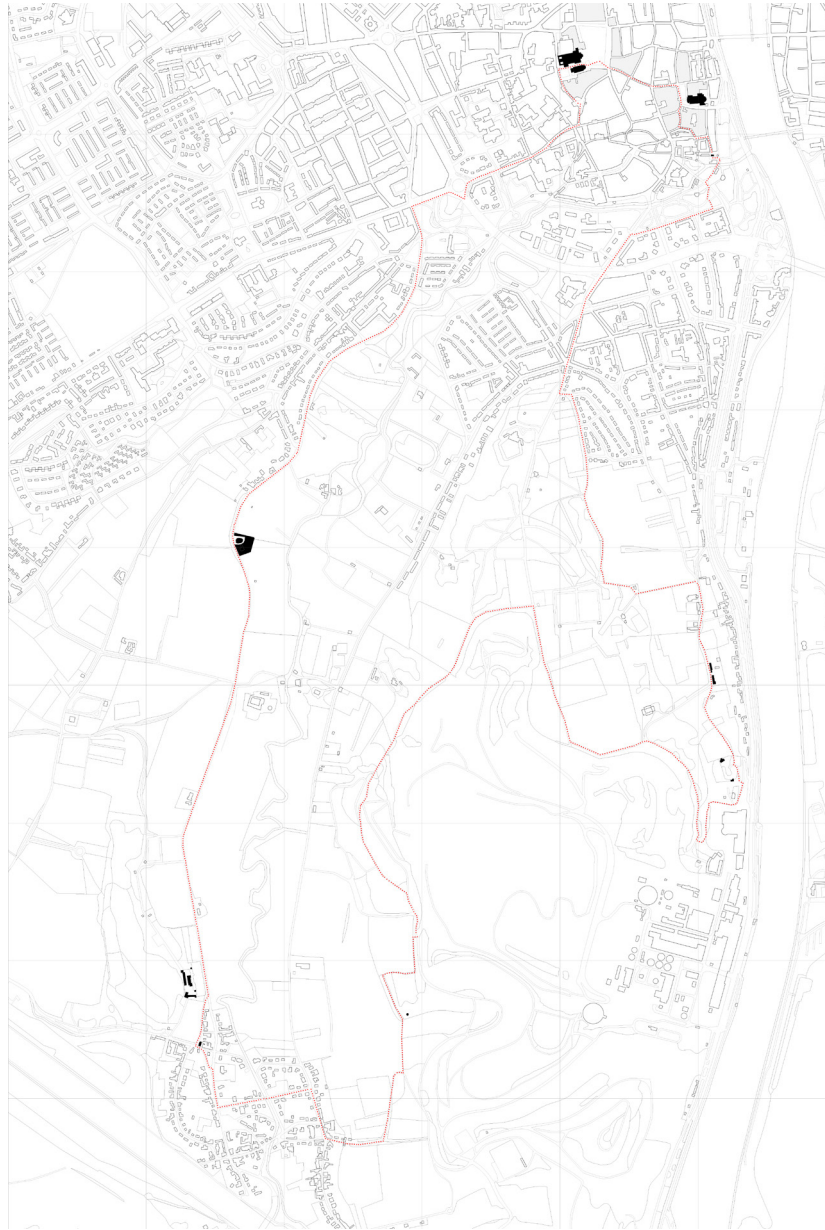
The procession enters St. Servaasbron



The opening ceremony around St. Servaasbron

Case I: The opening procession of Heiligdomsvaart Festival

II. Walking as a festive practice



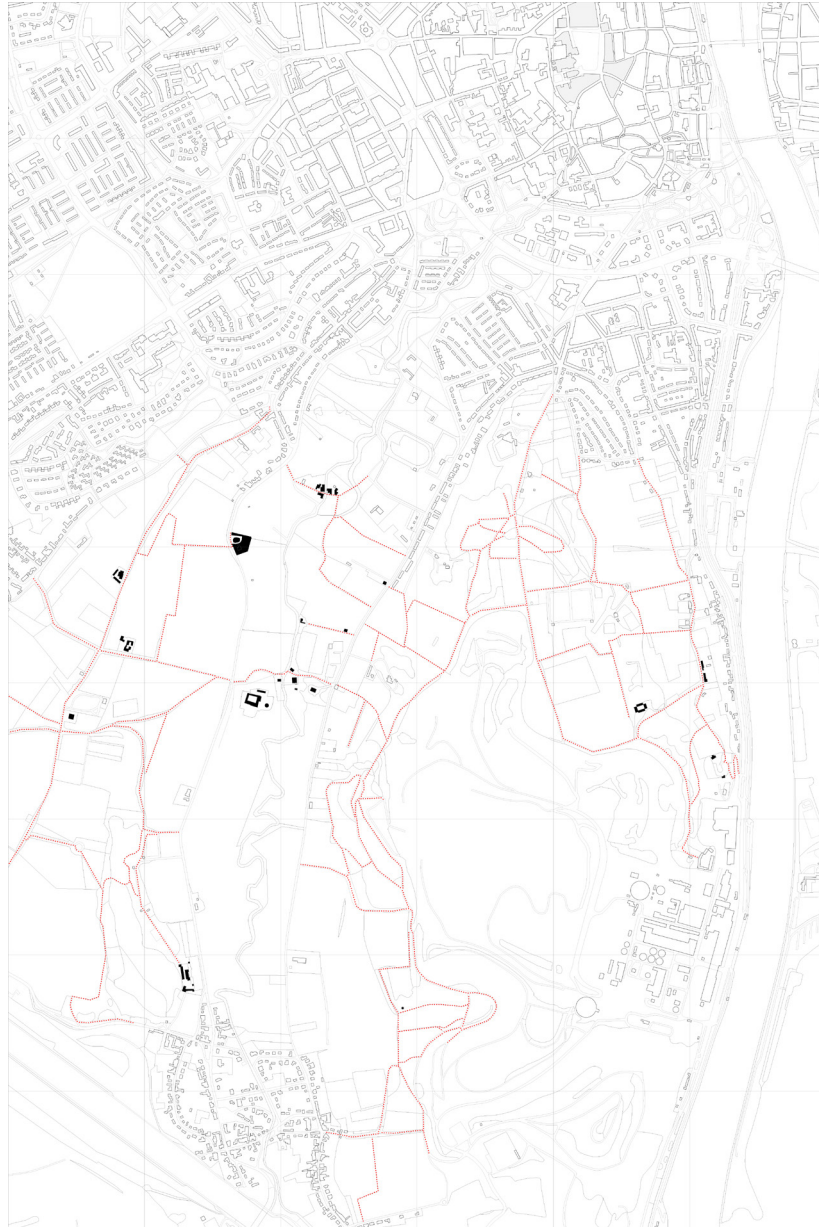
Case II: The example of Maastricht's pilgrim route

II. Walking as a festive practice



Pilgrimage in Maastricht's countryside

II. Walking as a festive practice



Case III: A tradition of walking in farm routes

II. Walking as a festive practice



Farm route in Limburg, painting by Nop Briex

II. Walking as a festive practice



Apostelhoeve winery, painting by Nop Briex

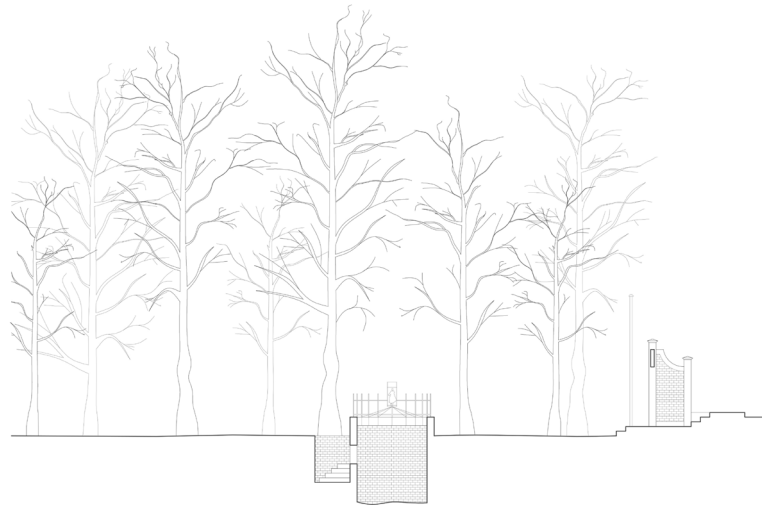
PART III
Festive architecture in the countryside

III. Festive architecture in the countryside



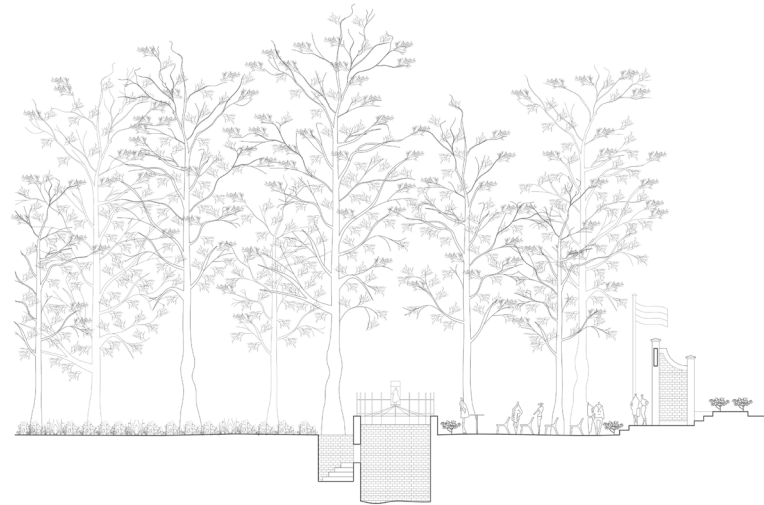
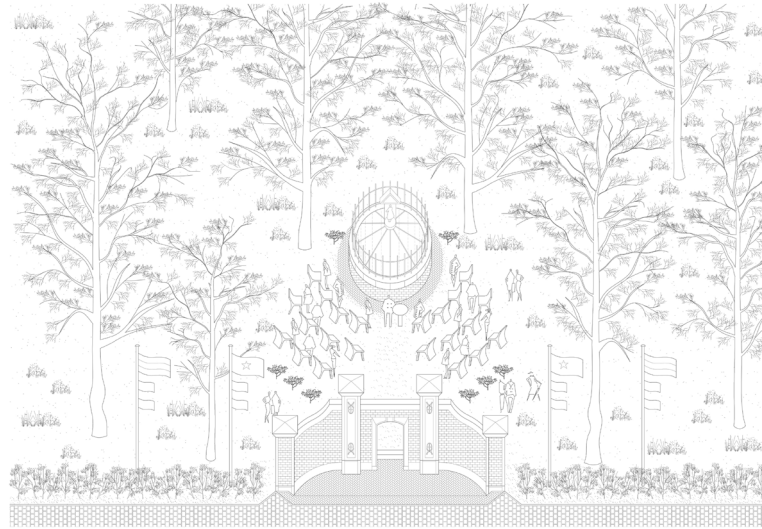
St. Servaasbron

III. Festive architecture in the countryside



*Winter at the St. Servaasbron
the gate, the well, the trees*

III. Festive architecture in the countryside



*Spring at the St. Servaasbron
an open interior*

III. Festive architecture in the countryside



Precedent Study: the woodland chapel by G. Asplund

PART IV

The context of Jeker valley

IV. The context of Jeker valley



After the party: the guesthouse in the valley

IV. The context of Jeker valley



*Jeker valley
siteplan*

IV. The context of Jeker valley



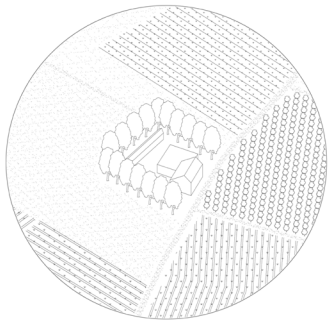
*The large scale
Jeker valley as a cultural meaningful*

IV. The context of Jeker valley

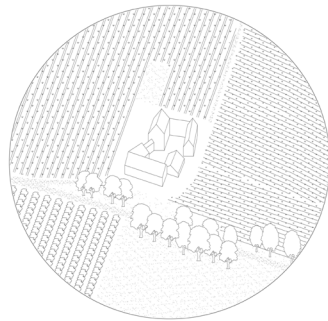


Family of buildings - Jeker valley

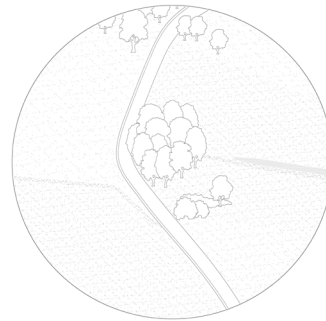
IV. The context of Jeker valley



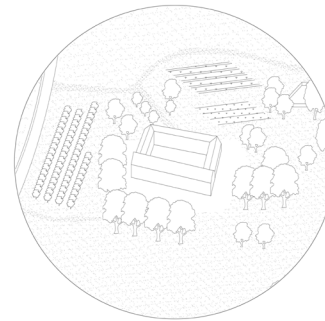
Local farmhouse



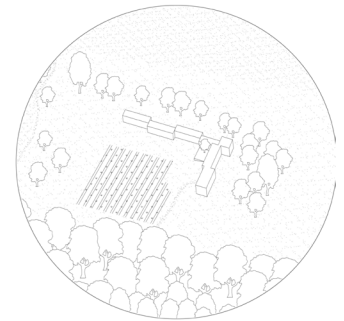
Apostelhoeve



St. Servaasbron



Hoeve Nekum



The guesthouse

Family of buildings - Jeker valley

IV. The context of Jeker valley



farm doors



stone apron/lintel/ornaments



stone stairs



concrete foundations



rammed earth wall



grass paving blocks



stone paving blocks



farm route #1



farm route #2



farm route #3



farm barrel



farm pickets



stone bench



stone monolith



corn fields

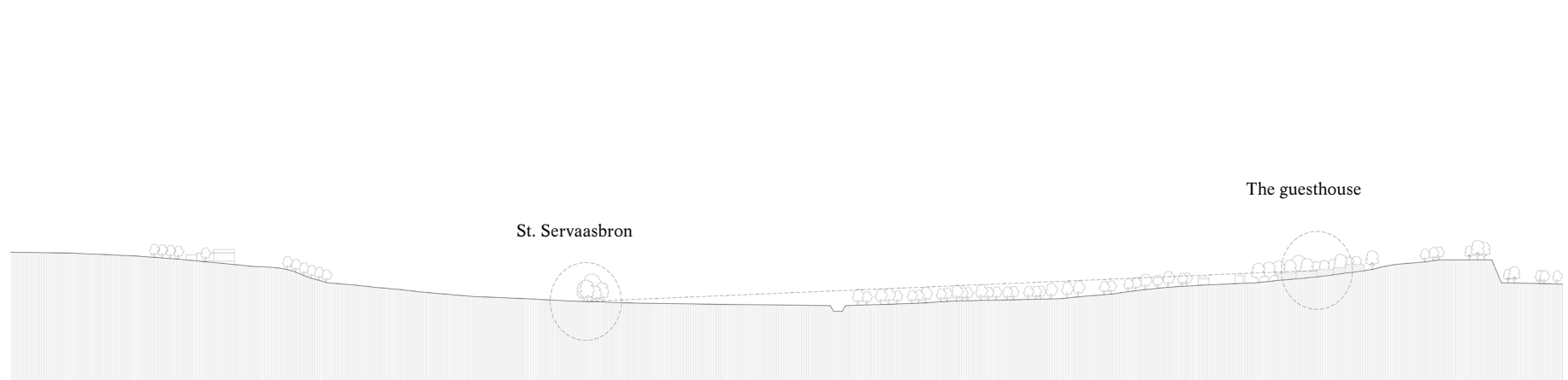
Material culture - Jeker valley

IV. The context of Jeker valley



*The guesthouse
the building in the context of the valley*

IV. The context of Jeker valley



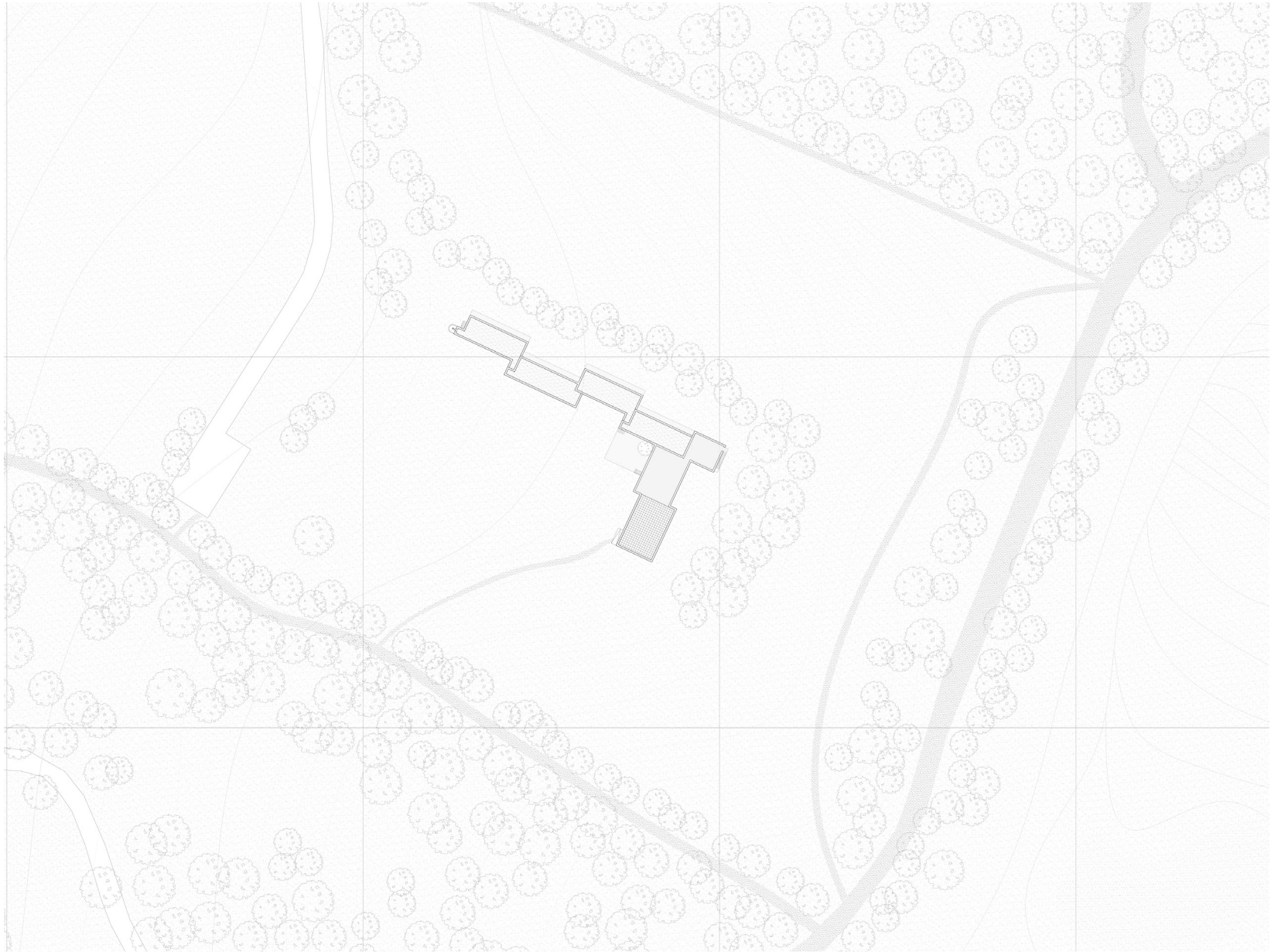
The site in section

IV. The context of Jeker valley



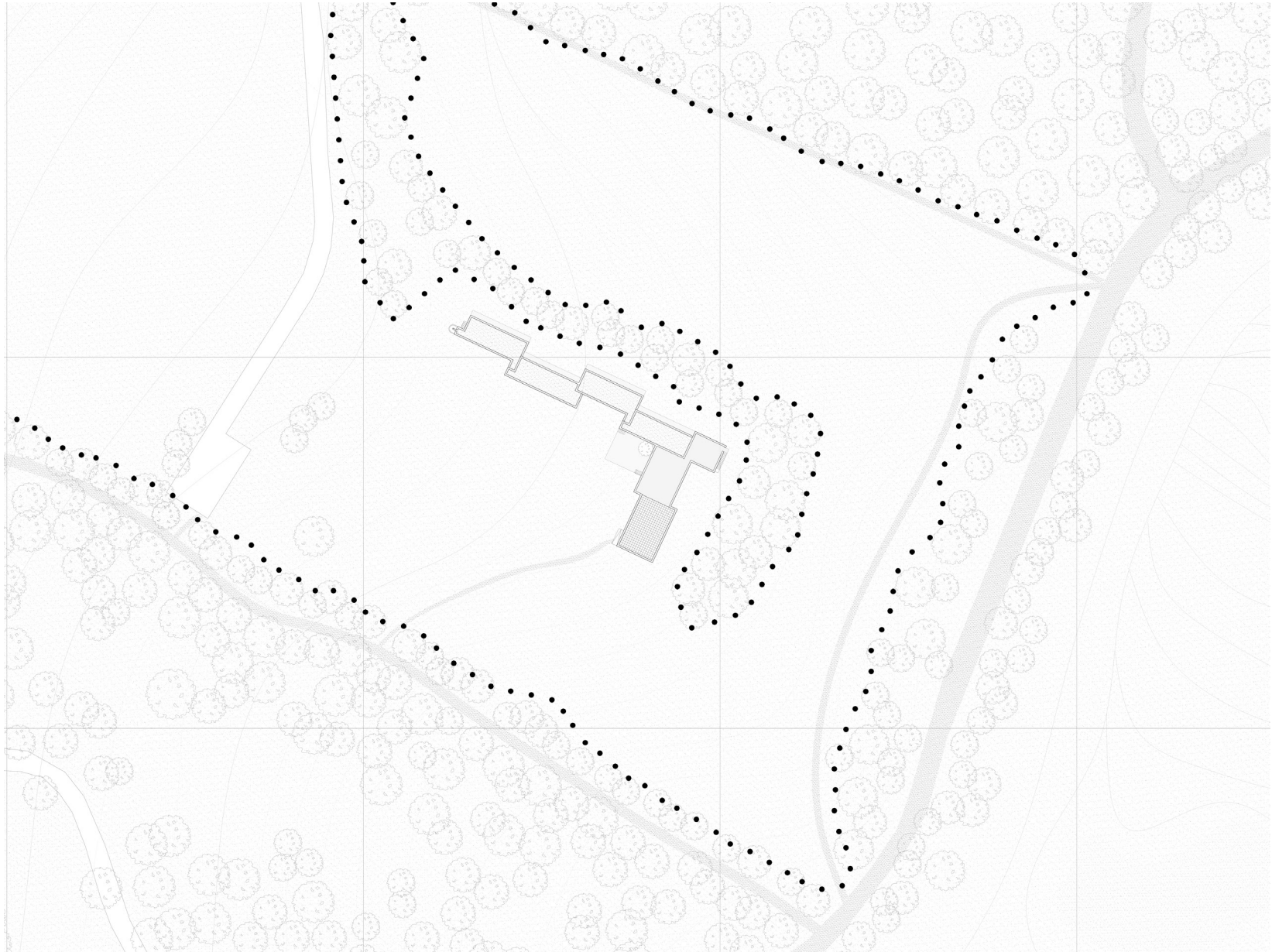
*St. Servaasbron - Guesthouse
visual connection*

IV. The context of Jeker valley



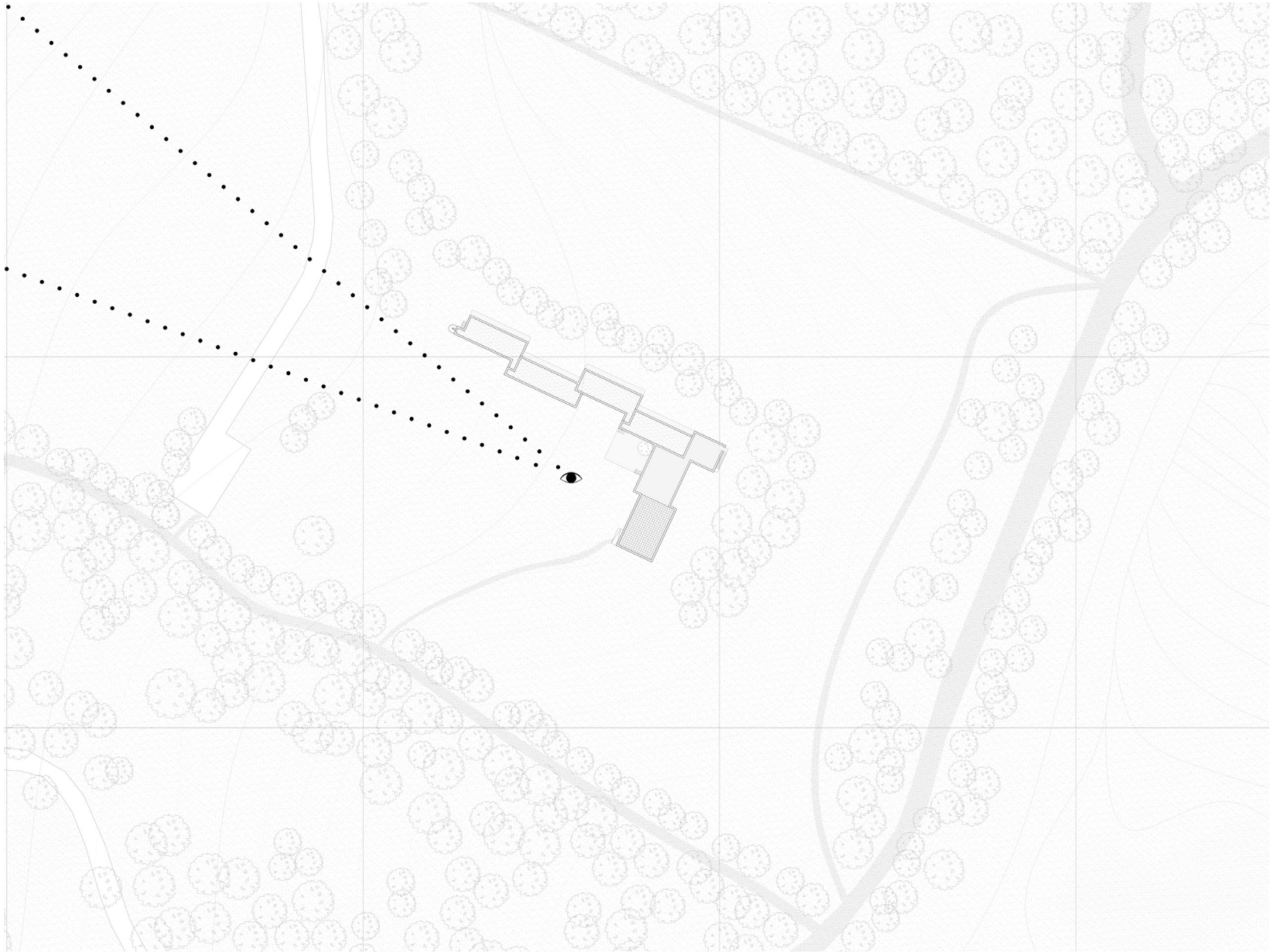
The site

IV. The context of Jeker valley



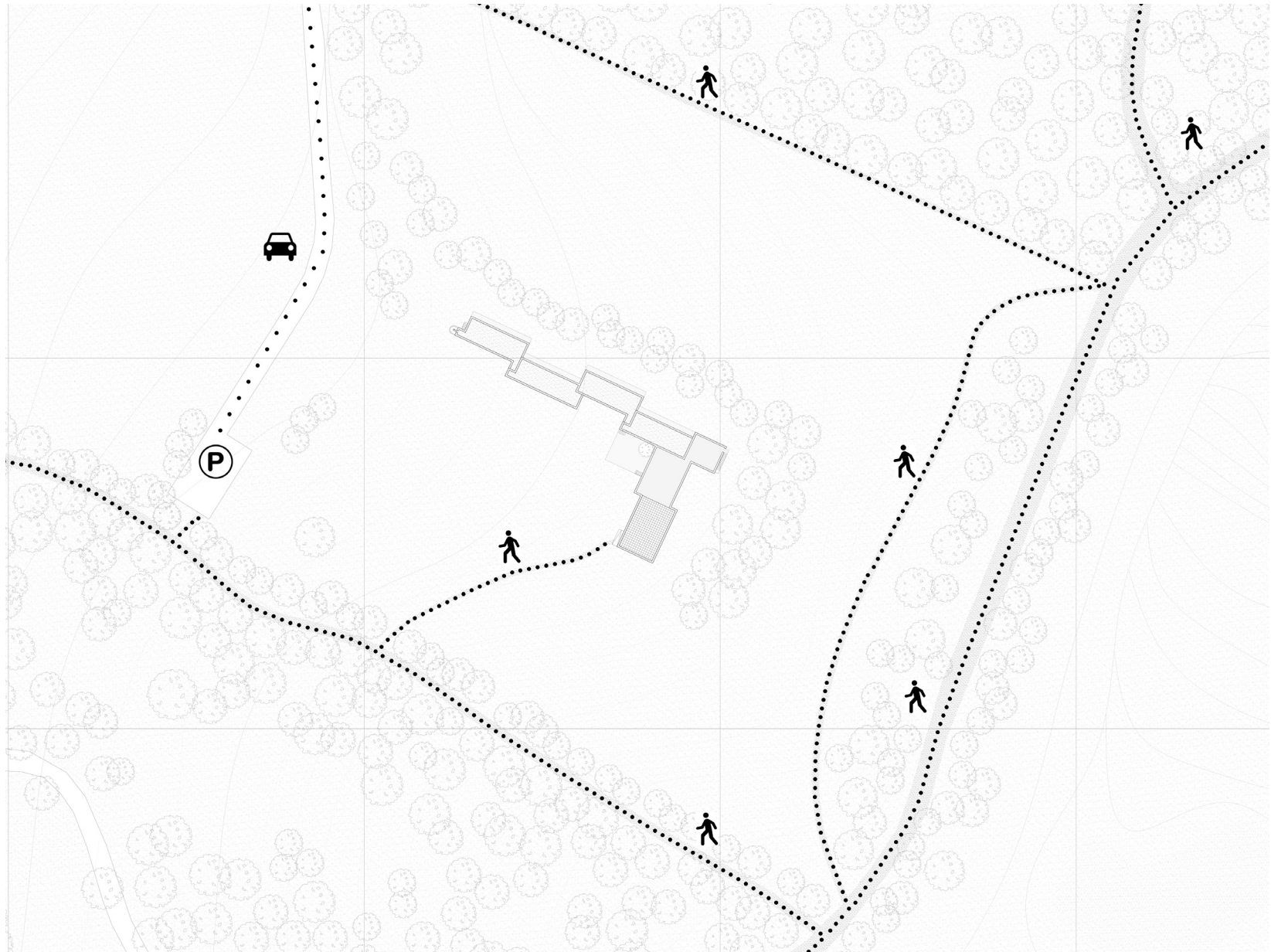
The site

Enclosed by the trees - an open interior



The site
Clear view towards the valley - St. Servaasbron

IV. The context of Jeker valley



The site

Farm routes network - car accessibility

IV. The context of Jeker valley



*Approaching the site
main pilgrim route*

IV. The context of Jeker valley



*Approaching the site
main pilgrim route*

IV. The context of Jeker valley



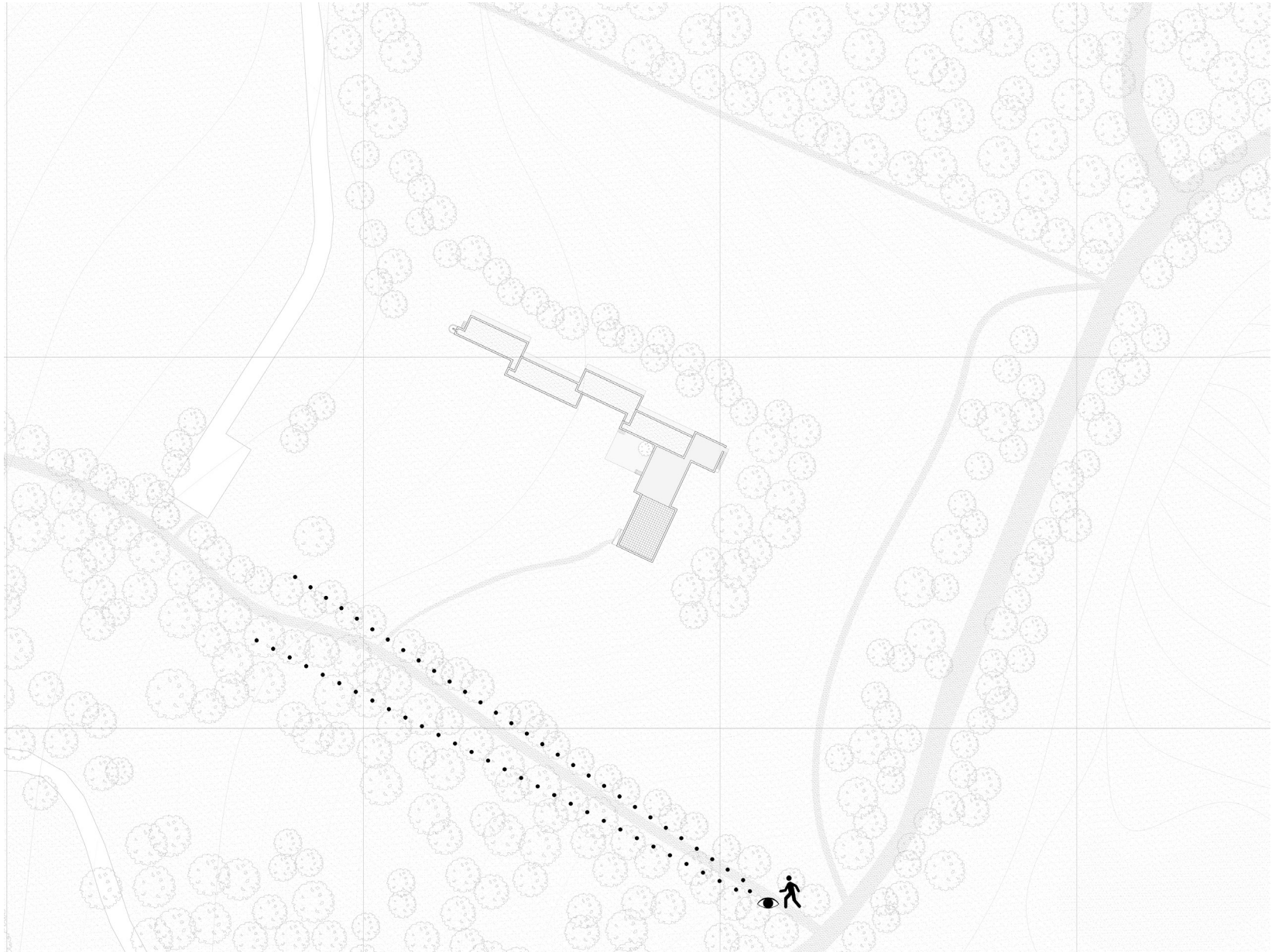
*Approaching the site
Sint-Pietersberg*

IV. The context of Jeker valley



*Approaching the site
Sint-Pietersberg*

IV. The context of Jeker valley



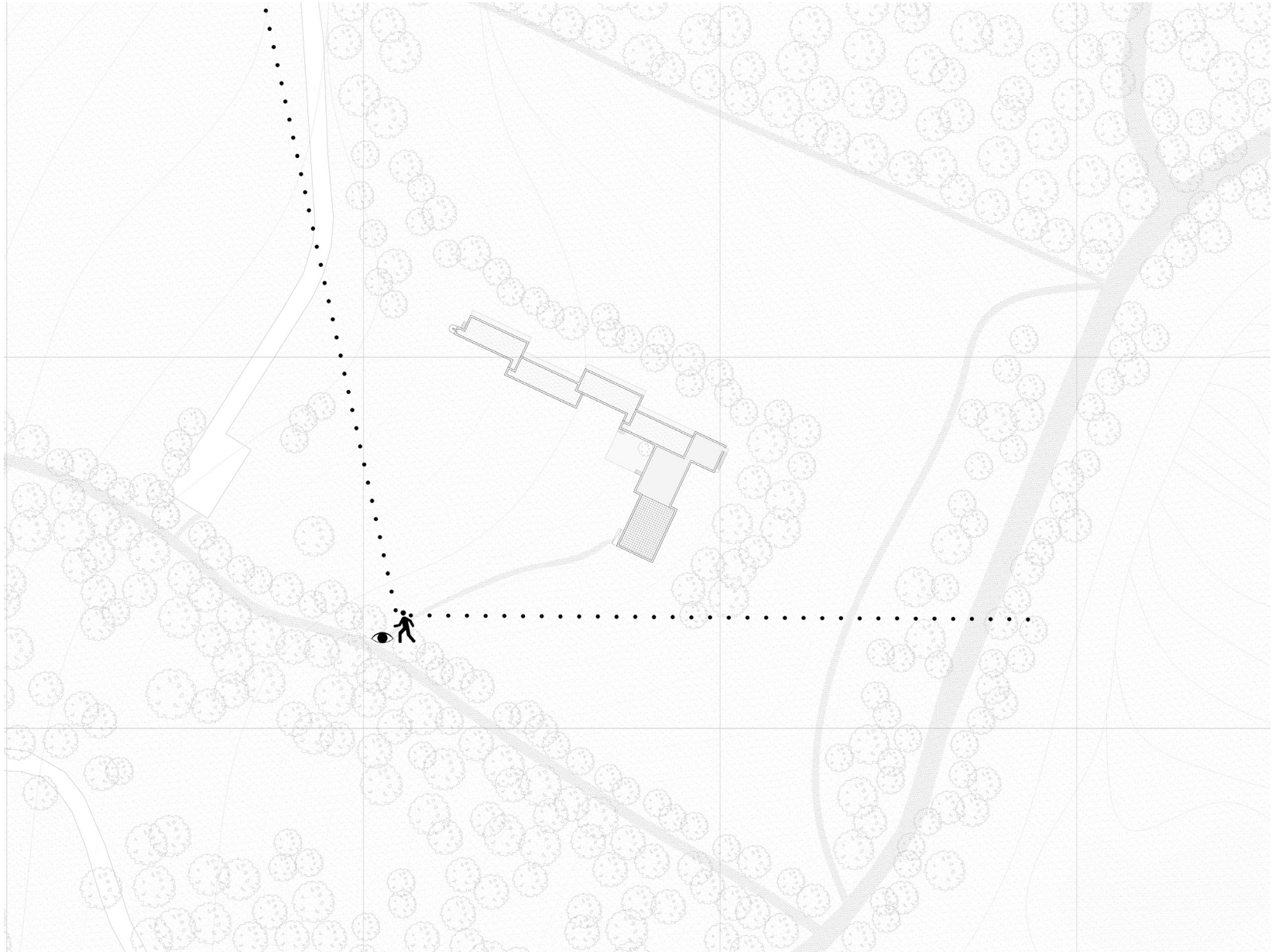
*Approaching the site
the “green-room”*

IV. The context of Jeker valley



*Approaching the site
the “green-room”*

IV. The context of Jeker valley



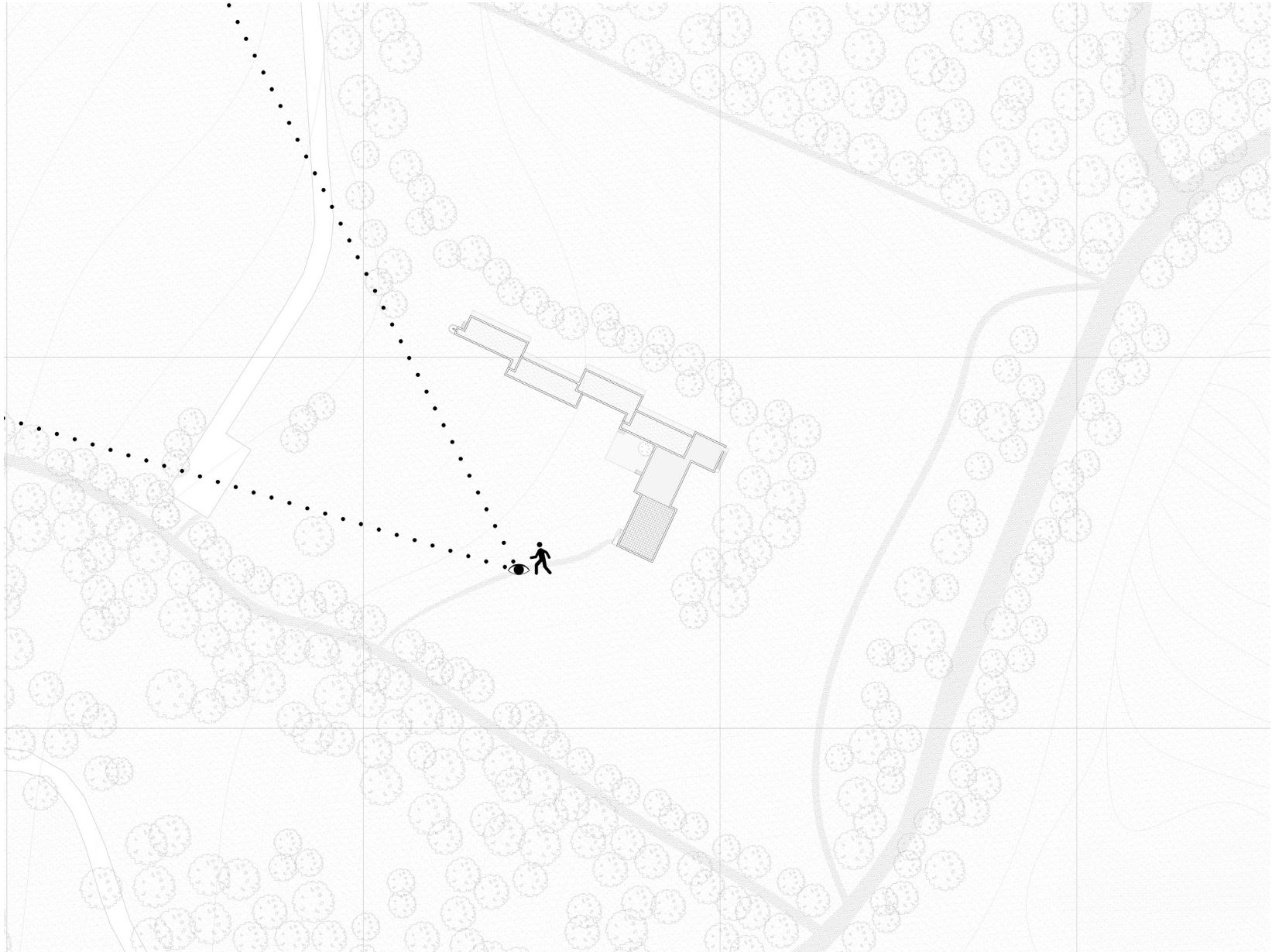
*Approaching the site
the grassy field*

IV. The context of Jeker valley



*Approaching the site
the grassy field*

IV. The context of Jeker valley



*Approaching the site
attending Jeker valley*

IV. The context of Jeker valley



*Approaching the site
attending Jeker valley*

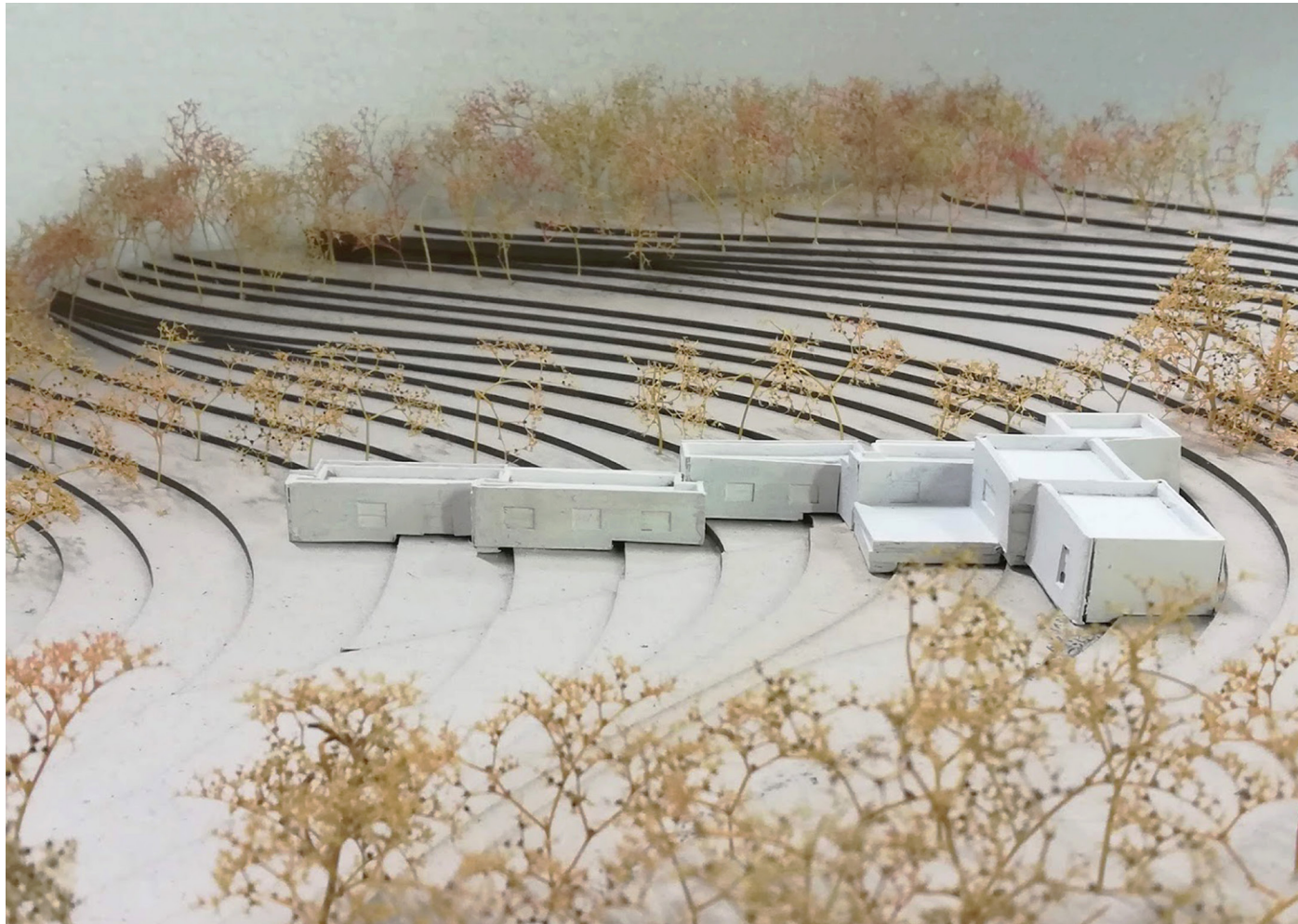
PART V
The guesthouse in the valley

V. The guesthouse in the valley



*The guesthouse
articulations in the landscape*

V. The guesthouse in the valley



*The guesthouse
adaptation in the slope*

V. The guesthouse in the valley



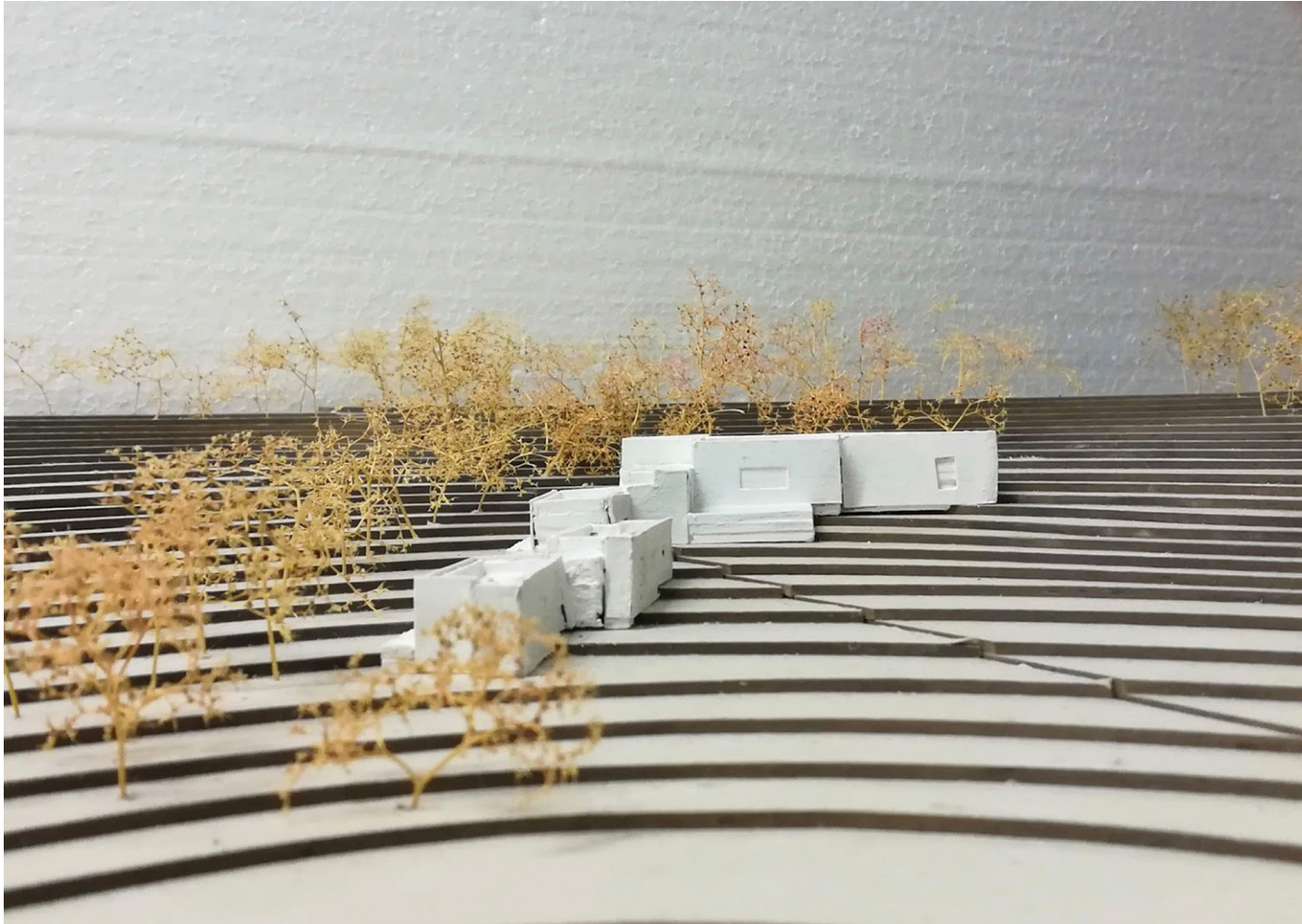
*The guesthouse
gradual revelation*

V. The guesthouse in the valley



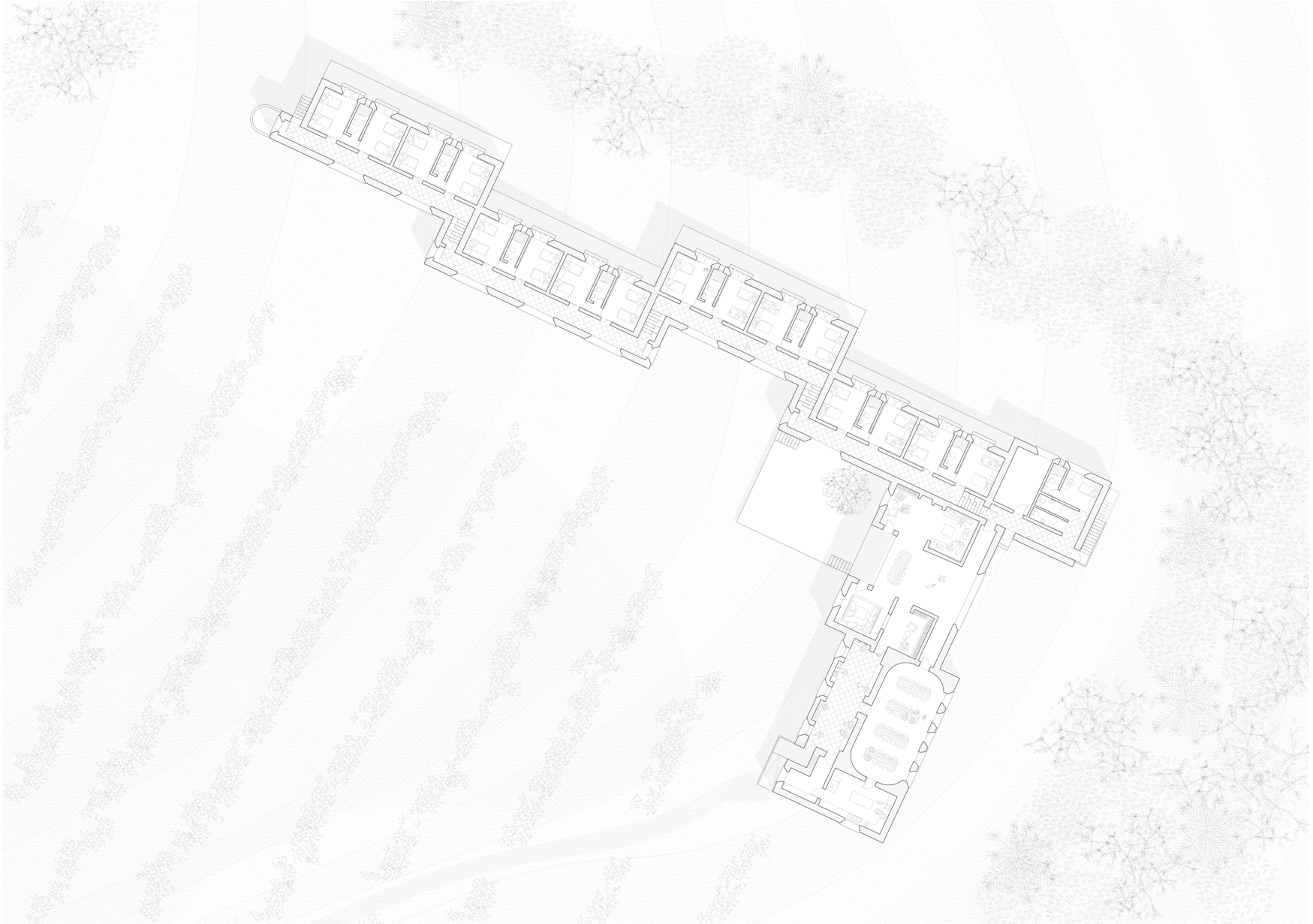
*The guesthouse
gradual revelation*

V. The guesthouse in the valley



*The guesthouse
gradual revelation*

V. The guesthouse in the valley



*The guesthouse
floorplan*

V. The guesthouse in the valley



total 1.200m2

*The guesthouse
Programmatic diagram*

V. The guesthouse in the valley



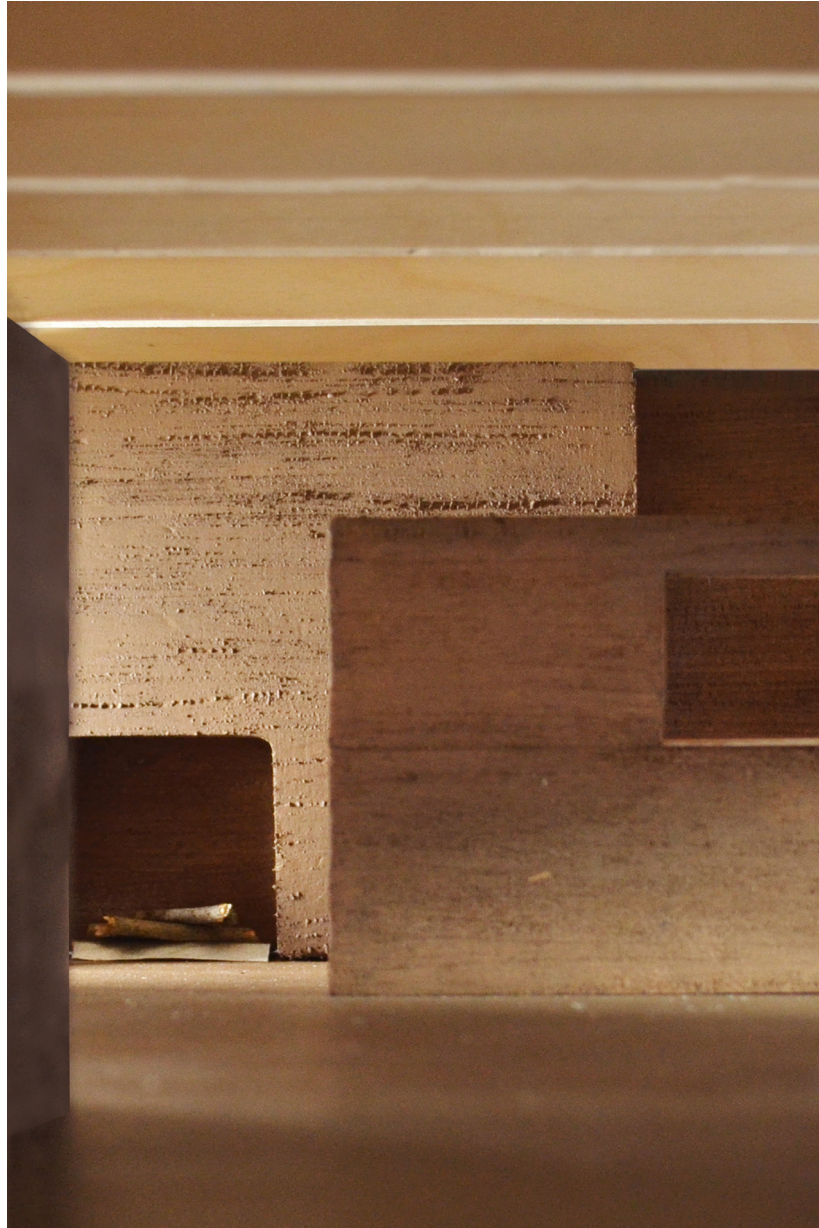
*The guesthouse
Roof division*

V. The guesthouse in the valley



*The guesthouse
floorplan / common spaces*

V. The guesthouse in the valley



*The guesthouse
Entrance of the lounge*

V. The guesthouse in the valley



The guesthouse
The lounge of the guesthouse

V. The guesthouse in the valley



*The guesthouse
Attending back to St. Servaasbron*

V. The guesthouse in the valley



*The guesthouse
The corridor and the window*

V. The guesthouse in the valley



*The guesthouse
aspect of the living room*

V. The guesthouse in the valley



*The guesthouse
aspect of the living room*

V. The guesthouse in the valley



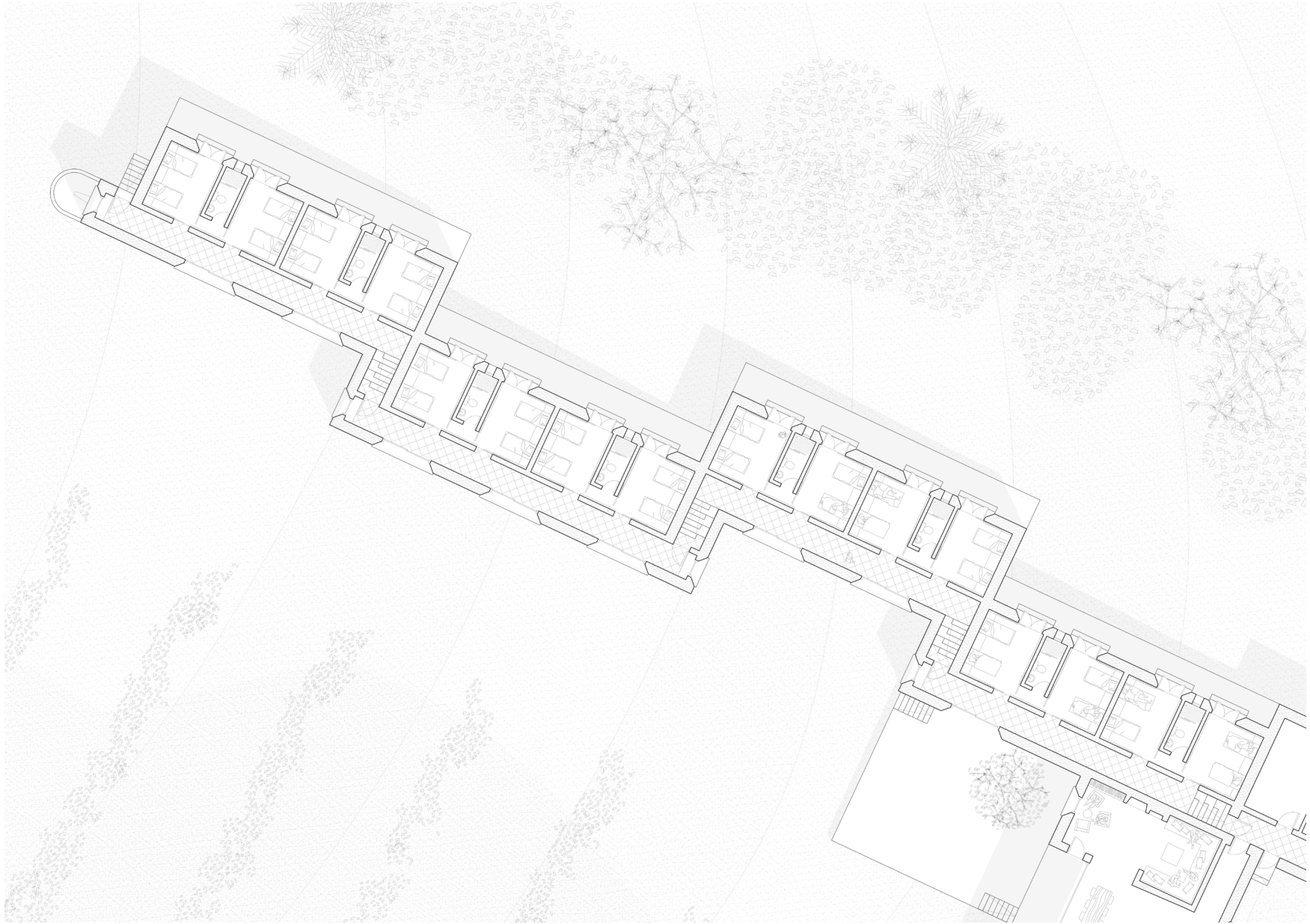
*The guesthouse
access to roof terrace*

V. The guesthouse in the valley



*The guesthouse
view from the corridor*

V. The guesthouse in the valley



*The guesthouse
floorplan*

V. The guesthouse in the valley



*The guesthouse
the corridor of the dormitory*

V. The guesthouse in the valley



*The guesthouse
living in the countryside*

V. The guesthouse in the valley



*The guesthouse
listening to the birds*

V. The guesthouse in the valley



*The guesthouse
from outside to inside*

V. The guesthouse in the valley



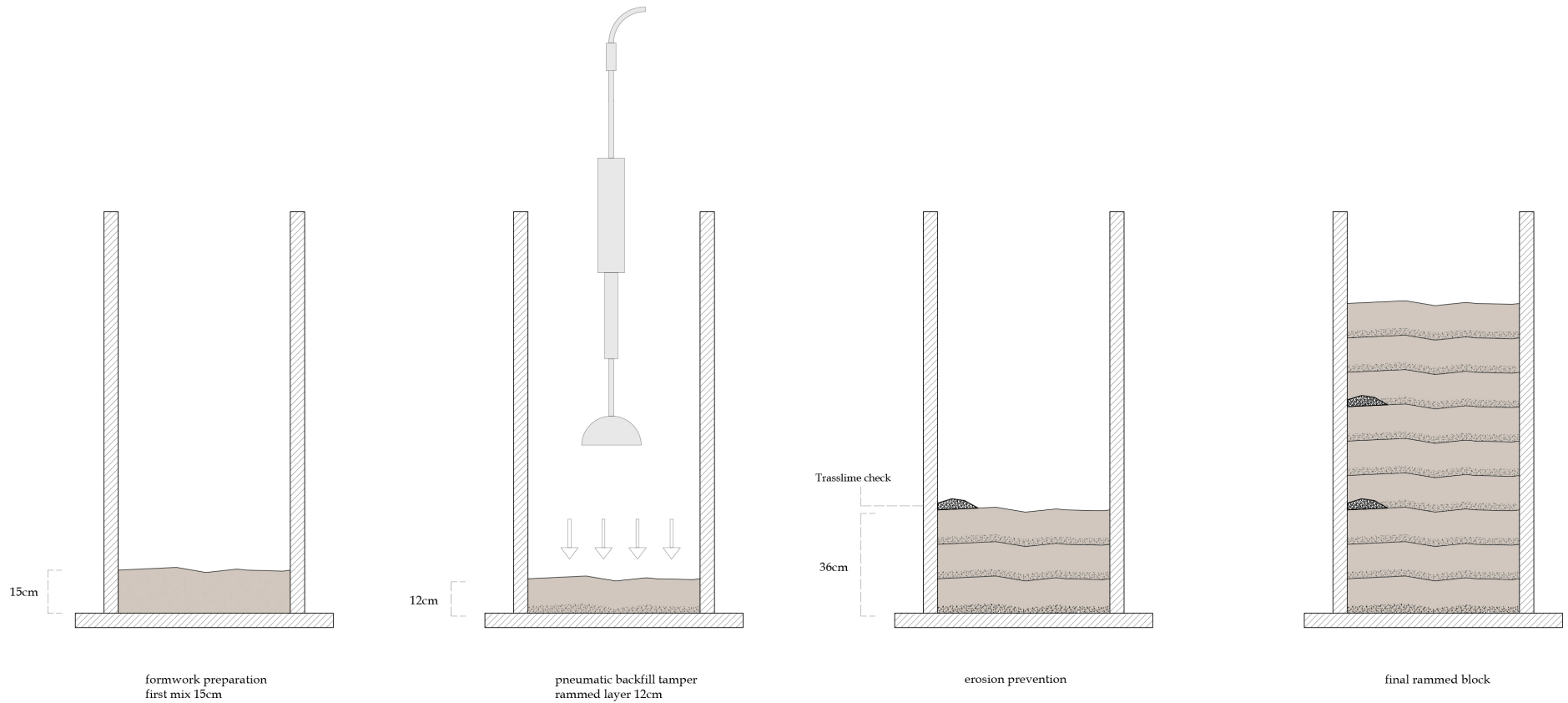
Limburg earth - farm routes



Limburg earth - rammed earth construction

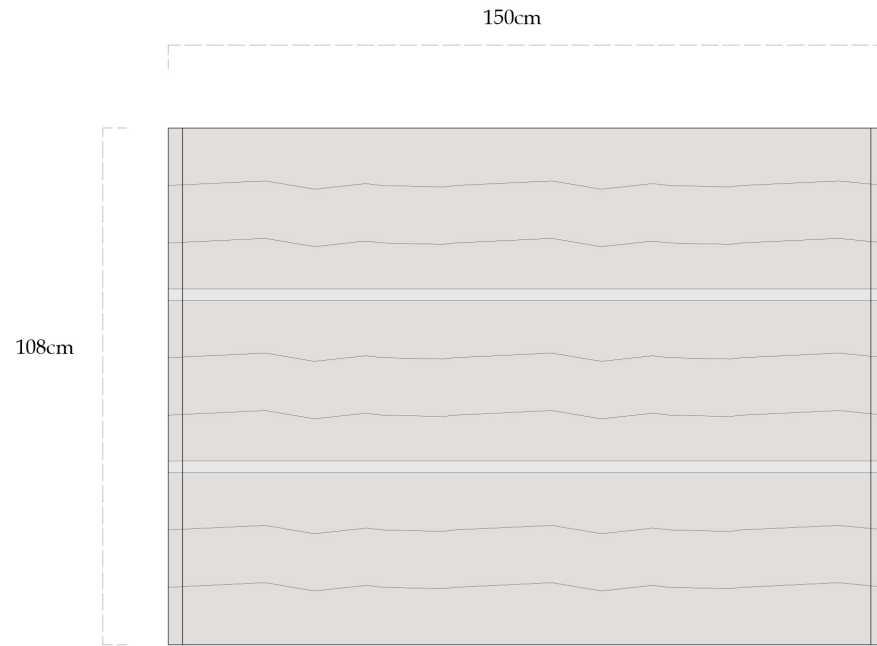
Materiality
rammed earth construction

V. The guesthouse in the valley

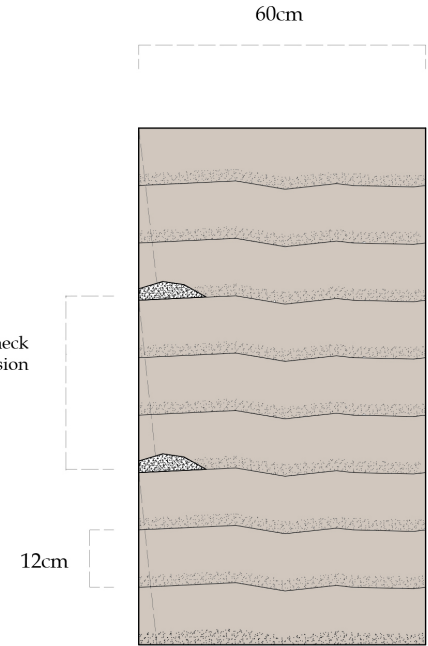


Materiality
rammed earth construction

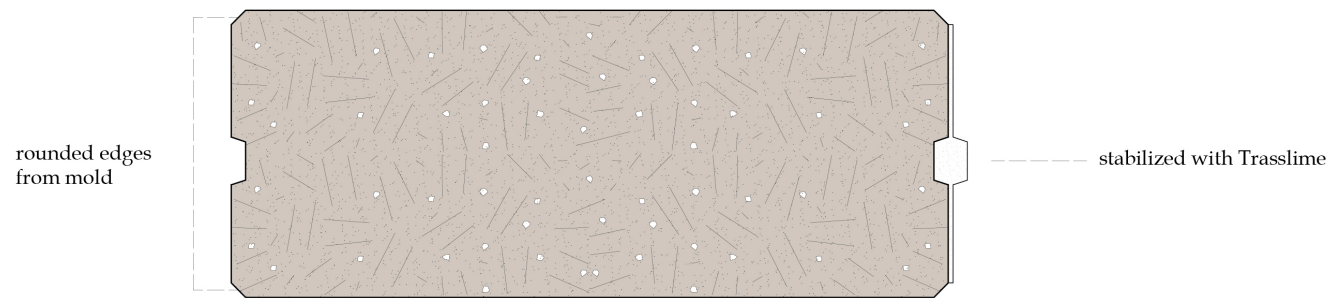
V. The guesthouse in the valley



Rammed Block, facade



Rammed Block

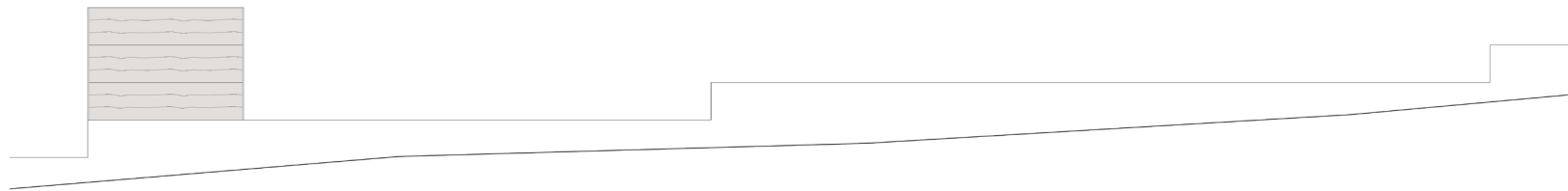


Rammed Block, plan

- 20% gravel
- 40% ochre colored earth from Limburg
- 40% clay

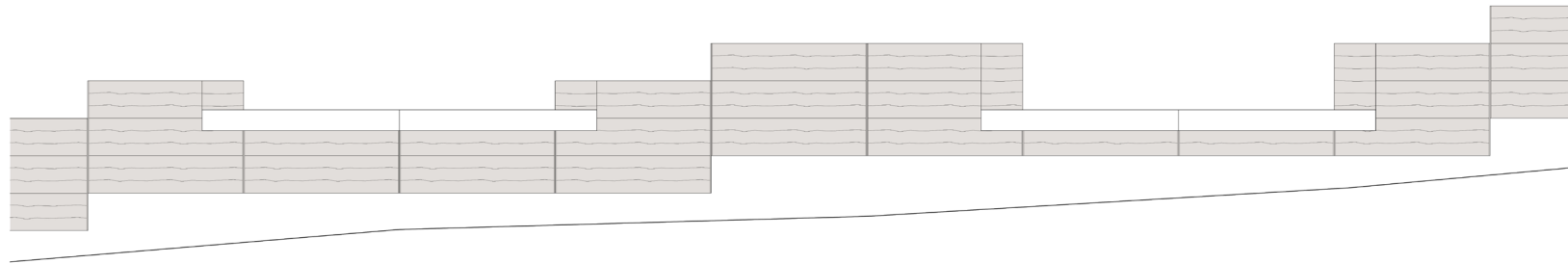
Materiality
rammed earth construction

V. The guesthouse in the valley



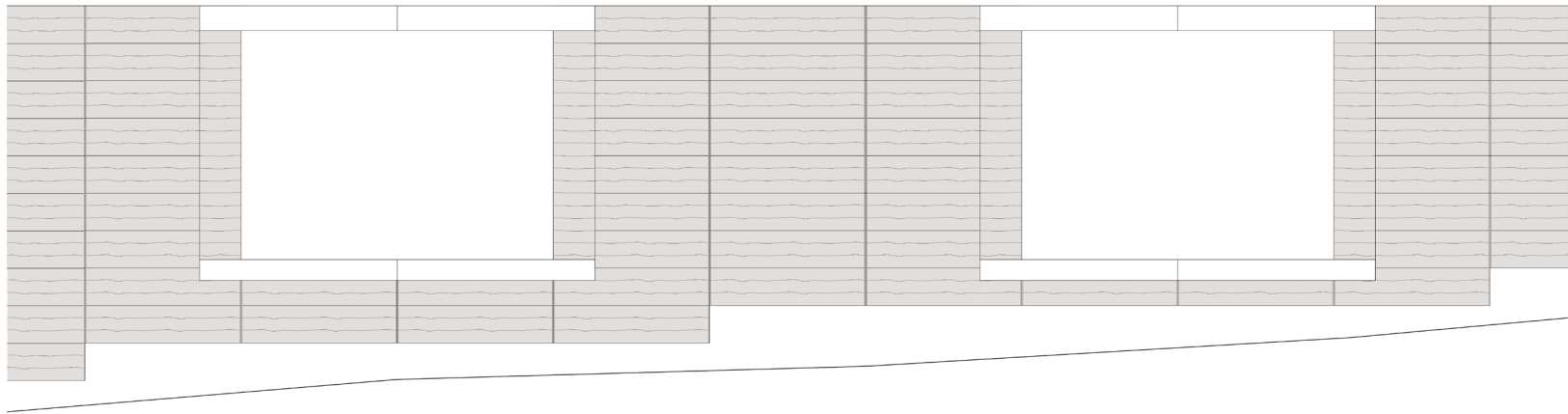
*Facade
construction steps*

V. The guesthouse in the valley



Facade
construction steps

V. The guesthouse in the valley



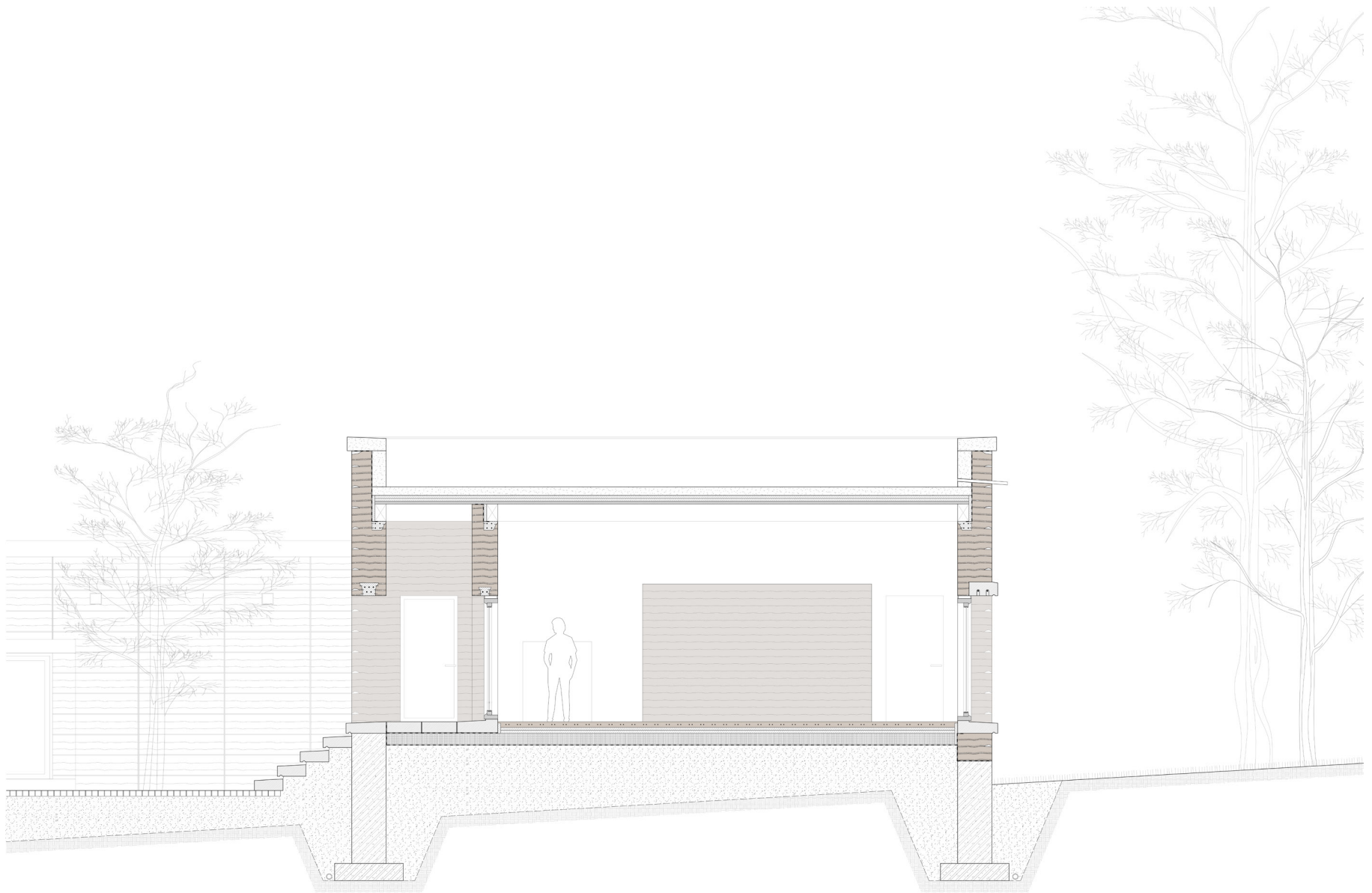
*Facade
construction steps*

V. The guesthouse in the valley



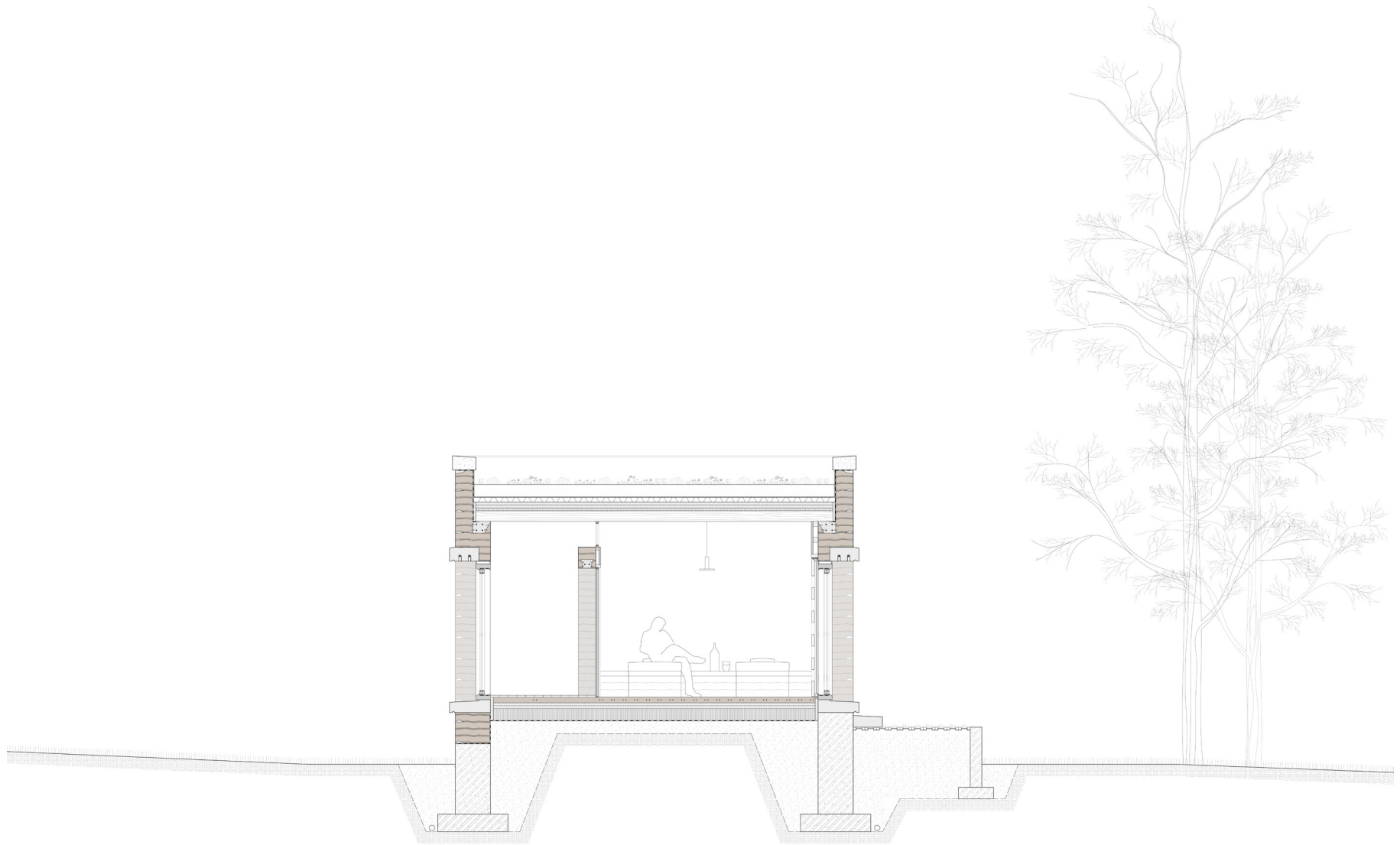
*Facade
construction steps*

V. The guesthouse in the valley



*Lounge of the guesthouse
Construction Section*

V. The guesthouse in the valley



*Rooms of the guesthouse
Construction Section*

V. The guesthouse in the valley

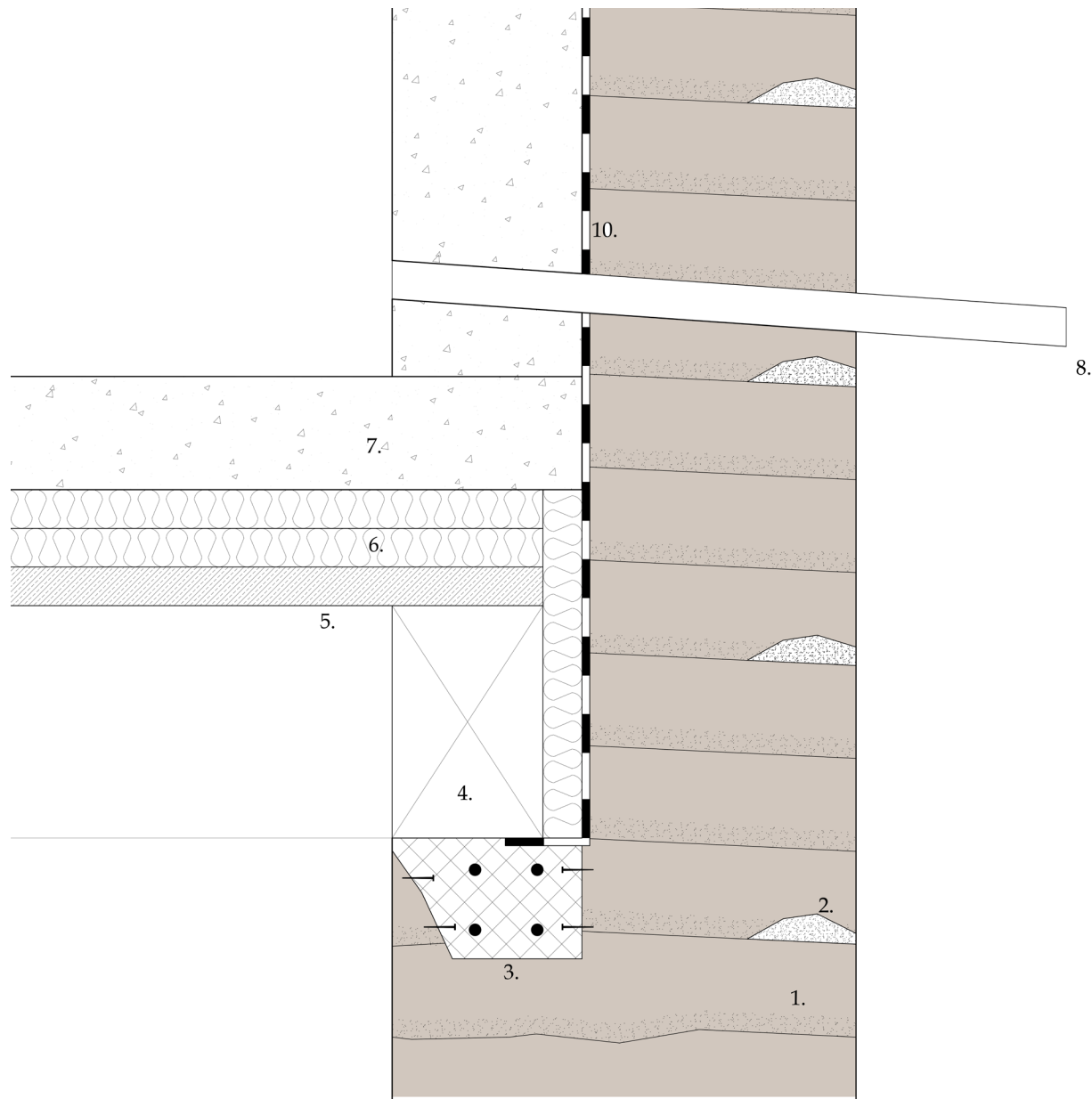


*Materiality
the materials of the floor*

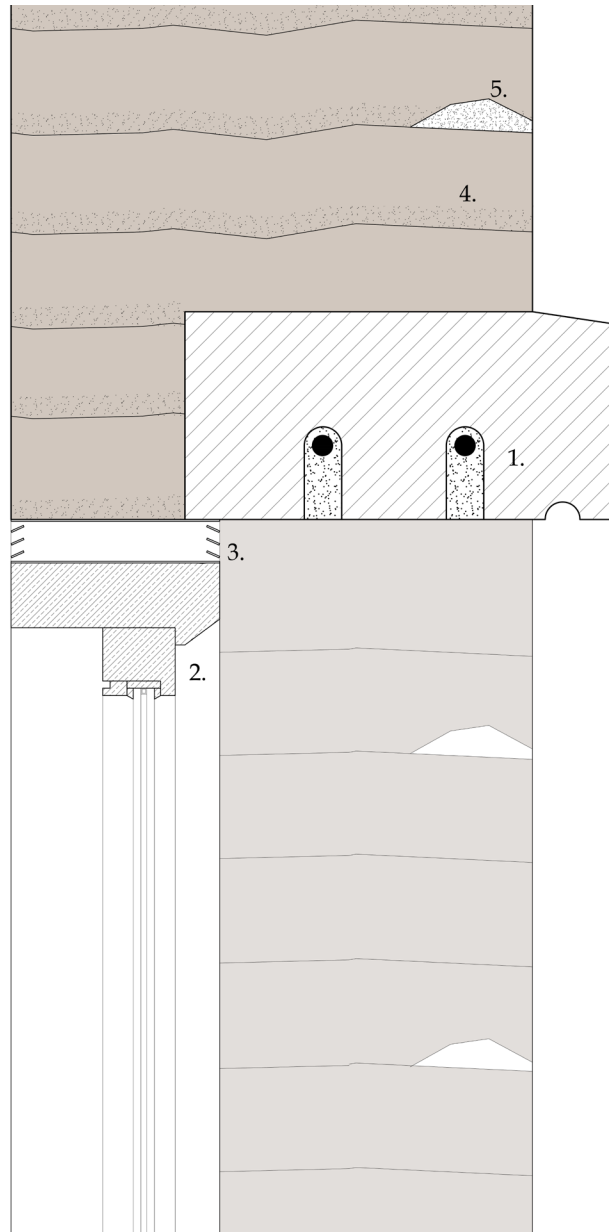
V. The guesthouse in the valley



Materiality
stone ornamentations



- 10. waterproof layer
- 8. emergency overflow pipe
- 7. concrete roof 15cm (3% slope)
- 6. foam glass insulation 10cm (2x5cm)
- 5. clt roof 5cm
- 4. clt roof construction (beam 30x20cm)
- 3. reinforced trass-lime mortar
- 2. trass-lime check
- 1. rammed earth exterior wall 60cm
earth layer 12cm



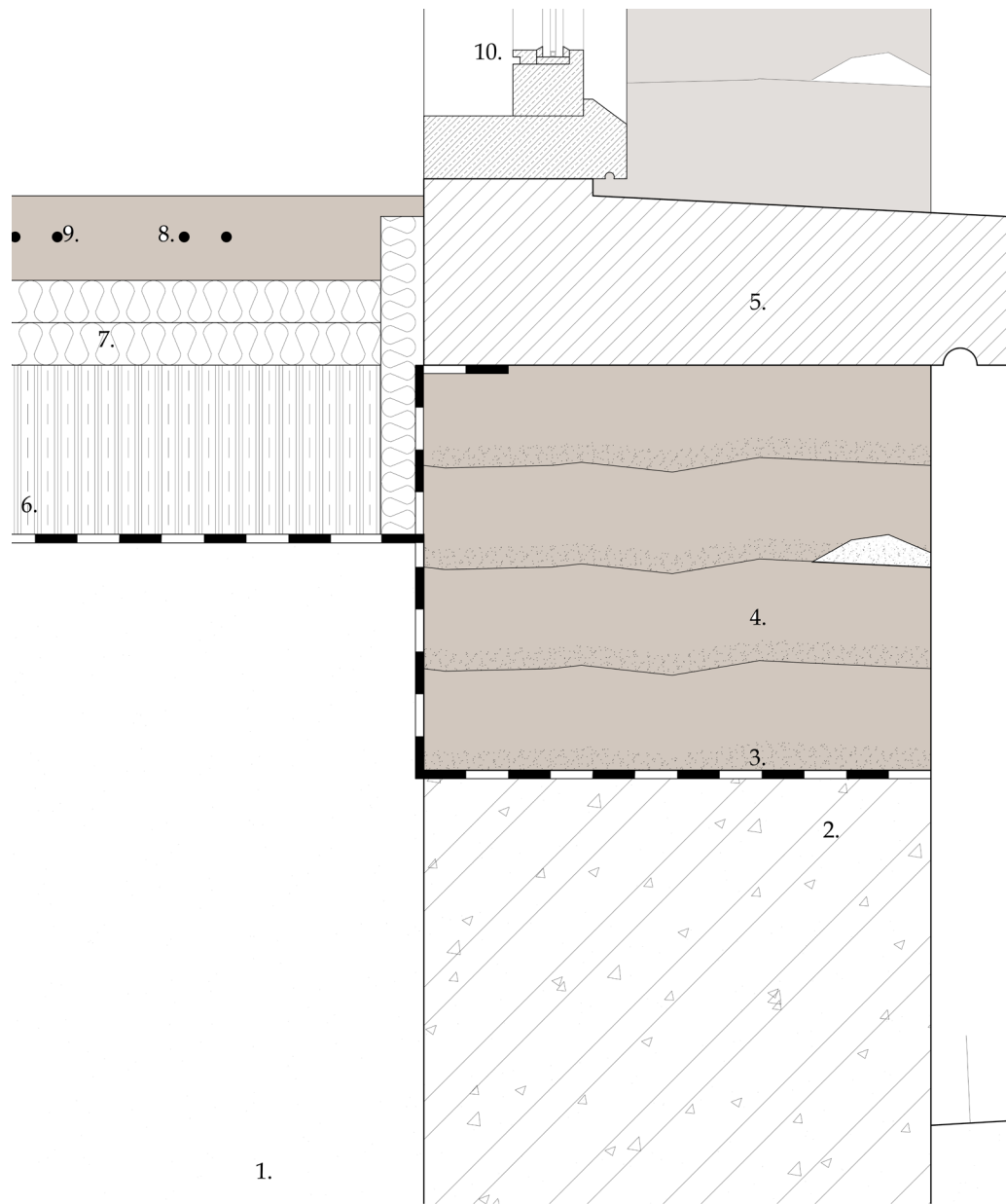
5.trass-lime check

4.rammed earth exterior wall 60cm
earth layer 12cm

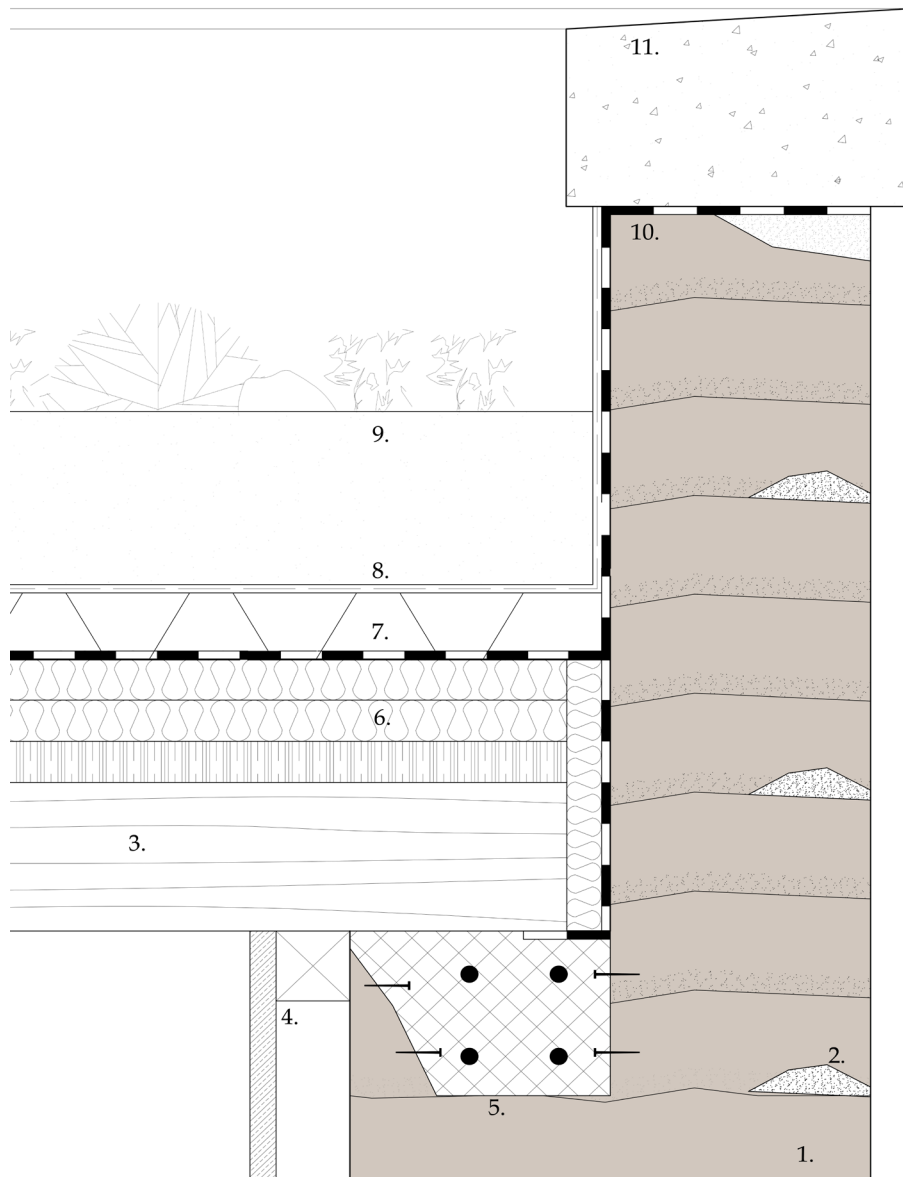
3.ventilation grill

2.wooden window

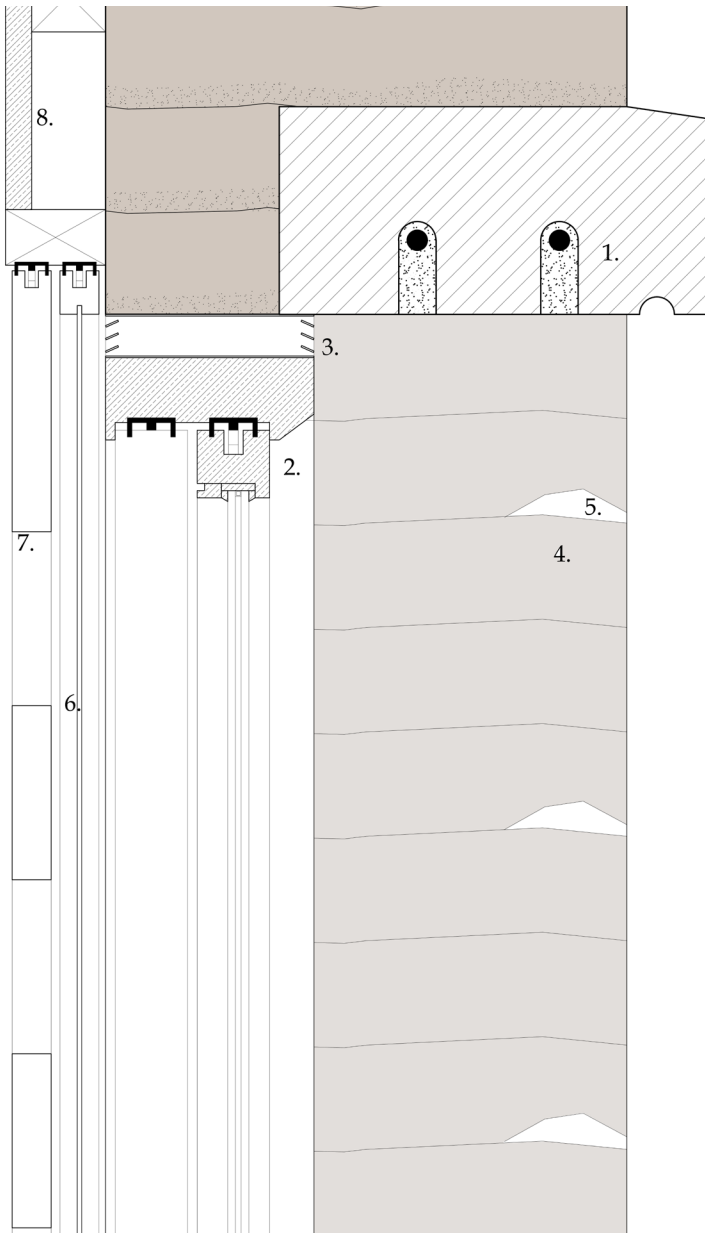
1.window lintel from "Namur limestone"
reinforced with steel rebar



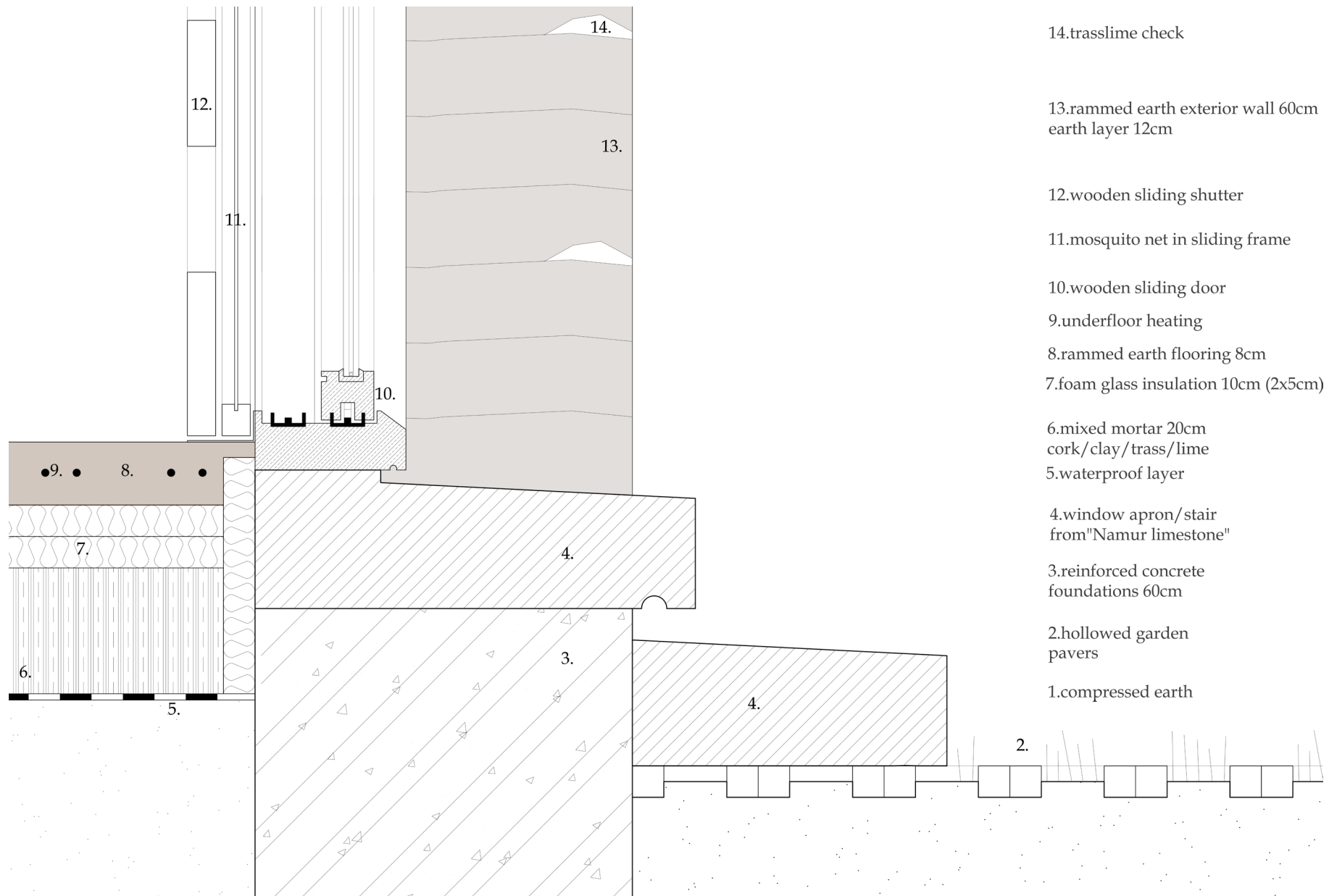
- 10. wooden window
- 9. underfloor heating
- 8. rammed earth flooring 8cm
- 7. foam glass insulation 10cm (2x5cm)
- 6. mixed mortar 20cm
cork/clay/trass/lime
- 5. window apron/stair
from "Namur limestone"
- 4. rammed earth exterior wall 60cm
earth layer 12cm
- 3. waterproof layer
- 2. reinforced concrete
foundations 60cm
- 1. compressed earth



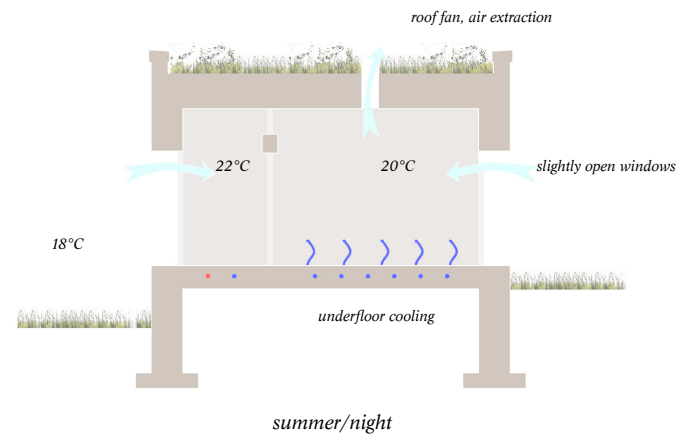
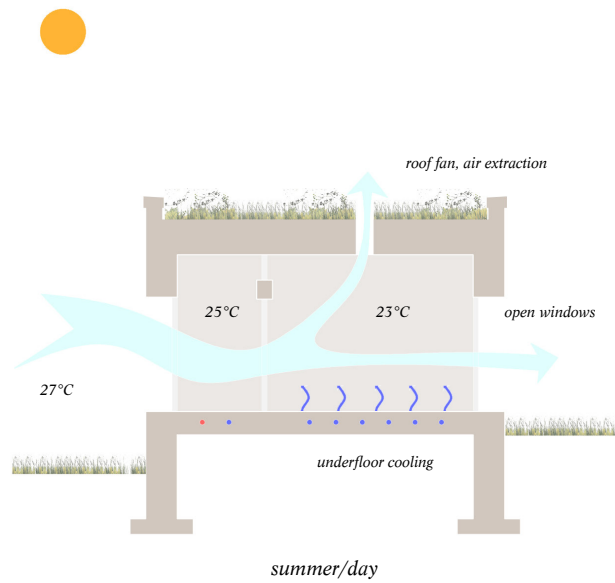
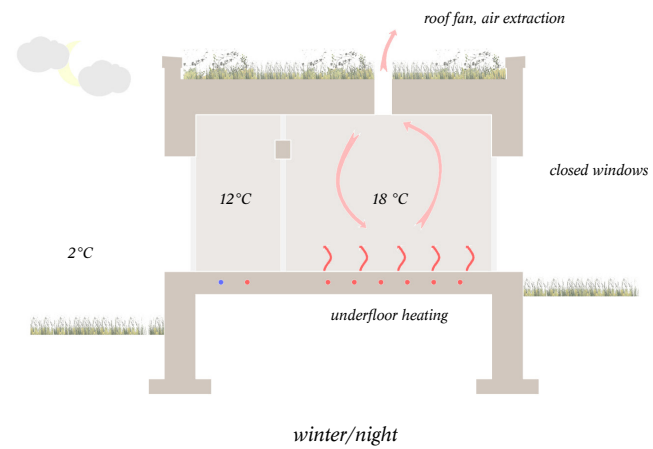
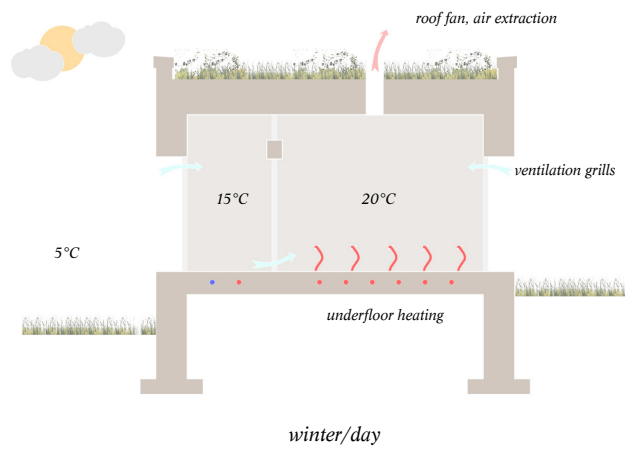
- 11.reinforced concrete finishing
slope 5%
- 10.waterproof layer
- 9.vegetation layer
- 8.filter fleece
- 7.drainage layer
- 6.foam glass insulation 10cm (2x5cm)
- 5.reinforced trasslime mortar
- 4.wall covering (wooden construction)
- 3.solid wood slab (doppelbaum) 18cm
- 2.trass-lime check
- 1.rammed earth exterior wall 60cm
earth layer 12cm



- 8.wall covering (wooden construction)
- 7.wooden sliding shutter
- 6.mosquito net in sliding frame
- 5.trass-lime check
- 4.rammed earth exterior wall 60cm
earth layer 12cm
- 3.ventilation grill
- 2.wooden sliding door
- 1.window lintel from "Namur limestone"
reinforced with steel rebar

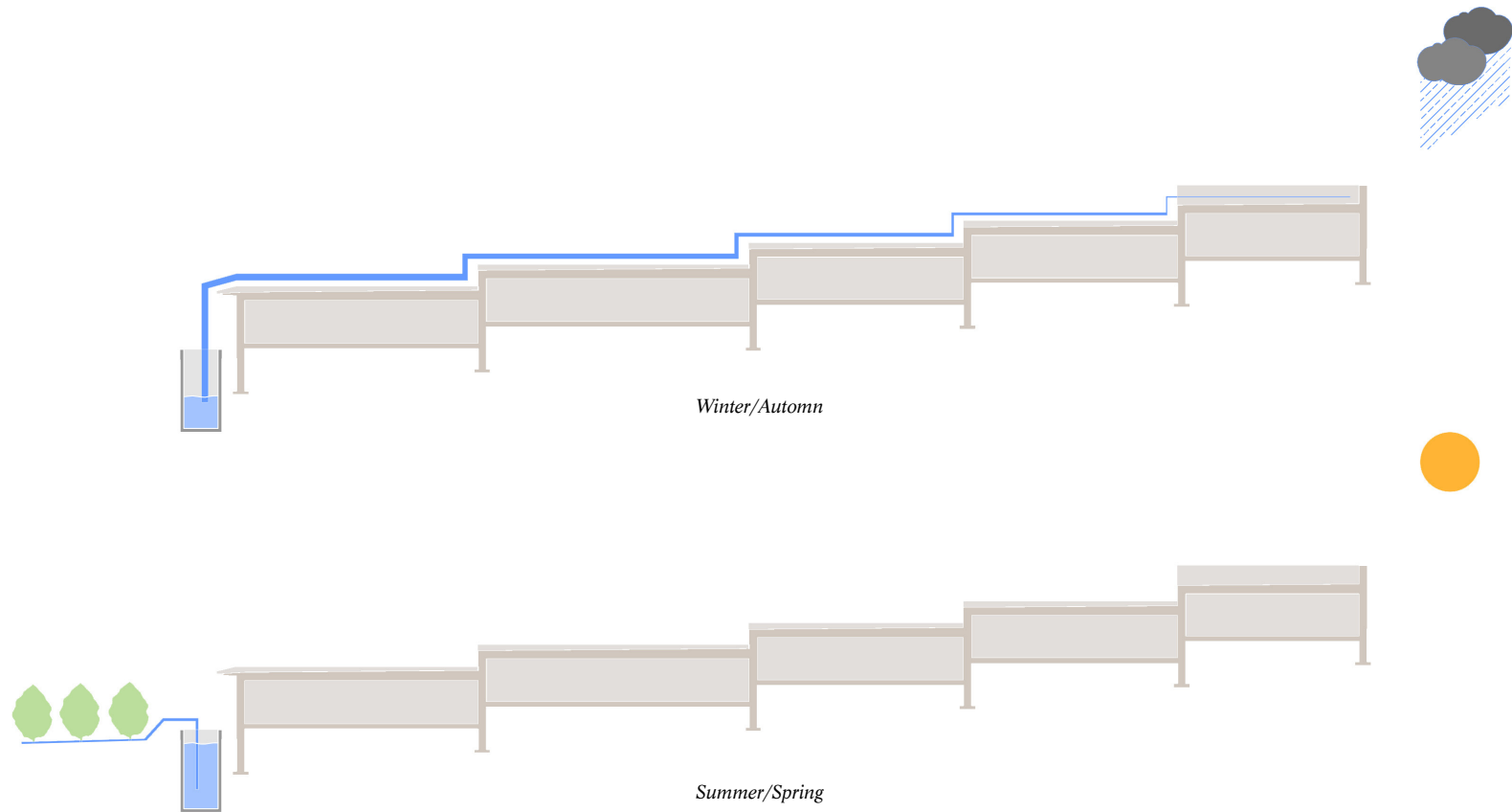


V. The guesthouse in the valley



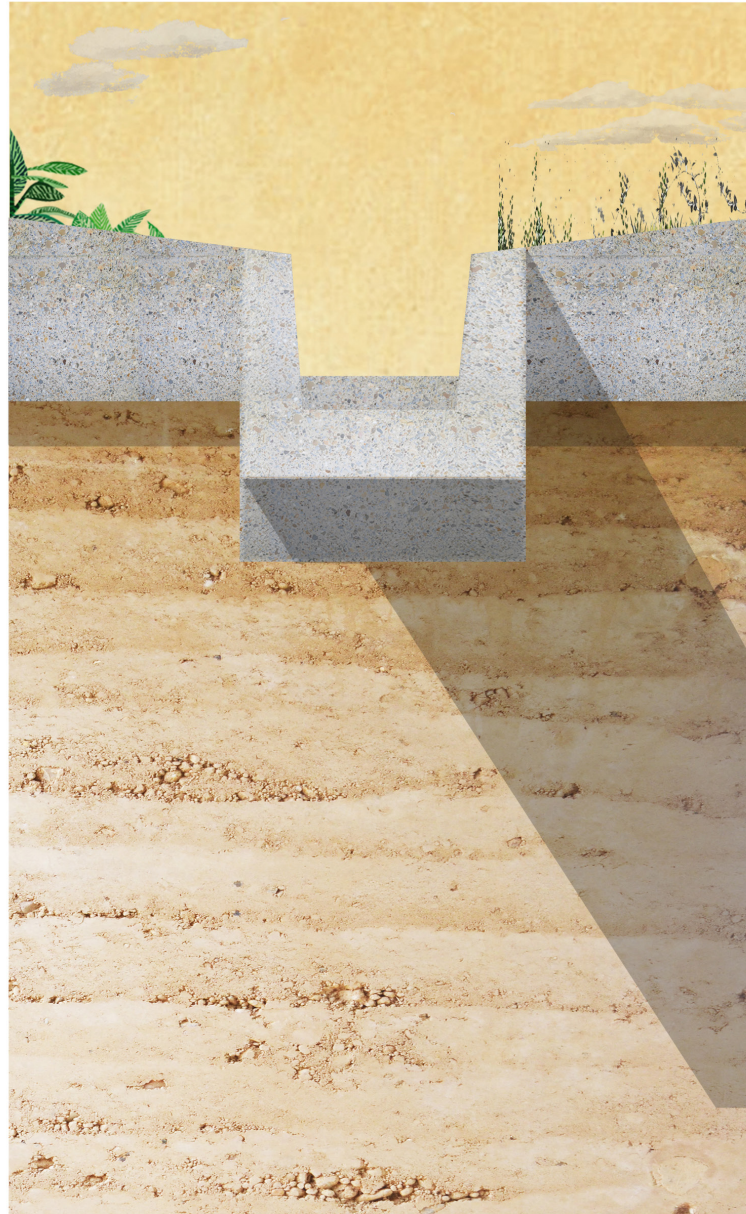
*Climate concepts
heating, cooling and ventilation in the rooms*

V. The guesthouse in the valley



*Climate concepts
rainwater gathering for irrigation*

V. The guesthouse in the valley

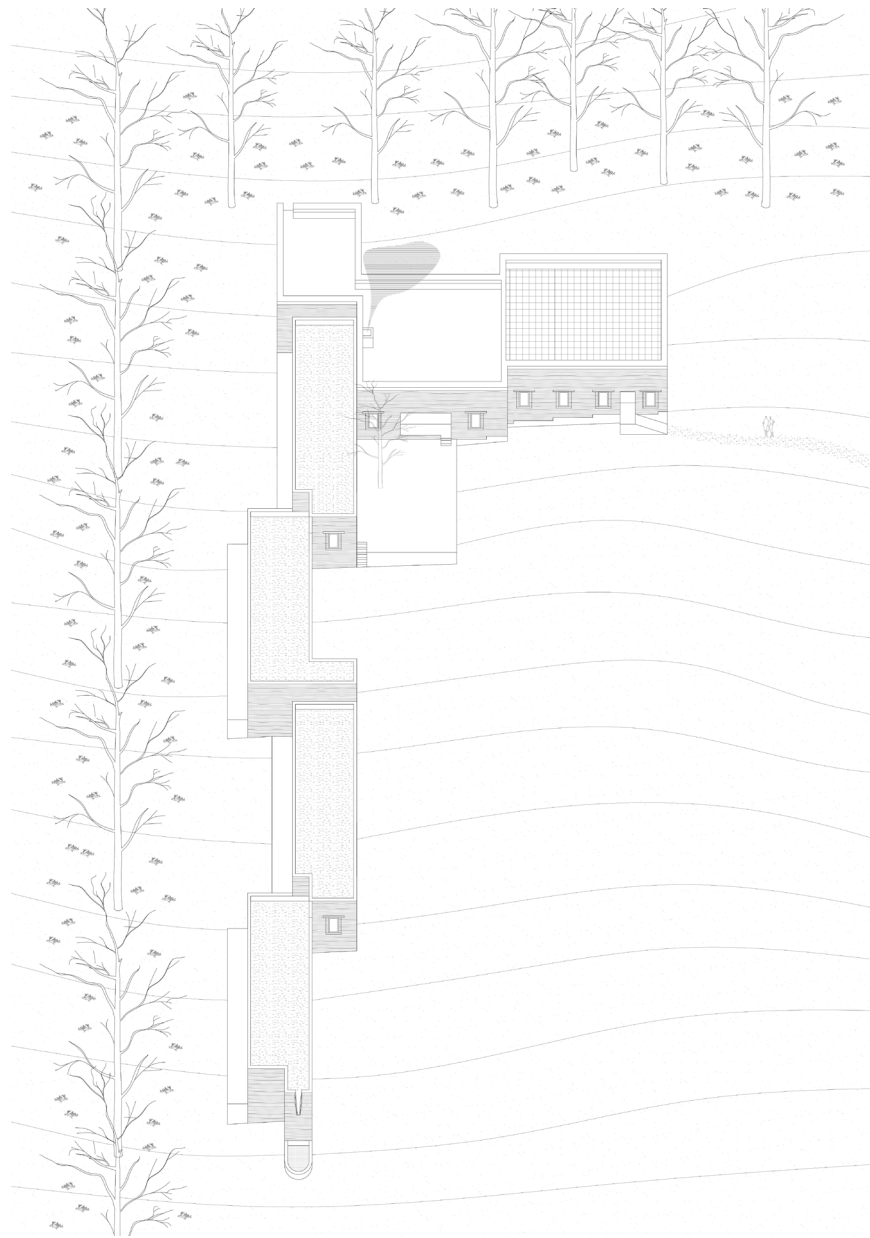


*Climate concepts
concrete rain gutter*

PART VI

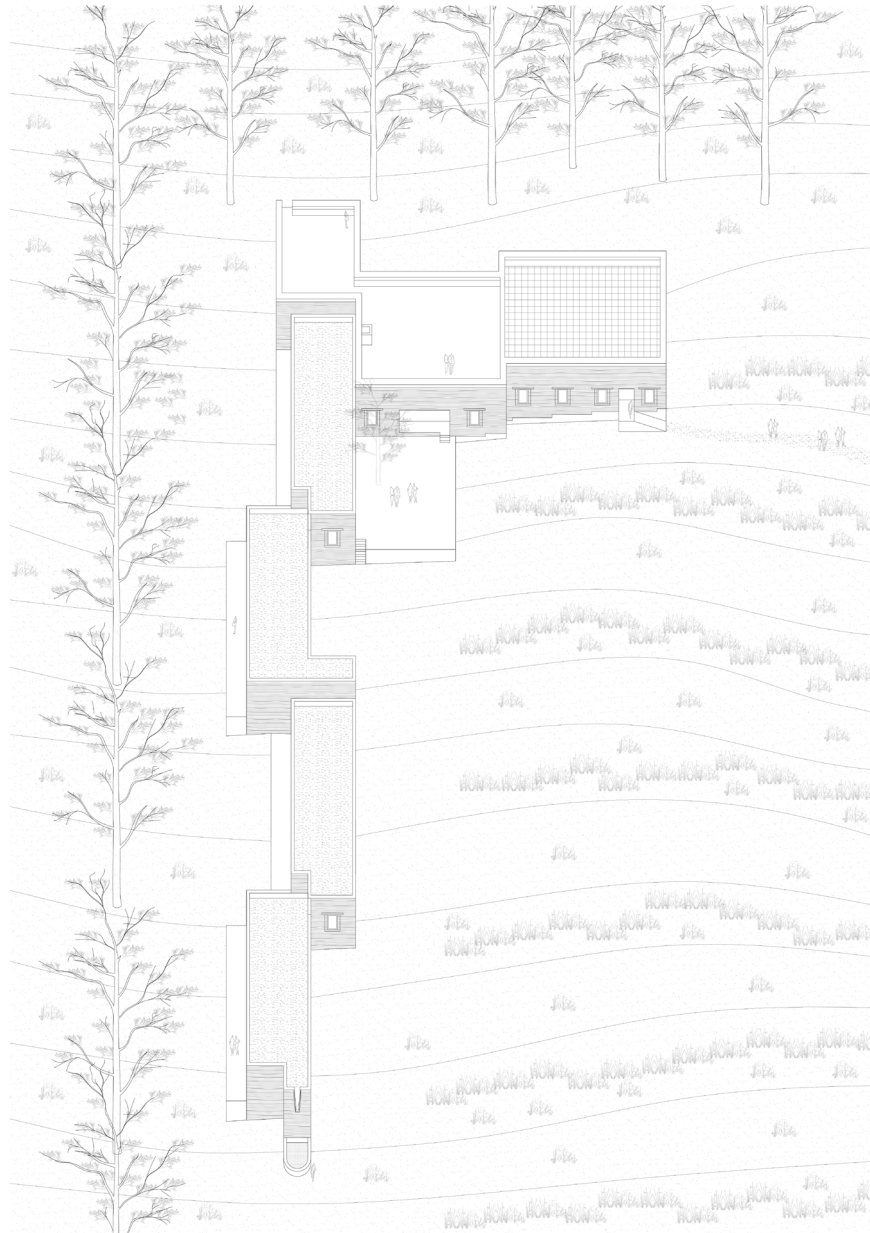
Epilogue

VI. Epilogue



Winter at the Guesthouse

VI. Epilogue



Spring at the Guesthouse

VI.Epilogue



Thank you...