

THE OBLIQUE & THE APPROPRIATION

A CATALYST FOR URBAN ACTIVITIES

MSC4 PUBLIC BUILDING 2022/2023 - PUBLIC CONDENSOR - XAM ADAN - 4889207

WHEN INCLINED, THE WALL BECOMES EXPERIENCEABLE

PAUL VIRILLIOO & CLAUDE DE PARENT



PUBLIC SPACE
IN WHICH INDIVIDUALS EXPRESS THEMSELVES FREELY

1. LINEARITY = LESS INTERACTION

"PUBLIC" BUILDING
REDUCES PUBLIC SPACE AND REPLACES IT WITH INTERIOR PROGRAM WITH OPENING HOURS AND OWN SET OF RULES

2. ROW TYPOLOGY = NO COMMUNAL SPACE

PUBLIC BUILDING + PUBLIC SPACE
WHY NOT BOTH? ARCHITECTURE SHAPES PUBLIC SPACE THAT POTENTIALLY CAN ADD MORE VALUE TO THE PUBLIC SPACE

3. COURTYARD TYPOLOGY = PRIVATE COMMUNAL SPACE

4. BREAK OPEN COURTYARD = U-SHAPE WITH PUBLIC COMMUNAL SPACE

5. LINK & ALTERNATE = MEANDERING COURTYARDS

6. ZIGZAG PATTERN = PERMEABLE SHAPE

1. COMMUNAL SPACES IN COURTYARDS, SURROUNDED BY CIRCULATION

2. INTERSECTED PROGRAM WITH CIRCULATION = HABITABLE CIRCULATION FOR INCREASED INTERACTIONS

3. VIEWS FOR SOCIAL INTERACTION AND EXPLORATION

4. HETEROGENOUS INTERACTION & PERSPECTIVES VS MONOTONOUS DUE TO LINEARITY

5. CORNERS SLOW USERS DOWN

6. INVITE CONTEXT, NATURE AND DAYLIGHT IN

7. SUITABLE FOR GAINING HEIGHT

8. REDUCES DISTANCE BETWEEN SPACES, BY EXPANDING CONTACT AREA

9. LINK & ROTATE = ENHANCED CHARACTERISTICS

1. PROGRAM DISTRIBUTION: COMMUNAL VS INDIVIDUAL

2. VISUAL CONNECTIONS ON ALL LAYERS, DUE TO DIAGONAL

3. FORM PROVOKES ACTIVITY INSIDE AND OUTSIDE AT THE SAME TIME

4. PORTAL CONSTRUCTION FOR STRUCTURE, FLOW, SPACE AND DAYLIGHT

5. LEVELS SEPERATED FROM PORTAL STRUCTURE

6. MAIN STRUCTURE FREE OF VENTILATION CANALS

BERLIN, FRIEDRICHSHAIN & STREETCULTURE

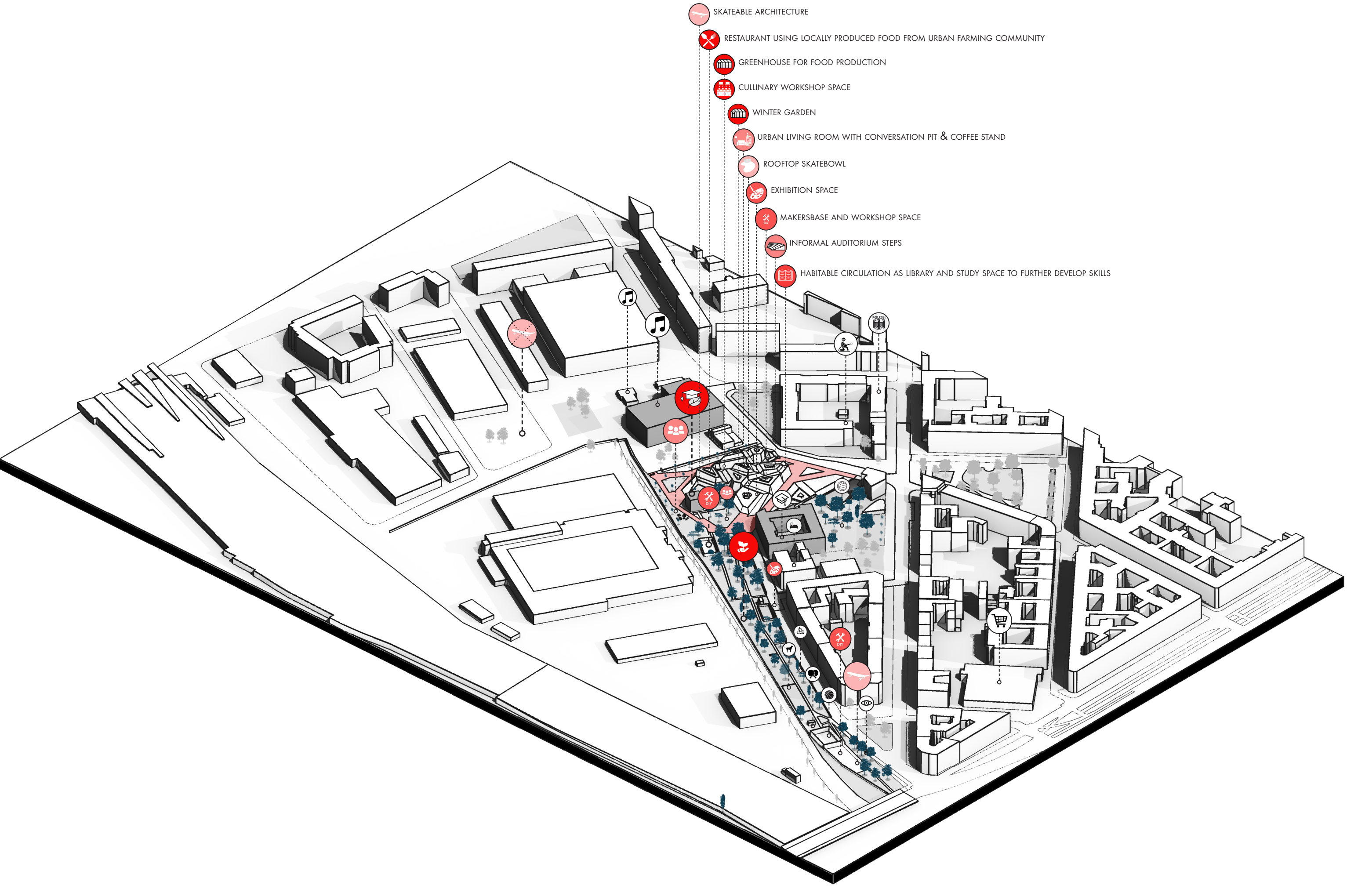


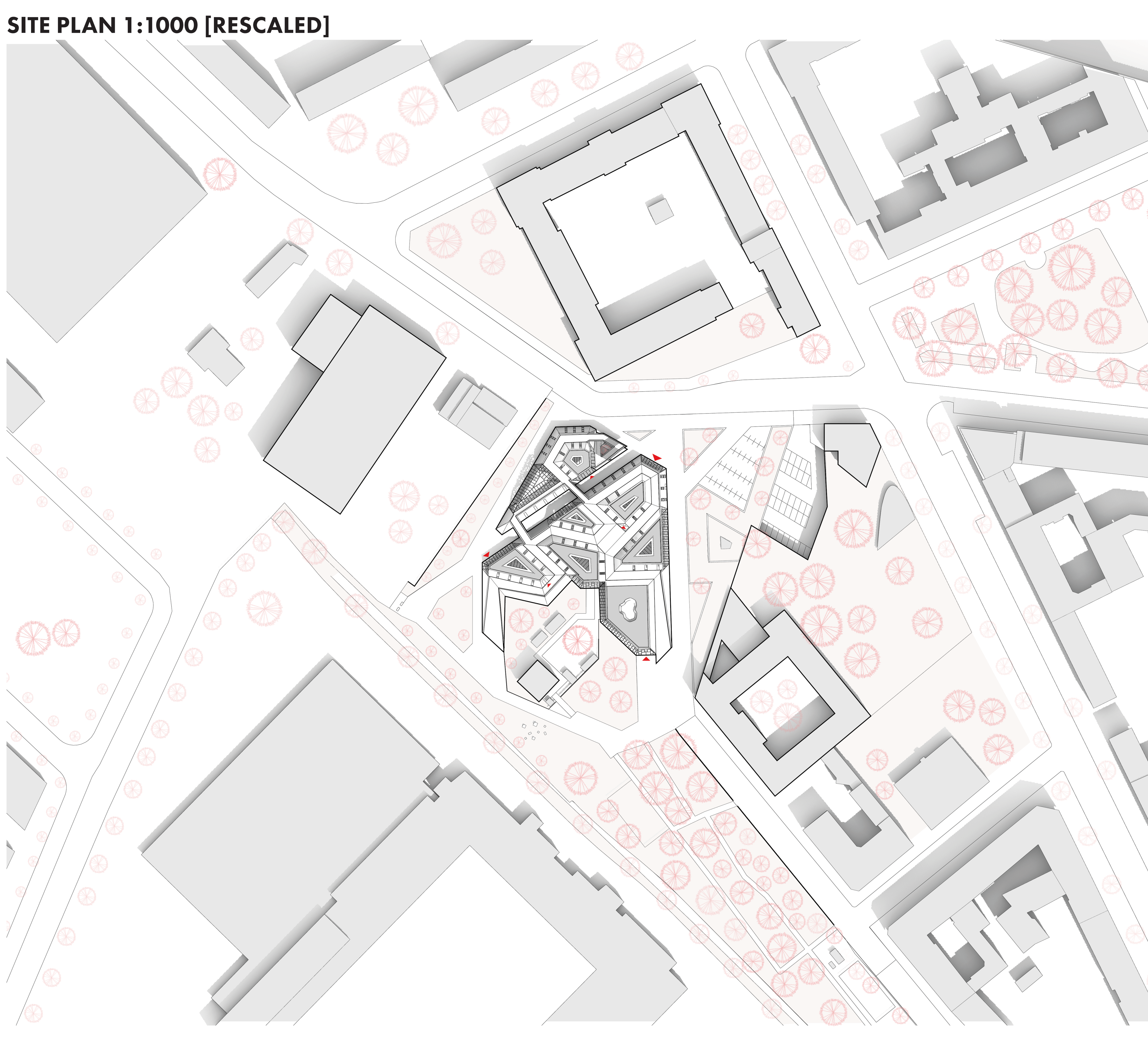
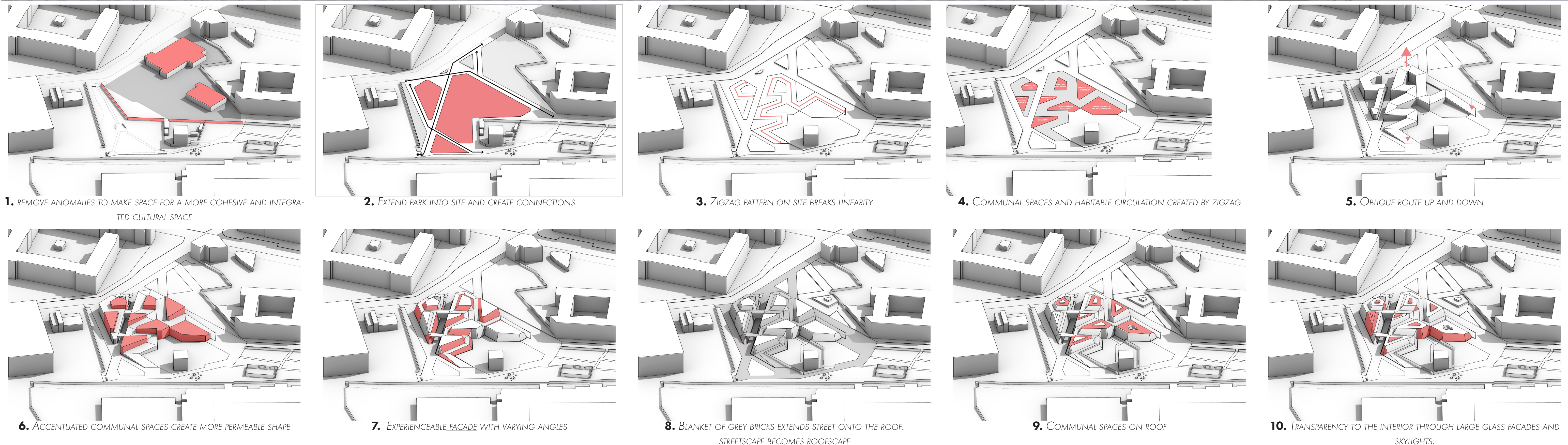
GREAT ACCESSIBILITY

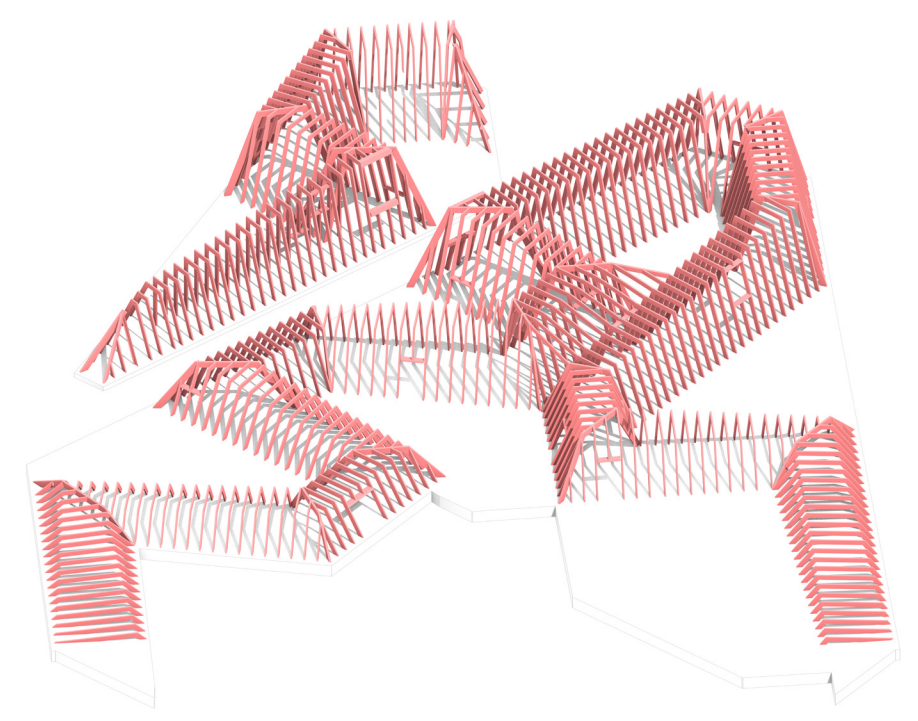
DIVERSE CONTEXT

CONTRASTING THRESHOLD

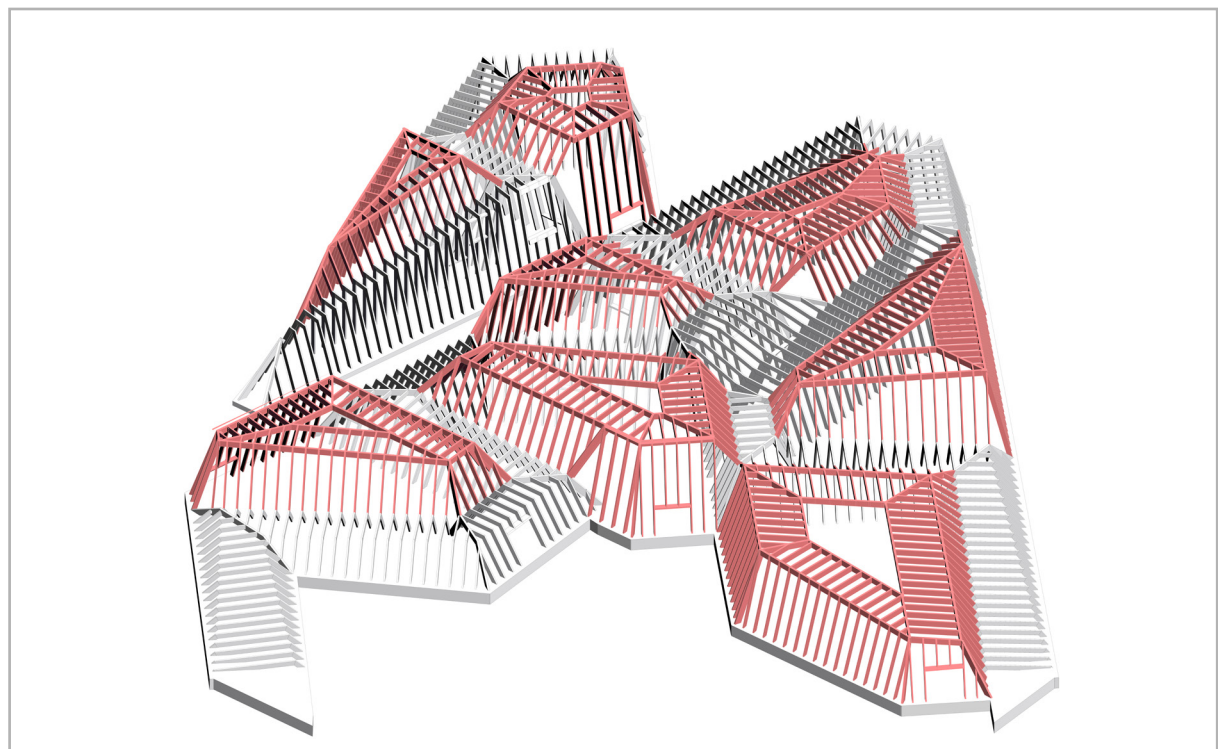
SURROUNDED BY GREEN



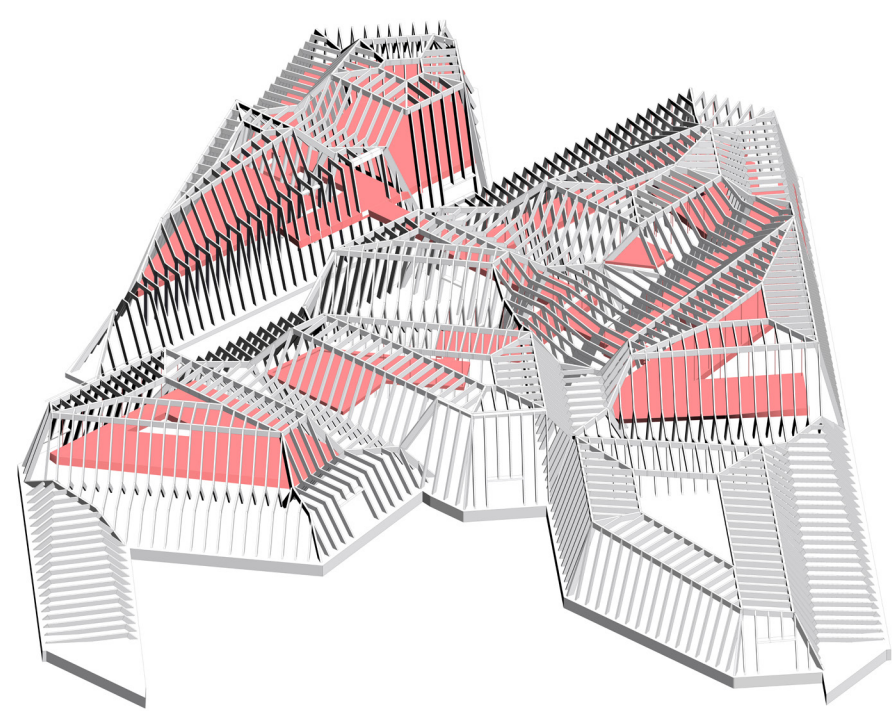




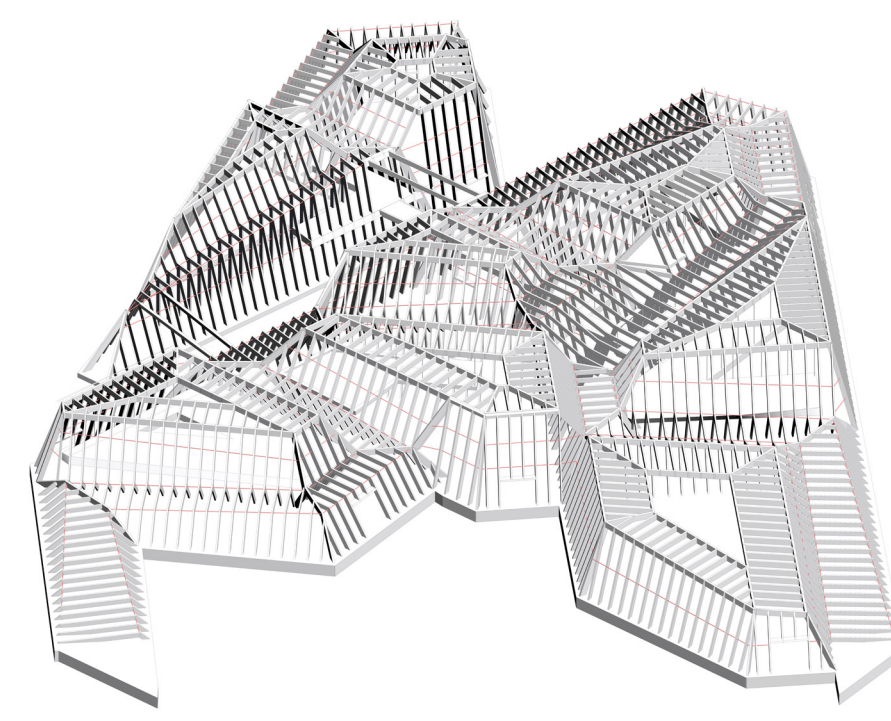
GLIAM STRUCTURE ALONG ZIGZAG STRUCTURES THE BUILDING



GLIAM STRUCTURE FOR COMMUNAL SPACES AS EXTENDED PORTALS FROM ZIGZAG COMING TOGETHER IN MULTIPLE DIRECTIONS



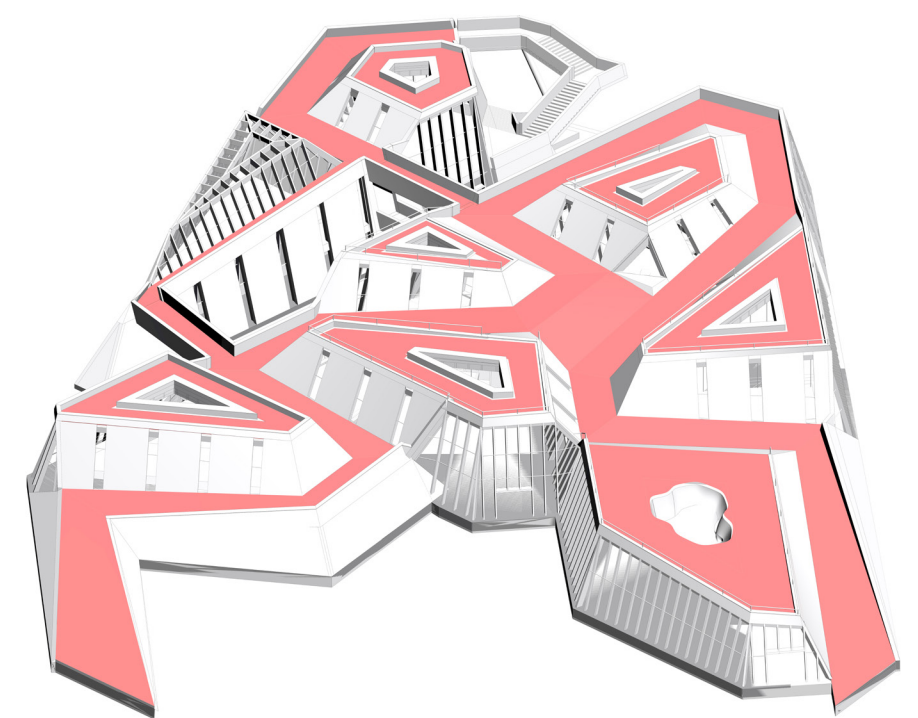
3 TYPES OF APPROACHING THE STRUCTURE OF THE FLOOR, SHAPING THE 1ST LEVEL



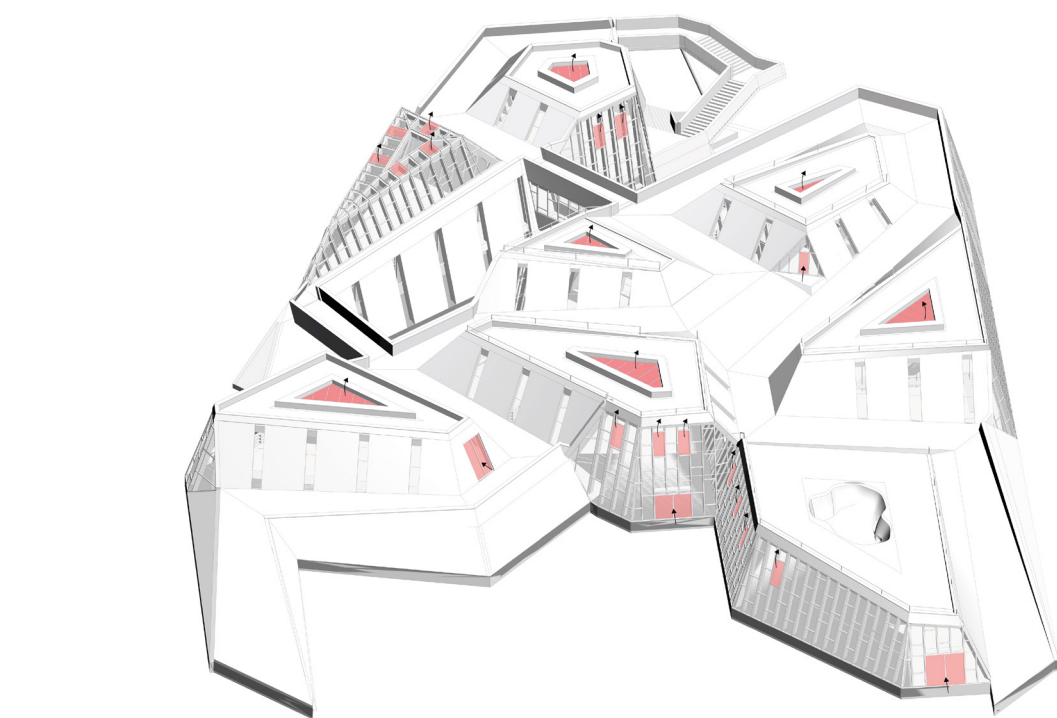
STABILITY IS CREATED THROUGH STEEL HORIZONTAL PIPES. THIS WAY CROSSES COULD BE AVOIDED



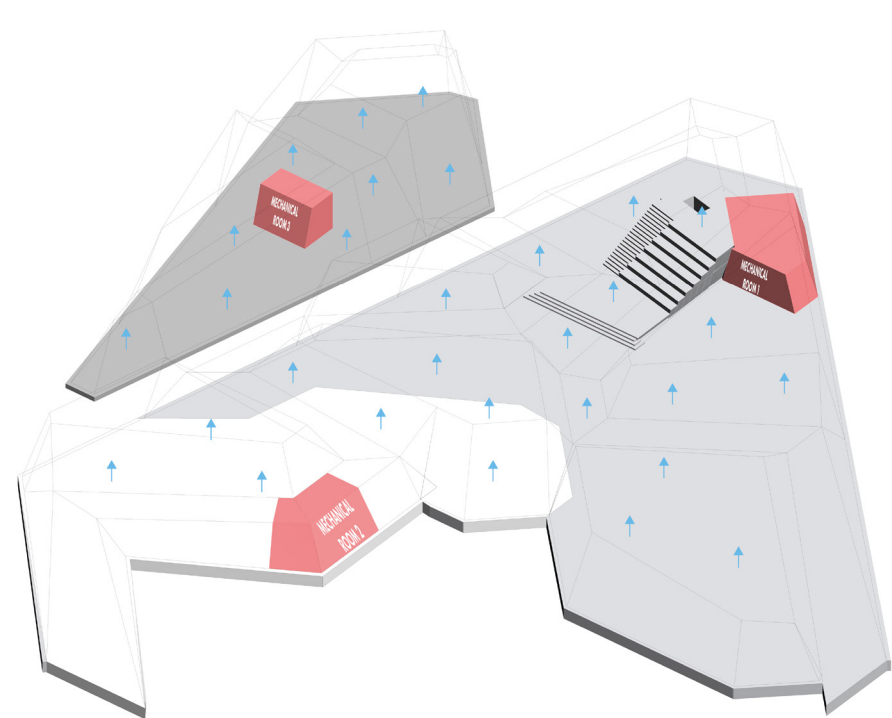
CONNECTIONS BETWEEN BUILDINGS AND LEVELS IN WHICH STAIRS BECOME A DISTINCTIVE ELEMENT



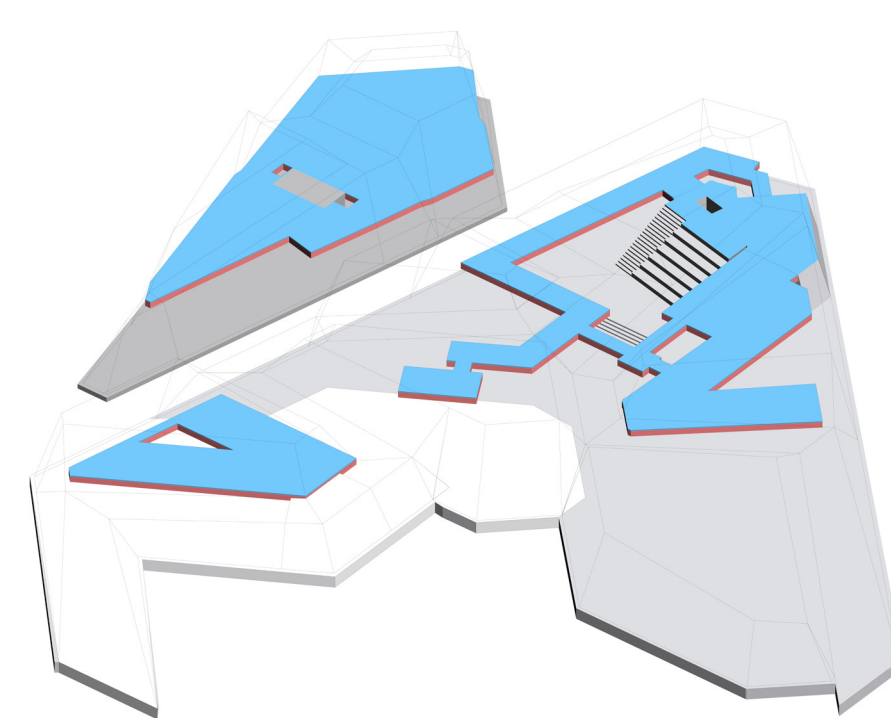
CLT WALLS AND ROOF PROVIDE EXTRA STABILITY



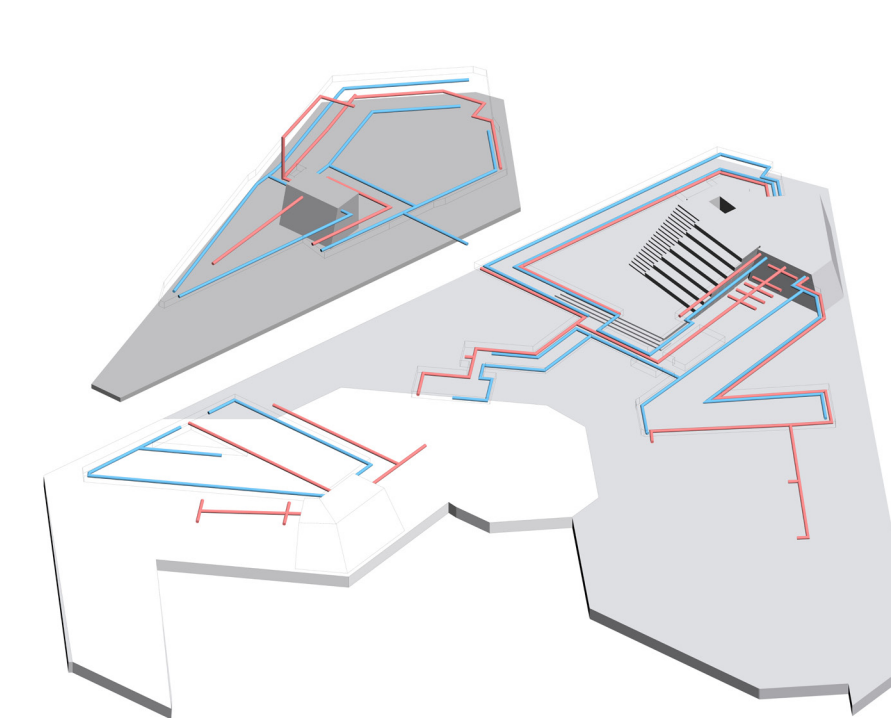
SKYLIGHTS AND OPENINGS IN GLASS FACADES PROVIDE OPPORTUNITY FOR NATURAL VENTILATION



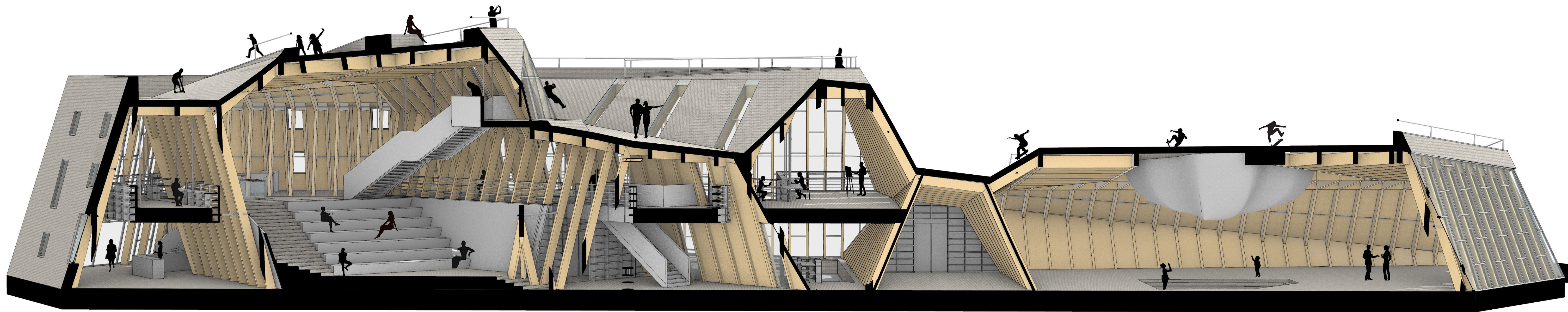
AIR SUPPLY FROM GROUND FLOOR TO MAXIMIZE STACK EFFECT WITH THE SKYLIGHTS. A GROUND BASED VENTILATION SYSTEM WILL BE USED, BACKED UP BY 3 TECHNICAL SPACES



TO KEEP PORTAL STRUCTURE FREE FROM VISIBLE VENTILATION PIPES, THE HANGING FLOORS WILL FUNCTION AS AIRSUPPLY AND AIR EXHAUST

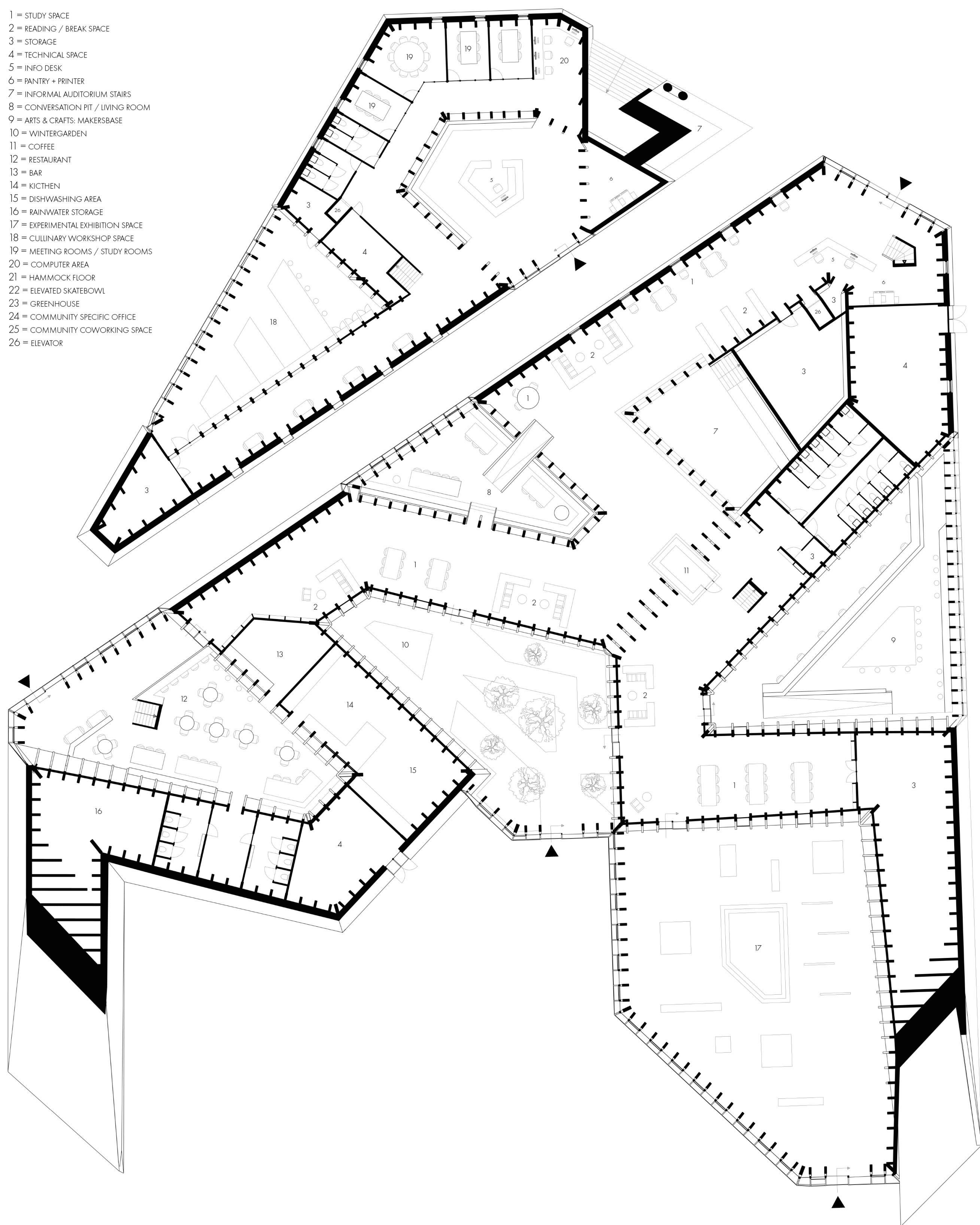


VENTILATION PIPES DON'T CROSS SO THEY CAN STAY HIDDEN IN THE FLOORS

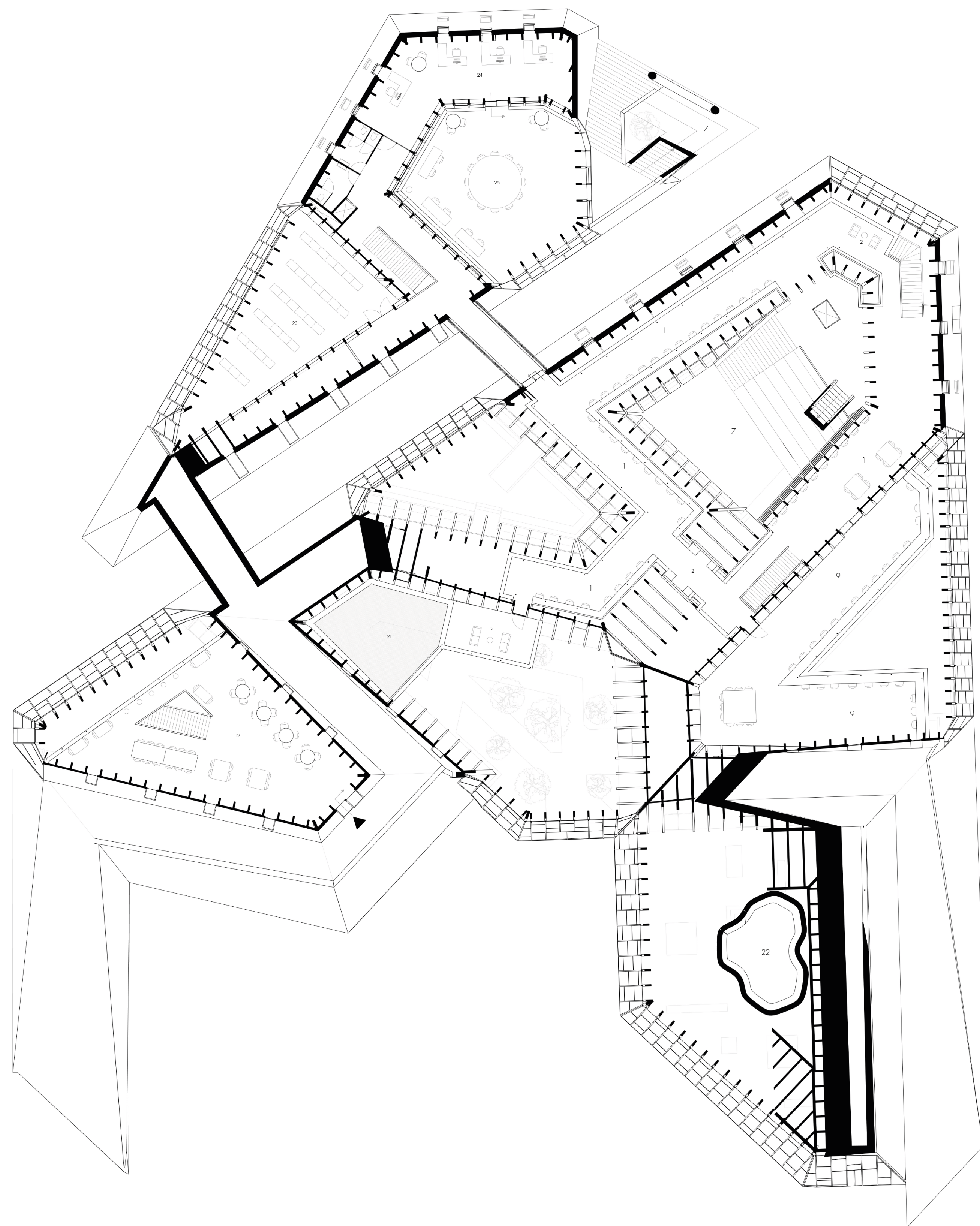


GROUND FLOOR

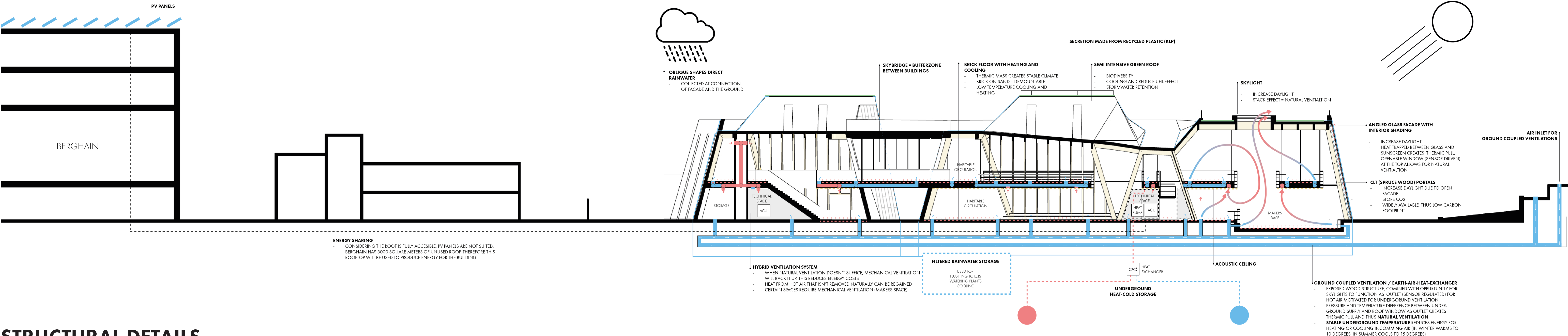
- 1 = STUDY SPACE
- 2 = READING / BREAK SPACE
- 3 = STORAGE
- 4 = TECHNICAL SPACE
- 5 = INFO DESK
- 6 = BATHY + PRINTER
- 7 = INFORMAL AUDITORIUM STAIRS
- 8 = CONVERSATION / PT / LIVING ROOM
- 9 = ARTS & CRAFTS MAKERSBASE
- 10 = WINTERGARDEN
- 11 = COFFEE
- 12 = RESTAURANT
- 13 = BAR
- 14 = KITCHEN
- 15 = DISHWASHING AREA
- 16 = RAINWATER STORAGE
- 17 = EXPERIMENTAL EXHIBITION SPACE
- 18 = CULINARY WORKSHOP SPACE
- 19 = MEETING ROOMS / STUDY ROOMS
- 20 = COMPUTER AREA
- 21 = HAMMOCK FLOOR
- 22 = ELEVATED GARDEN
- 23 = GREENHOUSE
- 24 = COMMUNITY SPECIFIC OFFICE
- 25 = COMMUNITY COWORKING SPACE
- 26 = ELEVATOR



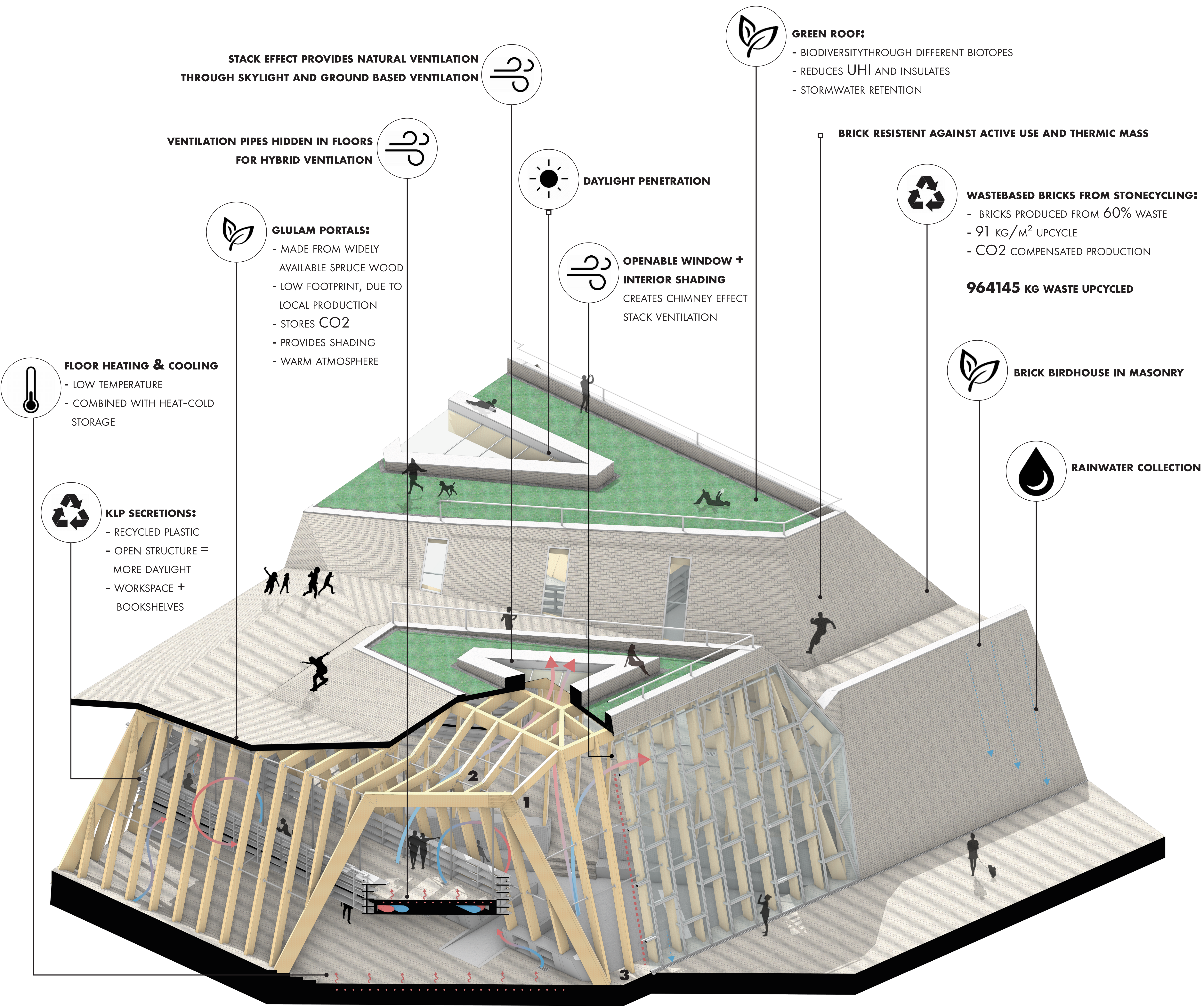
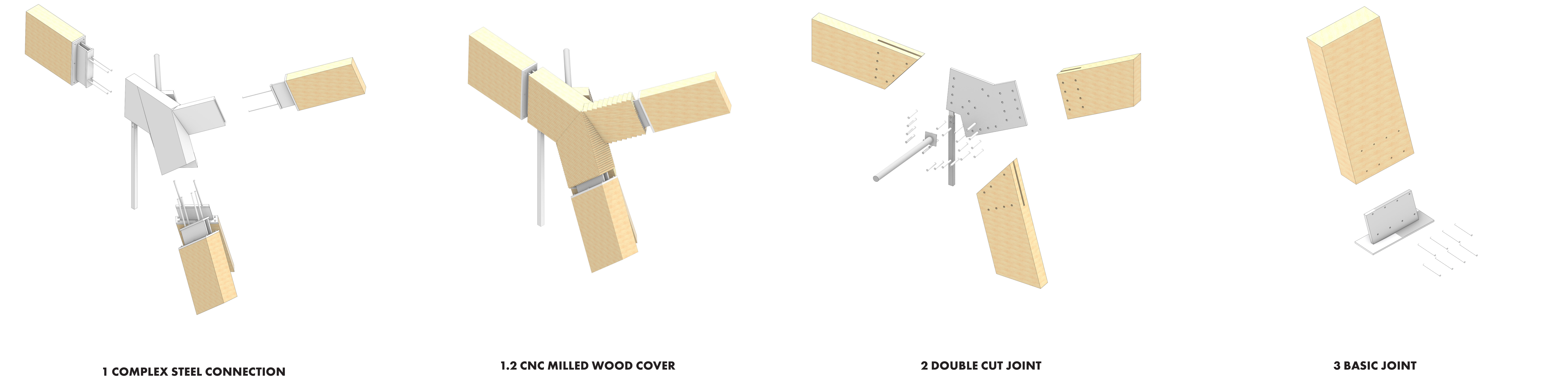
FIRST FLOOR



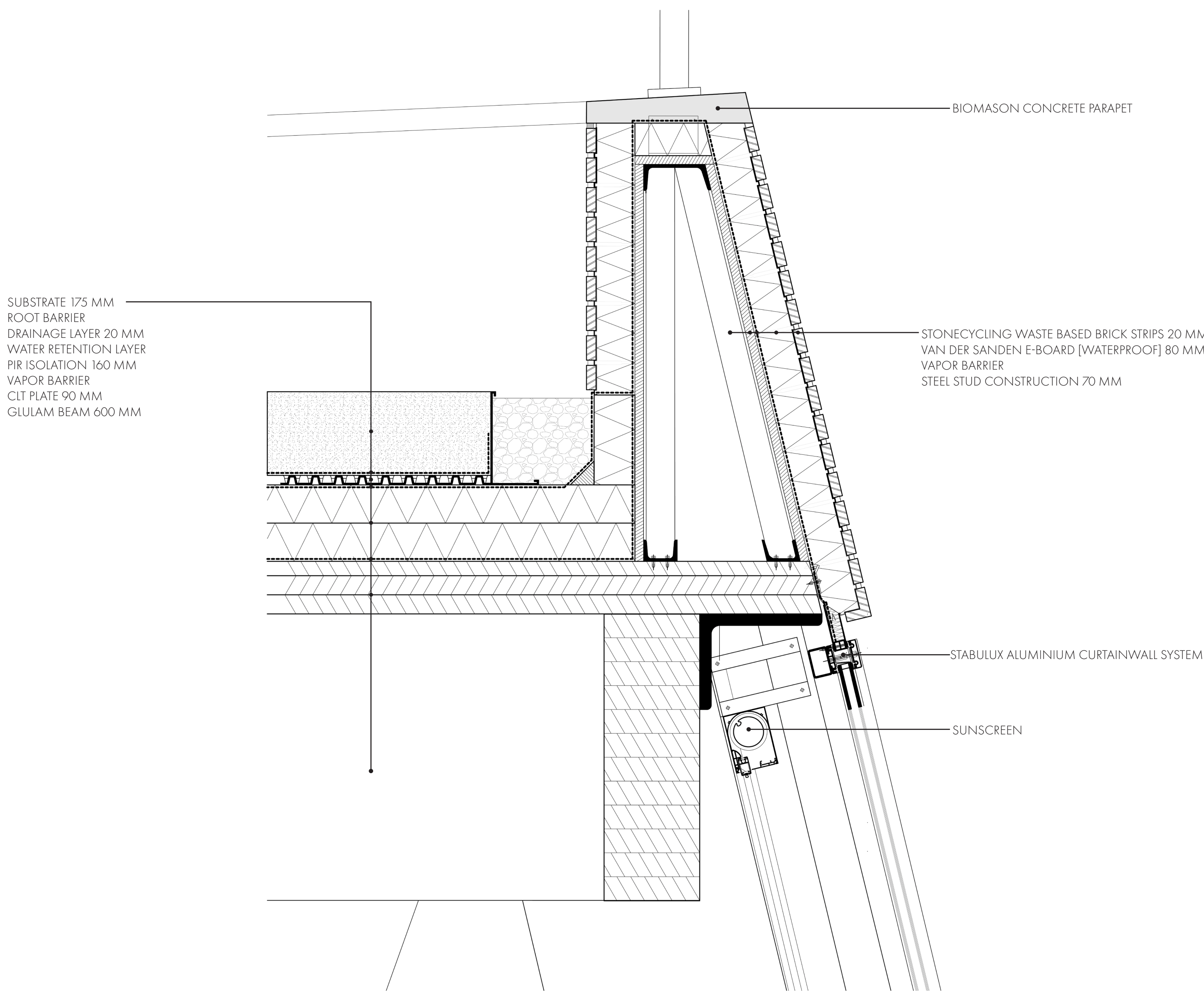
CLIMATE SECTION



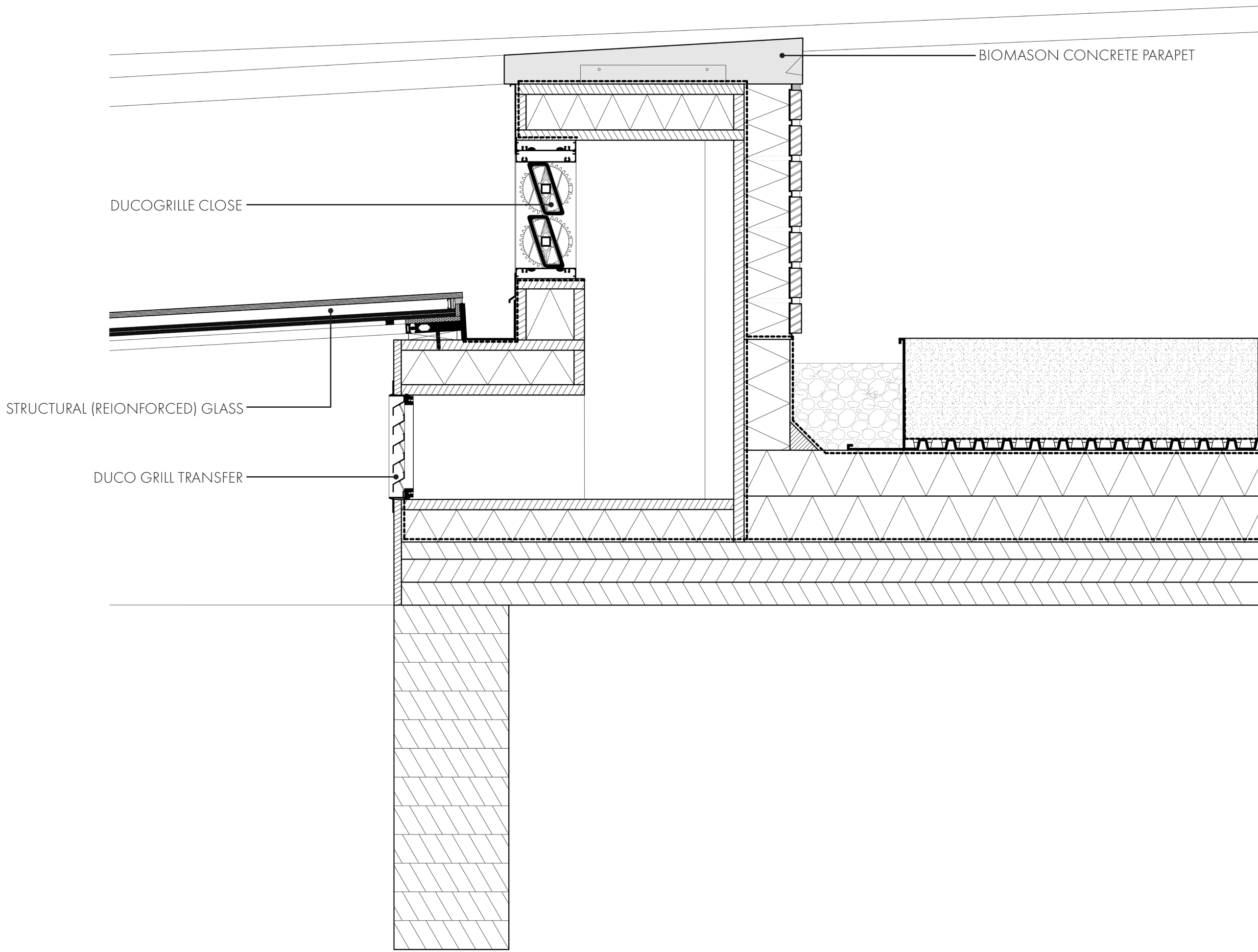
STRUCTURAL DETAILS



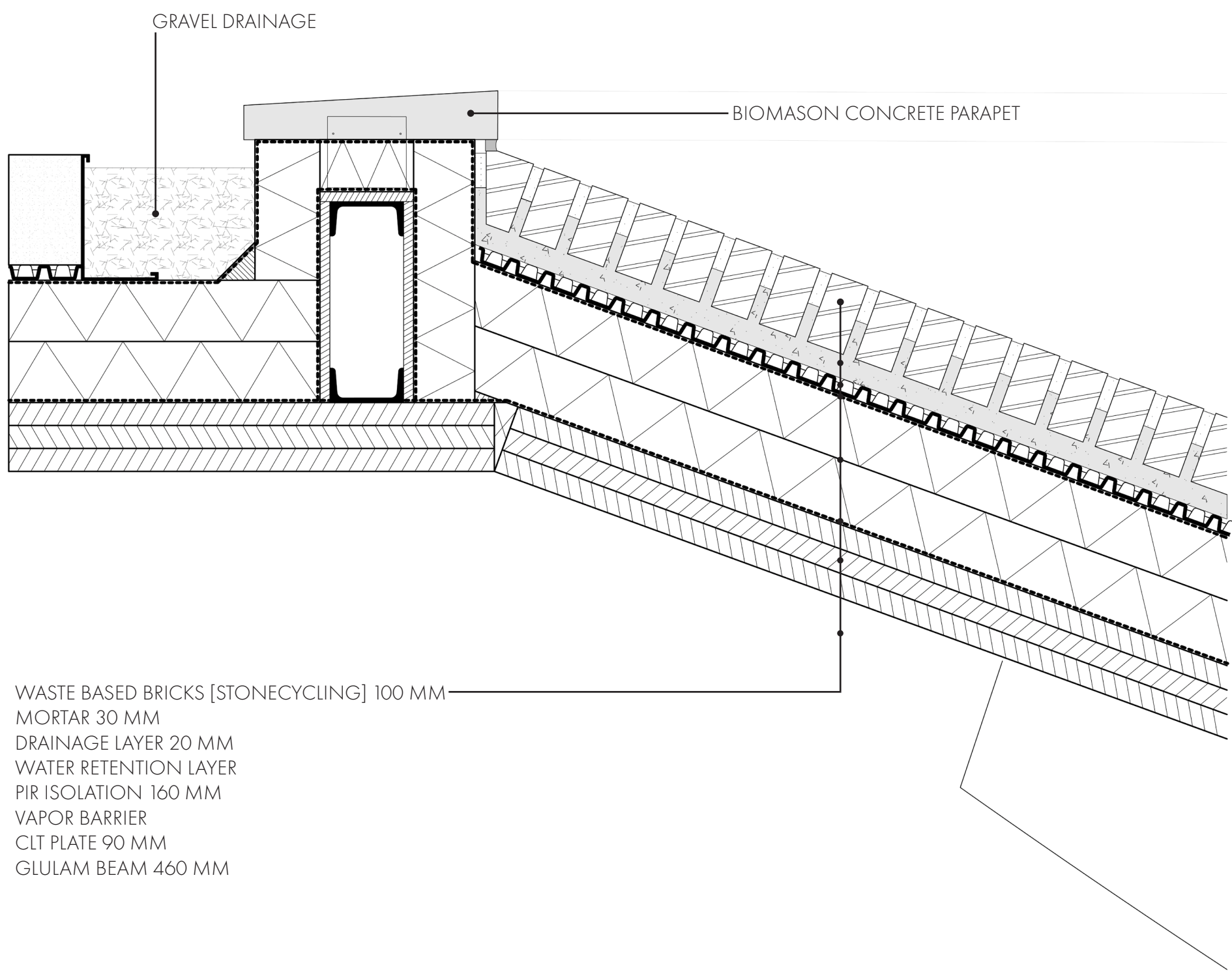
DETAIL 1: ROOF EDGE



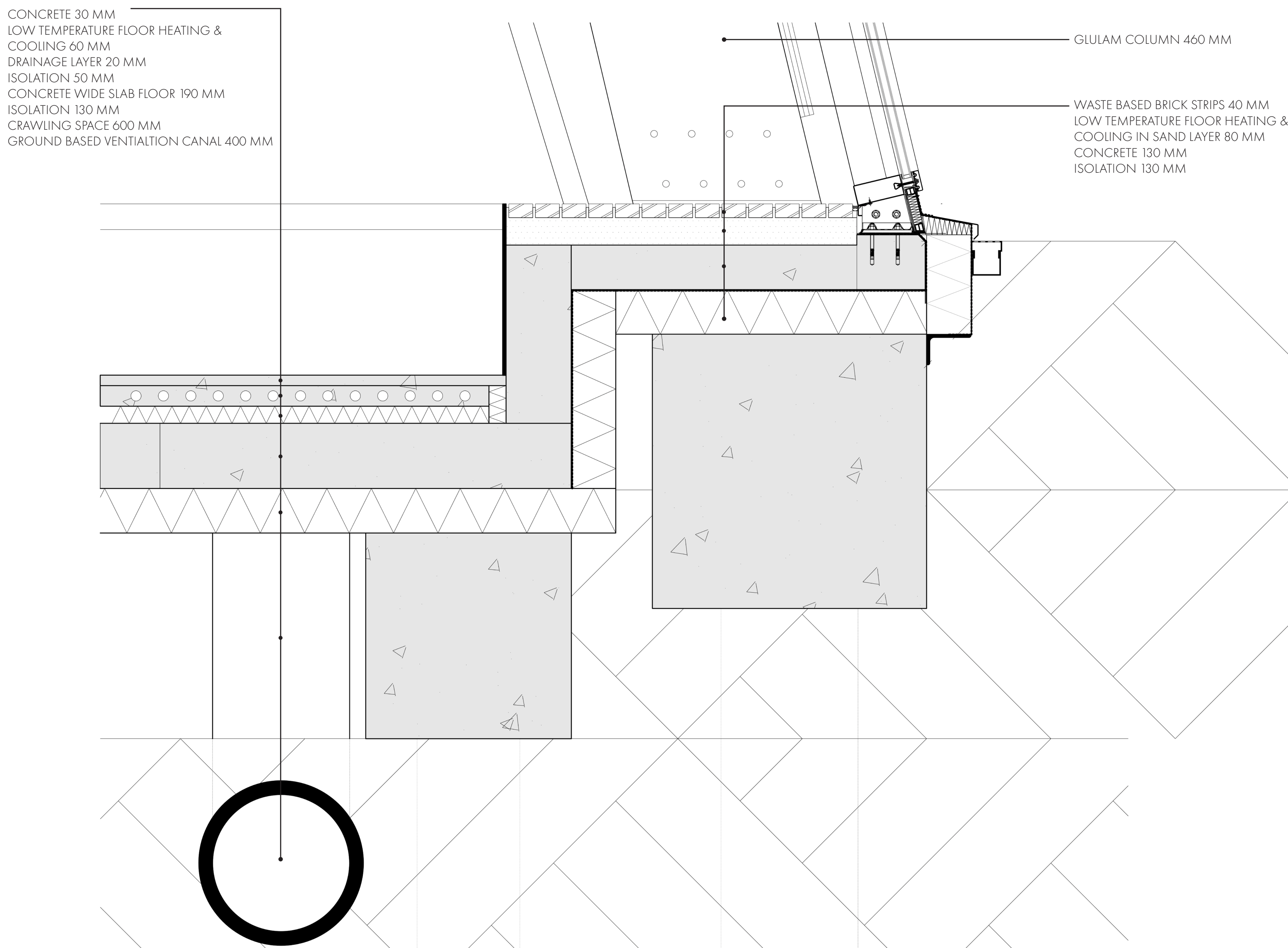
DETAIL 2: SKYLIGHT



DETAIL 3: PARAPET



DETAIL 4: GROUND FLOOR



1:20 FACADE FRAGMENT [RESCALED]

