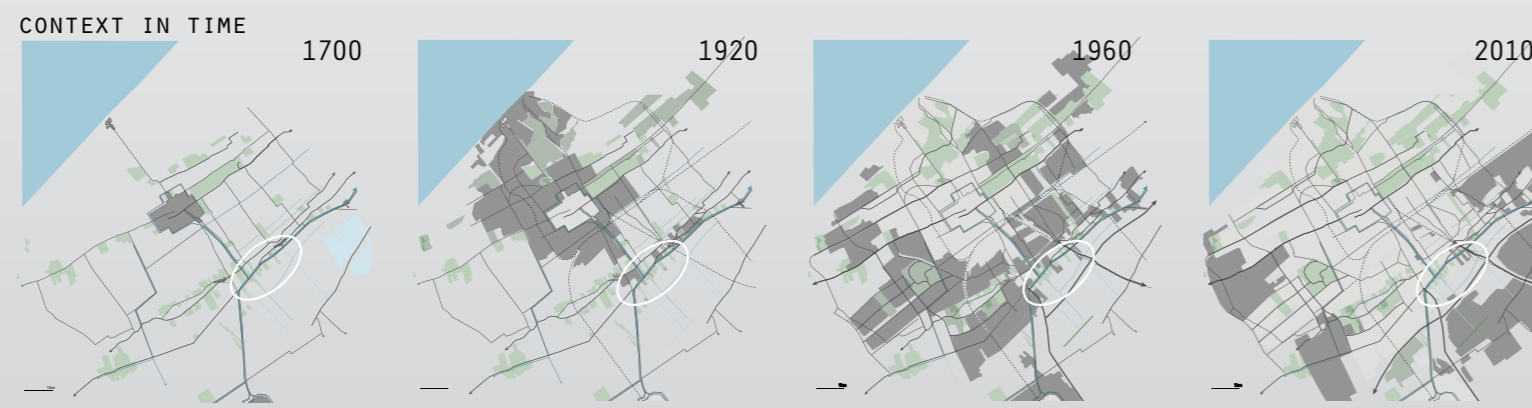
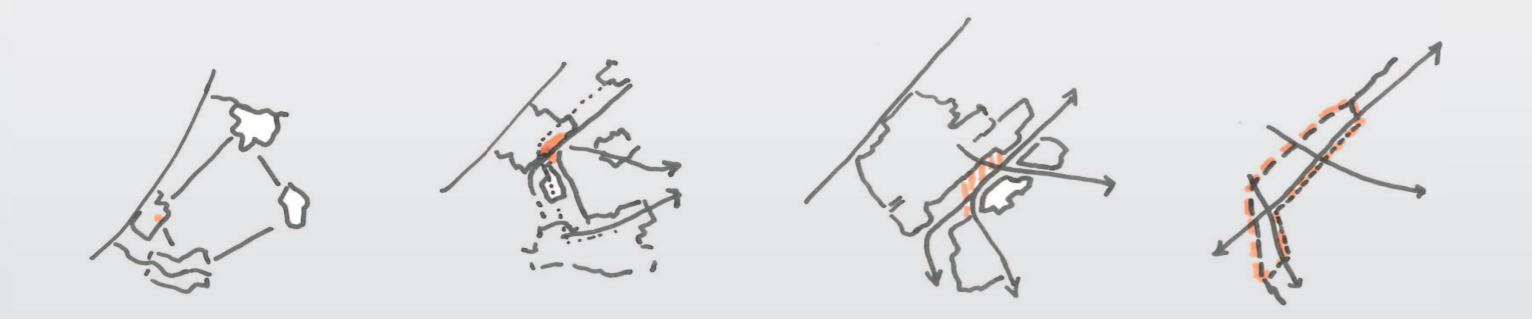


THE LAND-IN-BETWEEN

A SPATIAL INVESTIGATION ON THE FUTURE DEVELOPMENT OF THE URBAN FRINGE OF THE A4/VLIETZONE, THE HAGUE

CONTEXT IN SCALE RANDSTAD ZUIDVLEUGEL STADSREGIO HAAGLANDEN VLIETZONE



INTRODUCING THE SITE AND PROBLEM STATEMENT

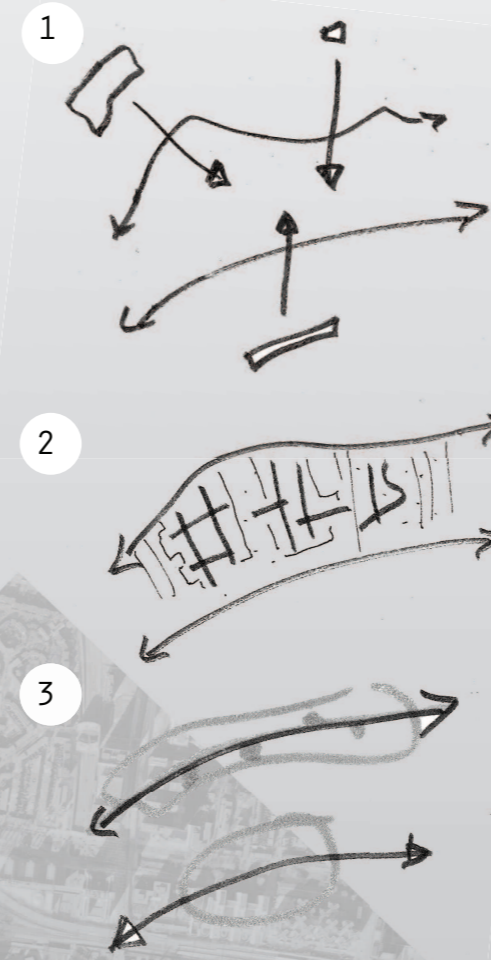
THIS GRADUATION PROJECT FOCUSES ON THE A4/VLIETZONE, AN AREA OF APPROXIMATELY 570 HA. LARGE, LOCATED IN THE SOUTH WESTERN EDGE OF THE MUNICIPALITY OF THE HAGUE WHICH IS ENCLOSED BY THE VLIET (AN OLD HISTORIC WATERWAY, WITH CULTURAL HERITAGE VALUE) AND THE NATIONAL HIGHWAY A4 AND MORE RECENTLY ENCLOSED IN-BETWEEN THE DIFFERENT URBAN DEVELOPMENTS OF THE HAAGLANDEN REGION SPECIFICALLY BY THE SO CALLED "VINEX" LOCATIONS OF YPENBURG AND LEIDSCHENVEEN.

WHILE THE VLIETZONE HAS IN GEOGRAPHICAL TERMS BECOME A CENTRAL ZONE IN THE HAAGLANDEN REGION, STILL THE VLIETZONE CAN BE PERCEIVED AS THE URBAN FRINGE OF THE CITY OF THE HAGUE WITH THE ACCOMPANYING TYPICAL MORE EXTENSIVE LAND-USES, SUCH AS AS GOLF COURTS, ALLOTMENT GARDENS, A THEME PARK, LIGHT INDUSTRIAL AREAS, ALL WITH SOME MEADOWS IN BETWEEN.

THE MAIN ASSIGNMENT FOR THE A4/VLIETZONE IS DERIVED FROM THE FACT THAT DEVELOPMENTS THAT ON FIRST SIGHT APPEARED TO BE UNRELATED AND THAT ORIGINATED FROM A DIFFERENT PERIOD OF TIME, HAVE BEEN ASSEMBLED ON A LIMITED TERRITORY AND TOGETHER MAKE UP THE SPATIAL CHARACTERISTICS OF A SITE THAT IS A VERY LIKELY TARGET FOR A NEW RANGE OF SPATIAL DEVELOPMENTS. HOW TO ADDRESS THESE FUTURE DEVELOPMENTS AND HOW TO TAKE INTO ACCOUNT THE SPECIAL SPATIAL CHARACTERISTICS OF THIS SITE IS THE RELEVANT QUESTION FOR THIS GRADUATION PROJECT.

URBAN REGENERATION

WITH THE SCOPE OF URBAN PLANNING AND DESIGN SHIFTING FROM THE NOTION OF THE COMPACT CITY TOWARDS THAT OF THE NETWORK CITY, I THINK ALSO THE SCOPE OF URBAN REGENERATION HAS BEEN EXTENDED. NOT ONLY INNER URBAN AREAS BUT ALSO AREAS THAT ARE HEAVILY AFFECTED BY URBAN DEVELOPMENTS AND INFRASTRUCTURAL CONSTRUCTION REQUIRE OUR ATTENTION. ESPECIALLY FOR THEIR HEAVY DYNAMICS, CONTINUOUS TRANSFORMATIONS, AND UNCERTAIN FUTURE, IT NEEDS TO BE CHALLENGED BY URBAN PLANNERS AND DESIGNERS WITH A FOCUS ON THEIR REGENERATION INSTEAD OF PERCEIVING IT AS TABULA



READING THE AREA IN DIFFERENT WAYS, RECOGNIZING ITS NEITHER URBAN NOR RURAL CONDITION; IT IS POSSIBLE TO REFLECT ON A SET OF MULTIPLE ASSIGNMENTS FOR THE AREA DERIVED FROM PRACTICE AND LITERATURE;

FROM THE PRACTICE:

1) *THE VLIETZONE STRATEGICALLY POSITIONED; ACCOMODATING FUTURE SPATIAL CLAIMS.*

- THE VLIETZONE WILL PLAY AN ESSENTIAL ROLE, AS THE LAST REMAINING LARGE SITE WHERE LARGE DEVELOPMENTS COULD TAKE PLACE, FOR STRENGTHENING THE HAGUES'S PERSPECTIVES WITHIN THE MUNICIPAL BOUNDARIES (WERKDOCUMENT A4/VLIETZONE, 2010).

FROM LITERATURE:

2) *THE RURAL URBAN FRINGE AS A ZONE OF PROBLEMS AND THE SPATIAL ORGANIZATION OF THE A4/VLIETZONE AREA:* IN LITERATURE THE ORGANISATION OF URBAN FRINGE ZONE IS WIDELY STUDIED AND CRITICIZED.

- THE DIFFERENT FUNCTIONS OF THE URBAN FRINGE SEEMS TO BE IN CONFLICT AS THEIR DEVELOPMENTS HAVE LONG BEEN CONSIDERED AS SEPARATE ASSIGNMENTS. THEREFORE WE CAN SPEAK OF A SECTORAL APPROACH (HAMER, 2009).

- ANOTHER DISCOMFORTING PROBLEMATIC IS THE PRESENCE OF LARGE SCALE INFRASTRUCTURE FUNCTIONING AS A BARRIER BETWEEN THE DIFFERENT PROGRAMMES IN THE URBAN FRINGE (IBED). ESPECIALLY URBAN EXPANSION LEAP-FROGGING THE NATIONAL HIGHWAY ADDS TO THE PROBLEMATIC.

- FINALLY THE OFTEN FUNCTIONAL ZONING PLANS, SEEMS TO BE IN CONFLICT WITH DEVELOPED PROGRAMME OFTEN (SEMI) PUBLIC, AS THEY PROVIDE LITTLE PUBLIC QUALITY (IBED).

FROM LITERATURE:

3) *THE VLIETZONE IN THE LARGER METROPOLITAN CONTEXT. SOCIETAL CHALLENGES FOR THE URBANIZED LANDSCAPE:* DUE TO THE INCREASING RECOGNITION OF THE REGION AS A PLACE THAT SHAPES EVERYDAY LIFE, THERE IS ALSO AN INCREASING RECOGNITION ON THE BINDING ELEMENTS THAT SET UP ITS COLLECTIVE BACKGROUND (SCHRIJNEN, 2005; SIEVERTS, 2007, PALMBOOM, 2003);

IN THIS RESPECT THERE IS A RECOGNITION ON:

- INFRASTRUCTURE DESIGN, AS AN ASSIGNMENT THAT CONTRIBUTES TO THE CHARACTER OF THE CITY AGAIN, INSTEAD OF BEING PERCEIVED AS A 'MONOFUNCTIONAL REALM' (MOSSOP, 2006; SHANNON 2010).

- THE POTENTIAL OF OPEN SPACE OR THE ARRANGEMENT OF NEGATIVE SPACES AS ENCLOSED FRAGMENTS IN THE URBAN FIELD (DE BOECK, 2009, TUMMERS, 1997).

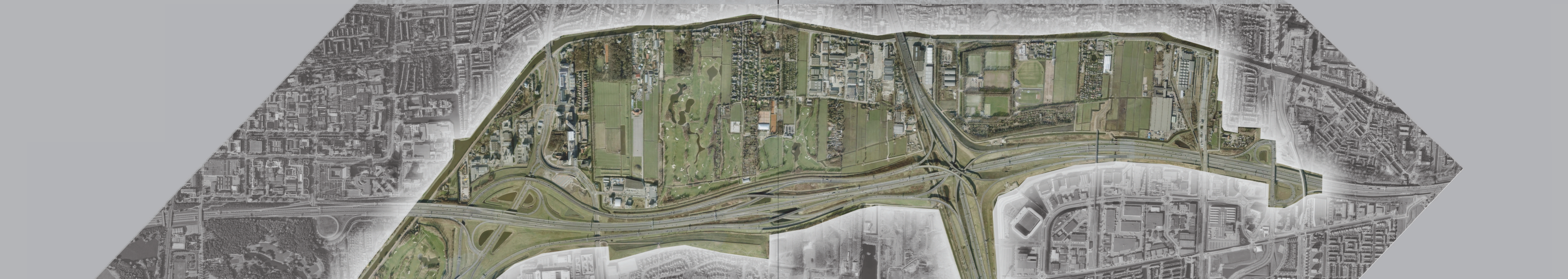
- THE VALUE OF CULTURAL HERITAGE CONTRIBUTING TO A NOTION OF COLLECTIVE NEEDS (SIEVERTS, 2007)

AIM:

GUIDED BY THE LITERATURE RESEARCH THE AIM OF THE PROJECT HAS BEEN DEFINED: THE AIM OF THE PROJECT WILL BE TO INTEGRATE THESE DIFFERENT DESIGN TASKS AT HAND, RECOGNIZING THE PLACE SPECIFIC CHARACTERISTICS OF THE A4/VLIETZONE IN ORDER TO PROVIDE A FRAMEWORK FOR FUTURE DEVELOPMENTS WHILST IMPROVING THE SPATIAL CONDITIONS OF THE AREA.

THE A4/VLIETZONE

PRACTICE & LITERATURE



PLAN & TYPOLOGICAL ANALYSIS

DESIGN EXPERIMENT

MOST IMPORTANT IN THE RESEARCH PROCESS IS THE RECOGNITION OF DIFFERENT SCALES AND THE CONTEXT OF WHICH THE A4/VLIETZONE IS PART.

1) THE SCALE OF THE SOUTHERN RANDSTAD WING; THE VLIETZONE INTERTWINED WITH THE LARGER INFRASTRUCTURAL NETWORK.

2) THE SCALE OF THE HAAGLANDEN CITYREGION; A: THE VLIETZONE NOT EMBEDDED IN THE LARGER URBAN STRUCTURE

B: THE VLIETZONE COMPARED WITH LARGER GREENSTRUCTURES IN THE CITYREGION

3) THE URBAN FRINGE; A: LANDGOEDEREN BIOTOPEN; PROTECTING HISTORICAL VALUE BUT WITH LITTLE INTEREST IN SPATIAL QUALITY.

B: FRAGMENTATION, MIXTURE OF FUNCTIONS AND

C: ACCESSIBILITY & INTERNAL CONNECTIVITY; LARGE INFRASTRUCTURAL BARRIERS & POOR CONNECTIVITY, THOUGH HIGHLY ACCESSIBLE.

TYPOLOGY RESEARCH; NEXT TO THE PLAN ANALYSIS CHARACTERISTIC TYPOLOGIES FOR THIS URBAN FRINGE ZONE HAVE BEEN STUDIED IN ORDER TO SUPPORT THE DESIGN EXPERIMENT: THE INFRASTRUCTURAL LINES



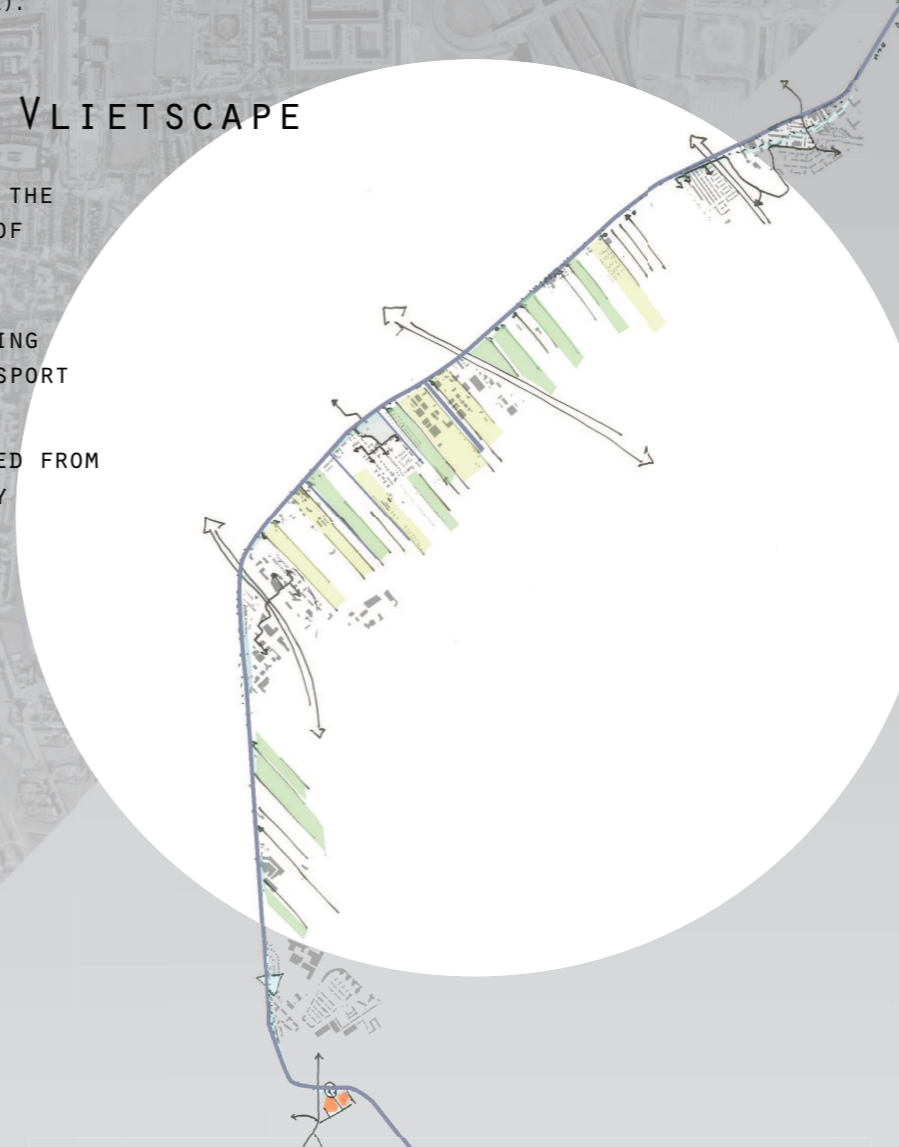
CONTEXT	OBJECT DETERMINED	VARIABLE
DETERMINED	PLAN	DESIGN
VARIABLE	ANALYSIS	EXPERIMENT
	TYPOLGY	EXPERIMENTAL
	RESEARCH	DESIGN

MODEL FROM STEENBERGEN, C.H., 2008. COMPOSING LANDSCAPES: ANALYSIS, TYPOLOGY AND EXPERIMENTS FOR DESIGN. BIRKHÄUSER, AFTER DE JONG & VAN DER VOORDT (2001).

THE DESIGN EXPERIMENT INTERRELATES WITH THE PLAN ANALYSIS AND TYPOLOGICAL RESEARCH; TOGETHER WITH THE THEORETICAL FRAMEWORK THE PLAN ANALYSIS PROVIDES A STARTING POINT FOR THE DESIGN MODELS. IN THE DESIGN PART A SET OF ALTERNATIVE FUTURES FOR THE SITE IS DISCOVERED BY KEEPING THE OBJECT OF STUDY (PROGRAMME, MIRT SCENARIO'S) VARIABLE. IN THIS WAY 4 MODELS HAVE BEEN DEVELOPED THAT REFLECT ON A DIFFERENT TREATMENT OF THE PRESENT INFRASTRUCTURE. DURING THE PROCES ALSO OTHER DESIGN PRINCIPLES, SUCH AS THE INTERRELATION WITH THE CULTURAL HERITAGE RELICS AND THE POTENTIAL OF THE EXISTING OPEN SPACE, WILL BE INTRODUCED REFLECTING ON THE PLAN ANALYSIS AND TYPOLOGICAL RESEARCH.

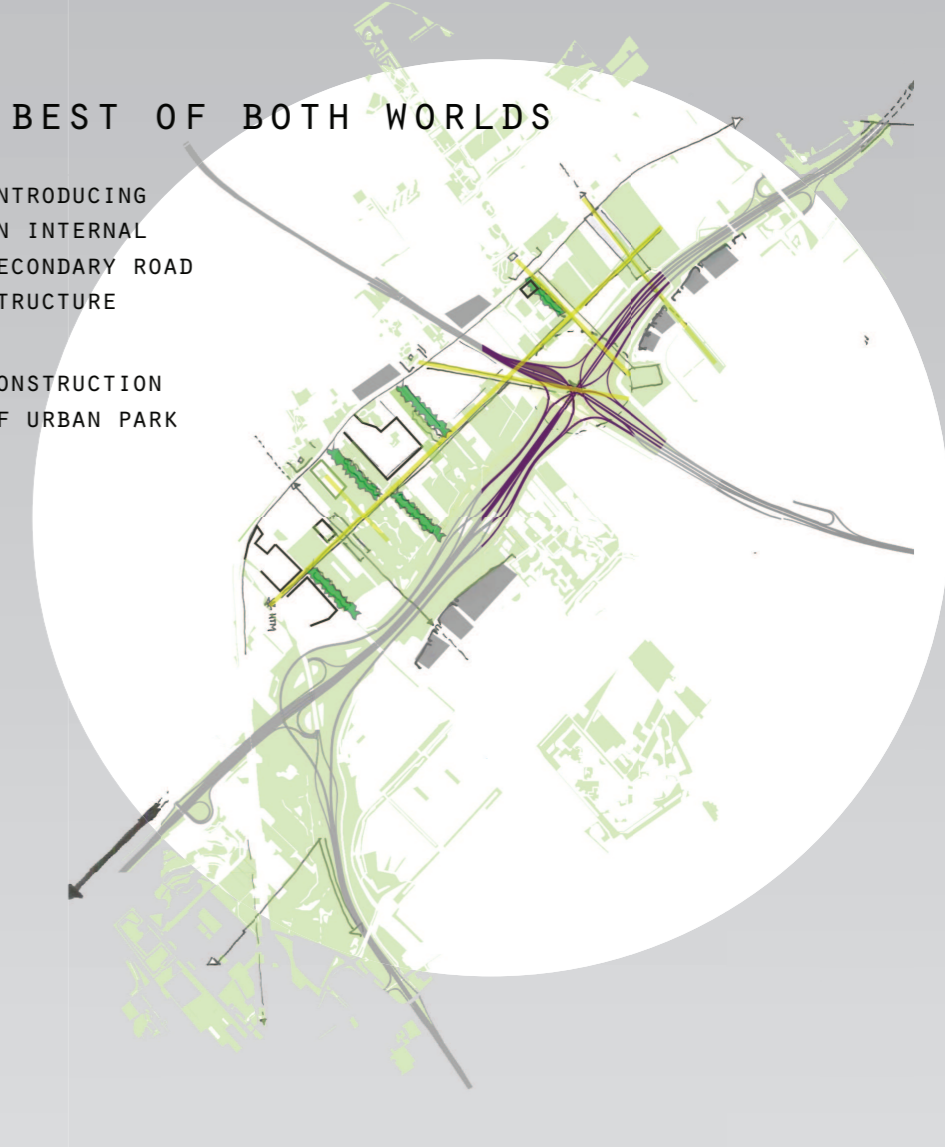
VLIETSCAPE

MAXIMIZING THE ISOLATION OF THE ZONE
REINTRODUCING WATER TRANSPORT
DISCONNECTED FROM THE HIGHWAY



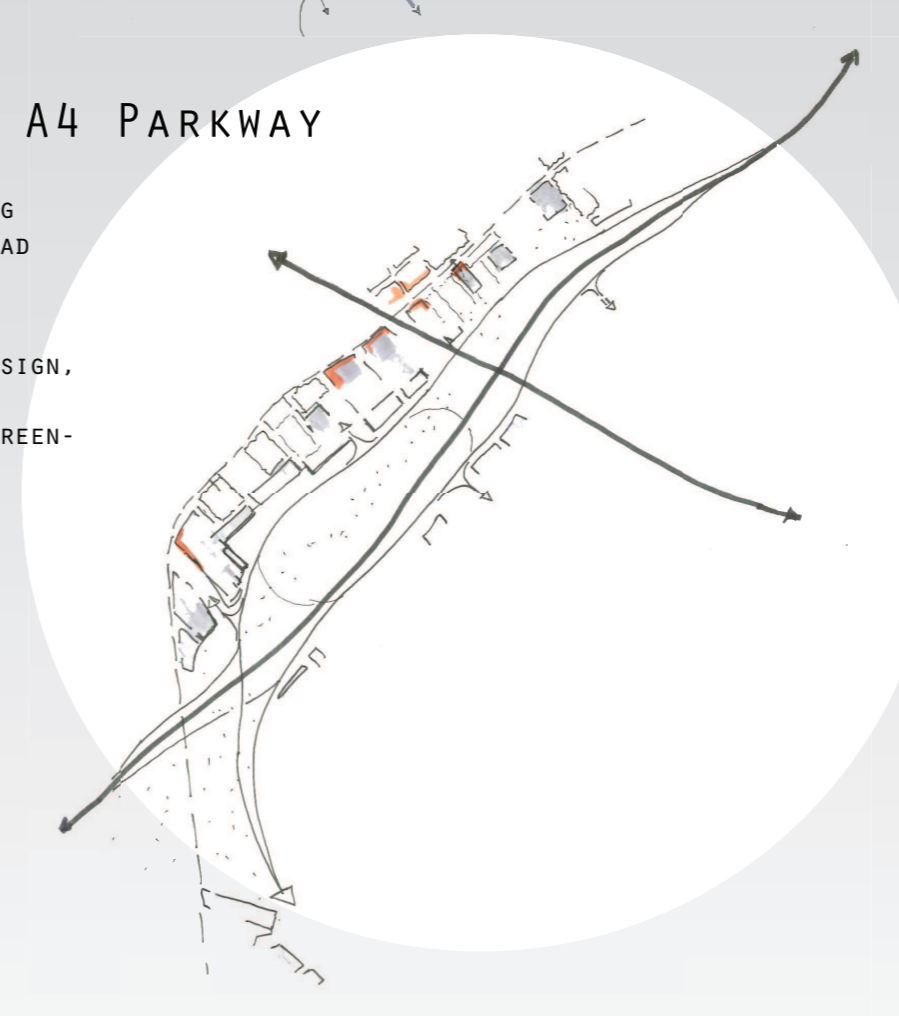
BEST OF BOTH WORLDS

INTRODUCING AN INTERNAL SECONDARY ROAD STRUCTURE
CONSTRUCTION OF URBAN PARK



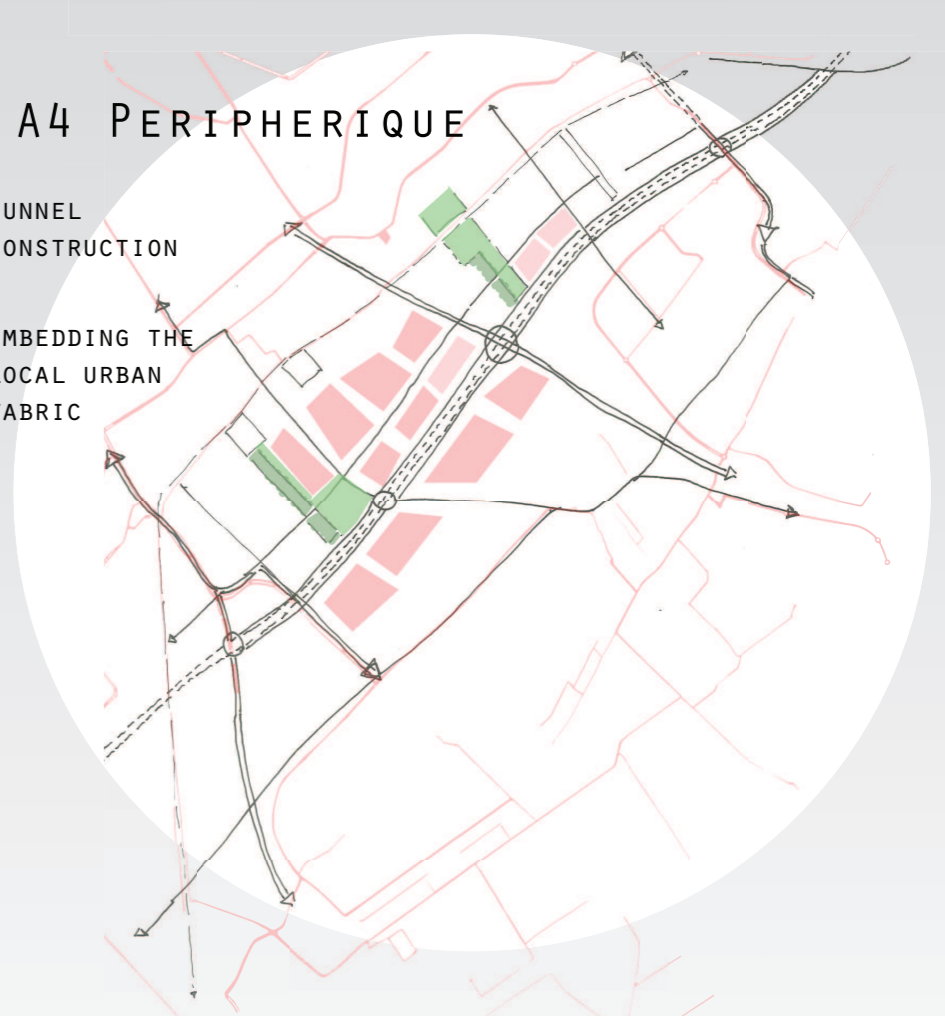
A4 PARKWAY

INTRODUCING PARALLEL ROAD STRUCTURE
PARKWAY DESIGN, CONNECTING REGIONAL GREEN-STRUCTURES



A4 PERIPHERIQUE

TUNNEL CONSTRUCTION
EMBEDDING THE LOCAL URBAN FABRIC



FINAL PRODUCT:

- AN ELABORATED SET OF MODELS TO DEAL WITH THE DEVELOPMENTS OF THE A4/VLIETZONE, CONTAINING:
- A SCENARIO RELATED VISION
- CRITICAL DESIGN DETAILS

SYNTHESIS:

- REFLECTION ON THE DESIGN PRINCIPLES THAT SUPPORT THE DIFFERENT MODELS.
- RECOMMENDATIONS TOWARDS CONTEMPORARY FRINGE ZONE DEVELOPMENTS.
- TO BE DETERMINED: RECOMMENDATION TOWARDS THE PLANNING ACTIONS FOR THE A4/VLIETZONE.

BIBLIOGRAPHY:
- BOECK, D., 2002. AFTERSPRAK. IN AFTERS-SPRAK: RESEARCH FOR THE CONTEMPORARY CITY. ROTTERDAM, NL.
- HAMERS, D. E.A., 2009. VERSTEDELIJING IN DE STADSRANDZONE. PLANBUREAU VOOR LEEFOEGEVING.
- MOSSOP, E., 2006. LANDSCAPES OF INFRASTRUCTURE. IN C. WALDHEIM, RED. THE LANDSCAPE URBANISM READER. NEW YORK: PRINCETON ARCHITECTURAL PRESS.
- PALMBOOM, F., 2003. POLYCENTRISME EN VERSTEDELIJKT LANDSCHAP IN NEDERLAND. IN TRANSFORMATIES VAN HET VERSTEDELIJKT LANDSCHAP: HET WERK VAN PALMBOOM & VAN DEN BOUT STEDENBOUWKUNDIGEN. SUN.

- PROJECTTEAM A4/VLIETZONE GEMEENTE DEN HAAG, 2010. WERKBOEK A4/VLIETZONE.
- SCHRIJNEN, J. & JONG, T.D., 2005. LAND EN STAD: DE CREATIE VAN EEN OPNAVING. UNIVERSITEIT VAN DELFT.
- SHANNON, K. & SMETS, M., 2010. THE LANDSCAPE OF CONTEMPORARY INFRASTRUCTURE. NAI PUBLISHERS.
- SIEVERTS, T., 2003. CITIES WITHOUT CITIES: AN INTERPRETATION OF THE ZWISCHENSTADT. NEW YORK: ROUTLEDGE.
- TUMMERS, L.J.M. & TUMMERS-ZUURMOND, J.M., 1997. HET LAND IN DE STAD: DE STEDEROUW VAN DE GROTE AGGLOMERATIE. THOTH.