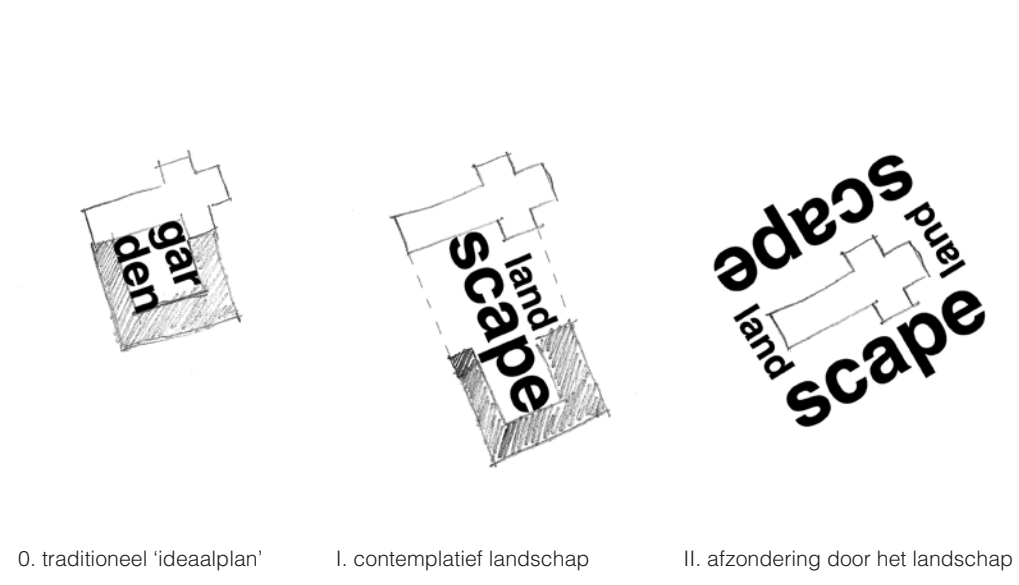
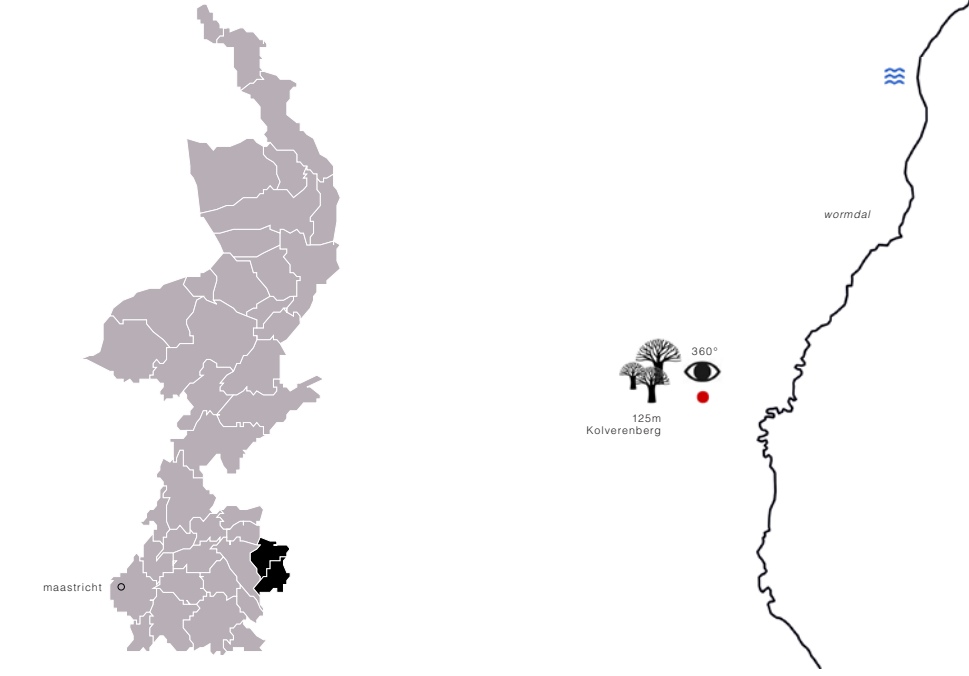
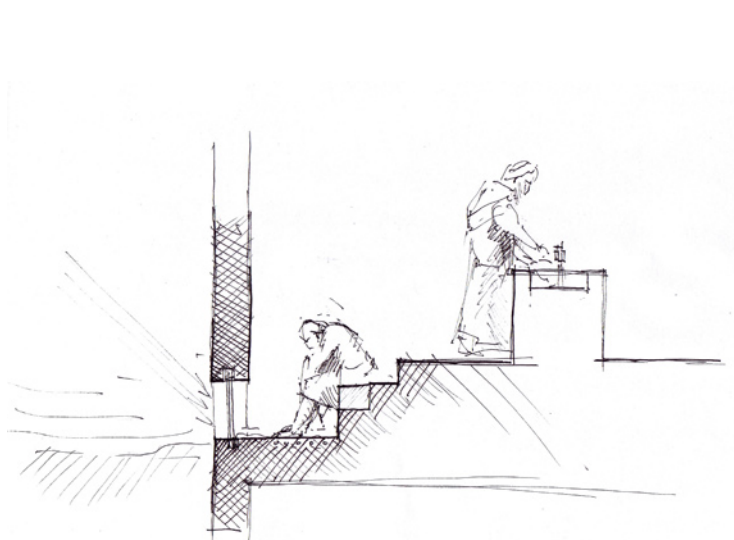
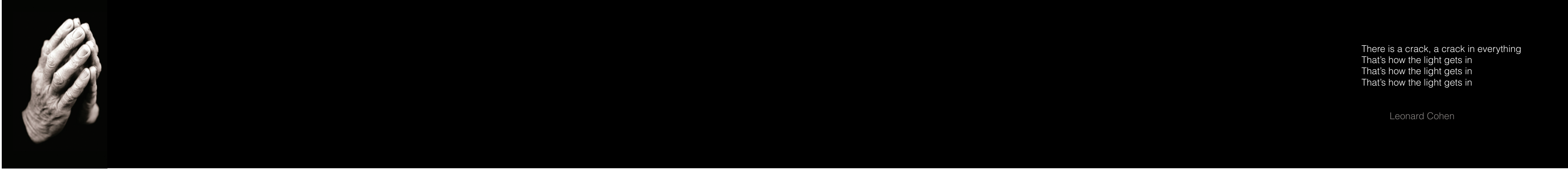
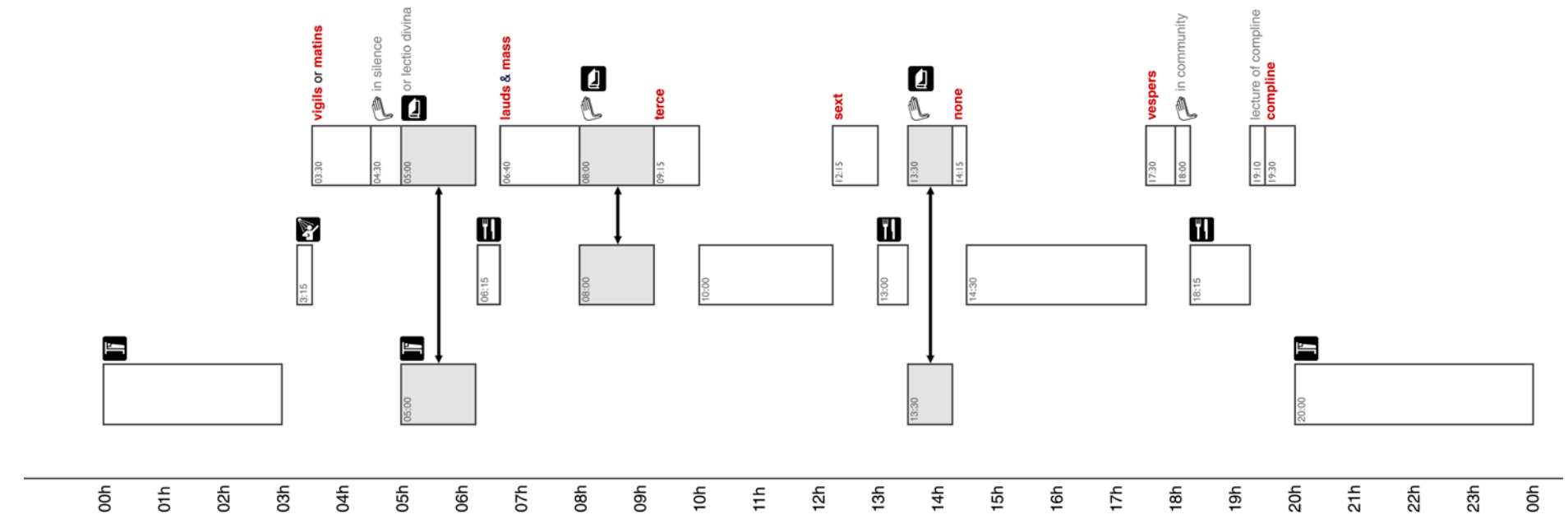


een cisterciënzer klooster



bidden
↓
rusten
↓
werken

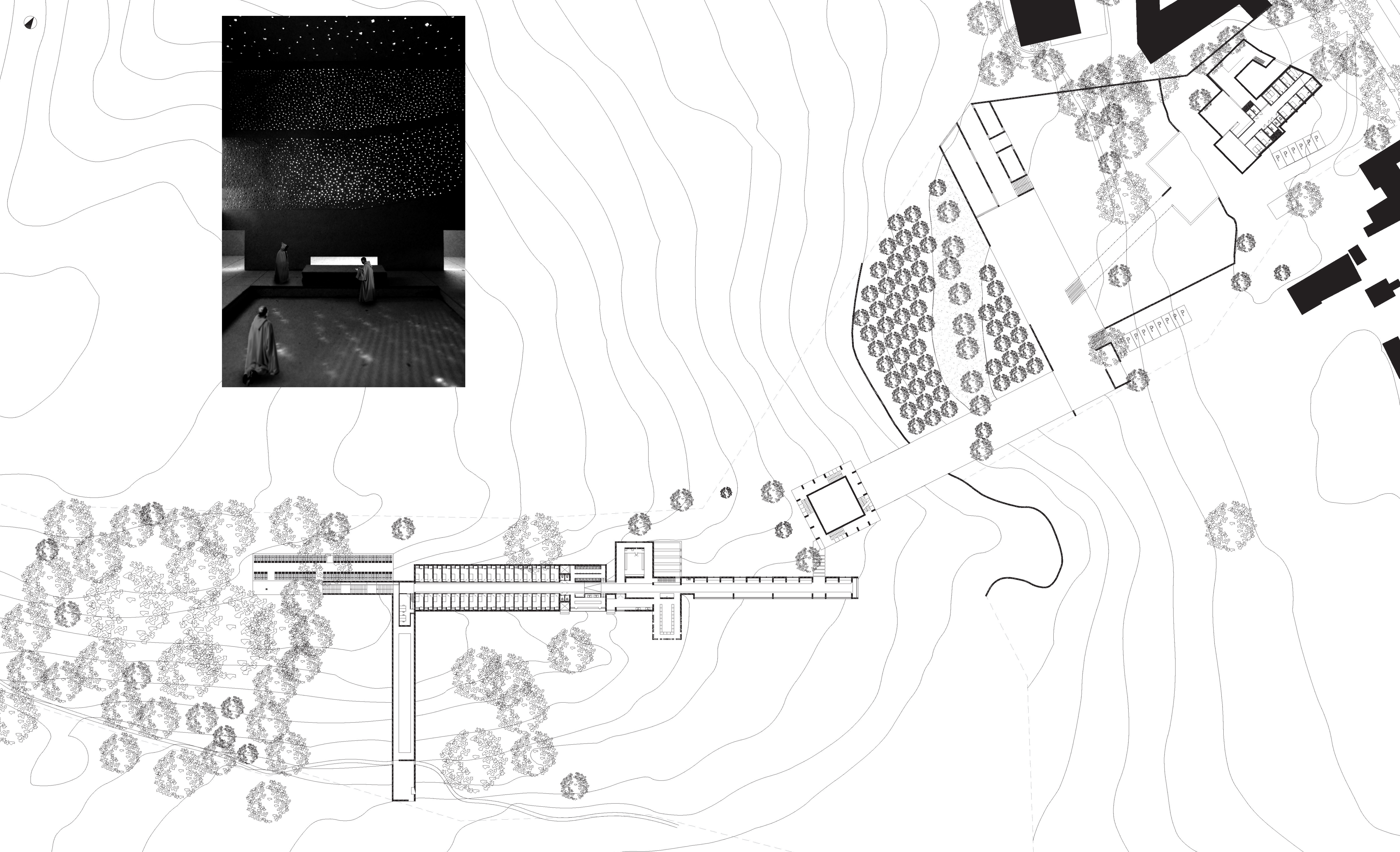
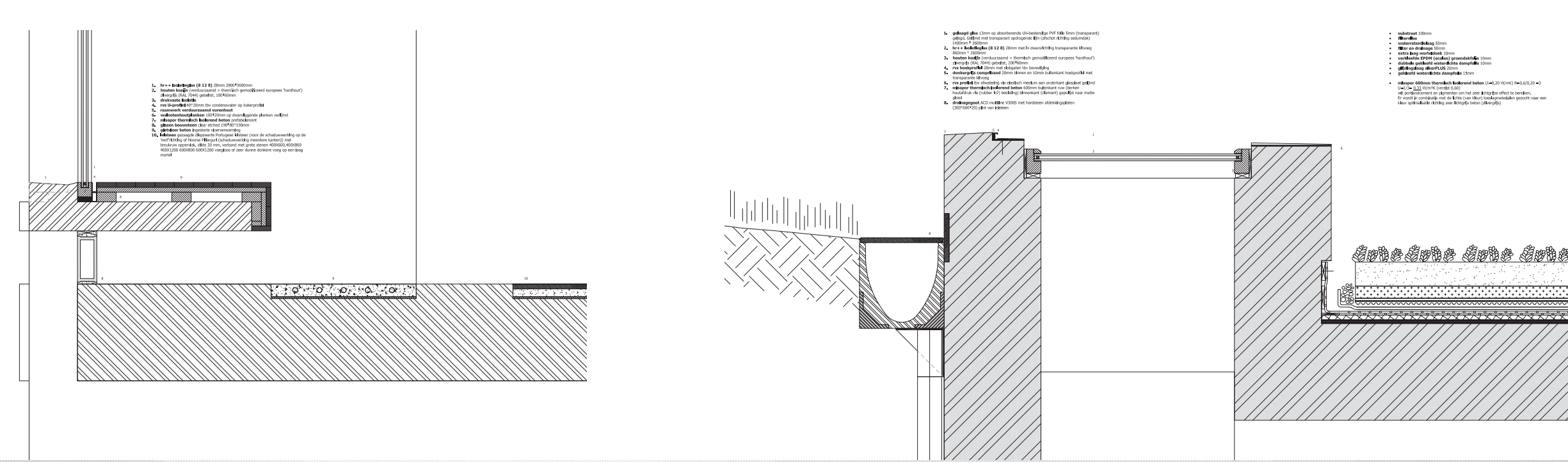
richten op god
↓
concentratie
↓
autonomië/afzondering



The Sublime Light and the Heterotopia
An architectural perspective, on the relation between the Sublime and the Heterotopia and the role light plays therein. Eventually the notion of the *l'etopos* arises: a place connected and elevated to 'the other place' by light. The *l'etopos* is used as 'theoretical inspiration' for the design of my graduation project: a monastery for the Cistercian Order.

The Sublime and the Heterotopia
The sublime as a philosophical notion is related to the heterotopias introduced by Foucault. Society is in need of such 'other places' as these places provide an unlimited space for the sublime within their borders

The Sublime Light
The sublime light and the meaning that it gives to the architectural space capturing it is analysed for three different buildings: the Pantheon, Corbusier's *St Pierre de Firminy-Vert* and the Church of Light by Tadao Ando. The sublime light that can connect 'place to other place' emerges as a characteristic of the architectural expression of this special type of heterotopia: the *l'etopos*.



Robert Wierenga

ir. R. J. Nottrot, ir. J.F. Engels, dr. ir. M.J. van Dorst

Architectuur Explore Lab

