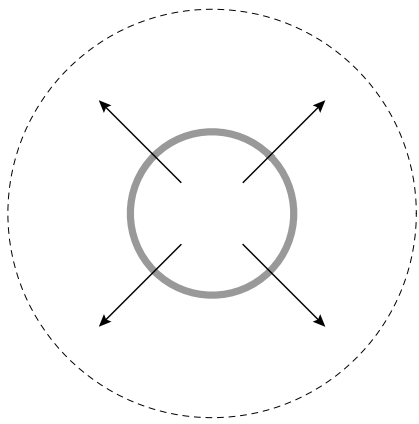


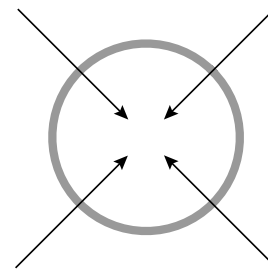
Flexible buildings in the compact city of Amsterdam

The Appeltjesmarkt



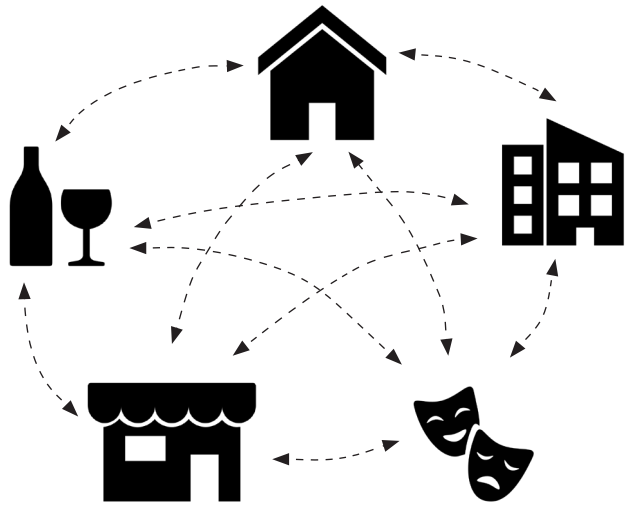


expansion



densification

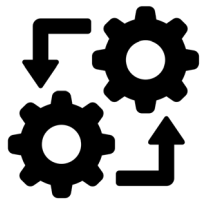
What should the architectural design of buildings comply with in order to fit in the urban fabric of the compact city?



CIAM movement



compact city



support base services



energy

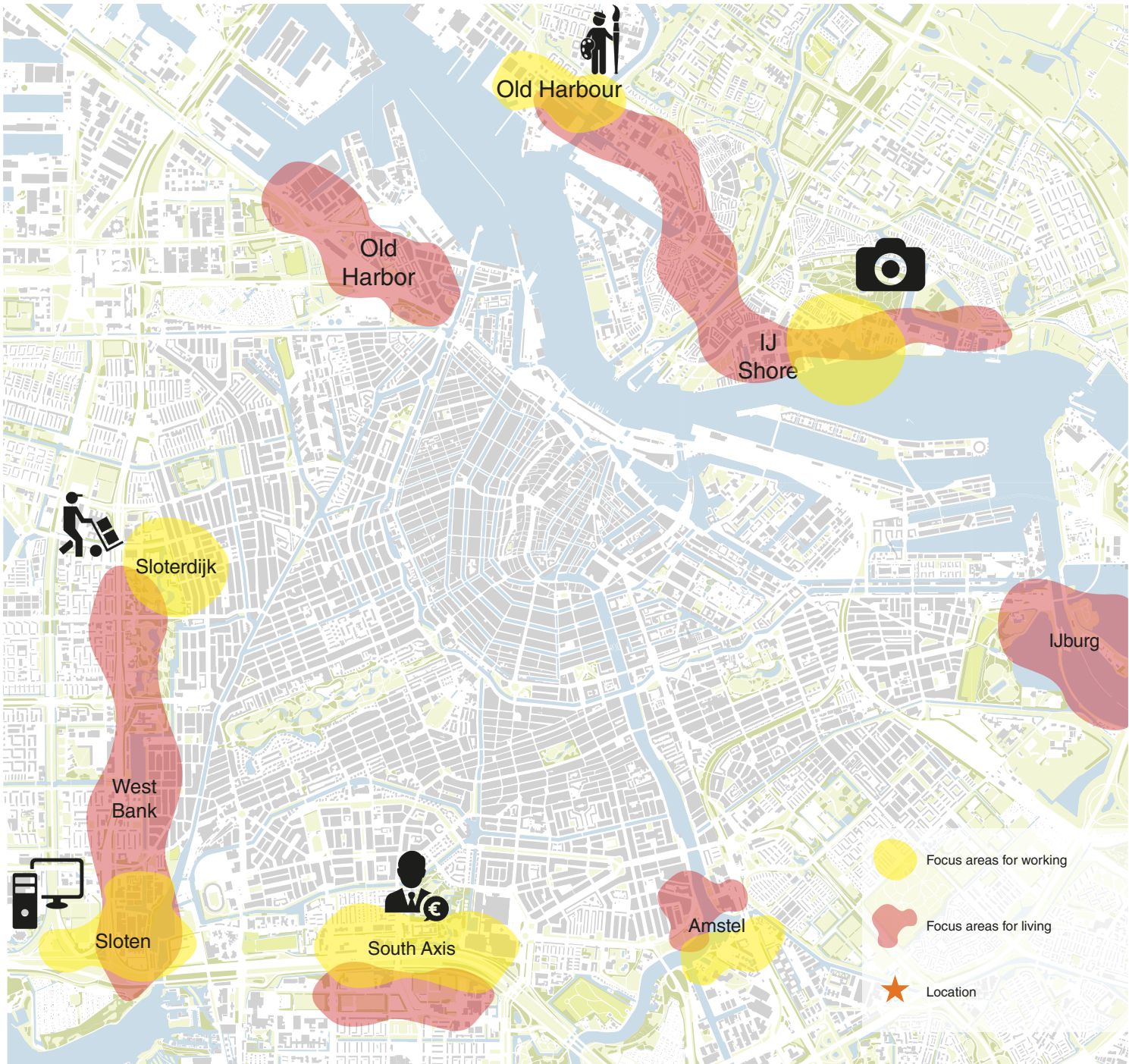


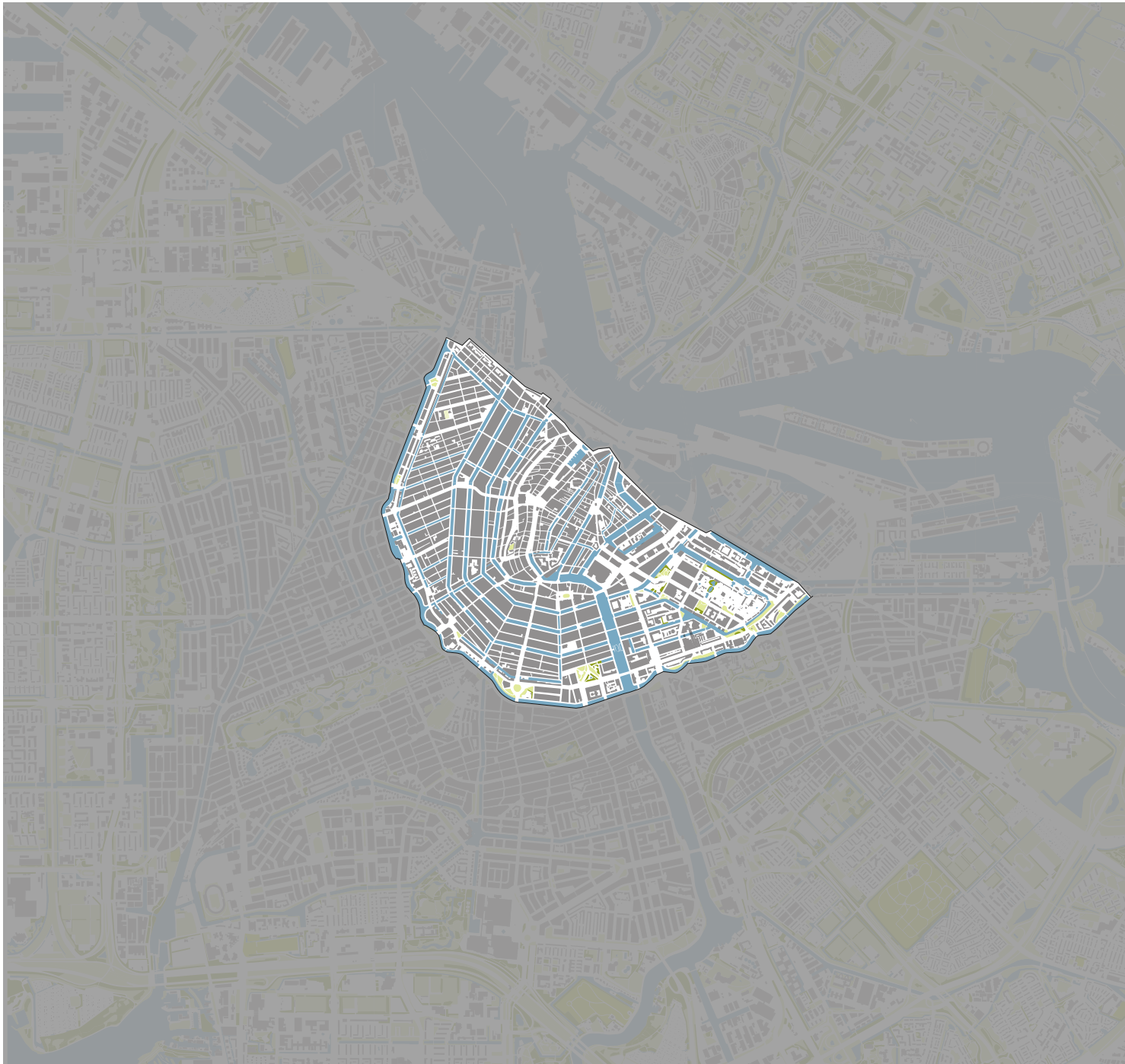
transport



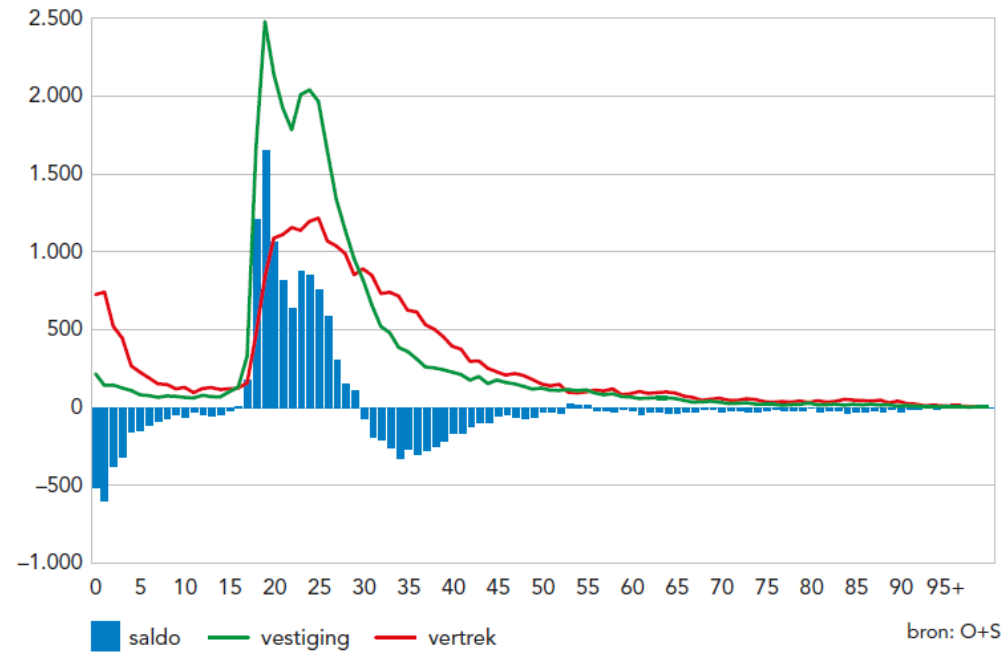
landscape

Amsterdam



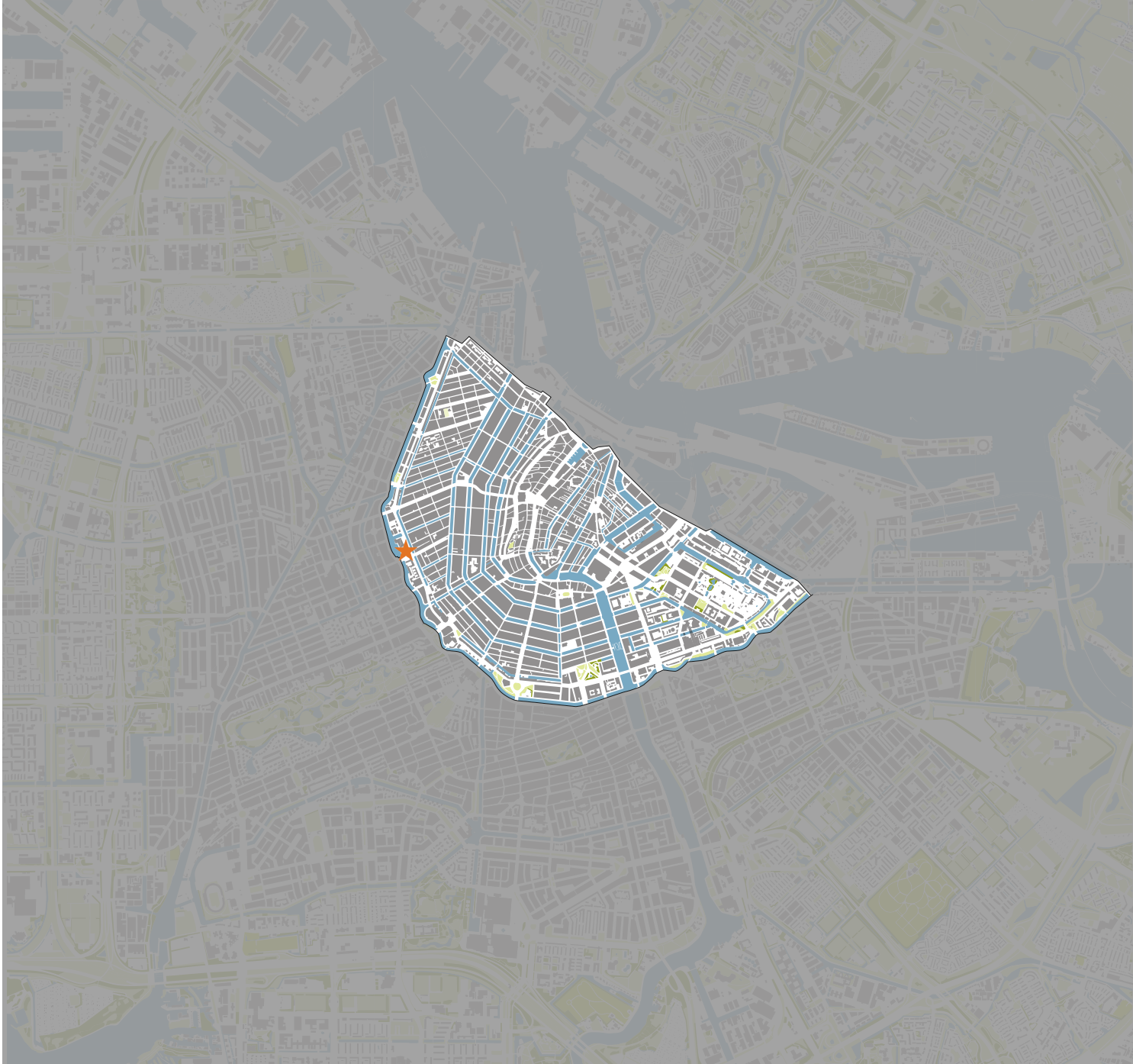


Afb. 2.4 Binnenlandse migratie van Amsterdam naar leeftijd, 2011



young professionals







site



site



site

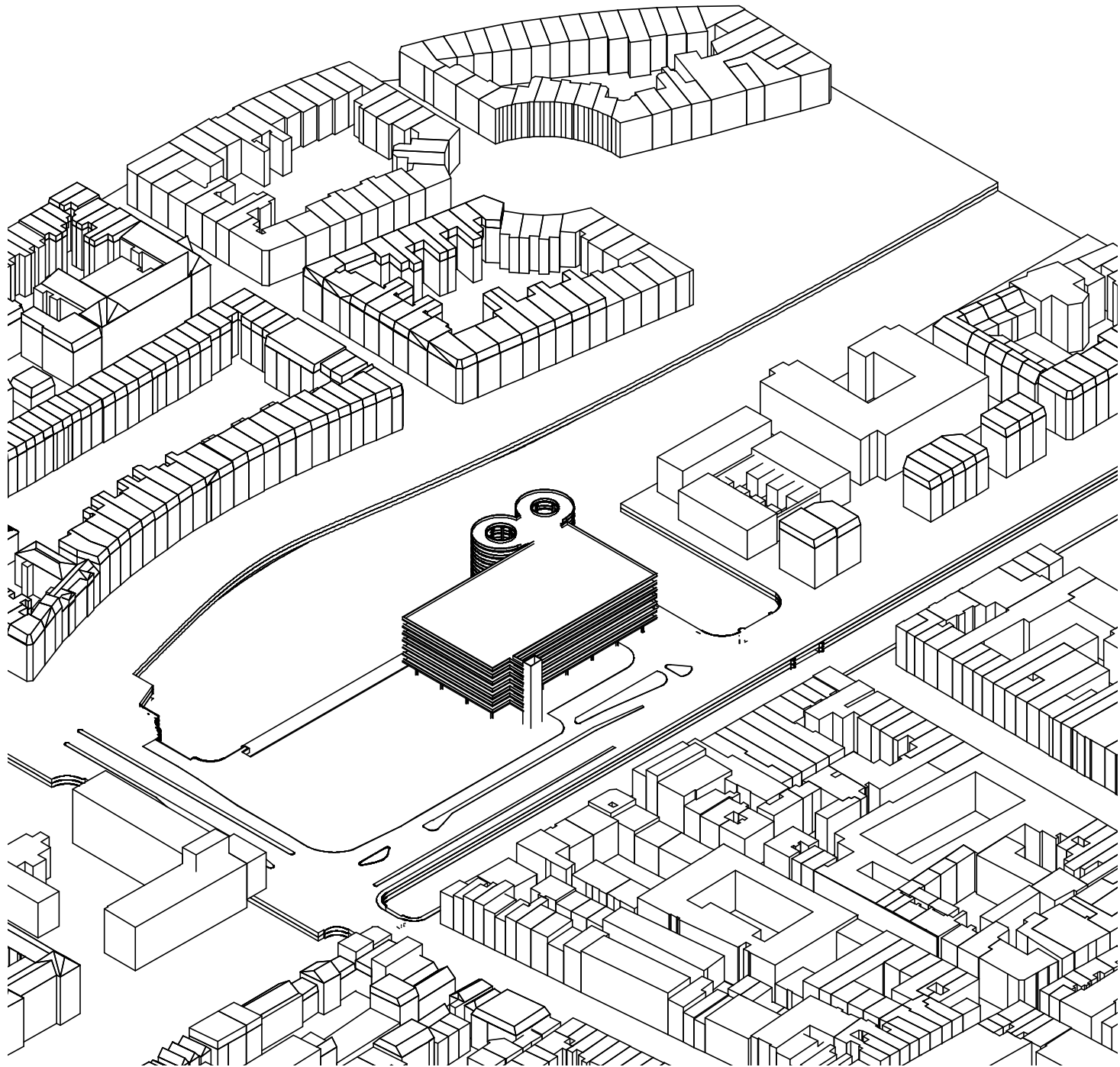


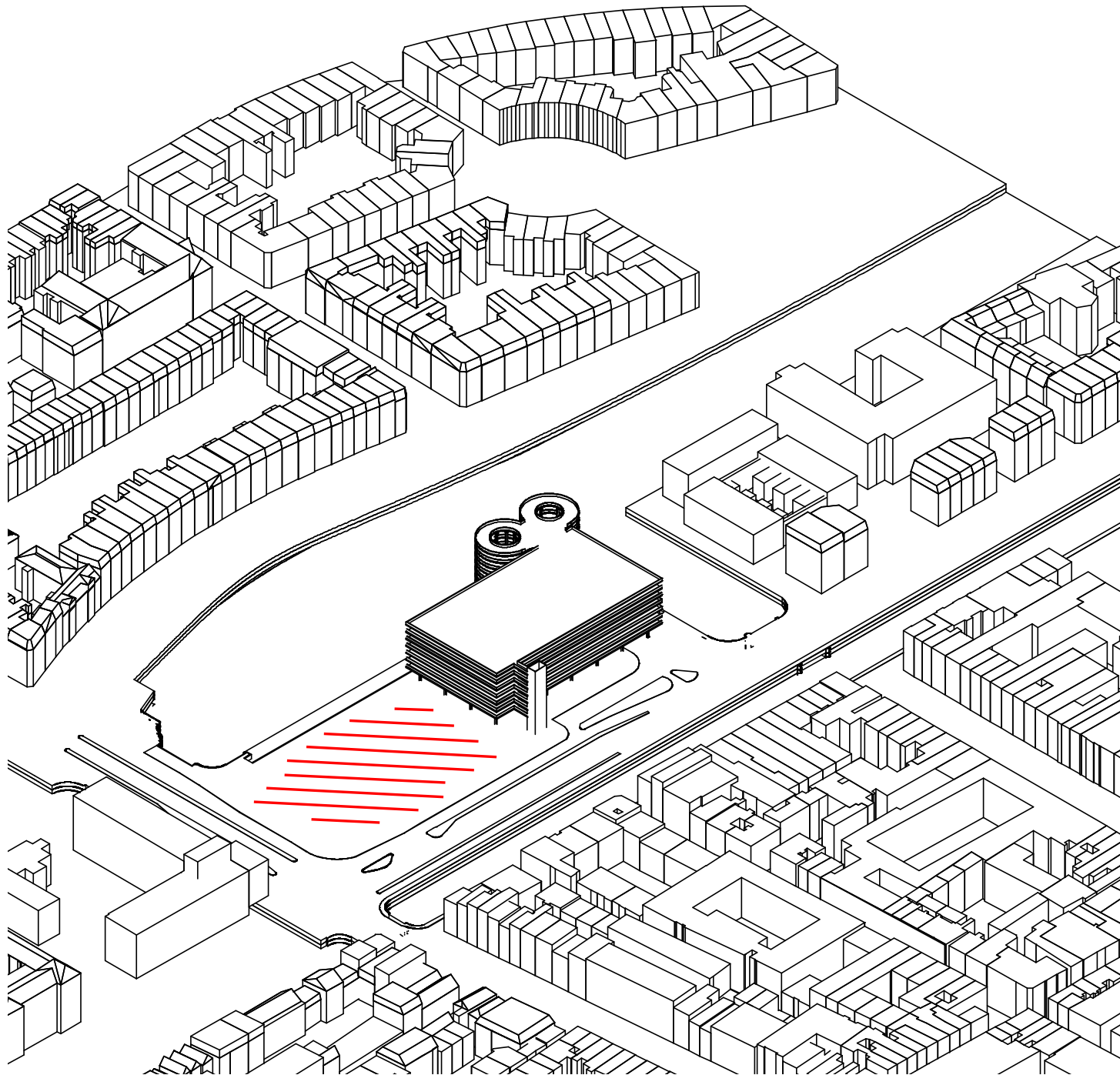
site

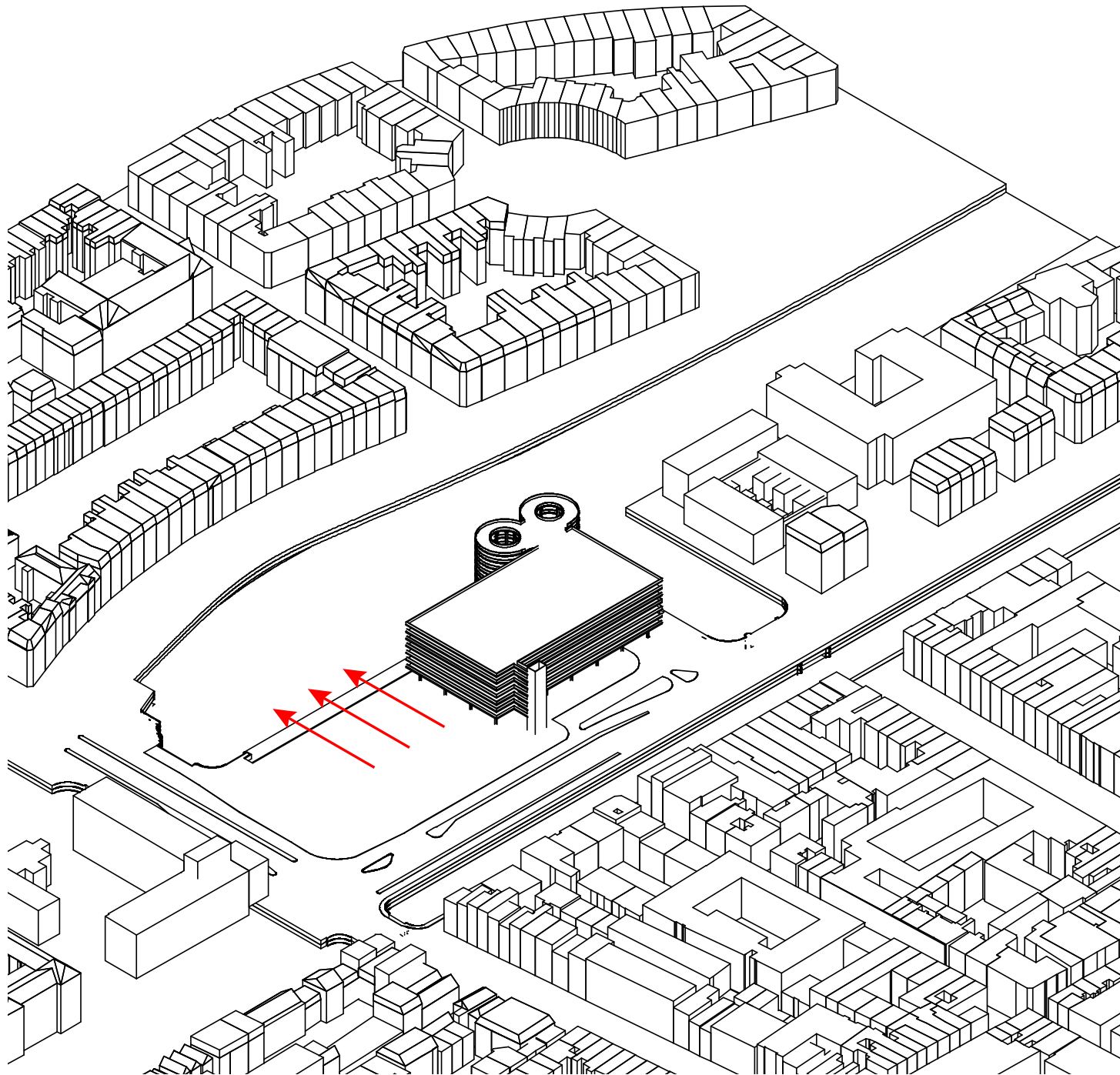


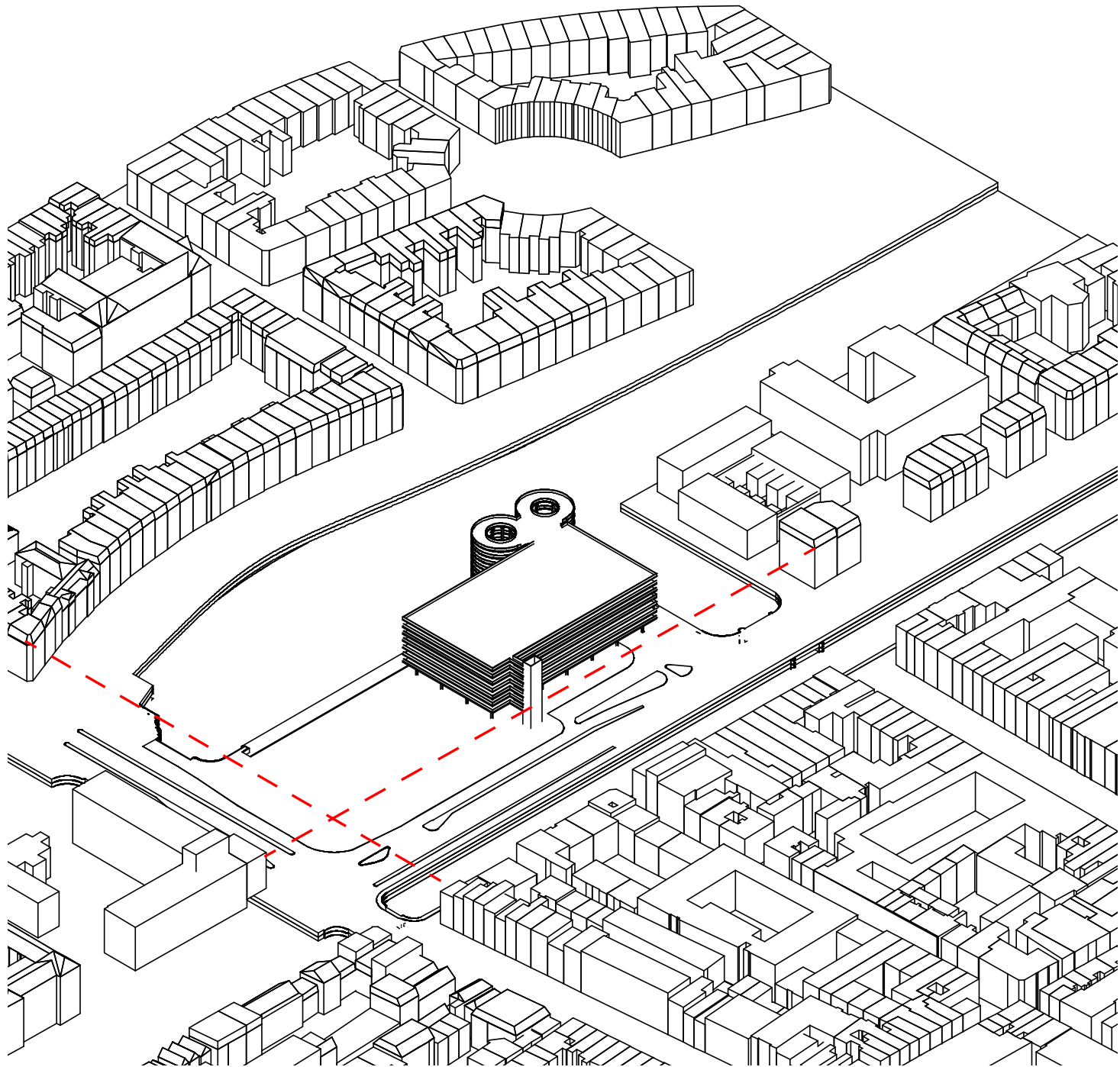
Design for young professionals (a) flexible building(s) with the accompanying public space in which working and living are combined

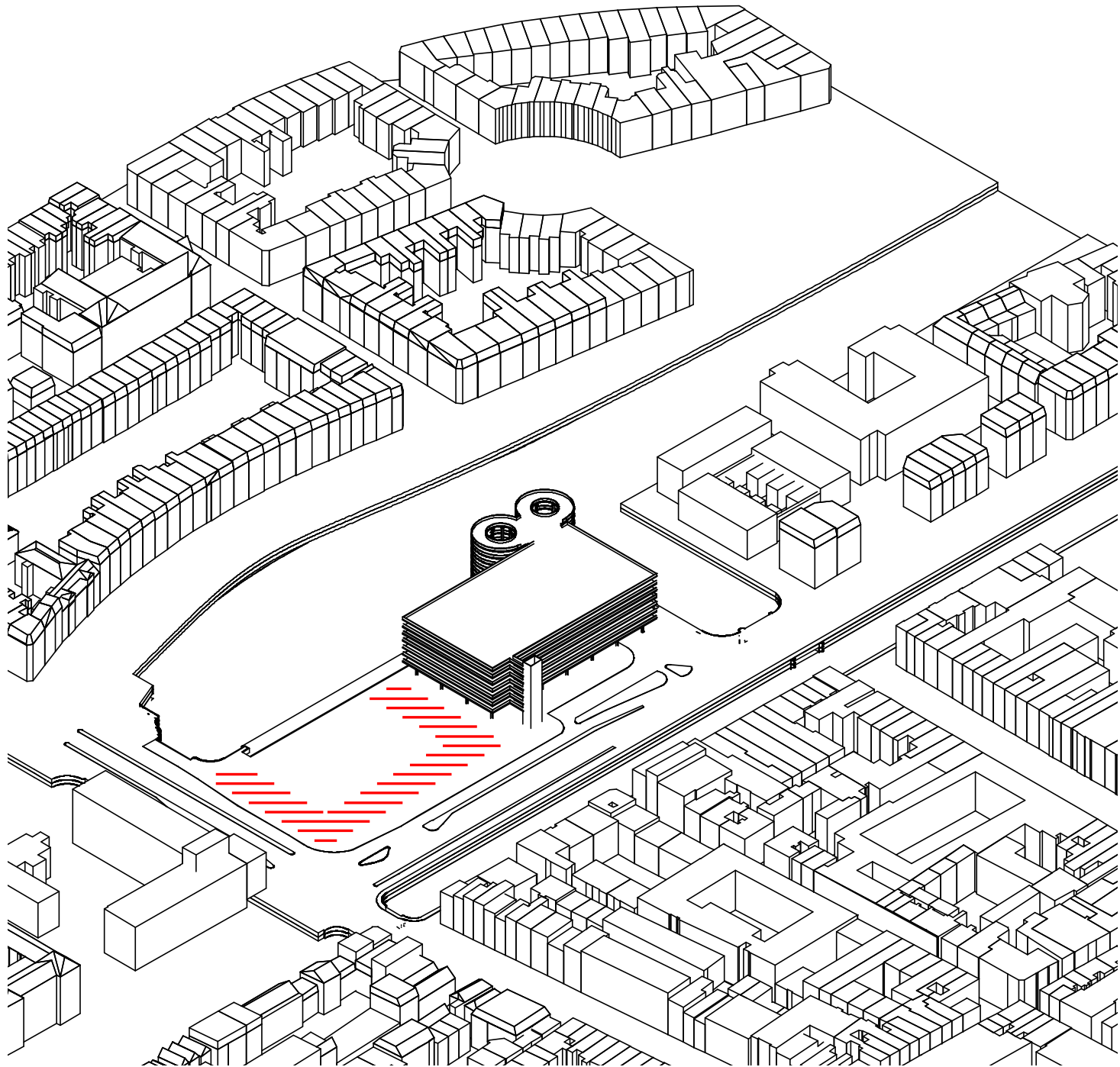
design

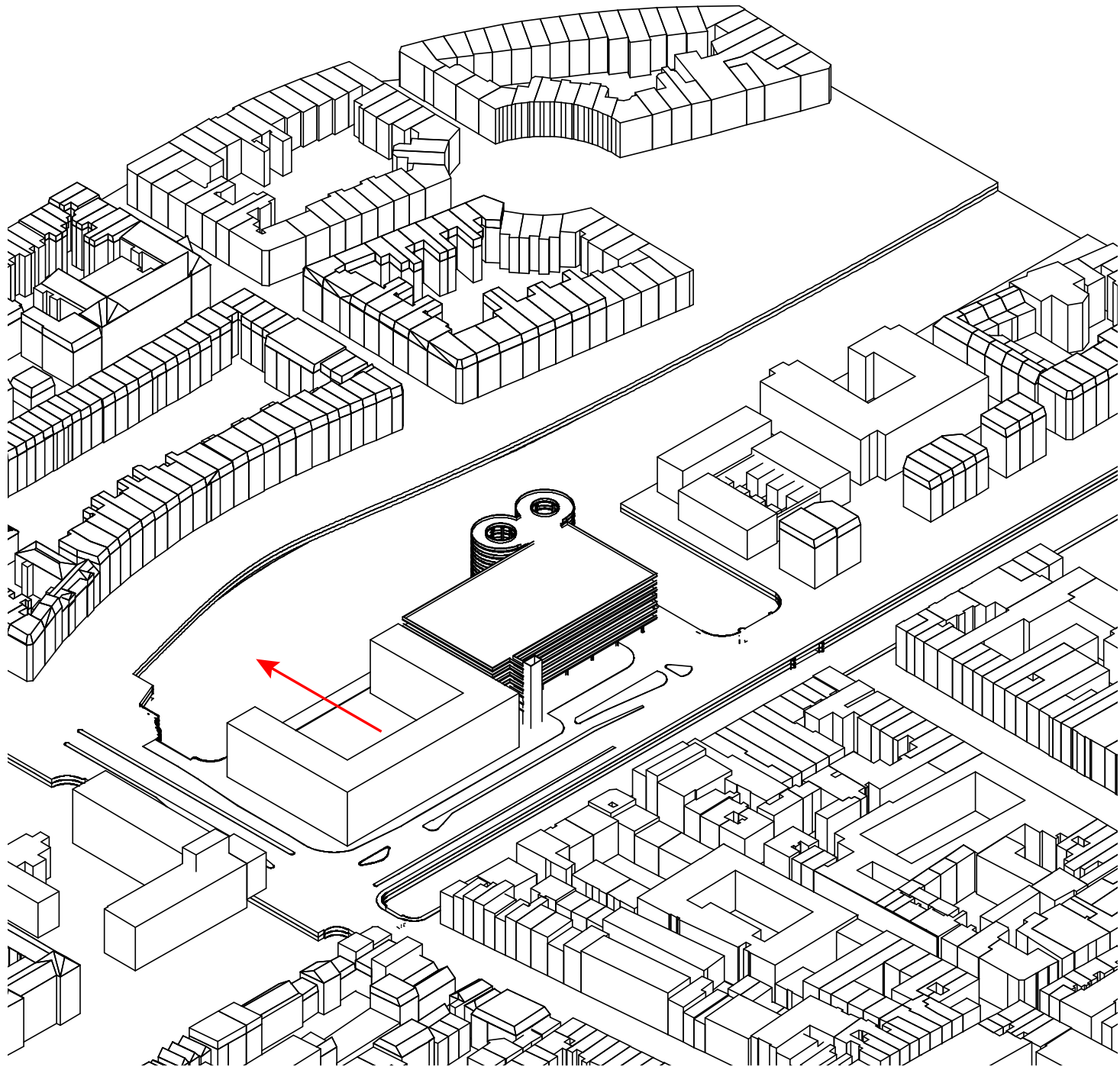


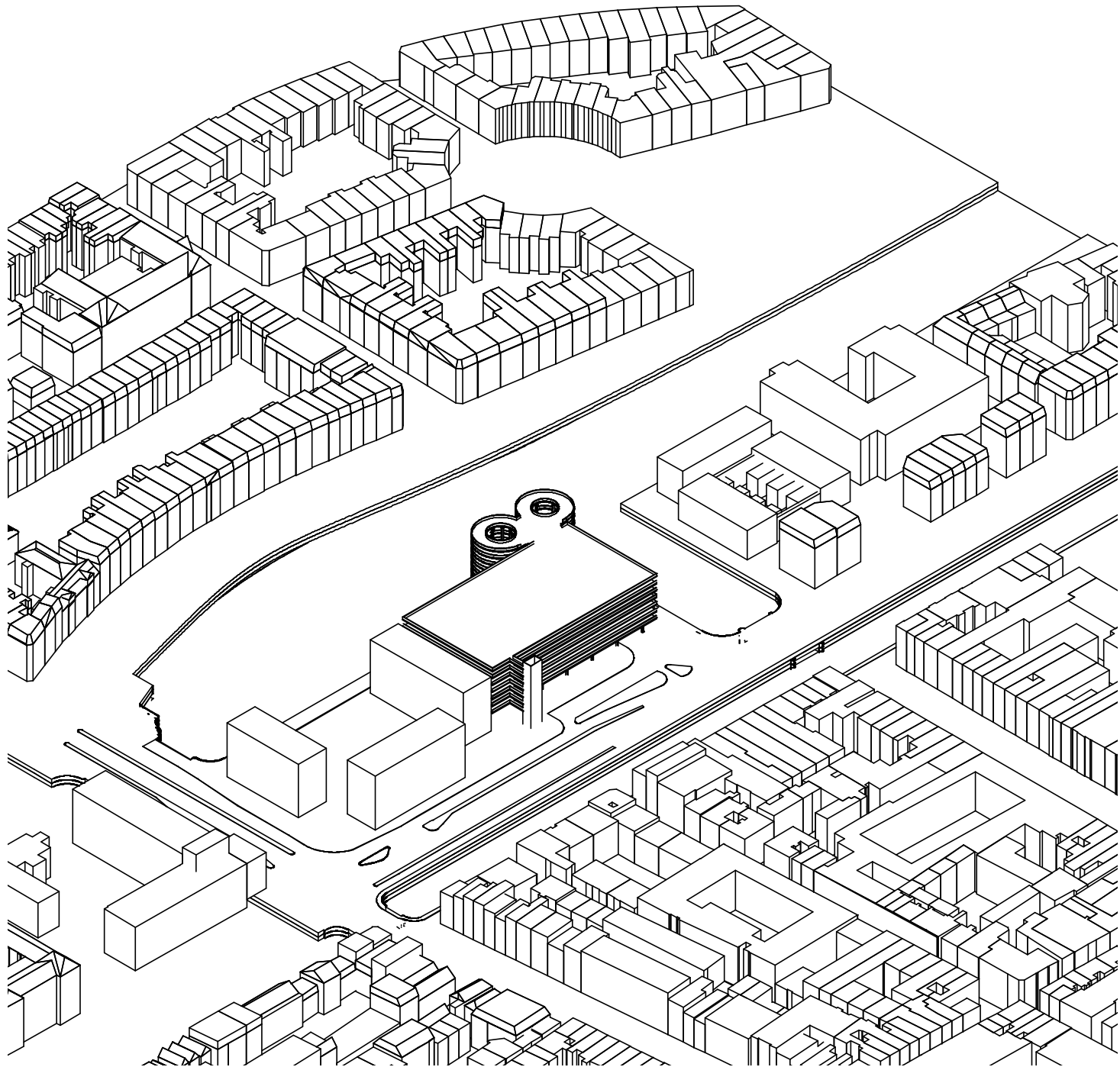


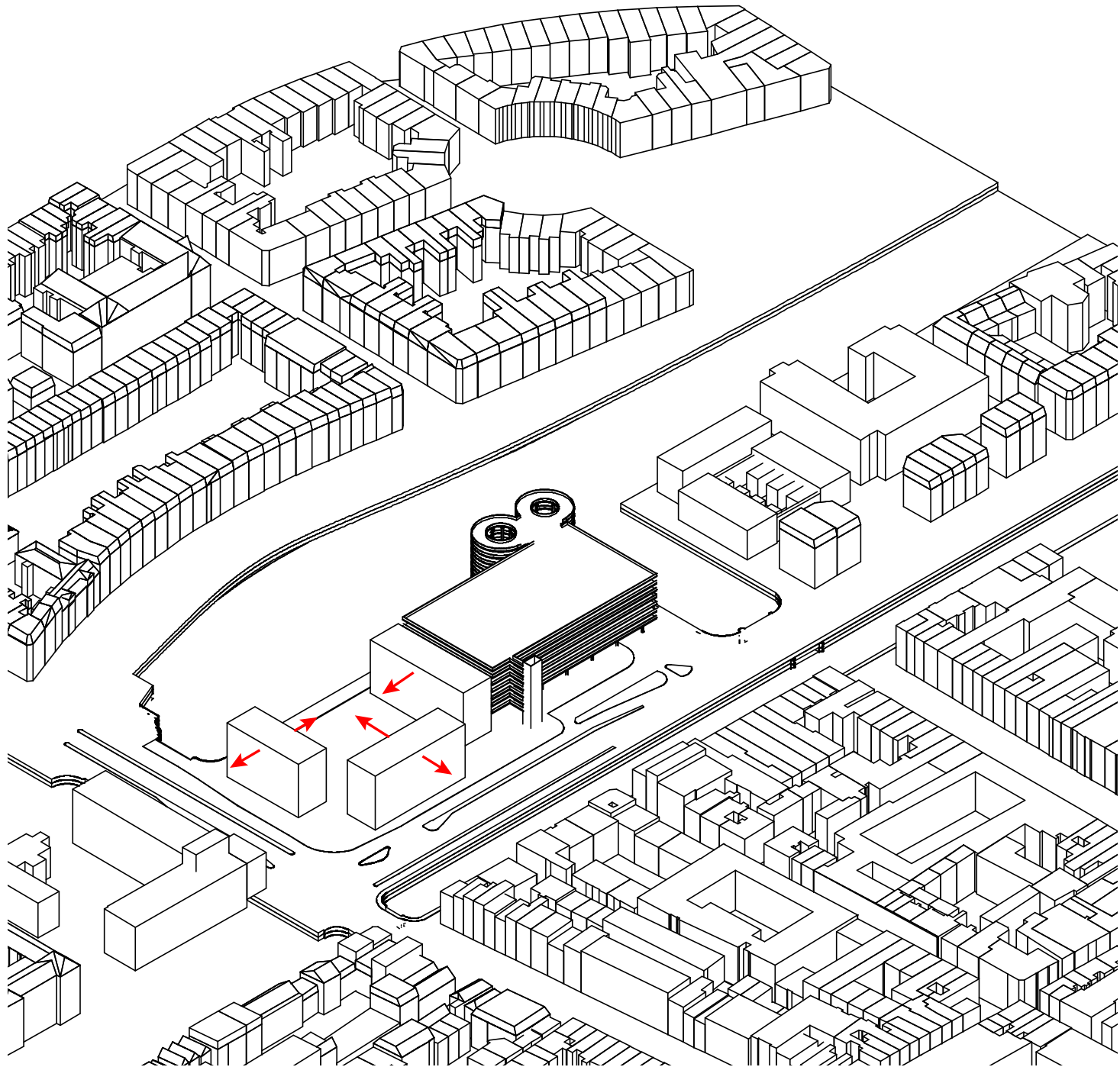


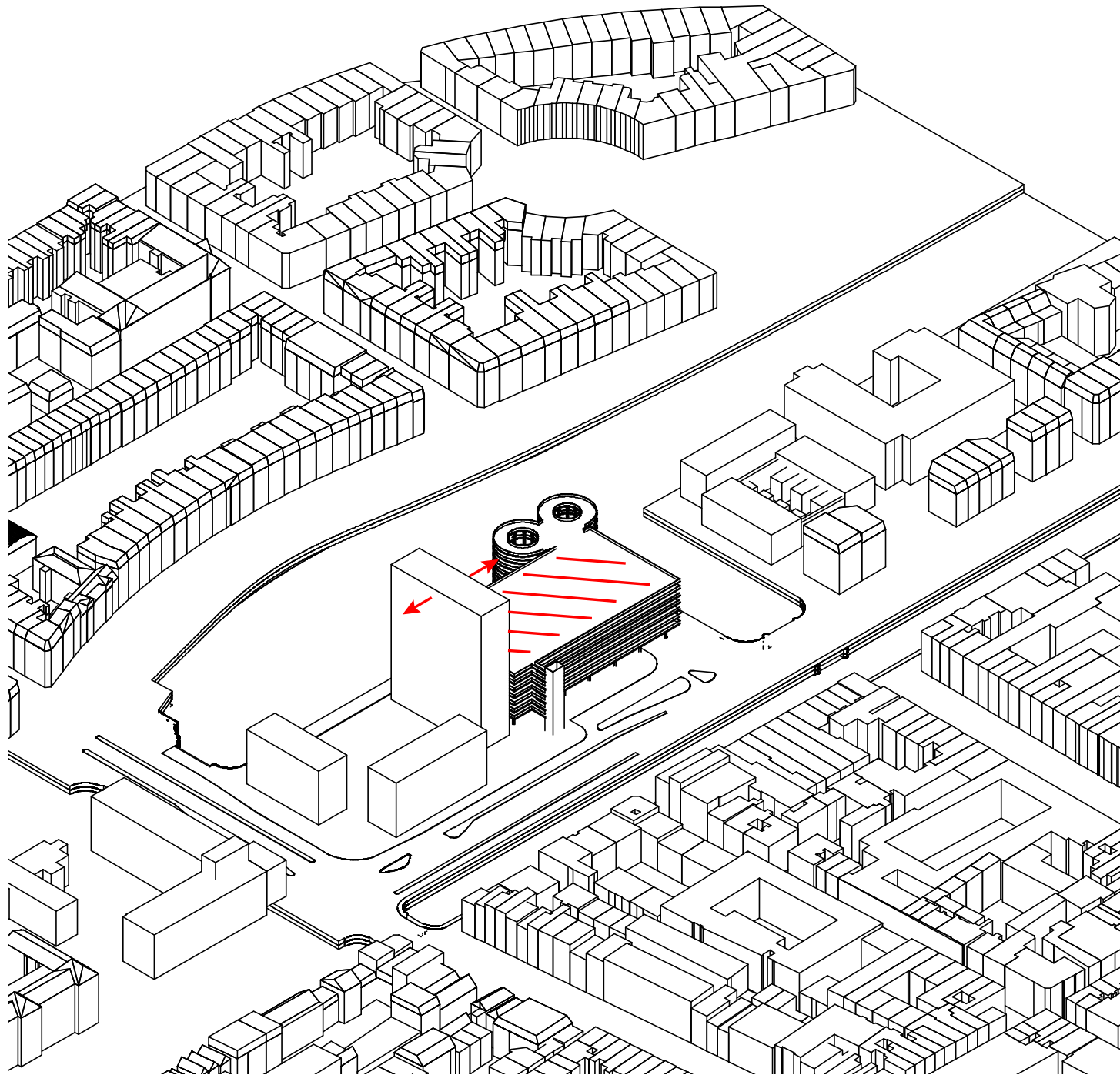


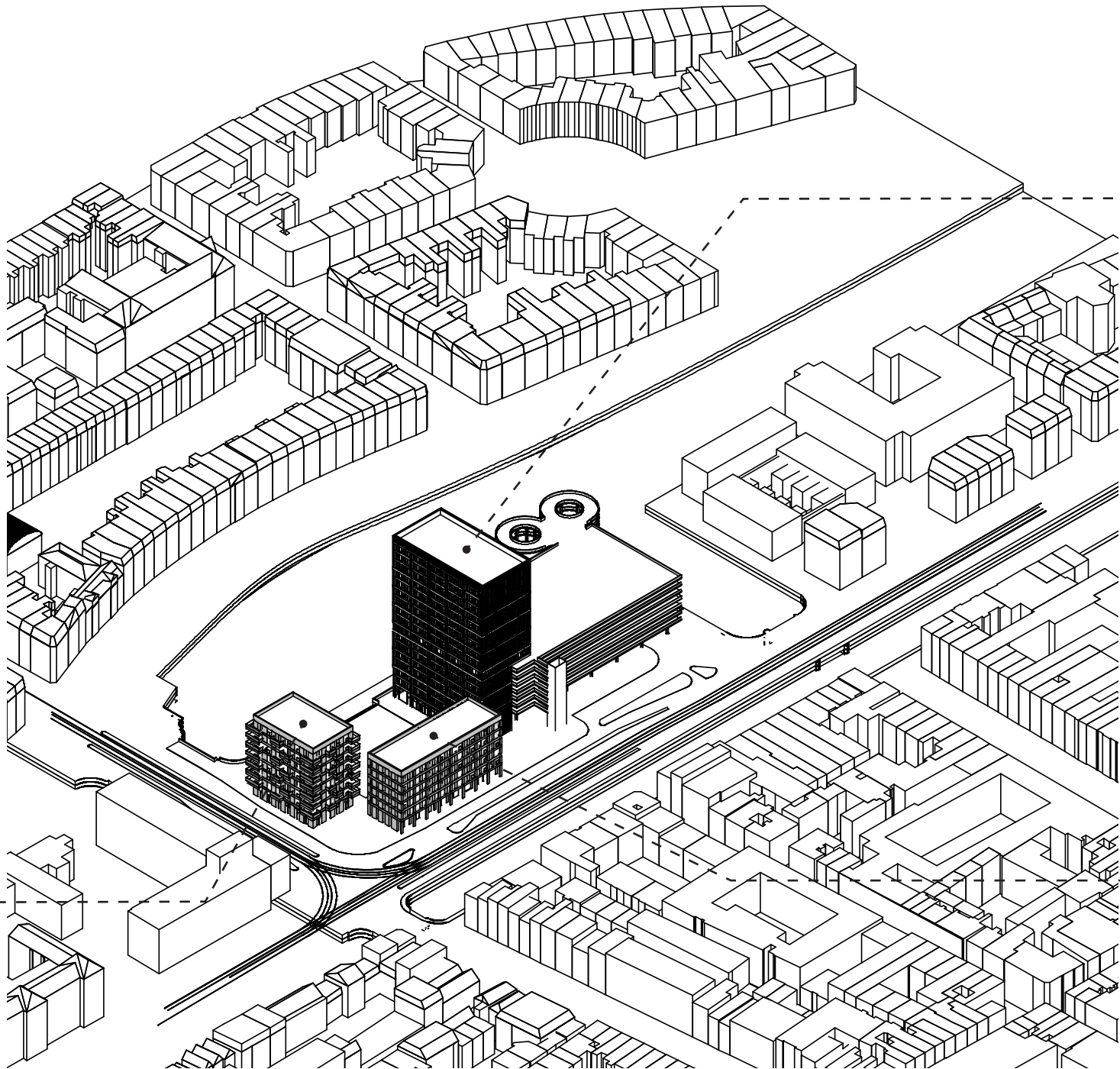








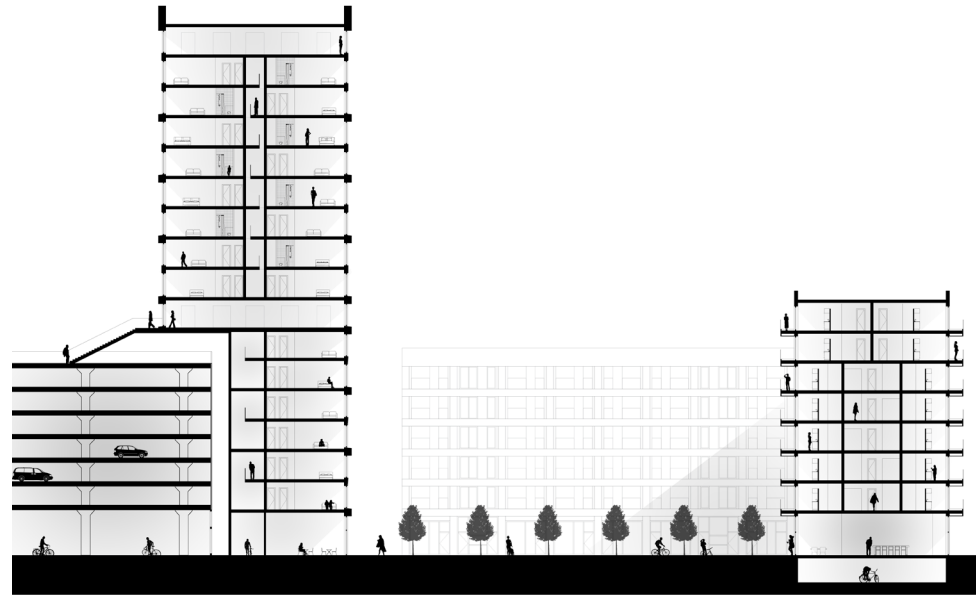


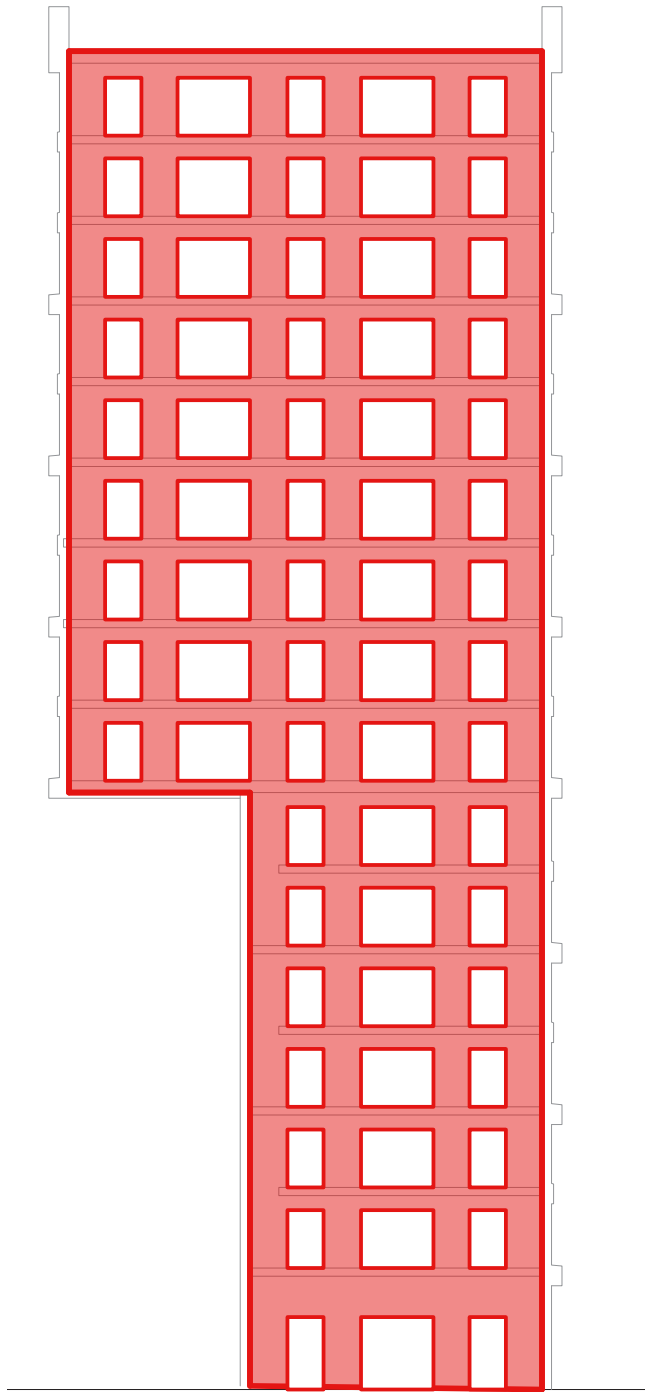


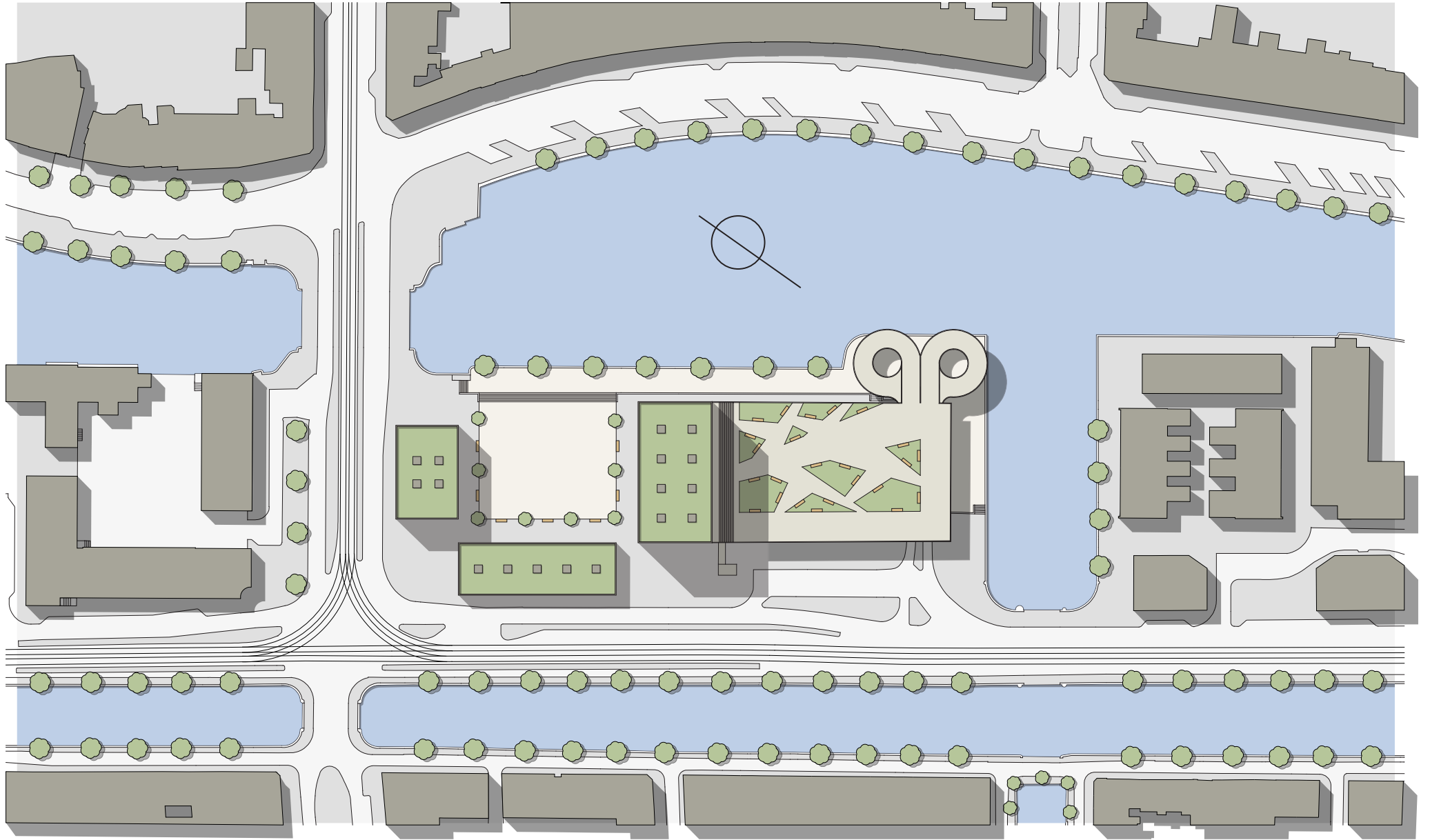
tower

urban block

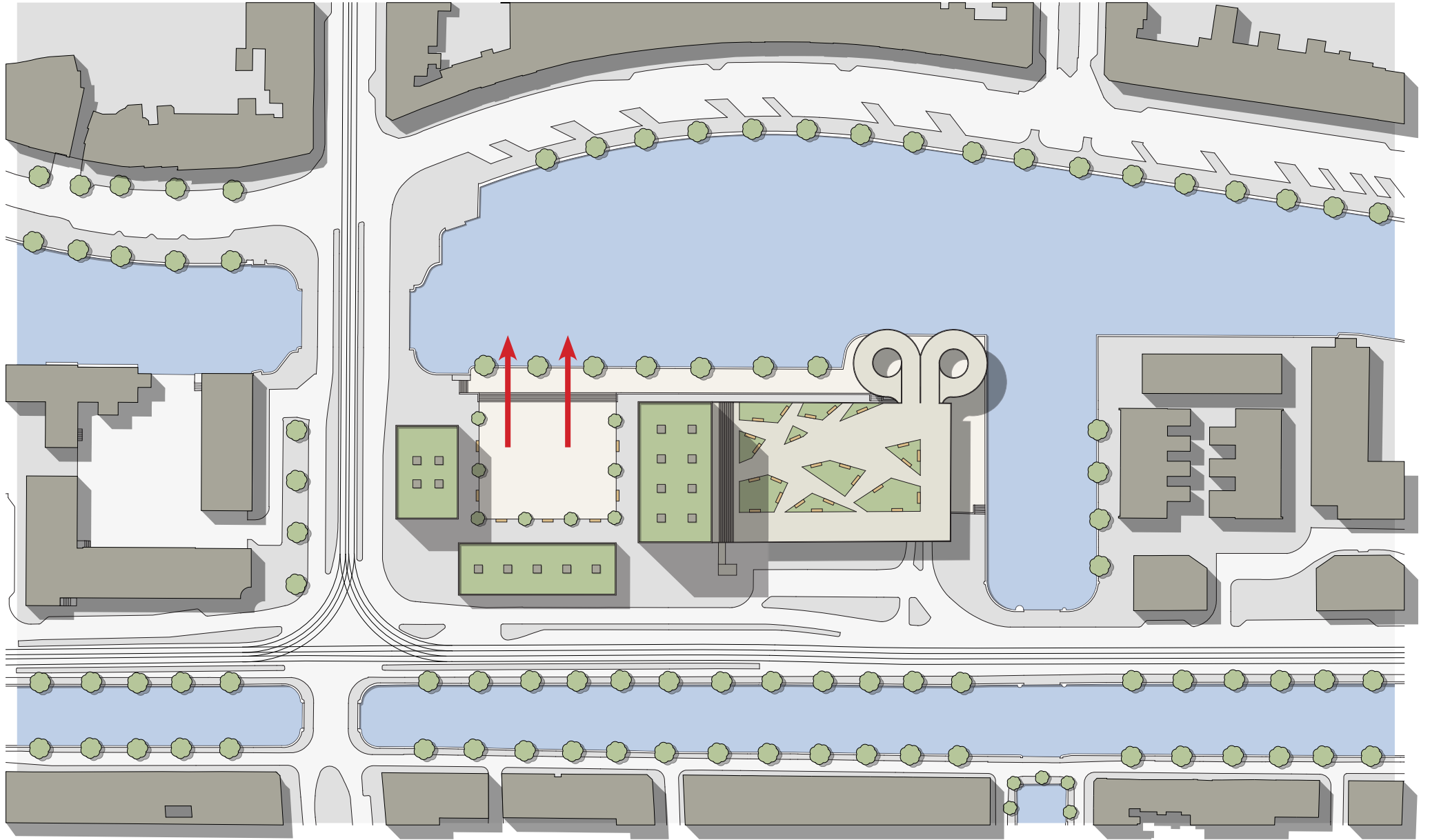
urban row



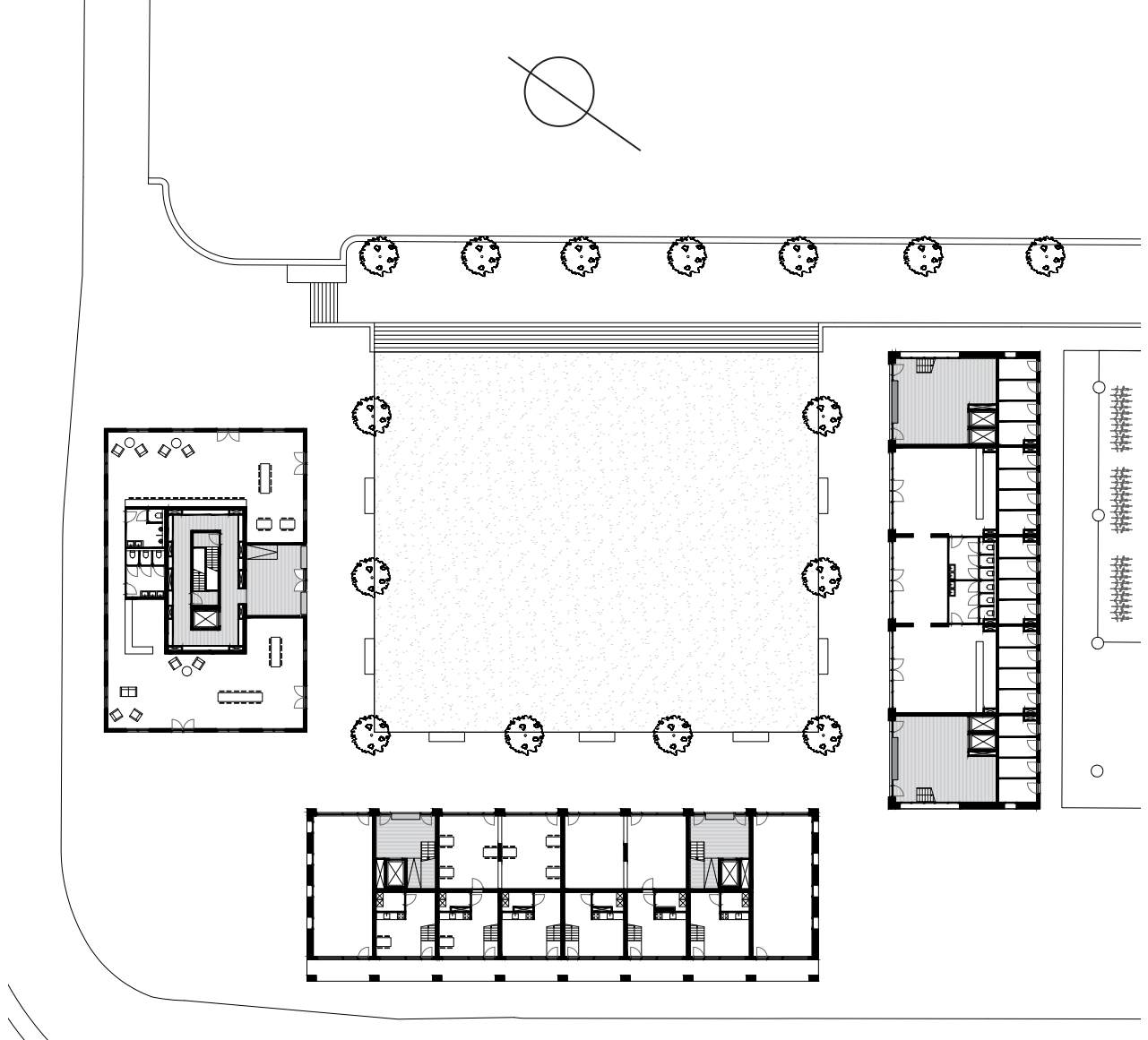


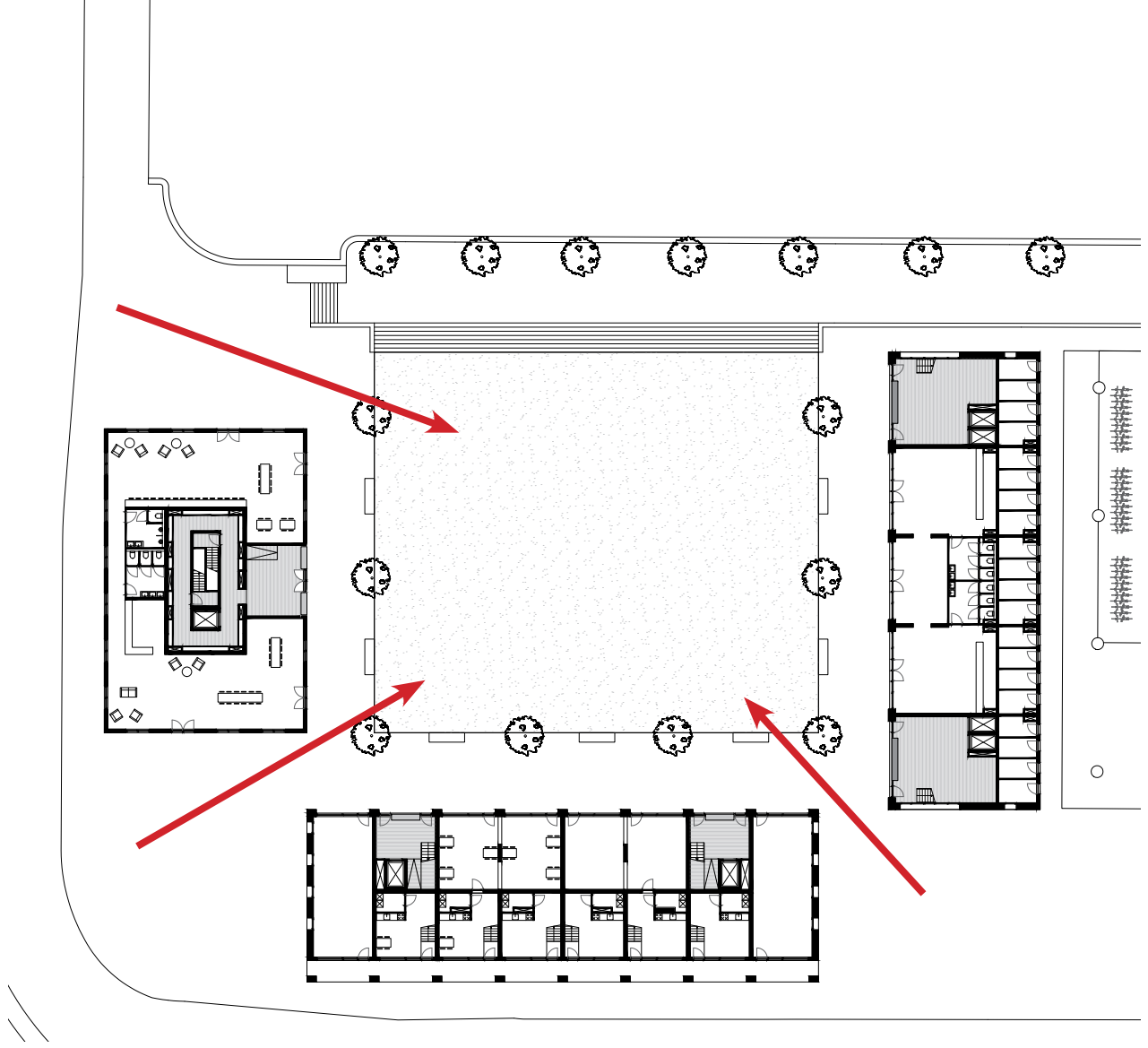














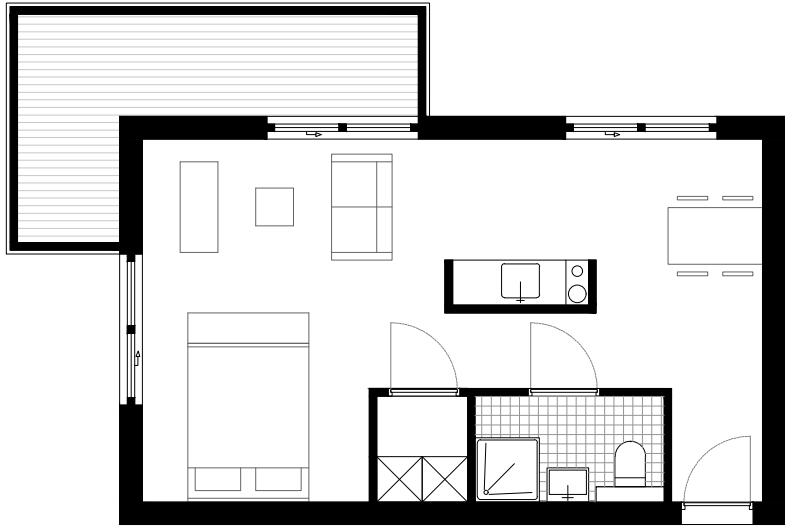


dwelling floorplans

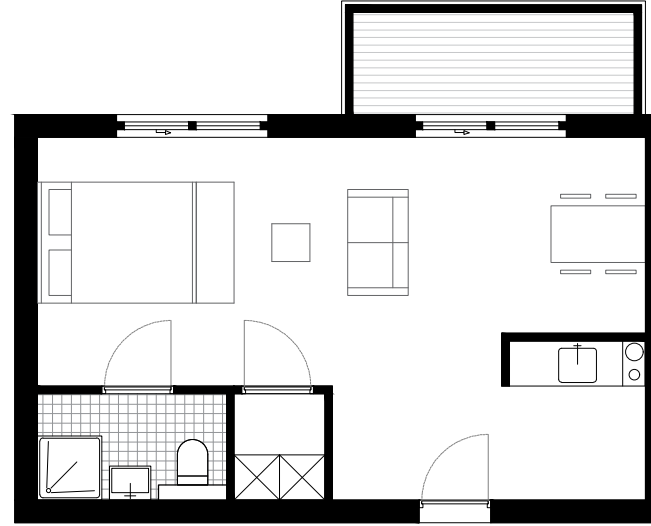
urban block



1st-5th floor



40m²



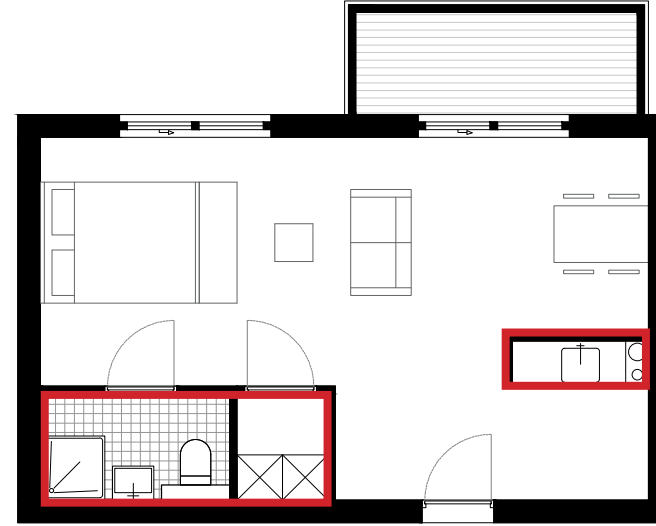
40m²



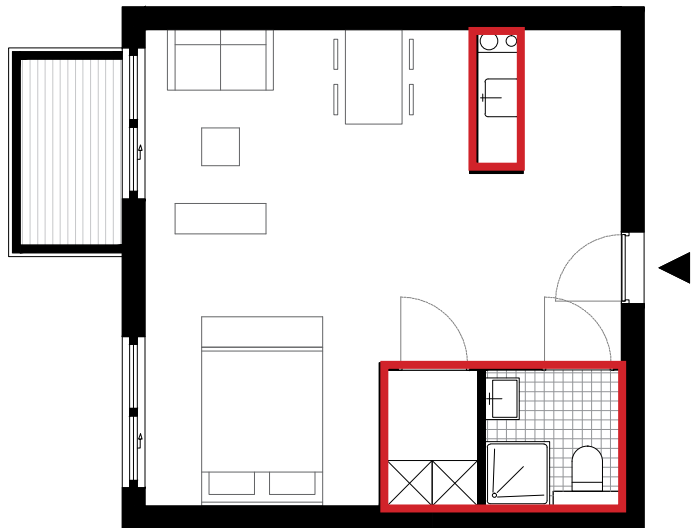
40m²



40m²

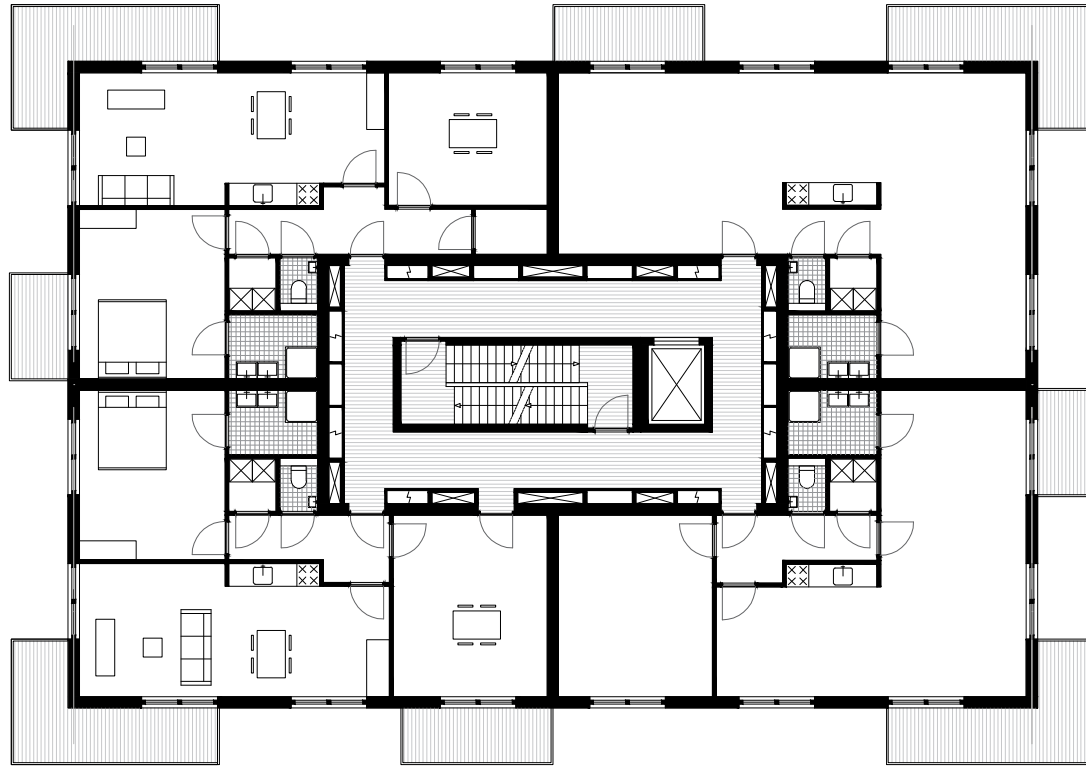


40m²



40m²





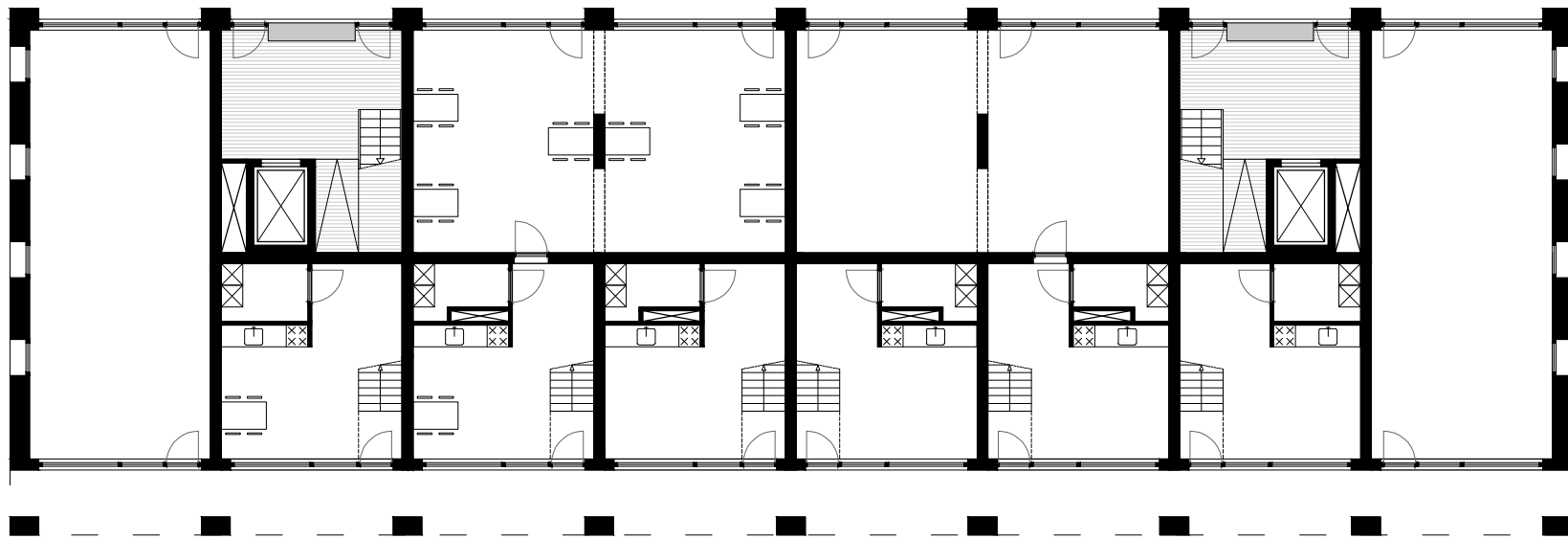
6th-7th floor



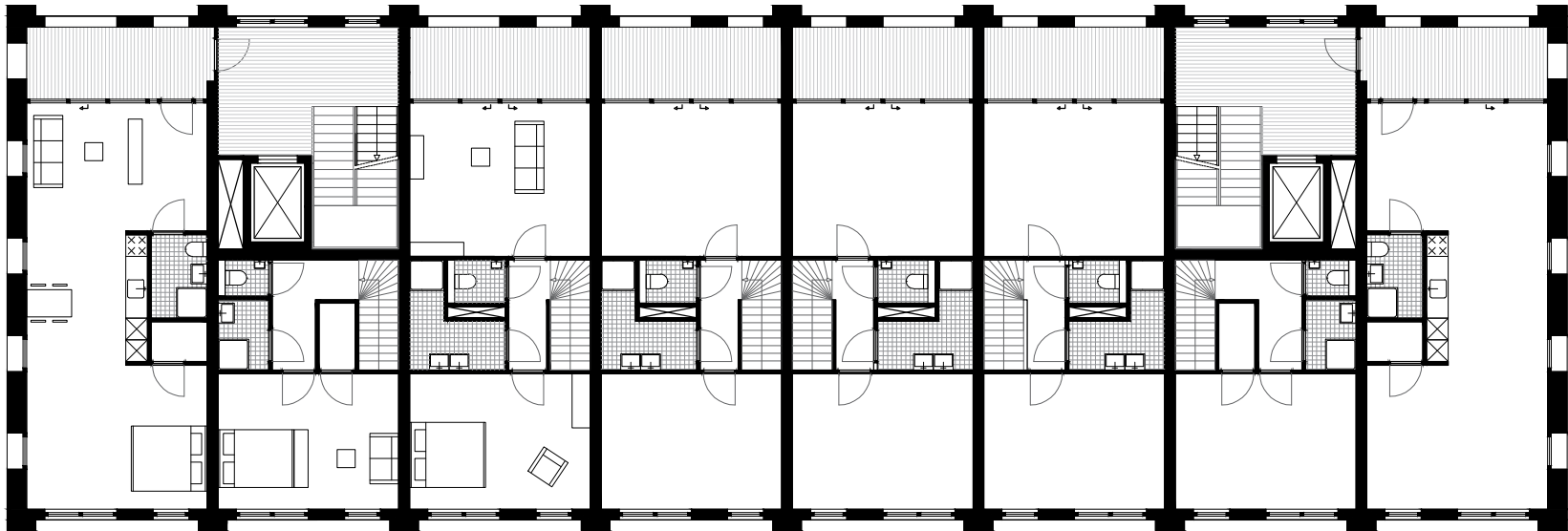


75m²

urban row



ground floor



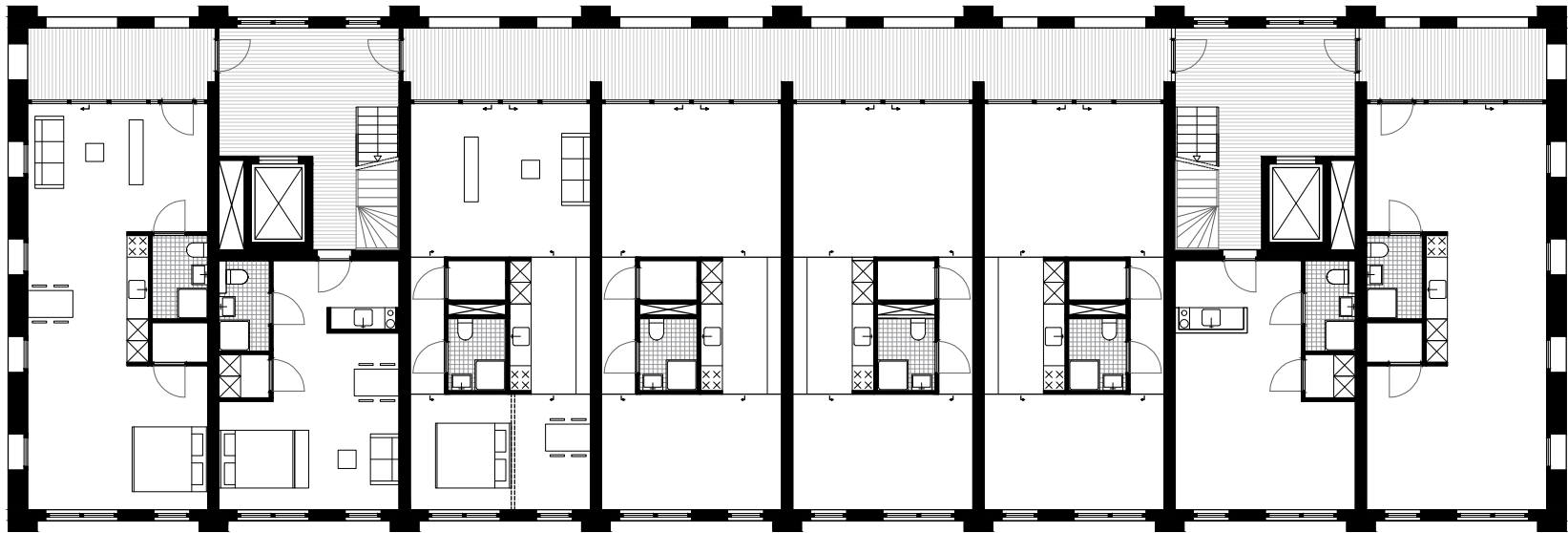
1st floor



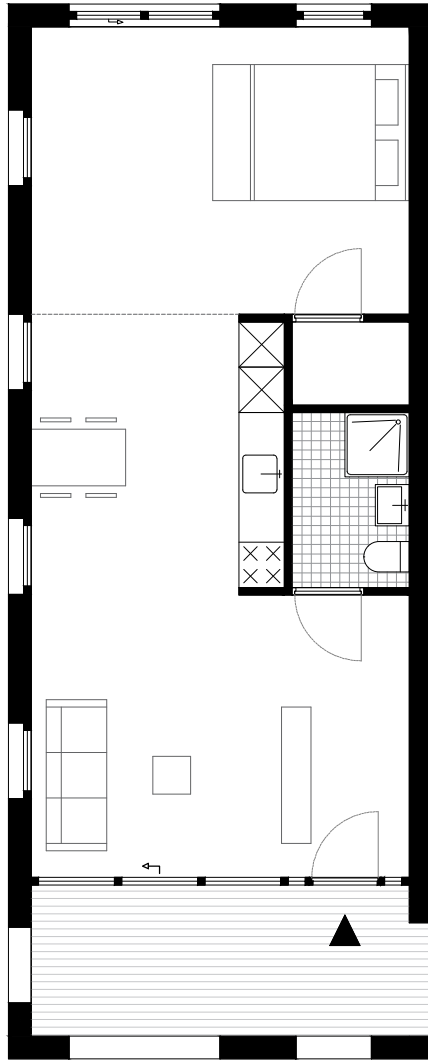
110m²



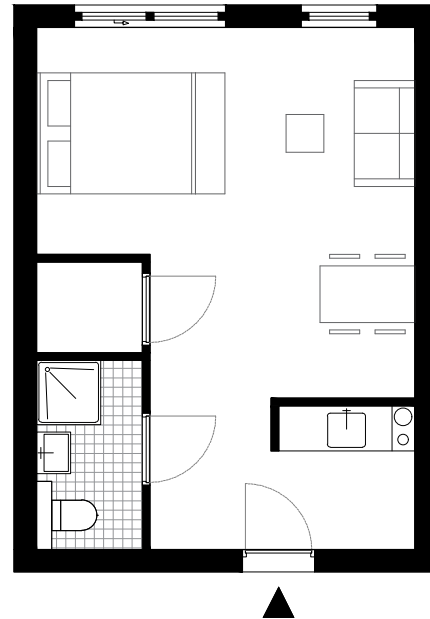
110m²



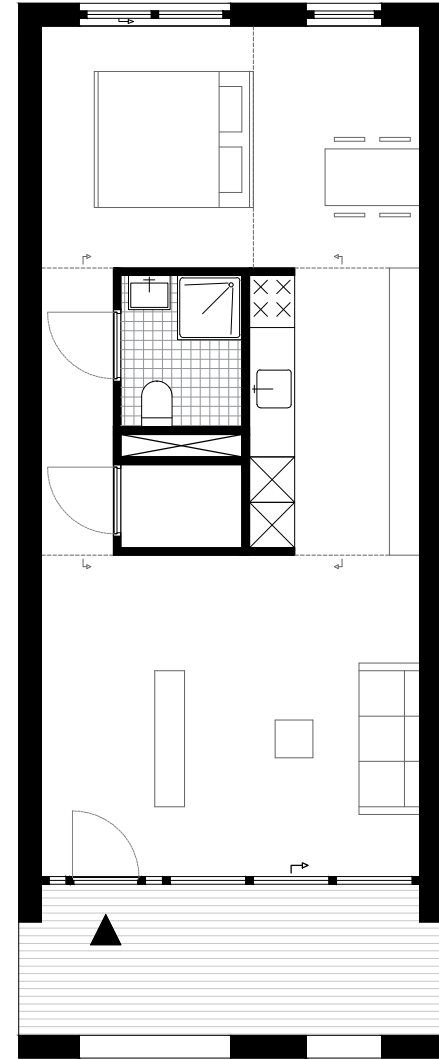
2nd - 5th floor



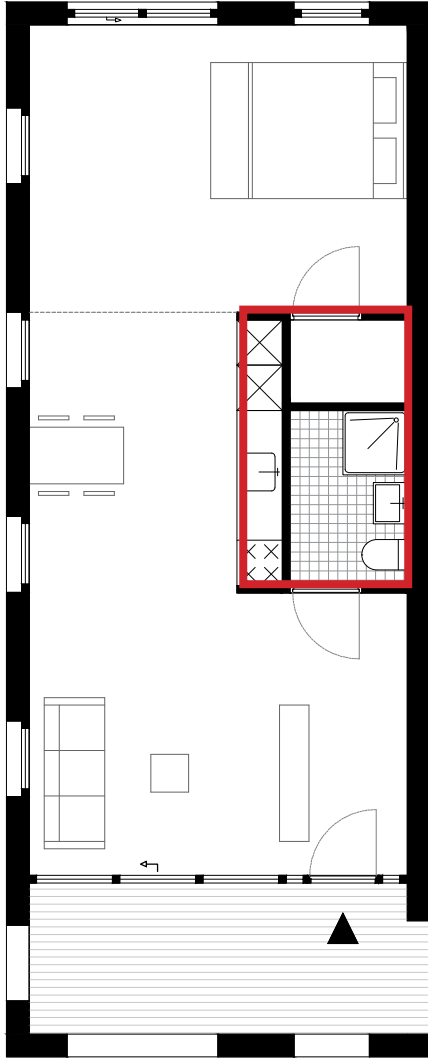
55m²



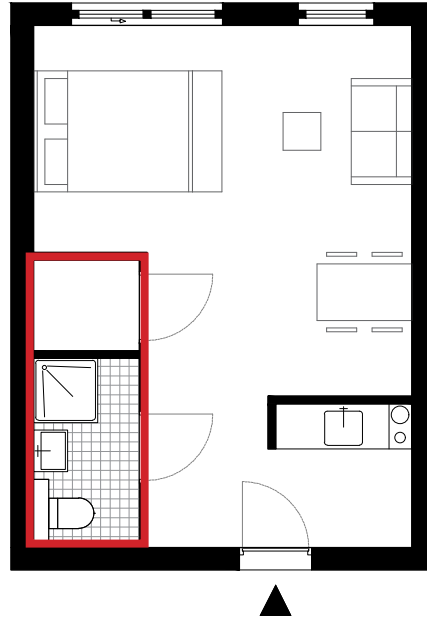
35m²



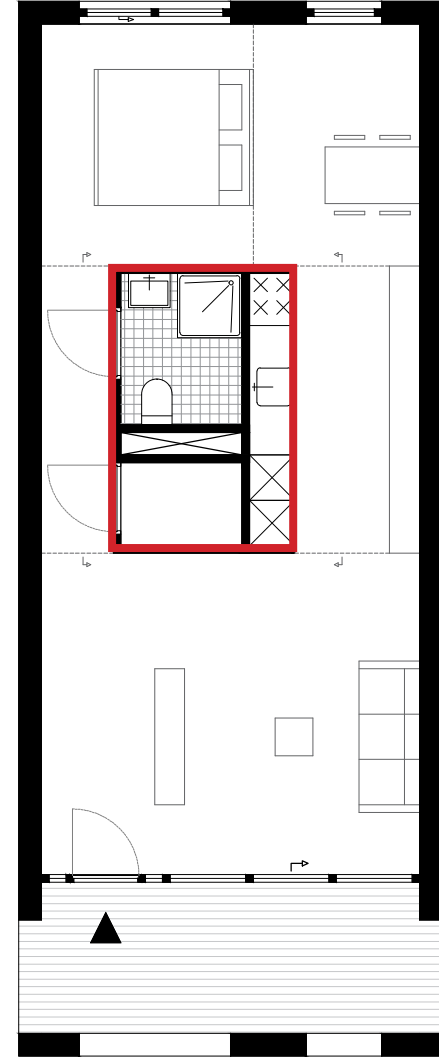
55m²



55m²

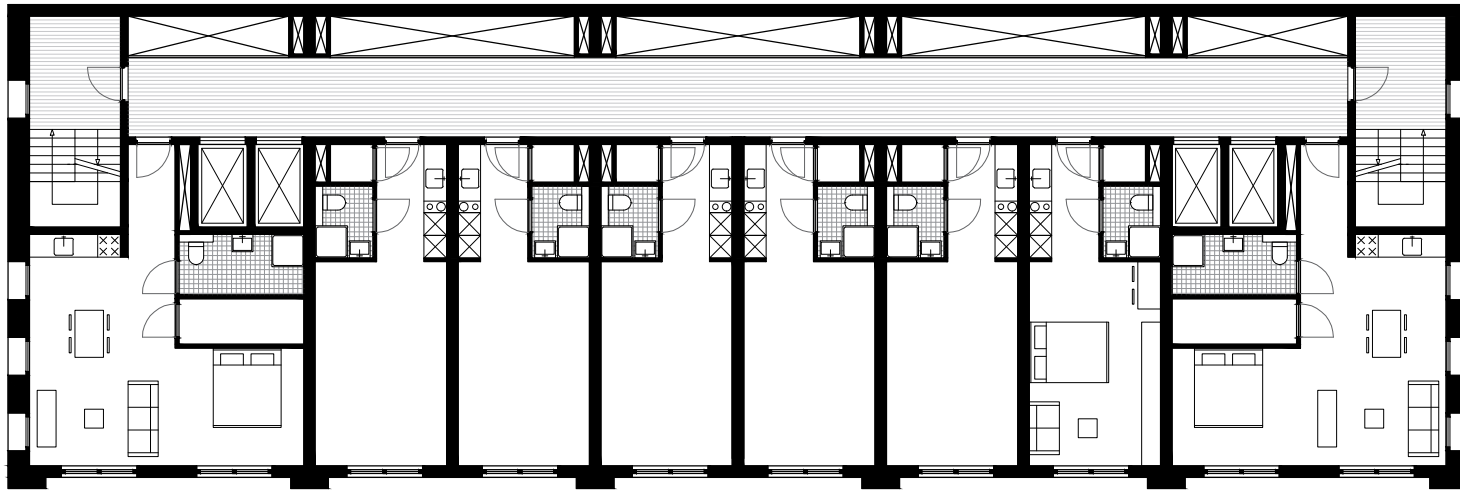


35m²



55m²

tower



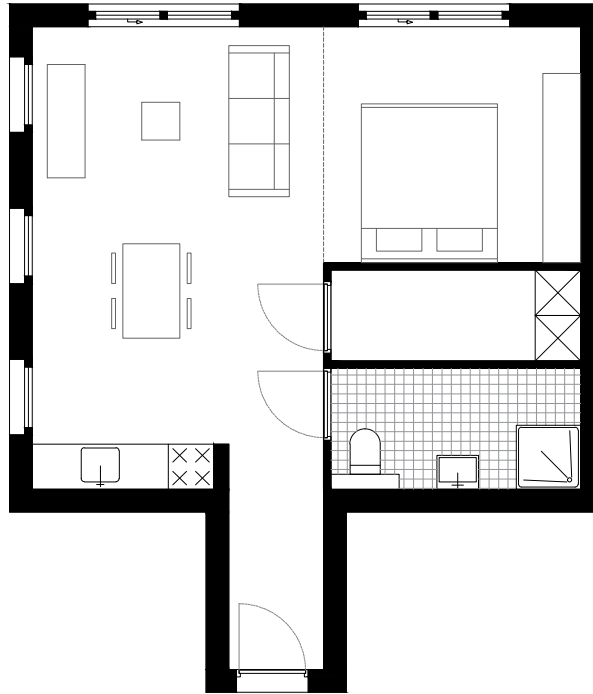
1st - 6th floor



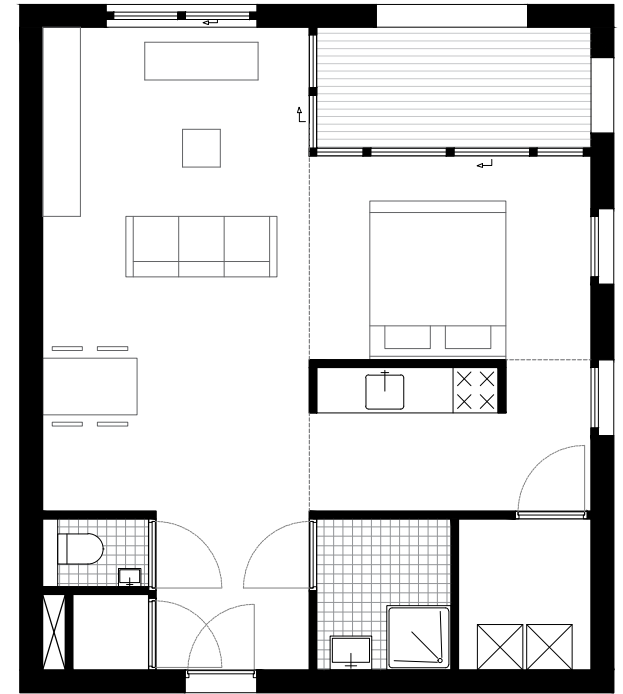
8th - 15th floor



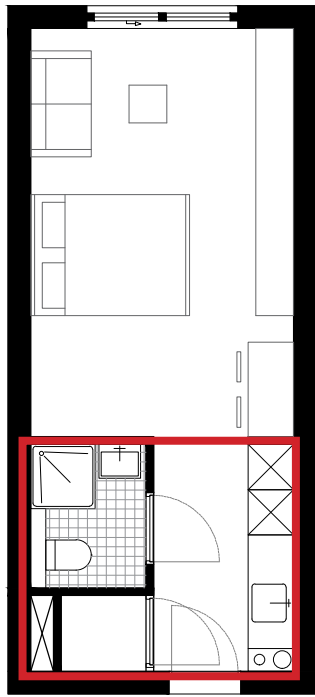
30m²



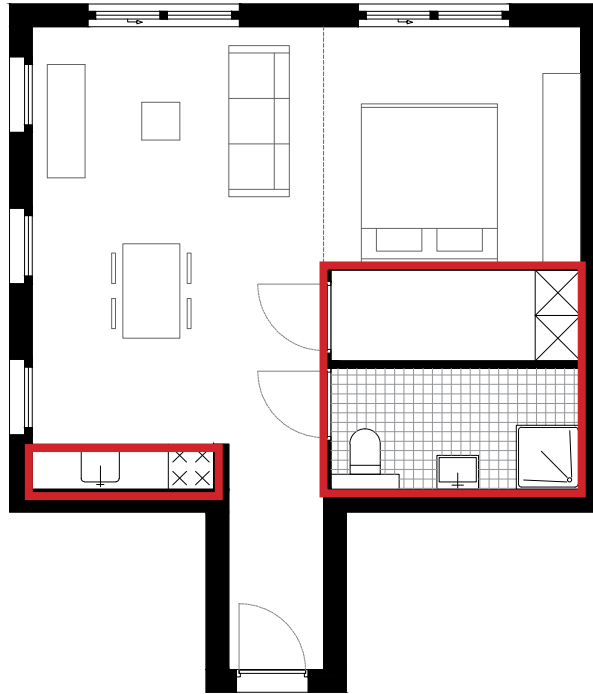
45m²



60m²



30m²



45m²



60m²



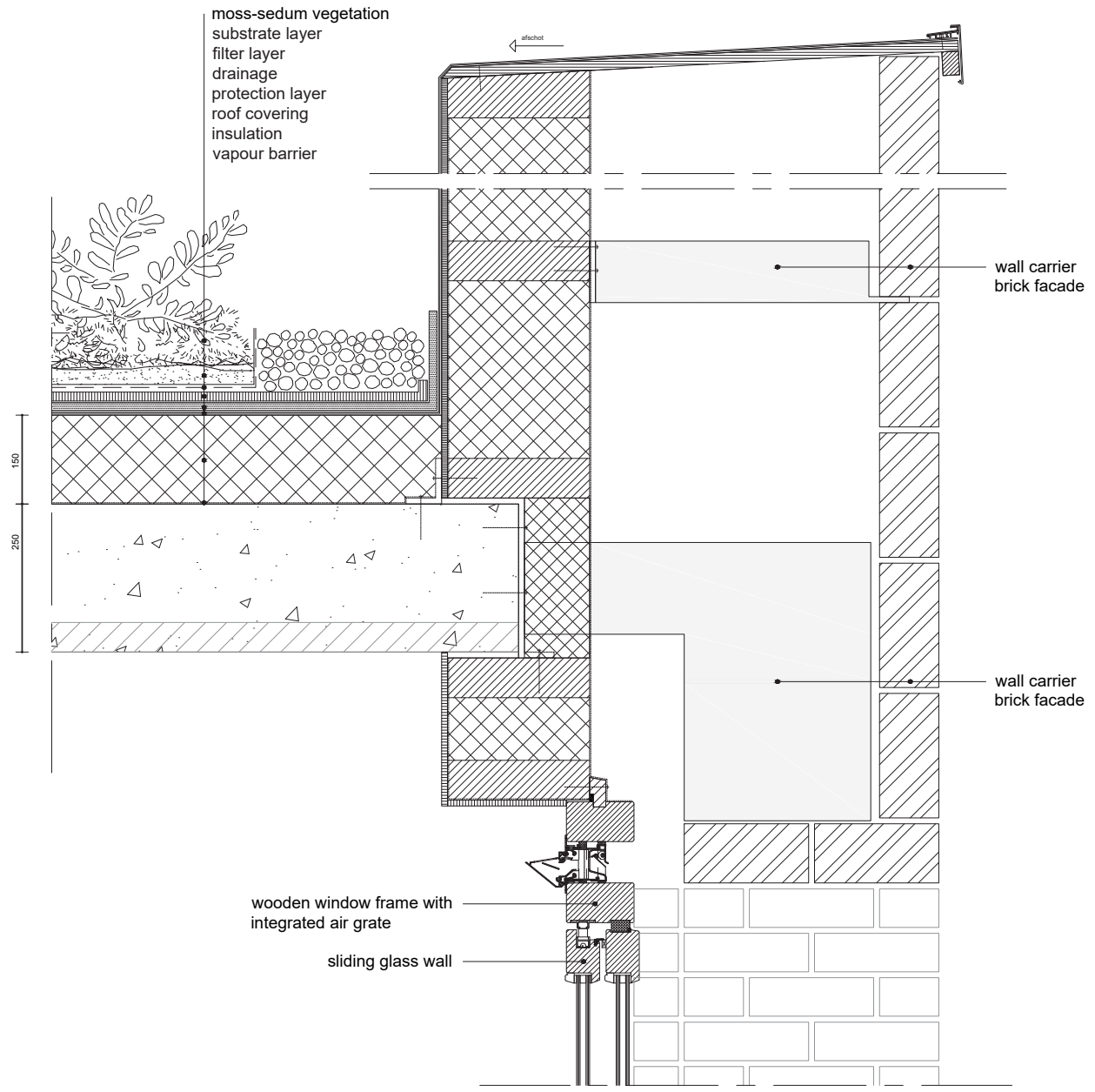


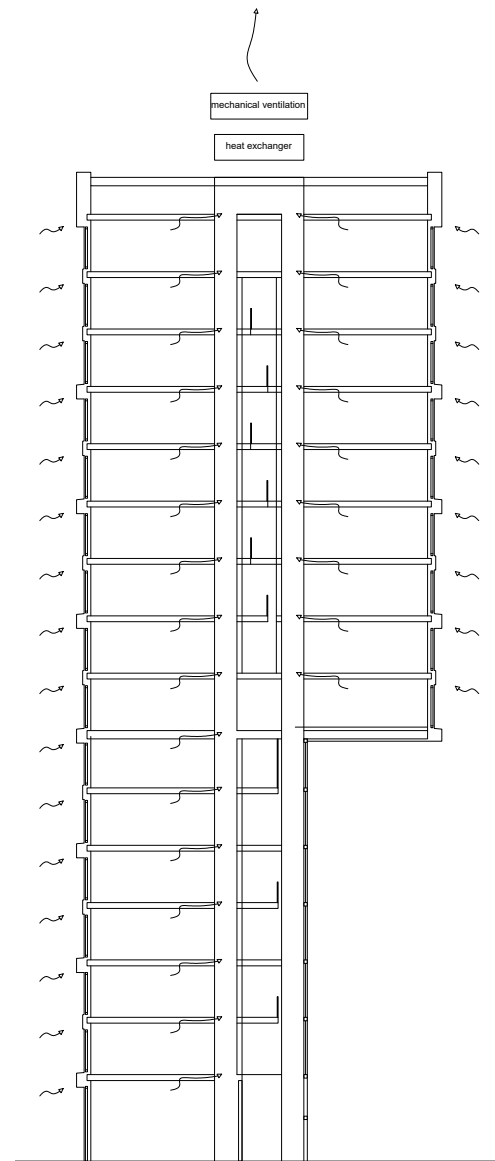
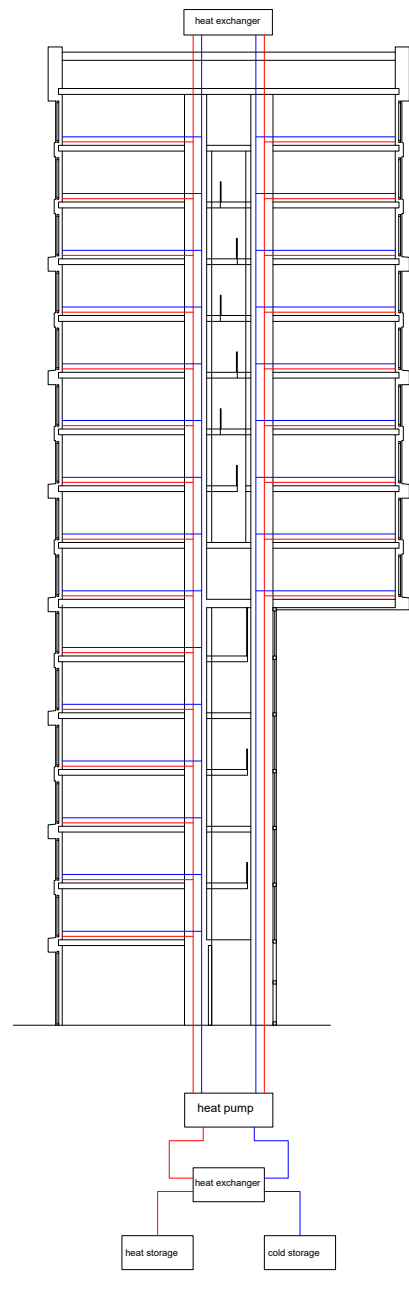
reflection

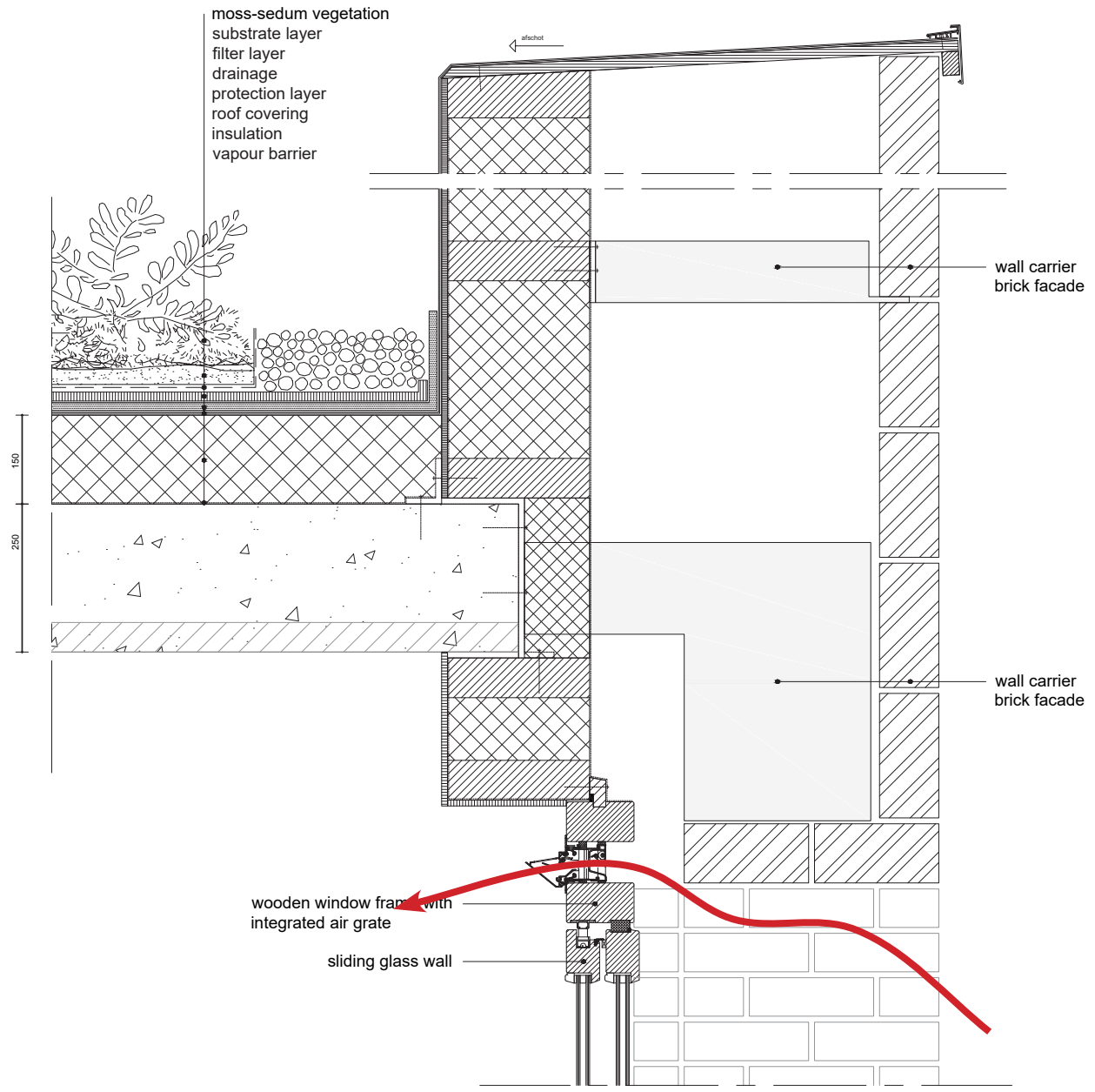
What should the architectural design of buildings comply with in order to fit in the urban fabric of the compact city?

energy
mix of functions
flexibility

energy



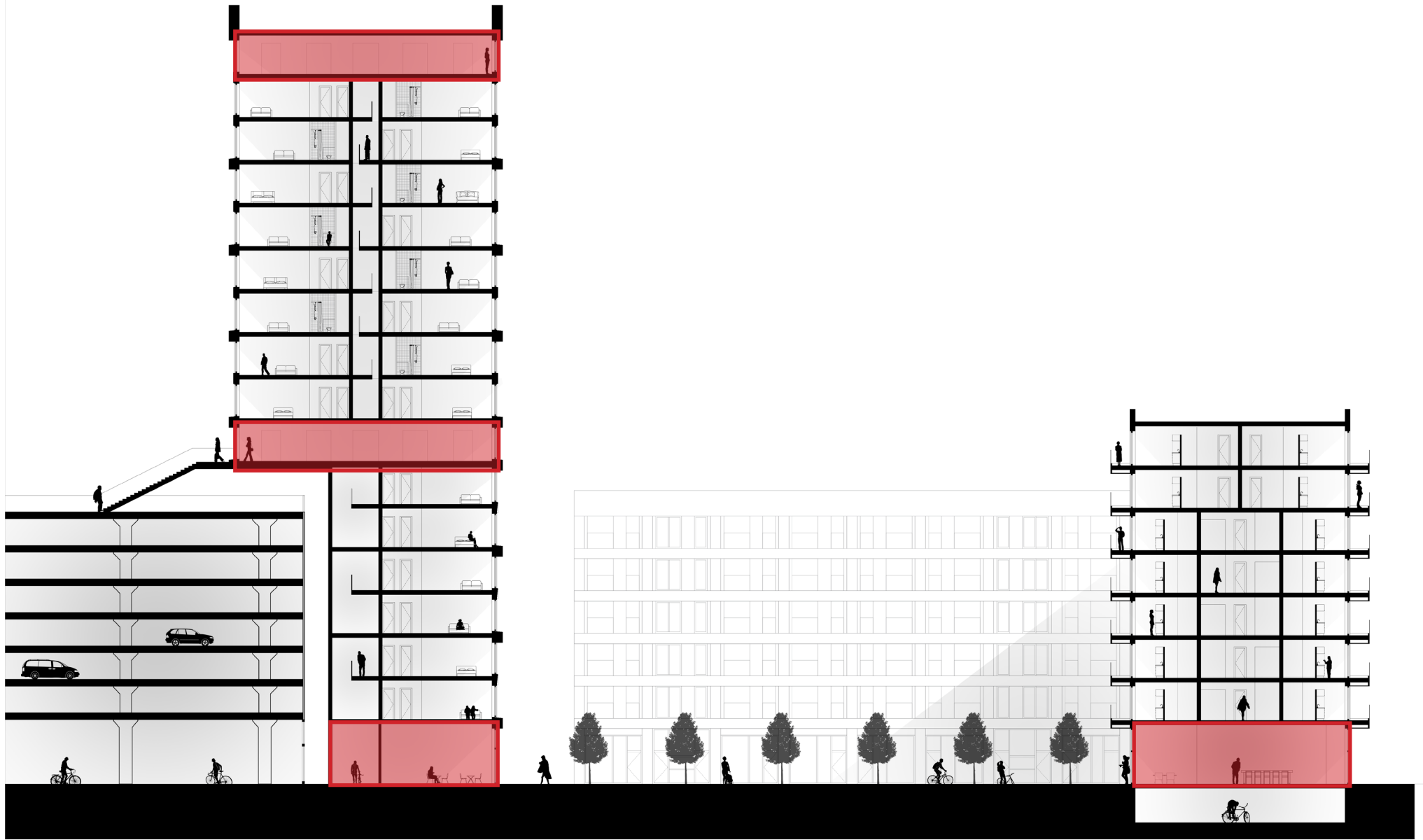


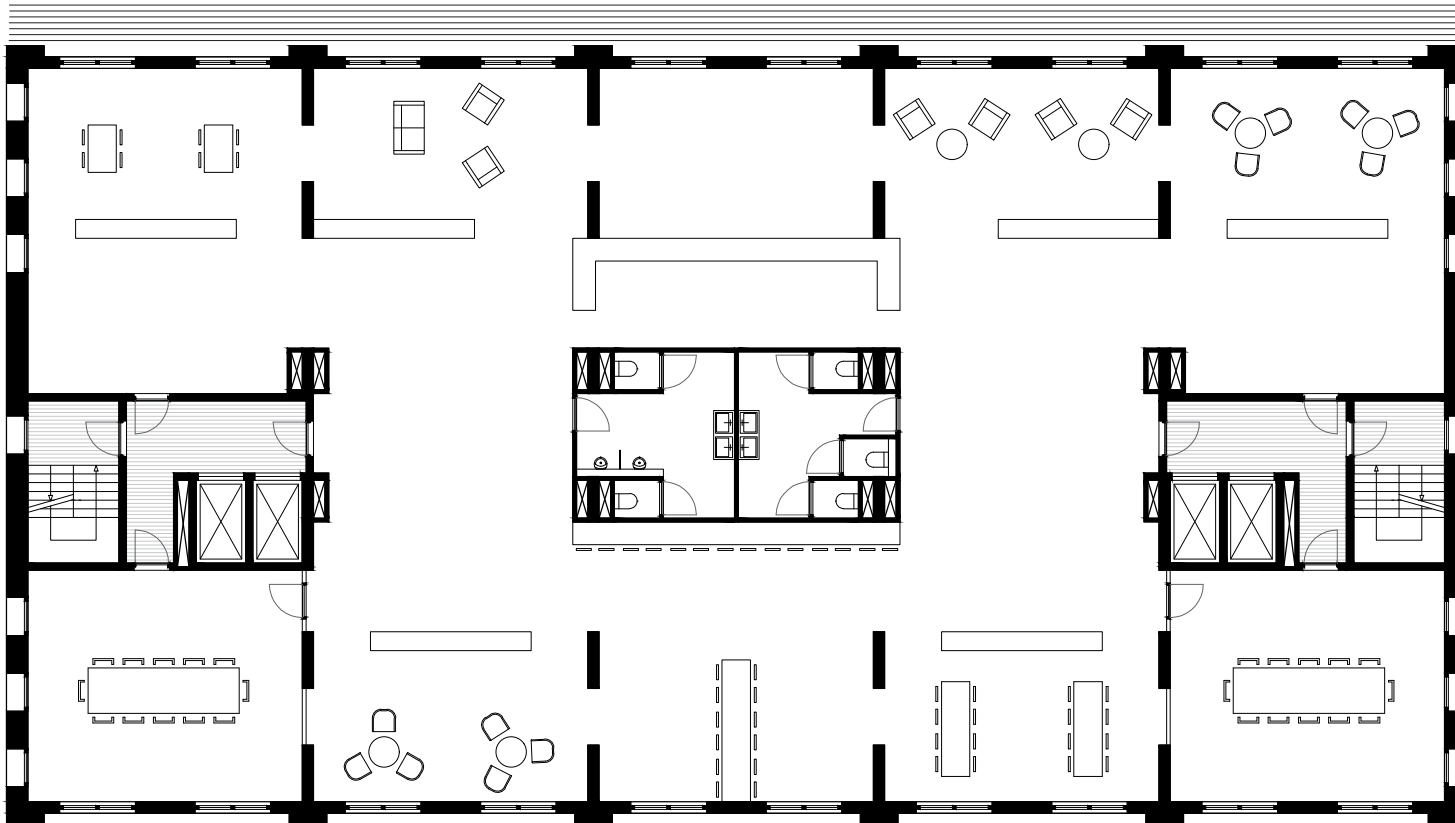


mix functions



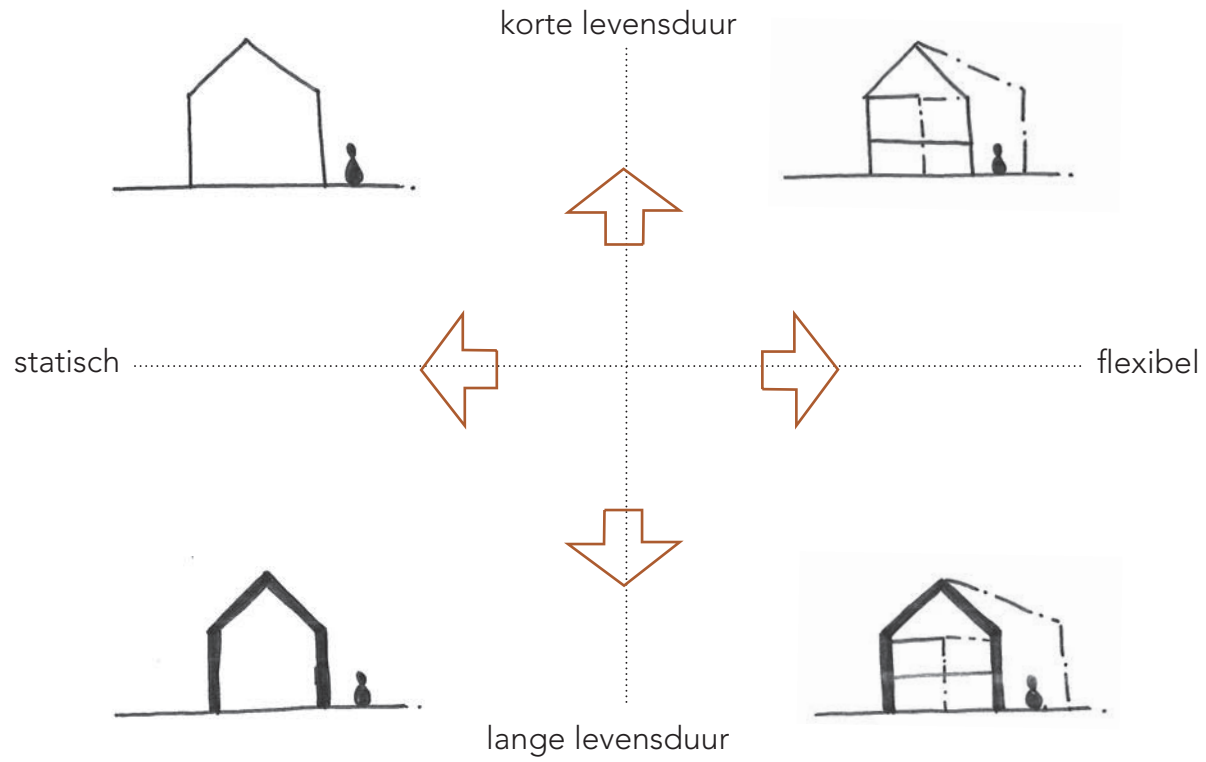








flexibility



flexible

draagonstructie:

- * overmaat in sterkte
- * overmaat en differentiatie in hoogte
- * maatvoering generiek
- * verbindingen permanent
- * mogelijkheid voor toekomstige sparingsen
- * materialen met lange technische levensduur
- * constructie losgekoppeld van andere lagen

huid:

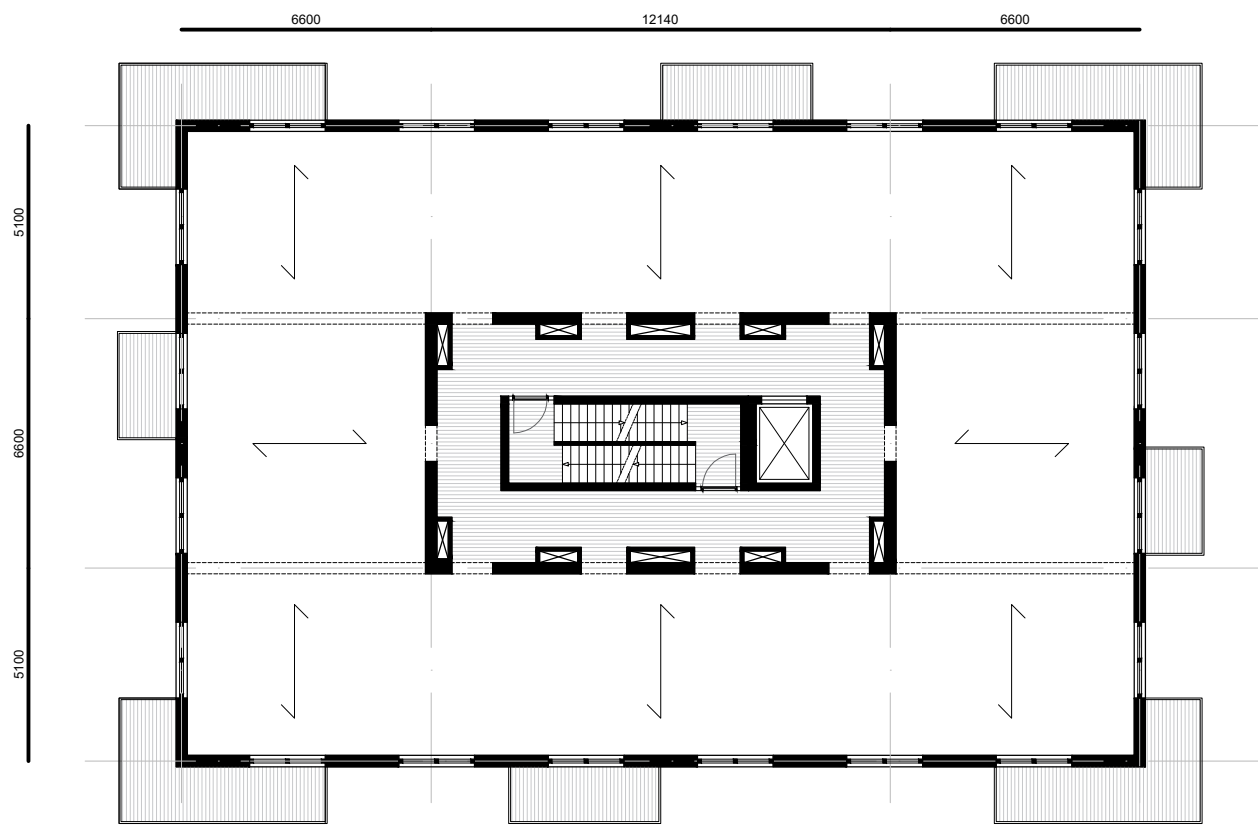
- * deels permanent deels tijdelijk
- * maatvoering generiek
- * bouwfysische overmaat voor permanente delen
- * uitgesproken identiteit voor permanente delen
- * materialen met lange technische levensduur voor permanente delen
- * materialen met minimale milieubelasting voor de tijdelijke delen
- * demontabele elementen voor tijdelijke delen
- * gevel losgekoppeld van andere lagen

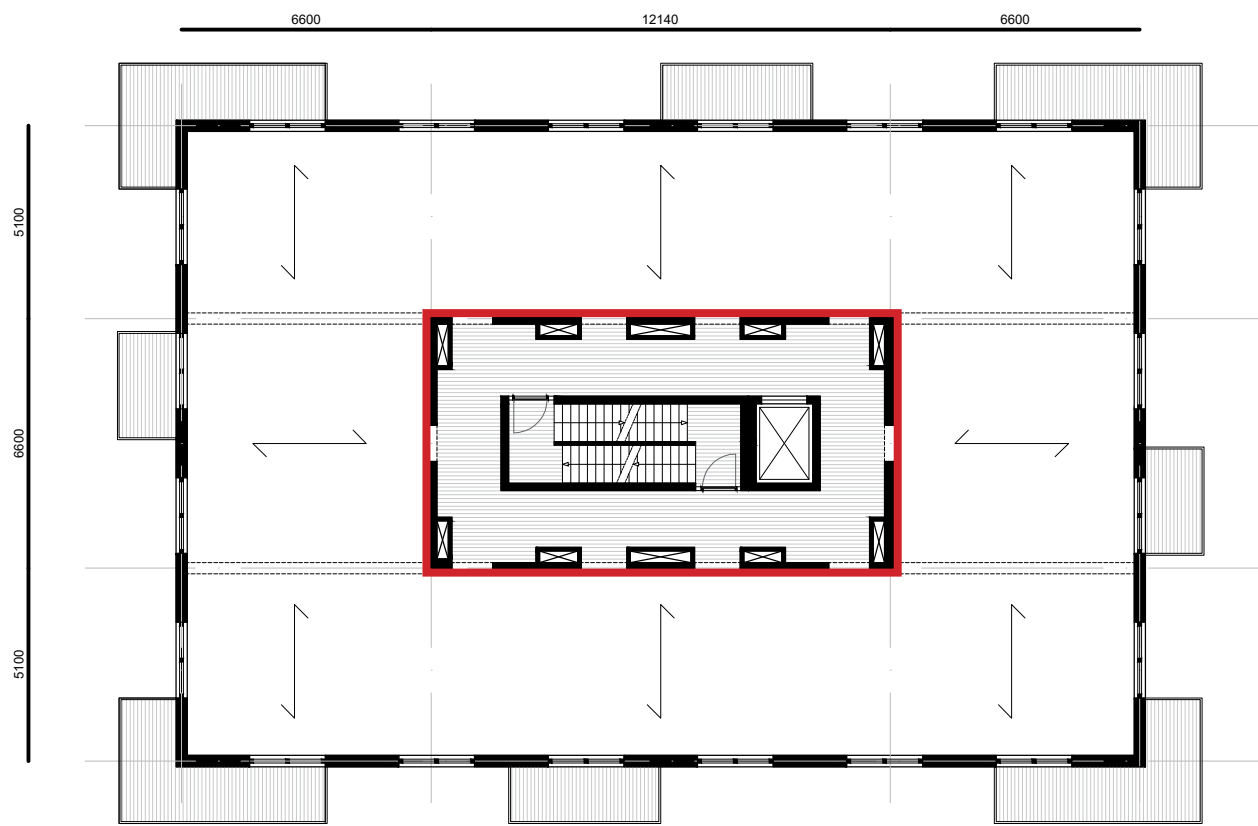
enscenering:

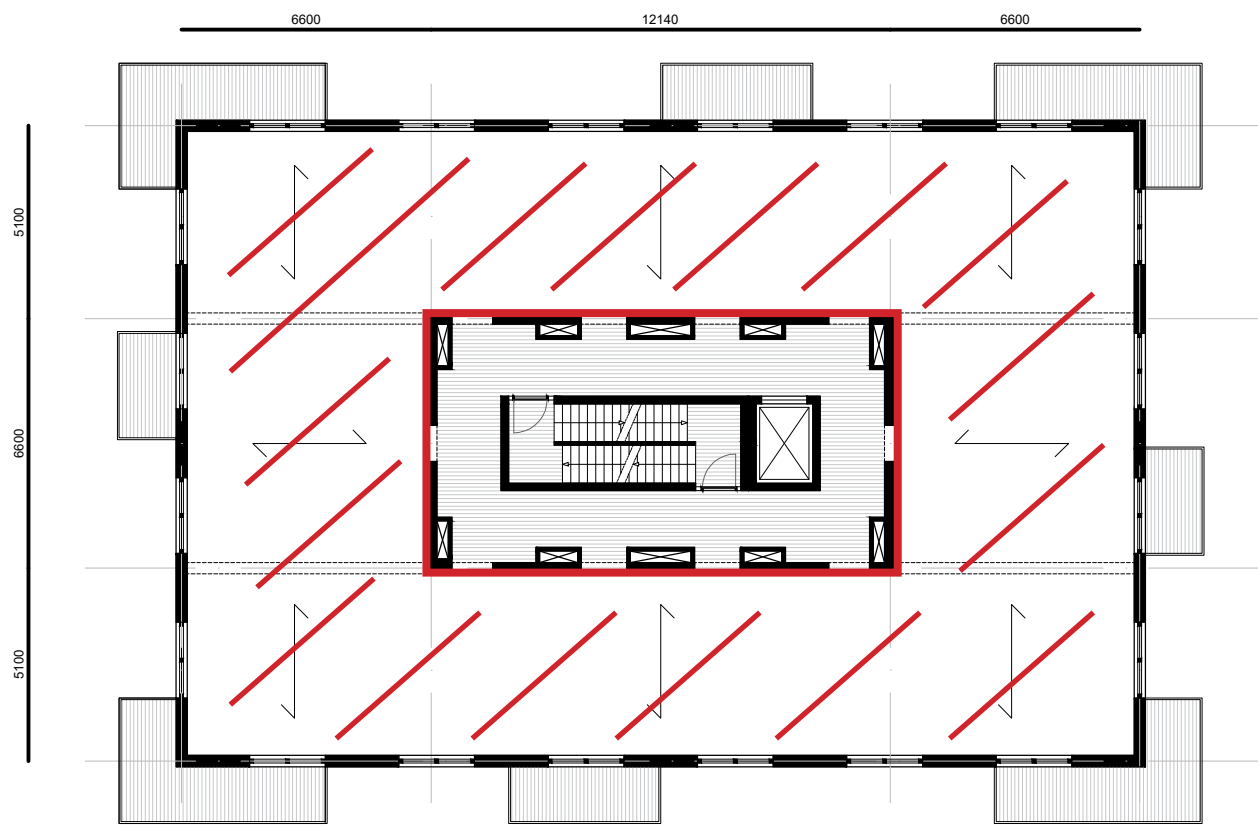
- * licht en slank
- * demonteerbaar en veranderbaar interieur
- * verbindingen demontabel en droog
- * layer losgekoppeld van andere lagen
- * streven naar herbegruik elementen
- * element beperkte milieubelasting

installaties:

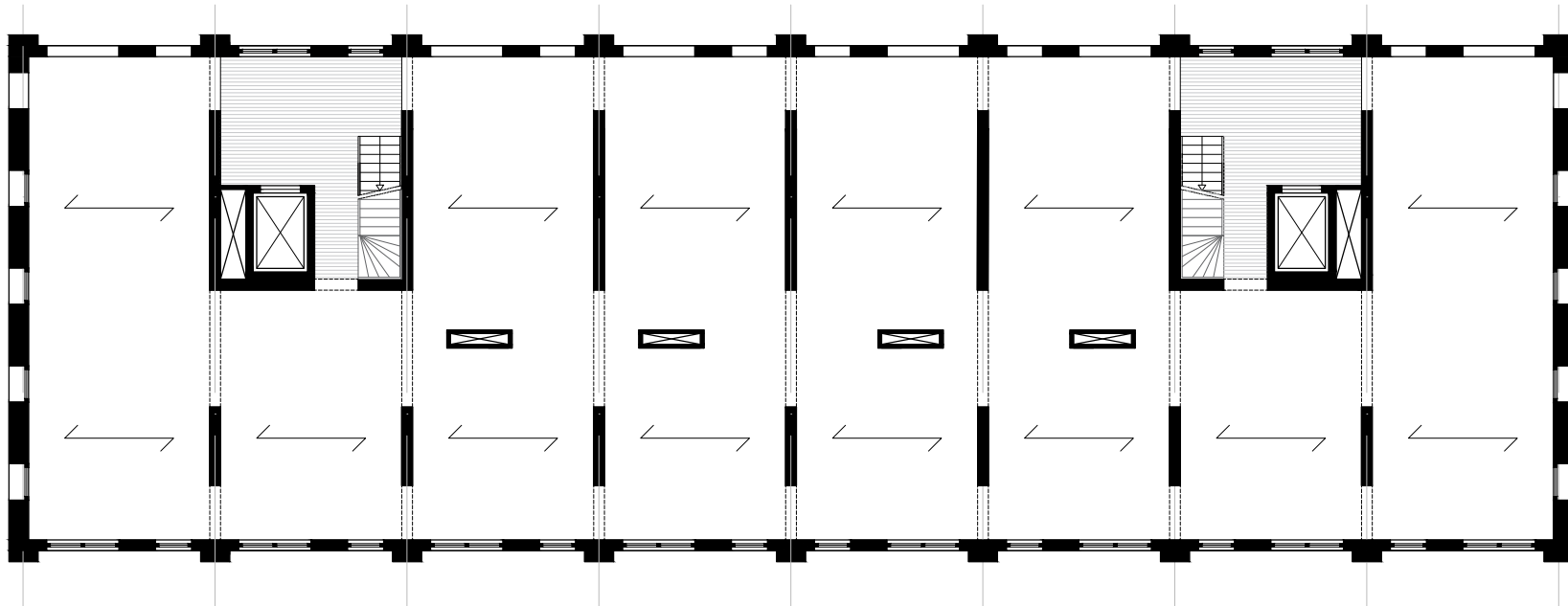
- * installaties en schachten veel overmaat
- * installaties goed bereikbaar voor onderhoud
- * installaties losgekoppeld van andere lagen







5400 5400 5400 5400 5400 5400 5400 5400



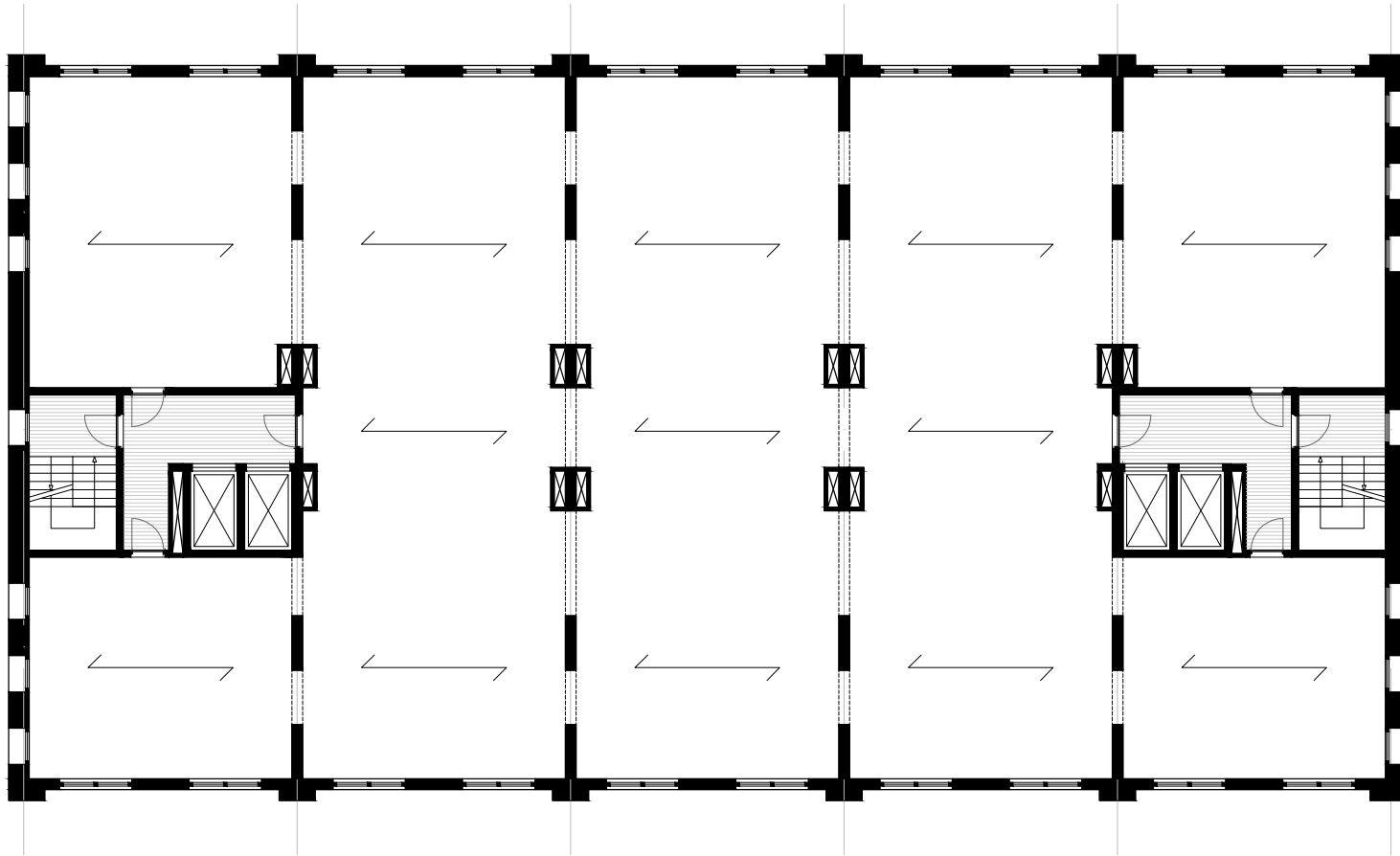
7550

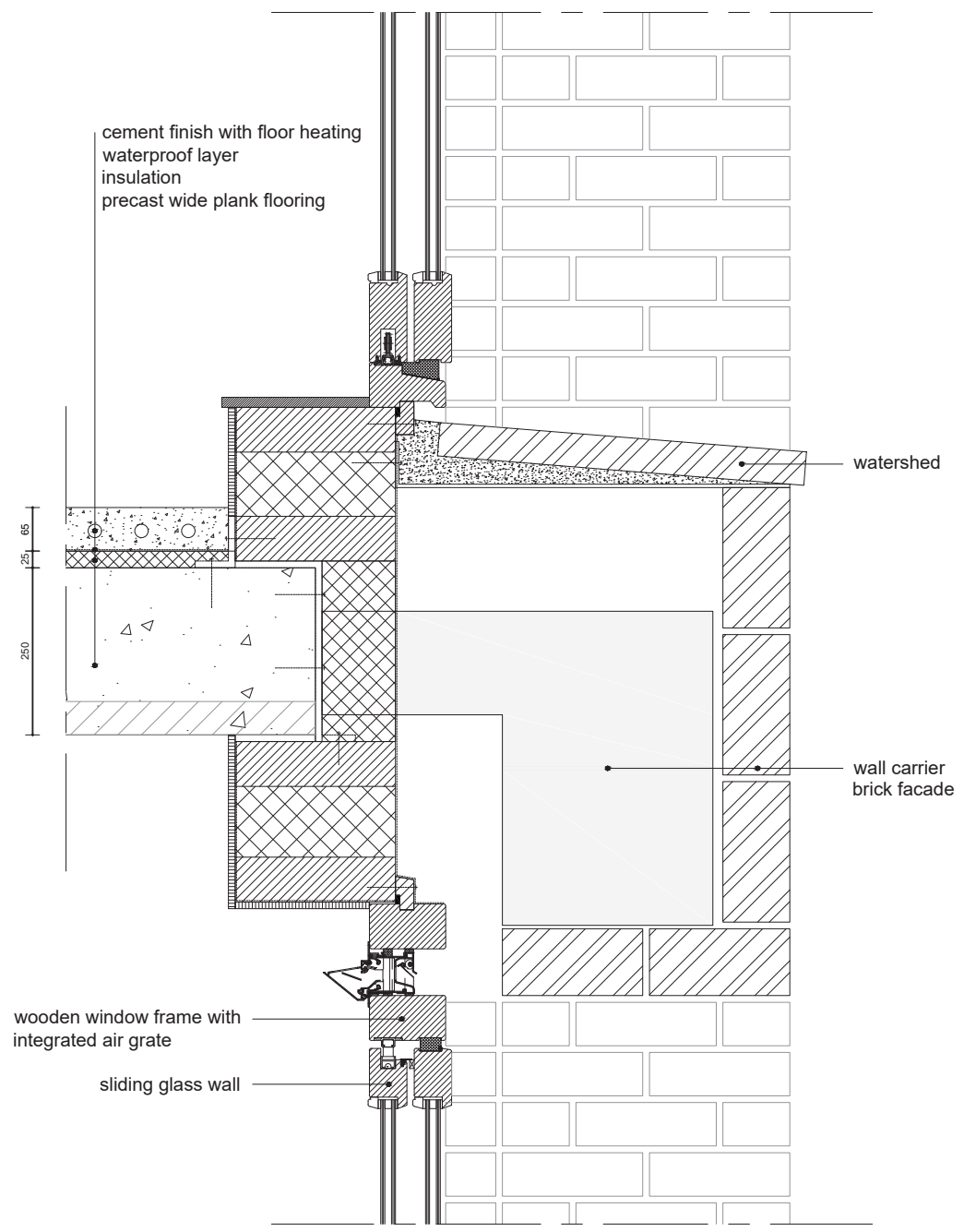
7550

7550

7550

7550





cement finish with floor heating
waterproof layer
insulation
precast wide plank flooring

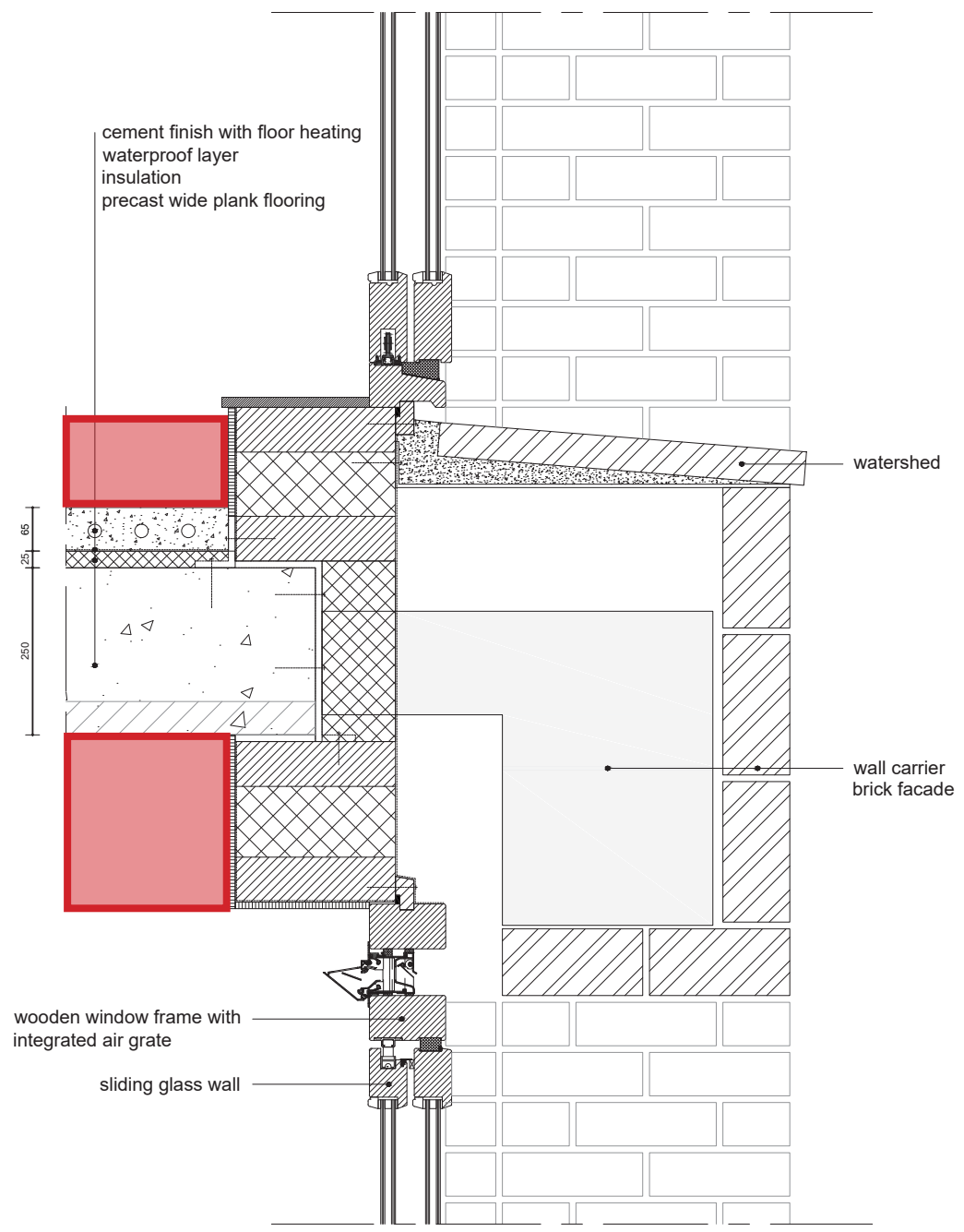
watershed

wall carrier
brick facade

wooden window frame with
integrated air grate

sliding glass wall

250
25
65



cement finish with floor heating
waterproof layer
insulation
precast wide plank flooring

watershed

wall carrier
brick facade

wooden window frame with
integrated air grate
sliding glass wall

65
25
250



