



*The Flipbook of*

**Between Thresholds and Silhouettes**  
Unlocking Agency with the Youth in Hoboken and Kiel

**Anjaly Teresa Joseph 5959330**

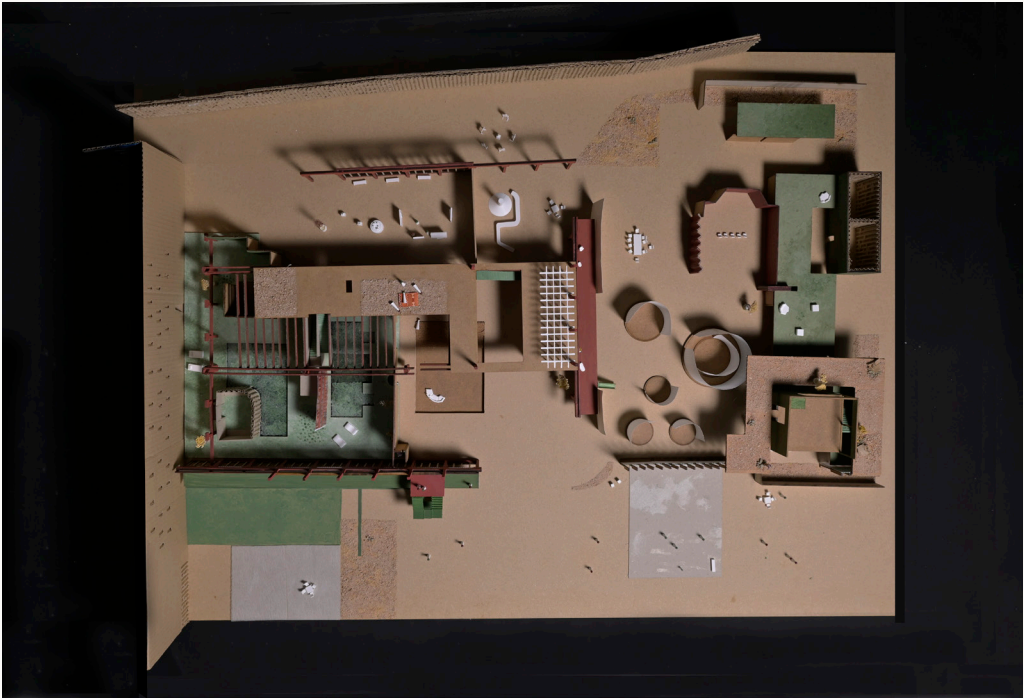
MSc 3/4 Graduation Studio 2024-2025  
Low Town Down Town, Urban Architecture, TU Delft

*Between Thresholds and Silhouettes is my love letter to Hoboken and Kiel. It is a delicate striking of balance between establishing a project rooted in adaptability while staying loyal to the community it is established in. A project that will grow with the community it serves and transform with them as they need, as new challenges arise. A space allowing temporality, messiness and iteration. The final part of the thesis presentation was developed as a stop motion video. The video tries to form a merger between research, design and building technology. The most obvious decision for a catalogue then was a flipbook. This book is established in chapters akin to how the project develops.*



## ***The Stage***

*The stop motion was made with movable items set against two models- a 1:33 fragment model of the intersection between the heritage factory buildings and 1:100 concept model visualising colours, screens and partitions. The two models symbolised everyday life set as scenes.*





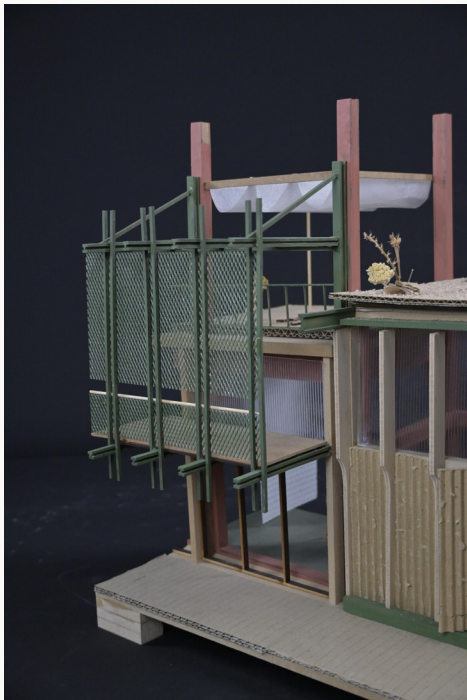










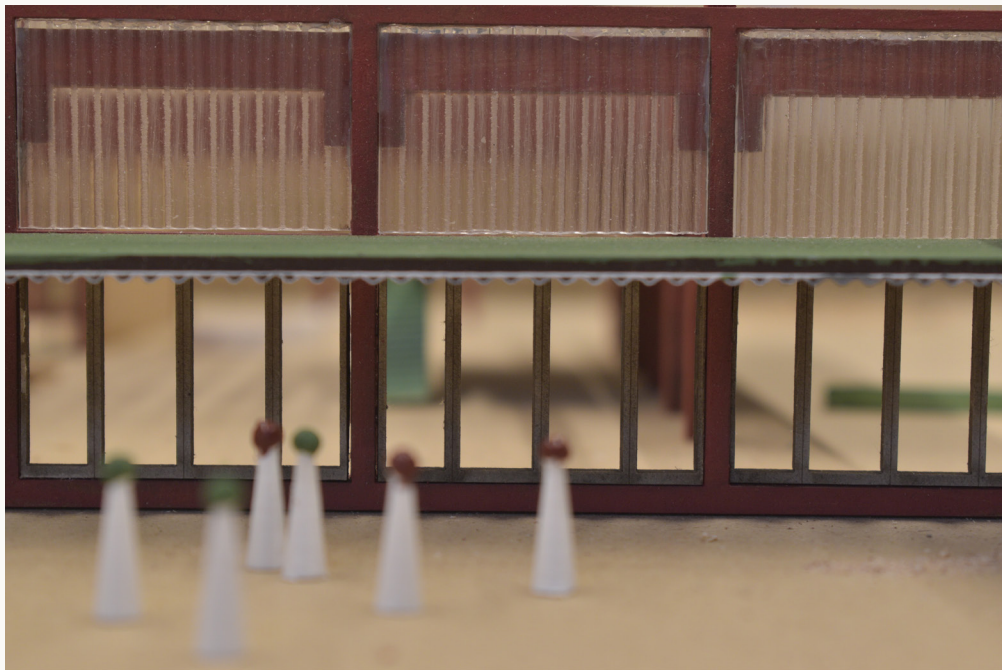




# 1

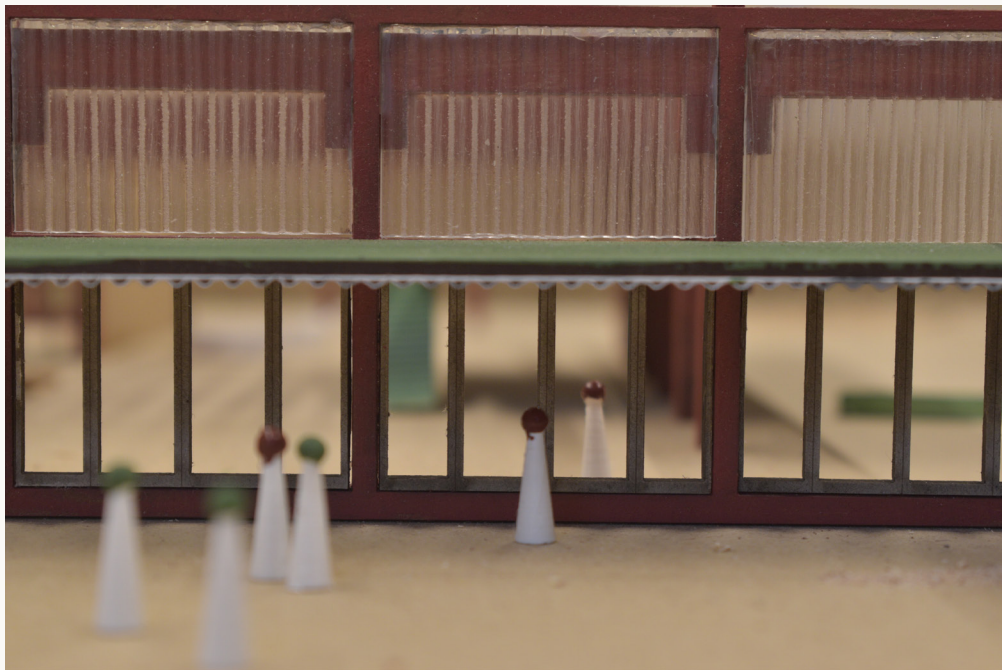
## ***Flows***

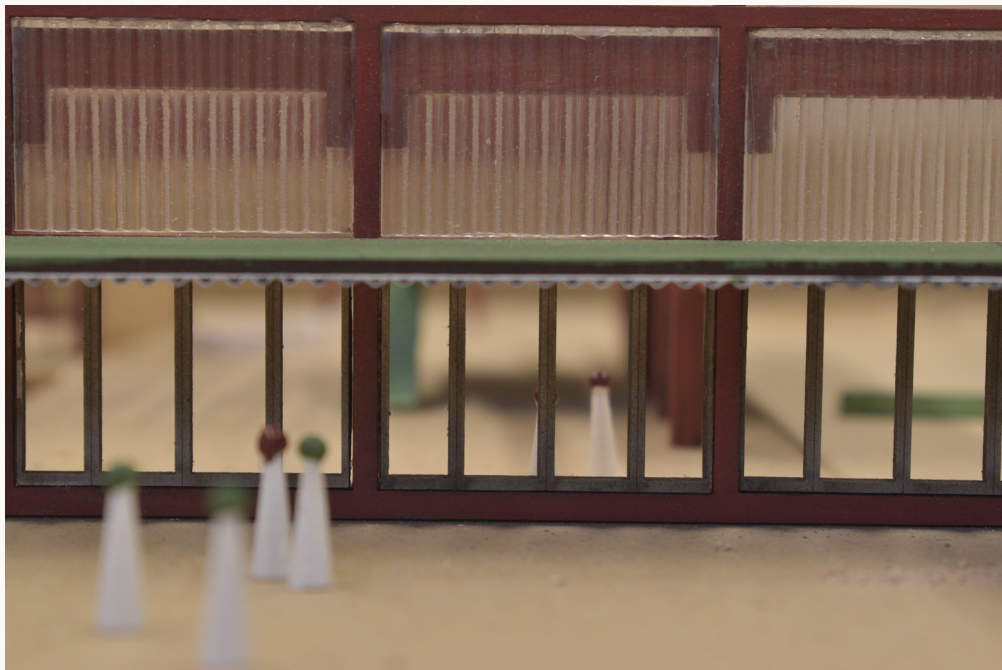
*A key component of our masterplan was maintaining and preserving routes that people took in their everyday life. Passage between thresholds should be as smooth as possible. The flows are established first and then the building and its services are inserted into this network—to the ground floor, the mezzanine and the roof.*



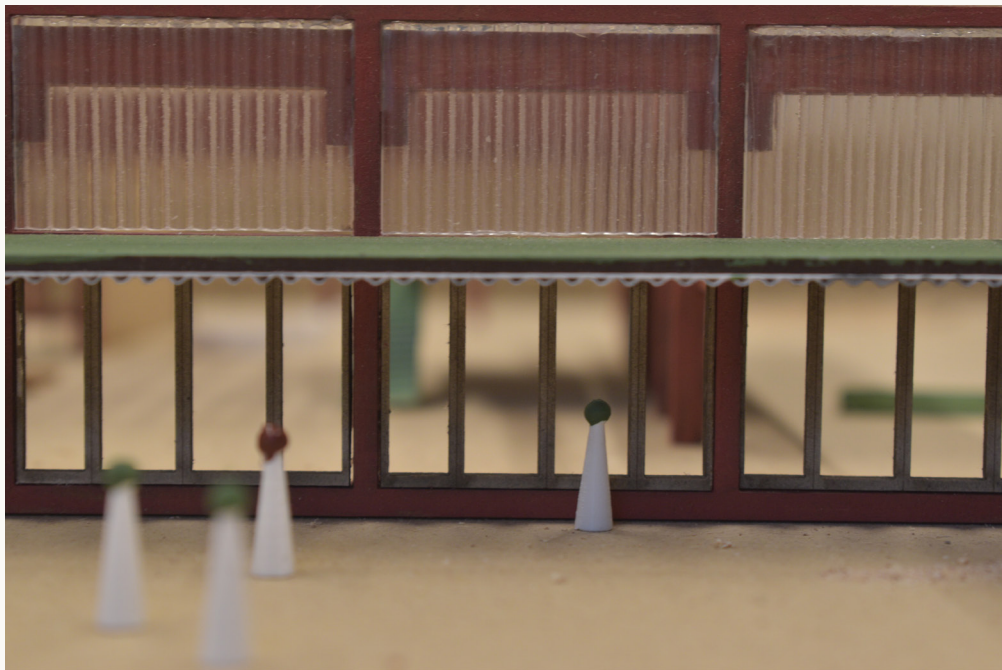


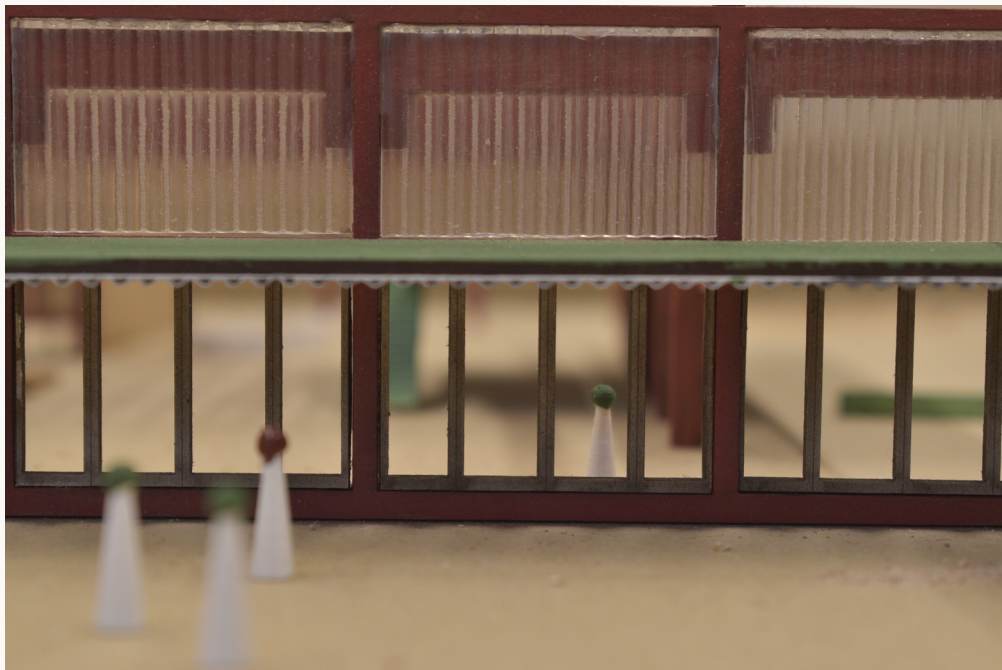




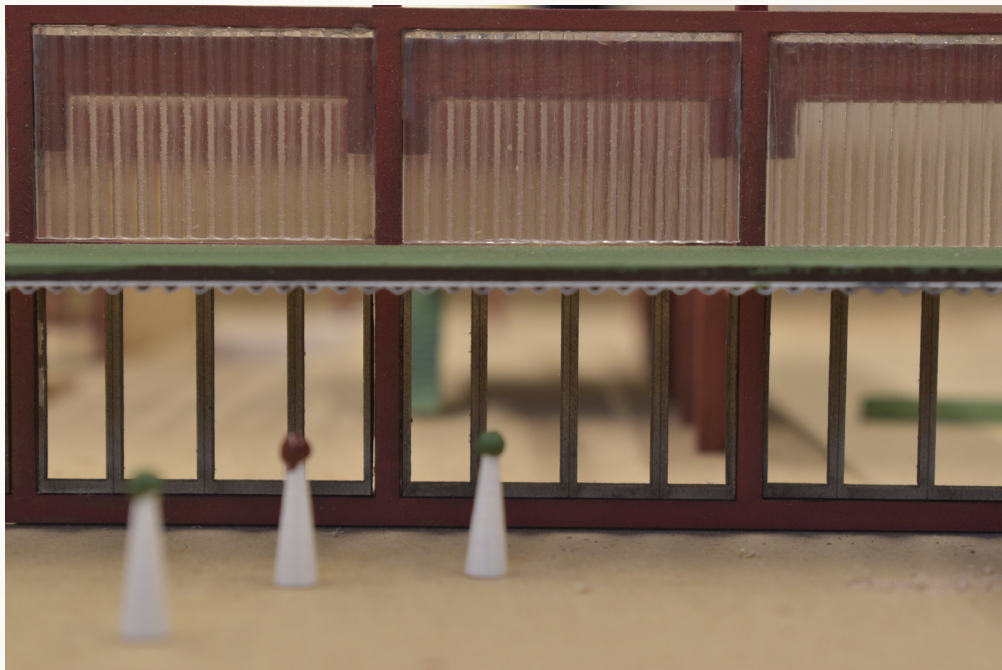




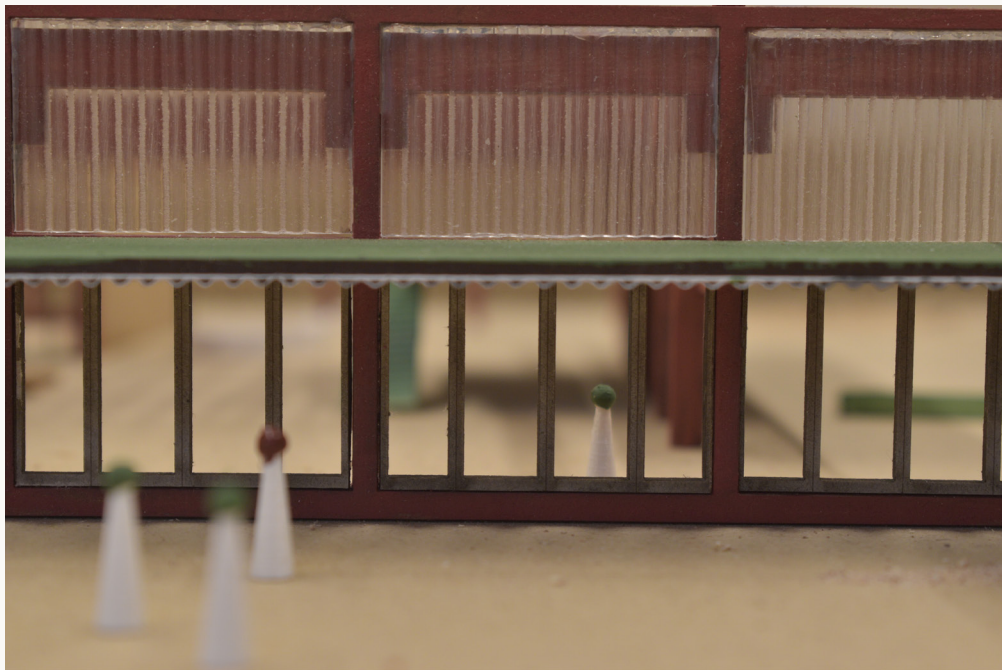


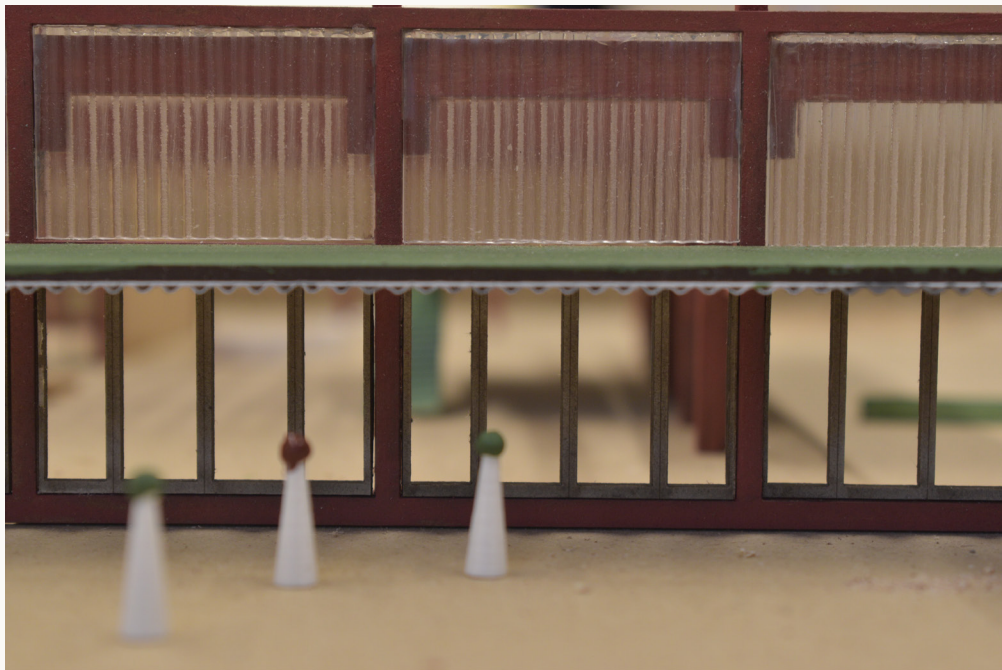














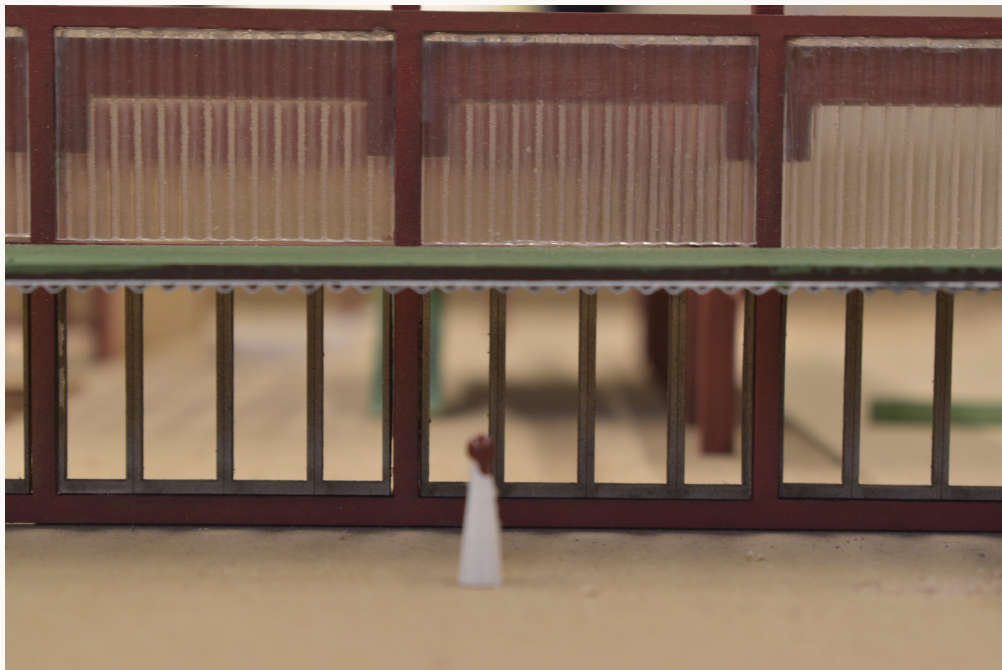






































## **Thresholds**

*The thresholds in this project are treated with care and a delicate touch.*

*The threshold between spaces either stays separate, overlap or is blurred. Ambiguity in space - in function, scale, and access - became a deliberate design tool. It allows youth to navigate, test, and personalize their environment. This layering cultivates safety through choice and adaptability, while also allowing moments of playful risk - social, emotional, or creative. For youth, especially those navigating systemic exclusion, spatial ambiguity enables exploration without overexposure. It encourages gradual exposure to publicness, letting individuals choose levels of interaction. Screens, movable walls and furniture allow the user to stay in control and choose their exposure.*





















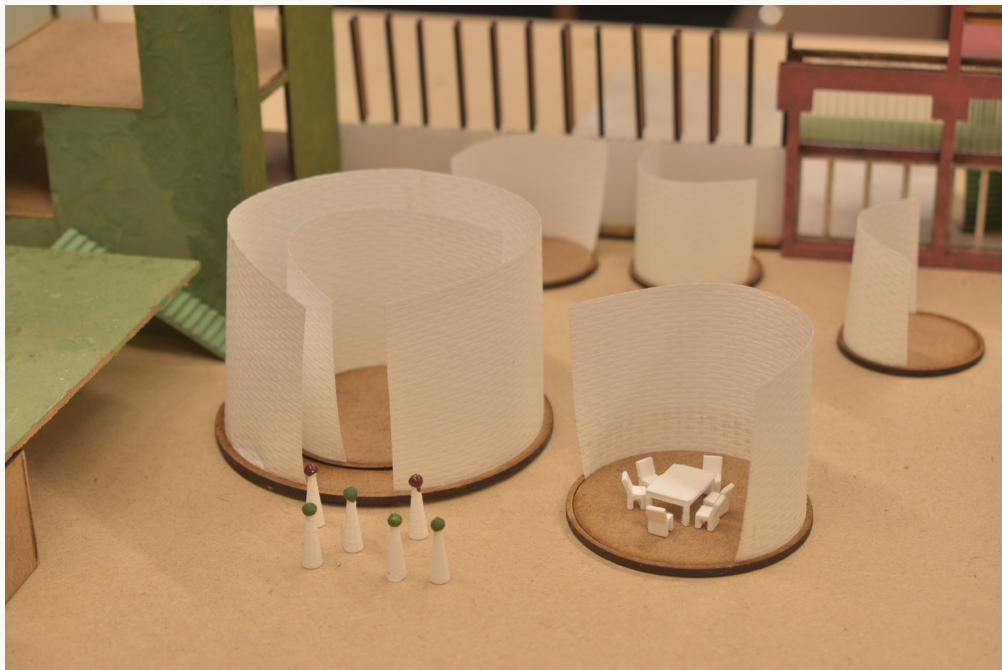








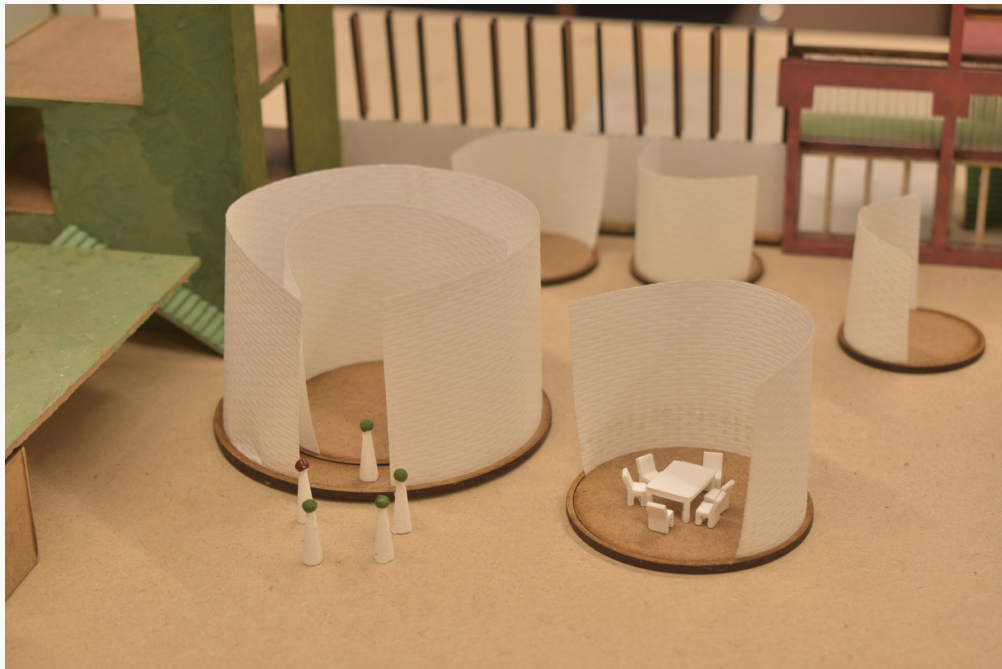


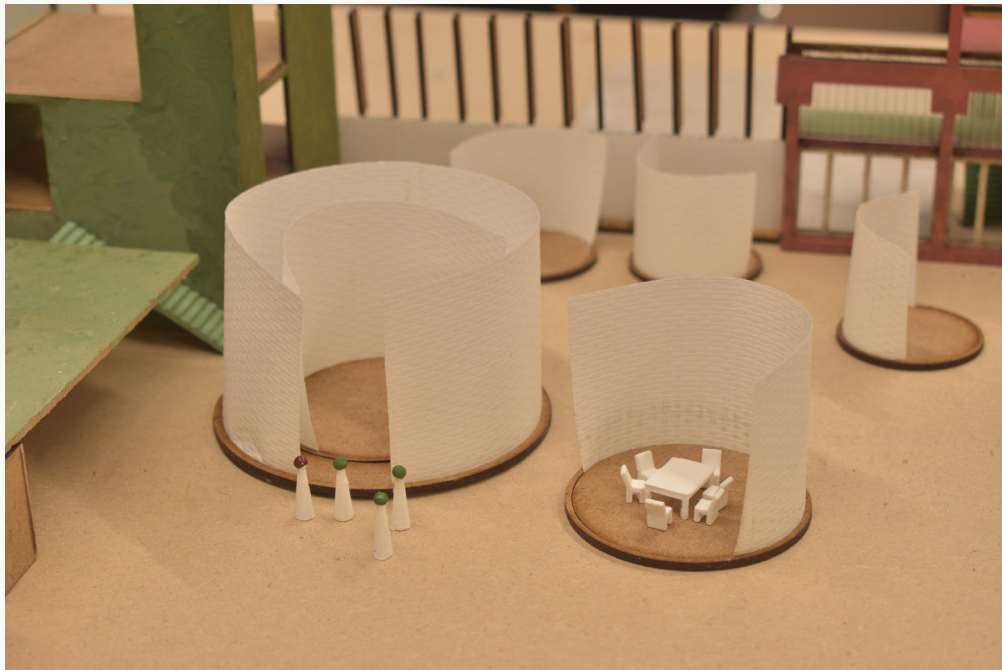






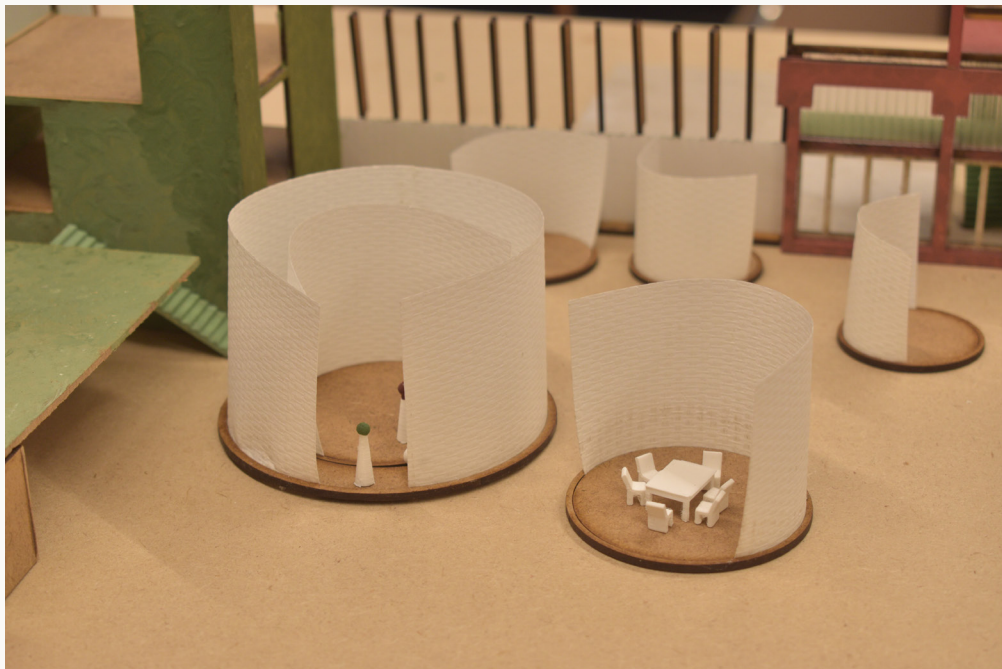




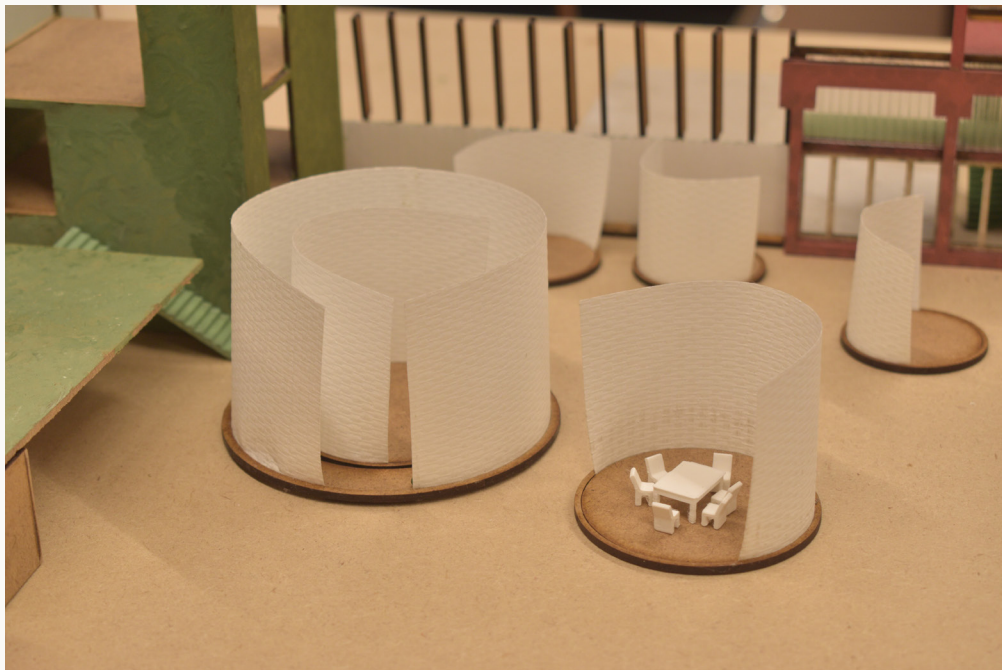




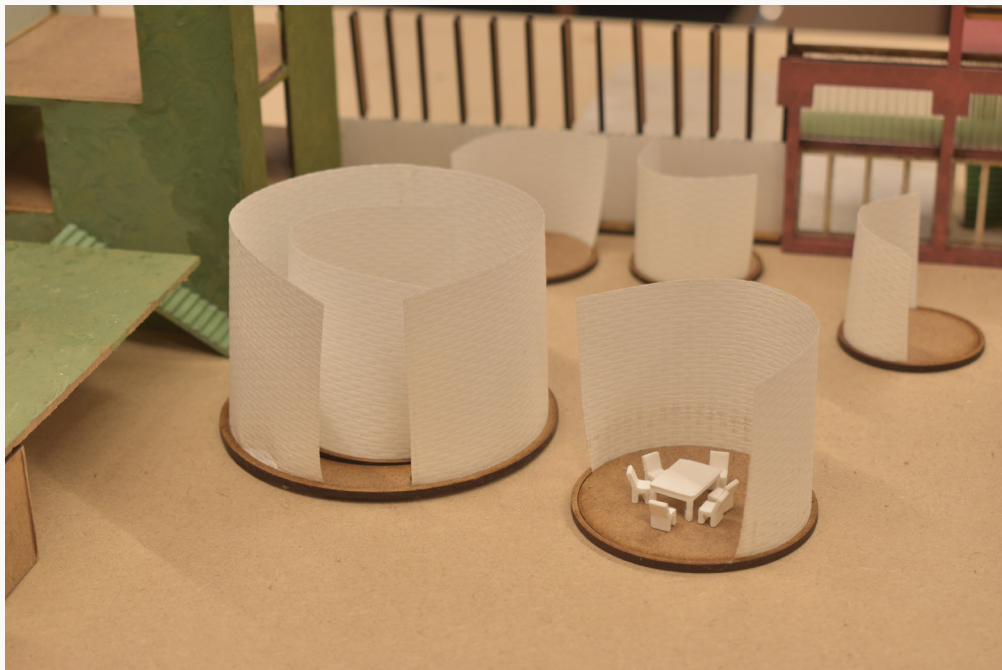


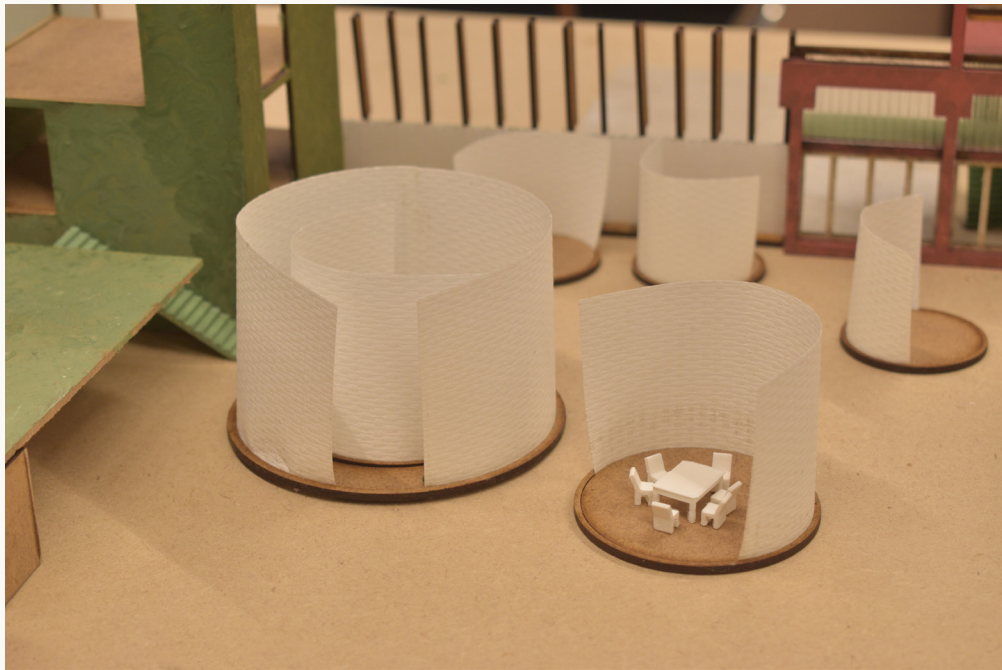


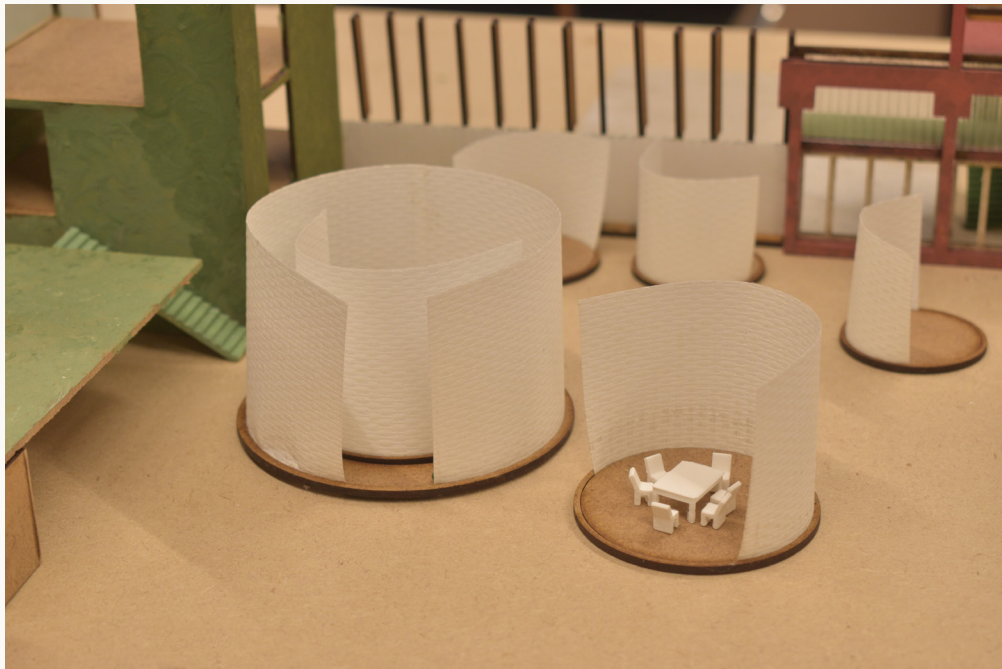




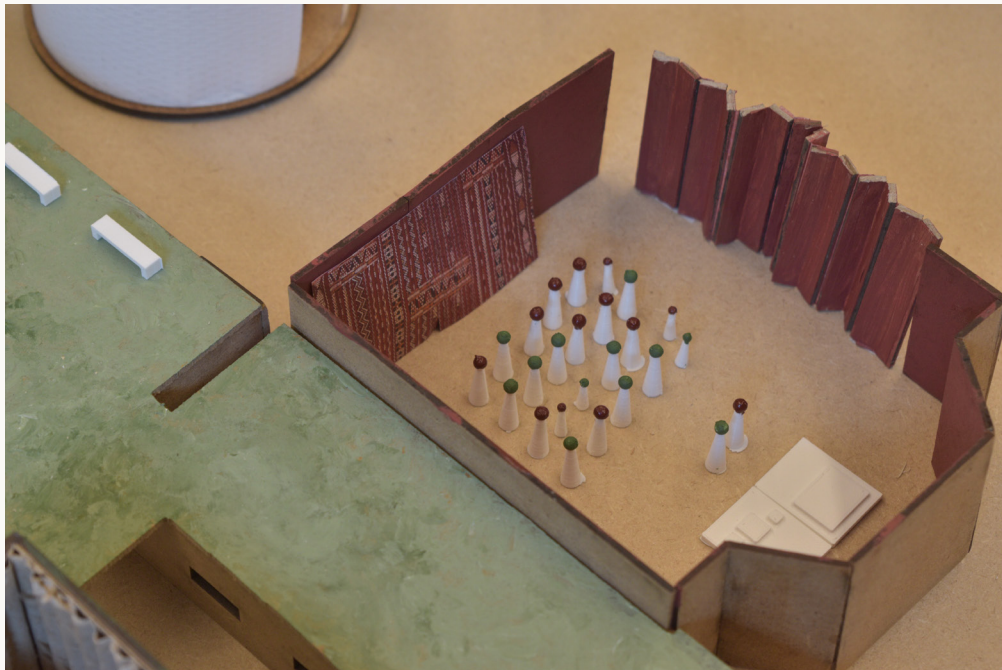




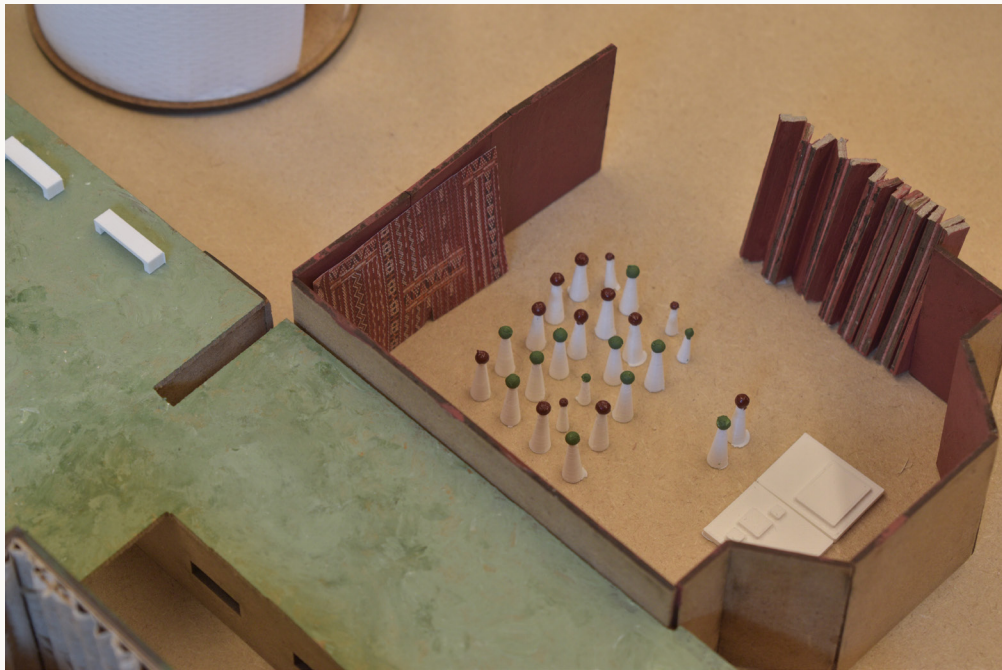


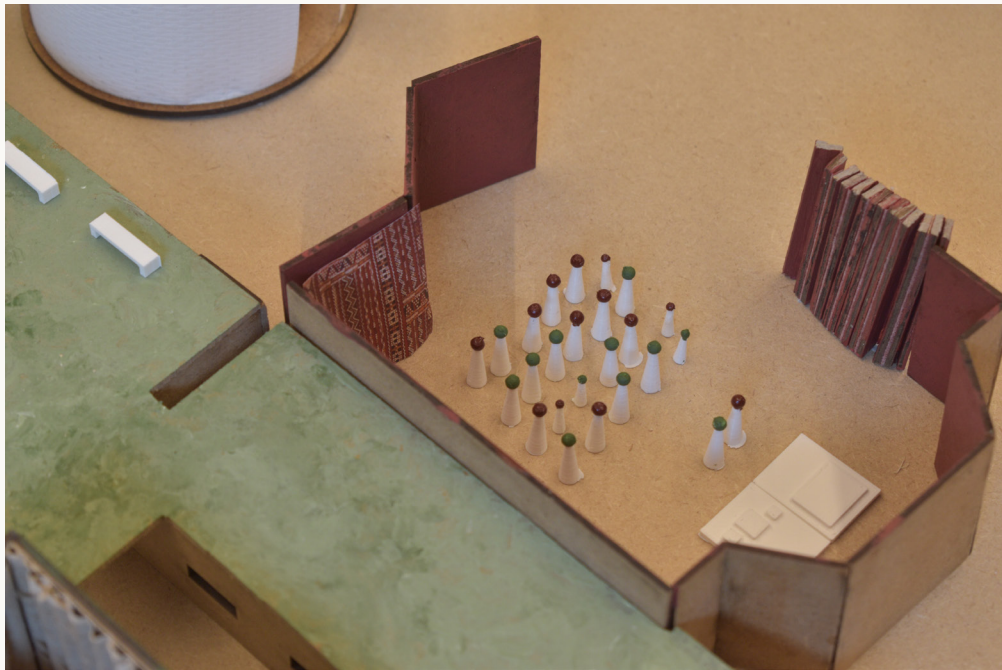


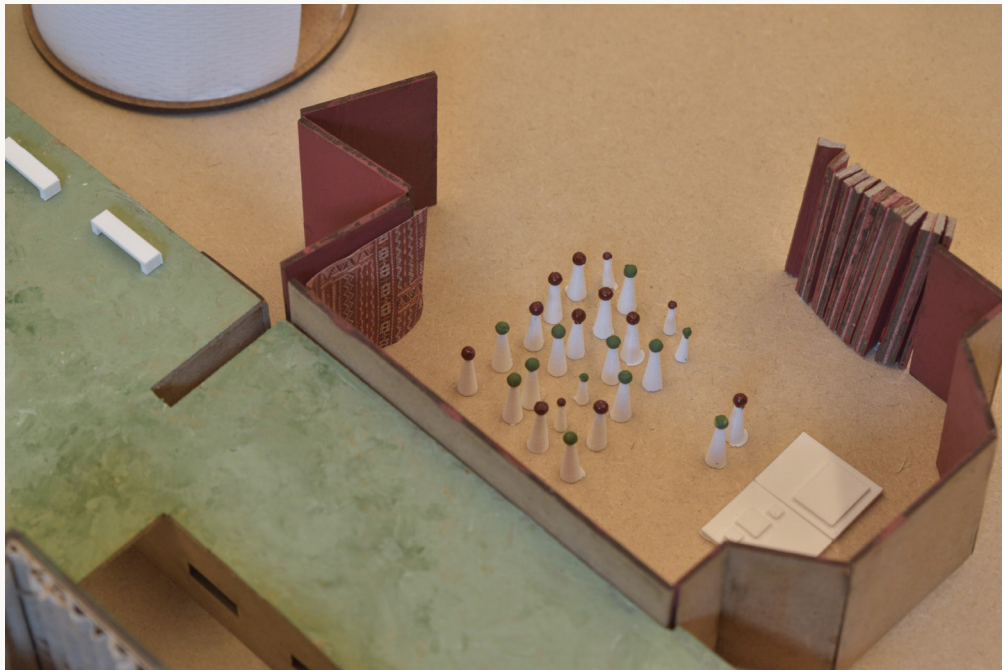


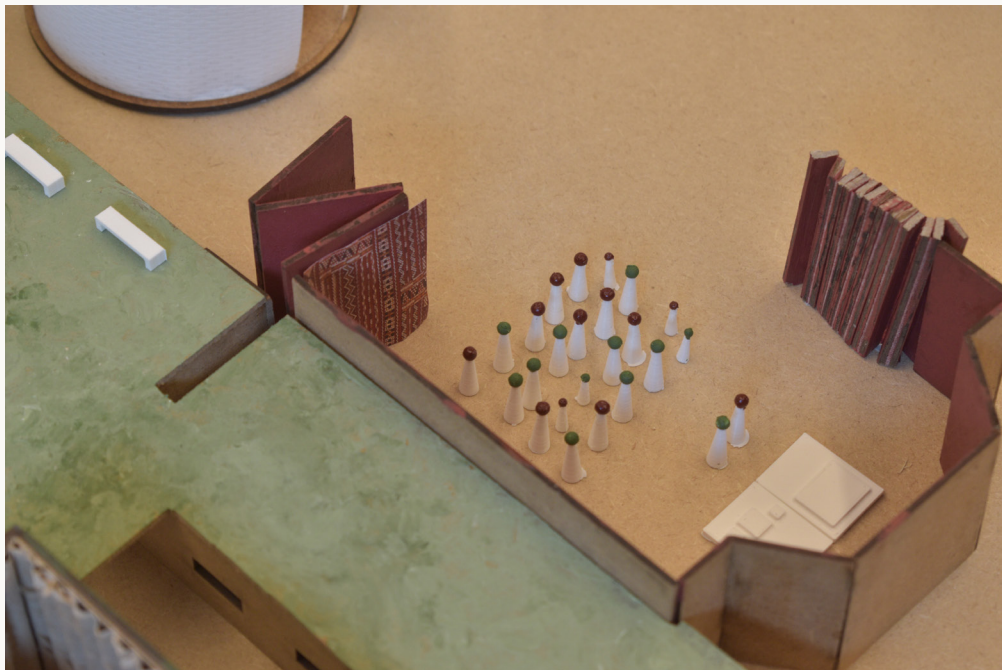












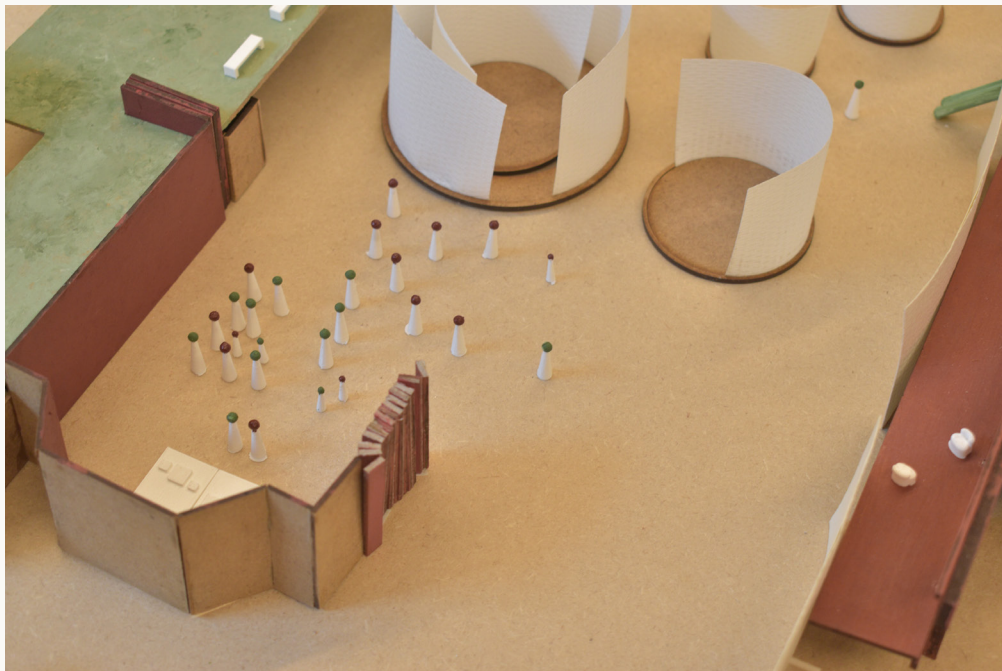










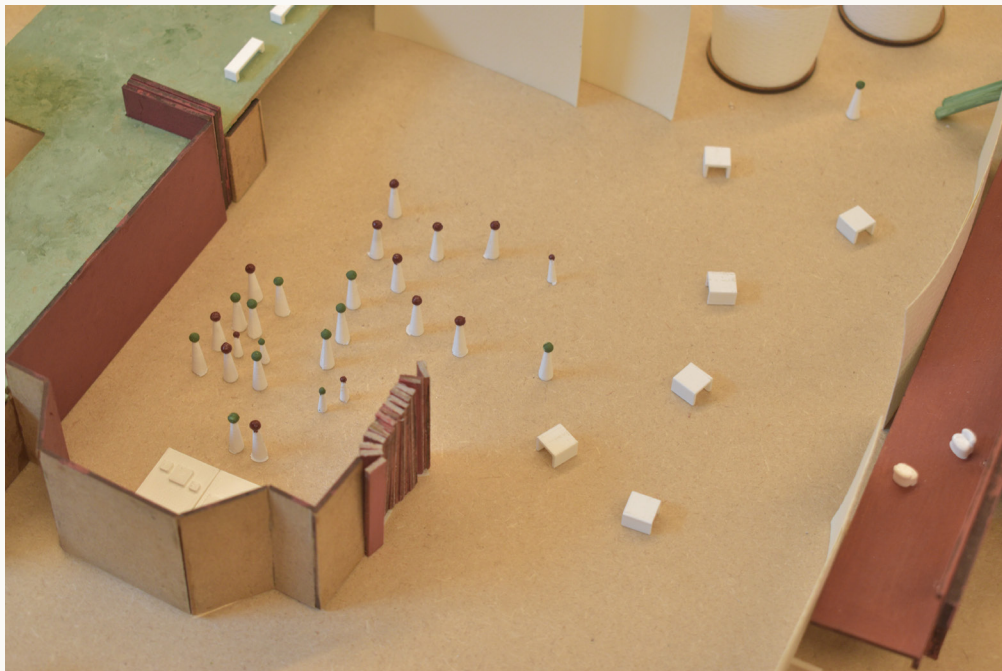


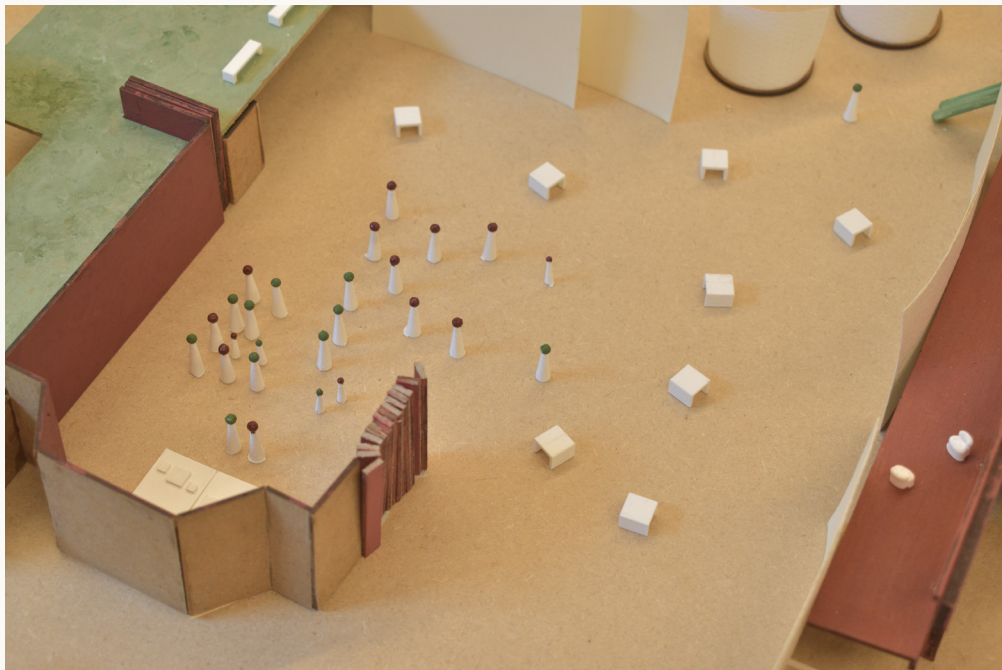












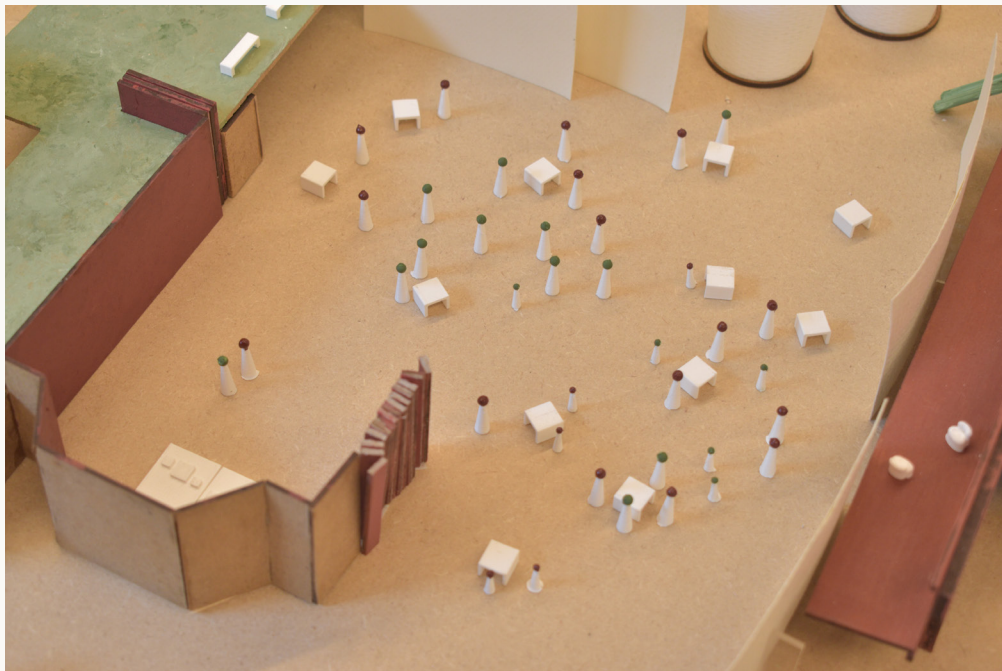






















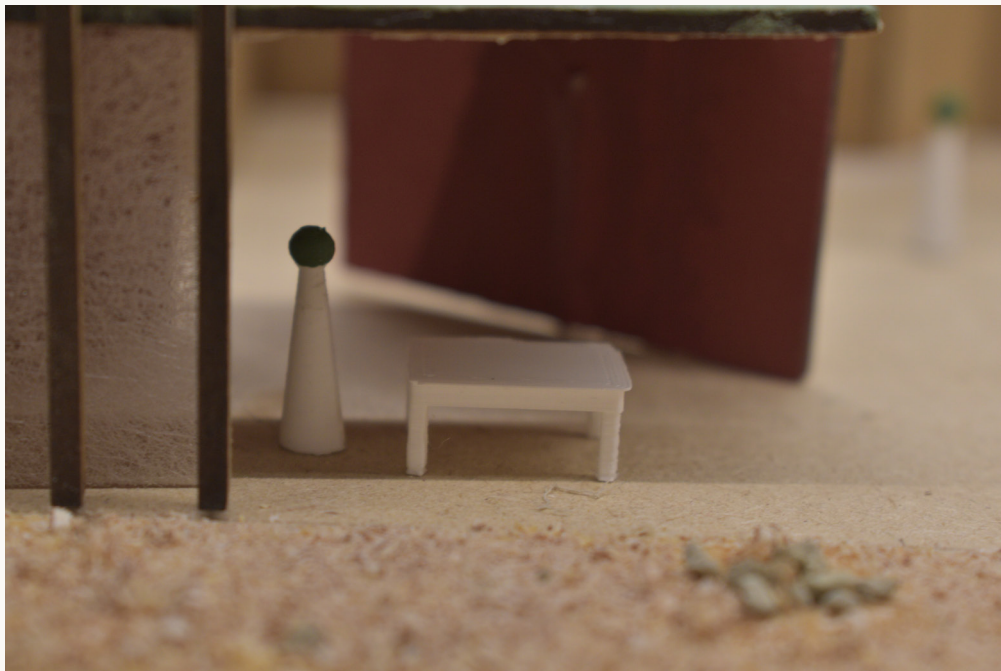


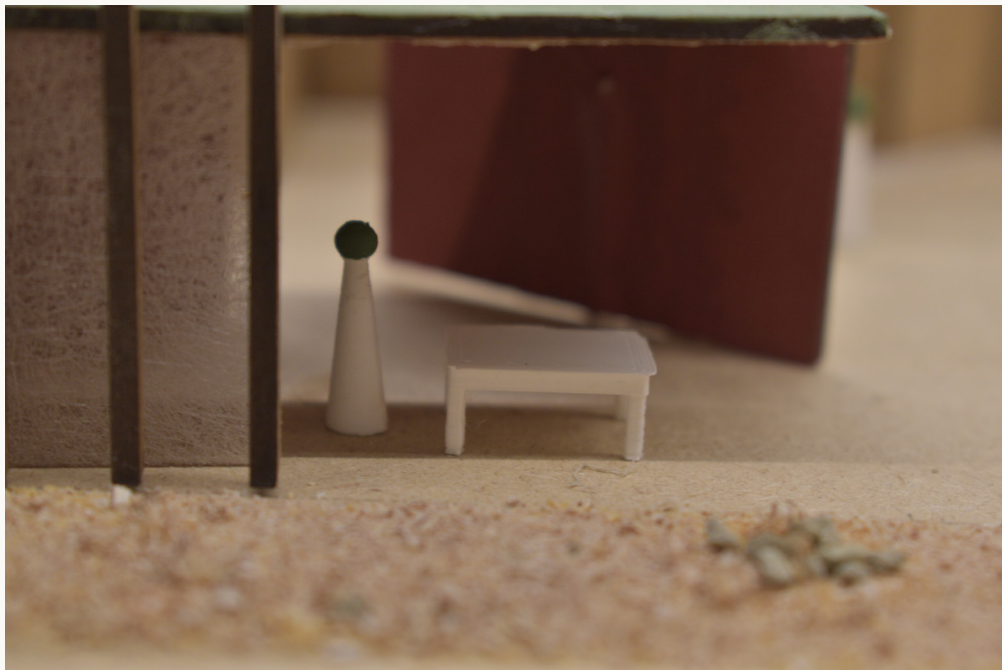


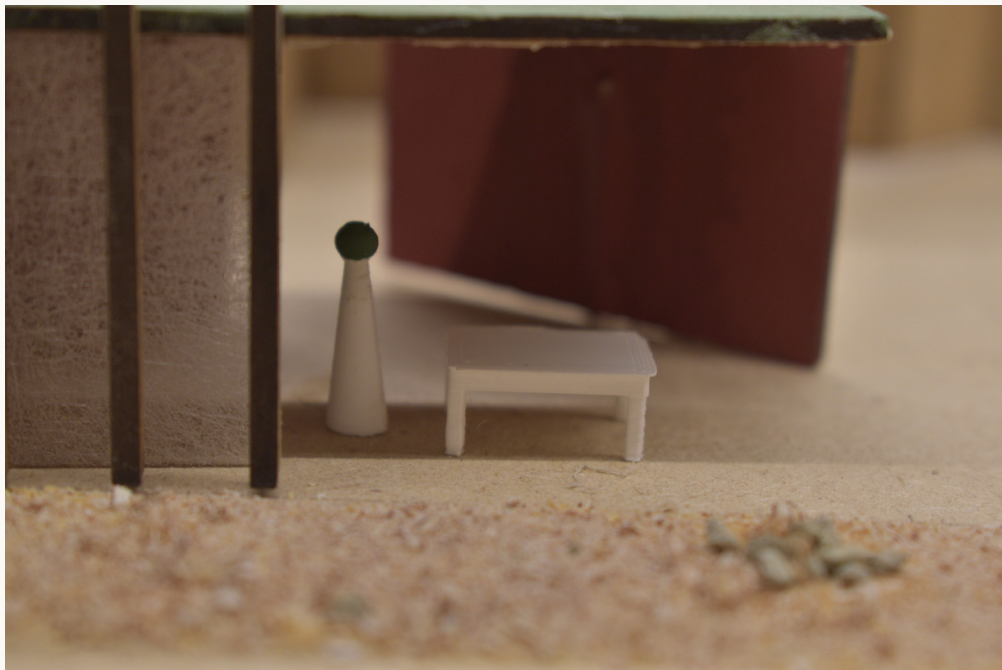


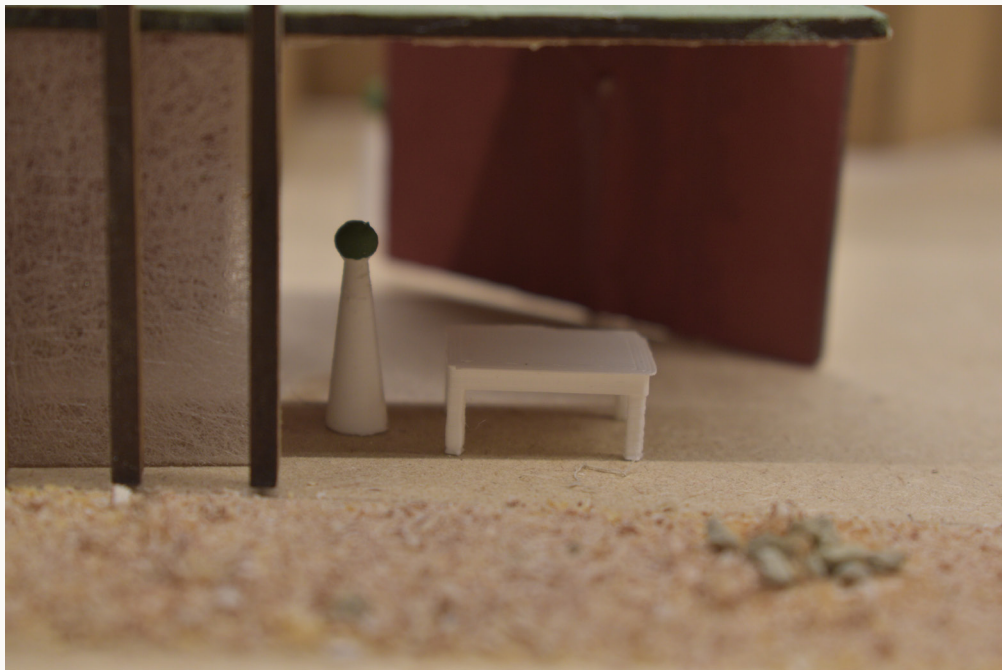
## ***Silouhettes***

*As much as it is about borders and boundaries, this project is also about comforting the bodies that pass through its walls. Comfort is explored through spaces that can be appropriated by people or groups and by incorporating details in the architecture reminiscent of one's culture and ethnicity. Cozy nooks, Moroccan carpets, Turkish tilework etc.*

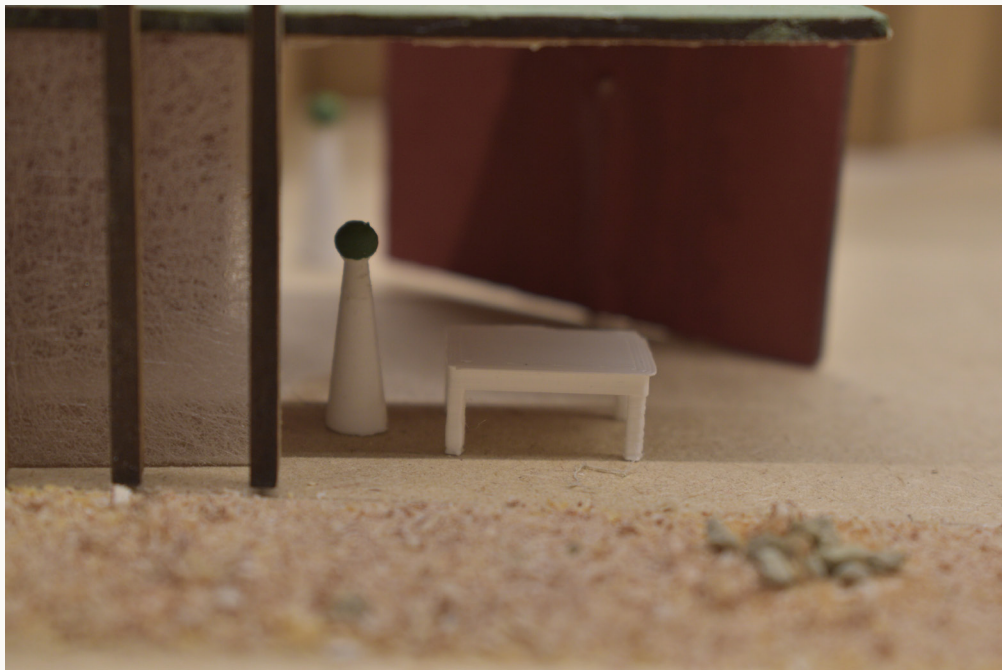


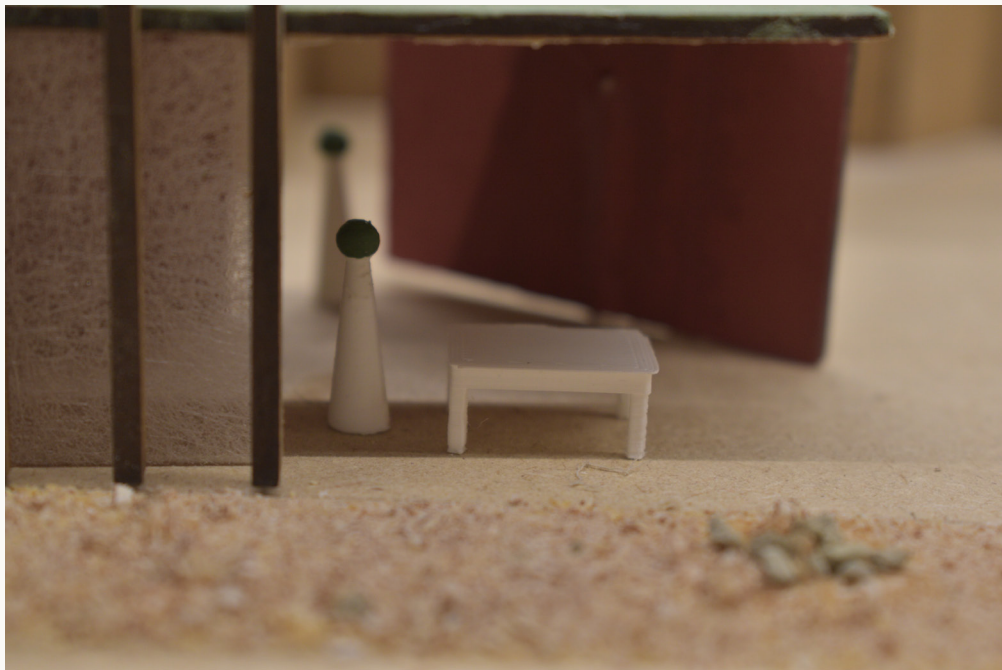


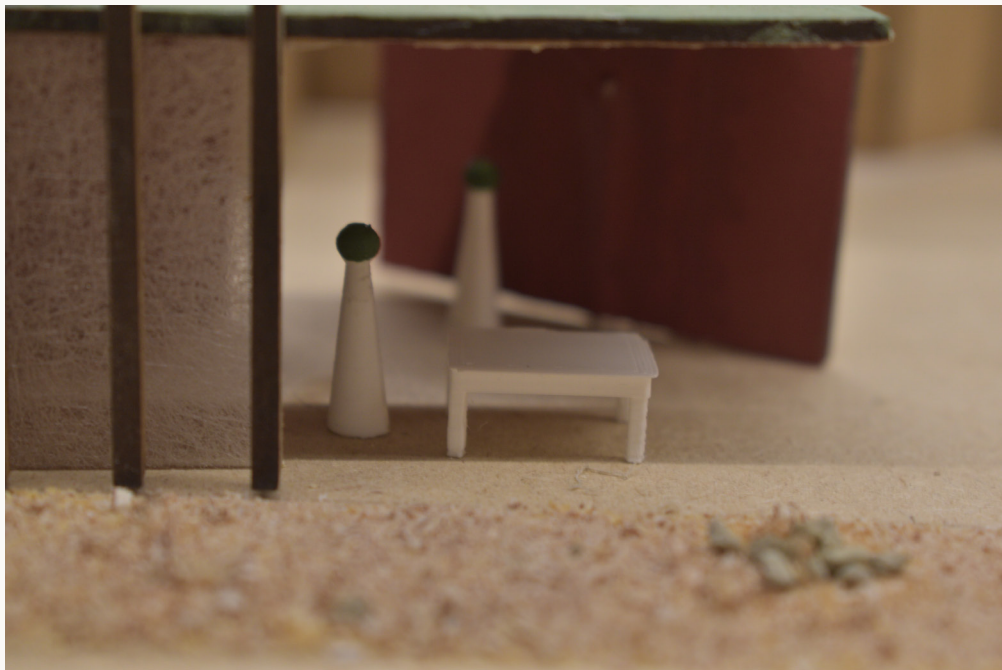


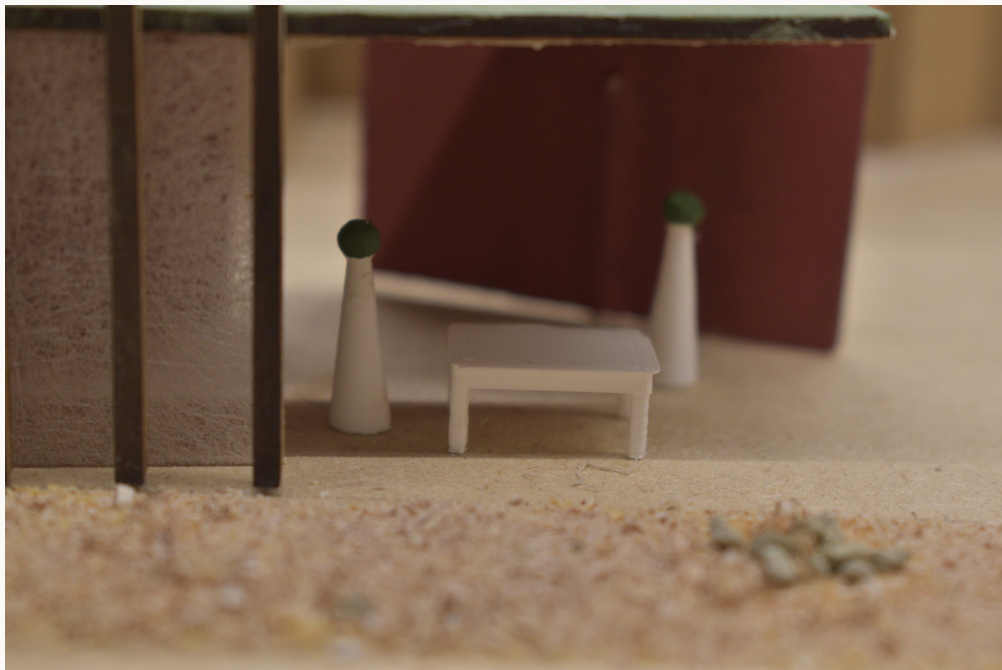


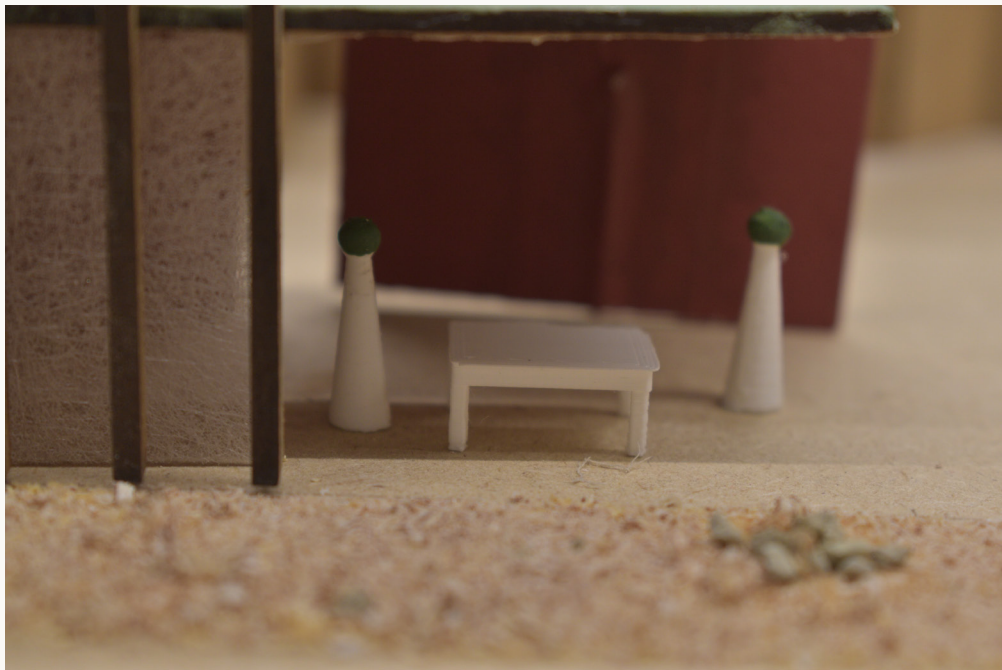




















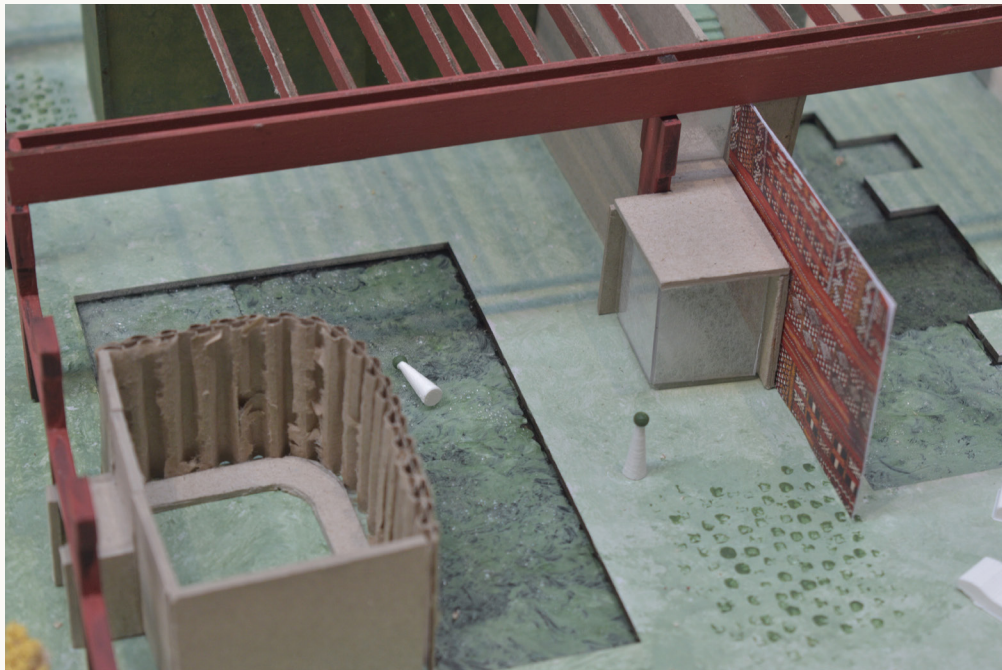


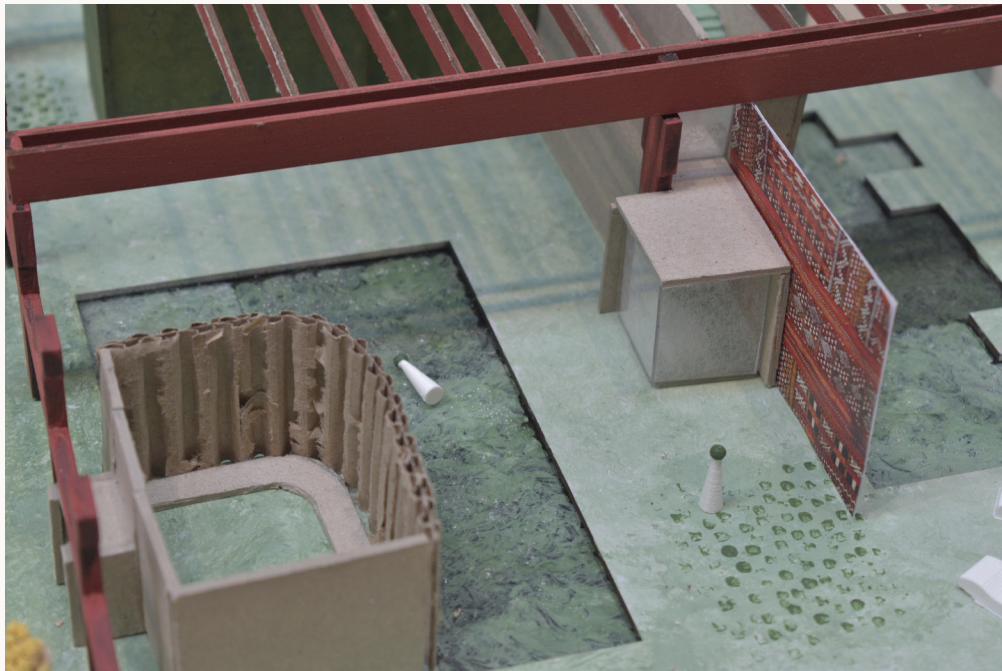


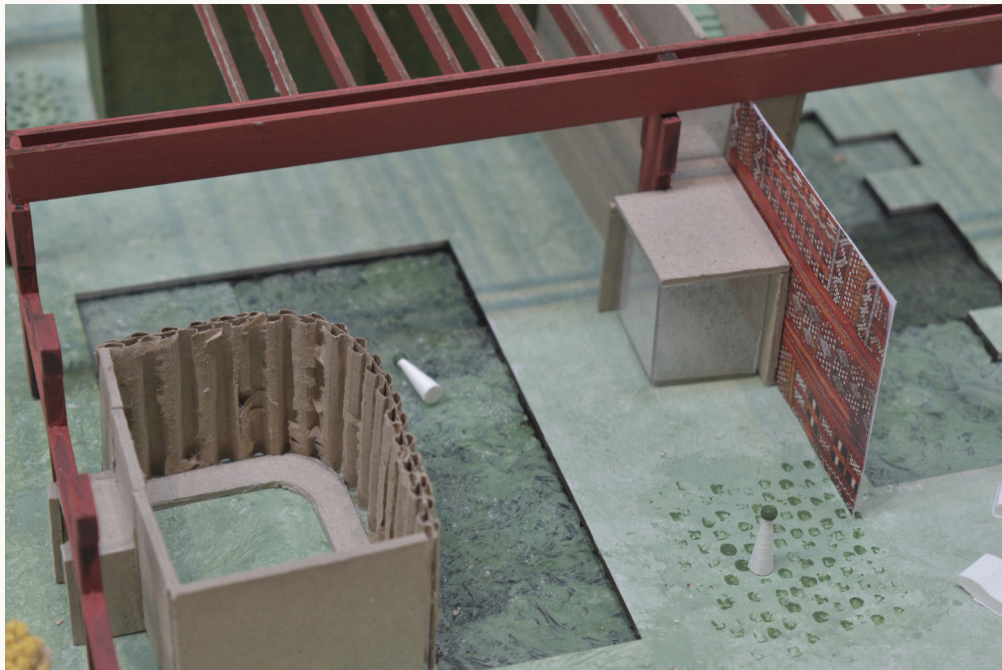




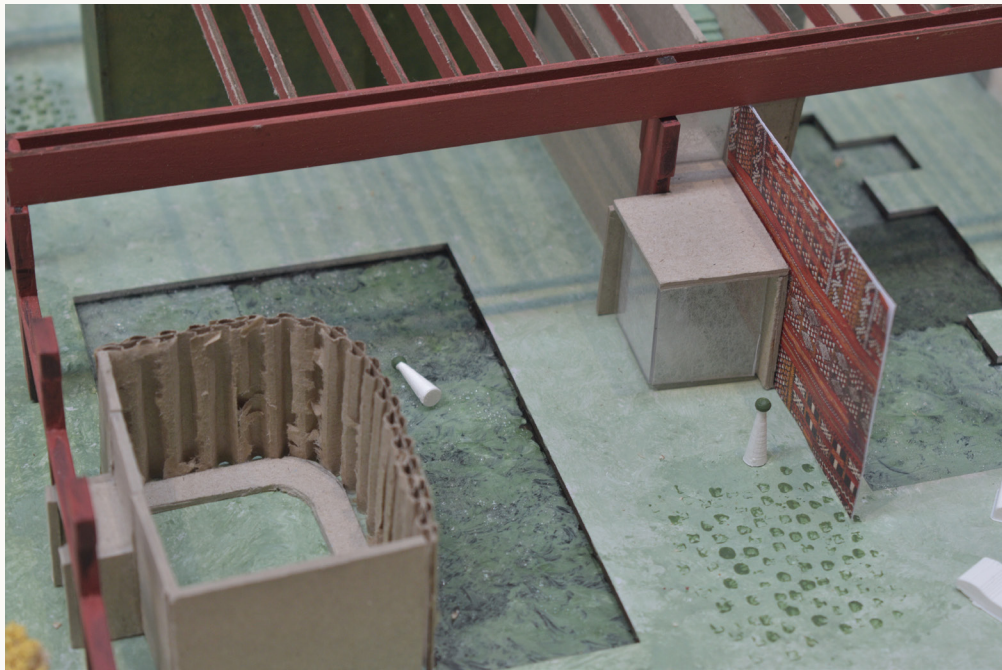




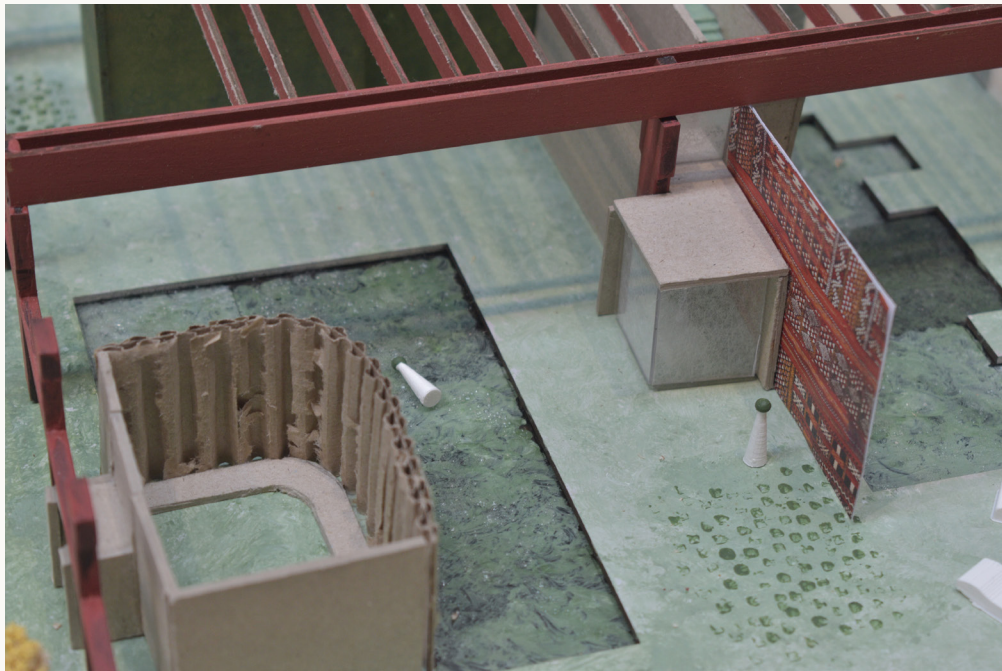


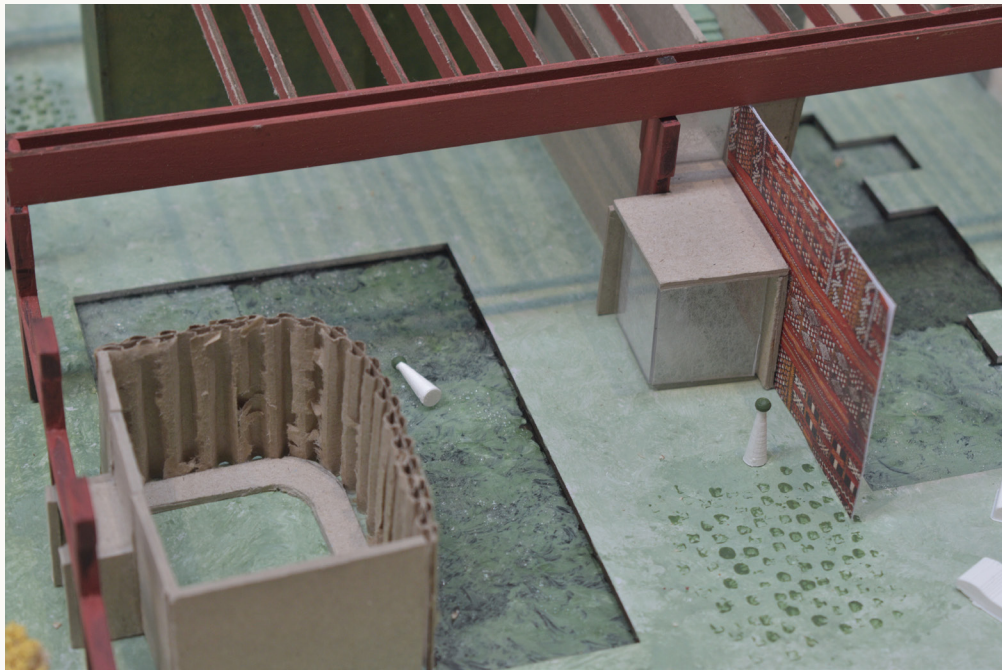


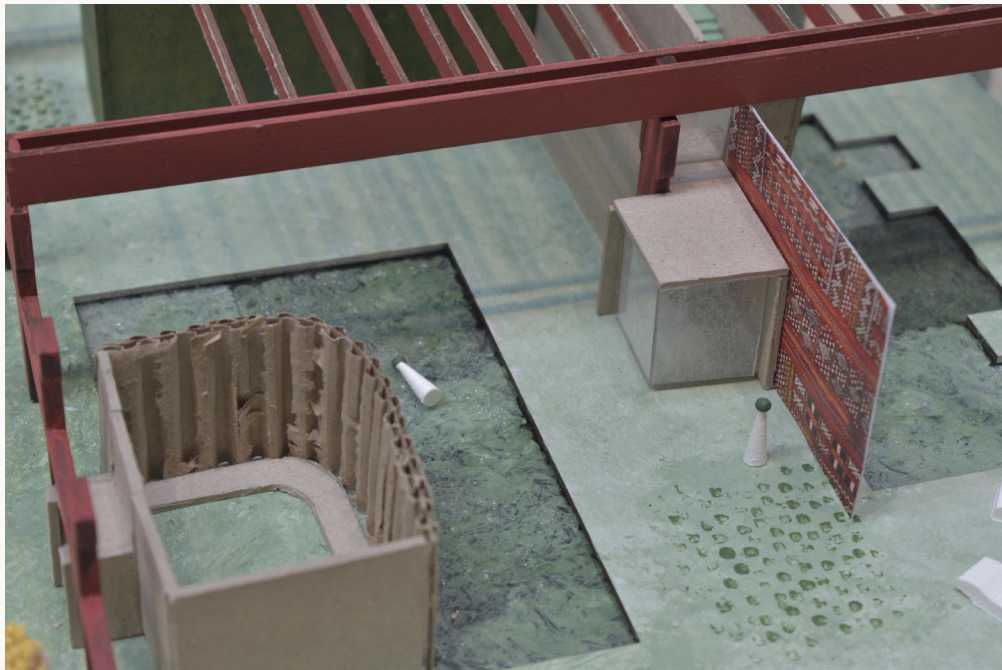


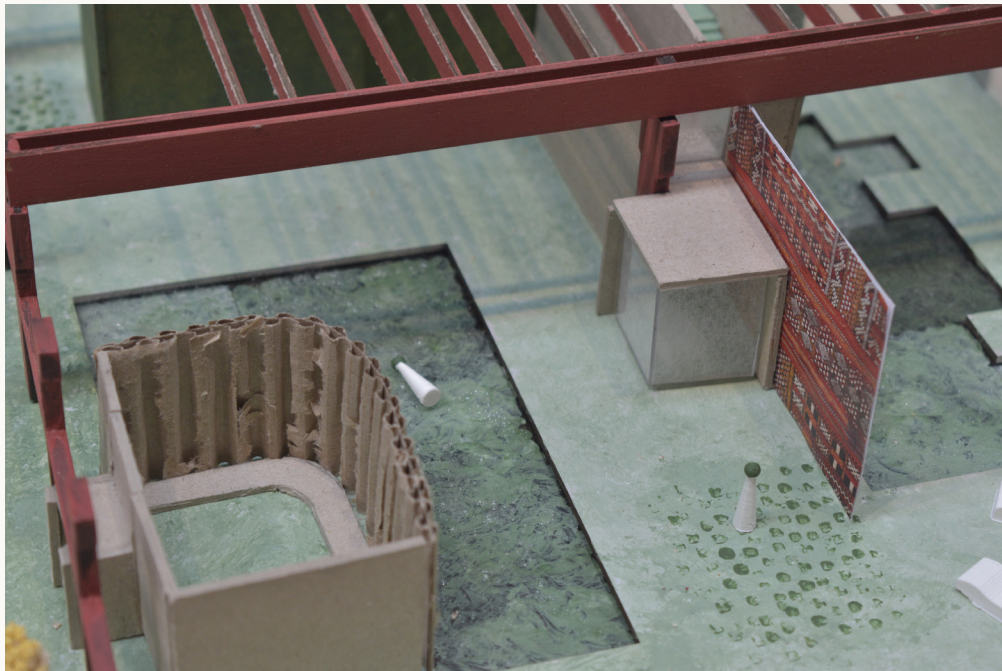












## ***The Street***

*The threshold between the buildings is also an important one, forming fronts and backs. The street can act as an extension to the building or be a passageway between buildings. The plinth level at the entrance and the roof acts as an extension of the center while the street near the Maakfabriek forms a quiet back. The façade can be appropriated by the users and transforms depending on the users' needs.*







































