

RECREATIONAL SPORTS CENTRE

Graduation studio Urban Architecture
Zhenduo Feng
5242134

CONTENTS

1. CITY AND FACTORY
2. GLEAN AND REUSE
3. URBAN PIECES AND INDUSTRIAL FRAGMENTS
4. PUBLIC BUILDING AND COLLECTIVE SPACE
5. CANOPY AND PLAZA
6. TERRACE AND GARDEN



CITY & FACTORY

historical maps

To learn from history, the environment and the site, we made different floorplans whereby we focused on the borders of the Sappi factory and the area between the factory and the city of Maastricht. From the Medieval era till now the site has changed a lot. The site plans show these changes and the figures give an explanation. This series of maps shows the expansion history of the Sappi factory. As you can see it is expanded from the south corner to the north. As the area of Sappi had expanded the infrastructures, water structure and buildings around changed a lot as well.

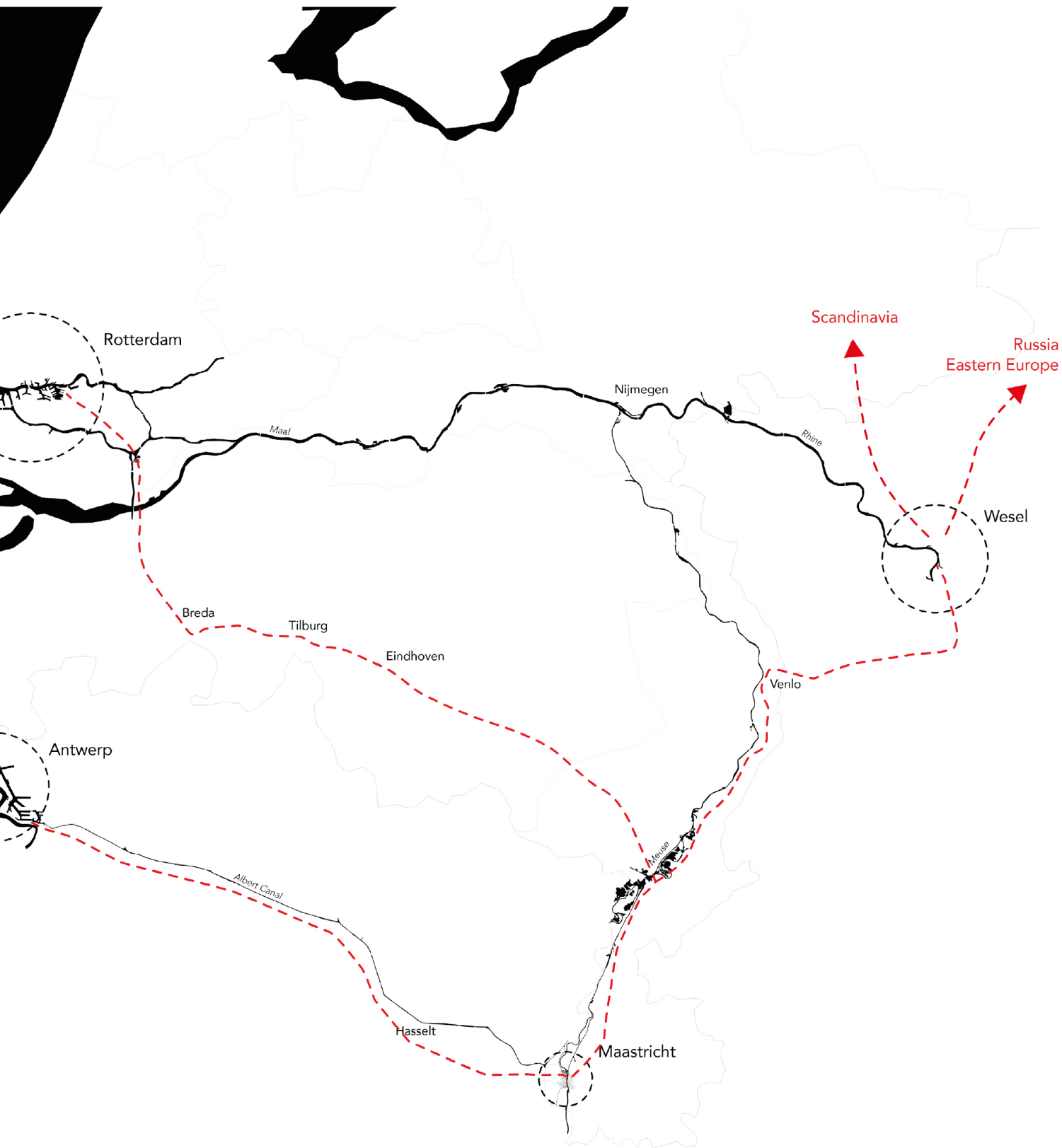




territorial impact map

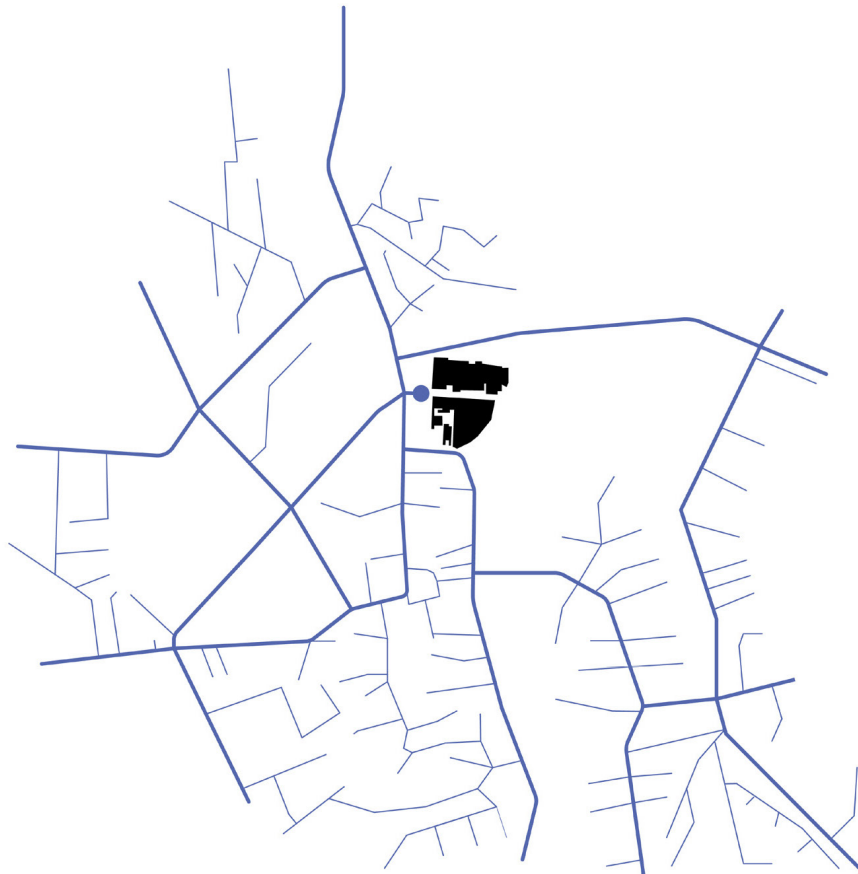
The Sappi factory of Maastricht is part of a worldwide company anchored in the global market of paper making. Therefore, it is part of an important territorial network. In that respect, its location was not chosen randomly. Taking advantage of the Maas River to reach Antwerp and Rotterdam harbors, the factory gets its raw materials (cellulose) by boat from South America, Canada, and Scandinavia. Finished products are shipped by trucks in direction of the Wesel logistic center from where merchandises are sent in Scandinavia, Russia and Eastern Europe. However, the major part of the finished products are exported to United States or Southern Europe via Antwerp and Rotterdam harbors.





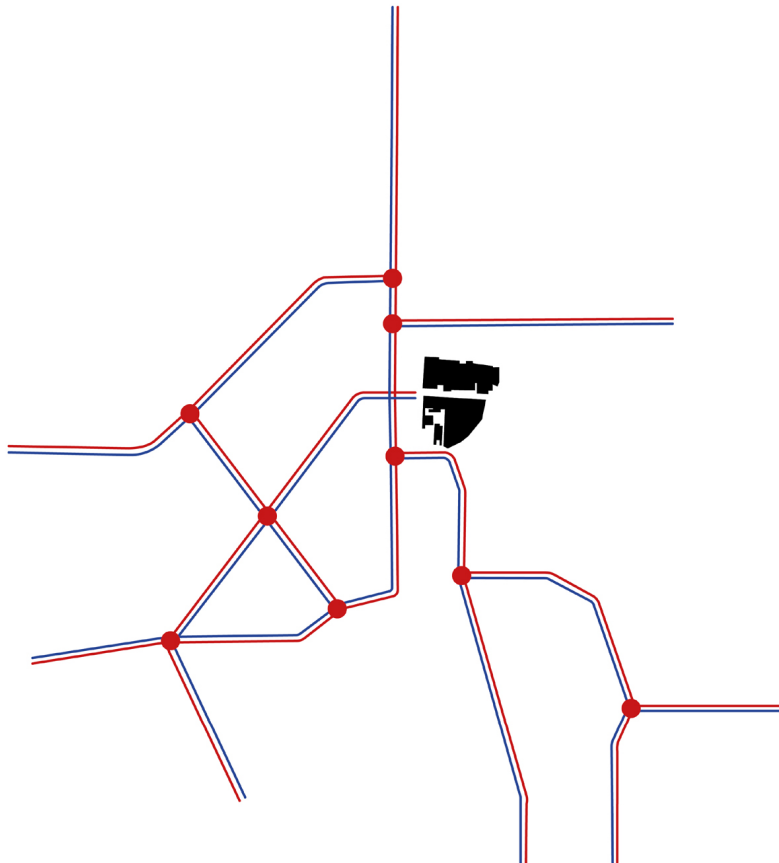
electricity network map

The paper making process requires an important amount of electricity in order to quickly dry the paper. In that respect, the Sappi factory owns a power plant. However, the amount of electricity produced exceeds the needs of the company. Therefore, it has been decided to sell electricity on the global market – which apparently represents an important part of the benefits of the company – to provide energy to surrounding districts.



electricity network map

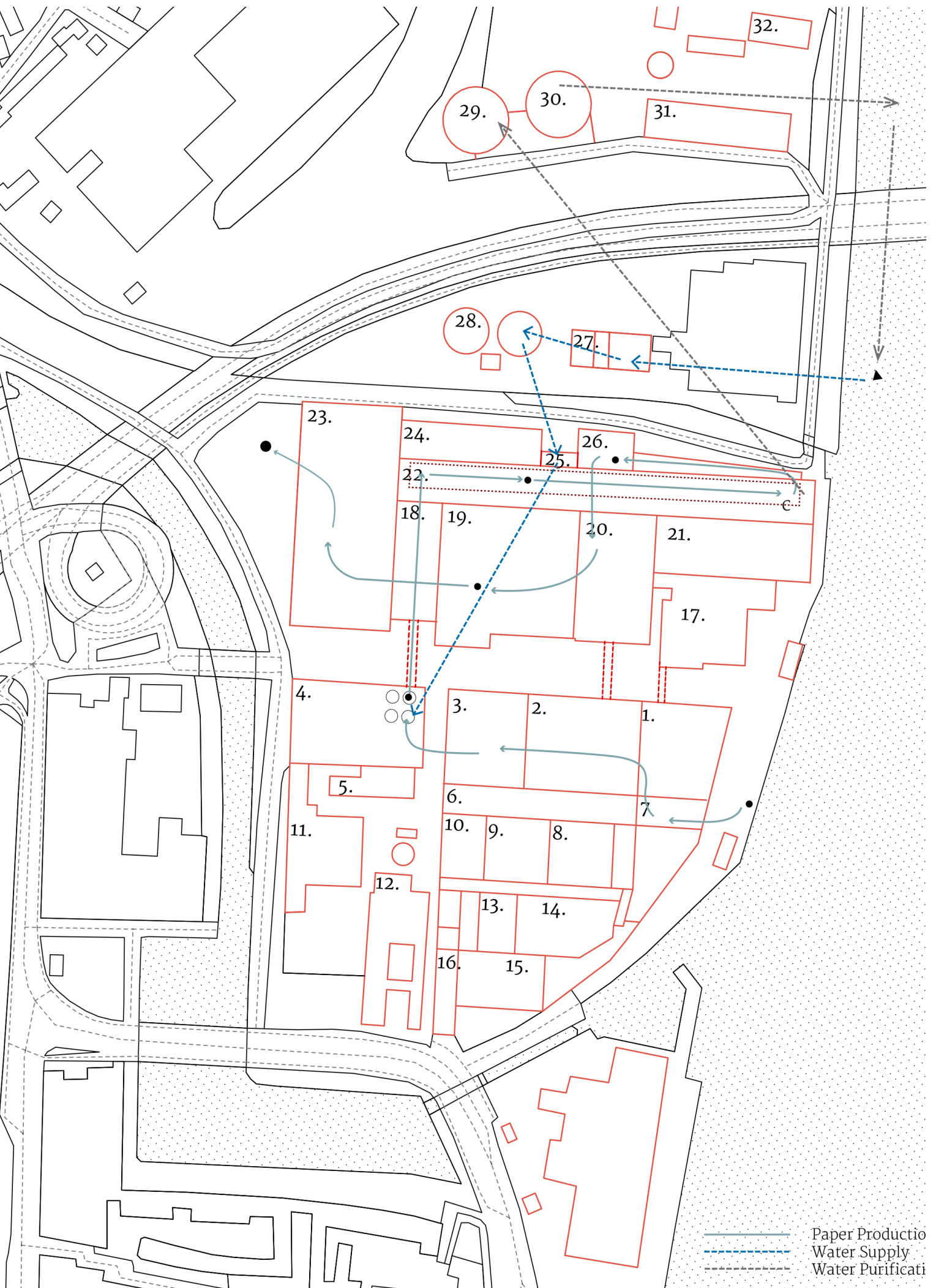
The paper making process requires an important amount of electricity in order to quickly dry the paper. In that respect, the Sappi factory owns a power plant. However, the amount of electricity produced exceeds the needs of the company. Therefore, it has been decided to sell electricity on the global market – which apparently represents an important part of the benefits of the company – to provide energy to surrounding districts.

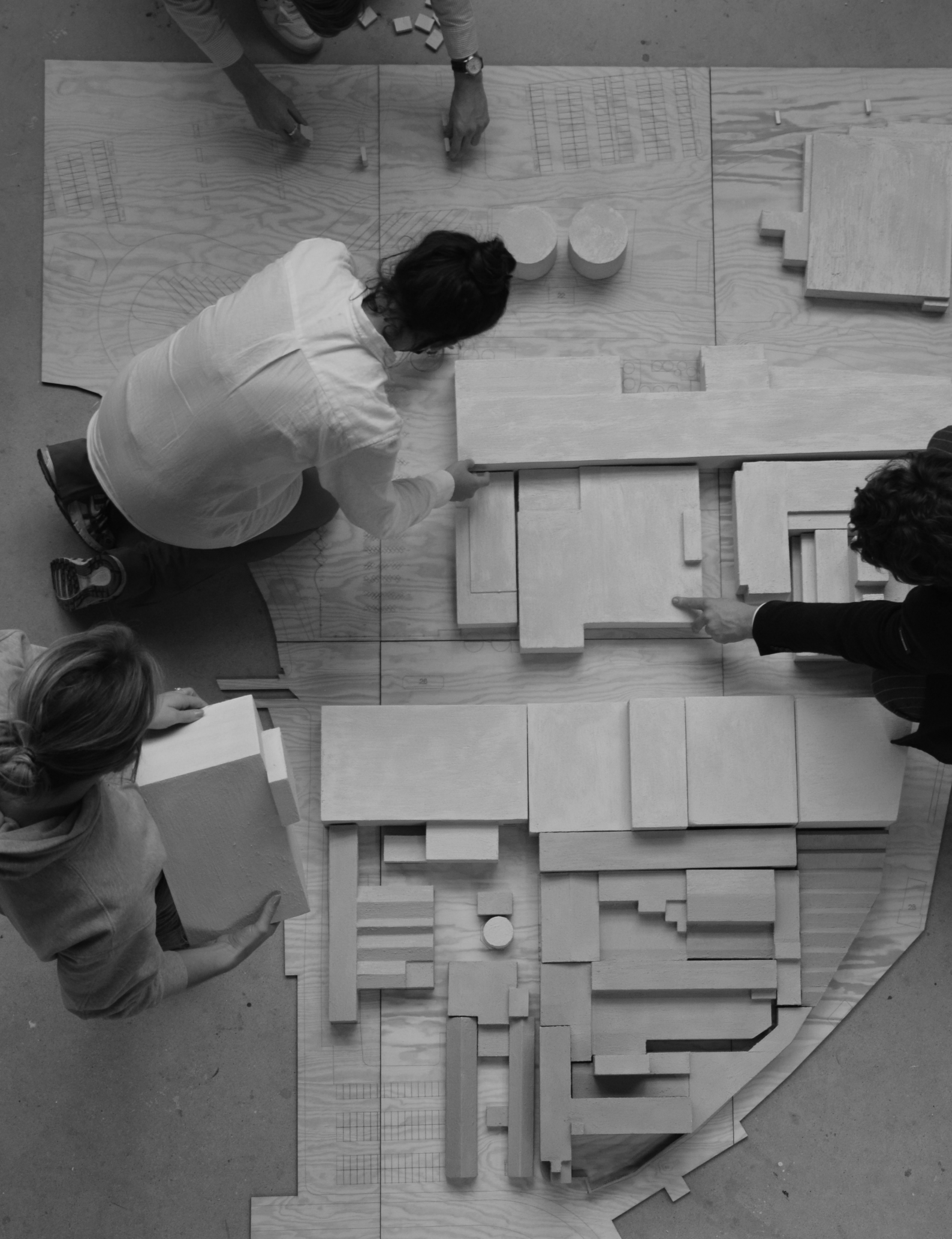


paper process map

As the Sappi mill in Maastricht cannot produce cellulose, the raw material for paper production, this material will be produced at the Sappi mill in Lanaken and brought here via the canal. First, most of the cellulose is stored in old warehouses near the canal. Some of the cellulose will then be added to the pulp machine to produce pre-made pulp, which is further processed and then transported to the paper machine. After processing by the paper machine 6, long rolls of paper will be coated and cut to suit different qualities and uses. Finally, the packages will be transported by truck from the mill to the city.







GLEAN & REUSE

glean

The studio departs from the notion of gleaning as an act and attitude of sustainable urban development. Like the impoverished people who glean the leftovers of crops from a reaped field during the food shortage, we engage with the notion of the glaneur as someone who walks, reads and interprets the city. As architects, we intend to reap and sow pieces of the city, to work with the existing and make use of its resources and potential. The city comes in many pieces and we should work with its leftovers and find the value of the social, cultural and historical change behind.

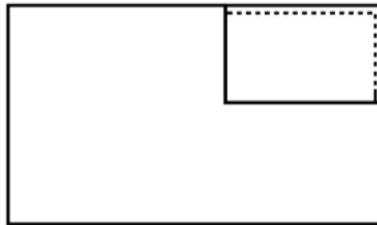


five types of adaptive reuse

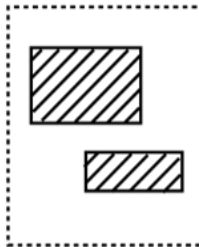
Adaptive reuse perpetuates a continuum of growth and change. Routinely referred to as “transforming an unused or underused building into one that serves a new use, the practice of adaptive reuse is rich and varied and its importance includes not only the reuse of existing structures but also the reuse of materials, transformative interventions, continuation of cultural phenomena through built infrastructure, connections across the fabric of time and space and preservation of memory — all of which result in densely woven narratives of the built environment with adaptive reuse as their tool.



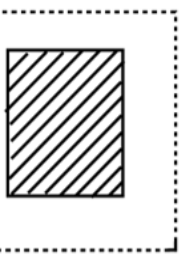
SHELL



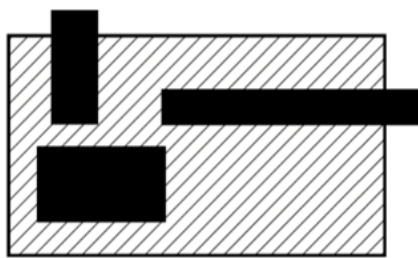
SEMI-RUIN



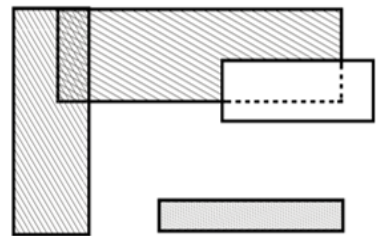
FRAGMENT



MENT



RELIC

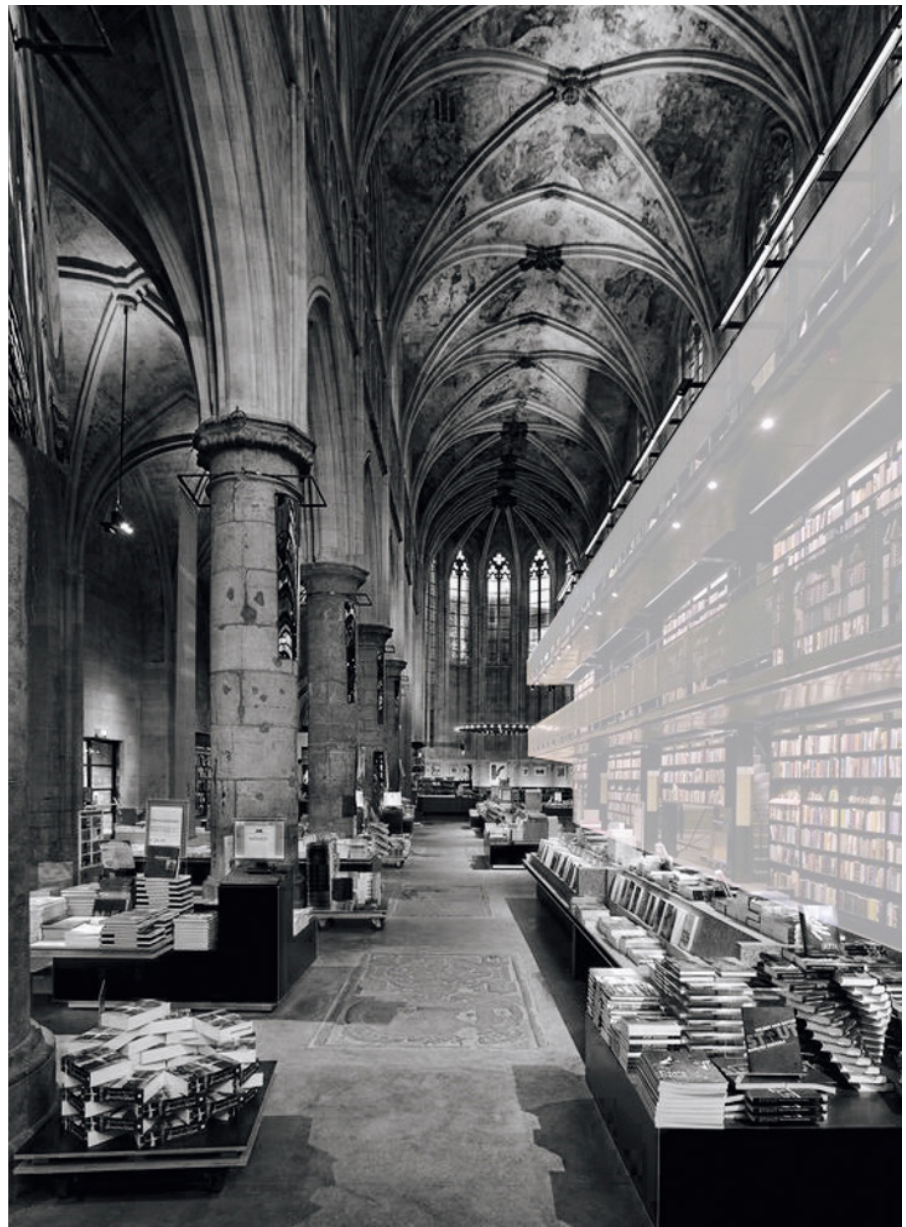


GROUP

adaptive reuse in Maastricht - shell

The shell means the main space and structure of the old building are remained and a new construction is added to the interior space. Like this Dominicanen Bookstore, which used to be a church, a new steel structure is hosted in the interior space to meet the new function.





adaptive reuse in Maastricht - semi-ruin

The semi ruin means part of the building was destroyed. As this historical centre of Limburg has shown, parts of the old monastery were ruined due to some historical reasons. The new concrete structure and glazing faced of the inside are built to fit the functions of archive and display.





adaptive reuse in Maastricht - fragment

Fragment means make use of the most valuable part of the existing building, the Lumiere cinema was the power station of sphix factory. Due to the durability of different structures, the steel construction have remained to be the part of new restaurant area.





adaptive reuse in Maastricht - relic

Relic means the pieces old building could be a catalyst for new construction. The relic of the old defensive construction integrates into the new shop perfectly. The arch of it provide a spaces for people to short gathering and have a harmony dialogue with the alley.



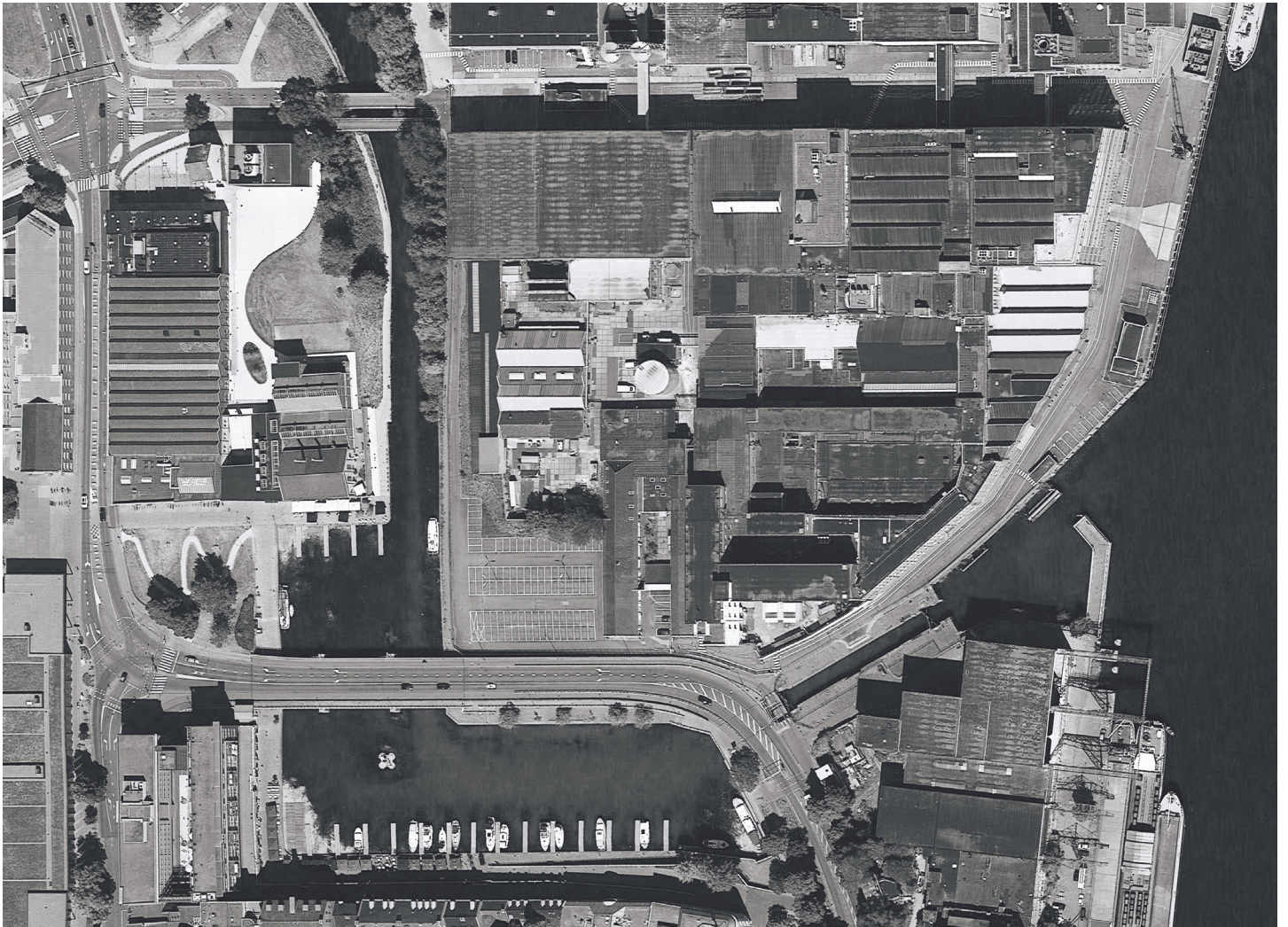




U R B A N P I E C E S &
I N D U S T R I A L F R A G M E N T S

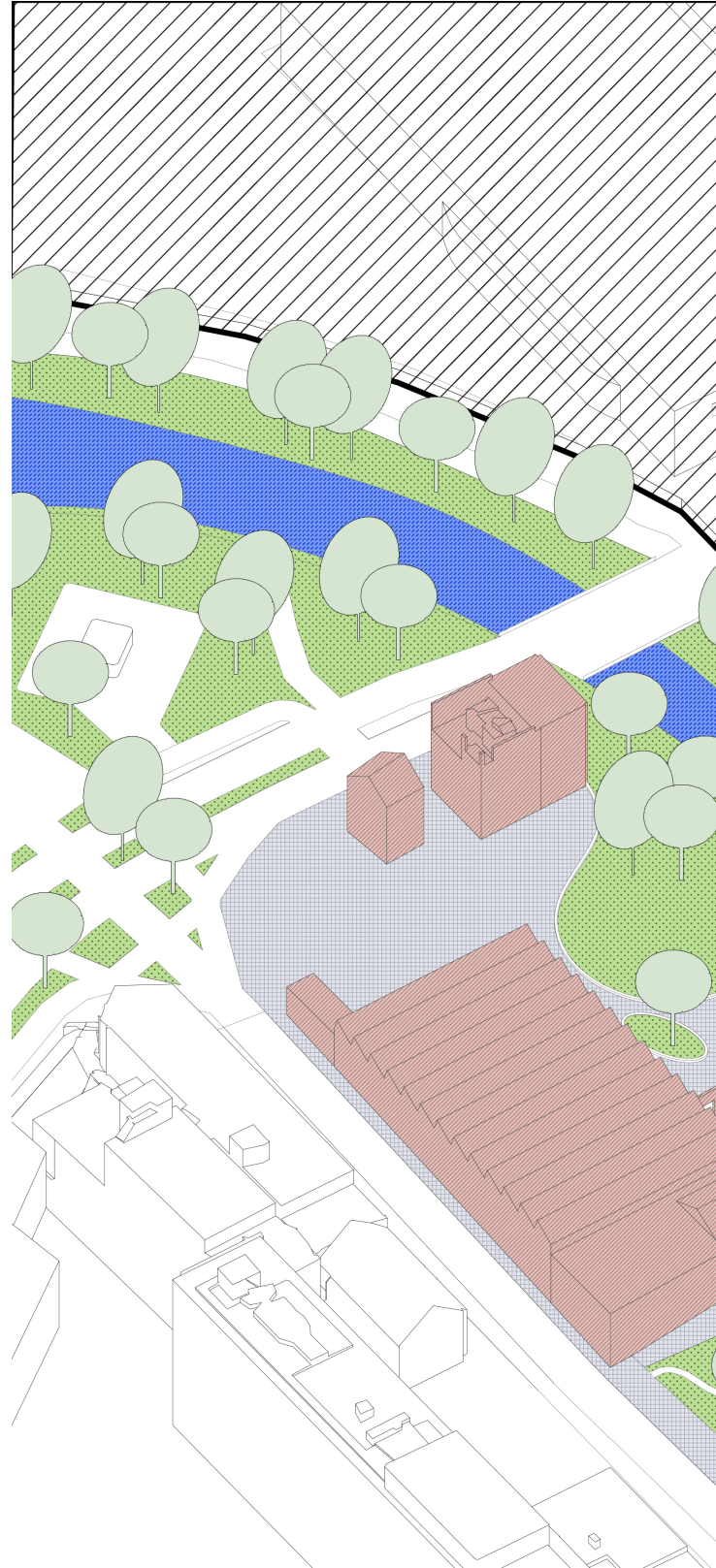
city of pieces

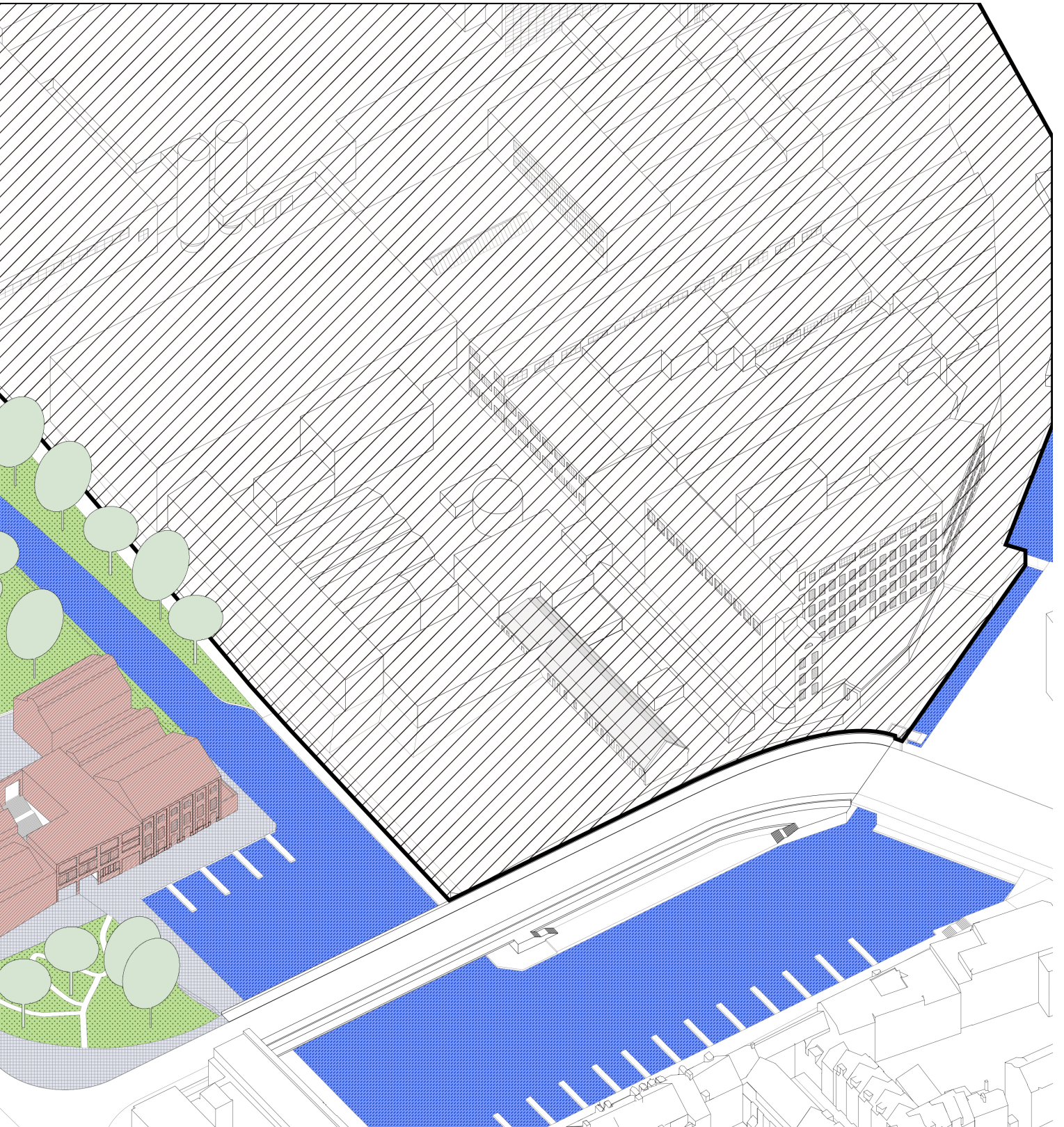
As the city is a man-made landscape made up of many fragments, harvesting and seeding the city's pieces and using the leftovers is the most sustainable way to add new value to the urban development. In addition, the site is located on a piece of land on the edge of the inner city of Maastricht. It is adjacent to the Maas River and features components commonly seen on the outskirts of cities, such as dilapidated buildings, shrinking industries, and incomplete infrastructure, which is not only challenging but also offers rich urban elements.



urban pieces

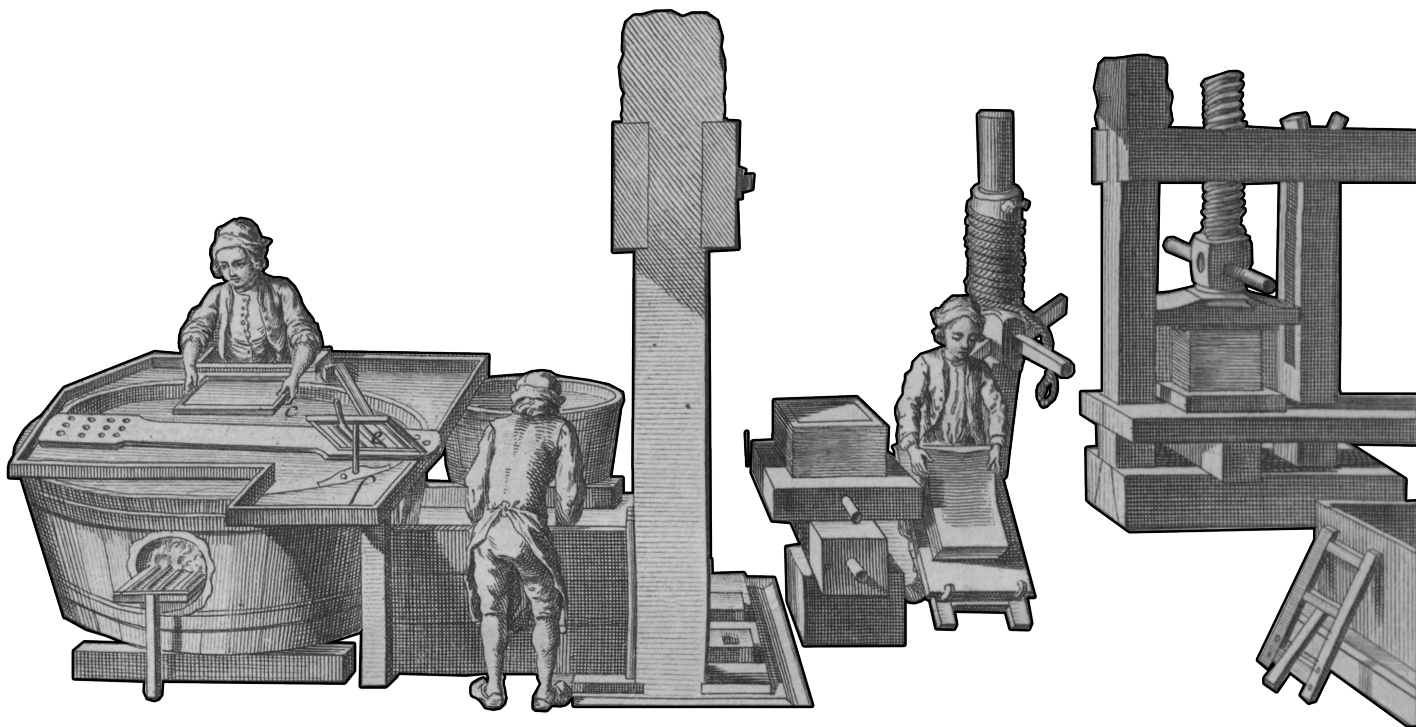
The western half of it is bounded by the Bassin, an unused inland harbor and there are diverse urban pieces, like bars, shops, cinemas, and natural landscapes, across the Bassin, which make this part of the factory become a core area for the new urban plan to connect the inner industrial island and the city context. And there are two new buildings in this area responding to different urban pieces. The east half is adjacent to the Maas River. Therefore, we decide to make it become a place to present the culture of the factory and attract the people from the city.

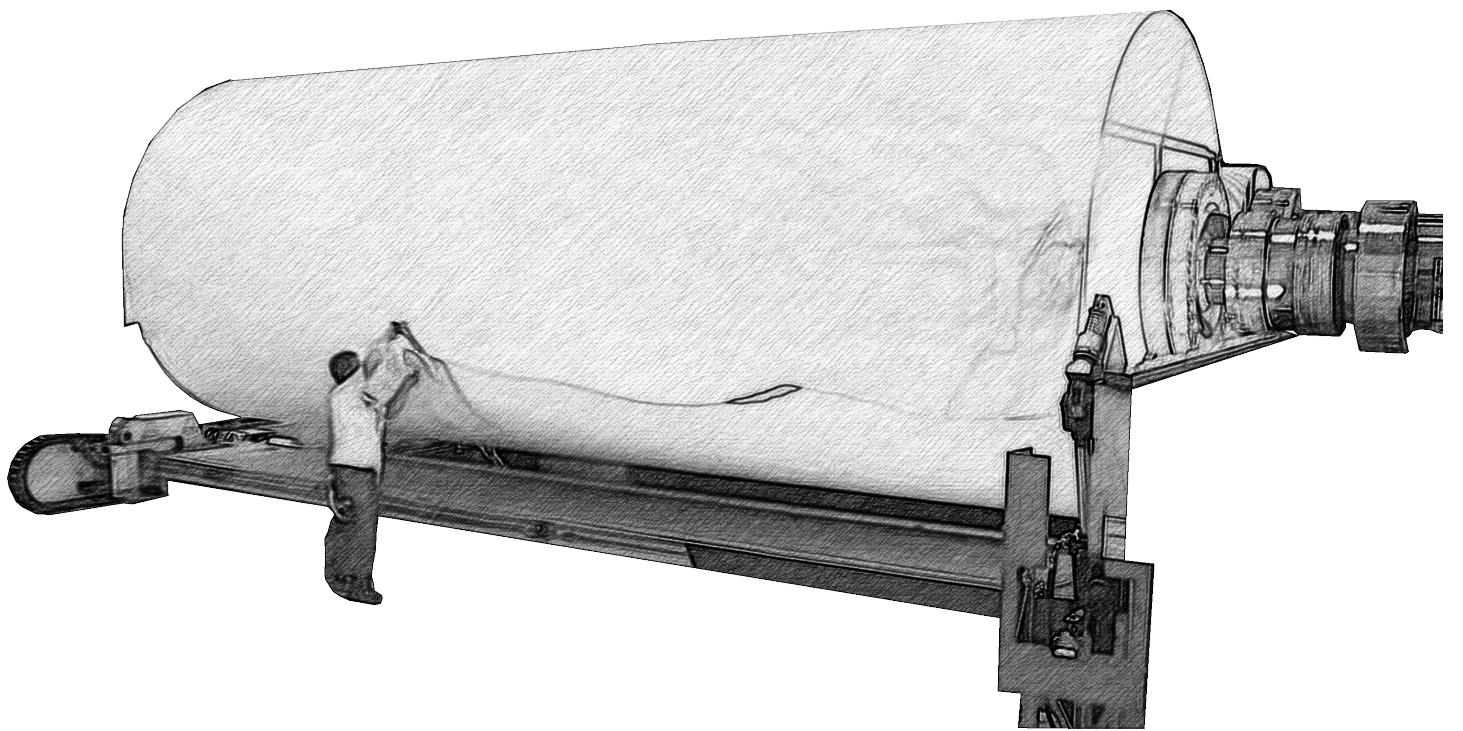




industrial fragments - scale

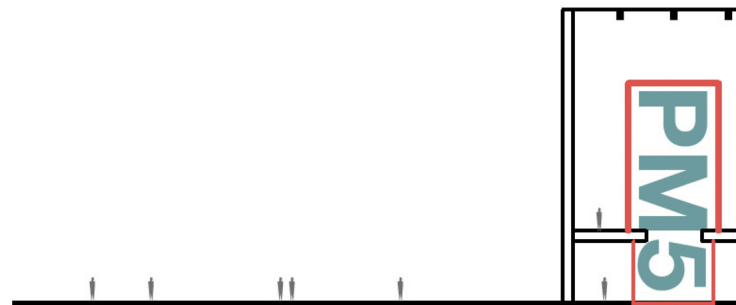
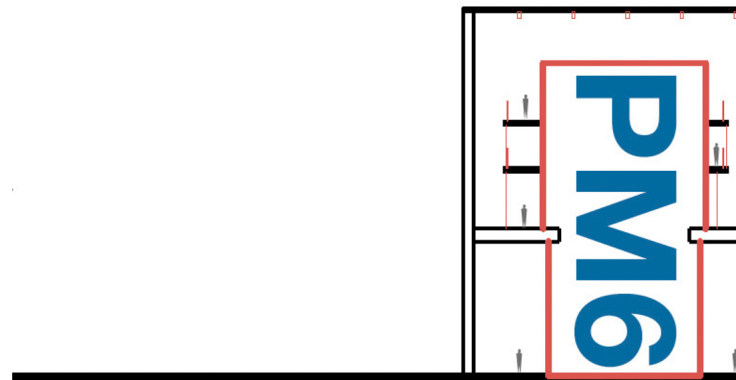
The western half of it is bounded by the Bassin, an unused inland harbor and there are diverse urban pieces, like bars, shops, cinemas, and natural landscapes, across the Bassin, which make this part of the factory become a core area for the new urban plan to connect the inner industrial island and the city context. And there are two new buildings in this area responding to different urban pieces. The east half is adjacent to the Maas River. Therefore, we decide to make it become a place to present the culture of the factory and attract the people from the city.

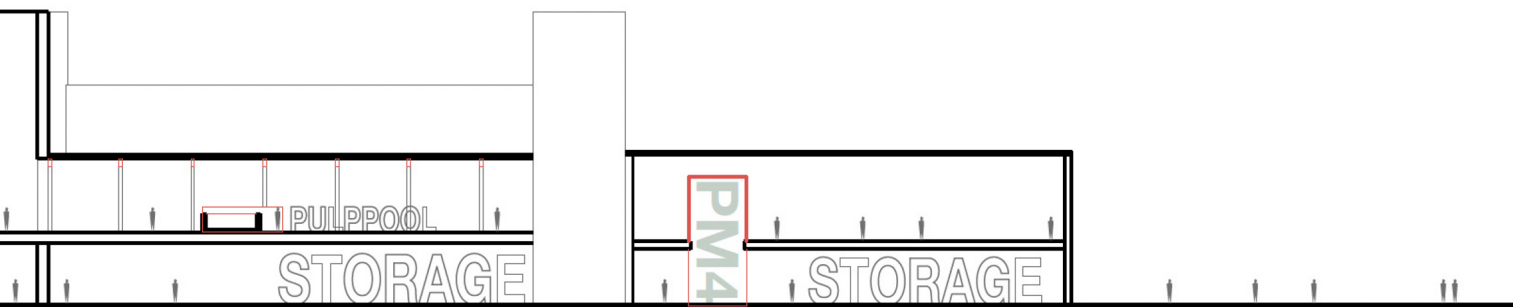
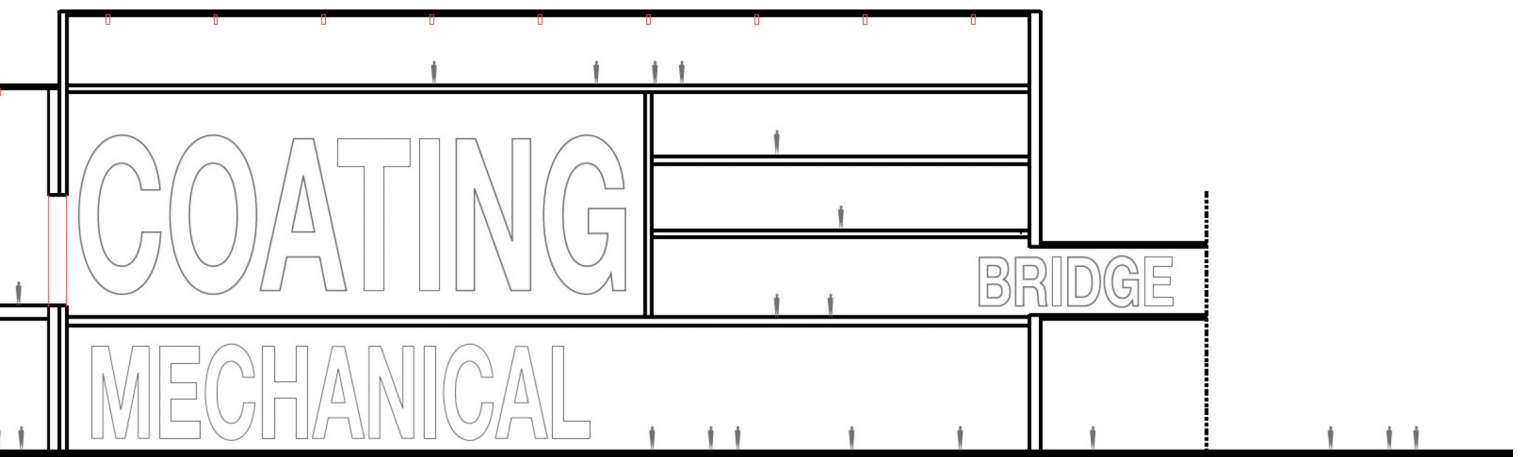




industrial fragments - spatial structure

The western half of it is bounded by the Bassin, an unused inland harbor and there are diverse urban pieces, like bars, shops, cinemas, and natural landscapes, across the Bassin, which make this part of the factory become a core area for the new urban plan to connect the inner industrial island and the city context. And there are two new buildings in this area responding to different urban pieces. The east half is adjacent to the Maas River. Therefore, we decide to make it become a place to present the culture of the factory and attract the people from the city.





industrial fragments - hierarchy

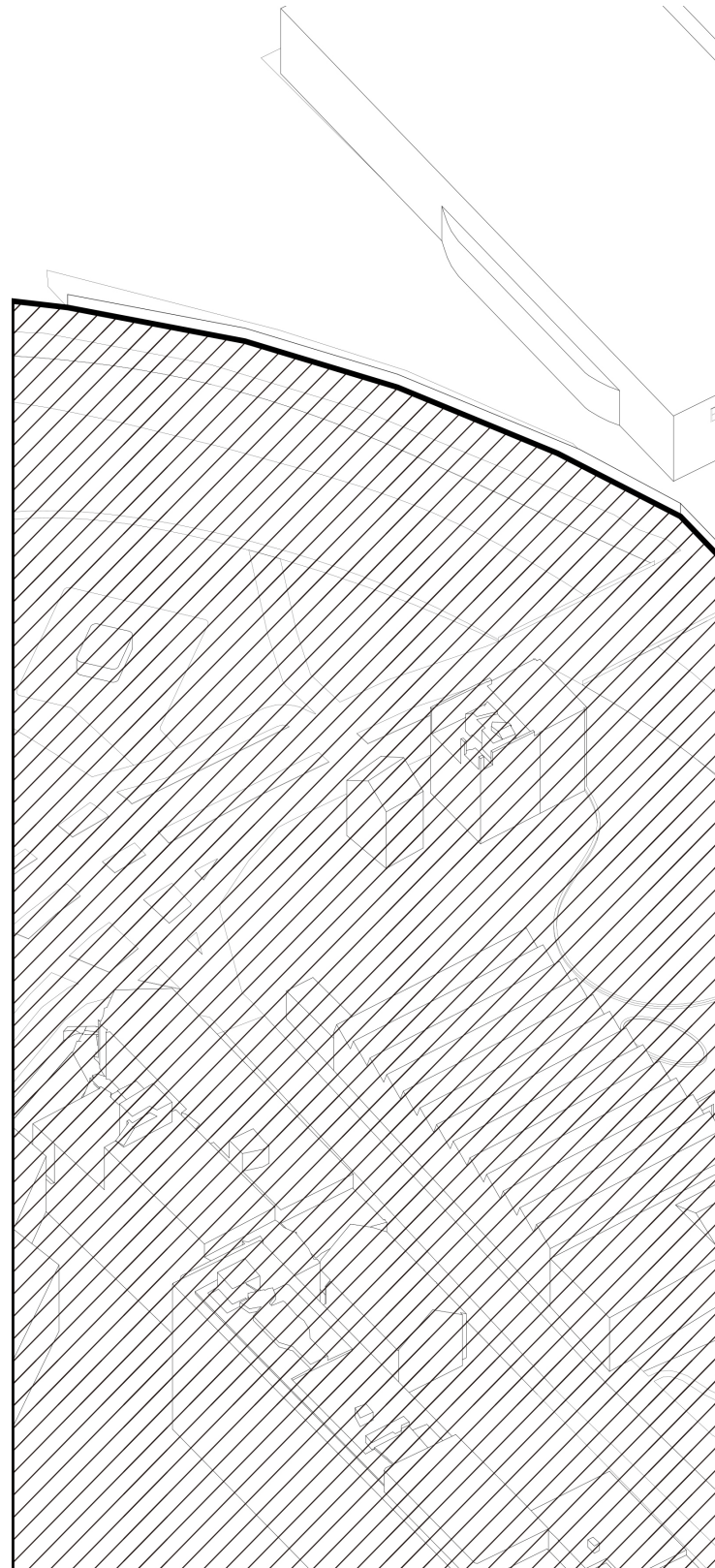
industrial fragments - flow

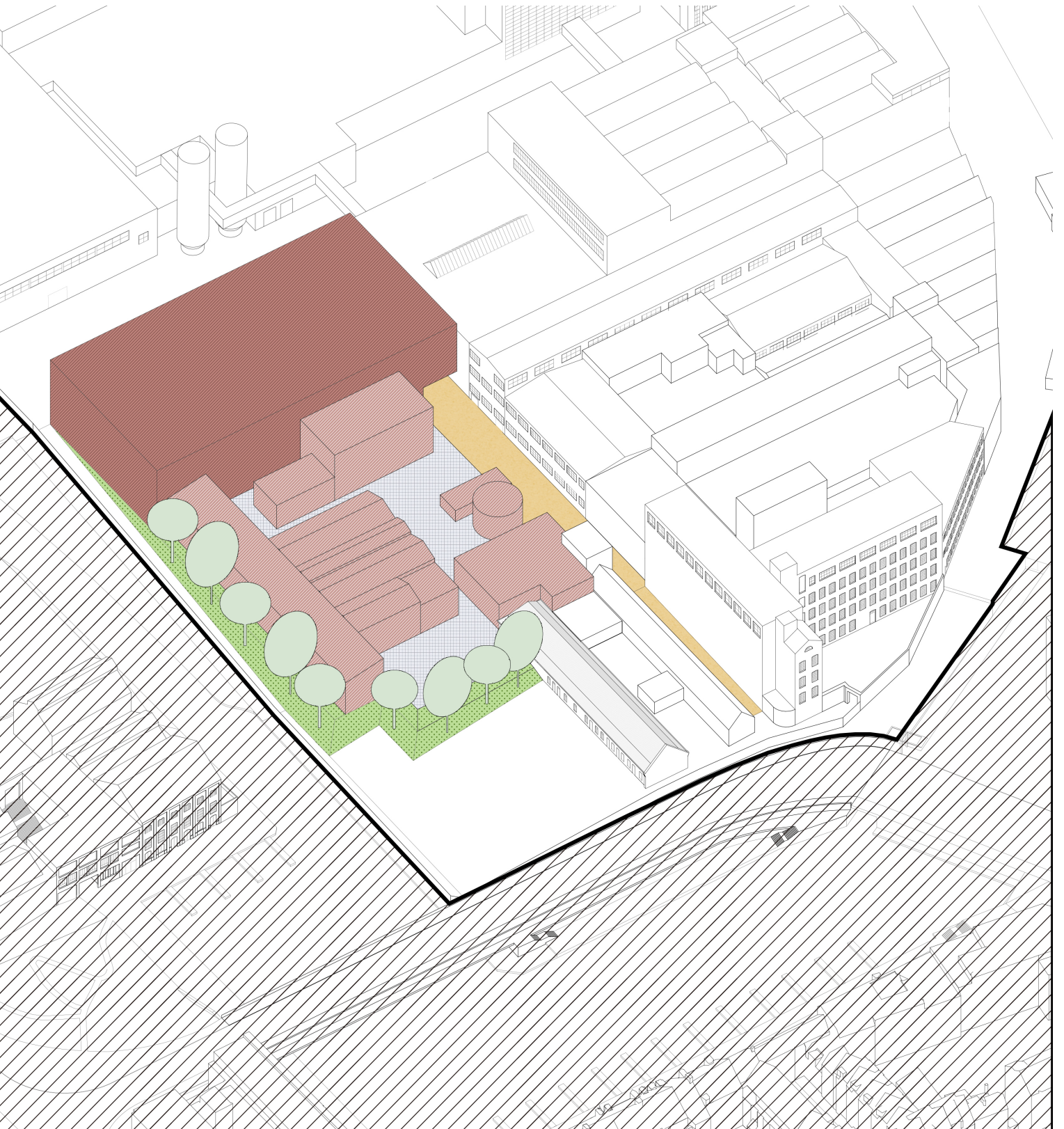
industrial fragments - open space

industrial fragments - greenery

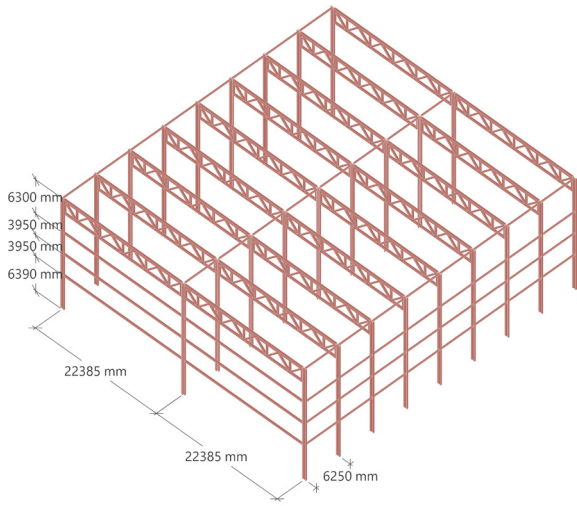
industrial fragments - steel structure

industrial fragments - material





industrial fragments - steel structure





industrial fragments - material







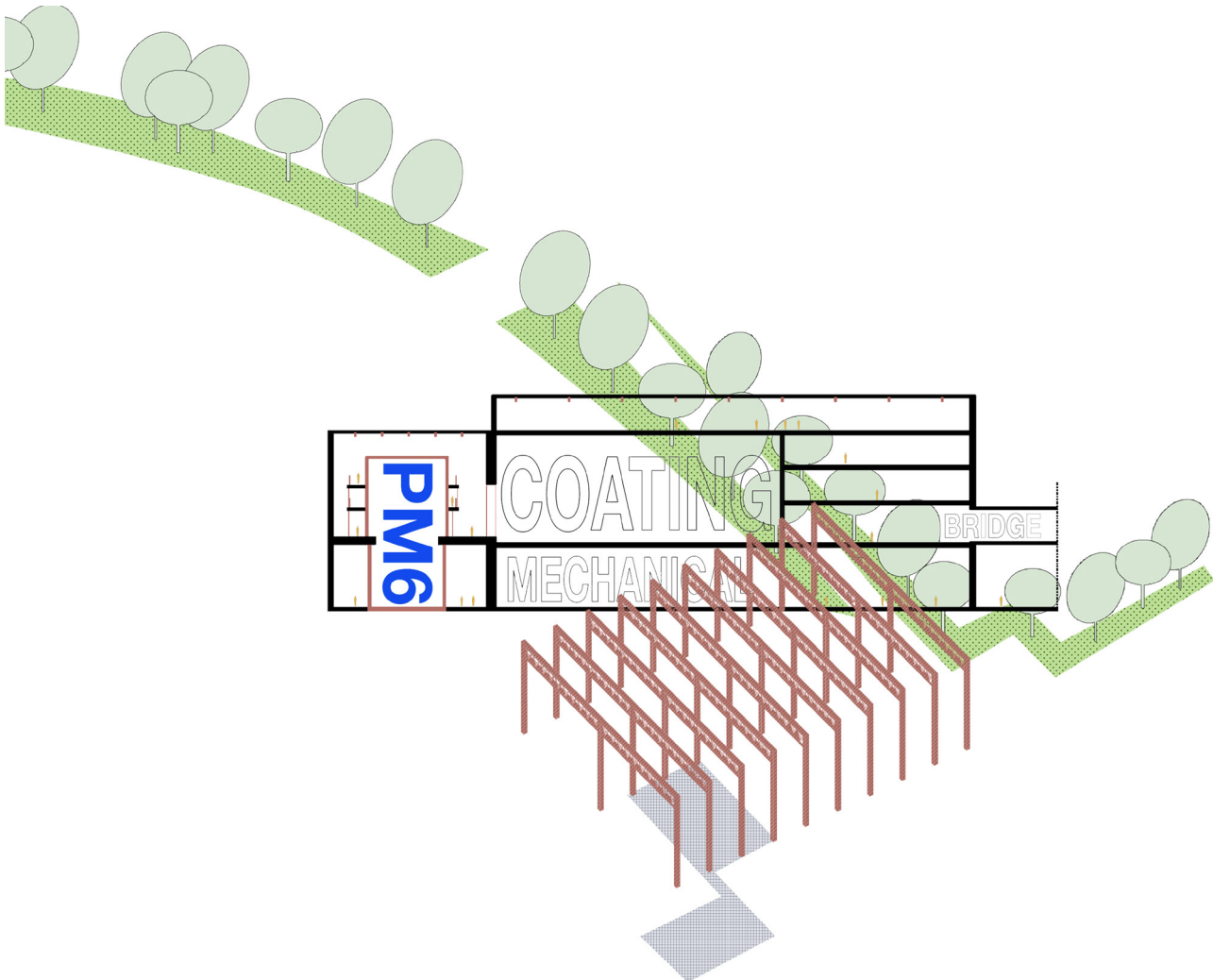
PUBLIC BUILDING &
COLLECTIVE SPACE



CANOPY & PLAZA

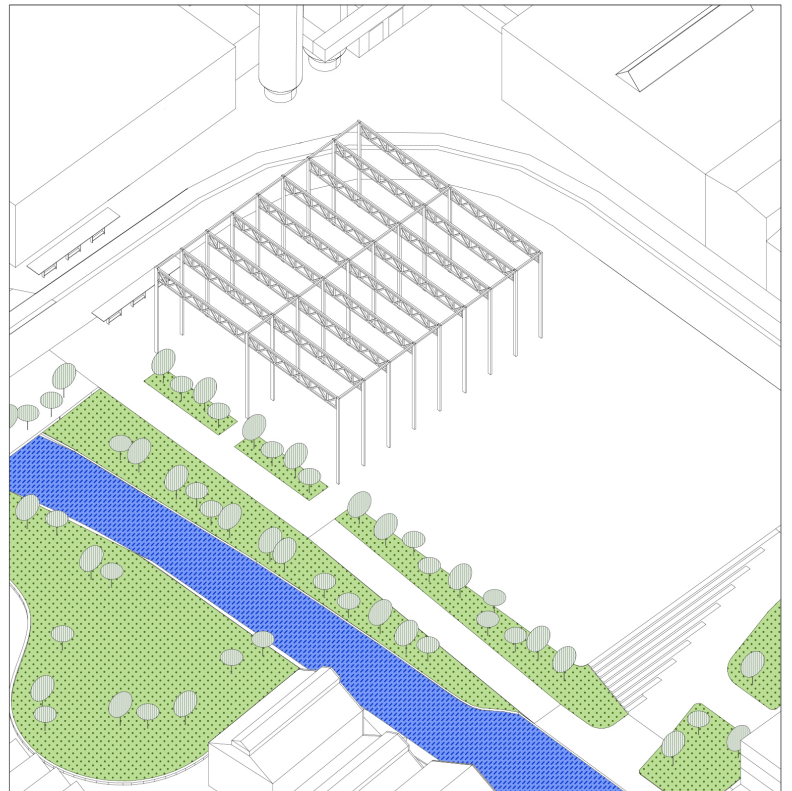
elevated sports centre

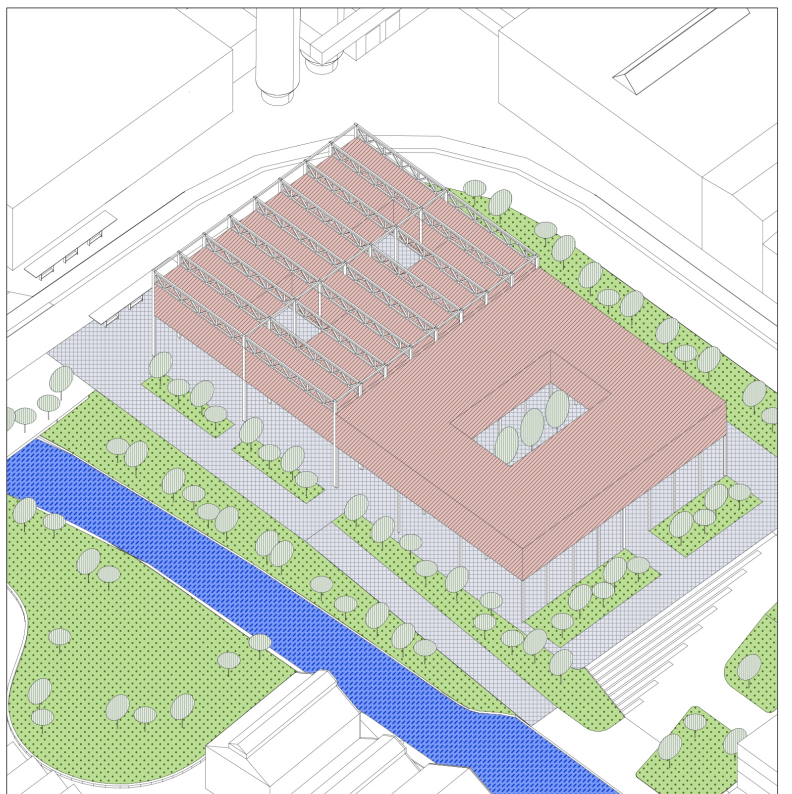
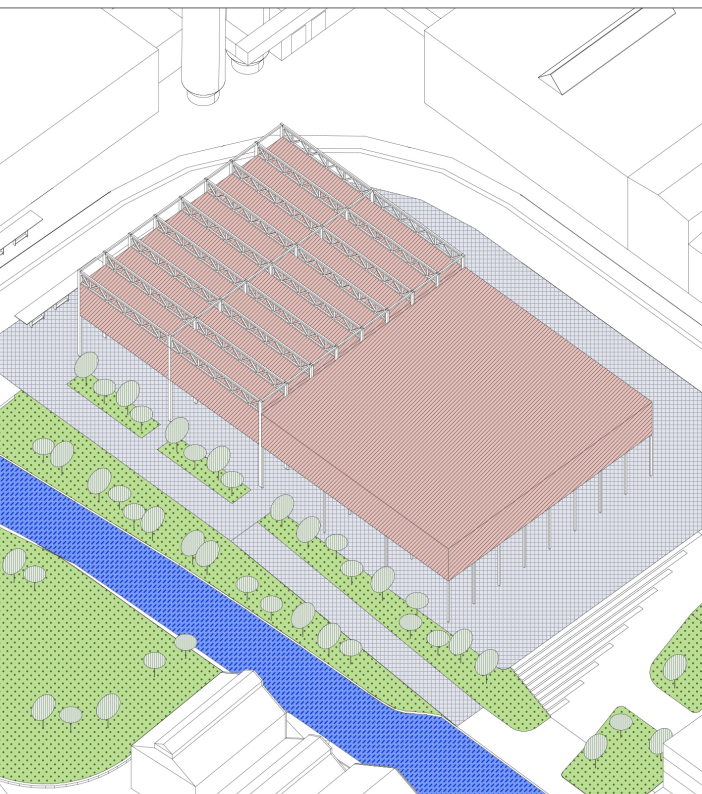
As the city is a man-made landscape made up of many fragments, harvesting and seeding the city's pieces and using the leftovers is the most sustainable way to add new value to the urban development. In addition, the site is located on a piece of land on the edge of the inner city of Maastricht. It is adjacent to the Maas River and features components commonly seen on the outskirts of cities, such as dilapidated buildings, shrinking industries, and incomplete infrastructure, which is not only challenging but also offers rich urban elements.

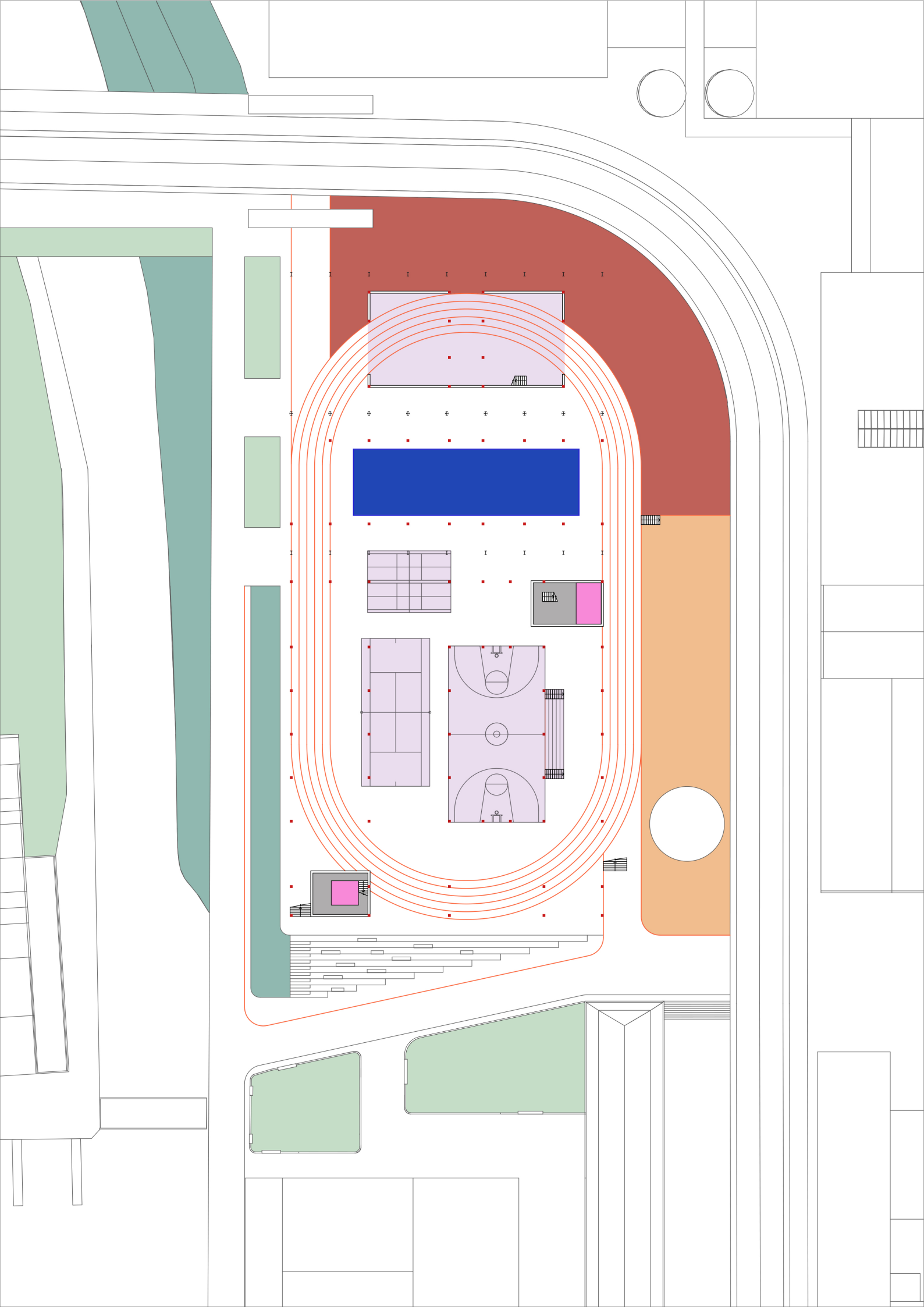


mass development

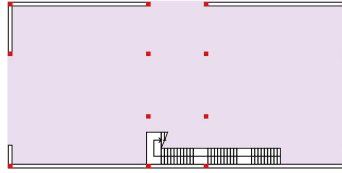
The western half of it is bounded by the Bassin, an unused inland harbor and there are diverse urban pieces, like bars, shops, cinemas, and natural landscapes, across the Bassin, which make this part of the factory become a core area for the new urban plan to connect the inner industrial island and the city context. And there are two new buildings in this area responding to different urban pieces. The east half is adjacent to the Maas River. Therefore, we decide to make it become a place to present the culture of the factory and attract the people from the city.



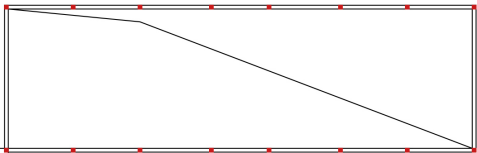




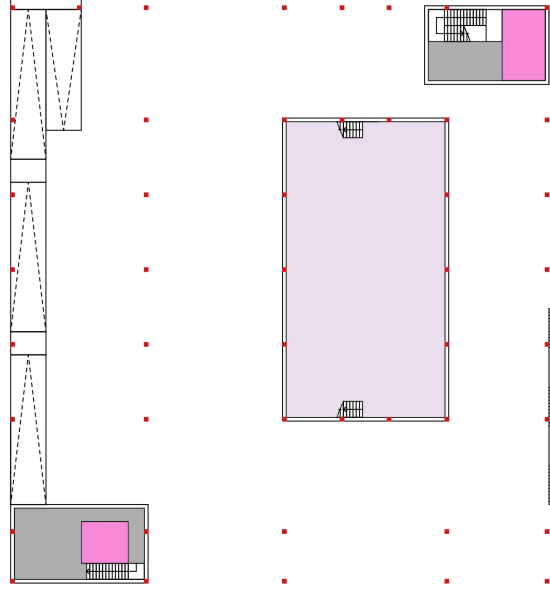
I I I I I I I I I

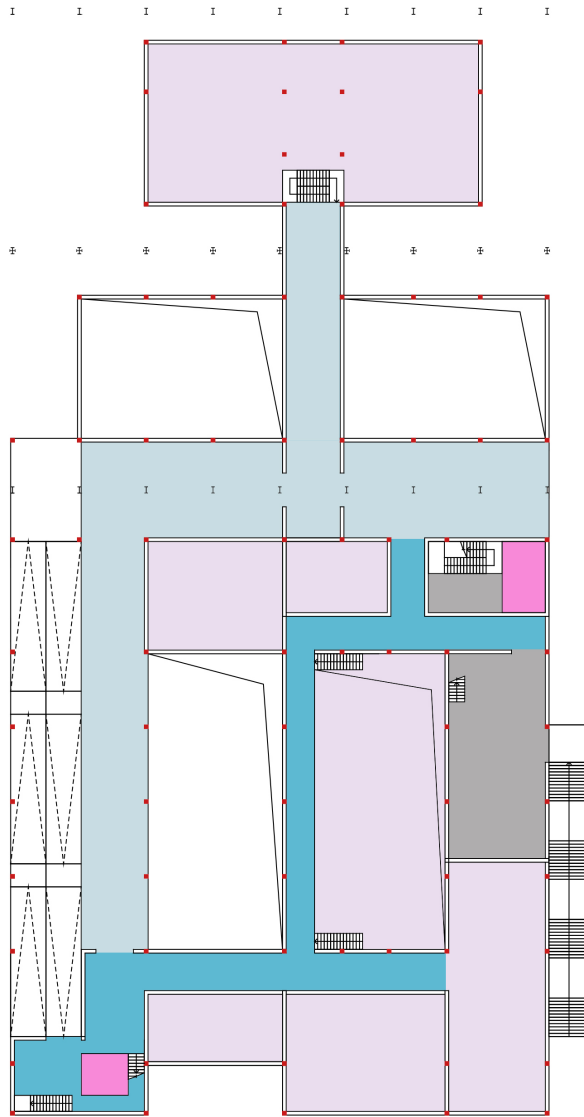


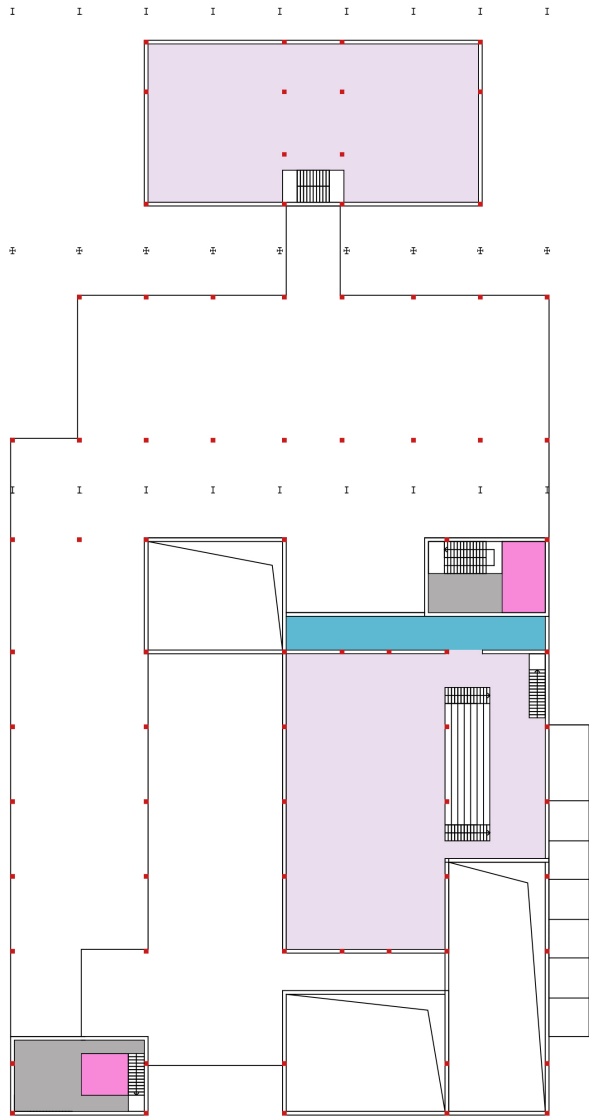
⊕ ⊕ ⊕ ⊕ ⊕ ⊕ ⊕ ⊕ ⊕

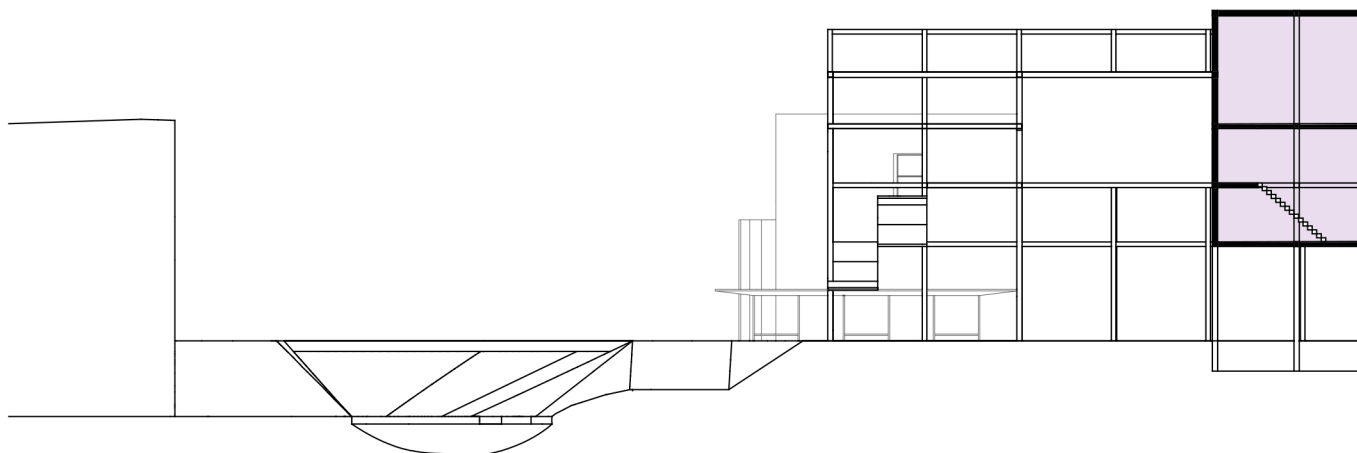
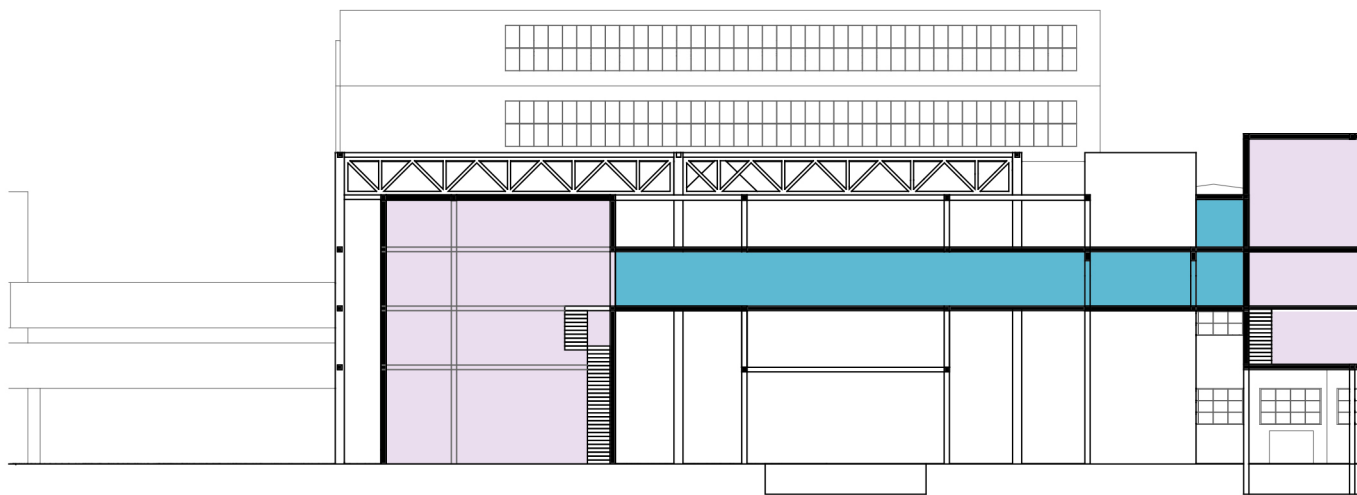


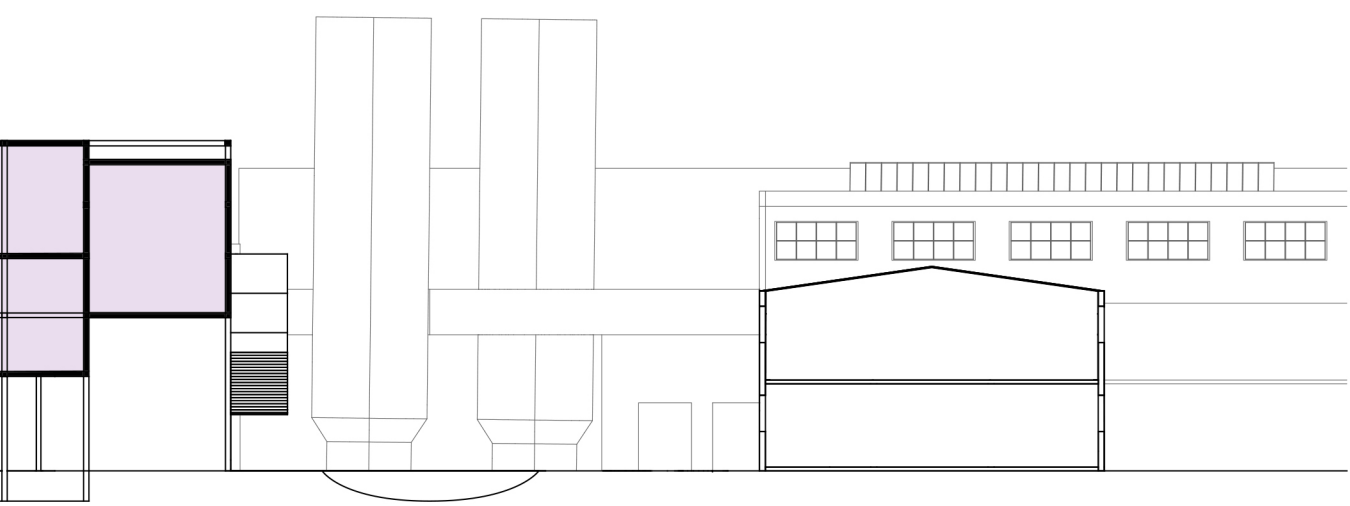
I I I I I I I I I

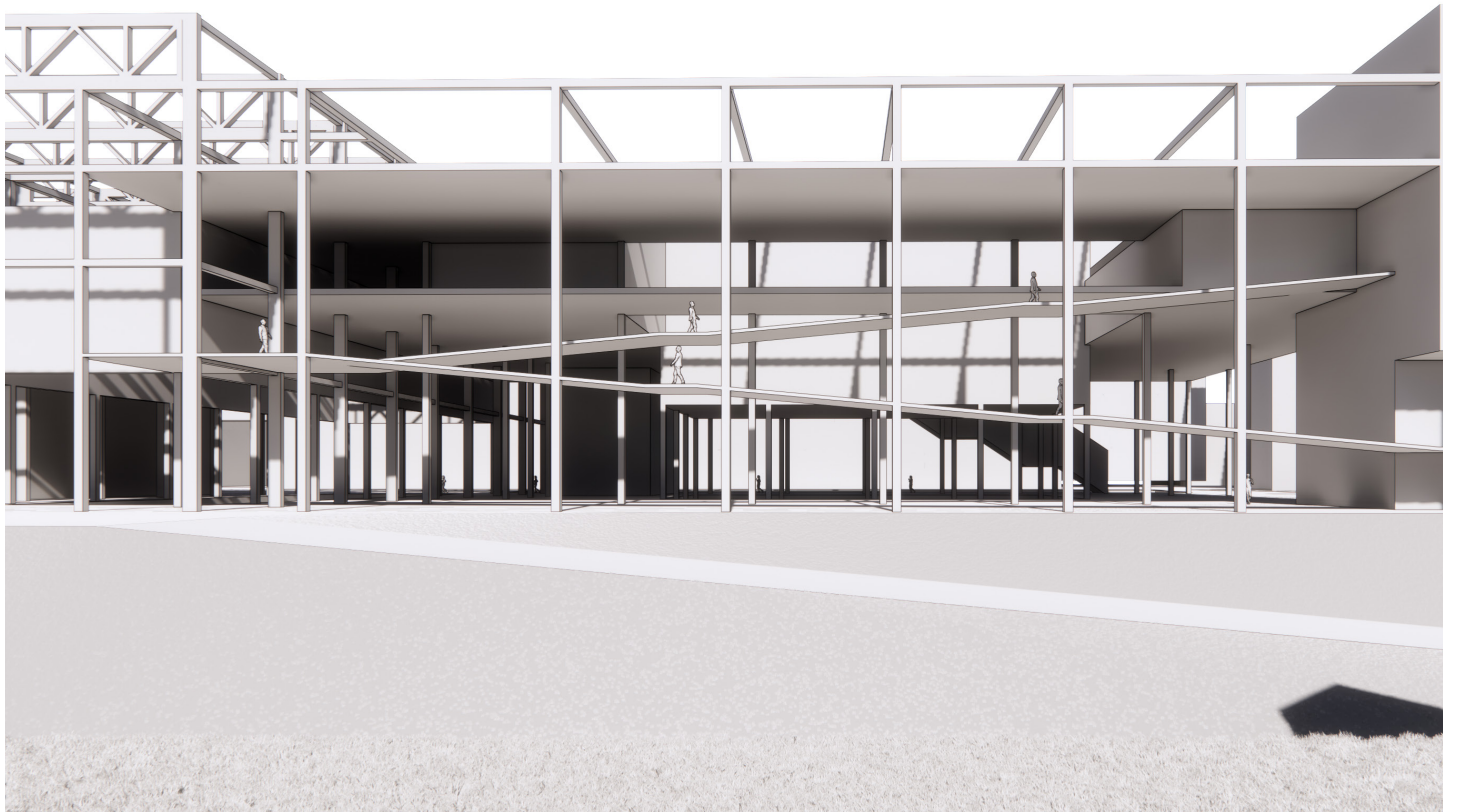


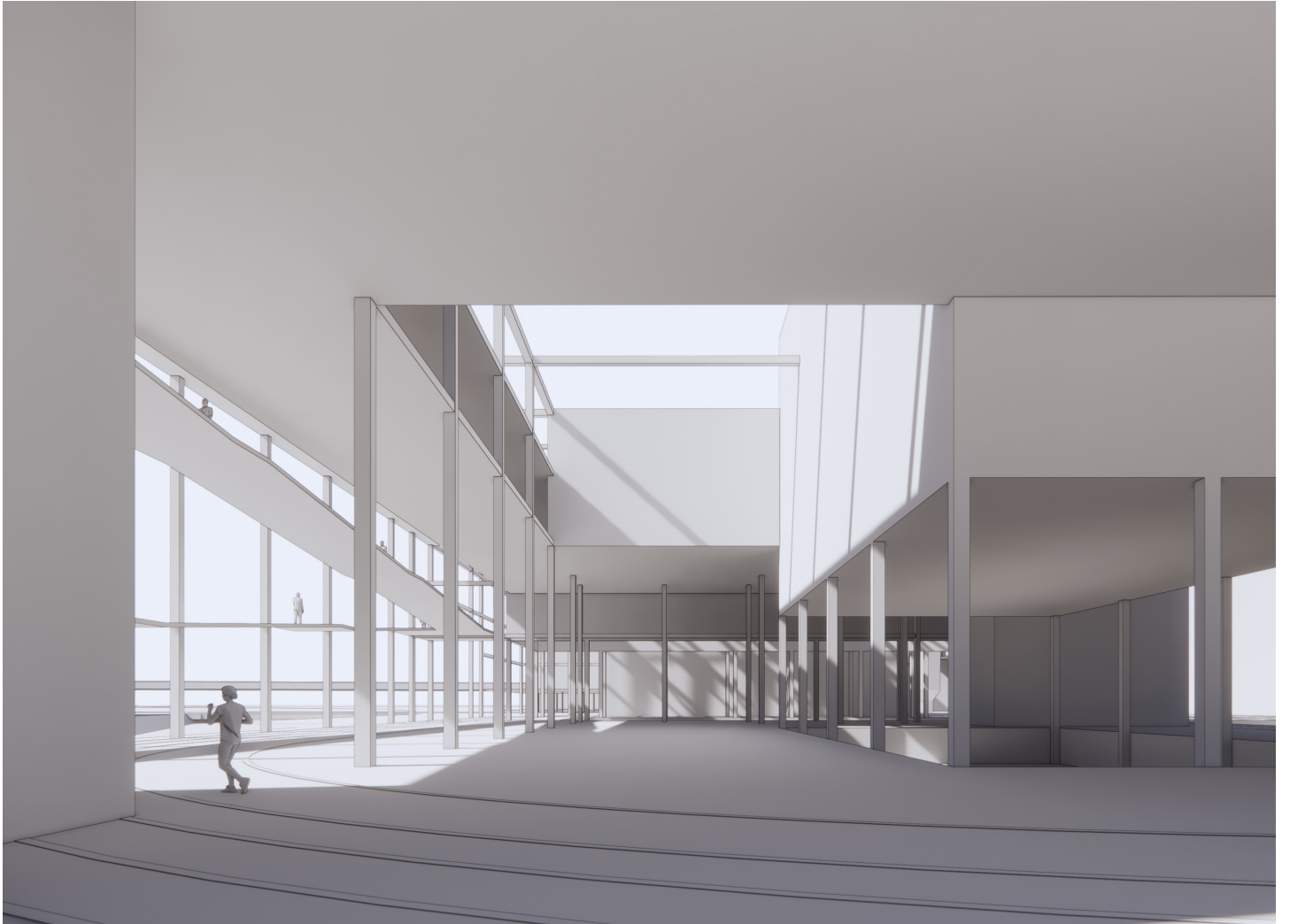










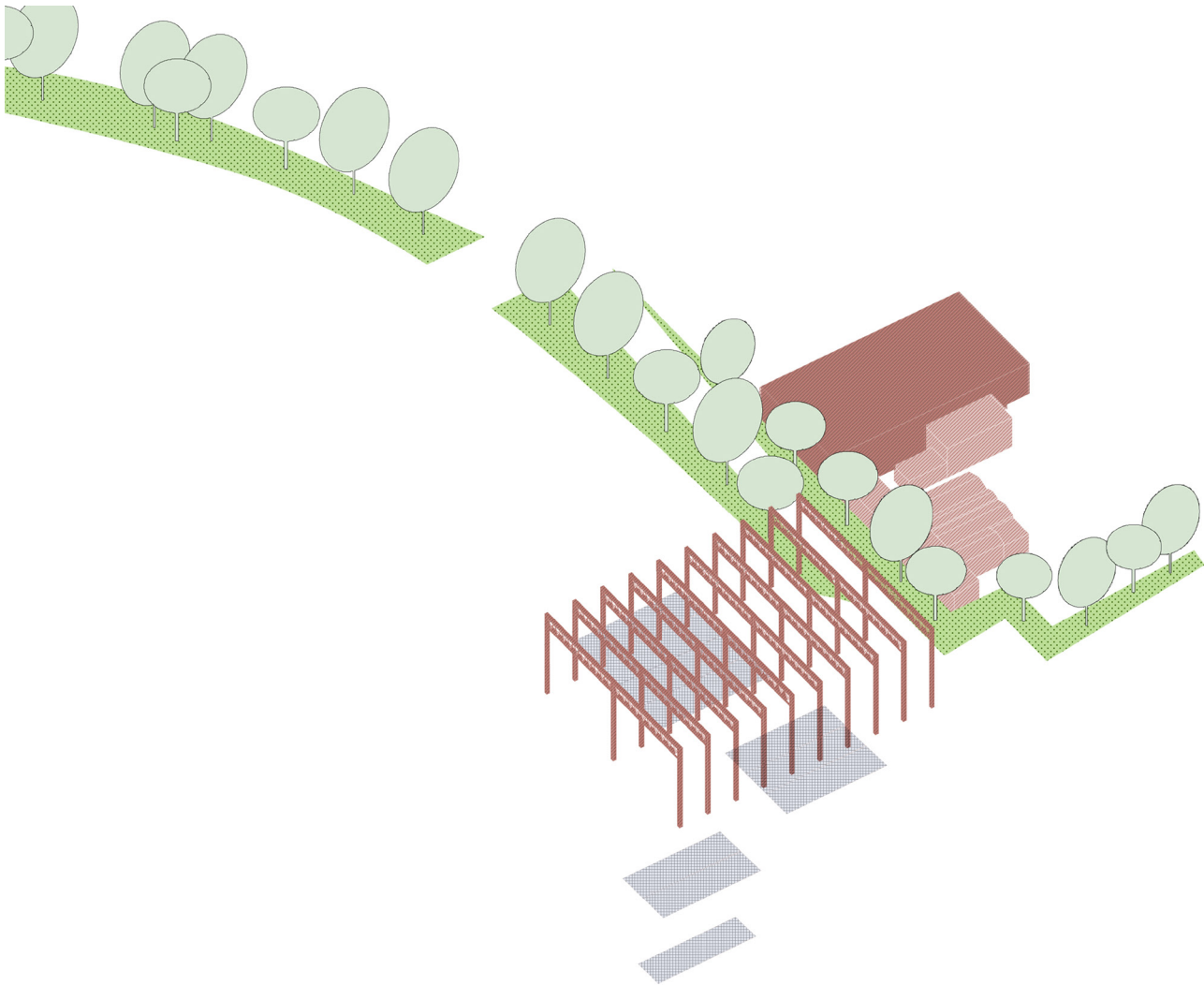




TERRACE & GARDEN

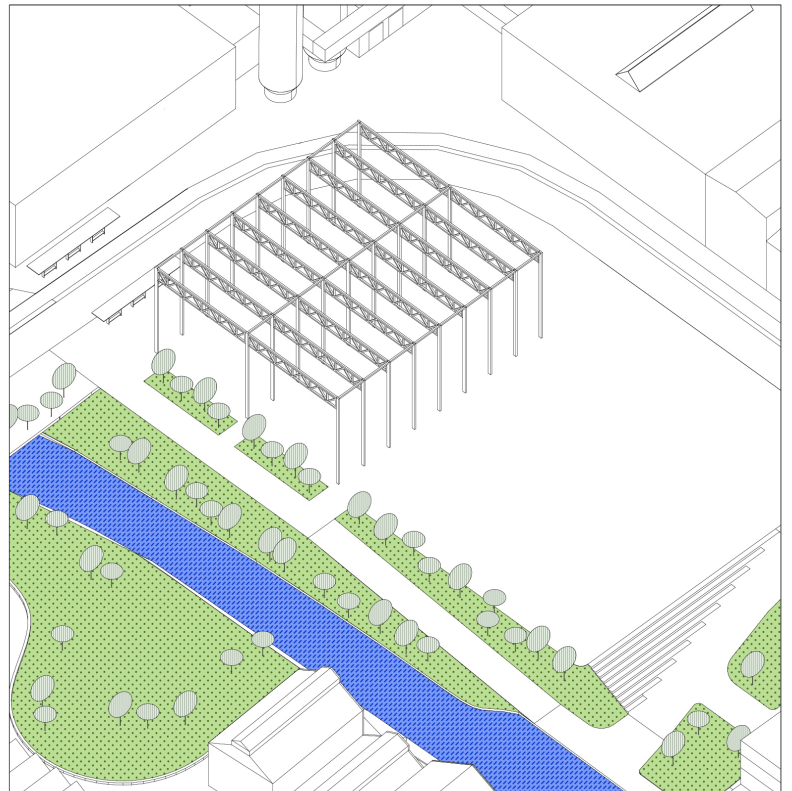
terraced sports centre

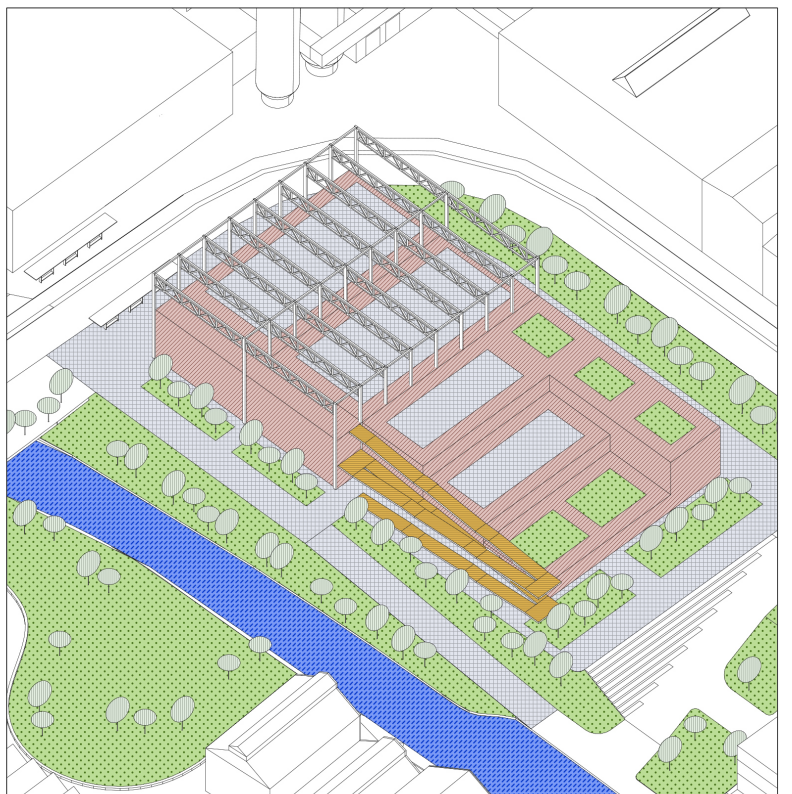
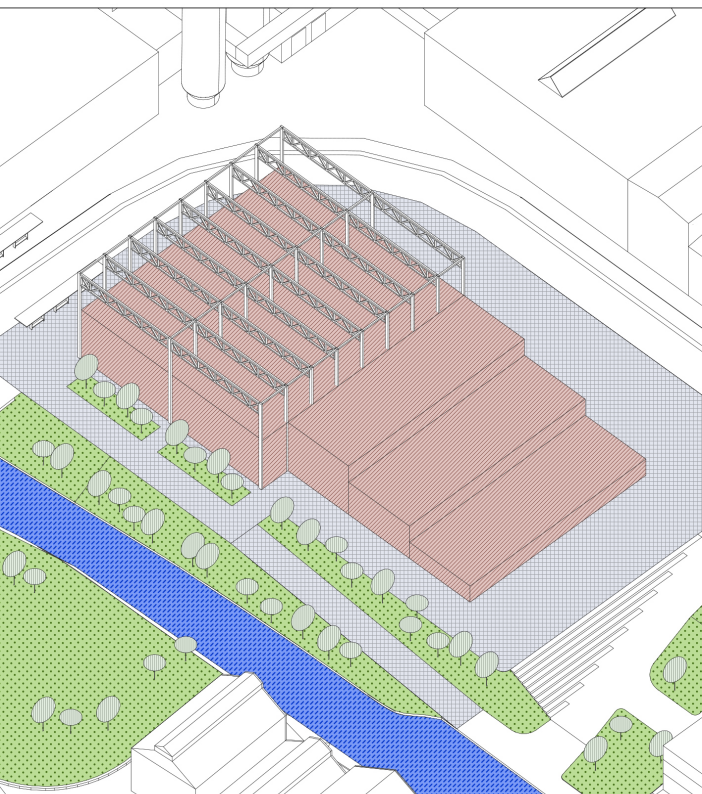
As the city is a man-made landscape made up of many fragments, harvesting and seeding the city's pieces and using the leftovers is the most sustainable way to add new value to the urban development. In addition, the site is located on a piece of land on the edge of the inner city of Maastricht. It is adjacent to the Maas River and features components commonly seen on the outskirts of cities, such as dilapidated buildings, shrinking industries, and incomplete infrastructure, which is not only challenging but also offers rich urban elements.

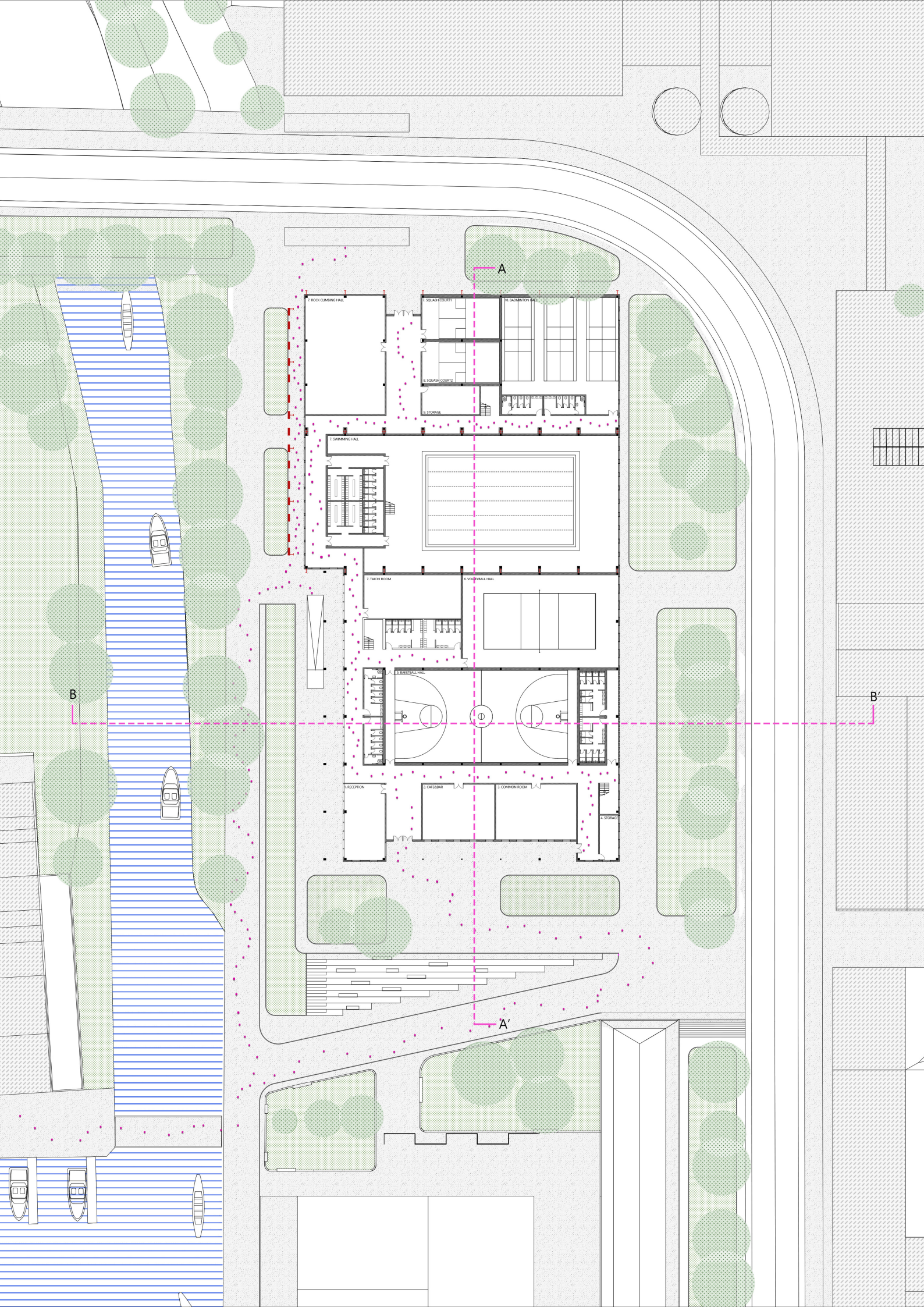


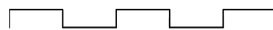
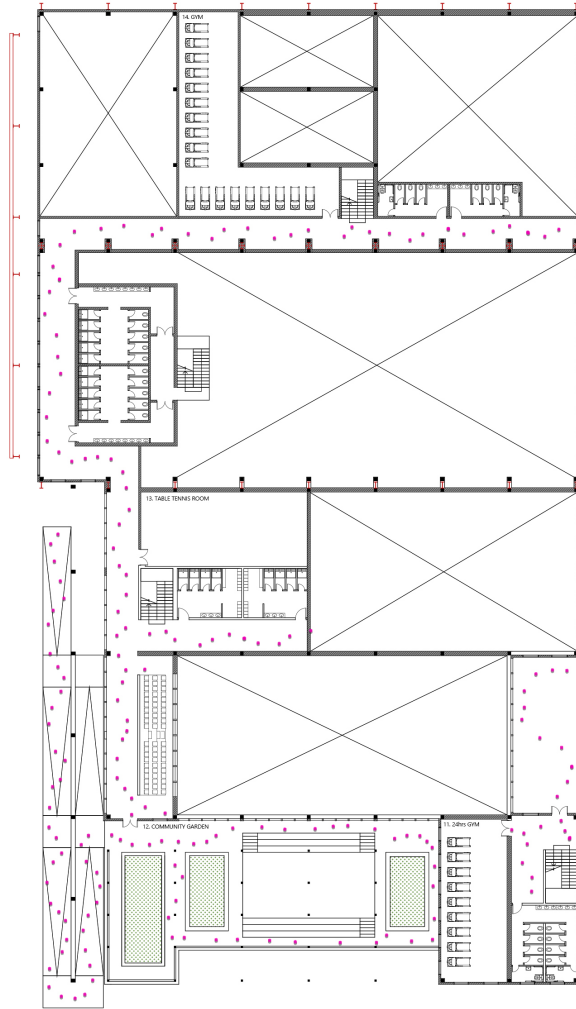
mass development

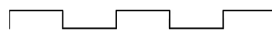
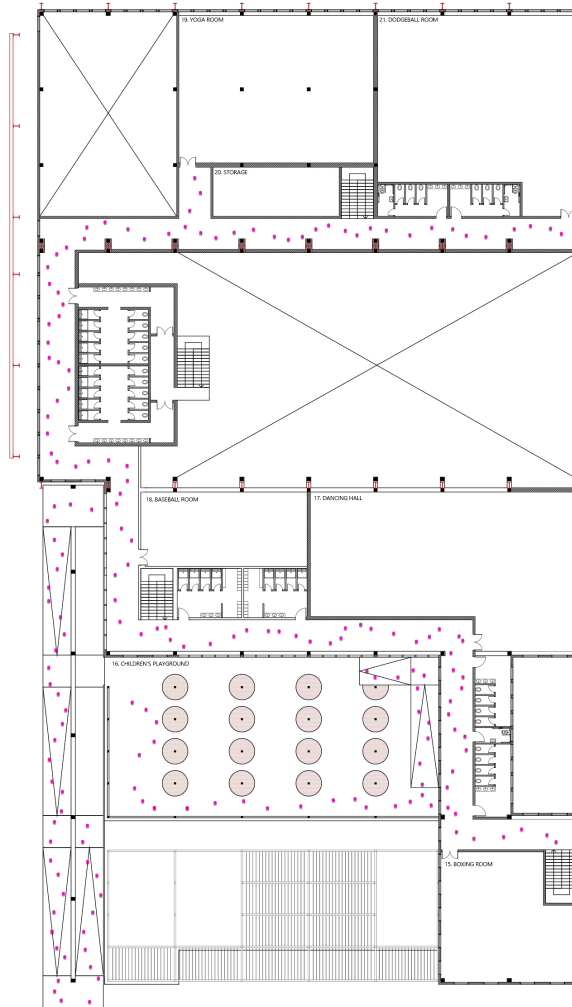
The western half of it is bounded by the Bassin, an unused inland harbor and there are diverse urban pieces, like bars, shops, cinemas, and natural landscapes, across the Bassin, which make this part of the factory become a core area for the new urban plan to connect the inner industrial island and the city context. And there are two new buildings in this area responding to different urban pieces. The east half is adjacent to the Maas River. Therefore, we decide to make it become a place to present the culture of the factory and attract the people from the city.

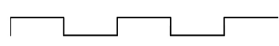
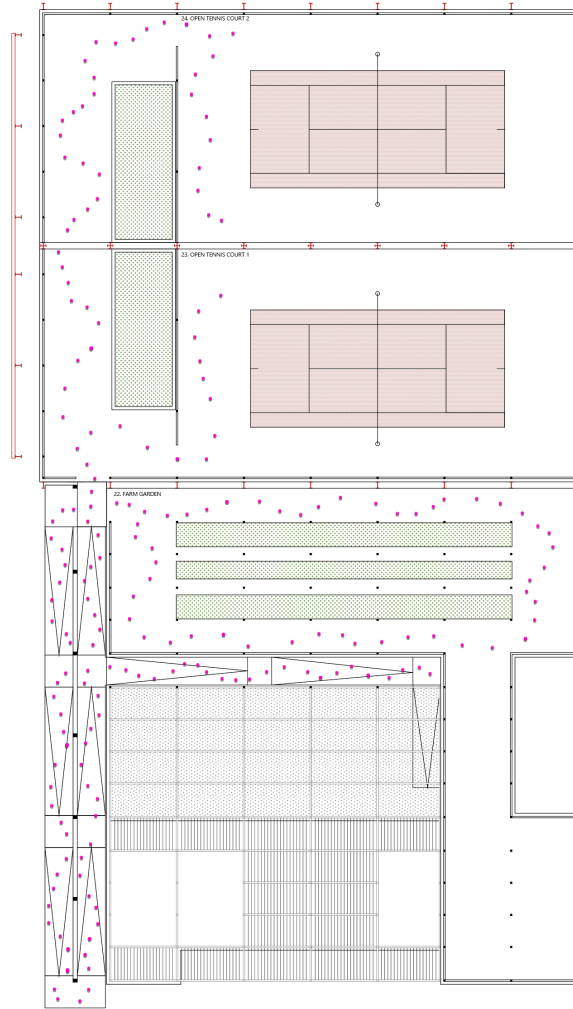


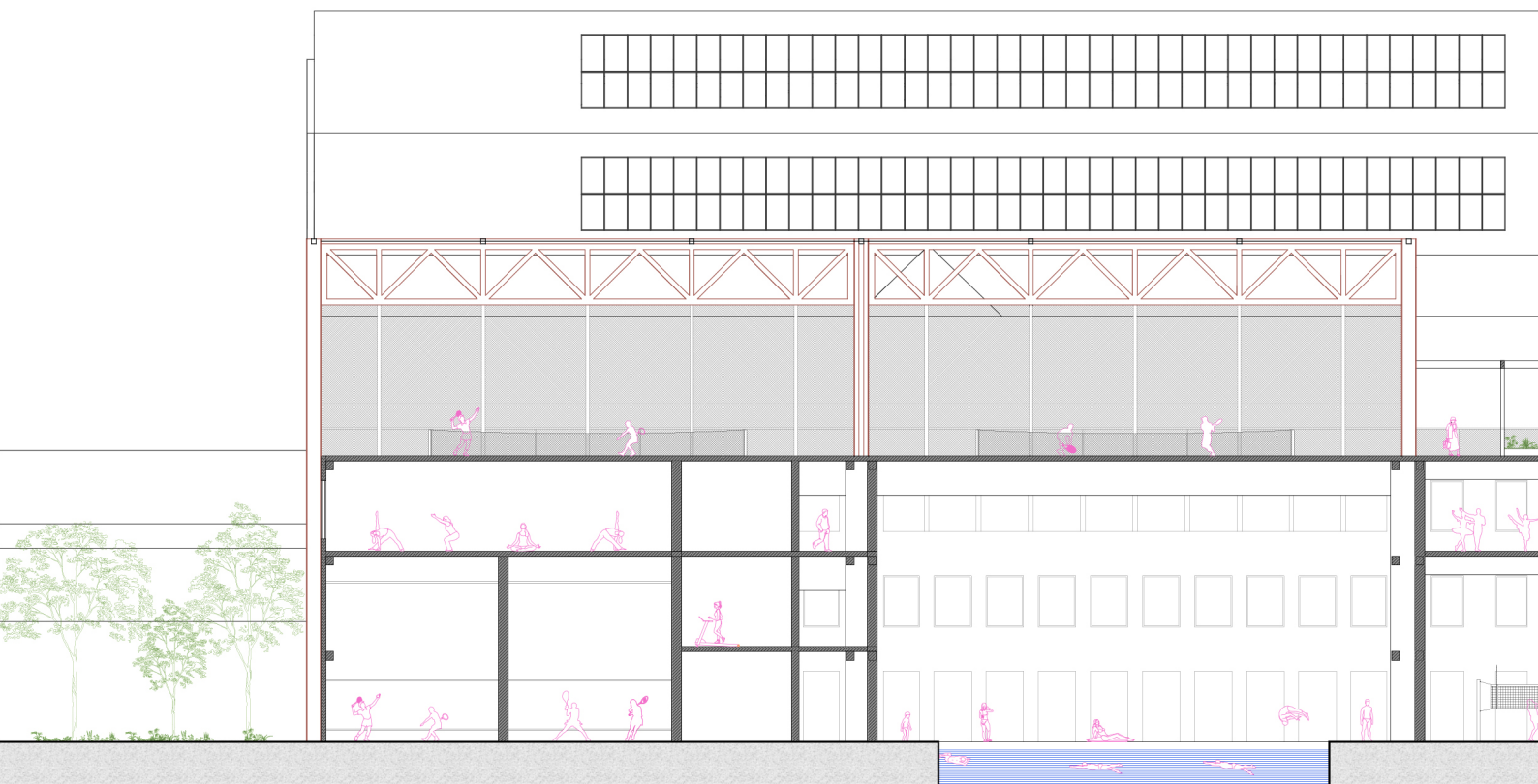




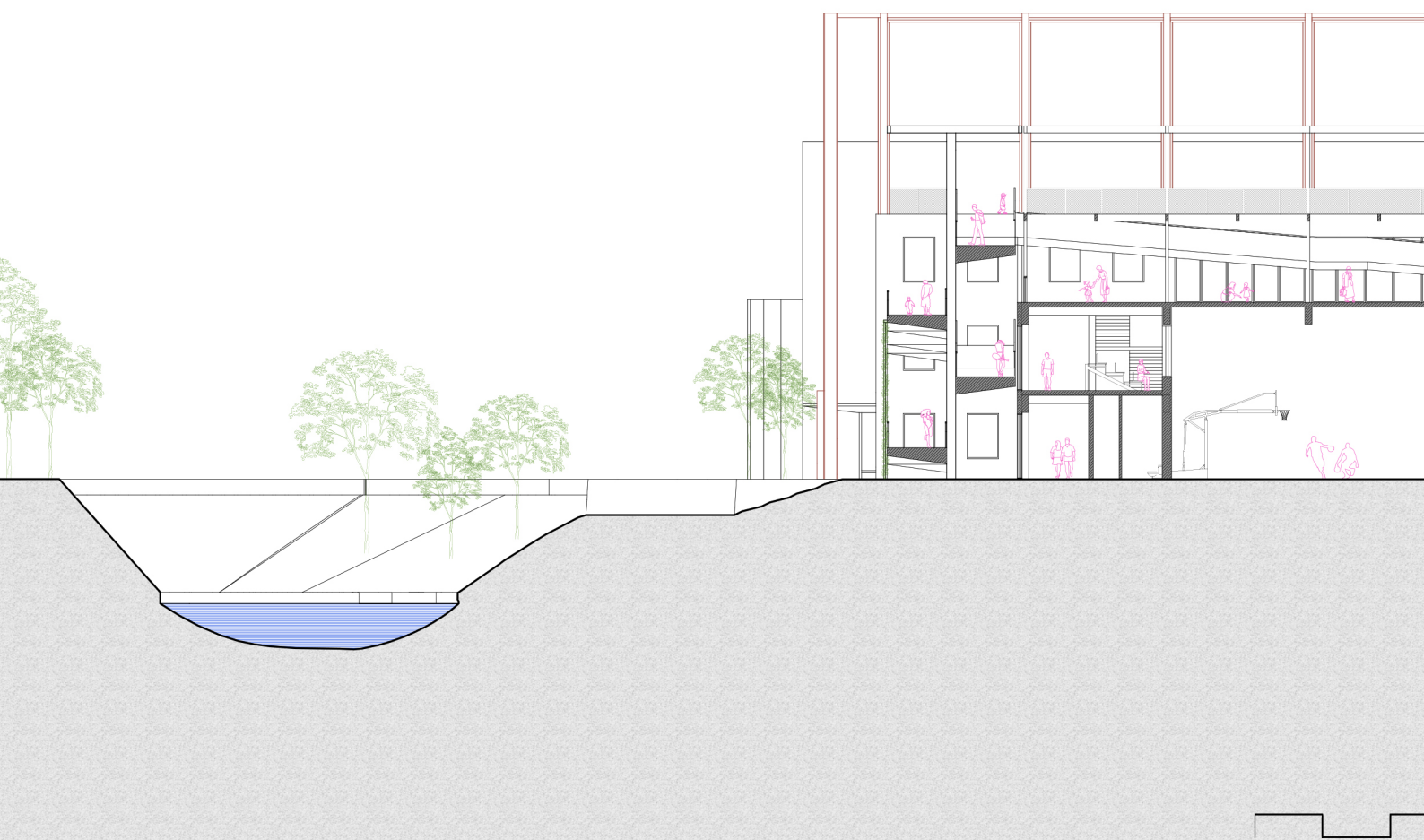




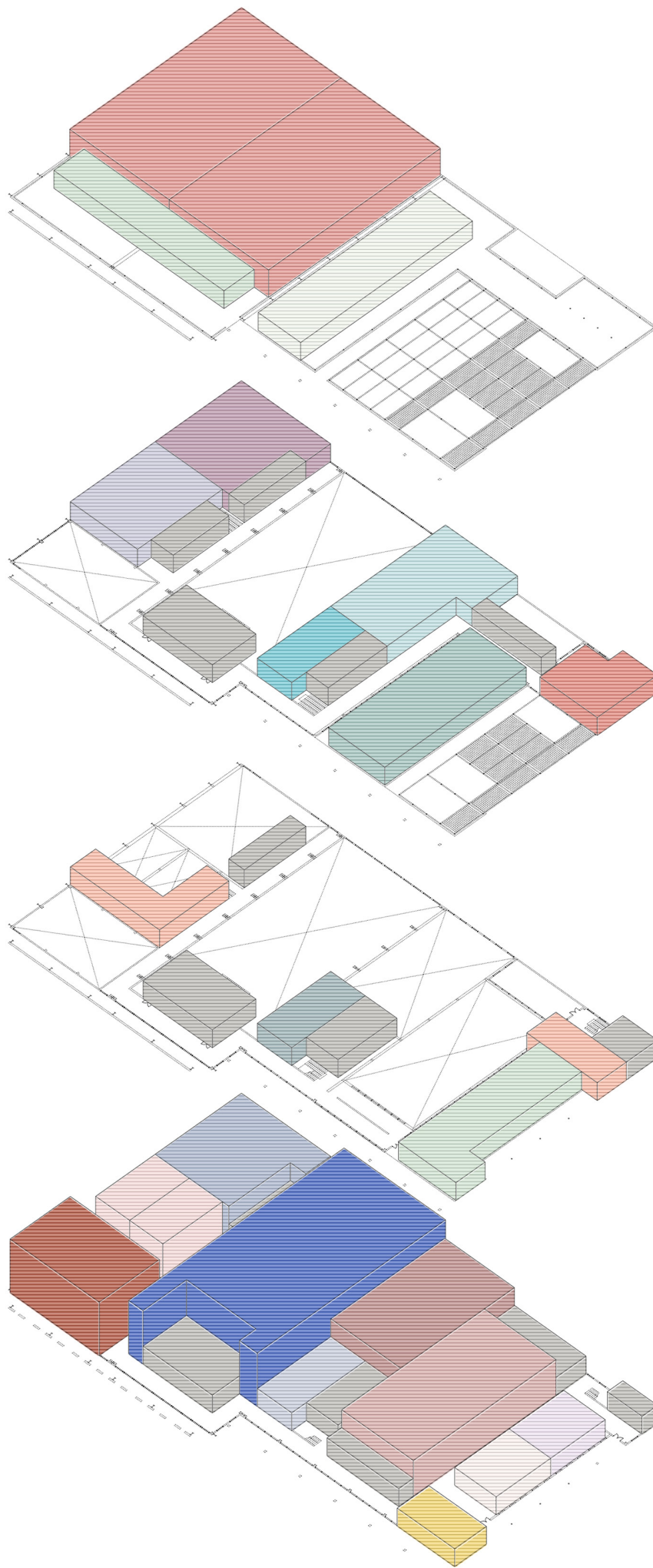












- open tennis court
- community garden
- farm garden

- yoga room
- dodgeball room
- dancing hall
- locker/shower/toilet/sto
- baseball room
- children's playground
- boxing room

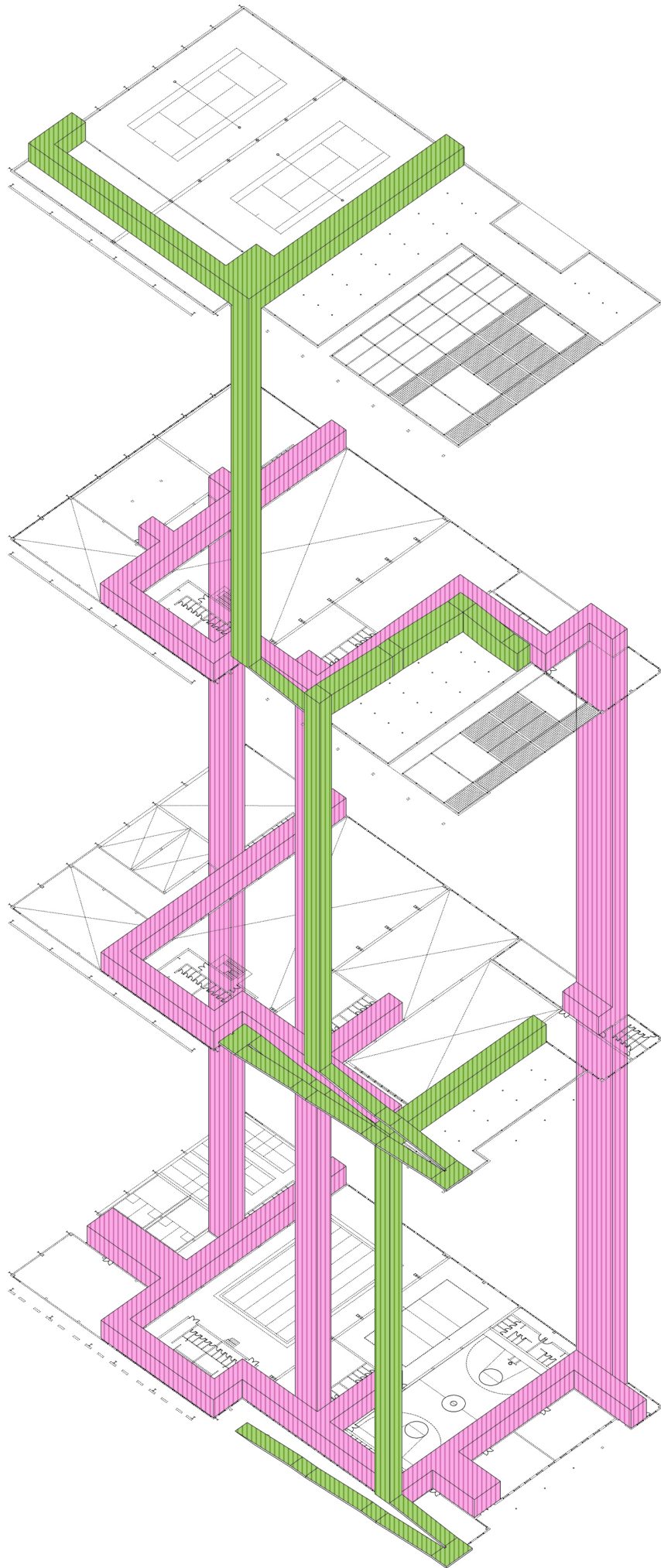
- gym
- locker/shower/toilet/sto
- table tennis room
- community garden

- badminton hall
- squash court
- rockclimbing hall
- swimming hall
- locker/shower/toilet/sto
- volleyball hall
- taichi room
- basketball hall
- common room
- cafe&bar
- reception

stage

stage

stage



- interior circulation
- exterior circulation



