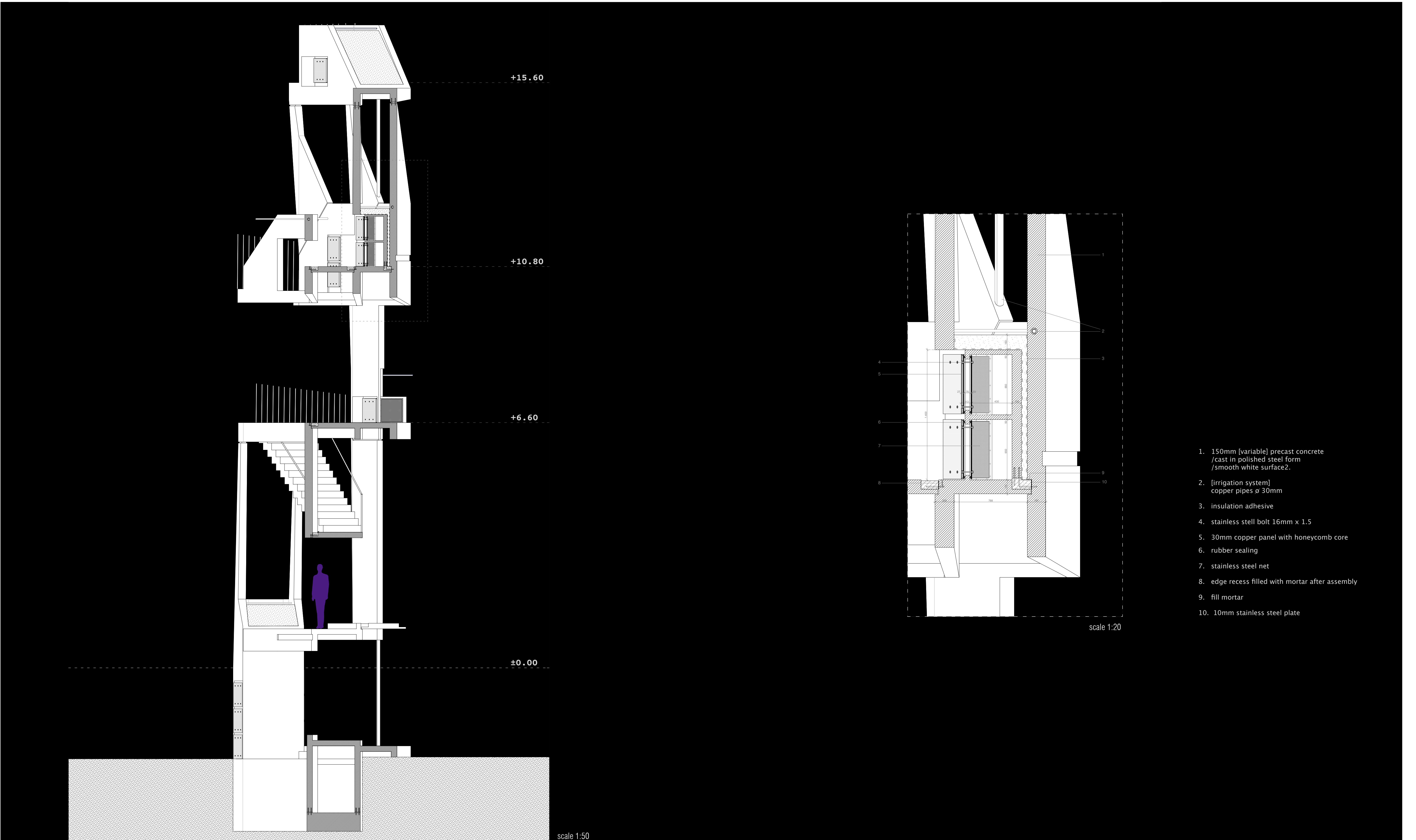
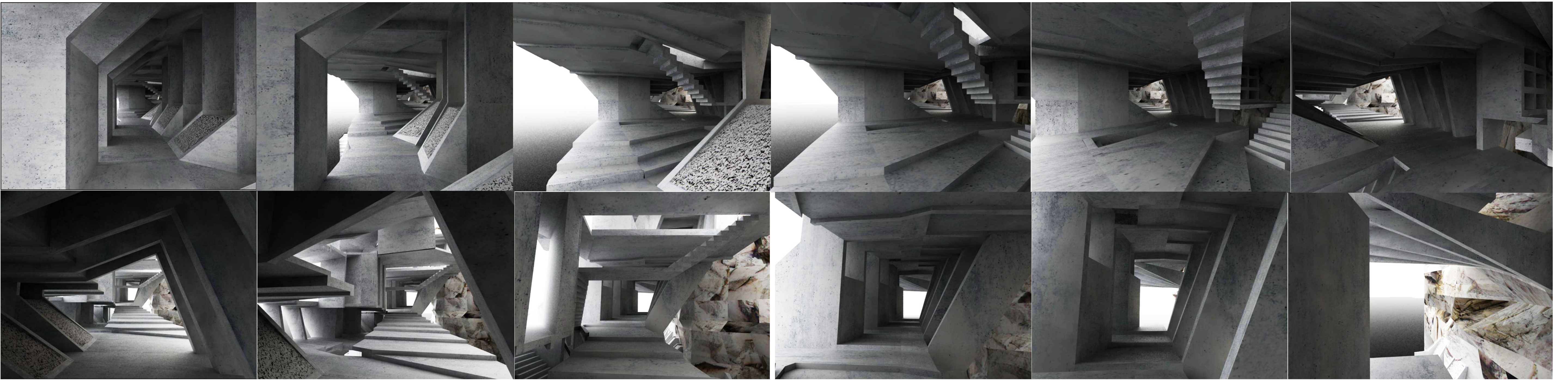


scale 1:200



scale 1:50

scale 1:20

1. 150mm [variable] precast concrete /cast in polished steel form /smooth white surface.
2. [irrigation system] copper pipes ø 30mm
3. insulation adhesive
4. stainless steel bolt 16mm x 1.5
5. 30mm copper panel with honeycomb core
6. rubber sealing
7. stainless steel net
8. edge recess filled with mortar after assembly
9. fill mortar
10. 10mm stainless steel plate