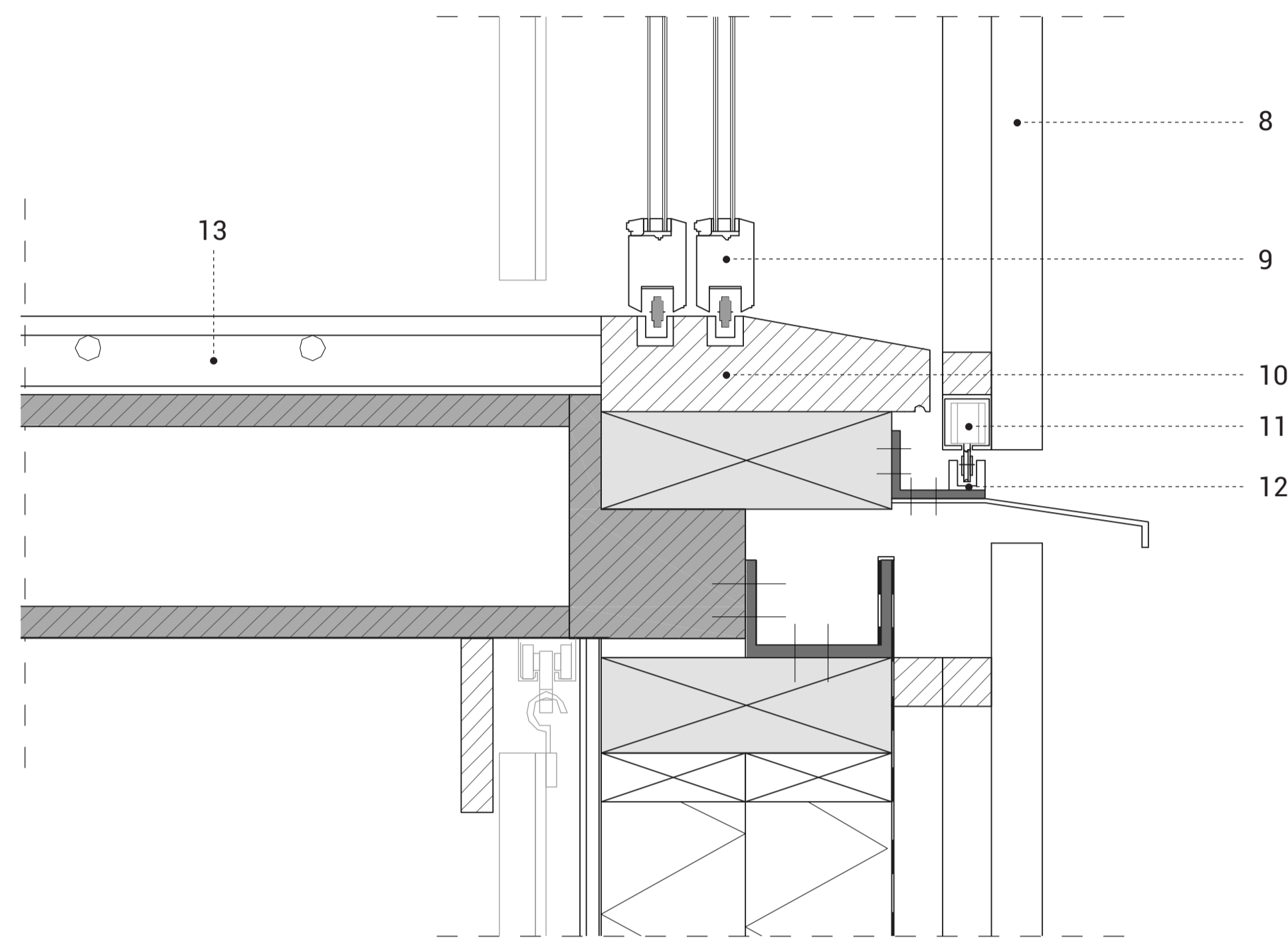


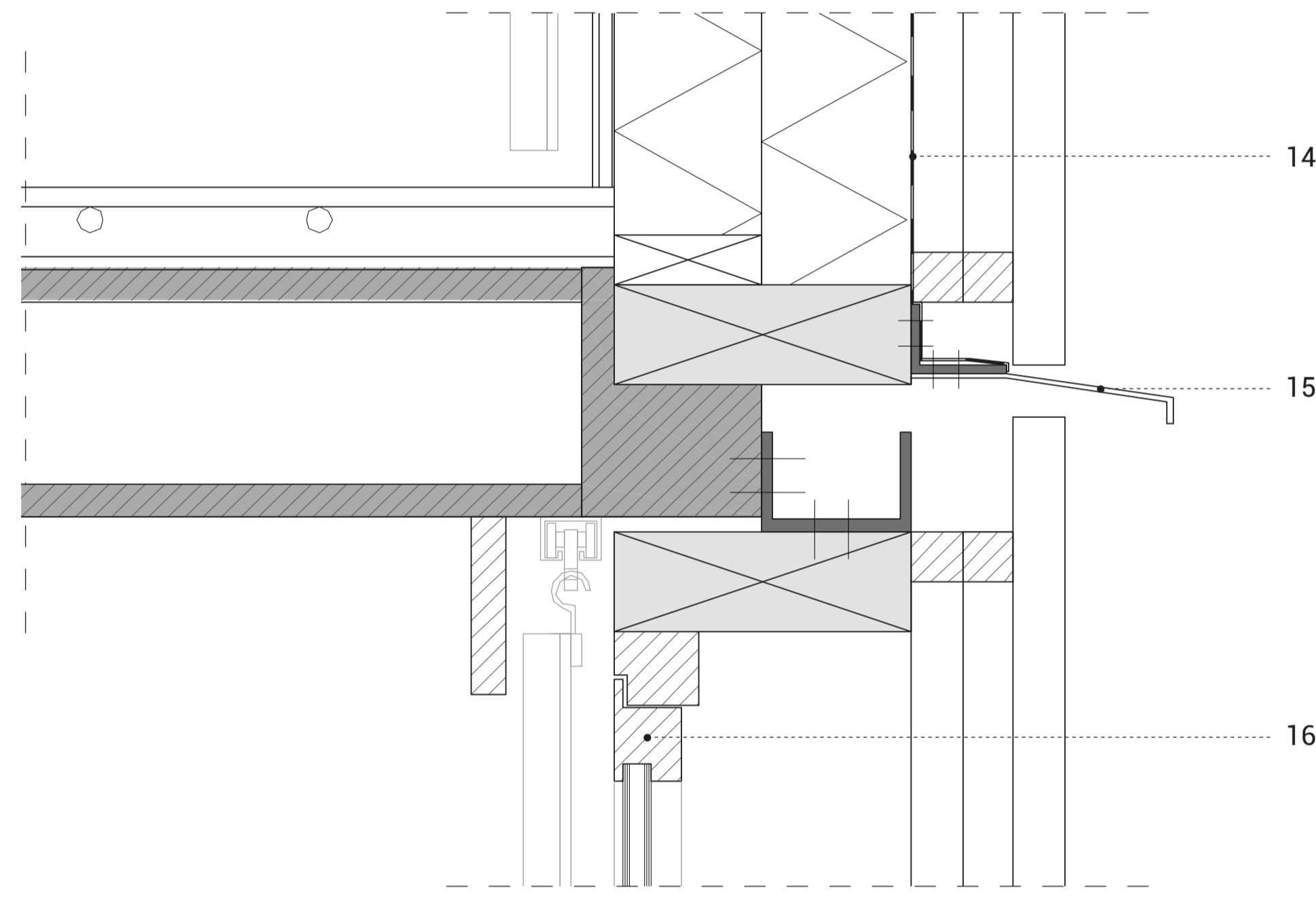
V1 roof detail

- 1 roof layers, top to bottom:
vegetation
Riefa board (light weight green roof)
membrane
waterproof layer
150 mm hard wood fibre insulation
250 mm lignatur floor
- 2 zinc roof profile
- 3 rain gutter
- 4 steel U-profile
- 5 steel L-profile
- 6 zinc profile
- 7 300 x 100 mm timber frame element



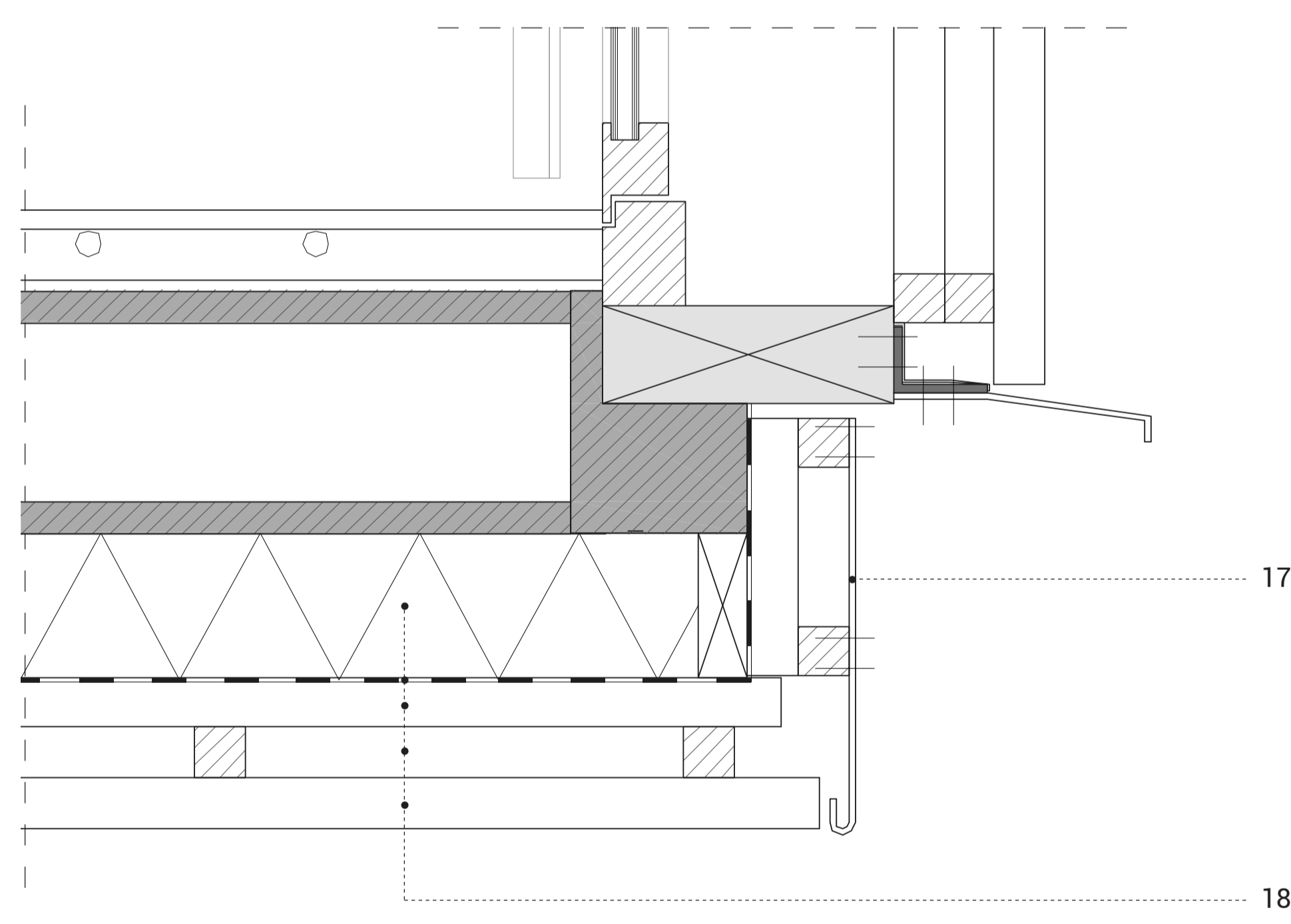
V2 facade detail

- 8 timber shutters on timber frame
- 9 sliding double door
- 10 timber frame
- 11 element for rotation of timber frame when opening shutters
- 12 steel rail
- 13 floor construction - top to bottom:
floor finish
sand-cement mixture
damp proof membrane
Lignatur floor 250 mm



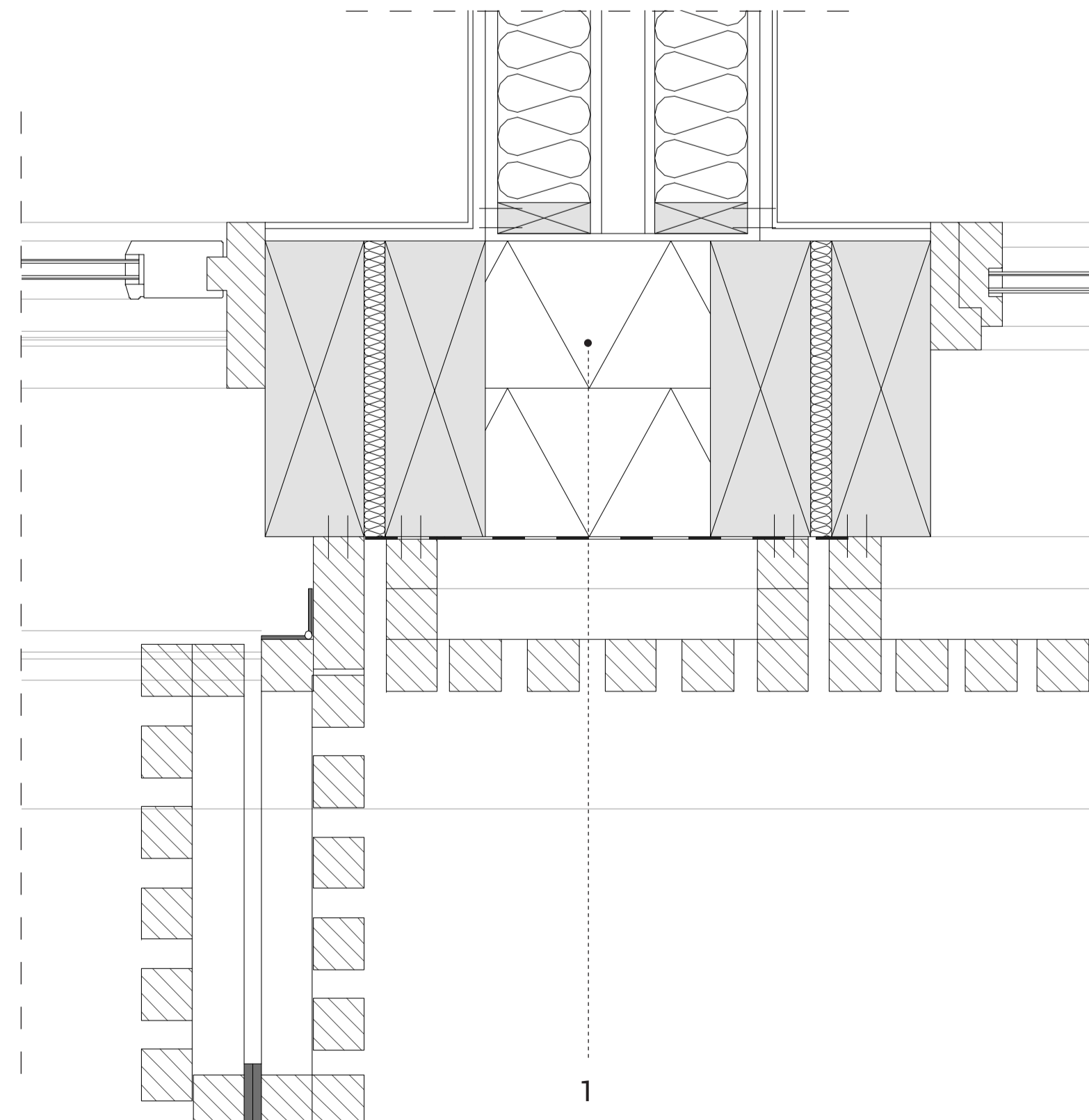
V3 facade detail

- 14 insulated wall panel, inside to outside:
finishing
plaster board
300 mm timber frame element with wood fiber insulation
50 mm vertical timber slats
50 mm horizontal timber slats
vertical timber cladding
- 15 zinc roof profile
- 16 timber frame window - openable to inside



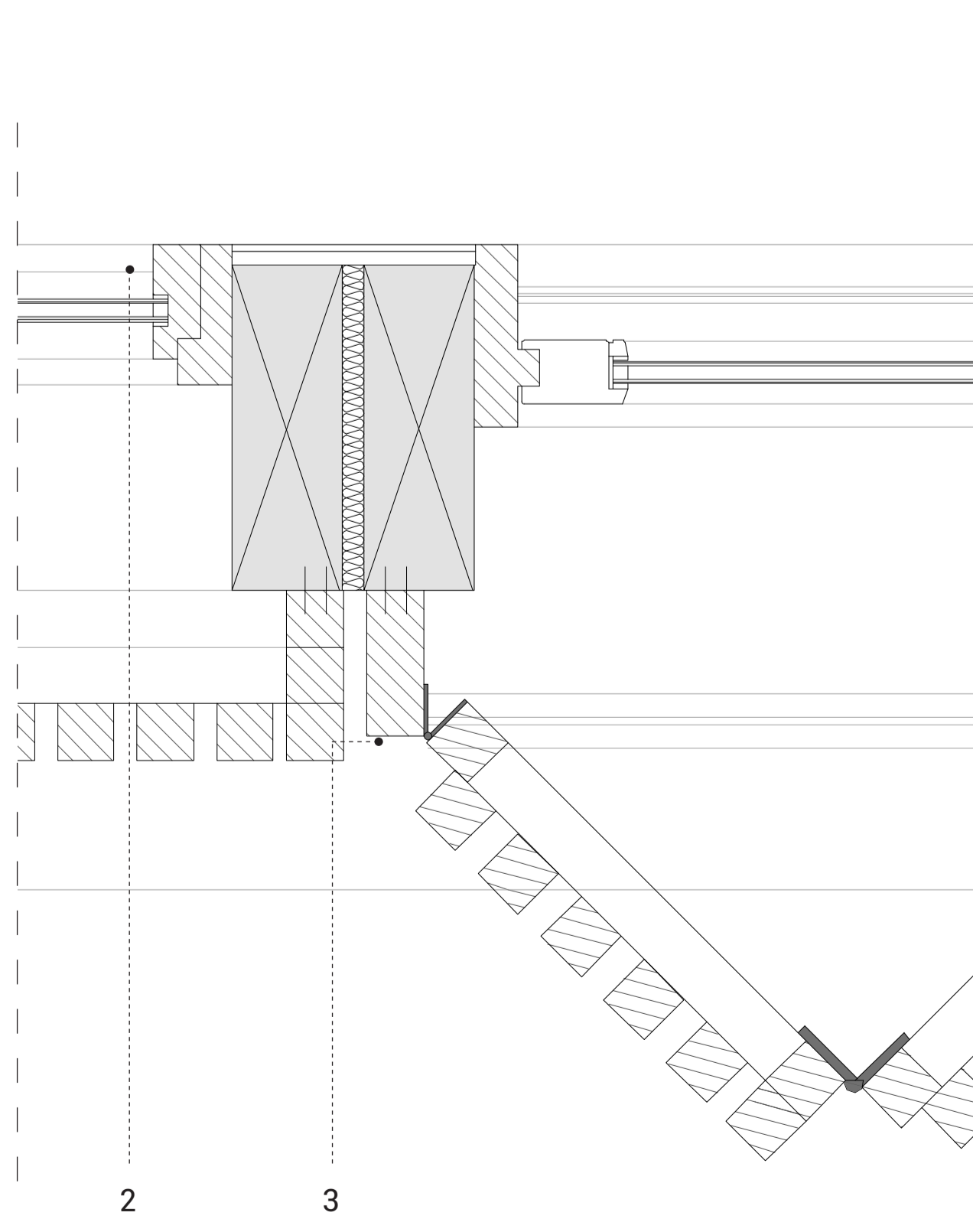
V4 outdoor ceiling detail

- 17 zinc profile
- 18 outdoor ceiling, inside to outside:
150 mm hard wood fibre insulation
waterproof layer
50 mm vertical timber slats
50 mm horizontal timber slats
vertical timber cladding



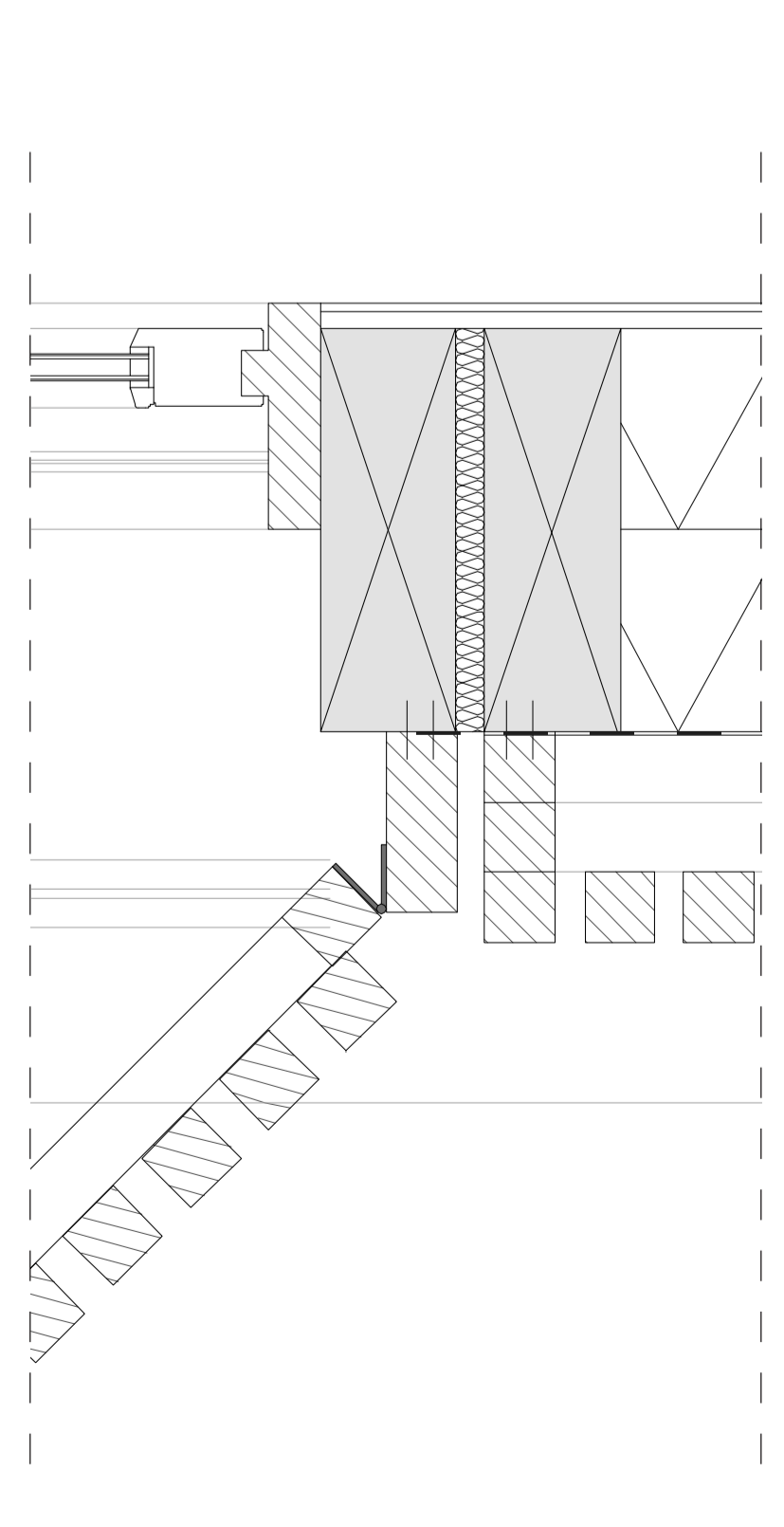
H1 wall end detail

- 1 insulated wall panel, inside to outside:
sheathing
300 mm timber frame element with wood fiber insulation
50 mm vertical timber slats
50 mm horizontal timber slats
vertical timber cladding

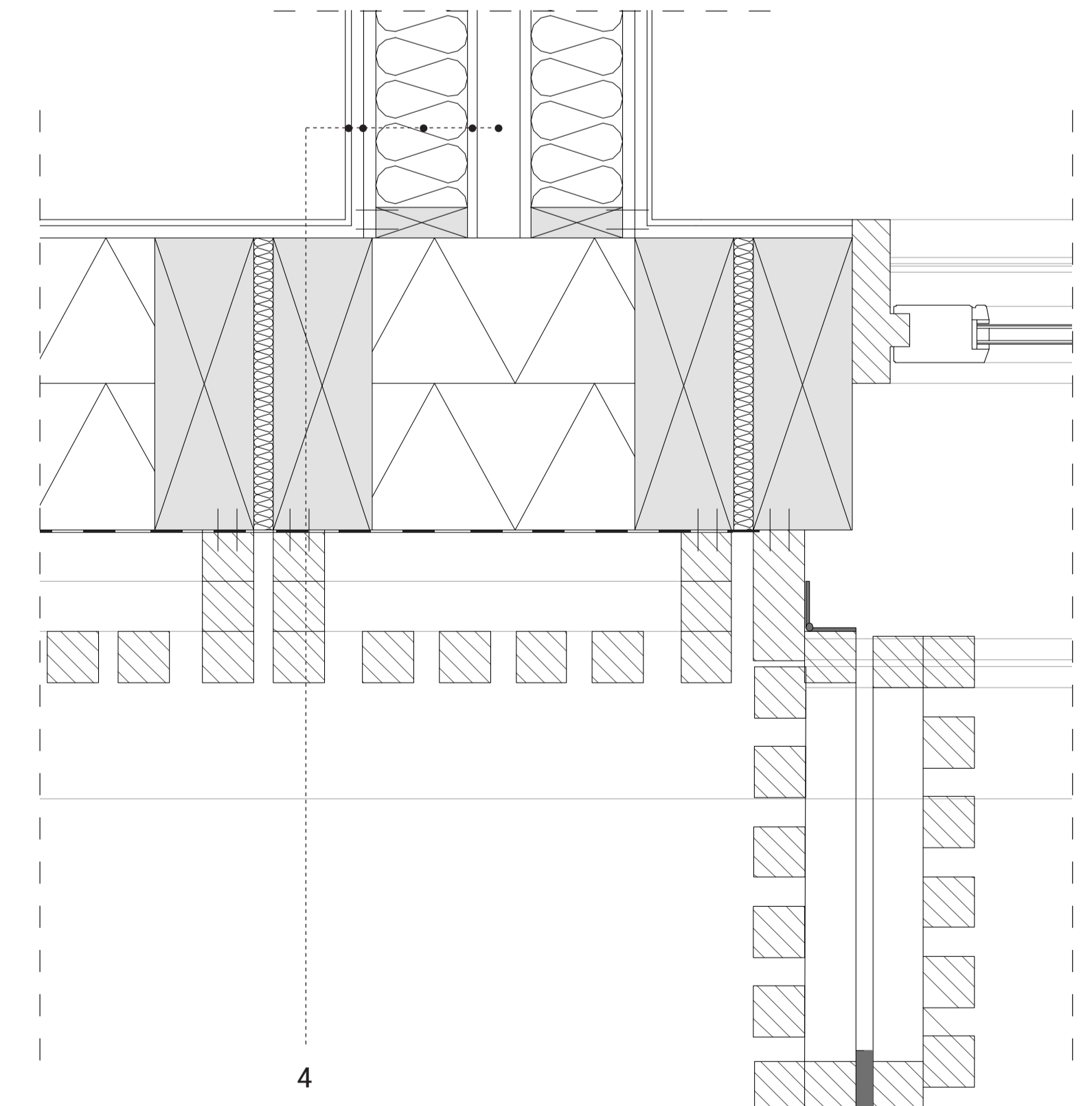


H2 shutter detail

- 2 timber frame window - openable to inside
- 3 hinge



H3 shutter detail



H4 wall end detail

- 4 party wall / double timber frame wall, inside to outside:
50 mm cavity
sheathing
120 mm timber frame with soft wood fibre insulation
2 x 12 mm plasterboard
finishing