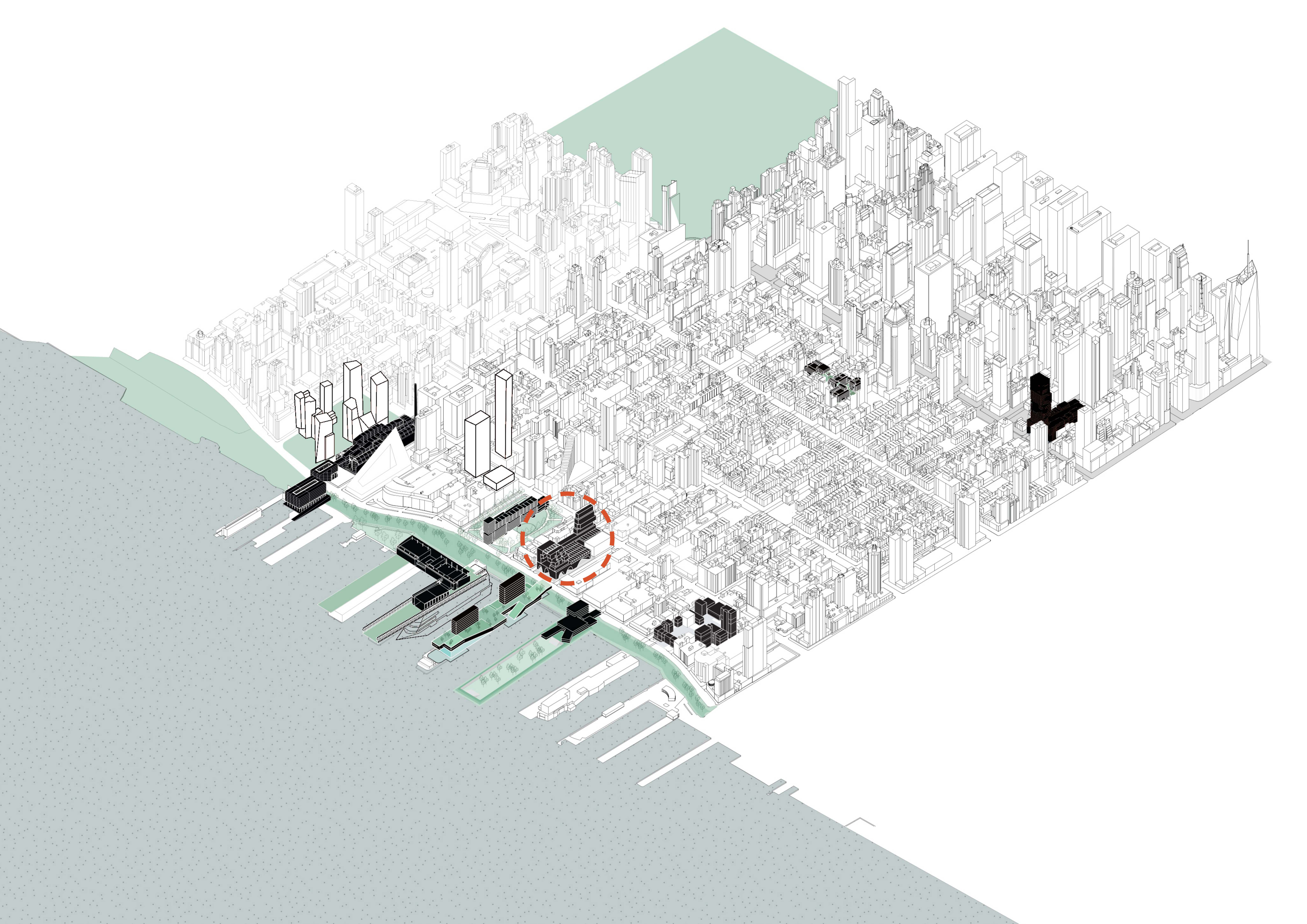


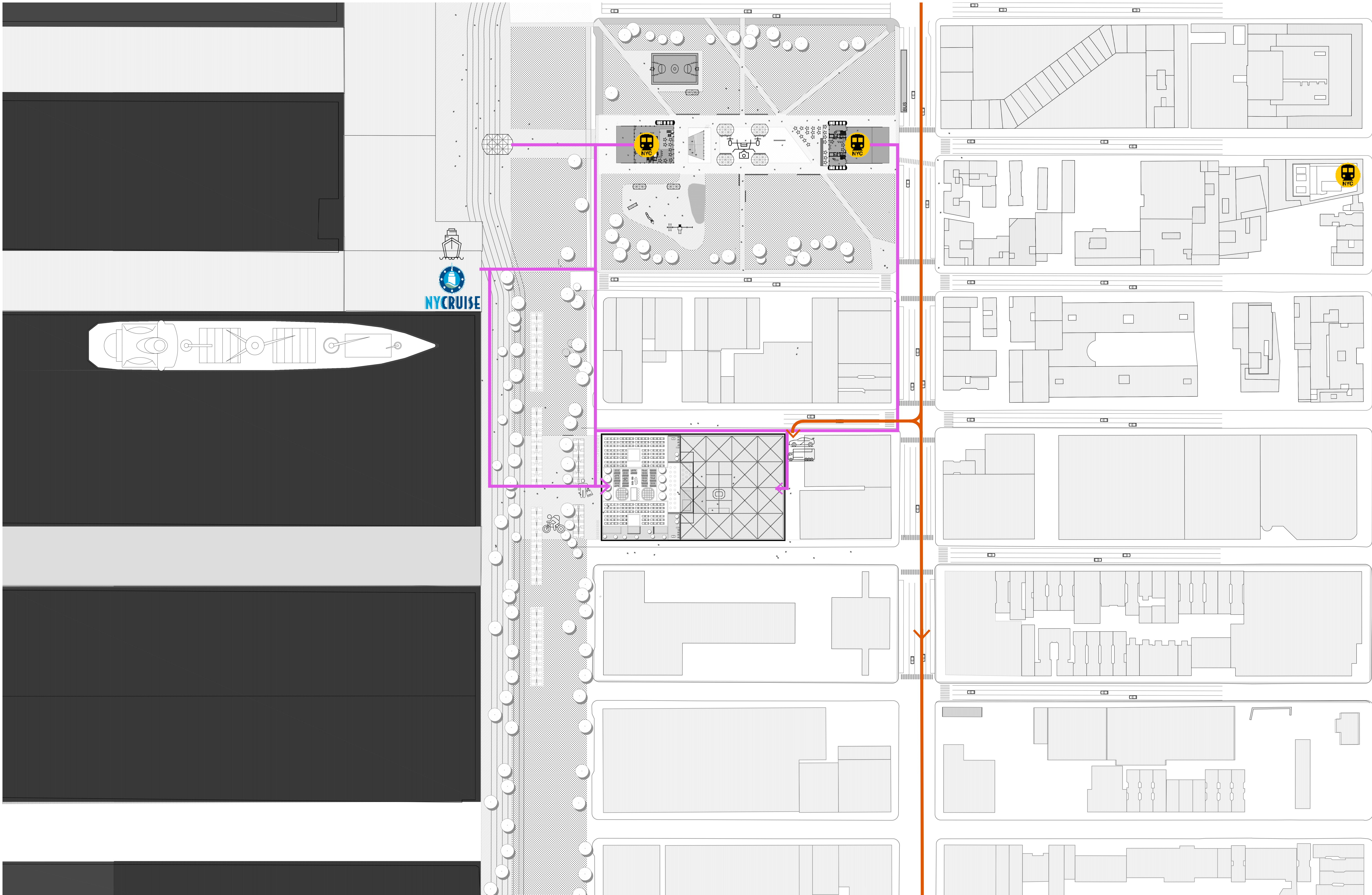
# SIT OPIA

SET OF DRAWINGS  
MARKET AND HOUSING  
IN HELL'S KITCHEN  
BY LYUBOV VILLER



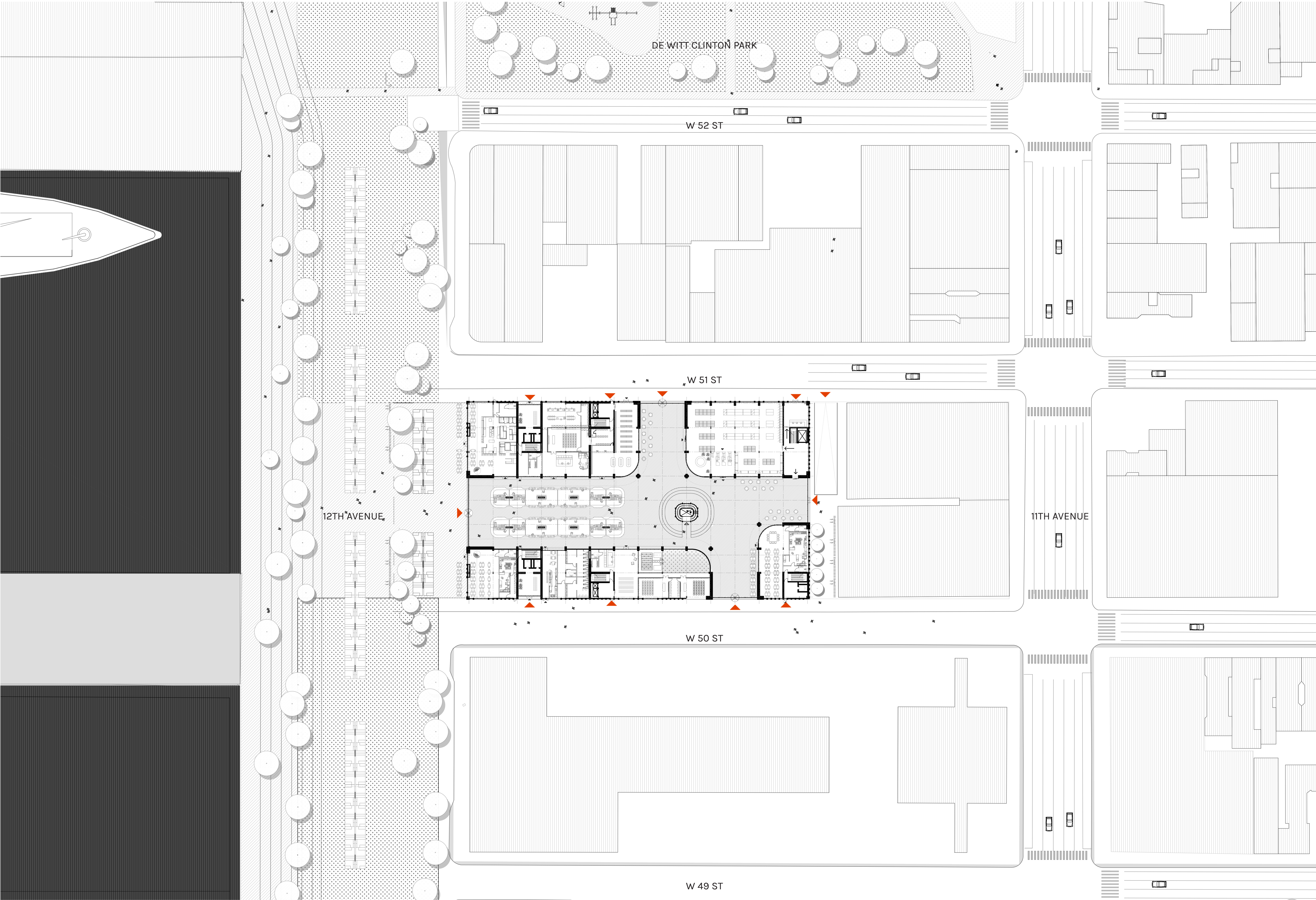






SITEPLAN 1:1000. MAIN APPROACHING ROUTES | LOGISTICS





GROUND FLOOR PLAN 1;500



2 STOREY  
RESIDENT'S PARKING

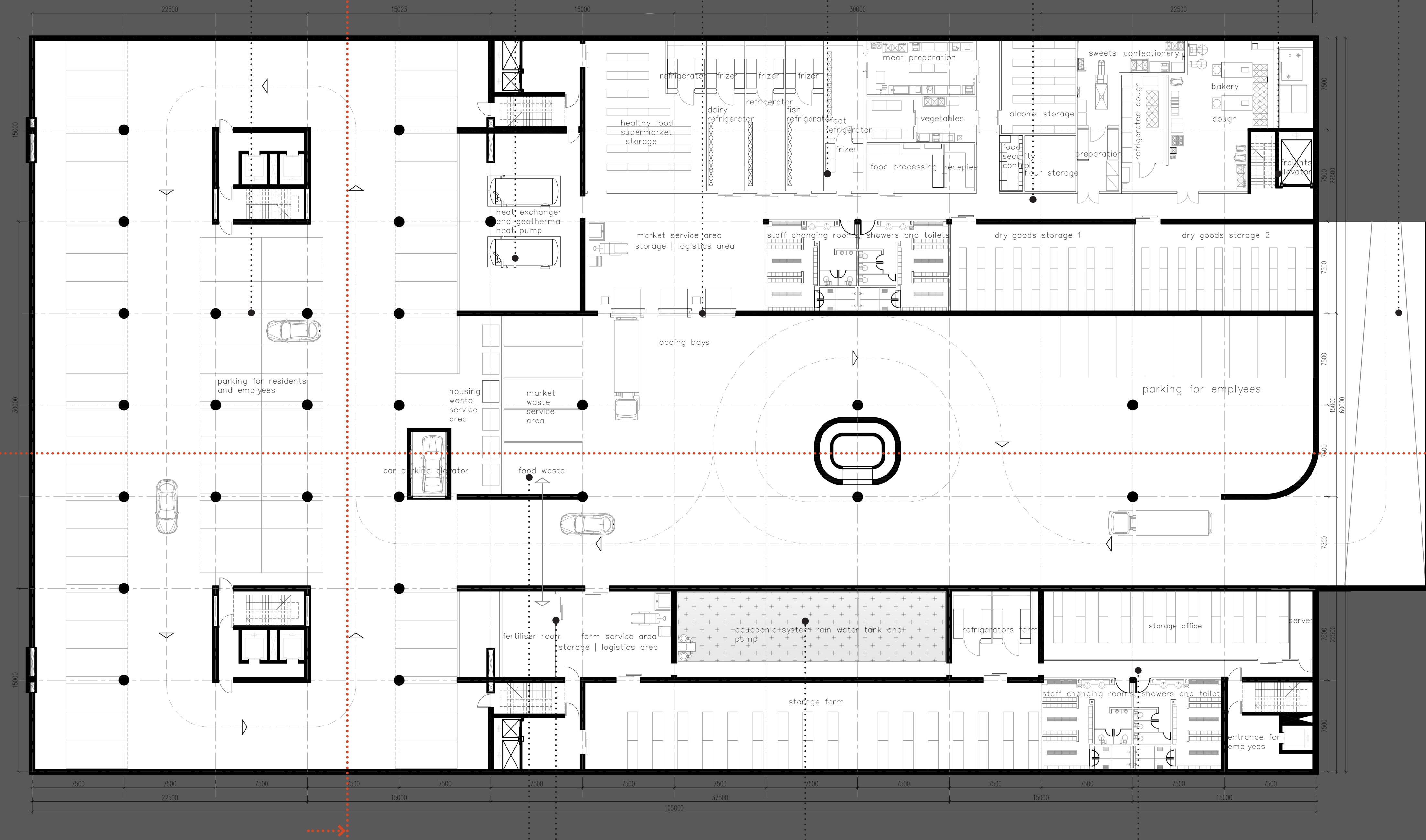
GEOTHERMAL HEAT PUMP  
HEAT EXCHANGER

LOADING BAYS

MARKET FRIDGES

MARKET SERVICE AREA  
AND STORAGE

FREIGHT ELEVATOR RAMP



WASTE COLLECTION  
AREA CONNECTED WITH  
FERTILISER ROOM

RAINWATER TANK

FARM SERVICE AREA, STORAGE,  
CHANGING ROOMS

BASEMENT 1:200. -6.600









RESTAURANT  
MEZZANINE

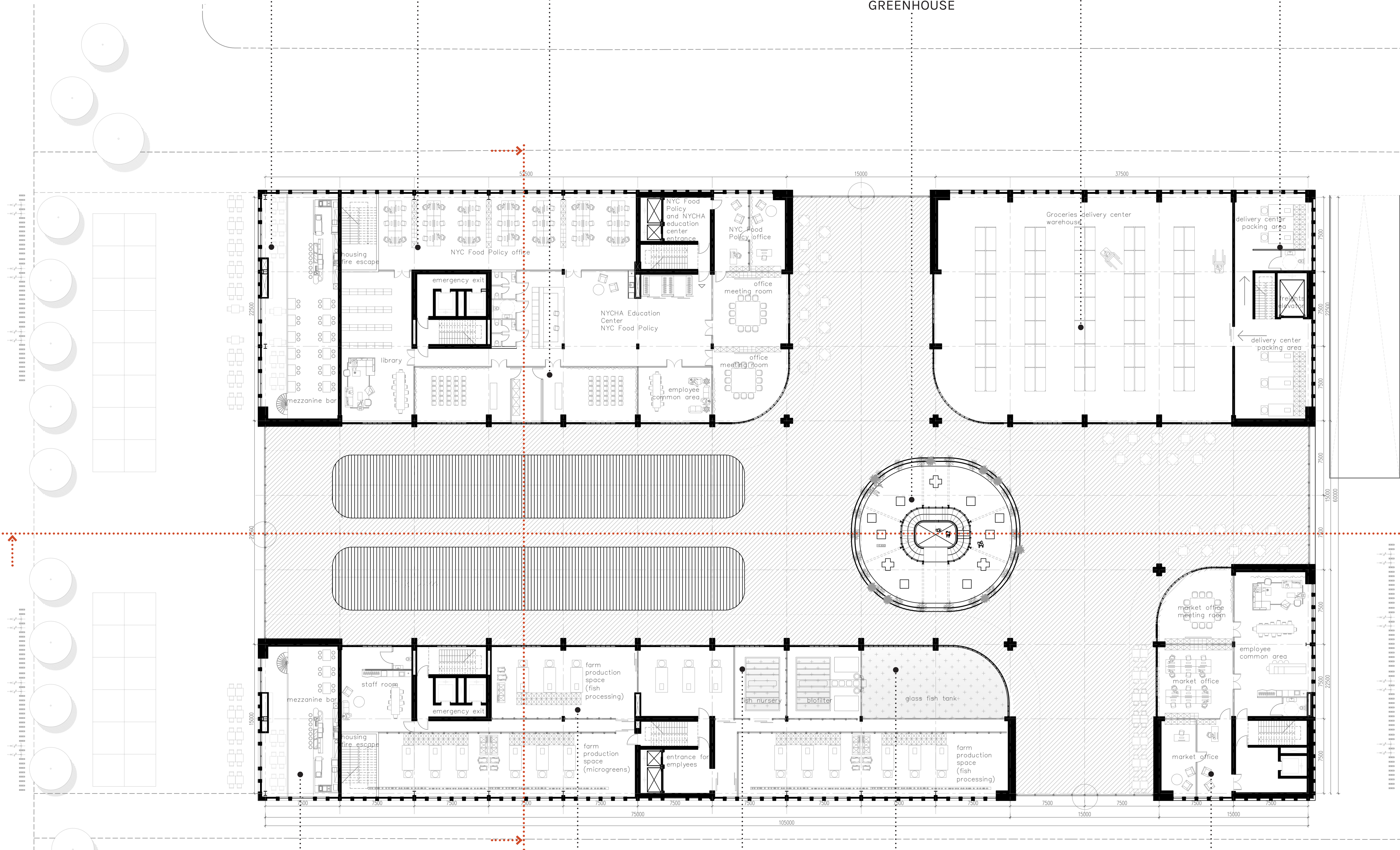
NYC FOOD POLICY  
OFFICE

NUTRITION  
EDUCATION CENTRE  
;

## EXHIBITION PLATFORM CONNECTION WITH THE GREENHOUSE

GROCERIES DELIVERY  
CENTRE

DELIVERY CENTRE  
PACKING



RESTAURANT  
MEZZANINE

## AQUAPONIC FARM FOOD PROCESSING SPACES

BIOFILTER

## FISH TANK

MARKET AND FARM OFFICE

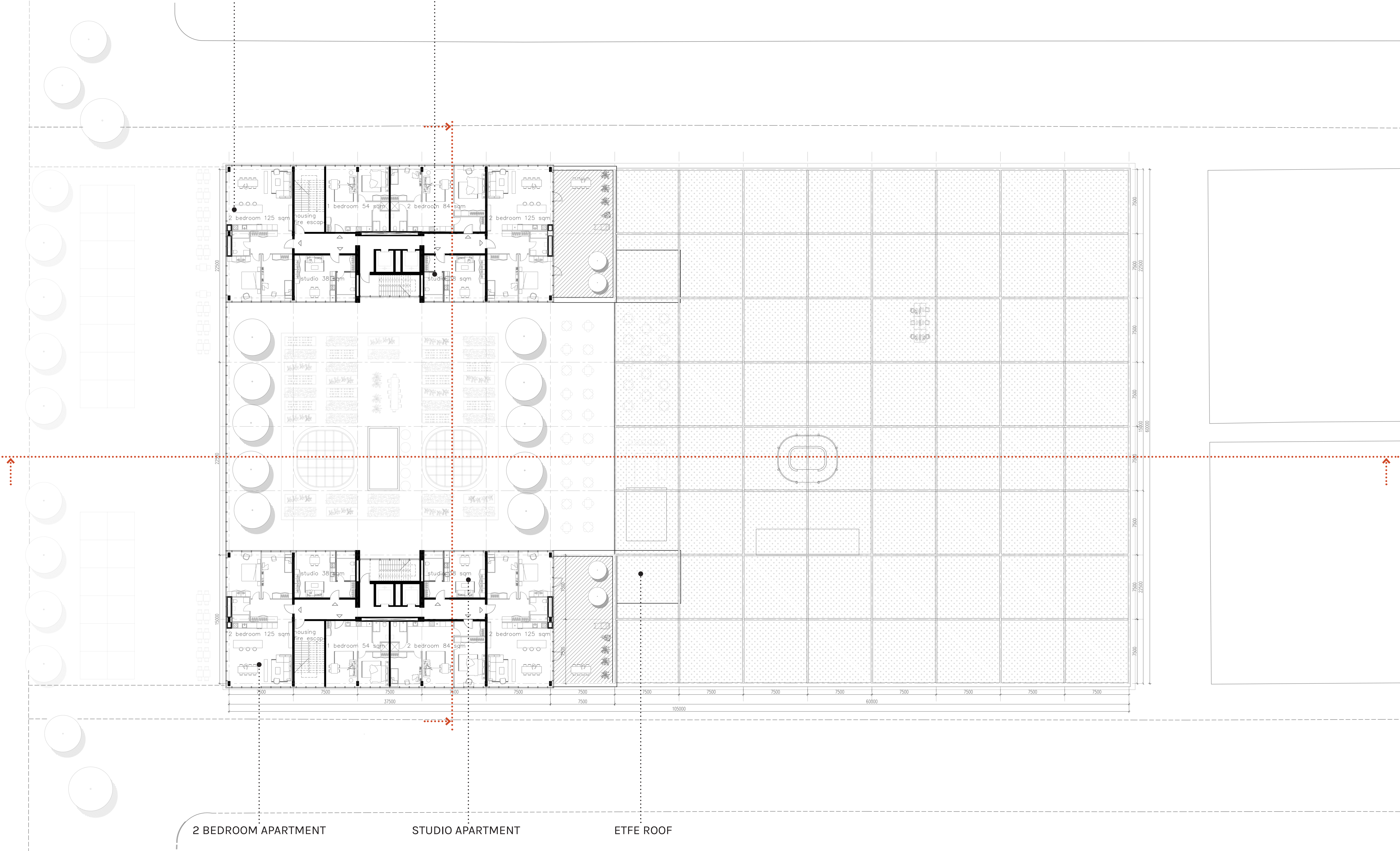
FIRST FLOOR PLAN 1:200. +4.300





2 BEDROOM APARTMENT

STUDIO APARTMENT



2 BEDROOM APARTMENT

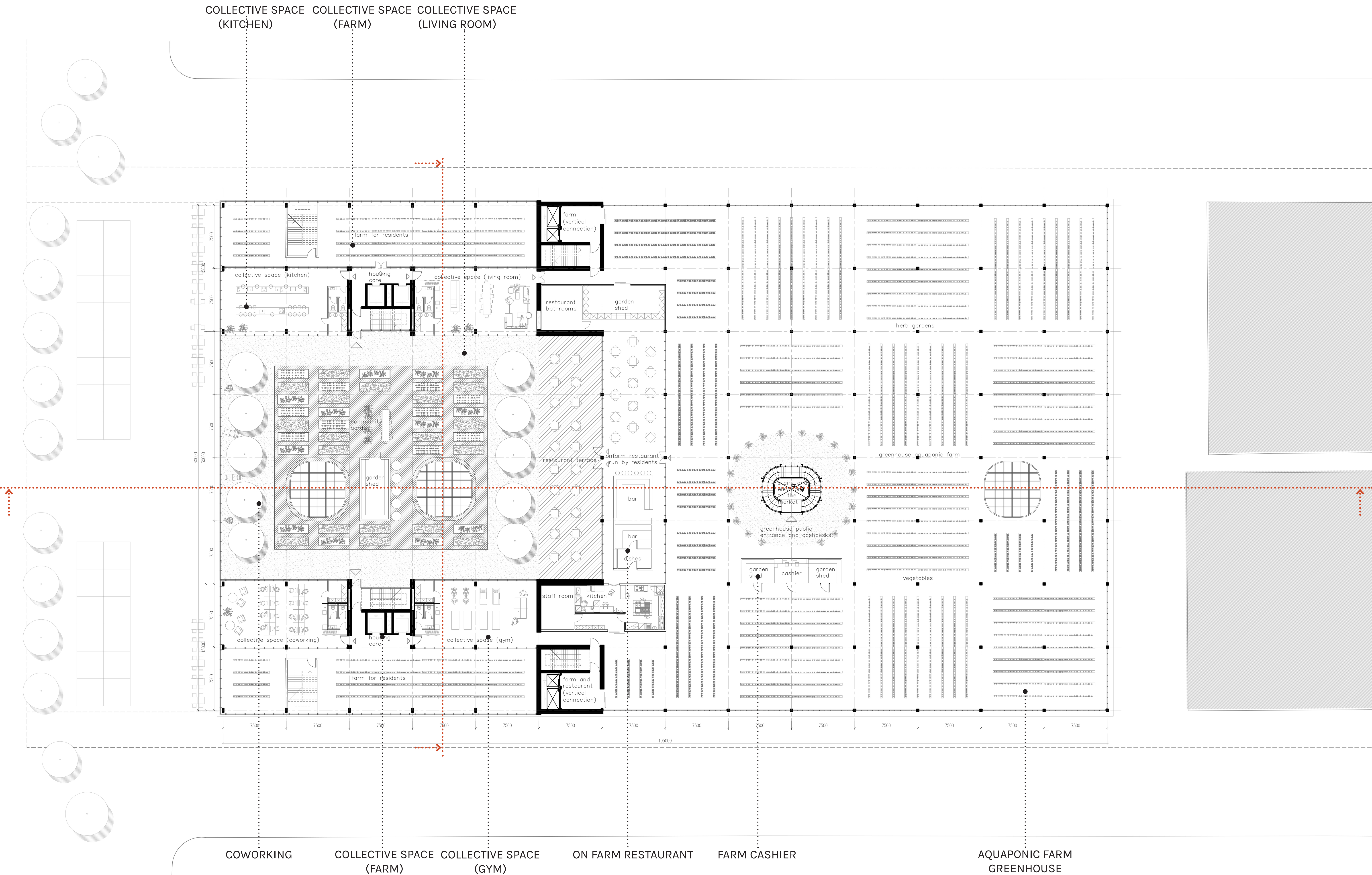
STUDIO APARTMENT

ETFE ROOF

HOUSING AND ETFE ROOF PLAN 1:200. +25.200

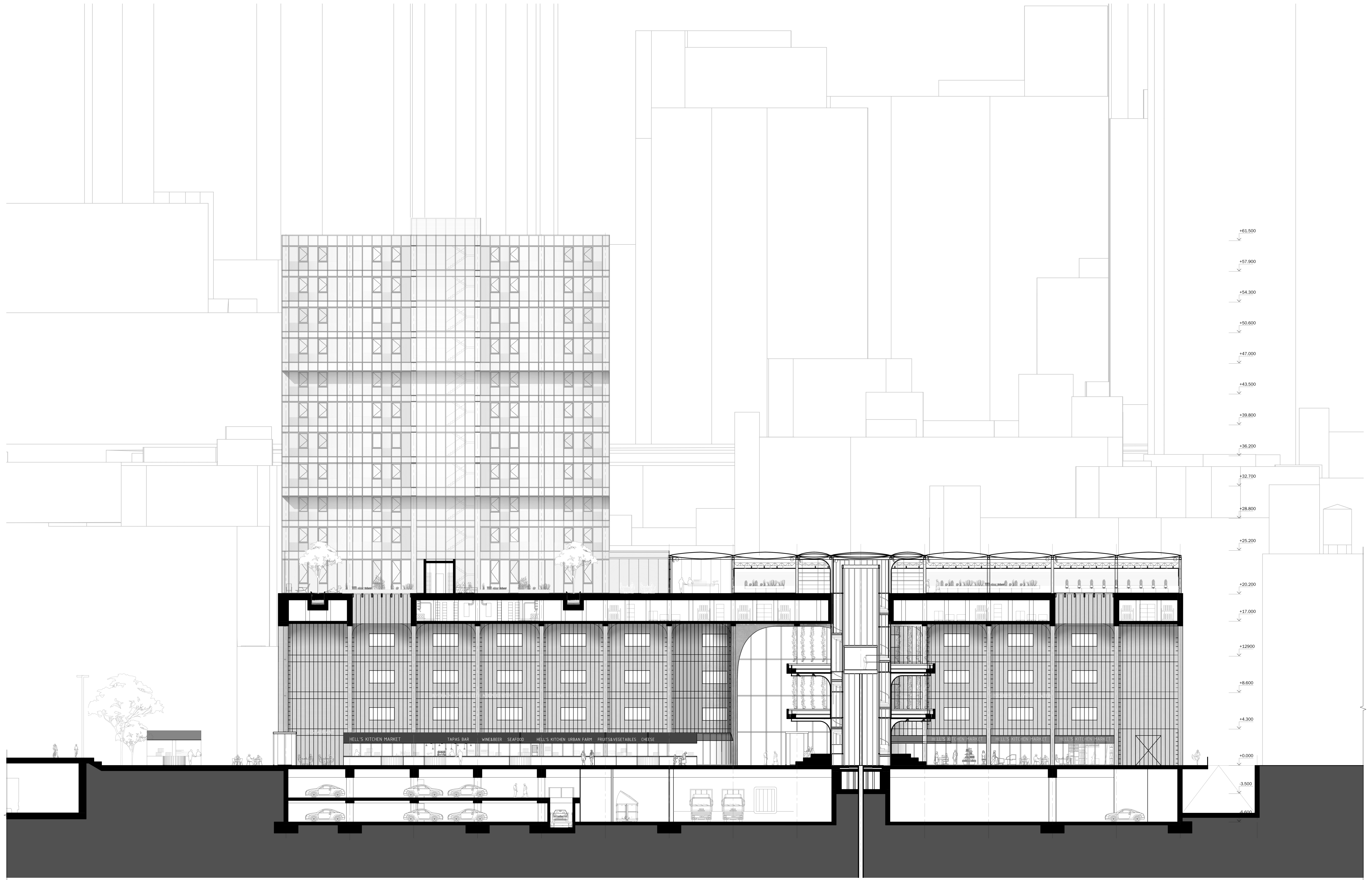






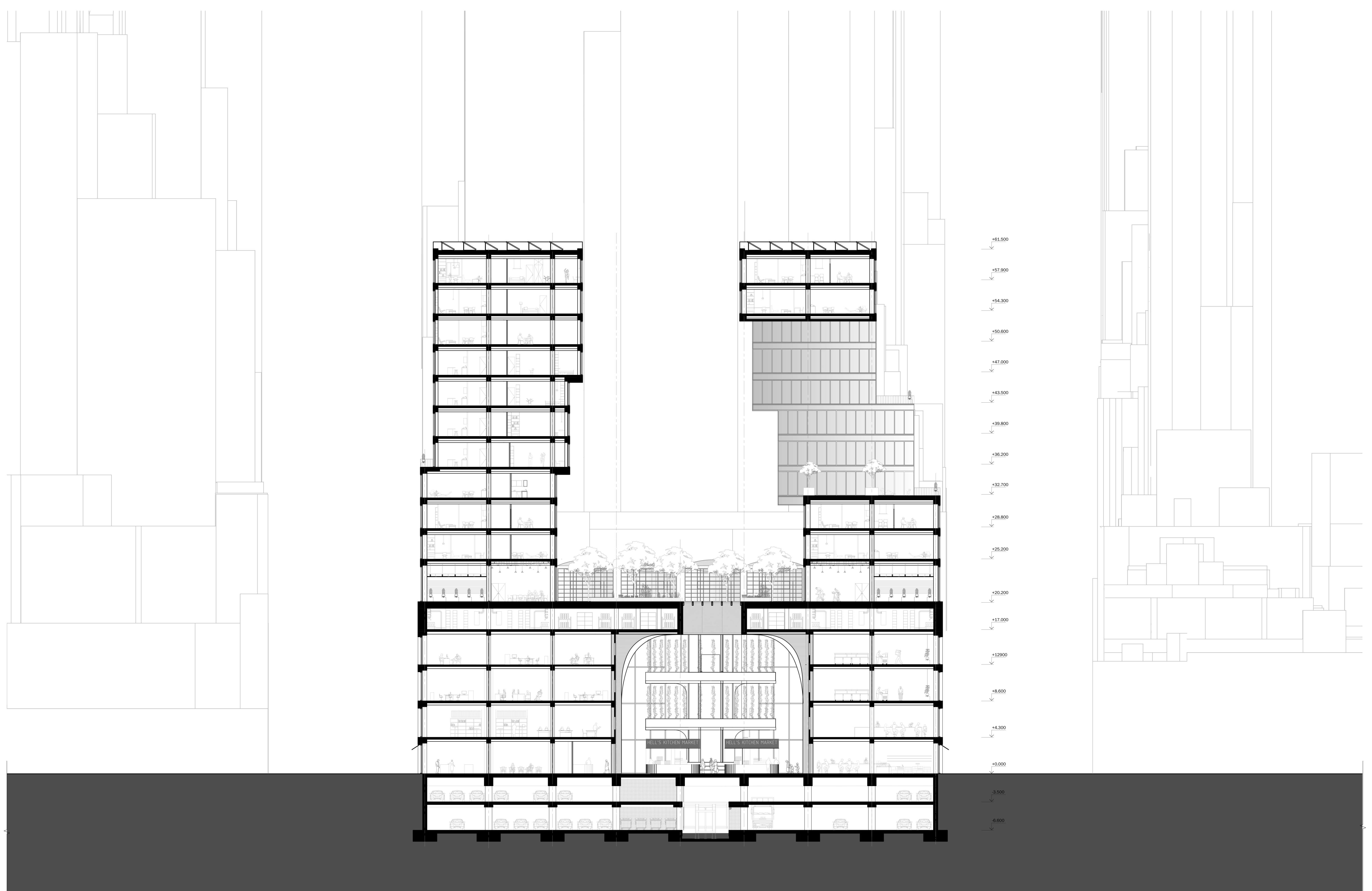
ROOF LEVEL FLOOR PLAN (GREENHOUSE) 1:200. +20.200





LONGITUDINAL SECTION 1:200





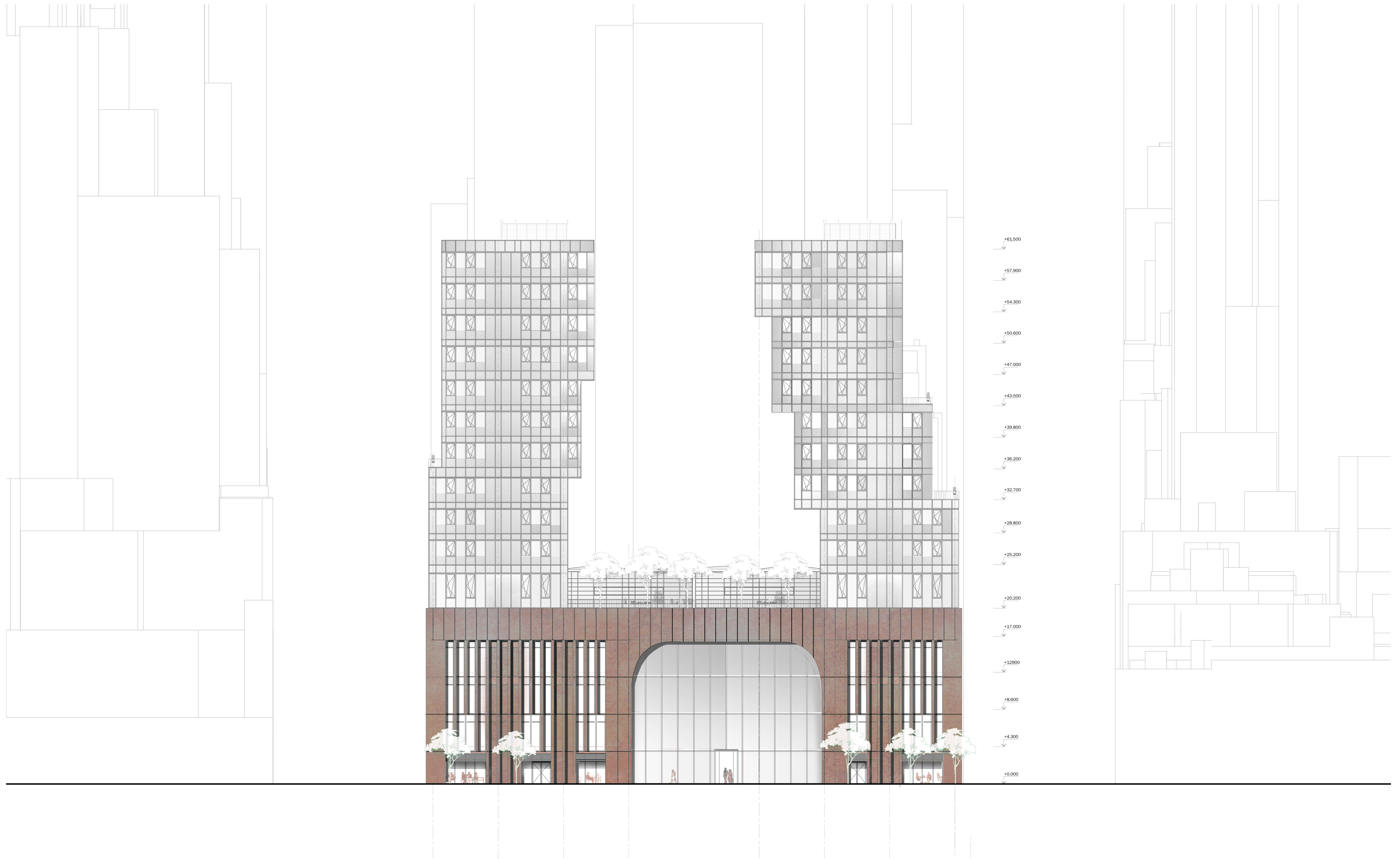
LATITUDINAL SECTION 1:200





SOUTH ELEVATION 1:200





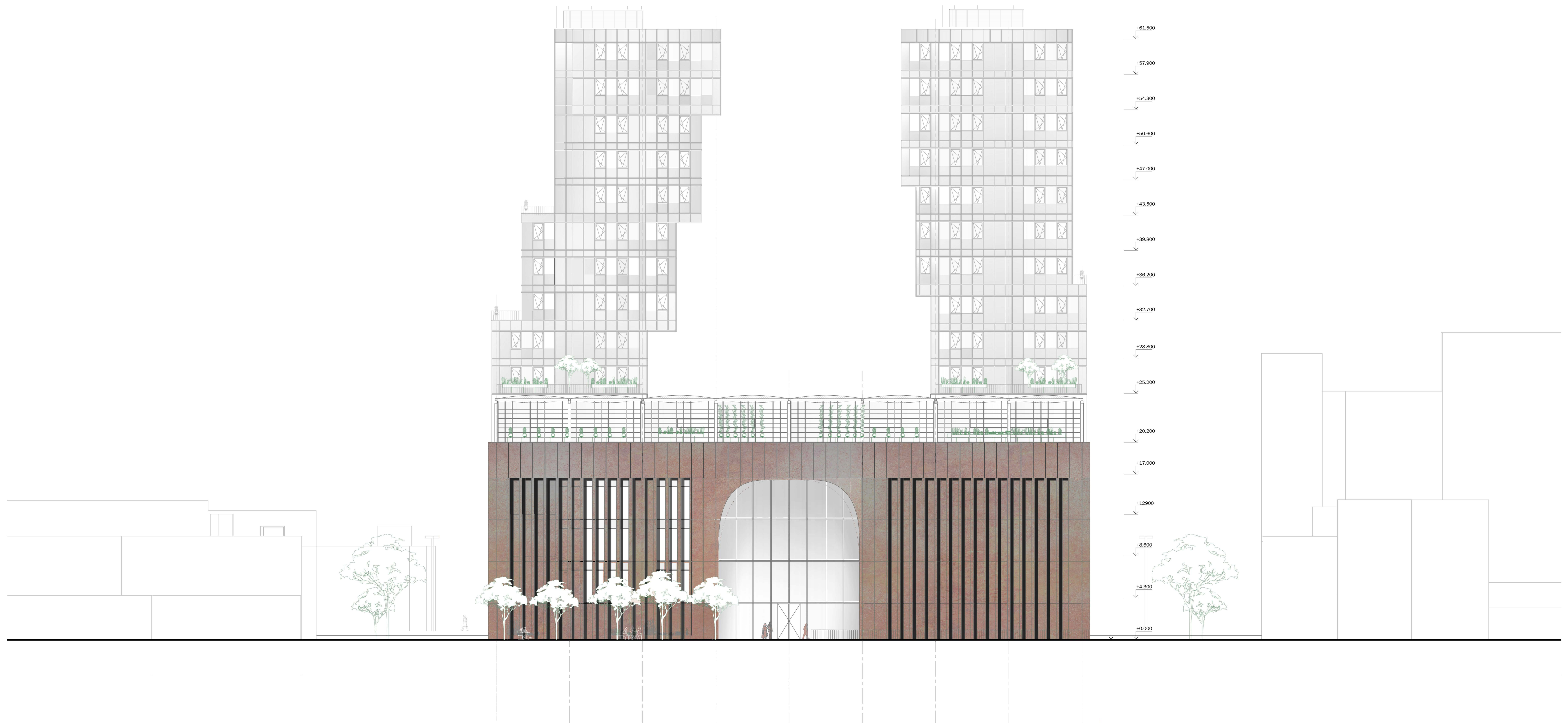
WEST ELEVATION 1:200





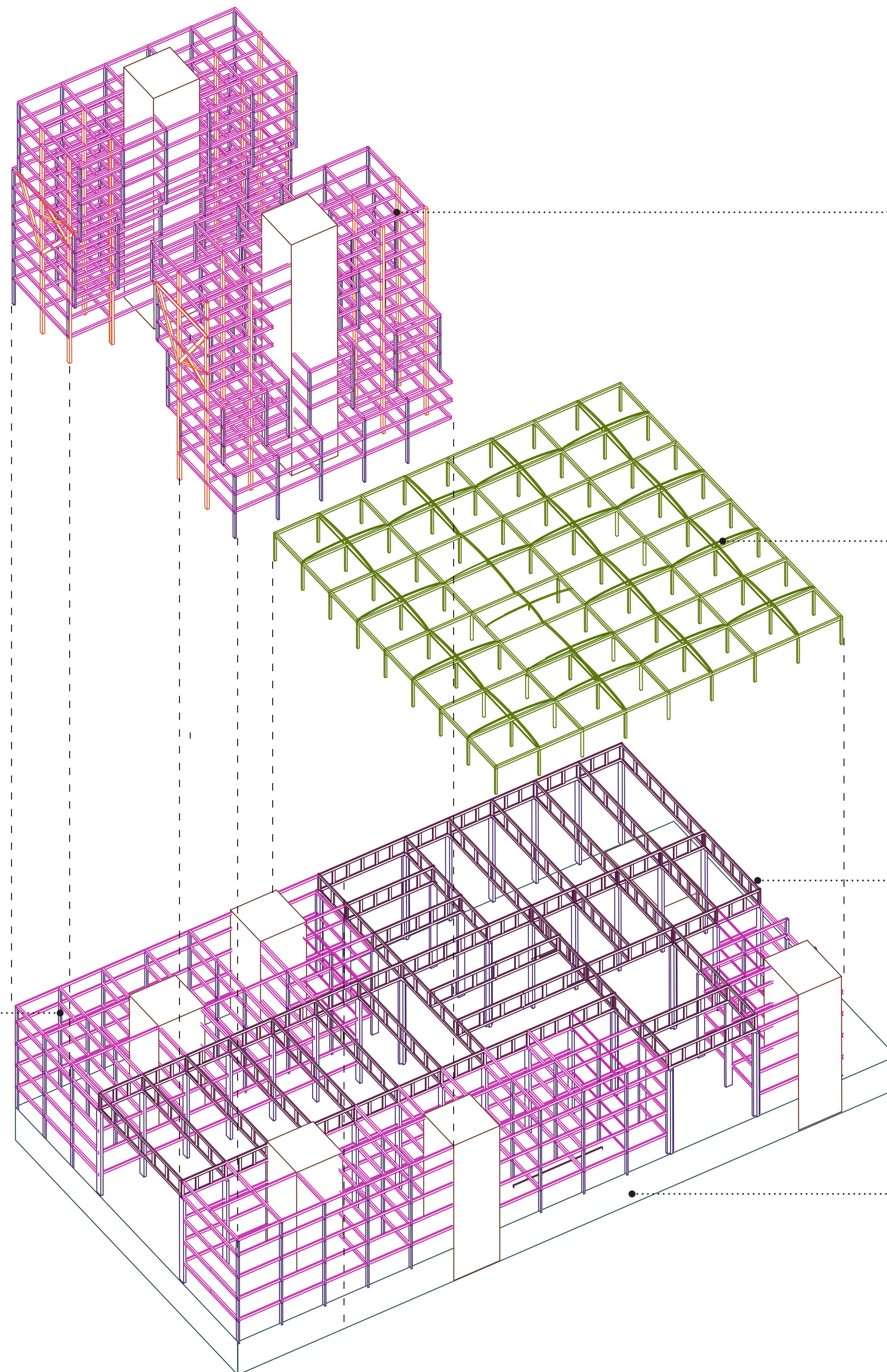
NORTH ELEVATION 1:200





EAST ELEVATION 1:200





HOUSING: FRAME SYSTEM  
I BEAMS AND H BEAM COLUMNS  
GRID 7500X7500, H FLOOR 3600  
MONOLITH CONCRETE CORES  
FOR STABILITY  
DIAGONALS SUPPORT OVERHANGS

GREENHOUSE:  
STEEL FRAME STRUCTURE WITH  
EFTE CUSHIONS. GRID  
7500X7500, H 5000

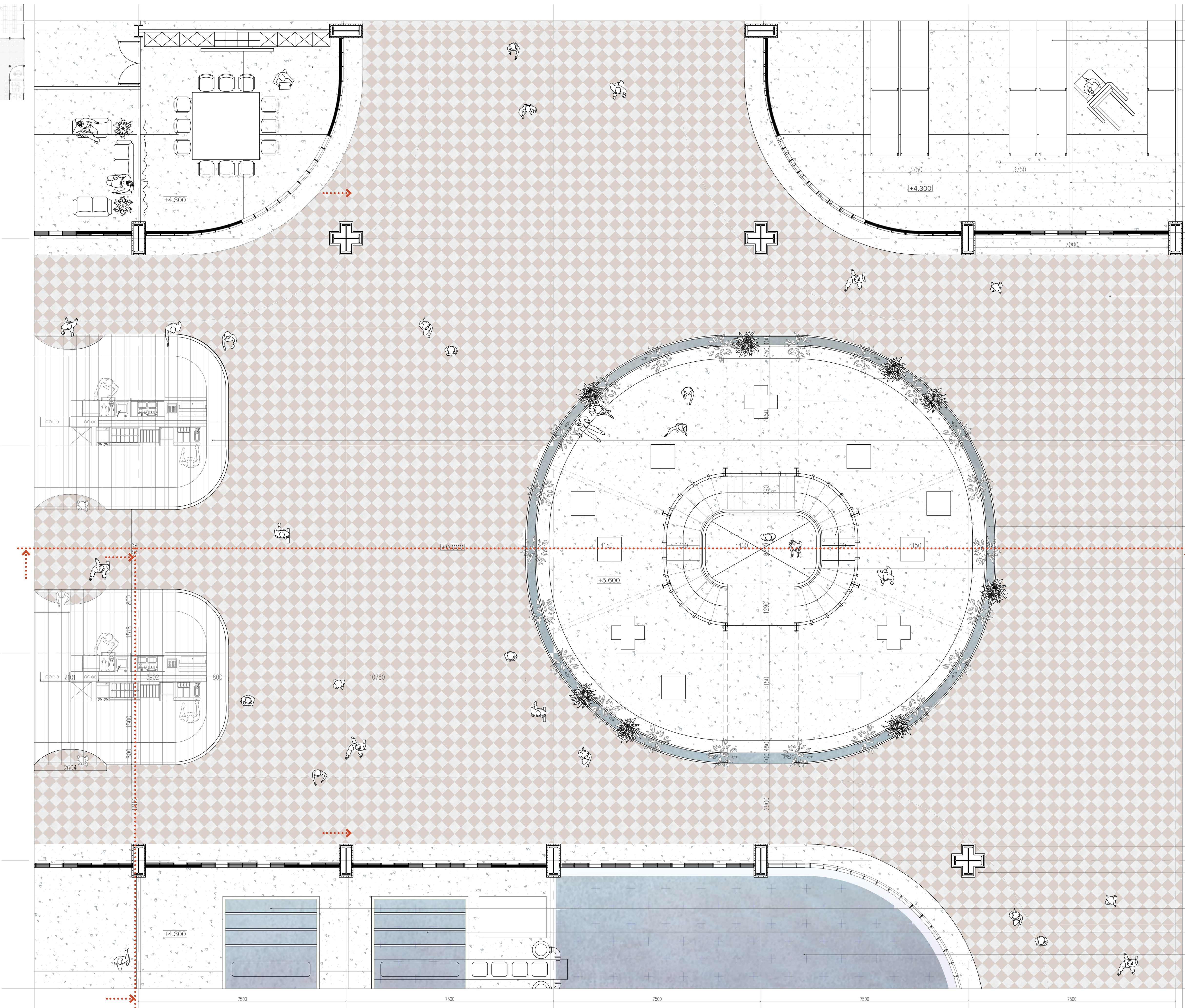
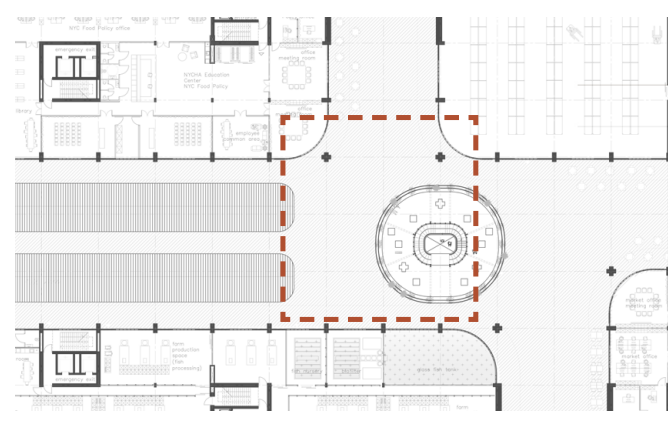
MARKET:  
STEEL I BEAM COLUMNS H 16500  
MARKET ROOF| SERVICE FLOOR:  
SYSTEM OF STEEL TRUSSES  
VIERENDEEL TRUSSES.  
MAXIMUM SPAN 22500. H 3500

BASEMENT:  
MONOLITH CONCRETE WALLS,  
CONCRETE COLUMNS R 800  
REINFORCED CONCRETE BEAMS H 1000  
(FOR MAX SPANS)

PRODUCTION SPACES:  
FRAME SYSTEM  
I BEAMS AND H BEAM COLUMNS  
GRID 7500X7500, H FLOOR 4300  
MONOLITH CONCRETE CORES  
FOR STABILITY

LOADBEARING STRUCTURE



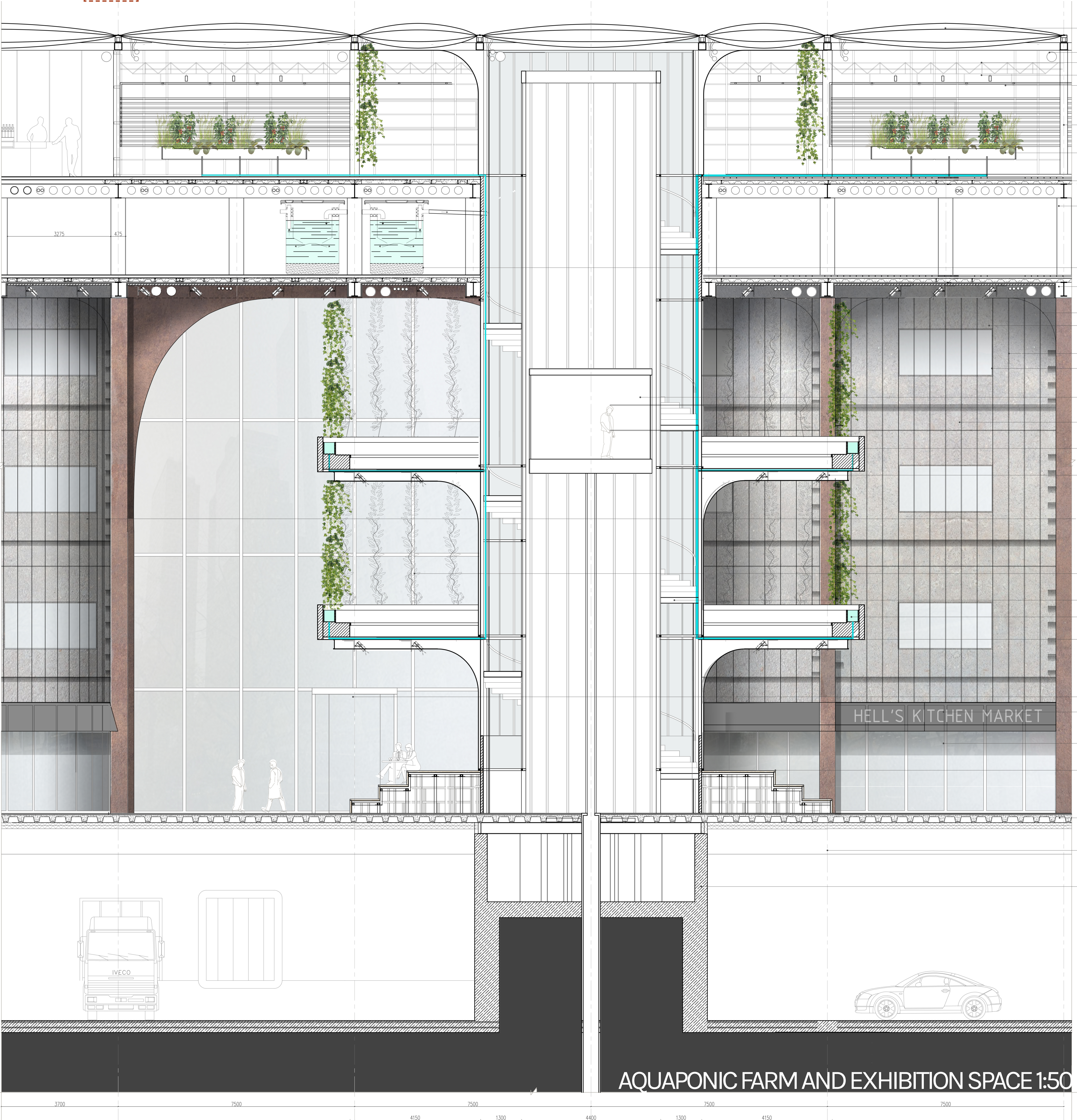
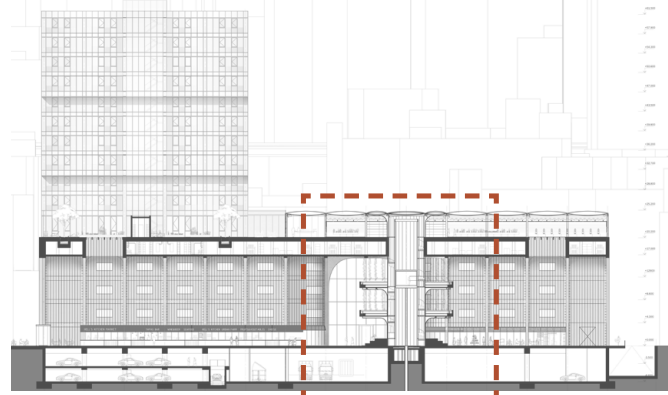


- e-commerce delivery center
- NYCHA education center and NYC Food Policy office
- curtain wall facade system
- polished cast-in-place concrete floor metal seam
- aluminum window frames with single glazing
- typical market space facade panel
- floor tiles
- balustrade with planter and a bench exhibition space platform
- market stalls with kitchens and installations in the columns
- platform steel structure
- spiral metal stairs
- aquaponic soil free planters
- moving platform in glass enclosure
- I beam column with metal cladding
- cross shaped steel column with metal cladding
- fish nursery (part of aquaponic farm)
- biofilter (part of aquaponic farm)
- fish tank (part of aquaponic farm) aquarium thick glass

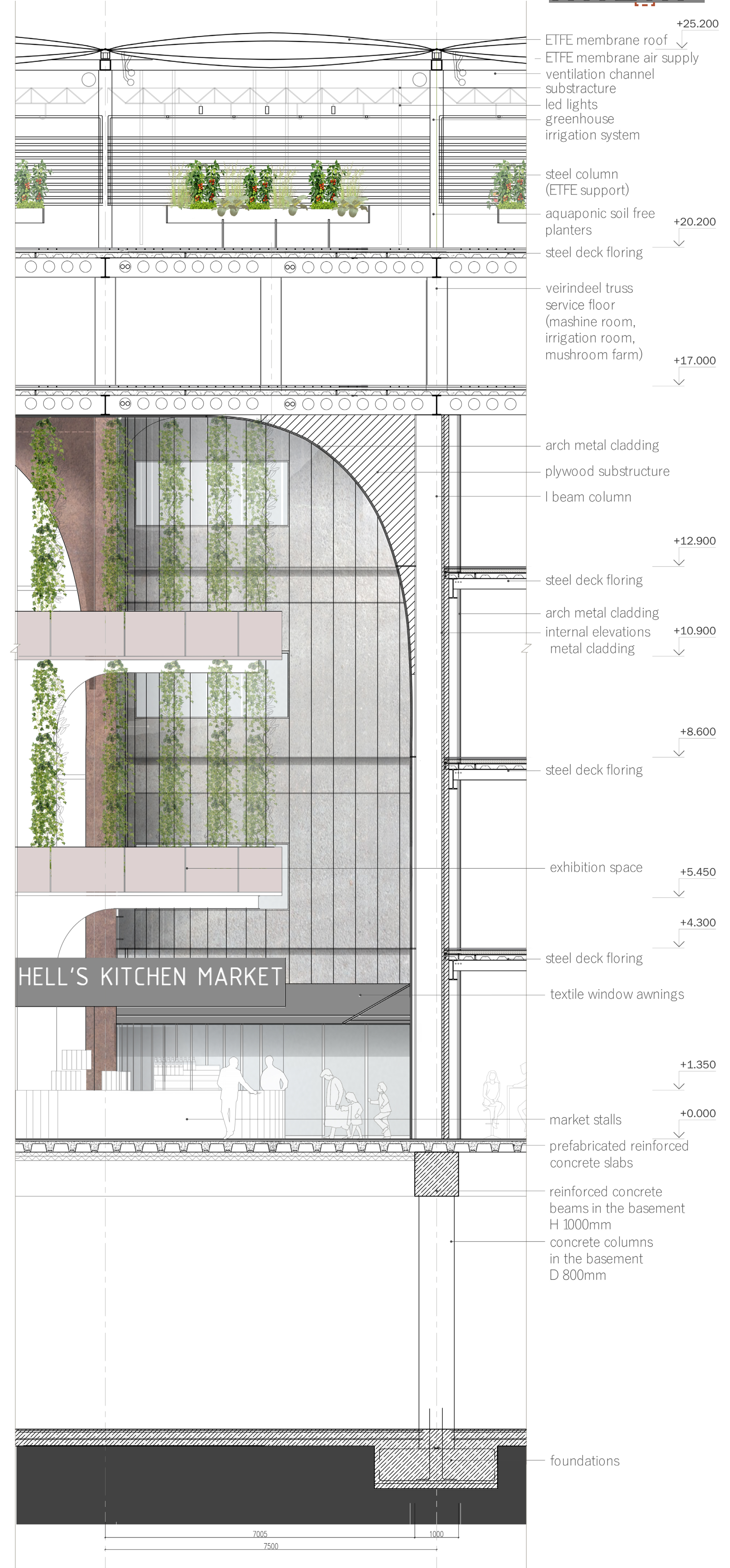
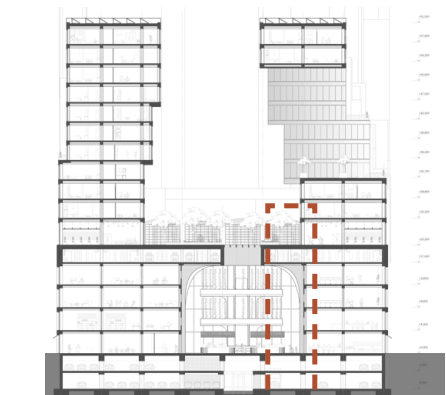
FIRST FLOOR FRAGMENT 1:50





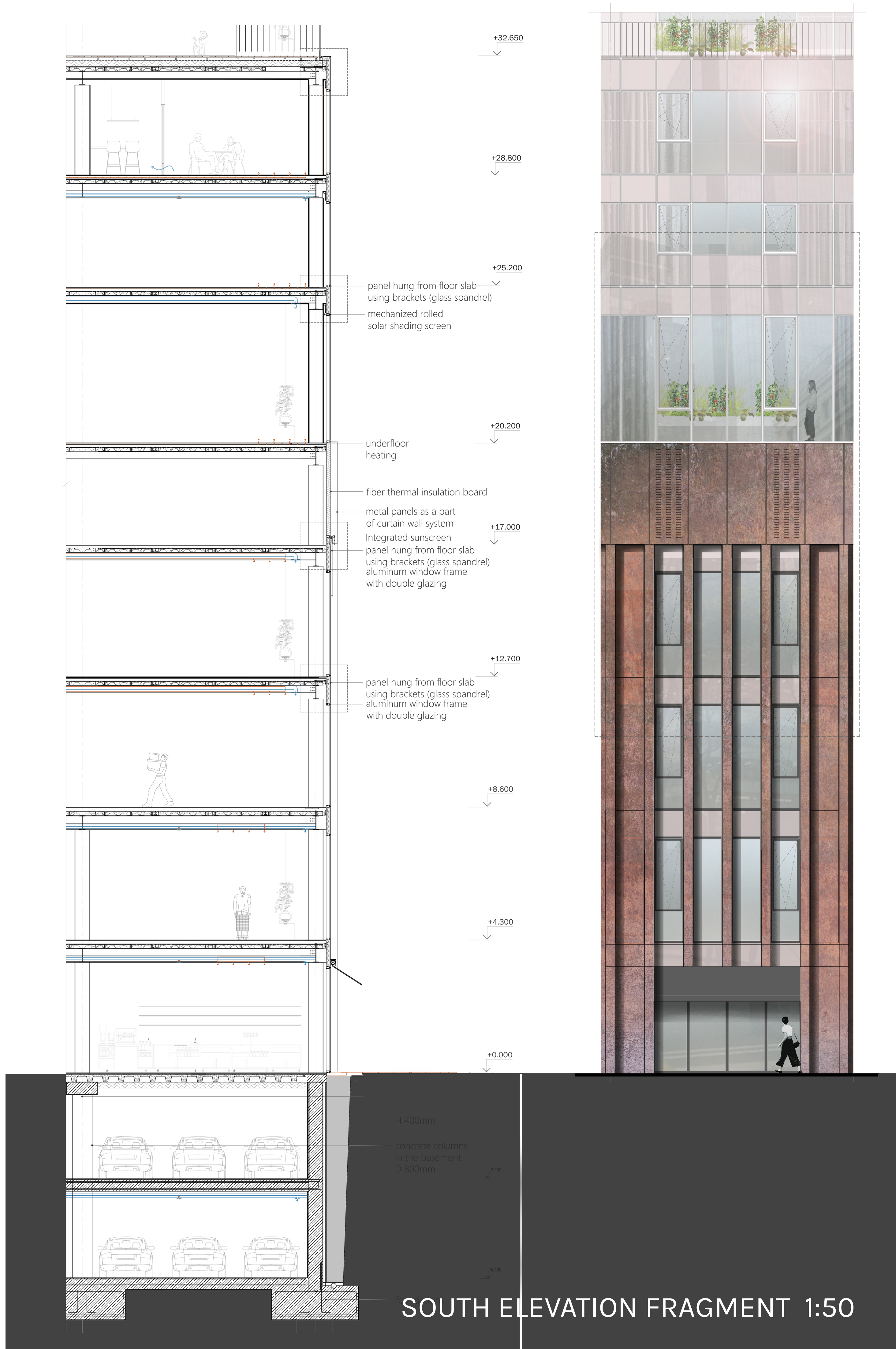
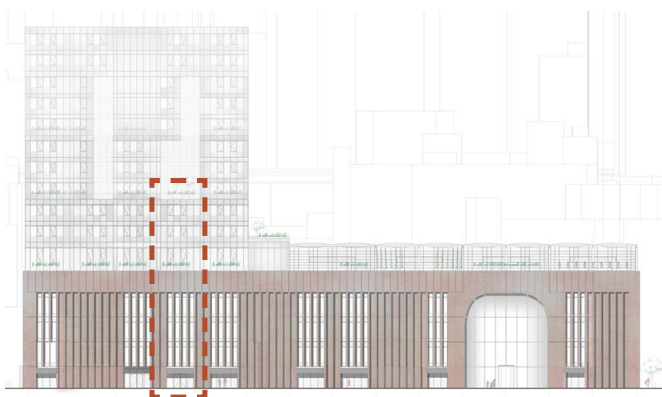


- ETFE membrane roof
- ETFE membrane air supply
- ventilation channel
- substructure
- led lights
- greenhouse
- irrigation system
- steel column (ETFE support)
- aquaponic soil free planters
- steel deck flooring
- veirindeel truss service floor (mashine room, mushroom farm)
- irrigation system
- acoustic panels and space for and installations
- vault
- typical market space facade panel
- metal panel
- aluminum window frames with single glazing
- moving platform in glass enclosure
- glass spandrel
- balustrade with plantes and a bench
- exhibition space platform steel structure
- curved glass interior curtain wall panels with glass spandrels
- curtain wall facade system
- spiral metal stairs
- aquaponic soil free planters plumbing
- revolving doors
- textile window awnings
- open ground floor glazing
- tribune steel structure plywood panels
- prefabricated reinforced concrete slabs
- reinforced concrete beams in the basement H 1000mm
- concrete walls in the basement



- ETFE membrane roof
- ETFE membrane air supply
- ventilation channel
- substructure
- led lights
- greenhouse
- irrigation system
- steel column (ETFE support)
- aquaponic soil free planters
- steel deck flooring
- veirindeel truss service floor (mashine room, irrigation room, mushroom farm)
- arch metal cladding
- plywood substructure
- I beam column
- steel deck flooring
- arch metal cladding
- internal elevations
- metal cladding
- steel deck flooring
- exhibition space
- steel deck flooring
- textile window awnings
- market stalls
- prefabricated reinforced concrete slabs
- reinforced concrete beams in the basement H 1000mm
- concrete columns in the basement D 800mm
- foundations



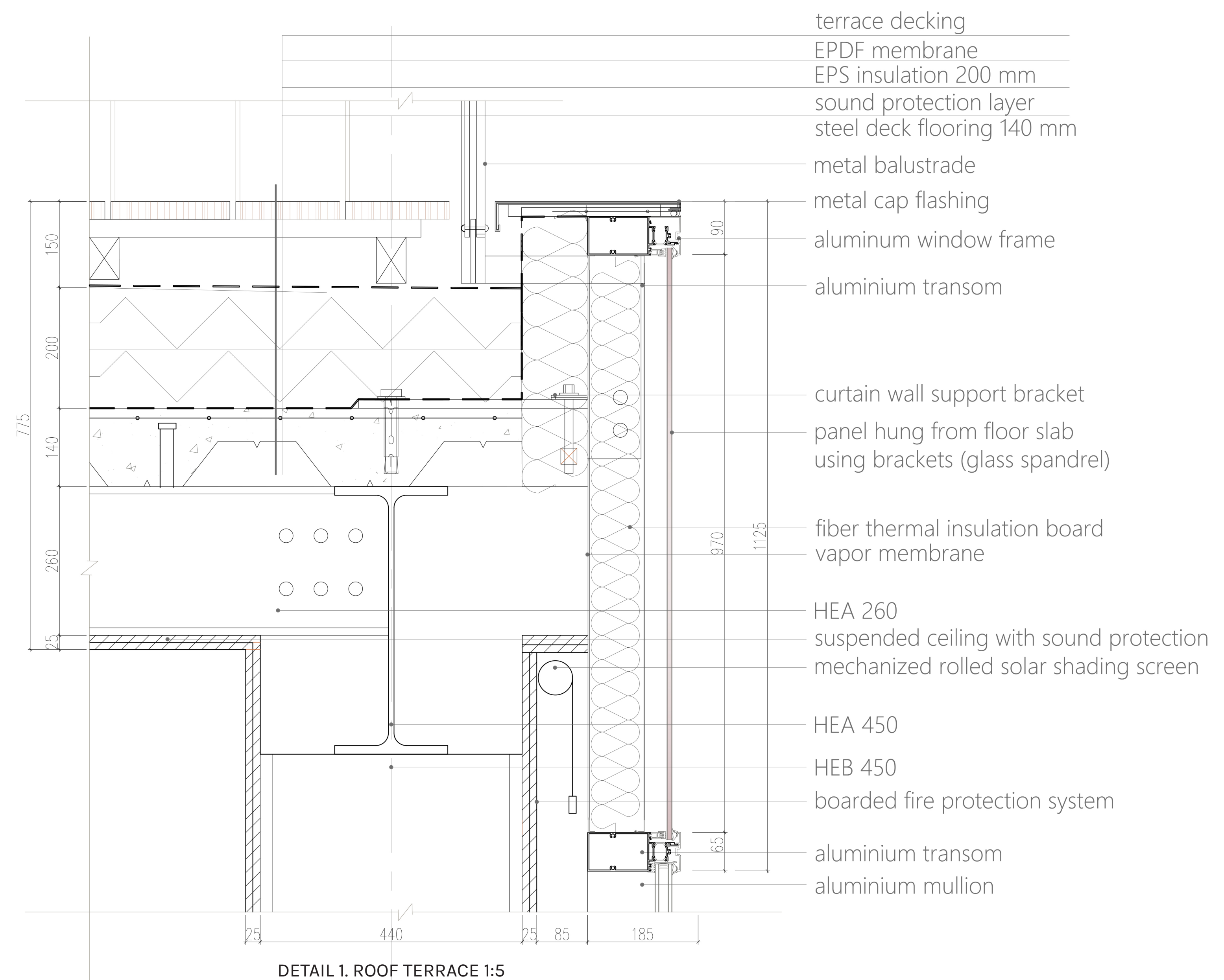
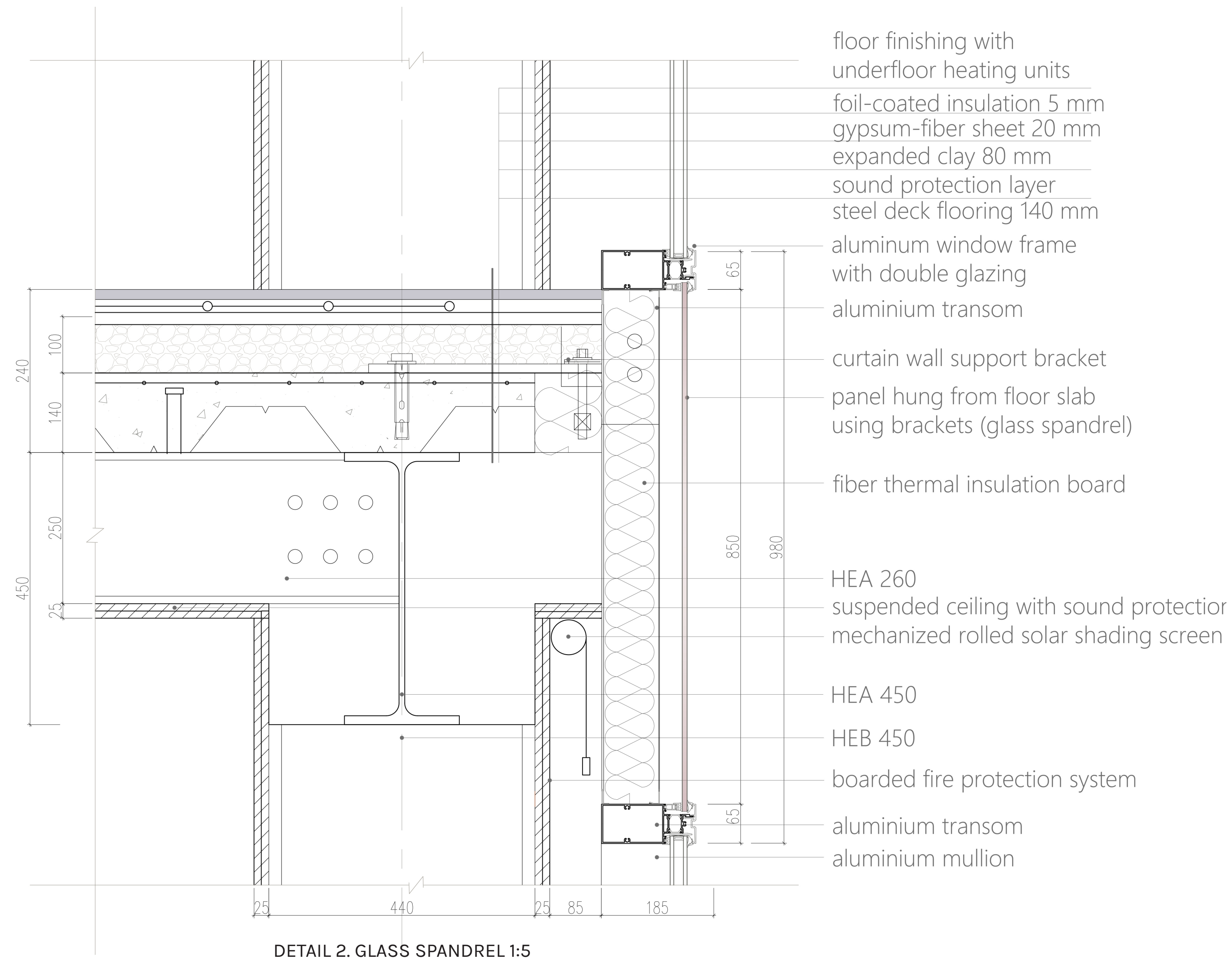






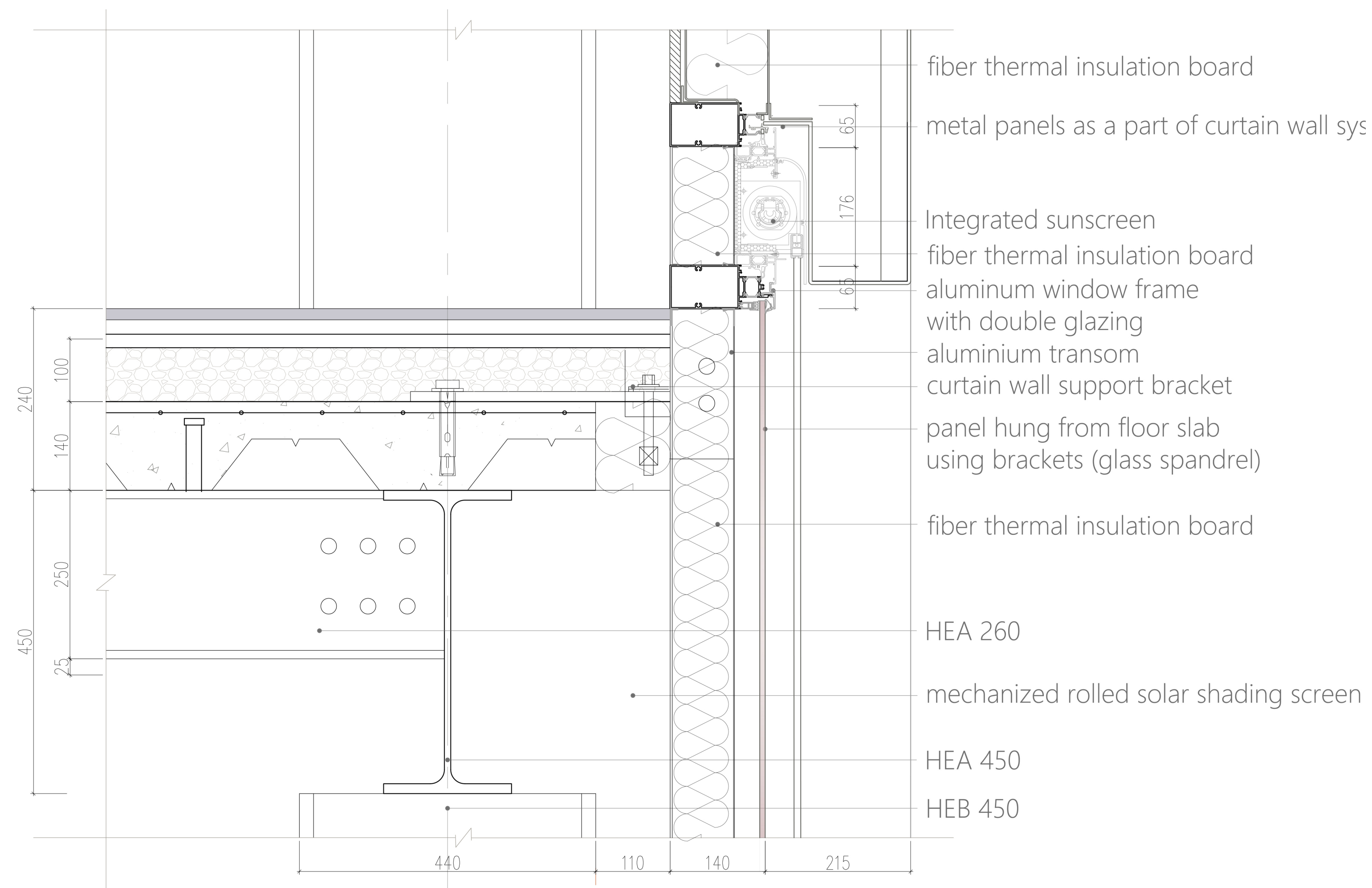
INTERIOR ELEVATION 1:20



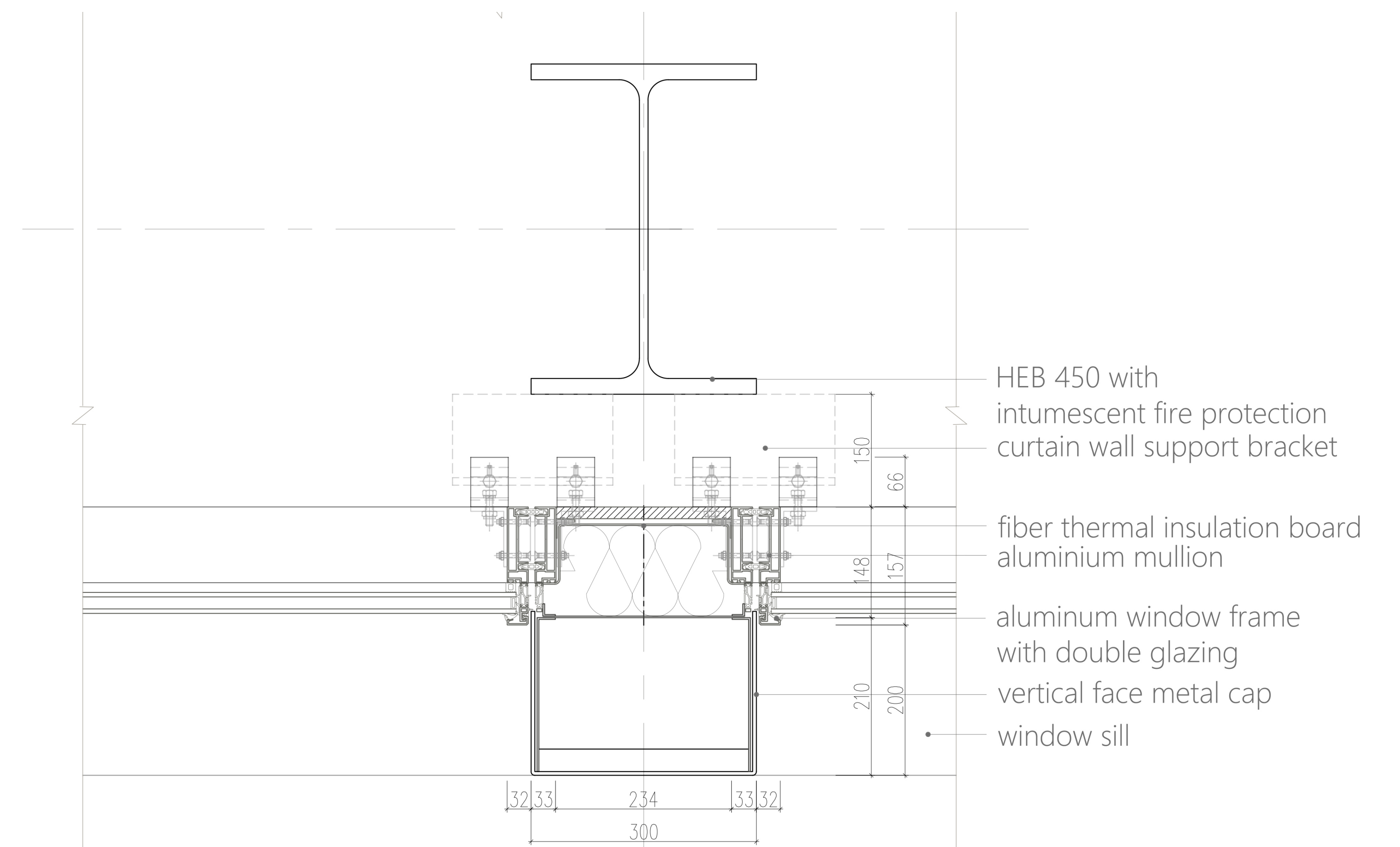


## FACADE DETAILS 1:5





DETAIL 3. METAL CLADDING 1:5



DETAIL 4. HORIZONTAL DETAIL 1:5