



16



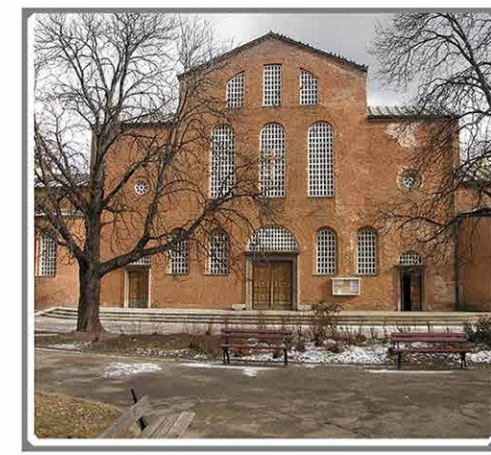
17



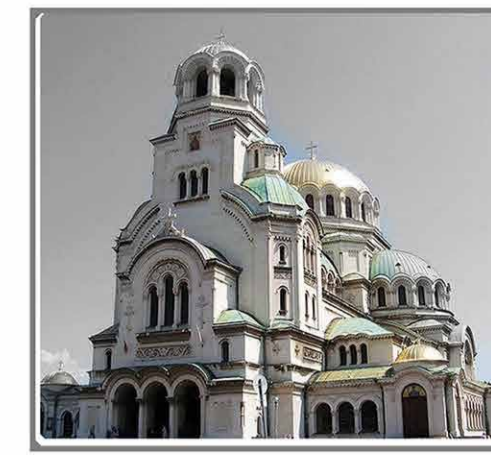
15



10



8



6



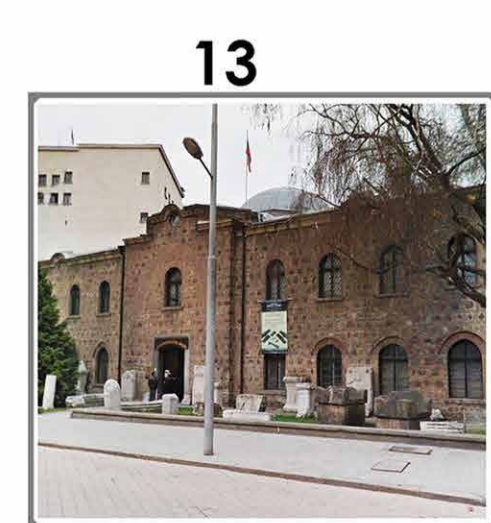
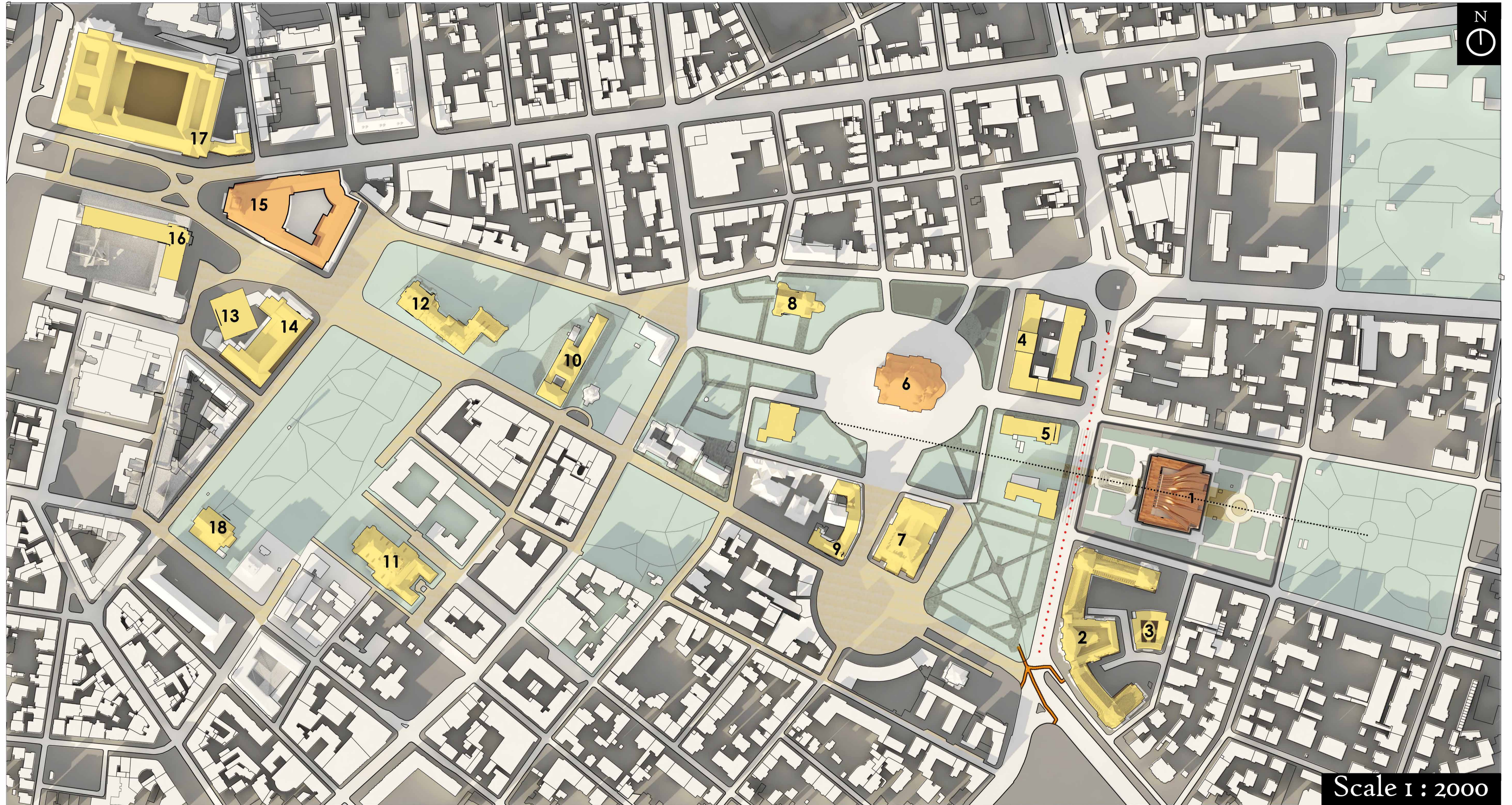
5



4



1



13



14



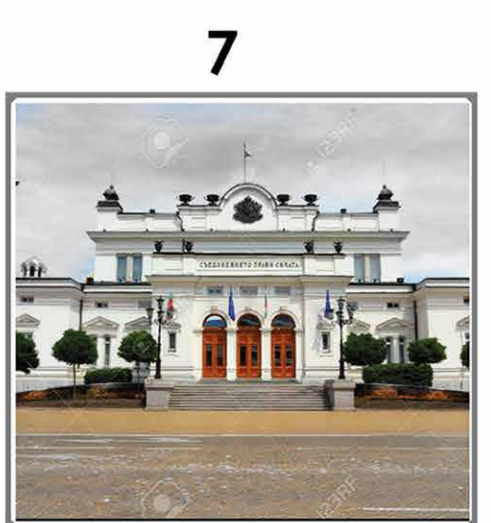
11



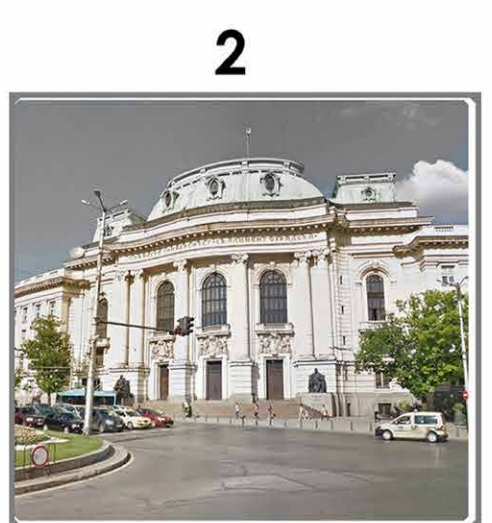
12



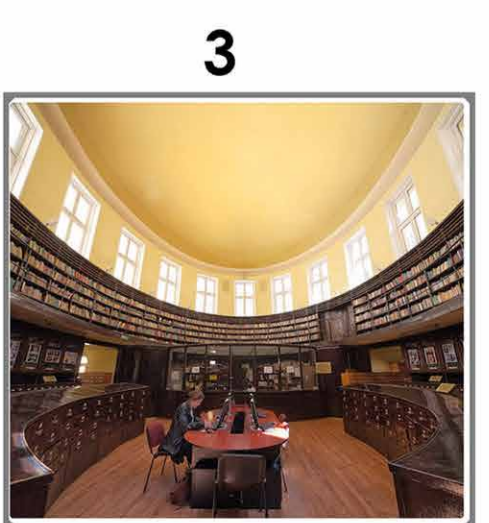
9



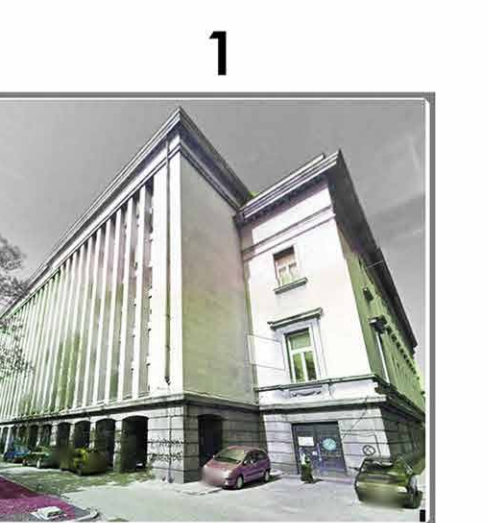
7



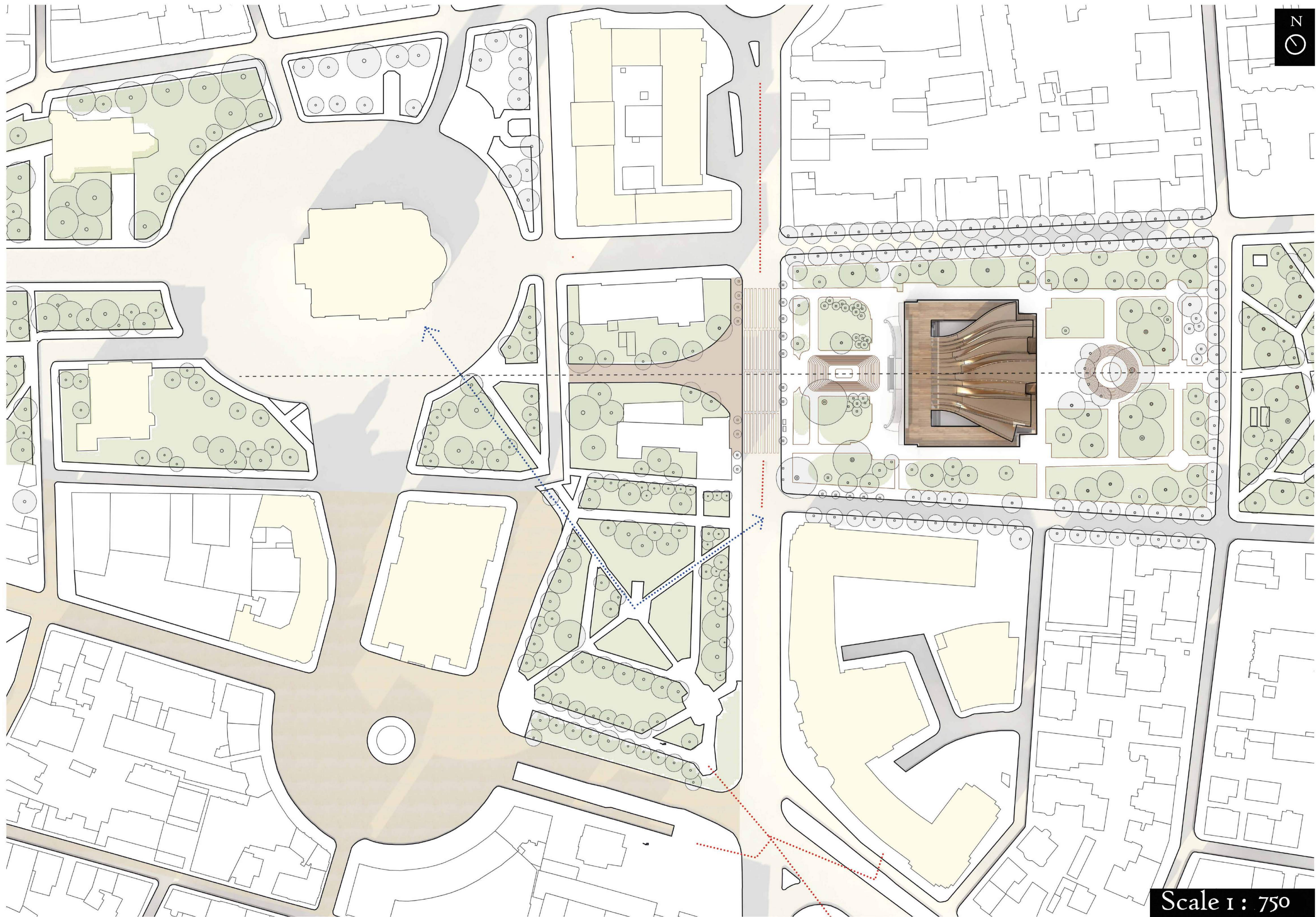
2



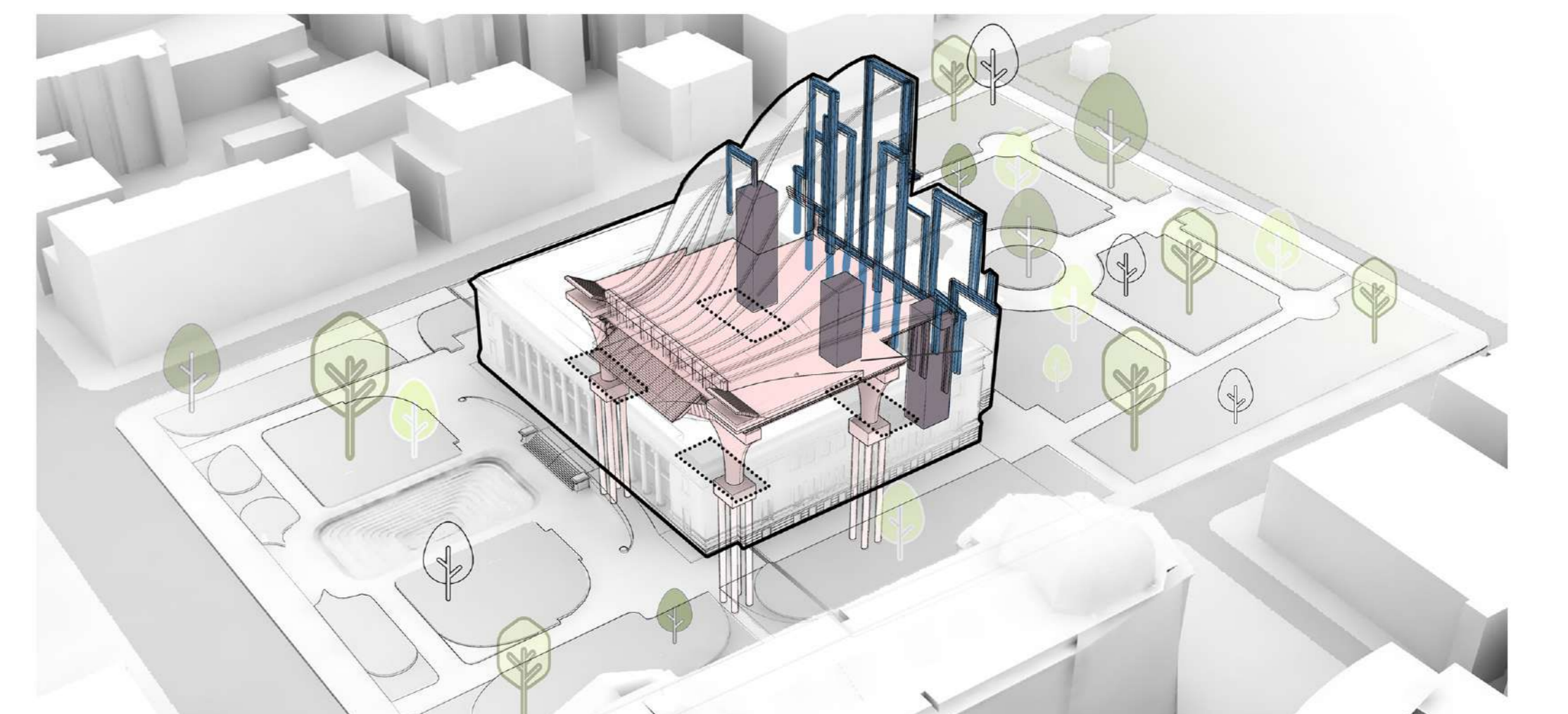
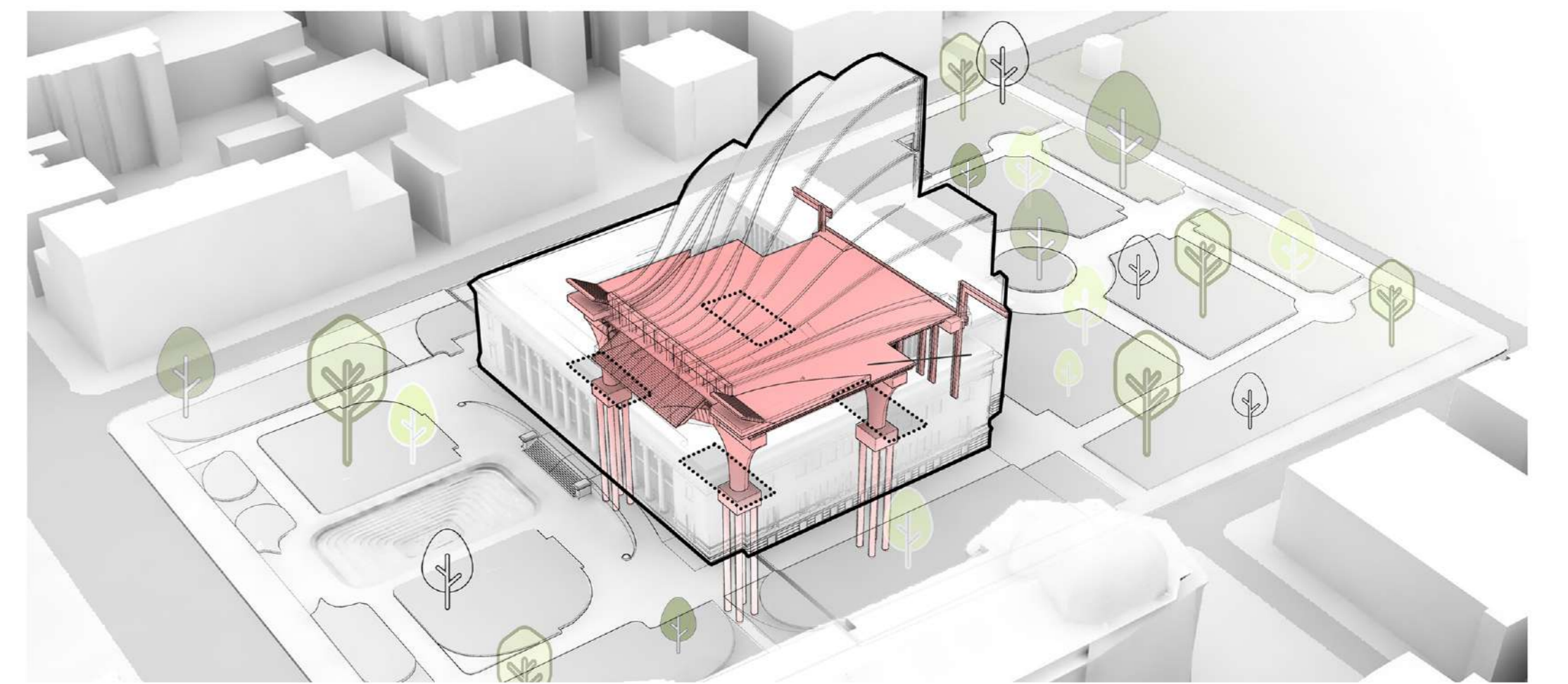
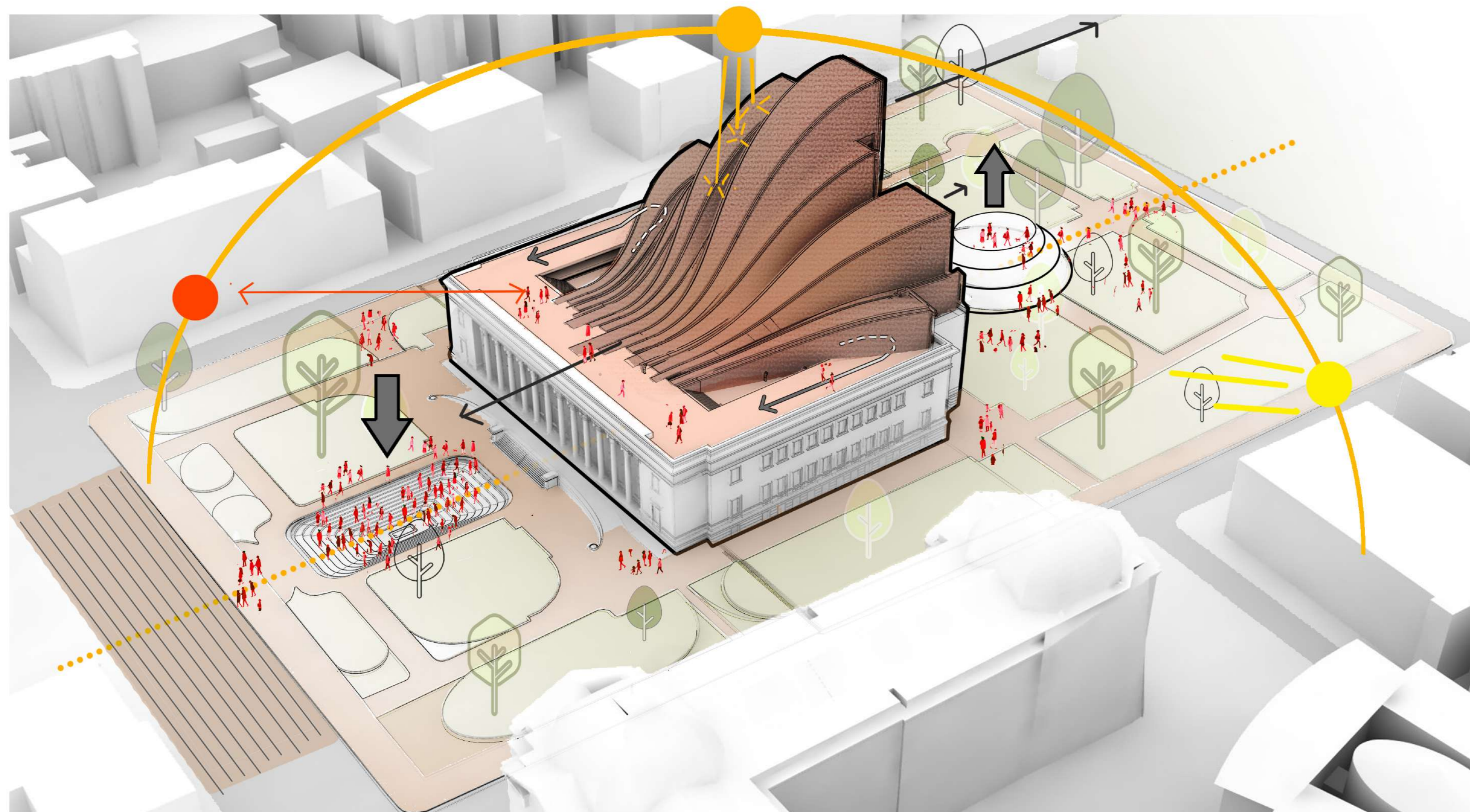
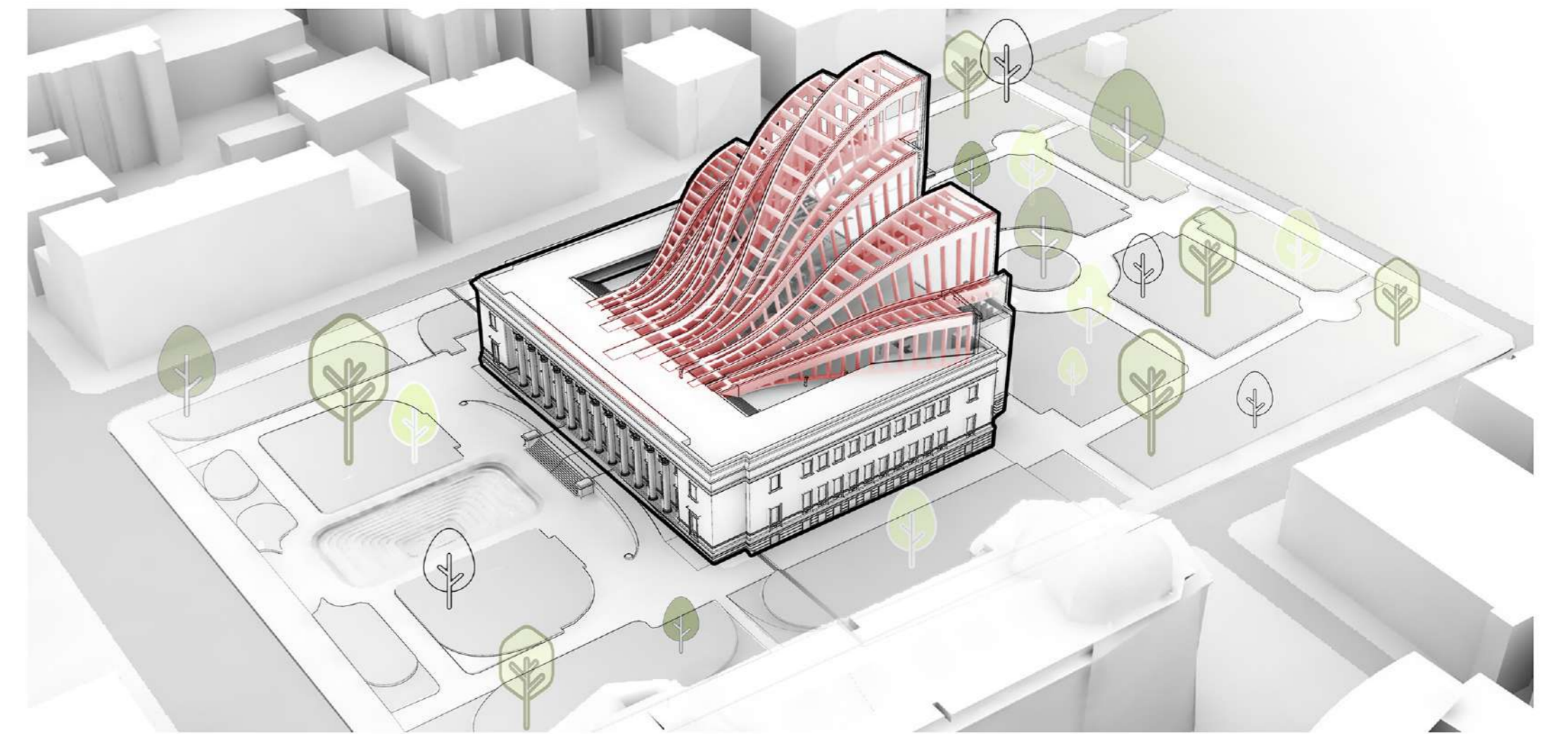
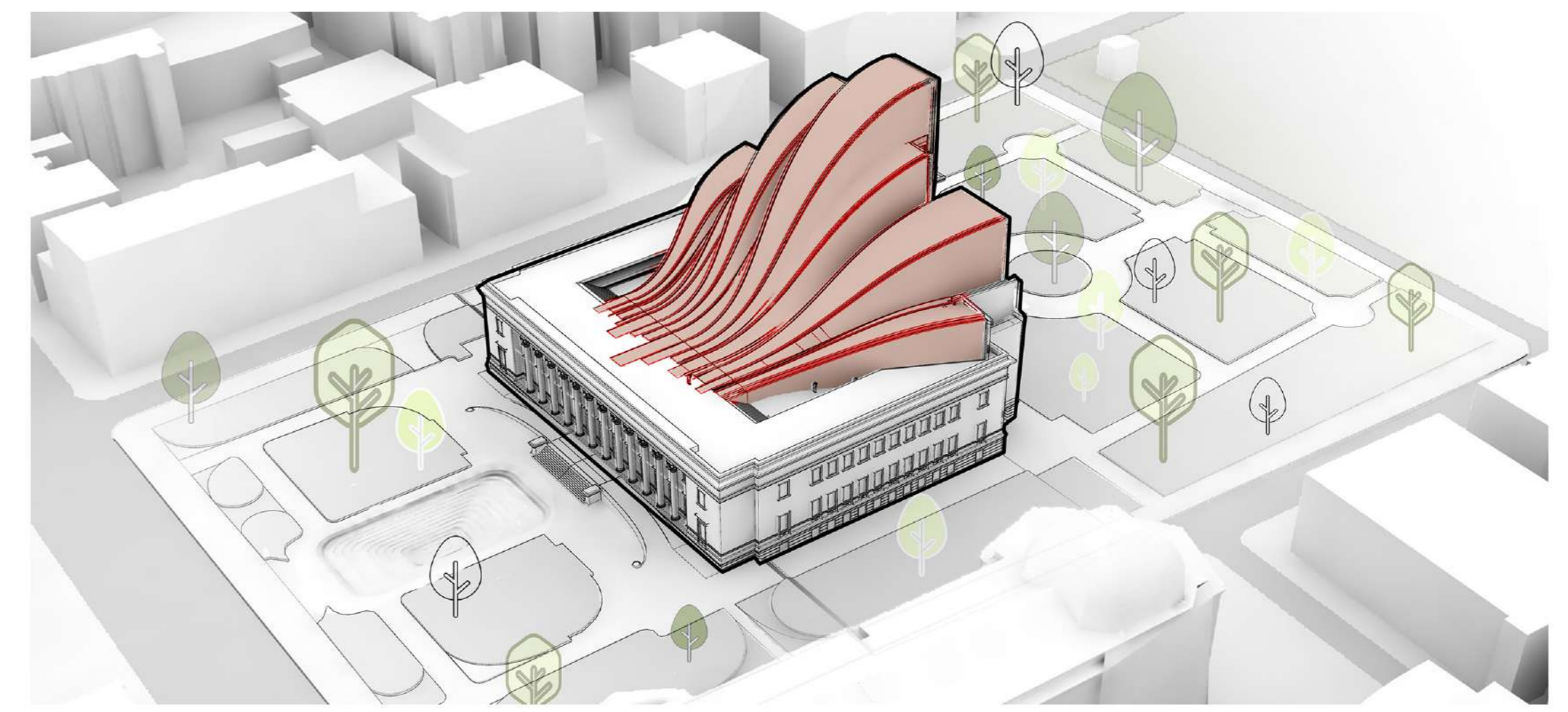
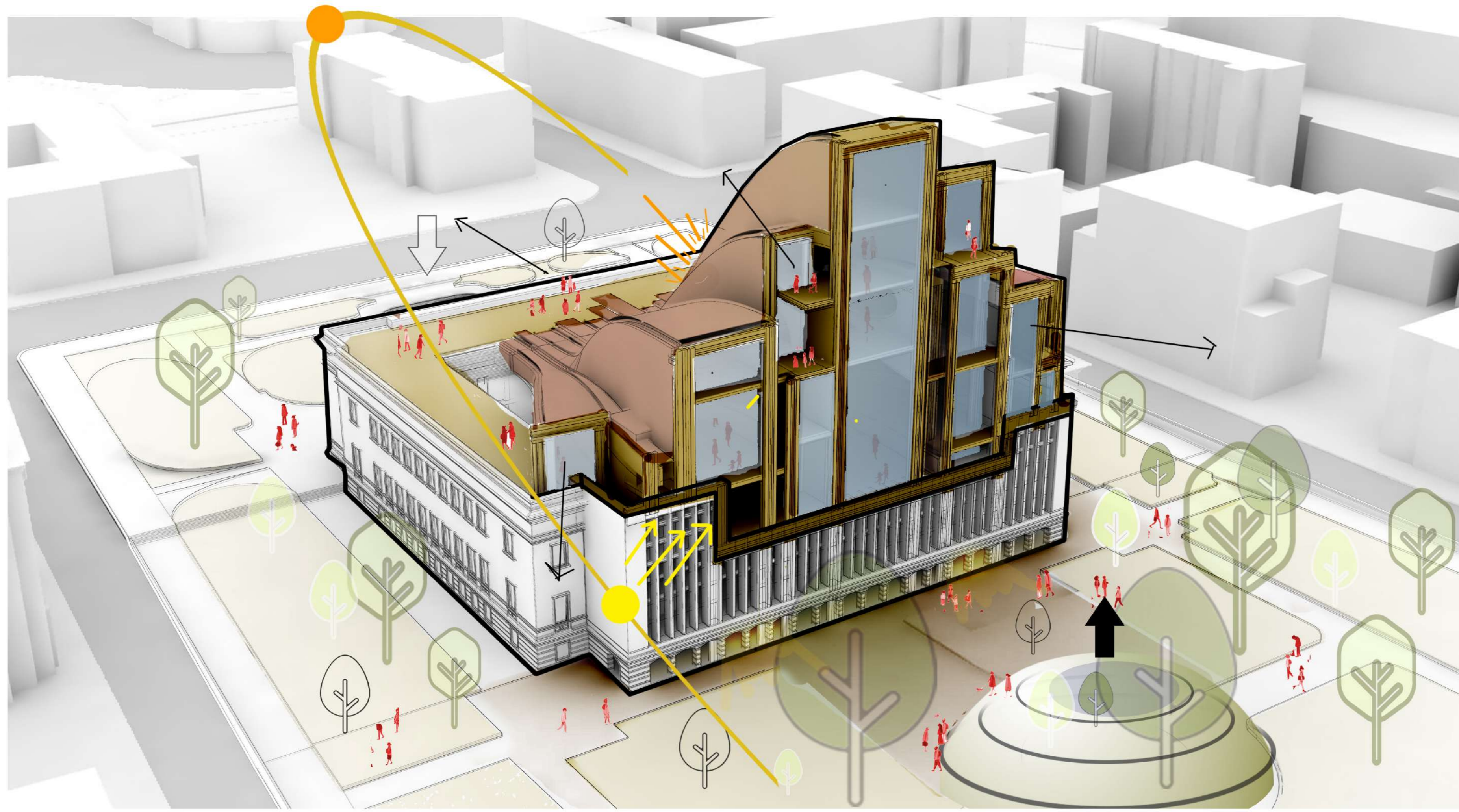
3



1

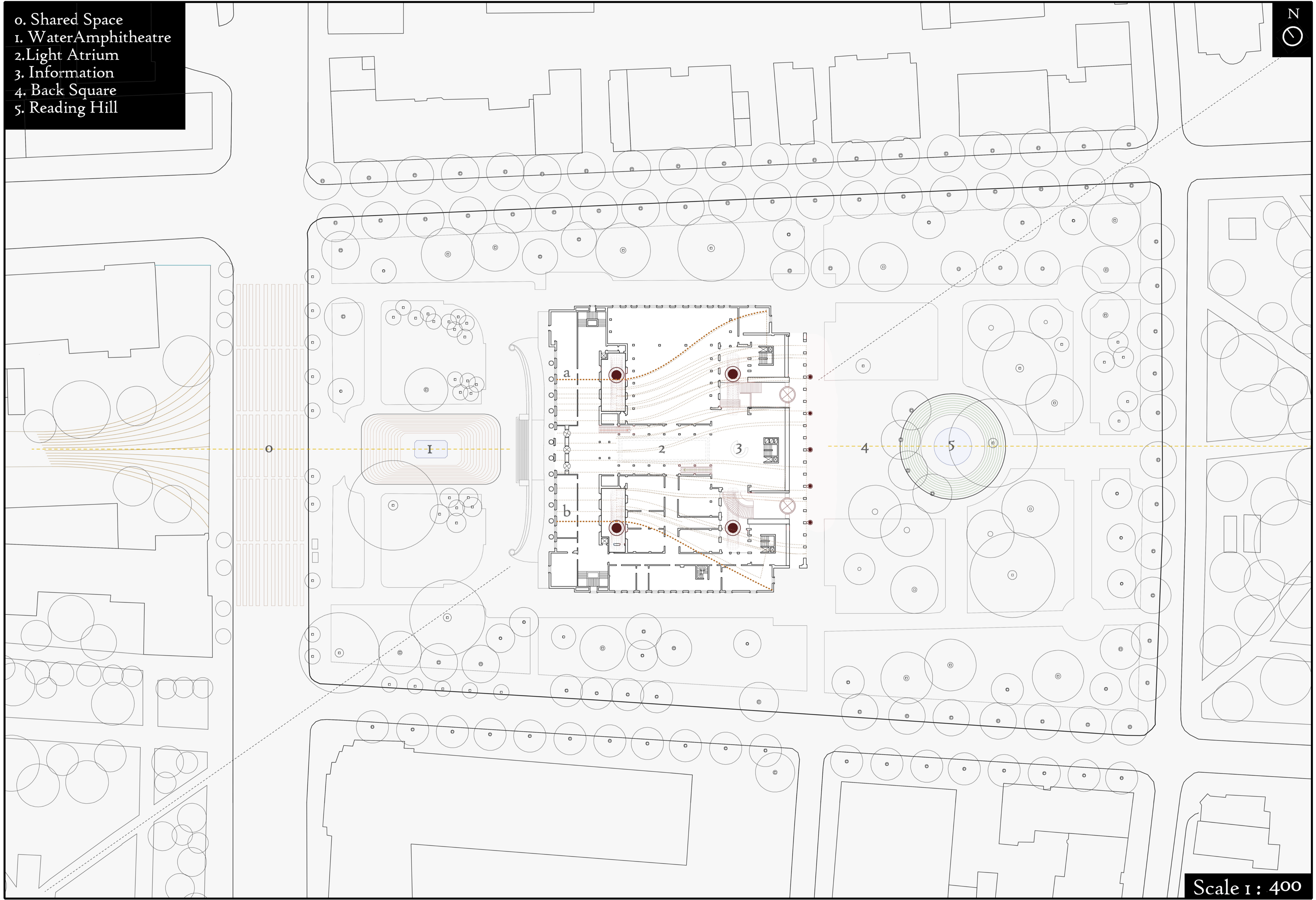


Scale 1 : 750

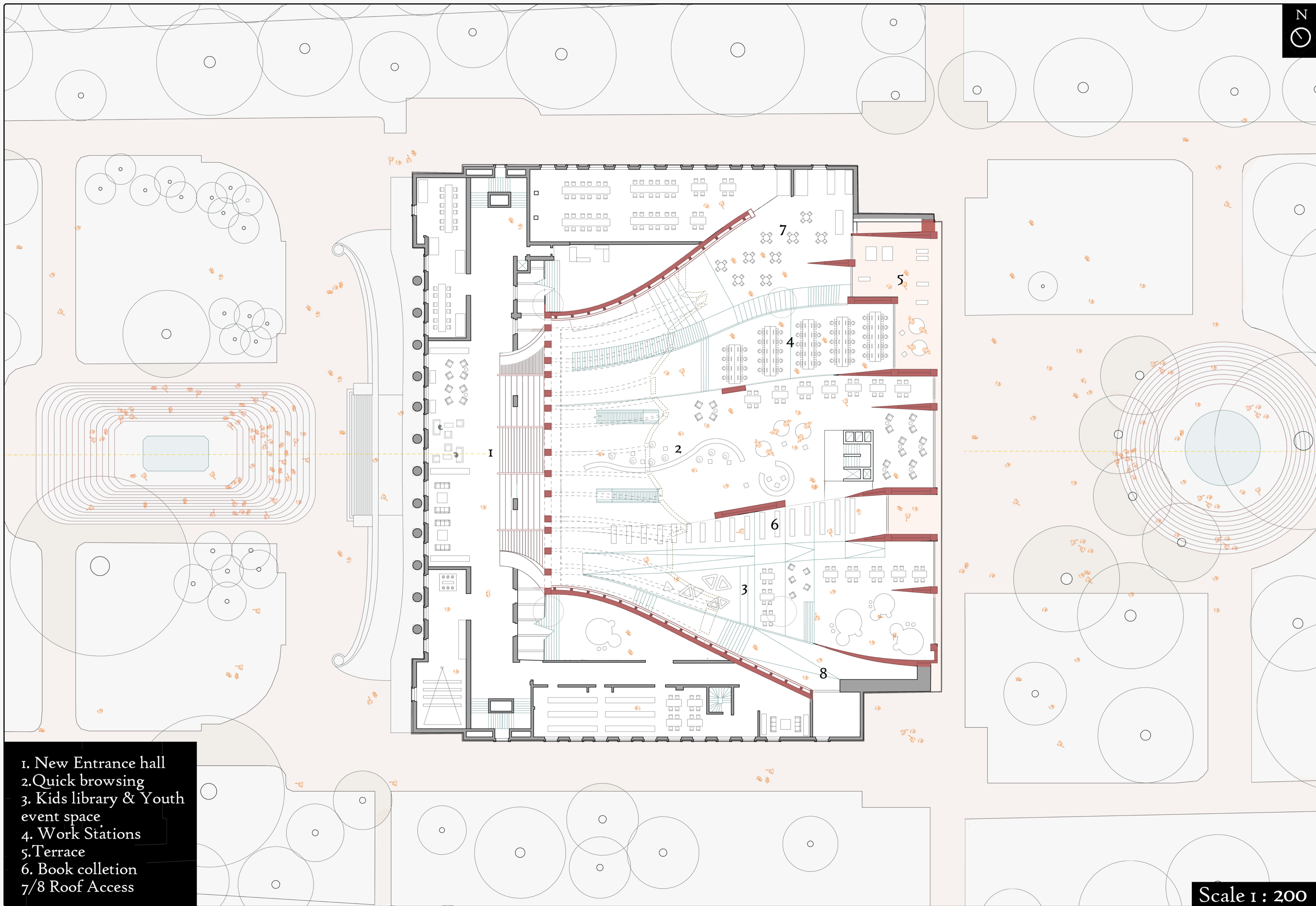




- 0. Shared Space
- 1. Water Amphitheatre
- 2. Light Atrium
- 3. Information
- 4. Back Square
- 5. Reading Hill



Scale 1 : 400



- 1. New Entrance hall
- 2. Quick browsing
- 3. Kids library & Youth event space
- 4. Work Stations
- 5. Terrace
- 6. Book collection
- 7/8 Roof Access

Scale 1 : 200

Structure

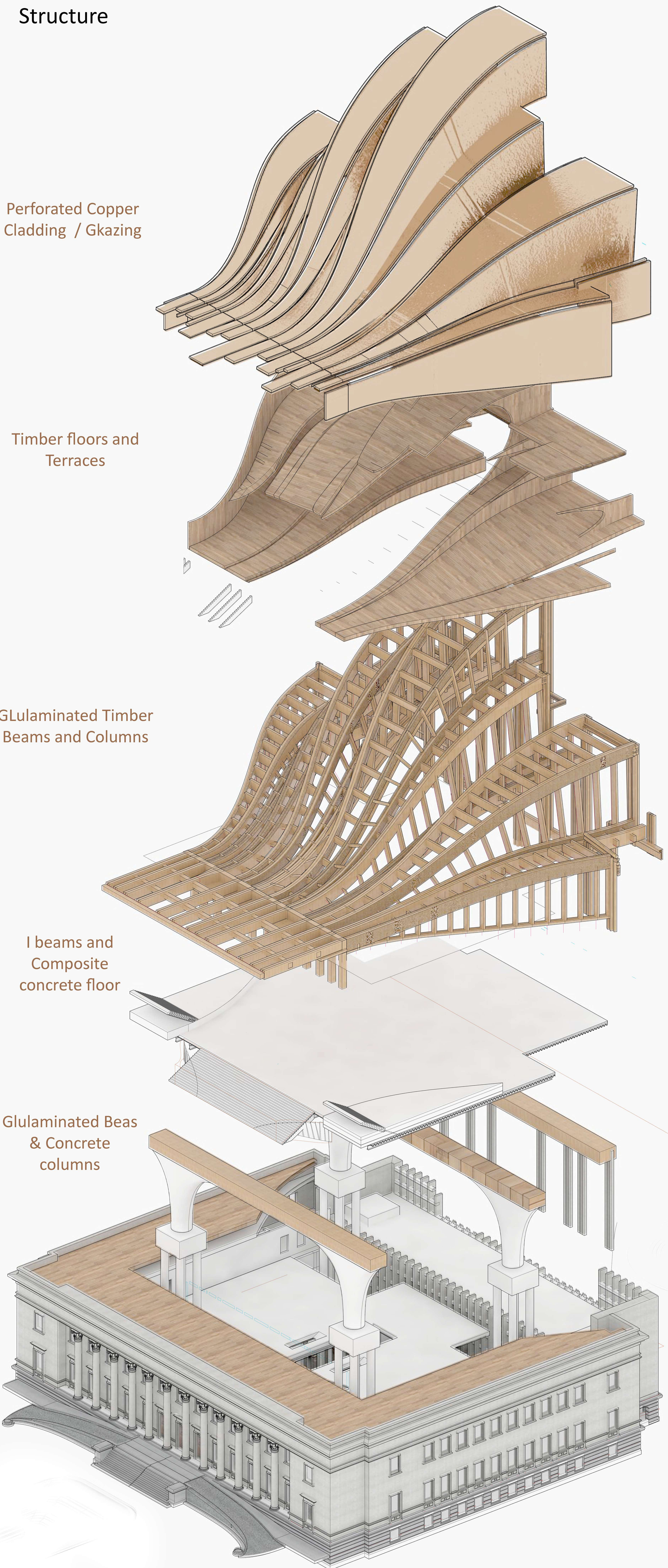
Perforated Copper Cladding / Glazing

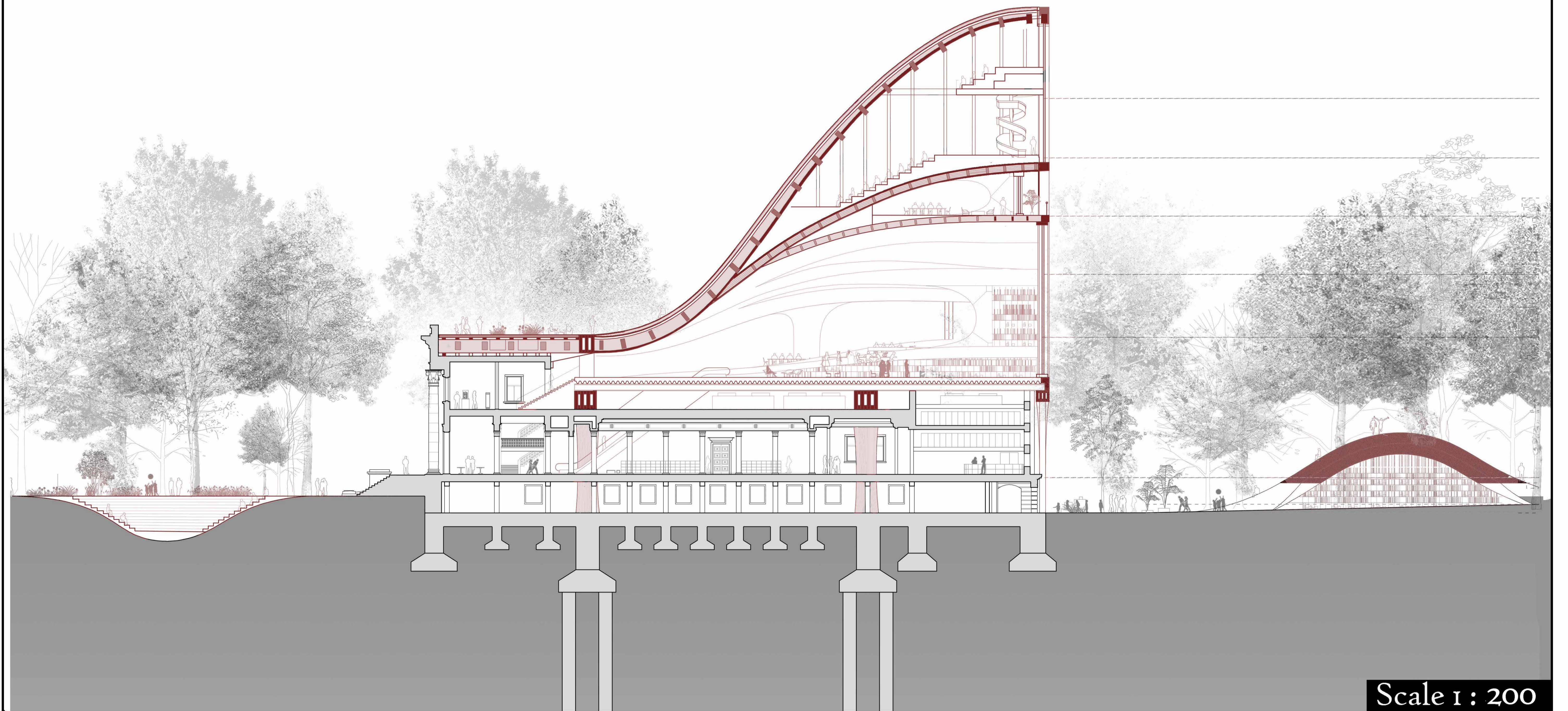
Timber floors and Terraces

GLulamined Timber Beams and Columns

I beams and Composite concrete floor

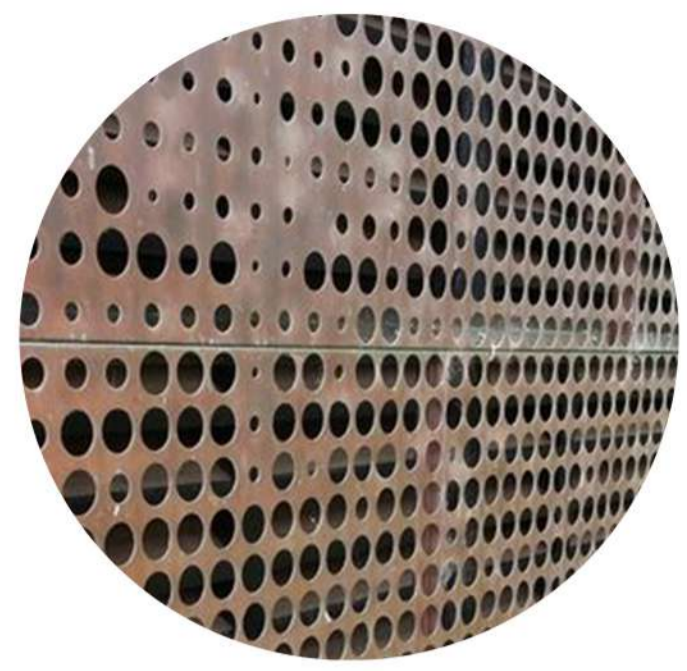
Glulamined Beas & Concrete columns



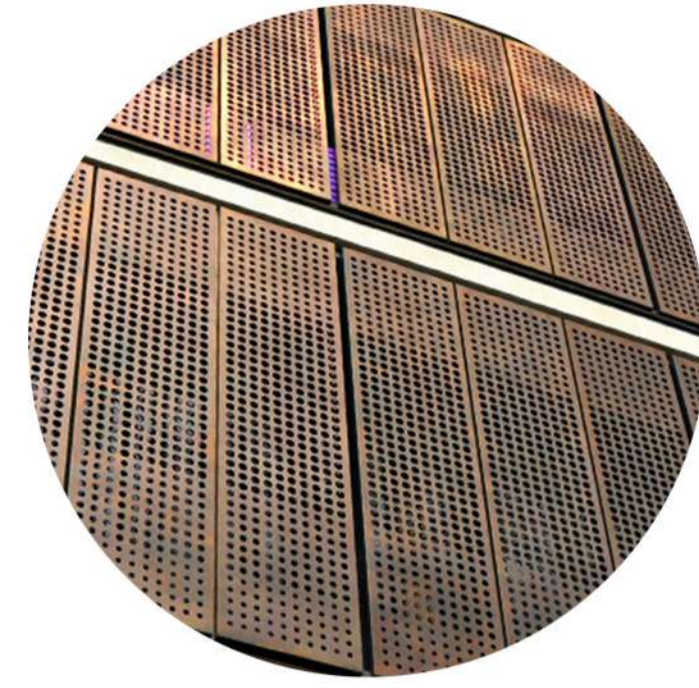


Scale 1 : 200

Material Studies



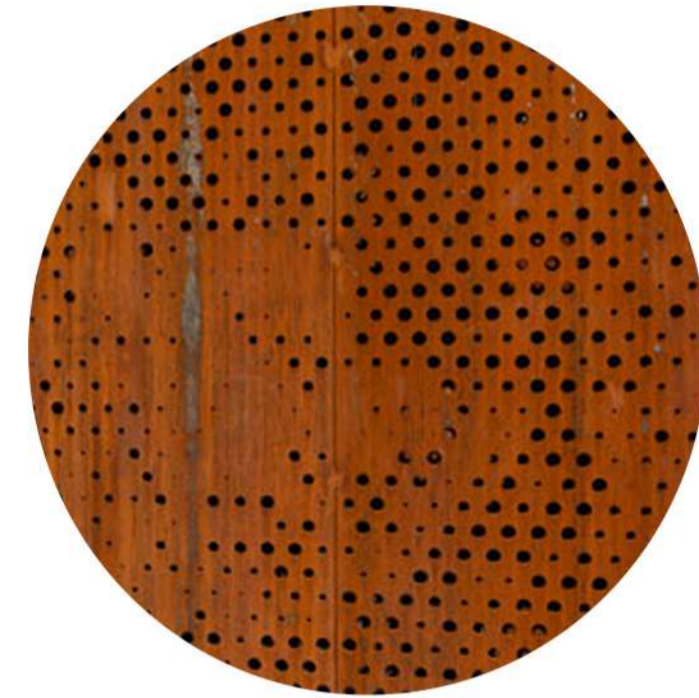
Powder Coated Aluminium



Zinc Cladding

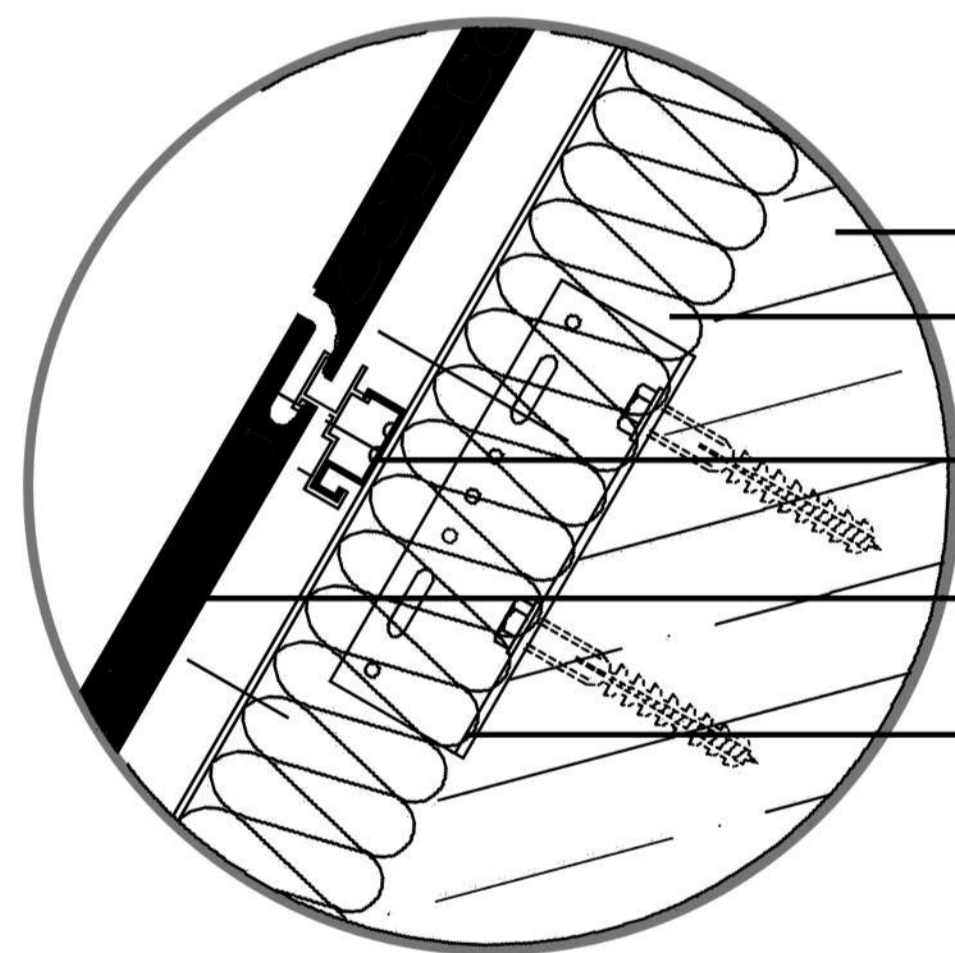


Coated Copper

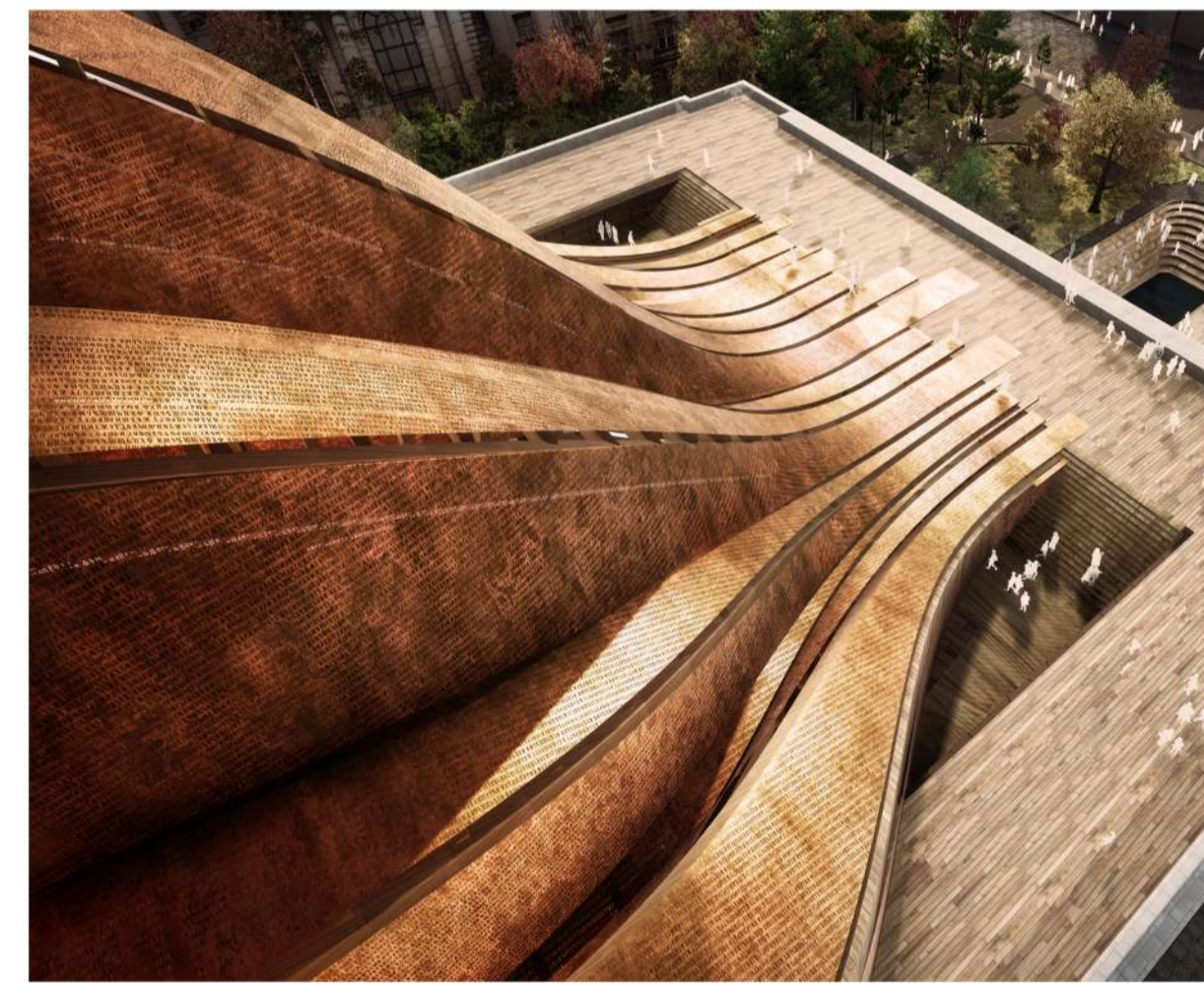


Perforated Corten

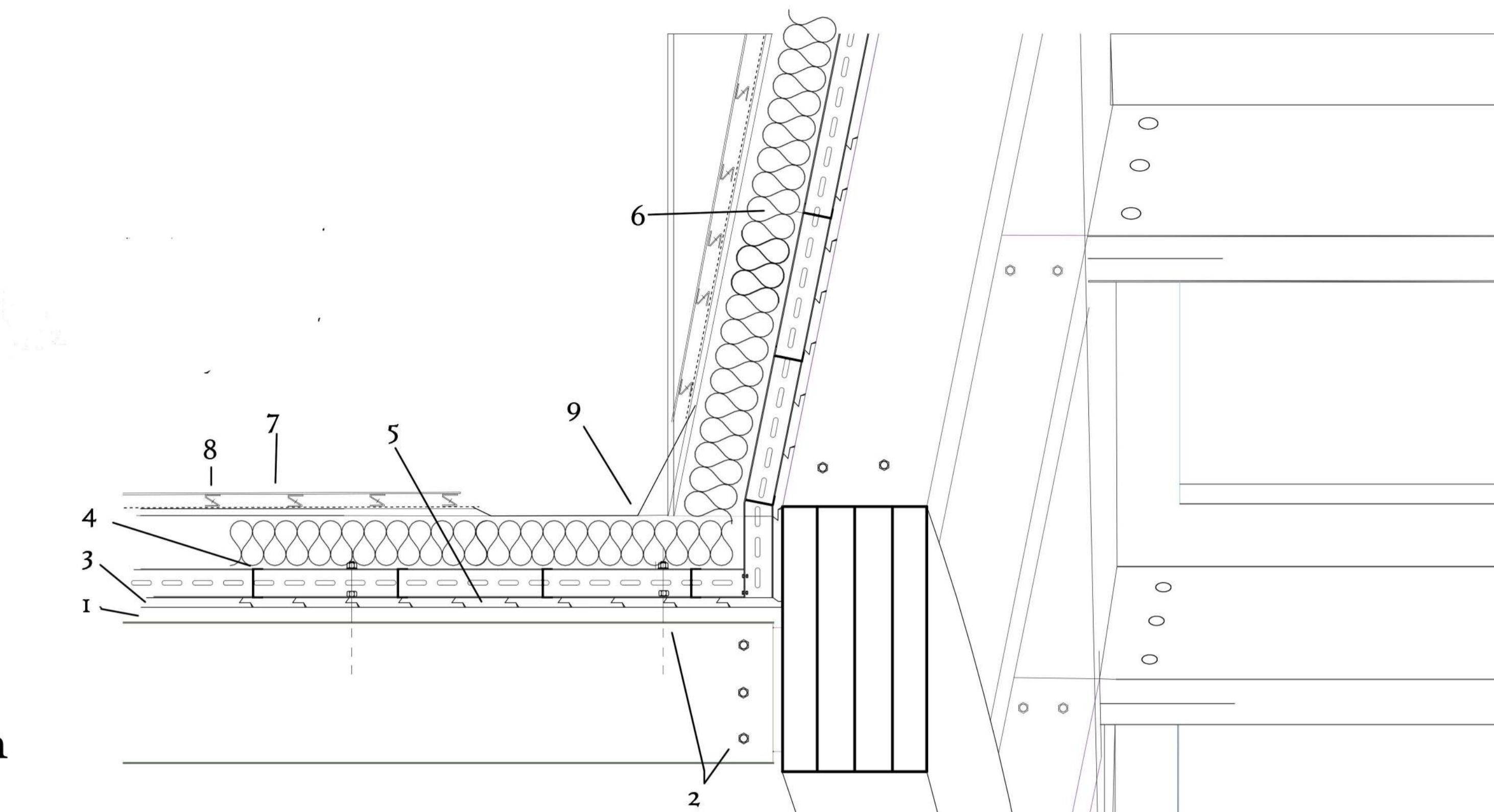
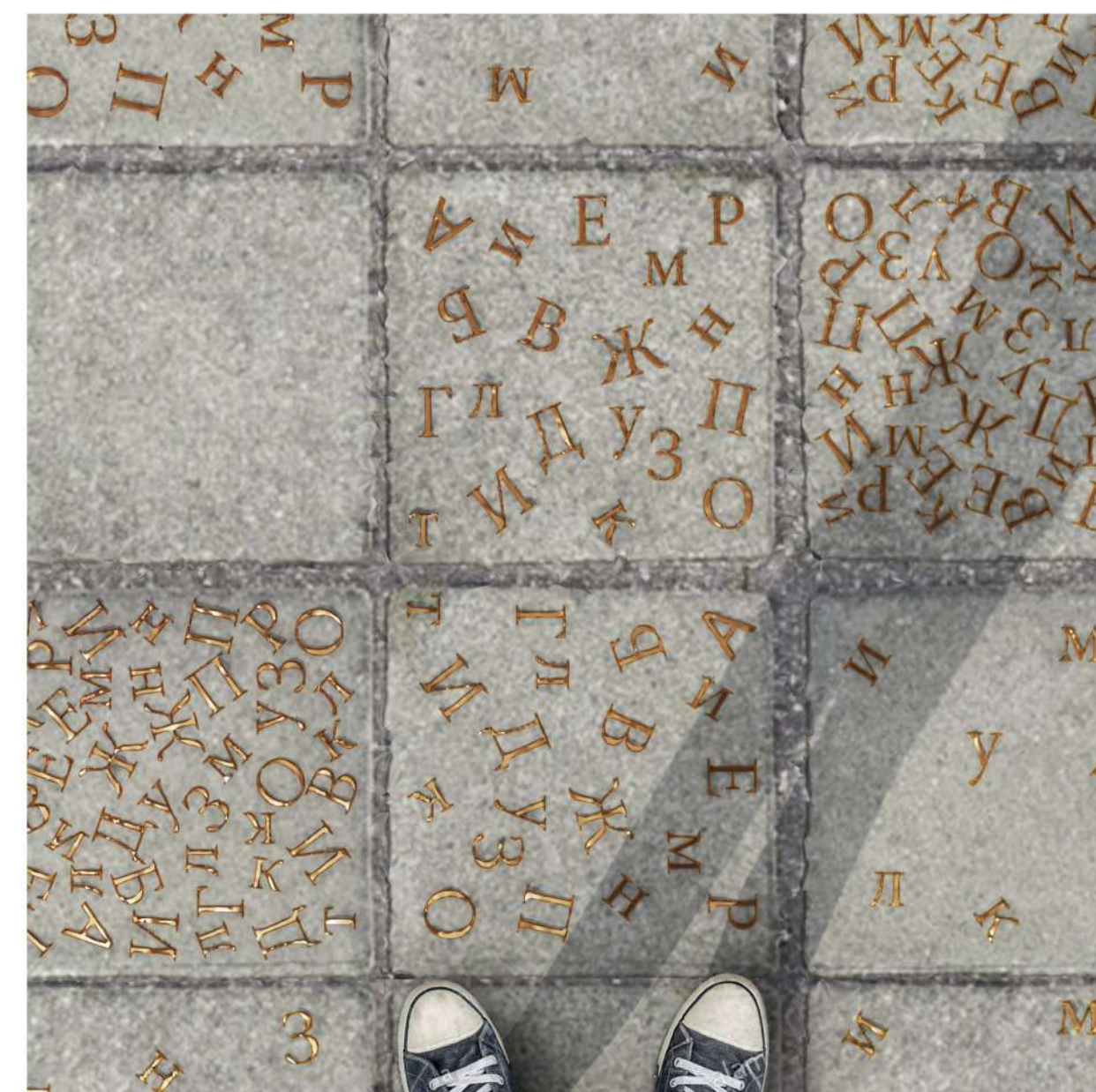
Detail 1:5



- Glulam Beam
- Thermal Insulation
- Clips
- Perforated Panels
- L Anchorage



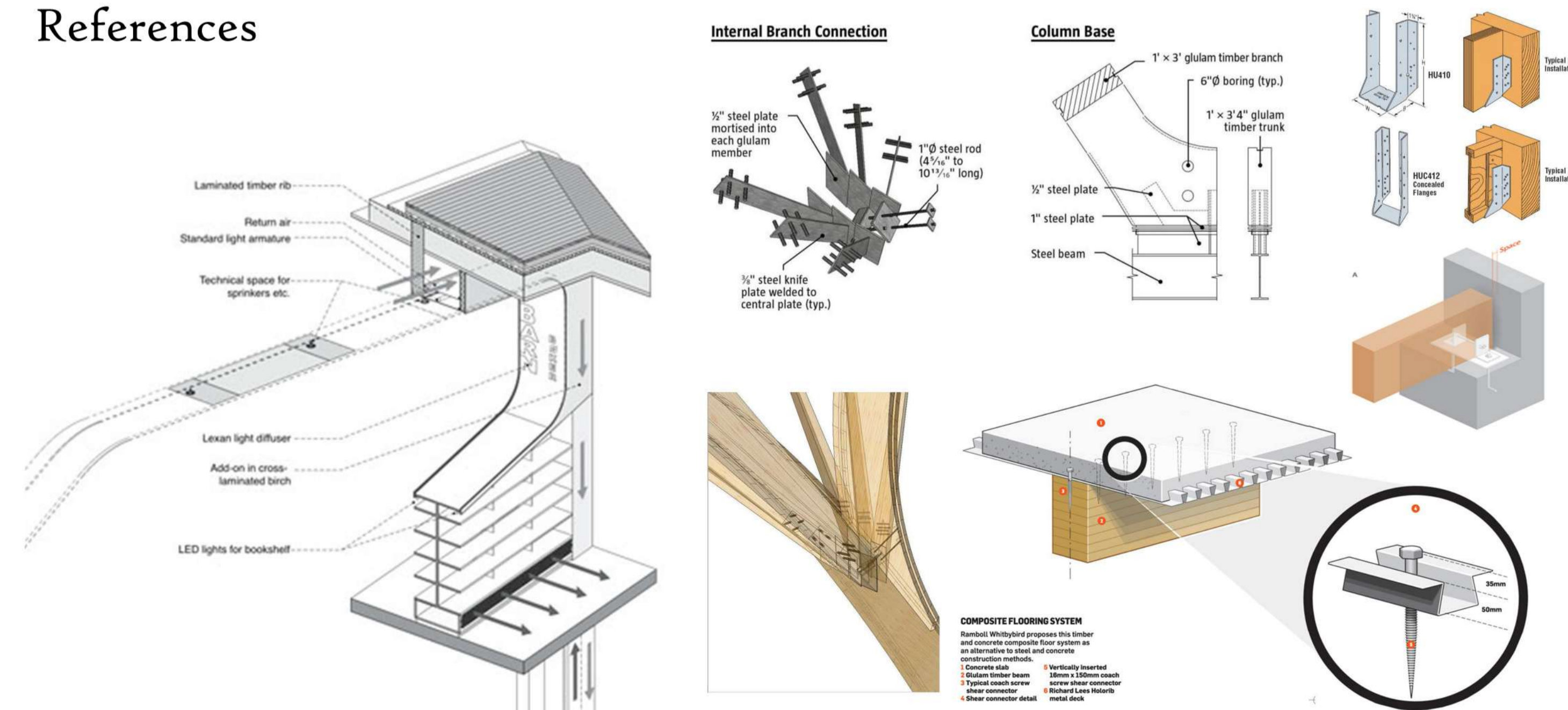
Concrete embedding



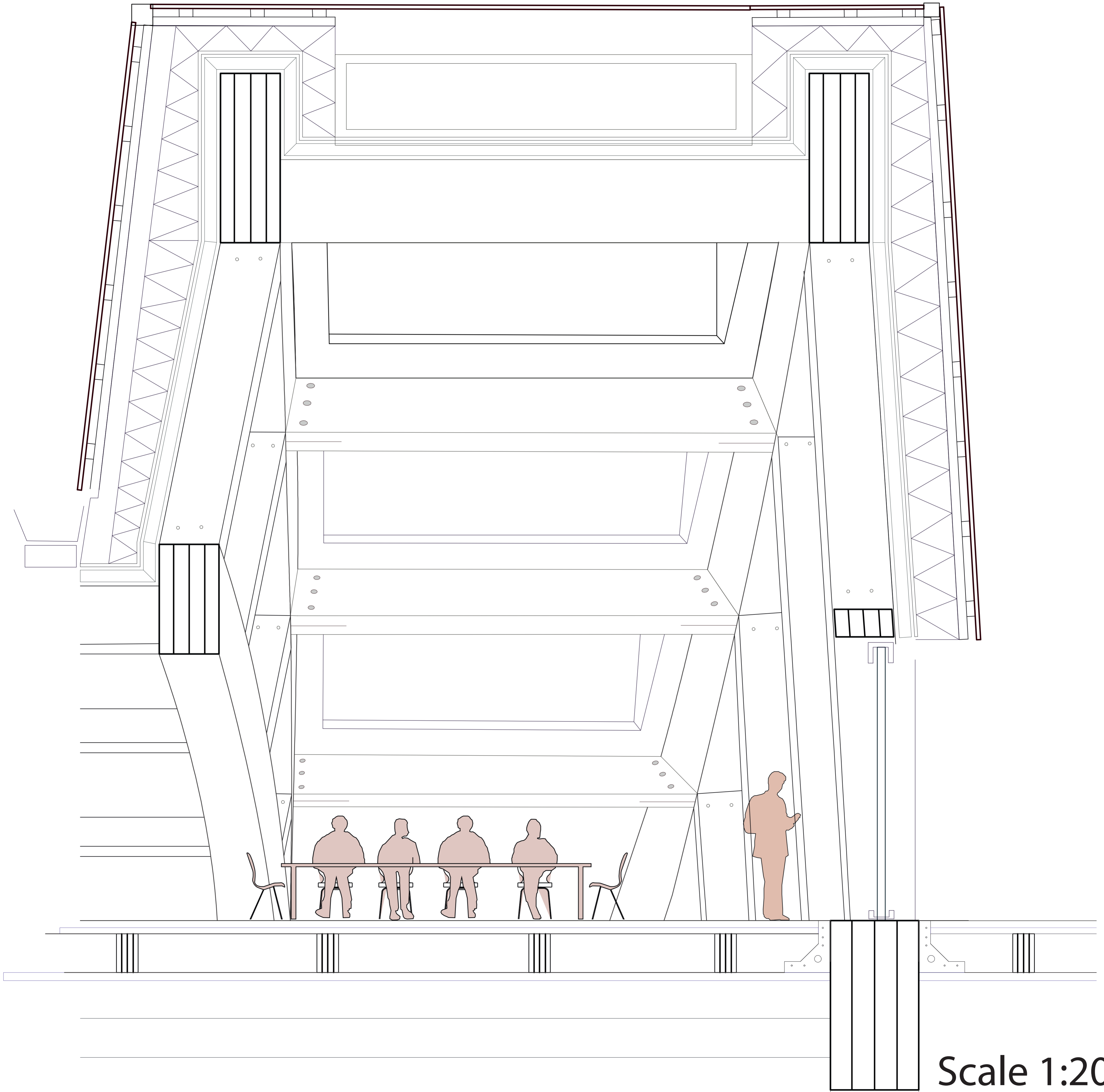
- 1- Fassaden concealed cladding clip
- 2- M24 structural hexagon head nut and bolt system
- 3- Internal softwood spruce cladding with interlocking joint fixed with cladding clip
- 4- Recycled and reclaimed mild C section steel cladding channel mixed by m8 nut and bolt system with lightening slots to reduce weight
- 5- 24mm structural marine grade plywood panel
- 6- 250mm Recycled mineral wool from upcycled industrial slag 0.15 w/m2K Solitex breather membrane 0.20 MNs/g (for high level air tightness)
- 7- Perforated weathered steel panel
- 8- Z angle steel cladding clip fixed to marine grade plywood
- 9- anodised aluminium drainage channel to falls recessed into plywood

Detail 1:10

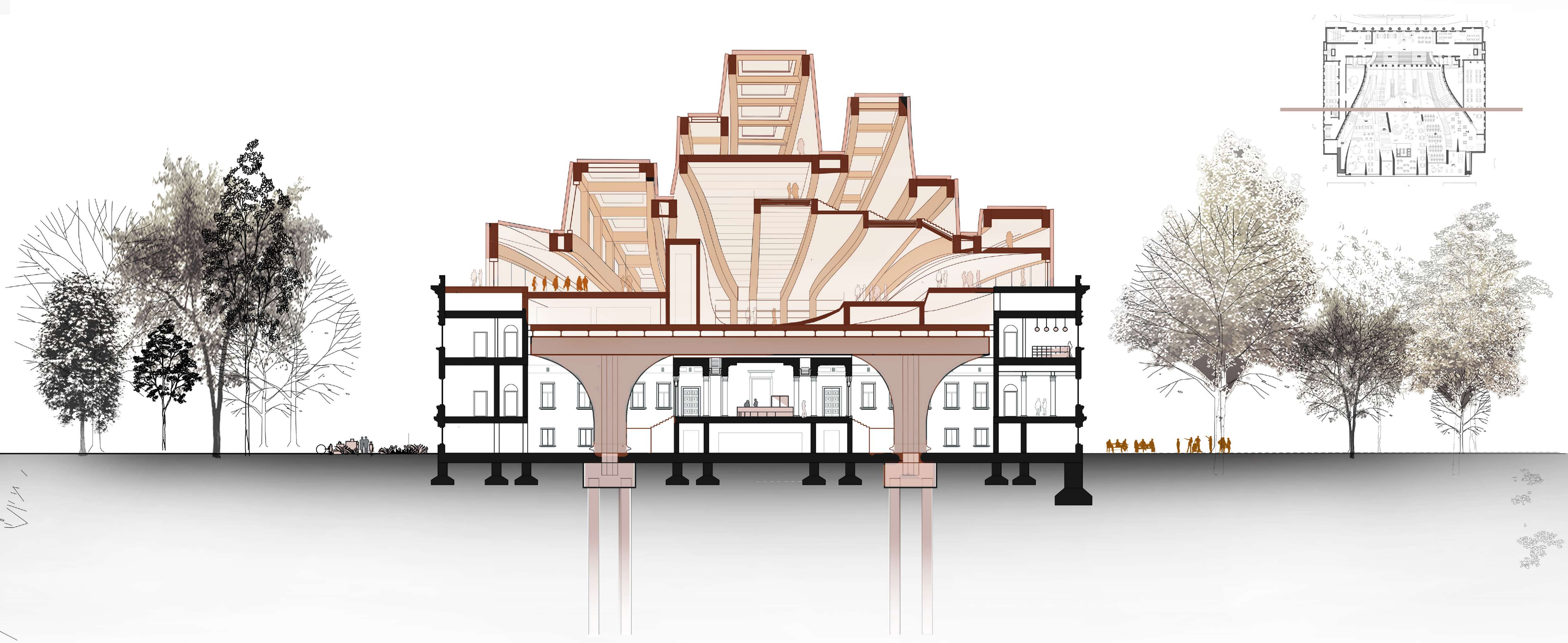
References



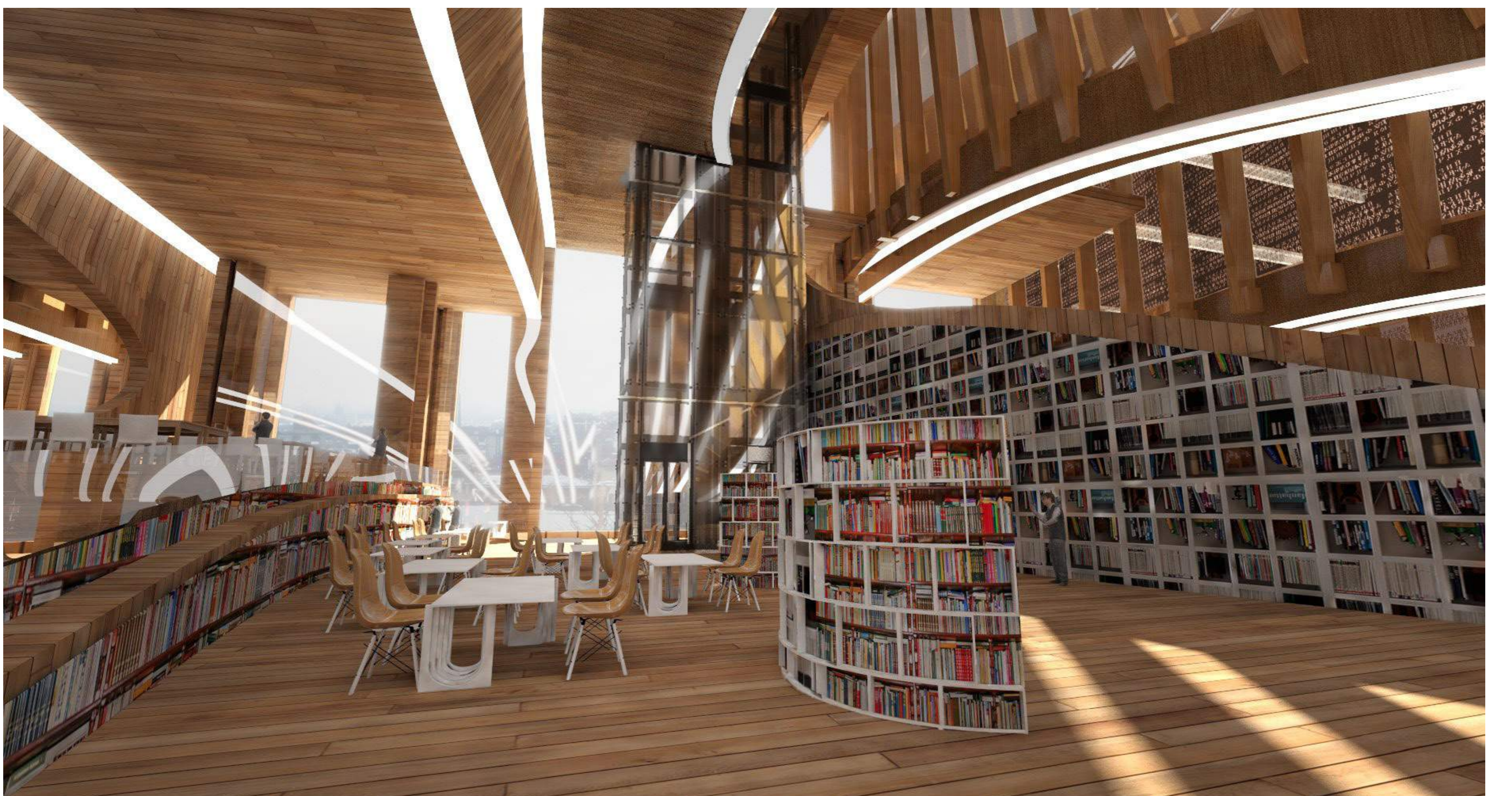
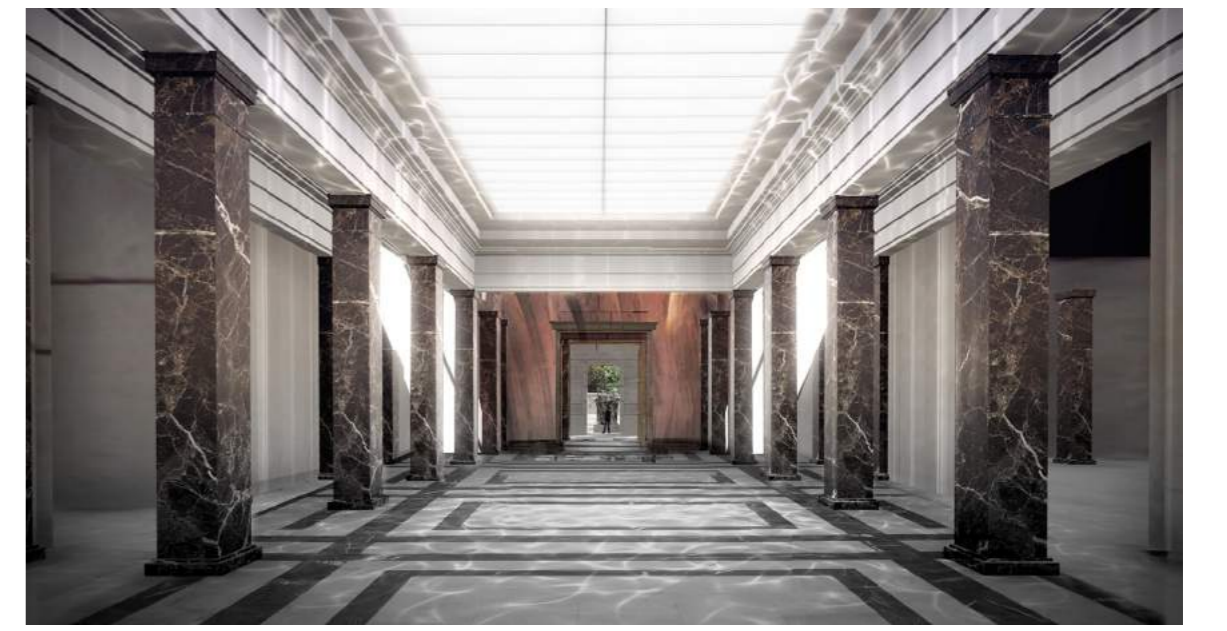
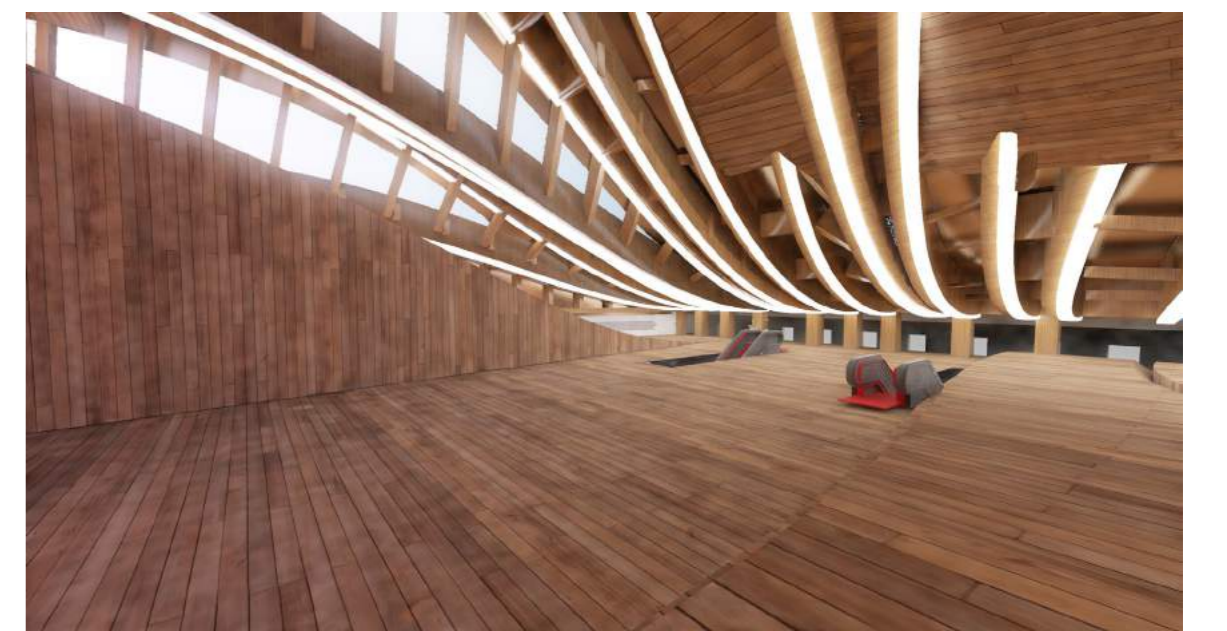




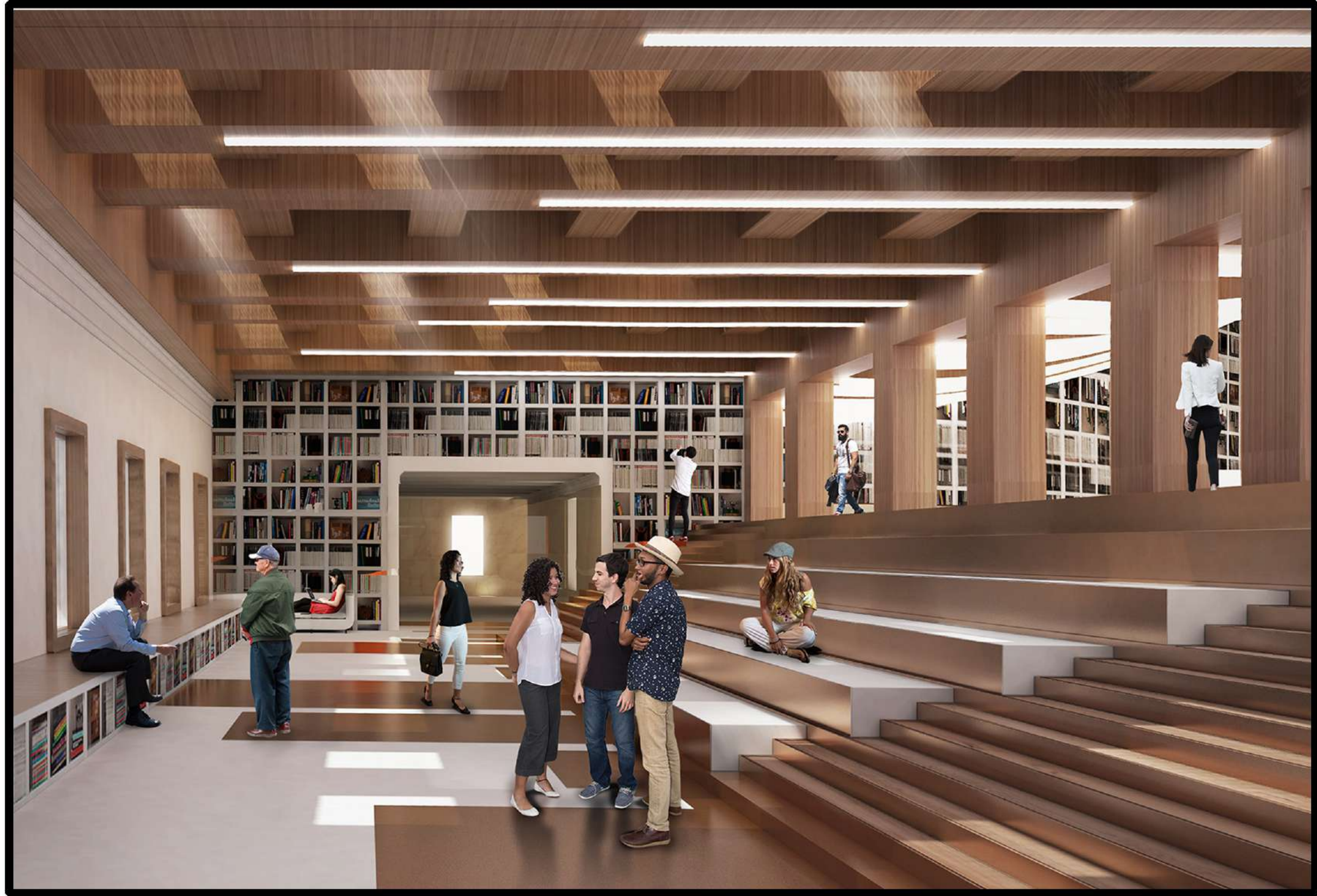
Scale 1:20



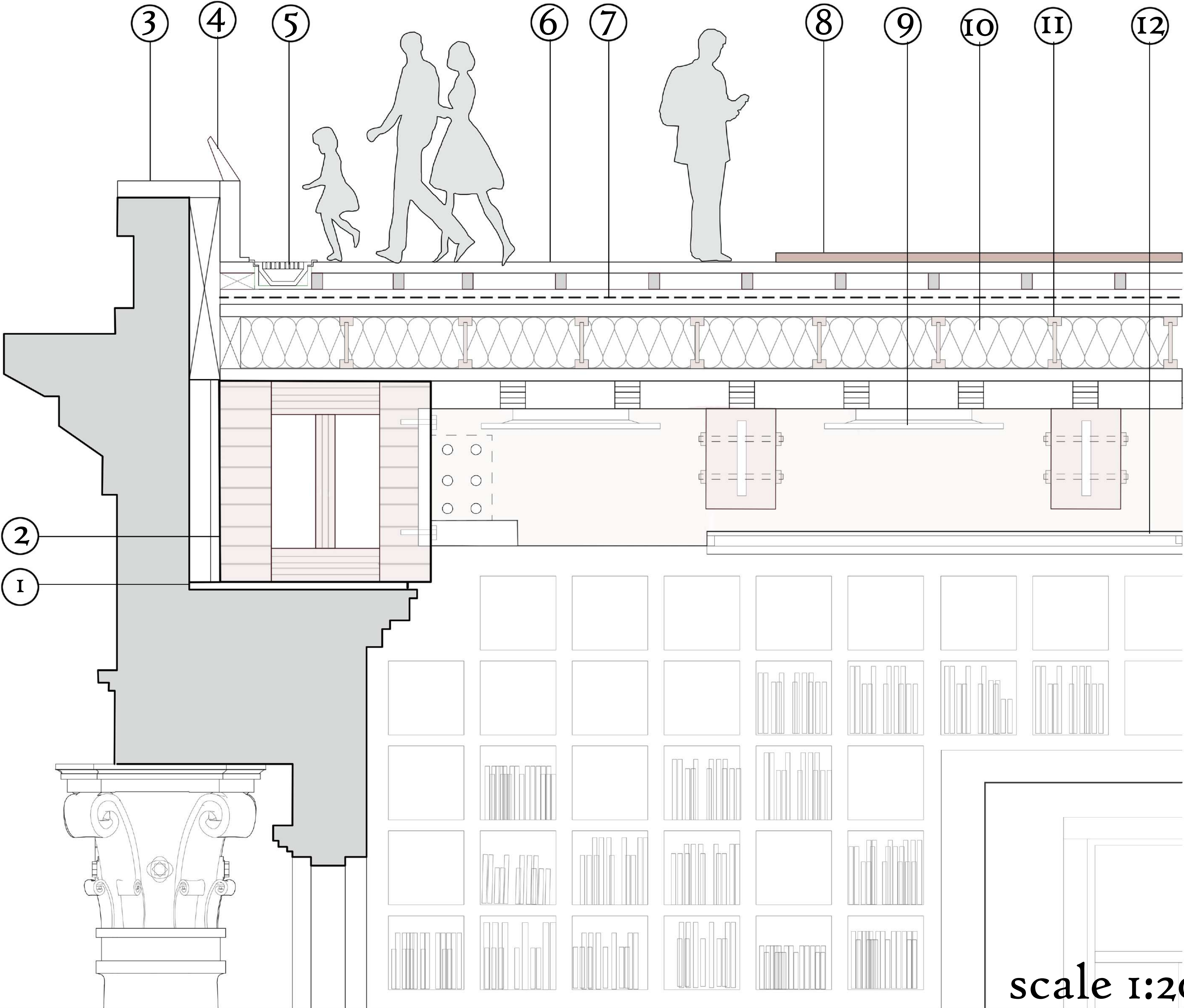
Scale 1:200



Construction Detail: Between the old and the new



- 1. Steel Plate
- 2. Glulam Box Beam
- 3. Polished Travertine
- 4. Copper Signage
- 5. Drainage
- 6. Board on batten
- 7. Damp Proof Membrane
- 8. Perforated Copper Panels
- 9. Light Fixtures
- 10. Insulation
- 11. Timber I beams
- 12. Solid Glulam Timber Beam
- 13. Light Strip
- 14. Beam Hanger



scale 1:20

